















AP ready device
 All devices are required to be listed or labeled in the country of origin and must be approved by the local authority.

Event indicators (LED)
 - Red light indicates an open circuit or a short circuit.
 - Green light indicates a closed circuit.
 - Amber light indicates a fault condition.
 - Blue light indicates a warning condition.
 - Yellow light indicates a warning condition.
 - White light indicates a warning condition.
 - Multiple colors may be used to indicate different conditions.

DC DC Converters (LED)
 - Red light indicates a fault condition.
 - Green light indicates a closed circuit.
 - Amber light indicates a fault condition.
 - Blue light indicates a warning condition.
 - Yellow light indicates a warning condition.
 - White light indicates a warning condition.
 - Multiple colors may be used to indicate different conditions.

Ground Fault Circuit Interrupter (GFCI)
 Operated by the manufacturer's instructions. The device is designed to protect against ground faults.

ALL INFORMATION
 For more information, please contact your local distributor.

ENPHASE
IQ Combiner 3 ES
 Photovoltaic Combiner Box
 X-IQ-AM1-240-3-ES

UL
 LISTED
 CLASSIFICATION: 68115

Electrical ratings
 Voltage: 240VAC, 60 Hz
 DC Breakers: 60A MAX (combined)
 DC Input: 60A MAX (combined)
 Output: 60A MAX, 30A MAX feeder OCPD
 Temperature: 40°C MAX ambient
 Use only Fuses: DC series fuses only (MOL type)

S/N: P/N:

Wiring instructions
 1. Connect solar and PV combiner box to the add-on 10 AMP safety breaker, not used for backfeed.

Connection	Wire sizes	Torque
DC Breaker	14-12 AWG	2.2 Nm (20.0 In-lb)
	8 AWG	2.8 Nm (25.0 In-lb)
	6-4 AWG	5.0 Nm (45.0 In-lb)
AC Circuit Breaker only	4-1/0 AWG	5.0 Nm (45.0 In-lb)
Neutral and Ground		
Large screw	14-1/0 AWG	0.5 Nm (4.5 In-lb)
Small screw	6-7/4 AWG	2.2 Nm (20.0 In-lb)
Min/Max	13-8 AWG	5.0 Nm (45.0 In-lb)
	3/0-10 AWG	5.0 Nm (45.0 In-lb)

Capacitors connected only, rated min. 75°C.
 For low MPPT (NSC) or CSA C22.1 part 1, and all local codes.
 For DC Breakers larger than 20A, terminals insulated for MPD based on 75°C ampacity.

Designed in California and New Zealand
 Made in Mexico

For IQ-8 Systems











BLUE RAVEN

JOB Hazard Analysis

CUSTOMER NAME: Tyrone Howard

INSTALLATION DATE: 7-5-22

ADDRESS: 106 Norris Farm Dr. Angier, NC 27501

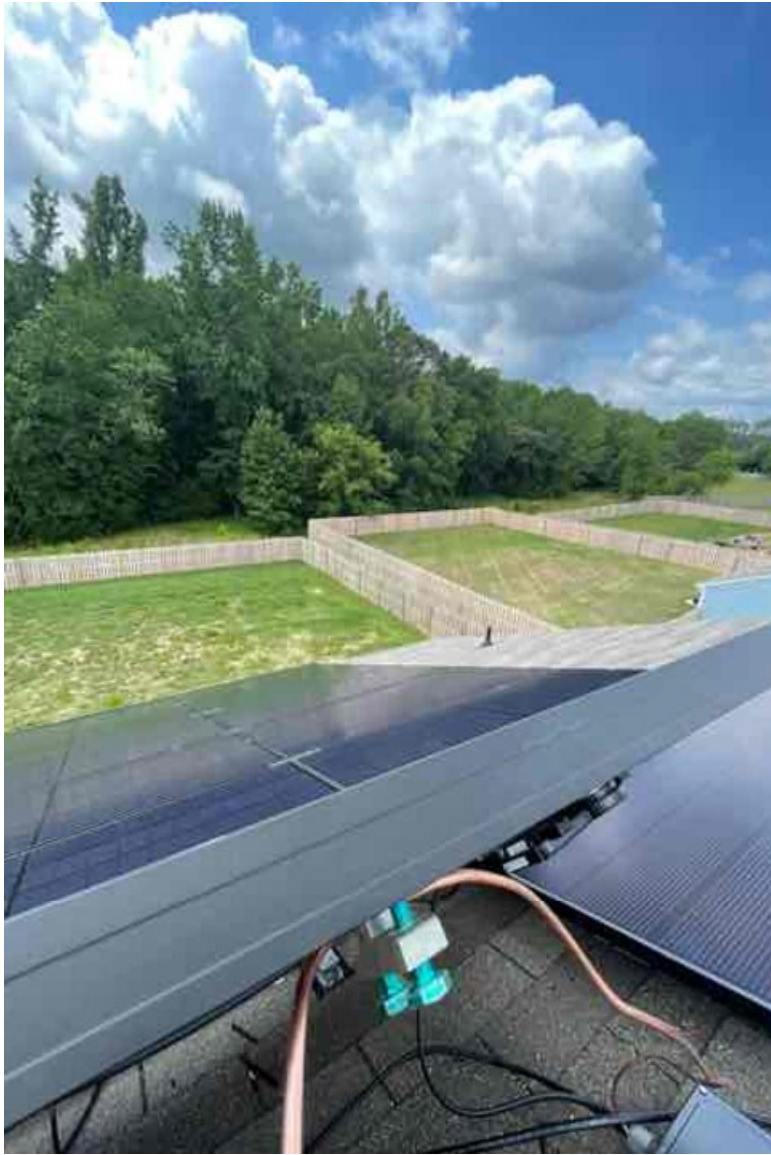
HAZARD CATEGORY	POTENTIAL HAZARDS	HAZARD CONTROLS
Ladder Safety	• Displacement • Defects/Yellow • Misconnection	ladder 3ft above eave and horns
Fall Protection	• Fall from 6' or greater	proper anchors and harness & ropes
Electrical Safety	• Electrocution • ARC Flash	Wear PPE, use proper tools
Heat & Related Issues	• High Heat: 60° to 90° • Extreme Heat: 100° or higher	Break when needed and stay hydrated
Public Protection	• Falling objects • Slip/Trip/Fall	Caution tape around site of cones
NEAREST HOSPITAL:	Central Harnett Hospital 215 Brightwater Dr. Lillington, NC 27546	
SAFETY CONTACT:	Henry Mills: 919-896-5514	
Additional Notes		
Falling Objects Slips Trips	Falls Cuts Weather Conditions	Proper Lifting
Crew Members		
	Name	Signature
1	Devin Brown	<i>Devin Brown</i>
2	William Stahl	<i>William Stahl</i>
3	Ellek Strickland	<i>Ellek Strickland</i>
4		
5		
6		

Efrain Cruz
Crew Lead (print)

Efrain Cruz
Crew Lead (signature)



























UNIRAC
BETTER SOLAR STARTS HERE



SFM N/S BONDING CLAMP 008000U

UPC Code  10039 36689 7

Pack Size: 20
Assembly Date: 12/10/20-01/10/21
PO#0043552-00



California Proposition 65  WARNING: Cancer and Reproductive Harm - www.P65Warnings.ca.gov



UNIRAC
BETTER SOLAR STARTS HERE



SFM TRIM BONDING CLAMP 008100U

UPC Code  10039 36104 7

Pack Size: 10
Assembly Date: 12/10/20-01/10/21
PO#0043552-00



California Proposition 65  WARNING: Cancer and Reproductive Harm - www.P65Warnings.ca.gov





