



WILLMANN
METER TO BE USED WITH THE FOLLOWING PANEL

WILLMANN

WILLMANN
METER TO BE USED WITH THE FOLLOWING PANEL





F005



96

NO

30

NO

30

NO

30

NO

30

NO

100A
1200V-1250V
B-1-M
TRIP

100A
1200V-1250V
B-1-M
TRIP

100A
1200V-1250V
B-1-M
TRIP

100A
1200V-1250V
B-1-M
TRIP

8 2021

Turn off power before removing or installing fuses.
Always use a properly rated voltage sensing device on all fuse clips (Fusible) or all load side terminals (Non-Fusible) to confirm switch is off.
Close or replace cover before turning power on.



同 五 五



↑ Vers la page / Al foglio / Zu Blatt / Naar pagina

Indice do número de série /
Index des séries Envy /
Nummer / Label seriennummer

	2022 1849811	2022 1849812	2022 1849813	2022 1849814	2022 1849815	2022 1849816	2022 1849817	2022 1849818	2022 1849819
	2022 1849820	2022 1849821	2022 1849822	2022 1849823	2022 1849824	2022 1849825	2022 1849826	2022 1849827	2022 1849828
	2022 1849829	2022 1849830	2022 1849831	2022 1849832	2022 1849833	2022 1849834	2022 1849835	2022 1849836	2022 1849837
	2022 1849838	2022 1849839	2022 1849840	2022 1849841	2022 1849842	2022 1849843	2022 1849844	2022 1849845	2022 1849846
	2022 1849847	2022 1849848	2022 1849849	2022 1849850	2022 1849851	2022 1849852	2022 1849853	2022 1849854	2022 1849855
	2022 1849856	2022 1849857	2022 1849858	2022 1849859	2022 1849860	2022 1849861	2022 1849862	2022 1849863	2022 1849864
	2022 1849865	2022 1849866	2022 1849867	2022 1849868	2022 1849869	2022 1849870	2022 1849871	2022 1849872	2022 1849873
	2022 1849874	2022 1849875	2022 1849876	2022 1849877	2022 1849878	2022 1849879	2022 1849880	2022 1849881	2022 1849882
	2022 1849883	2022 1849884	2022 1849885	2022 1849886	2022 1849887	2022 1849888	2022 1849889	2022 1849890	2022 1849891
	2022 1849892	2022 1849893	2022 1849894	2022 1849895	2022 1849896	2022 1849897	2022 1849898	2022 1849899	2022 1849900

← Zu Blatt / Naar pagina

b | c | d | m | n



3

7

6

5

4

3

2

Your ecobee3 lite is now ready and
online.

Register and create an account at
ecobee using the mobile app or at
<https://www.ecobee.com> using the
registration code.

347M

Login to monitor your energy use.

Finish

ecobee



0 GEN

76



ecobee



Honeywell

Digital

78.9





F005



ON

90

ON

30

ON

30

ON

30

ON

30

120VAC
10KA
Type CH

TRIP

COMMON
TRIP

120VAC
10KA
Type CH

TRIP























REC Alpha Pure Series
REC-000AA Pump
 Serial Number: **FBB-00081914**

Type: **00081914**
 Date: **08/19/14**

Power Output Profile

Watt Class: Besting

Power Production Tolerances

Rated Voltage (Vrms):

Rated Current (Irms):

Open Circuit Voltage (Voc): 36V

Short Circuit Current (Isc): 3.36A

Maximum System Voltage (Vsys):

Maximum Series Fuse (DC): 10A

Maximum Series Fuse (AC): 10A

Design Load:

Maximum Total Load:

Maximum Total Load: 36V, 3.36A

WATT

0-40W

0-3.36A

36V

3.36A

36V

3.36A

1000V

20A

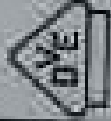
30A

30A

30A



Environmentally Friendly
 Lead-Free Solder
 RoHS Compliant



Manufacturer: REC
 Model: REC-000AA

Warranty Information:

The REC-000AA is warranted against manufacturing defects for a period of 12 months from the date of purchase. This warranty does not cover damage caused by misuse, accident, or unauthorized modification. The REC-000AA is warranted against manufacturing defects for a period of 12 months from the date of purchase. This warranty does not cover damage caused by misuse, accident, or unauthorized modification.

REC-000AA is a Class 1 Laser Product. It is not to be used in conjunction with any other Class 1 Laser Product. The maximum power output of this device is 40W. The maximum current output is 3.36A. The maximum voltage output is 36V. The maximum system voltage is 1000V. The maximum series fuse is 20A. The maximum series fuse is 30A. The maximum total load is 30A.

CAUTION: DO NOT DISCONNECT BATTERY LEADS. Disconnecting the battery leads while the device is operating may cause damage to the device. The device should be used in a well-ventilated area. The device should be used in a dry location. The device should be used in a location where it will not be exposed to moisture. The device should be used in a location where it will not be exposed to dust. The device should be used in a location where it will not be exposed to corrosive vapors.



Always use proper wiring techniques. Do not connect the output of the combiner to the output of another combiner. Always use proper wiring practices and safety.

- Power Protection (PT)**
- Always use proper wiring techniques. Do not connect the output of the combiner to the output of another combiner. Always use proper wiring practices and safety.
 - Always use proper wiring techniques. Do not connect the output of the combiner to the output of another combiner. Always use proper wiring practices and safety.
 - Always use proper wiring techniques. Do not connect the output of the combiner to the output of another combiner. Always use proper wiring practices and safety.
- Device Certification (DOT)**
- Always use proper wiring techniques. Do not connect the output of the combiner to the output of another combiner. Always use proper wiring practices and safety.
 - Always use proper wiring techniques. Do not connect the output of the combiner to the output of another combiner. Always use proper wiring practices and safety.
 - Always use proper wiring techniques. Do not connect the output of the combiner to the output of another combiner. Always use proper wiring practices and safety.

WARRANTY

ENPHASE PHOTOVOLTAIC COMBINER BOXES ARE COVERED BY A LIMITED WARRANTY. FOR THE FULL DETAILS OF OUR WARRANTY, PLEASE VISIT www.enphase.com/warranty.

ENPHASE.
IQ Combiner 3 ES
 Photovoltaic
 Combiner Box
 X-IQ-AM1-240-3-ES



Electrical ratings

Voltage 240VAC, 60 Hz
 DC Processors 900 (3000) (combined)
 DC Inputs 600 (3000) (combined)
 Output 60A (3000) (combined)
 Temperature 40°C MAX ambient
 Use only Enphase DC series fuses (60A, must)

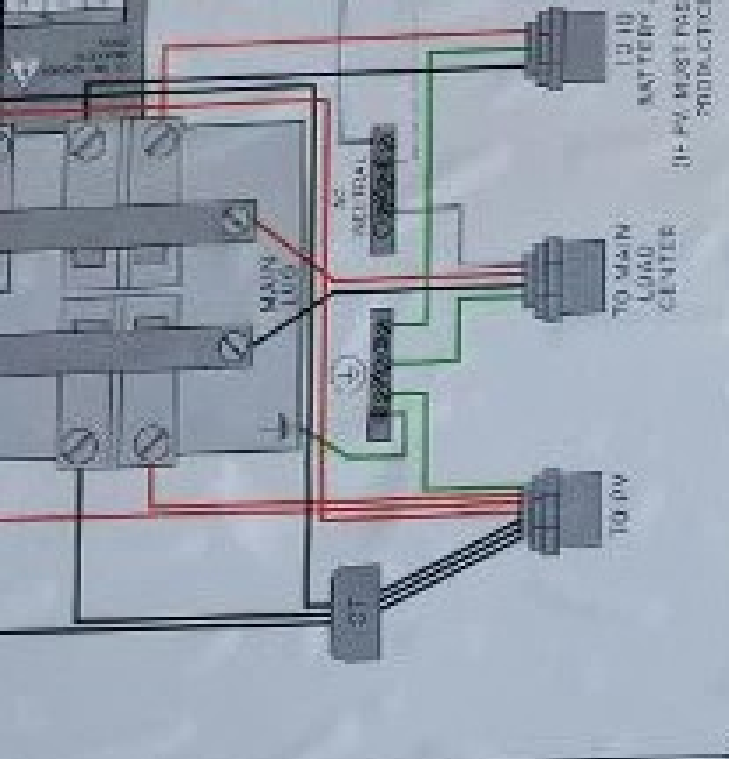
SON 20211104047 P/N 385J0820-11-5-SE

For more information and for combiner boxes, visit www.enphase.com or call 1-800-451-7347. Always use proper wiring techniques.

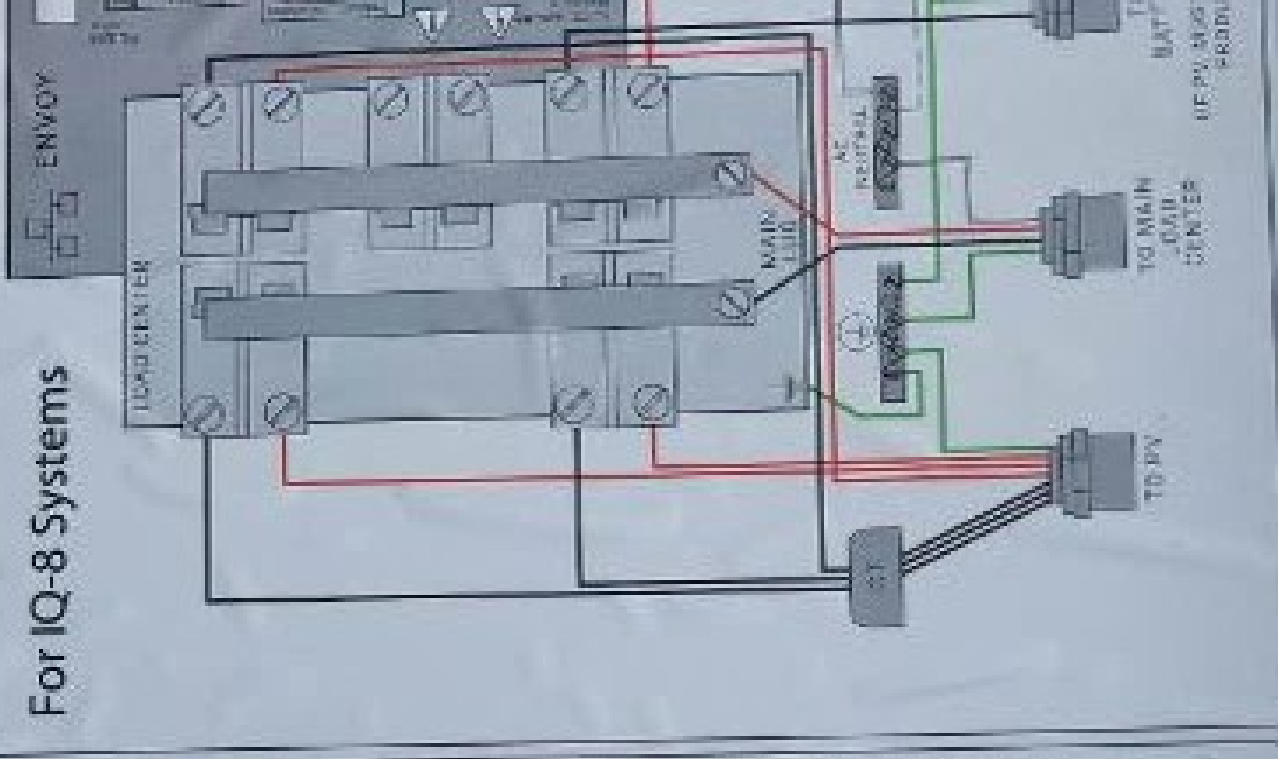
Termination	Wire sizes	Torque
DC Breaker	14-18 AWG 18-22 AWG	2.2 Nm (20 in-lb) 2.0 Nm (18 in-lb)
DC Combiner only	14-18 AWG 18-22 AWG	2.2 Nm (20 in-lb) 2.0 Nm (18 in-lb)
Neutral and ground	10-12 AWG 8-10 AWG	0.5 Nm (45 in-lb) 2.2 Nm (20 in-lb)
Large conductors	18-4 AWG 14-10 AWG	5.0 Nm (45 in-lb) 5.0 Nm (45 in-lb)

Combiner connectors are rated max. 25°C.
 Follow NFPA 70 (NEC) or CSA C22.1 (Canadian) and all local codes.
 For DC Breakers larger than 20A, ratings required for NEC
 found in 240.4(D)(4).

Designed in California and New Zealand
 Made in Vietnam



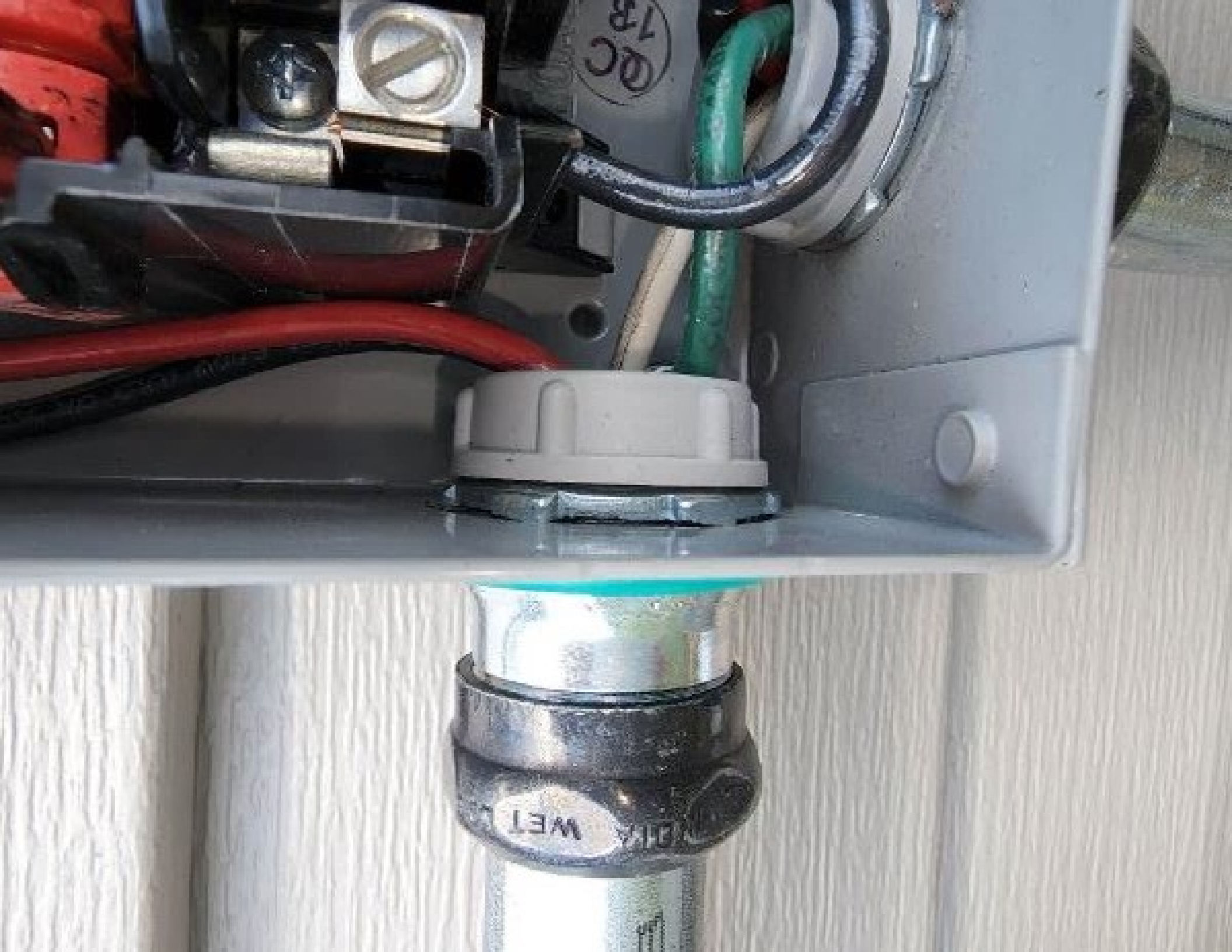
For IQ-8 Systems



TO PV BATTERY
 2000A/100VDC

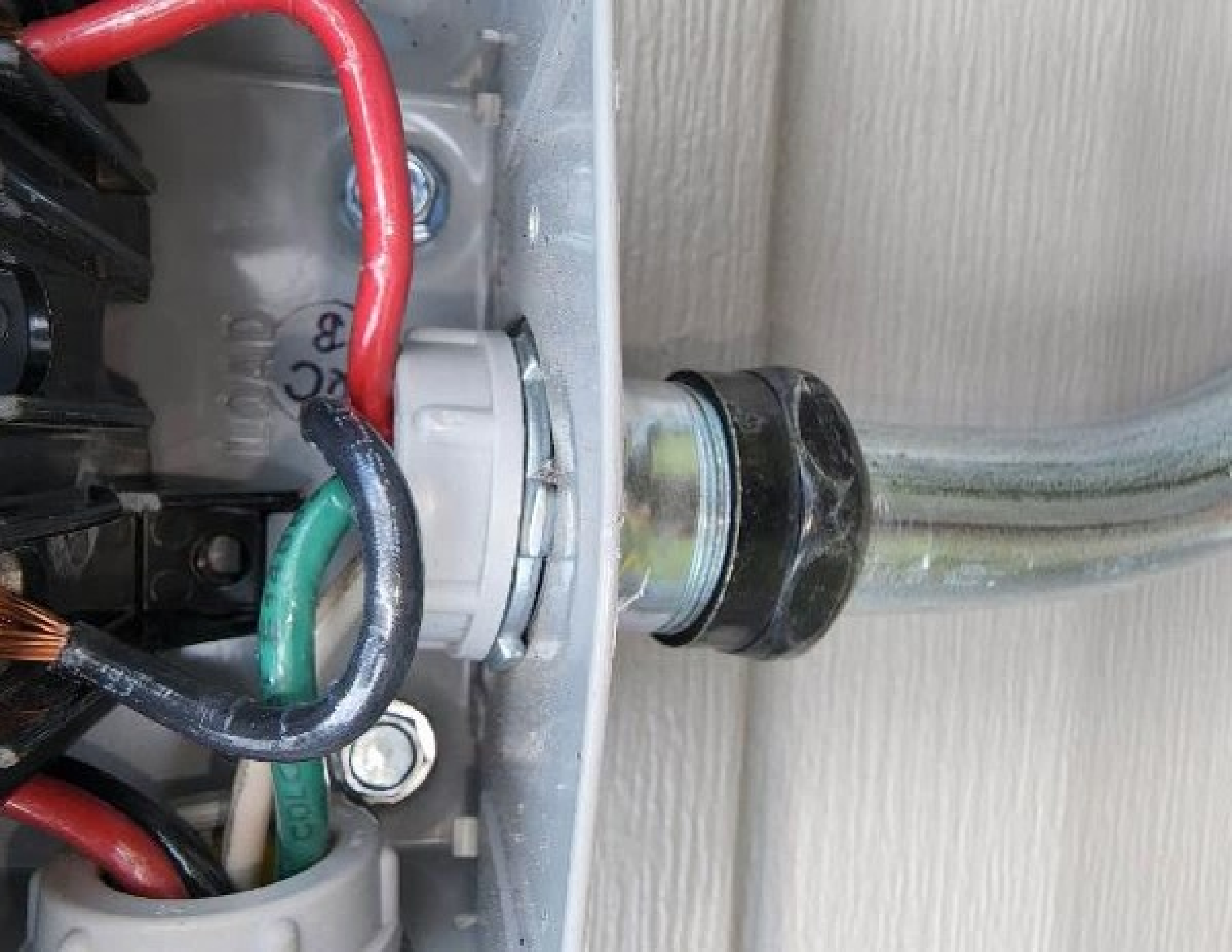






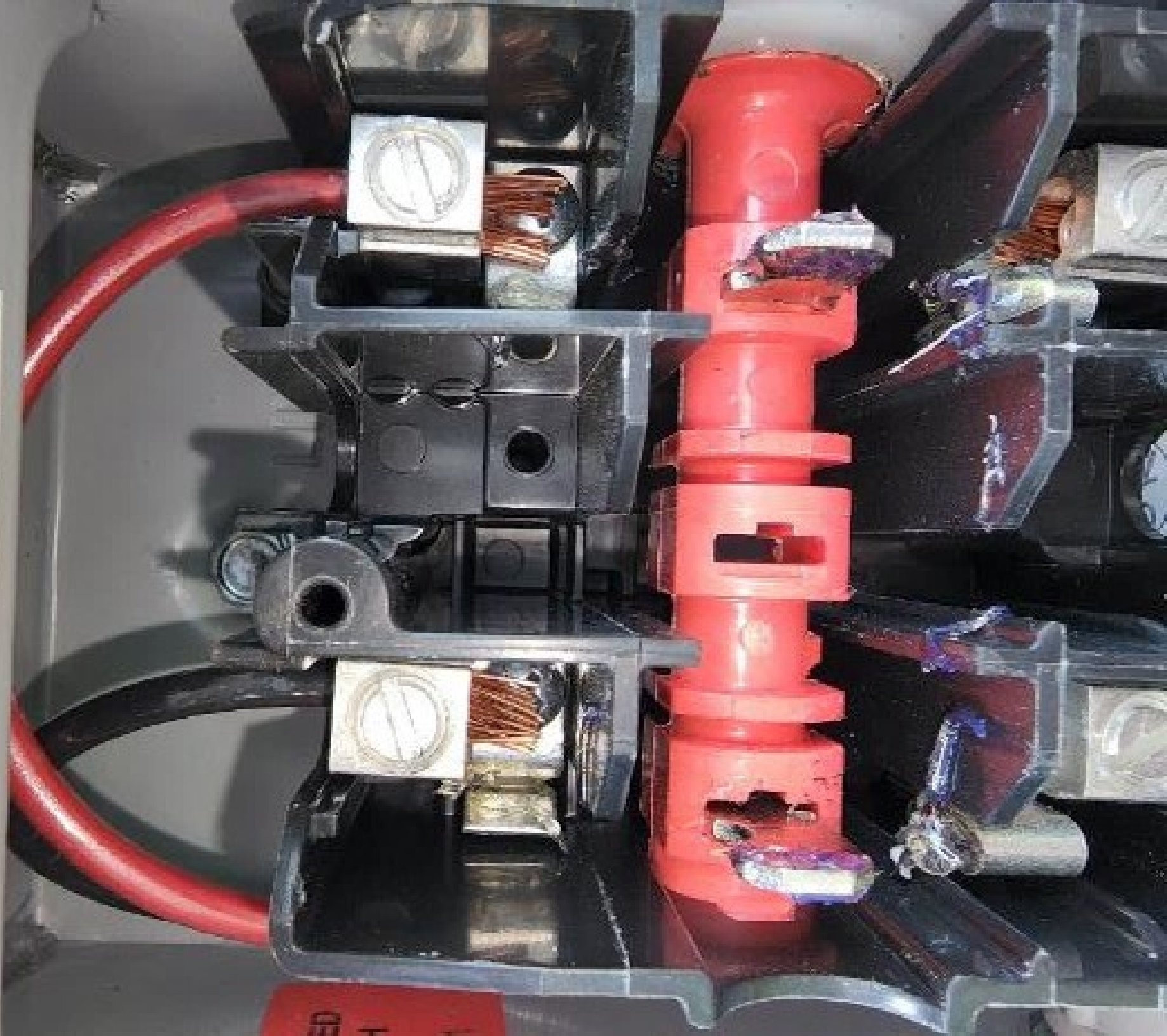
DC
18

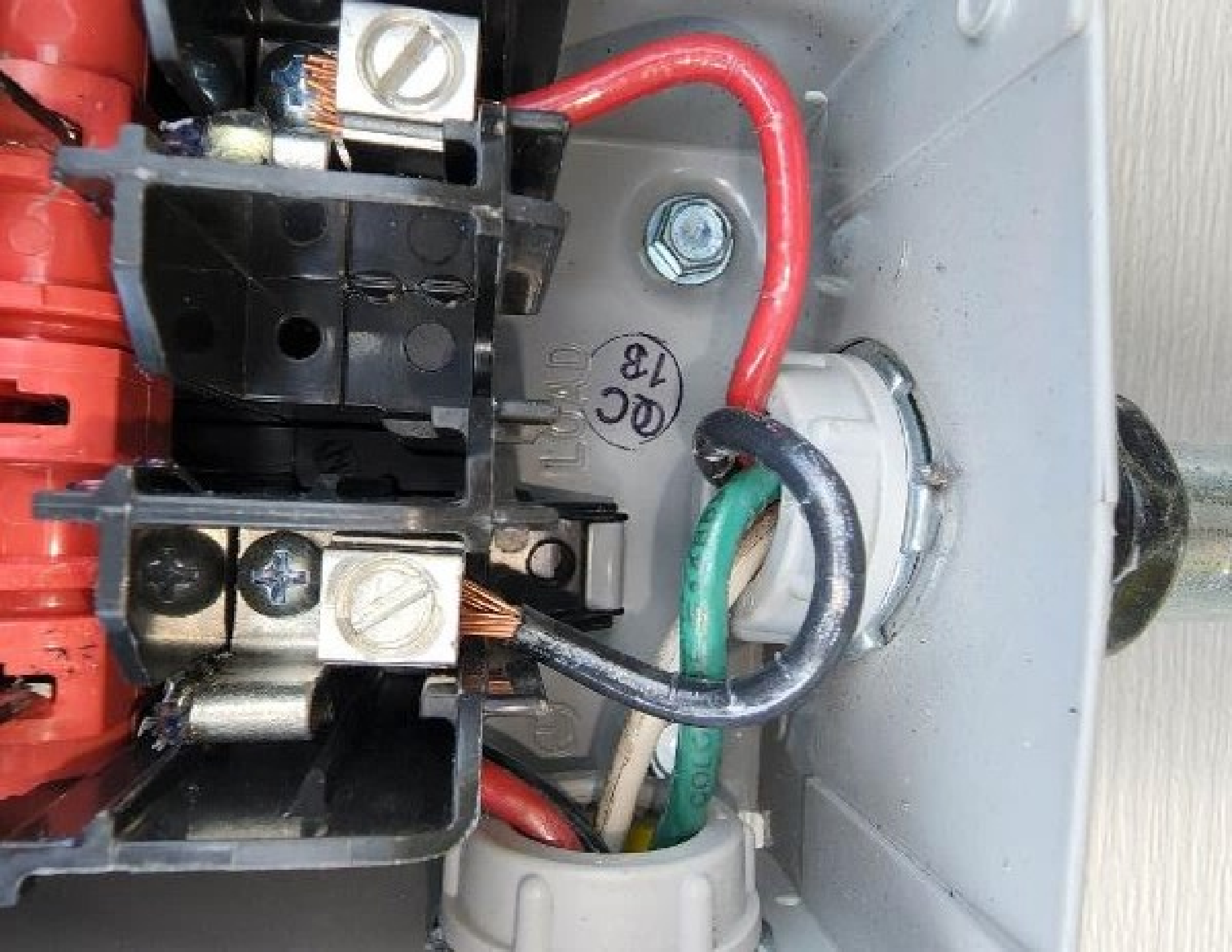
DIA MET



8 2021

Turn off switch before removing or installing fuses.
Always use a properly rated voltage sensing device on all fuse clips (Fusible) or all load side terminals (Non-Fusible) to confirm switch is off.
Close or replace cover before turning power on.











Site Hazard Analysis

CUSTOMER NAME: Tyruba Horvath
 INSTALLATION DATE: 7-5-22

ADDRESS: 106 Norris Farm Dr. Angier, NC 27501

HAZARD CATEGORY	POTENTIAL HAZARD	HAZARD CONTROL
Ladder Safety	<ul style="list-style-type: none"> Overhead Substantive Unauthorized 	Ladder 3ft above eave and horns
Fall Protection	<ul style="list-style-type: none"> Not from 6' or greater 	Proper anchors and harness or ropes
Electrical Safety	<ul style="list-style-type: none"> Overvoltage ARC flash 	Wear PPE, use proper tools
Heat & Related Issues	<ul style="list-style-type: none"> High heat, 80° or 90° Excessive heat, 100° or more 	Break when needed and stay hydrated
Public Protection	<ul style="list-style-type: none"> Working around equipment 	Caution tape around site of cones
NEAREST HOSPITAL:	Central Harnett Hospital 215 Brightwater Dr. Lillington, NC 27511	
SAFETY CONTACT:	Henry Mall: 788-896-5514	
ADDITIONAL NOTES		
Falling Objects	Falls	Proper Lifting
Slips	Cuts	Weather Conditions
Trips	Weather Conditions	
Crew Members		
!	NAME	
!	Dustin Burger	
!	William Stull	
!	Clayton Strickland	
!		
!		

E. Frain Cruz A. Frain Cruz
Crew Lead (left) Crew Lead (right)

⚠ WARNING

THIS EQUIPMENT IS BY MULTIPLE SOURCES. TOTAL RATINGS OF ALL OVERCURRENT DEVICES, EXCLUDING MAIN SUPPLY OVERCURRENT DEVICE, SHALL NOT EXCEED CAPACITY OF BUSBAR.

⚠ WARNING

ELECTRIC SHOCK HAZARD
TERMINALS ON THE LINE AND LOAD SIDES MAY BE ENERGIZED IN THE OPEN POSITION

⚠ WARNING

PHOTOVOLTAIC SYSTEM COMBINER PANEL
DO NOT ADD LOADS

**PHOTOVOLTAIC SYSTEM
AC DISCONNECT** ⚠

RATED AC OUTPUT CURRENT A
SERIAL OPERATING VOLTAGE V

⚠ WARNING

READ INSTRUCTIONS FIRST BY THE OPERATOR. FAILURE TO FOLLOW ALL SAFETY INSTRUCTIONS MAY RESULT IN DEATH OR SERIOUS INJURY. ALWAYS USE PROPER SAFETY PROCEDURES. ALWAYS WEAR YOUR SAFETY GEAR. ALWAYS USE THE LOCKOUT TAGOUT PROCEDURE.



ENPHASE



WARNING
ELECTRIC SHOCK
DEATH

CAUTION
HOT SURFACES
BURN

WARNING
ELECTRIC SHOCK
DEATH

CAUTION
HOT SURFACES
BURN





SERVICE DISCONNECT

Panel - 1st - Garage

SERVICE DISCONNECT

AIC UNIT

PL. SOLID BREAKER
DO NOT RELOCATE
AREA TO BE DISCONNECTED
BY THE



SERVICE DISCONNECT

HVAC &

SERVICE DISCONNECT

RANGE -

SERVICE DISCONNECT

W-H

















ING. PHOTOVOLTAIC
SOURCE















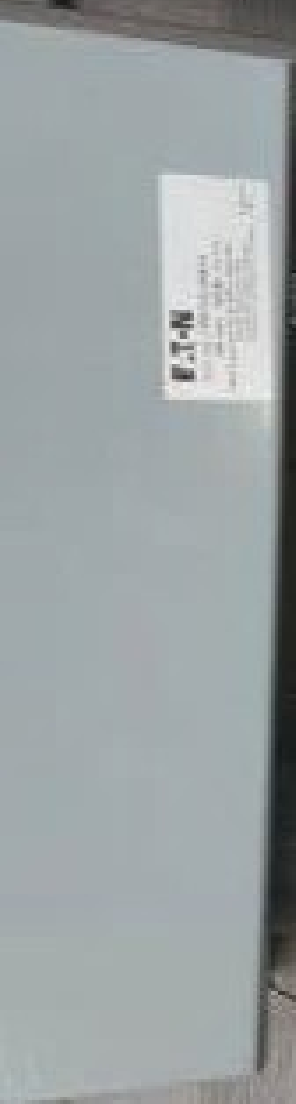


021

W40-00388-14
250VAC 20A
+79°C 2103



01 02





ENPHASE

IQ7+

See the support page for the
ENPHASE IQ7+ at www.enphase.com
for more information.

ENPHASE IQ7+
The only intelligent inverter in
the world that can be used in
any configuration.

• 100% efficiency
• 100% uptime
• 100% safety
• 100% reliability

ENPHASE IQ7+
The only intelligent inverter in
the world that can be used in
any configuration.

ENPHASE IQ7+
The only intelligent inverter in
the world that can be used in
any configuration.

ENPHASE IQ7+
The only intelligent inverter in
the world that can be used in
any configuration.

ENPHASE IQ7+
The only intelligent inverter in
the world that can be used in
any configuration.

ENPHASE IQ7+
The only intelligent inverter in
the world that can be used in
any configuration.



This device is listed by UL as a Class 2, Limited Power Source (LPS) in accordance with the following UL Standard: UL 1973, Class 2 Limited Power Source (LPS). This device has been tested and found to comply with the applicable UL Standard. For more information, please visit www.enphase.com.

WARNING: Electric shock may occur when the device is connected to the AC power source. Do not touch the AC terminals or the AC power source. Do not touch the AC power source when the device is connected to the AC power source. Do not touch the AC power source when the device is connected to the AC power source. Do not touch the AC power source when the device is connected to the AC power source.

ATTENTION: This device is not to be used in a wet or damp location. Do not use this device in a wet or damp location. Do not use this device in a wet or damp location. Do not use this device in a wet or damp location. Do not use this device in a wet or damp location.



250 FT

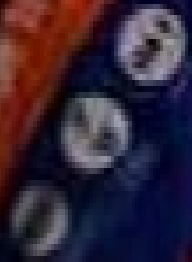
250 FT

250 FT

1020 NIP &

1020 NIP &

1020 NIP &



UNIRAC 5FM INFINITY RACKING
FOR CONCRETE AND MASONRY WALLS
UNIRAC 5FM INFINITY RACKING



FLASHKIT SFM TRIM S

004201D



FLASHKIT SFM TRIM S COMP DARK
Pack Size 10

UPC Code



Assembly Date:
1/10/21-3/10/21
190P0004201D





LIRAC
LETTER SOLAR STARTS HERE

www.lirac.com



253020U

SFM MICRORAIL 2

Pack Size: 10

WO/POW : 0044373-00

Manufacture date: ~~11/11~~ 2011

Factory Code : 010A



810039383400

MONIRAC®



FLASHKIT SFM SLIDER S

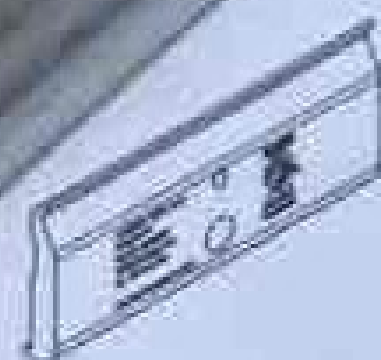
004271D



1. Mount on the slider of the device
2. Push the slider to the
right side of the device



Barcode number: 004271D



UNIRAC
BETTER SOLAR STARTS HERE

www.unirac.com



008114M
MLPE MOUNT ASSY
Pack Size - 10

WG/PG# 0044057-00
Manufacture date: 05/2021
Factory Code: G25A

California Proposition 65 - (P) WARNING: Cancer and
Reproductive Harm - www.unirac.com

 **UNIRAC**

BETTER IDEAS START HERE

WWW.UNIRAC.COM



250111J

SFM UNV TRIMRAIL CLIP DARK

Pack Size - 10

WO/PO# 0044134-02

Manufacture date: 05/2021

Factory Code: 018A



California Proposition 65 - P. WARNING: Cancer and
Reproductive Harm - www.p65warnings.ca.gov



JOURNAL
JOURNAL

 **UNIRAC**
BETTER SOLAR STARTS HERE

www.unirac.com



253010U

SFM SPLICE 6.5"

Pack Size: 10

WO/PO#: 0043974-00

Manufacture date: **APR 2011**

Factory Code : 010A

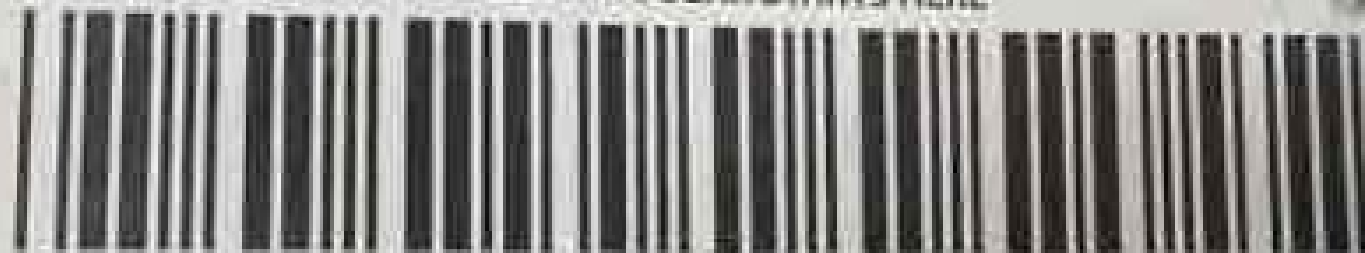


810039383379

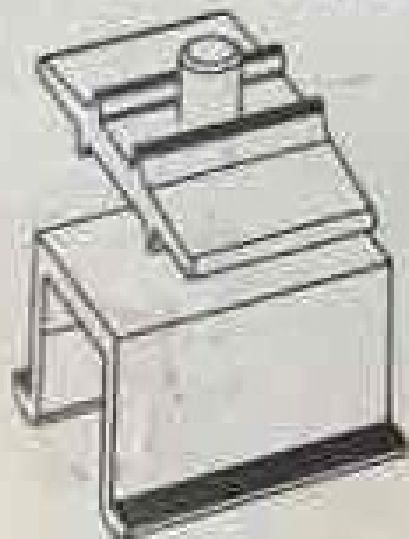


UNIRAC

BETTER SOLAR STARTS HERE



SFM N/S BONDING CLAMP 008000U



UPC Code



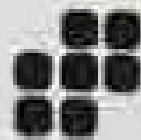
Pack Size: 20

Assembly Date:

12/10/20-01/10/21

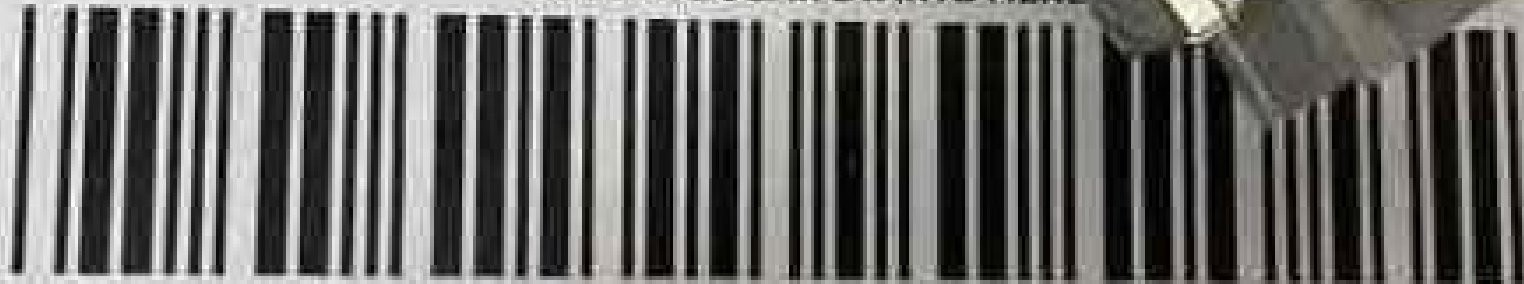
PO#0043552-00

California Proposition 65  WARNING: Cancer and Reproductive Harm - www.P65Warnings.ca.gov



UNIRAC

BETTER SOLAR STARTS HERE



SFM TRIM BONDING CLAMP 008100U

UPC Code



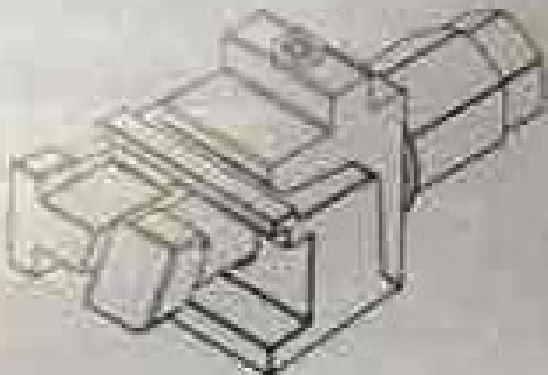
1003936104

Pack Size: 10

Assembly Date:

12/10/20-01/10/21

PO#0043552-00



California Proposition 65  WARNING: Cancer and Reproductive Harm - www.P65Warnings.ca.gov



FLASHKIT SFM TRIM S

004201D



FLASHKIT SFM TRIM S COMP DARK
Pack Size 10

UPC Code



Assembly Date:
1/10/21-01/10/21
1700000000000



Shipping label with barcode and QR code. Text includes "JOURNAL" and "TYPING".

 **UNIRAC**
BETTER SOLAR STARTS HERE

www.unirac.com



253010U

SFM SPLICE 6.5"

Pack Size: 10


WO/PO#: 0043974-00


Manufacture date: **APR 2011**

Factory Code : 010A



810039383379






Write a paragraph describing the house in the photograph.

<p>Section 1</p> <p>Write a paragraph describing the house in the photograph.</p>	<p>Section 2</p> <p>Write a paragraph describing the house in the photograph.</p>	<p>Section 3</p> <p>Write a paragraph describing the house in the photograph.</p>
--	--	--

Write a paragraph describing the house in the photograph.





Terminal labels: L/A, A, Wf2, E, W, K, R, RC, S, S, Y, Y2, G, C, U, U.

Switch mechanism labels: U & R WIRES, 1 WIRE, 2 WIRES.

194312036950
3232104B-001

Your exposed wire should be this length
1/4" to 3/8"

0" 1/4" 3/8" 1"



ecobee

RH
C
W1
W2
PEK

Rc
G
Y1
Y2
O/B



8 2021

Turn off switch before removing or installing fuses
and equipped.

Always use a properly rated voltage sensing
device on all fuse clips (Fusible) or all load side
terminals (Non-Fusible) to confirm switch is off.
- Check or replace cover before turning power on.











