

1:58

LTE

Grid Monitoring Completed.

Pairing Completed.



**solar**edge  
SN 740AEFEA-57



### Status

## Inverter

SN 740AEFEA-57

### Summary

 Power <b>6.47 kW</b>	 Voltage <b>245 Vac</b>	 Frequency <b>60 Hz</b>
-----------------------------	-------------------------------	-------------------------------

P\_OK: 28 of 28  
**Optimizers Communicating**

Server Comm.   
**No cable  
Ethernet**

Status <b>Production</b>	Power Limit <b>7.6 kW</b>	Switch is <b>On</b>
Cos Phi	Q	Country

Disconnect from device





# WARNING

THIS EQUIPMENT FED BY  
MULTIPLE SOURCES:  
TOTAL RATING OF ALL OVERCURRENT  
DEVICES EXCLUDING MAIN POWER  
SUPPLY SHALL NOT EXCEED  
AMPACITY OF BUSBAR

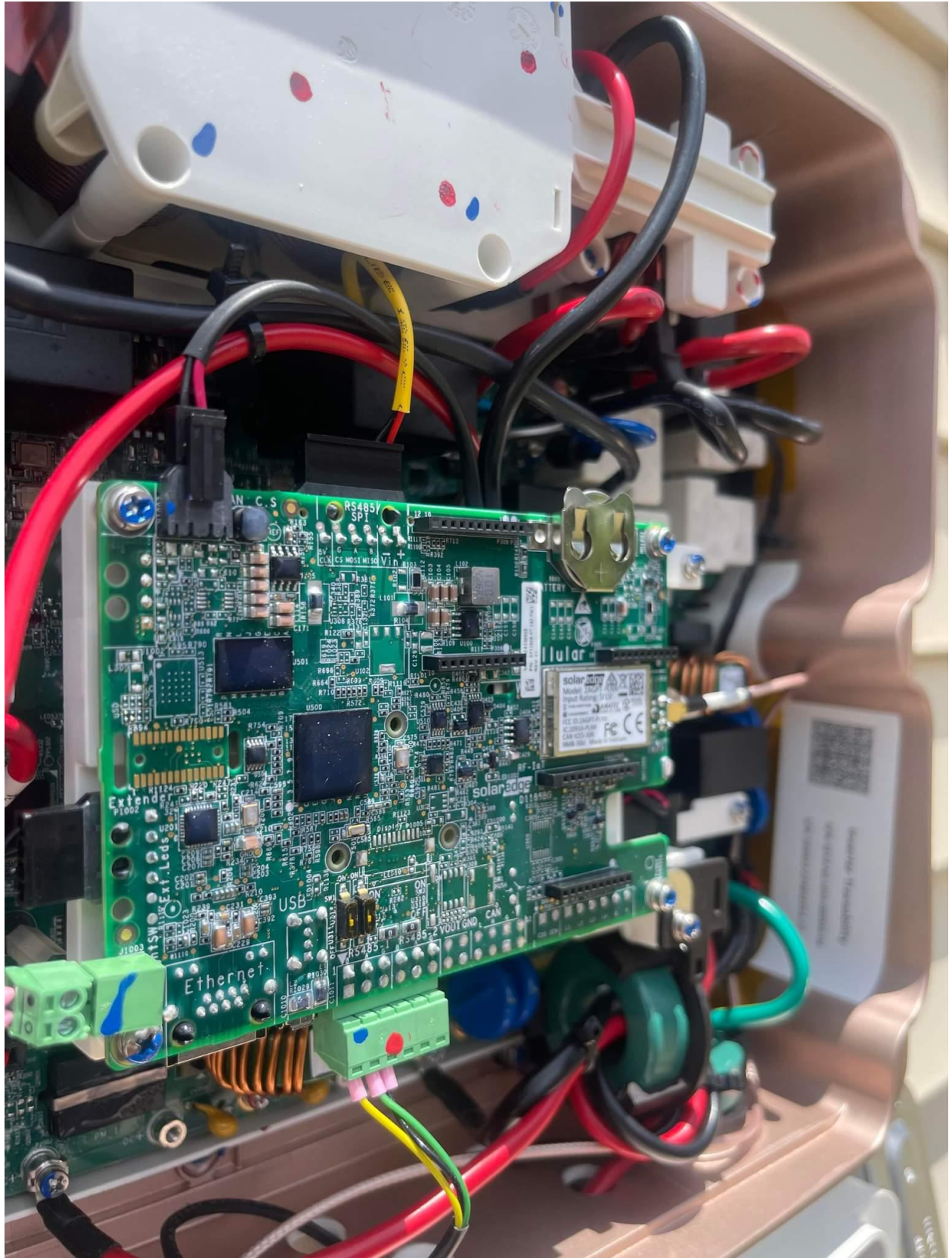
596-03942



# WARNING

THIS EQUIPMENT FED BY  
MULTIPLE SOURCES:  
TOTAL RATING OF ALL OVERCURRENT  
DEVICES EXCLUDING MAIN POWER  
SUPPLY SHALL NOT EXCEED  
AMPACITY OF BUSBAR

596-03942







REGISTRY / DIRECTORIO

2	
4	
6	MAIN
8	PHONE
10	
12	
14	
16	
18	
20	

SQUARE D COMPANY

**⚠ DANGER**  
Hazard of Electric Shock  
Explosion or Arc Flash

**⚠ PELIGRO**  
Peligro de Choque Eléctrico  
Explosión o Arco Eléctrico

Panel of circuit breakers with labels:

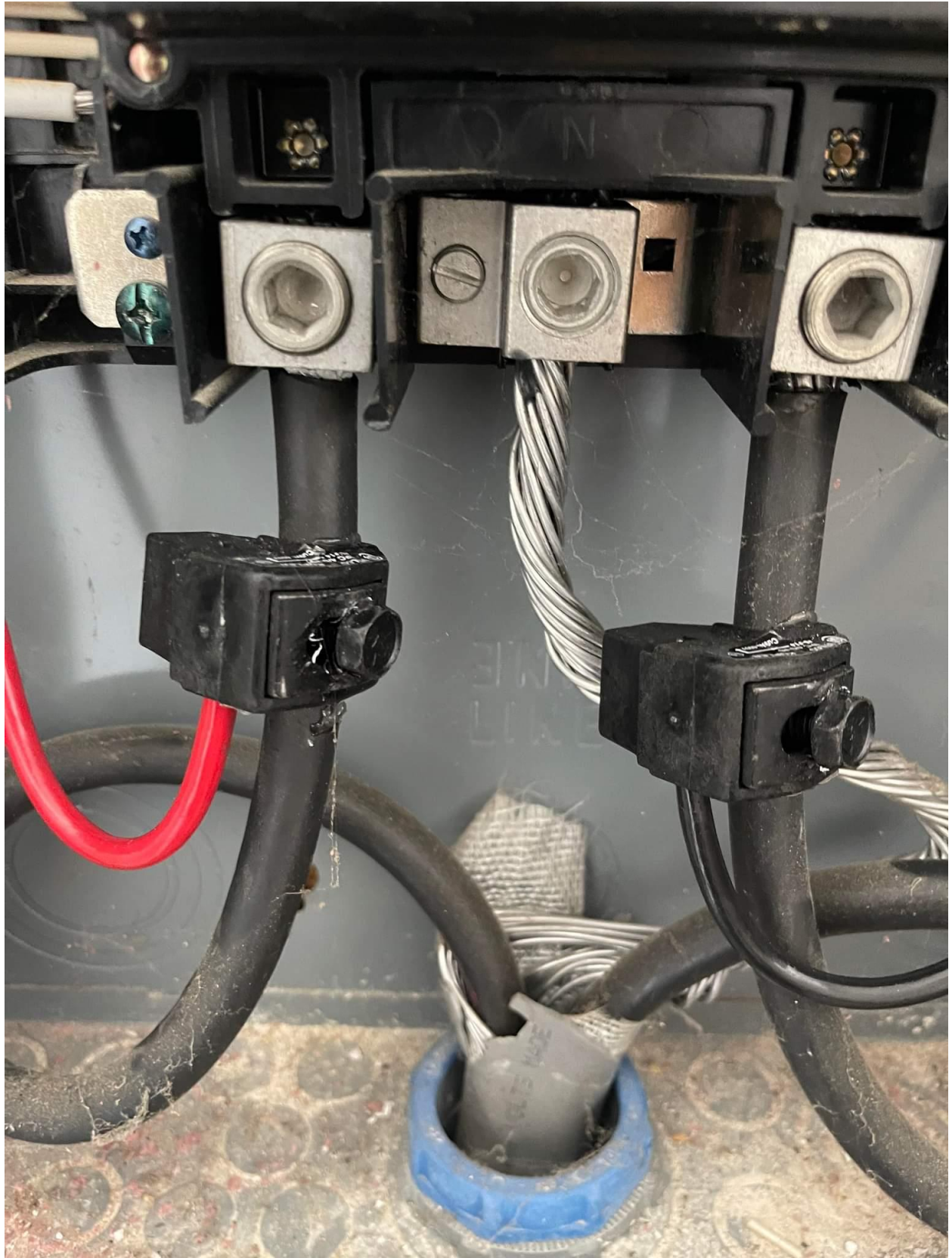
- CIRCUIT 1 (top right)
- CIRCUIT 1 (middle right)
- 10 A (top right breaker)
- 10 A (middle right breaker)
- 10 A (bottom right breaker)
- 10 A (top left breaker)
- 10 A (middle left breaker)
- 10 A (bottom left breaker)

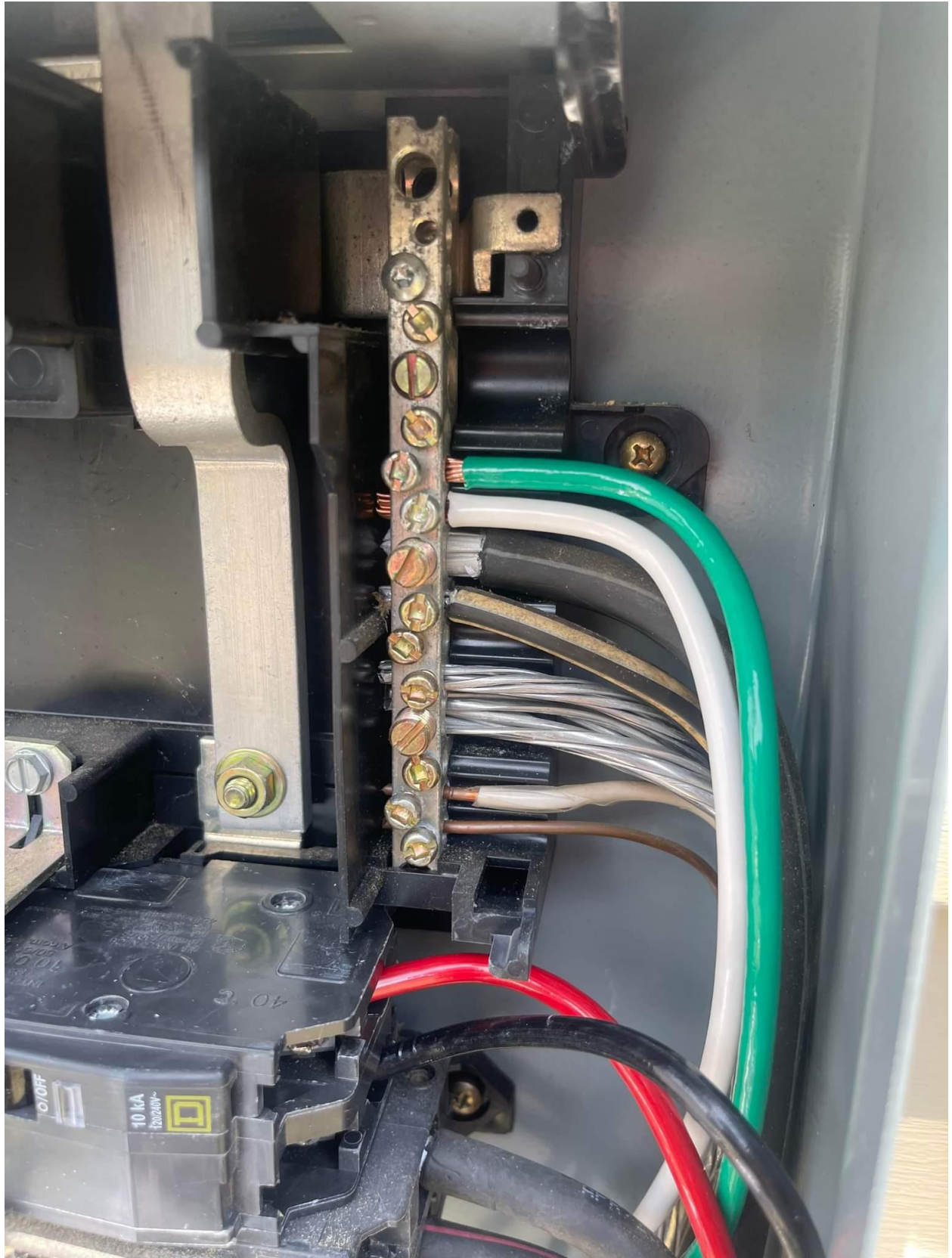
CIRCUIT 1

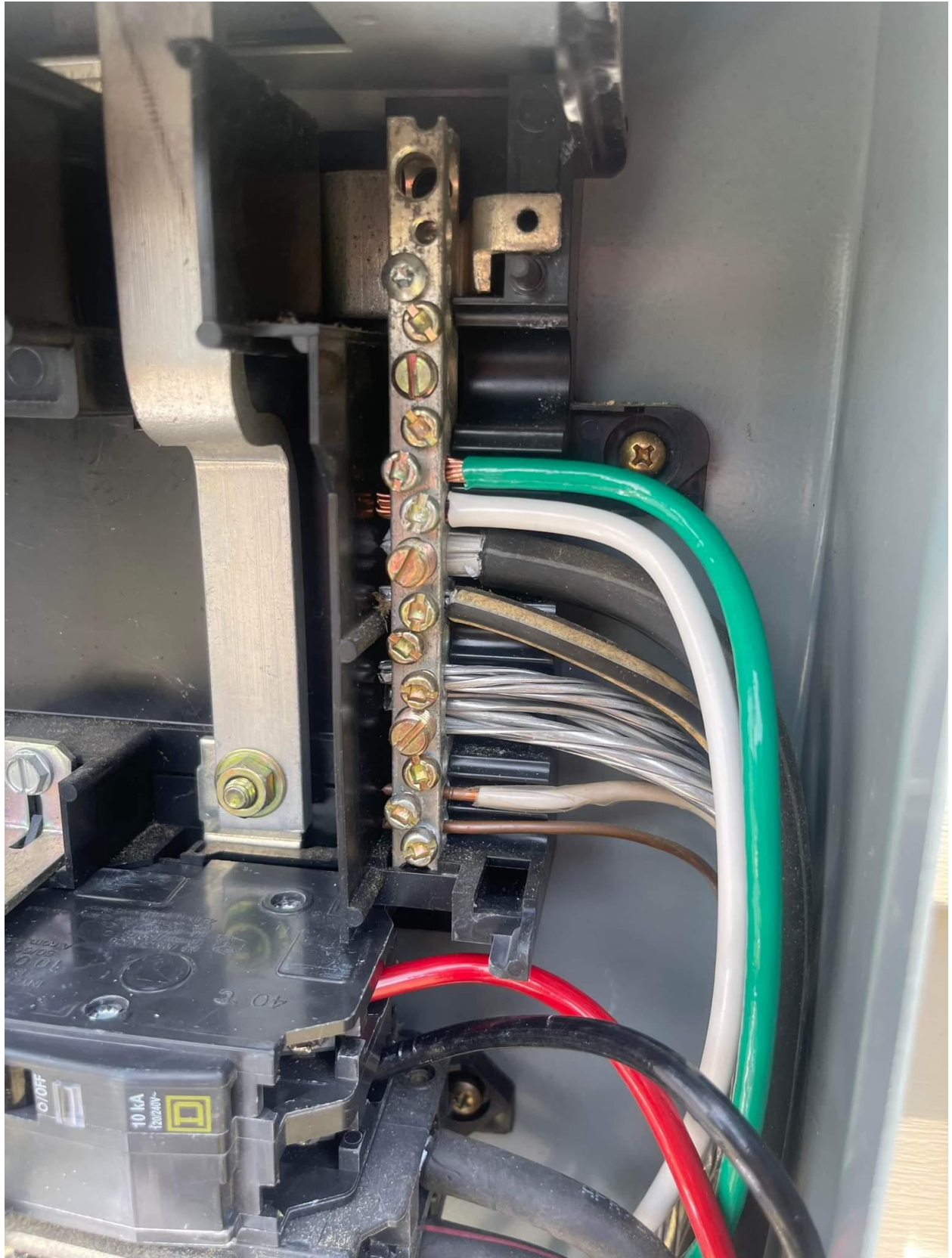
CIRCUIT 1



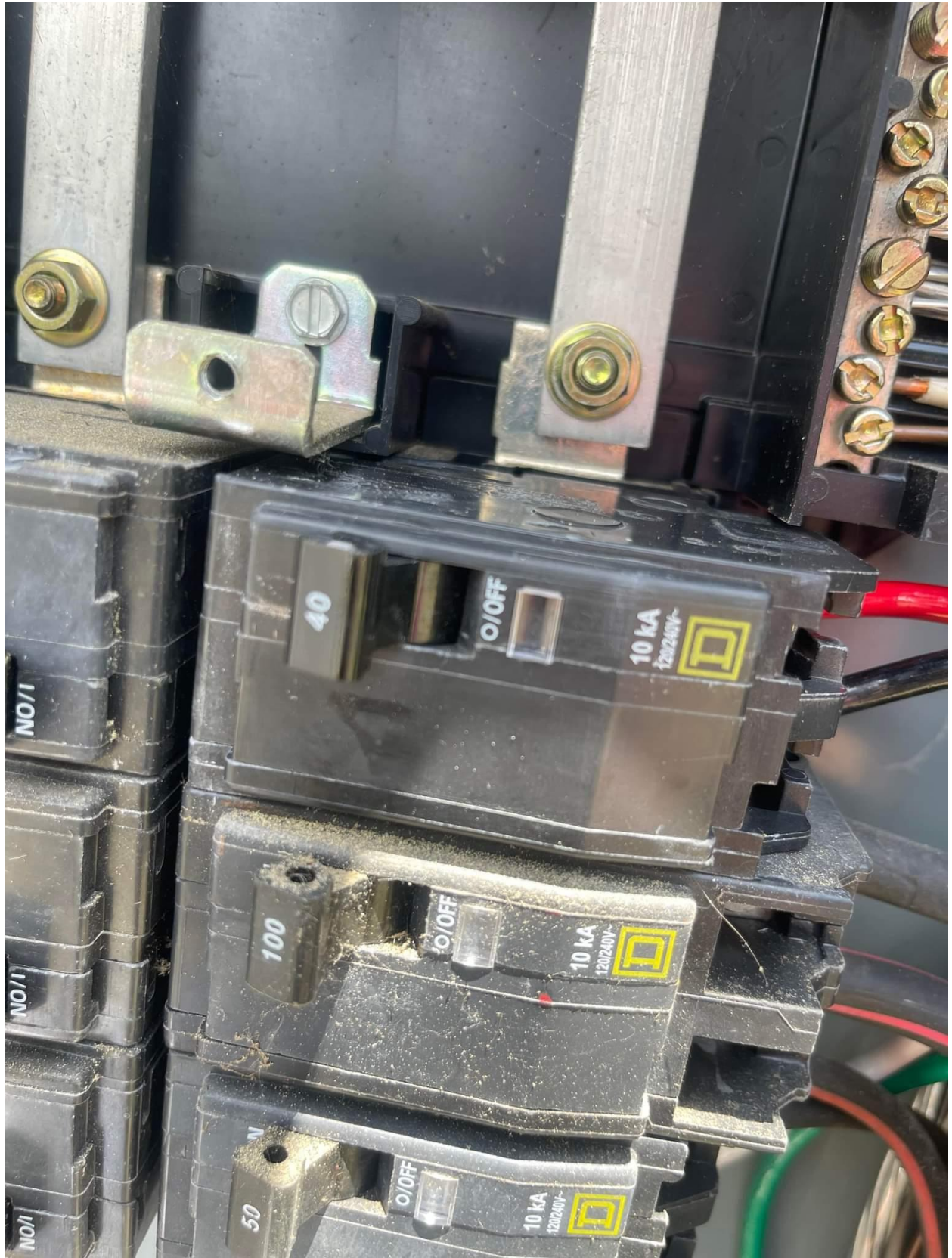






















2 STRAWS  
14 (S1)  
14 (S2)

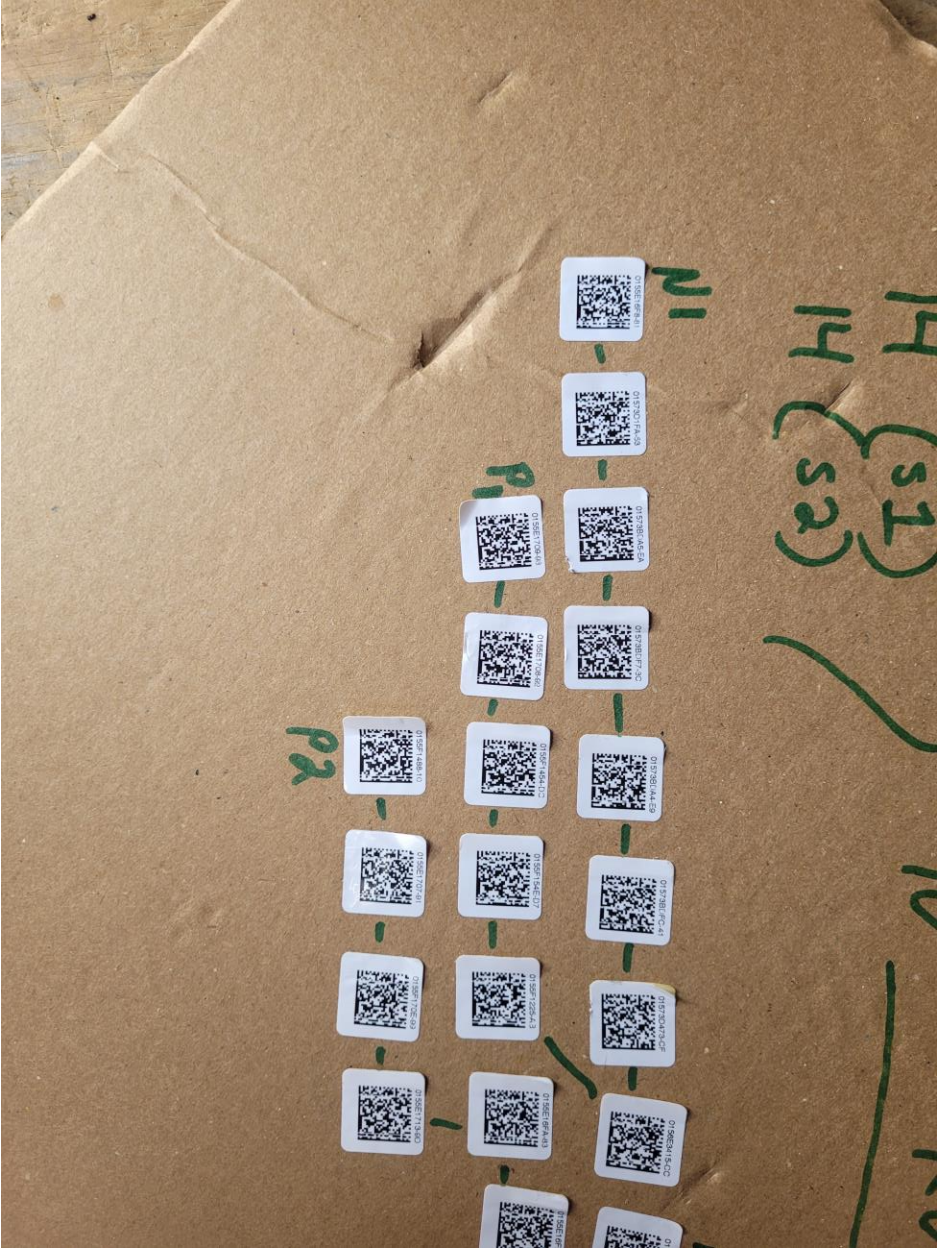
JADE  
3 WIPANU  
10 22KW

M1

P1

P2

M2





P2

N2

10







**WARNING** ELECTRIC SHOCK HAZARD. THE DC CONDUCTORS OF THIS PHOTOVOLTAIC SYSTEM ARE UNGROUNDING AND MAY BE ENERGIZED.

**AVERTISSEMENT** RISQUE DE CHOC ELECTRIQUE: QUAND LE CHAMP PHOTOVOLTAIQUE EST EXPOSE A LA LUMIERE, UNE TENSION CC EST FOURNIE A CET EQUIPEMENT. SURFACES CHAUDES: NE PAS TOUCHER, AFIN DE REDUIRE LES RISQUES DE BRULURES LE QUANT DE RETOUR INJECTE PAR LE CONVERTISSEUR EN TOUJOURS NULL.

**CAUTION** HOT SURFACES-TO REDUCE THE RISK OF BURNS-DO NOT TOUCH PHOTOVOLTAIC ARRAY IS EXPOSED TO LIGHT, IT SUPPLIES A DC VOLTAGE TO EQUIPMENT. COVER PV MODULE WITH OPAQUE MATERIAL BEFORE DISCONNECTING THIS OPTIMIZER DURING FAULT, ZERO CURRENT IS SOURCED INTO DC ARRAY BY CONVERTER.



Do Not Remove 15587733-90  
Sonnengigant Technologie GmbH  
Werner-Strasse 10/123 Munich/Germany



