







VS32108242741G



Photovoltaic Module

Module Type:	F6M365E7G-BB
Maximum Power(Pmpp):	365W
Open Circuit Voltage(Voc):	40.7V±3%
Short Circuit Current(Isc):	11.43A±3%
Maximum Power Voltage(Vmpp):	34.2V
Maximum Power Current(Imp):	10.68A
Max System Voltage:	1000V
Tolerance of Pmpp:	±3%
Power Sorting:	0~+5W
Series Fuse Rating:	20A
Dimension:	1762×1048×35(mm)
Weight:	19.6kg
Standard Test Condition:	1000W/m ² , 25°C, AM1.5
PV module classification:	Type 2(For USA only) Class C(For Canada only)



See installation instructions for
Installation Requirements to
Achieve a Specified System Fire
Class Rating with this Product.



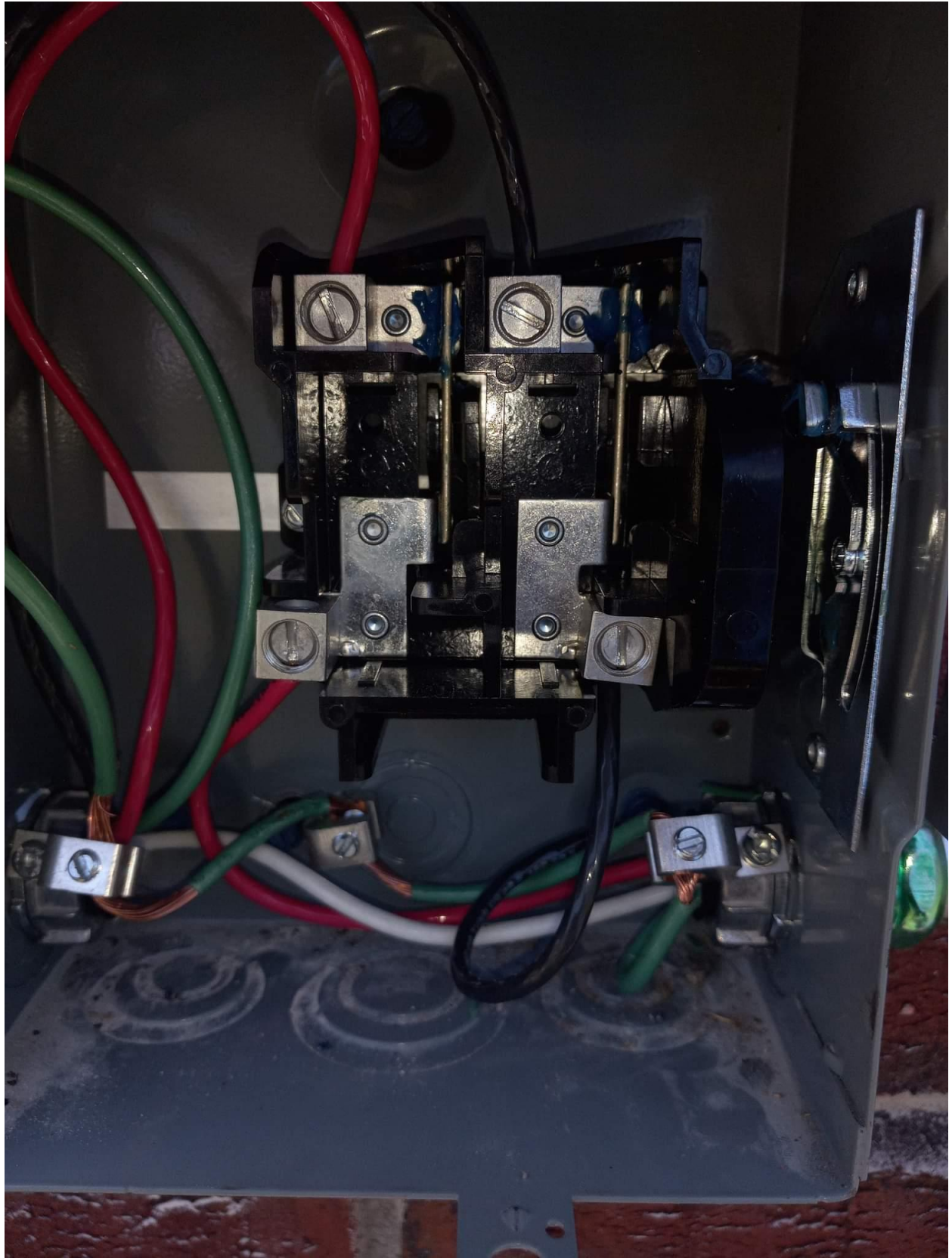
WARNING
Hazardous Electricity Can shock,
burn or cause death. Do not
touch terminals.
L'électricité dangereuse peut le faire
Choc électrique ou électrocution. Ne touchez
pas le terminal.



United Renewable Energy Co., Ltd

7, Li-Hsin 3rd Rd., Hsinchu Science Park, Hsinchu, 30078, Taiwan, R.O.C

Module Assembly: VN
<http://www.urecorp.com/>









VS32108241387G



Photovoltaic Module

Module Type:	F6M365E7G-BB
Maximum Power(Pmpp):	365W
Open Circuit Voltage(Voc):	40.7V±3%
Short Circuit Current(Isc):	11.43A±3%
Maximum Power Voltage(Vmpp):	34.2V
Maximum Power Current(Imp):	10.68A
Max System Voltage:	1000V
Tolerance of Pmpp:	±3%
Power Sorting:	0~+5W
Series Fuse Rating:	20A
Dimension:	1762×1048×35(mm)
Weight:	19.6kg
Standard Test Condition:	1000W/m ² , 25°C, AM1.5
PV module classification:	Type 2(For USA only) Class C(For Canada only)



See installation instructions for Installation Requirements to Achieve a Specified System Fire Class Rating with this Product



WARNING
Hazardous Electricity Can shock, burn or cause death. Do not touch terminals.
L'électricité dangereuse peut le faire. Choisissez brûlures ou décès. Ne touchez pas le terminal.



United Renewable Energy Co., Ltd
7, Li-Hsin 3rd Rd., Hsinchu Science Park, Hsinchu, 30078, Taiwan, R.O.C
Module Assembly: VN
<http://www.urecorp.com/>



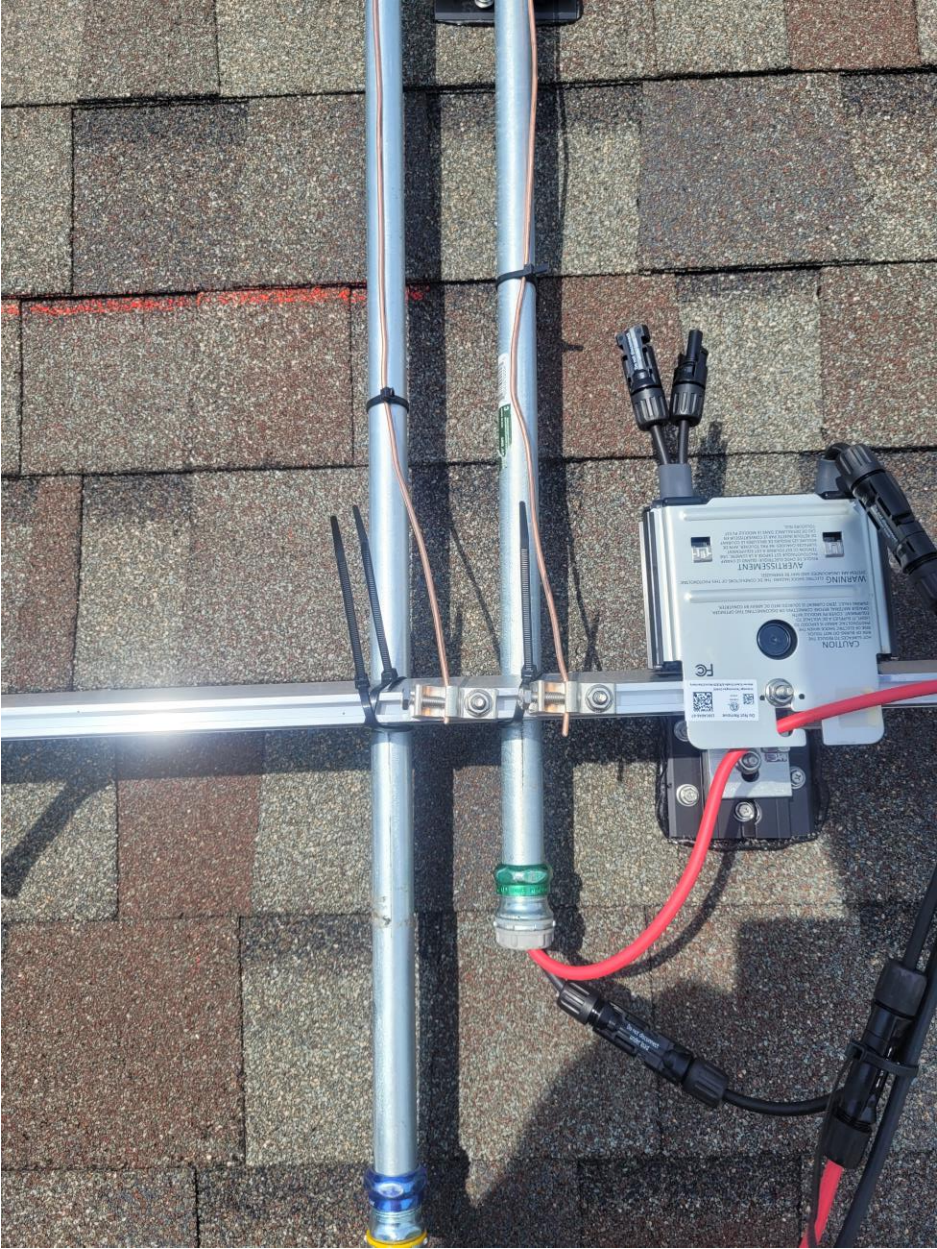




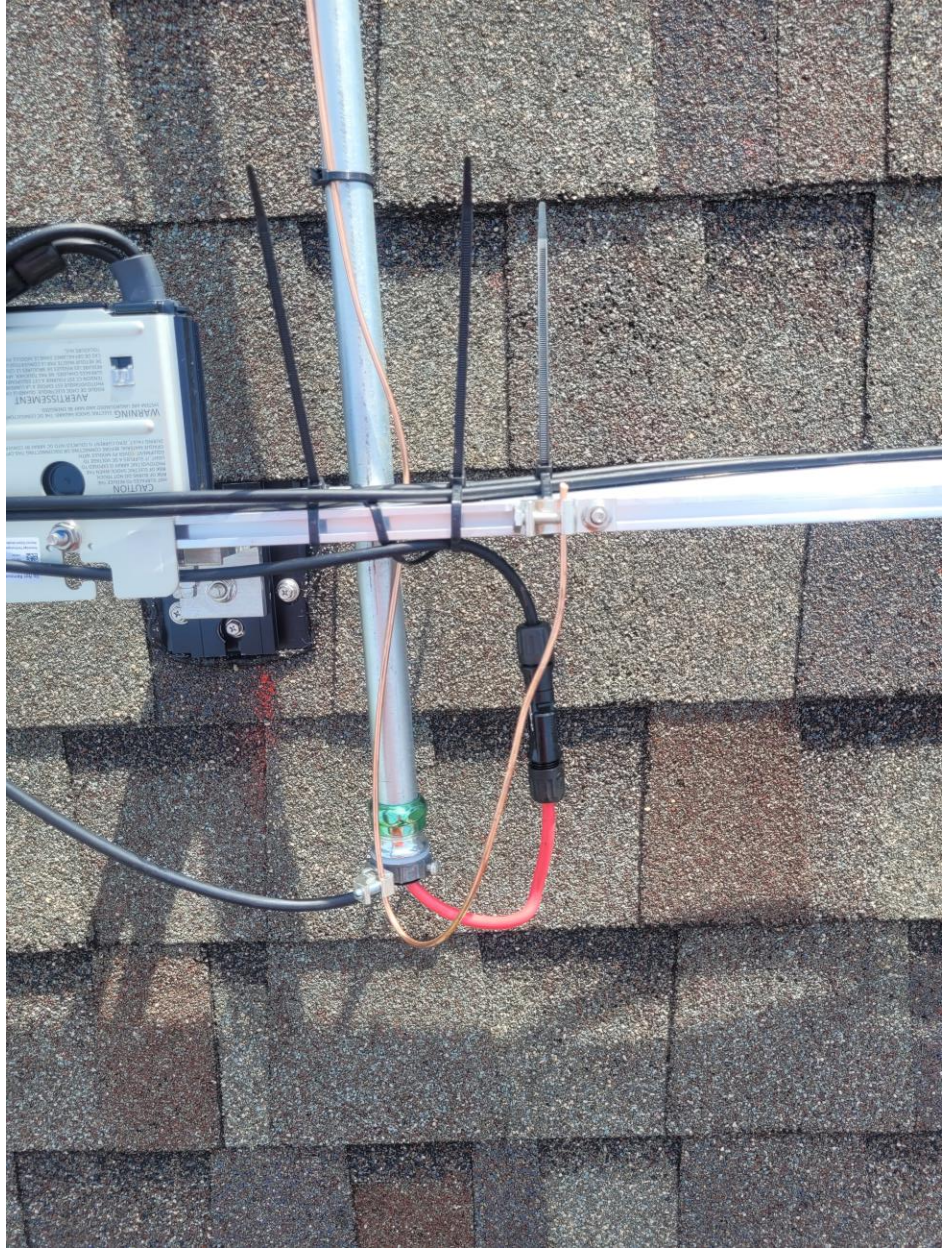




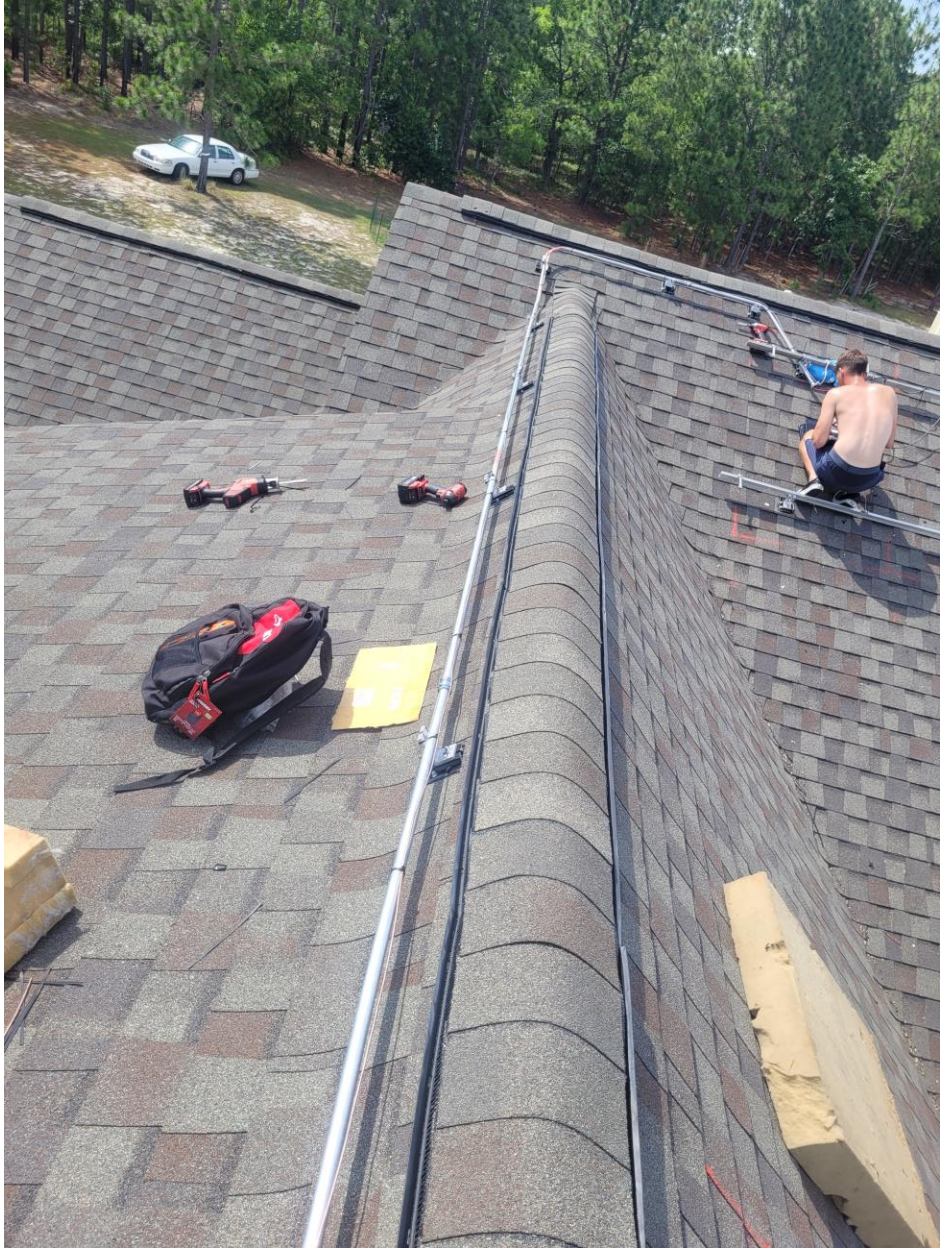


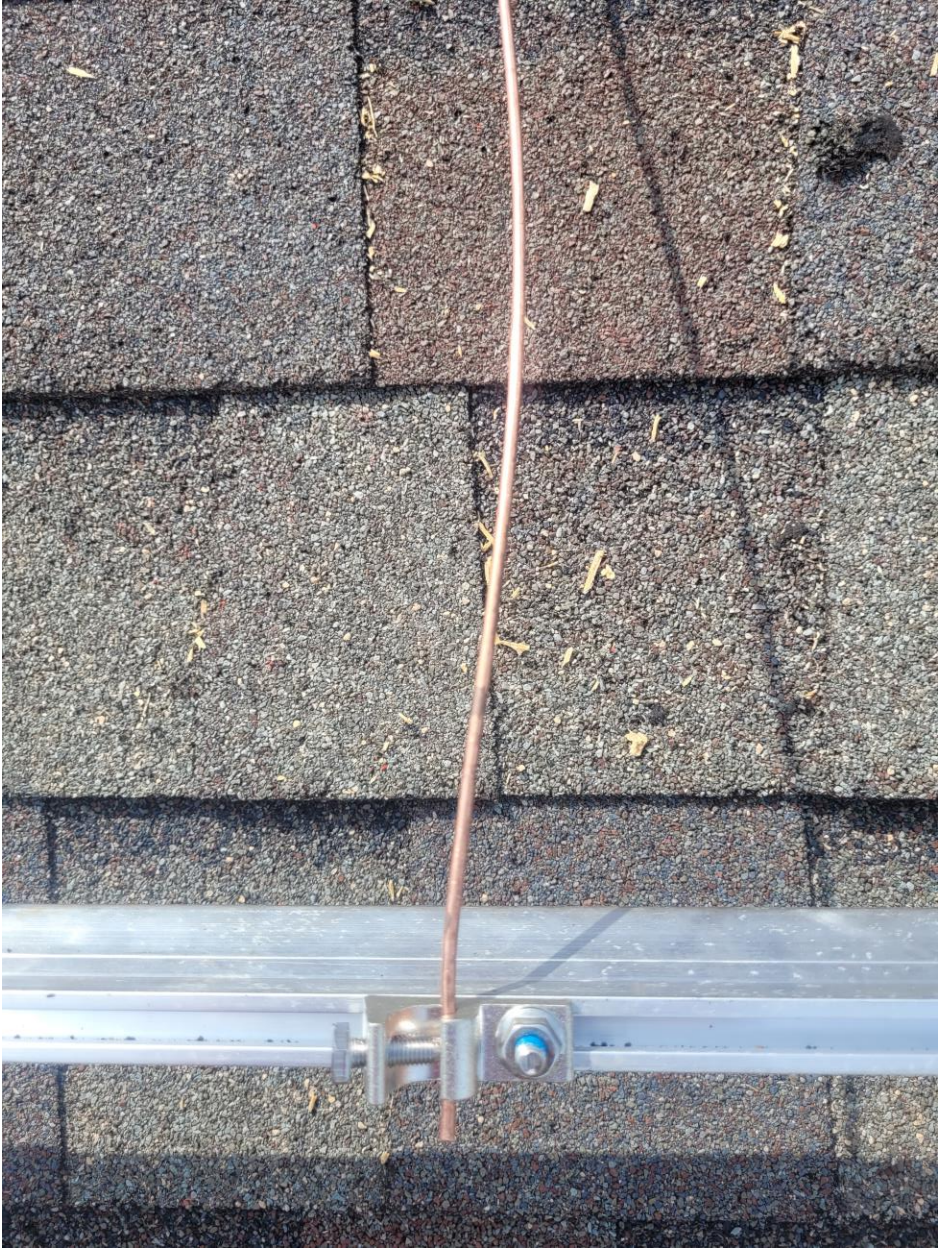


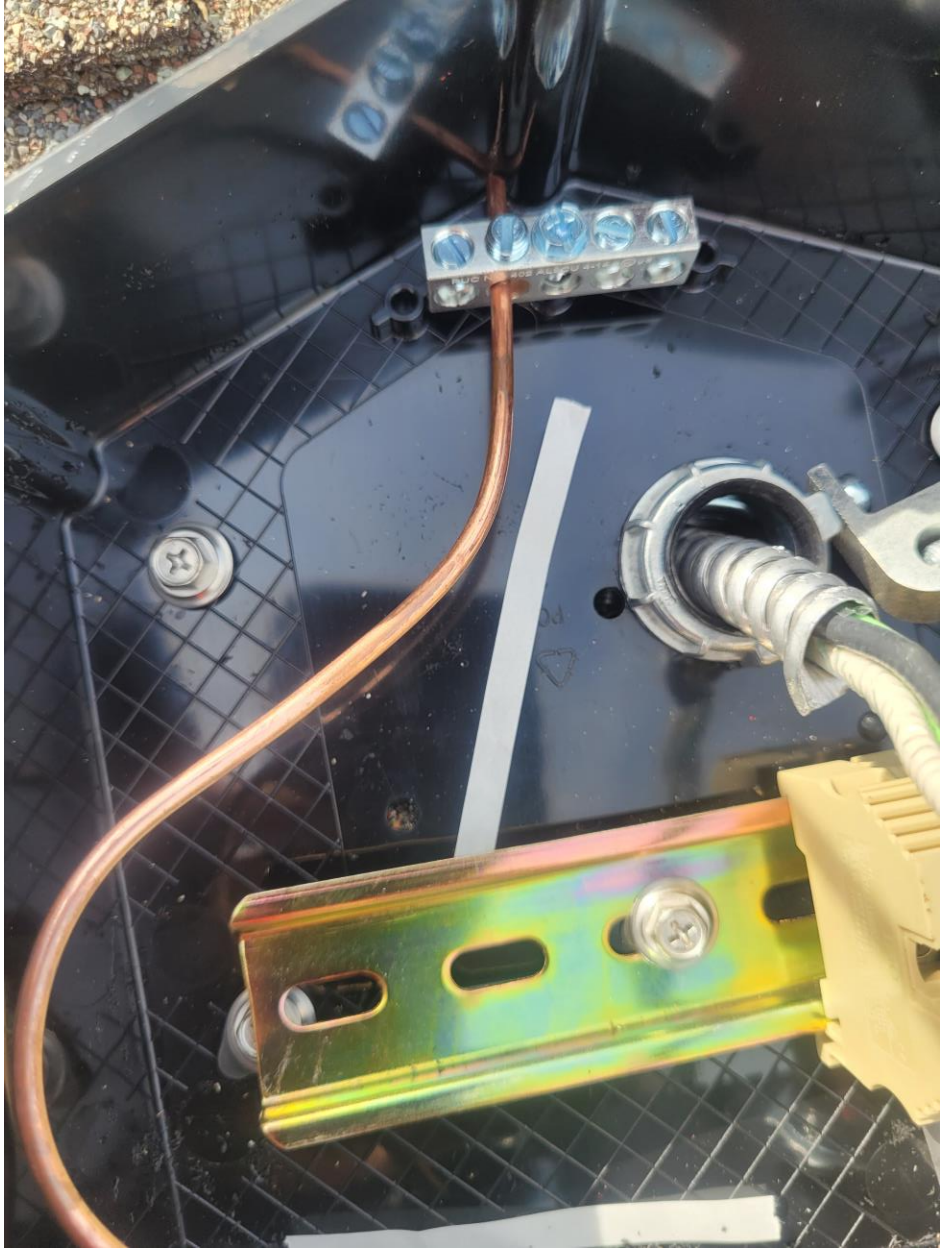


































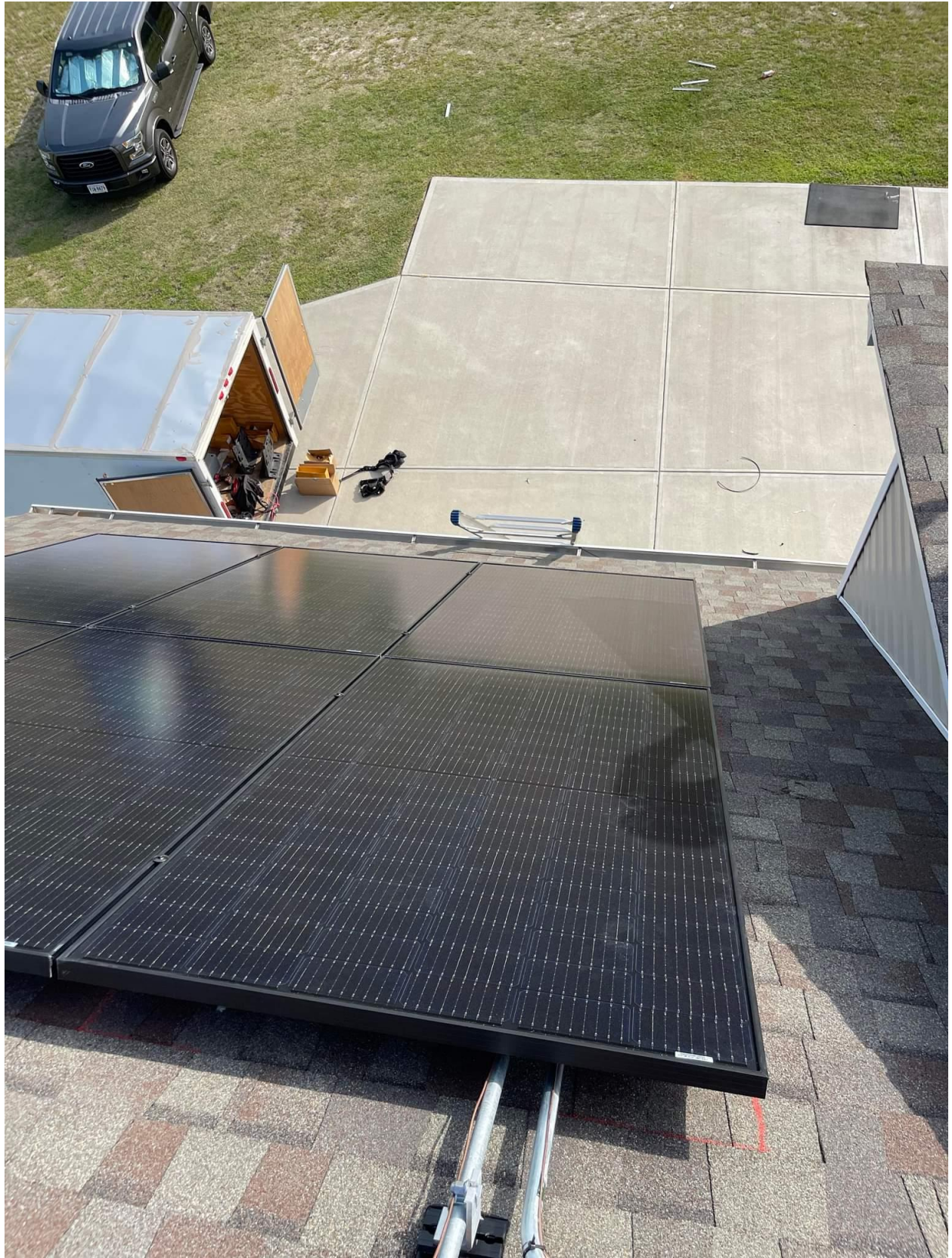














**GENERAL DUTY
SAFETY SWITCH
INTERRUPTOR DE
SEGURIDAD DE
SERVICIO GENERAL**
60 A
240 Vac / V~



⚠ DANGER / PELIGRO
HAZARD OF ELECTRIC SHOCK, EXPLOSION, OR ARC FLASH
PELIGRO DE DESCARGA ELÉCTRICA, EXPLOSIÓN O
DESTELLO POR ARQUEO

- Apply appropriate personal protective equipment (PPE) and follow safe electrical work practices. See NFPA 70E.
- This equipment must only be installed and serviced by qualified electrical personnel.
- Never operate energized switch with door open. Keep door fastened.
- Turn off switch before removing or installing fuses or making load side connections.
- Always use a properly rated voltage sensing device at all line and load fuse clips to confirm switch is off.
- Turn off power supplying switch before doing any other work on or inside switch.
- Do not use renewable link fuses in fused switches.
- Utilice equipo de protección personal (EPP) apropiado y siga las prácticas de seguridad eléctrica establecidas por su Compañía (consulte la norma NFPA 70E).
- Solamente el personal eléctrico especializado deberá instalar y prestar servicio de mantenimiento a este equipo.
- Nunca haga funcionar el interruptor con la puerta abierta cuando esté energizado. Mantenga la puerta asegurada.
- Desenergice el interruptor antes de extraer o instalar fusibles o de hacer conexiones en el lado de carga.
- Siempre utilice un dispositivo de tensión nominal adecuado en los clips para fusibles de los lados de carga y línea para confirmar la desenergización del interruptor.
- Desenergice el interruptor antes de realizar cualquier otro trabajo en el interruptor.
- No utilice fusibles de cinta renovables en

⚠ WARNING
DUAL POWER SUPPLY

SOURCES: UTILITY GRID
AND PV SOLAR
ELECTRIC SYSTEM

**PHOTOVOLTAIC SYSTEM
AC DISCONNECT**

RATED AC OUTPUT CURRENT 15.5 A
NOMINAL OPERATING AC VOLTAGE 240 V

**MAIN PHOTOVOLTAIC
SYSTEM
AC DISCONNECT**

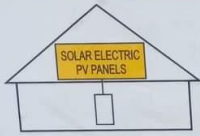
ON

OFF

696-02942



**SOLAR PV SYSTEM
EQUIPPED WITH
RAPID SHUTDOWN**



TURN RAPID SHUTDOWN SWITCH TO
THE "OFF" POSITION TO SHUT DOWN
PV SYSTEM AND REDUCE
SHOCK HAZARD IN THE ARRAY

WARNING
ELECTRIC SHOCK HAZARD
TERMINALS ON THE LINE AND
LOAD SIDES MAY BE ENERGIZED
IN THE OPEN POSITION

solaredge

HD wave

**DIRECT CURRENT
PHOTOVOLTAIC
POWER SOURCE**

MAXIMUM VOLTAGE
480 VDC
MAX CIRCUIT CURRENT
15 AMPS

**RAPID SHUTDOWN
SWITCH FOR
SOLAR PV SYSTEM**



OFF

ON

solar**edge**

DC PHOTOVOLTAIC
SOURCE CIRCUIT

Grid Monitoring Completed. ✕

Pairing Completed. ✕



solaredge

SN 74090556-D8



Status

Inverter

SN 74090556-D8

Summary



Power
460 W



Voltage
245 Vac



Frequency
60 Hz

P_OK: 12 of 12
**Optimizers
Communicating**

Server Comm. i
**No cable
Ethernet**

Status
Production

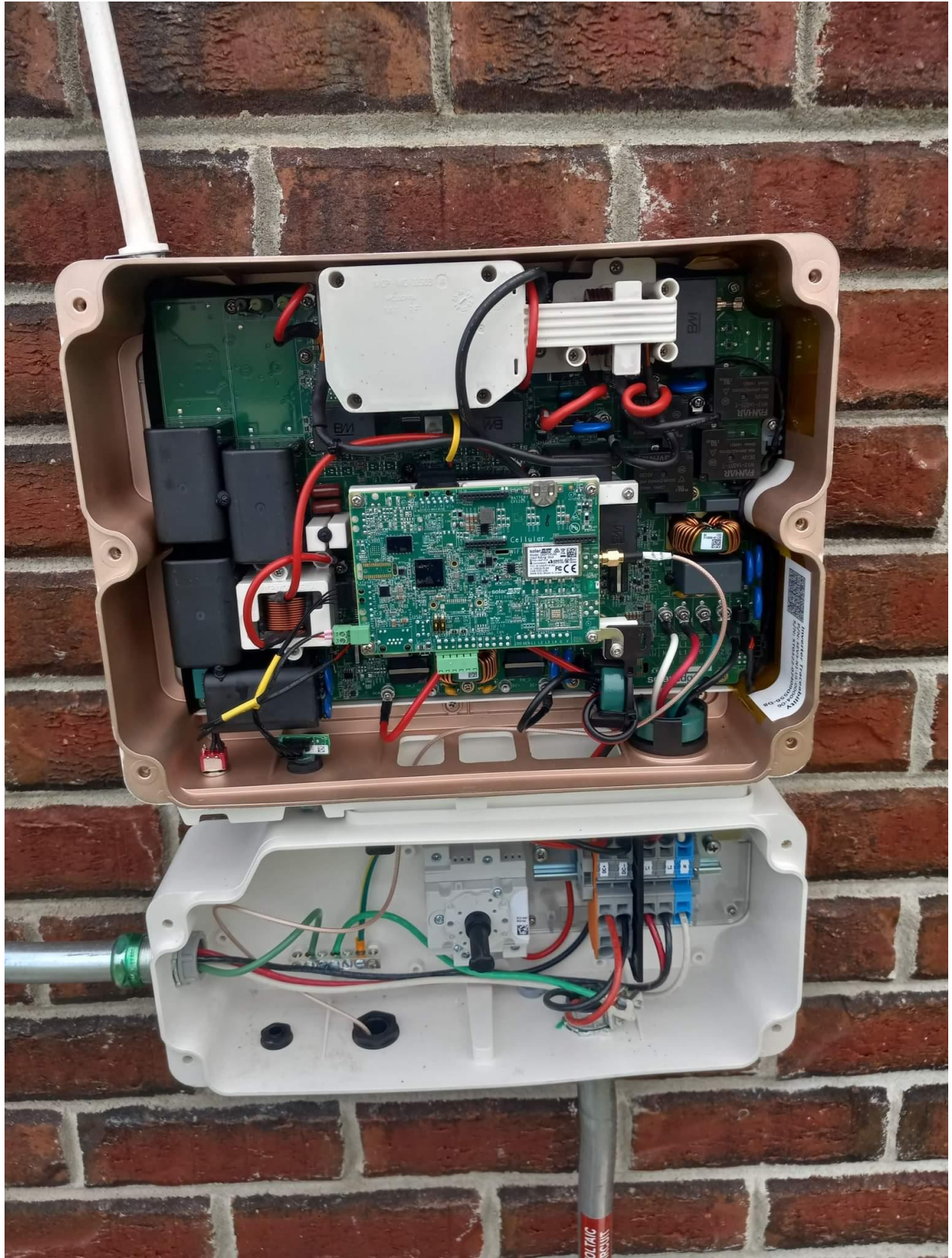
Power Limit
3.3 kW

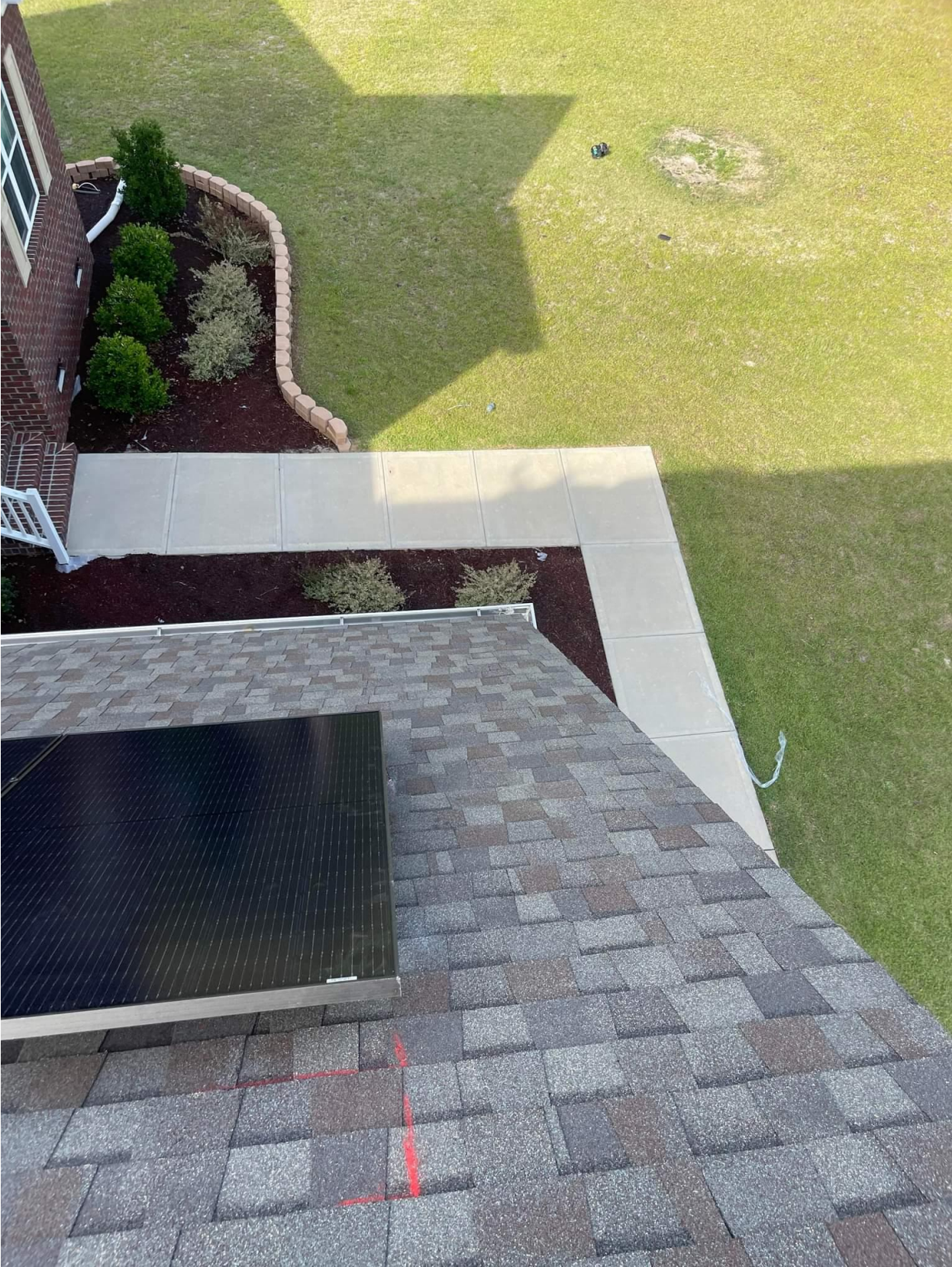
Switch is
On

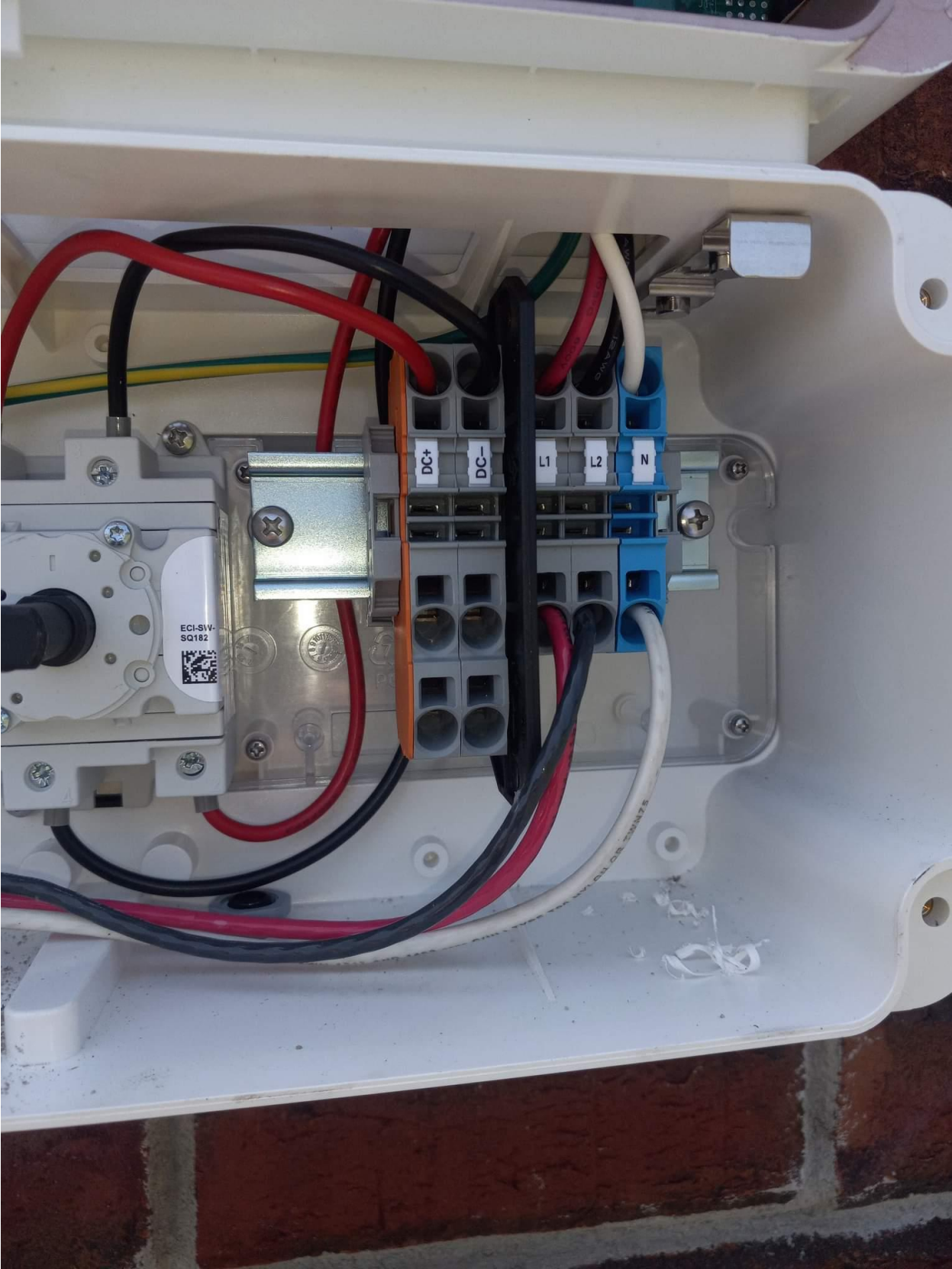
Disconnect from device













12 Sub-Pan
14 upstairs
16 A/C
18
20

PHOTOVOLTAIC SOLAR BREAKER 05-343

PHOTOVOLTAIC SOLAR BREAKER 05-343

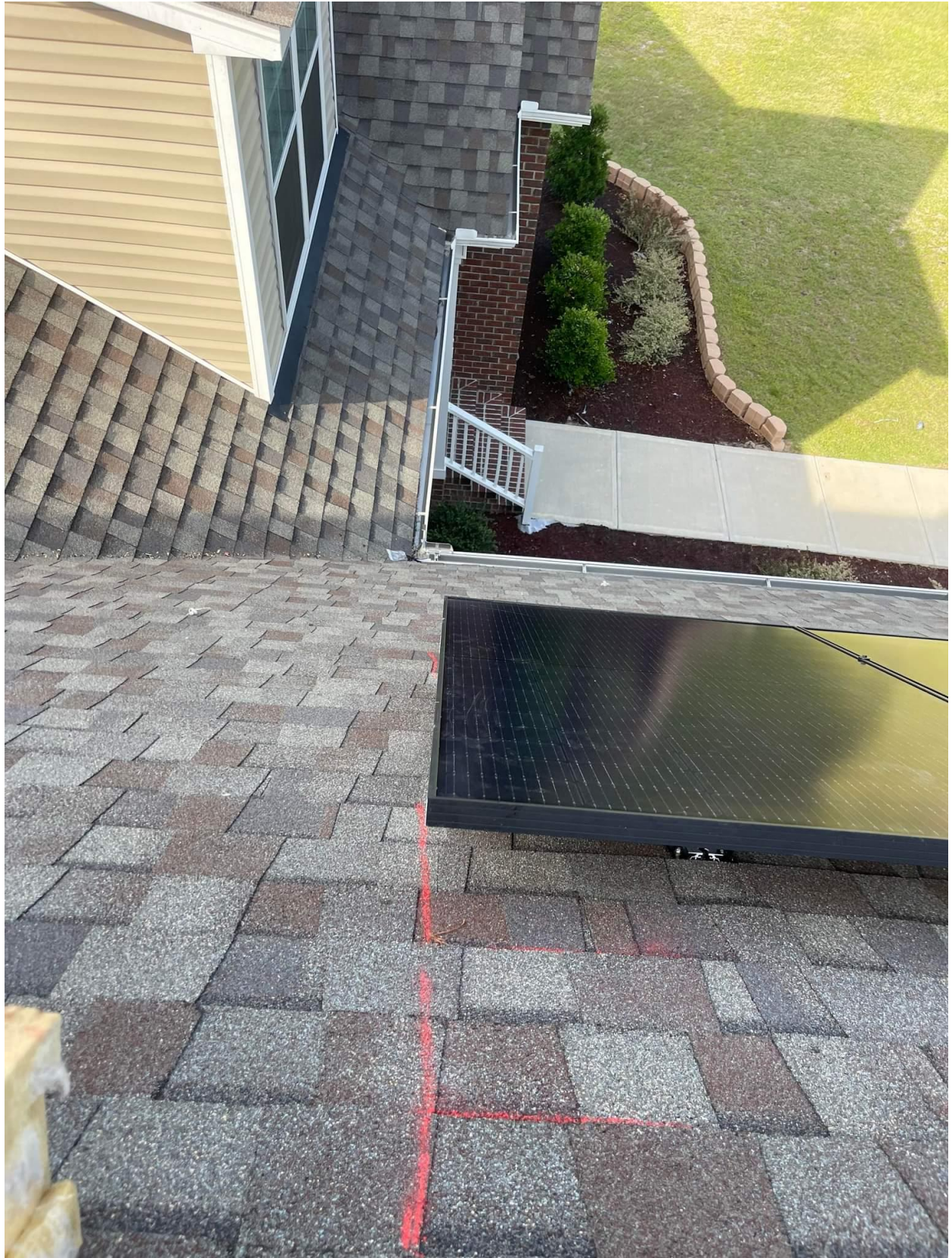
WARNING
SOLAR ELECTRIC
CIRCUIT BREAKER
IS BACKFED 05-342



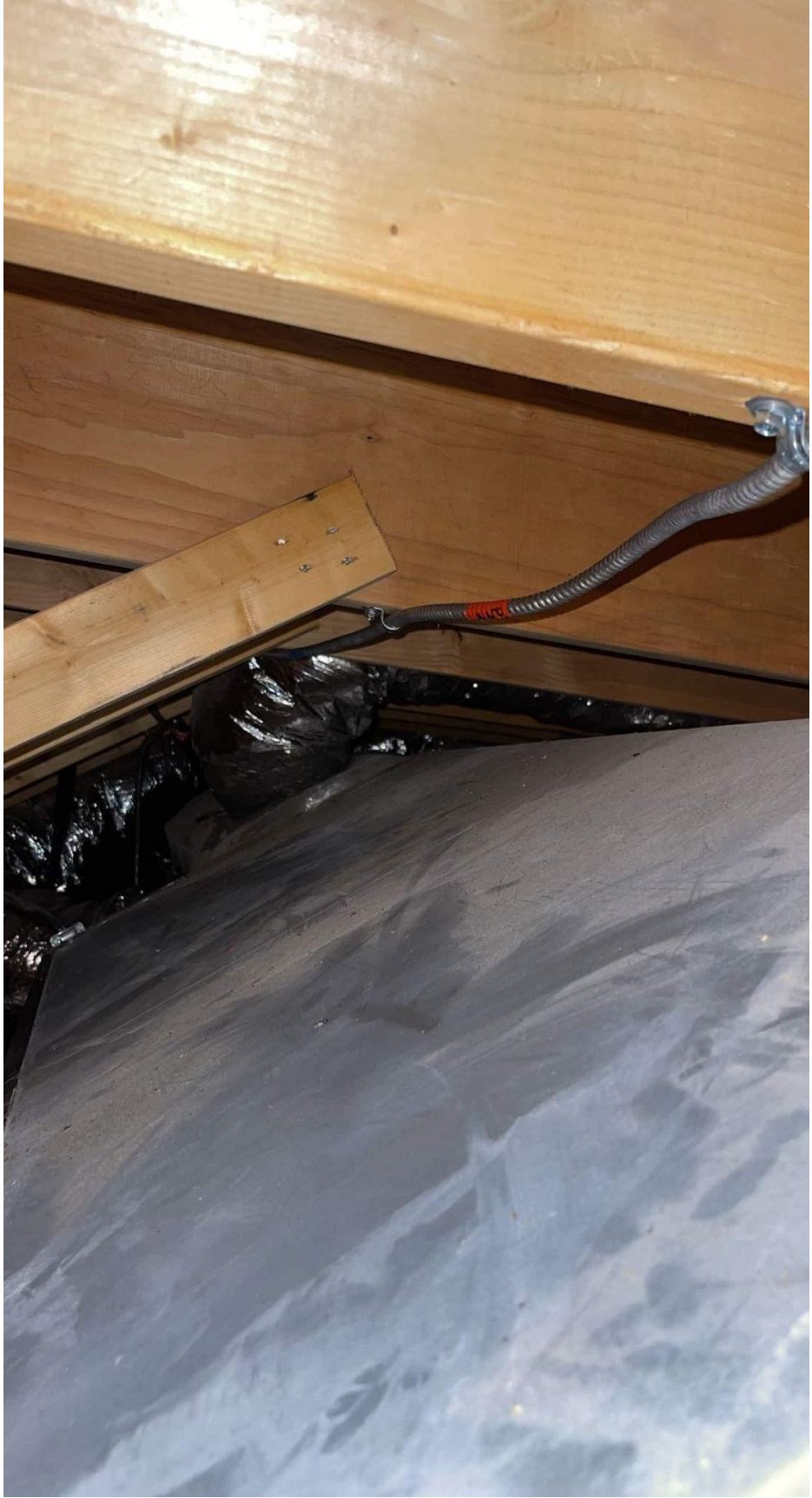


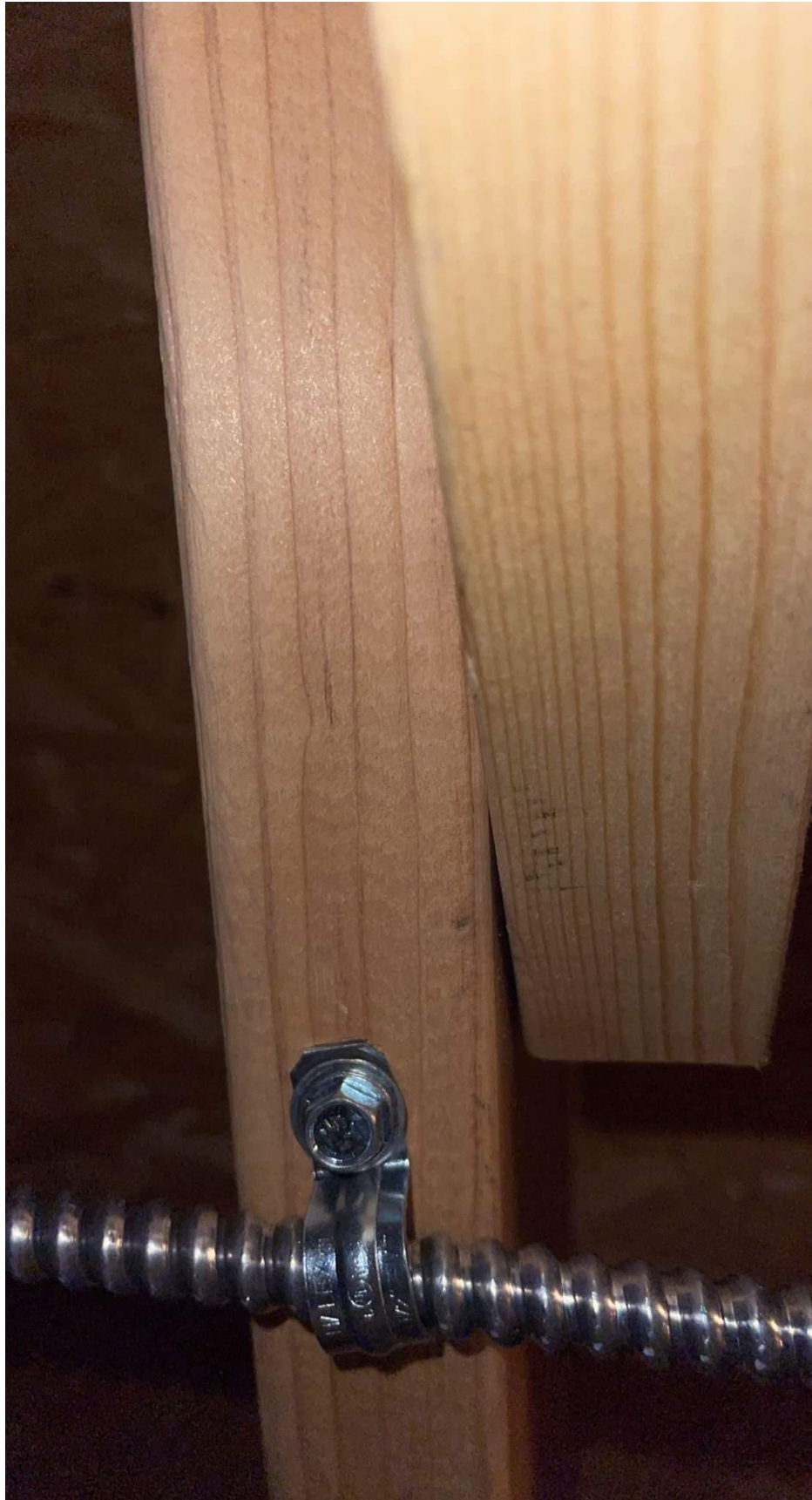


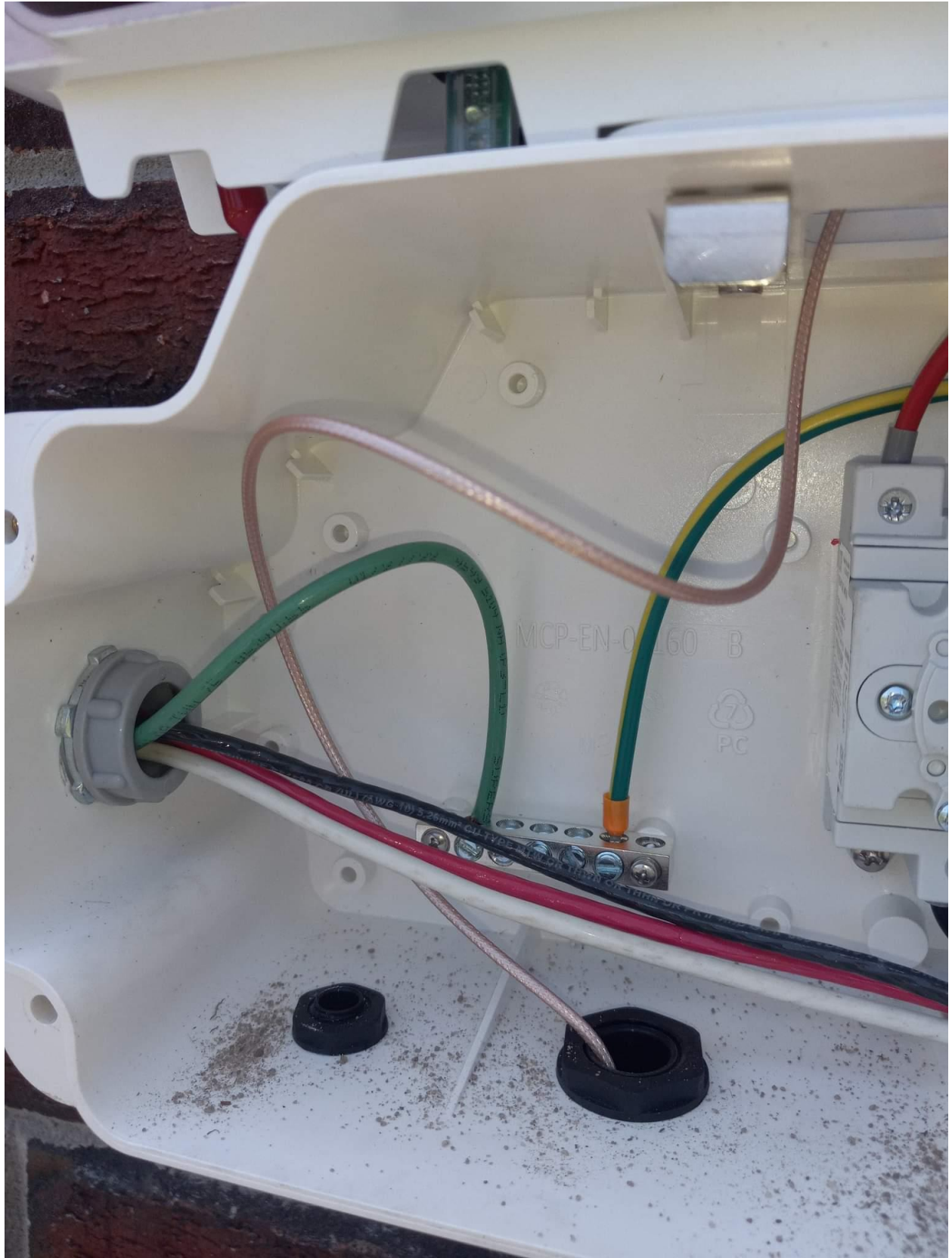
















200A

MAIN

Cook
TOP

Downstairs
A/C

oven
oven

Hot
W/H

UPstairs

Heat

Downstairs

Heat

inside
Sub-Panel

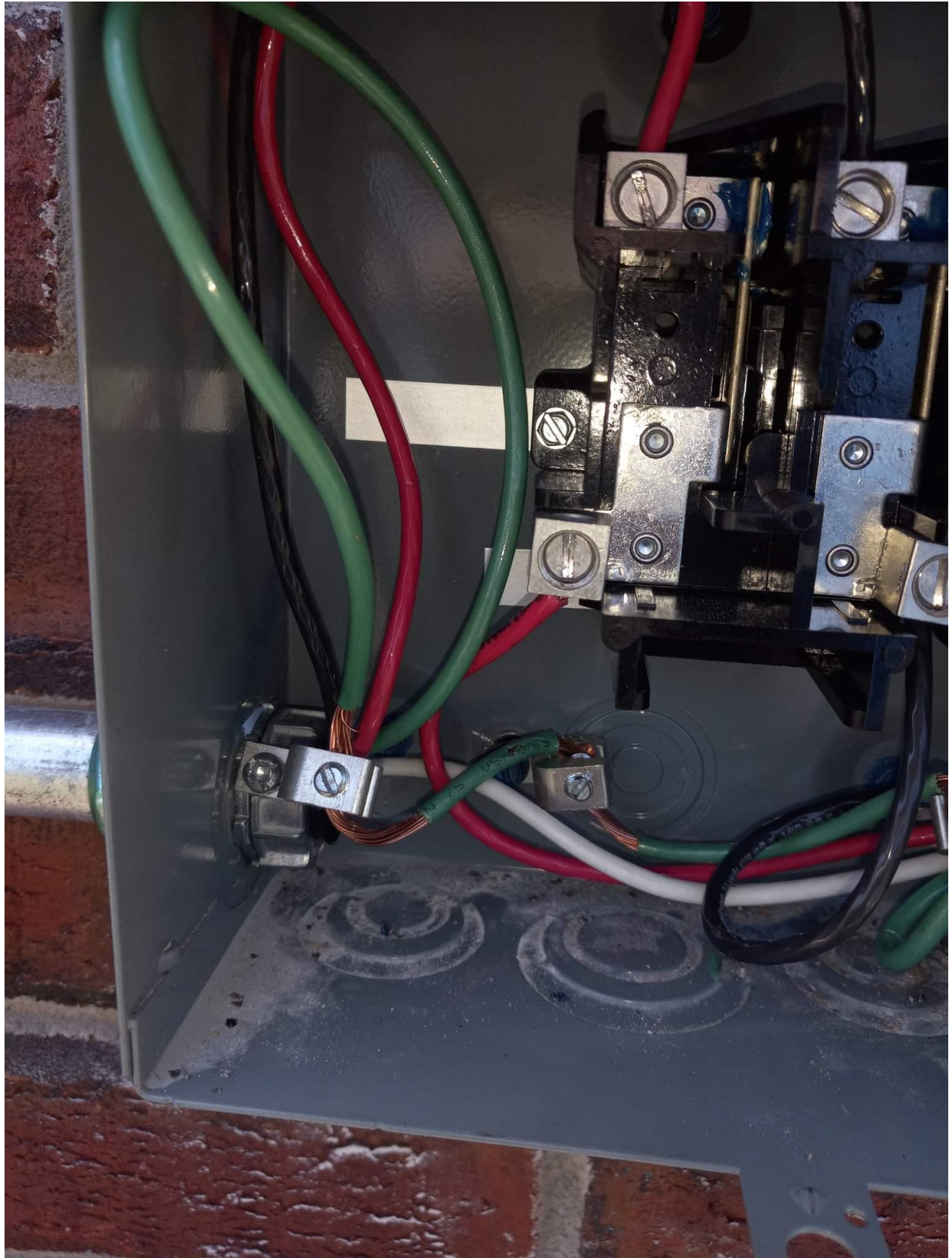
upstairs
A/C

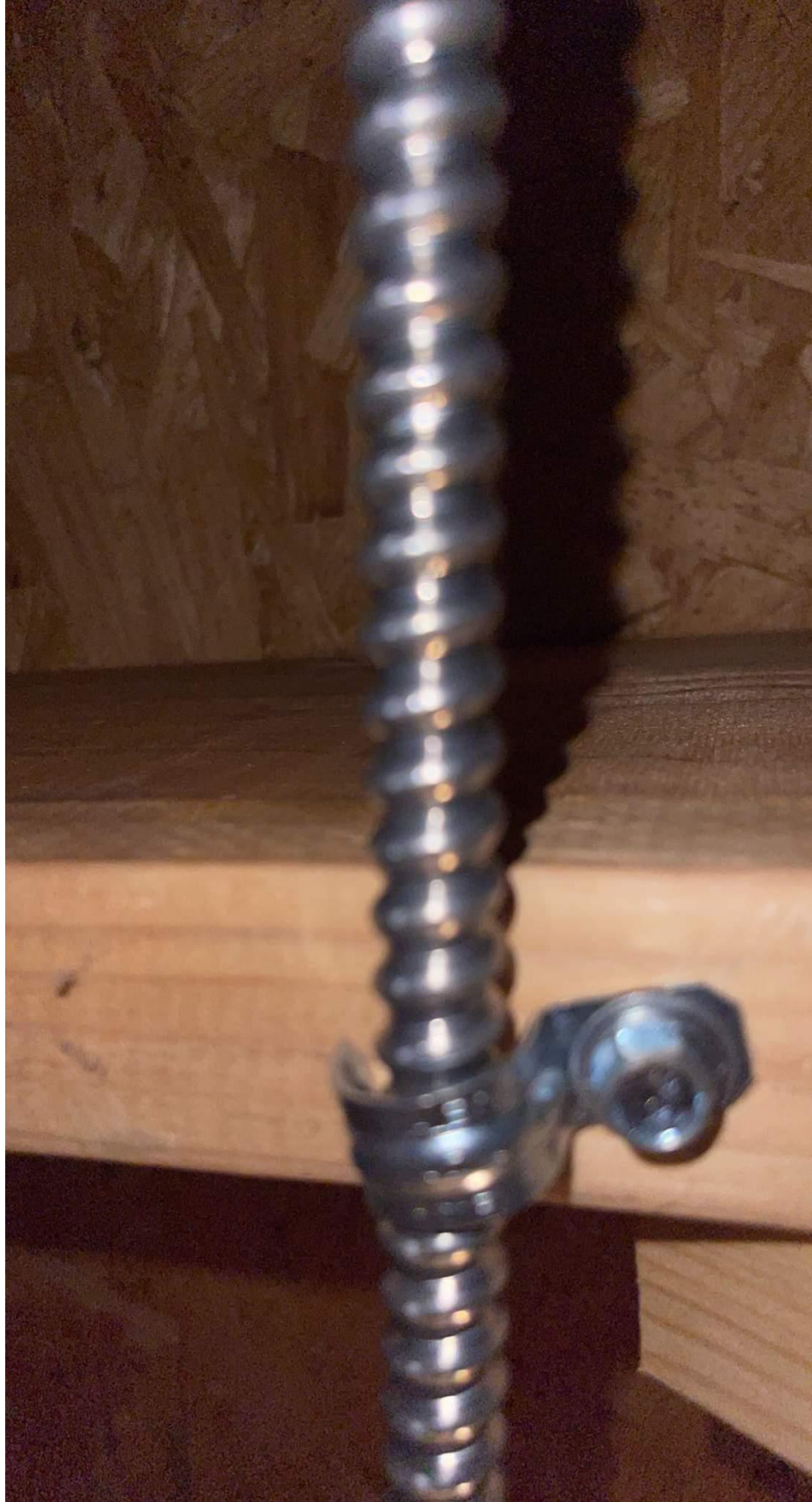
PHOTOVOLTAIC
SOLAR BREAKER

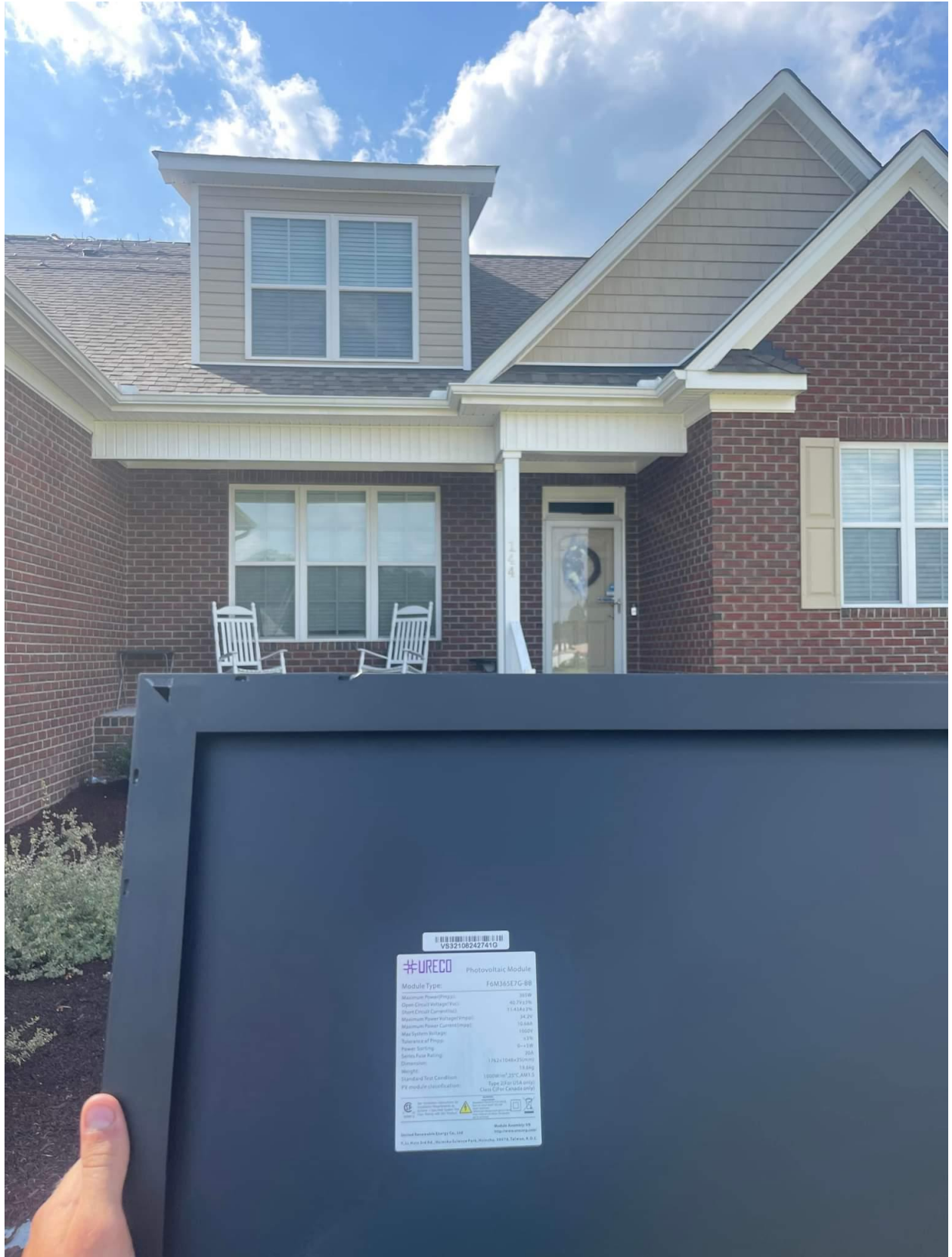
PHOTOVOLTAIC
SOLAR BREAKER

WARNING
SOLAR ELECTRIC
CIRCUIT BREAKER
IS BACKFED









VB321002427410

WRECO Photovoltaic Module

Module Type: T6M3657G-88

Maximum Power (P _{max})	300W
Open Circuit Voltage (V _{oc})	40.79V (1%)
Short Circuit Current (I _{sc})	7.14A (2.7%)
Maximum Power Voltage (V _{mp})	34.2V
Maximum Power Current (I _{mp})	8.8A
Max System Voltage	1000V
Temperature of P-n	1.1%
Power Factor	0.98
Series Fuse Rating	20A
Dimensions	1192x1366x30mm
Weight	18.0kg
Standard Test Condition	1000W/m ² , 25°C, AM1.5
IEC module classification	Type 2 (20A USA only) Class 2 (20A Canada only)

Module Assembly 08
http://www.wreco.com

© 2018 WRECO Energy Co., Ltd.
WRECO Energy Co., Ltd. Shenzhen Science Park, Huihua, 518118, Shenzhen, P.R. China



Jerome Bass 4.38 kw



d

N



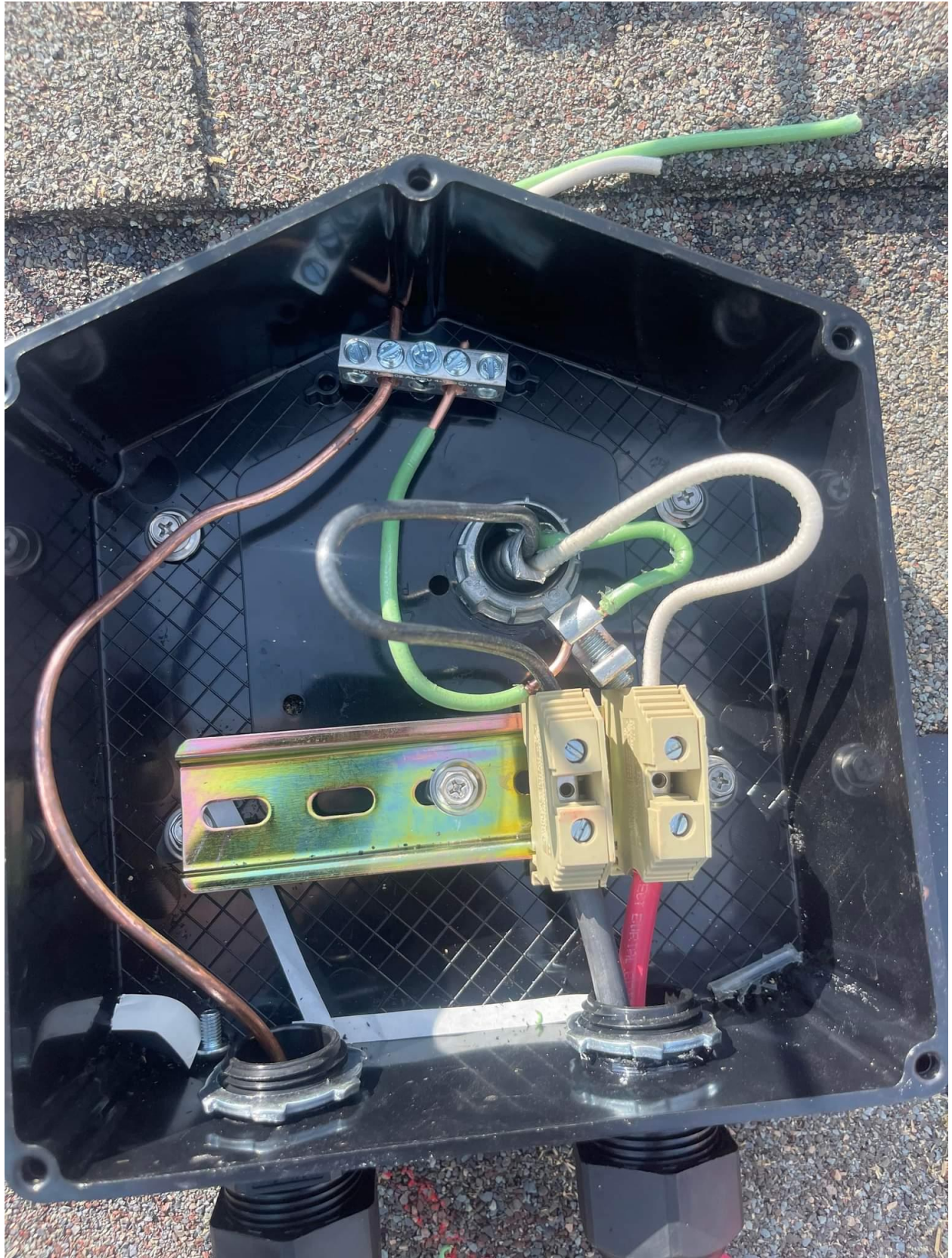
S-12



N



P





KOBALT

40A 400A

Temp °C°F

Ω CAP

V~

V~ Hz



OFF

NCV

AUTO POWER OFF

DT-9180D

12.20 V

RANGE

MODE

MAX MIN

AC TRMS CLAMP METER

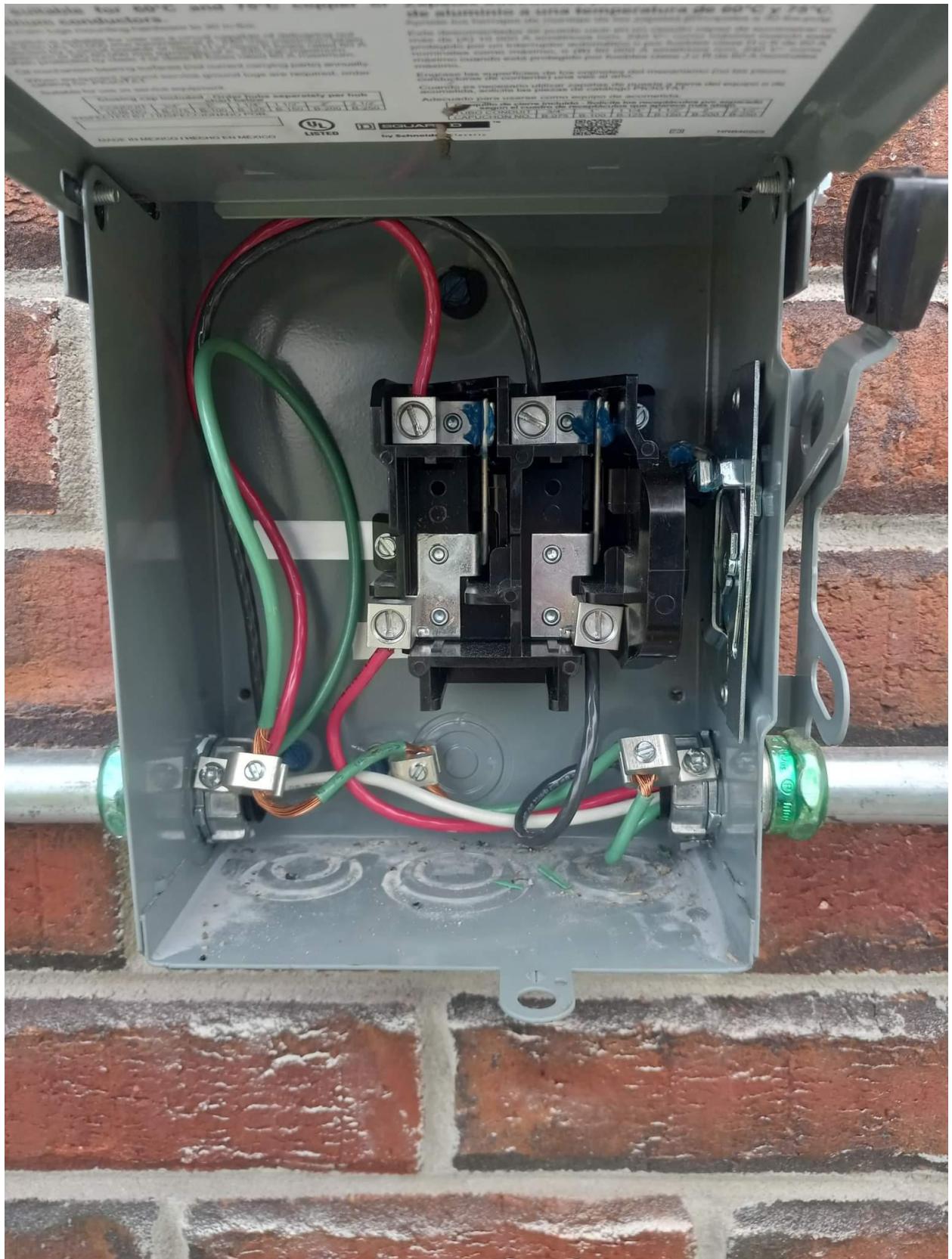


CAT III 600V

COM

V Ω CAP
← → Hz Temp



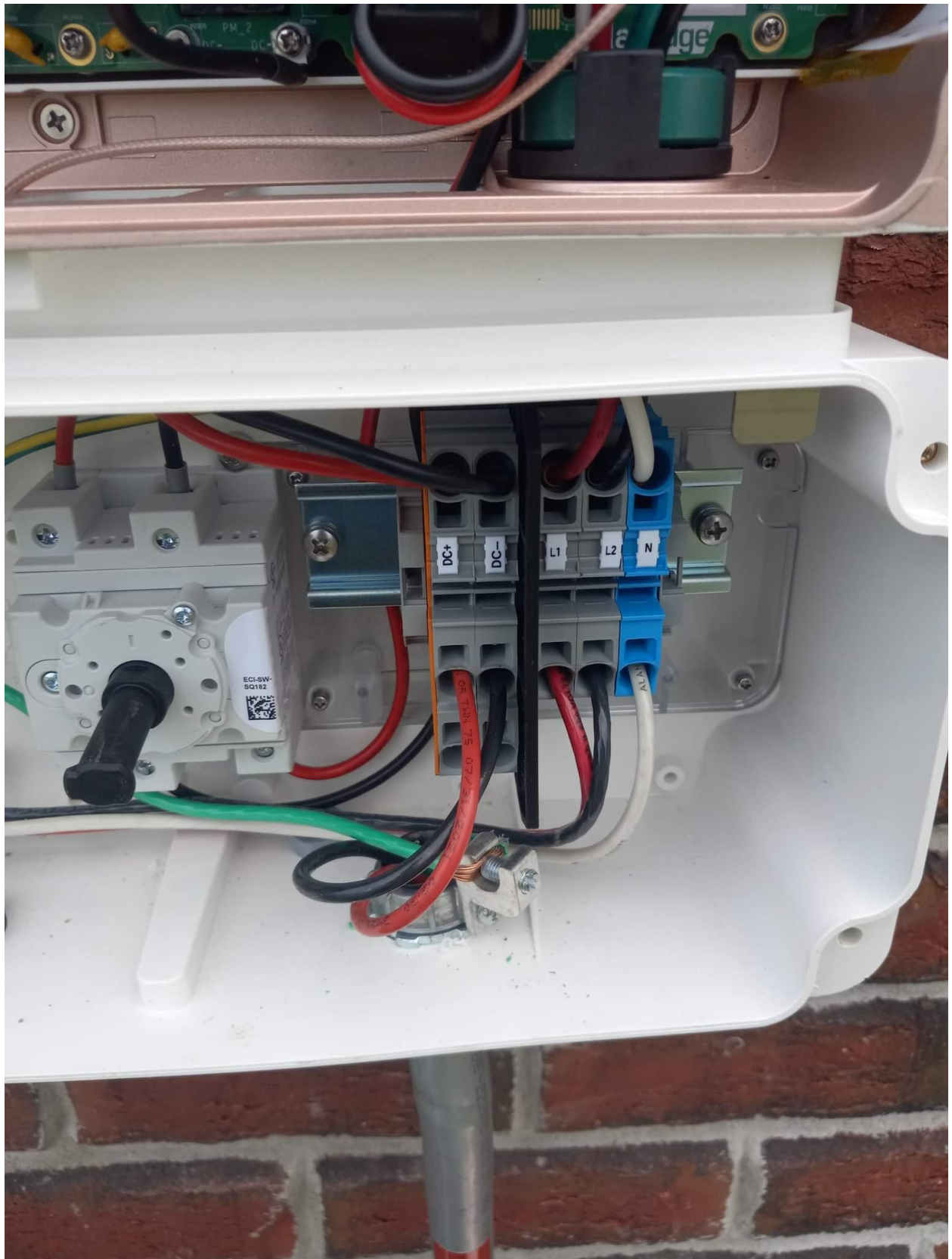




EZ SOLAR

JB-1.2

jerome bass 4.38kw
144 brower rd cameron nc
dc junction box









⚠ WARNING
THIS SERVICE METER
IS ALSO SERVED BY A
PHOTOVOLTAIC SYSTEM

⚠ DANGER
Hazardous Voltage.
Will cause death, serious injury
or substantial property damage.
Turn off power supplying this
equipment before working inside.



⚠ PELIGRO
Voltaje peligroso. Causará la
muerte, lesiones graves o daño
substantial a la propiedad.
Desconecte el suministro de energía a este
equipo antes de trabajar en su interior.

CONTAINS FCC ID: R1PES1R156 CONTAINS IC: 5254A-EG15156
Landis+Gyr **GRIDSTREAM RF**
90B28E07
MFG: L & MFG: L
GE Integrated FOCUS 8.0x **Digitel**
certified product

Type **FOCUS AXRe-SD**
FORM 25 CL200 240V 3W 60Hz TA=30 Kh

CENTRAL EMC

165 691 530
934
0221
Landis+Gyr

REMOVE THIS DECAL
RETOIRER CETTE ÉTIQUETTE
TIRAR LA PEGATINA

SHOCK HAZARD
JUMPER CONNECTIONS
SOURCE(S) IS ENERGIZED

⚠ ADVERTENCIA

LE RISQUE D'ÉLECTROCUTION
DE MISE À LA TERRE OU LA COUVERTURE
EST ENLEVÉ LORSQUE L'ALIMENTATION
EST ENCLÉBÉE.

EXISTE PELIGRO DE DESCARGA EL CONDUCTOR
FUENTE DE CONEXIÓN DE ESTE EQUIPO SE RETIRA
FUENTES ALTERNATIVA.

PHOTOVOLTAIC SYSTEM
MATRICE DE SECOURS
CARADOR DE RESERVA

LOCATION:
EMPLACEMENT:

UBICACIÓN:

North West
South East
North East
South West

