









VS32108242741G



Photovoltaic Module

Module Type:	F6M365E7G-BB
Maximum Power(Pmpp):	365W
Open Circuit Voltage(Voc):	40.7V±3%
Short Circuit Current(Isc):	11.43A±3%
Maximum Power Voltage(Vmpp):	34.2V
Maximum Power Current(Imp):	10.68A
Max System Voltage:	1000V
Tolerance of Pmpp:	±3%
Power Sorting:	0~+5W
Series Fuse Rating:	20A
Dimension:	1762×1048×35(mm)
Weight:	19.6kg
Standard Test Condition:	1000W/m <sup>2</sup> ,25°C,AM1.5
PV module classification:	Type 2(For USA only) Class C(For Canada only)



See installation instructions for  
Installation Requirements to  
Achieve a Specified System Fire  
Class Rating with this Product.



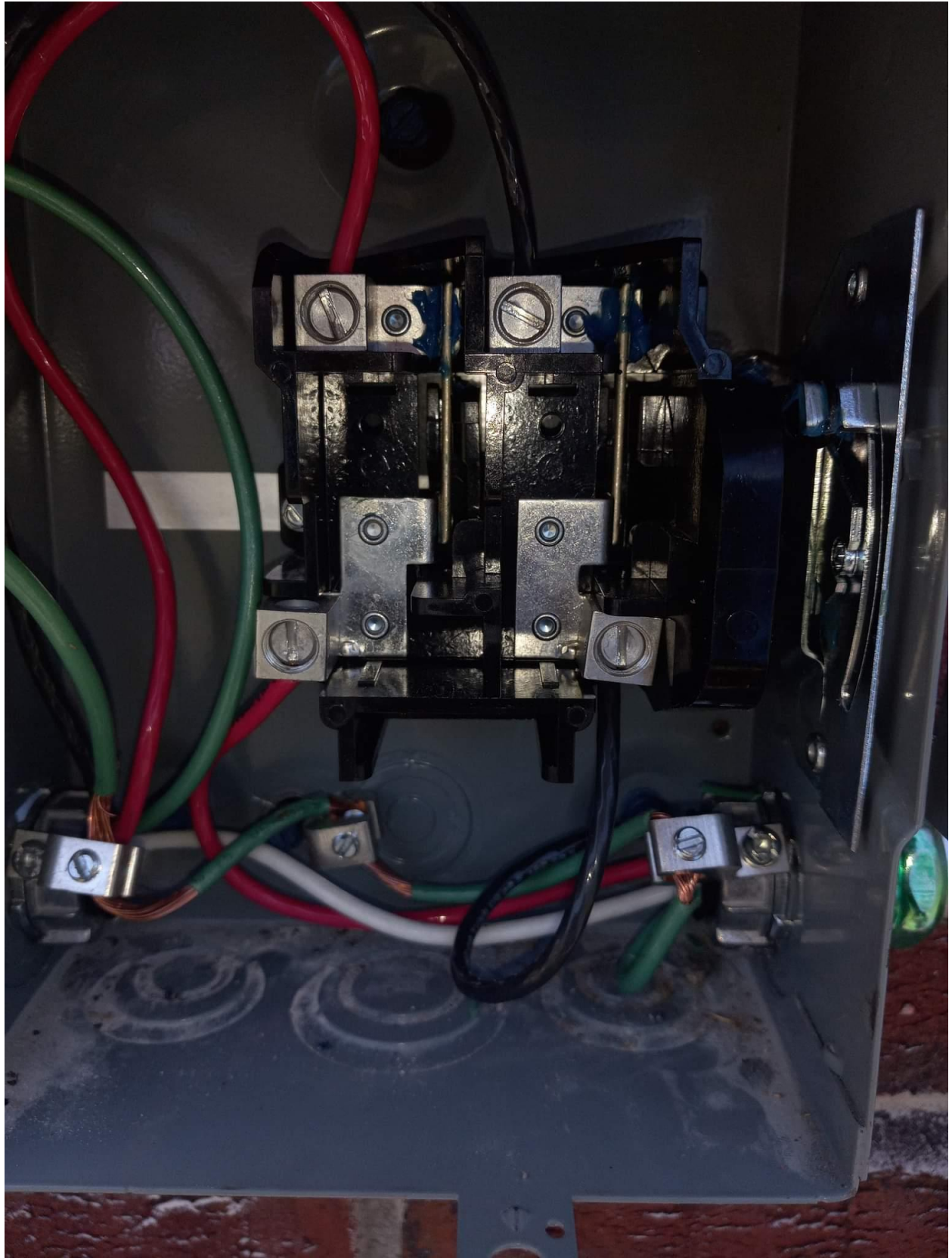
**WARNING**  
Hazardous Electricity Can shock,  
burn or cause death. Do not  
touch terminals.  
L'électricité dangereuse peut le faire  
Choc électrique ou électrocution. Ne touchez  
pas le terminal.



United Renewable Energy Co., Ltd

7, Li-Hsin 3rd Rd., Hsinchu Science Park, Hsinchu, 30078, Taiwan, R.O.C

Module Assembly: VN  
<http://www.urecorp.com/>













VS32108241387G



### Photovoltaic Module

Module Type:	F6M365E7G-BB
Maximum Power(Pmpp):	365W
Open Circuit Voltage(Voc):	40.7V±3%
Short Circuit Current(Isc):	11.43A±3%
Maximum Power Voltage(Vmpp):	34.2V
Maximum Power Current(Imp):	10.68A
Max System Voltage:	1000V
Tolerance of Pmpp:	±3%
Power Sorting:	0~+5W
Series Fuse Rating:	20A
Dimension:	1762×1048×35(mm)
Weight:	19.6kg
Standard Test Condition:	1000W/m <sup>2</sup> , 25°C, AM1.5
PV module classification:	Type 2(For USA only) Class C(For Canada only)



See installation instructions for  
Installation Requirements to  
Achieve a Specified System Fire  
Class Rating with this Product



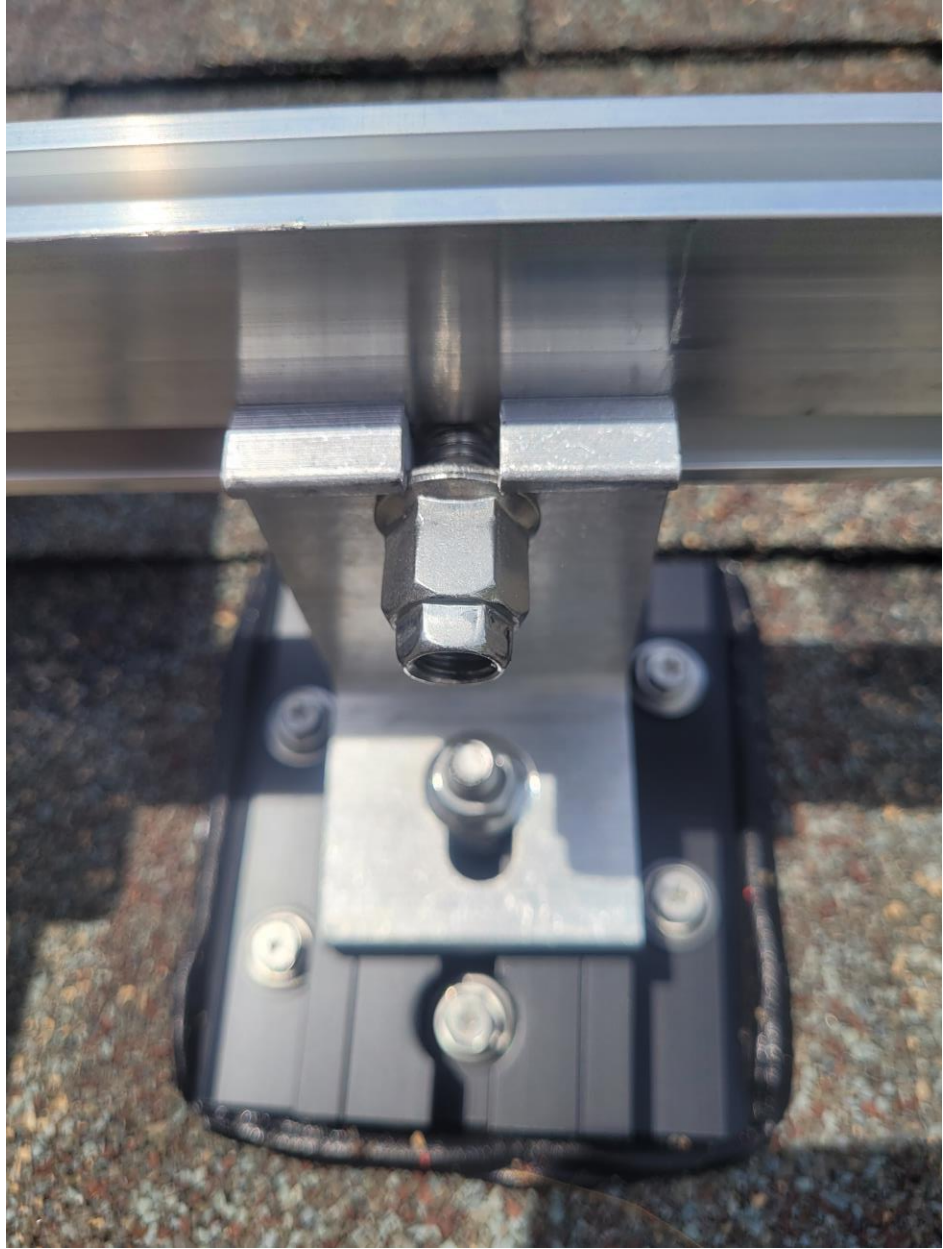
**WARNING**  
Hazardous Electricity Can shock,  
burn or cause death. Do not  
touch terminals.  
L'électricité dangereuse peut le faire  
Choc brûlures ou décès. Ne touchez  
pas le terminal.



United Renewable Energy Co., Ltd

Module Assembly: VN  
<http://www.urecorp.com/>

7, Li-Hsin 3rd Rd., Hsinchu Science Park, Hsinchu, 30078, Taiwan, R.O.C







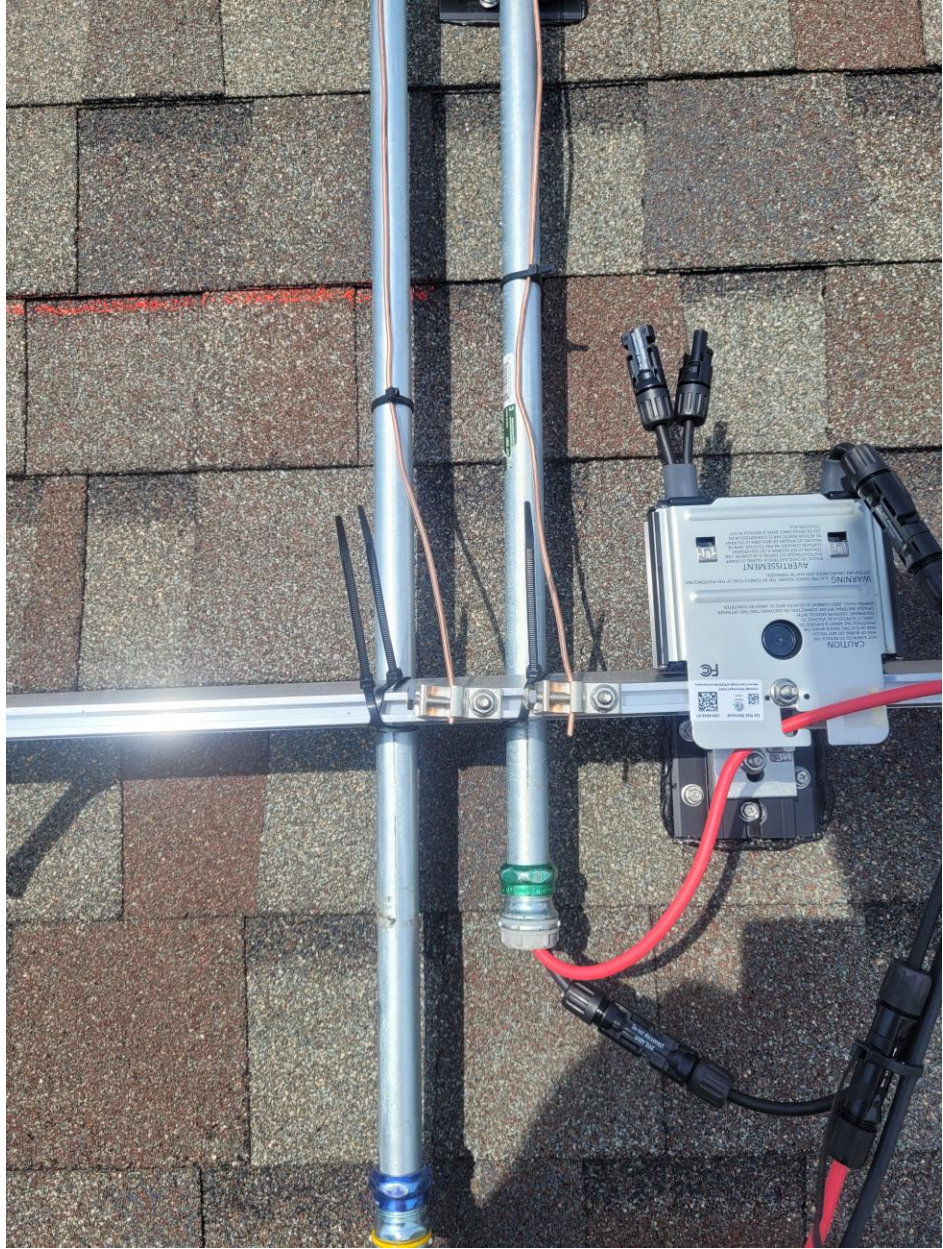




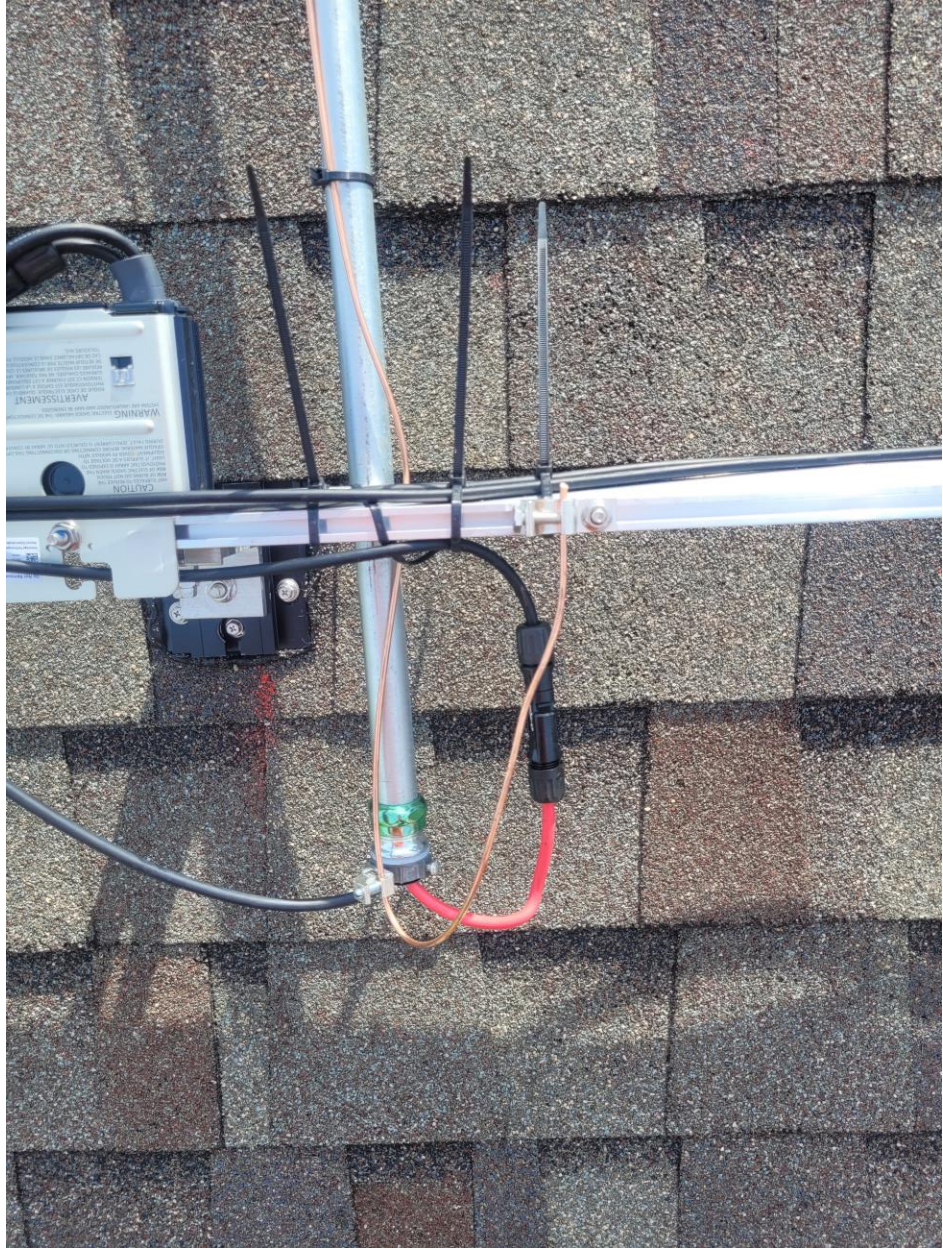




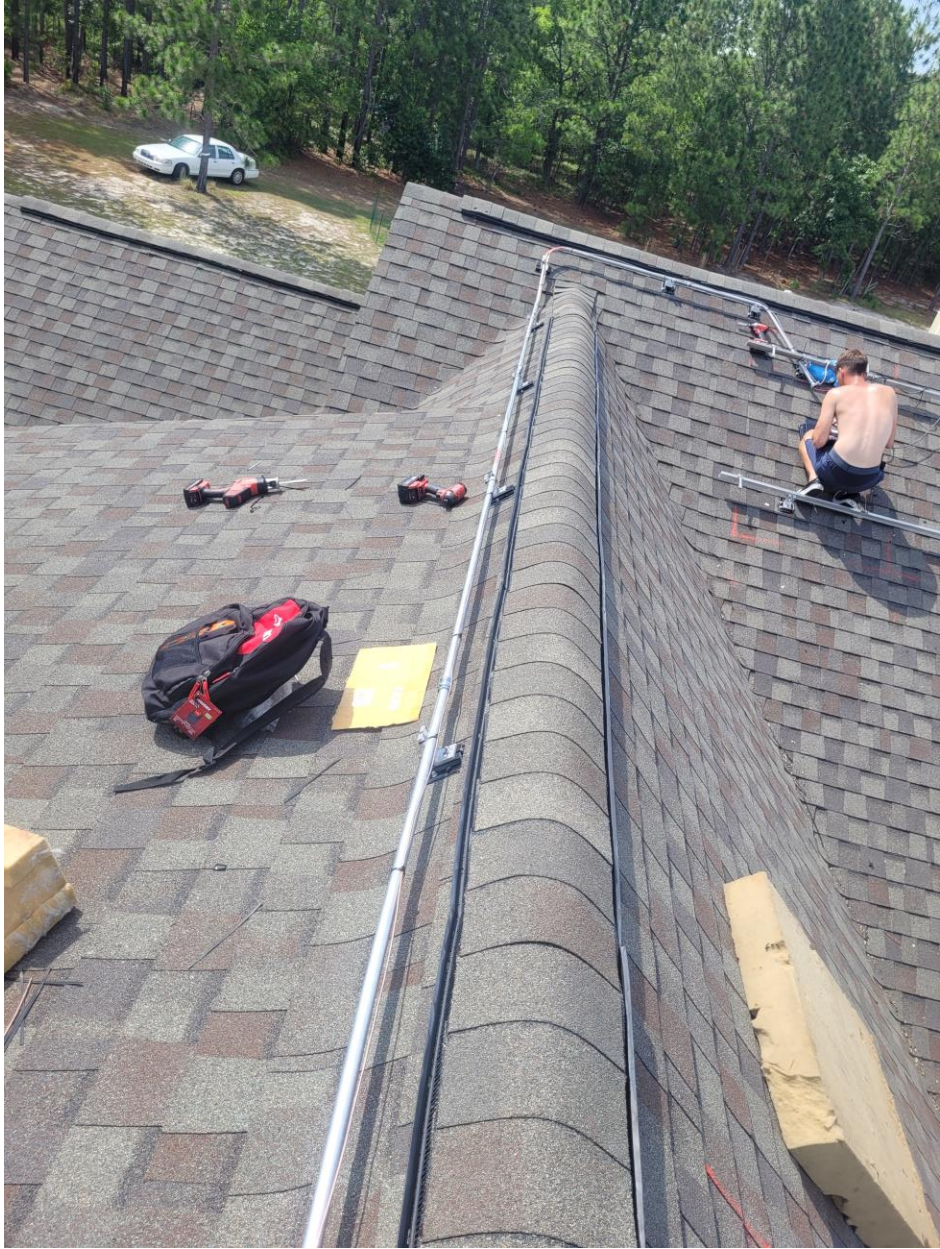




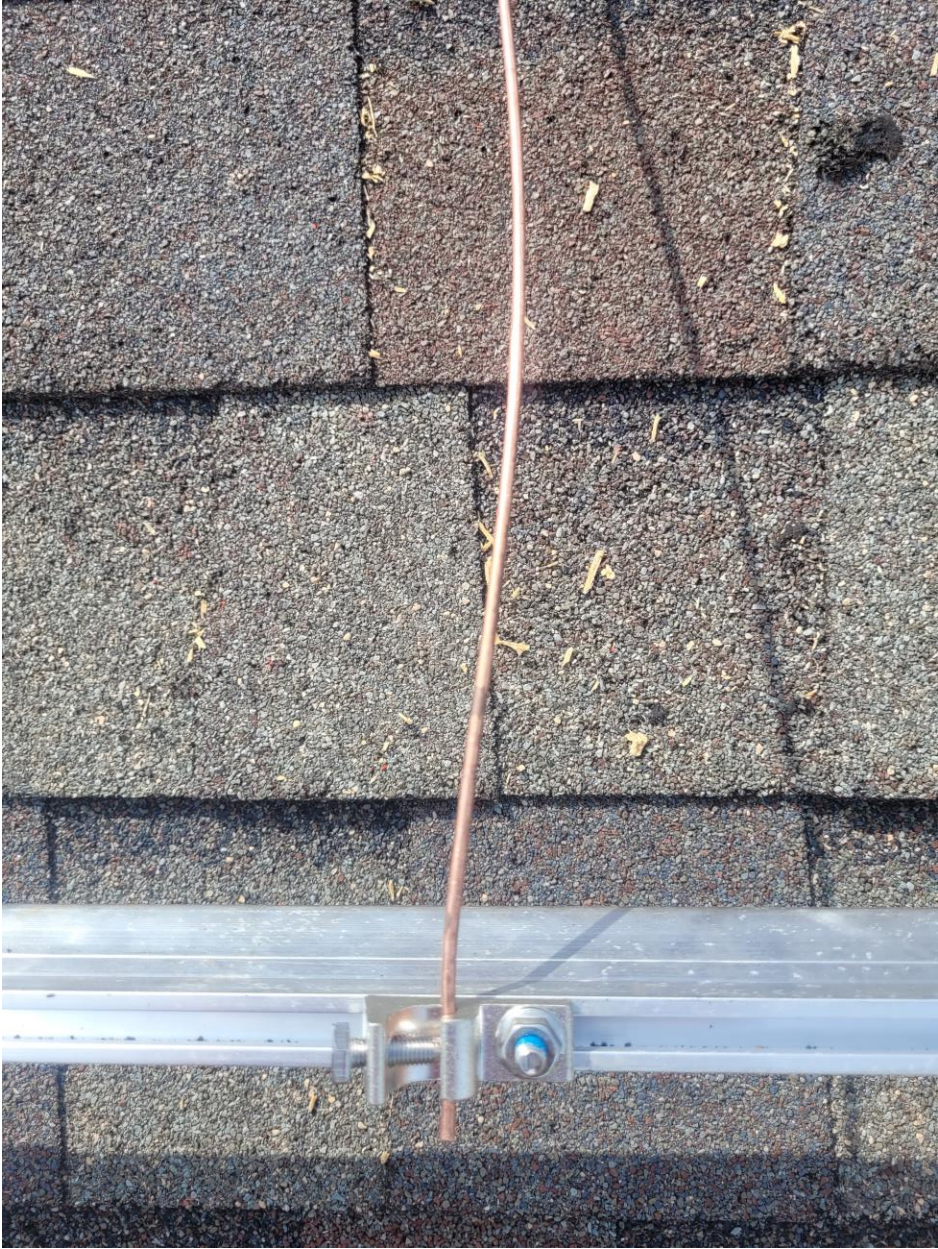


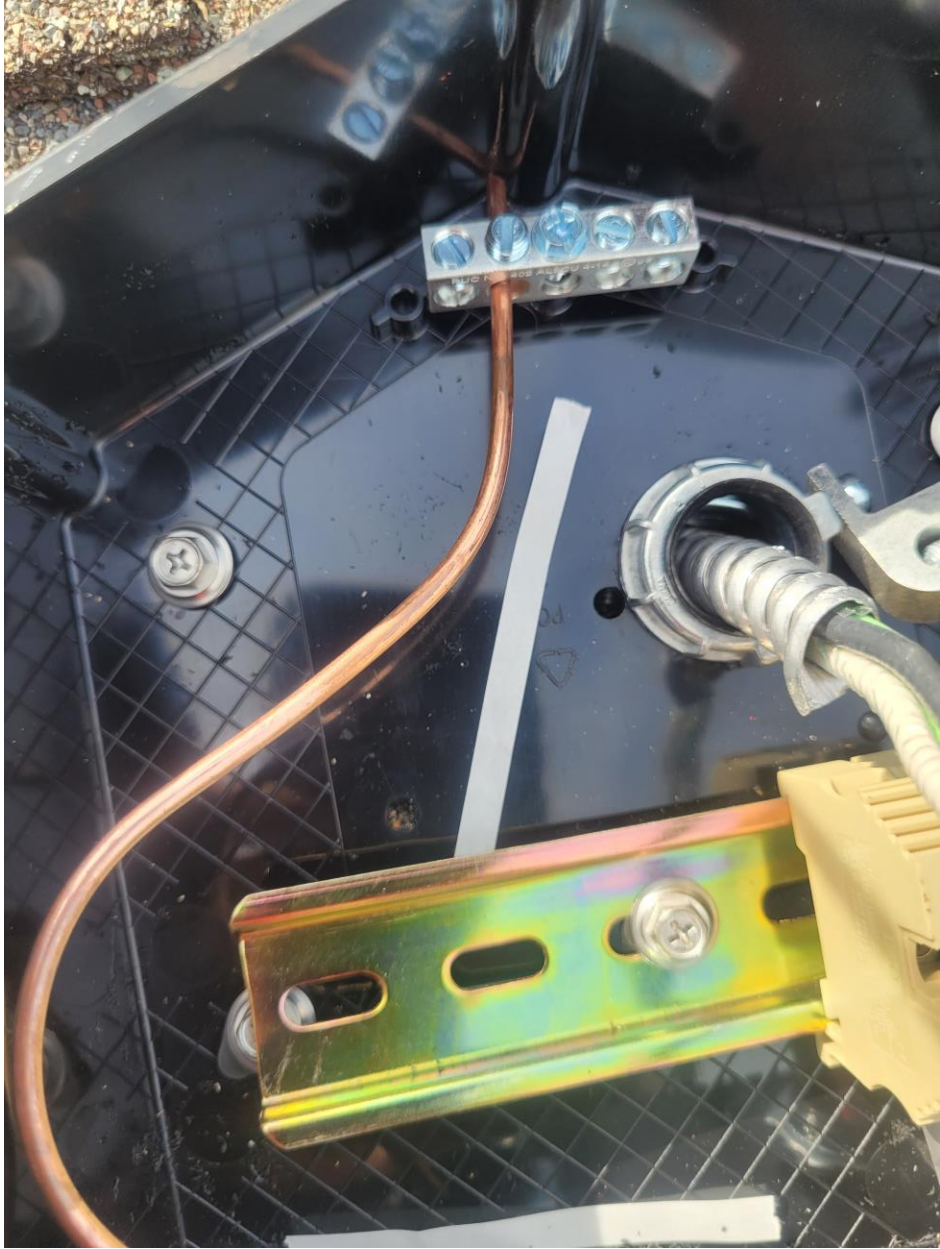










































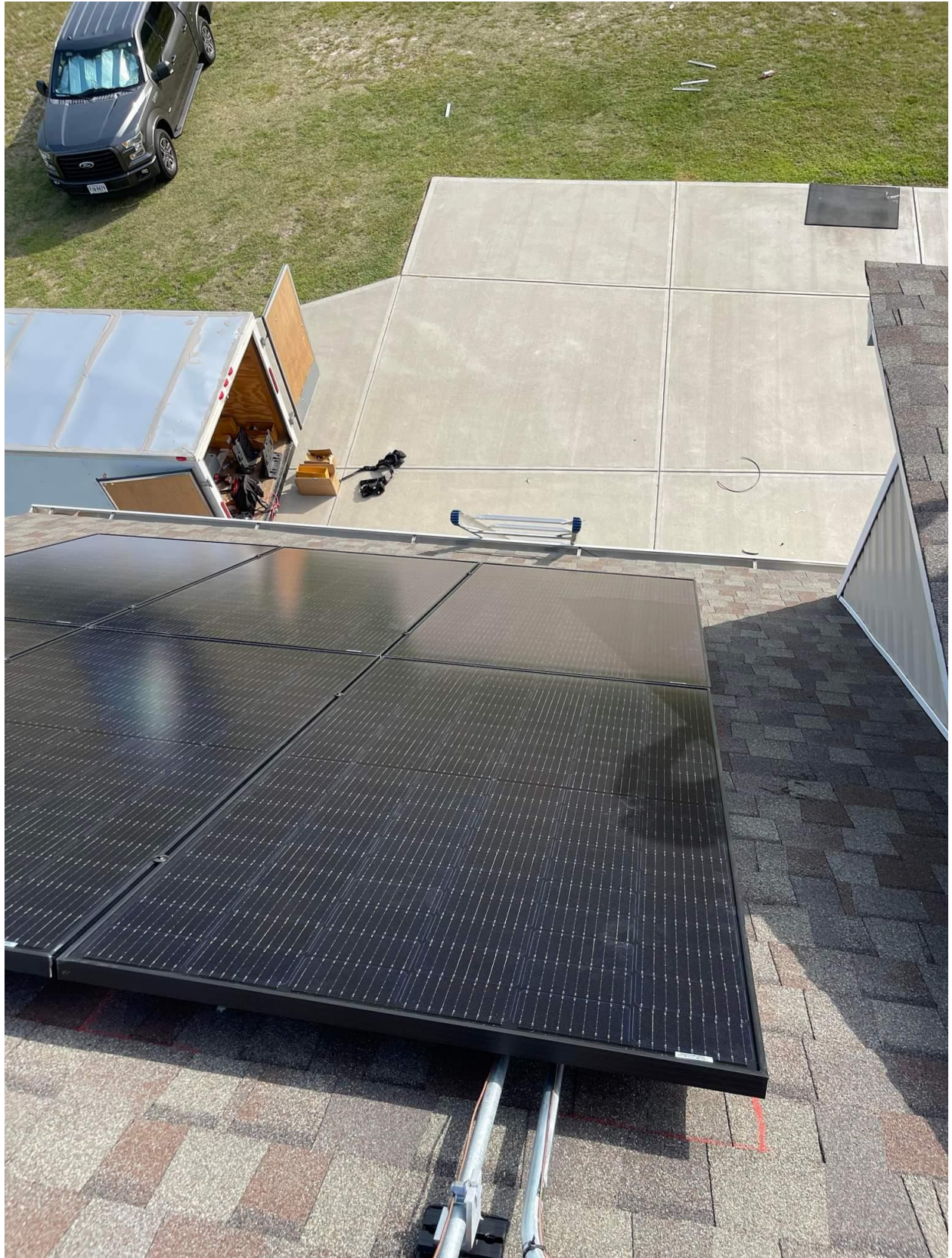














**GENERAL DUTY  
SAFETY SWITCH  
INTERRUPTOR DE  
SEGURIDAD DE  
SERVICIO GENERAL**  
60 A  
240 Vac / V~



**⚠ DANGER / PELIGRO**  
HAZARD OF ELECTRIC SHOCK, EXPLOSION, OR ARC FLASH  
PELIGRO DE DESCARGA ELÉCTRICA, EXPLOSIÓN O  
DESTELLO POR ARQUEO

- Apply appropriate personal protective equipment (PPE) and follow safe electrical work practices. See NFPA 70E.
- This equipment must only be installed and serviced by qualified electrical personnel.
- Never operate energized switch with door open. Keep door fastened.
- Turn off switch before removing or installing fuses or making load side connections.
- Always use a properly rated voltage sensing device at all line and load fuse clips to confirm switch is off.
- Turn off power supplying switch before doing any other work on or inside switch.
- Do not use renewable link fuses in fused switches.
- Utilice equipo de protección personal (EPP) apropiado y siga las prácticas de seguridad eléctrica establecidas por su Compañía (consulte la norma NFPA 70E).
- Solamente el personal eléctrico especializado deberá instalar y prestar servicio de mantenimiento a este equipo.
- Nunca haga funcionar el interruptor con la puerta abierta cuando esté energizado. Mantenga la puerta asegurada.
- Desenergice el interruptor antes de extraer o instalar fusibles o de hacer conexiones en el lado de carga.
- Siempre utilice un dispositivo de tensión nominal adecuado en los clips para fusibles de los lados de carga y línea para confirmar la desenergización del interruptor.
- Desenergice el interruptor antes de realizar cualquier otro trabajo en el interruptor.
- No utilice fusibles de cinta renovables en

**⚠ WARNING**  
DUAL POWER SUPPLY

SOURCES: UTILITY GRID  
AND PV SOLAR  
ELECTRIC SYSTEM

**⚠ PHOTOVOLTAIC SYSTEM  
AC DISCONNECT ⚠**

RATED AC OUTPUT CURRENT 15.5 A  
NOMINAL OPERATING AC VOLTAGE 240 V

**MAIN PHOTOVOLTAIC  
SYSTEM  
AC DISCONNECT**

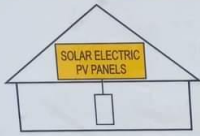
696-02942

ON  
I

OFF



**SOLAR PV SYSTEM  
EQUIPPED WITH  
RAPID SHUTDOWN**



TURN RAPID SHUTDOWN SWITCH TO  
THE "OFF" POSITION TO SHUT DOWN  
PV SYSTEM AND REDUCE  
SHOCK HAZARD IN THE ARRAY

**WARNING**  
ELECTRIC SHOCK HAZARD  
TERMINALS ON THE LINE AND  
LOAD SIDES MAY BE ENERGIZED  
IN THE OPEN POSITION

**DIRECT CURRENT  
PHOTOVOLTAIC  
POWER SOURCE**  
  
MAXIMUM VOLTAGE  
480 VDC  
MAX CIRCUIT CURRENT  
15 AMPS

**solar**edge

**HD** wave

**RAPID SHUTDOWN  
SWITCH FOR  
SOLAR PV SYSTEM**

solar**edge**

**DC PHOTOVOLTAIC  
SOURCE CIRCUIT**



Grid Monitoring Completed. ✕

Pairing Completed. ✕



**solar**edge

SN 74090556-D8



### Status

## Inverter

SN 74090556-D8

### Summary



Power  
**460 W**



Voltage  
**245 Vac**



Frequency  
**60 Hz**

P\_OK: 12 of 12  
**Optimizers  
Communicating**

Server Comm. i  
**No cable  
Ethernet**

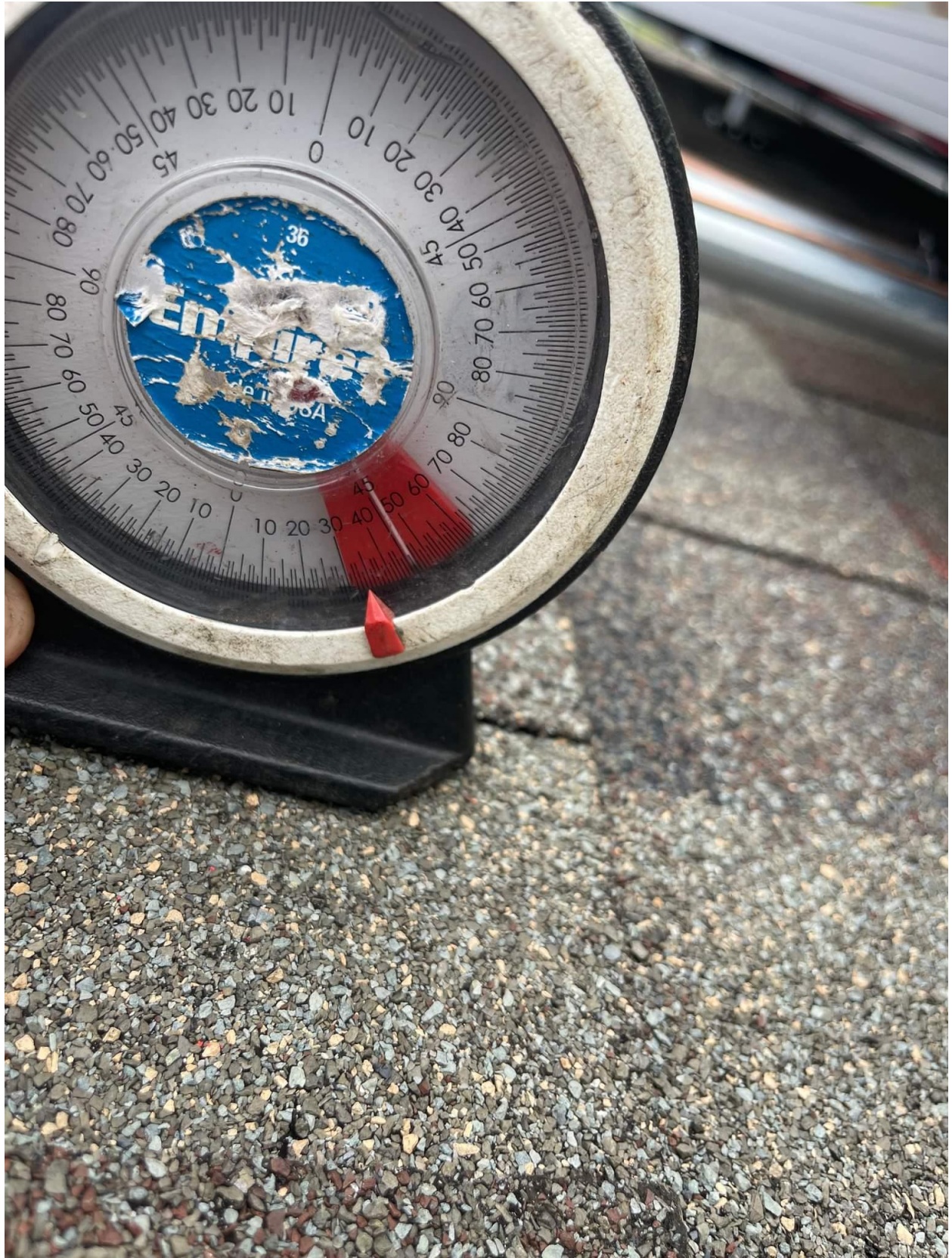
Status  
**Production**

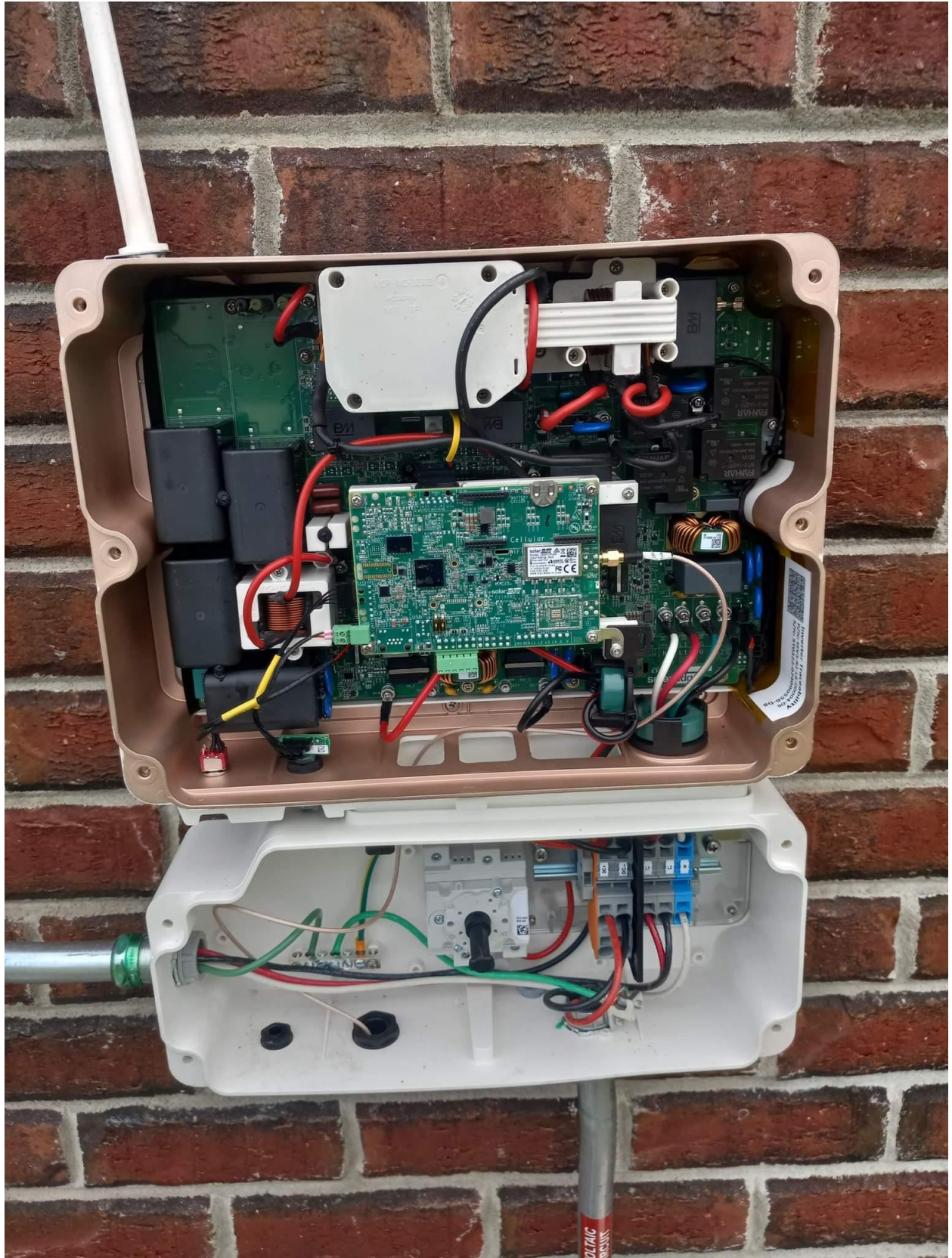
Power Limit  
**3.3 kW**

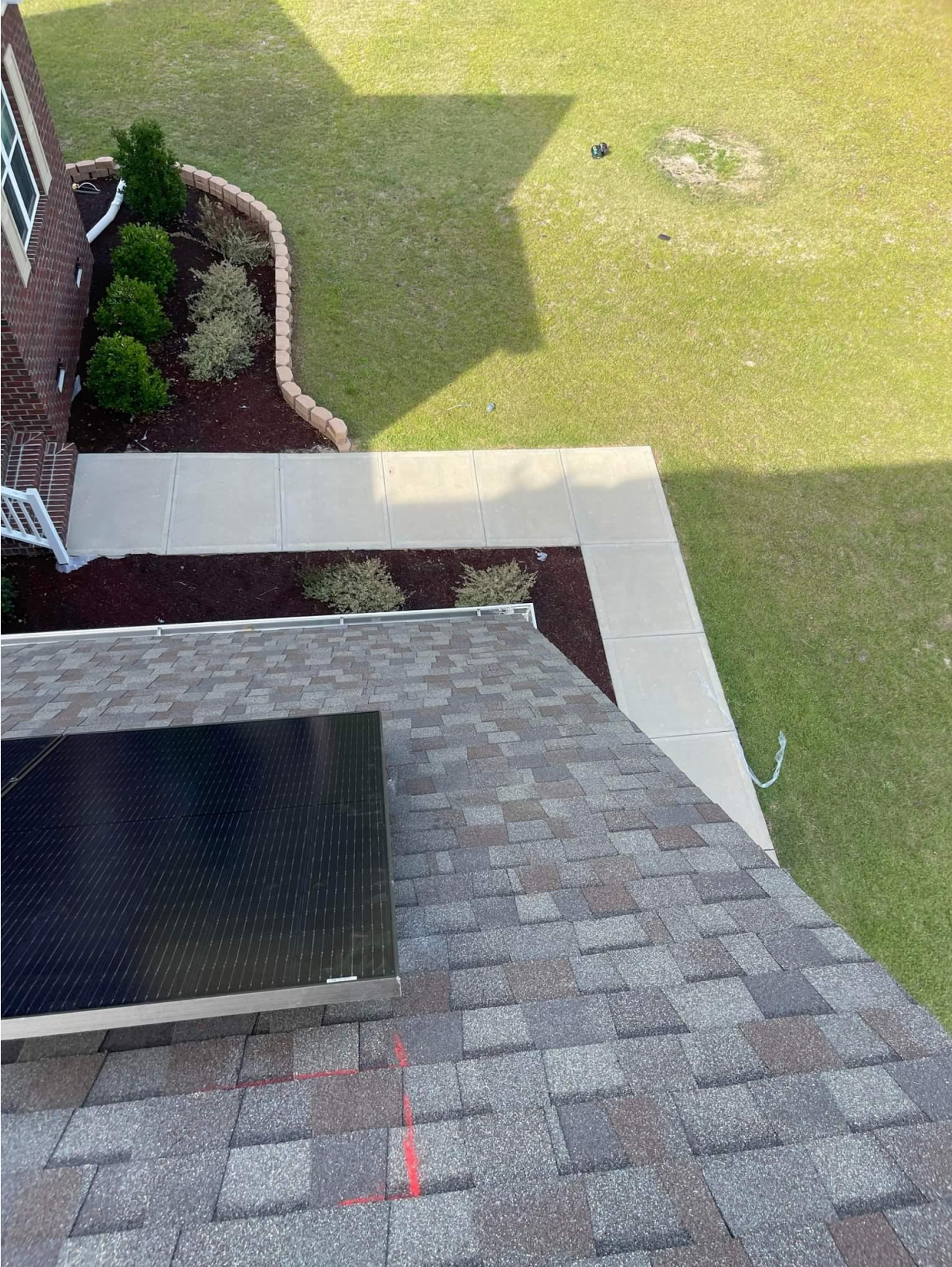
Switch is  
**On**

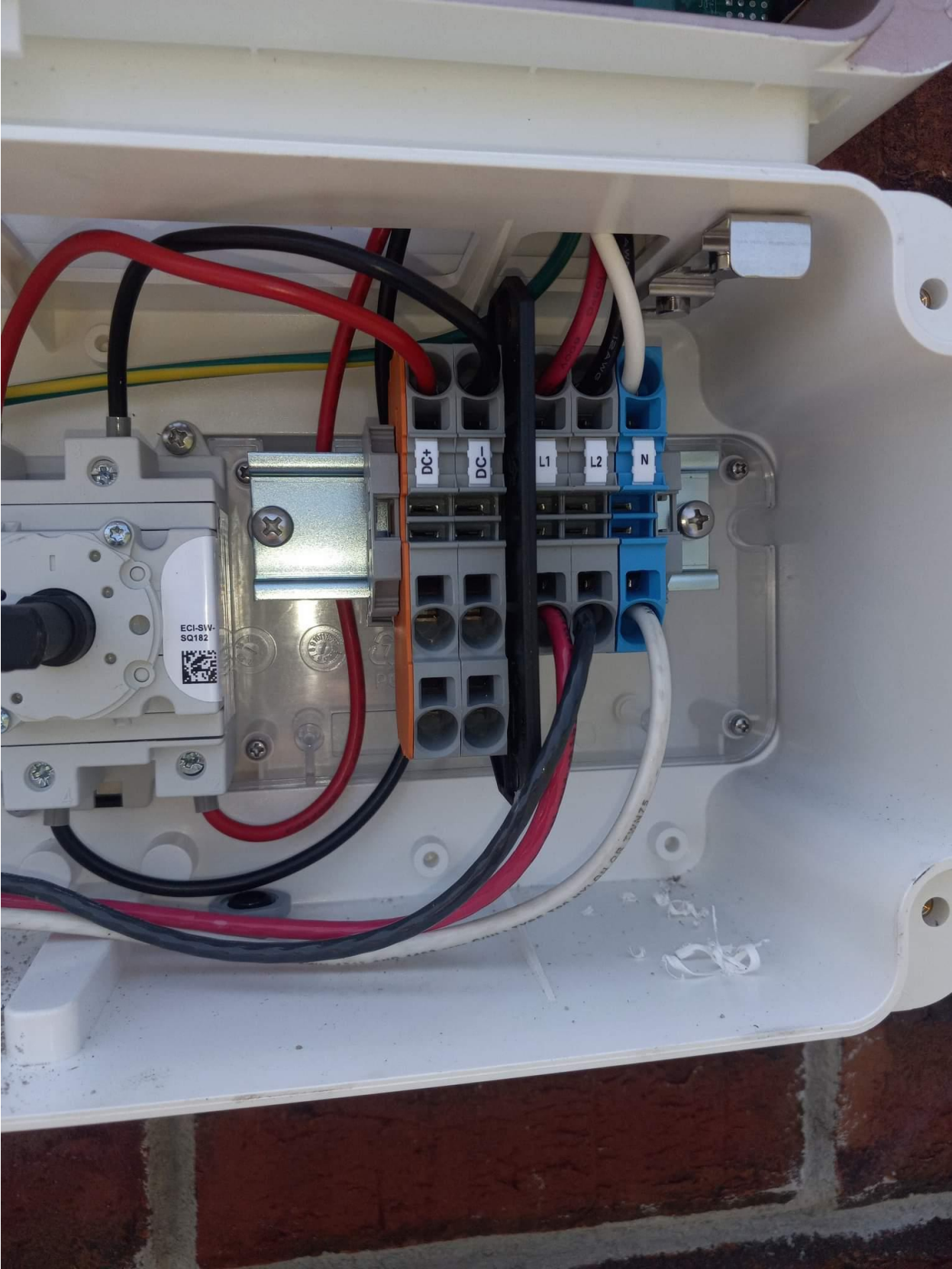
Disconnect from device













12 Sub-Pan  
14 upstairs  
16 A/C  
18  
20

PHOTOVOLTAIC SOLAR BREAKER 05-343

PHOTOVOLTAIC SOLAR BREAKER 05-343

**WARNING**  
SOLAR ELECTRIC  
CIRCUIT BREAKER  
IS BACKFED 05-342

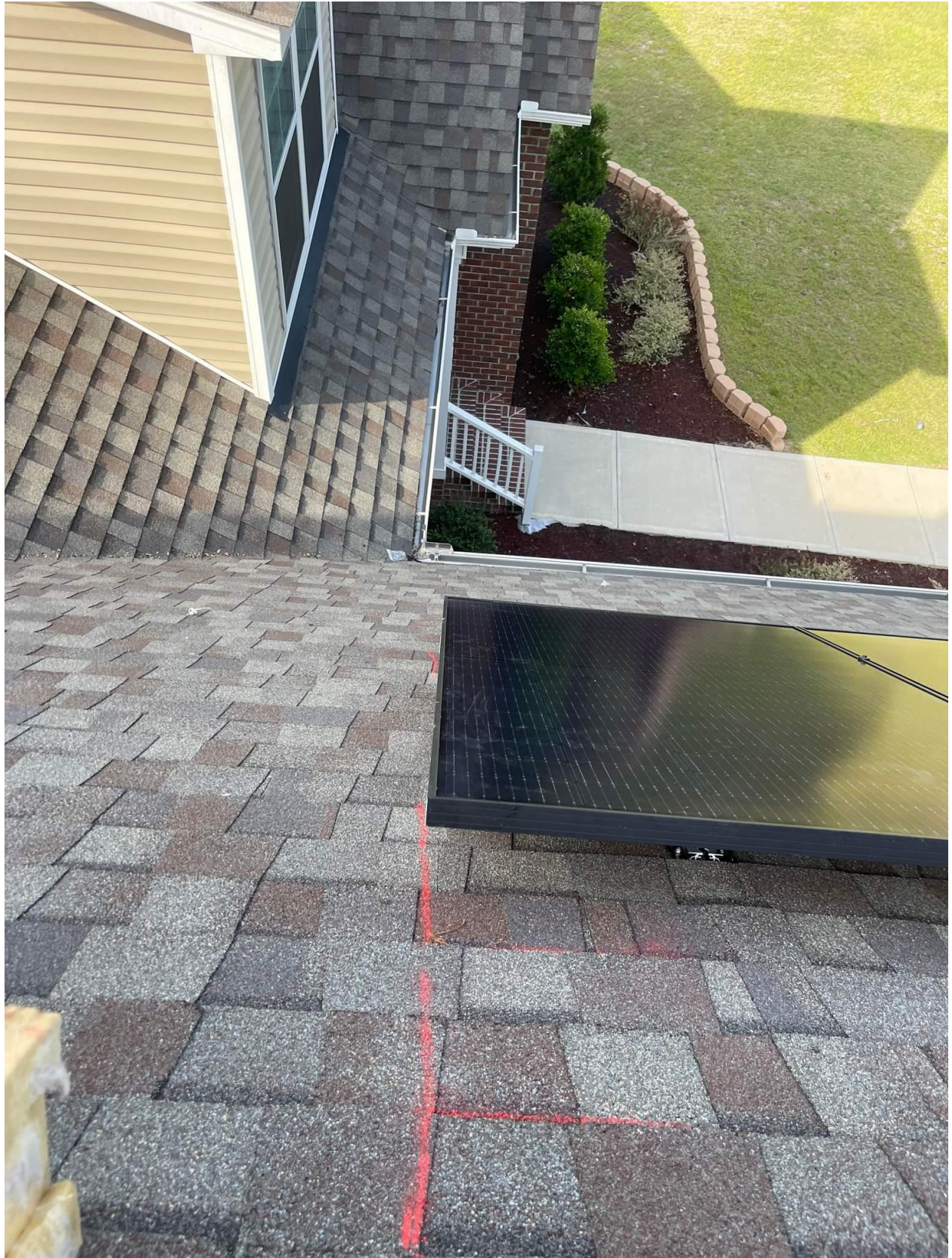






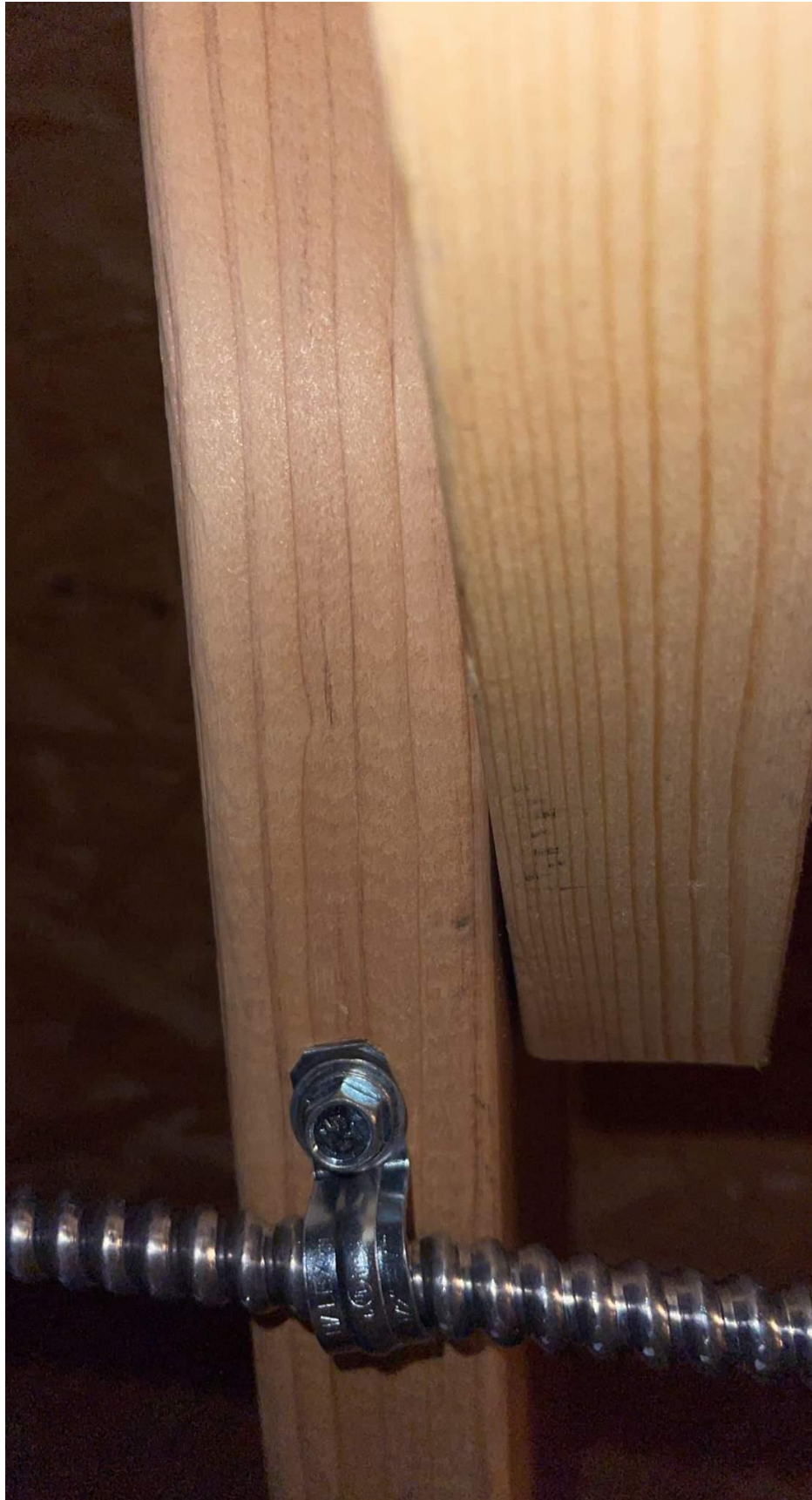


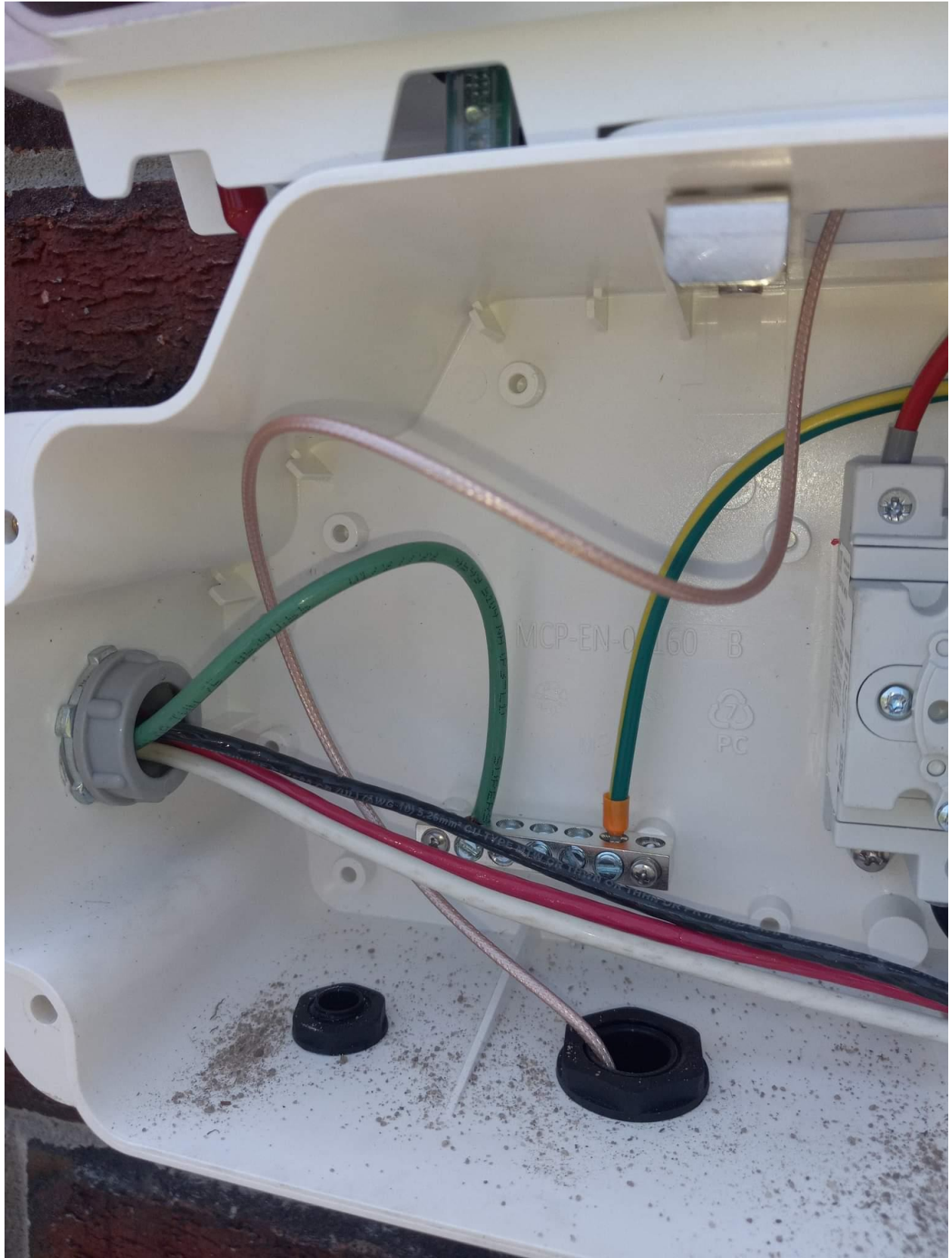


















200A

MAIN

Cook  
TOP

Downstairs  
A/C

oven  
oven

Hot  
W/H

UPstairs

Heat

Downstairs

Heat

inside  
Sub-Panel

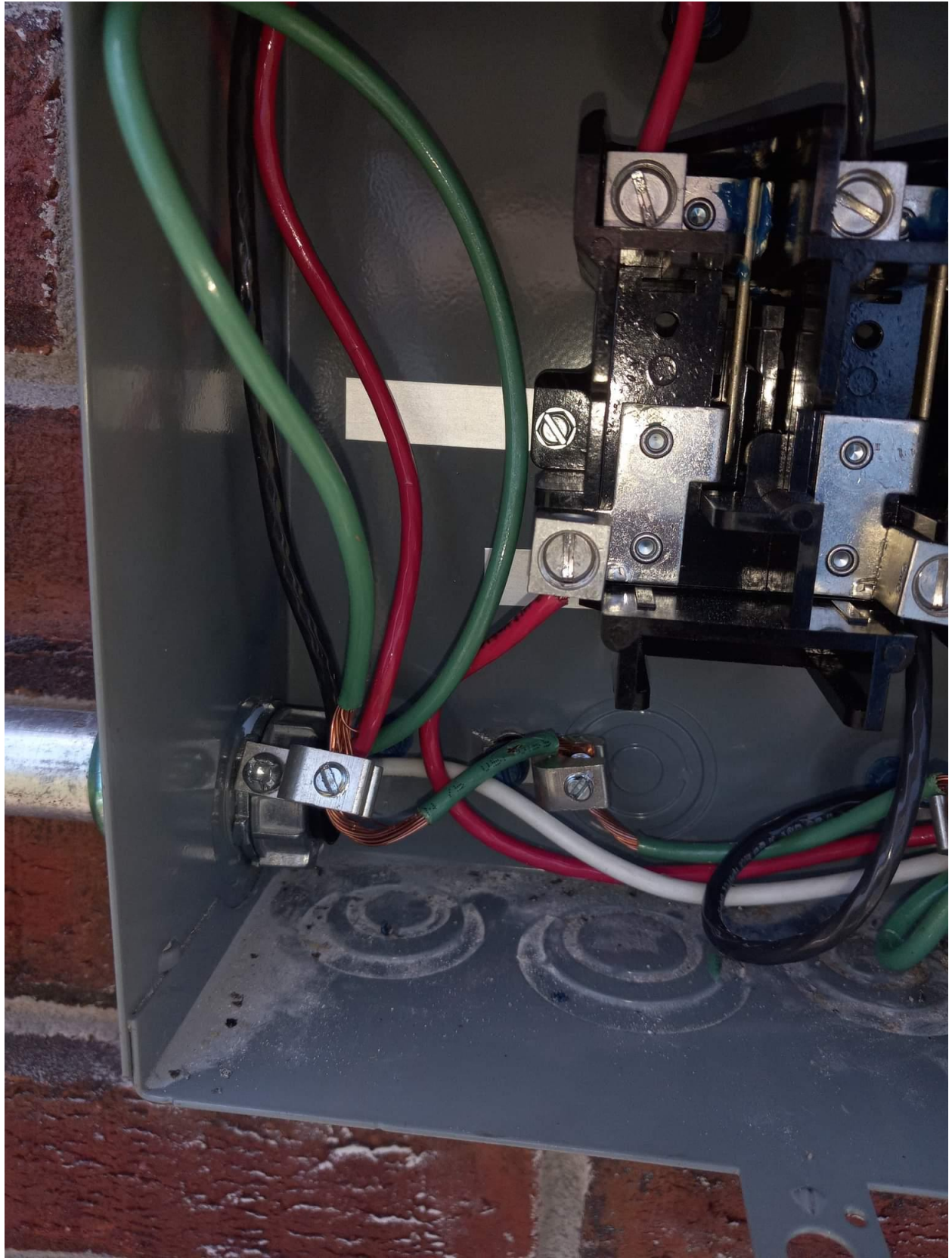
upstairs  
A/C

PHOTOVOLTAIC  
SOLAR BREAKER

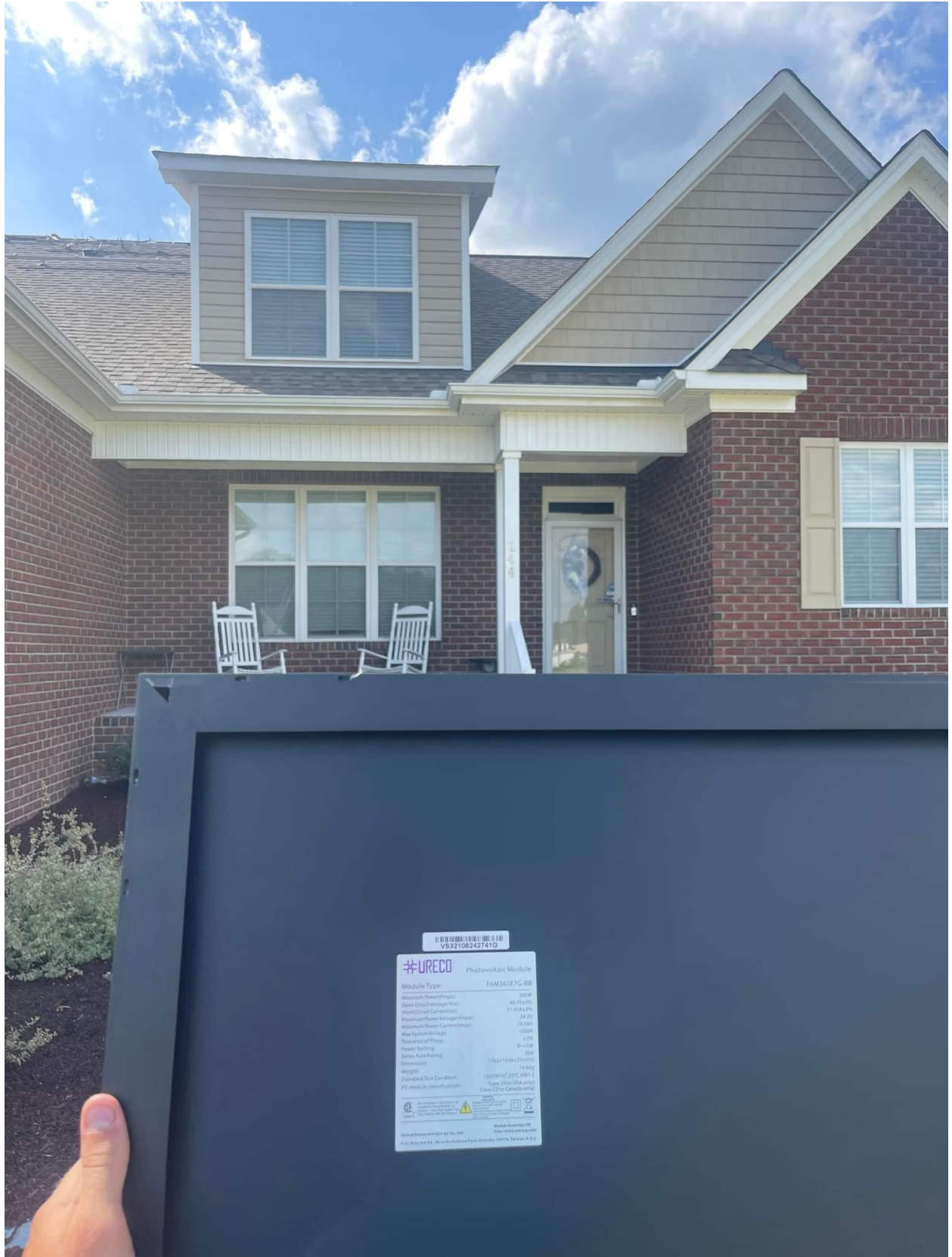
PHOTOVOLTAIC  
SOLAR BREAKER

**WARNING**  
SOLAR ELECTRIC  
CIRCUIT BREAKER  
IS BACKFED

The main electrical panel contains 20 individual circuit breakers arranged in two vertical columns. The breakers are labeled with their respective amperage ratings: 30, 30, 40, 40, 50, 50, 30, 30, 30, 30, 20, 20. The top breaker is the 200A main breaker. The panel is numbered 1 through 20 on both sides of the breaker rows.







VB321002427410

**WRECO** Photovoltaic Module

Module Type: T6M3657G-88

Maximum Power (P <sub>max</sub> )	300W
Open Circuit Voltage (V <sub>oc</sub> )	40.79V (1%)
Short Circuit Current (I <sub>sc</sub> )	7.143A (2%)
Maximum Power Voltage (V <sub>mp</sub> )	34.2V
Maximum Power Current (I <sub>mp</sub> )	8.8A
Max System Voltage	1000V
Temperature of P-N	1.1%
Power Factor	0.98
Series Fuse Rating	20A
Dimensions	1762x1044x35mm
Weight	18.0kg
Standard Test Condition	1000W/m <sup>2</sup> , 25°C, AM1.5
IEC module classification	Type 2 (20kV USA only) Class 2 (20kV Canada only)

© 2018 WRECO Energy Co., Ltd. Module Assembly 10  
http://www.wreco.com/

WRECO Energy Co., Ltd. 10000 Science Park, Houston, TX 77056, U.S.A.



Jerome Bass 4.38 kw

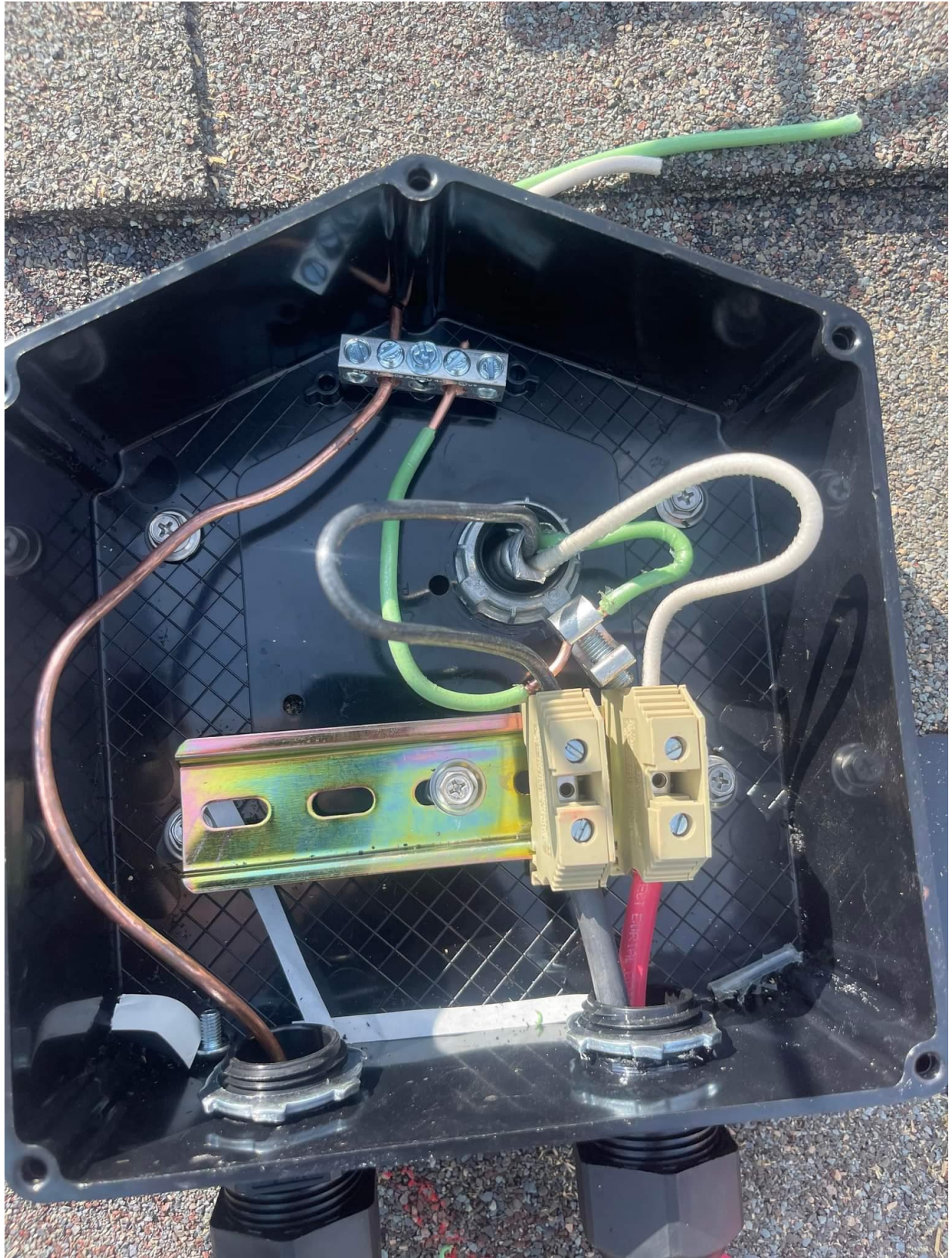


d N



S-12







**KOBALT**

40A

400A

Temp  
°C/°F

Ω

CAP

V

Hz



OFF

NCV

AUTO  
POWER  
OFF

DT-9180D

12.20 V

RANGE

MODE

MAX  
MIN

AC TRMS CLAMP METER



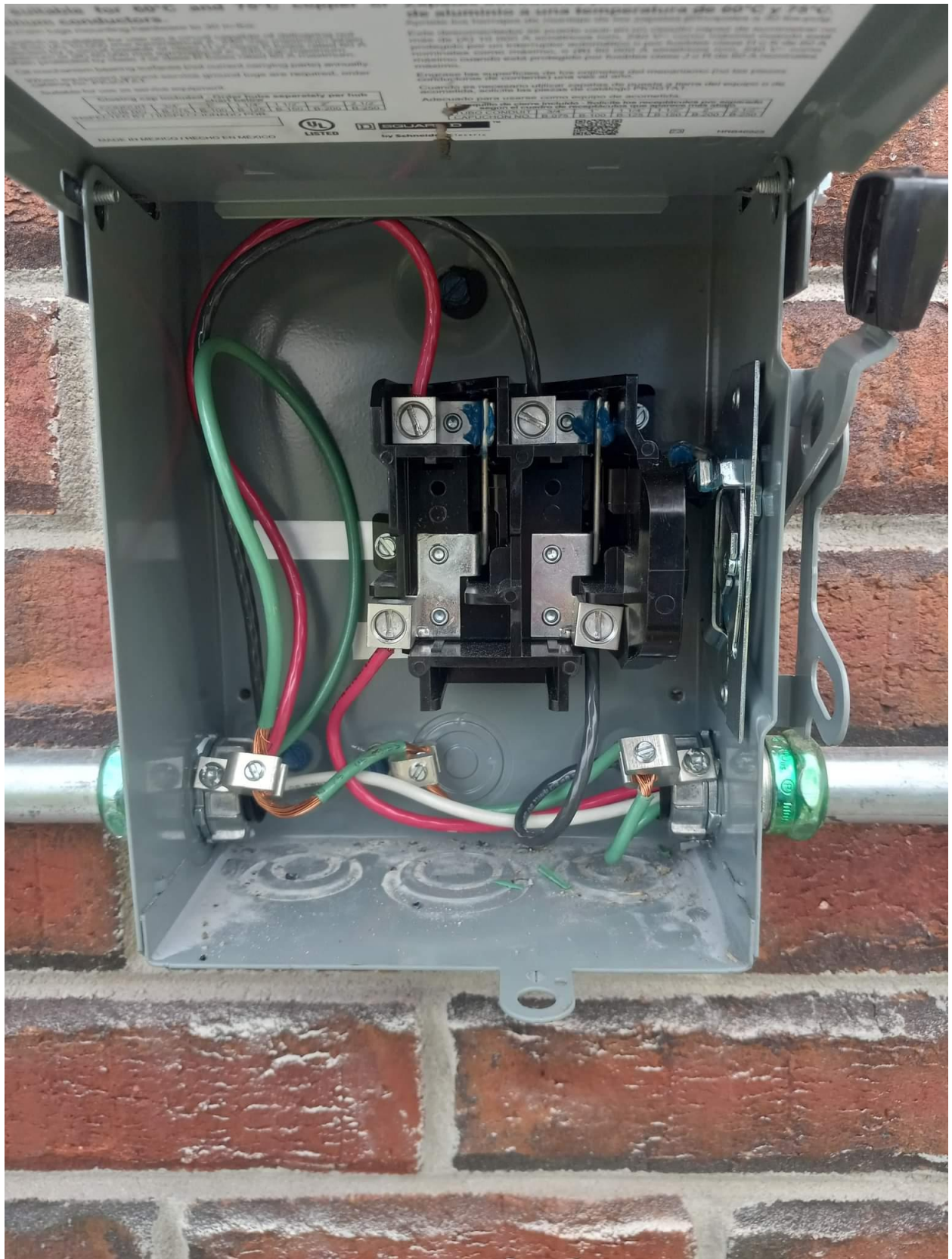
CAT III 600V

COM

V Ω CAP  
← → Hz Temp

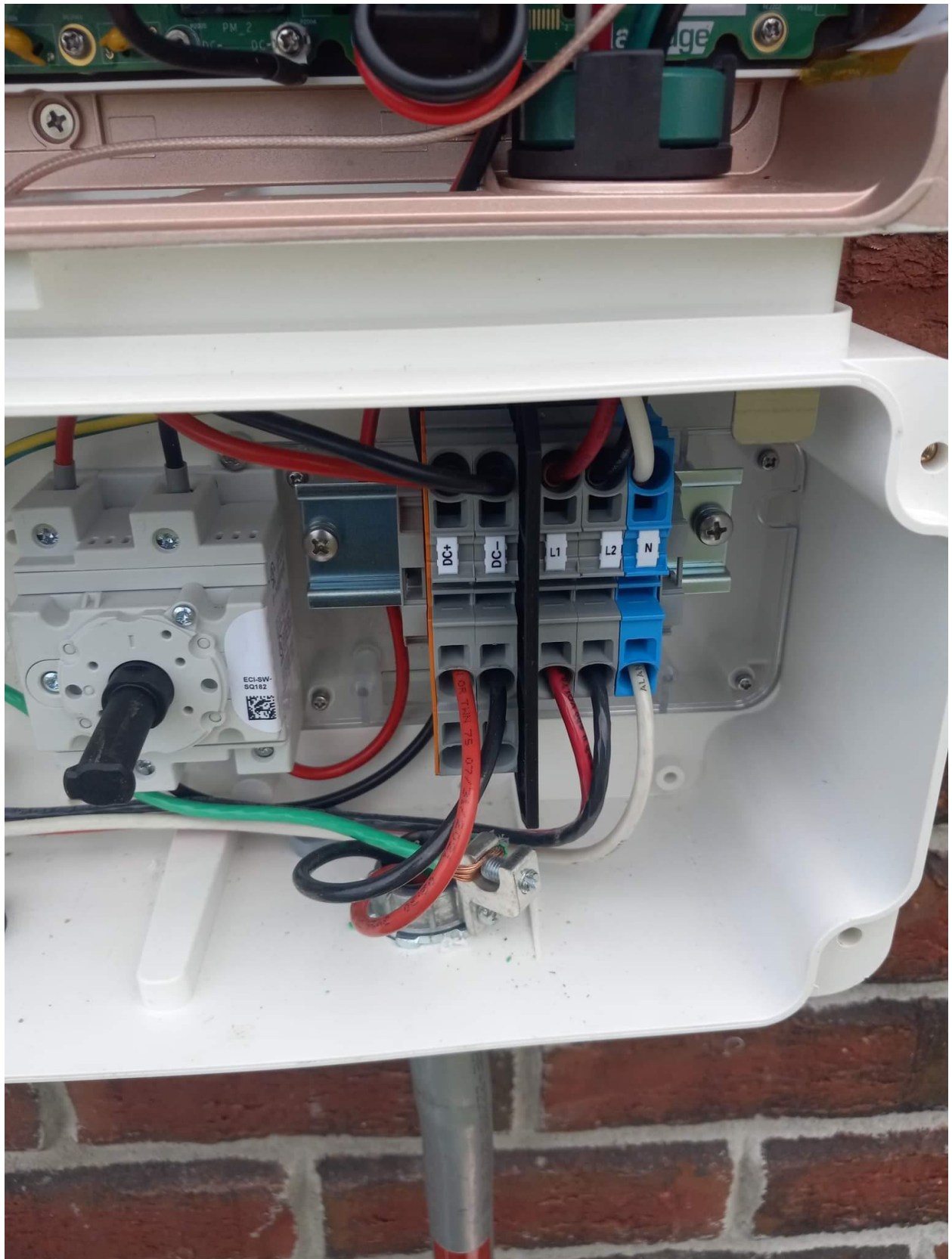








jerome bass 4.38kw  
144 brower rd cameron nc  
dc junction box









**⚠ WARNING**  
THIS SERVICE METER  
IS ALSO SERVED BY A  
PHOTOVOLTAIC SYSTEM

**⚠ DANGER**  
Hazardous Voltage.  
Will cause death, serious injury  
or substantial property damage.  
Turn off power supplying this  
equipment before working inside.



**⚠ PELIGRO**  
Voltaje peligroso. Causará la  
muerte, lesiones graves o daño  
substantial a la propiedad.  
Desconecte el suministro de energía a este  
equipo antes de trabajar en su interior.

CONTAINS FCC ID: R1PES1R156    CONTAINS IC: 5254A-EG15156  
Landis+Gyr **GRIDSTREAM RF**  
90B28E07  
MFG & MODEL: 90B28E07  
CB Integrated FOCUS 8.0x

Type **FOCUS AXRe-SD**  
FORM 25 CL200 240V 3W 60Hz TA=30 Kh

**CENTRAL EMC**

165 691 530  
Landis+Gyr

SHOCK HAZARD...  
LE RISQUE D'ELECTROCUTION...  
EXISTE PELIGRO DE DESCARGA EL CONDUCTOR...

REMOVE THIS DECAL  
REVOIR CETTE ETIQUETTE  
TIRAR LA PEGATINA











