



**⚠ WARNING**  
DUAL POWER SUPPLY  
SOURCES: UTILITY GRID  
AND PV SOLAR  
ELECTRIC SYSTEM



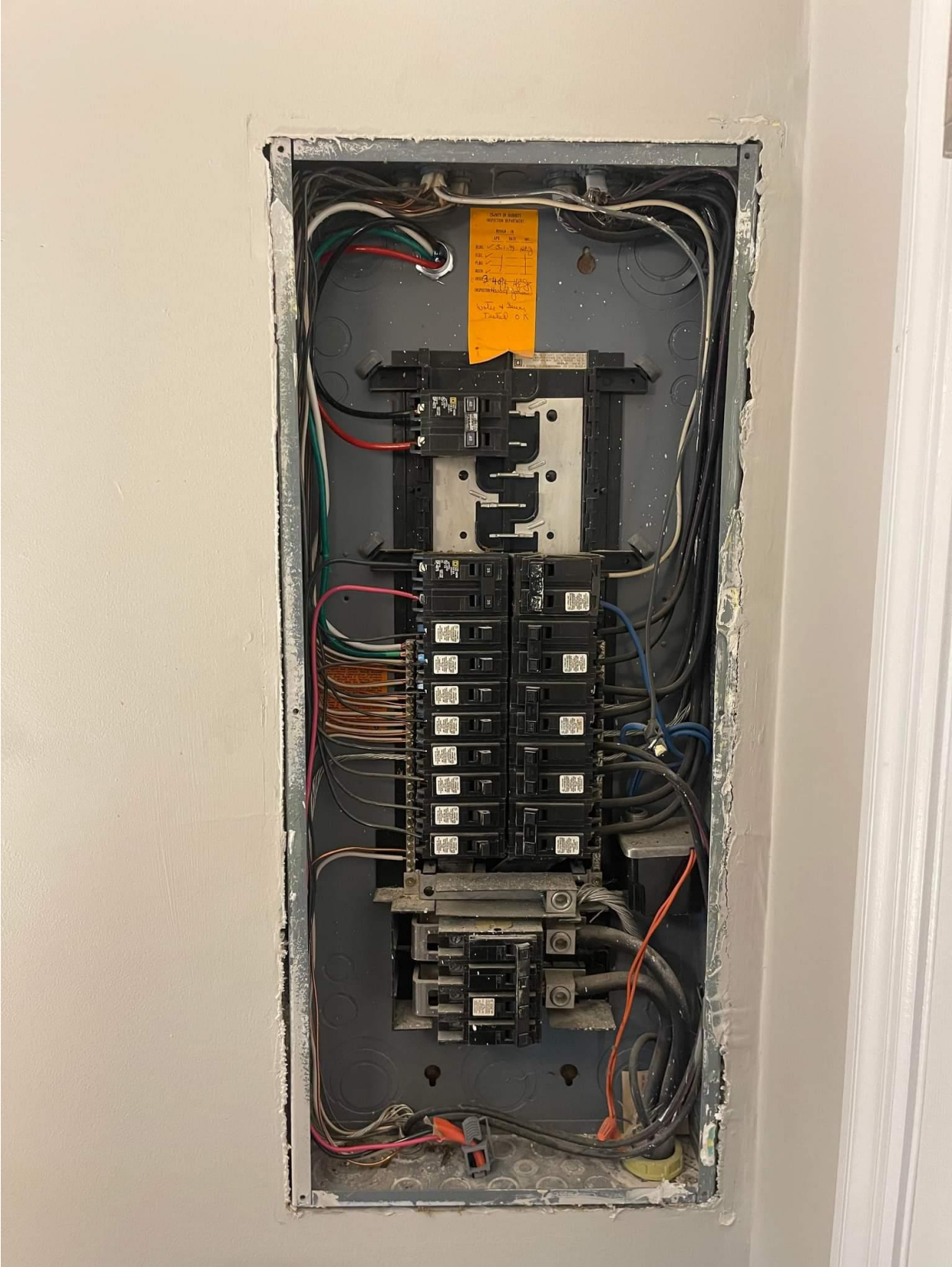
**WARNING** ELECTRIC SHOCK HAZARD. THE DC CONDUCTORS OF THIS PHOTOVOLTAIC ARRAY IS EXPOSED TO LIGHT, IT SUPPLIES A DC VOLTAGE TO EQUIPMENT. COVER PV MODULE WITH OPAQUE MATERIAL BEFORE CONNECTING OR DISCONNECTING THIS OPTIMIZER. DURING FAULT, ZERO CURRENT IS SOURCED INTO DC ARRAY BY CONVERTER. SYSTEM ARE UNGROUNDED AND MAY BE ENERGIZED.

**CAUTION** HOT SURFACES-TO REDUCE THE RISK OF BURNS-DO NOT TOUCH. RISK OF ELECTRIC SHOCK-WHEN THE PHOTOVOLTAIC ARRAY IS EXPOSED TO LIGHT, IT SUPPLIES A DC VOLTAGE TO EQUIPMENT. COVER PV MODULE WITH OPAQUE MATERIAL BEFORE CONNECTING OR DISCONNECTING THIS OPTIMIZER. DURING FAULT, ZERO CURRENT IS SOURCED INTO DC ARRAY BY CONVERTER.

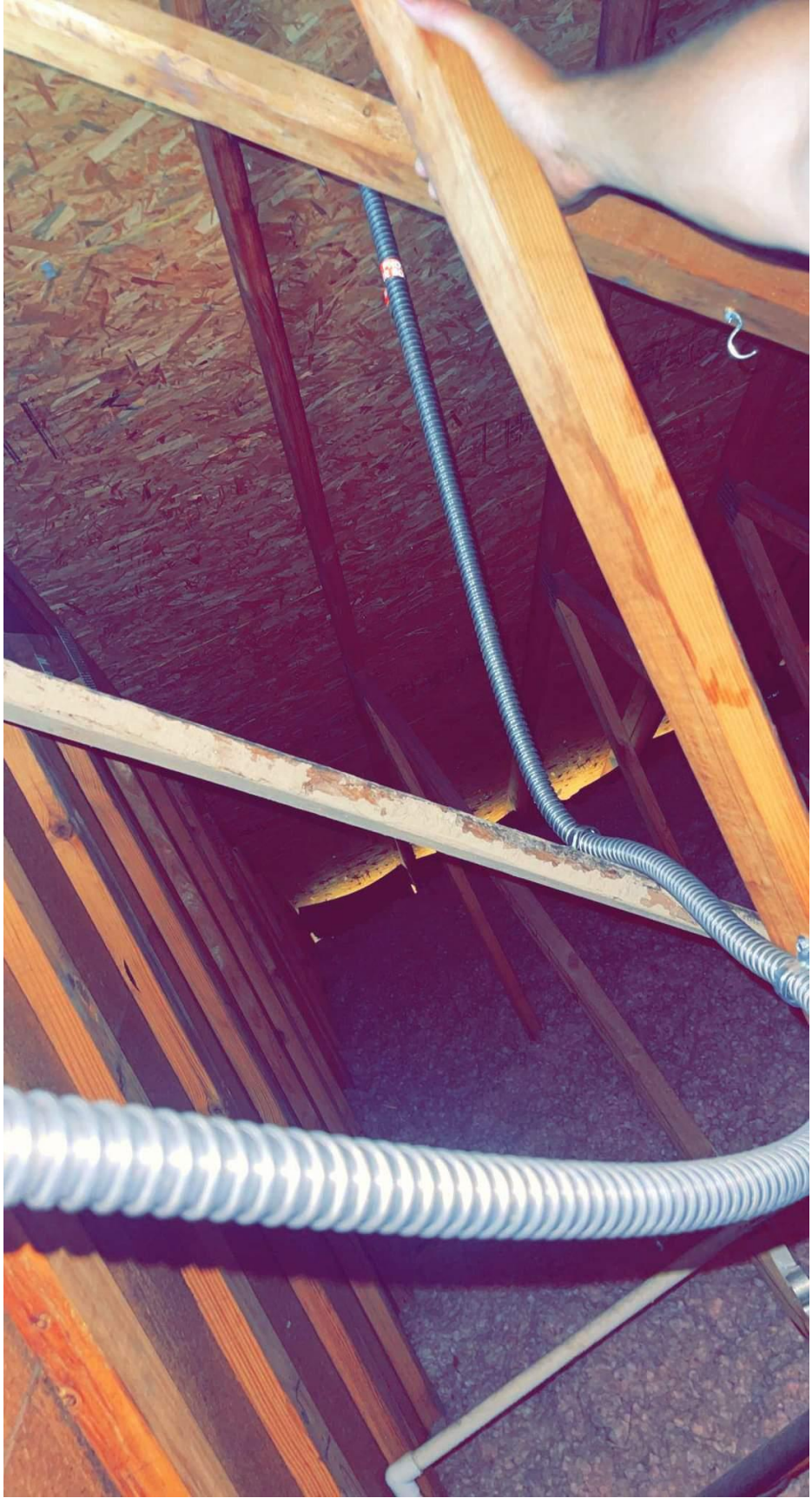
**AVERTISSEMENT** RISQUE DE CHOC ELECTRIQUE: QUAND LE CHAMP PHOTOVOLTAIQUE EST EXPOSE A LA LUMIERE, UNE TENSION CC EST FOURNIE A CET EQUIPEMENT. SURFACES CHAUDES: NE PAS TOUCHER, AFIN D REDUIRE LES RISQUES DE BRULURES. LE COUR DE RETOUR INJECTE PAR LE CONVERTISSEUR CAS DE DEFAILLANCE DANS LE MODULE TOUJOURS NUL.

**Do Not Remove** 155DF807-71  
SolarEdge Technologies GmbH/  
Werner-Eckert-Strasse 6/8129 Munich/Germany  
Inter tek 4001-90  
FC

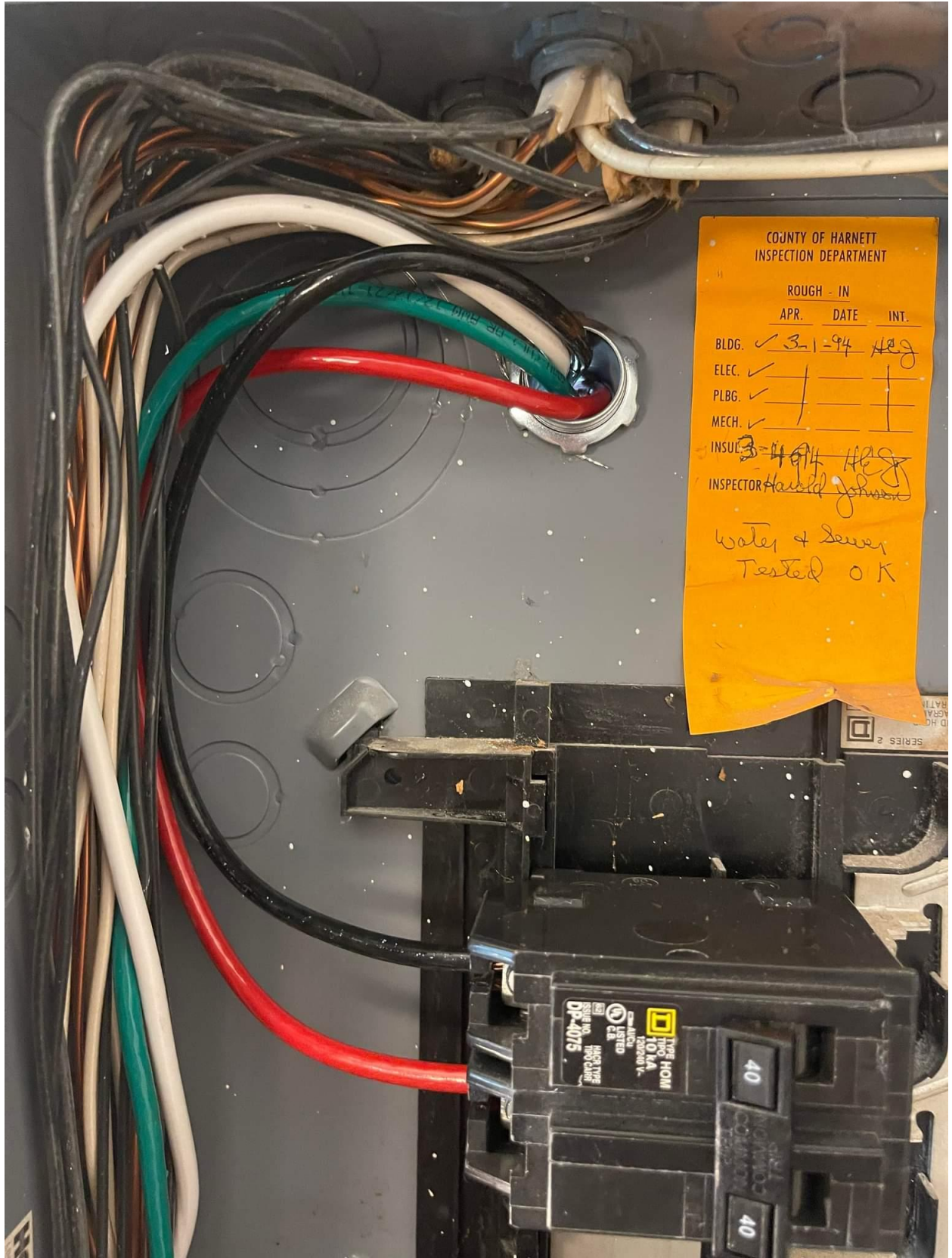
IN











COUNTY OF HARNETT  
INSPECTION DEPARTMENT

ROUGH - IN

	APR.	DATE	INT.
BLDG.	✓	3-1-94	HJG
ELEC.	✓		
PLBG.	✓		
MECH.	✓		
INSUR.	✓	3-4-94	HJG
INSPECTOR	Harold Johnson		

Water & Sewer  
Tested O.K

TYPE HOMI  
10 KA  
120/240 V.  
UL LISTED  
UL 489  
DP-4075

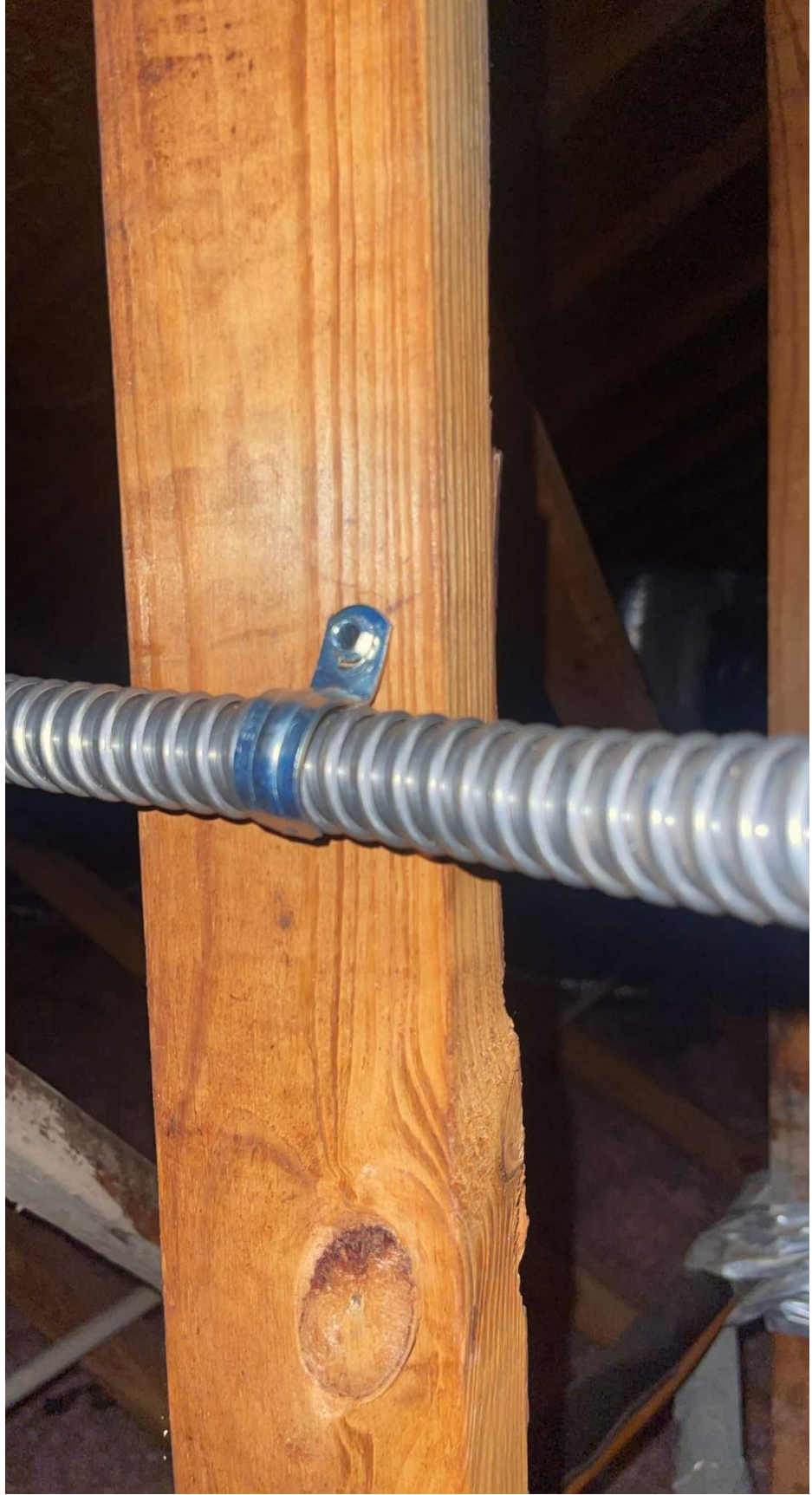
40

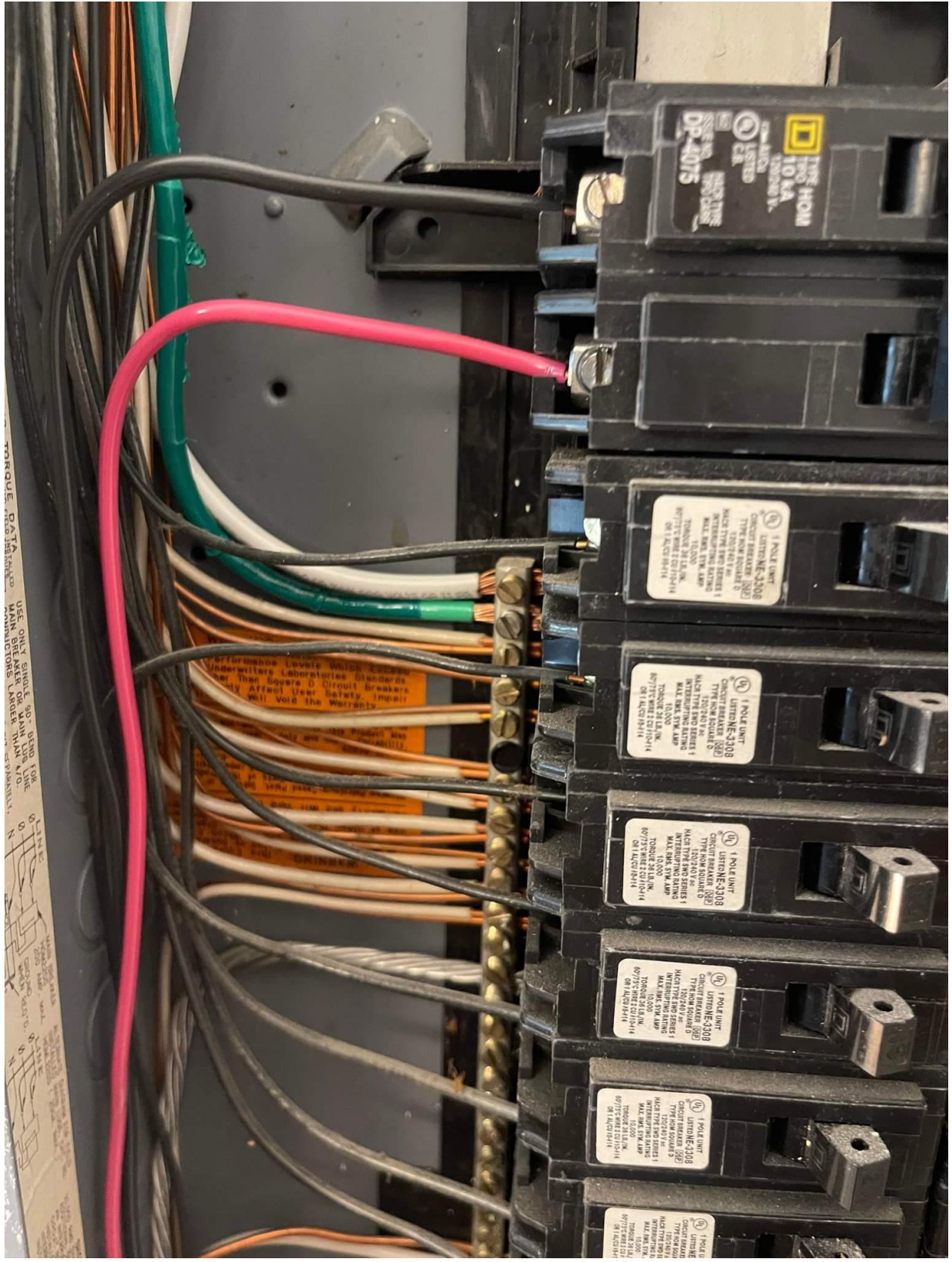
40



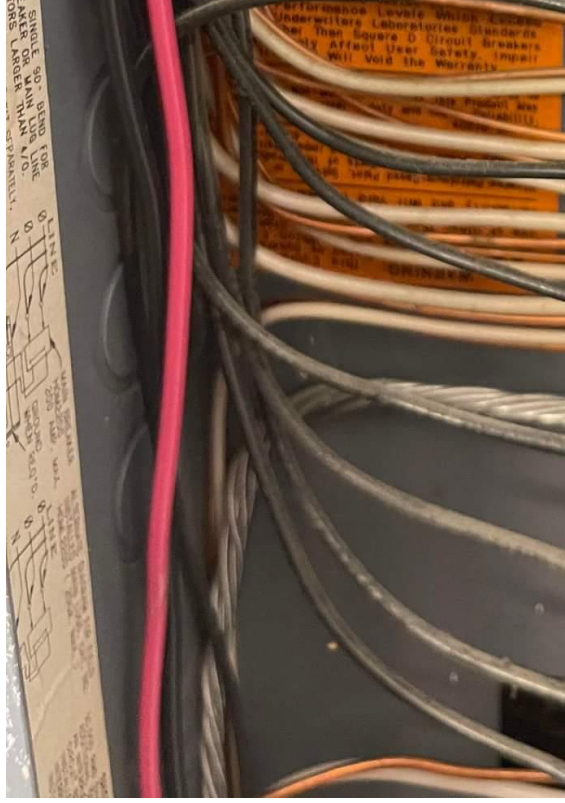








TORQUE DATA  
USE ONLY SINGLE END BAND FOR  
MAIN BUS MAIN LUG LINE  
MAIN BUSTERS LARGER THAN SPACELUG



Performance Levels which Exceed  
Underwriters Laboratories Standards  
See The Square D Circuit Breaker  
May Affect User Safety. Impact  
Will Void the Warranty.

10 KA  
100 AMP  
100% RATED  
UL LISTED  
UL 888  
UL 1008-1  
DR-4075

1 POLE UNIT  
LISTED NF-3208  
CIRCUIT BREAKER (CB)  
TYPE NON SQUARE D  
MATCH THE SMO SERIES 1  
INTERRUPTING RATING  
MALL MALL SYM AMP  
TERROR 21.1L IN.  
80775 WIRE 120/10/14  
ON 1 AC210/14

1 POLE UNIT  
LISTED NF-3208  
CIRCUIT BREAKER (CB)  
TYPE NON SQUARE D  
MATCH THE SMO SERIES 1  
INTERRUPTING RATING  
MALL MALL SYM AMP  
TERROR 21.1L IN.  
80775 WIRE 120/10/14  
ON 1 AC210/14

1 POLE UNIT  
LISTED NF-3208  
CIRCUIT BREAKER (CB)  
TYPE NON SQUARE D  
MATCH THE SMO SERIES 1  
INTERRUPTING RATING  
MALL MALL SYM AMP  
TERROR 21.1L IN.  
80775 WIRE 120/10/14  
ON 1 AC210/14

1 POLE UNIT  
LISTED NF-3208  
CIRCUIT BREAKER (CB)  
TYPE NON SQUARE D  
MATCH THE SMO SERIES 1  
INTERRUPTING RATING  
MALL MALL SYM AMP  
TERROR 21.1L IN.  
80775 WIRE 120/10/14  
ON 1 AC210/14

1 POLE UNIT  
LISTED NF-3208  
CIRCUIT BREAKER (CB)  
TYPE NON SQUARE D  
MATCH THE SMO SERIES 1  
INTERRUPTING RATING  
MALL MALL SYM AMP  
TERROR 21.1L IN.  
80775 WIRE 120/10/14  
ON 1 AC210/14

STRING

#'s  
PN-1 (11)

PN-2 (13)

AIRIANA YOUNG

KU876



BACK

Grid Monitoring Completed.



Pairing Completed.



**solar**edge

SN 740654A2-70



## Inverter

SN 740654A2-70

### Summary



Power  
**5.77 kW**



Voltage  
**243 Vac**



Frequency  
**60 Hz**

P\_OK: 24 of 24  
**Optimizers  
Communicating**

Server Comm.  
**No cable  
Ethernet**



Status  
**Production**

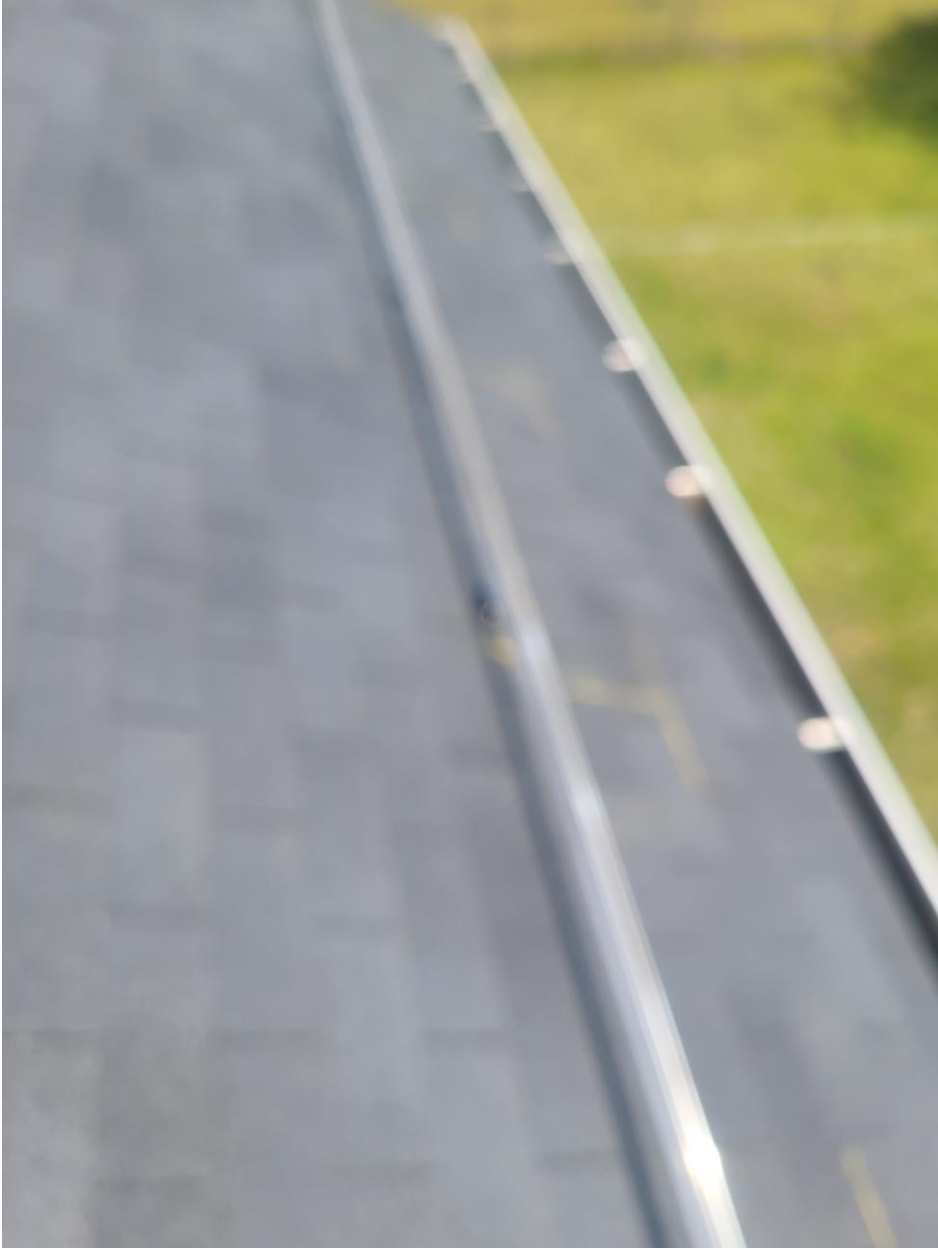
Power Limit  
**6 kW**

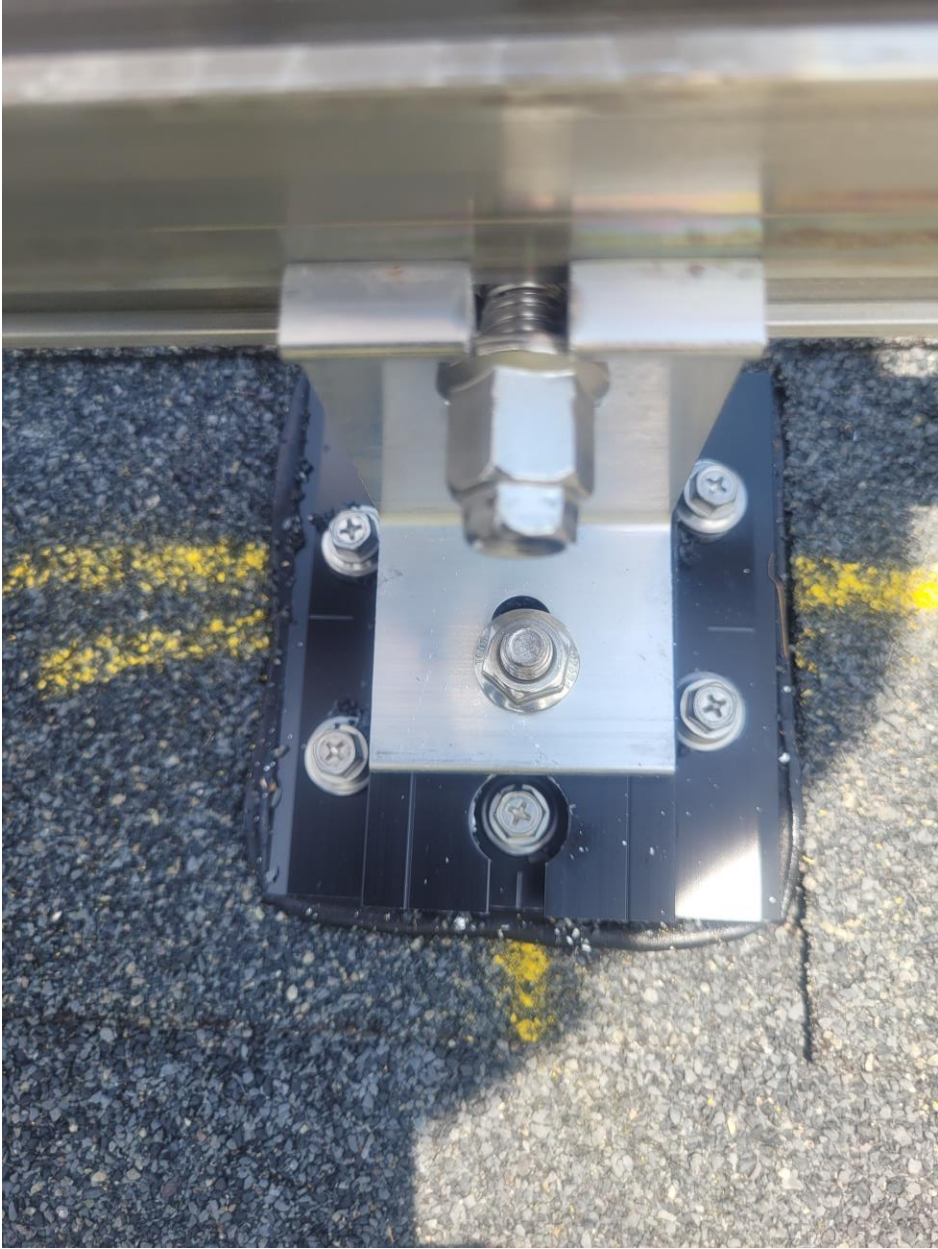
Switch is  
**On**

**Disconnect from device**



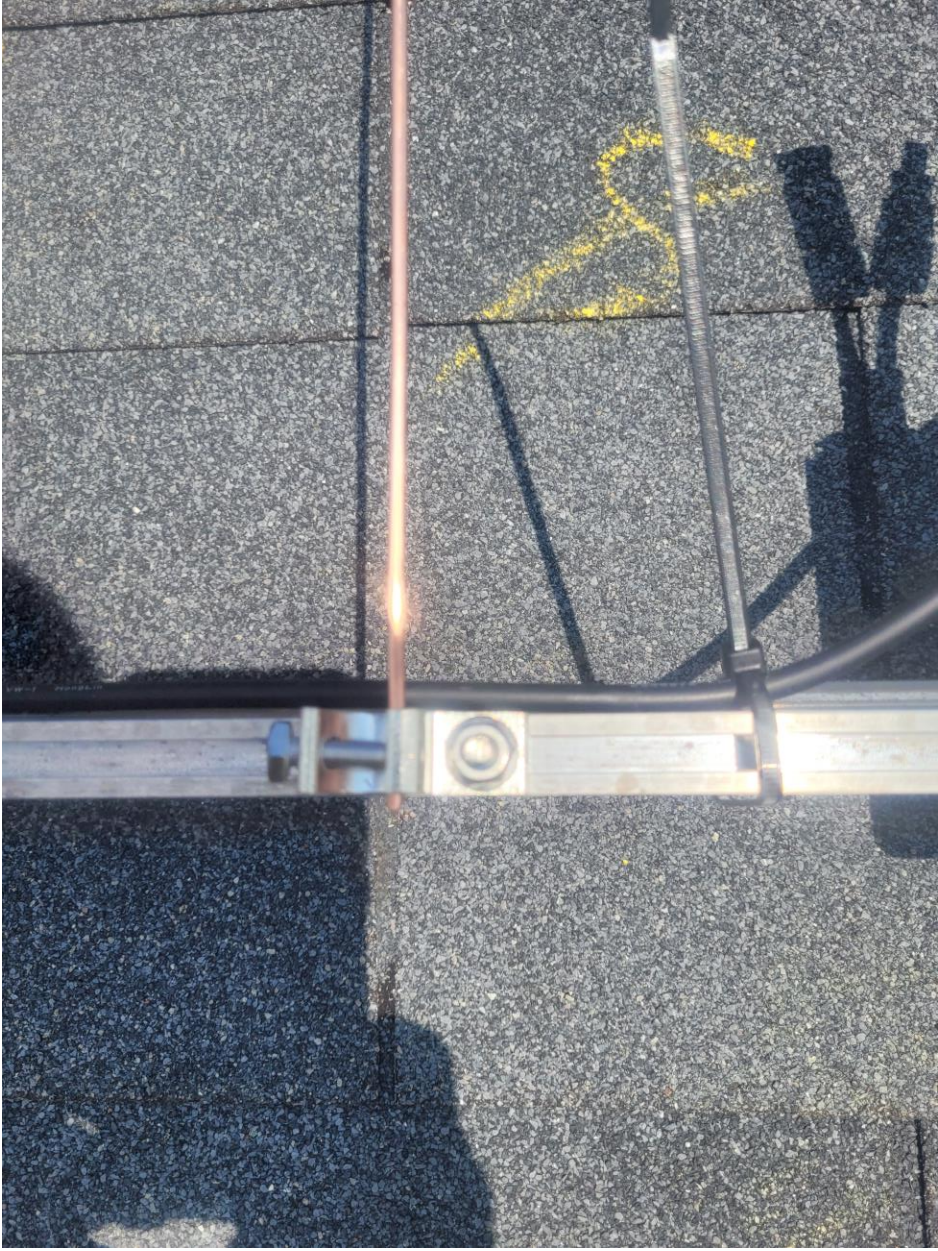






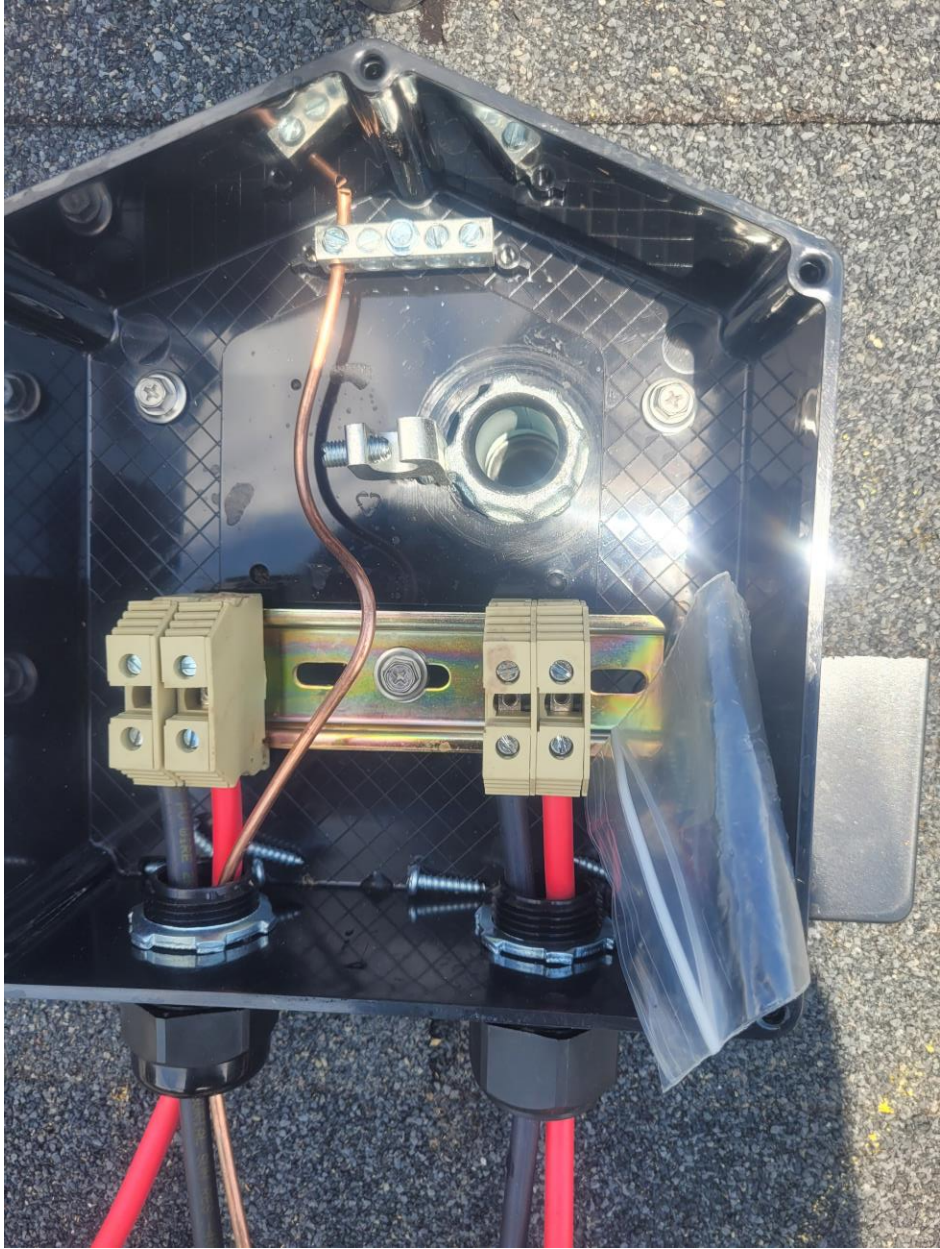


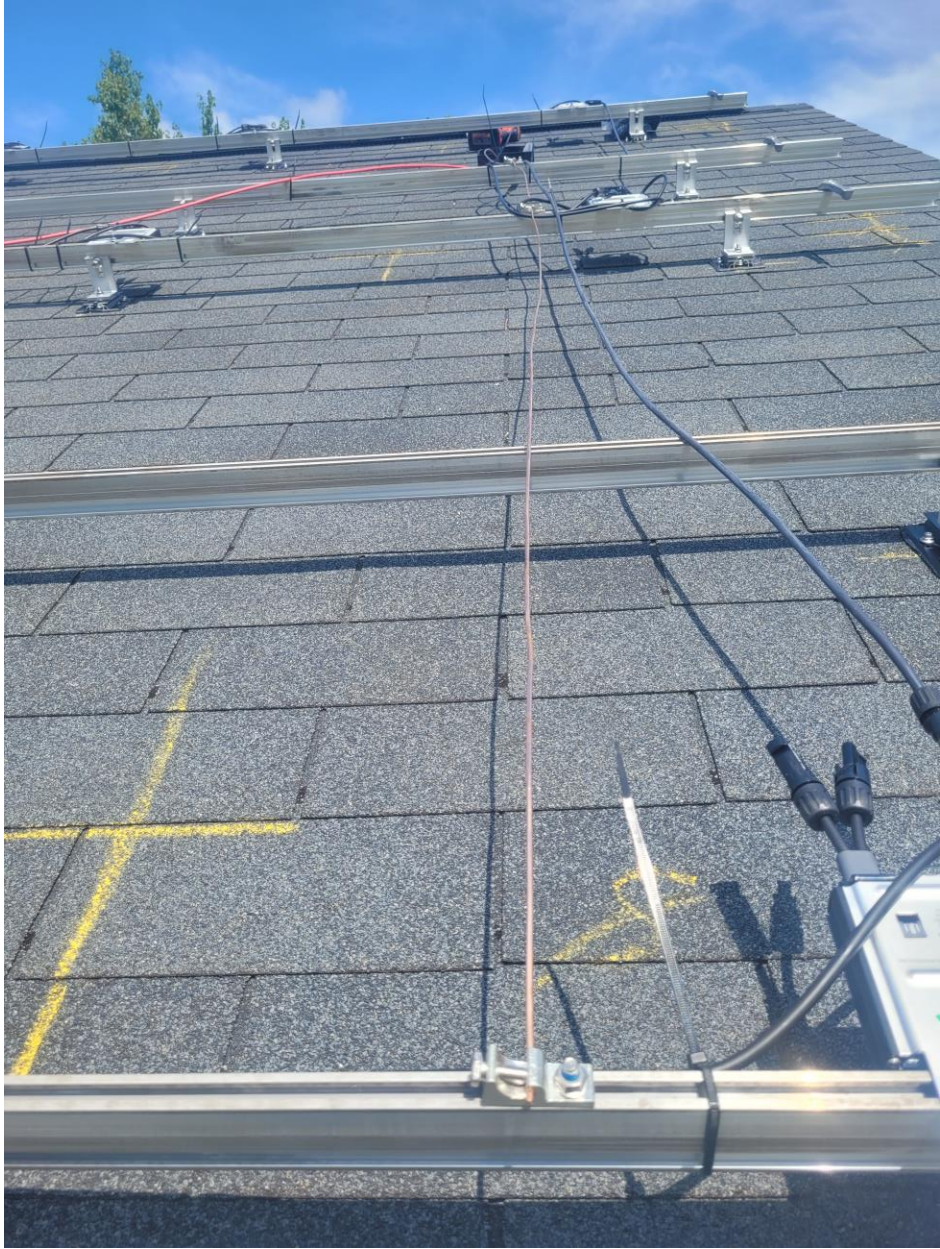




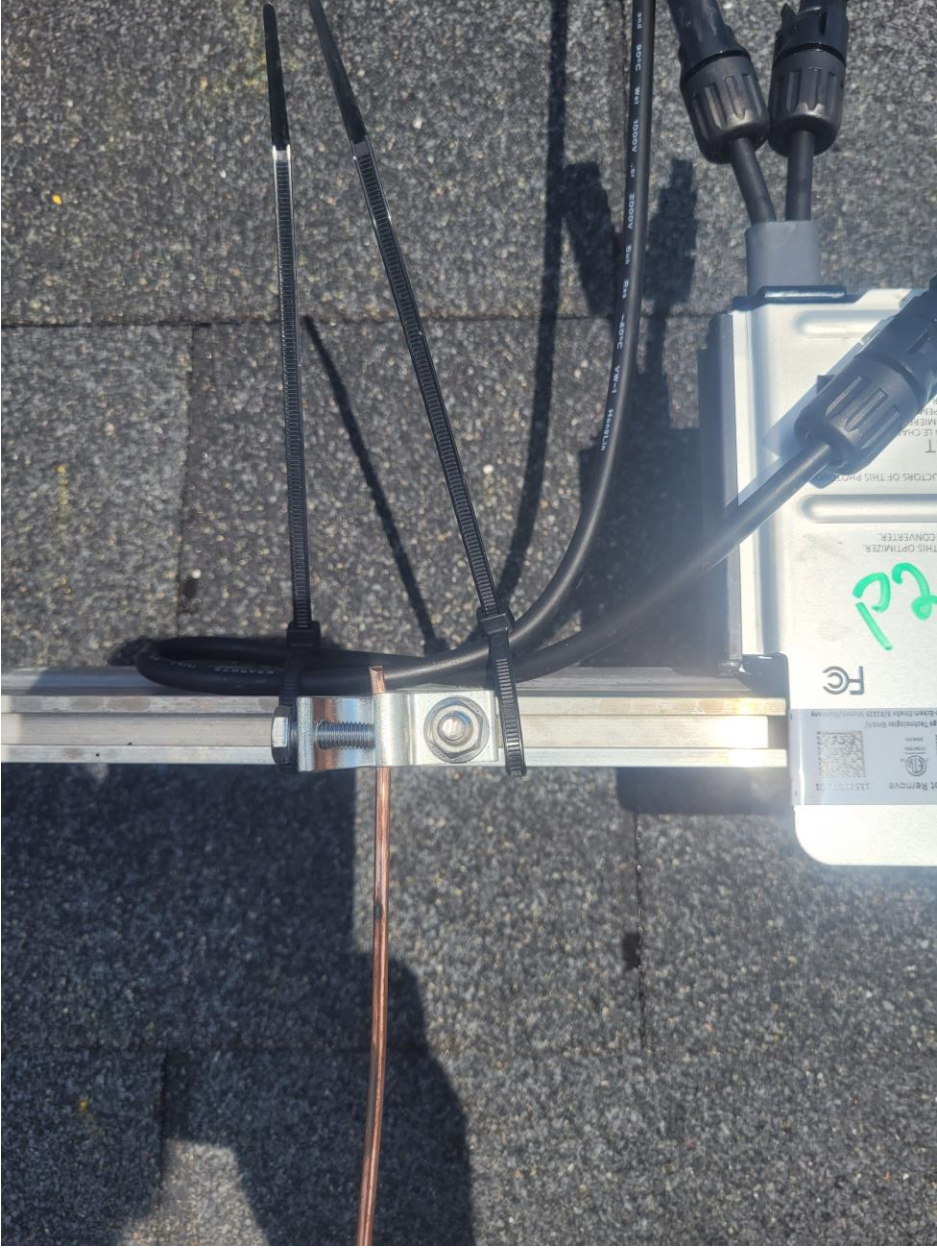


































VS32108212245G



Photovoltaic Module

Module Type: F6M365E7G-BB

Maximum Power(Pmpp):	365W
Open Circuit Voltage(Voc):	40.7V±3%
Short Circuit Current(Isc):	11.43A±3%
Maximum Power Voltage(Vmpp):	34.2V
Maximum Power Current(Imp):	10.68A
Max System Voltage:	1000V
Tolerance of Pmpp:	±3%
Power Sorting:	0~+5W
Series Fuse Rating:	20A
Dimension:	1762×1048×35(mm)
Weight:	19.6kg
Standard Test Condion:	1000W/m <sup>2</sup> ,25°C,AM1.5
PV module classification:	Type 2(For USA only) Class C(For Canada only)



See Installation Instructions for Installation Requirements to Achieve a Specified System Fire Class Rating with this Product



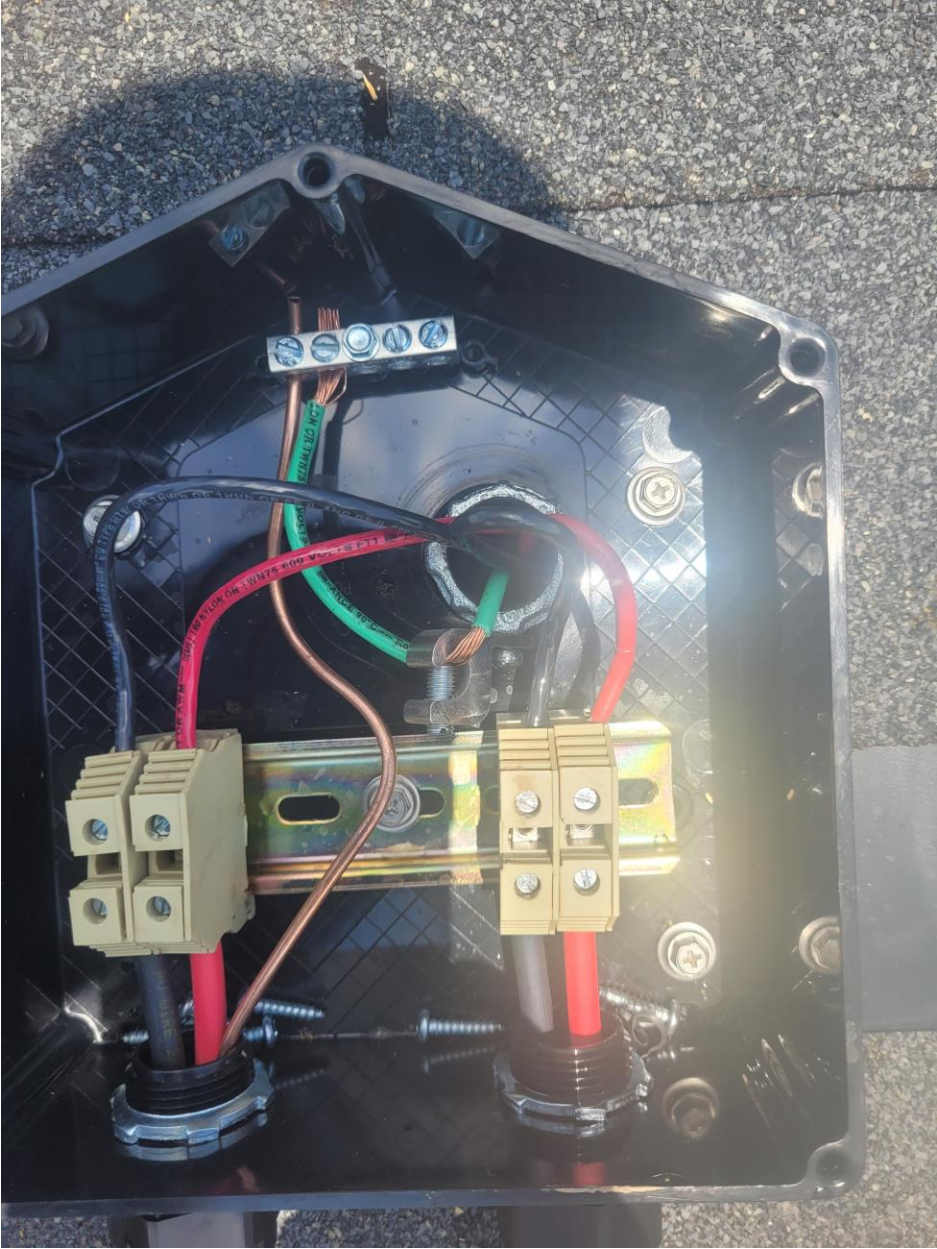
**WARNING**  
AVERTISSEMENT  
Hazardous Electricity Can shock, burn or cause death. Do not touch terminals.  
L'électricité dangereuse peut le faire. Choc, brûlures ou décès. Ne touchez pas le terminal.



United Renewable Energy Co., Ltd  
7, Li-Hsin 3rd Rd., Hsinchu Science Park, Hsinchu, 30078, Taiwan, R.O.C

Module Assembly: VN  
<http://www.urecorp.com/>

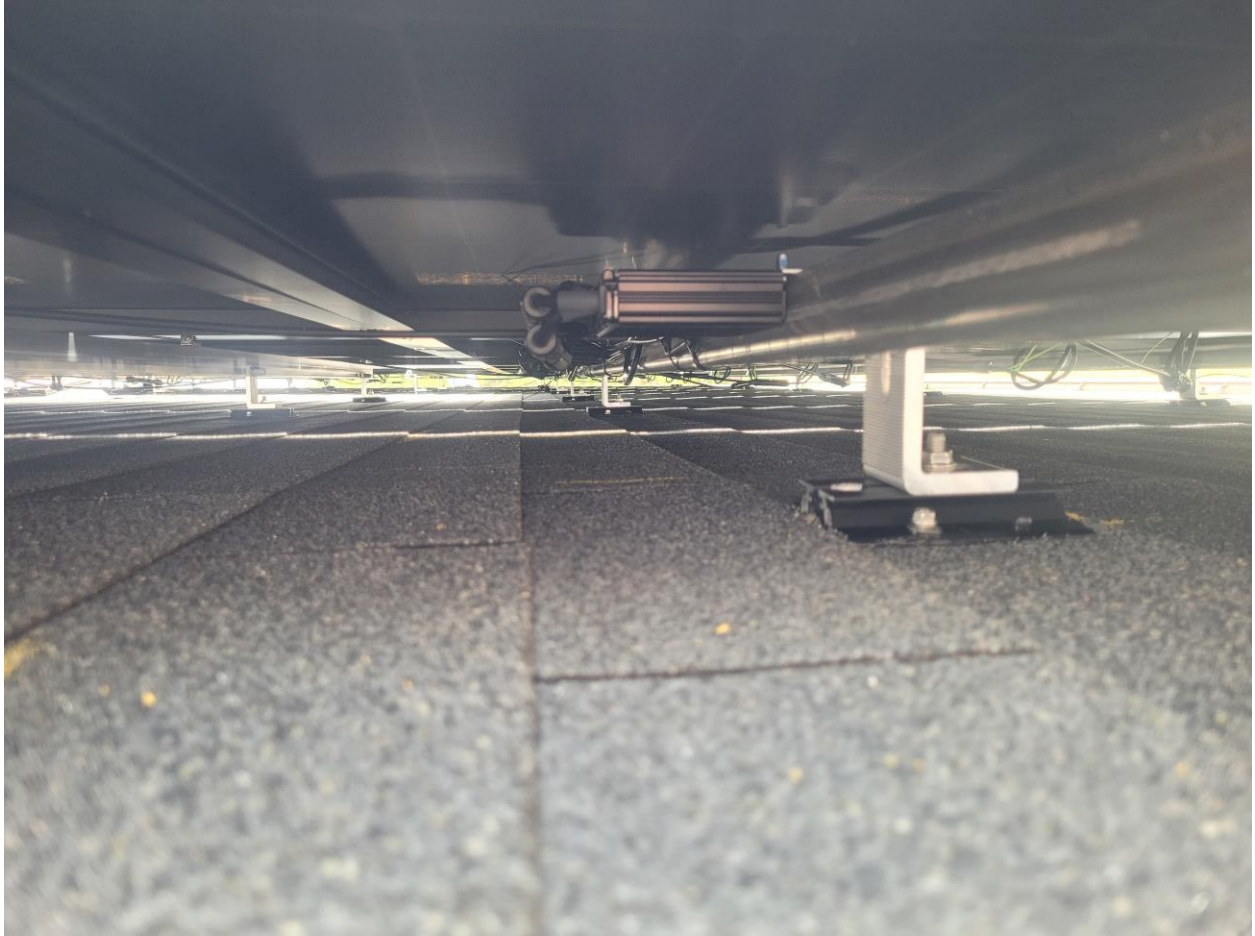




















DYMO

Label jam!

AAA

B

I



ABC

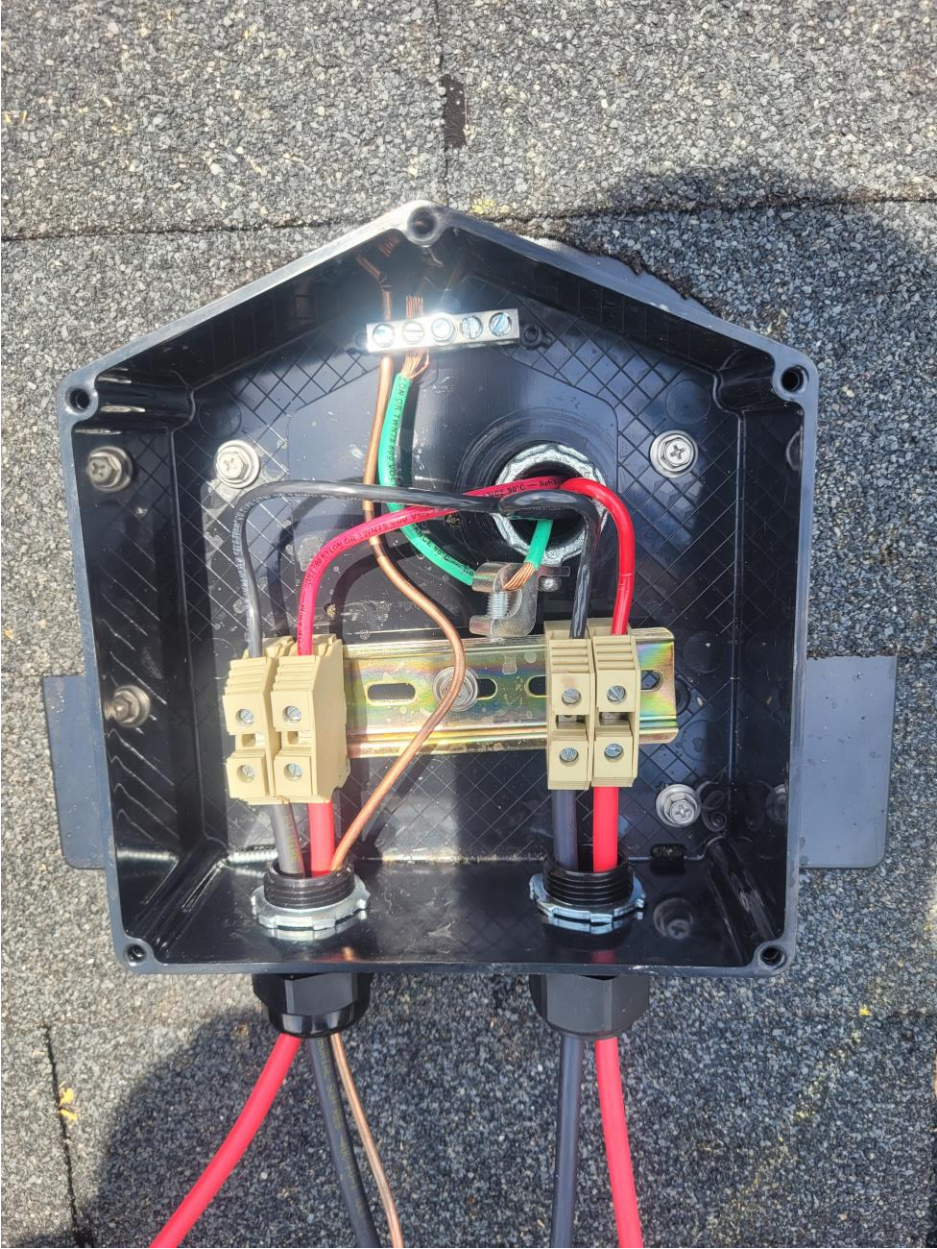


Menu



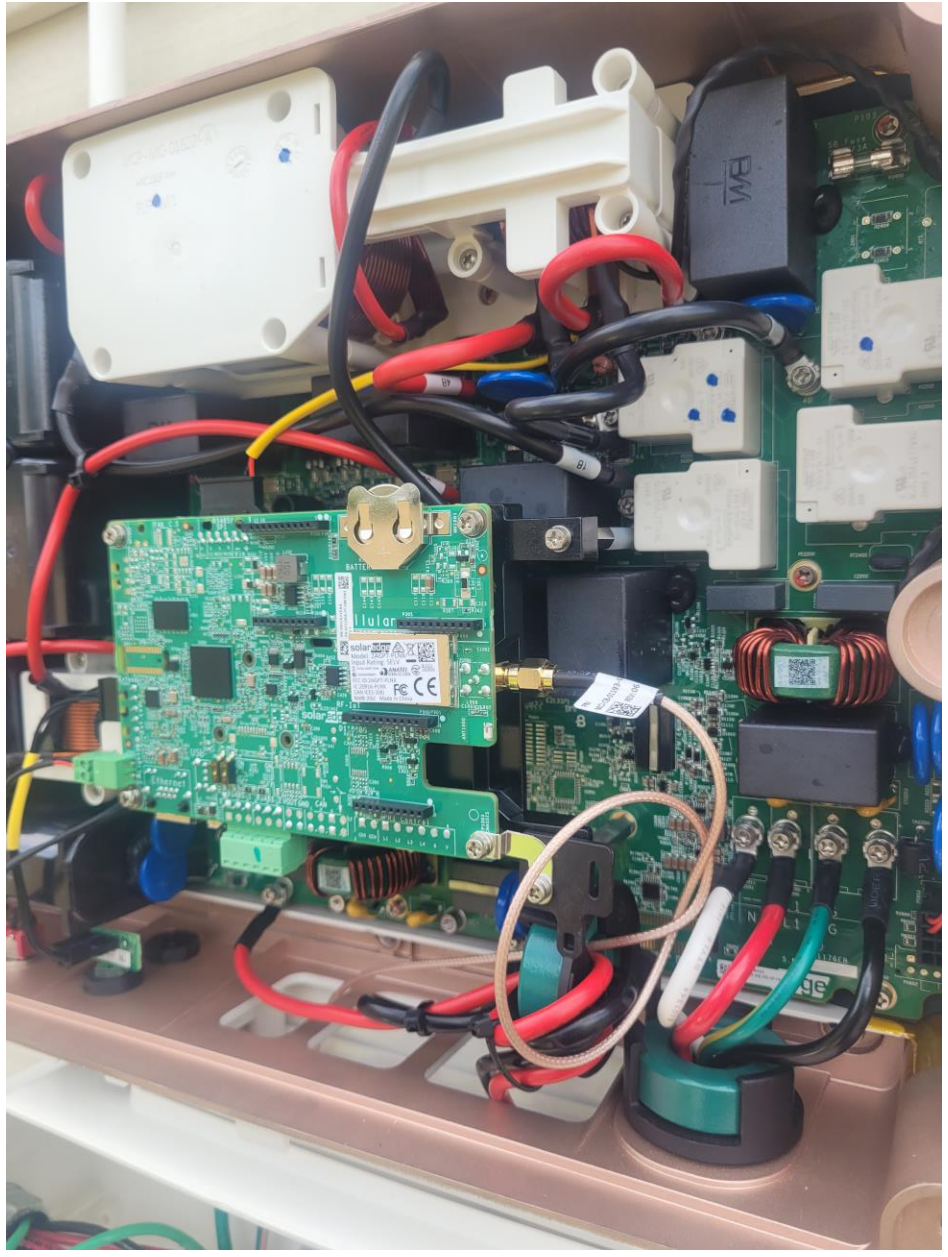
OK





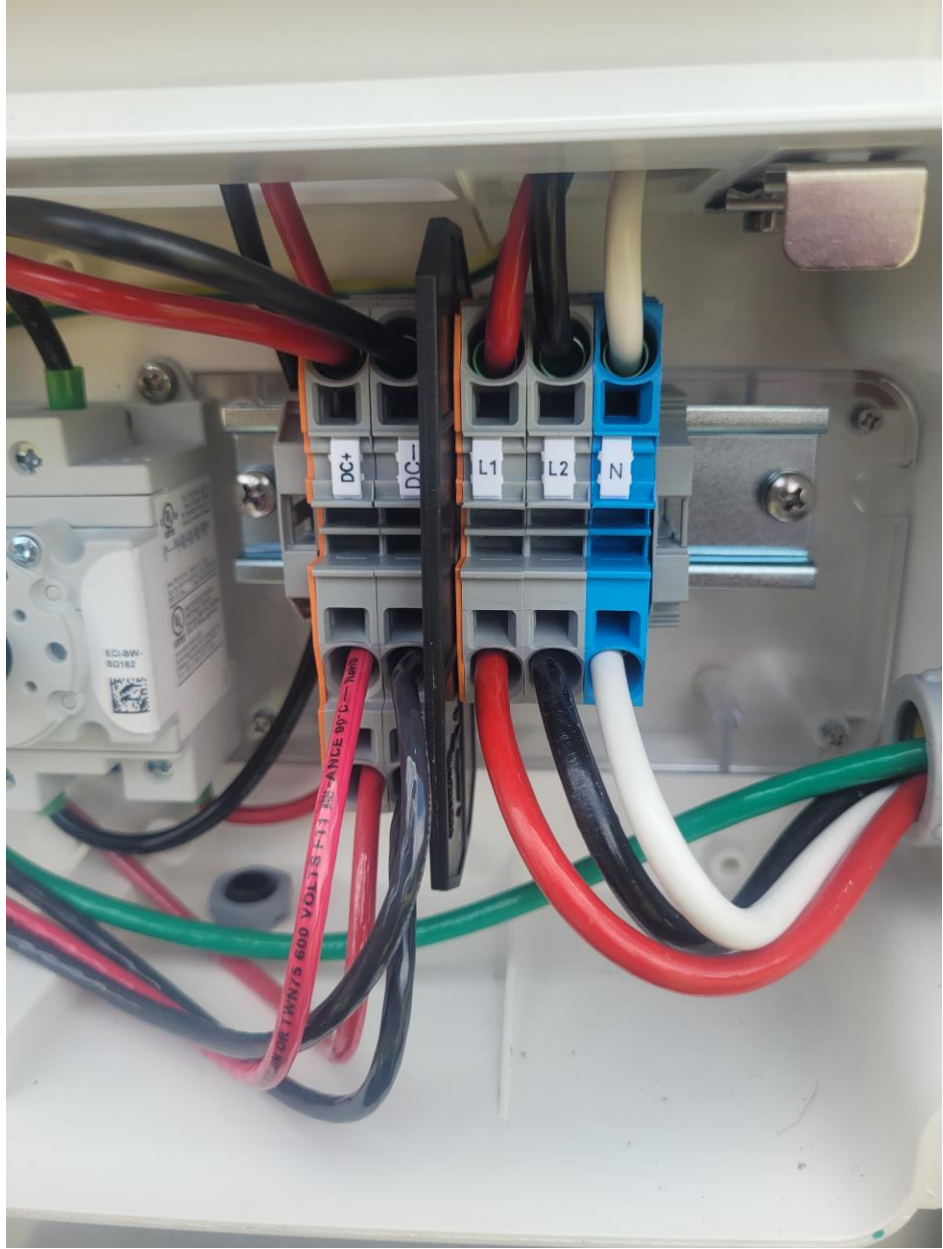


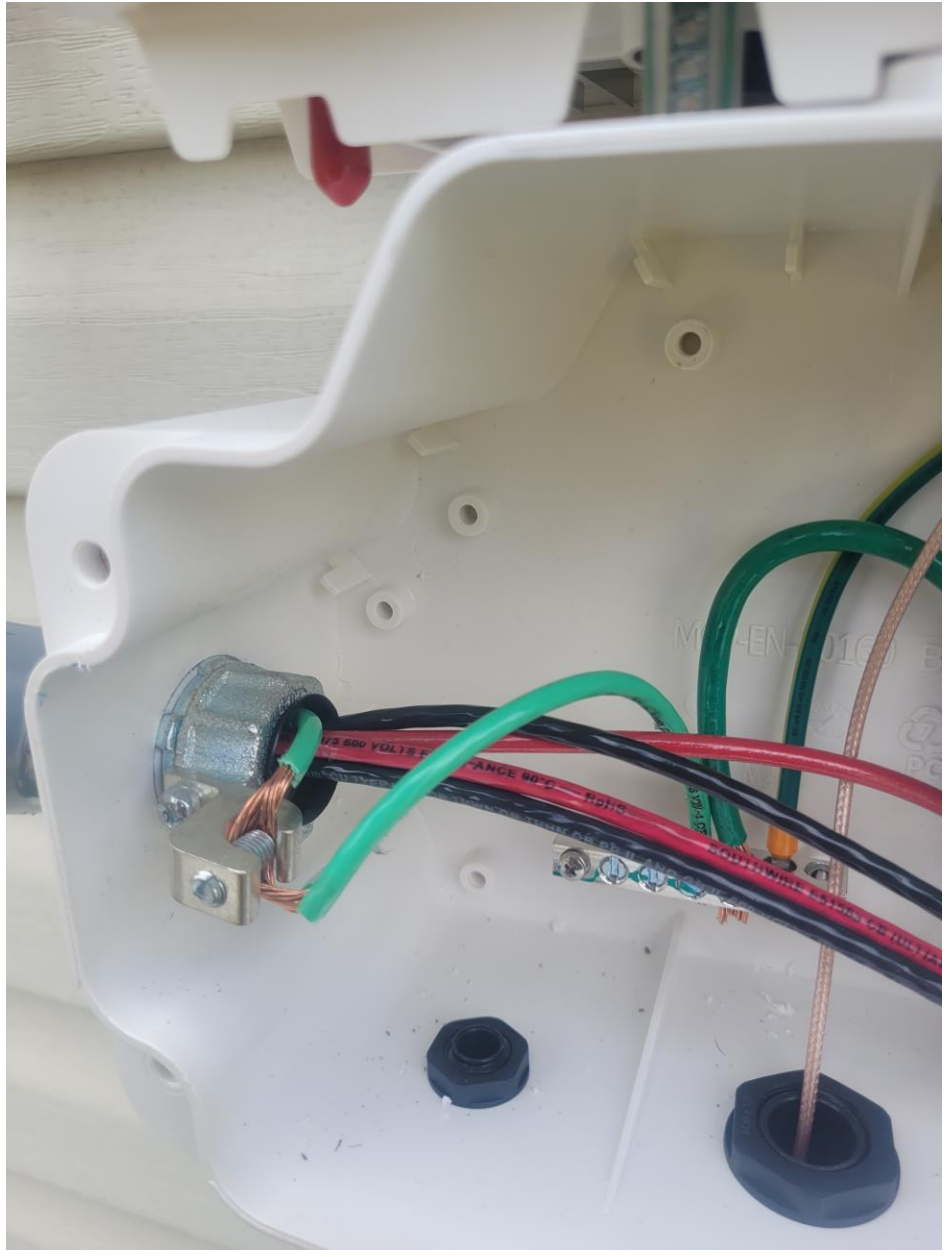
we will put label on when  
when we get label make  
broke on us. It will be o  
by the inspection

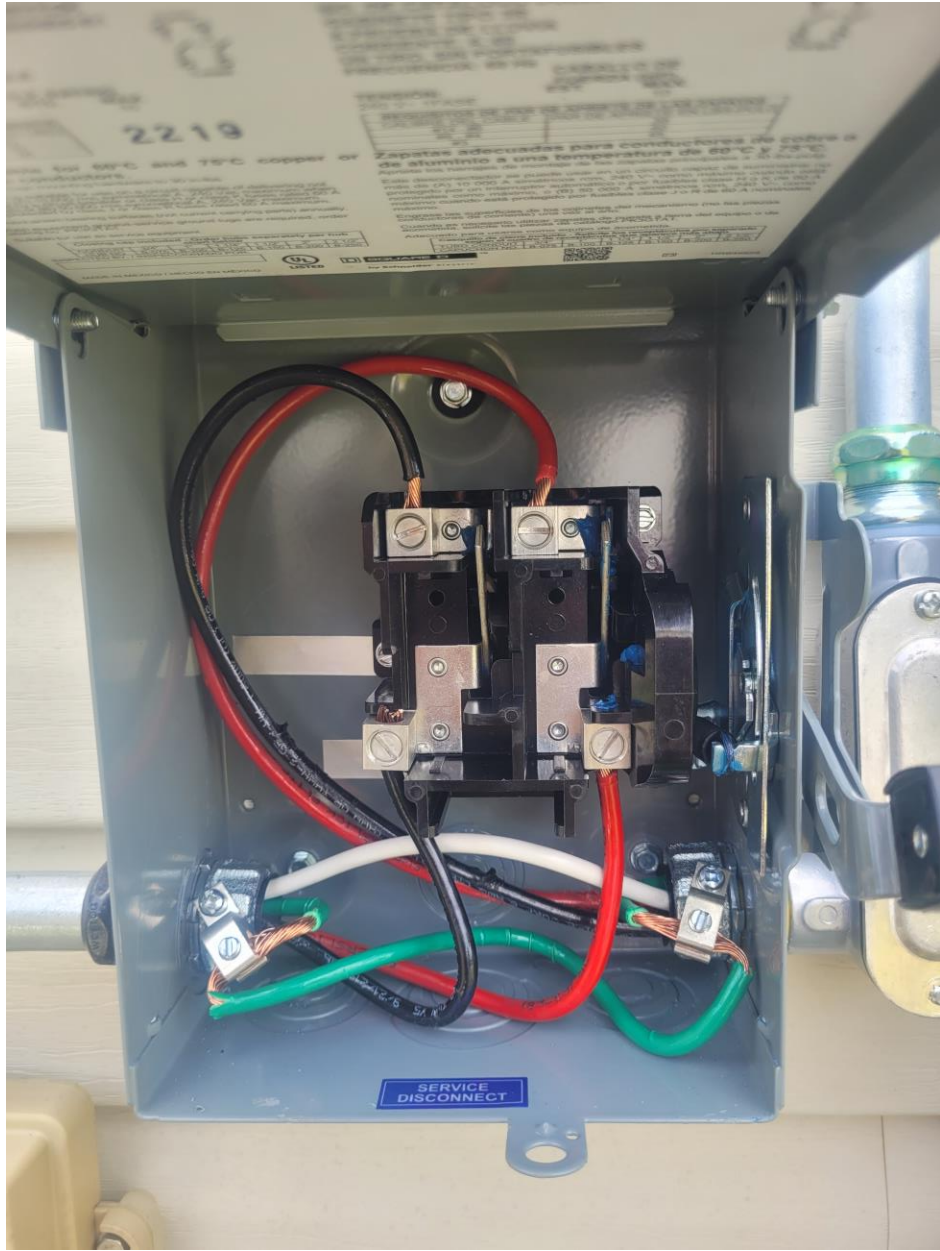














**PHOTOVOLTAIC AC DISCONNECT**  
RATED AC OUTPUT CURRENT: **750** AMPS  
NOMINAL OPERATING AC VOLTAGE: **30** VOLTS

**SQUARE D®**  
**GENERAL DUTY SAFETY SWITCH**  
**INTERRUPTOR DE SEGURIDAD DE SERVICIO GENERAL**  
60 A  
240 Vac / V~

**⚠ DANGER / PELIGRO**  
HAZARD OF ELECTRIC SHOCK, EXPLOSION, OR ARC FLASH  
PELIGRO DE DESCARGA ELÉCTRICA, EXPLOSIÓN O DESTELLO POR ARQUEO

- Apply appropriate personal protective equipment (PPE) and follow safe electrical work practices. See NFPA 70E.
- This equipment must only be installed and serviced by qualified electrical personnel.
- Never operate energized switch with door open. Keep door fastened.
- Turn off switch before removing or installing fuses or making load side connections.
- Always use a properly rated voltage sensing device at all line and load fuse tags to confirm switch is off.
- Turn off power supplying switch before doing any other work on or inside switch.
- Do not use renewable link fuses in fused switches.
- Failure to follow these instructions will result in death or serious injury.
- To lock out switch, please padlock hasp through hole in lockplate and hole in handle.
- Utilice equipo de protección personal apropiado y siga las prácticas de seguridad eléctrica establecidas por su Compañía (consulte la norma NFPA 70E).
- Solamente el personal eléctrico especializado deberá instalar y proporcionar servicio de mantenimiento a este equipo.
- Nunca haga funcionar el interruptor con la puerta abierta cuando esté energizado. Mantenga la puerta asegurada.
- Desenergice el interruptor antes de instalar fusibles o de hacer conexiones en el lado de carga.
- Siempre utilice un dispositivo de testeo nominal adecuado en los cables para de los lados de carga y línea para confirmar la desenergización del interruptor.
- Desenergice el interruptor antes de cualquier otro trabajo en el interruptor.
- No utilice fusibles de enlace renovables en los interruptores de fusible.
- El incumplimiento de estas precauciones podrá causar la muerte o lesiones.
- Para bloquear el interruptor, pase la llave del candado por el agujero en la placa de bloqueo y el agujero en la parte superior de la manija.

**⚠ WARNING**  
**ELECTRICAL SHOCK HAZARD**  
TERMINALS ON THE LINE AND LOAD SIDES MAY BE ENERGIZED IN THE OPEN POSITION

**MAIN PHOTOVOLTAIC SYSTEM AC DISCONNECT**

596-03942

596-03942

MAXIMUM VOLTAGE  
MAXIMUM CIRCUIT CURRENT  
MAX RATED OUTPUT CURRENT OF  
THE CHARGE CONTROLLER  
OR DC-TO-DC CONVERTER  
(IF INSTALLED)

480  
16.5

596-03942



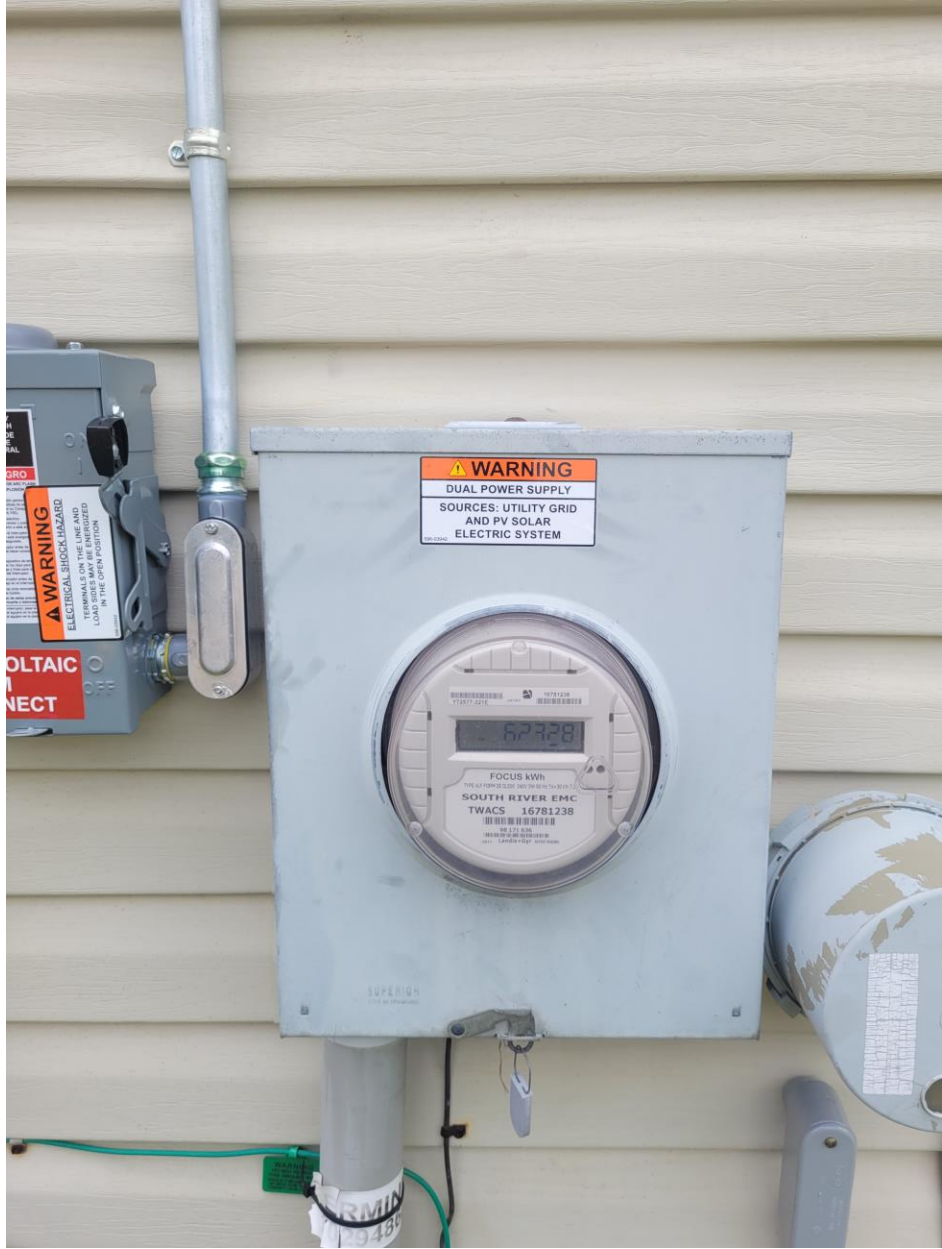












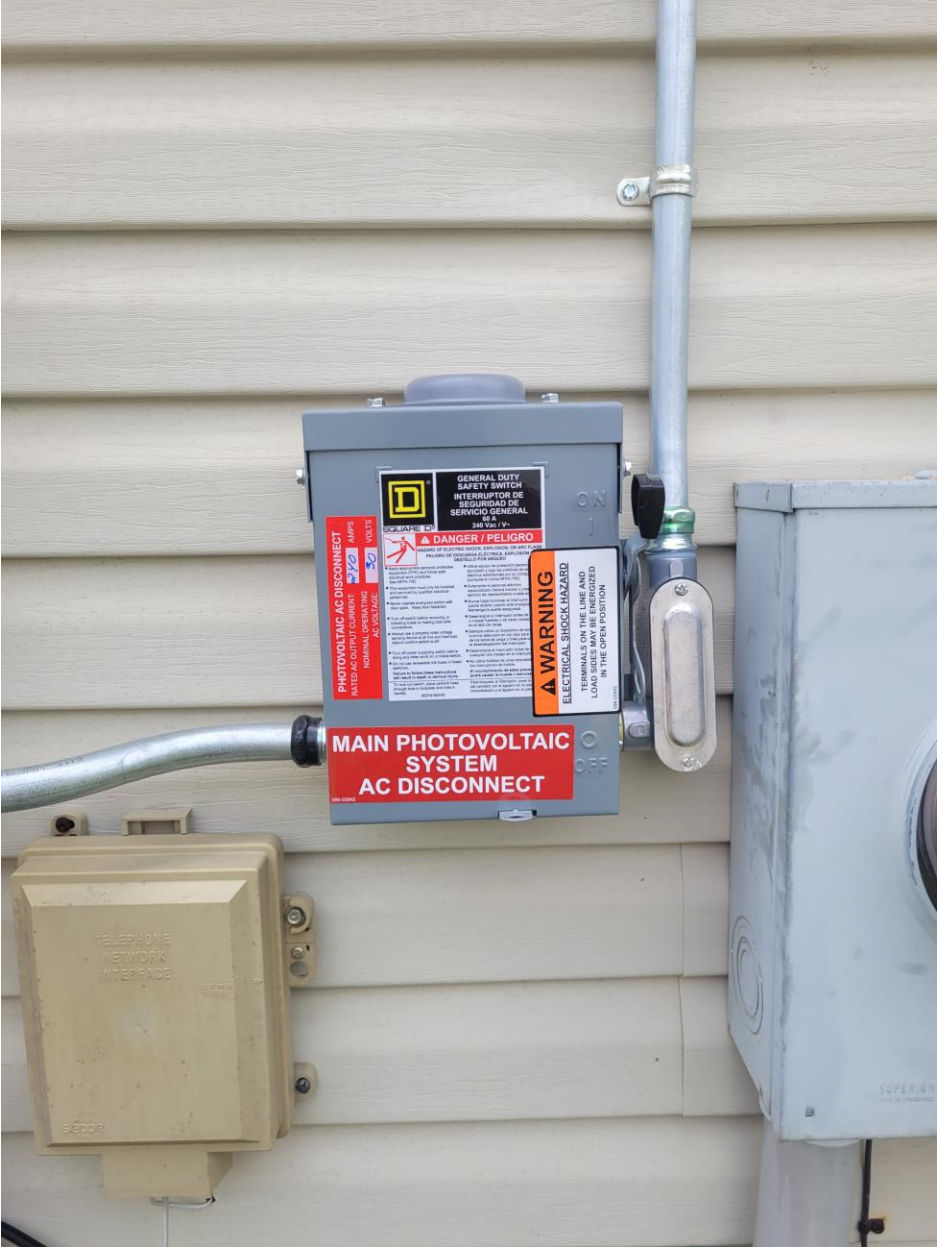
**WARNING**  
DUAL POWER SUPPLY  
SOURCES: UTILITY GRID  
AND PV SOLAR  
ELECTRIC SYSTEM

**WARNING**  
ELECTRICAL SHOCK HAZARD  
TERMINALS ON THE LINE AND  
LOADS SERIES MAY BE ENERGIZED  
IN THE OPEN POSITION

**POLTAIC**  
**CONNECT**

62728  
FOCUS kWh  
SOUTH RIVER EMC  
TWACS 16781238

RMIN  
2948





**SOLAR PV SYSTEM EQUIPPED WITH RAPID SHUTDOWN**

TURN RAPID SHUTDOWN SWITCH TO THE "OFF" POSITION TO SHUT DOWN CONDUCTORS OUTSIDE THE ARRAY. CONDUCTORS WITHIN ARRAY REMAIN ENERGIZED IN SUNLIGHT



MAXIMUM VOLTAGE  
MAXIMUM CIRCUIT CURRENT  
MAX RATED OUTPUT CURRENT OF THE CHARGE CONTROLLER OR DC-TO-DC CONVERTER (IF INSTALLED)  
120  
16.8

solar**edge** HD wave

OFF ON

solar**edge**

TELEPH  
NETWO  
INTERE



**solarEdge** SE6000H-US  
Grid Support Utility Interactive  
Non-Isolated Photovoltaic Inverter

Operating Voltage Range 270 - 600VAC  
Max Input Current 37A  
Max Continuous Output Power 16.5kW  
Voltage Min - Nom - Max 5000Wh @ 208V 8000Wh @ 240V  
192 - 208 - 220VAC  
211 - 240 - 240VAC  
Max Continuous Output Current 72A  
Max Output Fault Current 24kA @ 208V 25kA @ 240V  
Max Utility Backfeed Current 72A  
Frequency Min - Max 59.3 - 60.9 - 60.5Hz  
Output Power Factor  $\cos \phi > 0.98$   
Max Ambient Temperature 60°C  
Enclosure IP65 / Type 3N  
WITH integrated ground fault protection per NEC 690.35 (C)  
[UL] Photovoltaic AC-Fault Circuit Protection  
COMPLIES WITH SUPPLEMENTAL IN CONNECTION REQUIREMENTS  
Wi-Fi Password: F723Dyde  
Activation: Wing + yeNU 0w9g szSe Hqz WCHu avY -

WiFi MAC: 84:CB:C5:27:1E:A4  
ZigBee MAC: 

  
Intertek  
4004590

PM: SE6000H-US000BN14  
SN: SJ1122-0740654A2-70  


**solarEdge** 

**PHOTOVOLTAIC RAPID  
SHUTDOWN SYSTEM**

**solarEdge**  740654A2-70

  
E1114750  
CONFORMS TO  
UL1741  
CLASS B  
CLASS 2  
CLASS 1  
CLASS 2  
CLASS 1  
CLASS 2

Copyright © 2015 SolarEdge, Inc. All rights reserved. The information contained herein is the property of SolarEdge, Inc. and is confidential. It is intended for use only by authorized personnel. All other rights reserved. Please refer to the user manual for more information. Made in China.

