

Hooker 6.935 ku

P2



**⚠ WARNING**  
THIS EQUIPMENT FED BY  
MULTIPLE SOURCES:  
TOTAL RATING OF ALL OVERCURRENT  
DEVICES EXCLUDING MAIN POWER  
SUPPLY SHALL NOT EXCEED  
AMPACITY OF BUSBAR

596-03942



Natasha Hooker 6.935kw  
S1-9  
S2-10





V53210B250416G

**URECO** Photovoltaic Module  
F6M365E7G-BB

Module Type:	F6M365E7G-BB
Maximum Power(Pmp):	365W
Open Circuit Voltage(Voc):	42.7(±0.3%)
Short Circuit Current(Isc):	11.41(±0.3%)
Maximum Power Voltage(Vmp):	34.2V
Maximum Power Current(Imp):	10.68A
Maximum Power Current(Imp):	1000V
Max System Voltage:	670V
Tolerance of Power:	0~±1%
Power Sorting:	30A
Series Fuse Rating:	15A
Dimensions:	1752×1048×35(mm)
Weight:	19.8kg
Standard Test Condition:	1000W/m <sup>2</sup> , 25°C, AM1.5
IV module classification:	Type 2 For USA only Class C For Canada only

United Renewable Energy Co., Ltd.  
P. O. Box 104 #2, Yunnan Science Park, Hecchi, 650714, Yunnan, P. R. C.



Natasha

S1-9

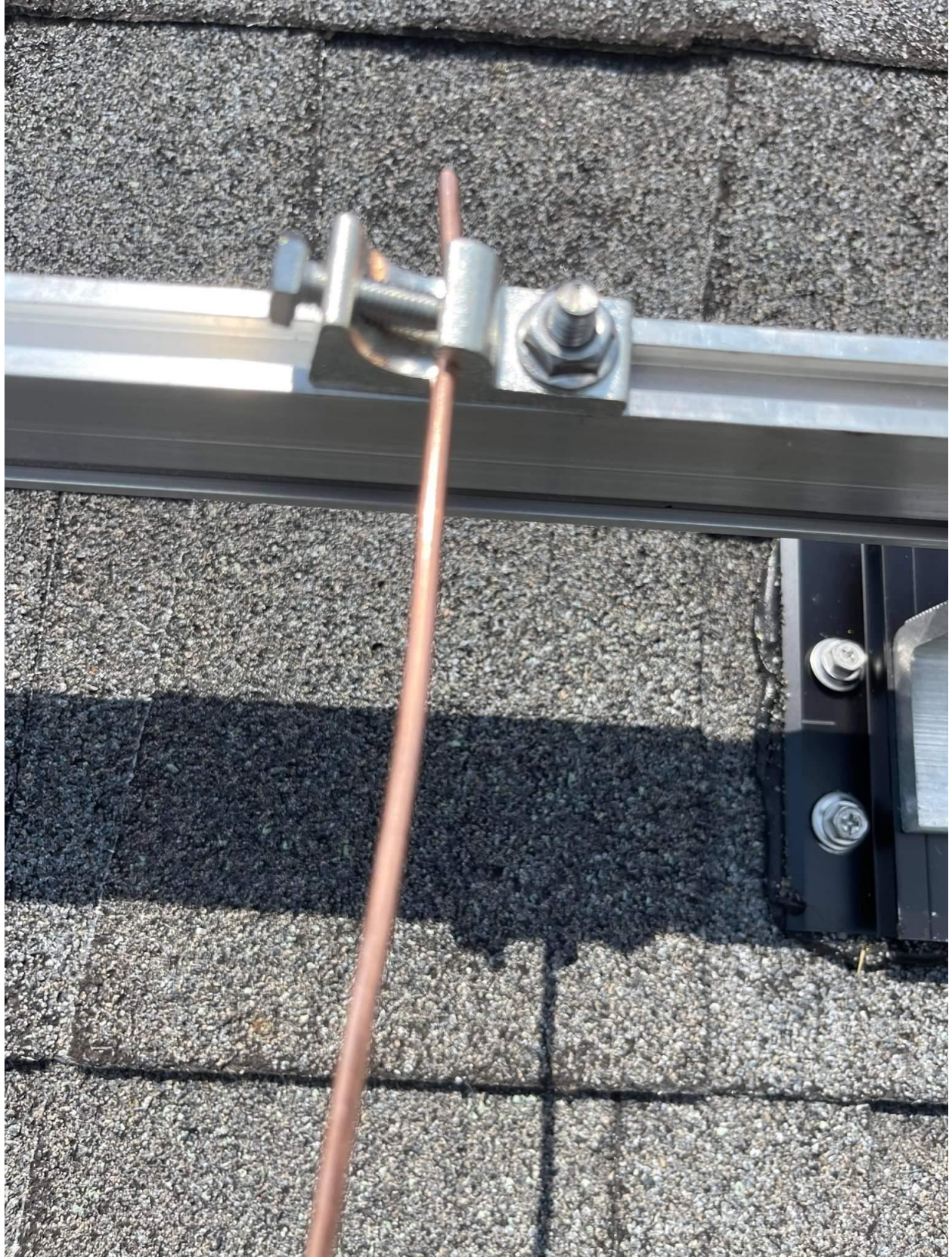
S2-10

PI



NI





5:21



Grid Monitoring Completed. ✕

Pairing Completed. ✕



**solar**edge  
SN 730BB743-78



### Summary



Power  
**639 W**



Voltage  
**246 Vac**



Frequency  
**60 Hz**

P\_OK: 19 of 19  
**Optimizers Communicating**

Server Comm. i  
**No cable  
Ethernet**

Status  
**Production**

Power Limit  
**5 kW**

Switch is  
**On**

Cos Phi  
**0.99**

Q  
**87 VAR**

Country  
**US 240V**

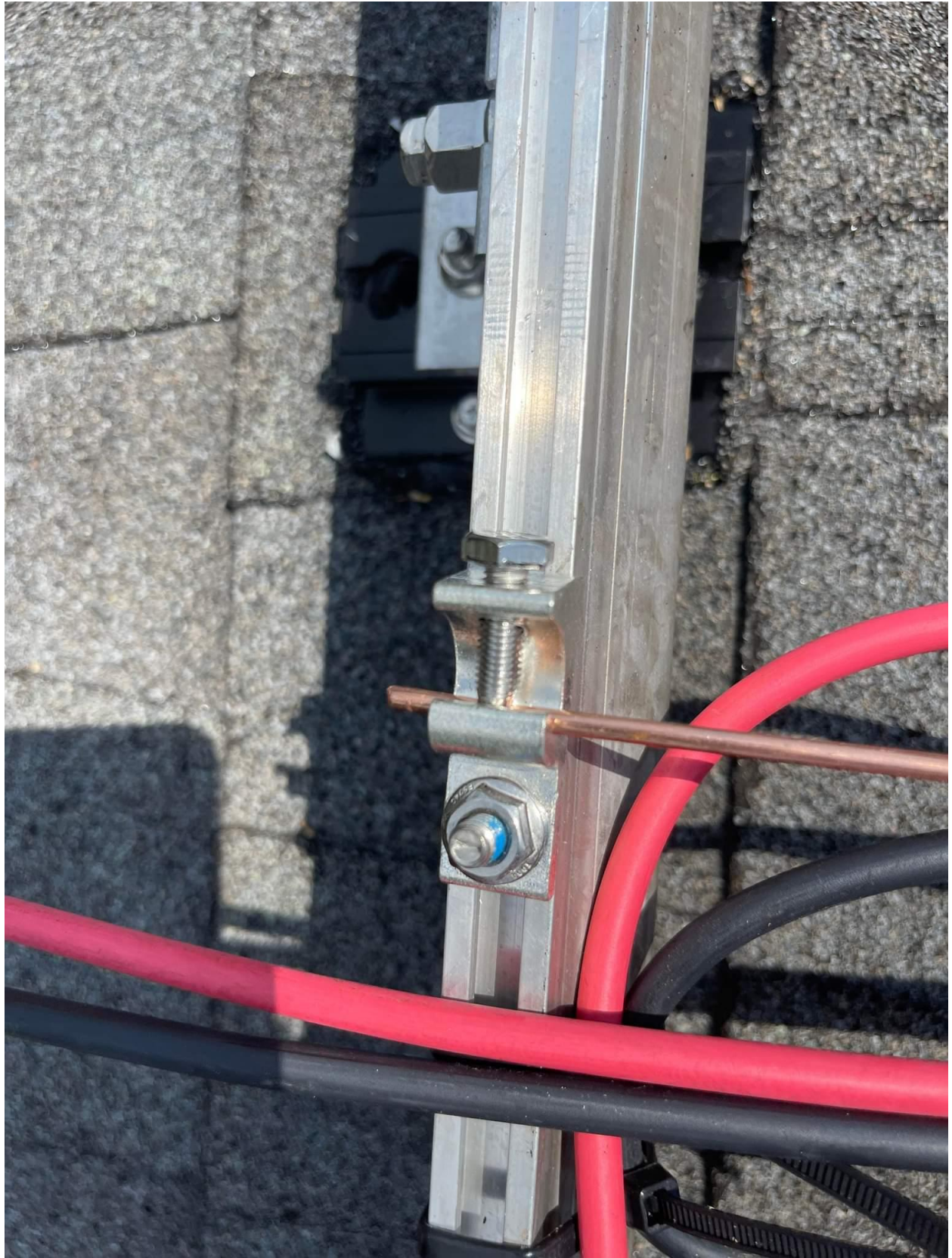
DC Voltage  
**415 Vdc**

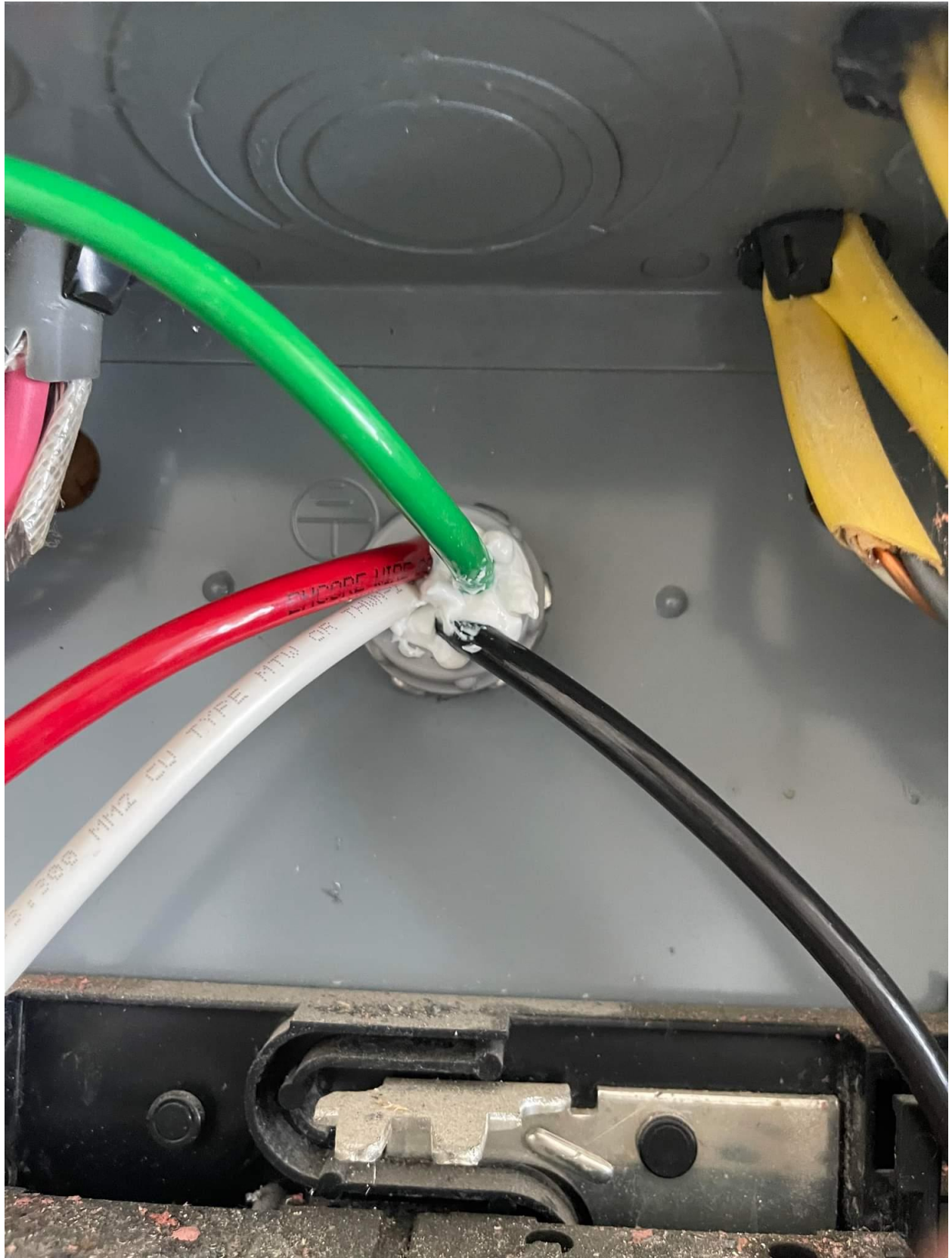
Isolation  
11000 VDC

Temp.  
117.5

Disconnect from device









VS32108250416G



Photovoltaic Module

Module Type: F6M365E7G-BB

Maximum Power(Pmpp):	365W
Open Circuit Voltage(Voc):	40.7V±3%
Short Circuit Current(Isc):	11.43A±3%
Maximum Power Voltage(Vmpp):	34.2V
Maximum Power Current(Imp):	10.68A
Max System Voltage:	1000V
Tolerance of Pmpp:	±3%
Power Sorting:	0~+5W
Series Fuse Rating:	20A
Dimension:	1762×1048×35(mm)
Weight:	19.6kg
Standard Test Condition:	1000W/m <sup>2</sup> , 25°C, AM1.5
PV module classification:	Type 2(For USA only) Class C(For Canada only)



See Installation Instructions for  
Installation Requirements to  
Achieve a Specified System Fire  
Class Rating with this Product.



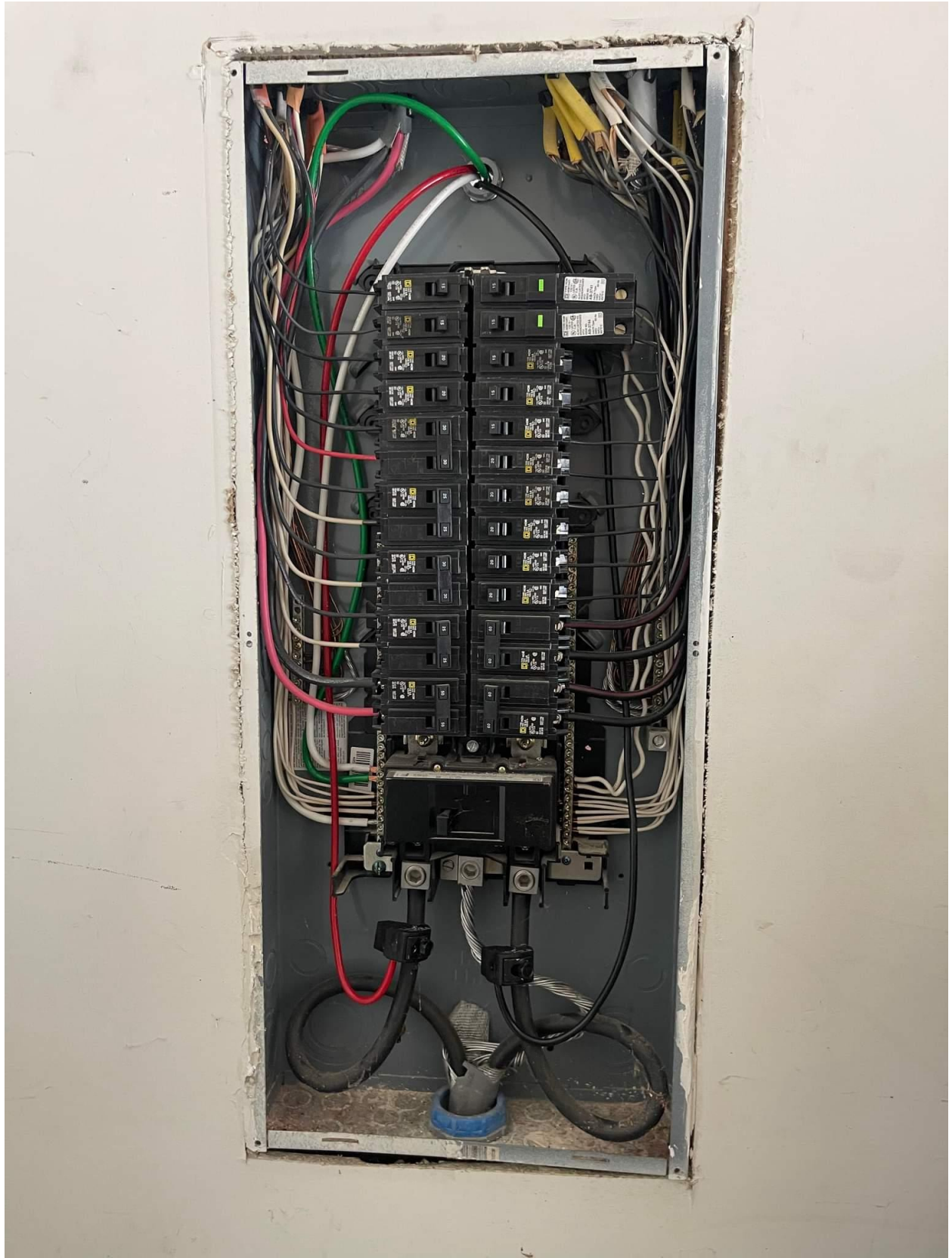
**WARNING**  
Avertissement  
Hazardous Electricity Can shock,  
burn or cause death. Do not  
touch Terminals.  
Électricité dangereuse peut le faire  
Choc, brûlures ou décès. Ne touchez  
pas le terminal.



United Renewable Energy Co., Ltd

7, Li-Hsin 3rd Rd., Hsinchu Science Park, Hsinchu, 30078, Taiwan, R. O. C

Module Assembly: VN  
<http://www.urecorp.com/>













MAXIMUM VOLTAGE 480  
MAXIMUM CIRCUIT CURRENT 18.5  
MAX RATED OUTPUT CURRENT OF THE CHARGE CONTROLLER OR DC TO DC CONVERTER (IF INSTALLED)

**WARNING**  
ELECTRIC SHOCK HAZARD  
TERMINALS ON THE LINE AND LOAD SIDES MAY BE ENERGIZED IN THE OPEN POSITION

solar edge

HD wave

**SOLAR PV SYSTEM EQUIPPED WITH RAPID SHUTDOWN**

TURN RAPID SHUTDOWN SWITCH TO THE 'OFF' POSITION TO SHUT DOWN CONDUCTORS OUTSIDE THE ARRAY CONDUCTORS WITHIN THE ARRAY REMAIN ENERGIZED IN SUNLIGHT

**RAPID SHUTDOWN SWITCH FOR SOLAR PV SYSTEM**

solar edge









FIL LISTED  
CONFORME TO  
ANSI/UL144  
CERTIFIED TO  
CAN/CSA  
C22.2 NO 107

ETL  
Intertek  
4004590

Contains FCC ID: 2A0PPT-P14X, IC: 20916-P14X. The enclosed device complies with part 15 of the FCC Rules. Operation is subject to the following two conditions:  
1) This device may not cause harmful interference and  
2) This device must accept any interference received, including interference that may cause undesired operation.  
PATENT MARKING NOTICE: www.solaredge.com/fraps/patent Made in Vietnam

**solar edge**  
DC Safety Switch

500 V  
16.5 A  
-40°C to +60°C  
Type 3R

Max DC to Voltage:  
Max DC Current:  
Ambient Temperature:  
Enclosure NEMA Rating:  
PHOTOVOLTAIC RAPID SHUTDOWN SYSTEM  
Revenue Grade ANSI C12.20  
Use No. 16 AWG, 75°C-90°C copper wires only.  
WARNING - Hot Surface  
ATTENTION - Surface chaude

DCD-1PH-US-S1H-F-1  
PN: SV0821-121909238-FB  
SN: [Barcode]  
Made in Vietnam

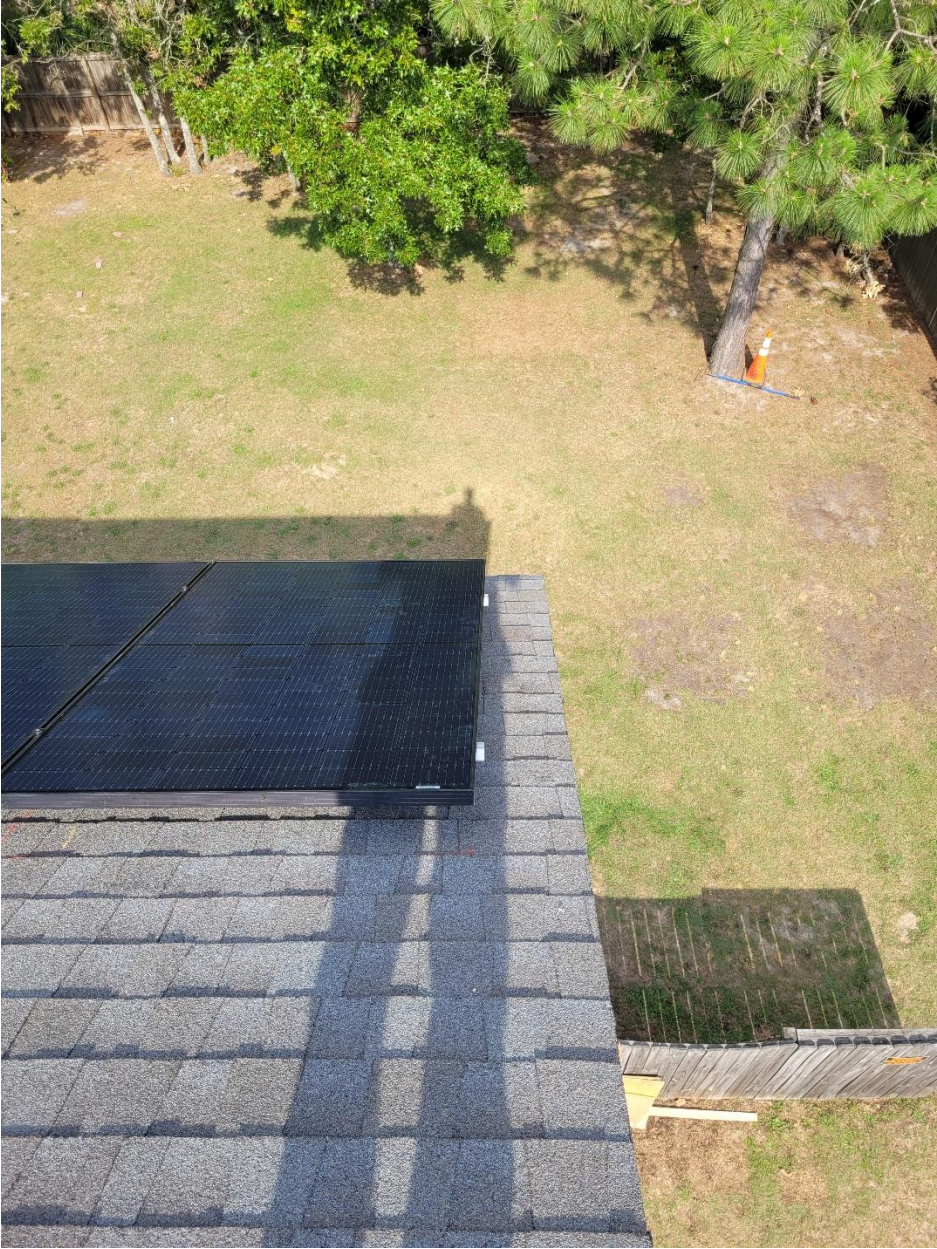










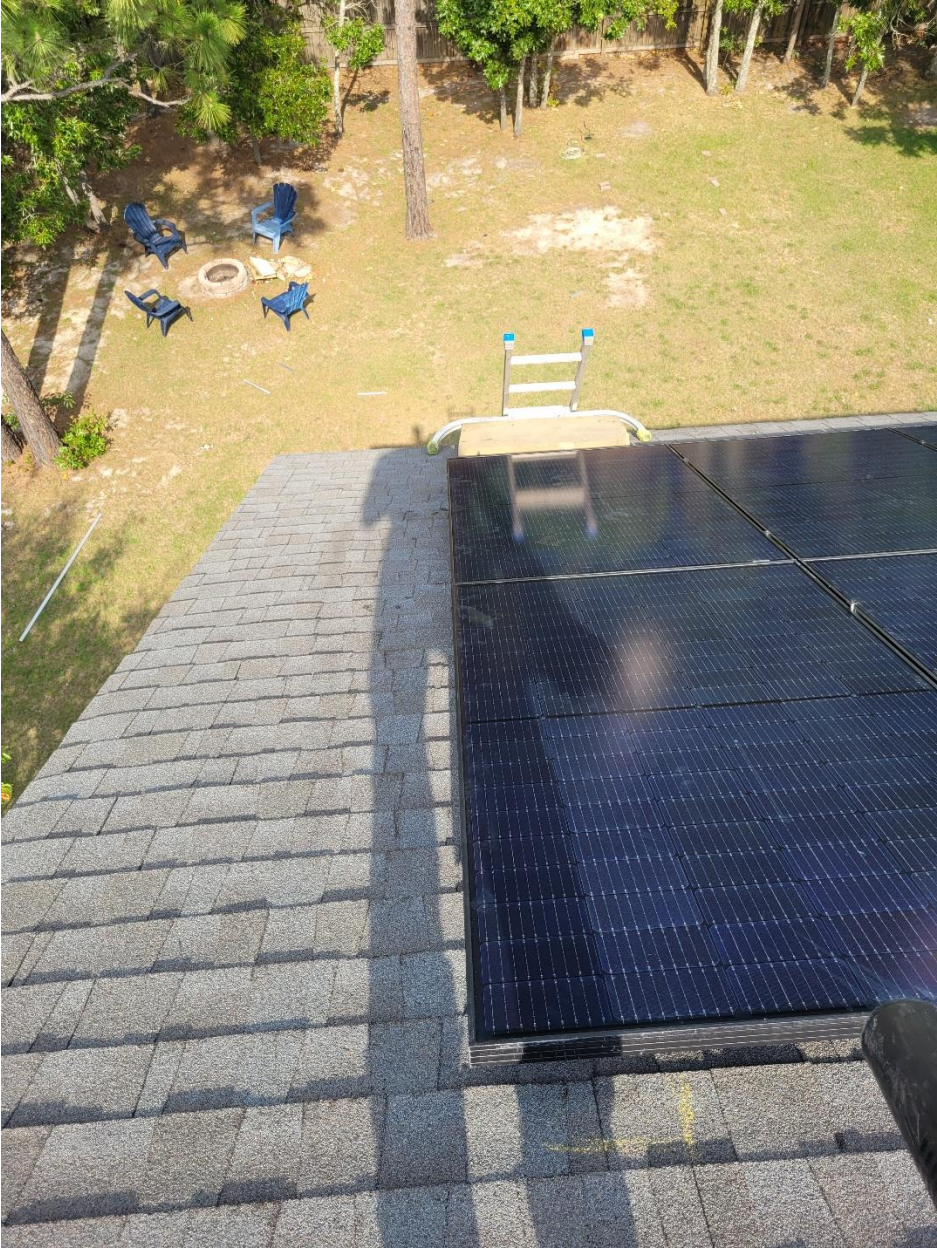










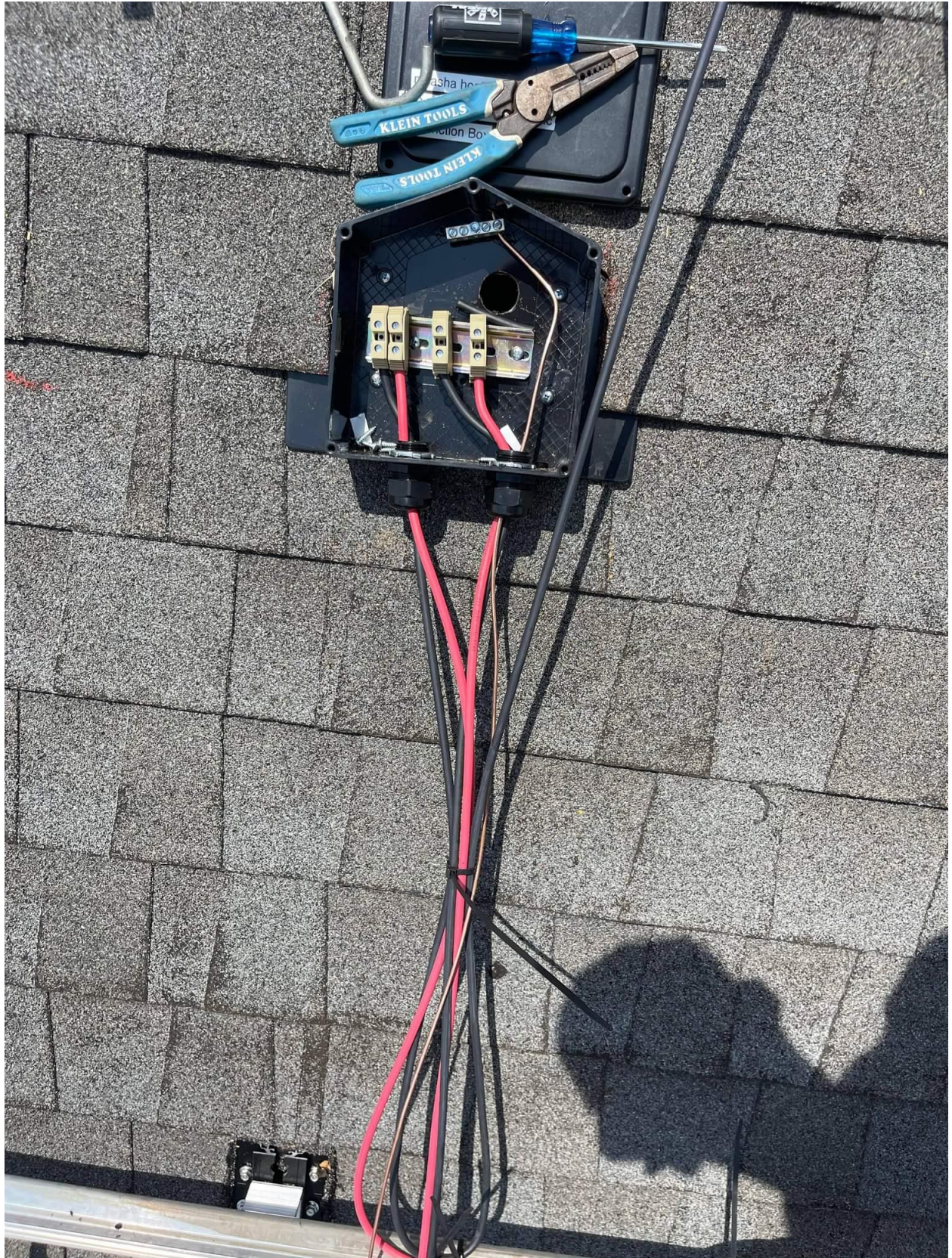
















**WARNING** ELECTRIC SHOCK HAZARD. THE DC CONDUCTORS OF THIS PHOTOVOLTAGE SYSTEM ARE UNGROUNDED, AND MAY BE ENERGIZED.

**AVERTISSEMENT** RISQUE DE CHOC ELECTRIQUE QUAND LE CHAMP PHOTOVOLTAIQUE EST EXPOSE A LA LUMIERE. UNE TENSION CC EST FOURNIE A CET EQUIPEMENT. SURFACES CHAUDES: NE PAS TOUCHER. AFIN DE REDUIRE LES RISQUES DE BRULURES, LE COURANT DE RETOUR INJECTE PAR LE CONVERTISSEUR CA CAS DE DEFALIANCE DANS LE MODULE N'EST TOUJOURS NUL.

**CAUTION** HOT SURFACES-TO REDUCE THE RISK OF BURNS-DO NOT TOUCH. PHOTOVOLTAGE ARRAY IS EXPOSED TO LIGHT. IT SUPPLIES A DC VOLTAGE TO EQUIPMENT. COVER BY MODULE WITH OPAQUE MATERIAL BEFORE CONNECTING OR DISCONNECTING THIS OPTIMIZER DURING FAULT, ZERO CURRENT IS SOURCED INTO DC ARRAY BY CONVERTER.

**Do Not Remove** 156E925-00

FC

156E925-00

156E925-00

156E925-00





# WARNING

THIS EQUIPMENT FED BY  
MULTIPLE SOURCES:  
TOTAL RATING OF ALL OVERCURRENT  
DEVICES EXCLUDING MAIN POWER  
SUPPLY SHALL NOT EXCEED  
AMPACITY OF BUSBAR

596-03942





