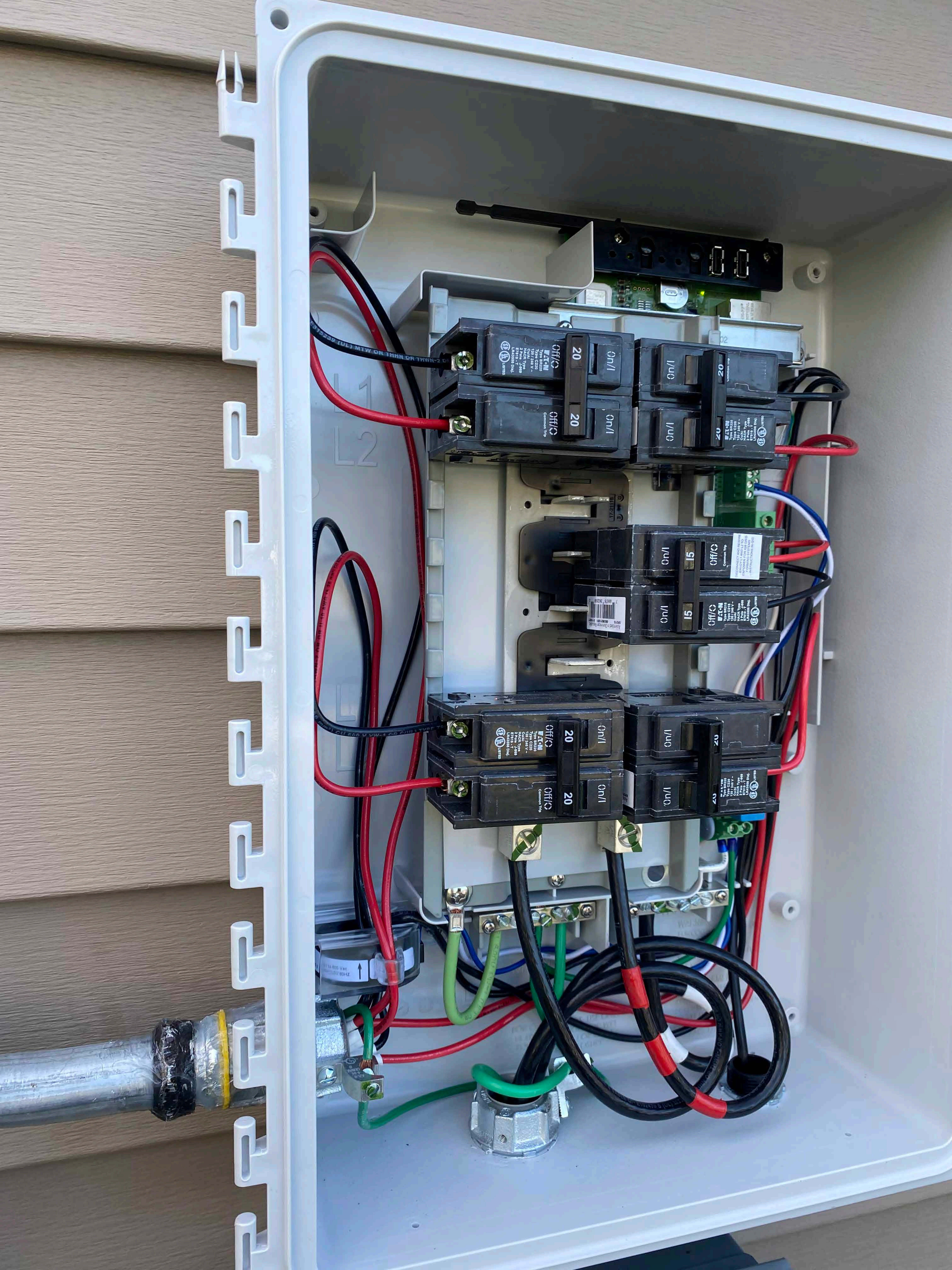




COVER
UL

LISTED BY
UL

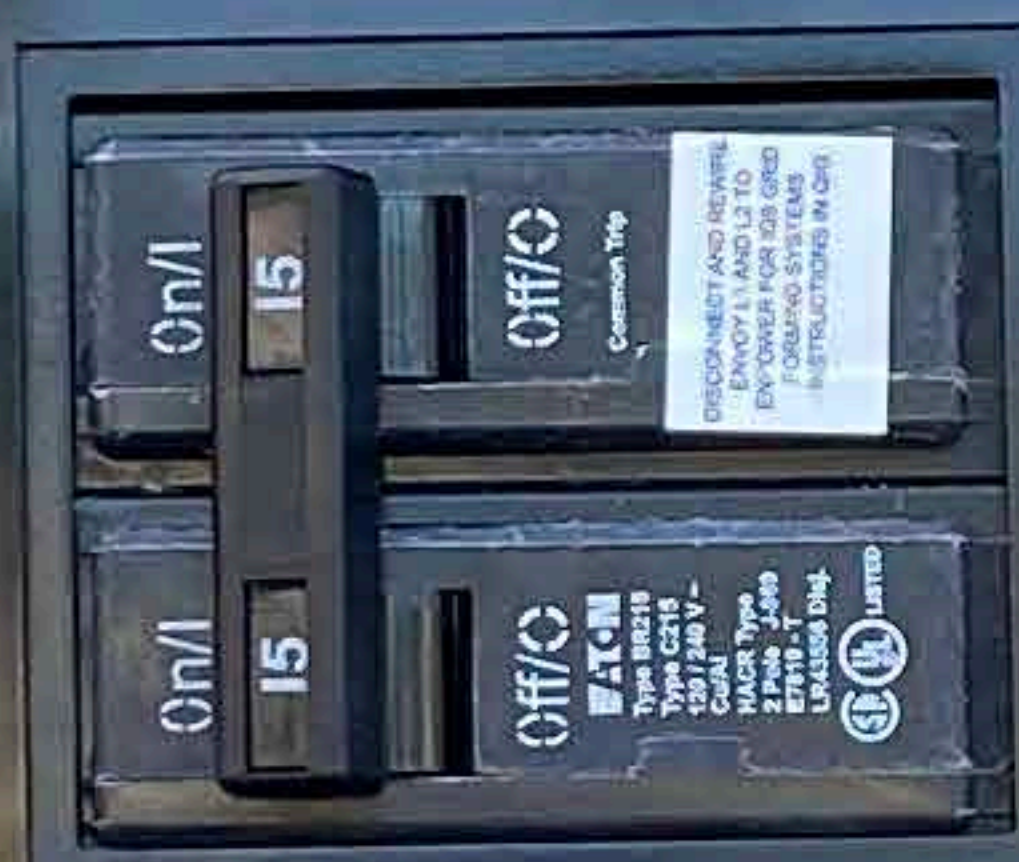


PV SOLAR BREAKER
DO NOT RELOCATE
THIS OVERCURRENT
DEVICE



PV SOLAR BREAKER
DO NOT RELOCATE
THIS OVERCURRENT
DEVICE

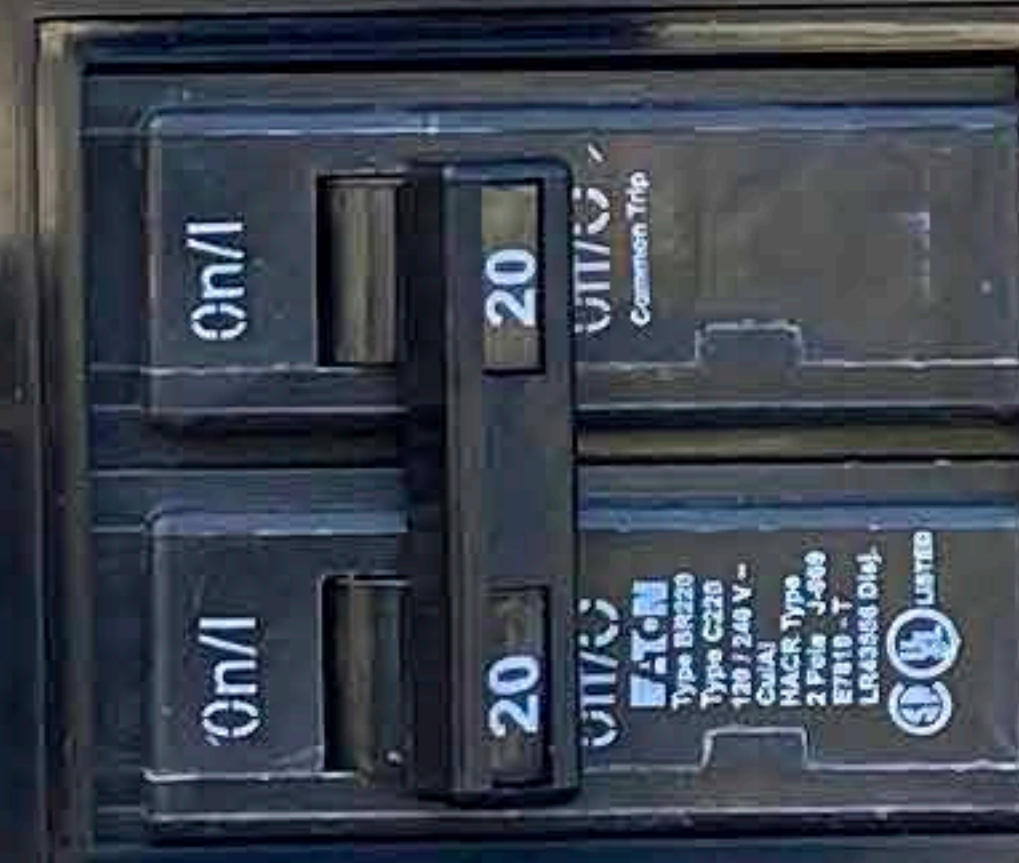
WARNING
FOR IQ8 GRID FORMING SYSTEMS WIRE
THE ENVOY L1 AND L2 TO ENPOWER
AS PER INSTRUCTIONS IN QIG



PV SOLAR BREAKER
DO NOT RELOCATE
THIS OVERCURRENT
DEVICE



PV SOLAR BREAKER
DO NOT RELOCATE
THIS OVERCURRENT
DEVICE



ENPHASE MOBILE CONNECT

WARNING:
RISK OF ELECTRIC SHOCK. DO NOT REMOVE COVER.
NO USER SERVICEABLE PARTS INSIDE.
REFER SERVICING TO QUALIFIED SERVICE PERSONNEL.
WHEN THE PHOTOVOLTAIC ARRAY IS EXPOSED TO LIGHT,
IT SUPPLIES AN AC VOLTAGE TO THIS EQUIPMENT.

AVERTISSEMENT:
RISQUE DE CHOC ÉLECTRIQUE. NE PAS OUVRIR LE COUVERCLE
POUR TOUTE RÉPARATION OU SERVICE D'ENTRETIEN.
CONSULTER UN AGENT SPÉCIALISÉ QUAND LES
PANNEAUX PHOTOVOLTAÏQUES SONT EXPOSÉS
À LA LUMIÈRE. IL FOURNIT UNE TENSION AC À CET APPAREIL.

WARNING: HIGH VOLTAGE.
AVERTISSEMENT: HAUTE TENSION



WARNING
DUAL POWER SUPPLY
SOURCES: UTILITY GRID AND
PV SOLAR ELECTRIC SYSTEM



LEVEL 2

**SOLAR PV SYSTEM EQUIPPED
WITH RAPID SHUTDOWN**

TURN RATED SHUTDOWN
SWITCH TO THE
"OFF" POSITION TO
SHUT DOWN PV SYSTEM
AND REDUCE
SHOCK HAZARD
IN THE AREA

WARNING
ELECTRIC SHOCK HAZARD
TERMINALS ON THE LINE AND
LOAD SIDES MAY BE ENERGIZED
IN THE OPEN POSITION

ENPHASE

**PV SYSTEM
DISCONNECT**

WARNING
PHOTOVOLTIC SYSTEM
COMBINER PANEL
DO NOT ADD LOADS

WARNING
ELECTRIC SHOCK HAZARD
TERMINALS ON THE LINE AND
LOAD SIDES MAY BE ENERGIZED
IN THE OPEN POSITION

WARNING
THIS EQUIPMENT FED BY MULTIPLE
SOURCES. TOTAL RATING OF ALL
OVERCURRENT DEVICES, EXCLUDING
MAIN SUPPLY OVERCURRENT
DEVICE, SHALL NOT EXCEED
CAPACITY OF BUSBAR.

WARNING
DUAL POWER SUPPLY
SOURCES: UTILITY GRID AND
PV SOLAR ELECTRIC SYSTEM

**RAPID SHUTDOWN
SWITCH FOR
SOLAR PV SYSTEM**

DANGER / PELIGRO

**PHOTOVOLTIC SYSTEM
AC DISCONNECT**

OPERATING VOLTAGE: 240V VOLTS
OPERATING CURRENT: 55 AMP



Charter





WARNING
PLY
D

⚠ DANGER
⚡
⚠ PELIGRO
⚠ WARNING
⚠ ADVERTENCIA

SQUARE D
100 AMP
125°C
100A
125°C

1	Heat
2	
3	
4	
5	
6	Heat
7	Sub Panel
8	
9	A/C
10	
11	Range
12	
13	A/C
14	
15	
16	Dryer
17	
18	
19	Boiler
20	
21	Porch Light
22	
23	Mixer
24	
25	
26	
27	
28	
29	
30	

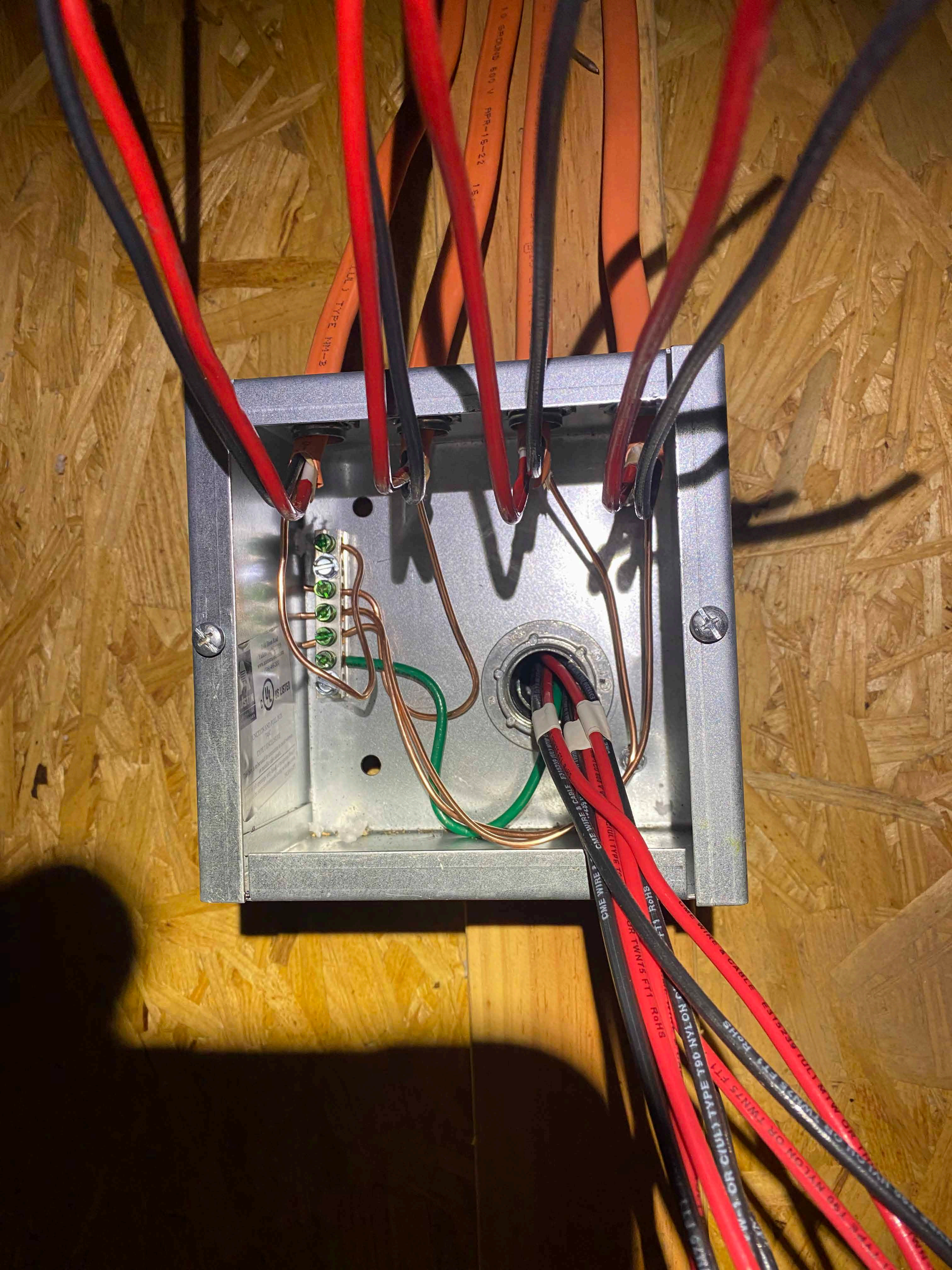


311
Certified Superior
SPACE 1/8 INCH AT
SCARF JOINTS
SELF SPANAS ON
PROFILED EDGES
THIS SIDE DOWN
ESTE LADO ABAJO
MILL 229
CRYSTAL HILL, VA
TECO
TESTED
AS PER
EXPOSURE
7/10 Perf. Cat.
24/16

H 1/2







2100 Hous...
Yadkinville, NC 27051
www.austinelectrical.com
(336) 468-2851

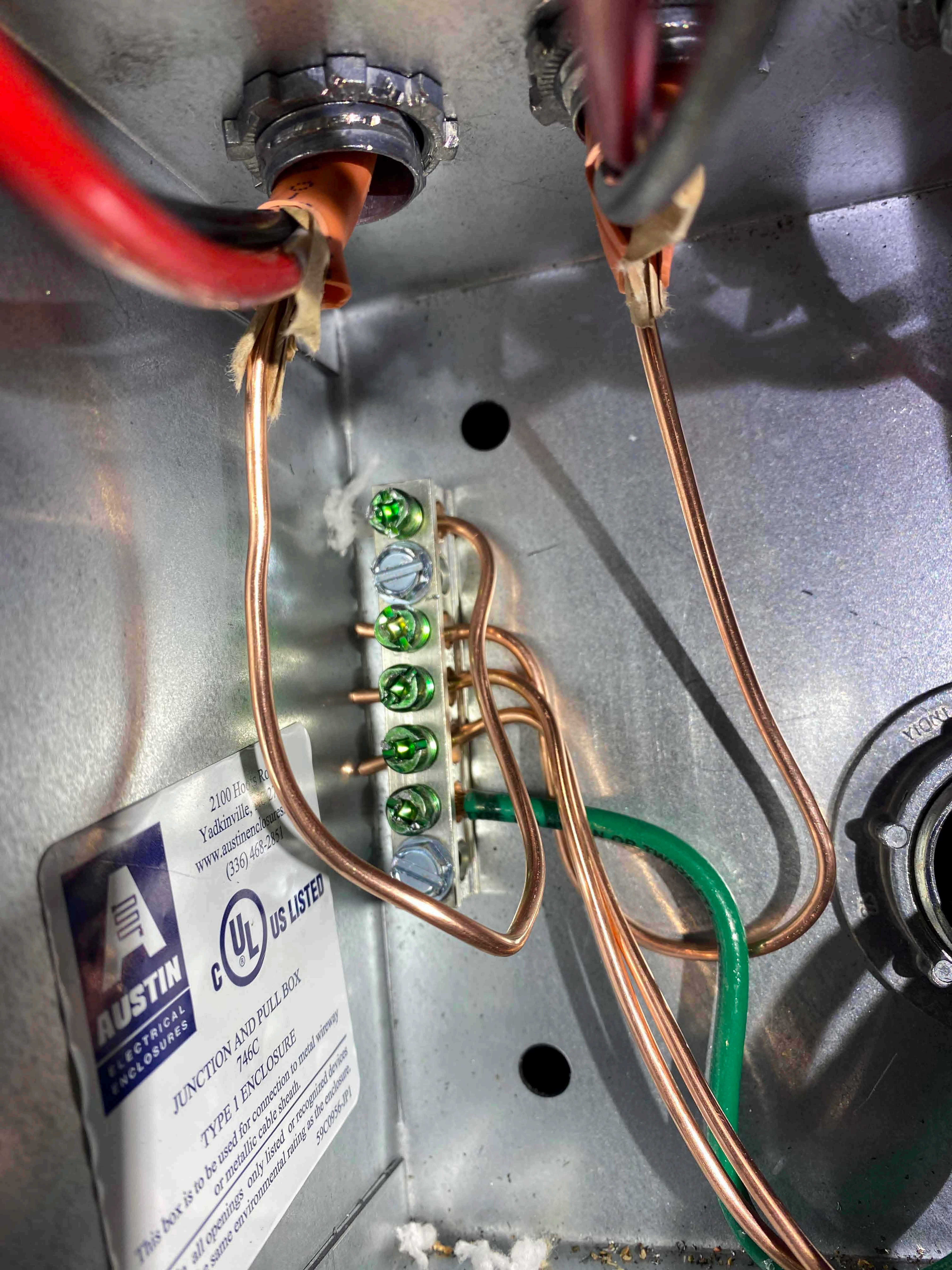
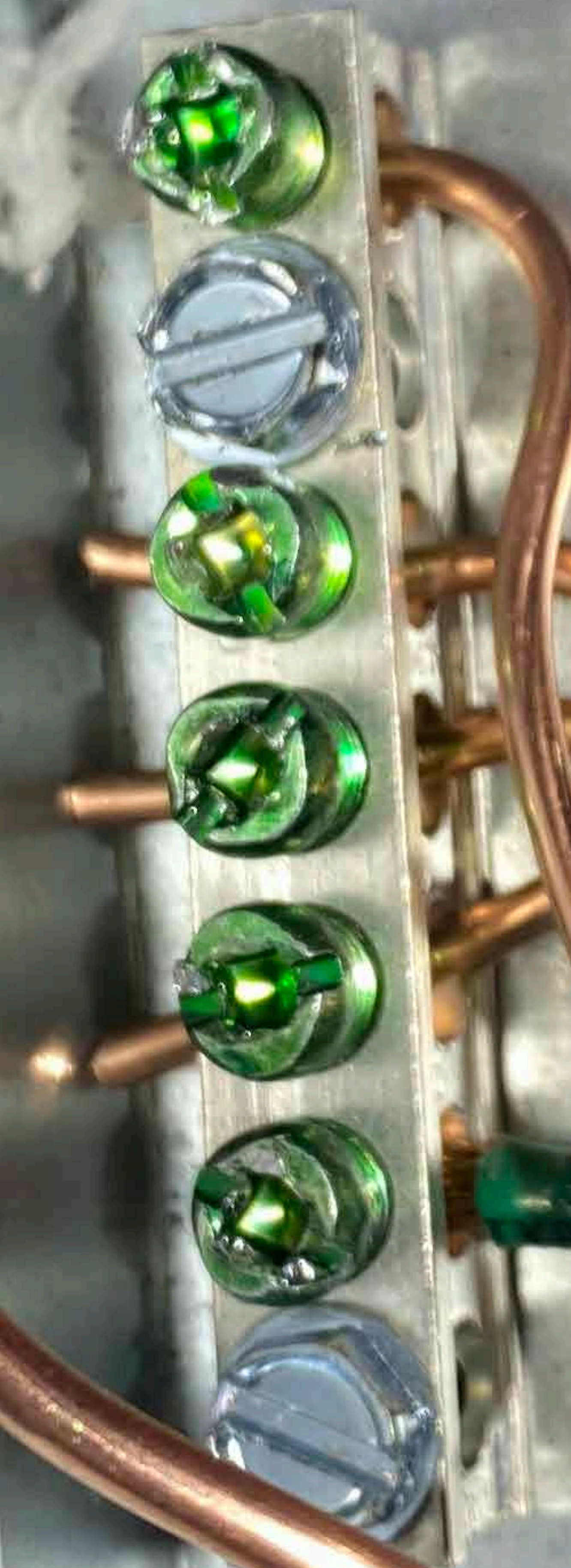
AUSTIN
ELECTRICAL
ENCLOSURES

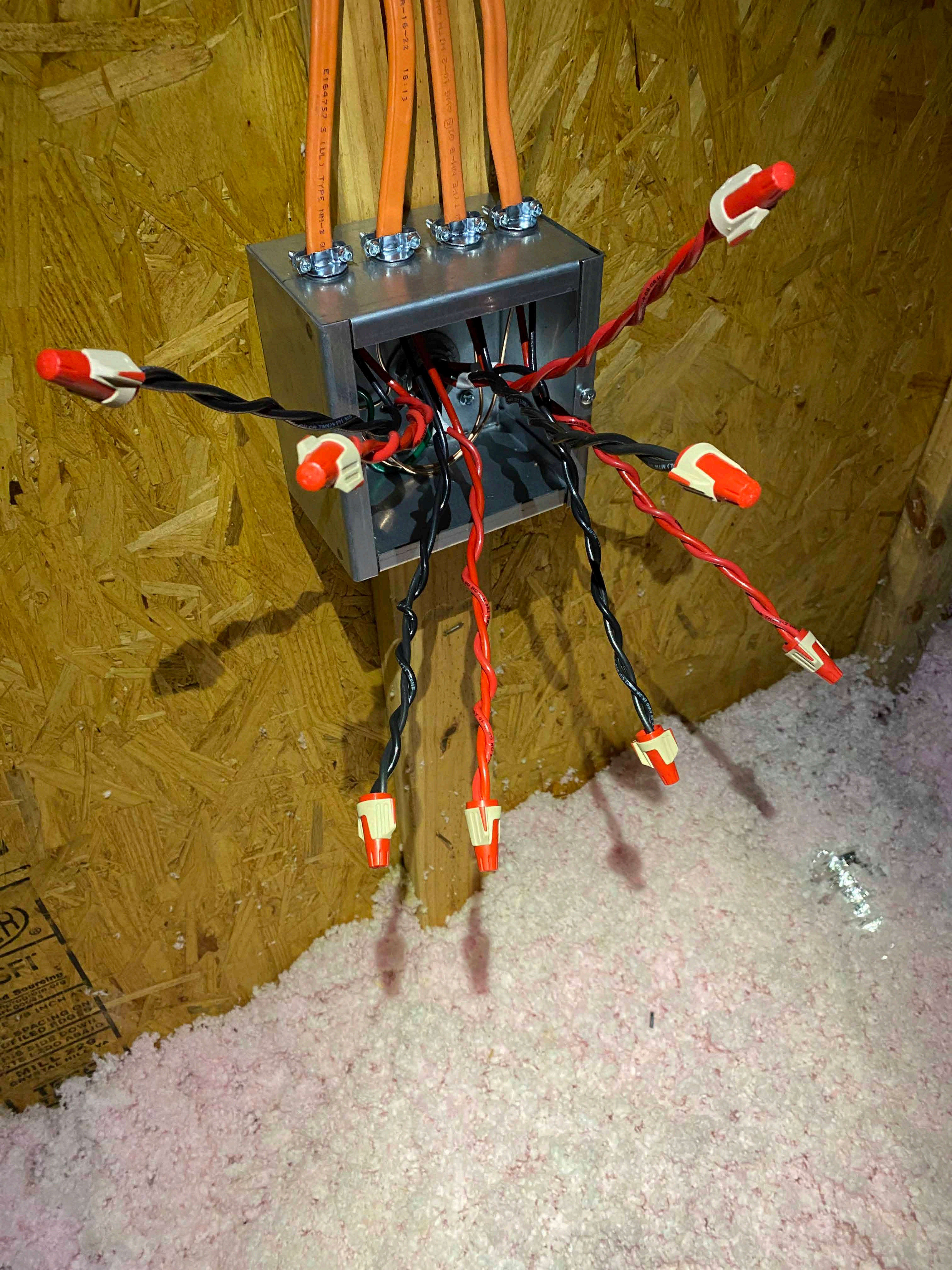
UL US LISTED

JUNCTION AND PULL BOX
746C

*This box is to be used for connection to metal wireway
or metallic cable sheath.*

*all openings only listed or recognized devices
same environmental rating as the enclosure. 59C0956-1P1*





E169757 3 (UL) TYPE NM-2

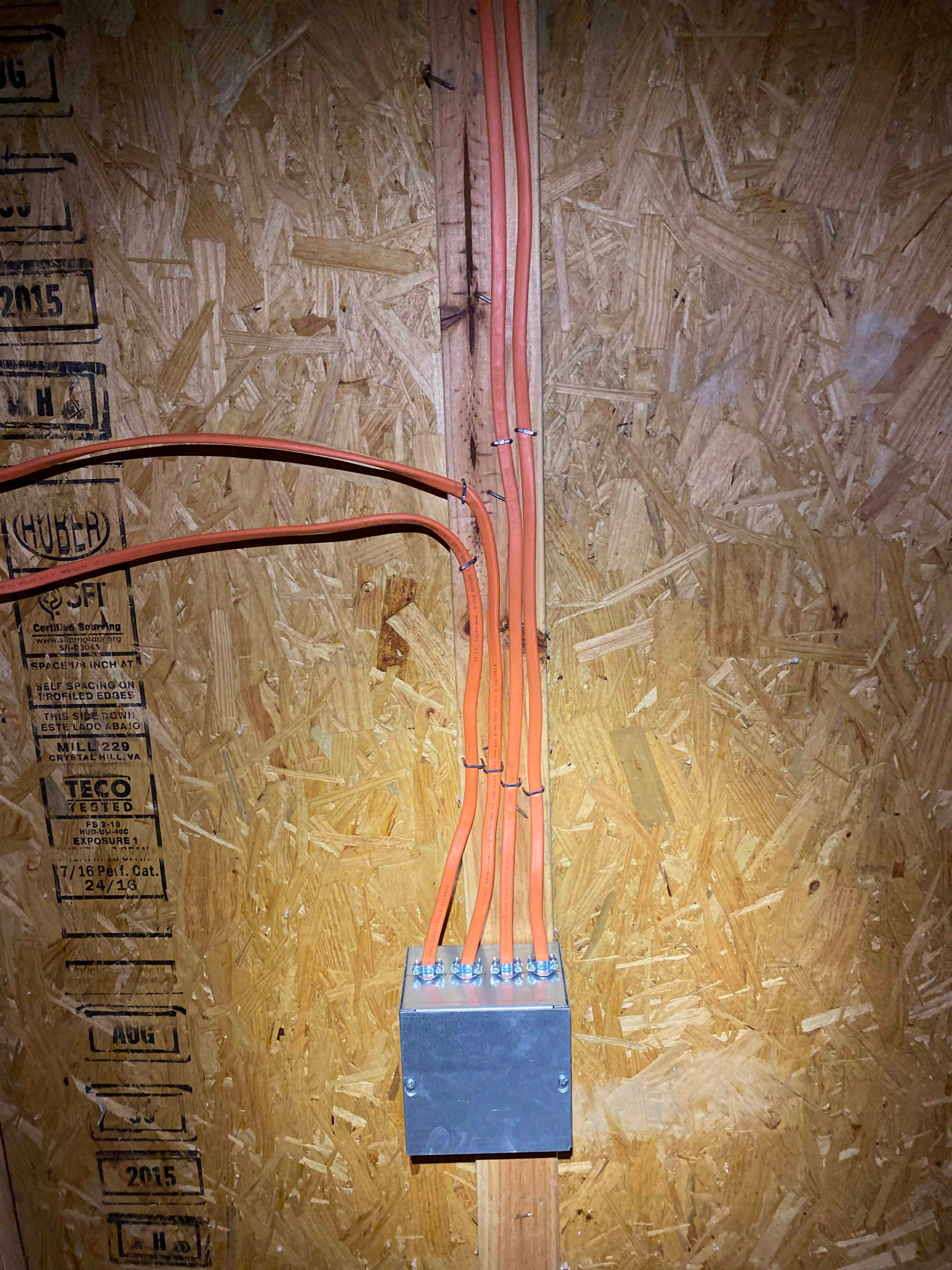
R-16-22 15-13

TYPE NM-B ONE AWG 10-2 WITH ONE

FT
Sourcing
INCH
SPACING ON
FILED DOWN
SIDE DOWN
LADO AREA
MILL 229
GAYLOR







OG

33

2015

H

HUBER

SFI
Certified Sourcing
www.sfiplatform.org
SFI-C0045
SPACE 1/8 INCH AT
SELF SPACING ON
PROFILED EDGES
THIS SIDE DOWN
ESTE LADO ABAJO
MILL 229
CRYSTAL HILL, VA

TECO
TESTED
PS 2-10
HUD-UM-40C
EXPOSURE 1
7/16 Perf. Cat.
24/18

AUG

33

2015

H



TECO
MILL 229
CRYSTAL HILL, VA
THIS SIDE DOWN
ESTE LADO ABAJO
PROFILED EDGES
SELF SPACING CN
SPACE 1/8 INCH AT

HUBER

2015

Aug



7/16 Per. Con.
24/16

AUG

2015

HUBER

7/16 Per. Con.
24/16

AUG

2015

HUBER

7/16 Per. Con.
24/16

AUG

2015

HUBER

7/16 Per. Con.
24/16

AUG

2015

HUBER

7/16 Per. Con.
24/16

AUG

2015

HUBER

7/16 Per. Con.
24/16

AUG

2015

HUBER

7/16 Per. Con.
24/16

AUG

2015

HUBER

7/16 Per. Con.
24/16

AUG

2015

HUBER

7/16 Per. Con.
24/16

AUG

2015

HUBER

7/16 Per. Con.
24/16

AUG

2015

HUBER





















TESTED
FOR STRENGTH
AND STABILITY
DATE: 11/16/01
BY: [illegible]
TEST NO. [illegible]