

















REC Alpha Pure Series
REC400AA_Pure

Serial Number: FBB-4009677870

Phone: +86 5385 8555
www.recgroup.com

Power Output (Pinout)

Watt Class: Sotting

Power Production Tolerance

Rated Voltage (Vrms)

Rated Current (Impp)

Open Circuit Voltage (Voc) (+/- 3%)

Short Circuit Current (Isc) (+/- 3%)

Maximum System Voltage (Vsys)

Maximum Series Fuse (DC) (A)

Maximum Series Fuse (DC) (REC)

Design Load

Minimum Test Load

Features: 1. V_{OC} 4000mV ± 3% (V_{OC} 4000mV ± 3%)
2. Maximum Voltage: 4000mV ± 3% (V_{OC} 4000mV ± 3%)

400 W

01 → 5 W

+/- 3 %

42.1 V

9.5(A)

48.8 V

10.2(A)

1000 V

35 A

25 A

+1000 / 2000 Pa*

+7000 / 4000 Pa*



ETL
Listed
Product

Compliance:
UL 60361-1 Class 2
California
California Proposition 65
UL 60361-1 Class 2



DVE
Distributed
Voltage
Equipment



UK
CA

Precautions:
1. Do not touch the output terminals when the device is powered on.
2. Do not touch the output terminals when the device is powered on.



Warning electrical hazard. This device produces electricity when connected to a light source. **DO NOT DISCONNECT UNDER LOAD.**

Attention: Risque de choc électrique. Ce module génère de l'électricité lorsque connecté à une source lumineuse.

ATTENTION: NE PAS DÉCONNECTER SOUS TENSION

For information, identify the device and the output terminals. Do not touch the output terminals when the device is powered on.

For information, identify the device and the output terminals. Do not touch the output terminals when the device is powered on.

For information, identify the device and the output terminals. Do not touch the output terminals when the device is powered on.

For information, identify the device and the output terminals. Do not touch the output terminals when the device is powered on.

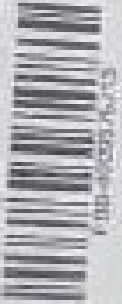
For information, identify the device and the output terminals. Do not touch the output terminals when the device is powered on.





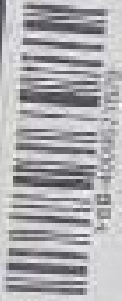
1-800-400-9770

REC-40000A Pure
Power: 400 W
Input: 0.81 A
Output: 42.1 V



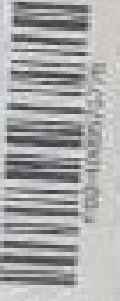
1-800-400-9770

REC-40000A Pure
Power: 400 W
Input: 0.81 A
Output: 42.1 V



1-800-400-9770

REC-40000A Pure
Power: 400 W
Input: 0.81 A
Output: 42.1 V



1-800-400-9770

REC-40000A Pure
Power: 400 W
Input: 0.81 A
Output: 42.1 V



1-800-400-9770

REC-40000A Pure
Power: 400 W
Input: 0.81 A
Output: 42.1 V



1-800-400-9770

REC-40000A Pure
Power: 400 W
Input: 0.81 A
Output: 42.1 V



1-800-400-9770

REC-40000A Pure
Power: 400 W
Input: 0.81 A
Output: 42.1 V



1-800-400-9770

REC-40000A Pure
Power: 400 W
Input: 0.81 A
Output: 42.1 V

UL listed for use in applications where the maximum ambient temperature is 40°C (104°F). For use in applications where the maximum ambient temperature is 50°C (122°F), see the UL listing for the product.



Device Communication LED

- Red: Red LED indicates a fault condition. A red LED is illuminated when a fault condition is detected.
- Green: Green LED indicates a normal operating condition. A green LED is illuminated when the device is in a normal operating condition.
- Blue: Blue LED indicates a warning condition. A blue LED is illuminated when a warning condition is detected.
- Yellow: Yellow LED indicates a caution condition. A yellow LED is illuminated when a caution condition is detected.



Device Status LED

Only a factory installed device can be used in this system. For more information, see the device manual.

48-1075

© 2022 Enphase Energy, Inc. All rights reserved. Enphase Energy, Inc. is a registered trademark of Enphase Energy, Inc.



ENPHASE.

IQ Combiner 4

Photovoltaic
Combiner Box
X-IQ-AM1-240-4



Electrical ratings

Voltage 240VAC, 60Hz
DC Breakers 30A MAX (combined)
DC Input 60A MAX (combined)
Output 60A MAX, 90A MAX feeder (CCFD)
Temperature 46°C MAX ambient
For DC breakers, use only Eaton BR series.

2022-12-15-1496

2022-12-15-1496

PN#

883-03056 12 6183

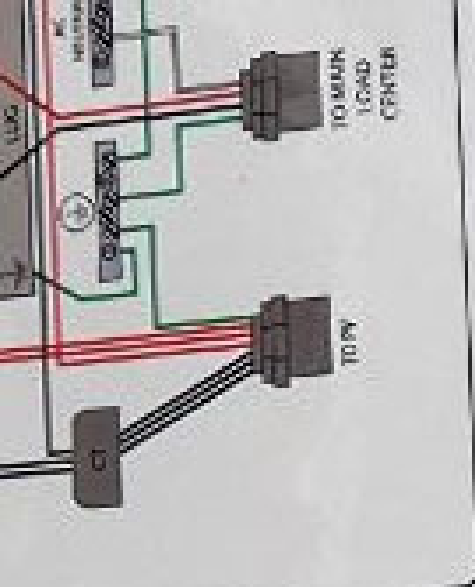
Dedicated solar and DC Combiner box - do not add loads to AMP or 15 AMP IQ Gateway Breaker not used for backfeed

Connection	Wire size	Torque
DC Breaker (1-2, 3, 4)	14-10 AWG	2.2 Nm (20 lb-in)
	6 AWG	2.8 Nm (25 lb-in)
	6-4 AWG	3.0 Nm (27 lb-in)
60A Circuit Breaker only	4-1/0 AWG	5.0 Nm (45 lb-in)
IQ Gateway Breaker	14-10 AWG	2.26 Nm (20 lb-in)
Neutral and ground		
Large screw	14-1/0 AWG	5.0 Nm (45 lb-in)
Small screw	6-14 AWG	2.2 Nm (20 lb-in)
Main lug	10-4 AWG	5.0 Nm (45 lb-in)
	3-2/0 AWG	5.6 Nm (50 lb-in)

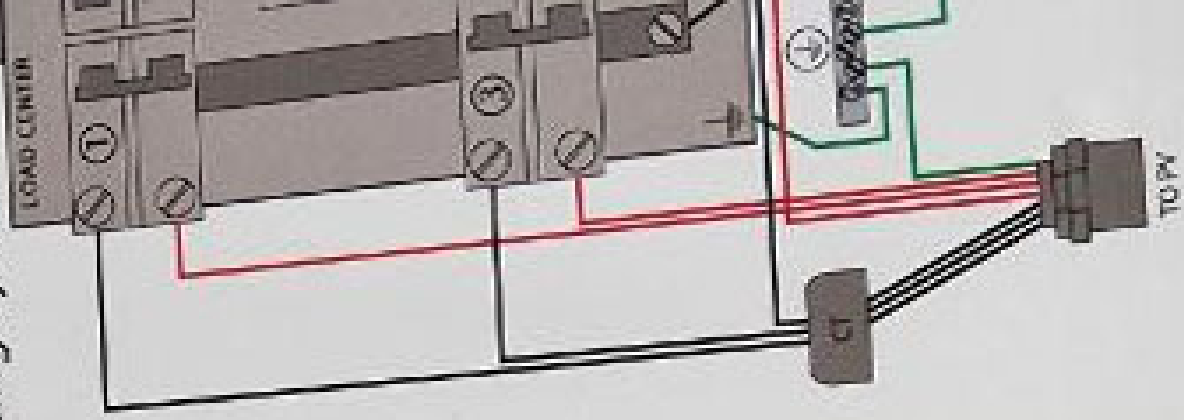
Copper conductors only, rated min. 75°C. Follow NFPA 70 (NEC), or CSA C22.1 part 1, and all local codes.

For DC Breakers larger than 30A, use wire insulated for 90°C based on 75°C ampacities.

Designed in California and New Zealand
Made in Mexico



For IQ-8 Grid Forming Systems

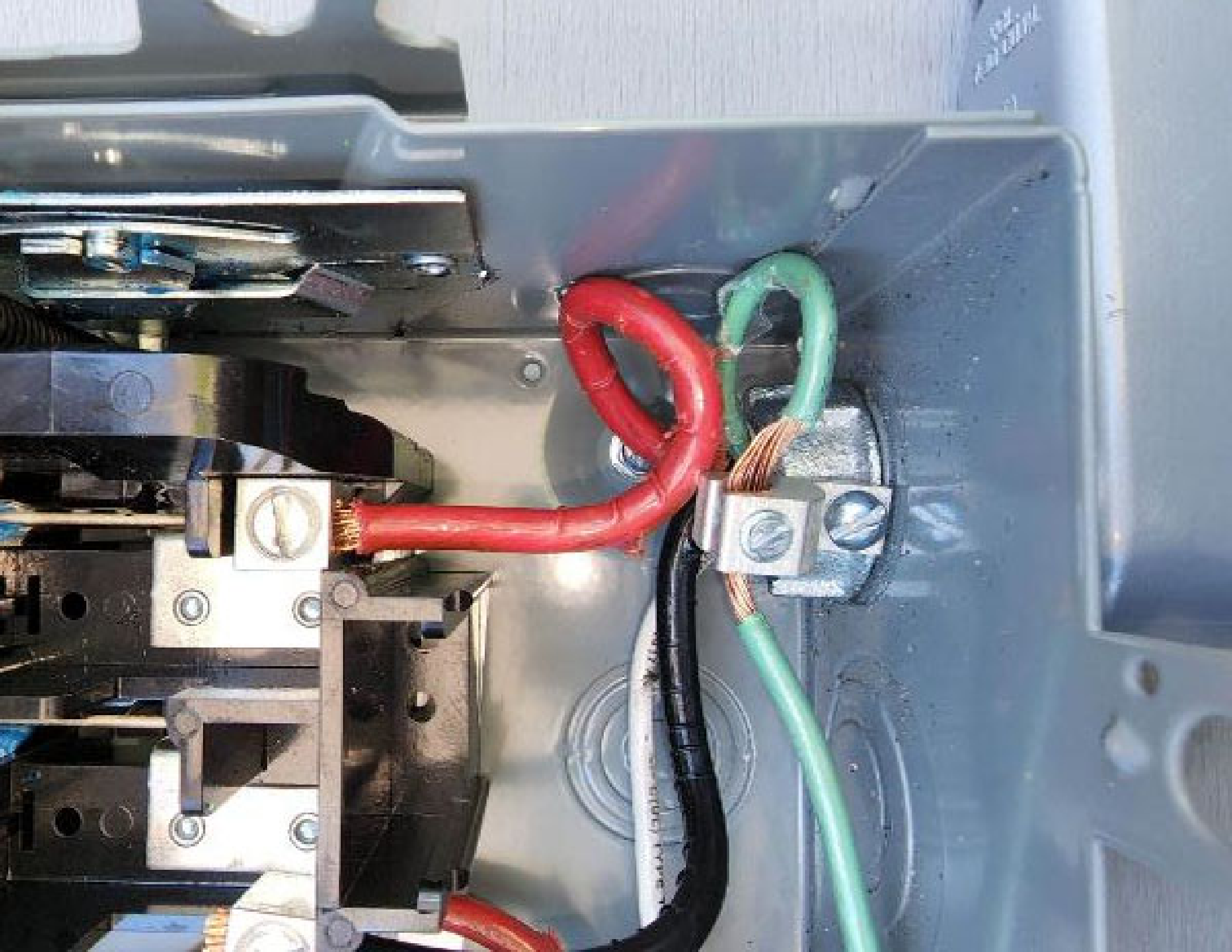








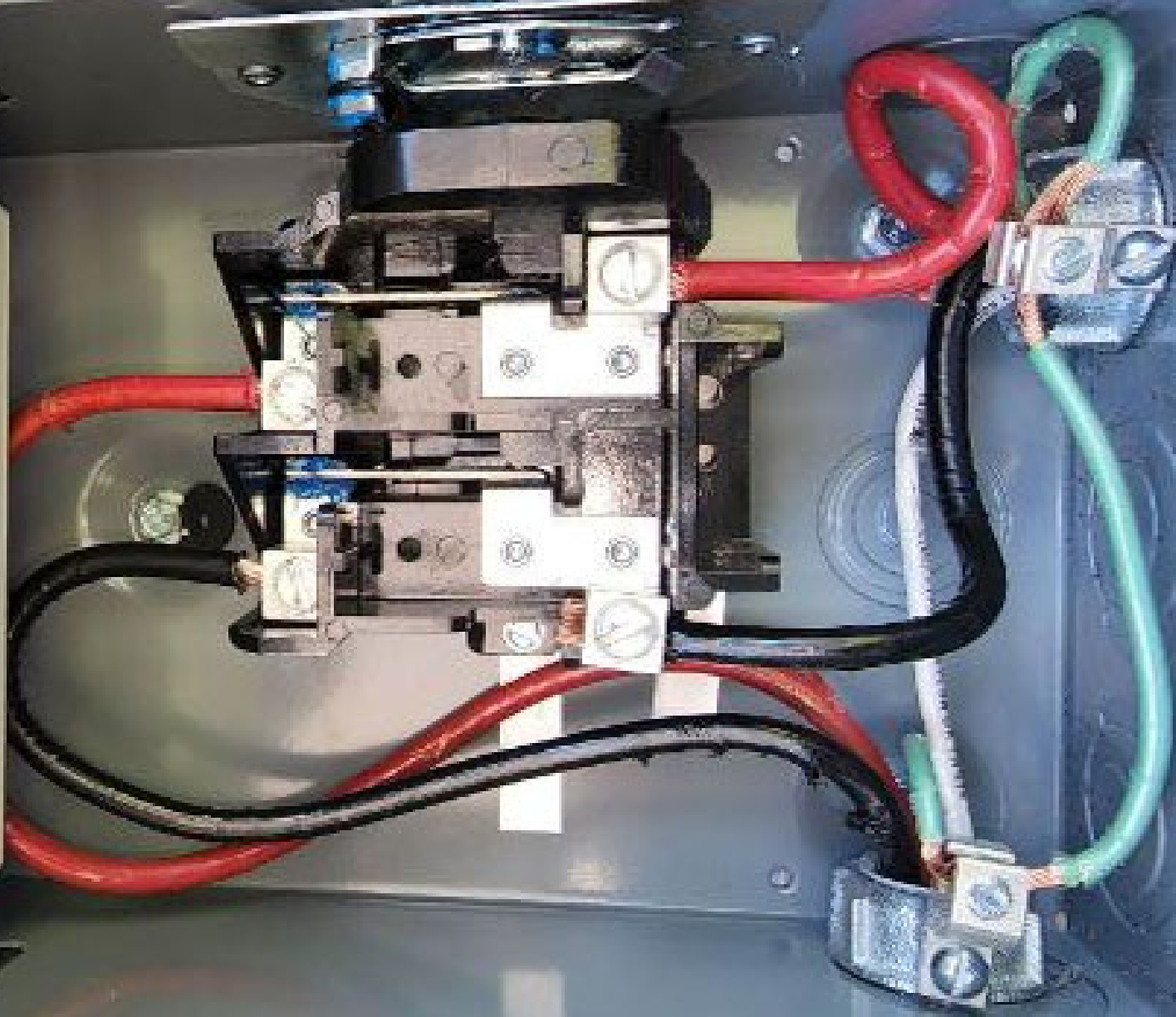




ATTENZIONE: L'uso non autorizzato di questo prodotto è vietato. Per informazioni sui rischi e le precauzioni, leggere attentamente il manuale di istruzioni. Questo prodotto è conforme alla direttiva CE 89/332/EEC. Il simbolo CE indica la conformità ai requisiti della direttiva CE 89/332/EEC. Il simbolo CE indica la conformità ai requisiti della direttiva CE 89/332/EEC. Il simbolo CE indica la conformità ai requisiti della direttiva CE 89/332/EEC.

ATTENZIONE: L'uso non autorizzato di questo prodotto è vietato. Per informazioni sui rischi e le precauzioni, leggere attentamente il manuale di istruzioni. Questo prodotto è conforme alla direttiva CE 89/332/EEC. Il simbolo CE indica la conformità ai requisiti della direttiva CE 89/332/EEC. Il simbolo CE indica la conformità ai requisiti della direttiva CE 89/332/EEC. Il simbolo CE indica la conformità ai requisiti della direttiva CE 89/332/EEC.

ATTENZIONE: L'uso non autorizzato di questo prodotto è vietato. Per informazioni sui rischi e le precauzioni, leggere attentamente il manuale di istruzioni. Questo prodotto è conforme alla direttiva CE 89/332/EEC. Il simbolo CE indica la conformità ai requisiti della direttiva CE 89/332/EEC. Il simbolo CE indica la conformità ai requisiti della direttiva CE 89/332/EEC. Il simbolo CE indica la conformità ai requisiti della direttiva CE 89/332/EEC.





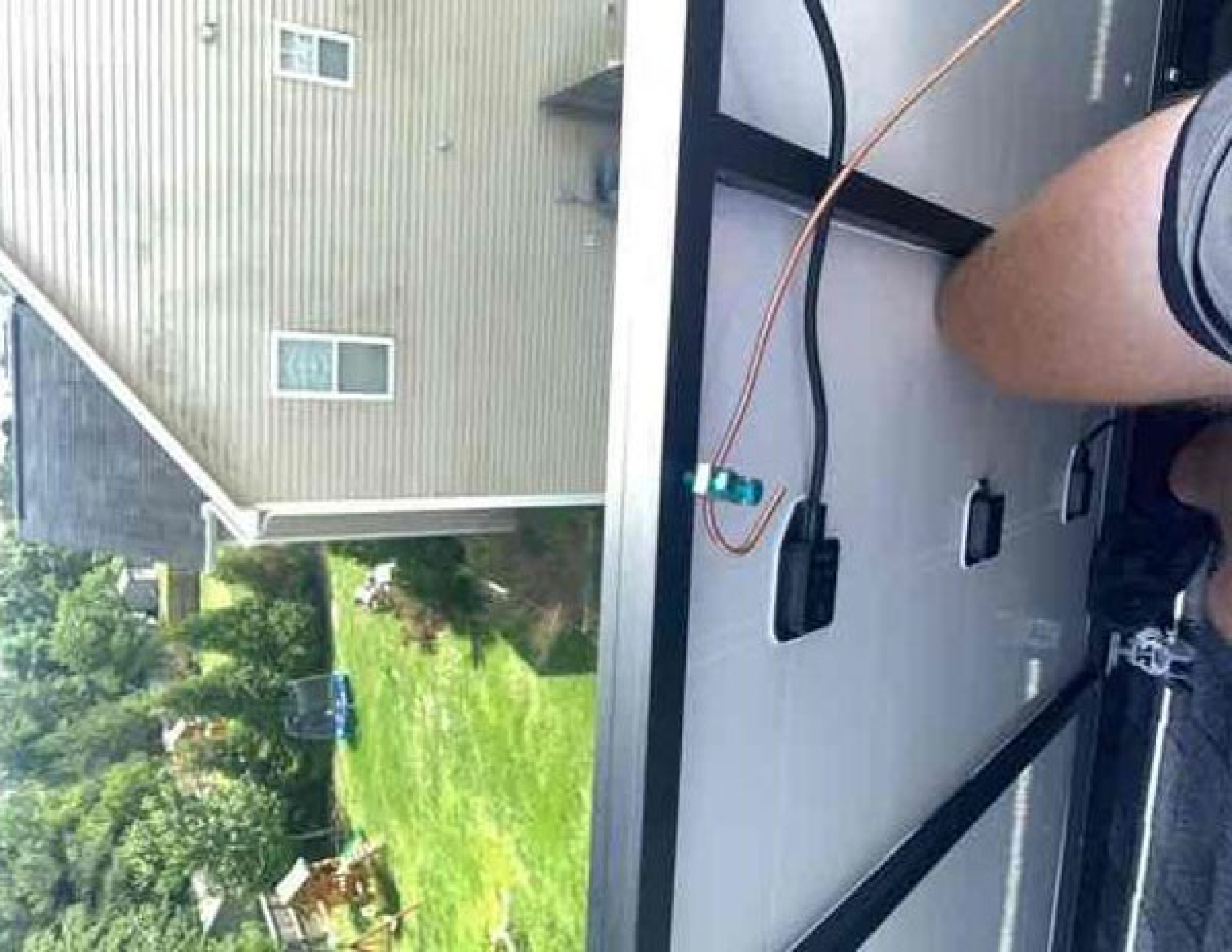
REPAIRS
CALL 1-800-555-1234
1234567890
1234567890

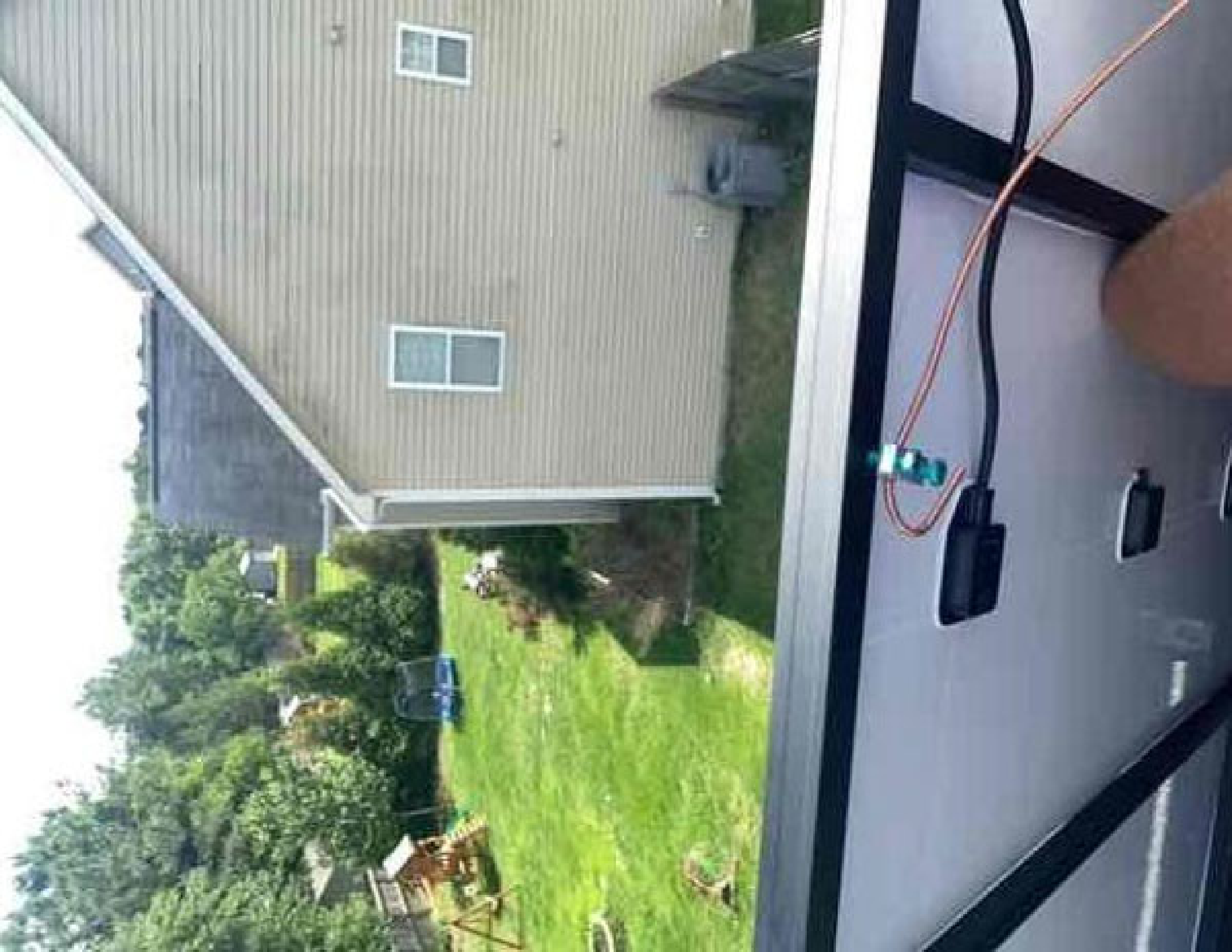


PROPERTY INFORMATION
Warranty Company









Customer Name: **SMERNA RIVER RD - ARCHER BLUE RAVEN**

Installation Date: **MAY 25 22**

Address: **17 BRAD CT. GIBBER NC**

Installed Equipment:	Waterizer
Electrical Utility:	Yes
Water & Sewer Utility:	Yes

215 BRUCE WATER DISTRICT

Service Provider:	SMERNA RIVER
Service Address:	17 BRAD CT
Service Contact:	[Handwritten]
Service Phone:	[Handwritten]
Service Email:	[Handwritten]
Service Website:	[Handwritten]
Service Notes:	[Handwritten]

The Cost of Materials, Labor, and permits is the responsibility of the customer. We are not responsible for any other costs incurred by the customer. We are not responsible for any other costs incurred by the customer.



Please contact a Water Service Specialist and provide the information below for any orders to the...

Emergency Service is always free. For more information, please contact us at 1-800-368-8888.

Water & Sewer Utility: [Handwritten]

Water & Sewer Utility: [Handwritten]

Water & Sewer Utility: [Handwritten]

Water & Sewer Utility: [Handwritten]



SOLAR PV SYSTEM EQUIPPED WITH RAPID SHUTDOWN

ALL SOLAR PV SYSTEMS ARE EQUIPPED WITH RAPID SHUTDOWN. THIS MEANS THAT THE SYSTEM WILL SHUT OFF AUTOMATICALLY IN THE EVENT OF A FIRE. THIS IS TO PREVENT THE SYSTEM FROM BEING A SOURCE OF HEAT AND SMOKE. THIS IS TO PROTECT THE PROPERTY AND THE PEOPLE IN THE AREA.

PHOTOVOLTAIC SYSTEM WITH RAPID SHUTDOWN

THIS SYSTEM IS EQUIPPED WITH RAPID SHUTDOWN. THIS MEANS THAT THE SYSTEM WILL SHUT OFF AUTOMATICALLY IN THE EVENT OF A FIRE. THIS IS TO PREVENT THE SYSTEM FROM BEING A SOURCE OF HEAT AND SMOKE. THIS IS TO PROTECT THE PROPERTY AND THE PEOPLE IN THE AREA.

WARNING

ELECTRIC SHOCK HAZARD. DO NOT TOUCH THE WIRING OR COMPONENTS OF THIS SYSTEM. ALWAYS USE PROPER SAFETY PROCEDURES WHEN WORKING ON ELECTRICAL SYSTEMS.

WARNING

ELECTRIC SHOCK HAZARD. DO NOT TOUCH THE WIRING OR COMPONENTS OF THIS SYSTEM. ALWAYS USE PROPER SAFETY PROCEDURES WHEN WORKING ON ELECTRICAL SYSTEMS.

WARNING

PHOTOVOLTAIC SYSTEM WITH RAPID SHUTDOWN

THIS SYSTEM IS EQUIPPED WITH RAPID SHUTDOWN. THIS MEANS THAT THE SYSTEM WILL SHUT OFF AUTOMATICALLY IN THE EVENT OF A FIRE. THIS IS TO PREVENT THE SYSTEM FROM BEING A SOURCE OF HEAT AND SMOKE. THIS IS TO PROTECT THE PROPERTY AND THE PEOPLE IN THE AREA.

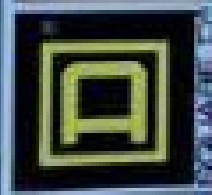
WARNING

ELECTRIC SHOCK HAZARD. DO NOT TOUCH THE WIRING OR COMPONENTS OF THIS SYSTEM. ALWAYS USE PROPER SAFETY PROCEDURES WHEN WORKING ON ELECTRICAL SYSTEMS.

WARNING

ELECTRIC SHOCK HAZARD. DO NOT TOUCH THE WIRING OR COMPONENTS OF THIS SYSTEM. ALWAYS USE PROPER SAFETY PROCEDURES WHEN WORKING ON ELECTRICAL SYSTEMS.

PHOTOVOLTAIC SYSTEM WITH RAPID SHUTDOWN



GENERAL DUTY
SAFETY SWITCH
INTERRUPTOR DE
SEGURIDAD DE
SERVICIO GENERAL
60 A
240 Vac / 1P-

**RAPID SHUTDOWN
SWITCH FOR
SOLAR PV SYSTEM**

⚠ WARNING

ELECTRIC SHOCK HAZARD
TERMINALS ON THE LINE AND
LOAD SIDES MAY BE ENERGIZED
IN THE OPEN POSITION

PHOTOVOLTAIC SYSTEM
⚠ AC DISCONNECT ⚠

RATED AC OUTPUT CURRENT **20.9 A**
NOMINAL OPERATING AC VOLTAGE **240 V**

⚠ WARNING

POWER TO THIS BUILDING IS ALSO
SUPPLIED FROM MAIN DISTRIBUTION
UTILITY DISCONNECT LOCATED

Meter - Panel

WARNING: TO PREVENT
ELECTRIC SHOCK, DISCONNECT
FROM MAIN DISTRIBUTION
UTILITY DISCONNECT LOCATED
BEFORE WORKING ON THIS
EQUIPMENT.

0255

025

⚠ WARNING

THIS EQUIPMENT HAS BY MULTIPLE SOURCES. TOTAL RATINGS OF ALL SHORT-CIRCUIT DEVICES, EXCLUDING MAIN SUPPLY OVERCURRENT DEVICE, SHALL NOT EXCEED CAPACITY OF BUSBAR.

⚠ WARNING

ELECTRIC SHOCK HAZARD. TERMINALS ON THE LINE AND LOAD SIDES MAY BE ENERGIZED IN THE OPEN POSITION.

**PHOTOVOLTAGIC SYSTEM
⚠ AC DISCONNECT ⚠**

Maximum current 66.9 A
Normal operating voltage 240 V

⚠ WARNING

PHOTOVOLTAGIC SYSTEM
COMBINED PANEL.

DO NOT ADD LOADS

 ENPHASE

⚠ WARNING

SEE THE USER MANUAL FOR THE PROPER INSTALLATION AND MAINTENANCE OF THIS EQUIPMENT. SEE THE USER MANUAL FOR THE PROPER WIRING AND TESTING PROCEDURES.























10VOLTAC
NURCE

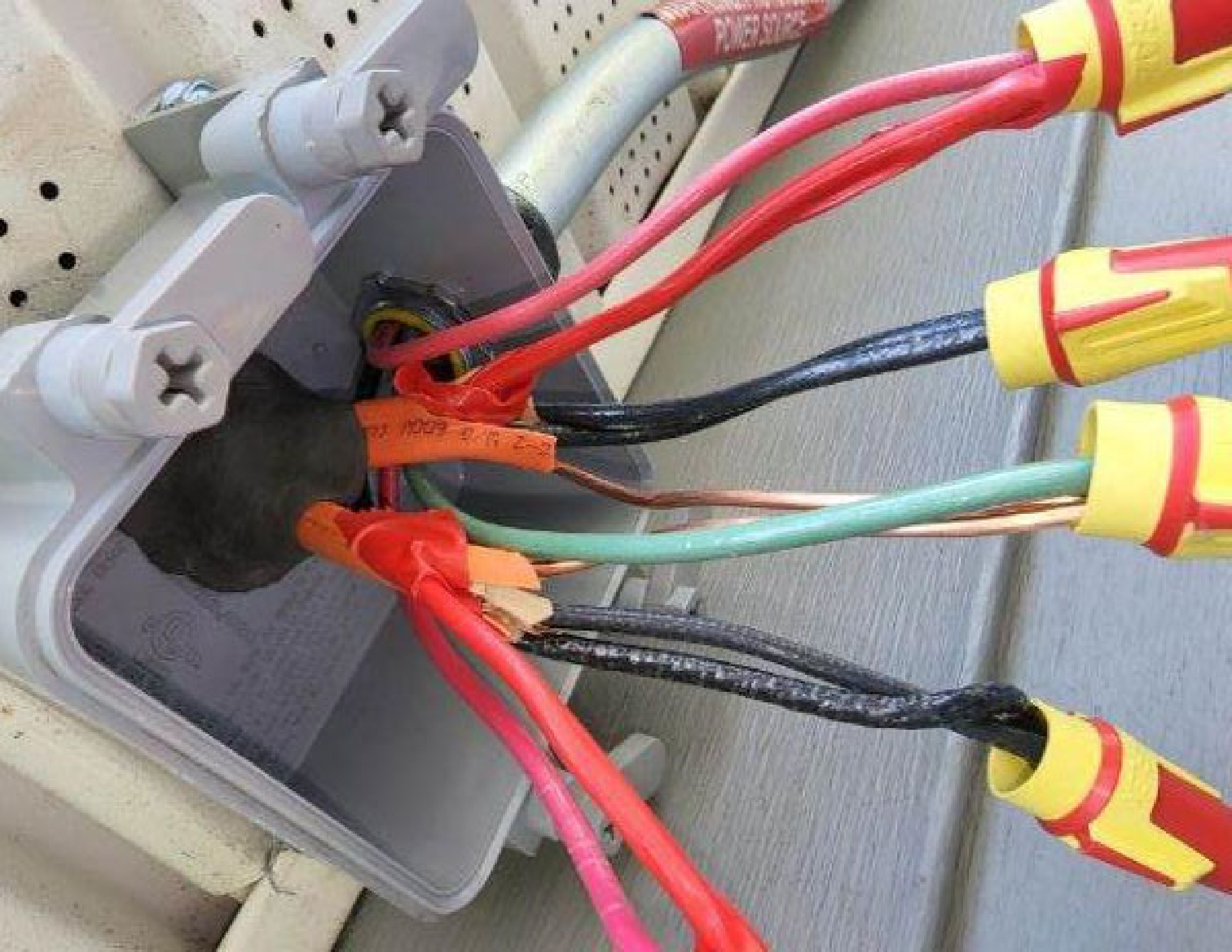








107 Emma St
London, ON
N6C 2S6







057

14-00388-14
204
2128



BLUE RAVEN

FOR THE BEST SERVICE
 PLEASE CALL 1-800-854-3434
 OR VISIT US ONLINE AT
 WWW.BLUERAVEN.COM



WE ARE
 BLUE RAVEN
 THE BEST SERVICE
 YOU CAN GET



Blue Raven
 1-800-854-3434
 WWW.BLUERAVEN.COM





ENPHASE ENERGY INC. 2015
 ENPHASE ENERGY INC. 2015
 ENPHASE ENERGY INC. 2015
 ENPHASE ENERGY INC. 2015
 ENPHASE ENERGY INC. 2015

ENPHASE
IQ7+

1000VA
 120VAC
 15A

ENPHASE ENERGY INC. 2015
 ENPHASE ENERGY INC. 2015
 ENPHASE ENERGY INC. 2015
 ENPHASE ENERGY INC. 2015
 ENPHASE ENERGY INC. 2015



WARNING: ELECTRICAL SHOCK
 HAZARD. DO NOT TOUCH THE
 INTERNAL COMPONENTS OF THE
 DEVICE. TO PREVENT ELECTRICAL
 SHOCK, DISCONNECT THE DEVICE
 FROM THE MAIN POWER SUPPLY
 BEFORE ATTEMPTING TO SERVICE
 OR REPAIR. ALWAYS USE
 PROPER SAFETY PROCEDURES.
 ENPHASE ENERGY INC. 2015

ATTENTION: ENPHASE ENERGY
 INC. IS NOT RESPONSIBLE FOR
 DAMAGES OF ANY KIND, INCLUDING
 CONSEQUENTIAL DAMAGES, ARISING
 FROM THE USE OF THIS DEVICE.
 ENPHASE ENERGY INC. 2015









10/1

Customer Support: 1-800-870-8329
www.unirac.com



Factory Code: 018A
Manufacture Date: 08/2021
WOPD#: 004430-01
Pack Size: 10 EA
SEM UNIV TRIMBALL CLIP DART



2501111



BETTER SOLAR STARTS HERE
UNIRAC
www.unirac.com

UNIRAC
UNIRAC
UNIRAC

UNIRAC
UNIRAC

UNIRAC
UNIRAC













UNIRAC

BETTER SOLAR STARTS HERE

www.unirac.com



2 5 3 0 2 0 U

SFM MICRORAIL 2z

Pack Size: 10

WO/PO# :0045419-01

Manufacture date: **Feb 2011**

Factory Code : 010A





UNIRAC
- BETTER SOLAR STARTS HERE!
www.unirac.com



2 5 3 0 1 0 U

SFM SPLICE 6.5"

Pack Size: 10

WO/PO#: 0045267-00

Manufacture date: C1 201

Factory Code : 010A



 **UNIRAC**



250712003

UNIRAC BOLT 1/4"

PK 100

UNIRAC BOLT 1/4"

Manufacturer Part: 0000-001

Part Code: 000



110



004201D



FLASHKIT SFM TRIM S
Part No: 10
Factory Code: S-1

004201D

FLASHKIT SFM TRIM S





FLASHKIT 6FM SLIDER S

004271D



FLASHKIT 6FM SLIDER'S COMP. DISK
COVER PART. USE 1 OF
Factory Order Kit



© 2004 Intel Corporation. All rights reserved. Intel, the Intel logo, and Intel Inside are trademarks or registered trademarks of Intel Corporation or its subsidiaries in the United States and other countries.

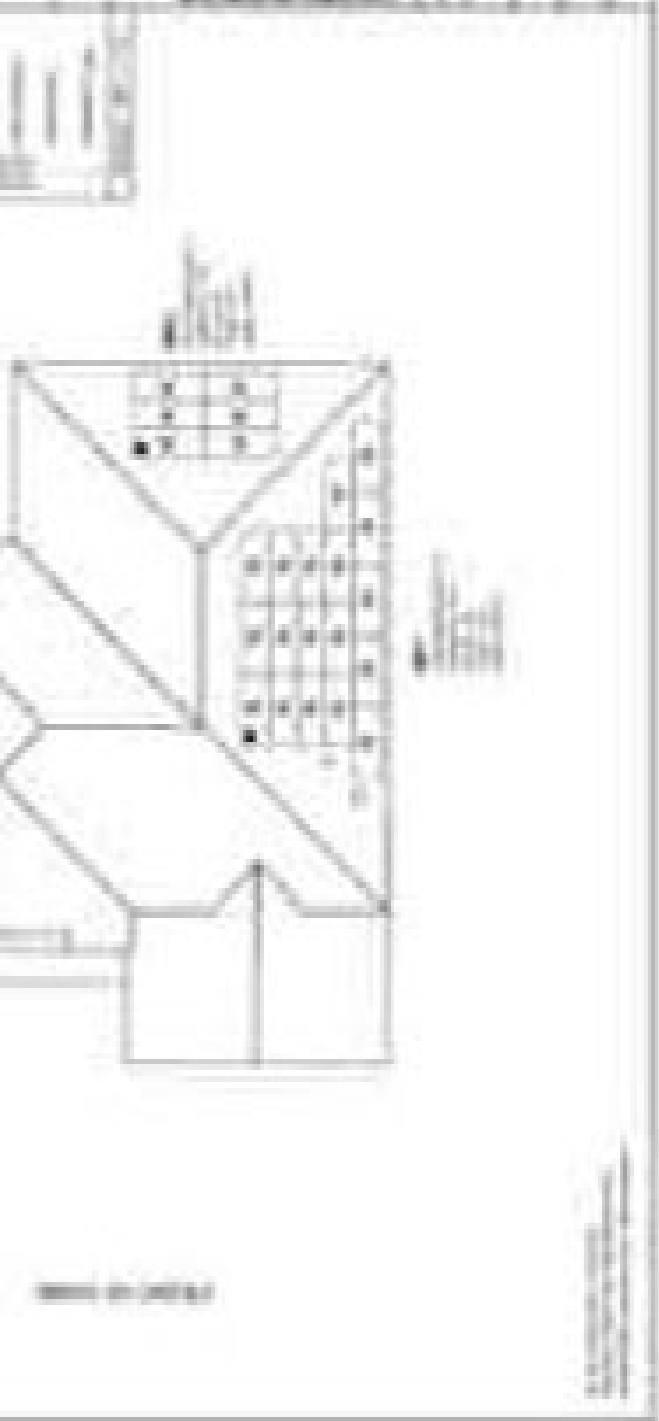
UNIRAC



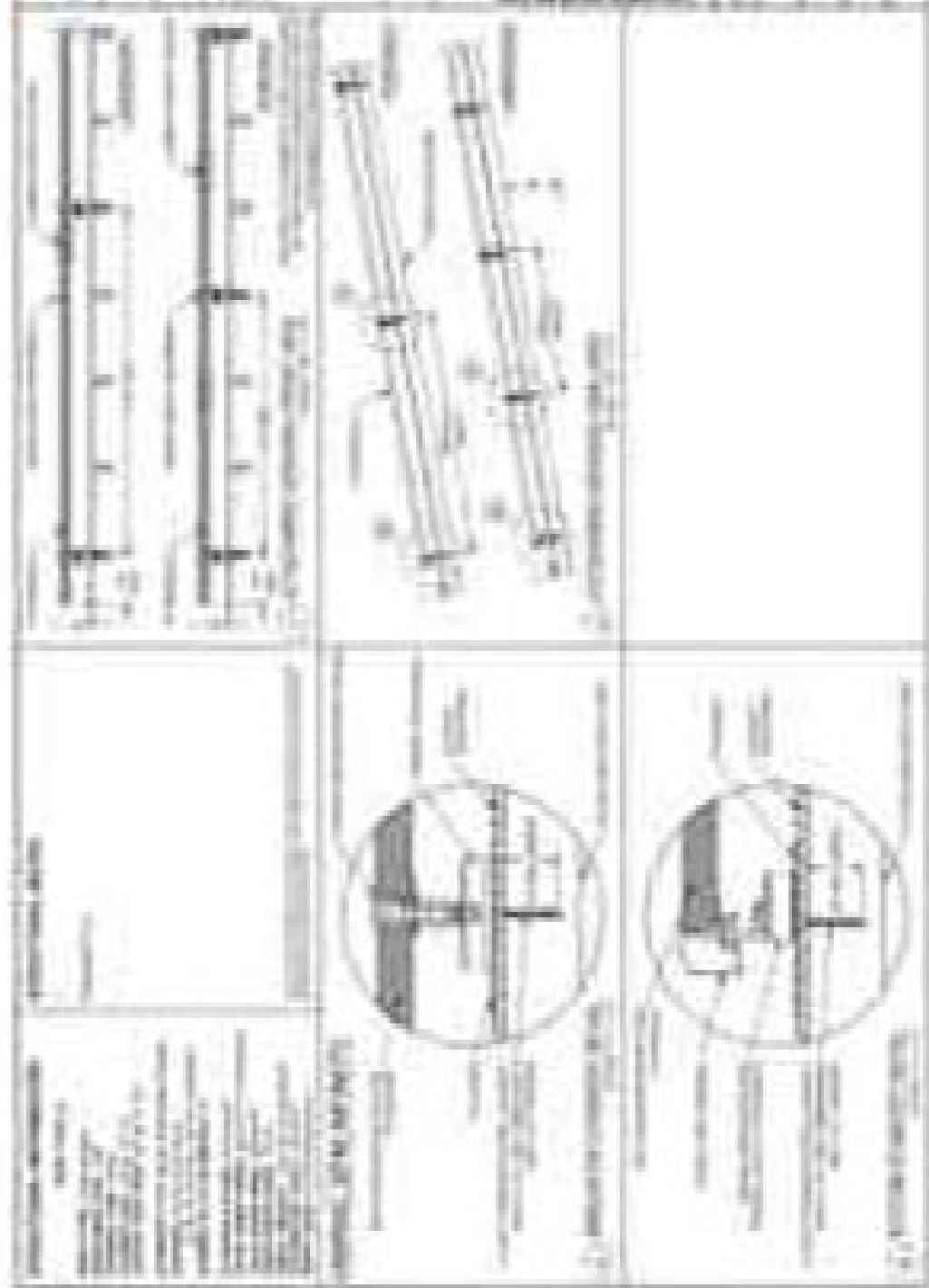




1. **Project Name:** [Blank]
 2. **Client Name:** [Blank]
 3. **Project Address:** [Blank]
 4. **Project Start Date:** [Blank]
 5. **Project End Date:** [Blank]



1. **Project Name:** [Blank]
 2. **Client Name:** [Blank]
 3. **Project Address:** [Blank]
 4. **Project Start Date:** [Blank]
 5. **Project End Date:** [Blank]



1. **Project Name:** [Blank]
 2. **Client Name:** [Blank]
 3. **Project Address:** [Blank]
 4. **Project Start Date:** [Blank]
 5. **Project End Date:** [Blank]







ecobee

Rm
C
W1
W2
PE

R
G
Y1
Y2
0V



Dr. Ingersoll



Inside
78°

Fan



Auto On

System



Cool Off Heat Em. Heat



50018270-0002



<http://yourhome.honey>
1-800-468-1502



E AUX Y G O L H B C

C IS OPTIONAL
WITH BATTERIES

Signal
LINE

LEVEL





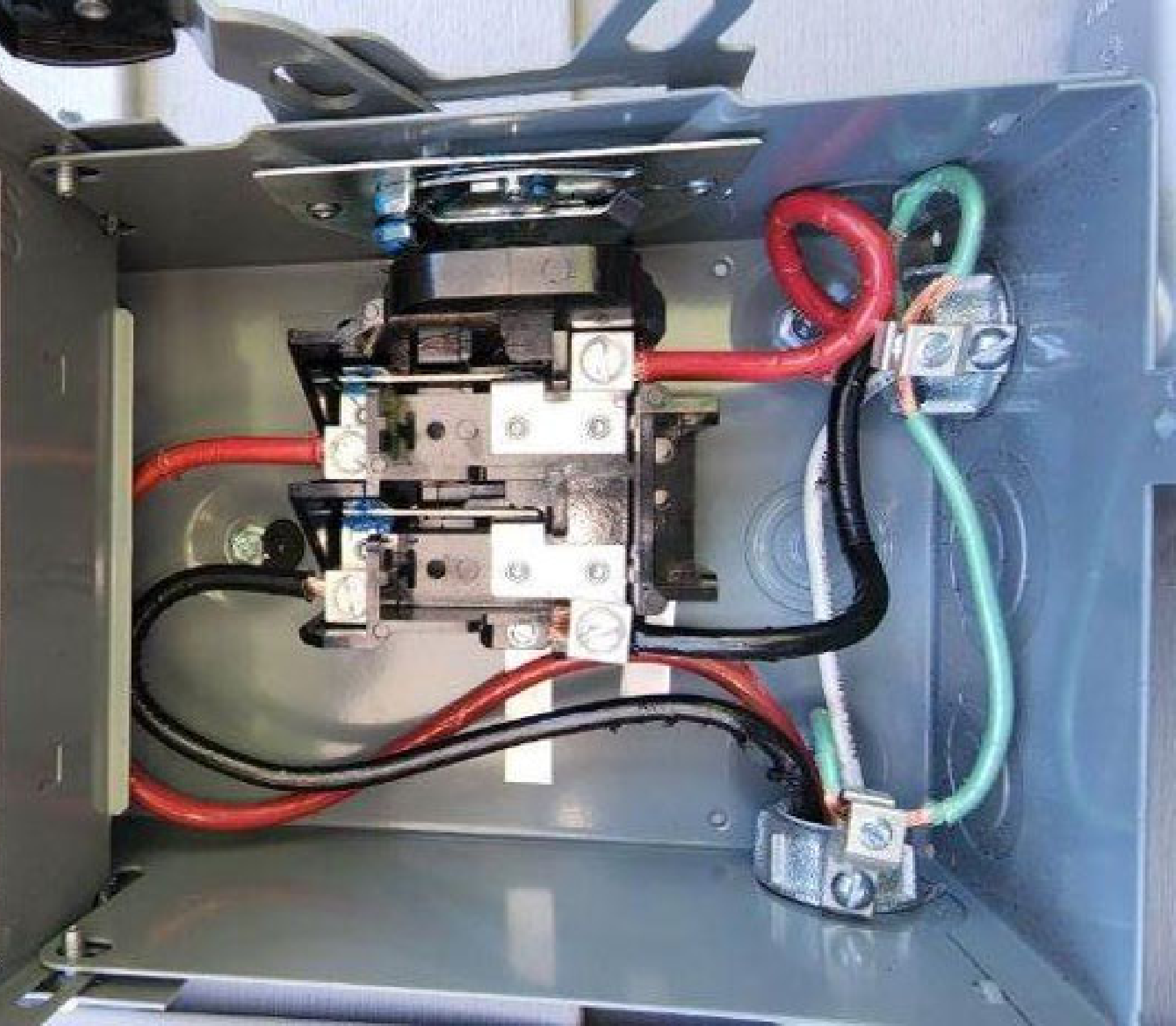
5000 ENERGY PROGRAM
301-289-5900

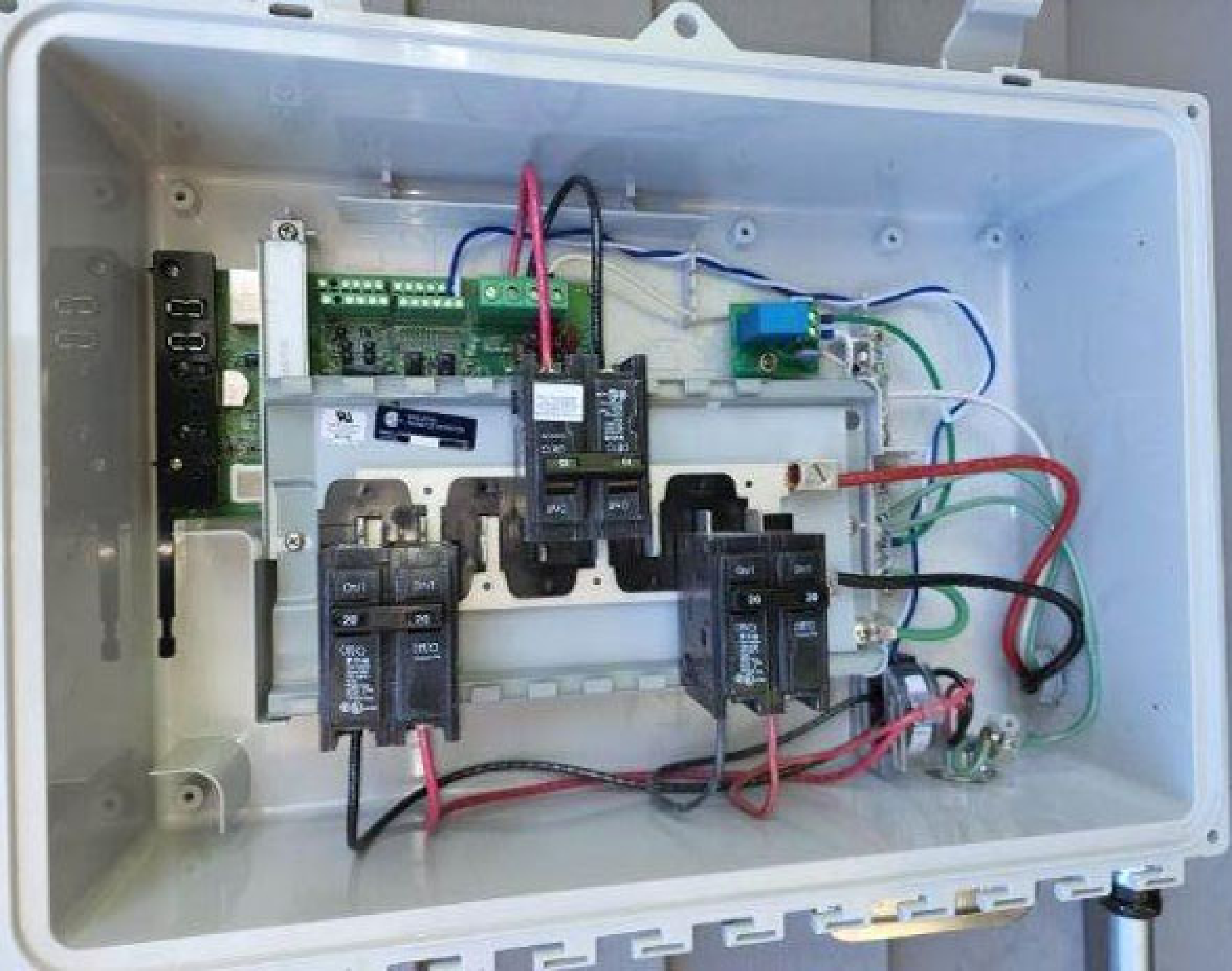
OpenView
TM

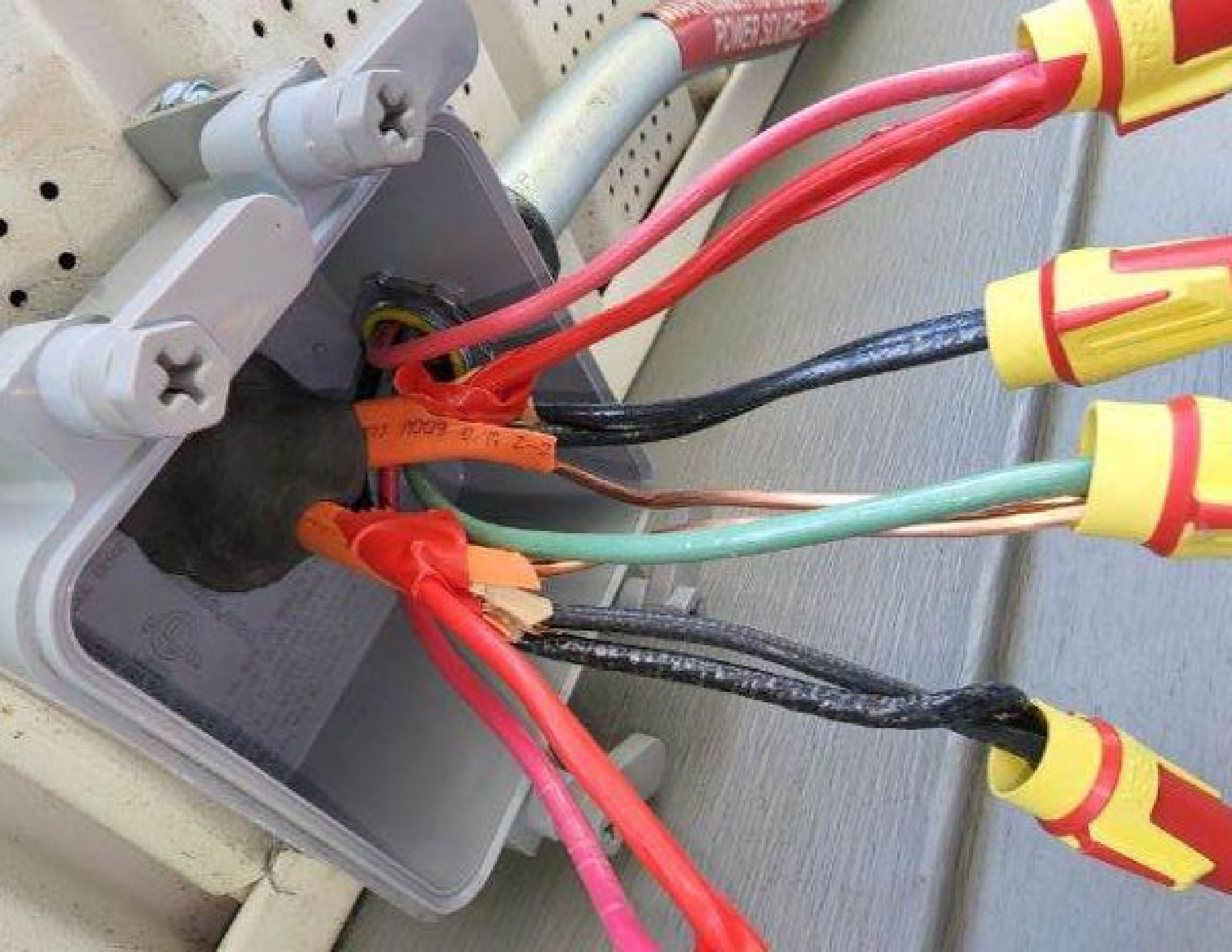


EMERSON has implemented the most comprehensive and rigorous test procedures for its products to ensure the highest quality and reliability. Emerson's commitment to quality is reflected in its ISO 9001 certification and its ISO 14001 environmental management system certification. Emerson's products are designed to meet the most demanding applications and to provide the highest level of performance and reliability. Emerson's products are designed to meet the most demanding applications and to provide the highest level of performance and reliability.

EMERSON
POWER QUALITY
SERVICES

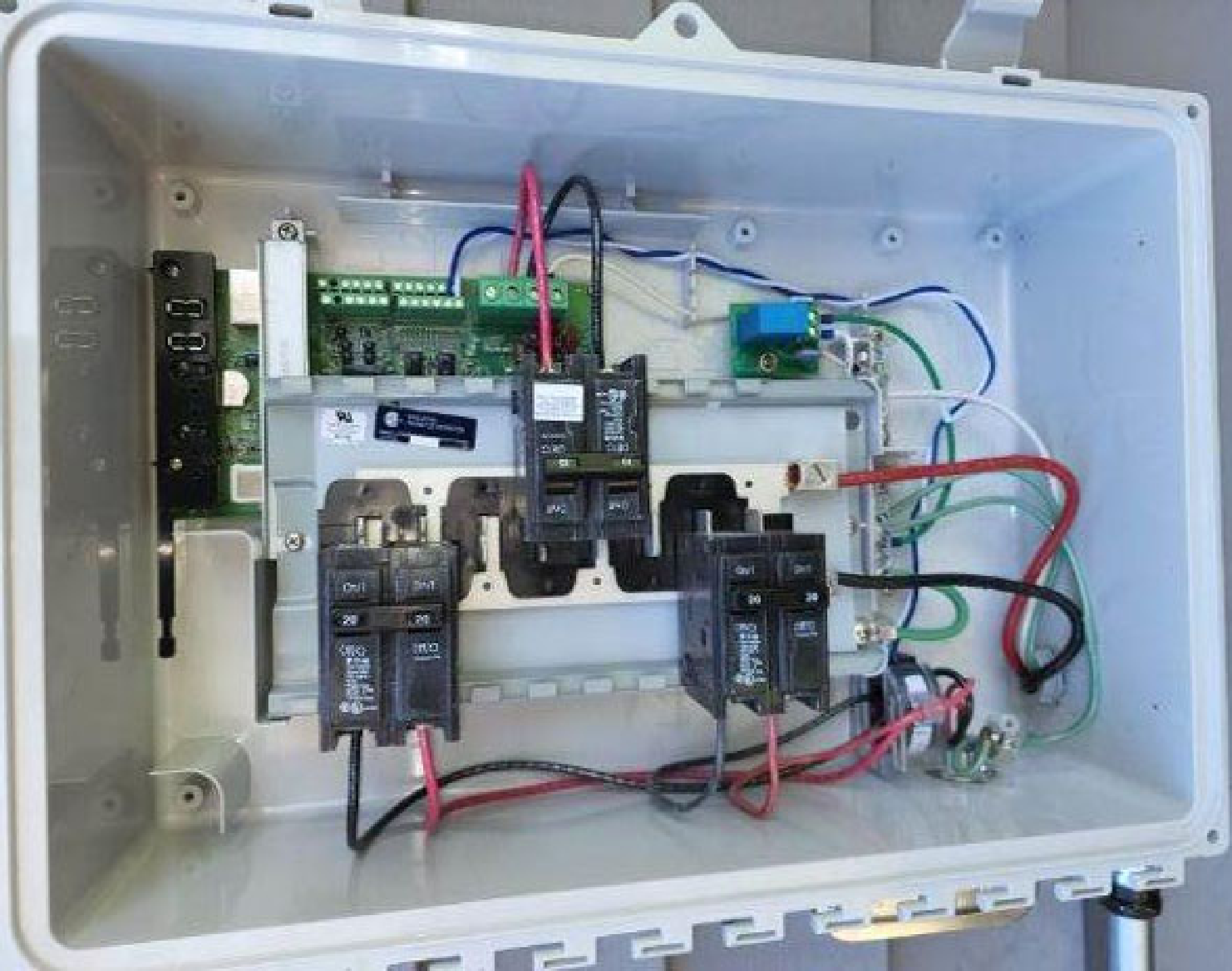








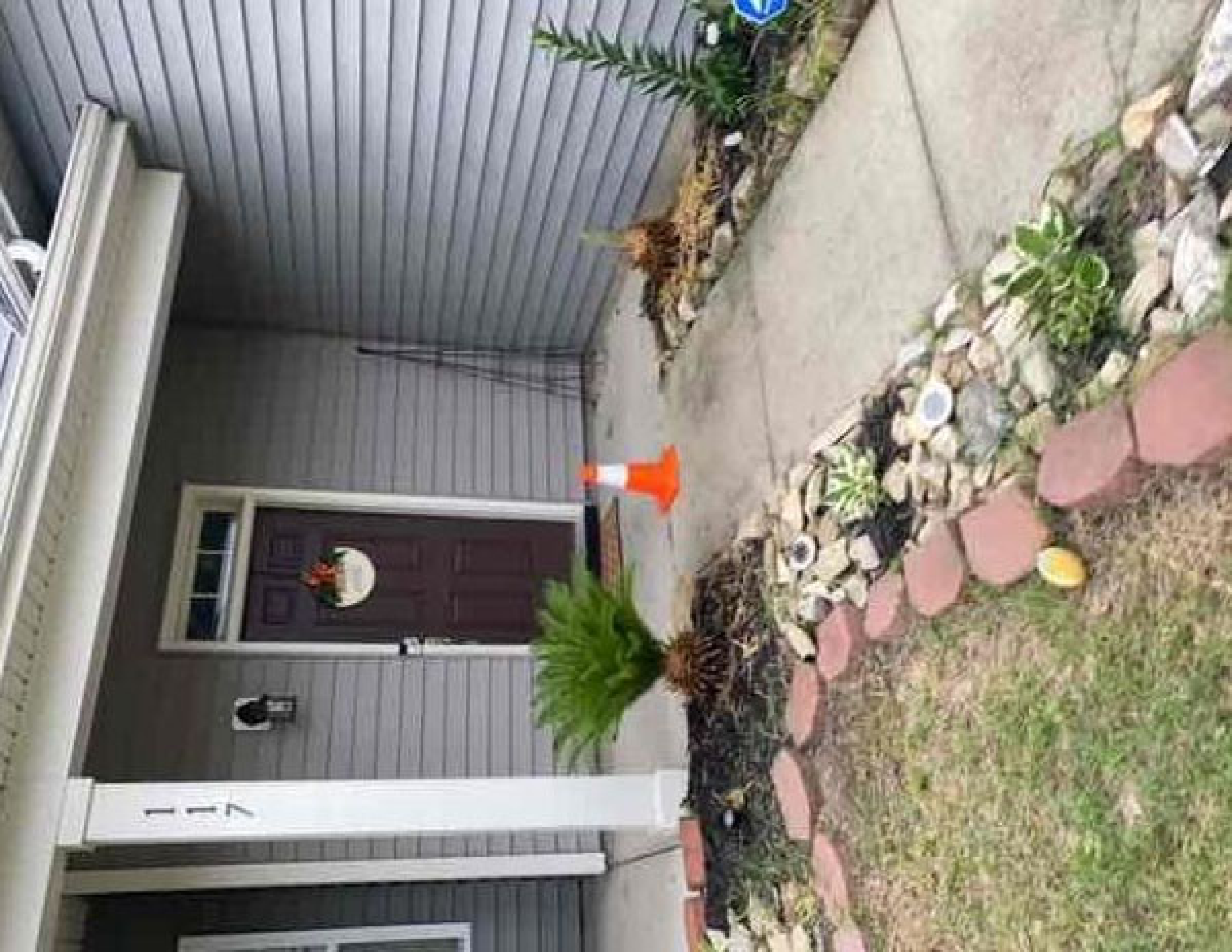














Production

Today: 0.00 kWh

Lifetime: 0.00 kWh

Consumption

Today: 0.00 kWh

Lifetime: 0.00 kWh

Grid

IEC

PO

Im

Recommended only for large installations

PLC-SCAN

Powerline Communications Noise detection



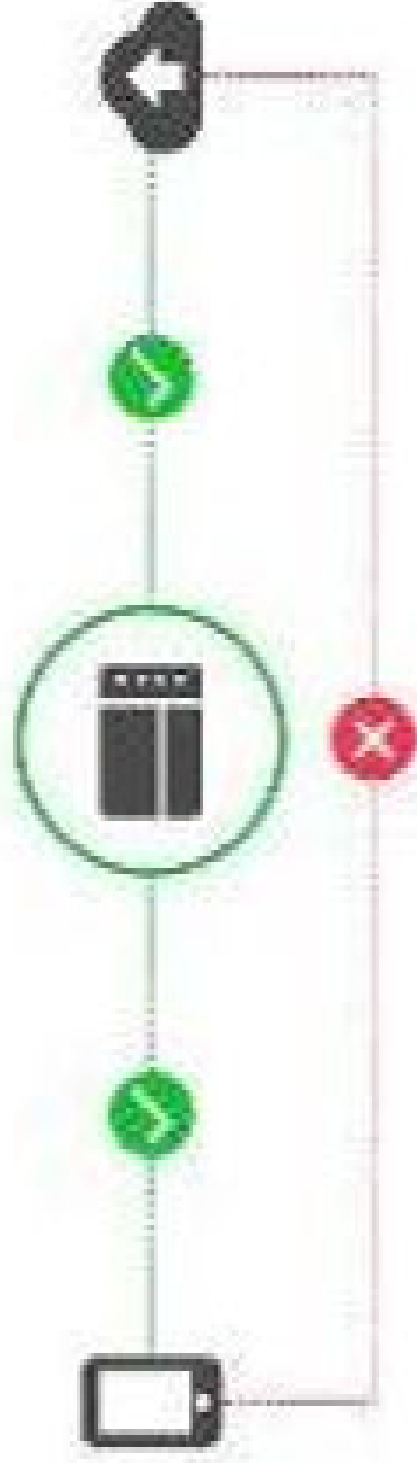
Scan completed

MicroInverters : 24/24

Done

Start Provisioning Devices

Envoy 202212151496



Envoy successfully connected to Enlighten and
Installer Toolkit

Envoy Connectivity status



Wi-Fi

Connected



192.168.1.93

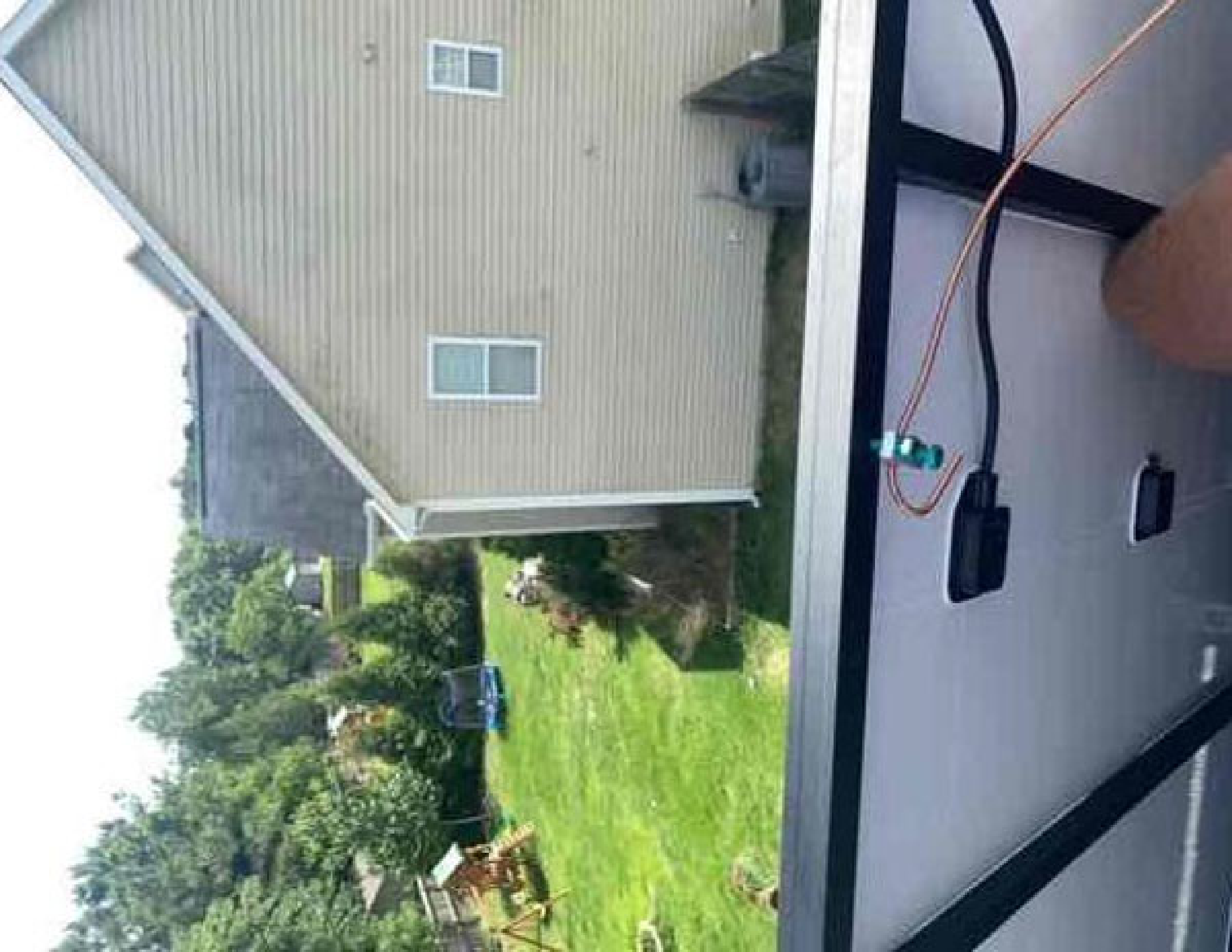


Ethernet



Cellular







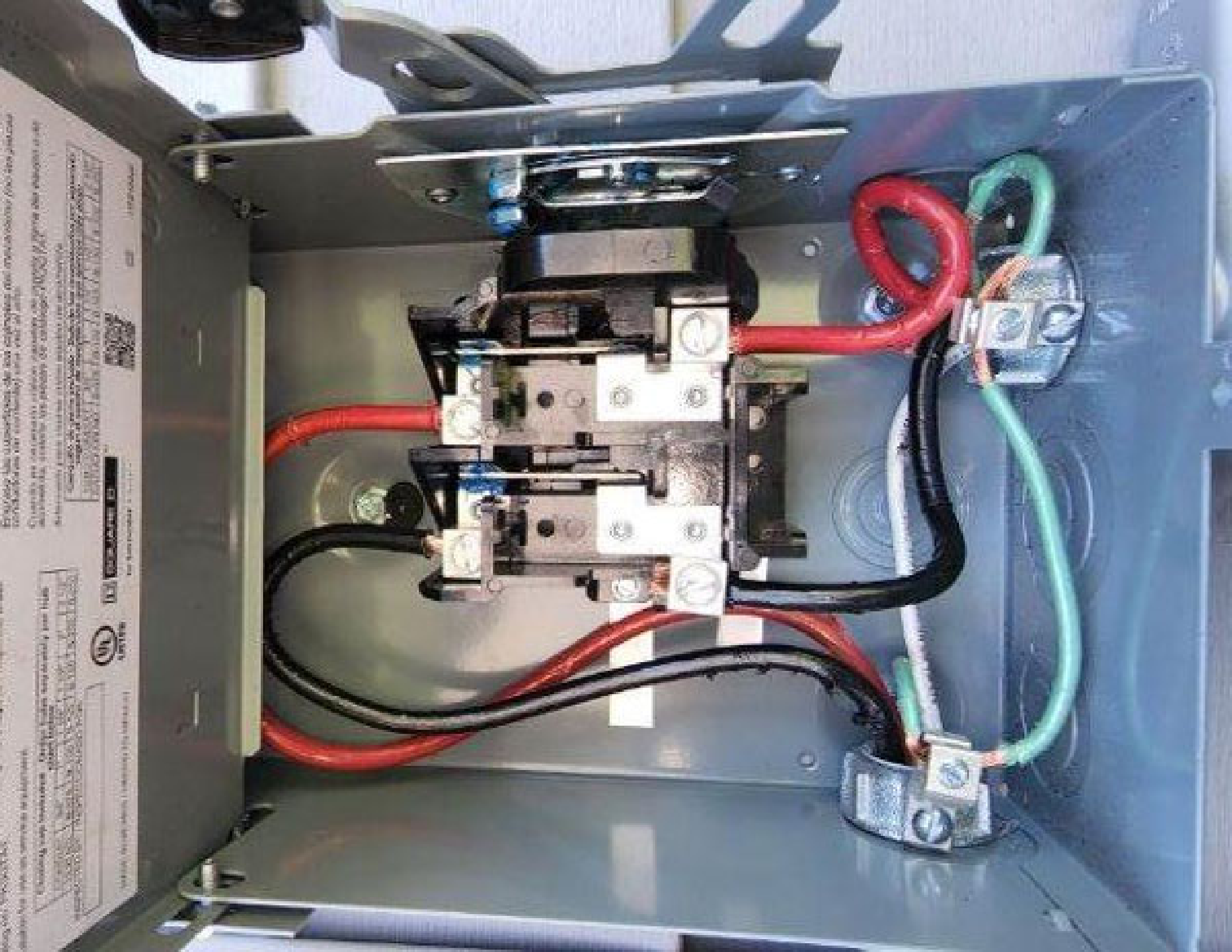




5000 ENERGY PROGRAM
301-289-5900

OpenView
TM





EMERGENCY SERVICE...
...and emergency...
...and emergency...

...and emergency...
...and emergency...
...and emergency...

...and emergency...
...and emergency...
...and emergency...

...and emergency...
...and emergency...
...and emergency...

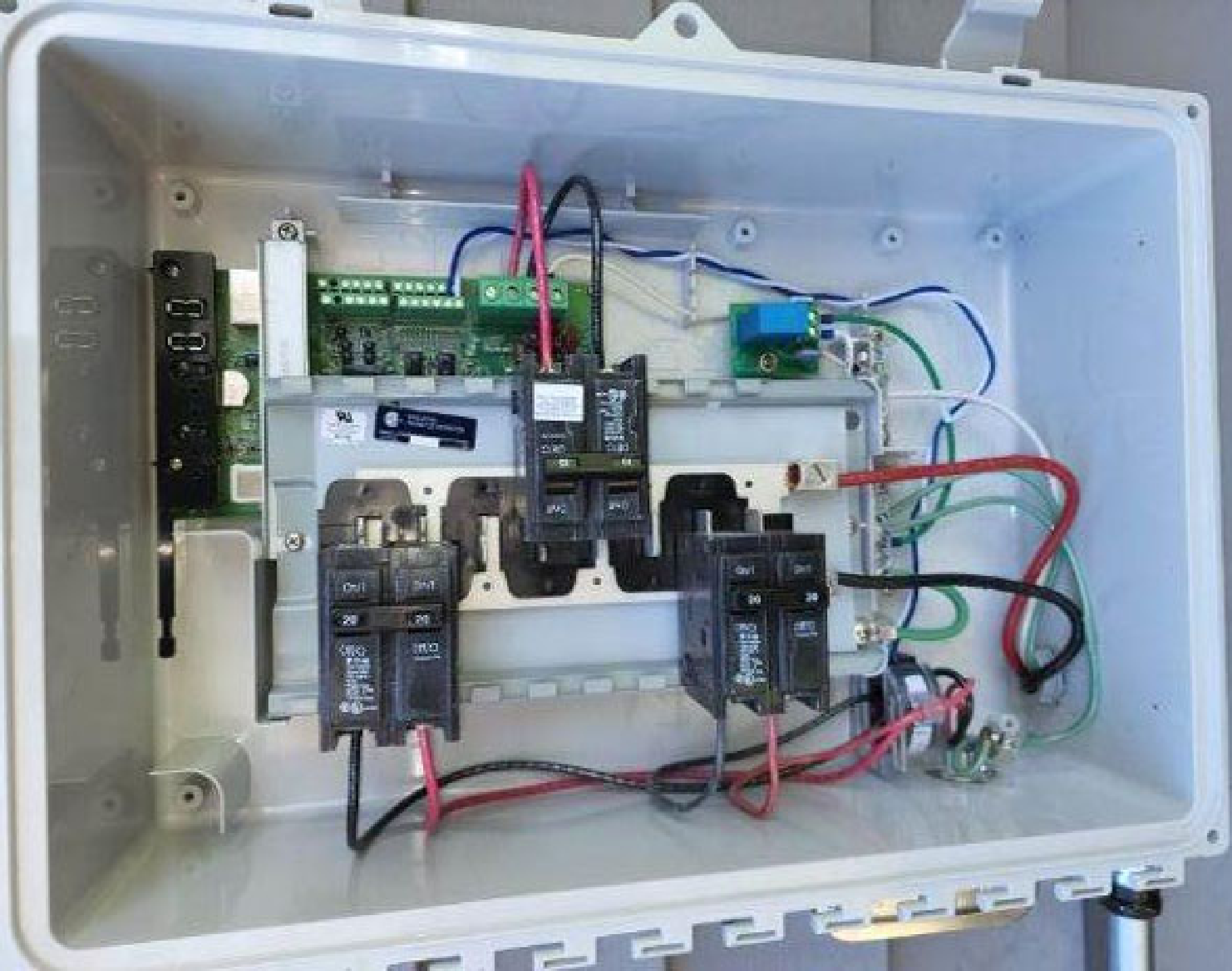
...and emergency...
...and emergency...
...and emergency...

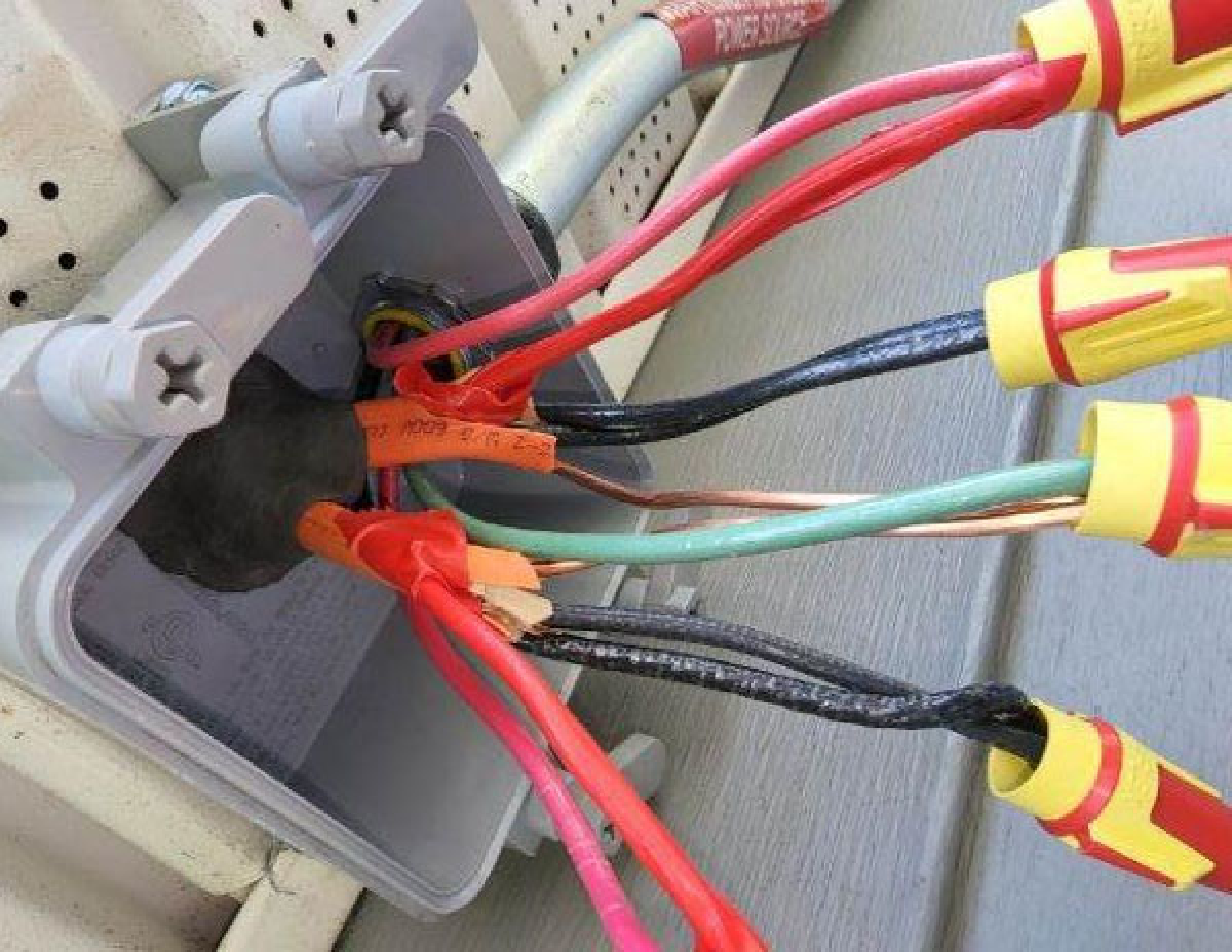
...and emergency...
...and emergency...
...and emergency...

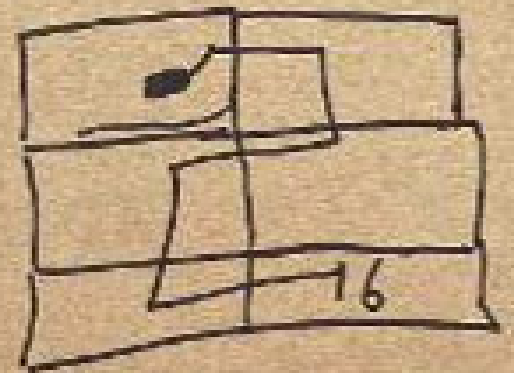
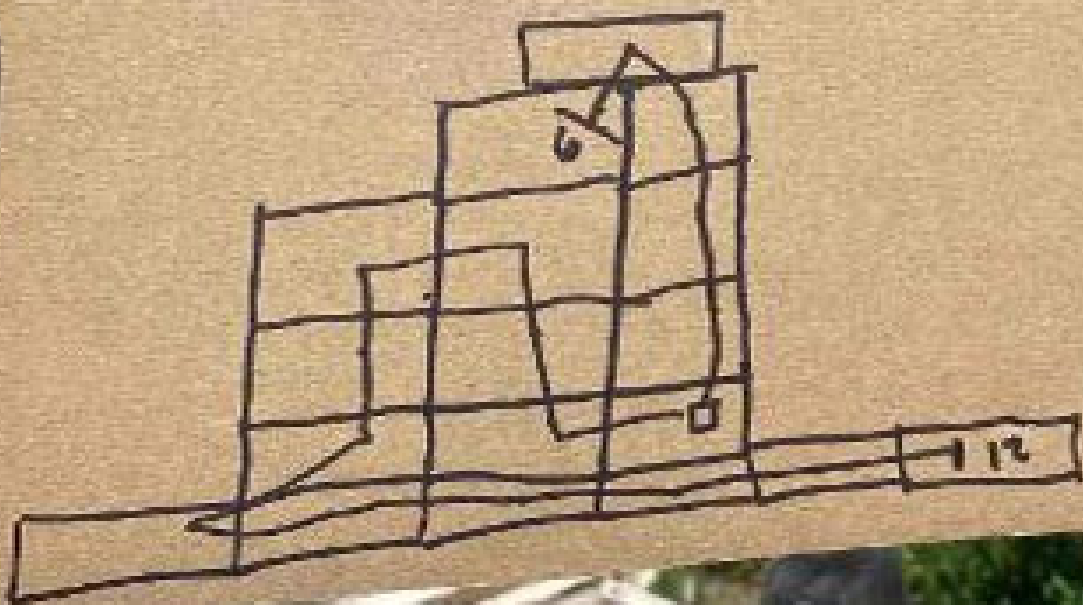


UL LISTED

115700000000









Success! Your ecobee
is now connected.

Press Next to continue
the set-up process.

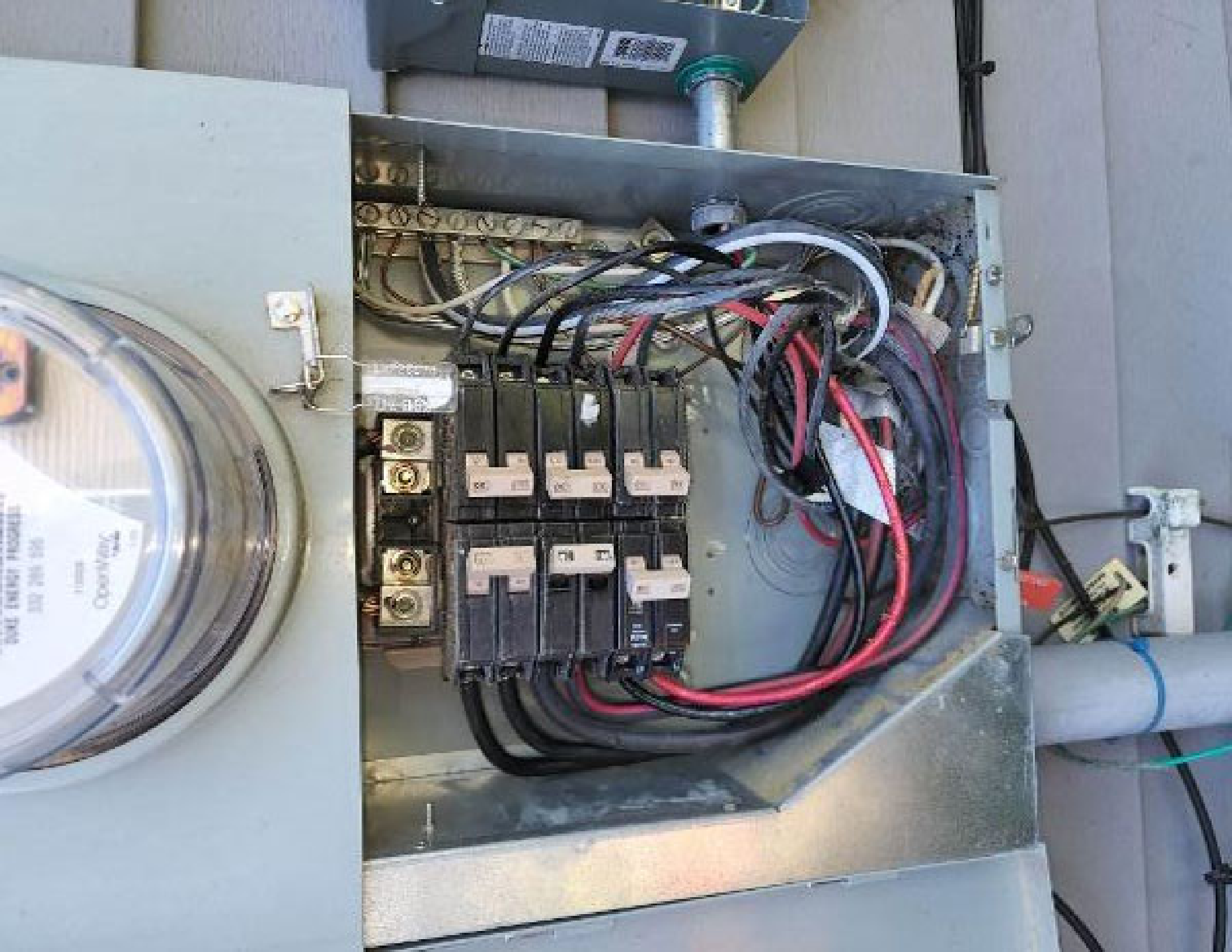
Back

Next

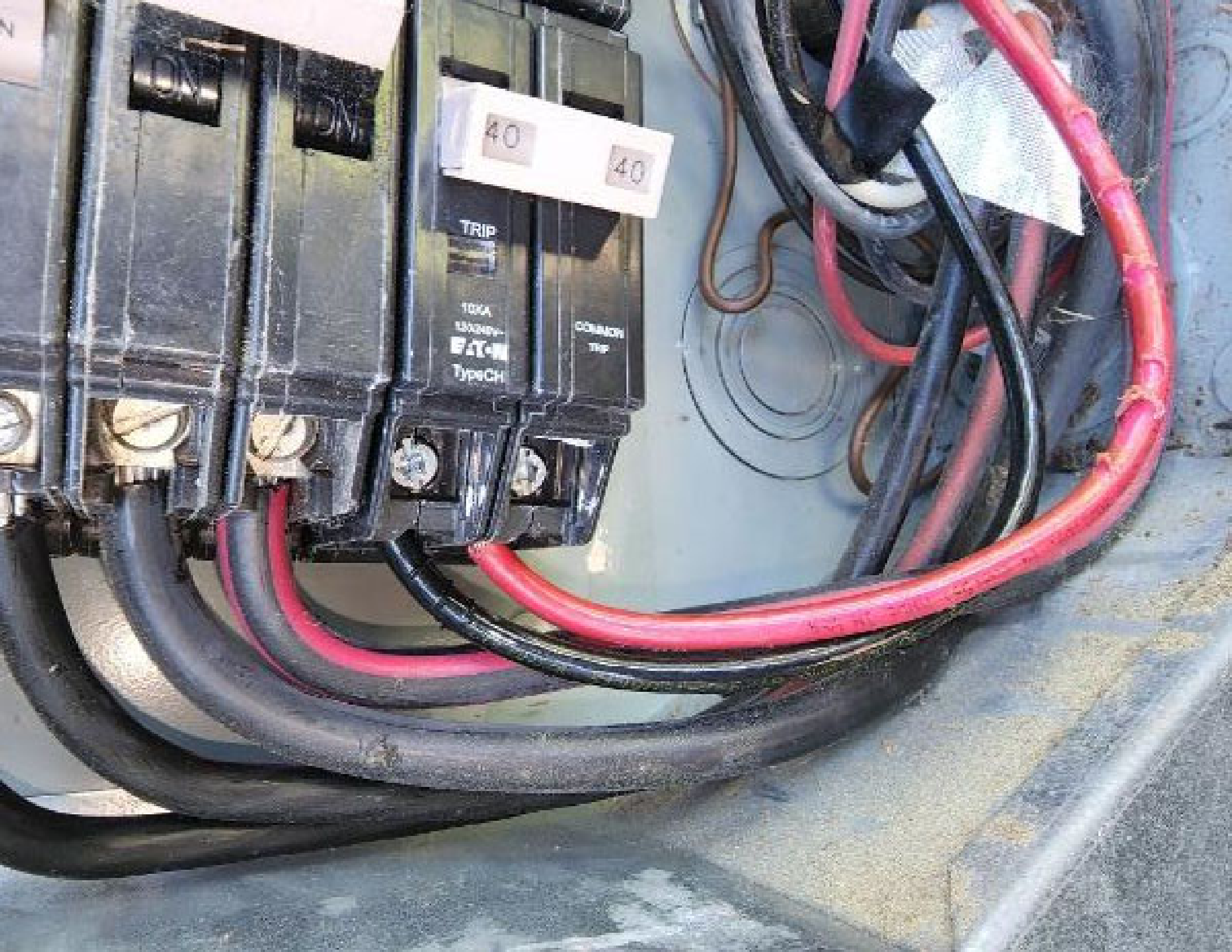
ecobee

SAVE ENERGY PROGRAM
302 266 506

Opportunity, Inc.







40

40

TRIP

100A
15000V
F.A.C.T.
Type CH

COMMON
TRIP



















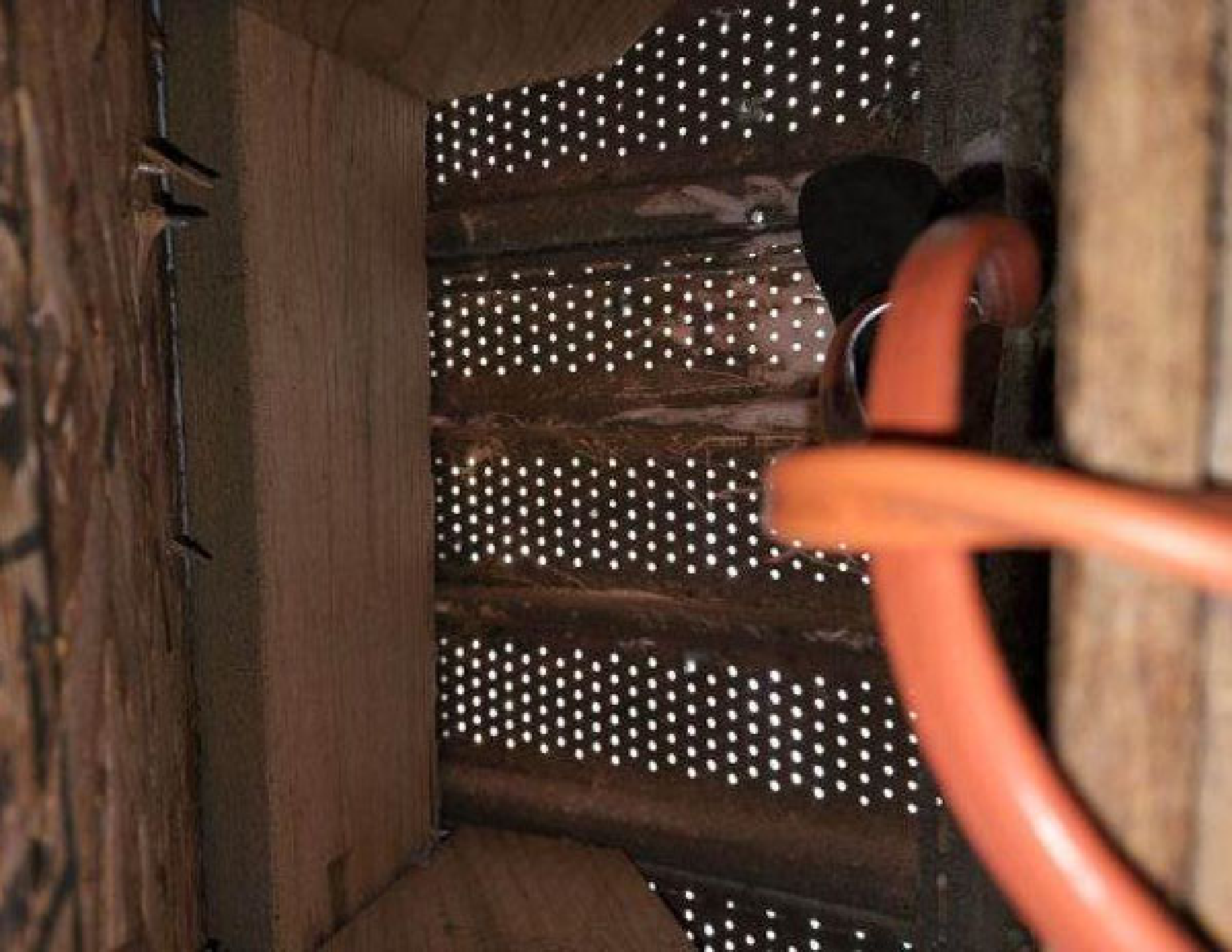












10VOLTAC
NURCE







