

EZ
SOLAR

JB-1.2

curtis little 8.03 kw

1507 micas way w sring lake nc



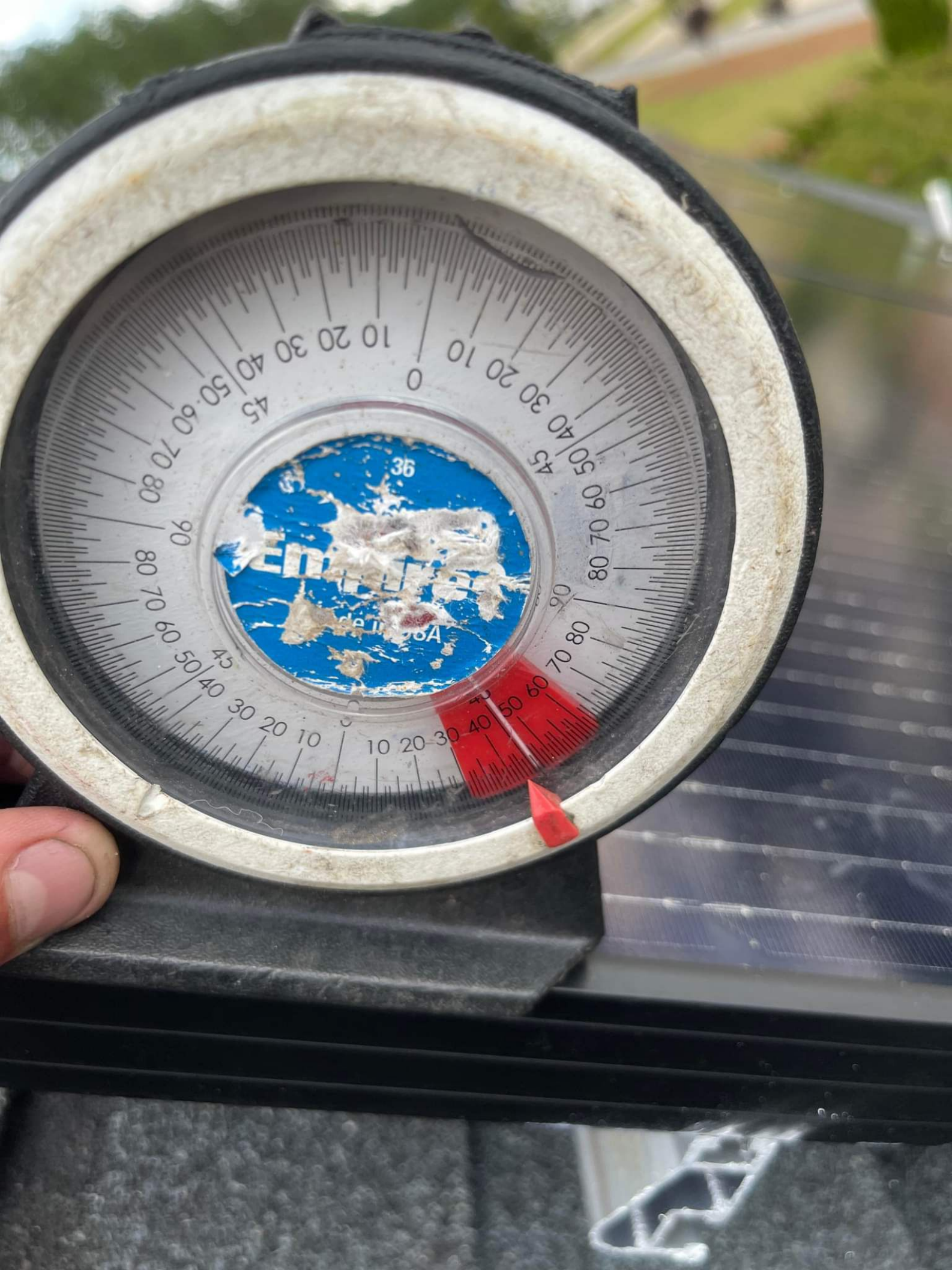


Lumber Liquidators.com

PHOTO FOR SOURCE WATER







0 10 20 30 40 50 60 70 80 90

0 10 20 30 40 50 60 70 80 90

0 10 20 30 40 50 60 70 80 90

0 10 20 30 40 50 60 70 80 90

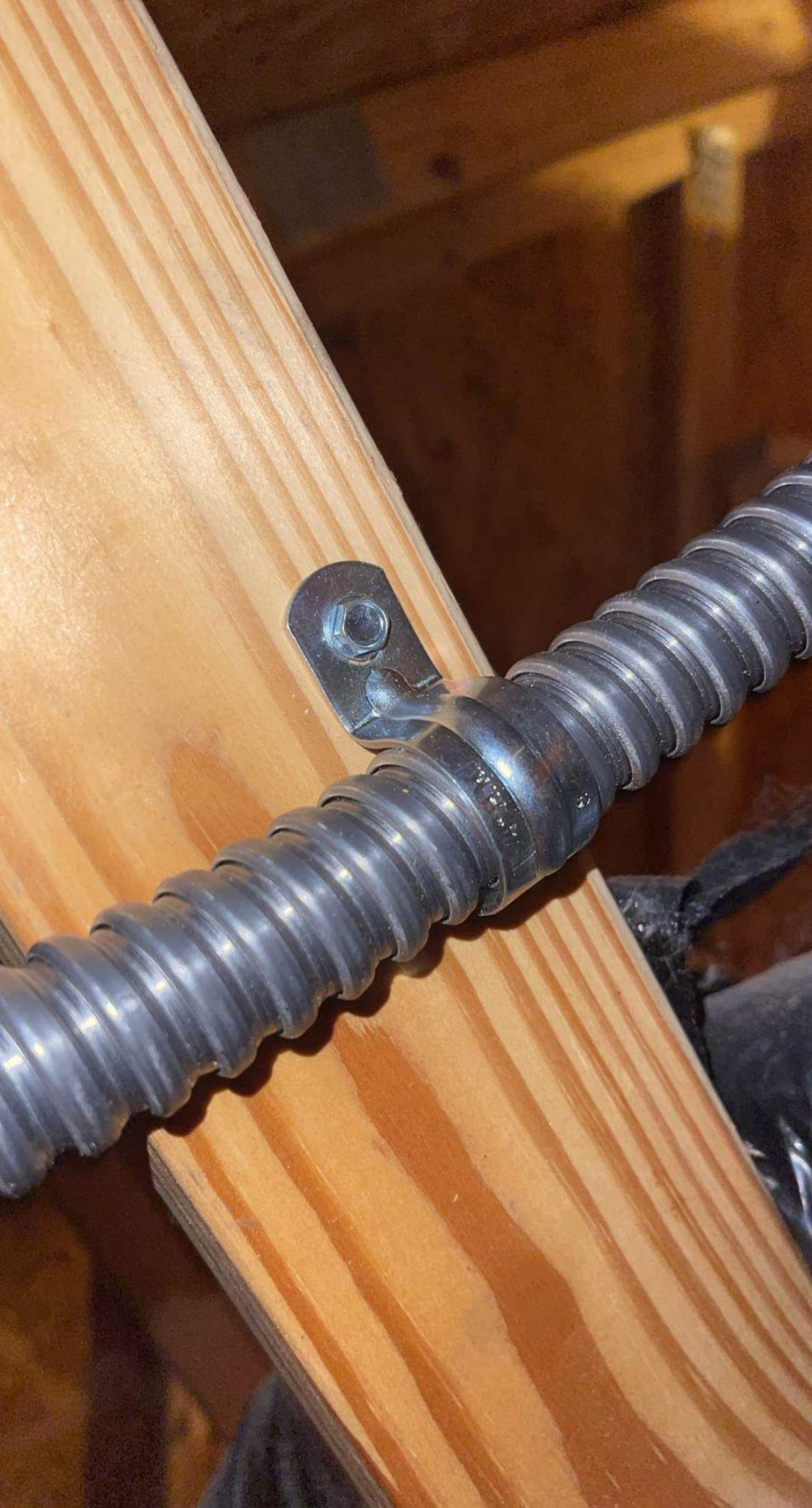
36

0 10 20 30 40 50 60 70 80 90

FAA









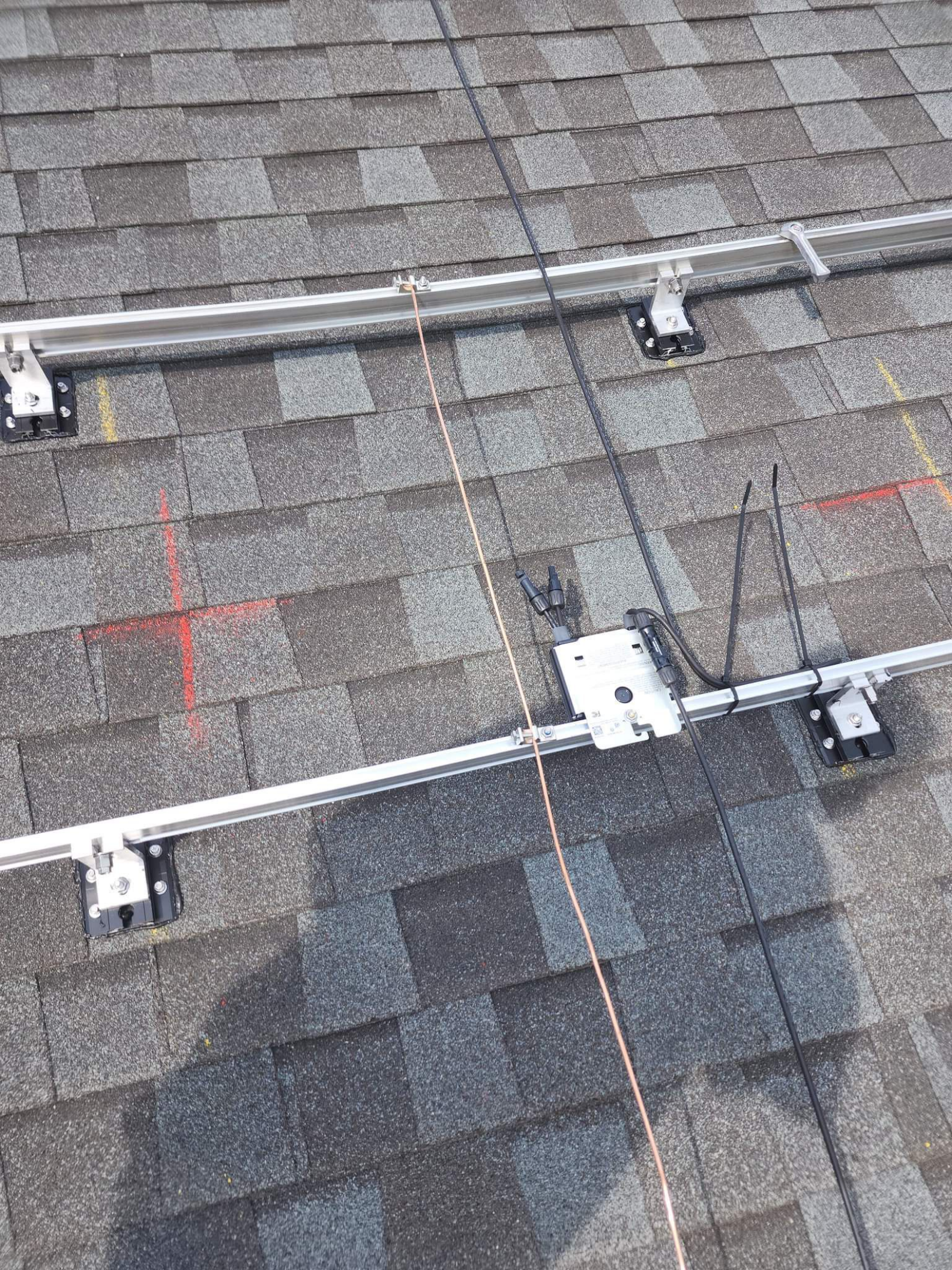


**WARNING: PI
POWER**

596-03942









Do Not Remove
 156DA909-34
 Solaredge Technologies GmbH/
 Werner-Eckert-Strabe 6/81829 Munich/Germany
 4004390
 InterTEK
 ETL
 156DA909-34

CAUTION

HOT SURFACES-TO REDUCE THE RISK OF BURNS-DO NOT TOUCH. RISK OF ELECTRIC SHOCK-WHEN THE PHOTOVOLTAIC ARRAY IS EXPOSED TO LIGHT, IT SUPPLIES A DC VOLTAGE TO EQUIPMENT. COVER PV MODULE WITH OPAQUE MATERIAL BEFORE CONNECTING OR DISCONNECTING THIS OPTIMIZER. DURING FAULT, ZERO CURRENT IS SOURCED INTO DC ARRAY BY CONVERTER.

WARNING

ELECTRIC SHOCK HAZARD. THE DC CONDUCTORS OF THIS PHOTOVOLTAIC SYSTEM ARE UNGROUNDED AND MAY BE ENERGIZED.

AVERTISSEMENT

RISQUE DE CHOC ELECTRIQUE: QUAND LE CHAMP PHOTOVOLTAIQUE EST EXPOSE A LA LUMIERE, UNE TENSION CC EST FOURNIE A CET EQUIPEMENT. SURFACES CHAUDES: NE PAS TOUCHER, AFIN DE REDUIRE LES RISQUES DE BRULURES LE COURANT DE RETOUR INJECTE PAR LE CONVERTISSEUR EN CAS DE DEFAILLANCE DANS LE MODULE PV EST TOUJOURS NUL.



STOP!



105°C DRY







ESTE LADO PARA

ROOF CLIPS
RECOMMENDED
SE RECOMIENDAN
PARA TENDAS



