

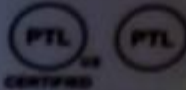


www.SOLARIA.com

**PowerXT- 400R-PM**

Peak Power	(Pmax)	400 W
Power Tolerance		-0 / +3%
Voltage at Pmax	(Vmp)	42.4 V
Current at Pmax	(Imp)	9.41 A
Open Circuit Voltage (Voc)	(Voc)	51.1 V
Short Circuit Current (Isc)	(Isc)	9.82 A
Maximum Series Fuse		20 A

All ratings at standard test conditions: 1000 W/m<sup>2</sup>, AM 1.5 spectrum, 25°C.  
Panel connectors: use with 12 AWG copper wires insulated to 30°C max.



**WARNING**  
**ELECTRICAL HAZARD**

Read and comply with Product Installation Manual

All PTL Solar Panels are Class 2, UL Type 1  
Approved Under E

See Installation Manual for  
Installation Requirements for  
Address a Specific System PTL  
Always Start with the Product



101002100040488

Manufacturer Part Number: 101002100040488

Made in Taiwan









**WARNING** ELECTRIC SHOCK HAZARD. THE DC CONDUCTORS OF THIS PHOTOVOLTIC SYSTEM ARE UNGROUNDING AND MAY BE ENERGIZED.

**CAUTION** TO REDUCE THE RISK OF ELECTRIC SHOCK, DO NOT TOUCH THE PHOTOVOLTAIC AREA IS EXPOSED TO LIGHT IT SUPPLIES A DC VOLTAGE TO EQUIPMENT COVER BY MODULE WITH DISCONNECT COVER BY DISCONNECTING THIS SWITCH. ZERO CURRENT IS SOURCED INTO DC ARRAY BY CONVERTER DURING FAULT.

**AVERTISSEMENT** RISQUE DE CHOC ELECTRIQUE. LE CHAMP SYSTEME SONT UNGROUNDING ET PEUT ETRE ENERGISE.

TOUJOURS NE PAS TOUCHER LES CONDUCTEURS DE BRULURES LE COURANT SANS LA COUVERTURE PV EST TOUJOURS NE PAS TOUCHER LES CONDUCTEURS DE BRULURES LE COURANT SANS LA COUVERTURE PV EST

Do Not Remove  
2188093-88  
EITL  
Intertek  
4004350

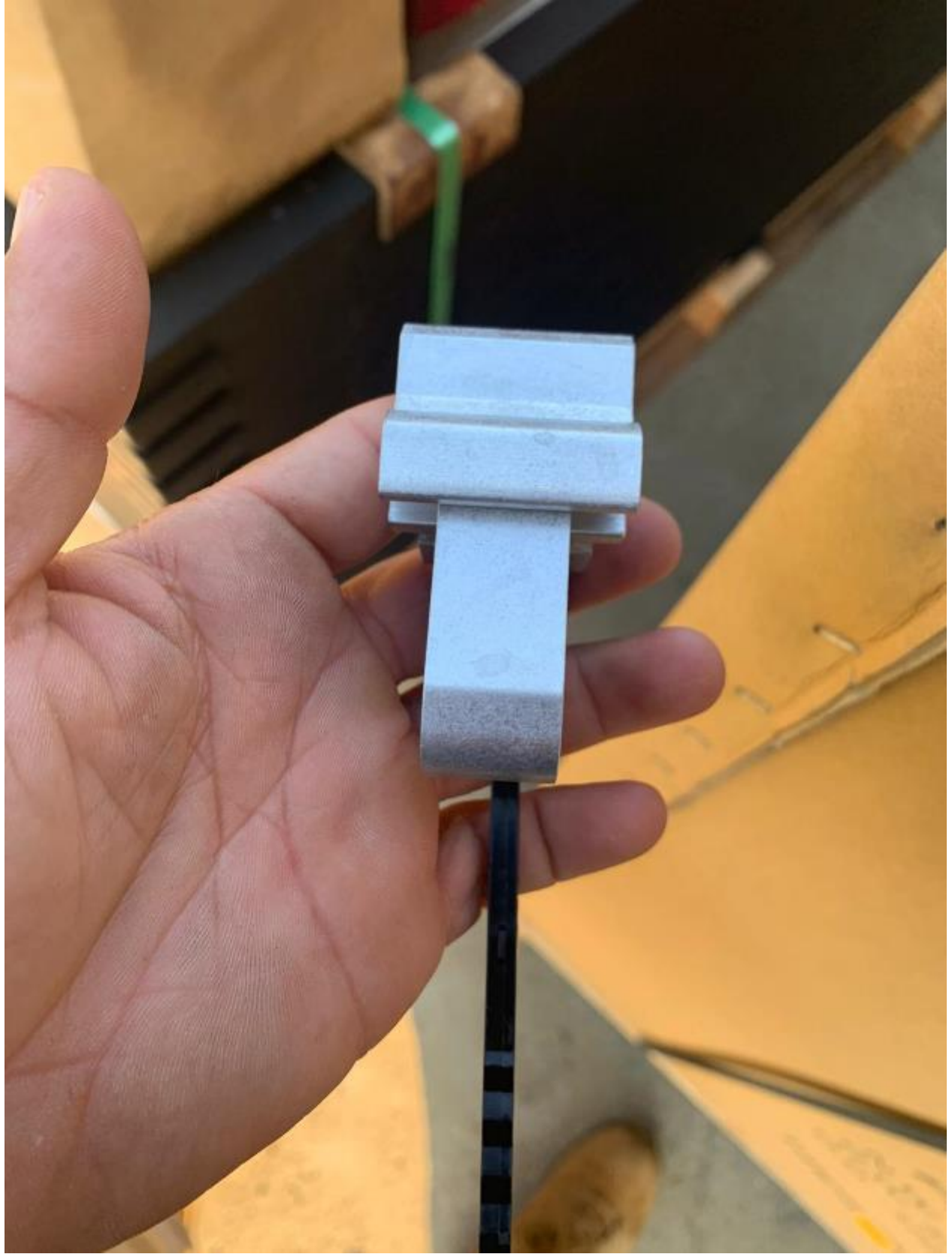
FC















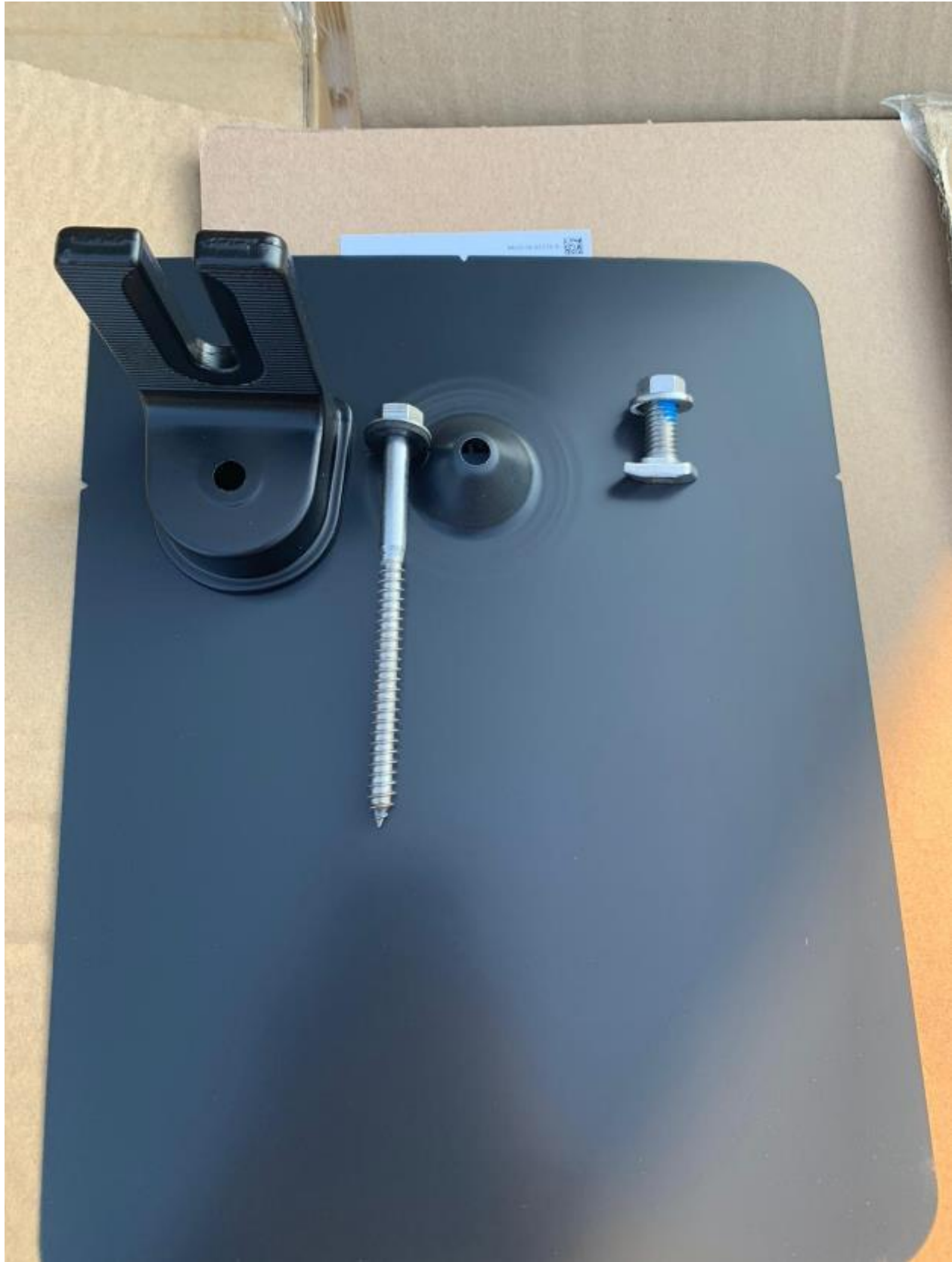














**CAUTION** RISK OF ELECTRIC SHOCK - WHEN THE PHOTOVOLTAIC ARRAY IS EXPOSED TO LIGHT, IT SUPPLIES A DC OUTPUT TO EQUIPMENT. COVER BY MODULE WITH ORIGINAL BEFORE CONNECTING THIS CONVERTER. DURING FAULT, 2550 CURRENT IS SOURCED INTO DC AREA BY CONVERTER.

**WARNING** ELECTRIC SHOCK HAZARD. THE DC CONDUCTORS OF THIS PHOTOVOLTAIC SYSTEM ARE UNSHIELDED AND MAY BE EXPOSED.

**AVERTISSEMENT** RISQUE DE CHOC ELECTRIQUE. D'UN CÂBLE DE CHARGE PHOTOVOLTAIQUE EST EXPOSÉ À LA LUMIÈRE, UNE TENSION CC EST FOURNIE À CET ÉQUIPEMENT. S'IL FAUT LES BRANCHER, NE PAS TOUCHER, AFIN DE NE PAS ÊTRE BLESSÉ PAR LE COURANT DE LA SORTIE. EN CAS DE DÉFAILLANCE, DANS LE MODULE PV EST TOUJOURS UN.

DO NOT REMOVE

FC

UL

Do Not Remove

QR Code





PEGASUS  
SOLAR

END PANEL



PRS  
21-2

C US A

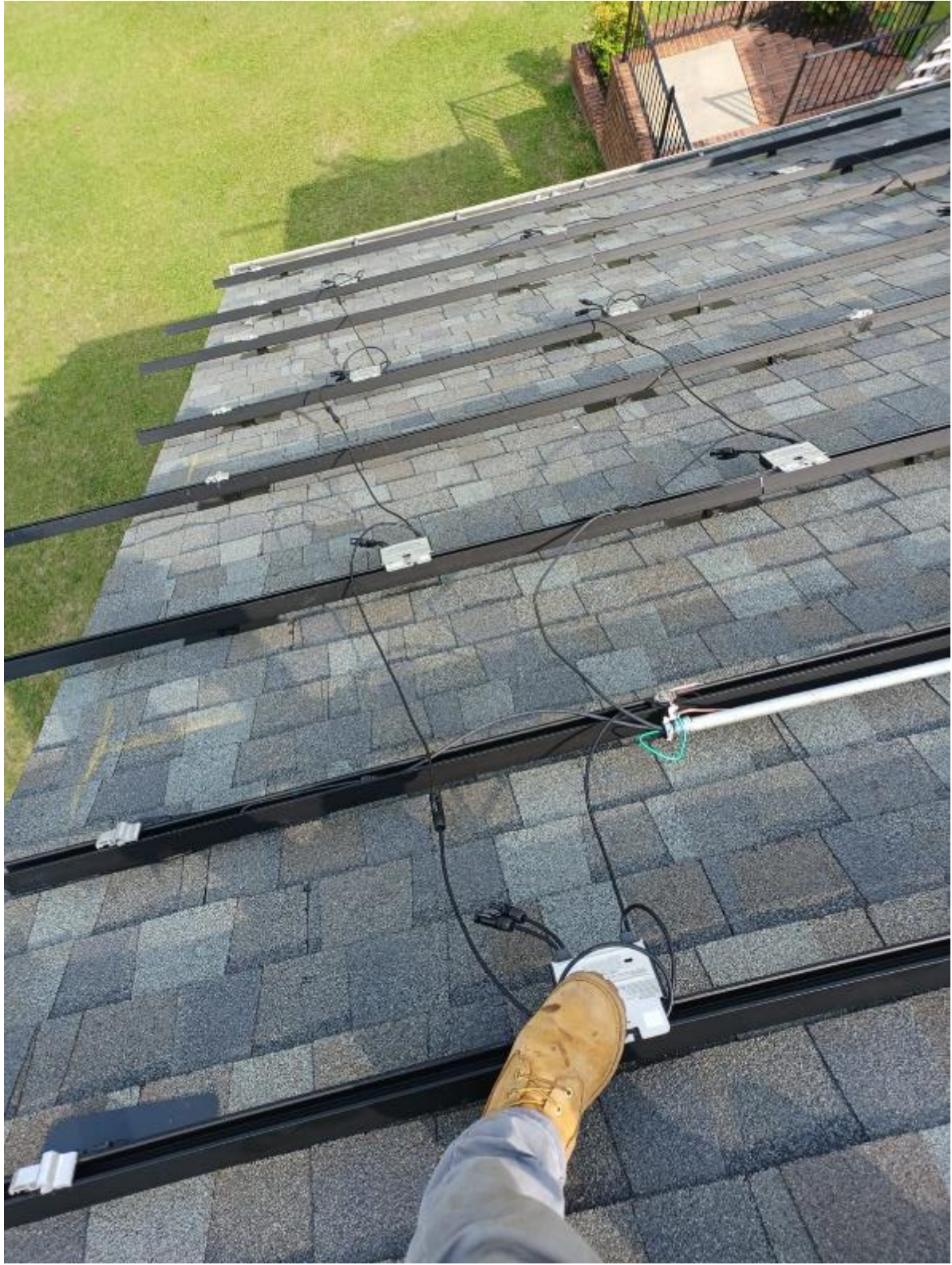


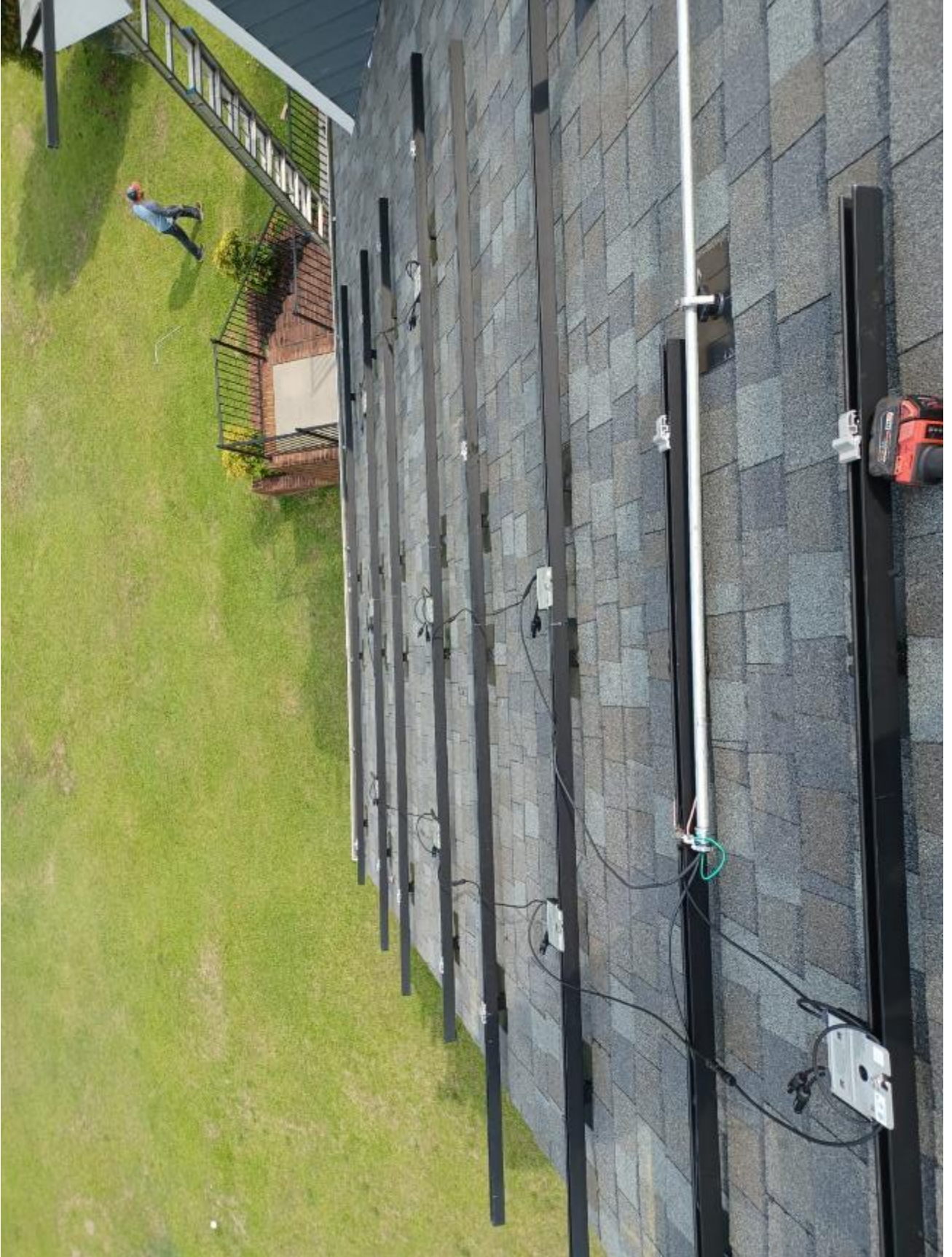


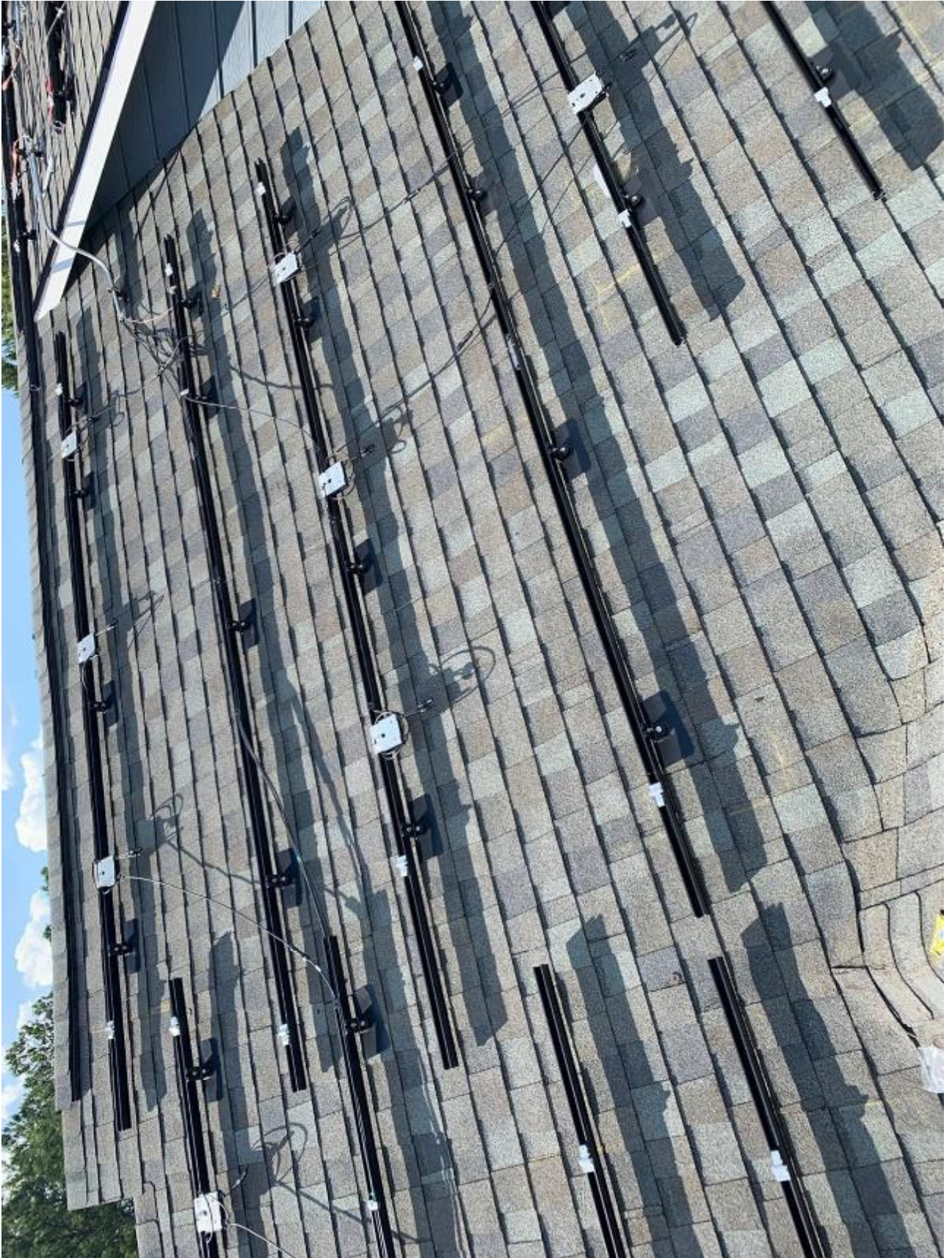




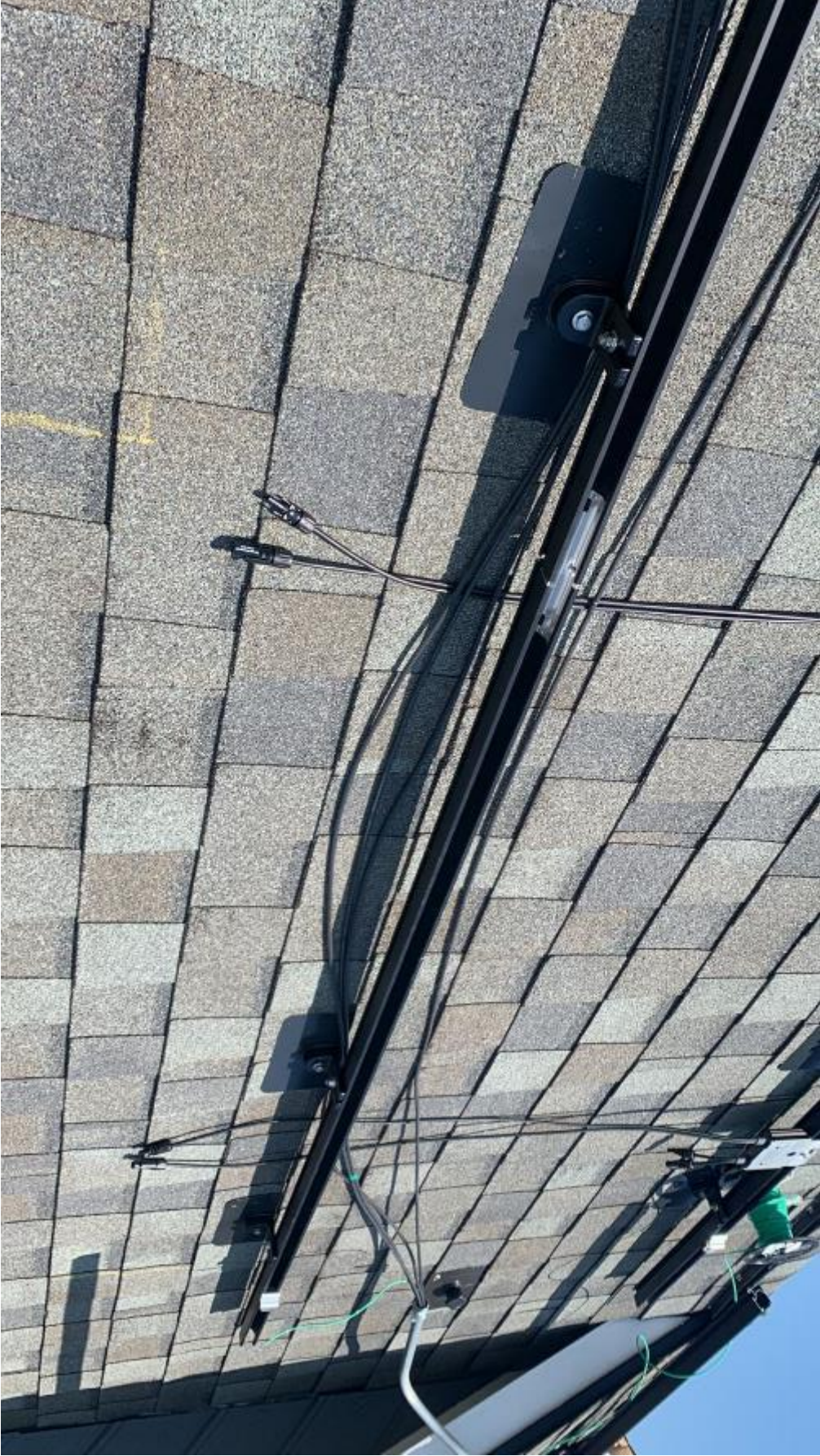


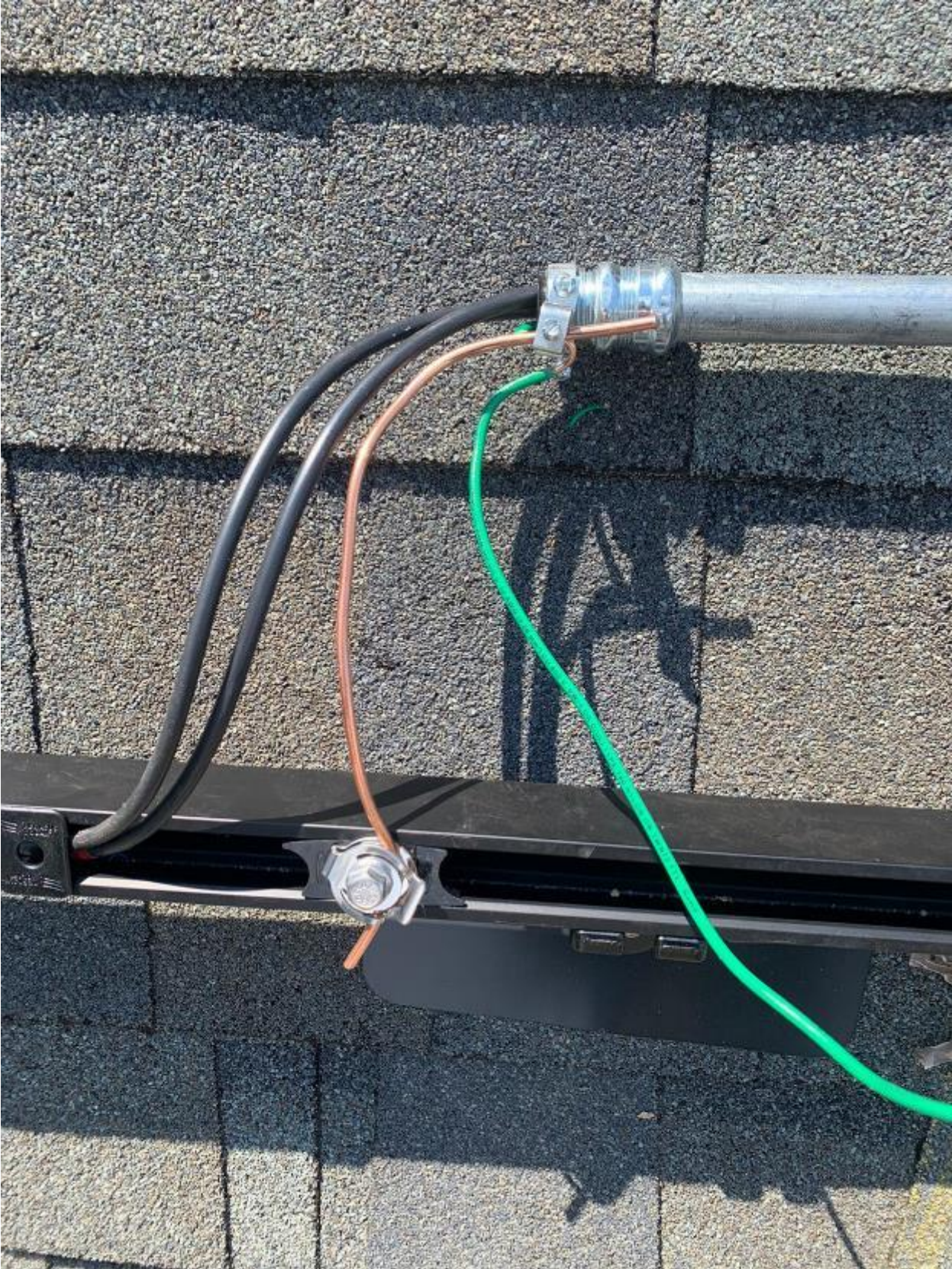














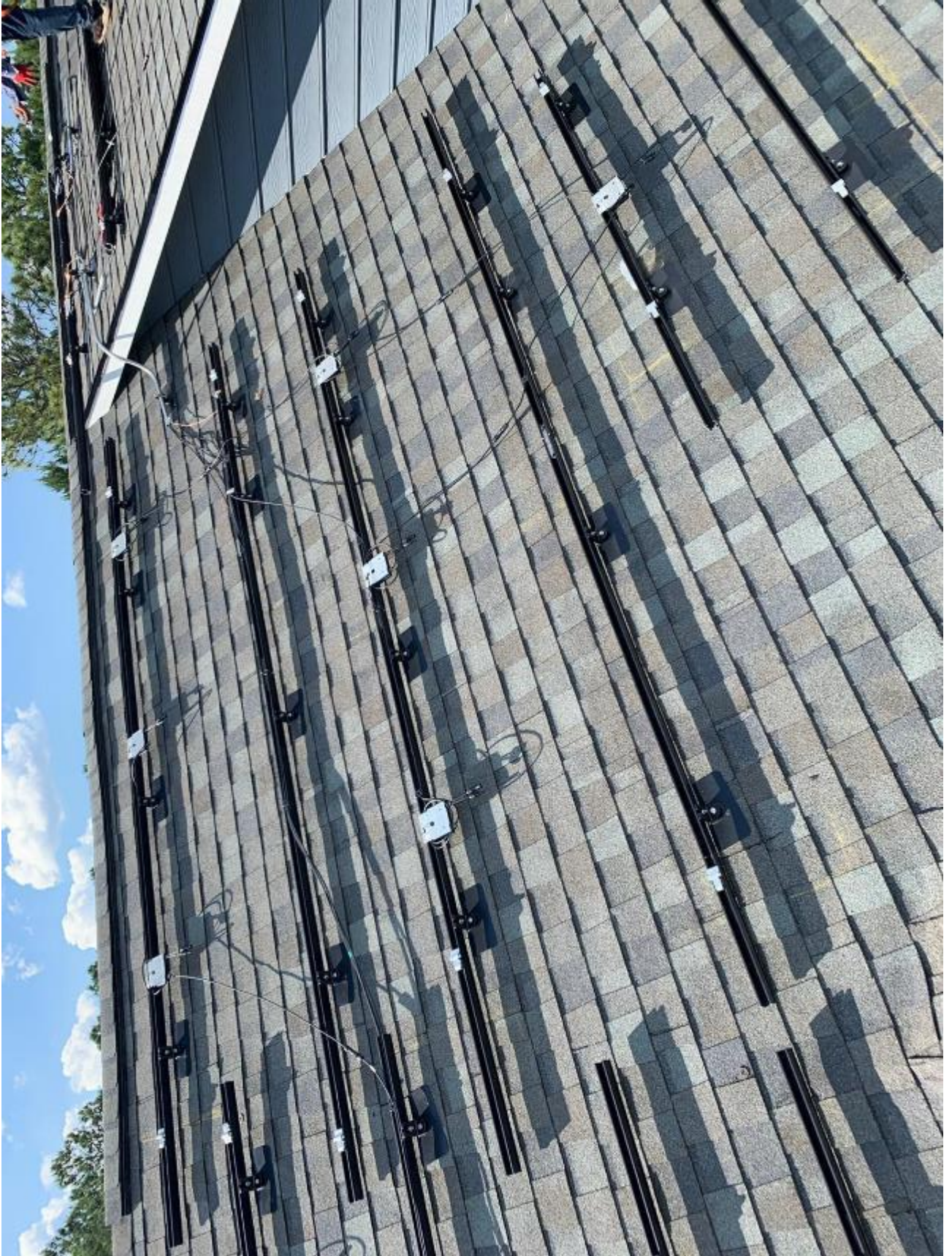


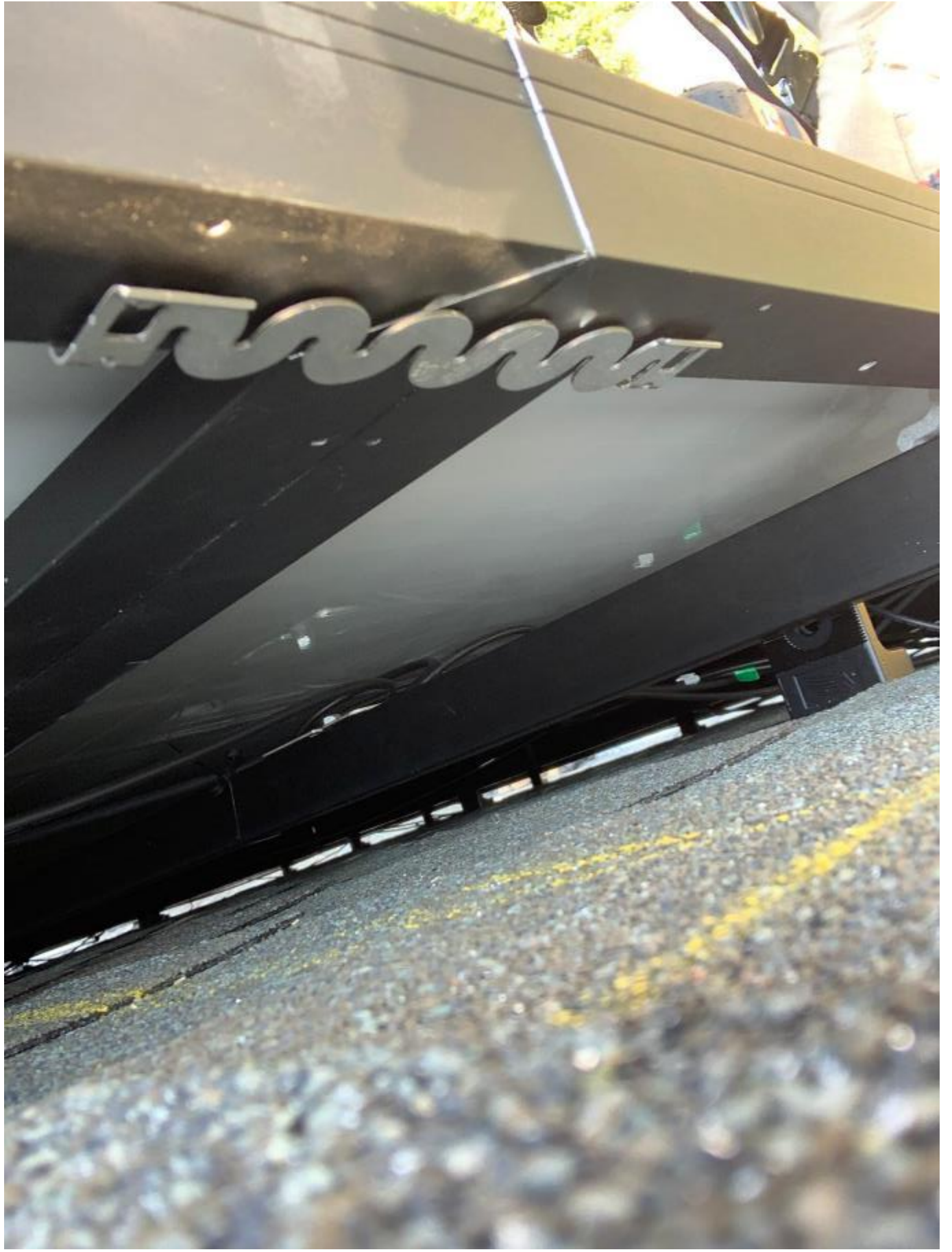


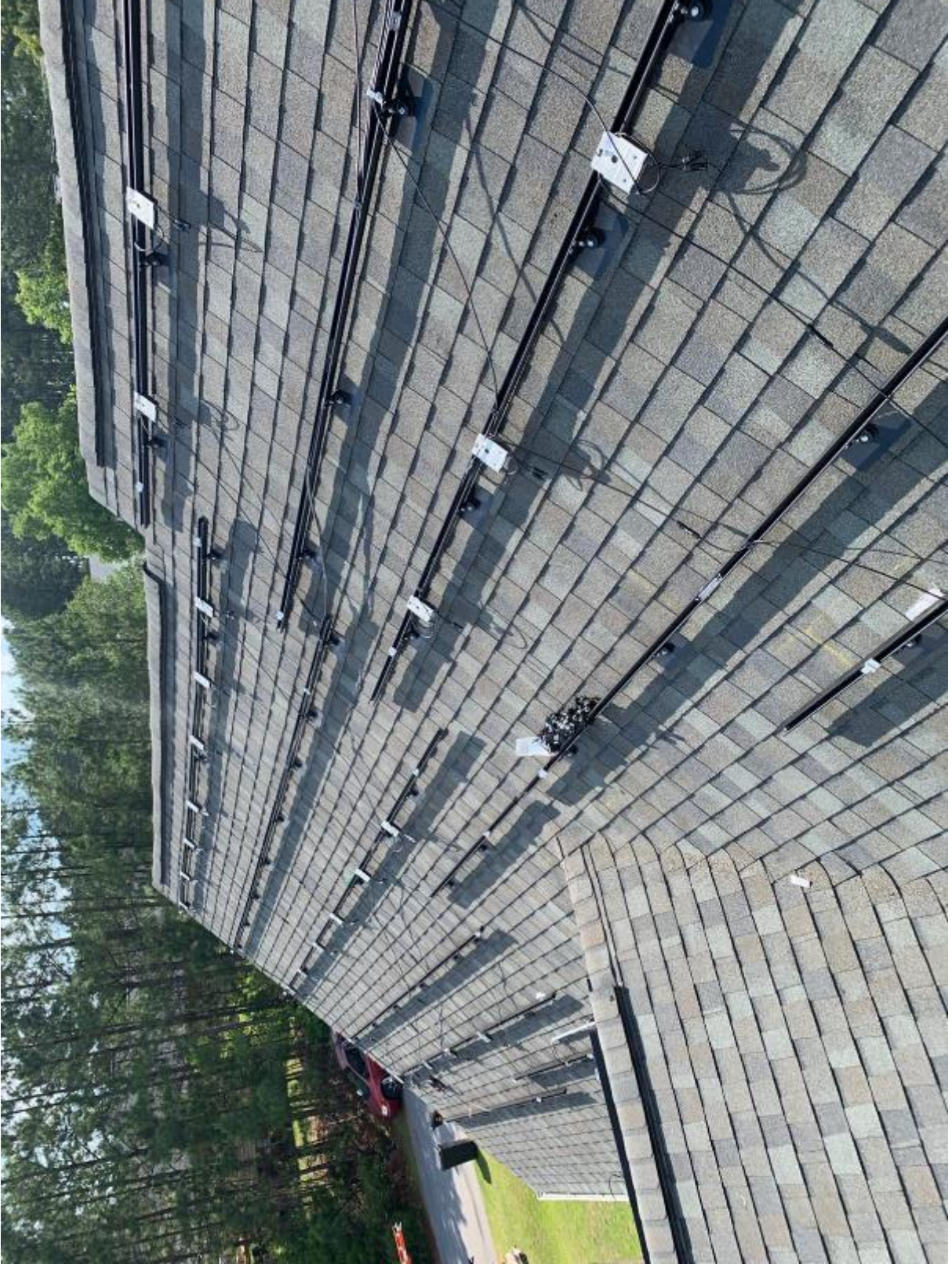




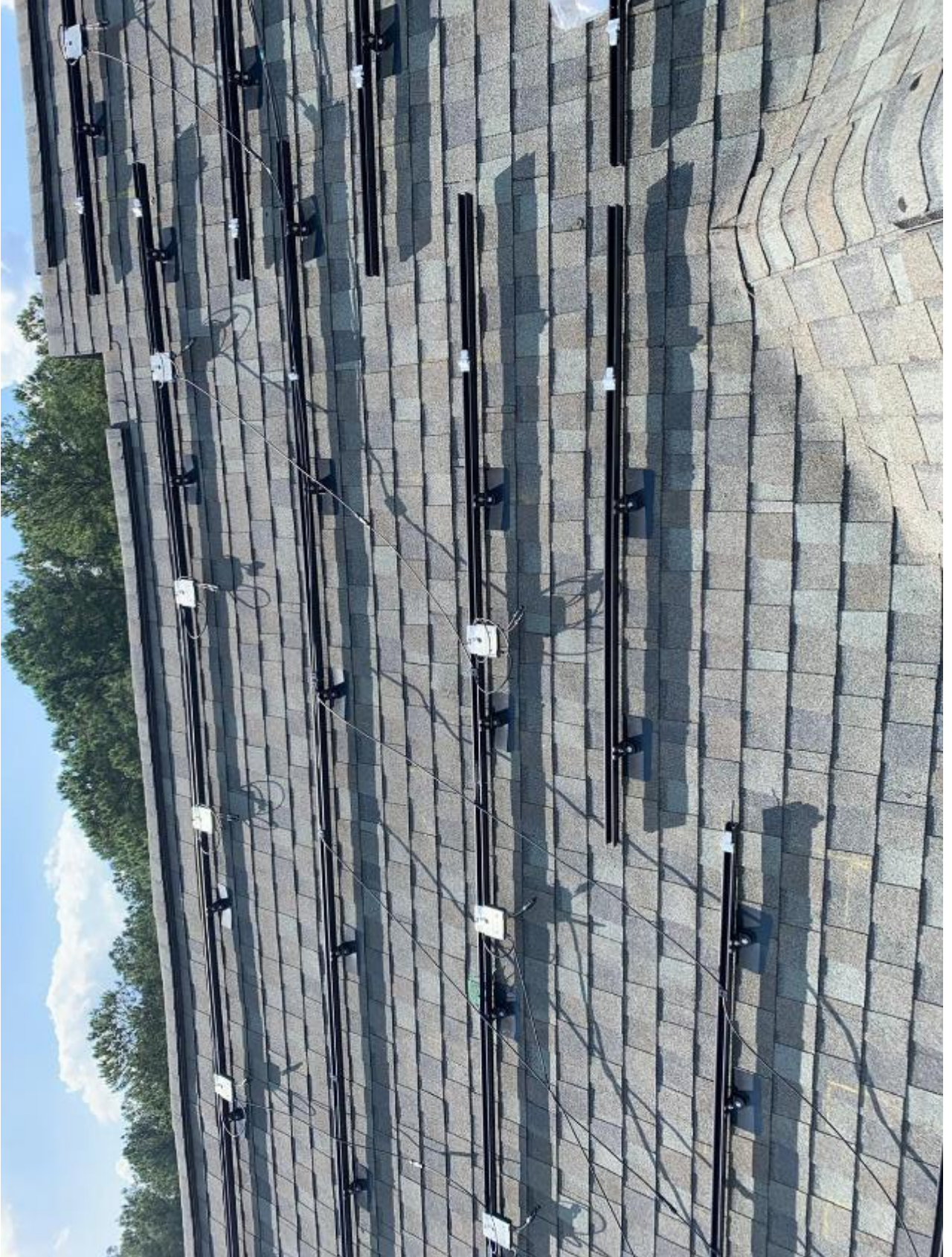




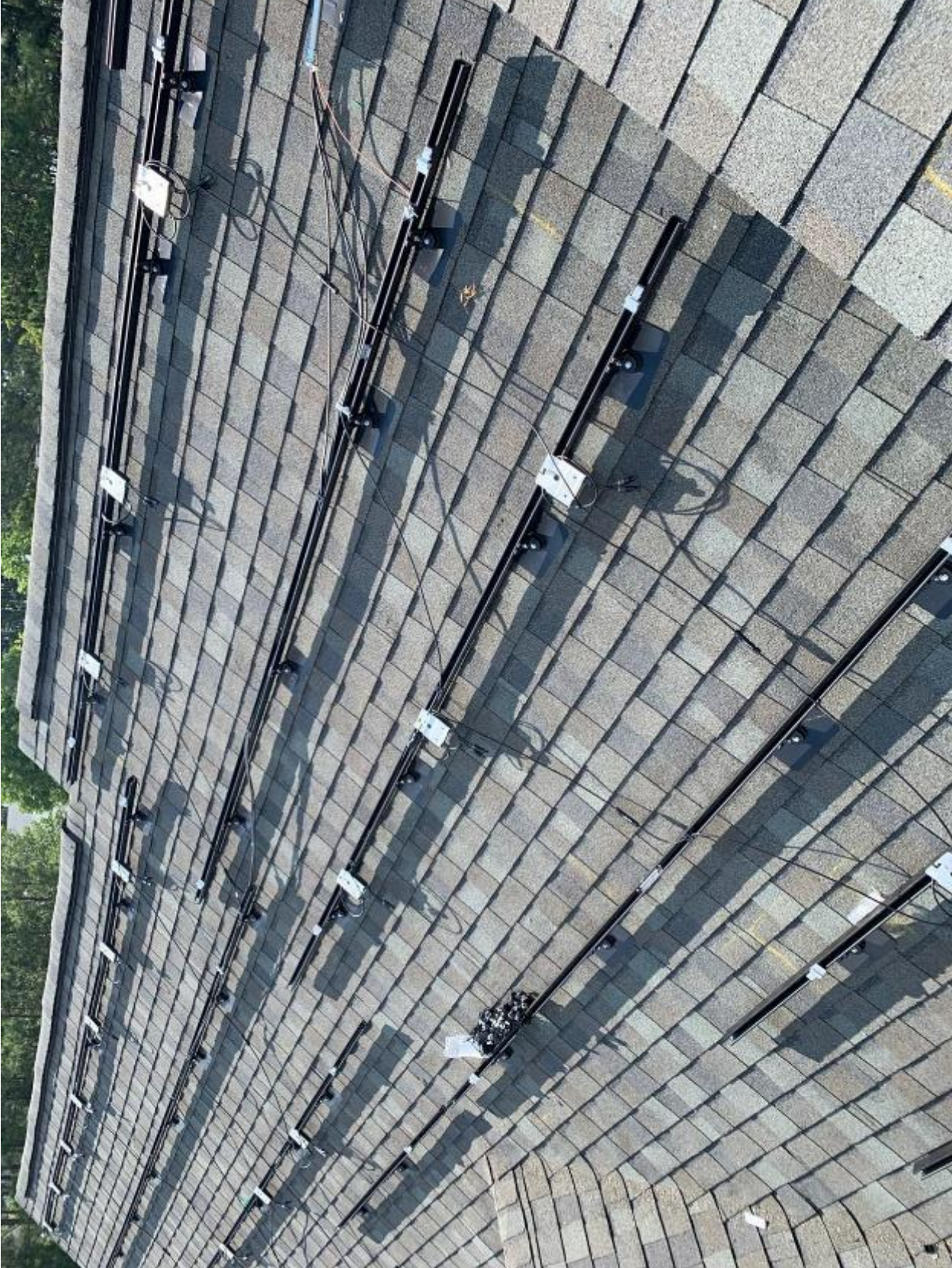




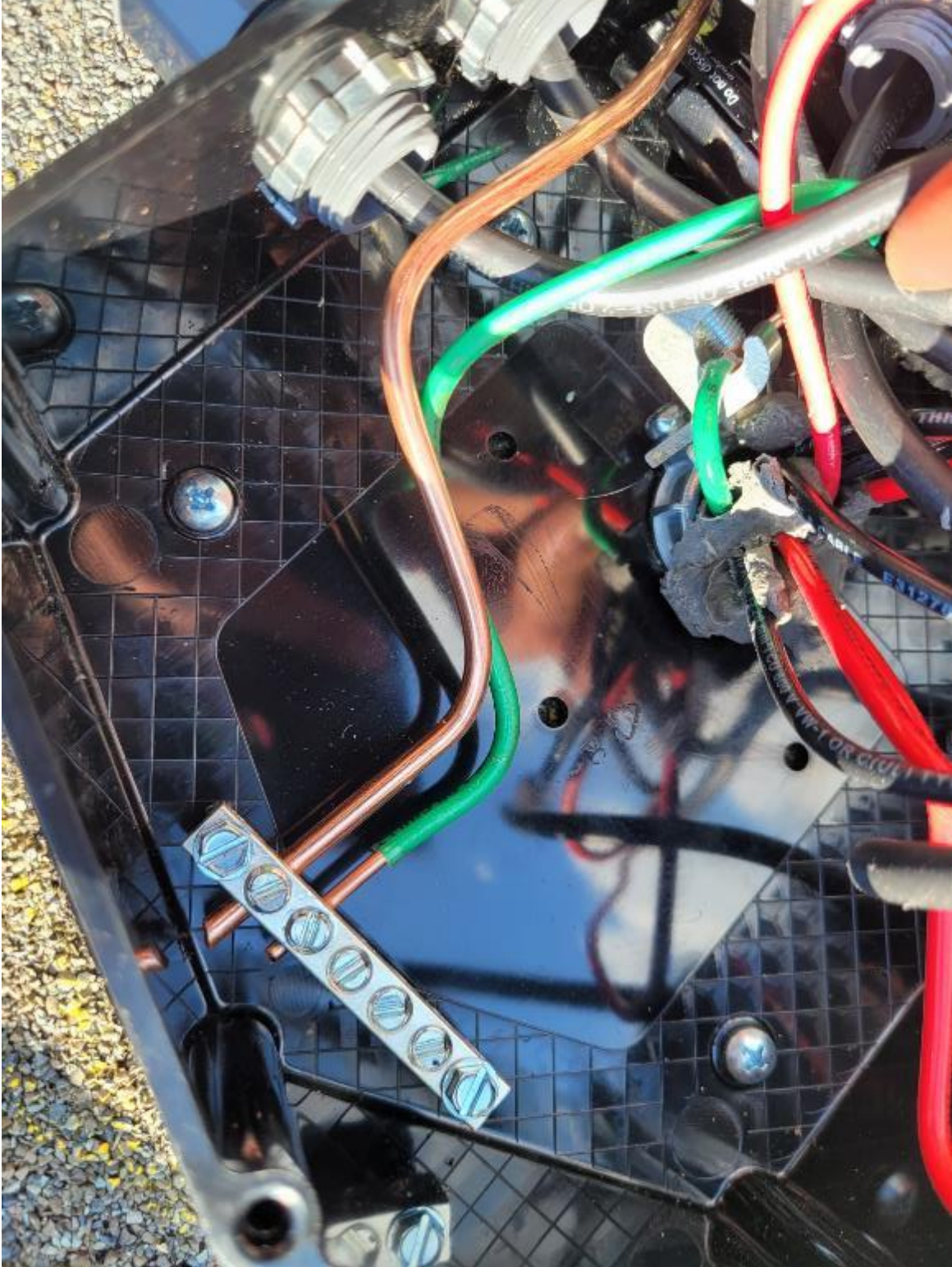










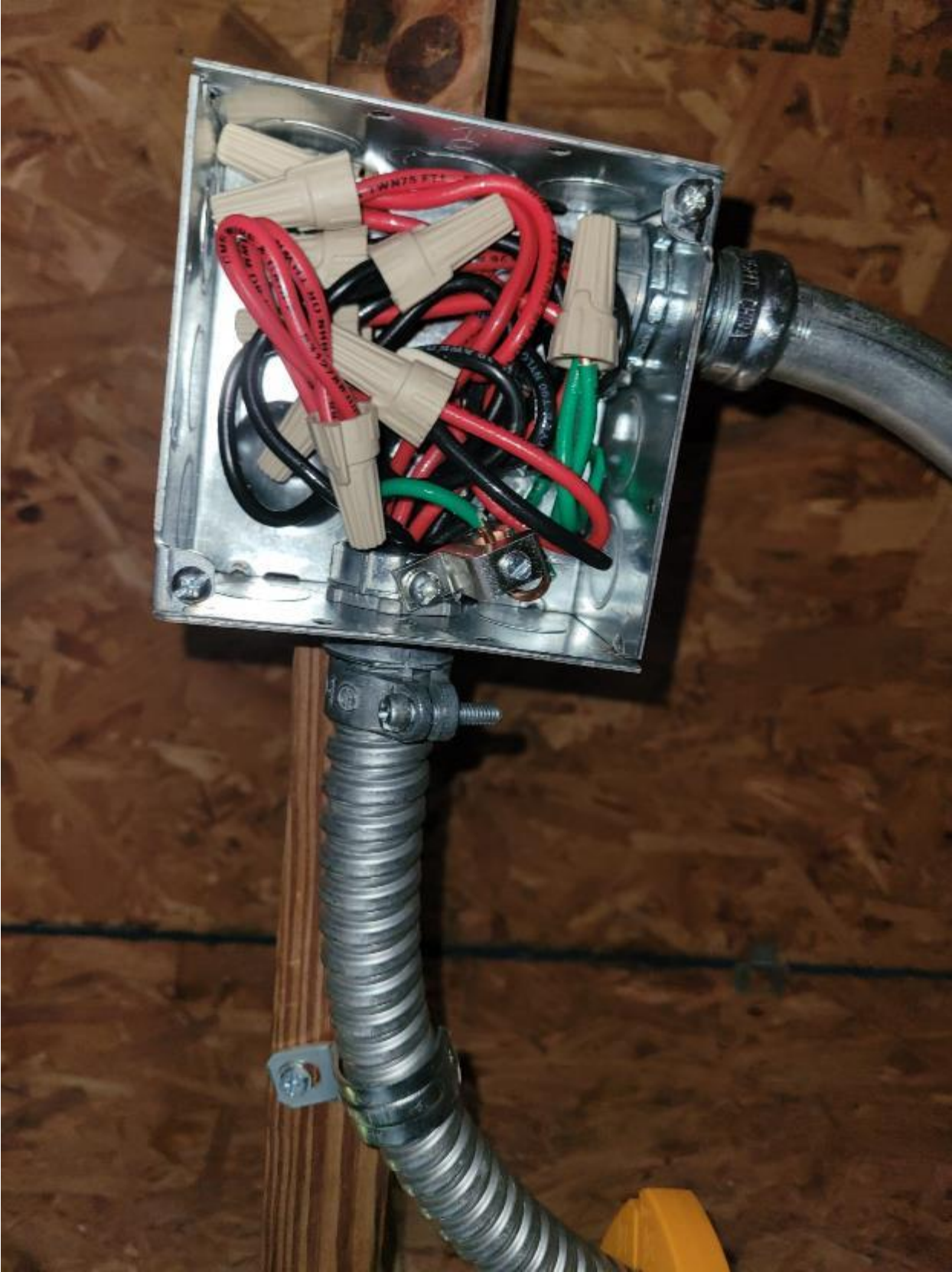






















**SOLAR AC DISCONNECT LOCATED AT**

**NIIFE SWITCH DISCONNECT NEXT TO METER**

pdlabels.com 89-114803A

**⚠ WARNING**  
ELECTRIC SHOCK HAZARD  
TERMINALS ON THE LINE AND  
LOAD SIDES MAY BE ENERGIZED  
IN THE OPEN POSITION

pdlabels.com 65-215



**⚠ WARNING**  
DUAL POWER SUPPLY  
SOURCES: UTILITY GRID AND  
PV SOLAR ELECTRIC SYSTEM

pdlabels.com 86-211





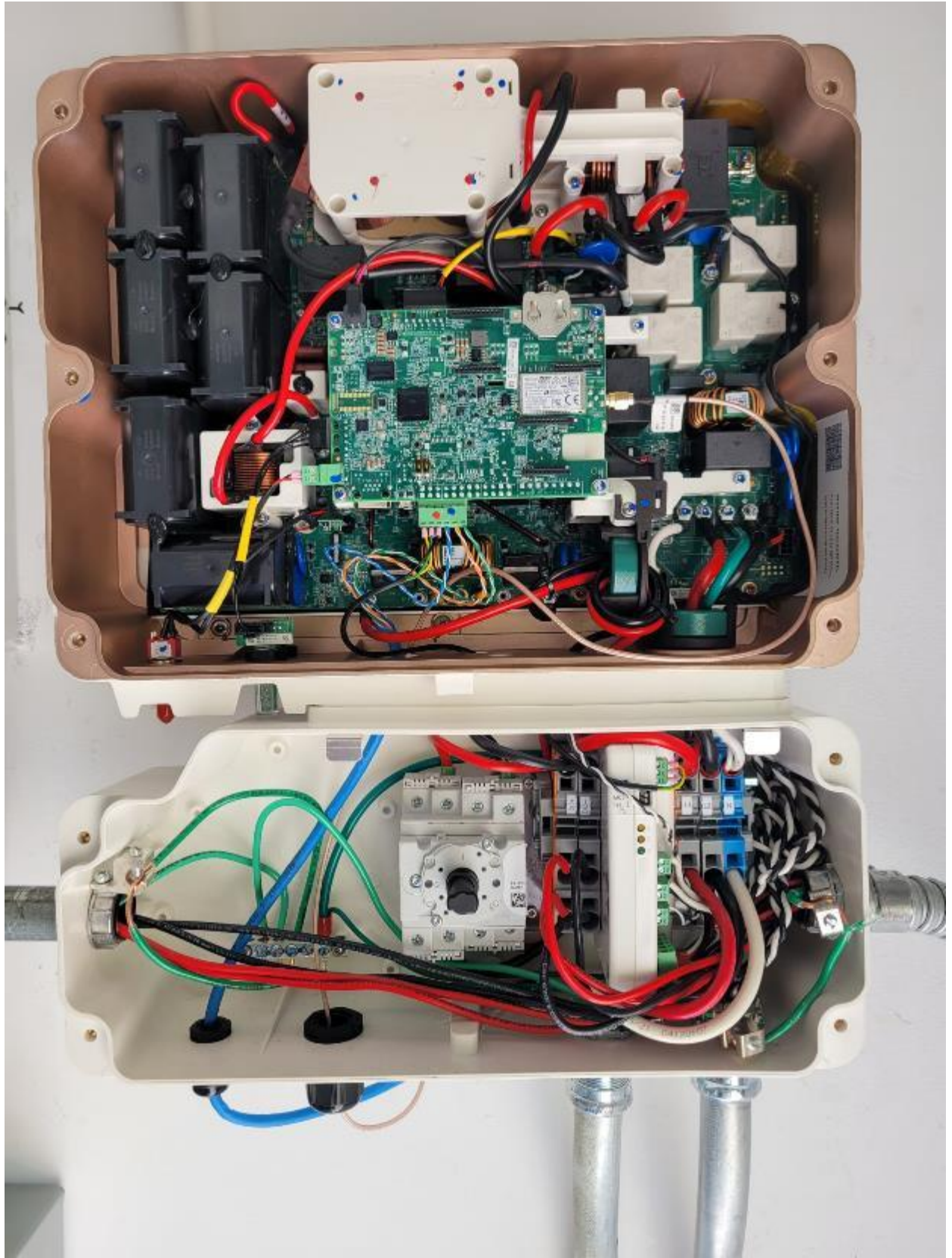
THIS IS AN ACCUMULATOR PANEL  
DO NOT INSTALL ADDITIONAL LOADS WITHOUT AN ENGINEER'S LETTER

"FOLLOWER" INVERTER

"LEADER" INVERTER

551935  
201707









LEADER WAVE

**WARNING**  
BIPOLAR PHOTOVOLTAIC ARRAY  
DISCONNECTION OF NEUTRAL  
GROUNDED CONDUCTORS MAY  
RESULT IN OVERVOLTAGE ON  
ARRAY OR INVERTER

**WARNING**  
DUAL POWER SUPPLY  
SOURCES: UTILITY GRID AND  
PV SOLAR ELECTRIC SYSTEM

MAXIMUM VOLTAGE  
MAXIMUM CIRCUIT CURRENT  
MAX. SAFETY JUNCTION CURRENT  
OF THE CHARGE CONTROLLER OR  
DC-TO-DC CONVERTER (IF INSTALLED)

solar edge wave

PHOTOVOLTAIC  
DC DISCONNECT

OFF

FOLLOWER WAVE

**WARNING**  
BIPOLAR PHOTOVOLTAIC ARRAY  
DISCONNECTION OF NEUTRAL  
GROUNDED CONDUCTORS MAY  
RESULT IN OVERVOLTAGE ON  
ARRAY OR INVERTER

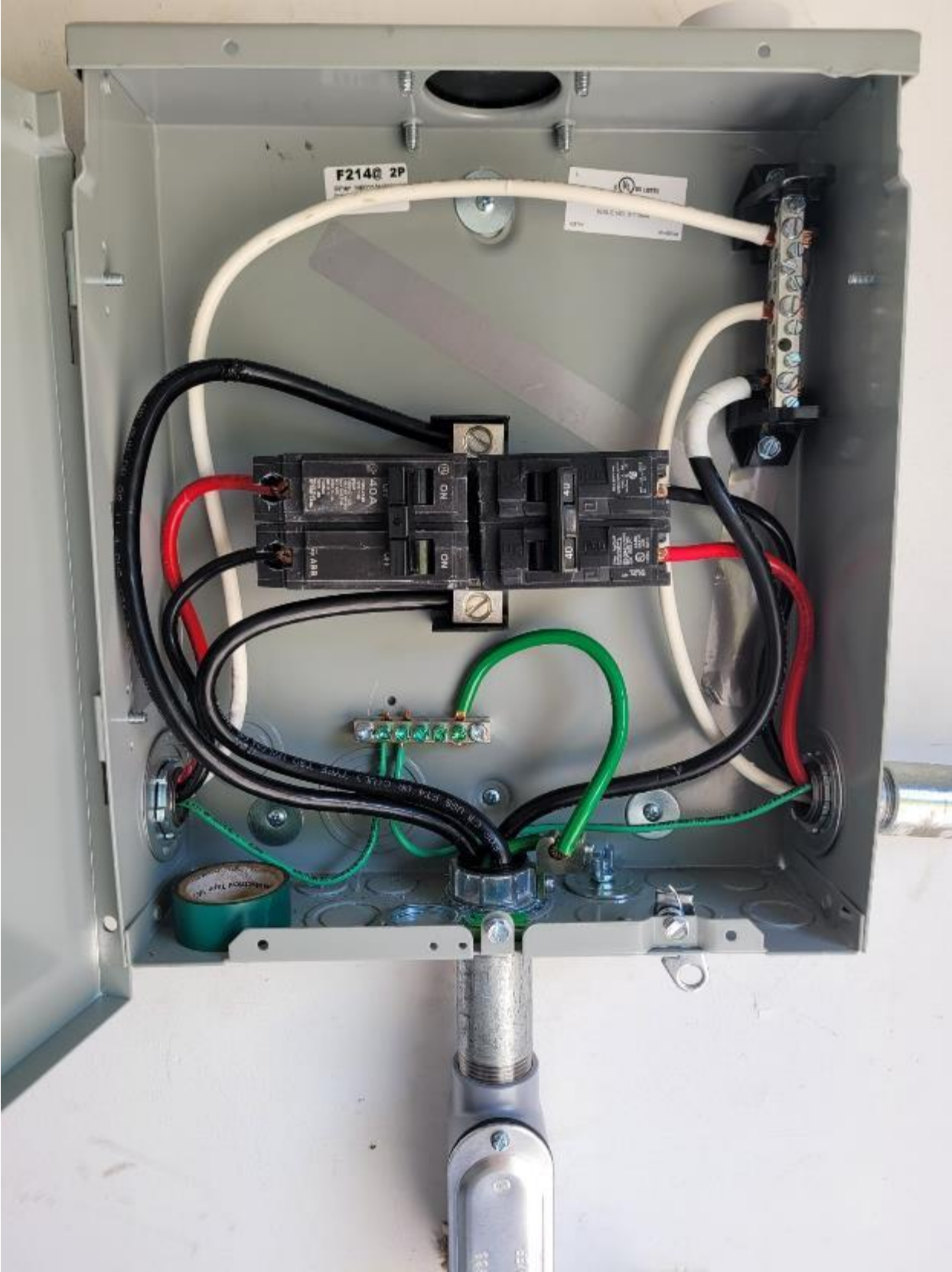
**WARNING**  
DUAL POWER SUPPLY  
SOURCES: UTILITY GRID AND  
PV SOLAR ELECTRIC SYSTEM

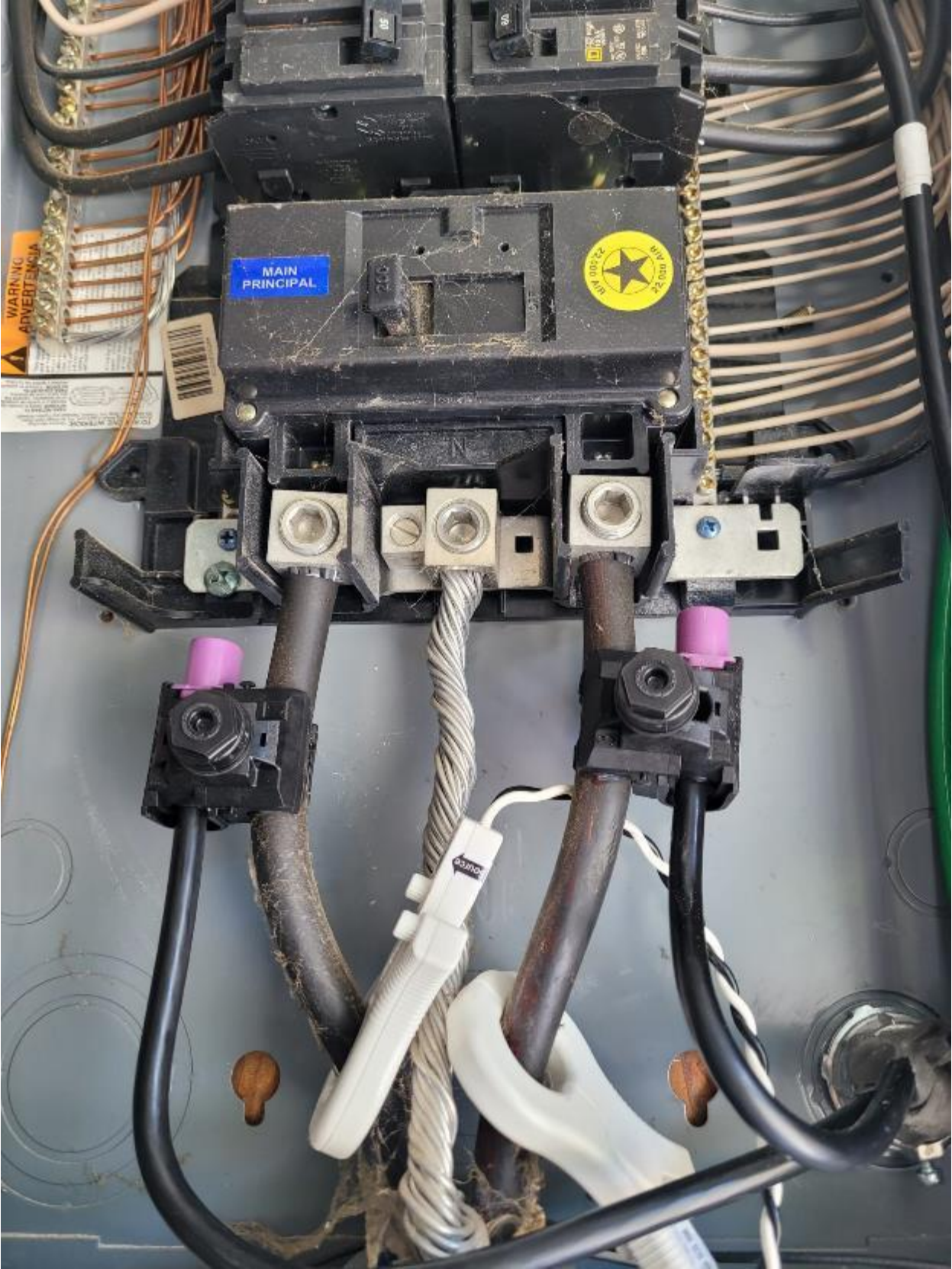
MAXIMUM VOLTAGE  
MAXIMUM CIRCUIT CURRENT  
MAX. SAFETY JUNCTION CURRENT  
OF THE CHARGE CONTROLLER OR  
DC-TO-DC CONVERTER (IF INSTALLED)

solar edge wave

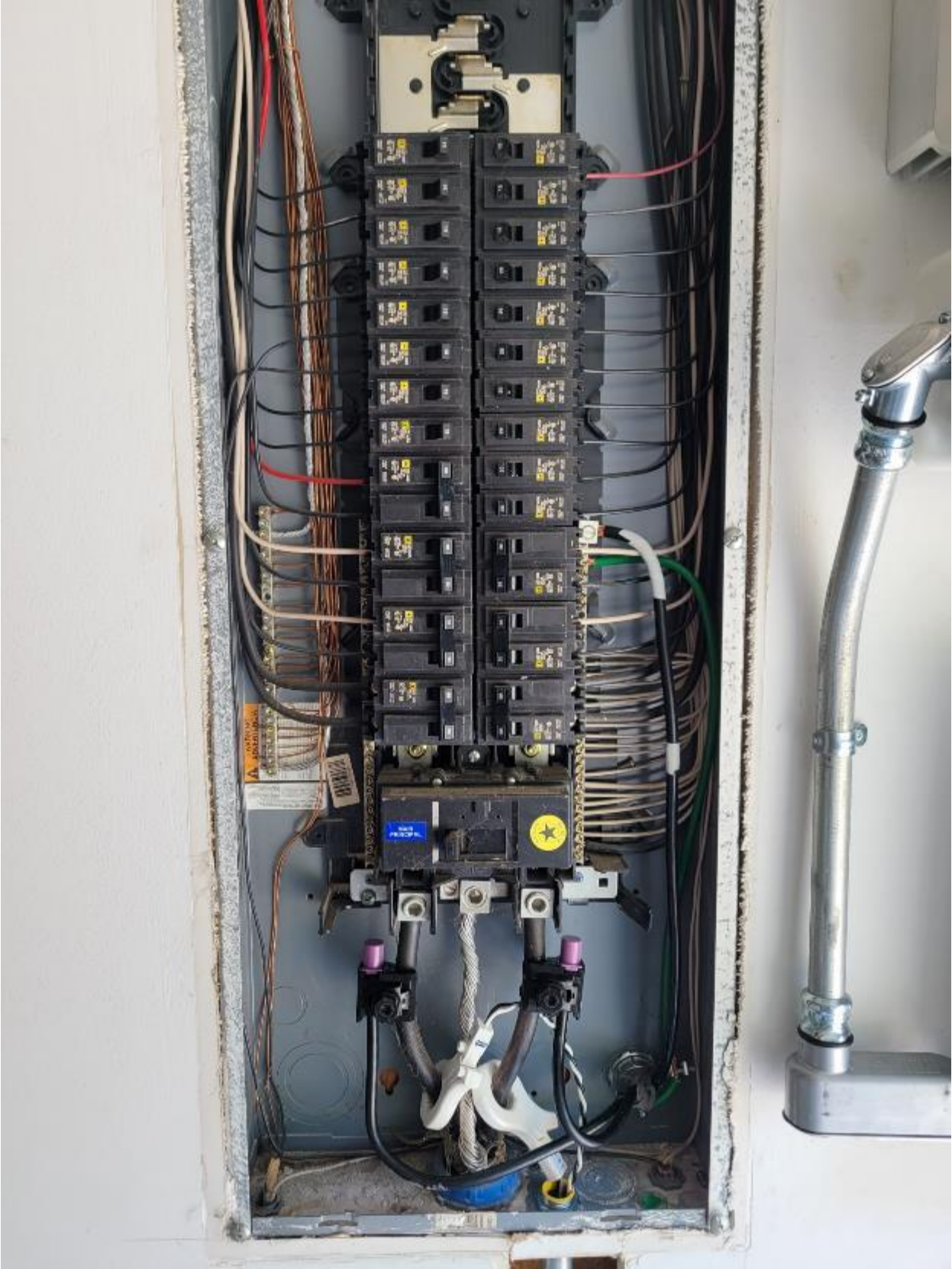
PHOTOVOLTAIC  
DC DISCONNECT

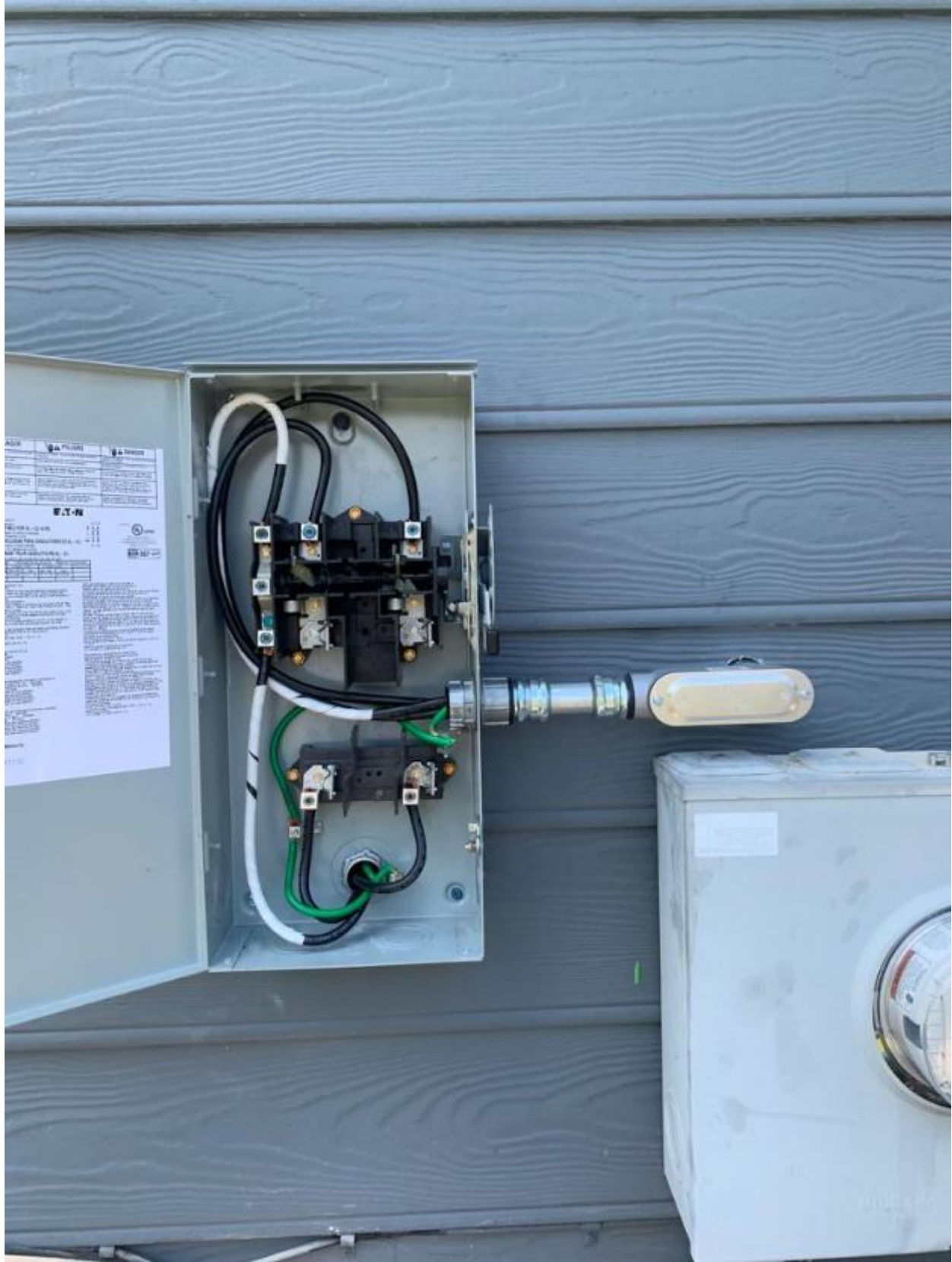
OFF













**⚠ WARNING**  
ELECTRIC SHOCK HAZARD  
TERMINALS ON THE LINE AND  
LOAD SIDES MAY BE ENERGIZED  
IN THE OPEN POSITION

**SOLAR PV SYSTEM EQUIPPED  
WITH RAPID SHUTDOWN**

TURN RAPID SHUTDOWN  
SWITCH TO THE  
"OFF" POSITION TO  
SHUT DOWN PV SYSTEM  
AND REDUCE  
SHOCK HAZARD  
IN THE ARRAY



**WARNING**  
DO NOT TOUCH THE TERMINALS OR WIRING INSIDE THIS ENCLOSURE. THE TERMINALS AND WIRING ARE ENERGIZED AND MAY BE HOT TO TOUCH. CONTACT WITH ENERGIZED TERMINALS OR WIRING CAN CAUSE SEVERE BURNS OR DEATH.





"LEADER" INVERTER

**⚠ WARNING**

**BIPOLAR PHOTOVOLTAIC ARRAY**

DISCONNECTION OF NEUTRAL  
GROUNDED CONDUCTORS MAY  
RESULT IN OVERVOLTAGE ON  
ARRAY OR INVERTER

**⚠ WARNING**

**DUAL POWER SUPPLY**

SOURCES: UTILITY GRID AND  
PV SOLAR ELECTRIC SYSTEM

**solar**edge

**HD** wave

MAXIMUM VOLTAGE	240V
MAXIMUM CIRCUIT CURRENT	12A
MAX. RATED OUTPUT CURRENT OF THE CHARGE CONTROLLER OR DC-TO-DC CONVERTER (IF INSTALLED)	N/A

PHOTOVOLTAIC

DC DISCONNECT

ON

OFF

solar**edge**



THIS IS AN ACCUMULATOR PANEL

DO NOT INSTALL ADDITIONAL LOADS WITHOUT AN ENGINEER'S LETTER

"FOLLOWER" INVERTER

"LEADER" INVERTER

