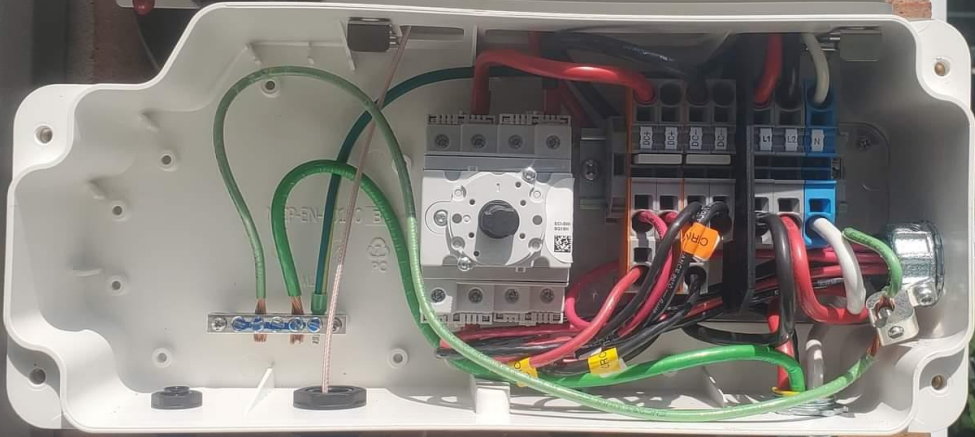


⚠ WARNING
ELECTRICAL SHOCK HAZARD
THE DC CONDUCTORS OF THIS
PHOTOVOLTAIC SYSTEM ARE UNGROUNDED
AND MAY BE ENERGIZED
596-03942

MAXIMUM VOLTAGE **500 V**
MAXIMUM CIRCUIT CURRENT **30 A**
MAX RATED OUTPUT CURRENT OF
THE CHARGE CONTROLLER
OR DC-TO-DC CONVERTER
(IF INSTALLED) _____
596-03942

solar**edge**

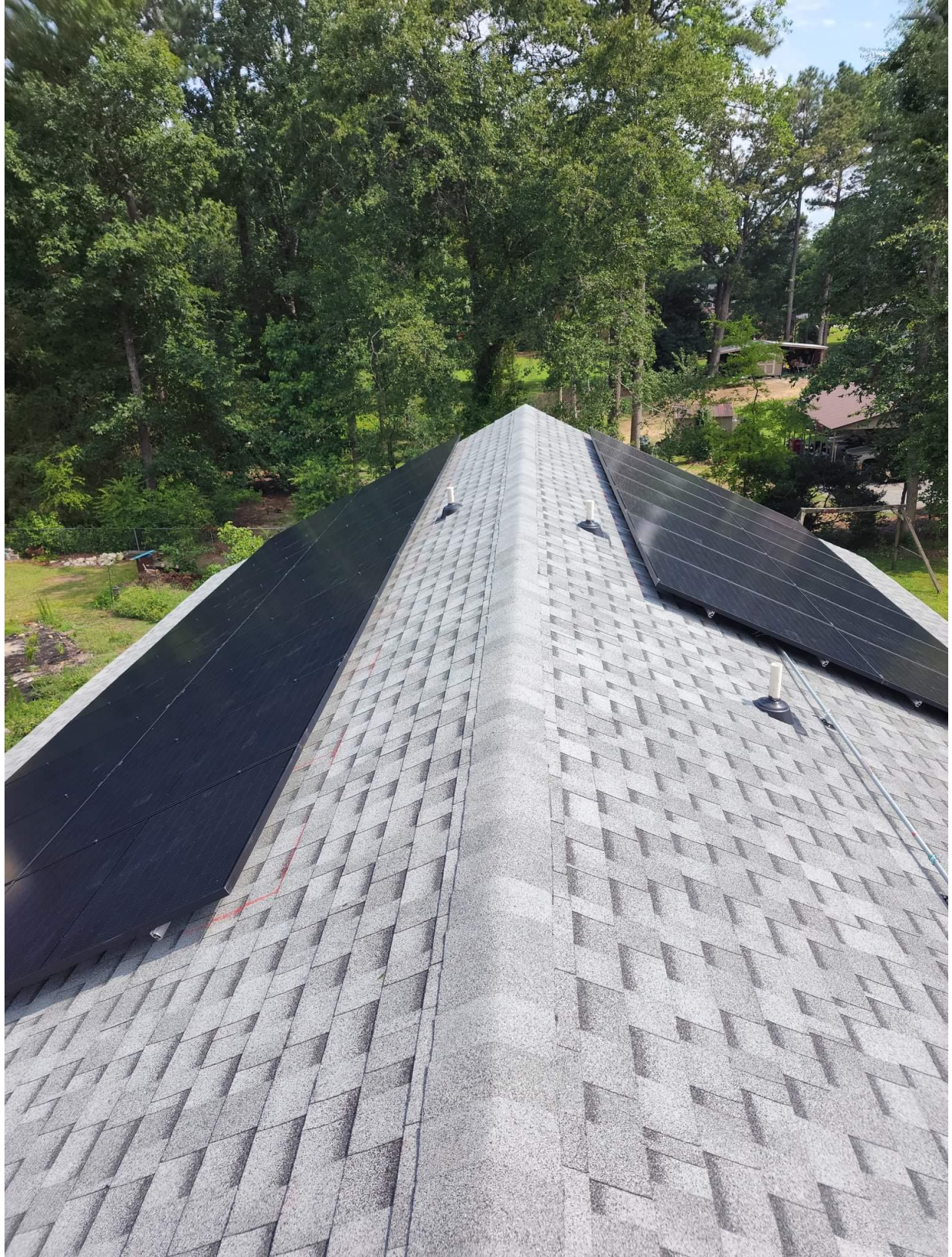
HD wave

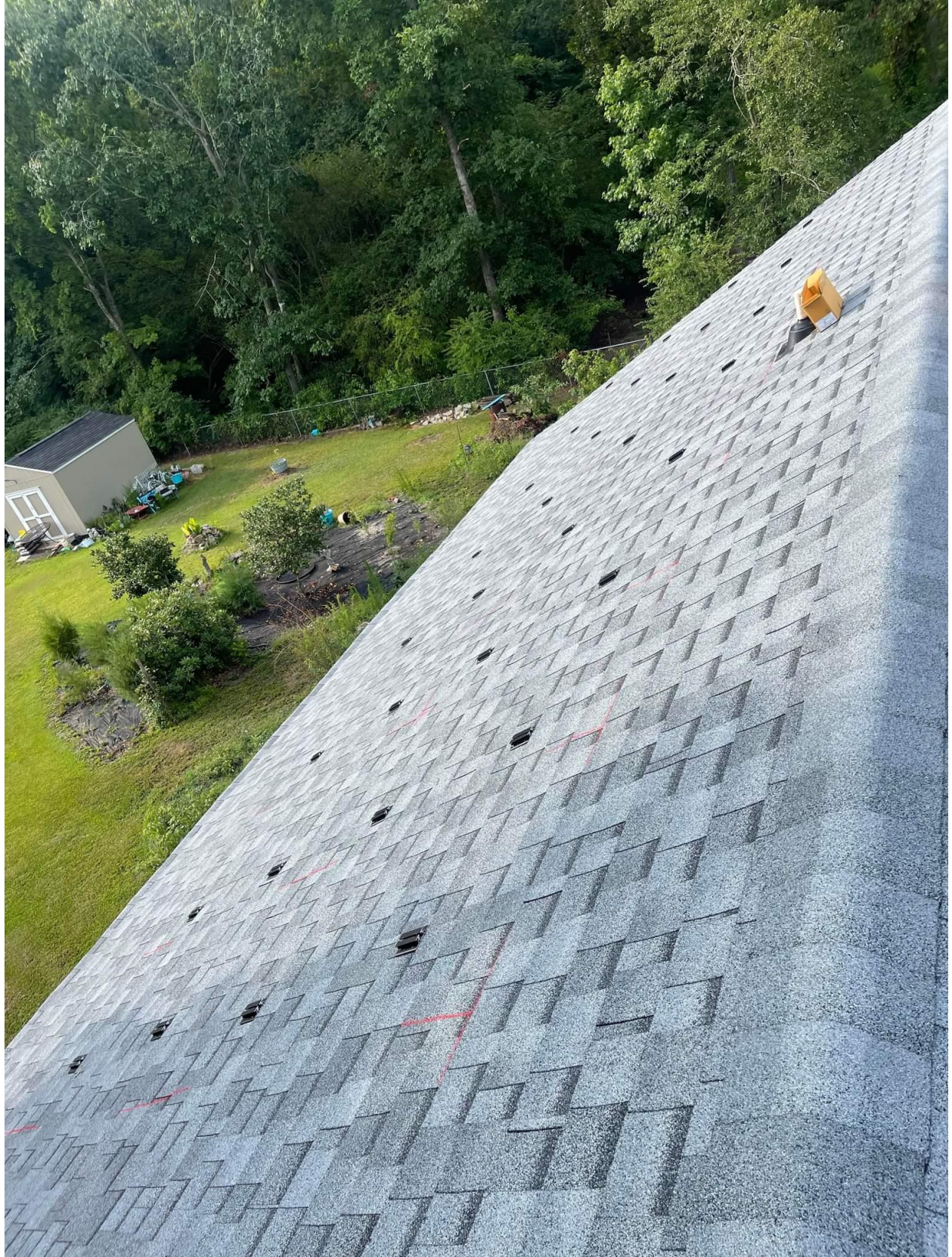


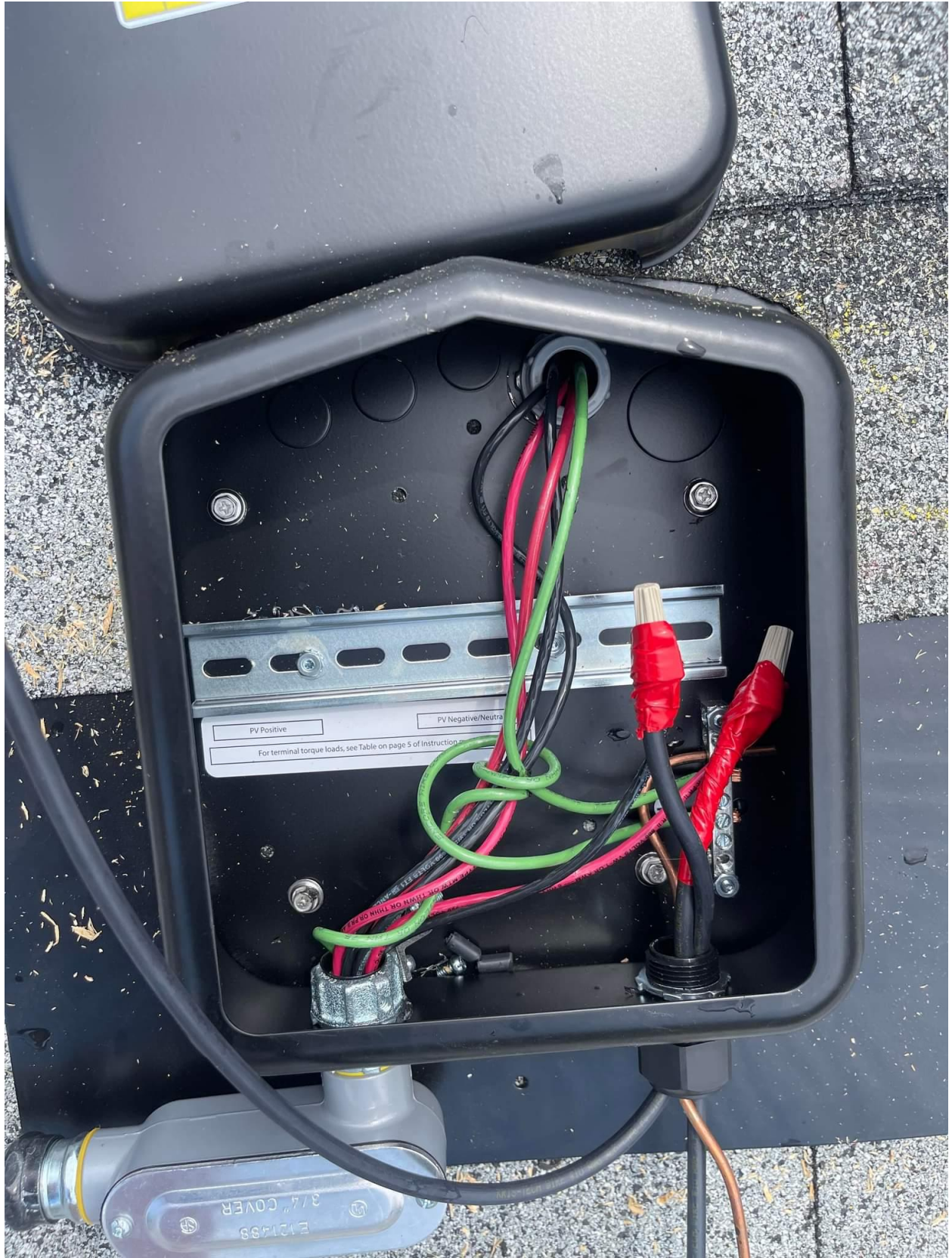












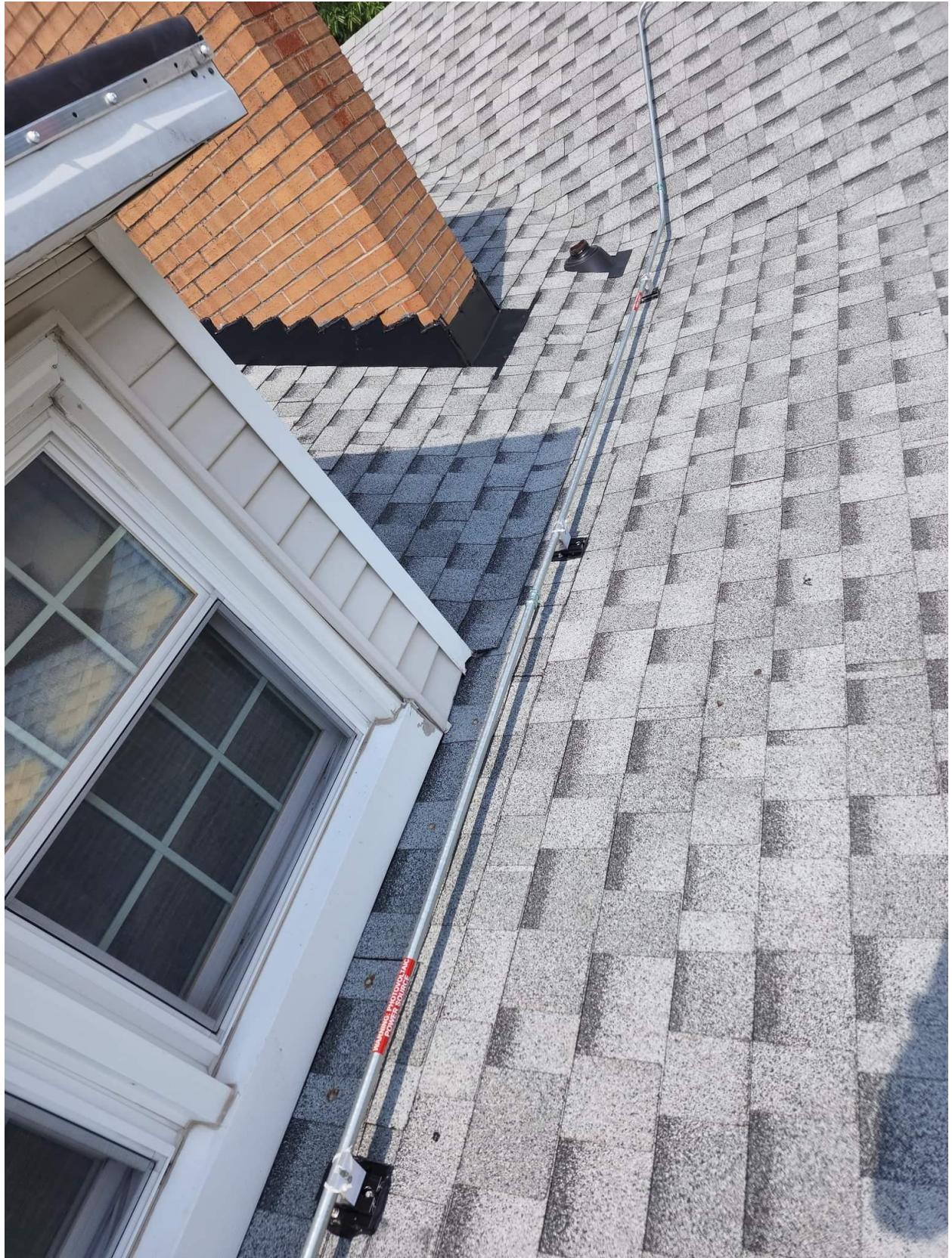


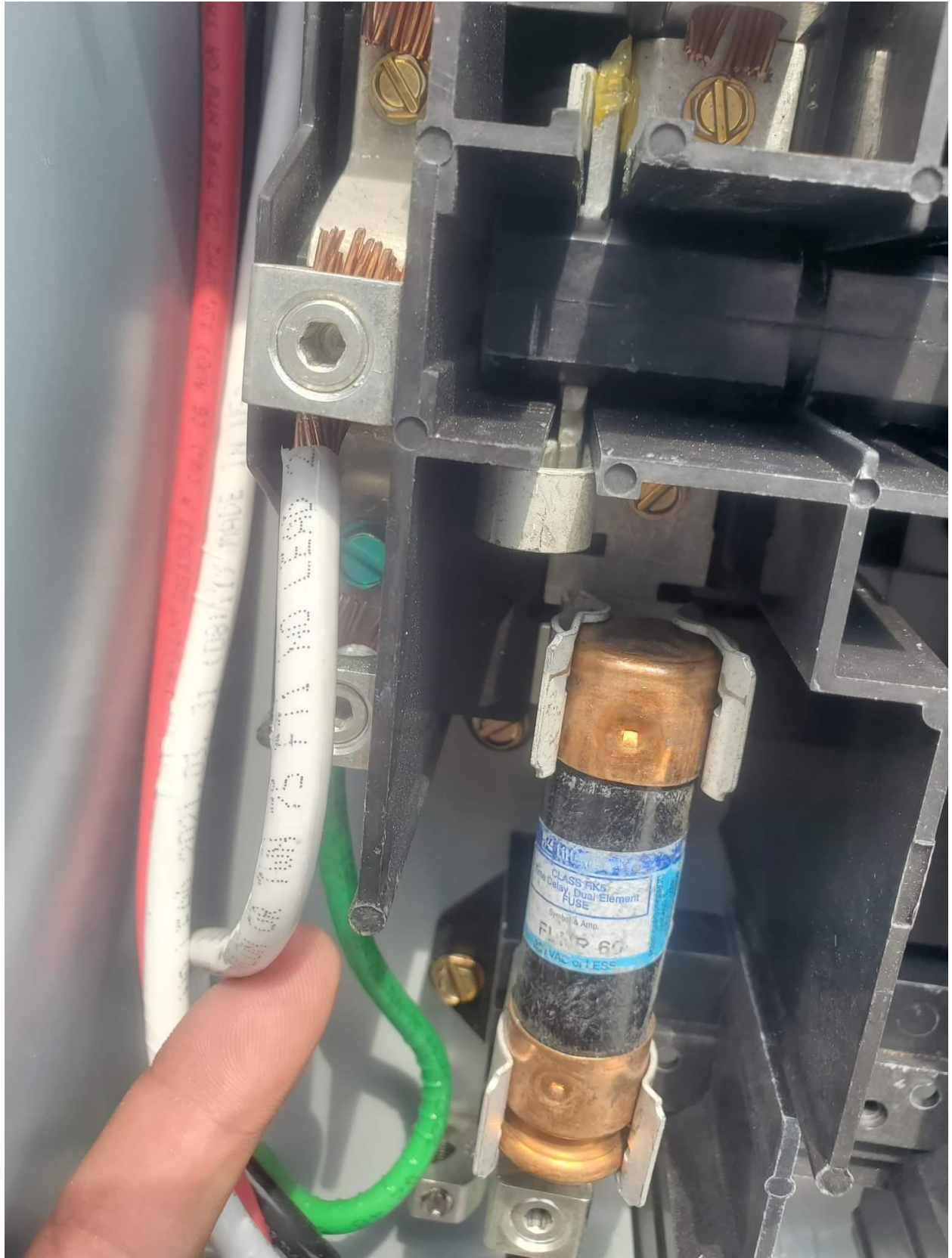














EATON

SERVICE
DISCONNECT

General Duty Safety Switch
Interrupteur de sécurité à usage général
Interruptor de seguridad de servicio general
60 A, 240 V~, 60 Hz
Complete ratings inside
Valeurs nominales complètes à l'intérieur
Información completa de capacidades en el interior
Further instructions inside
Autres instructions à l'intérieur
Instrucciones adicionales en el interior
Made in U.S.A. / Fabriqué aux É.-U. / Hecho en E.U.A.

⚠ DANGER
HAZARDOUS VOLTAGE WILL CAUSE
SEVERE INJURY OR DEATH.
• Never operate inside with cover open.
• Turn OFF power at switch before doing any work
inside. Lockout or tagout. Cover cover before working.
Evitez l'arc.
**TENSION DANGEREUSE. PEUT CAUSER
DES BLESSURES GRAVES OU LA MORT.**
• Ne pas travailler à l'intérieur lorsque la couverture
est ouverte.
• Couper l'alimentation au point de l'interrupteur avant
toute intervention, verrouillage ou étiquetage. Fermer la
couverture avant de travailler sous tension.

⚠ PELIGRO
VOLTAGE PELIGROSO PUEDE CAUSAR
HERIDAS SEVERAS O LA MUERTE.
• Nunca opere el interruptor con la cubierta abierta.
• Desconecte el suministro del interruptor antes de
cualquier trabajo del equipo. Bloquee o etiquete las partes.
Cierre la cubierta antes de trabajar con el interruptor.

MAIN PHOTOVOLTAIC SYSTEM AC DISCONNECT

596-03942

PHOTOVOLTAIC
48.5 A 240 V
AC DISCONNECT

RAPID SHUTDOWN SWITCH FOR SOLAR PV SYSTEM

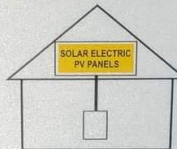


596-03942

SECTIONNEUR
PRINCIPALE
SERVICIO DE
DESCONEXION

SOLAR PV SYSTEM EQUIPPED WITH RAPID SHUTDOWN

TURN RAPID SHUTDOWN
SWITCH TO THE
"OFF" POSITION TO
SHUT DOWN PV SYSTEM
AND REDUCE
SHOCK HAZARD
IN THE ARRAY



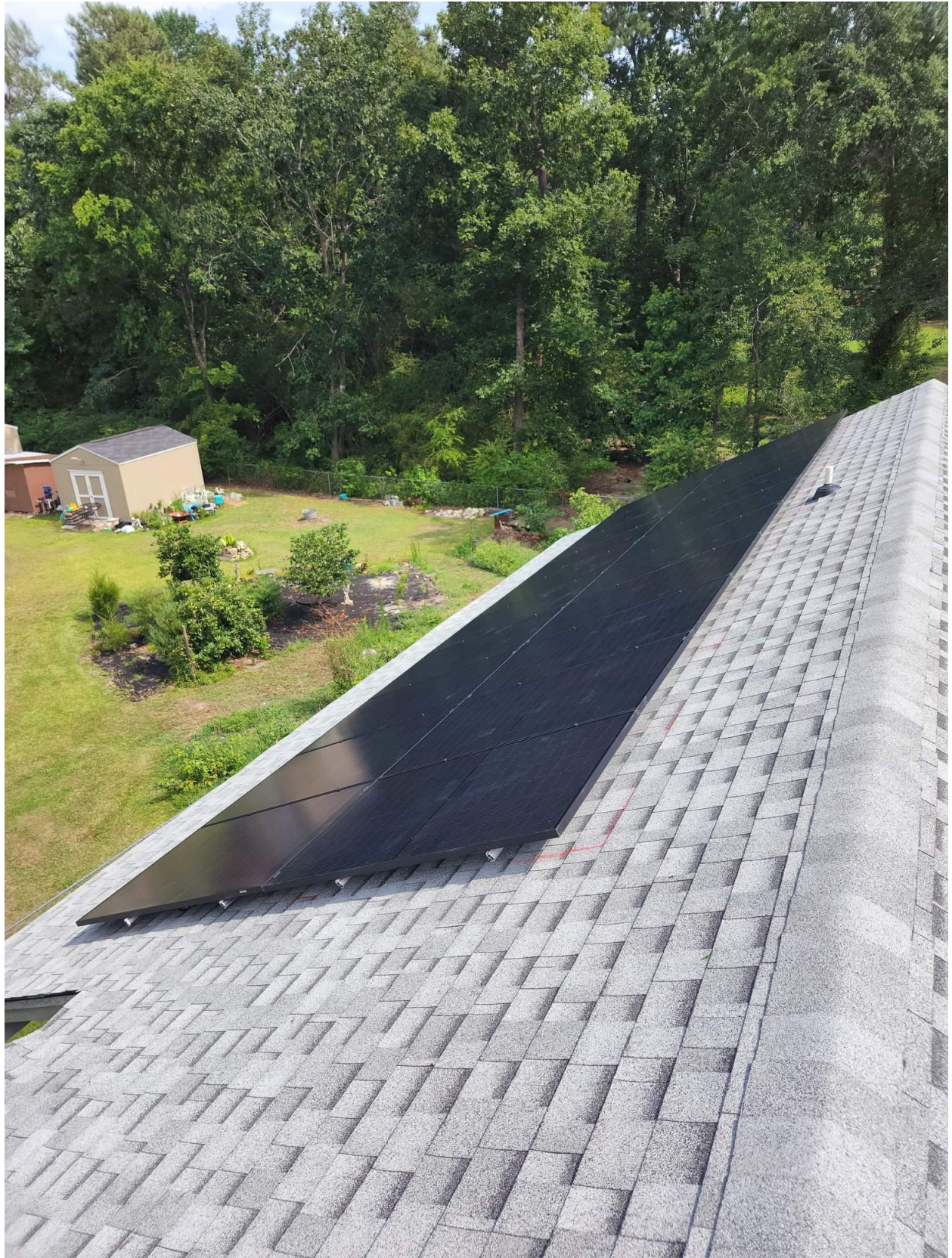
596-03942

ON

OFF

E121/88
3/4" COVER

E121/88
3/4" COVER





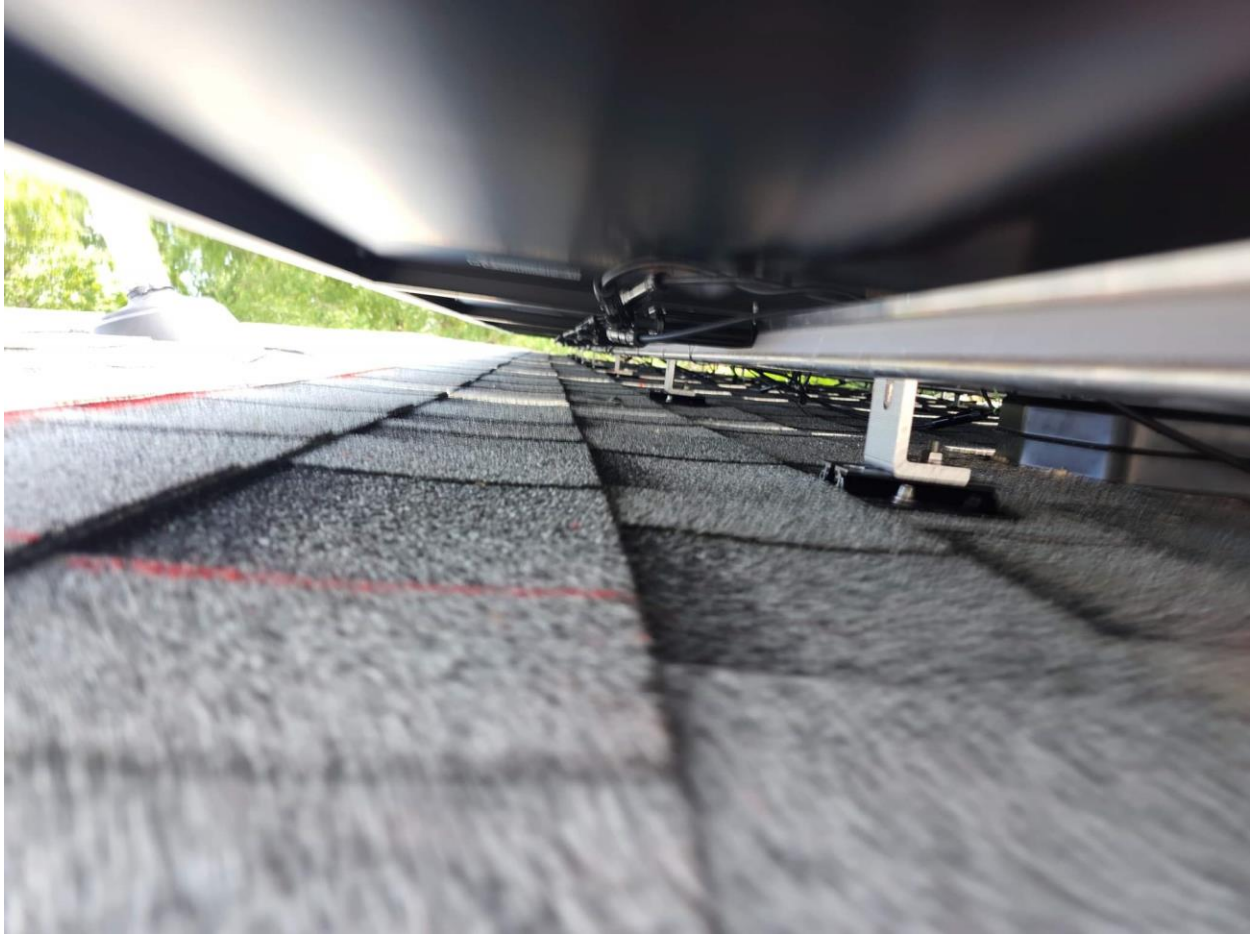




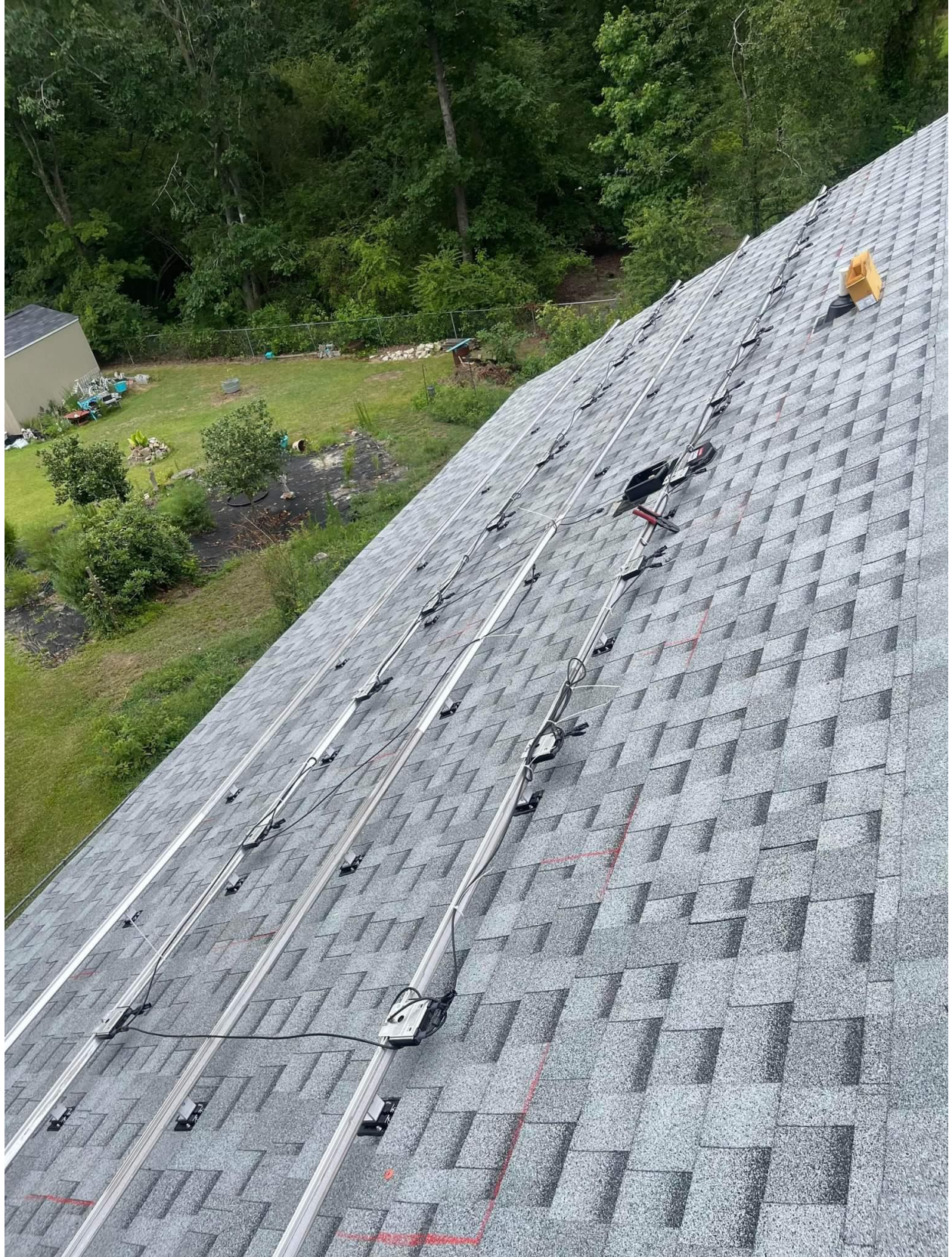










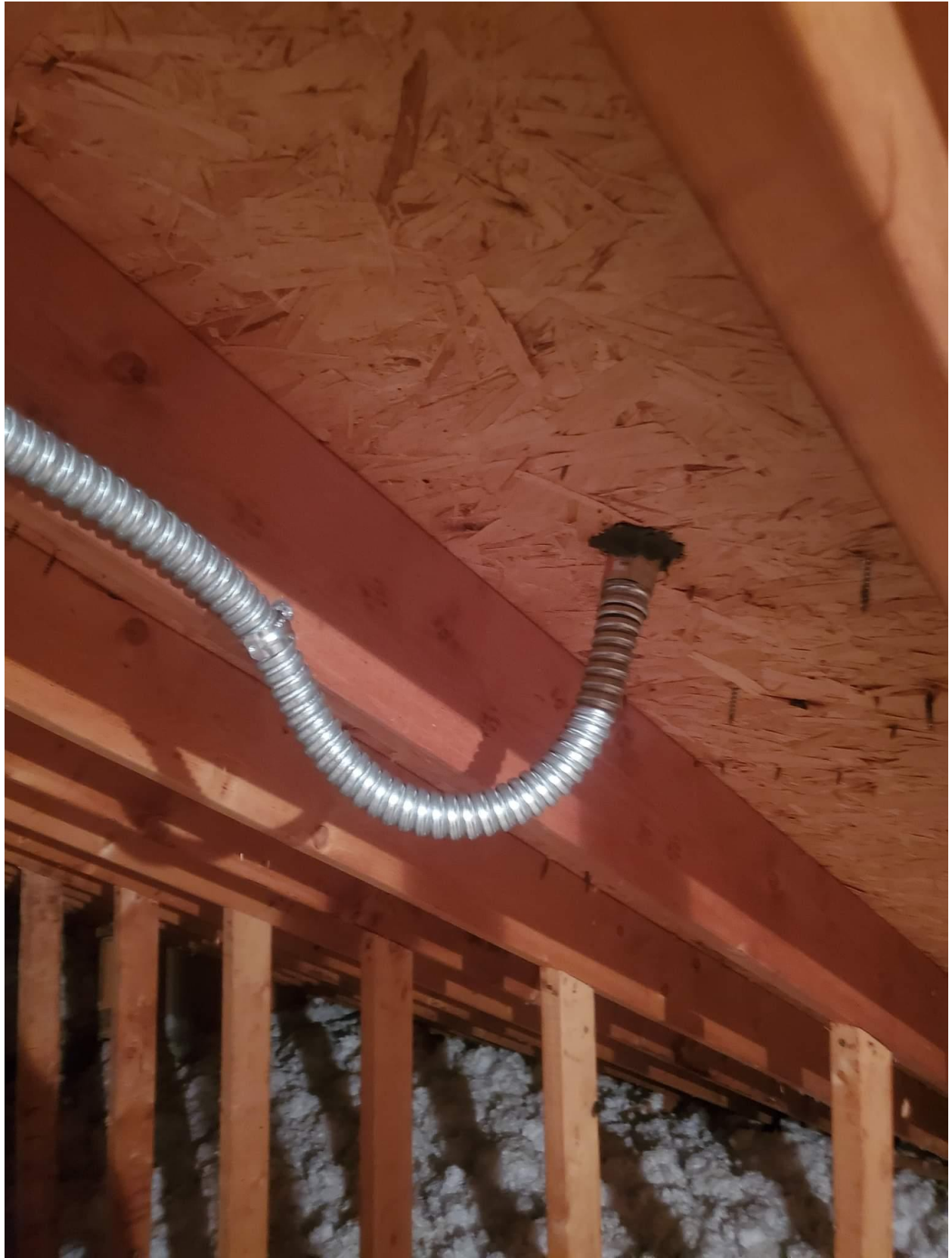




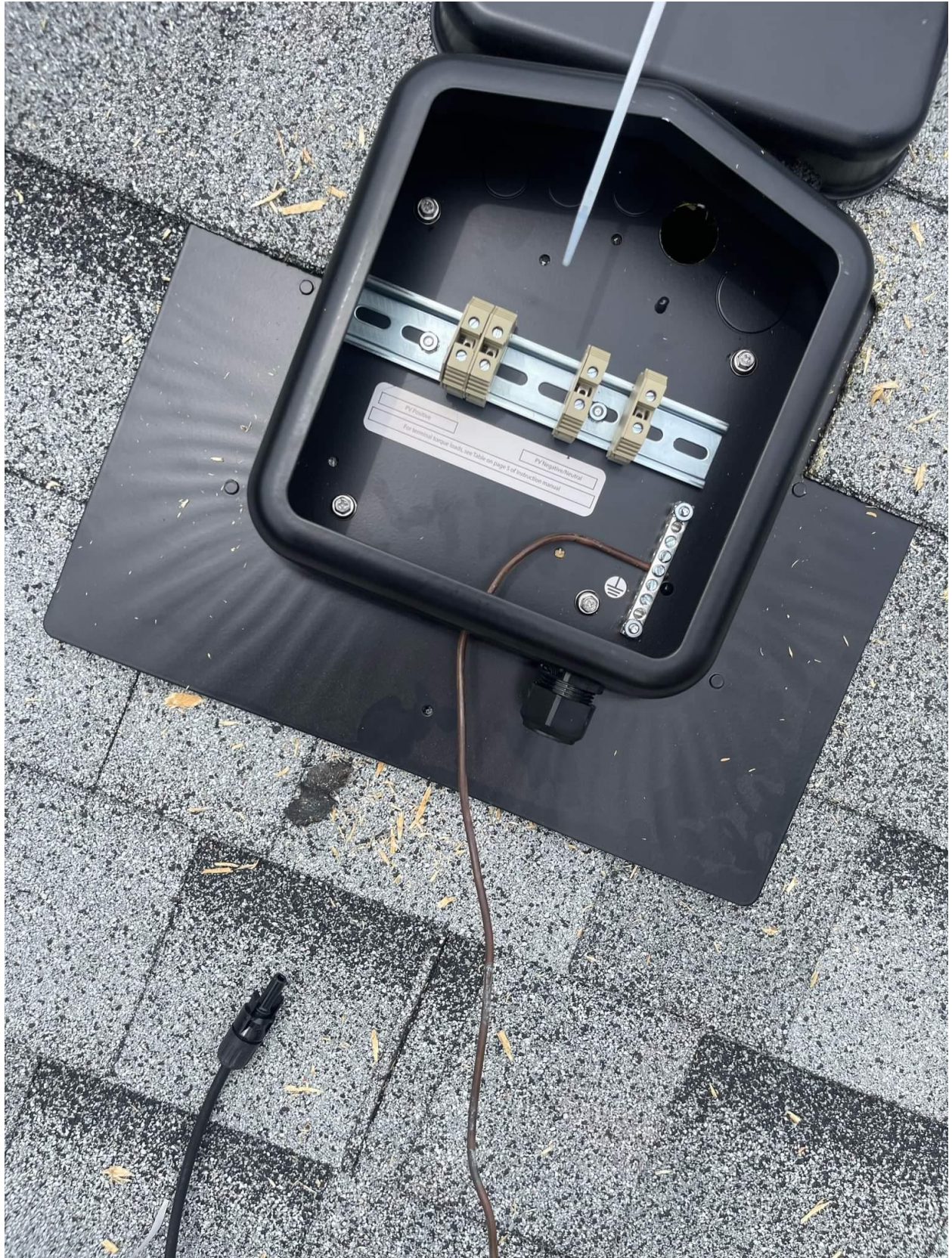
MODEL AS4032-1
P/N: AS4032-AN1-1
S/N: SJ1522-1572F9D05-28 REV:F7

WiFi/ZB Antenna
AS4032-1 L=133cm
PN: AS4032-AN1-1
SN: SJ1522-1572F9D05-28









solaredge



Wireless Gateway + Antenna, NA

PN: SE-WFGW-B-S1-NA



SN: SJ1422-06722DEDC-43



Made in China

DC JUNCTION BOX

596-03942

LLOYD HEDGEPEETH 15.695
132 BURKOT RD LILLINGTON NC



Photovoltaic Combiner/Enclosure Conforms to UL 1741; Certified to CSA C22.2 No. 290; Nema Type 3R

Q1 Q2 Q3 Q4 21 22 23 24
0799 Series 0766-41AD

Max Ratings: 600 VDC/115 AMPS; 240 VAC/60 AMPS; Short circuit 10KA, Ambient Temp 75°C

⚠ WARNING DANGER OF ELECTRIC SHOCK. ONLY TRAINED PERSONNEL SHOULD SERVICE THIS EQUIPMENT. ALWAYS DISCONNECT ALL POWER BEFORE WORKING ON THIS EQUIPMENT. USE APPROPRIATE SAFETY PROCEDURES. ALWAYS WEAR APPROPRIATE PPE. ALWAYS USE PROPER LOCKOUT/TAGOUT PROCEDURES. ALWAYS FOLLOW THE NATIONAL ELECTRICAL CODE (NEC) REQUIREMENTS FOR THIS EQUIPMENT. CAUTION: BEFORE SERVICING THIS EQUIPMENT, DISCONNECT ALL POWER TO THE EQUIPMENT. ALWAYS WEAR APPROPRIATE PPE. ALWAYS USE PROPER LOCKOUT/TAGOUT PROCEDURES. ALWAYS FOLLOW THE NATIONAL ELECTRICAL CODE (NEC) REQUIREMENTS FOR THIS EQUIPMENT.	⚠ AVERTISSEMENT DANGER DE CHOC ÉLECTRIQUE. SEULES DES PERSONNELS FORMÉS DEVRAIENT RÉPARER CE MATÉRIEL. TOUJOURS DÉCONNECTER TOUS LES COURANTS AVANT DE TRAVAILLER SUR CE MATÉRIEL. UTILISER LES PROCÉDURES DE SÉCURITÉ APPROPRIÉES. TOUJOURS PORTER LES ÉQUIPEMENTS DE PROTECTION INDIVIDUELLE APPROPRIÉS. TOUJOURS UTILISER LES PROCÉDURES DE VERROUILLAGE/ÉTIQUETAGE APPROPRIÉES. TOUJOURS SUIVRE LES EXIGENCES DU CODE NATIONAL DE LA PROTECTION ÉLECTRIQUE (NEC) POUR CE MATÉRIEL. ATTENTION: AVANT D'ENTREPRENDRE LES RÉPARATIONS, DÉCONNECTER TOUS LES COURANTS DE CE MATÉRIEL. TOUJOURS PORTER LES ÉQUIPEMENTS DE PROTECTION INDIVIDUELLE APPROPRIÉS. TOUJOURS UTILISER LES PROCÉDURES DE VERROUILLAGE/ÉTIQUETAGE APPROPRIÉES. TOUJOURS SUIVRE LES EXIGENCES DU CODE NATIONAL DE LA PROTECTION ÉLECTRIQUE (NEC) POUR CE MATÉRIEL.
--	---

RSTC Enterprises
Patent No. US 7626118 B1







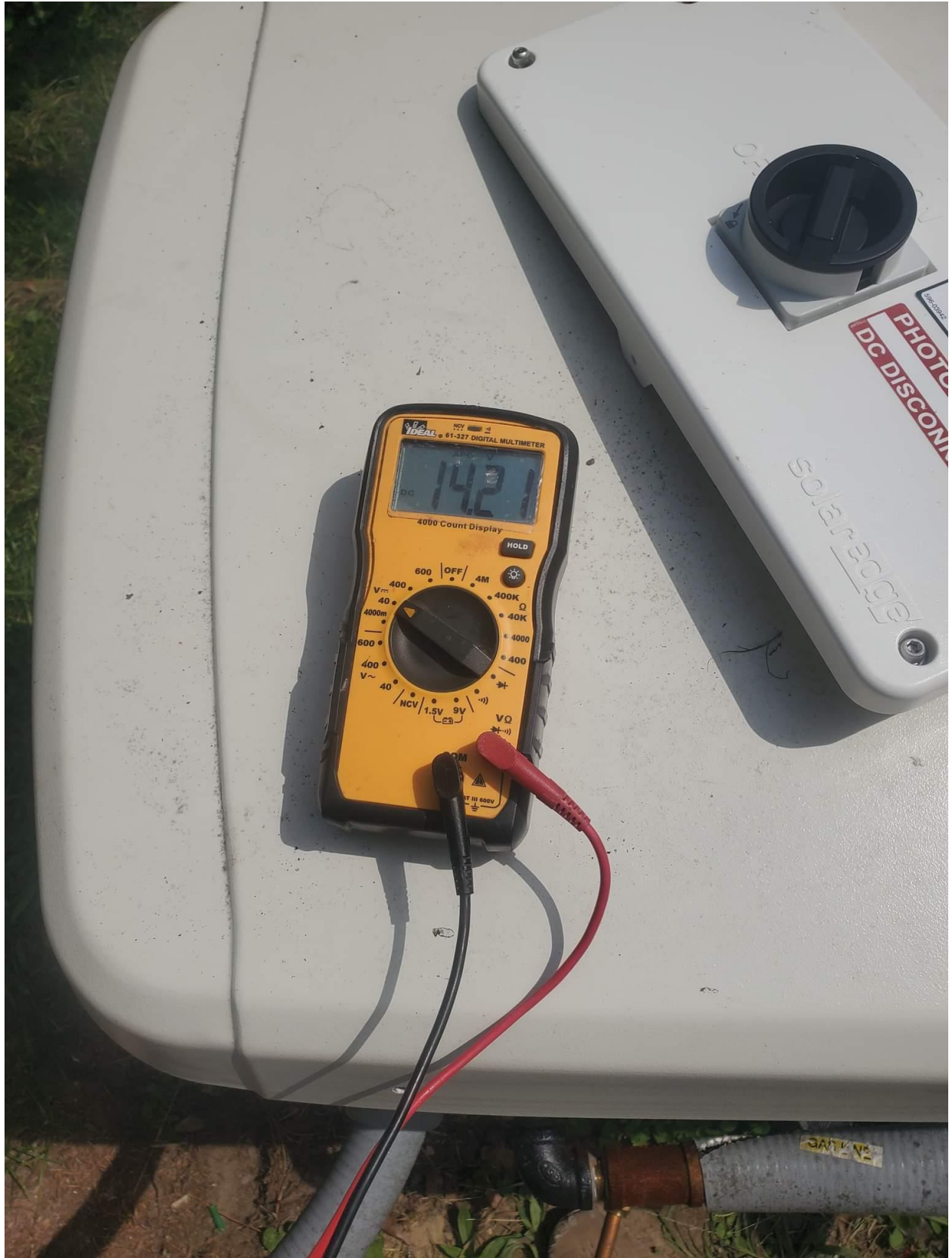






















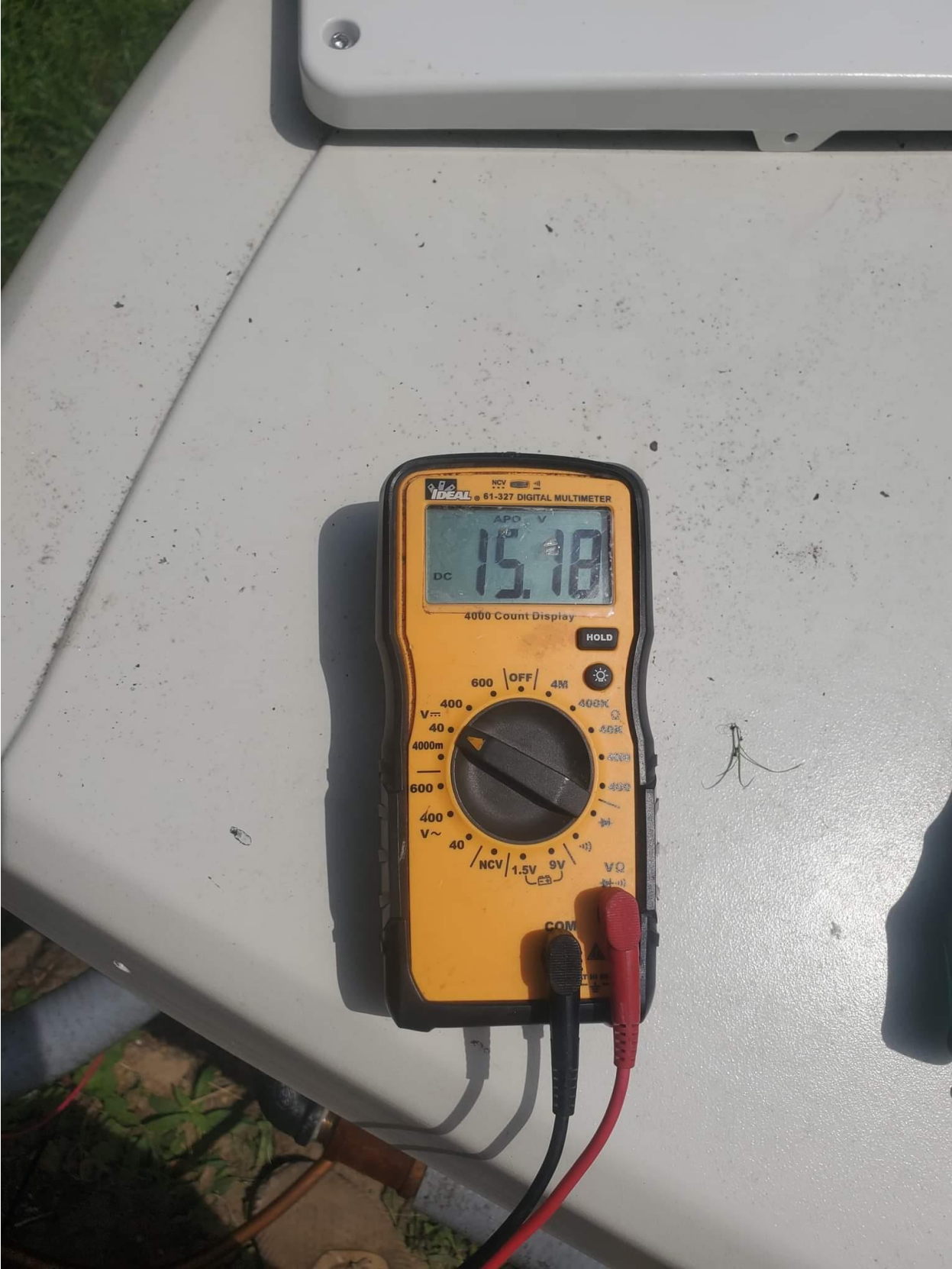














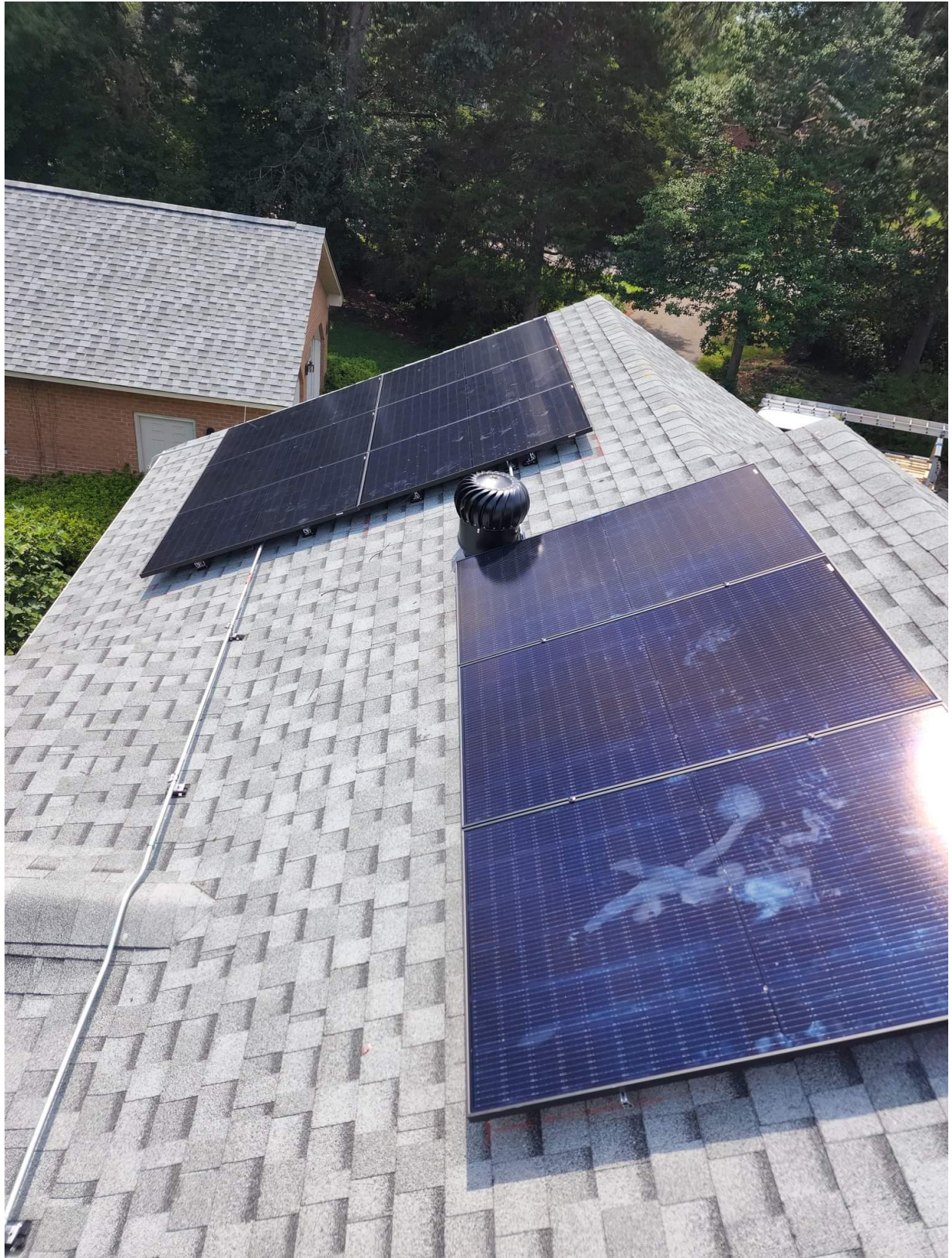
















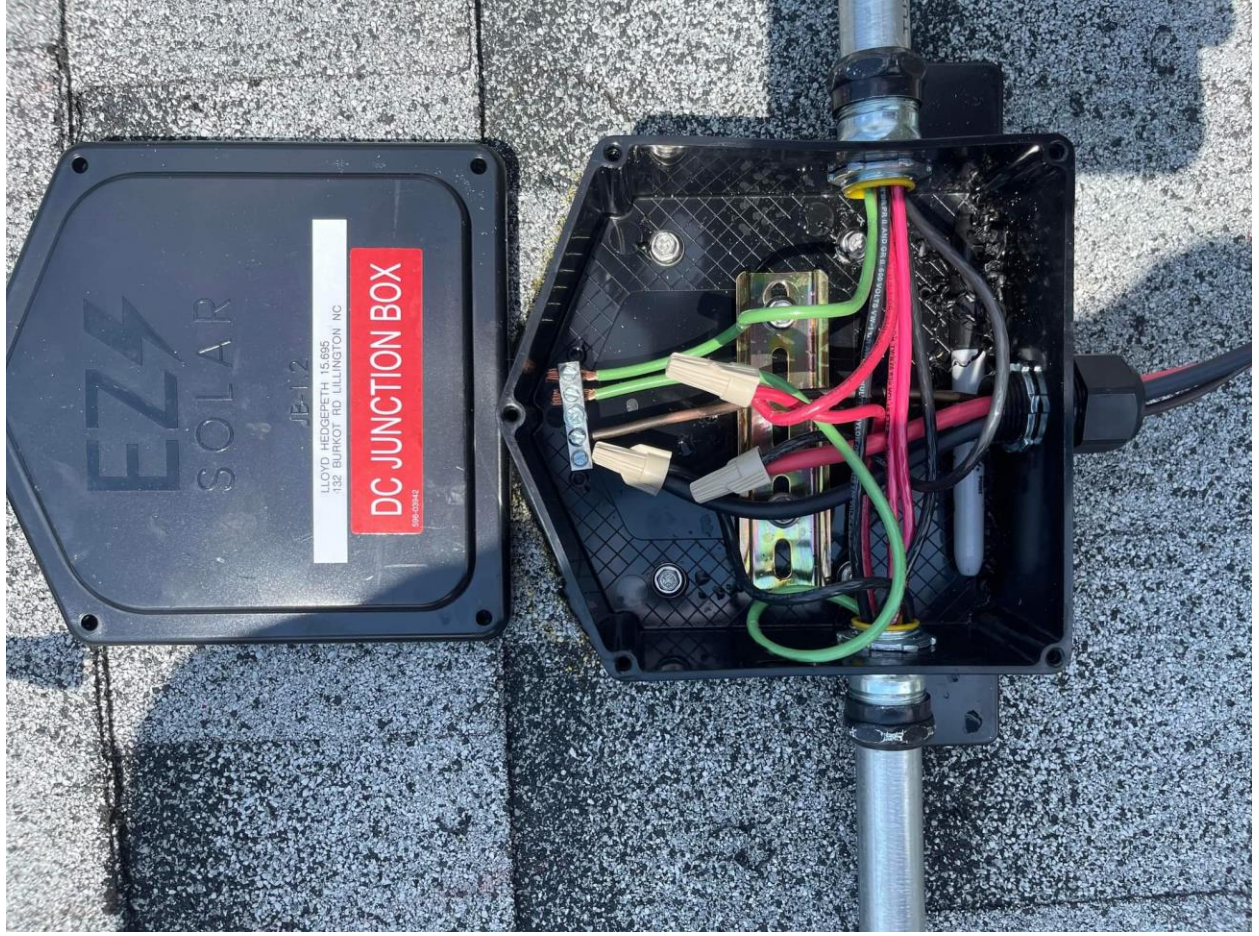
MIXED











JE-12
LLOYD HENGERETH, 15,695,
132 BURKOT RD LILLINGTON, NC

DC JUNCTION BOX
100-220412



WARNING
ELECTRICAL EQUIPMENT
DANGER OF ELECTRIC SHOCK
DO NOT OPEN

GENERAC

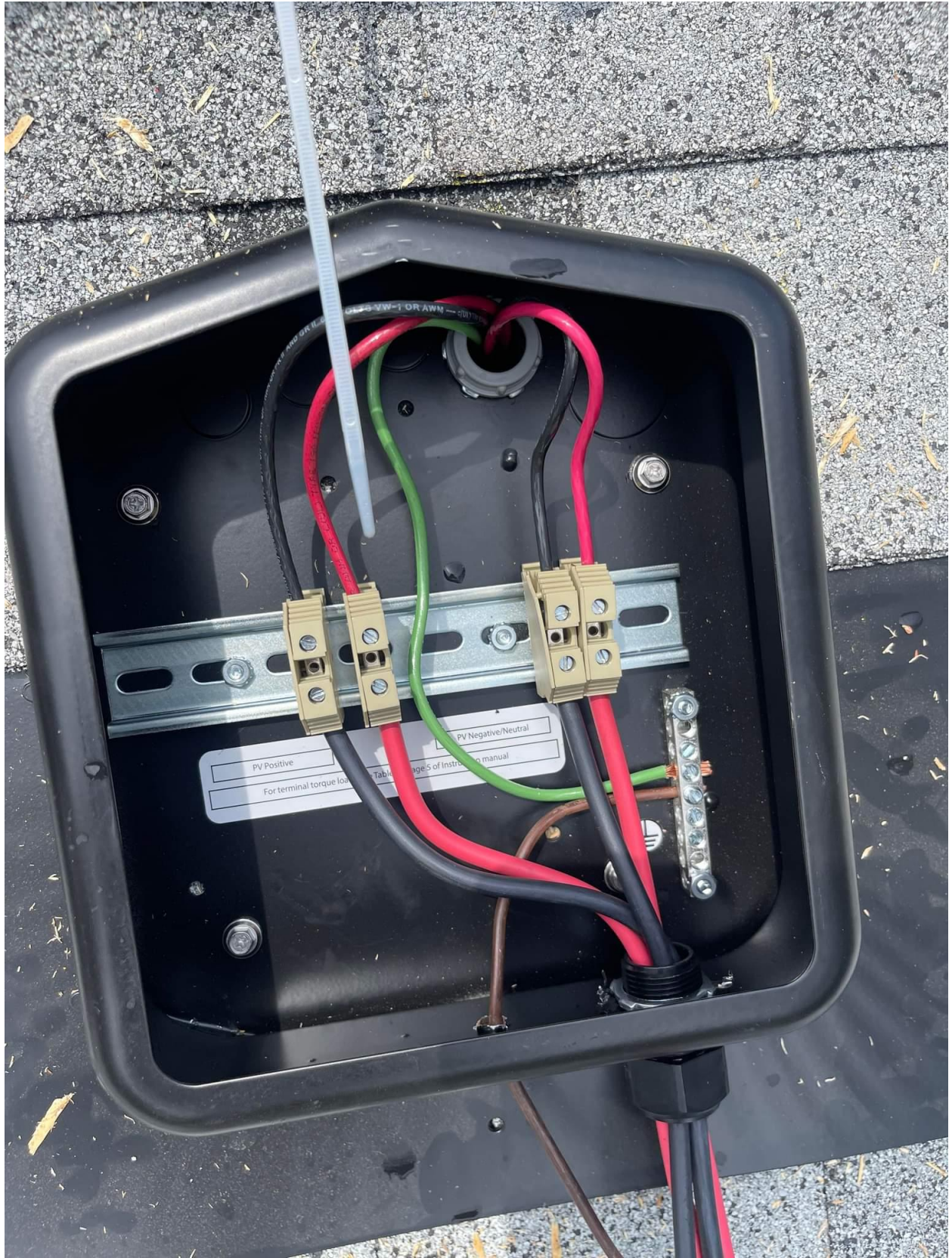
GENERAC
WARNING
ELECTRICAL EQUIPMENT
DANGER OF ELECTRIC SHOCK
DO NOT OPEN

WARNING
ELECTRICAL EQUIPMENT
DANGER OF ELECTRIC SHOCK
DO NOT OPEN

SOLAR PV SYSTEM EQUIPPED
WITH RAPID SHUTDOWN
WARNING
ELECTRICAL EQUIPMENT
DANGER OF ELECTRIC SHOCK
DO NOT OPEN
solar HD

MAIN PHOTOVOLTAIC
SYSTEM
AC DISCONNECT
E-T-N
WARNING
ELECTRICAL EQUIPMENT
DANGER OF ELECTRIC SHOCK
DO NOT OPEN
RAPID SHUTDOWN SWITCH
FOR SOLAR PV SYSTEMS
SOLAR PV SYSTEM EQUIPPED
WITH RAPID SHUTDOWN
WARNING
ELECTRICAL EQUIPMENT
DANGER OF ELECTRIC SHOCK
DO NOT OPEN

NOTED
1/18/2018

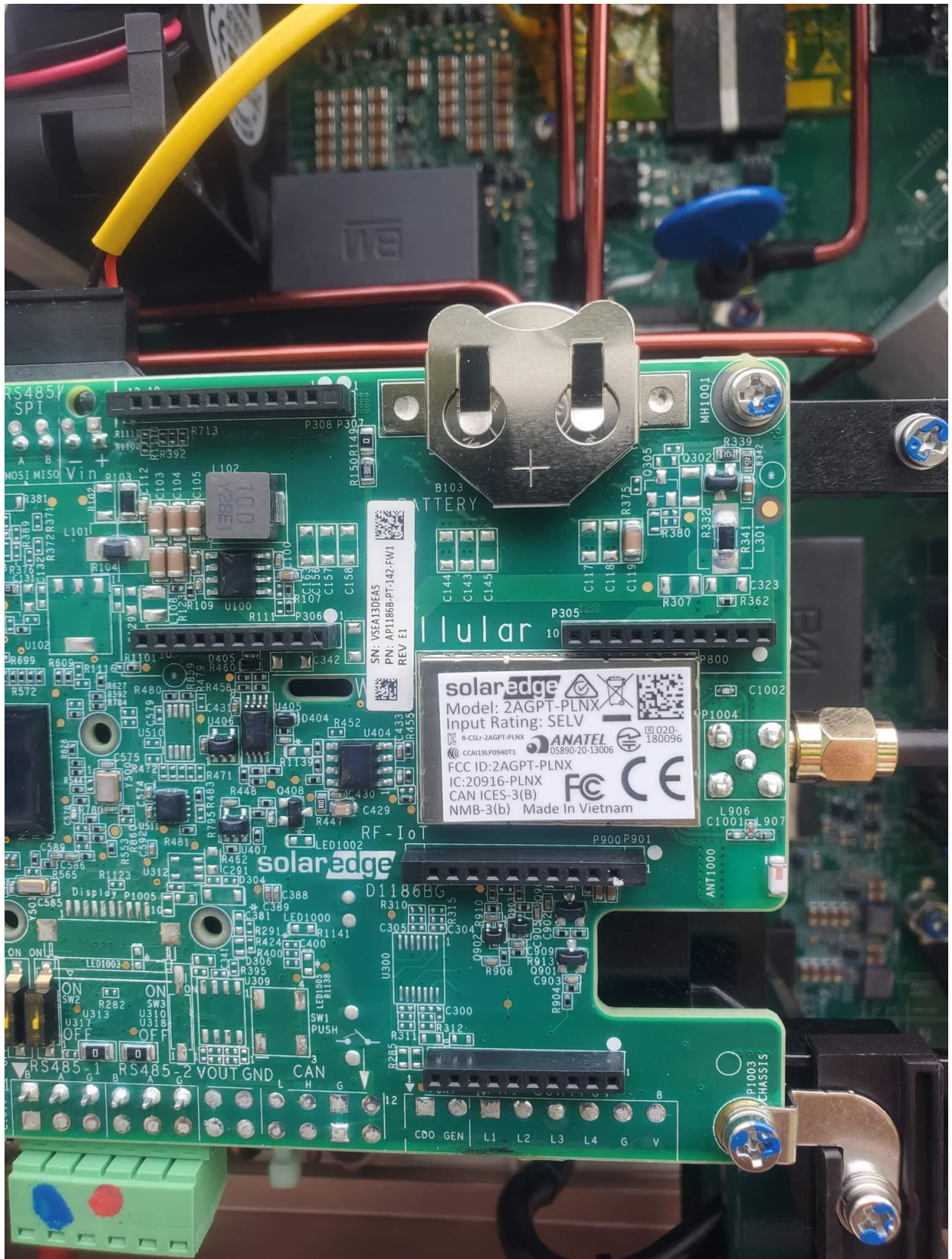


PV Positive

PV Negative/Neutral

For terminal torque load... Table page 5 of Instruction manual





EZ
SOLAR

JB-1.2

LLOYD HEDGEPEETH 15.695
132 BURKOT RD LILLINGTON NC

DC JUNCTION BOX

596-03942









WARNING ELECTRIC SHOCK HAZARD. THE DC CONDUCTORS OF THIS PHOTOVOLTAIC SYSTEM ARE UNGROUNDED AND MAY BE ENERGIZED.

AVERTISSEMENT RISQUE DE CHOC ELECTRIQUE: QUAND LE CHAMP PHOTOVOLTAIQUE EST EXPOSE A LA LUMIERE, UNE TENSION CC EST FOURNIE A CET EQUIPEMENT. SURFACES CHAUDES: NE PAS TOUCHER, AFIN DE REDUIRE LES RISQUES DE BRULURES LE COURANT DE RETOUR INJECTE PAR LE CONVERTISSEUR EN CAS DE DEFAILLANCE DANS LE MODULE PV EST TOUJOURS NUL.

CAUTION HOT SURFACES-TO REDUCE THE RISK OF BURNS-DO NOT TOUCH. PHOTOVOLTAIC ARRAY IS EXPOSED TO LIGHT, IT SUPPLIES A DC VOLTAGE TO EQUIPMENT. COVER PV MODULE WITH OPAQUE MATERIAL BEFORE CONNECTING OR DISCONNECTING THIS OPTIMIZER DURING FAULT, ZERO CURRENT IS SOURCED INTO DC ARRAY BY CONVERTER.

Do Not Remove 15797FF9-06
 SolarEdge Technologies GmbH/
 Werner-Eckert-Strasse 6/81829 Munich/Germany

FC

N →

