



203822315578400613

We aim for a greener tomorrow with completely clean energy solutions

# Q.PEAK DUO BLK ML-G10+ 400

# Qcells

## PERFORMANCE AT STANDARD TEST CONDITIONS\*

Nominal Power* (+5W/-0W)	$P_{max}$	[W]	400
Short circuit current*	$I_{sc}$	[A]	11.14
Open circuit voltage*	$V_{oc}$	[V]	45.30
Current at maximum power	$I_{mp}$	[A]	10.77
Voltage at maximum power	$V_{mp}$	[V]	37.13
Maximum system voltage	$V_{sys}$	[V]	1000(IEC) 1000(U.L.)
Weight	M	[kg / lbs]	22.0 / 48.5

Assembled in USA



### DANGER!

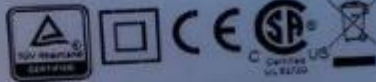
Risk of electric shock!  
DO NOT connect or disconnect plug contacts while system is under load current. Refer to the Installation and Operation Manual before installing, operating or servicing this unit.

### DANGER!

Risque de choc électrique!  
NE PAS connecter ou déconnecter les connecteurs lorsque le système est en charge. Consultez le manuel d'installation et d'utilisation avant installation, utilisation et entretien du produit.

Fire Rating: Class C / Type 2  
Fuse Rating: 20A

\* Measurement tolerances:  $P_{max} \pm 3\%$ ;  $I_{sc}$ ,  $V_{oc} \pm 5\%$  at STC: 1000W/m<sup>2</sup>, 25 ± 2°C, AM 1.5 according to IEC 60904-3. Data given are rated (nominal) values. IEC 61215:2016; IEC 61730:2016.



203822315578400613

U.S. Patent No. 9,893,215  
(Solar cells)

EMAIL: [service@q-cells.com](mailto:service@q-cells.com)

Hanwha Q CELLS USA Inc.,  
300 Nexus Drive, Dalton GA 30721, USA

131 OLD BARN WAY  
FUQUAY VARINA NC



























PHOTOVOLTAÏQUE EST EXPOSÉ À LA LUMIÈRE, UNE TENSION CC EST FOURNIE À CET ÉQUIPEMENT. SURFACES CHAUDES: NE PAS TOUCHER, AFIN DE DÉVITER LES RISQUES DE BRÛLURES LE COURANT DE RETOUR INVERSE À TRAVERS LE CONVERTISSEUR EN CAS DE DÉFAILLANCE DANS LE MODULE PV EST TOUJOURS NUL

SolarEdge | Ind09



100W/3-00V/1CH

8-60V/11.75A

Open Circuit Voltage: 1V

SZ4621-020EARS74-23

P401-5M141RM

NR3R

Th: EU

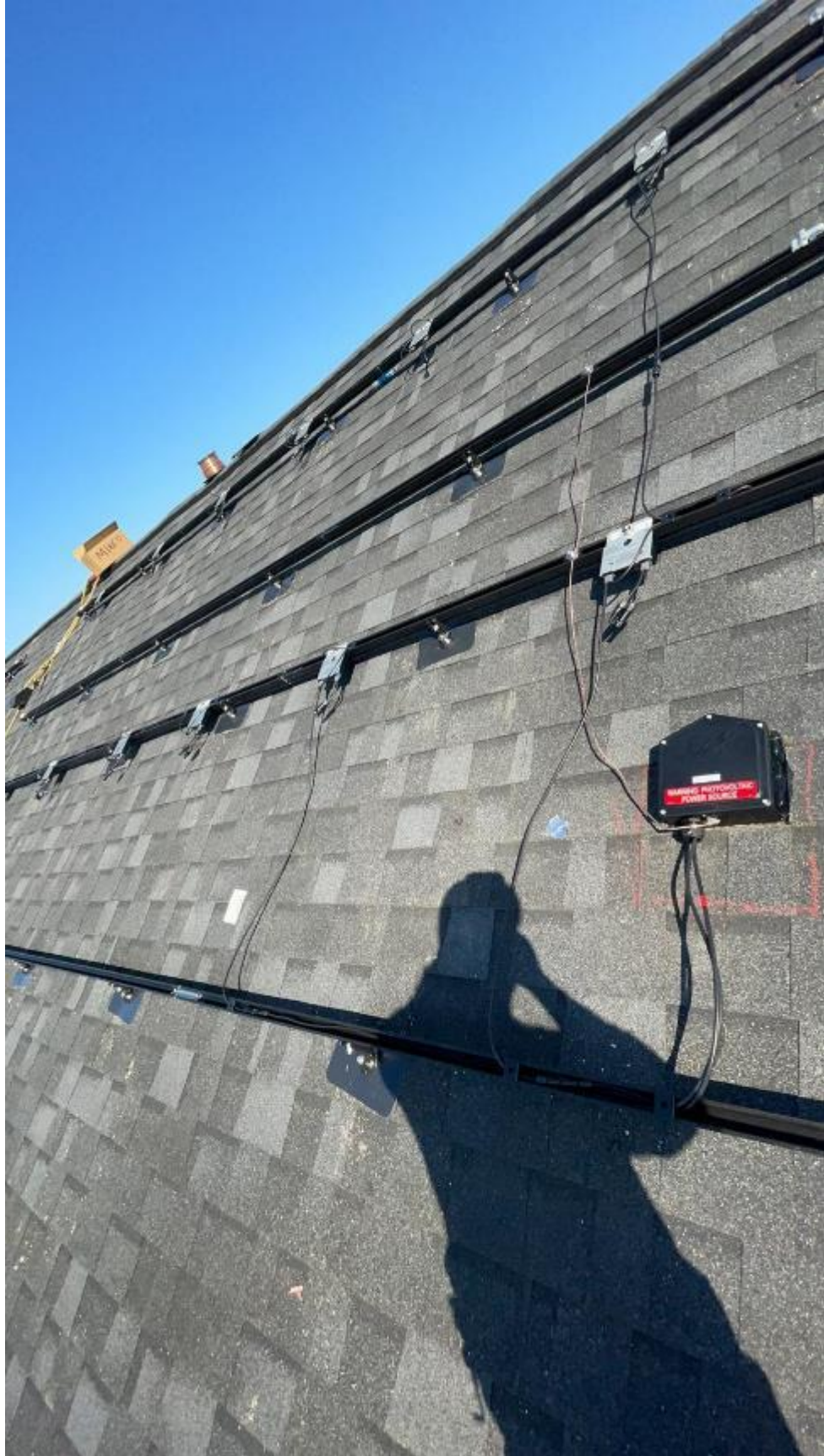






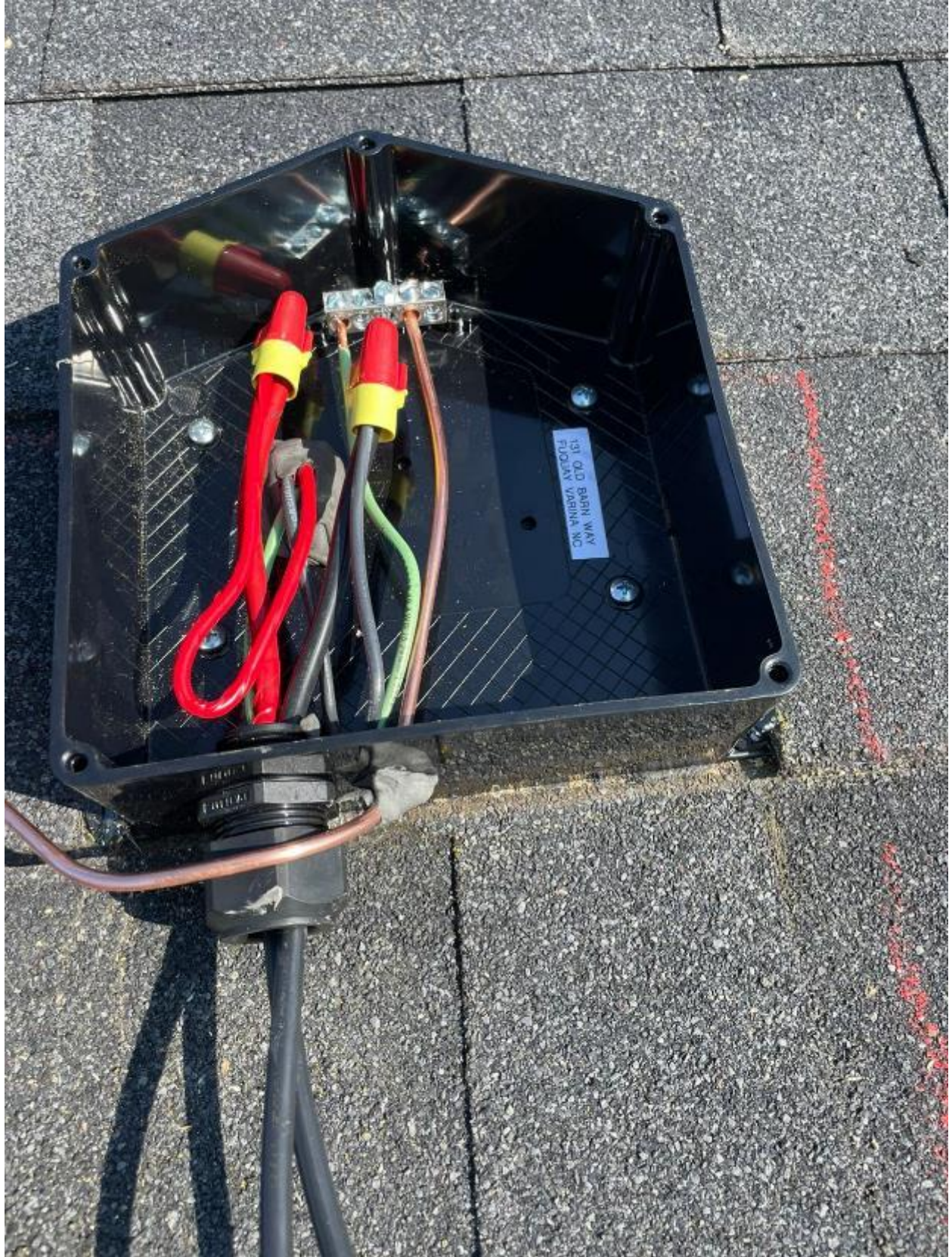






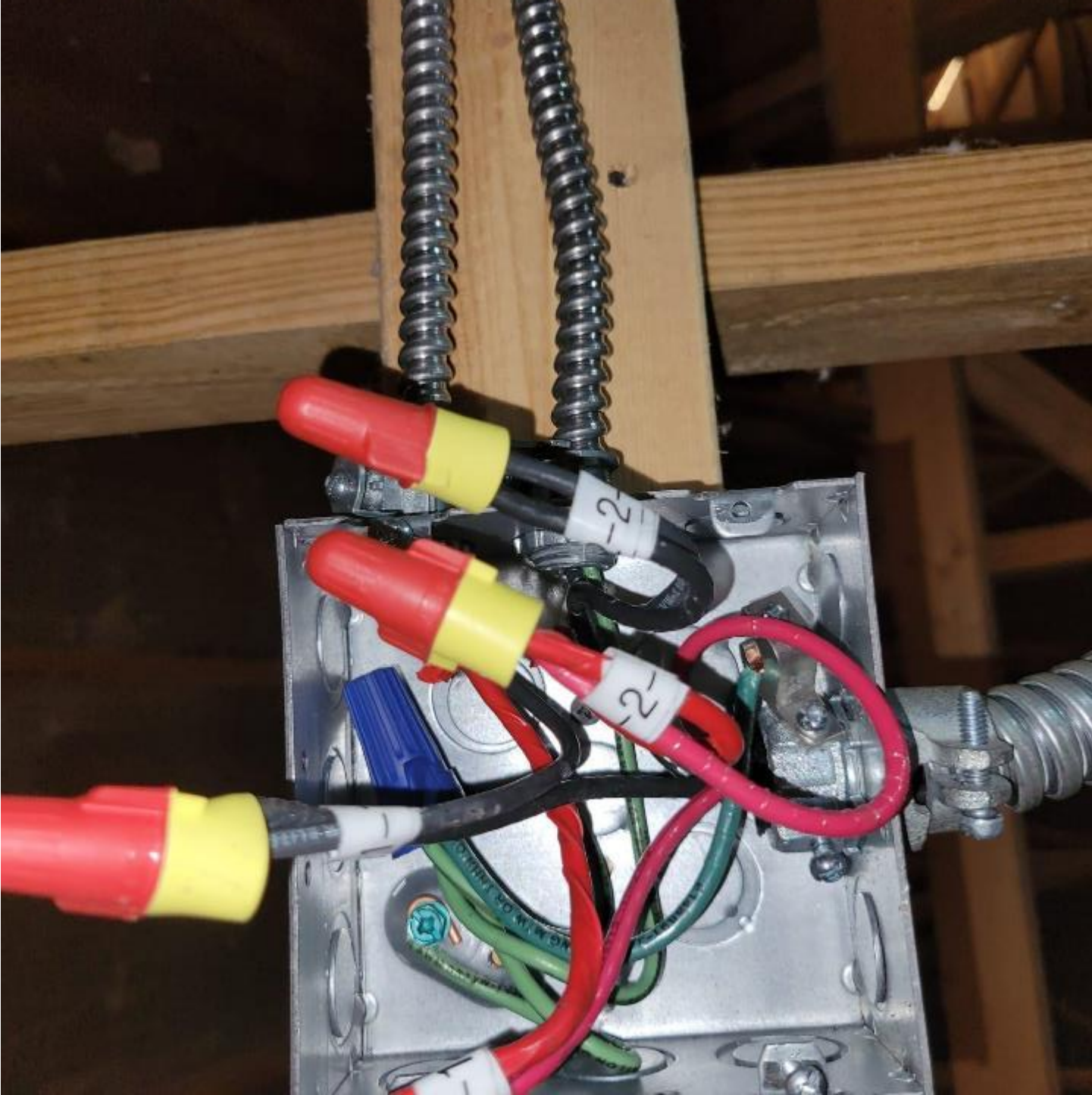






131 OLD BARRI WAY  
FLORENCE VIRGINIA, NC



















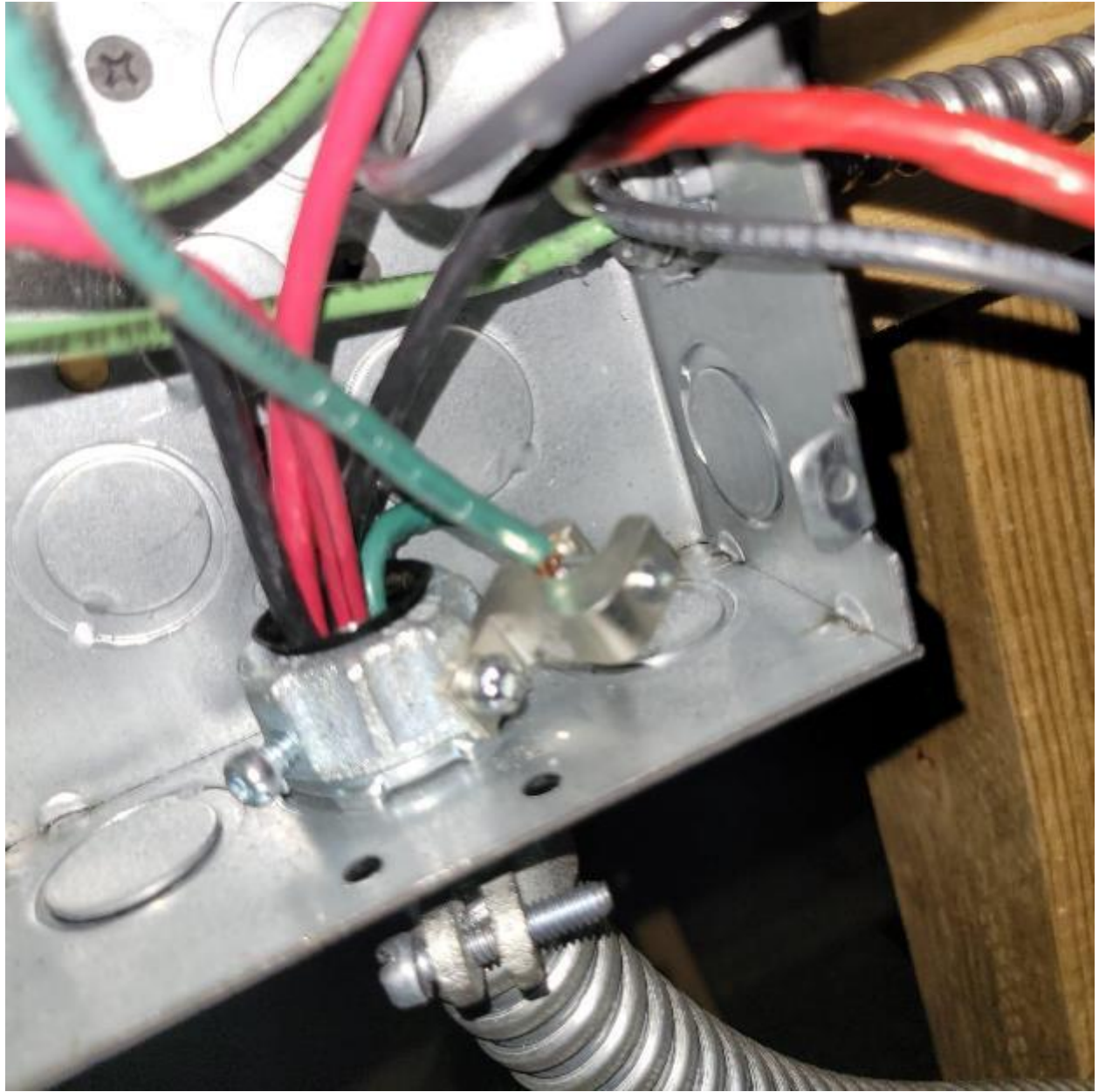


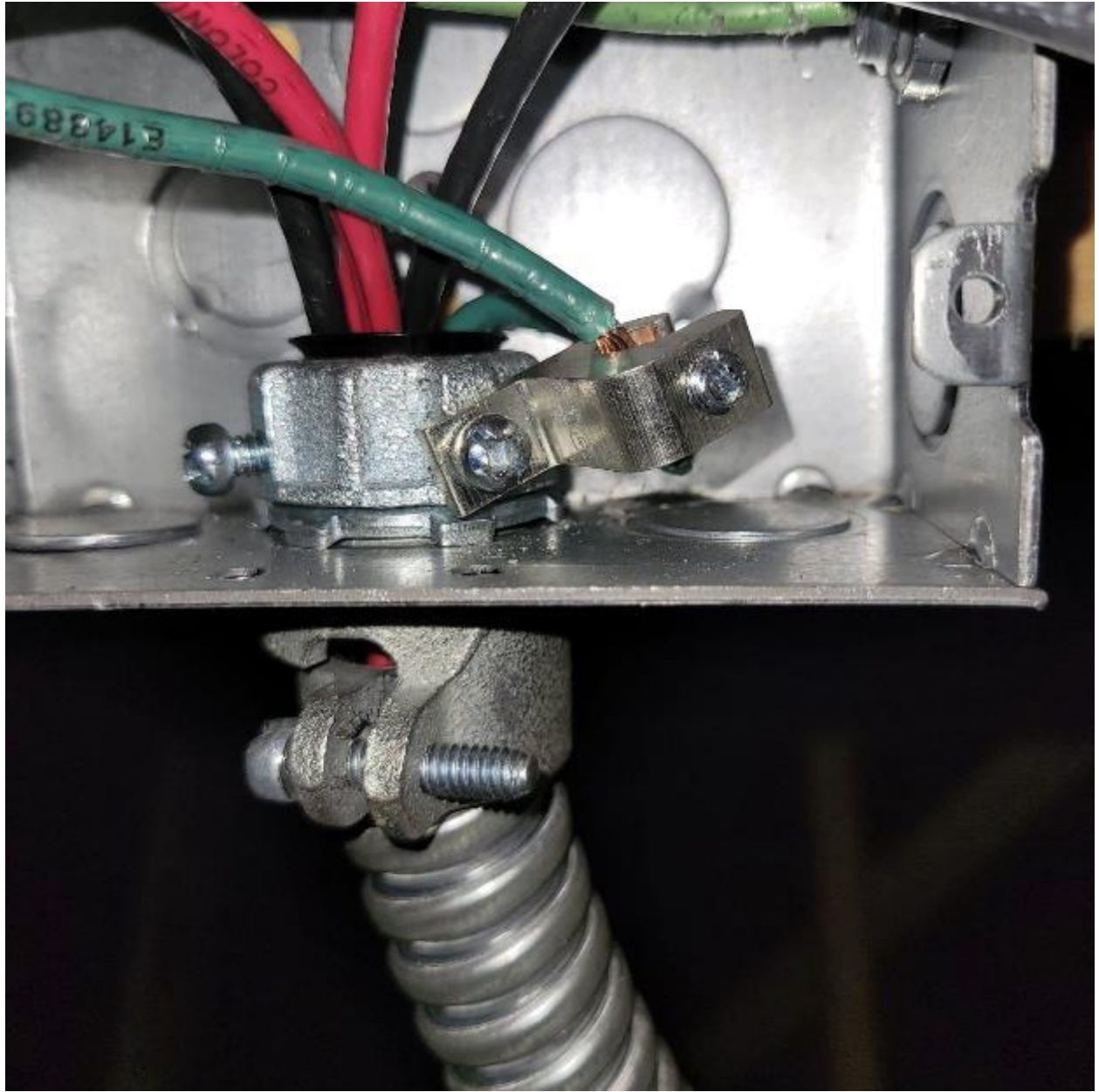
























**WARNING**  
THIS SERVICE METER  
IS ALSO SERVED BY A  
PROTECTED TAG SYSTEM

**CAUTION**



**⚠ WARNING**  
ELECTRIC SHOCK HAZARD  
TERMINALS ON THE LINE AND  
LOAD SIDES MAY BE ENERGIZED  
IN THE OPEN POSITION

**SOLAR AC DISCONNECT LOCATED AT**  
SEE PERMITS FOR LOCATION  
OR ASK THE INSTALLER

**PHOTOVOLTAIC POWER SOURCE**  
OPERATING VOLTAGE 240 V  
MAXIMUM OPERATING  
ALCIRCUIT CURRENT 32 A

**⚠ WARNING**  
TURN OFF PHOTOVOLTAIC  
AC DISCONNECT PRIOR TO  
WORKING INSIDE PANEL

**⚠ WARNING**  
POWER SOURCE  
OUTPUT CONNECTION  
DO NOT RELOCATE THIS  
OVERCURRENT DEVICE

**SOLAR PV SYSTEM EQUIPPED  
WITH RAPID SHUTDOWN**  
TURN RAPID SHUTDOWN  
SWITCH TO THE  
"OFF" POSITION TO  
SHUT DOWN PV SYSTEM  
AND REDUCE  
SHOCK HAZARD  
IN THE ARRAY

