

GENERAL DUTY SAFETY SWITCH
INTERRUPTOR DE SEGURIDAD GENERAL
 60 A
 240 Vac / V~

QUARE D®

⚠ DANGER / PELIGRO
HAZARD OF ELECTRIC SHOCK, EXPLOSION, OR ARC FLASH
PELIGRO DE DESCARGA ELÉCTRICA, EXPLOSIÓN O DESTELLO POR ARQUEO

Use only appropriate personal protective equipment (PPE) and follow safe critical work practices. e NFPA 70E. is equipment must only be installed and serviced by qualified electrical personnel.

Never operate energized switch with door open. Keep door fastened.

Turn off switch before removing or installing fuses or making load side connections.

Always use a properly rated voltage sensing device at all line and load fuses to confirm switch is off.

Turn off power supplying switch before making any other work on or inside switch.

Do not use renewable link fuses in fused switches.

Failure to follow these instructions will result in death or serious injury.

To lock out switch, place padlock hasp through hole in lockplate and above handle.

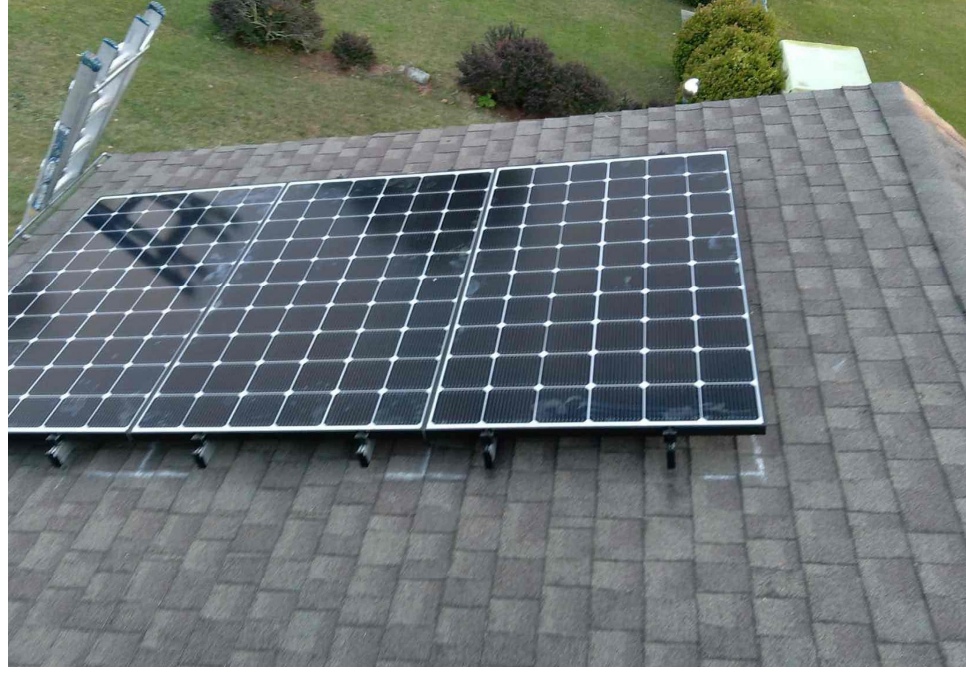
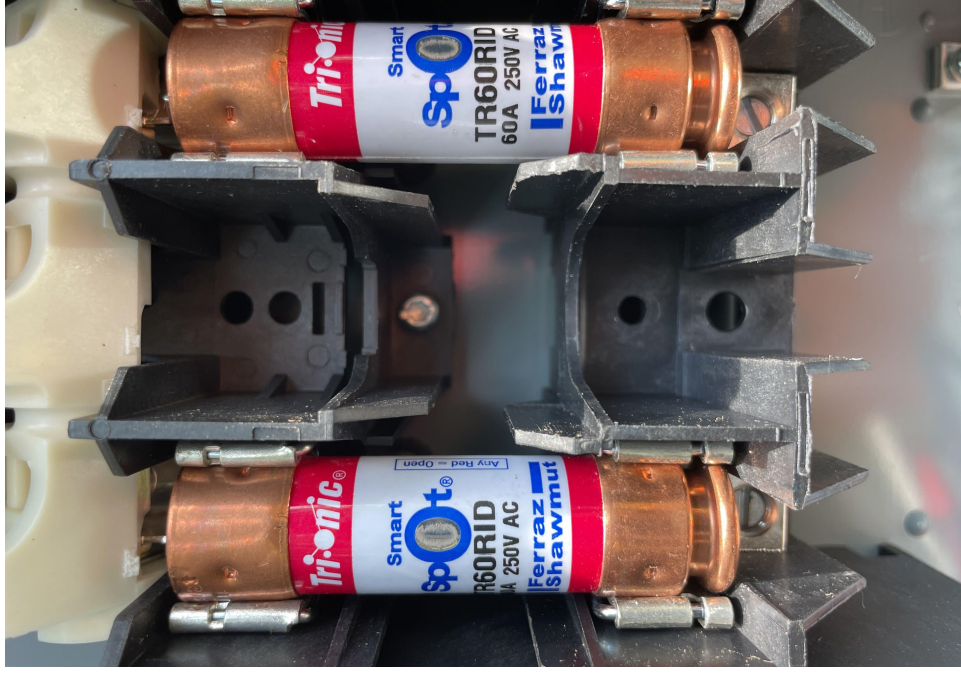
40275-942-02

Utilice equipo de protección personal (EPP) apropiado y siga las prácticas de seguridad eléctrica establecidas por su Compañía (consulte la norma NFPA 70E).

- Solamente el personal eléctrico especializado deberá instalar y prestar servicio de mantenimiento a este equipo.
- Nunca haga funcionar el interruptor con la puerta abierta cuando esté energizado. Mantenga la puerta asegurada.
- Desenergice el interruptor antes de extraer o instalar fusibles o de hacer conexiones en el lado de carga.
- Siempre utilice un dispositivo de tensión nominal adecuado en los clips para fusibles de los lados de carga y línea para confirmar la desenergización del interruptor.
- Desenergice el interruptor antes de realizar cualquier otro trabajo en el interruptor.
- No utilice fusibles de cinta renovables en los interruptores de fusible.

El incumplimiento de estas precauciones podrá causar la muerte o lesiones serias.

Para bloquear el interruptor, la aldaaba del candado debe pasar por el agujero en la placa de inmovilización y por encima de la manija.

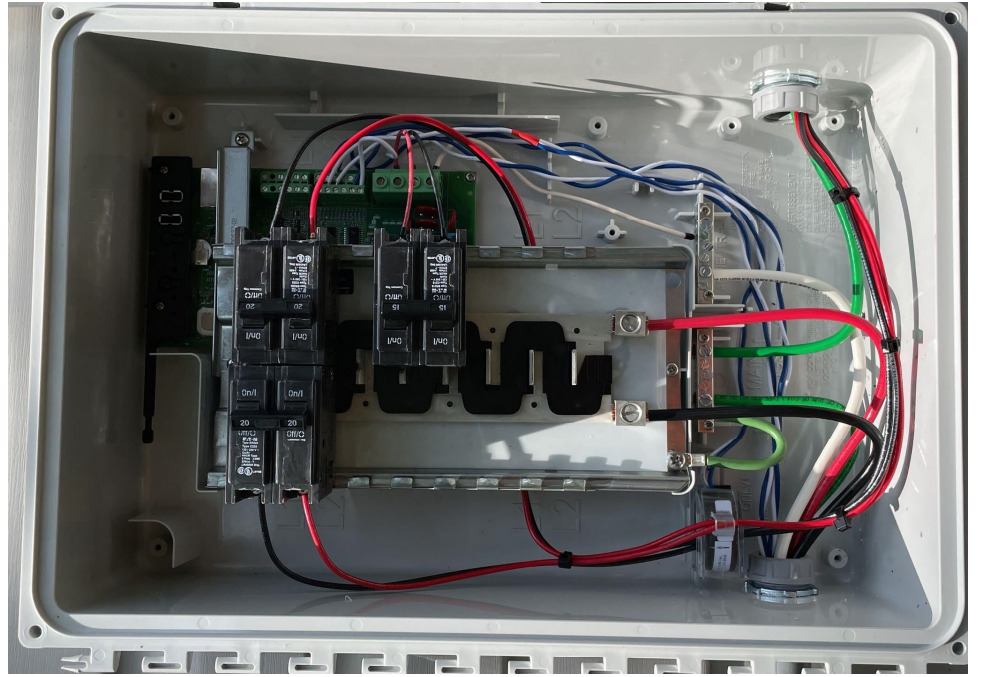
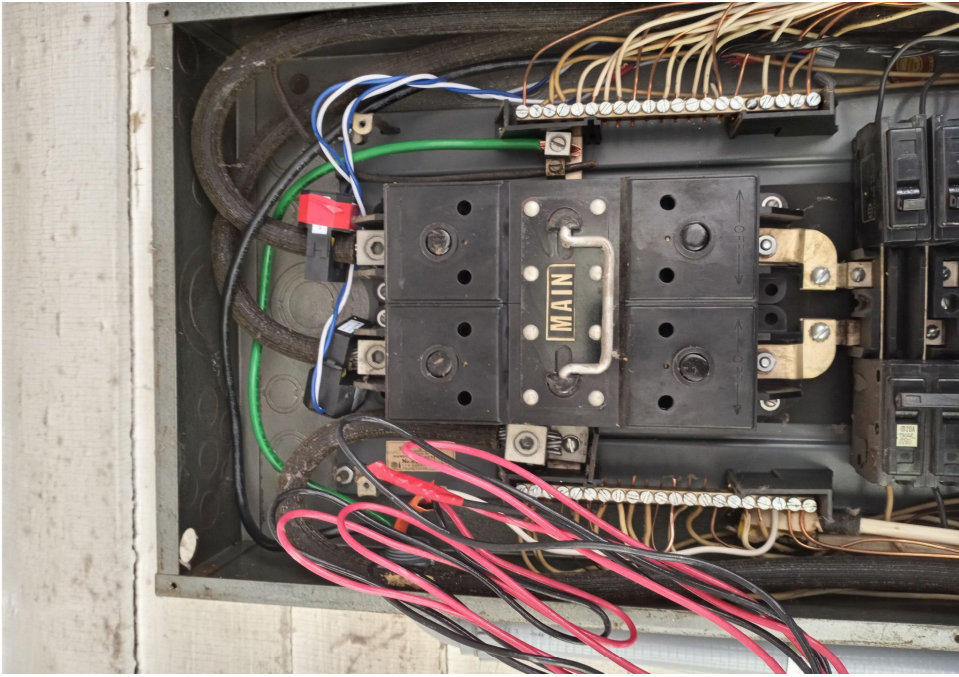
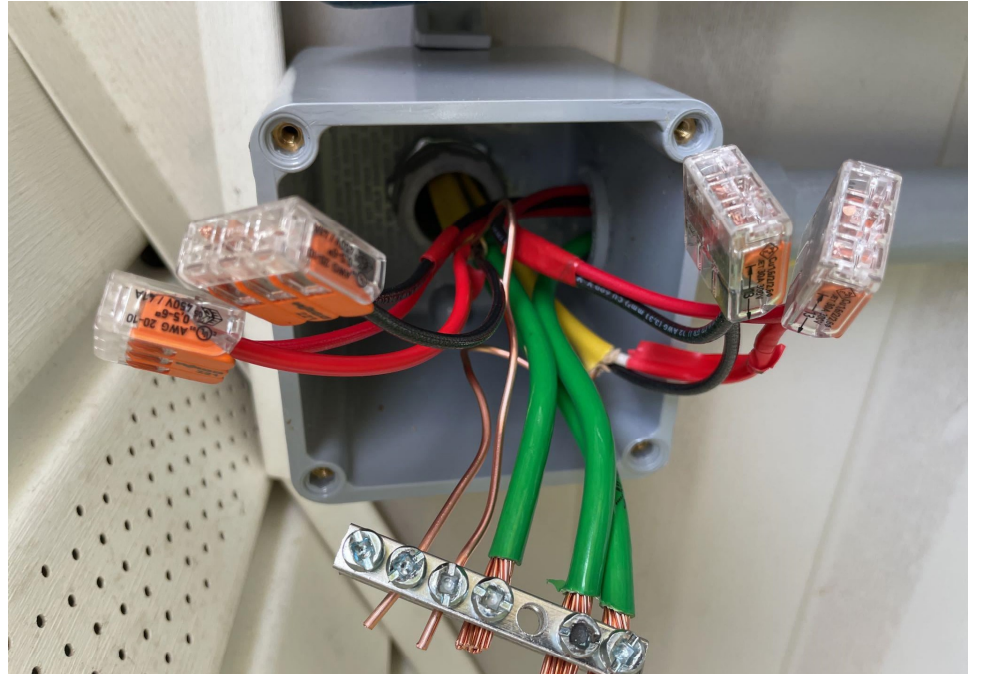
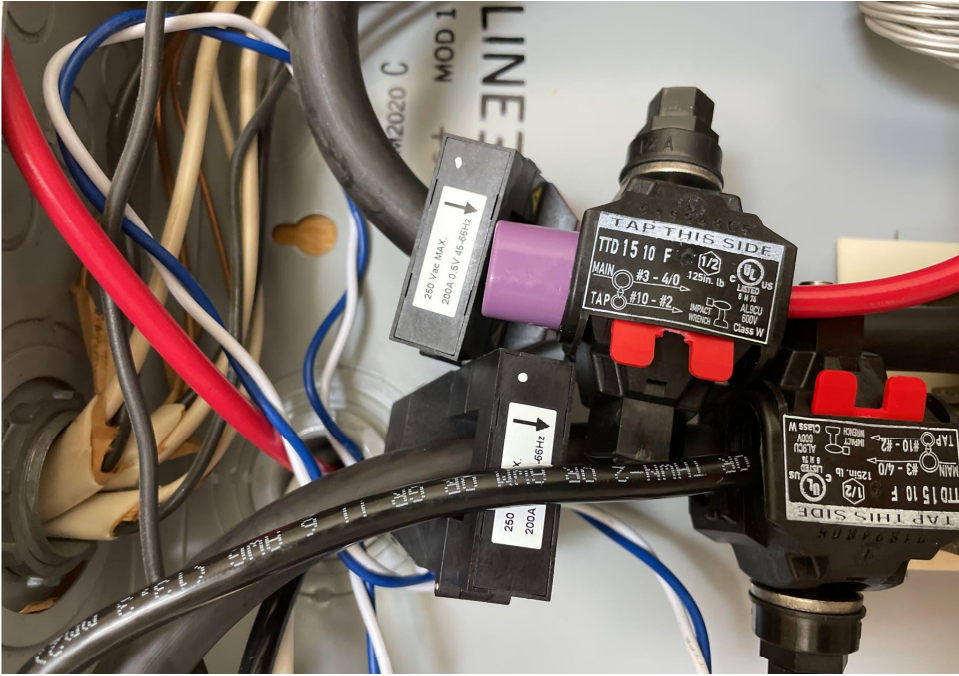


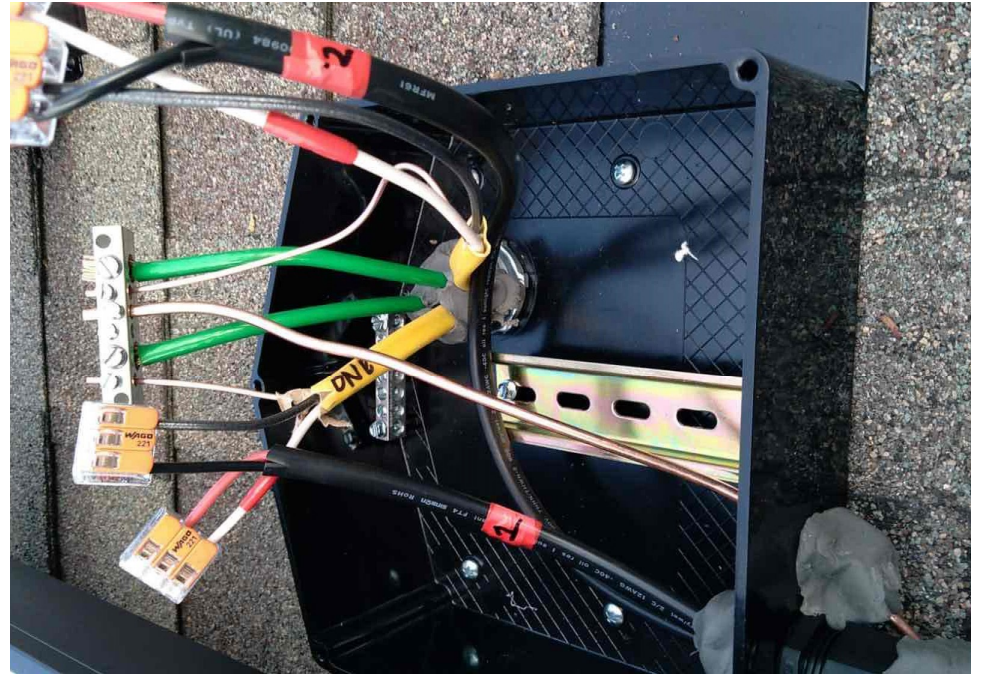
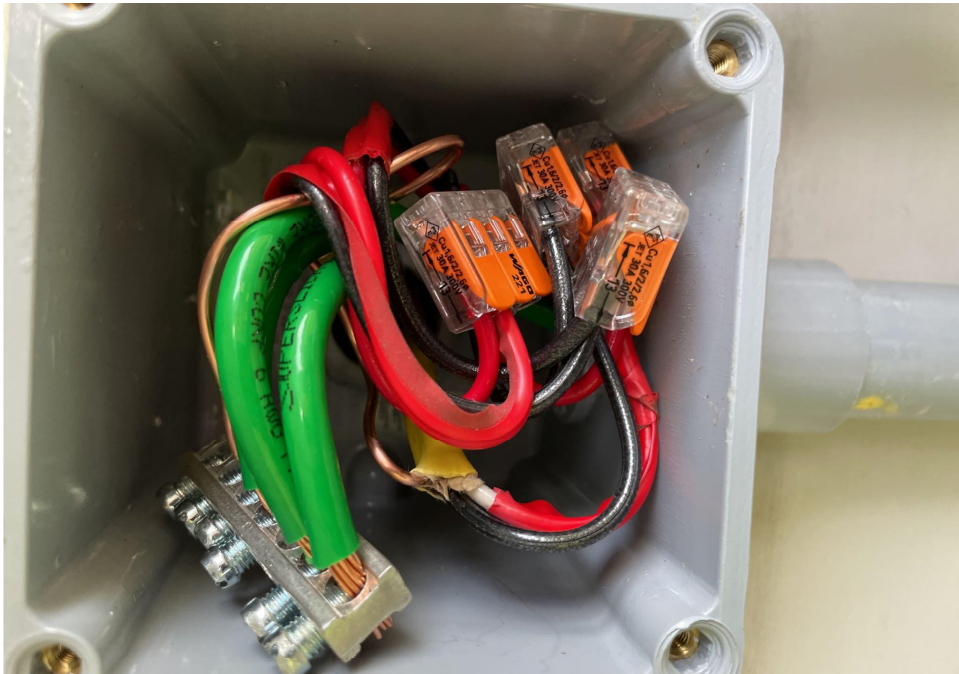
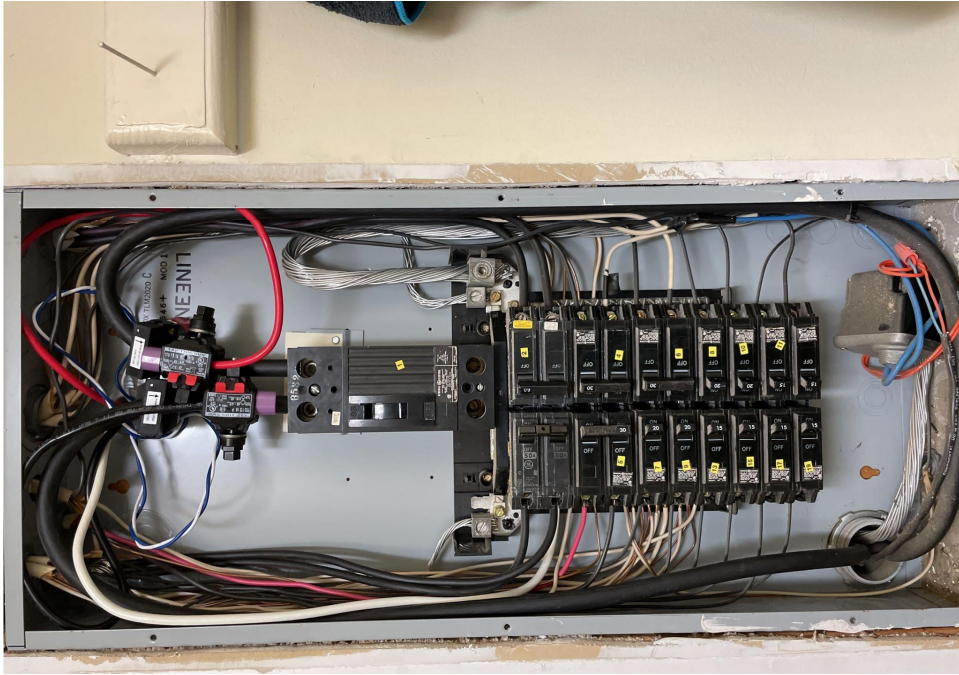


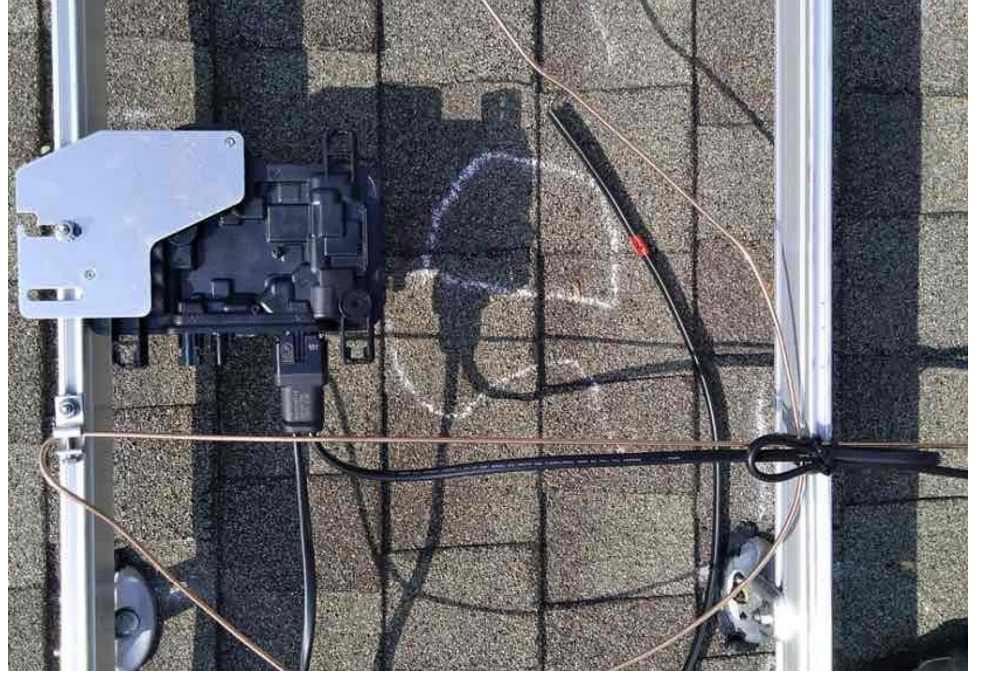


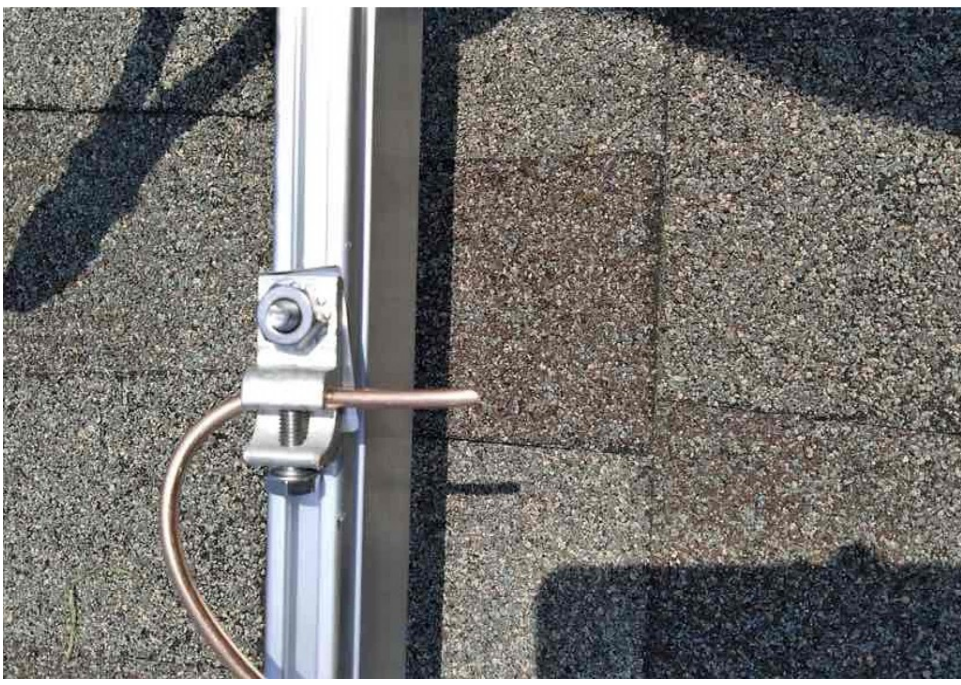
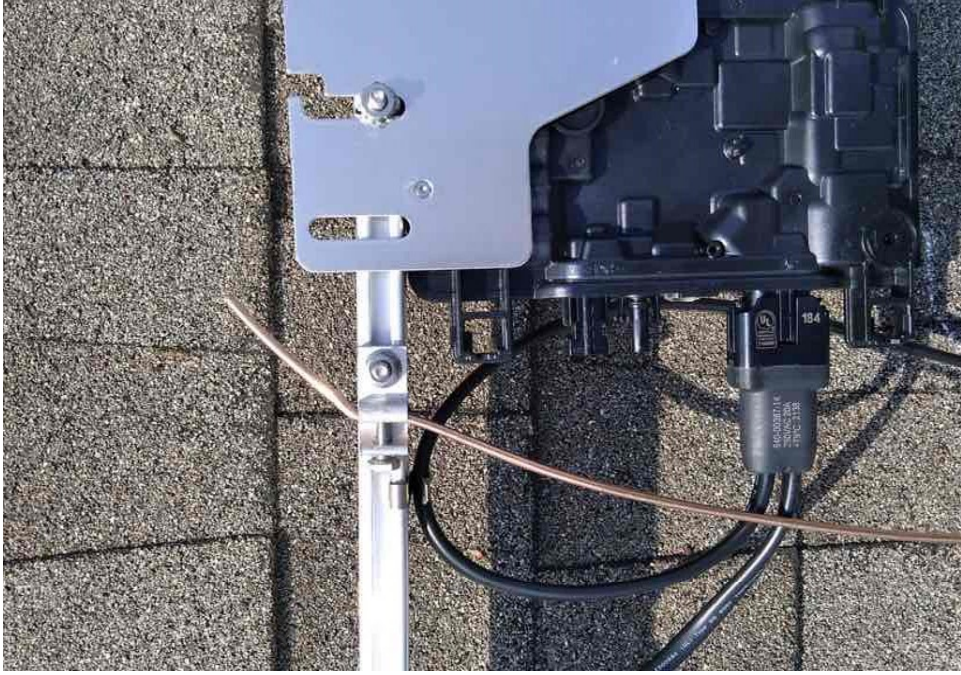











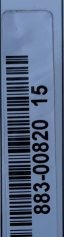


UL CERTIFIED SAFETY U.S. & CAN. SECURITE U.S. & CA E341166

IQ Combiner 3 ES
 Photovoltaic
 Combiner Box
 X-IQ-AM1-240-3-ES

Electrical ratings
Voltage 240VAC, 60Hz
DG Breakers 80A MAX (combined)
DG Inputs 64A MAX (combined)
Output 65A MAX, 90A MAX feeder OCPD
Temperature 46°C MAX ambient
 For DG breakers use only Eaton BR series

S/N:  **202146087672**

P/N:  **883-00820 15**

**Dedicated solar and DG Combiner Box - do not add loads
 10 AMP or 15 AMP Envoy Breaker not used for backfeed**

Connection	Wire sizes	Torque
DG Breaker	14-10 AWG 8 AWG 6-4 AWG	2.2 Nm (20 lb-in) 2.8 Nm (25 lb-in) 3.0 Nm (27 lb-in)
60A Circuit Breaker only	4-1/0 AWG	5.0 Nm (45 lb-in)
Neutral and ground		
Large screw	14-1/0 AWG	5.0 Nm (45 lb-in)
Small screw	6-14 AWG	2.2 Nm (20 lb-in)
Main lug	10-4 AWG 3-2/0 AWG	5.0 Nm (45 lb-in) 5.6 Nm (50 lb-in)





