

50STRING 2
"50 WINDFIELD CT LILLINGTON NC

 **SOLADECK**
www.rstcenterprises.com



Photovoltaic Combiner/Enclosure Conforms to UL 1741; Certified to CSA C22.2 No. 250; Nema Type 3R

Q1 Q2 Q3 Q4 21 22 23 24

0799 Series 0799 E-Series 0766-41AD

Maximum Ratings: 1000 VDC/180 AMPS; 480 VAC/60 AMPS

⚠ WARNING		⚠ AVERTISSEMENT	
	HIGH VOLTAGE. KEEP OUT! RISK OF ELECTRICAL SHOCK. ONLY TRAINED SERVICE PERSONNEL ALLOW ACCESS. SUITABLE FOR PHOTOVOLTAIC USE. APPROVED FOR USE WITH FIELD-INSTALLED CONDUCTORS SIZED FOR AN ALLOWABLE AMPACITY OF 55 AT 90 °C. AN EXTERNAL OUTPUT CIRCUIT DISCONNECTING MEANS SHALL BE PROVIDED WHEN REQUIRED BY THE CANADIAN ELECTRICAL CODE. PART I. WARNING: MORE THAN ONE LIVE CIRCUIT. SEE DIAGRAM.		HAUTE TENSION, GARDER HORS! RISQUE DE CHOC ELECTRIQUE. SEUL LE PERSONNEL DE MAINTENANCE QUALIFIE EST ACCES AUTORISE POUR L'USAGE PHOTOVOLTAIQUE. APPROUVE POUR UTILISATION AVEC DES CONDUCTEURS INSTALLES SUR PLACE DE GROSSEUR CONVENANT A UN COURANT ADMISSIBLE DE 55 AT 90°C. DISPOSITIF DE SECTIONNEMENT DU CIRCUIT DE SORTIE EXTERNE OBLIGATOIRE SI EXIGE PAR LE CODE CANADIEN DE L'ELECTRICITE. PREMIERE PARTIE. AVERTISSEMENT: PLUSIEURS CIRCUITS SOUS TENSION. VOISONS SCHEMA.

R.S.T.C. Enterprises
Patent No. US 7,626,118 B1

ENCLOSURE MUST BE GROUNDED
for Rebus communication



RCP: 000100130CD69
S/N: S2502-B8573
MFG: B
Date: Q4-21

ENCLOSURE MUST BE GROUNDED
for Rebus communication

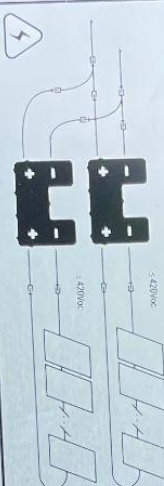


GENERAC

PV Link / S2502

Snappers™ compatible substring optimizer
Pv/rapid shutdown system equipment

IMPORTANT INSTALLATION INSTRUCTIONS:



Input:
Max 420V temperature corrected V_{oc}
SINGLE STRING INPUT
Dual string input requires approval.

Output:
Connect PV Links to inverter Rebus terminals in parallel.



WARNING
CANCER AND REPRODUCTIVE HAZARD
www.P65Warnings.ca.gov

Made in Vietnam
Conforms to UL 1741, UL 16998
Certified to CSA C22.2 #107.1

MAX CONT. OUTPUT POWER	3600 W
STANDBY POWER	1.1 W
MAX INPUT VOLTAGE	200-580 VDC
MAX INPUT VOLTAGE	600-580 VDC
MAX INPUT VOLTAGE	420 V
MAX OUTPUT VOLTAGE	420 V
MAX AMBIENT TEMP.	40 °C
MAX OUTPUT CURRENT PROTECTION	13 A
MAX INPUT CURRENT (OVBK CIRCUIT)	18 A
MAX OUTPUT CURRENT (SHORT CIRCUIT)	13 A @ 90°C, 10 A @ 70°C
MAX OUTPUT CURRENT (FAULT)	18 A
PROTECTIONS	18 A
	TYPE A
	BOOST CONVERTER
	DC Arc Fault
	Circuit Protection Type 1 PVSE

Rebus DC Nanogrid
PVRSS Controlled Conductor Connection Port
Refer to instructions for conditions of use



WARNING - ELECTRIC SHOCK HAZARD THE DC CONDUCTORS OF THIS PHOTOVOLTAIC SYSTEM ARE ENERGIZED. ELECTRIC SHOCK HAZARD. DC OUTPUT CONDUCTORS MAY BE ENERGIZED REGARDLESS OF SUN EXPOSURE.

CAUTION - RISK OF ELECTRIC SHOCK WHEN THE PHOTOVOLTAIC PANEL IS EXPOSED TO LIGHT, IT SUPPLIES A DC VOLTAGE TO EQUIPMENT CONNECTED TO IT. TO REDUCE THE RISK OF ELECTRIC SHOCK, ALWAYS DISCONNECT EQUIPMENT FROM THE PHOTOVOLTAIC PANEL BEFORE WORKING ON IT.

AVERTISSEMENT - RISQUE DE CHOC ELECTRIQUE LES CONDUCTEURS DE CE SYSTEME PHOTOVOLTAIQUE NE SONT PAS SÉPARÉS À LA SOURCE ET EQUIPEMENT PEUT ÊTRE ENERGISÉ EN TOUTES CIRCONSTANCES.

ATTENTION - RISQUE DE CHOC ELECTRIQUE LORSQUE LE GÉNÉRATEUR PHOTOVOLTAIQUE EST EXPOSÉ À LA LUMIÈRE, IL EQUIPE LE SYSTEME PHOTOVOLTAIQUE D'UNE TENSION CONTINUE. LES CONDUCTEURS SONT ENERGISÉS EN TOUTES CIRCONSTANCES.

PV Substring INPUT
PVRSS Controlled Conductor Connection Port
Refer to instructions for conditions of use





GROUNDING

0013CD69
P-88573

FRAC
PV Link / S2502
SnapRS™ compatible substrating optimizer
PV rapid shutdown system equipment

INSTALLATION INSTRUCTIONS:

Input:
Max 42V_{rms} temperature corrected V_c
SnapRS™ certified substrating optimizer
Field wiring in accordance with applicable code

Output: PV Links to inverter full bus
Invertible in parallel

WARNING: Do not connect to the PV system until the system is grounded and the PV rapid shutdown system is installed.

CAUTION: Do not connect to the PV system until the system is grounded and the PV rapid shutdown system is installed.

WARNING: Do not connect to the PV system until the system is grounded and the PV rapid shutdown system is installed.

WARNING: Do not connect to the PV system until the system is grounded and the PV rapid shutdown system is installed.

WARNING: Do not connect to the PV system until the system is grounded and the PV rapid shutdown system is installed.

WARNING: Do not connect to the PV system until the system is grounded and the PV rapid shutdown system is installed.

WARNING: Do not connect to the PV system until the system is grounded and the PV rapid shutdown system is installed.

WARNING: Do not connect to the PV system until the system is grounded and the PV rapid shutdown system is installed.

WARNING: Do not connect to the PV system until the system is grounded and the PV rapid shutdown system is installed.

WARNING: Do not connect to the PV system until the system is grounded and the PV rapid shutdown system is installed.

WARNING: Do not connect to the PV system until the system is grounded and the PV rapid shutdown system is installed.

WARNING: Do not connect to the PV system until the system is grounded and the PV rapid shutdown system is installed.

WARNING: Do not connect to the PV system until the system is grounded and the PV rapid shutdown system is installed.

WARNING: Do not connect to the PV system until the system is grounded and the PV rapid shutdown system is installed.

ENCLOSURE MUST BE GROUNDING

PV Substring
INPUT

Max 42V_{rms} temperature corrected V_c
SnapRS™ certified substrating optimizer
Field wiring in accordance with applicable code

Output: PV Links to inverter full bus
Invertible in parallel

WARNING: Do not connect to the PV system until the system is grounded and the PV rapid shutdown system is installed.

WARNING: Do not connect to the PV system until the system is grounded and the PV rapid shutdown system is installed.

WARNING: Do not connect to the PV system until the system is grounded and the PV rapid shutdown system is installed.

WARNING: Do not connect to the PV system until the system is grounded and the PV rapid shutdown system is installed.

WARNING: Do not connect to the PV system until the system is grounded and the PV rapid shutdown system is installed.

WARNING: Do not connect to the PV system until the system is grounded and the PV rapid shutdown system is installed.

WARNING: Do not connect to the PV system until the system is grounded and the PV rapid shutdown system is installed.

WARNING: Do not connect to the PV system until the system is grounded and the PV rapid shutdown system is installed.

WARNING: Do not connect to the PV system until the system is grounded and the PV rapid shutdown system is installed.

WARNING: Do not connect to the PV system until the system is grounded and the PV rapid shutdown system is installed.

WARNING: Do not connect to the PV system until the system is grounded and the PV rapid shutdown system is installed.

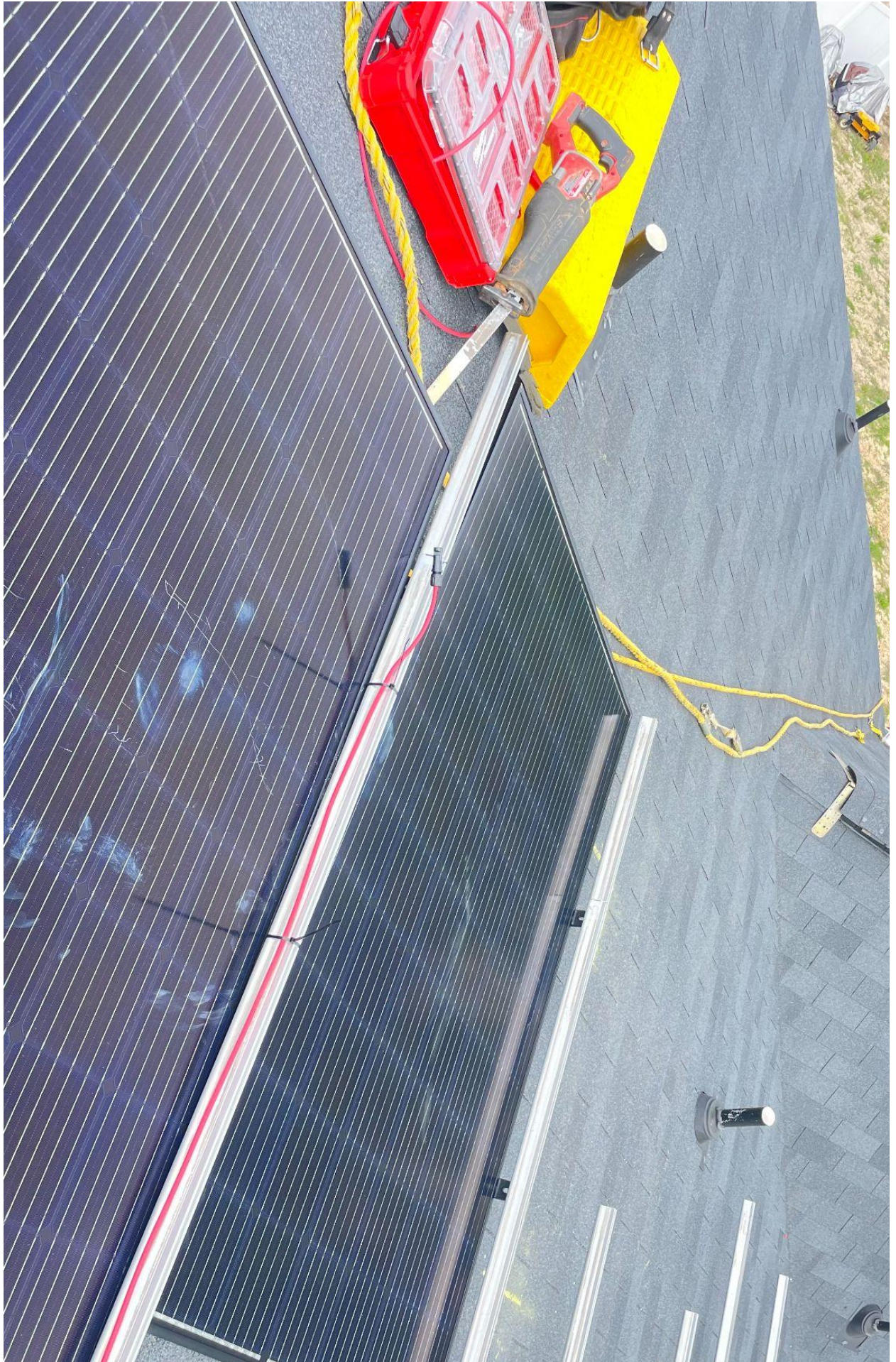
WARNING: Do not connect to the PV system until the system is grounded and the PV rapid shutdown system is installed.

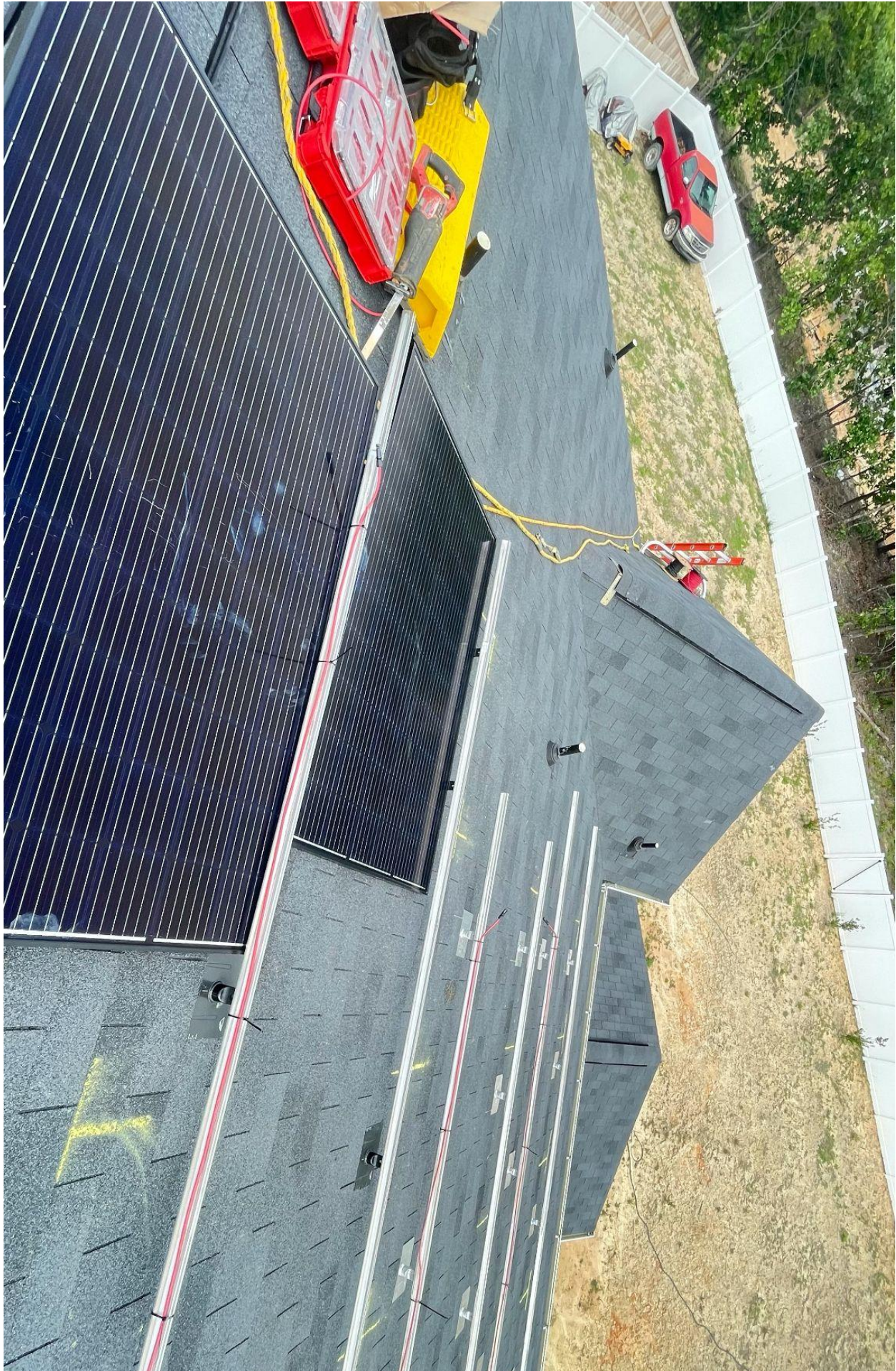
WARNING: Do not connect to the PV system until the system is grounded and the PV rapid shutdown system is installed.

WARNING: Do not connect to the PV system until the system is grounded and the PV rapid shutdown system is installed.





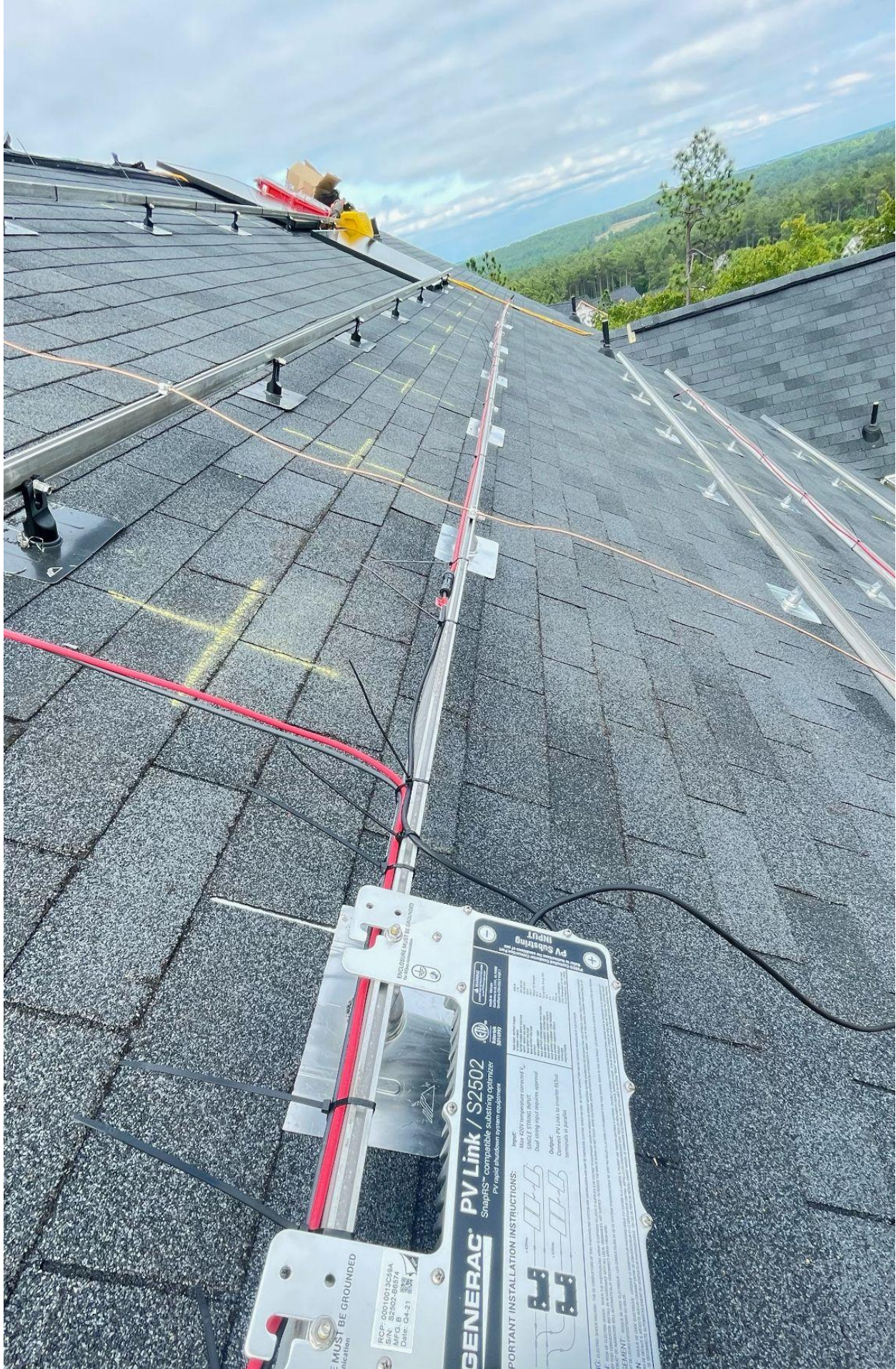












GENERAC PV Link / S2502
SnapRS™ compatible substring optimizer
PV rapid shutdown system equipment

IMPORTANT INSTALLATION INSTRUCTIONS:

NEVER:
- Max. 420V temperature corrected V_{oc}
- SINGLE STRING! (MAY BE)
- Charge from any unapproved apparatus
- Connect PV Links to reverse Polarity
- terminate in parallel

IC- ELECTRIC SHOCK HAZARD: Always use proper safety practices when working on electrical equipment. Always use proper safety practices when working on electrical equipment. Always use proper safety practices when working on electrical equipment.

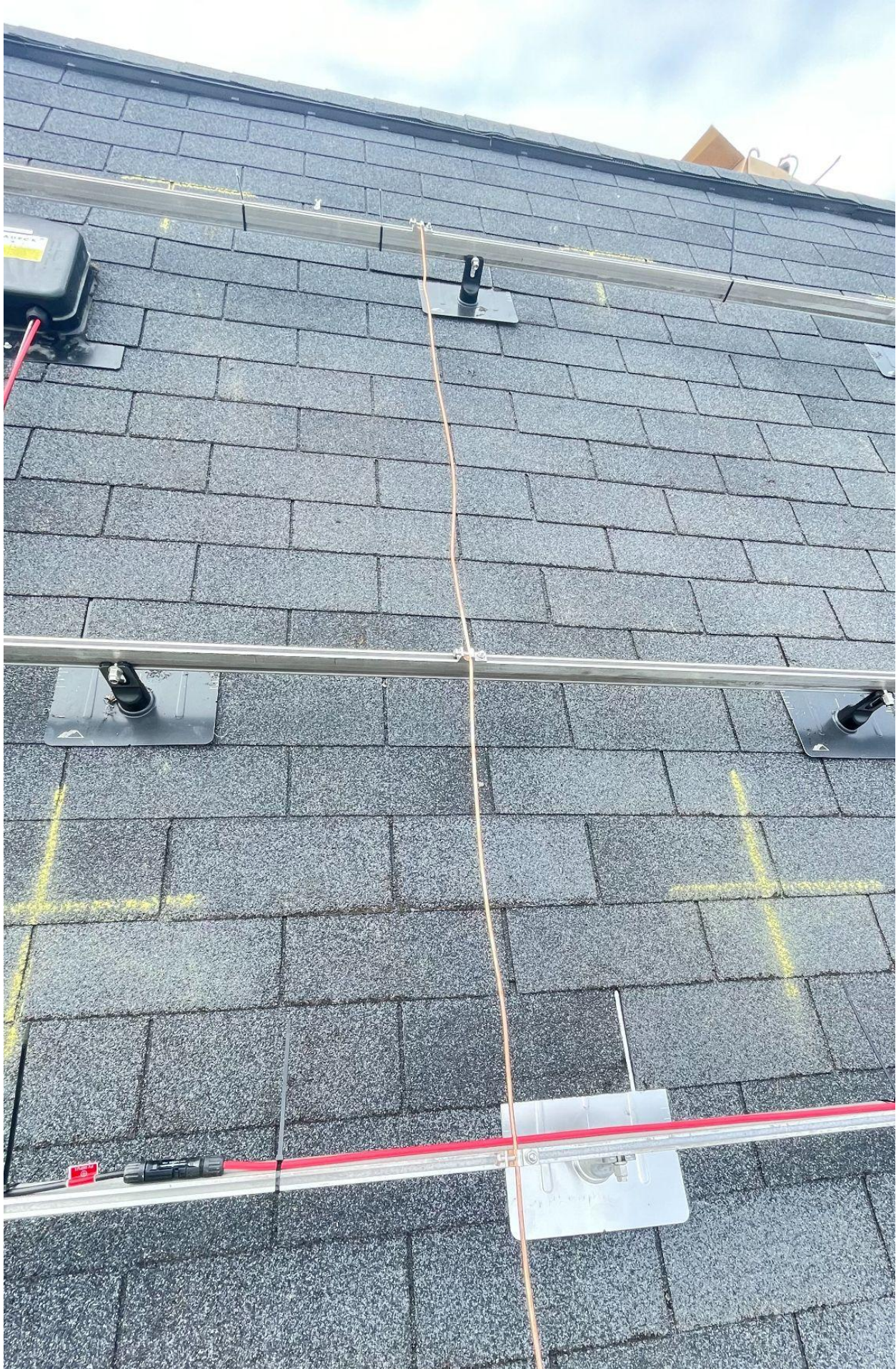
SEMENT: **SEMENT:** **SEMENT:**

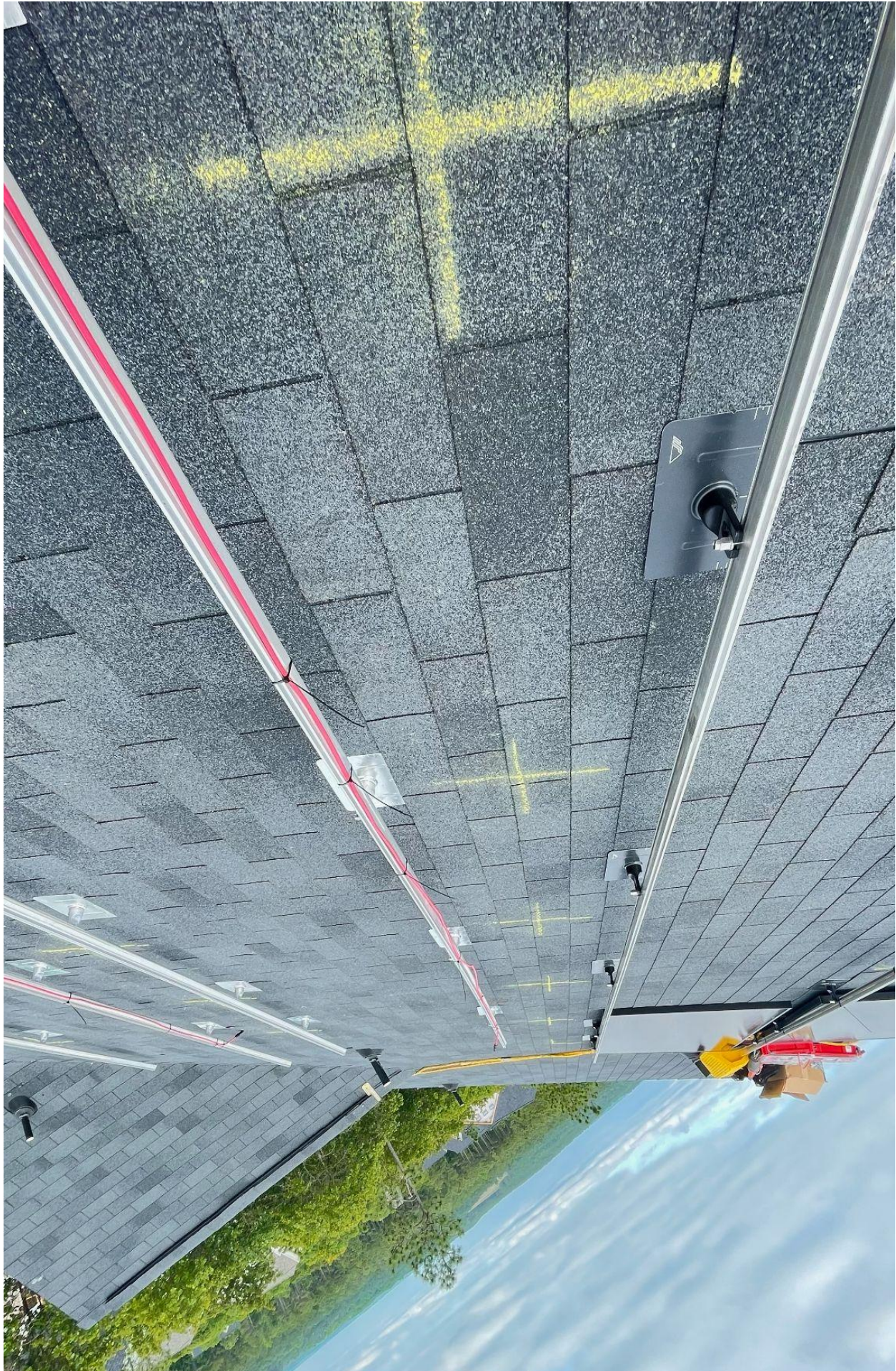
MUST BE GROUNDED

ICP-00100130369A
MFG. # 8502-86574
Date: 04-21

INCLOSURE MUST BE GROUNDED

1000V
PV SnapRS Ad

















NEUTRAL AND...
TO REM...
DISCONNECT...
TRANSFER SYSTEM DATA

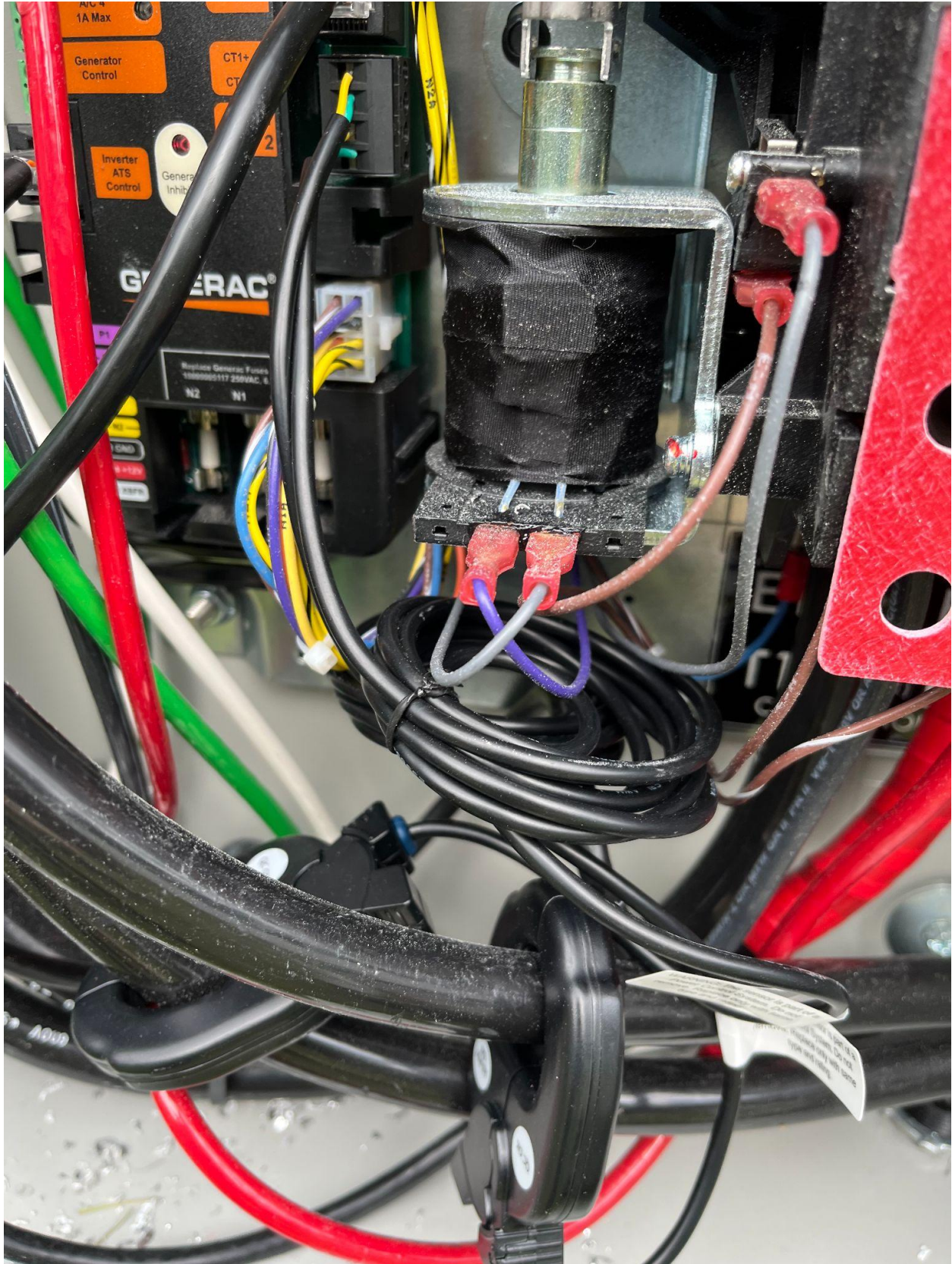
TRANSFER SYSTEM DATA

120/240	SYSTEM VOLTAGE
200	SERIAL NUMBER
240	MODEL NUMBER
200	PRODUCTION DATE
240	AMPS
240	WOLTS
240	Hz
240	90
240	150
240	150
240	150
240	150

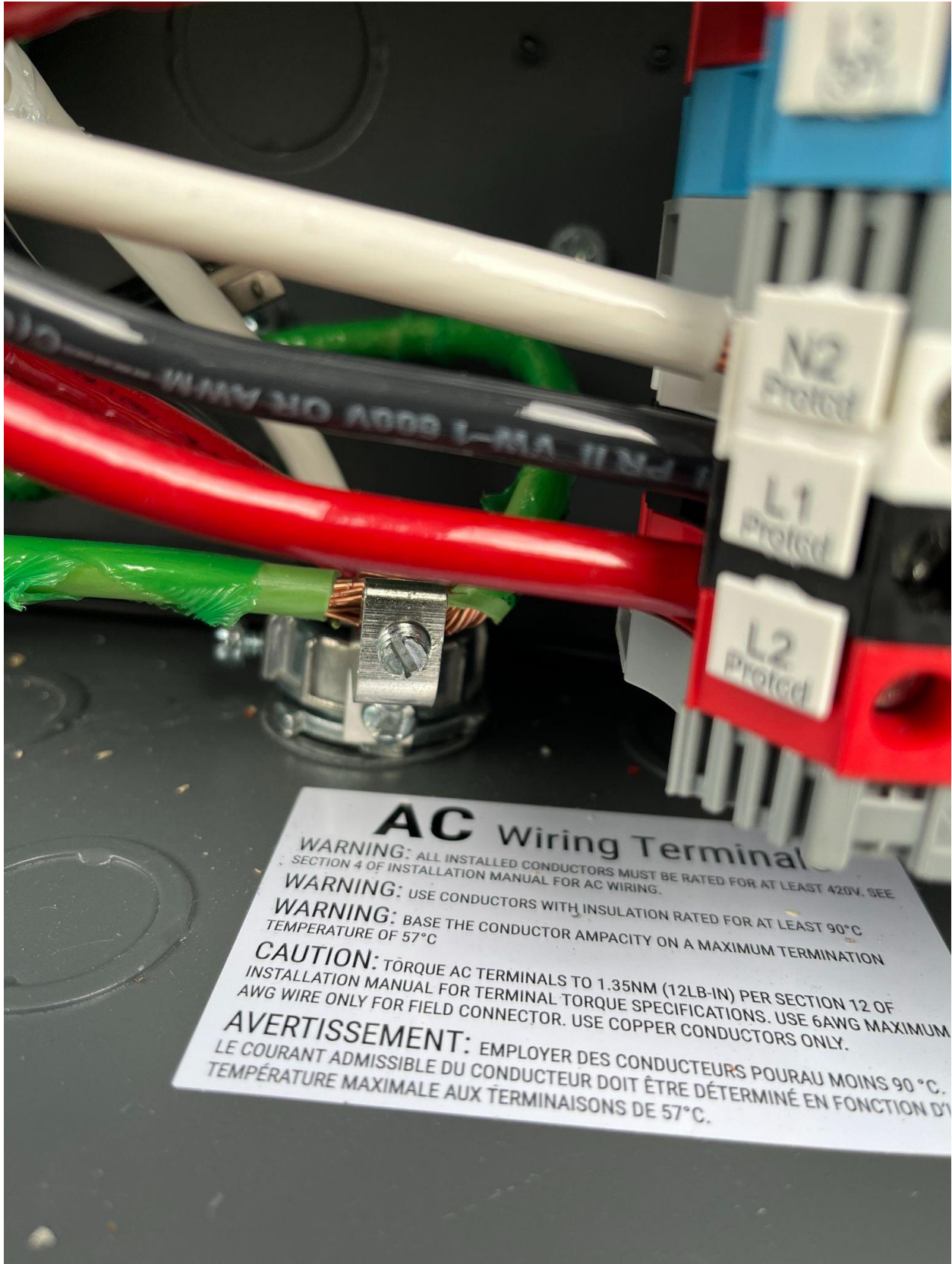
ETL
APPROVED
TRANSFER SYSTEM DATA

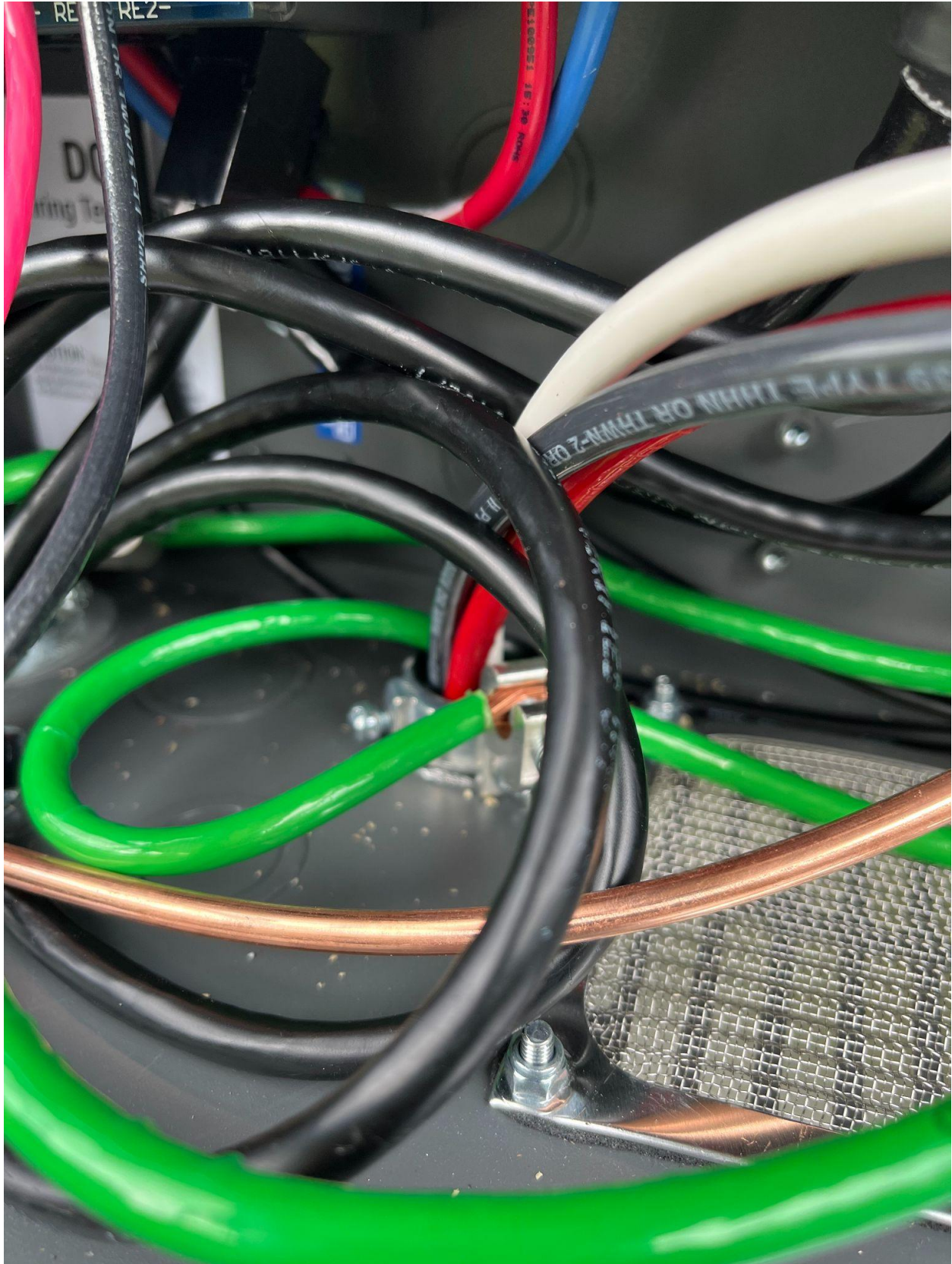
NOT TO EXCEED WIRE OF SWITCH RATING
USE PROPER WIRE SIZE AND WIRE TYPE
SEE ALL SERVICE EQUIPMENT



















08/28/19 11:21

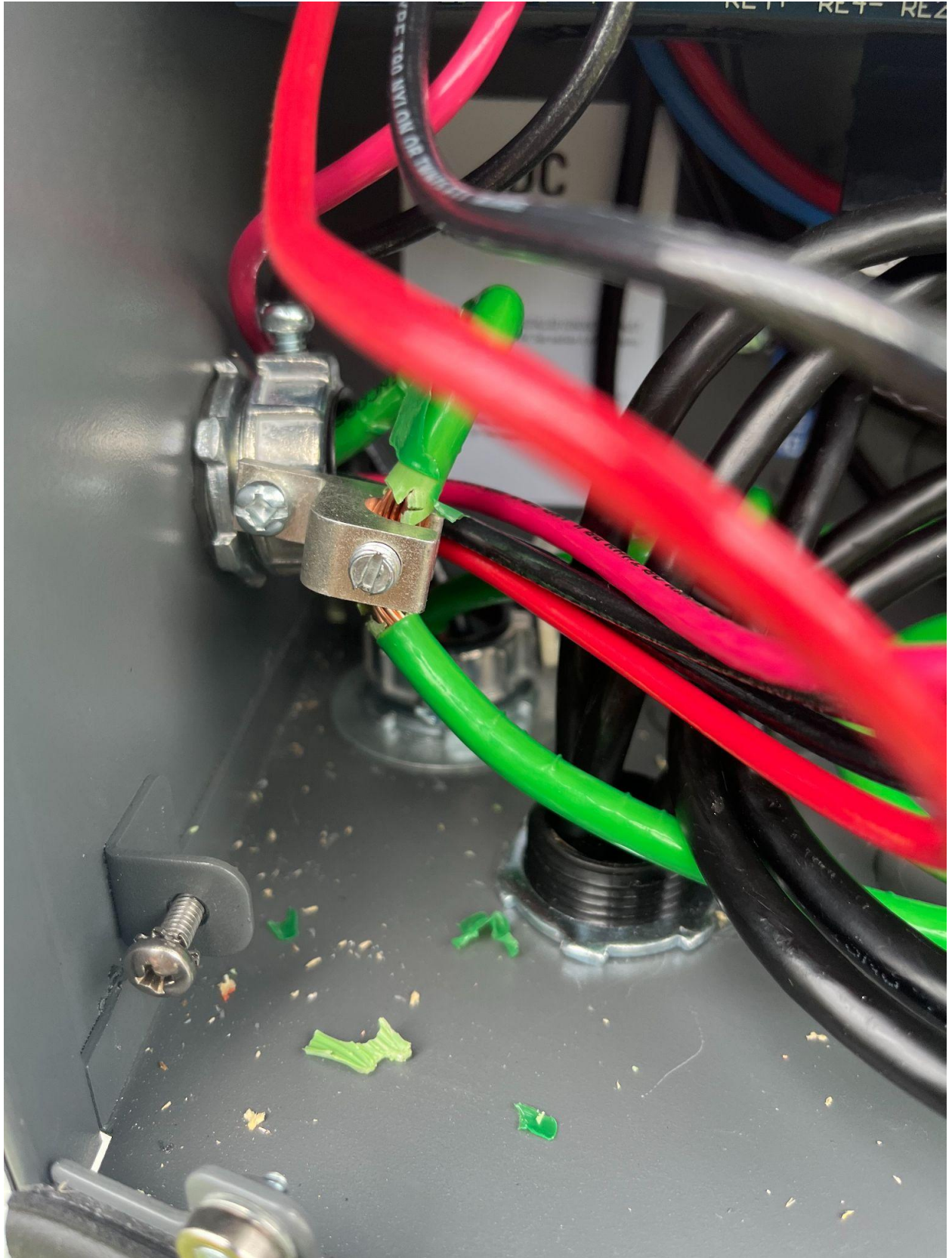
NO CLIPS MAY BE REQUIRED

PERMANENCIA

WARNING: PROTECT CLIP













GENERAC

REGISTER YOUR SYSTEM

SERIAL NUMBER:	XVT07-21936
REGISTRATION CODE:	YAAT-AAKV

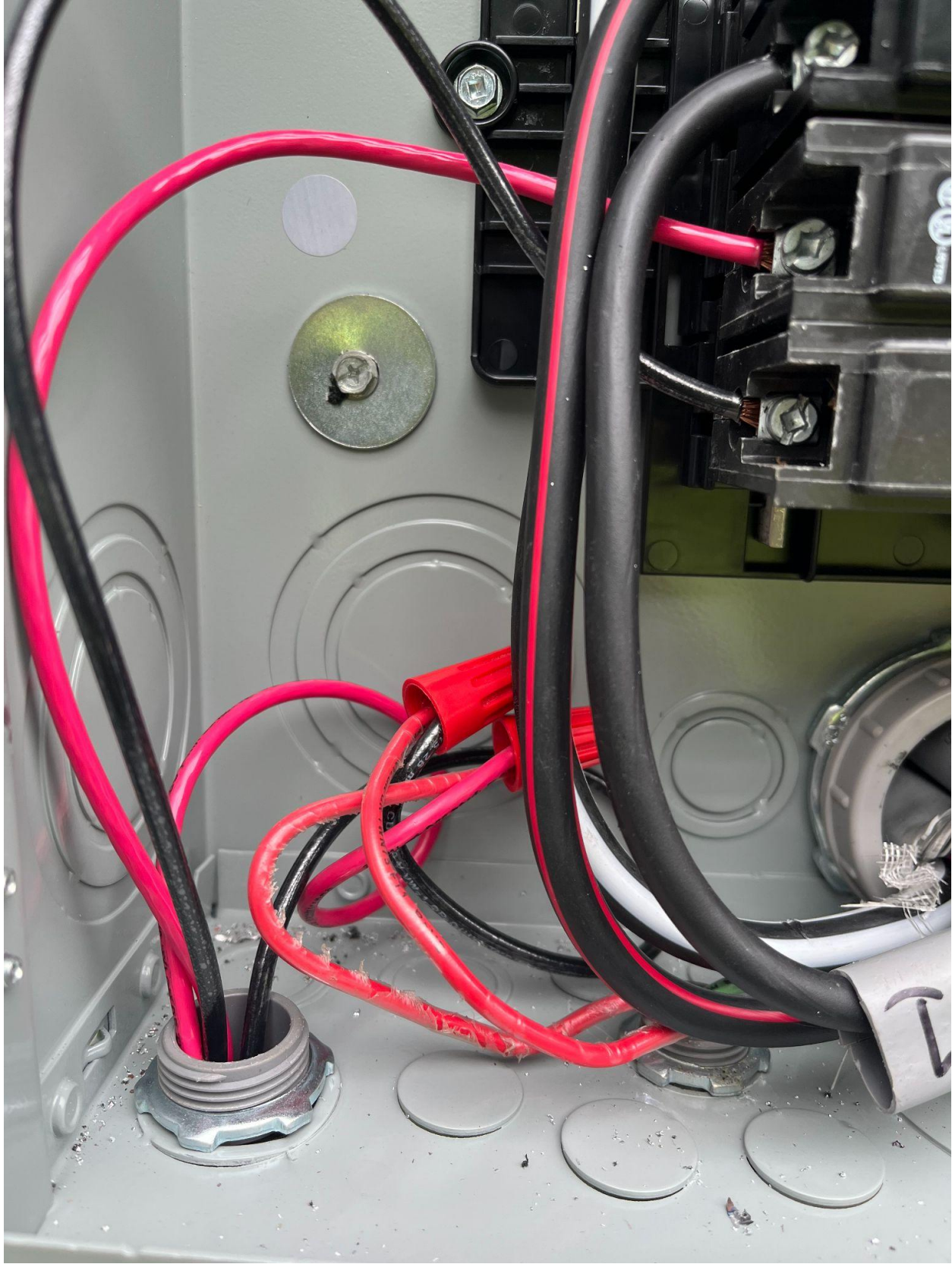




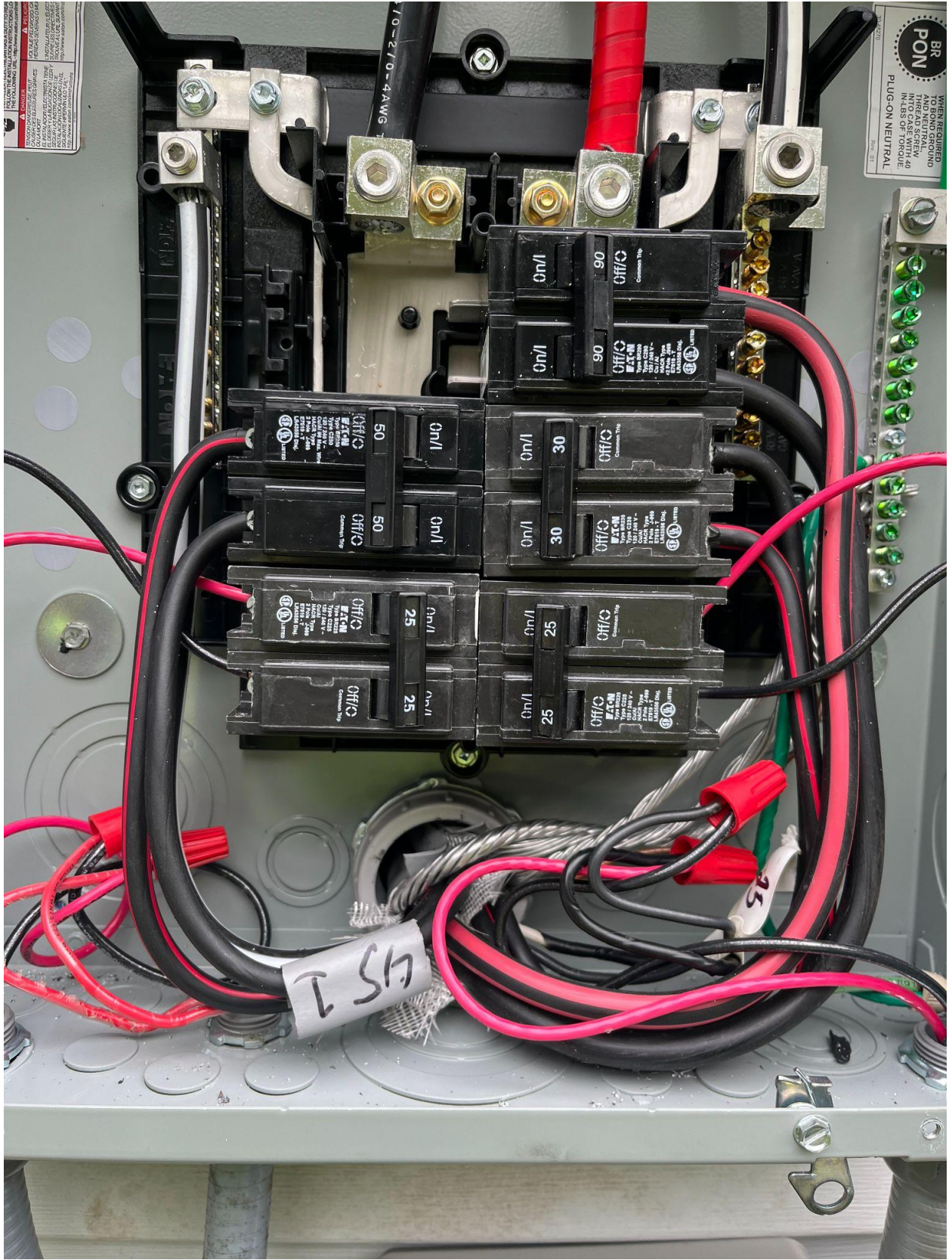


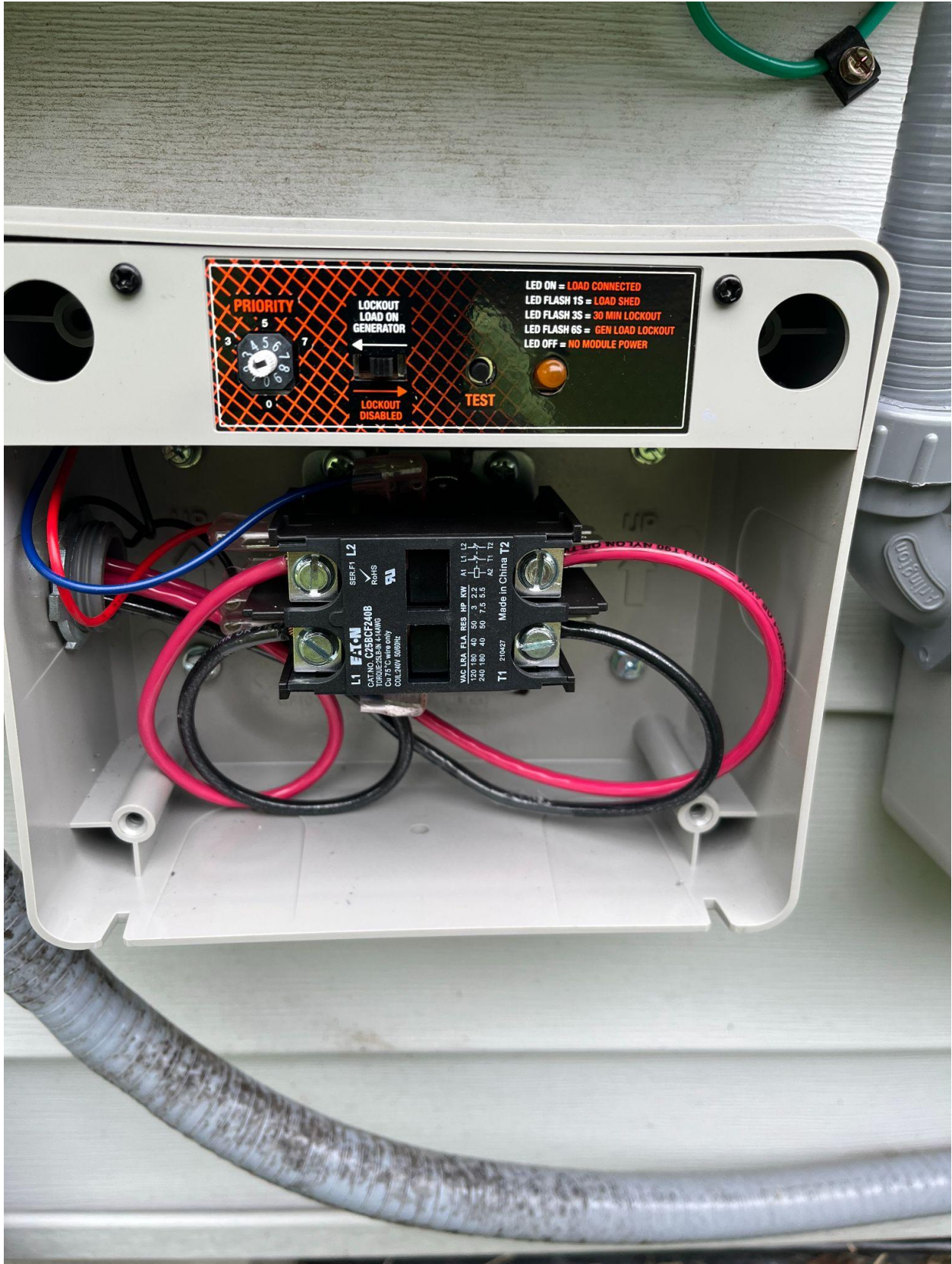














PV Link S2502 -06
Photovoltaics
making power
Power: 471w
PV Voltage: 250v
E-total: 2.1kWh


REbus


Inverter



Internet

PV Link SE502 -05
Photovoltaics
Working power
Power: 82W
PV Voltage: 25.6V
E-total: 2.0kWh


REbus


Inverter



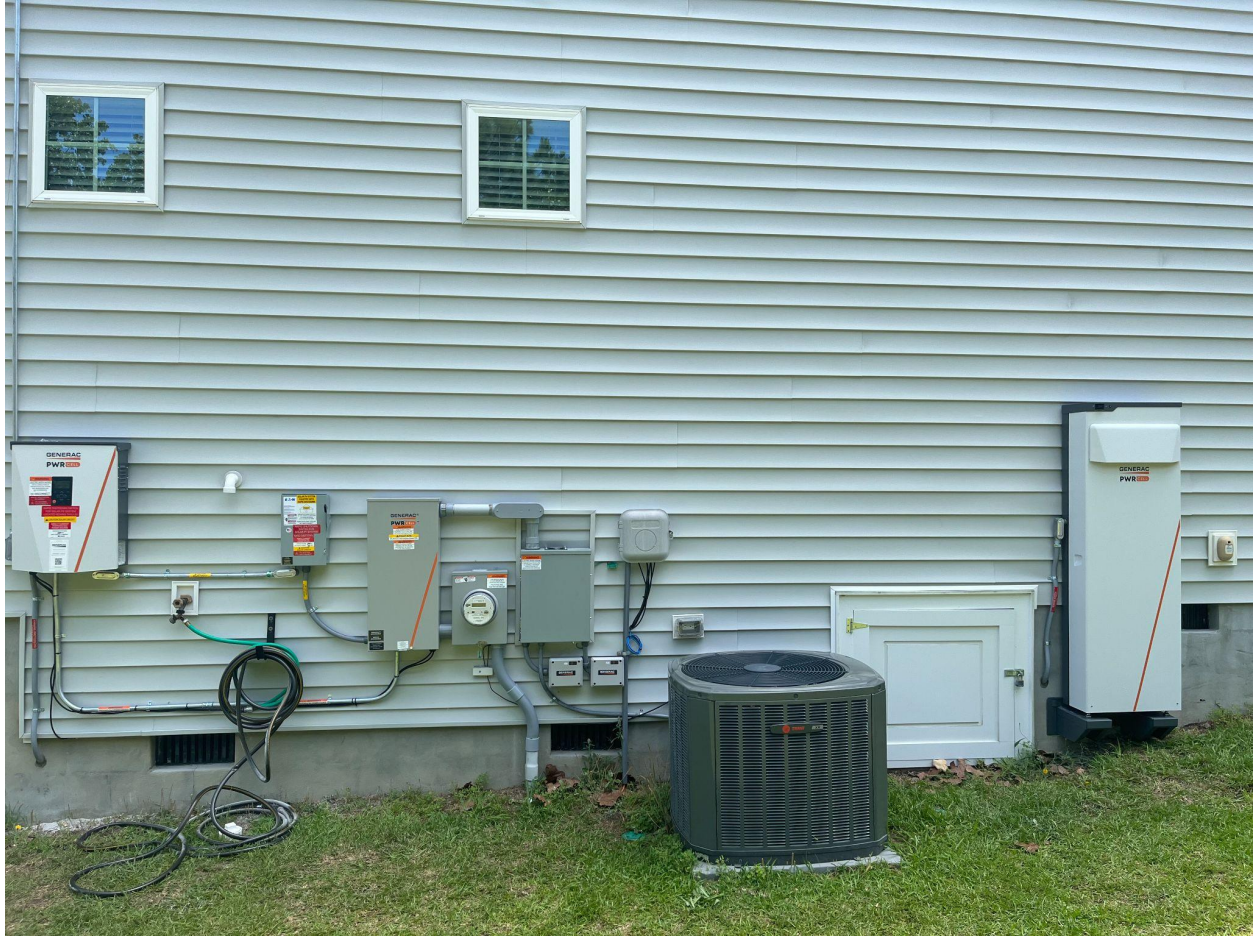
PV Link S2502 -04
Photovoltaics
making power
Power: 290W
PV Voltage: 287V
E-total: 19kWh

REbus

Inverter





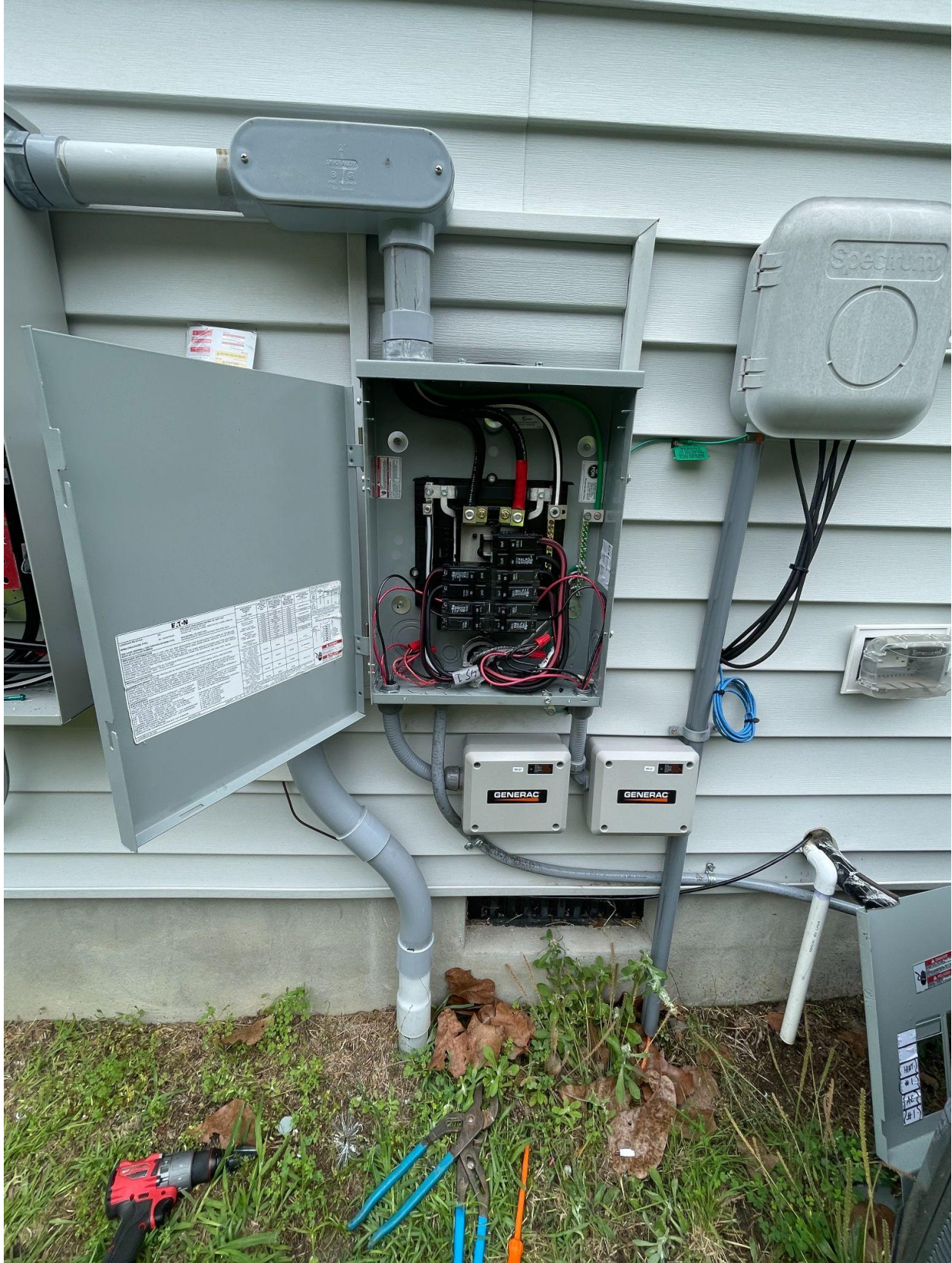


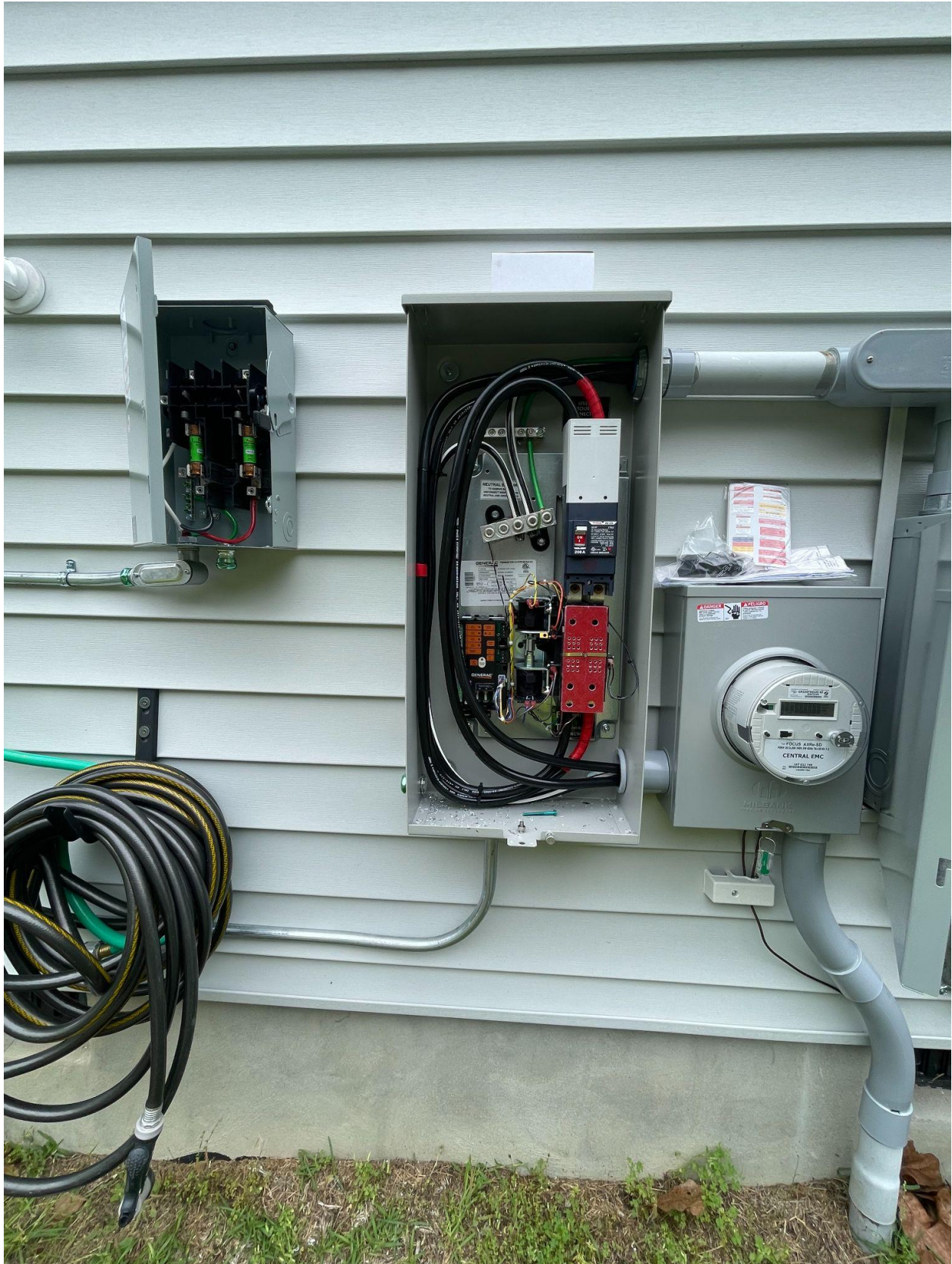






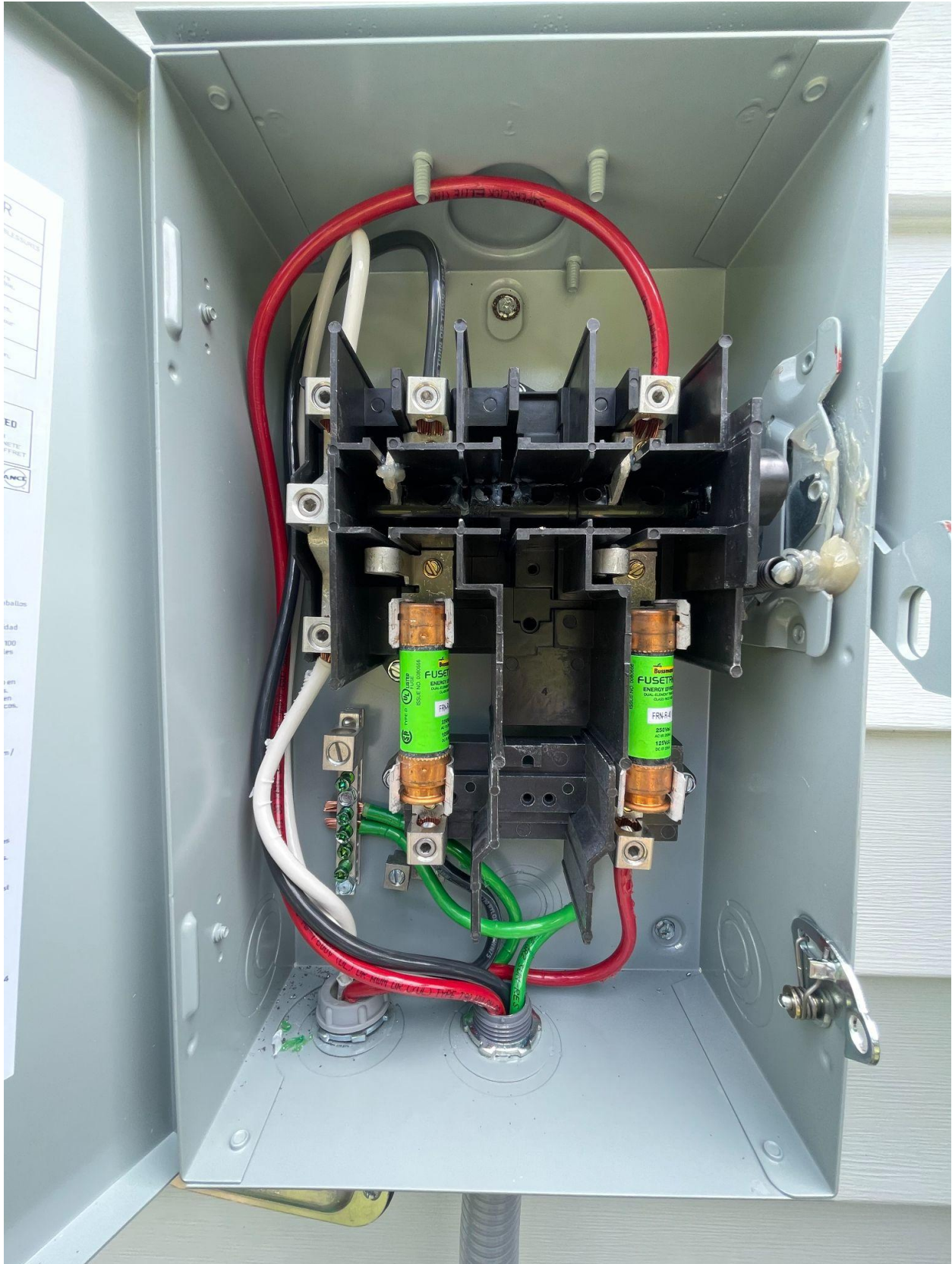


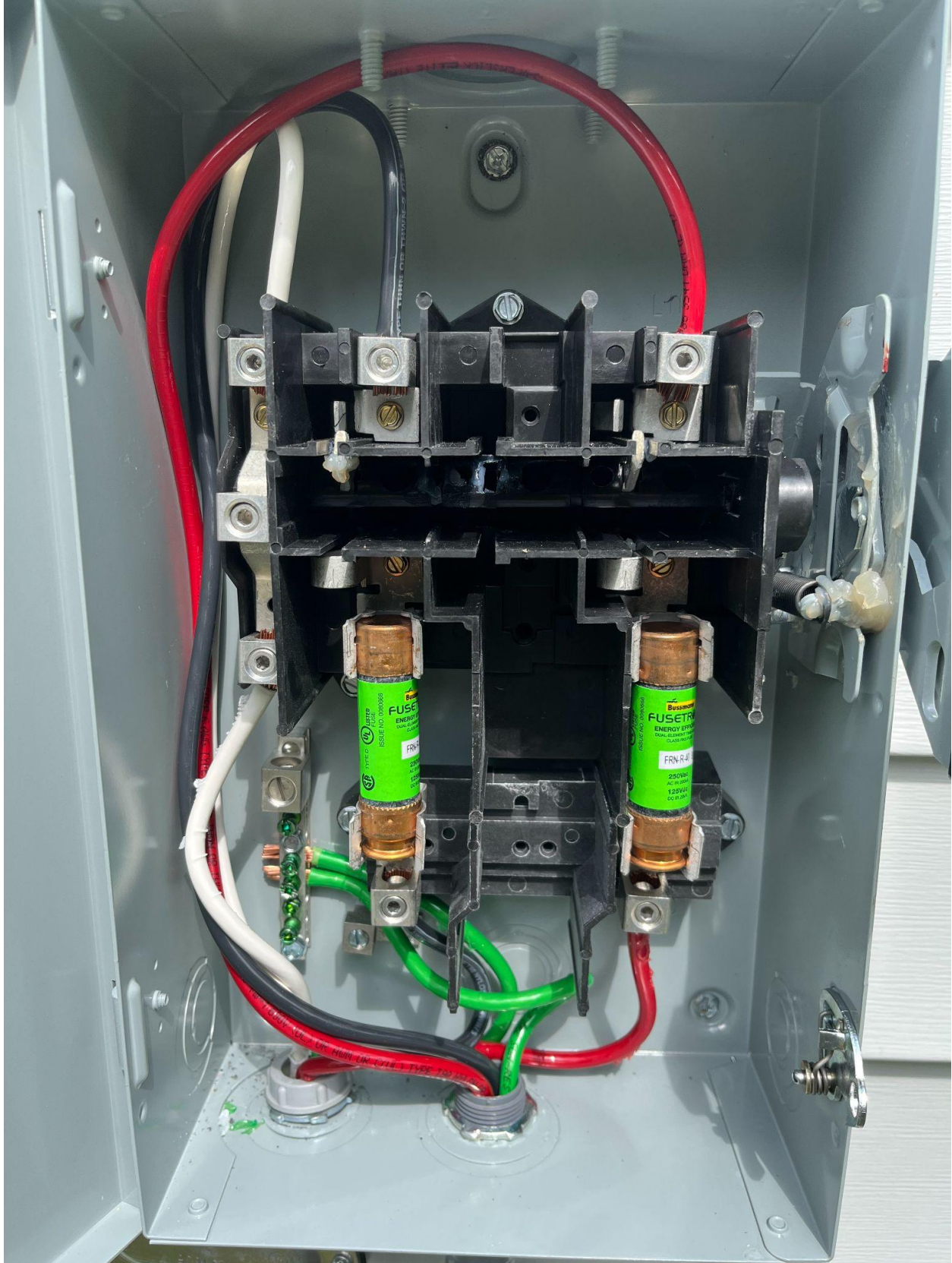




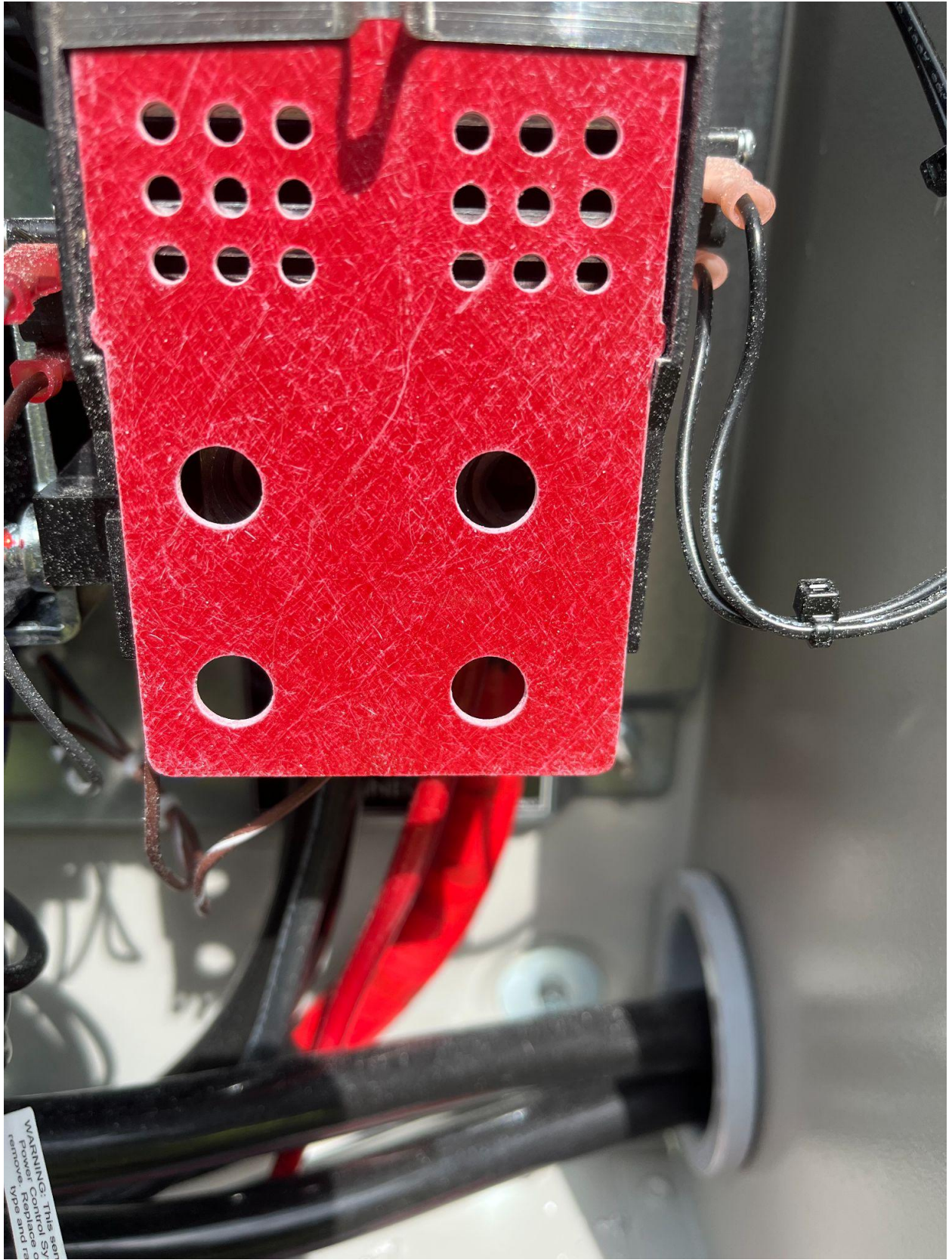




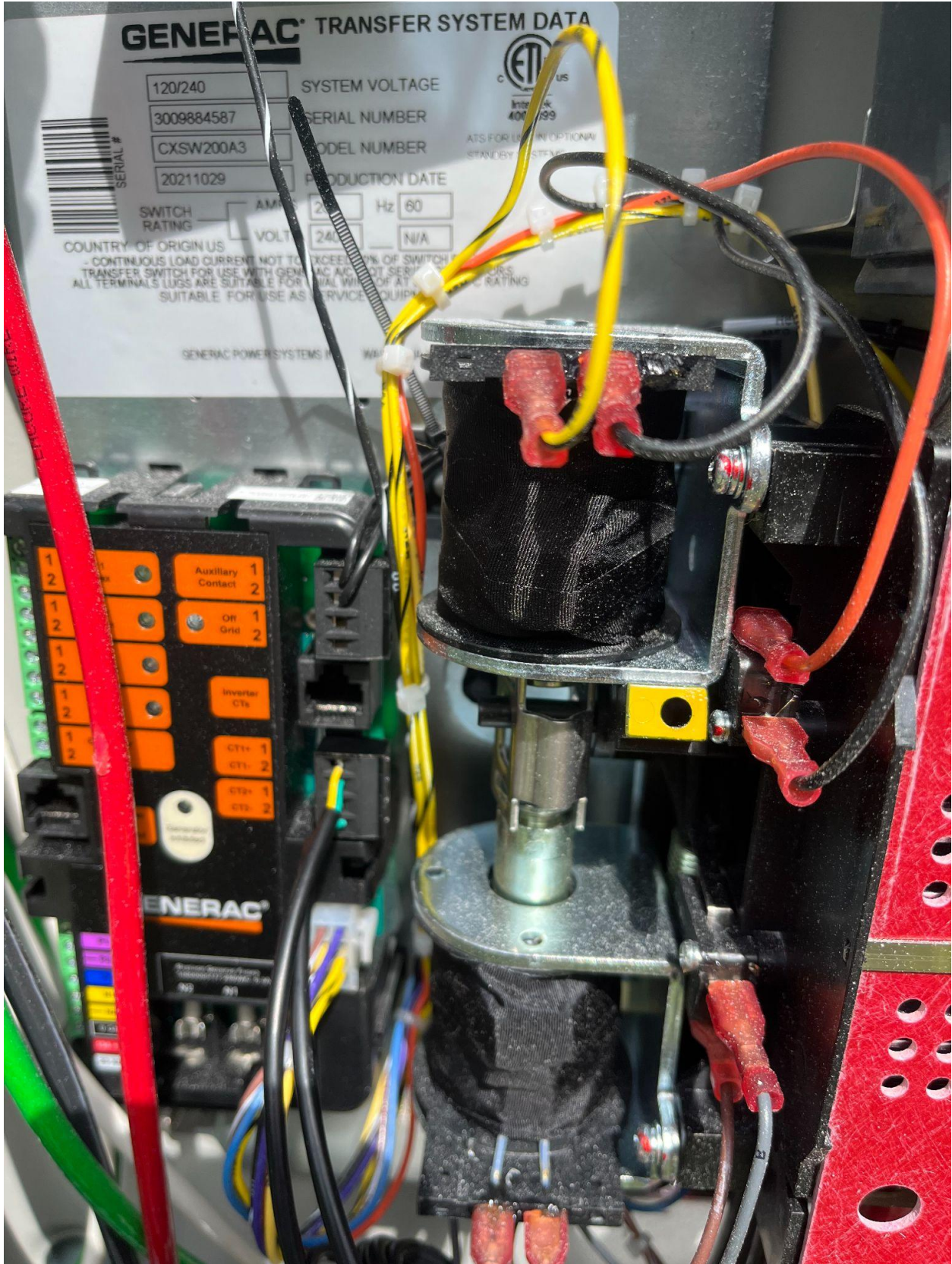


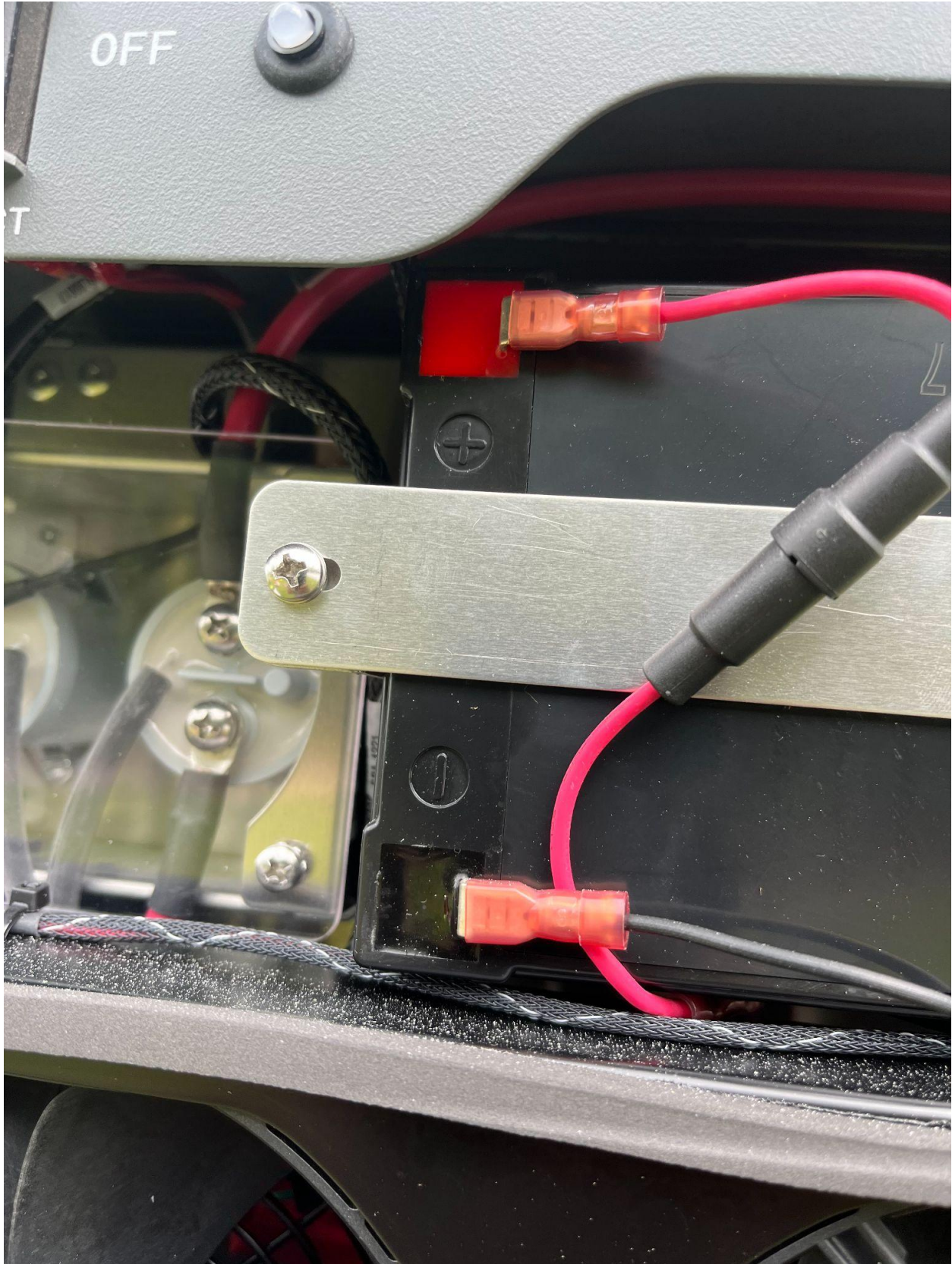


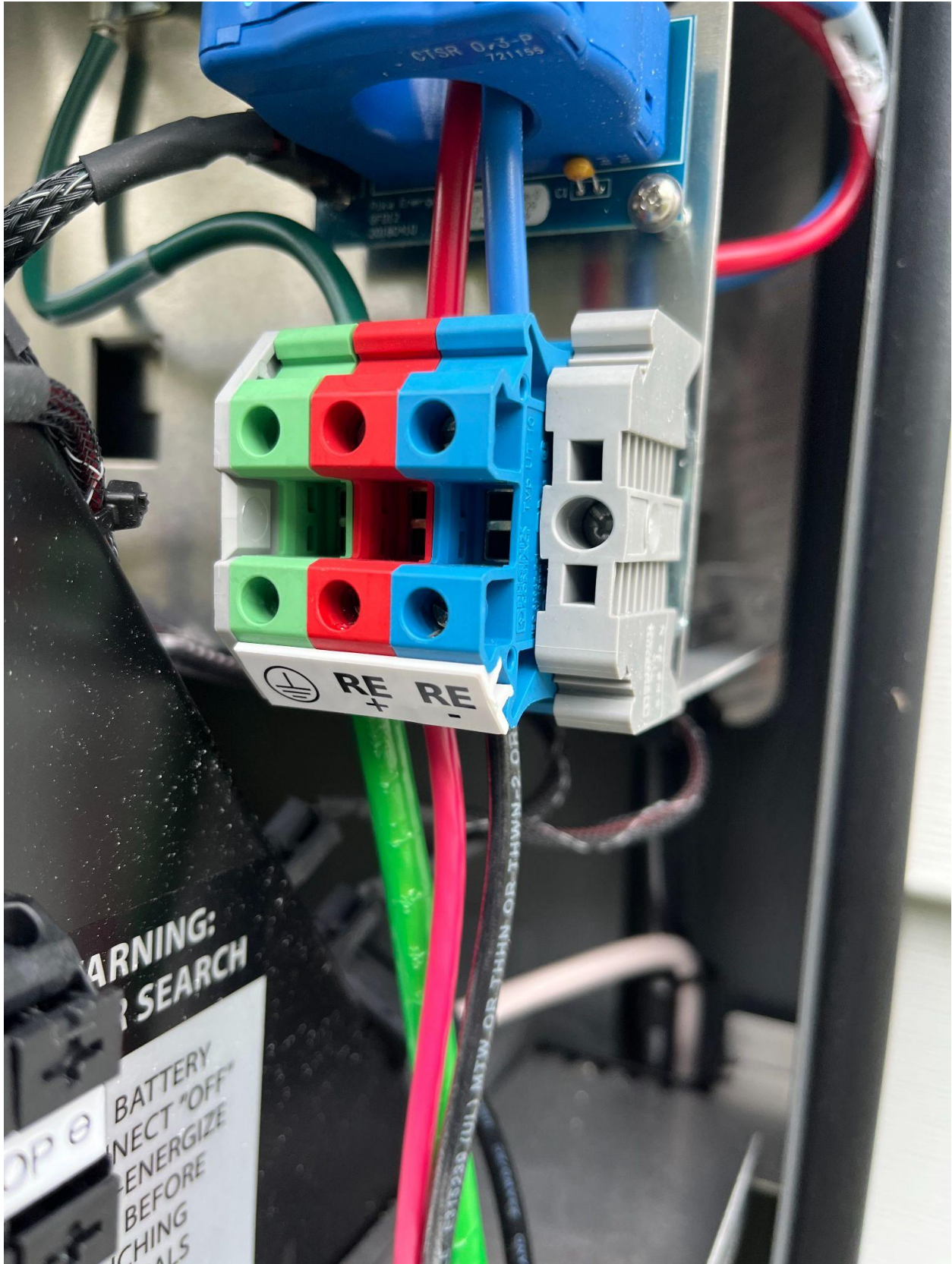




WARNING: This set
Power Control SY
replace o
remove Vps and 18















LP
BUILDING PRODUCTS

SHIELD
R
PRIOR TO INSTALLATION
ACCESS ALL INSTALLATIONS
VISIBLE ENDS. THIS SIDE IN
48-6893



