

7-XGF
ED
4/20/07/Rel.4

SOCKET

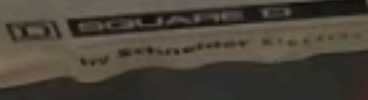
GROUNDING WIRE
THE GROUND
IN THE LINE
WITH NO GRO

CME WIRE AND

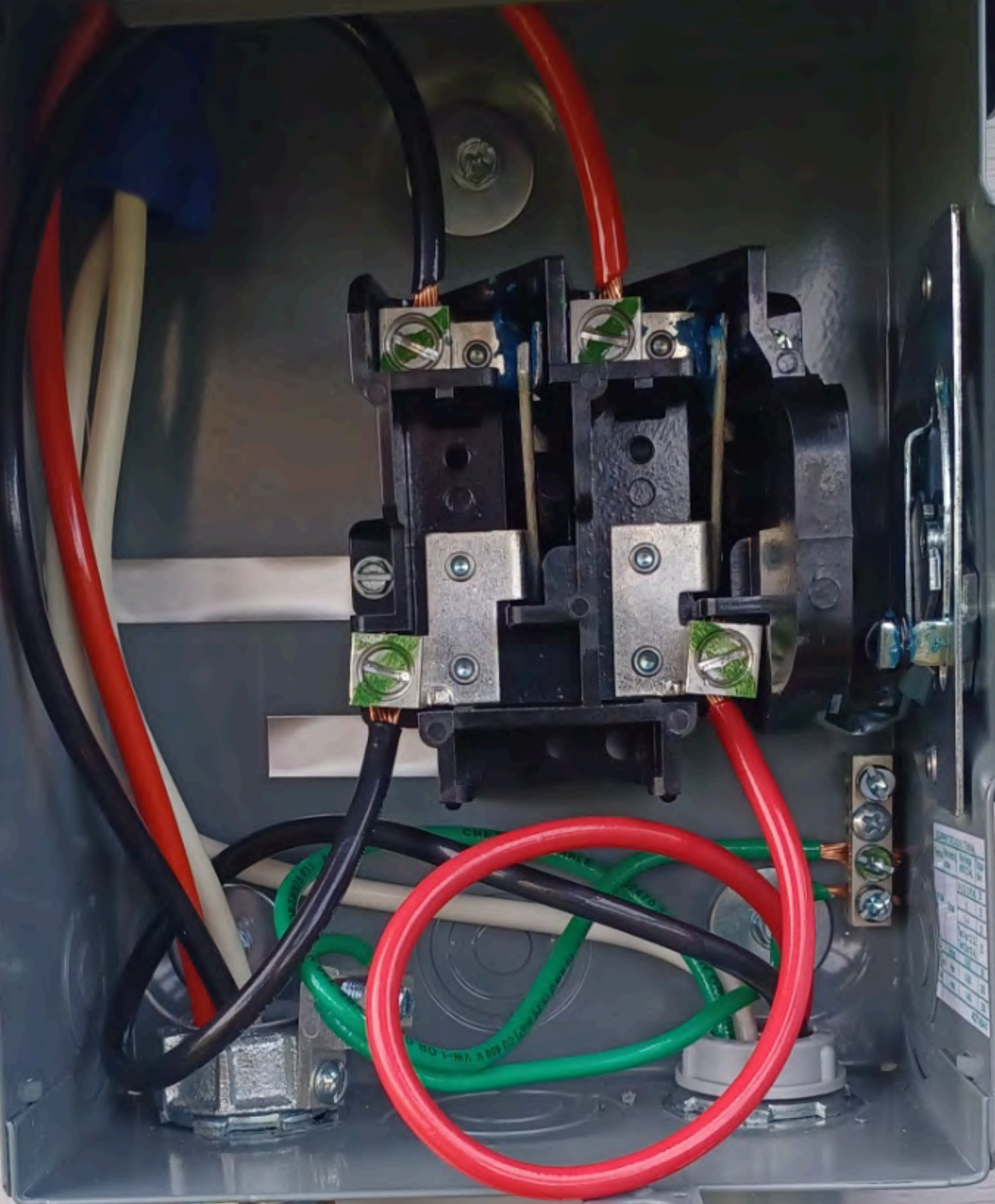
2217

Large suitable for 60°C and 75°C copper or aluminum conductors.

Zapatas adecuadas para conductores de cobre o de aluminio a una temperatura de 60°C y 75°C.

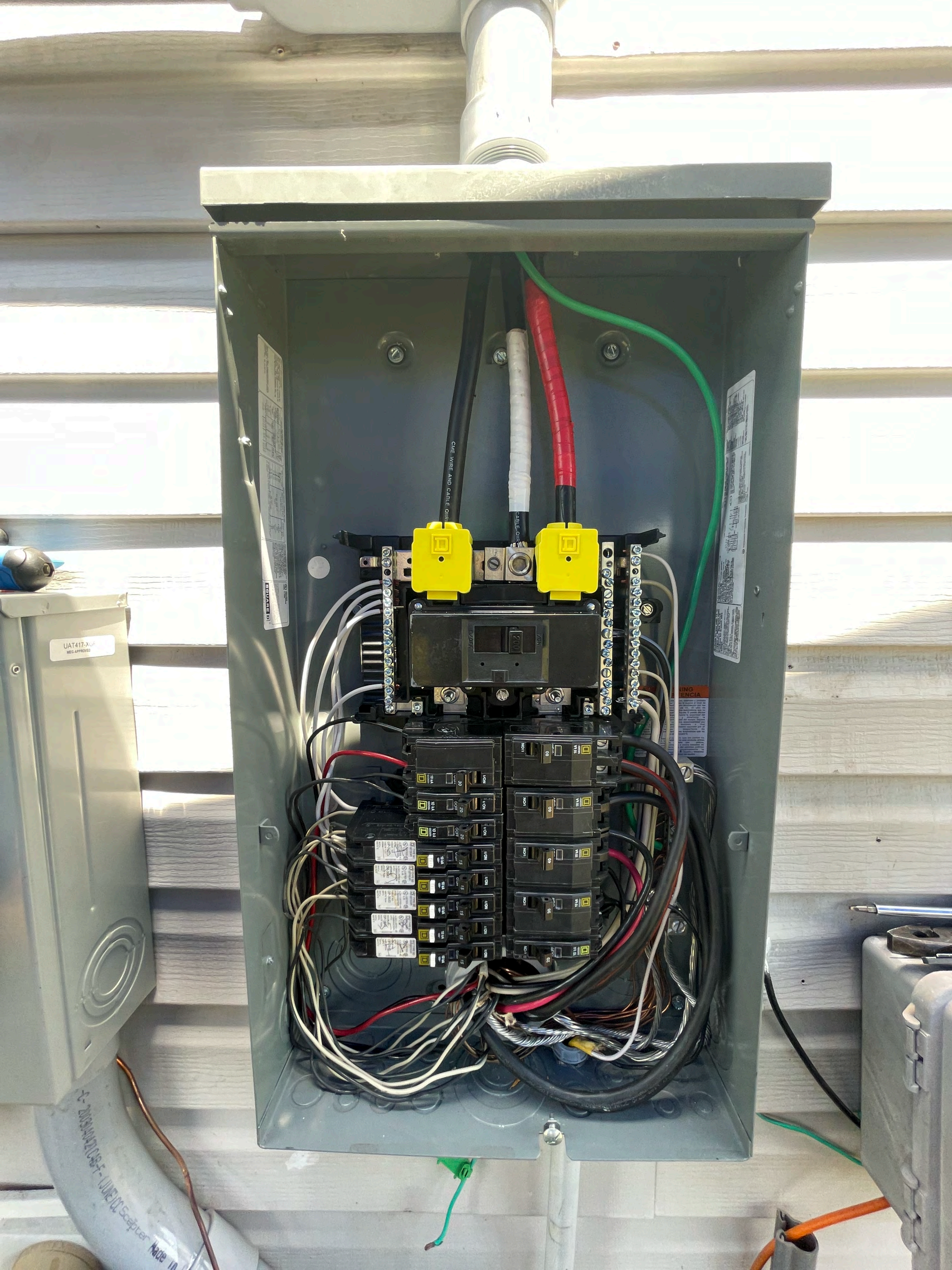


MADE IN MEXICO / HECHO EN MEXICO



TERMINAL	WIRE SIZE
1	14-12 AWG
2	14-12 AWG
3	14-12 AWG
4	14-12 AWG
5	14-12 AWG
6	14-12 AWG
7	14-12 AWG
8	14-12 AWG
9	14-12 AWG
10	14-12 AWG





WARNING

WARNING

WARNING

CME WIRE AND CABLE OHS

CABLE OHS

UAT417-XGP
MED APPROVED

2-2003-0042106-F-1102100 Escaper Made in

GENERAL DUTY SAFETY SWITCH
RETRIEVED FROM THE SERVICE GENERAL
DANGER / PELIGRO

PHOTOVOLTAIC SYSTEM
AC DISCONNECT

OPERATING VOLTAGE 240 VOLTS
OPERATING CURRENT 26.62 AMPS

RAPID SHUTDOWN SWITCH FOR SOLAR PV SYSTEM

ENPHASE
SOLAR PV SYSTEM EQUIPPED WITH RAPID SHUTDOWN

TURN RAPID SHUTDOWN SWITCH TO THE "OFF" POSITION TO SHUT DOWN PV SYSTEM AND REDUCE SHOCK HAZARD IN THE ARRAY

PHOTOVOLTAIC SYSTEM COMBINER PANEL
DO NOT ADD LOADS

THIS EQUIPMENT FED BY MULTIPLE SOURCES. TOTAL RATING OF ALL OVERCURRENT DEVICES, EXCLUDING MAIN SUPPLY OVERCURRENT DEVICE, SHALL NOT EXCEED CAPACITY OF BUSBAR.

ELECTRIC SHOCK HAZARD
DO NOT TOUCH TERMINALS
TERMINALS ON BOTH THE LINE AND LOAD SIDES MAY BE ENERGIZED IN THE OPEN POSITION



PHASE.
SYSTEM EQUIPPED
AND SHUTDOWN



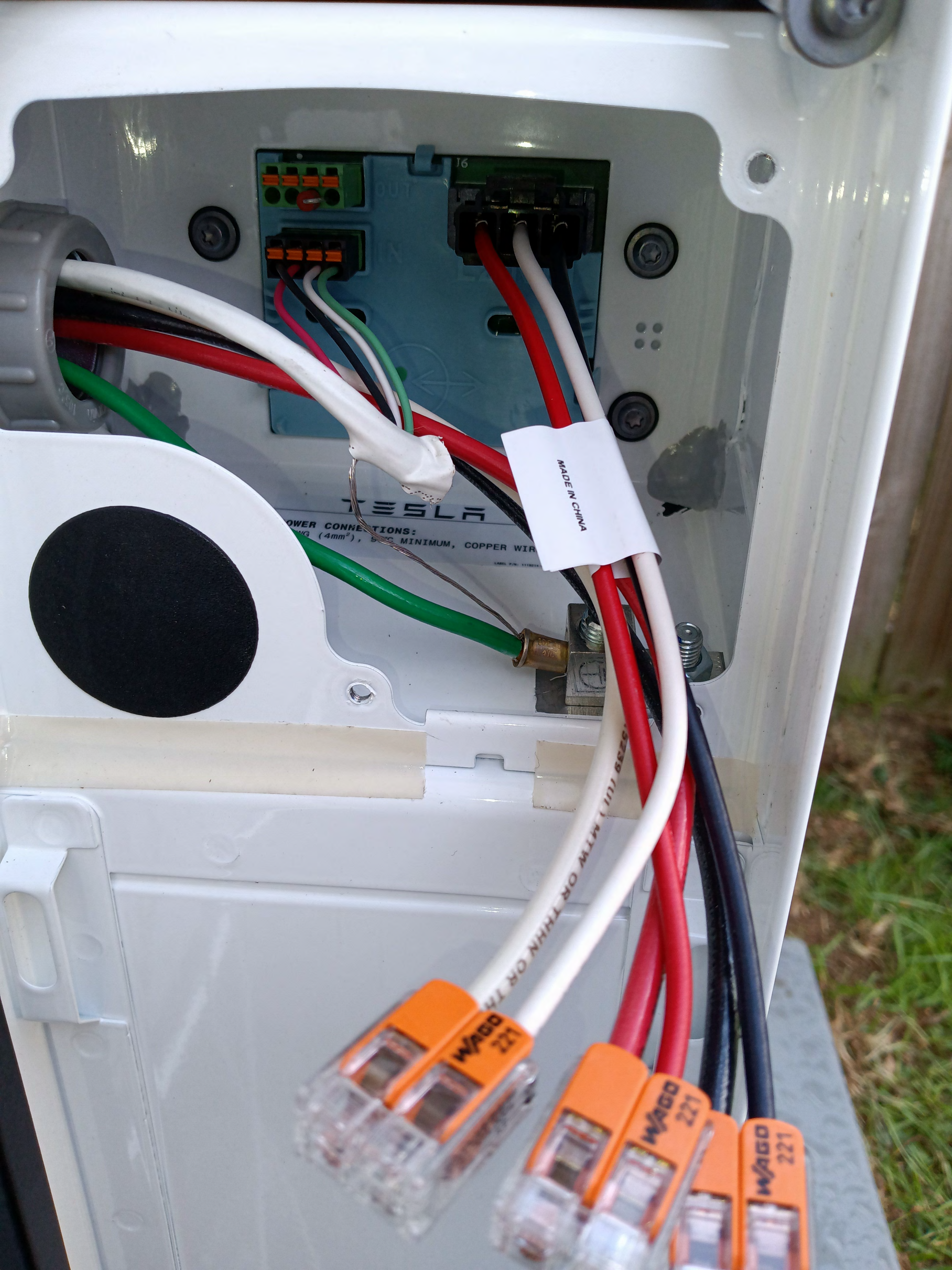
PV SYSTEM
DISCONNECT

WARNING
PHOTOVOLTAIC SYSTEM
COMBINER PANEL
DO NOT ADD LOADS

WARNING
THIS EQUIPMENT FED BY MULTIPLE
SOURCES. TOTAL RATING OF ALL
OVERCURRENT DEVICES, EXCLUDING
MAIN SUPPLY OVERCURRENT
DEVICE, SHALL NOT EXCEED
CAPACITY OF BUSBAR.

WARNING
ELECTRIC SHOCK HAZARD
DO NOT TOUCH TERMINALS
TERMINALS ON BOTH THE LINE AND
LOAD SIDES MAY BE ENERGIZED
IN THE OPEN POSITION





16

TESLA

POWER CONNECTIONS:
WIRING (4mm²), 5% MINIMUM, COPPER WIRE

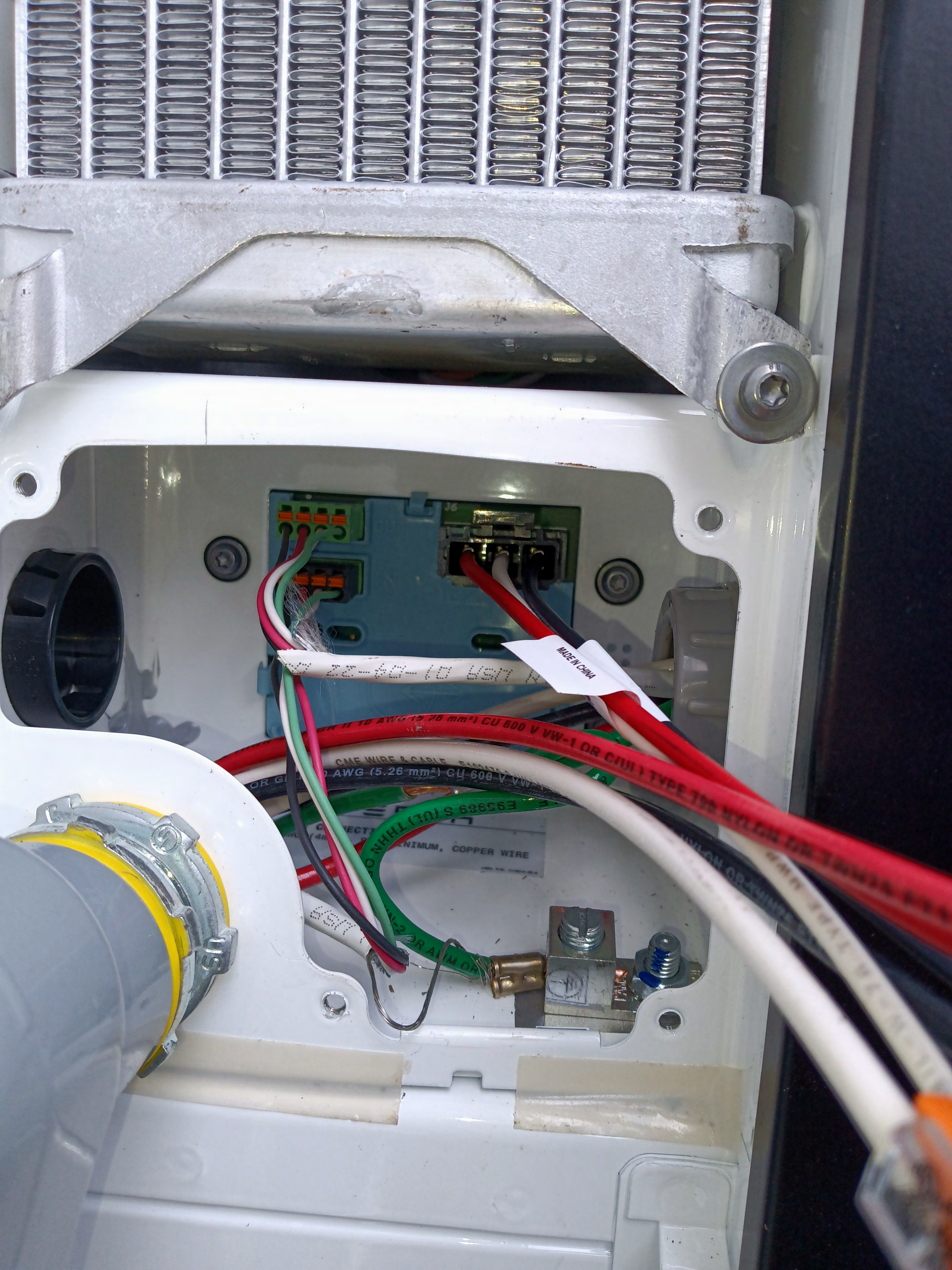
MADE IN CHINA

WAGO 227

WAGO 227

WAGO 227

3239 (UL) MTW OR THHN OR TH



Terminal block with multiple colored wires (red, green, black, white) connected to it. The wires are bundled together and secured with a white tape labeled "MADE IN CHINA".

MADE IN CHINA

157 01 04 10 USN

CME WIRE & CABLE
AWG (5.26 mm²) CU 600 V VW-1 OR CIVIL TYPE 105 W/CL OR 105 W/CL

E95989 S (UL) THHN

MINIMUM, COPPER WIRE

Terminal block with a metal screw terminal and a blue screw. A green wire is connected to the terminal.

Yellow and grey electrical components, possibly a fuse or a terminal block, mounted on the white panel.

**TESLA AC POWERWALL
GRID SUPPORT UTILITY-INTERCONNECTED**



ASY AC POWERWALL 2.1.5KW, 13.5kWh
TPN: 3012170-10-C
TSN: TG12205000195X

Conforms to UL STD 1741,
UL STD 1979, UL STD
9540, IEC 62109-1, IEC
62109-2, IEC 62040.
Certified to CAN/CSA STD
C22.2 No. 107.1



Protective Class	Class I
Enclosure Type (UL 1741)	Type 3R
Ingress Protection Battery & Power Electronics/Wiring	IP 67 / IP 56
Operating Temperature Range	-20°C to +50°C
Derated Temperature Range	+43°C to +50°C
Inverter Topology	Isolated
Battery Energy	13.5 kWh
Battery Type	Li-Ion
Weight	125 kg

AC Input/Output

Nominal Voltage (A.C. V)	100/ 120/ 200/ 208/ 220/ 230/ 240
Voltage Range & Maximum Continuous Current	90-110 V AC; 25 A 114-126 V AC; 24 A 180-220 V AC; 25 A 198-242 V AC; 24 A 207-259 V AC; 25 A 228-252 V AC; 24 A
Frequency Range/Nominal(Hz)	50-60; 50/60
Maximum Continuous Power (kVA)	100 V AC; 2.5 kVA 120 V AC; 2.9 kVA (USA) 200 V AC; 5 kVA 208 V AC; 5 kVA (USA) 220 V AC; 5.5 kVA 230 V AC; 5.5 kVA 240 V AC; 5.8 kVA (USA)
Power Factor Range	-0.85 to +0.85
Maximum Output Fault Current	32 A AC
Phase	200V/ 208V/ 240V; 2W 1N +PE; 2Ø; All Other Voltages; 1W 1N +PE; 1Ø
Max Supply Fault Current (Icw)	10 kA AC



BEFORE WORKING ON THIS CIRCUIT
- SWITCH ON SIDE SHOULD BE TURNED OFF BEFORE SERVICING EQUIPMENT
- ISOLATE UNINTERRUPTIBLE POWER SYSTEM (UPS)
- THEN CHECK FOR HAZARDOUS VOLTAGE BETWEEN ALL TERMINALS INCLUDING THE PROTECTIVE EARTH

AVANT TOUTE OPÉRATION SUR CE CIRCUIT
- OUVRIRE L'INTERRUPTEUR SUR LE PANNÉAU LATÉRAL AVANT D'EFFECTUER LA MAINTENANCE DE L'ÉQUIPEMENT
- ISOLER LE SYSTÈME D'ALIMENTATION SANS COUPEURE (ASG)
- VÉRIFIER QU'IL N'EXISTE AUCUNE TENSION DANGÉREUSE ENTRE TOUS LES TERMINAUX INCLUANT LES TERMINAUX DE MISE À LA TERRE

WARNING:
RISK OF ELECTRIC SHOCK. ENERGY STORED IN CAPACITOR. DO NOT REMOVE WIRING COVER UNTIL 5 MINUTES AFTER DISCONNECTING THE EQUIPMENT. HAZARDOUS LIVE PARTS INSIDE THIS POWER SUPPLY ARE ENERGIZED FROM THE BATTERY SUPPLY EVEN WHEN THE INPUT AC POWER IS DISCONNECTED. REFER SERVICING TO QUALIFIED SERVICE PERSONNEL. DO NOT ISOLATE FROM AC OUTPUT.

AVERTISSEMENT:
RISQUE DE CHOC ÉLECTRIQUE. ÉNERGIE STOCKÉE DANS UN CONDENSATEUR. NE PAS RETIRER LA PROTECTION À MOINS DE 5 MINUTES APRÈS DÉCONNEXION DE L'ÉQUIPEMENT. CE BLOC D'ALIMENTATION COMPORTE DES PIÈCES DANGÉREUSES, SOUS TENSION, ALIMENTÉES PAR LES BATTERIES MÊME LORSQUE LE BLOC EST HORS TENSION. L'ENTRETIEN DE CET ÉQUIPEMENT NE PEUT ÊTRE RÉALISÉ QUE PAR UN PERSONNEL QUALIFIÉ. ENTRÉE C.G.

TESLA
Made in the USA

Tesla Motors, Inc.
Electra Ave., Sparks, NV 89434
Tel: 1(877)798-3762
www.teslaenergy.com

GRID SUP



ASY
TPN
TSN



Protective Class	Class I
Enclosure Type (UL 1741)	Type 3R
Ingress Protection Battery & Power Electronics/Wiring	IP 67 / IP 56
Operating Temperature Range	-20°C to +50°C
Derated Temperature Range	+43°C to +50°C
Inverter Topology	Isolated
Battery Energy	13.5 kWh
Battery Type	Li-Ion
Weight	125 kg

AC Input/Output

Nominal Voltage (A.C. V)	100/ 120/ 200/ 208/ 220/ 230/ 240
Voltage Range & Maximum Continuous Current	90-110 V AC; 25 A 114-126 V AC; 24 A 180-220 V AC; 25 A 198-242 V AC; 24 A 207-259 V AC; 25 A 228-252 V AC; 24 A
Frequency Range/Nominal(Hz)	50-60; 50/60
Maximum Continuous Power (kVA)	100 V AC; 2.5 kVA 120 V AC; 2.9 kVA (USA) 200 V AC; 5 kVA 208 V AC; 5 kVA (USA) 220 V AC; 5.5 kVA 230 V AC; 5.5 kVA 240 V AC; 5.8 kVA (USA)
Power Factor Range	-0.85 to +0.85
Maximum Output Fault Current	32 A AC
Phase	200V/ 208V/ 240V; 2W 1N +PE; 2Ø; All Other Voltages; 1W 1N +PE; 1Ø
Max Supply Fault Current (Icw)	10 kA AC



BEFORE WORKING ON THIS CIRCUIT
- SWITCH ON SIDE SHOULD BE TURNED OFF BEFORE SERVICING EQUIPMENT
- ISOLATE UNINTERRUPTIBLE POWER SYSTEM (UPS)
- THEN CHECK FOR HAZARDOUS VOLTAGE BETWEEN ALL TERMINALS INCLUDING THE PROTECTIVE EARTH

AVANT TOUTE OPÉRATION SUR CE CIRCUIT
- OUVRIRE L'INTERRUPTEUR SUR LE PANNÉAU LATÉRAL AVANT D'EFFECTUER LA MAINTENANCE DE L'ÉQUIPEMENT
- ISOLER LE SYSTÈME D'ALIMENTATION SANS COUPEURE (ASG)
- VÉRIFIER QU'IL N'EXISTE AUCUNE TENSION DANGÉREUSE ENTRE TOUS LES TERMINAUX INCLUANT LES TERMINAUX DE MISE À LA TERRE

WARNING:
RISK OF ELECTRIC SHOCK. ENERGY STORED IN CAPACITOR. DO NOT REMOVE WIRING COVER UNTIL 5 MINUTES AFTER DISCONNECTING THE EQUIPMENT. HAZARDOUS LIVE PARTS INSIDE THIS POWER SUPPLY ARE ENERGIZED FROM THE BATTERY SUPPLY EVEN WHEN THE INPUT AC POWER IS DISCONNECTED. REFER SERVICING TO QUALIFIED SERVICE PERSONNEL. DO NOT ISOLATE FROM AC OUTPUT.

AVERTISSEMENT:
RISQUE DE CHOC ÉLECTRIQUE. ÉNERGIE STOCKÉE DANS UN CONDENSATEUR. NE PAS RETIRER LA PROTECTION À MOINS DE 5 MINUTES APRÈS DÉCONNEXION DE L'ÉQUIPEMENT. CE BLOC D'ALIMENTATION COMPORTE DES PIÈCES DANGÉREUSES, SOUS TENSION, ALIMENTÉES PAR LES BATTERIES MÊME LORSQUE LE BLOC EST HORS TENSION. L'ENTRETIEN DE CET ÉQUIPEMENT NE PEUT ÊTRE RÉALISÉ QUE PAR UN PERSONNEL QUALIFIÉ. ENTRÉE C.G.

TESLA
Made in the USA

Tesla Motors, Inc.
Electra Ave., Sparks, NV 89434
Tel: 1(877)798-3762
www.teslaenergy.com