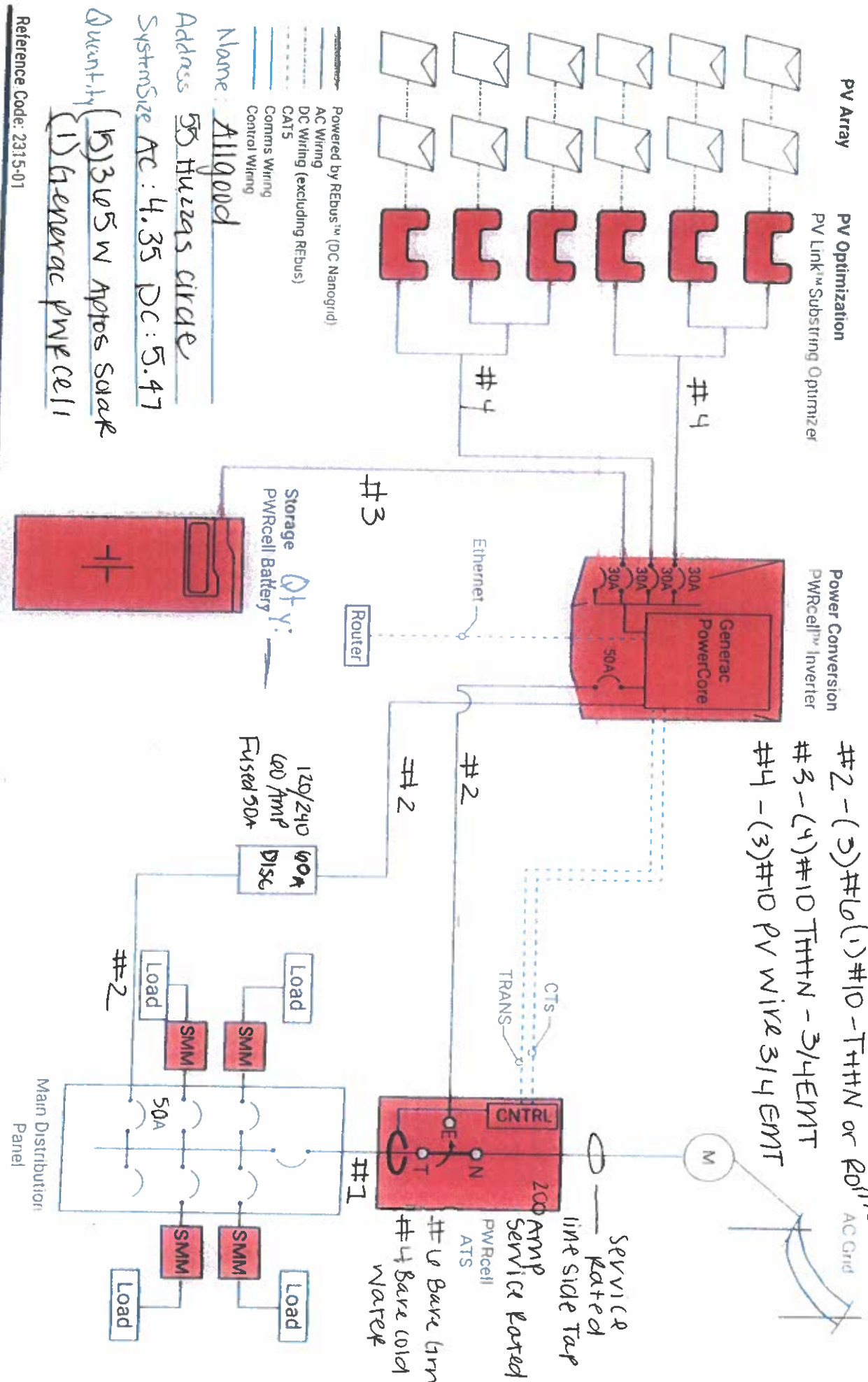


#1 - 4/0 SER cable
 #2 - (3) #10 THHN or Romex
 #3 - (4) #10 THHN - 3/4 EMT
 #4 - (3) #10 PV Wire 3/4 EMT



Powered by REBUS™ (DC Nanogrid)
 AC Wiring
 DC Wiring (excluding REBUS)
 CAT5
 Comms Wiring
 Control Wiring

Name: Allgood
 Address: 55 Huizers circle
 System Size AC: 4.35 DC: 5.47
 Quantity: (15) 3005W Aptos Solar
(1) Generac PWRcell

Reference Code: 2315-01

This design shows a Generac PWRcell system with a PWRcell ATS in a whole home backup configuration. Use this system configuration to provide backup power to the main service panel loads using Generac Smart Management Modules (SMMs) for load shedding in accordance with NEC 702.4(B) and Article 220.

This configuration is acceptable with 200A or larger utility services.

Whole Home Backup / Solar + Storage

- 1 PWRcell Inverter
- 6 PV Links
- 1 PWRcell Battery
- 1 CT Kit (incl)
- 1 PWRcell ATS
- Generac SMMs

