



Do Not Remove
217971C4-CF
ETL
Intertek
4004590

FC

CAUTION

HOT SURFACES-TO REDUCE THE RISK OF BURNS-DO NOT TOUCH.
RISK OF ELECTRIC SHOCK-WHEN THE PHOTOVOLTAIC ARRAY IS EXPOSED TO LIGHT, IT SUPPLIES A DC VOLTAGE TO EQUIPMENT. COVER PV MODULE WITH OPAQUE MATERIAL BEFORE CONNECTING OR DISCONNECTING THIS OPTIMIZER.
DURING FAULT, ZERO CURRENT IS SOURCED INTO DC ARRAY BY CONVERTER.

WARNING ELECTRIC SHOCK HAZARD. THE DC CONDUCTORS OF THIS PHOTOVOLTAIC SYSTEM ARE UNGROUNDED AND MAY BE ENERGIZED.

AVERTISSEMENT

RISQUE DE CHOC ELECTRIQUE: QUAND LE CHAMP PHOTOVOTAIQUE EST EXPOSE A LA LUMIERE, UNE TENSION CC EST FOURNIE A CET EQUIPEMENT.
SURFACES CHAUDES: NE PAS TOUCHER, AFIN DE REDUIRE LES RISQUES DE BRULURES LE COURANT DE RETOUR INJECTE PAR LE CONVERTISSEUR EN CAS DE DEFAILLANCE DANS LE MODULE PV EST TOUJOURS NUL.



(UL) E508528

VW-1 DCM-GMEF



ETL
Intertek
4004590

CAUTION
TO REDUCE THE RISK OF
ELECTRIC SHOCK, DO NOT TOUCH
THE PV ARRAY IS EXPOSED TO
A DC VOLTAGE TO
PV MODULE WITH
BEFORE CONNECTING OR DISCONNECTING THIS OPTIMIZER
FAULT, ZERO CURRENT IS SOURCED INTO DC ARRAY BY CONVERTER

WARNING THIS DEVICE SHOULD BE USED IN ACCORDANCE WITH THE INSTRUCTIONS PROVIDED IN THE USER MANUAL

AVERTISSEMENT



CAUTION
HOT SURFACES-TO REDUCE
BURNS-DO NOT TOUCH.
RISK OF ELECTRIC SHOCK-
PHOTOVOLTAIC ARRAY IS
LIGHT, IT SUPPLIES A DC
EQUIPMENT. COVER PV
OPAQUE MATERIAL BE
DURING FAULT, ZERO

WAR
SYSTEM



AVERTISSEMENT CHAMP
MAGNETIQUE
NE PAS TOUCHER LE COURANT
INVERTI PAR LE MODULE PV EST
TOUJOURS NUL.

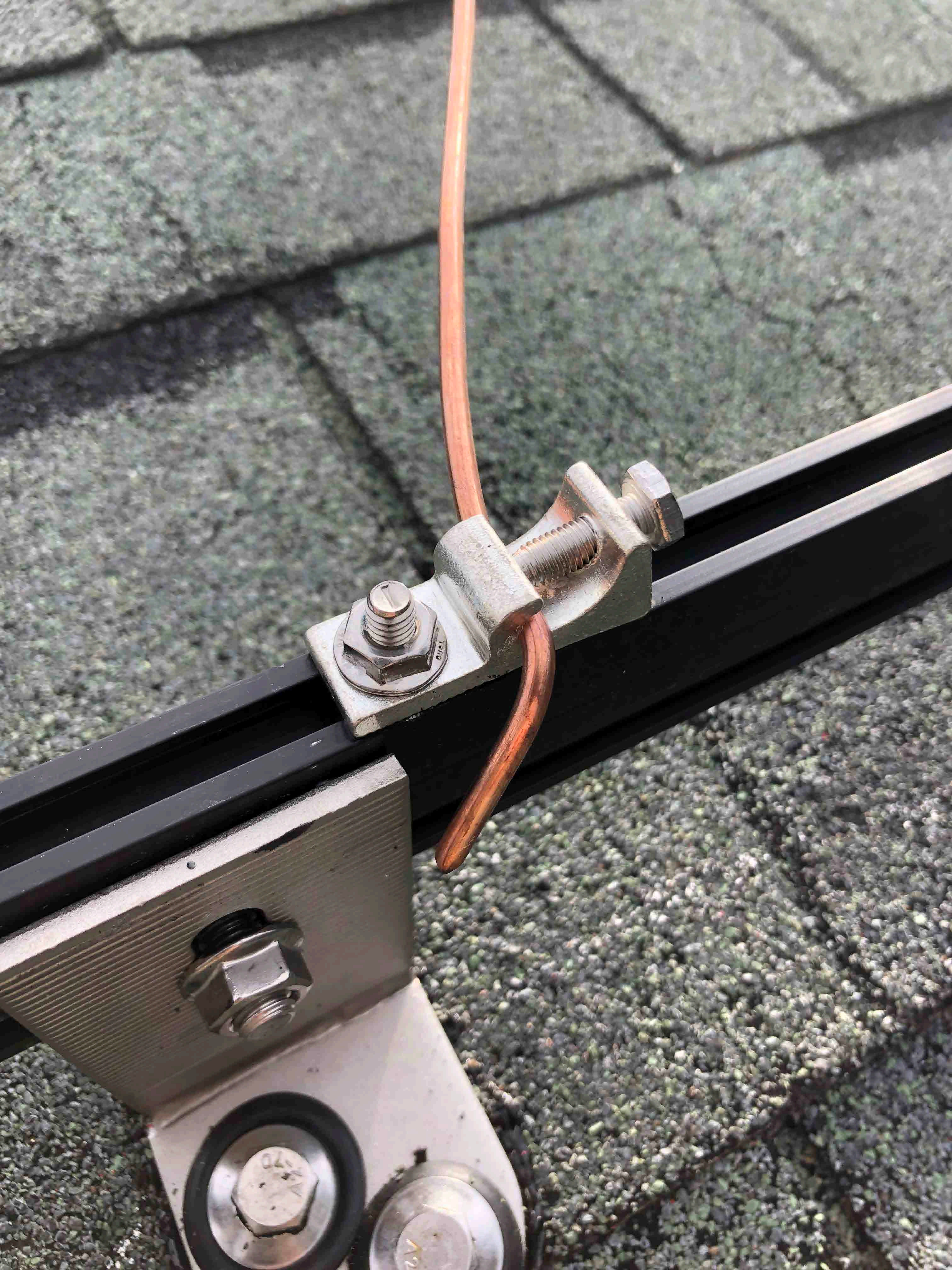
SolarEdge | Inco

DC Output: 40W/5.60V/1.5A
DC Input: 8-60V/11.75A
Open Circuit Voltage: 1V
NA32 SV4421A-0217991CC-F7
DE IV: Vietnam P401-5NM4MRM



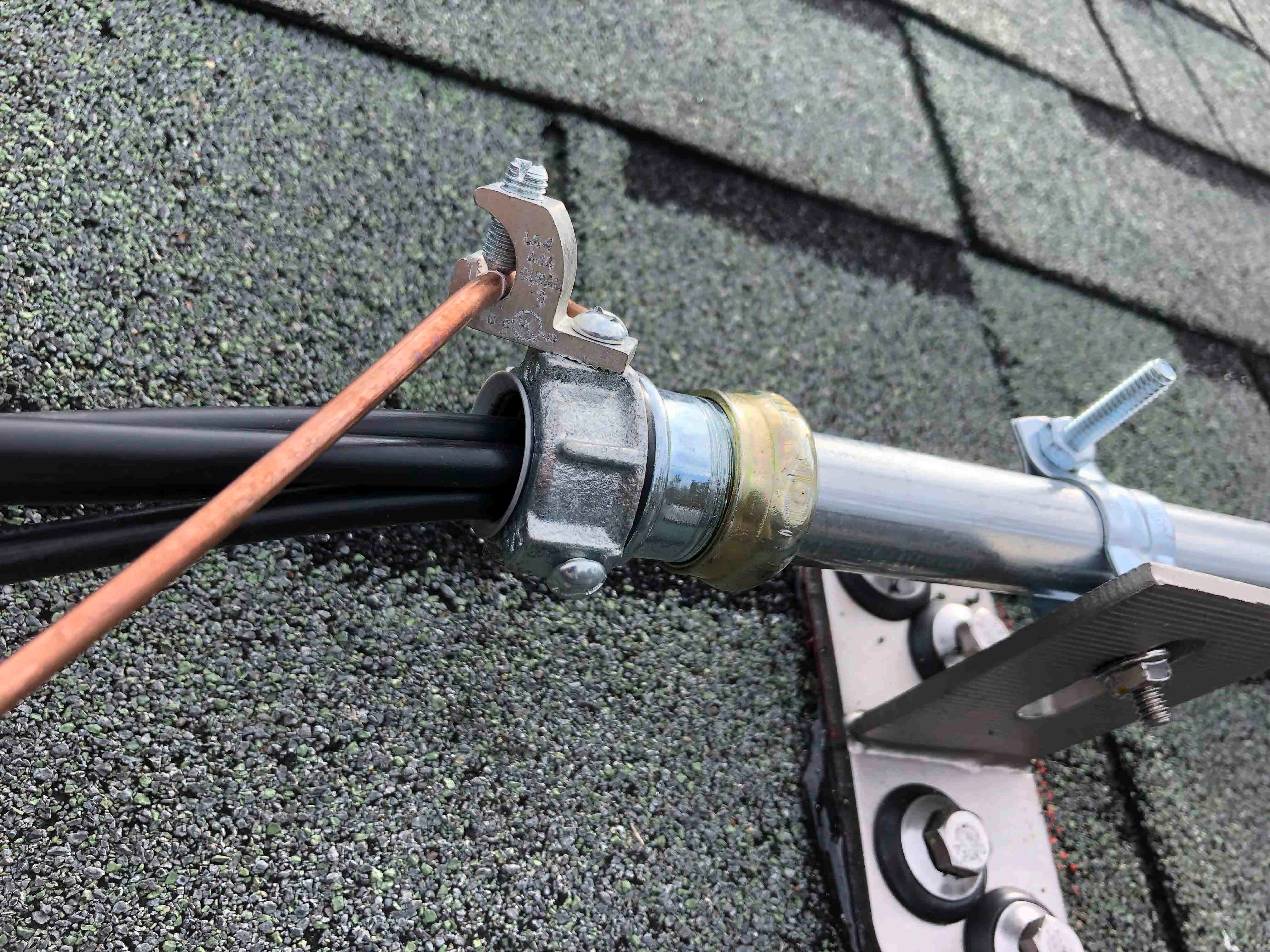
















WARNING PHOTOVOLTAIC POWER SOURCE















PHOTOVOLTAIC
ER SOURCE









3 4 5 6 7 8 9 10 11 12 13 14 15 16 17

ON THE EXTERIOR OF A BUILDING, THIS
CABLE TRAY SHALL BE INSTALLED IN
CONFORMANCE WITH THE FOLLOWING
REQUIREMENTS:
1. THE CABLE TRAY SHALL BE
INSTALLED IN A LOCATION THAT
IS PROTECTED FROM PHYSICAL
DAMAGE AND WEATHER.
2. THE CABLE TRAY SHALL BE
INSTALLED IN A LOCATION THAT
IS PROTECTED FROM OVERHEATING.
3. THE CABLE TRAY SHALL BE
INSTALLED IN A LOCATION THAT
IS PROTECTED FROM CORROSION.
4. THE CABLE TRAY SHALL BE
INSTALLED IN A LOCATION THAT
IS PROTECTED FROM VIBRATION.
5. THE CABLE TRAY SHALL BE
INSTALLED IN A LOCATION THAT
IS PROTECTED FROM MOISTURE.
6. THE CABLE TRAY SHALL BE
INSTALLED IN A LOCATION THAT
IS PROTECTED FROM UV RADIATION.
7. THE CABLE TRAY SHALL BE
INSTALLED IN A LOCATION THAT
IS PROTECTED FROM AIR POLLUTION.
8. THE CABLE TRAY SHALL BE
INSTALLED IN A LOCATION THAT
IS PROTECTED FROM OZONE.
9. THE CABLE TRAY SHALL BE
INSTALLED IN A LOCATION THAT
IS PROTECTED FROM ACID RAIN.
10. THE CABLE TRAY SHALL BE
INSTALLED IN A LOCATION THAT
IS PROTECTED FROM SALINE CRYSTALS.
11. THE CABLE TRAY SHALL BE
INSTALLED IN A LOCATION THAT
IS PROTECTED FROM ICE AND SNOW.
12. THE CABLE TRAY SHALL BE
INSTALLED IN A LOCATION THAT
IS PROTECTED FROM HAIL.
13. THE CABLE TRAY SHALL BE
INSTALLED IN A LOCATION THAT
IS PROTECTED FROM WIND.
14. THE CABLE TRAY SHALL BE
INSTALLED IN A LOCATION THAT
IS PROTECTED FROM LIGHTNING.
15. THE CABLE TRAY SHALL BE
INSTALLED IN A LOCATION THAT
IS PROTECTED FROM EARTHQUAKES.
16. THE CABLE TRAY SHALL BE
INSTALLED IN A LOCATION THAT
IS PROTECTED FROM TORNADOES.
17. THE CABLE TRAY SHALL BE
INSTALLED IN A LOCATION THAT
IS PROTECTED FROM OTHER
NATURAL DISASTERS.
18. THE CABLE TRAY SHALL BE
INSTALLED IN A LOCATION THAT
IS PROTECTED FROM OTHER
UNFORESEEN CIRCUMSTANCES.
19. THE CABLE TRAY SHALL BE
INSTALLED IN A LOCATION THAT
IS PROTECTED FROM OTHER
UNFORESEEN CIRCUMSTANCES.
20. THE CABLE TRAY SHALL BE
INSTALLED IN A LOCATION THAT
IS PROTECTED FROM OTHER
UNFORESEEN CIRCUMSTANCES.







ENGINEERED, DESIGNED AND QUALITY TESTED BY Q CELLS IN GERMANY

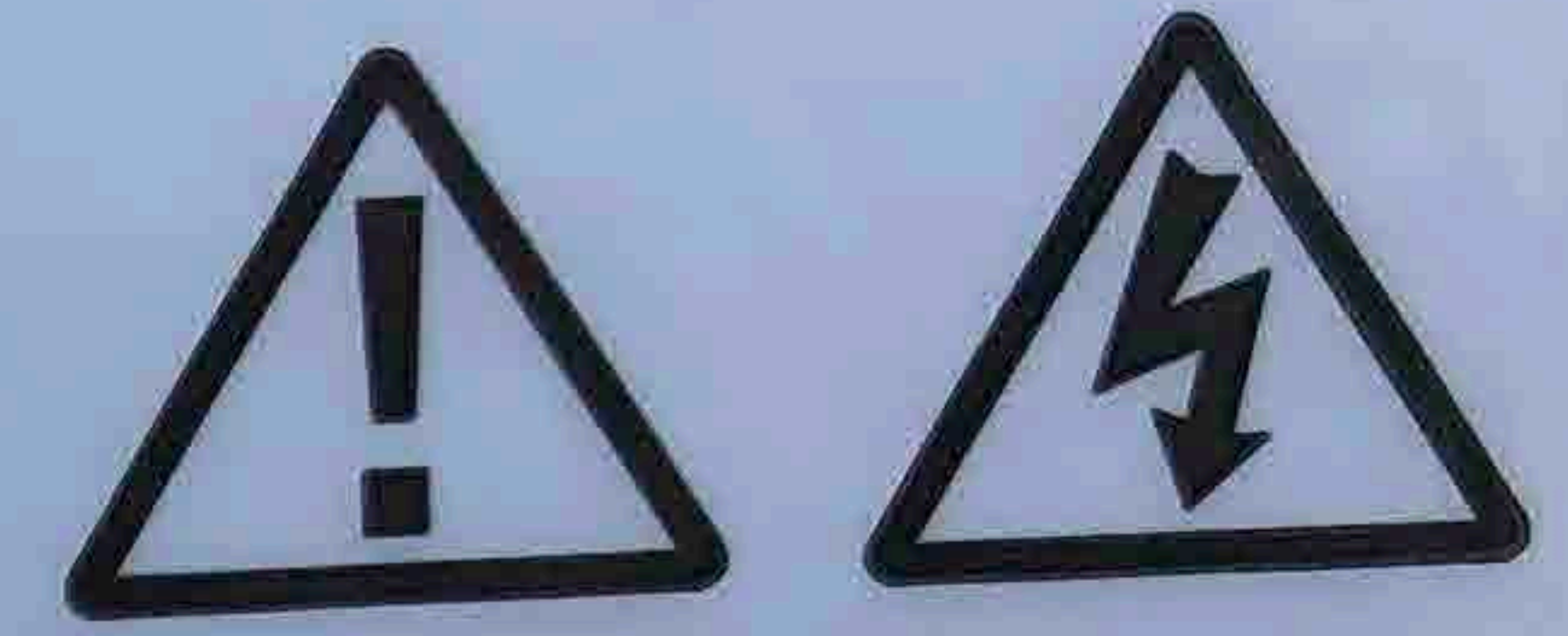
Q.PEAK DUO BLK ML-G10+ 400

Q CELLS

PERFORMANCE AT STANDARD TEST CONDITIONS*

Nominal Power* (+5W/-0W)	P_{MPP}	[W]	400
Short circuit current*	I_{SC}	[A]	11.14
Open circuit voltage*	V_{OC}	[V]	45.30
Current at maximum power	I_{MPP}	[A]	10.77
Voltage at maximum power	V_{MPP}	[V]	37.13
Maximum system voltage	V_{SYS}	[V]	1000 (IEC) 1000 (UL)
Weight	M	[kg / lbs]	22.0 / 48.5

Assembled in USA



DANGER!
Risk of electric shock!
 DO NOT connect or disconnect plug contacts while system is under load current. Refer to the Installation and Operation Manual before installing, operating or servicing this unit.

DANGER!
Risque de choc électrique!
 NE PAS connecter ou déconnecter les connecteurs lorsque le système est en charge. Consultez le manuel d'installation et d'utilisation avant installation, utilisation et entretien du produit.

Fire Rating: Class C / Type 2
Design load: 55 lbs/ft²
Fuse Rating: 20 A
 For field connections, use minimum No.12 AWG copper wires insulated for a minimum of 90 °C

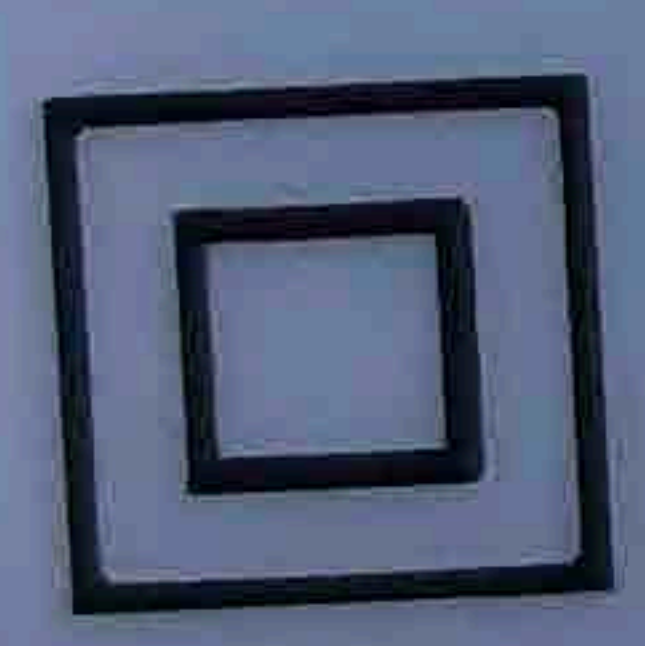
U.S. Patent No. 9,893,215
 (solar cells)

EMAIL service@q-cells.com
WEB www.q-cells.com

*Measurement tolerances: $P_{MPP} \pm 3\%$; I_{SC} , $V_{OC} \pm 5\%$ at STC: 1000 W/m², 25 ± 2 °C, AM 1.5 according to IEC 60904-3. Data given are rated (nominal) values. IEC 61215:2016; IEC 61730:2016.



www.tuv.com
 ID1111220277



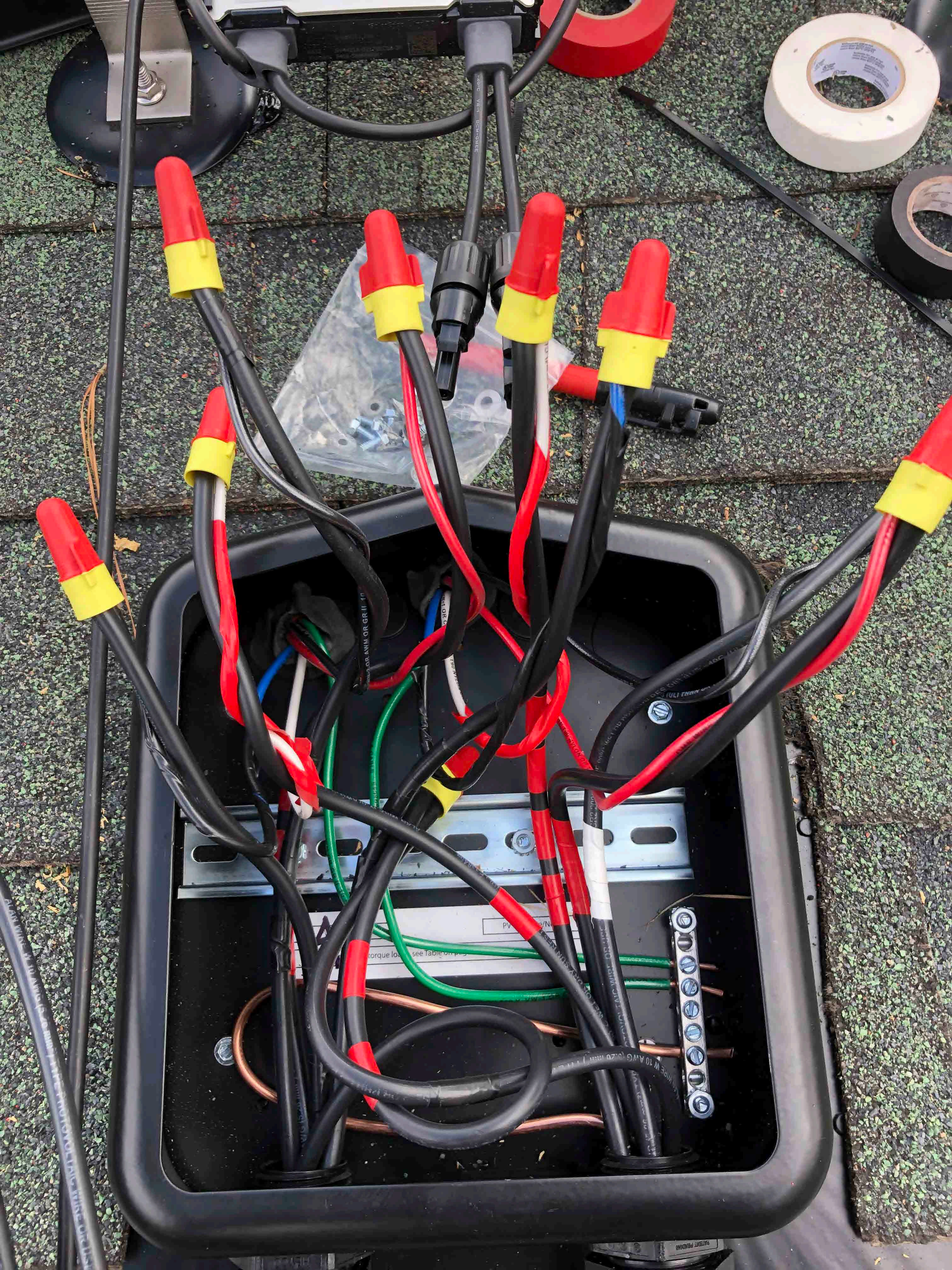
201222081553402179

Hanwha Q CELLS USA Inc.,
 300 Nexus Drive, Dalton GA 30721, USA
Certification holder: Hanwha Q CELLS GmbH













FOR G11

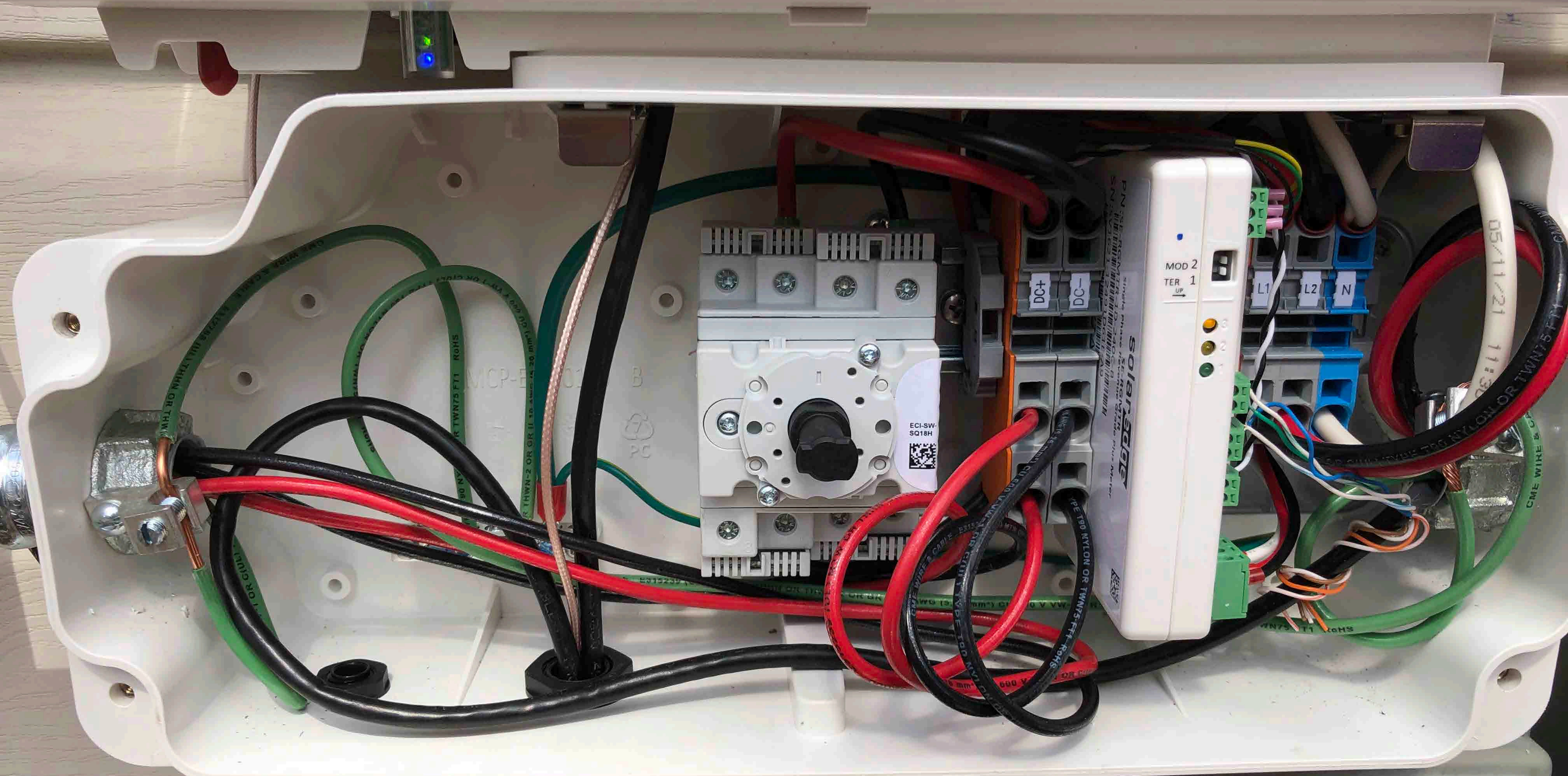
CME WIRE &

OR G10E

DIR B







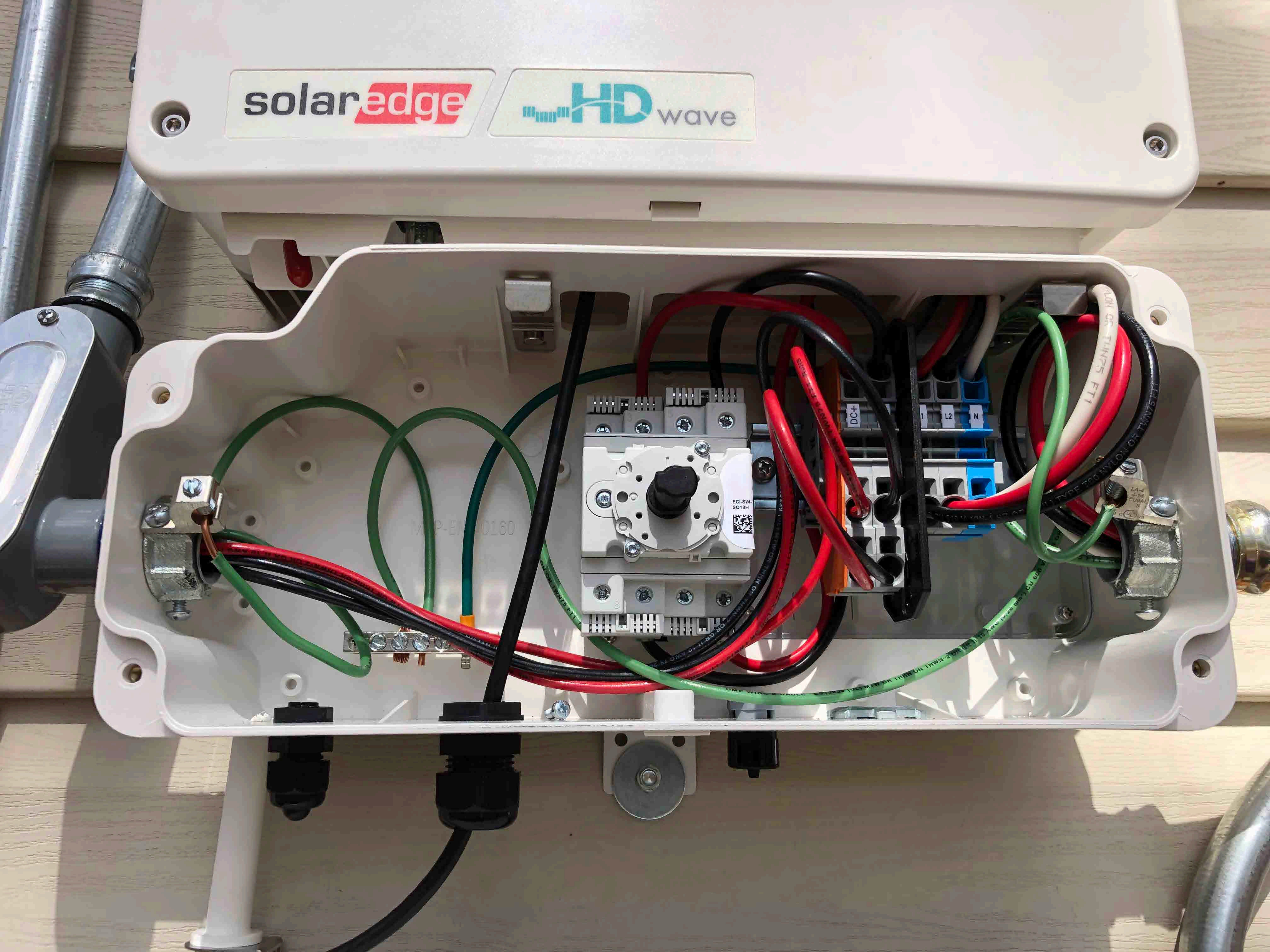
TELEPHONE
NETWORK
INTERFACE

SNAP

CUSTOMER

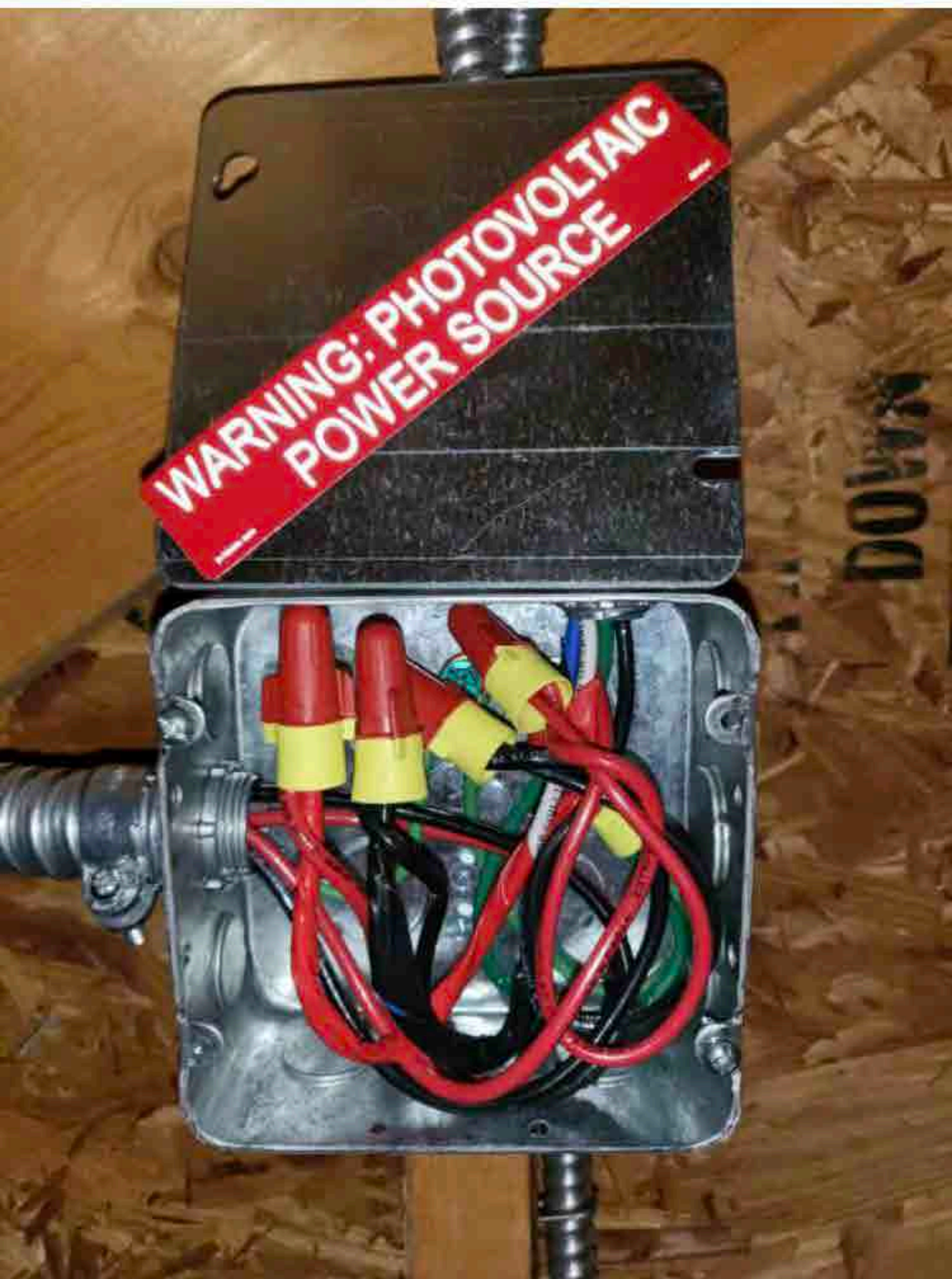
solar**edge**

HD wave



Done

10 of 10



Done

9 of 10











