

















IQ Combiner 3 ES

Photovoltaic
Combiner Box
X-IQ-AM1-240-3-ES

Electrical ratings

Voltage 240VAC, 60Hz
DG Breakers 80A MAX (combined)
DG Inputs 64A MAX (combined)
Output 65A MAX, 90A MAX feed
Temperature 46°C MAX ambient
Use only Eaton BR series Breakers (60A r

S/N:



P/N:



**Dedicated solar and DG Combiner Box - do
not use for backfeed**

Connection	Wire size
DG Breaker	14-10 AWG 8 AWG 6-4 AWG
60A Circuit Breaker only	4-1/0 AWG
Neutral and ground	
Large screw	14-1/0 AWG
Small screw	6-14 AWG
Main lug	10-4 AWG 3-2/0 AWG

Copper conductors only, rated min. 75°C.
Follow NFPA 70 (NEC), or CSA C22.1 and 107.1





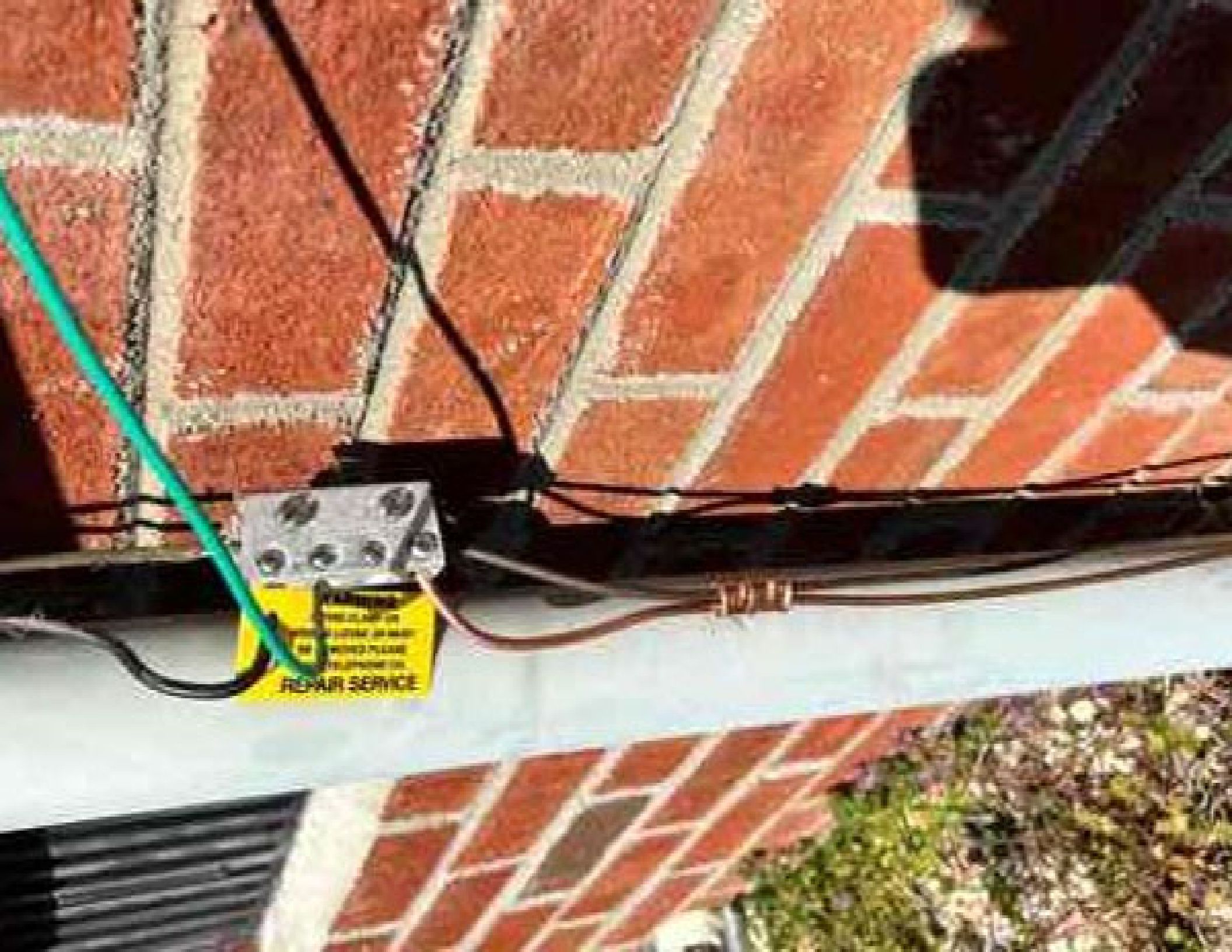












WARNING:
DO NOT TOUCH OR
MOVE THIS EQUIPMENT
OR WIRING. IT IS
UNDER MAINTENANCE.
CALL THE
REPAIR SERVICE.







BLUE RAVEN

Job Hazard Analysis

CUSTOMER NAME

Henry Delepot

INSTALLATION DATE

02-16-22

ADDRESS: 40 Saddlebrook Dr. Frying-Montana, NC 27526

HAZARD CATEGORY	POTENTIAL HAZARDS	HAZARD CONTROLS
Ladder Safety	<ul style="list-style-type: none"> • Single ended • Defective ladders • Distraction 	Ladder 3ft+ above eave and harness
Fall Protection	<ul style="list-style-type: none"> • Fall from 6' or greater 	proper anchors and harness of ropes
Electrical Safety	<ul style="list-style-type: none"> • Electrocution • ARC flash 	wear PPE
Heat & Related Issues	<ul style="list-style-type: none"> • High heat - 100° or higher • Extreme heat - 100° or higher 	Take break when need to and stay hydrated.
Public Protection	<ul style="list-style-type: none"> • Tripping objects • Distraction 	Caution tape around site and cones
NEAREST HOSPITAL:	Central Hospital 215 Brightwater Dr Lenoir, NC 27546	
SAFETY CONTACT:	Henry Mull: 828-596-5514	
Additional Notes		
Falling Objects	Falls	
Slips	Chits	
Trips	Weather Conditions	
Crew Members		
	Name	Signature
1	Toddy Edwards	Toddy Edwards
2	Josh Williams	Josh Williams
3	Drew Russell	Drew Russell
4		
5		
6		

Devin J. Brown

Crew Lead (print)

[Signature]

Crew Lead (signature)

⚠️ WARNING

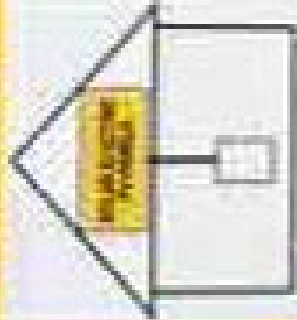
ELECTRIC SHOCK HAZARD

TERMINALS ON THE LINE AND
LOAD SIDES MAY BE ENERGIZED
IN THE OPEN POSITION

**SOLAR PV SYSTEM EQUIPPED
WITH RAPID SHUTDOWN**

TURN RAPID SHUTDOWN

SWITCH TO THE
"OFF" POSITION TO
SHUT DOWN PV SYSTEM
AND REDUCE
SHOCK HAZARD
IN THE ARRAY



PHOTOVOLTAIC SYSTEM

⚠️ AC DISCONNECT ⚠️

RATED AC OUTPUT CURRENT: 15 A
NOMINAL OPERATING AC VOLTAGE: 120 V

⚠️ WARNING

DUAL POWER SUPPLY

SOURCES: UTILITY GRID AND
PV SOLAR ELECTRIC SYSTEM

⚠️ WARNING

DO NOT RELIANCE
THIS OVERCURRENT
DEVICE

⚠️ WARNING

WARNING: This device is not intended to be used as a circuit breaker. It is not designed to interrupt fault currents. It is not intended to be used as a disconnecting device. It is not intended to be used as a disconnecting device.

 GENERAL DUTY SAFETY SWITCH INTERRUPTOR DE SEGURIDAD DE SERVICIO GENERAL

⚠ DANGER / PELIGRO
Power to the load may be energized in the open position.

RAPID SHUTDOWN SWITCH FOR SOLAR PV SYSTEM

⚠ WARNING
ELECTRIC SHOCK HAZARD

TERMINALS ON THE LINE AND LOAD SIDES MAY BE ENERGIZED IN THE OPEN POSITION

⚠ WARNING
POWER TO THE BUS BARS SHALL BE REMOVED FROM ALL DISTRIBUTION UTILITY DISCONNECT DEVICES

PHOTOVOLTAIC SYSTEM AC DISCONNECT

▲ RATED AC OUTPUT CURRENT
▲ NORMAL OPERATING AC VOLTAGE

10A

120V

10A

120V

⚠ WARNING

ELECTRIC SHOCK HAZARD

TERMINALS ON THE LIVE AND LOAD SIDES MAY BE ENERGIZED IN THE OPEN POSITION.

**PHOTOVOLTAIC SYSTEM
⚠ AC DISCONNECT ⚠**

RATED AC OUTPUT CURRENT 15 A
NOMINAL OPERATING AC VOLTAGE 120 V

⚠ WARNING

THIS EQUIPMENT FED BY MULTIPLE SOURCES. TOTAL RATING OF ALL OVERCURRENT DEVICES, EXCLUDING MAIN SUPPLY OVERCURRENT DEVICE, SHALL NOT EXCEED CAPACITY OF BUSBARS.

⚠ WARNING

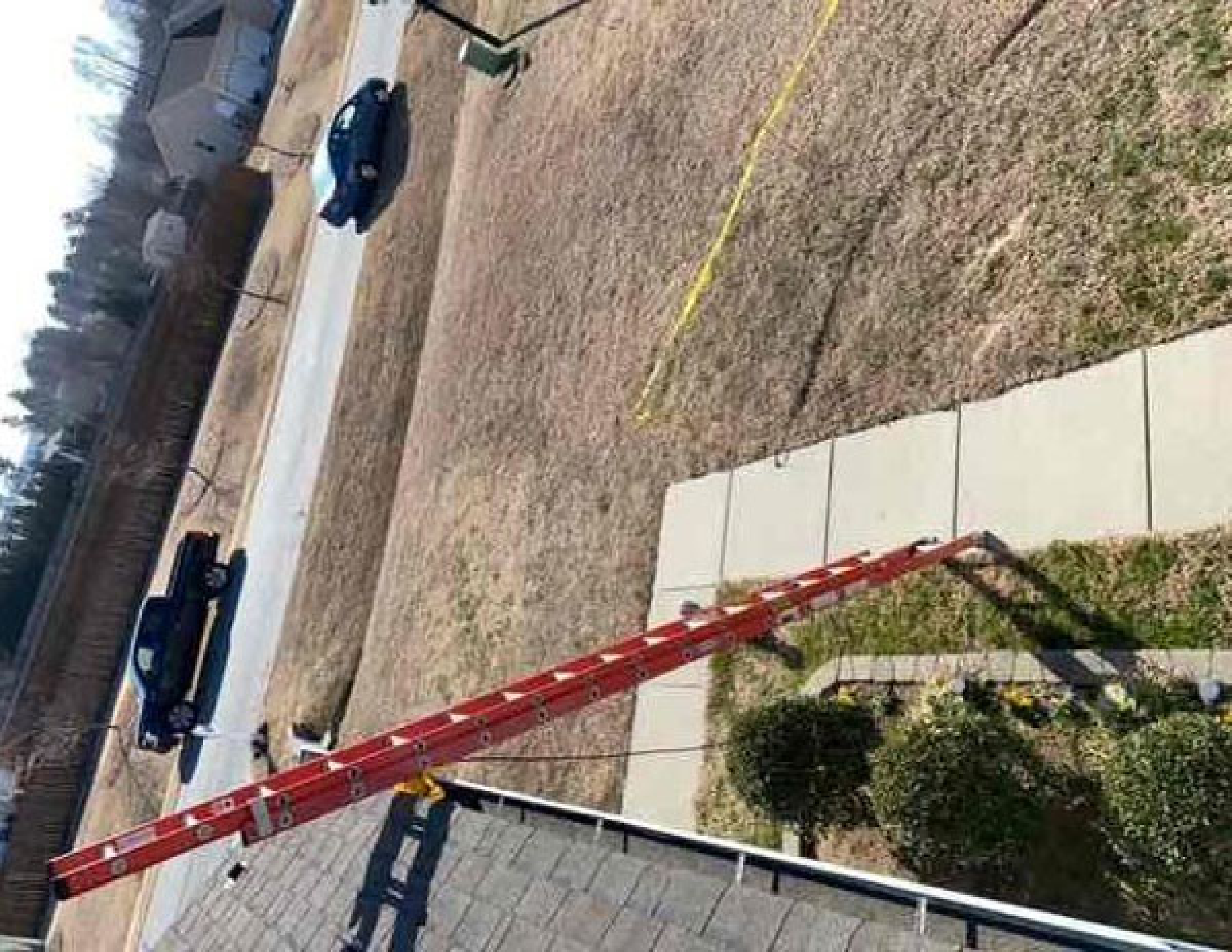
**PHOTOVOLTAIC SYSTEM
COMBINER PANEL**

DO NOT ADD LOADS

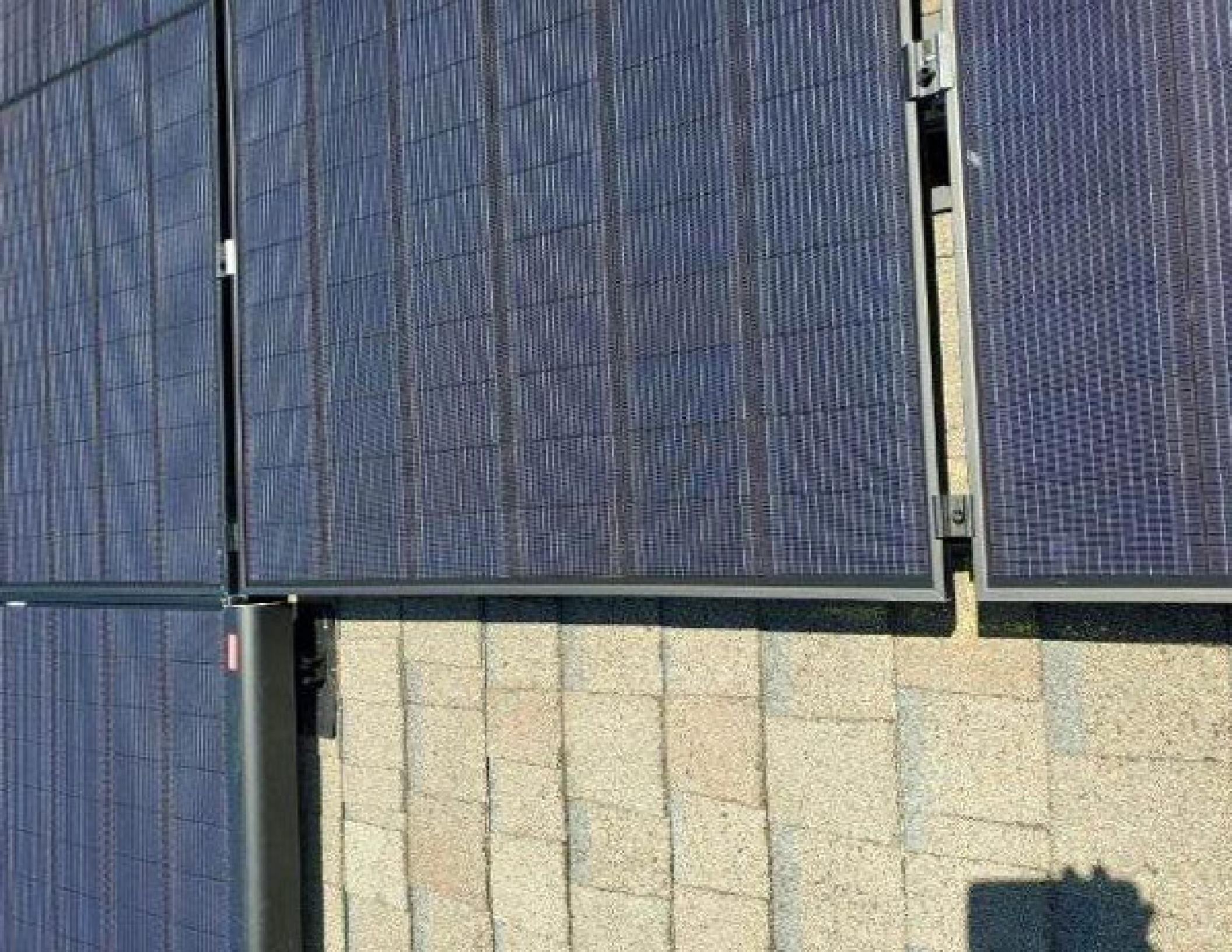
⚠ WARNING

PHOTOVOLTAIC SYSTEMS ARE NOT TO BE USED IN THE FOLLOWING SITUATIONS:
• IN A SERVICE AREA WHERE A FLAMMABLE OR EXPLOSIVE ATMOSPHERE IS PRESENT.
• IN A SERVICE AREA WHERE THE EQUIPMENT IS EXPOSED TO OZONE OR OTHER
CORROSIVE GASES.
• IN A SERVICE AREA WHERE THE EQUIPMENT IS EXPOSED TO SOLAR RADIATION
OR OTHER HEAT SOURCES.







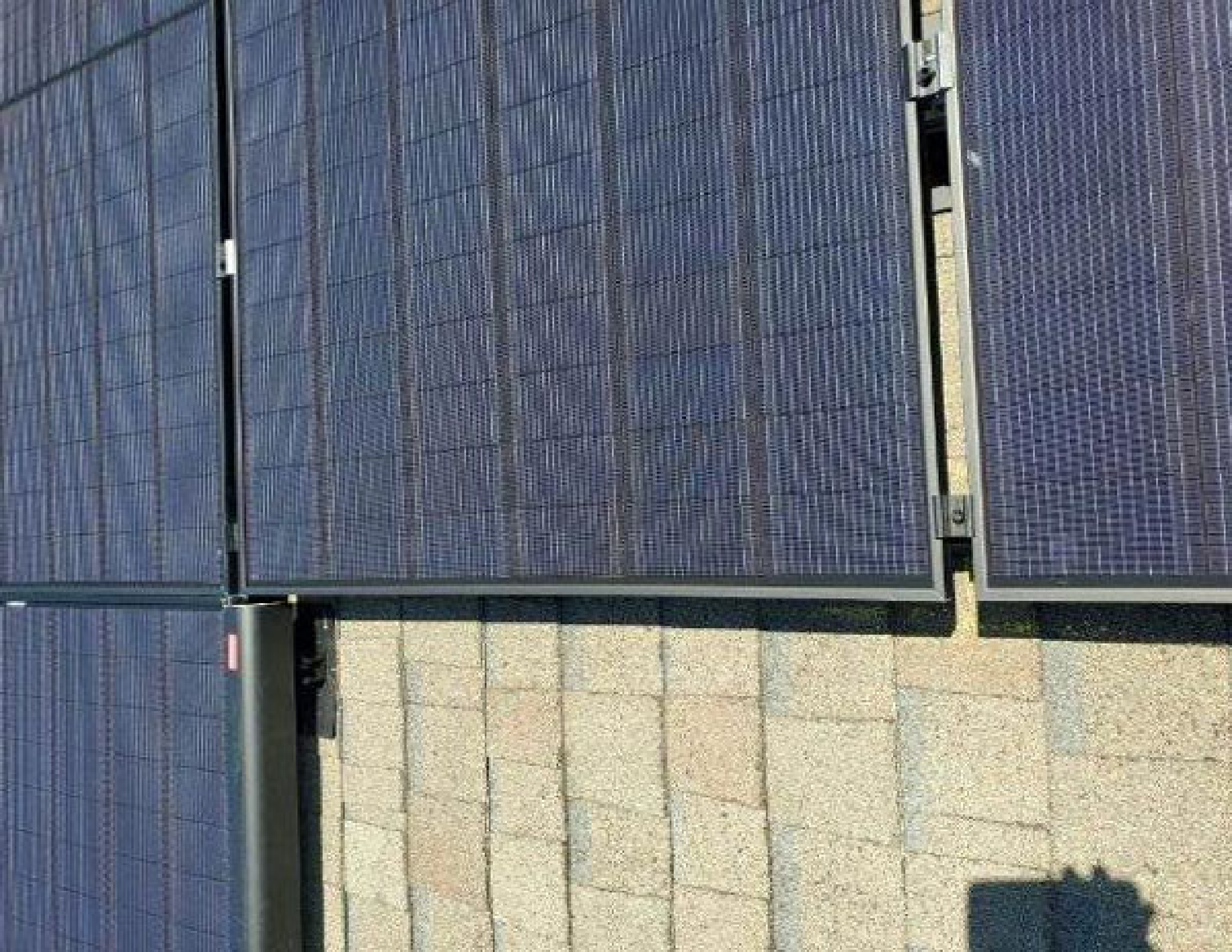




















Henry DeAnna
40 Sandbrook Dr
Elmwood, New Jersey





021

640-00388-14
250VAC 20A
+79°C 2103



02 10





 ENPHASE

IQ7+

IQ7+ (518) Support responsive Inverter
Full-featured panel-level inverter, rated to
support up to 10kW (50kW/100kW)

Power Factor Range: 0.99
DC Input Voltage: 0-150V
Max. AC Output Current: 16A
Max. AC Output Voltage: 120V
AC Output Voltage: 240V (480V)
AC Output Frequency: 50/60Hz
Grid-tied inverter with maximum 100kW
Maximum AC Output: 100kW (100A)
Maximum AC Output Voltage: 240V (480V)
Maximum AC Output Frequency: 50/60Hz
UL1741, UL1741E, UL1741F, UL1741G, UL1741H, UL1741I, UL1741J, UL1741K, UL1741L, UL1741M, UL1741N, UL1741O, UL1741P, UL1741Q, UL1741R, UL1741S, UL1741T, UL1741U, UL1741V, UL1741W, UL1741X, UL1741Y, UL1741Z



This device complies with part 15 of FCC Part 15B. Operation is subject to the following two conditions: (1) This device may not cause harmful interference, and (2) This device must accept any interference received, including interference that may cause undesired operation.

CAUTION: RISK OF SHOCK. WARNINGS TO THE USER:
REMOVING THE COVER EXPOSES THE SURFACE MOUNTED AND MAY BE ELECTRICALLY LIVE. TO PREVENT ELECTRICAL SHOCK, THE COVER MUST BE PROPERLY GROUNDED AND THE USER MUST BE PROPERLY TRAINED TO HANDLE THE DEVICE. THE USER MUST BE PROPERLY TRAINED TO HANDLE THE DEVICE. THE USER MUST BE PROPERLY TRAINED TO HANDLE THE DEVICE. THE USER MUST BE PROPERLY TRAINED TO HANDLE THE DEVICE.

ATTENTION: RISK OF SHOCK. WARNINGS TO THE USER:
REMOVING THE COVER EXPOSES THE SURFACE MOUNTED AND MAY BE ELECTRICALLY LIVE. TO PREVENT ELECTRICAL SHOCK, THE COVER MUST BE PROPERLY GROUNDED AND THE USER MUST BE PROPERLY TRAINED TO HANDLE THE DEVICE. THE USER MUST BE PROPERLY TRAINED TO HANDLE THE DEVICE. THE USER MUST BE PROPERLY TRAINED TO HANDLE THE DEVICE. THE USER MUST BE PROPERLY TRAINED TO HANDLE THE DEVICE.

10/2 G NMIM-B

INDOOR WIRE

250 FT

76.20 M



USA

10/2 G NMIM-B

INDOOR WIRE

250 FT

76.20 M



ENCORE WIRE

USA

10/2 G NMIM-B

INDOOR WIRE

250 FT

76.20 M



ENCORE WIRE

USA

UNIRAC SFM INFINITY RACKING
FOR MOUNTING AND GROUNDING SOLAR SYSTEMS

UL-1703, UL2703

UNIRAC SFM INFINITY RACKING

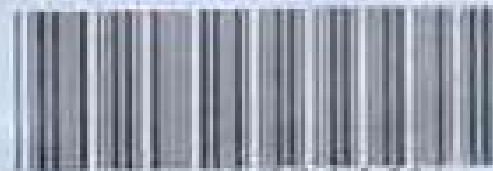
FOR MOUNTING AND CABLEING SOLAR SYSTEMS

18, 1788, 18, 1788

 **UNIRAC**

BETTER SOLAR STARTS HERE

WWW.UNIRAC.COM



250111U

SFM UNIV TRIMRAIL CLIP DARK

Pack Size - 10

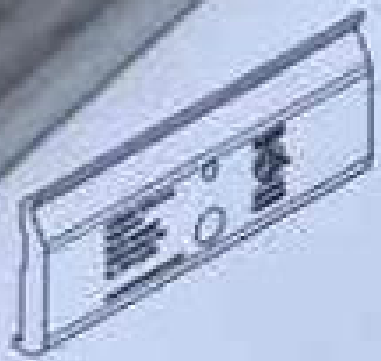
WO/PO# 0044134-02

Manufacture date: 05/2021

Factory Code: 018A



California Proposition 65 - **WARNING: Cancer and Reproductive Harm** - www.p65warnings.ca.gov



UNIRAC

BETTER SOLAR STARTS HERE

www.unirac.com



008114M

MLPE MOUNT ASSY

Pack Size - 10

WG/PG# 0044057-00

Manufacture date: 05/2021

Factory Code: 025A



California Proposition 65 (P) **WARNING:** Cancer and Reproductive Harm - www.P65Warnings.ca.gov

UNIRAC®



FLASHKIT SFM SLIDER S

0042710

FLASHKIT SFM SLIDER S COMP ONE
SAMSUNG 15
Factory Code: 31



REPT 0042710-01 0042710-01 0042710-01



 **UNIRAC**
BETTER SOLAR STARTS HERE

www.unirac.com



253010U

SFM SPLICE 6.5"

Pack Size: 10

WO/PO# : 0043974-00

Manufacture date: **APR 2011**

Factory Code : 010A



810039363379

 **UNIRAC**[®]
BETTER SOLAR STARTS HERE



SFM N/S BONDING CLAMP 008000U

UPC Code

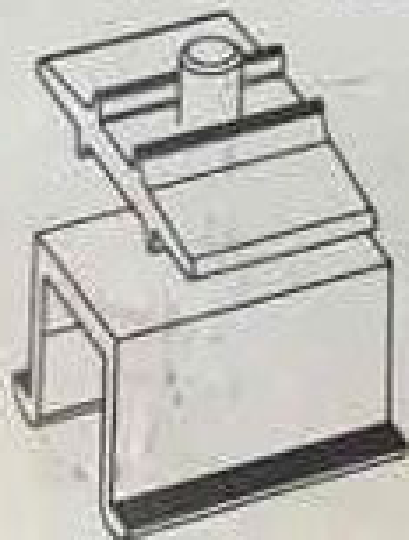



8 10039 36089 7

Pack Size: 20

Assembly Date:
12/10/20-01/10/21

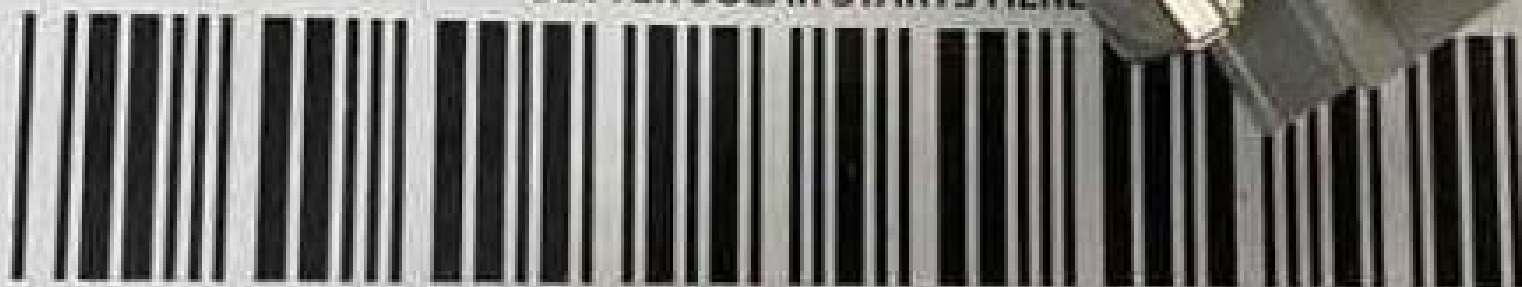
PO#0043552-00



California Proposition 65  WARNING: Cancer and
Reproductive Harm - www.P65Warnings.ca.gov



 **UNIRAC**
BETTER SOLAR STARTS HERE



SFM TRIM BONDING CLAMP 008100U

UPC Code

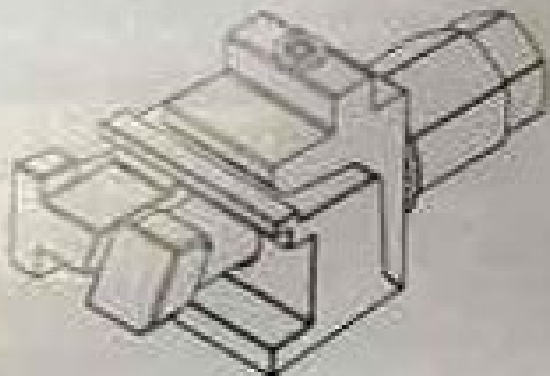


Pack Size: 10

Assembly Date:

12/10/20-01/10/21

PO#0043552-00



California Proposition 65  **WARNING:** Cancer and Reproductive Harm— www.P65Warnings.ca.gov



ILSCO SGB-4
Industrial Safety Products



LISTED
BY



UL 1001

Approved for Marine

LAY-IN GROUND LUG
STAINLESS STEEL SCREWS
WIRE RANGE 4 - 14
MAX. MAX FRAME THICKNESS
ILSCO SOLARE
PATENT NO. D740,082.3

ILSCO Marine, Cable and Manufacturing
10000 10th Street, San Diego, CA 92121

08/20021



ILSCO
10000 10th Street
San Diego, CA 92121

QTY
50

Panel Ground

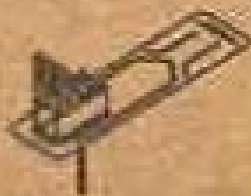


Shipping label with barcode and QR code. The word "JOURNAL" is printed vertically on the right side of the label.



FLASHKIT SFM TRIM S

004201D



FLASHKIT SFM TRIM S COMP DARK
Pack Size: 10

UPC Code



Assembly Date
1/10/21-2/19/21
YIPOR004201D-02

UT IRAC



UT 2023
UT - 2023-2024

UT - 2023-2024
UT - 2023-2024





UNIRAC

BETTER SOLAR STARTS HERE

www.unirac.com



253020U

SFM MICRORAIL 2"

Pack Size: 10

WO/PO# : 0044373-00

Manufacture date: 10/17/2011

Factory Code : 010A



810039363400

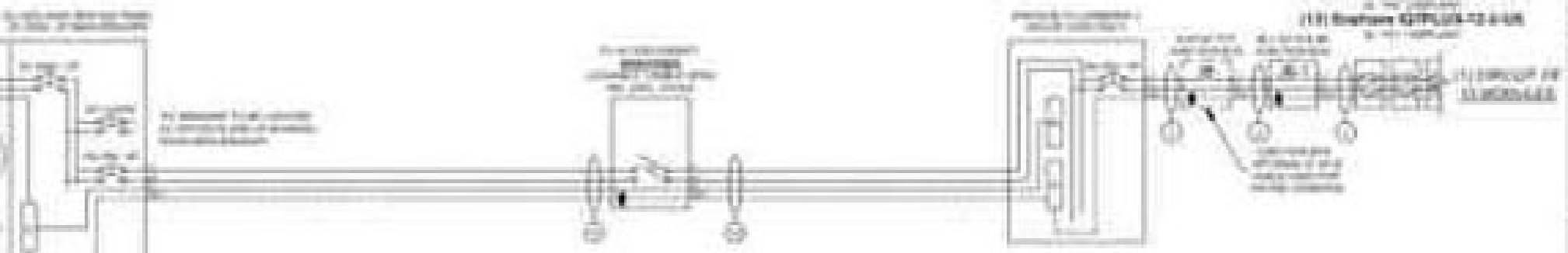
REVISIONS TO THIS PLAN
 REVISION NO. DATE BY
 REVISION NO. DATE BY
 REVISION NO. DATE BY

REVISION NOTES

1. (1) (2) (3) (4) (5) (6) (7) (8) (9) (10) (11) (12) (13) (14) (15) (16) (17) (18) (19) (20) (21) (22) (23) (24) (25) (26) (27) (28) (29) (30) (31) (32) (33) (34) (35) (36) (37) (38) (39) (40) (41) (42) (43) (44) (45) (46) (47) (48) (49) (50) (51) (52) (53) (54) (55) (56) (57) (58) (59) (60) (61) (62) (63) (64) (65) (66) (67) (68) (69) (70) (71) (72) (73) (74) (75) (76) (77) (78) (79) (80) (81) (82) (83) (84) (85) (86) (87) (88) (89) (90) (91) (92) (93) (94) (95) (96) (97) (98) (99) (100)

ELECTRICAL NOTES

1. ALL WORK SHALL BE IN ACCORDANCE WITH THE NATIONAL ELECTRICAL CODE (NEC) AND THE NORTH CAROLINA ELECTRICAL CODE (NCEC).



1. ALL WORK SHALL BE IN ACCORDANCE WITH THE NATIONAL ELECTRICAL CODE (NEC) AND THE NORTH CAROLINA ELECTRICAL CODE (NCEC).

REVISION NOTES
 1. (1) (2) (3) (4) (5) (6) (7) (8) (9) (10) (11) (12) (13) (14) (15) (16) (17) (18) (19) (20) (21) (22) (23) (24) (25) (26) (27) (28) (29) (30) (31) (32) (33) (34) (35) (36) (37) (38) (39) (40) (41) (42) (43) (44) (45) (46) (47) (48) (49) (50) (51) (52) (53) (54) (55) (56) (57) (58) (59) (60) (61) (62) (63) (64) (65) (66) (67) (68) (69) (70) (71) (72) (73) (74) (75) (76) (77) (78) (79) (80) (81) (82) (83) (84) (85) (86) (87) (88) (89) (90) (91) (92) (93) (94) (95) (96) (97) (98) (99) (100)



CUSTOMER INFORMATION:
 Henry Dwyer

Exp
 C

0



Logitech



SET

MUTE

OFF

Face On

System

Face On

Call Off and On

Logitech
Model # C910
1.5A.00000



LEVEL HERE

SC11082 70-022



http://www.t-mobile.com
1-800-468-1307



LEVEL
HERE

Li-Ion 1500mAh
3.7V

C IS OPTIMAL
WITH BATTERIES





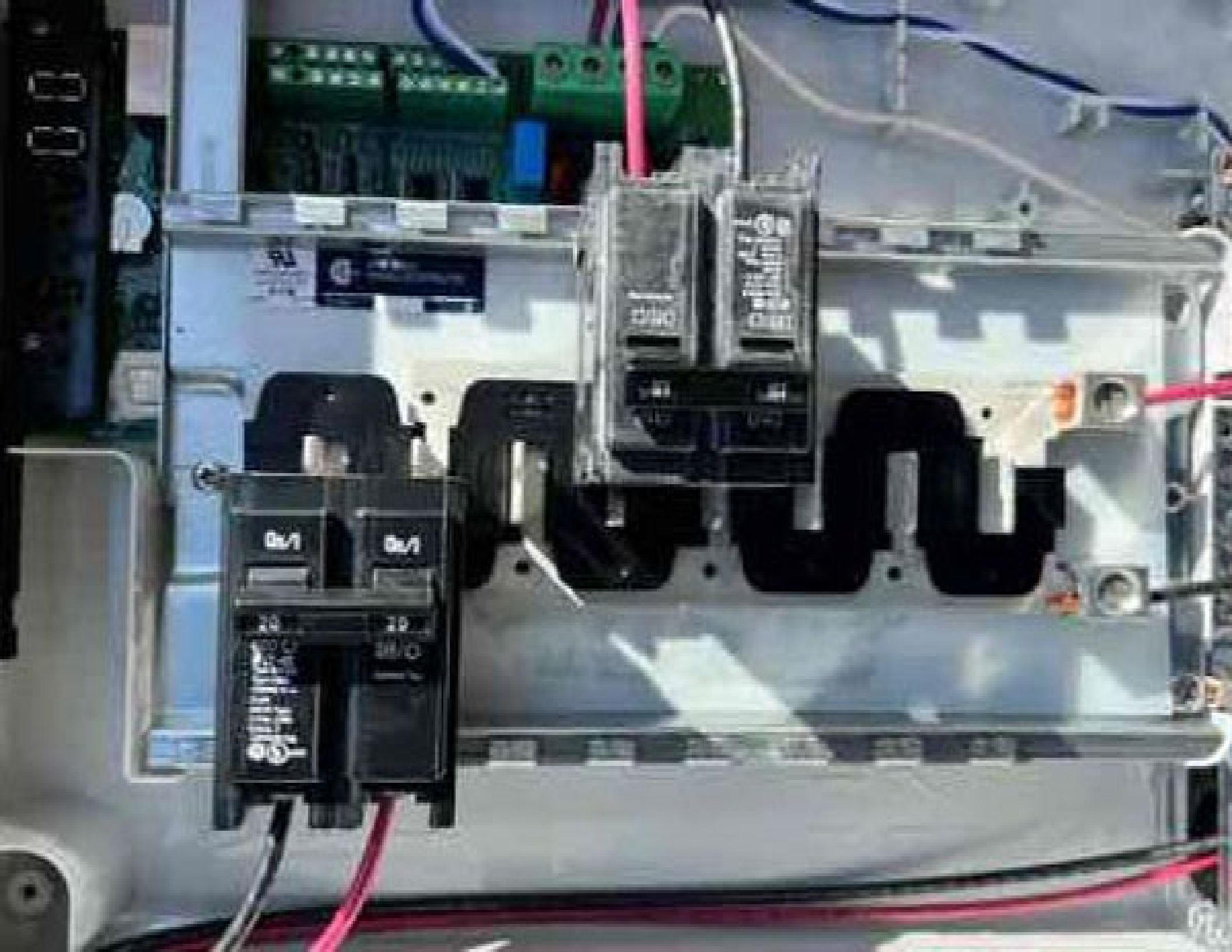






100-100-100
100-100-100
100-100-100

100-100-100
100-100-100
100-100-100





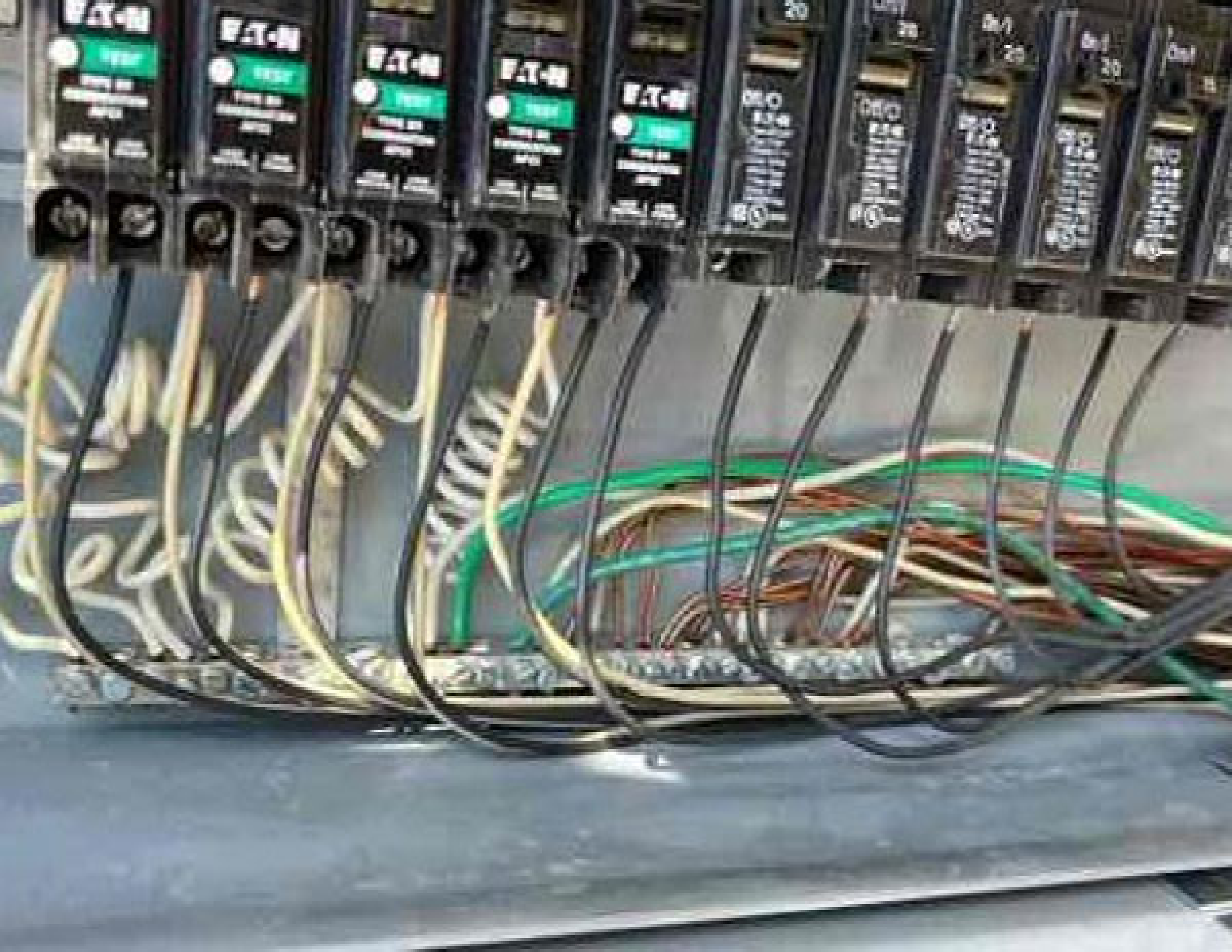




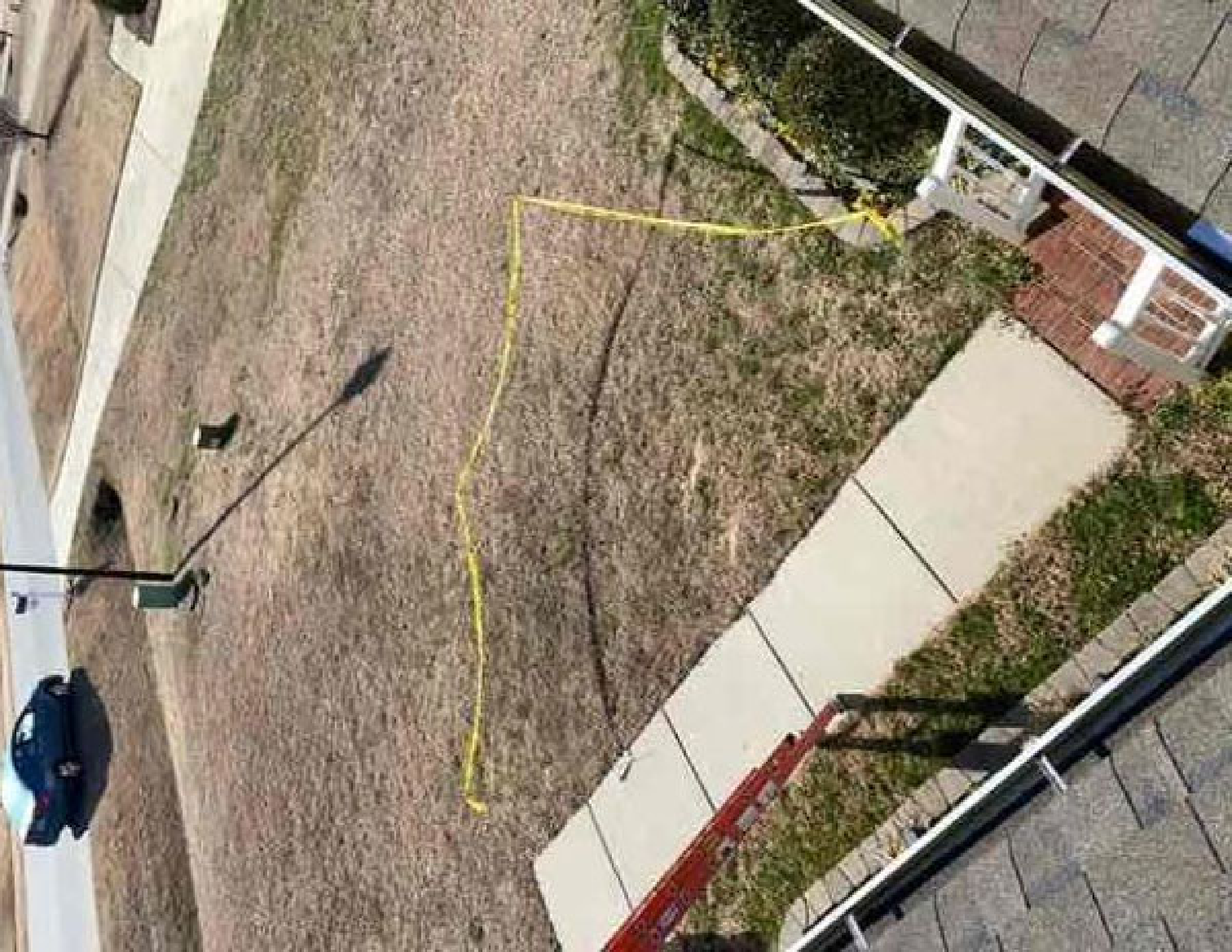












Microinverters & Array

- ✓ Scanned : 13/13
- ⊙ Detected : 0/13
- ✓ Communicating : 13/13
- ✓ Array created : 2
- ⊙ Array assigned : 0
- ✓ Producing power : 13/13

Profile set

: 1/13 (IEEE 1547-2018 PJM v2
201904:1.2.7)

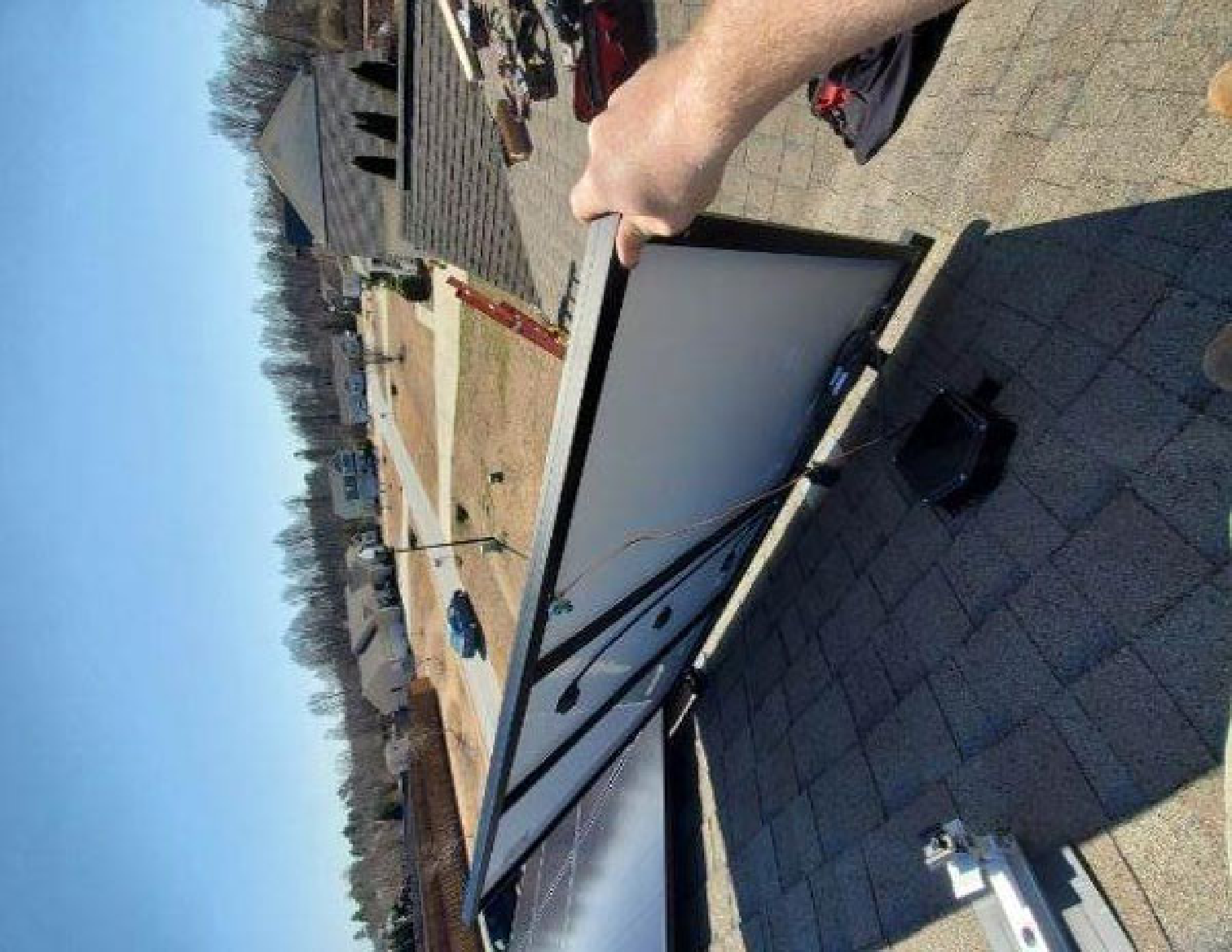
(Please wait for grid profiles to propagate to all microinverters.)

IP ADDRESS: 192.168.0.1

Gateway IP: 192.168.0.1

FORGET THIS NETWORK

REMEMBER THIS NETWORK







WARNING









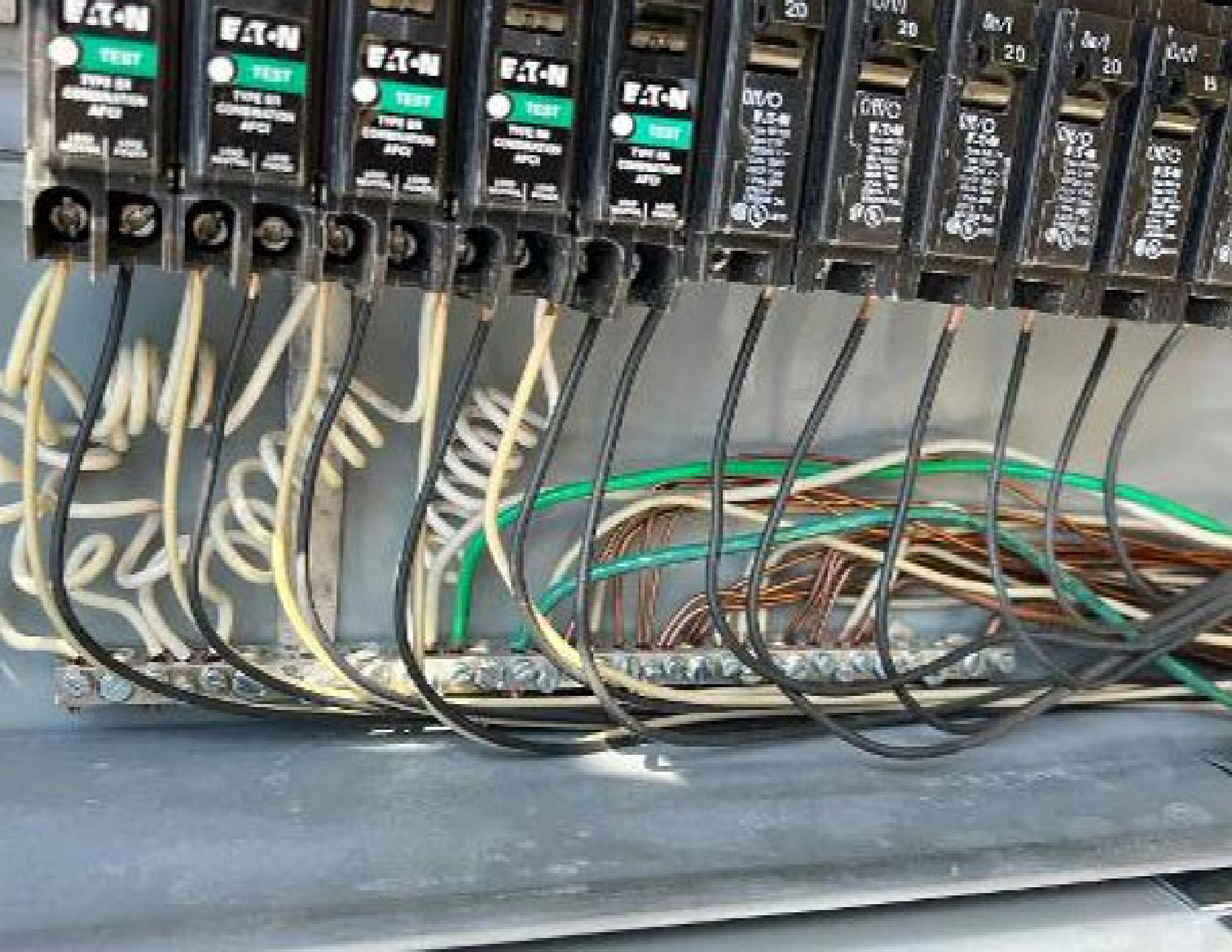
 ecobee

ecobee



















White rectangular label on the wall.

Printed text on the plywood wall, including "JUN 2 2007" and other illegible markings.

6

