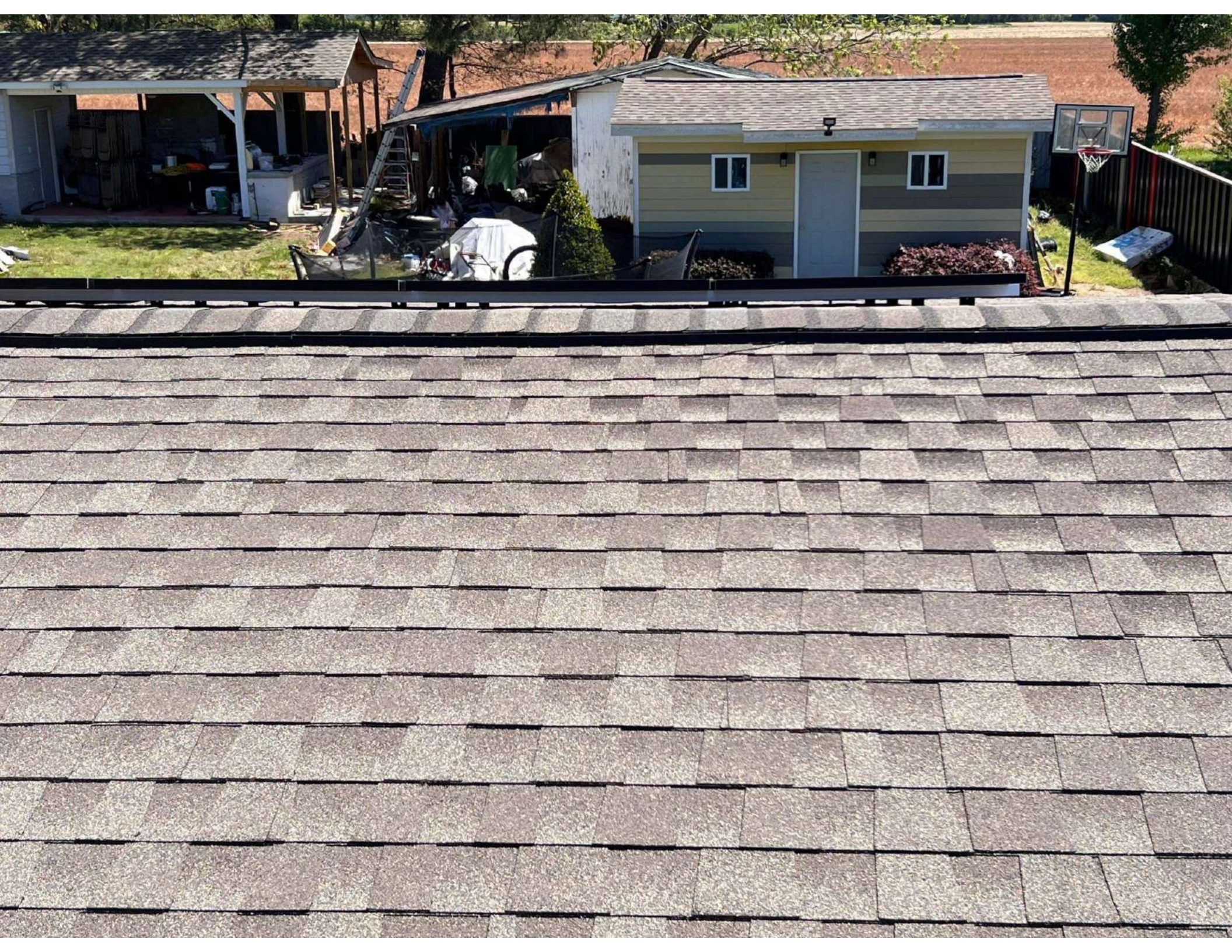
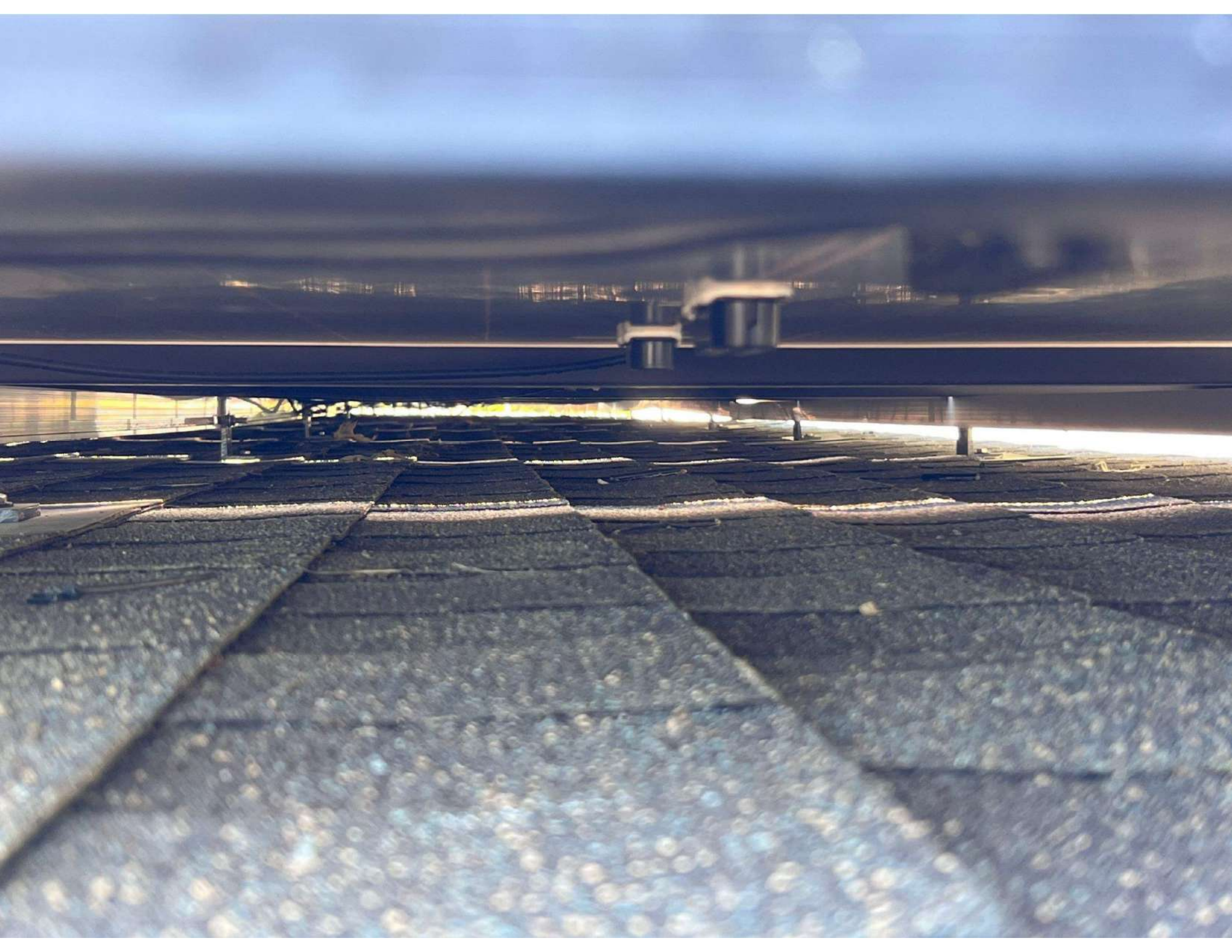




*Dual Rack
Lite Flash L. Kit 12' x 12'*





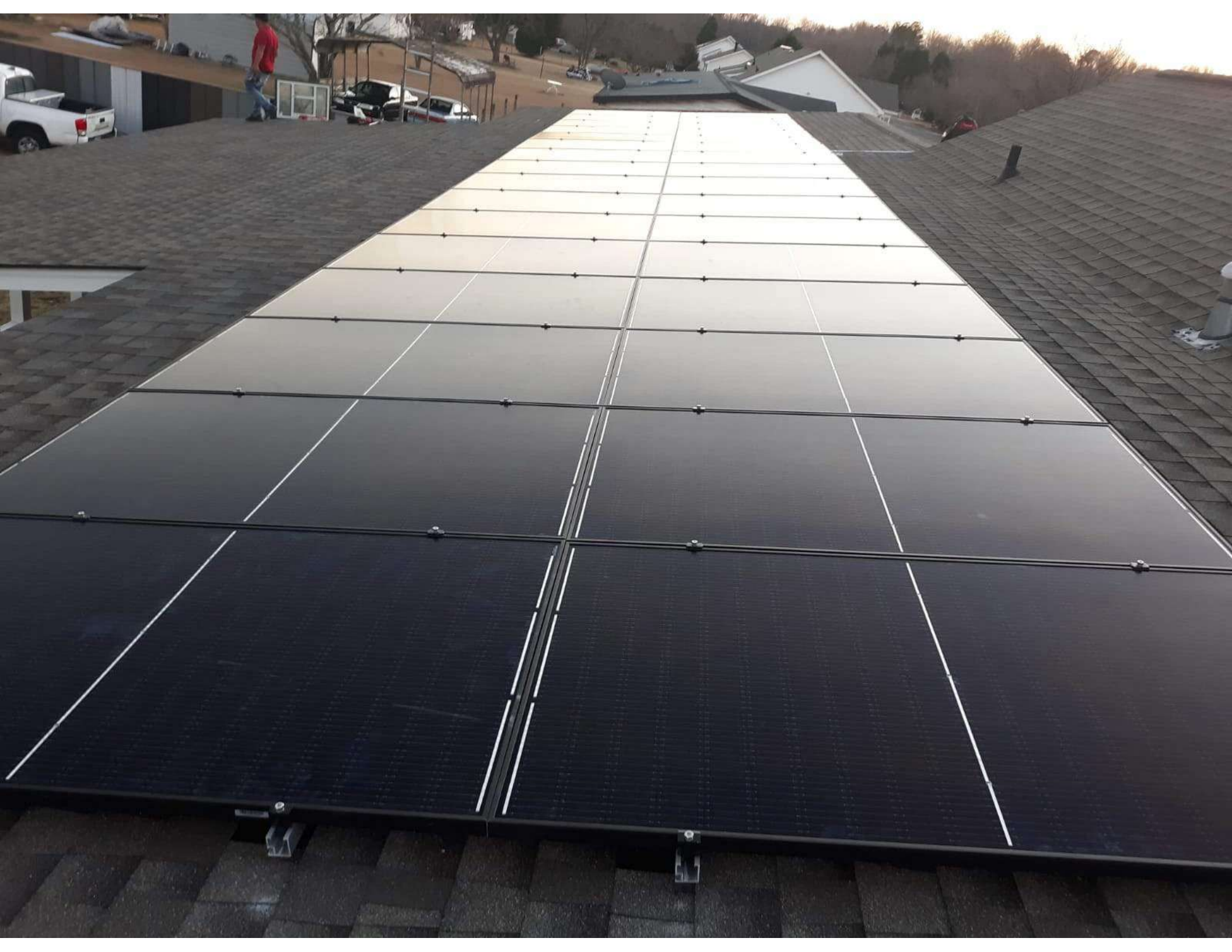












Elite Flash Kit 17" x 17"







PSUHM13780810821

Phono[®] solar

Module Type PS365M4H—20/UHB

Rated Power at STC	(Wp)	365	W±3%
Rated Power Voltage	(Vm)	33.96	V
Rated Power Current	(Im)	10.75	A
Open Circuit Voltage	(Voc)	40.81	V±3%
Short Circuit Current	(Isc)	11.23	A±3%

Maximum Fuse Rating

20A

All Technical Data at STC: AM1.5 E=1000W/m² T_c=25°C

For field connections, use minimum No.12 AWG copper wires insulated for a minimum of 90°C.

See module literature for appropriate mating connectors.

Maximum System Voltage

1500 V DC

Module Fire Performance

TYPE 4

1764 x 1040 mm

Dimension

System Fire Class Rating : See Installation Instructions for Installation Requirements to Achieve a Specified System Fire Class Rating with this Product. This statement should be used and marked on the label.

1 Xinghuo Road Nanjing Hi-Tech Zone 210061
Nanjing P.R. China
Phono Solar Technology Co., Ltd
www.phonosolar.com
Factory ID KH

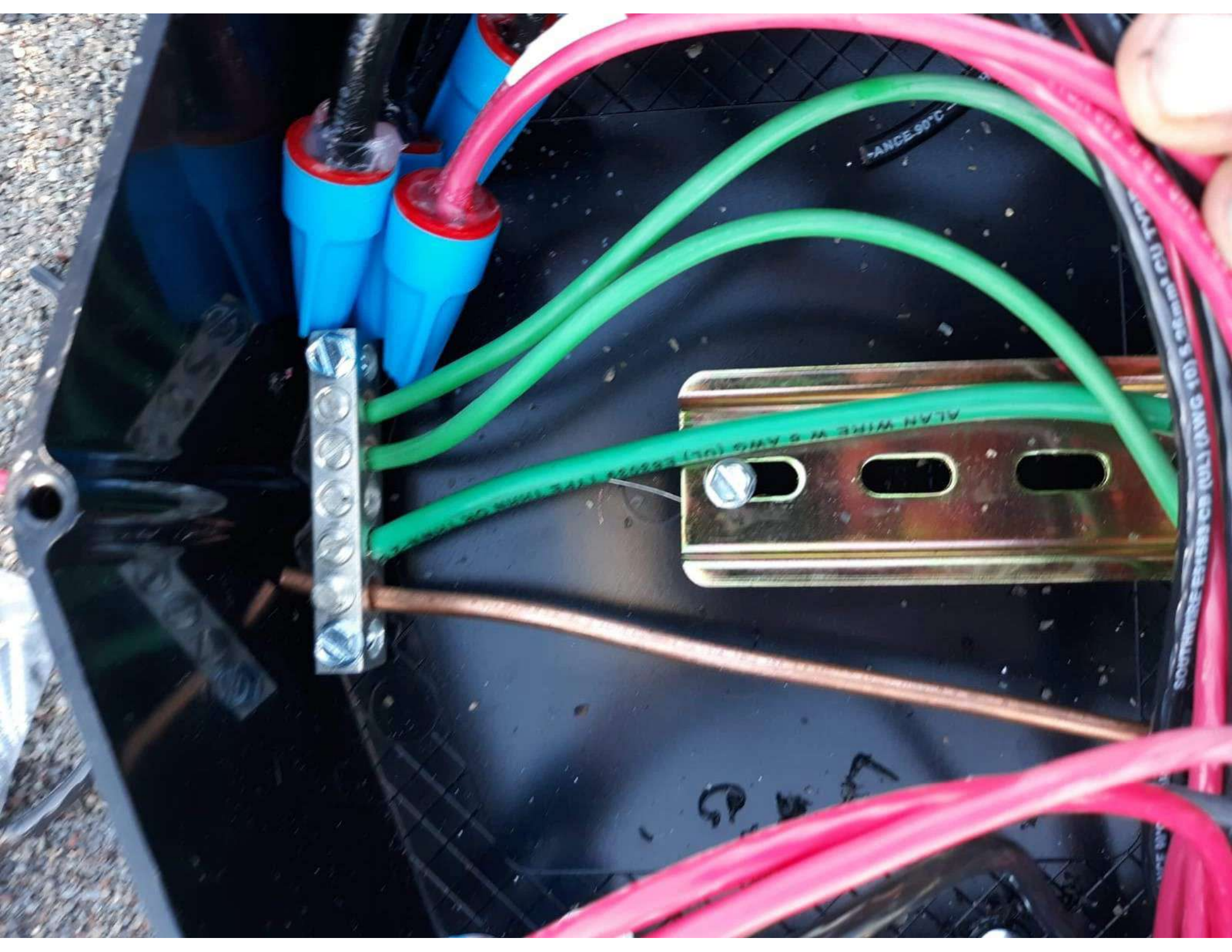


PHOTOVOLTAIC MODULE
OVER 600 VOLTS
E497662

Ce module solaire produit une émission électrique lorsque il est exposé au soleil ou lumière artificielle. Il faut prendre les précautions appropriées pendant la manipulation et l'installation de ce produit.

Made in Cambodia







Dual Back

A close-up photograph showing a silver-colored bolt with a hexagonal head and a threaded shaft. The bolt is inserted through a hole in a black, ribbed metal bracket. The bracket is mounted to a white metal rail. Below the bracket, a silver-colored nut is visible, partially inserted into a hole in the black metal surface. The background is a dark, reflective surface, possibly a pool of water, which shows a reflection of the bolt and bracket. The text "Rack Flash L Kit 12\"/>

*Rack
Flash L Kit 12" x 12"*



