

A close-up photograph of a dual rack mounting bracket installed on a roof. The bracket is a black, L-shaped metal plate. A silver metal bolt is inserted through the top flange of the bracket, passing through a hole in a silver metal gutter. The bottom flange of the bracket is secured to the roof with a silver metal nut. The roof surface is covered in grey asphalt shingles. The text "Dual Rack Lite Flash L. Kit 12\"/>

*Dual Rack  
Lite Flash L. Kit 12" x 12"*

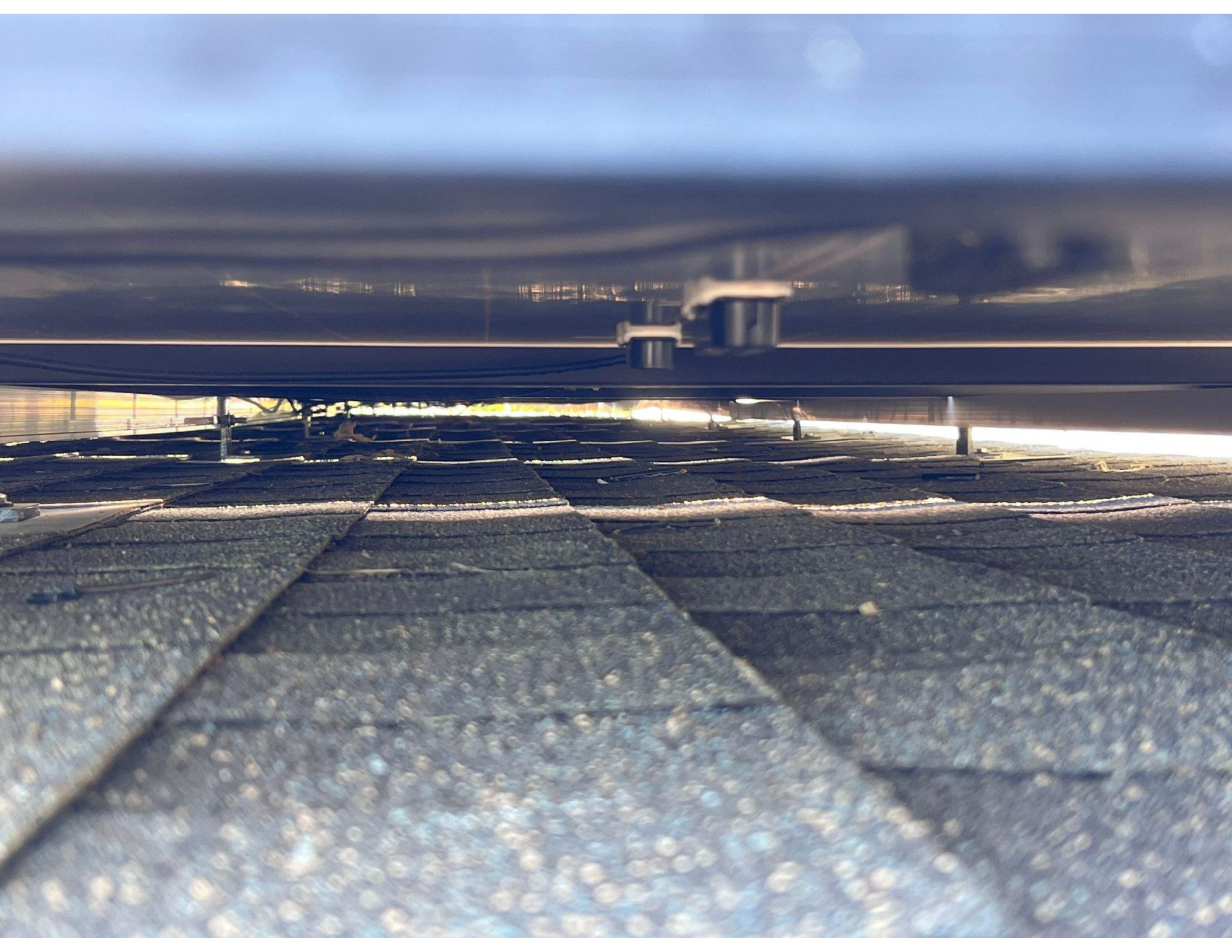


































Elite Flash Kit 17" x 17"











PSUHM13780810821

# Phono<sup>®</sup> solar

## Module Type PS365M4H—20/UHB

Rated Power at STC	(Wp)	365	W±3%
Rated Power Voltage	(Vm)	33.96	V
Rated Power Current	(Im)	10.75	A
Open Circuit Voltage	(Voc)	40.81	V±3%
Short Circuit Current	(Isc)	11.23	A±3%

Maximum Fuse Rating

20A

All Technical Data at STC: AM1.5 E=1000W/m<sup>2</sup> Tc=25°C

For field connections, use minimum No.12 AWG copper wires insulated for a minimum of 90°C.

See module literature for appropriate mating connectors.

Maximum System Voltage

1500 V DC

Module Fire Performance

TYPE 4

1764 x 1040 mm

Dimension

System Fire Class Rating - See Installation Instructions for Installation Requirements to Achieve a Specified System Fire Class Rating with this Product, this statement should be used and marked on the label.

1 Xinghuo Road Nanjing Hi-tech Zone 210061

Nanjing P.R. China

Phono Solar Technology Co., Ltd.

www.phonosolar.com

Factory ID KH



LISTED

PHOTOVOLTAGIC MODULE

OVER 600 VOLTS

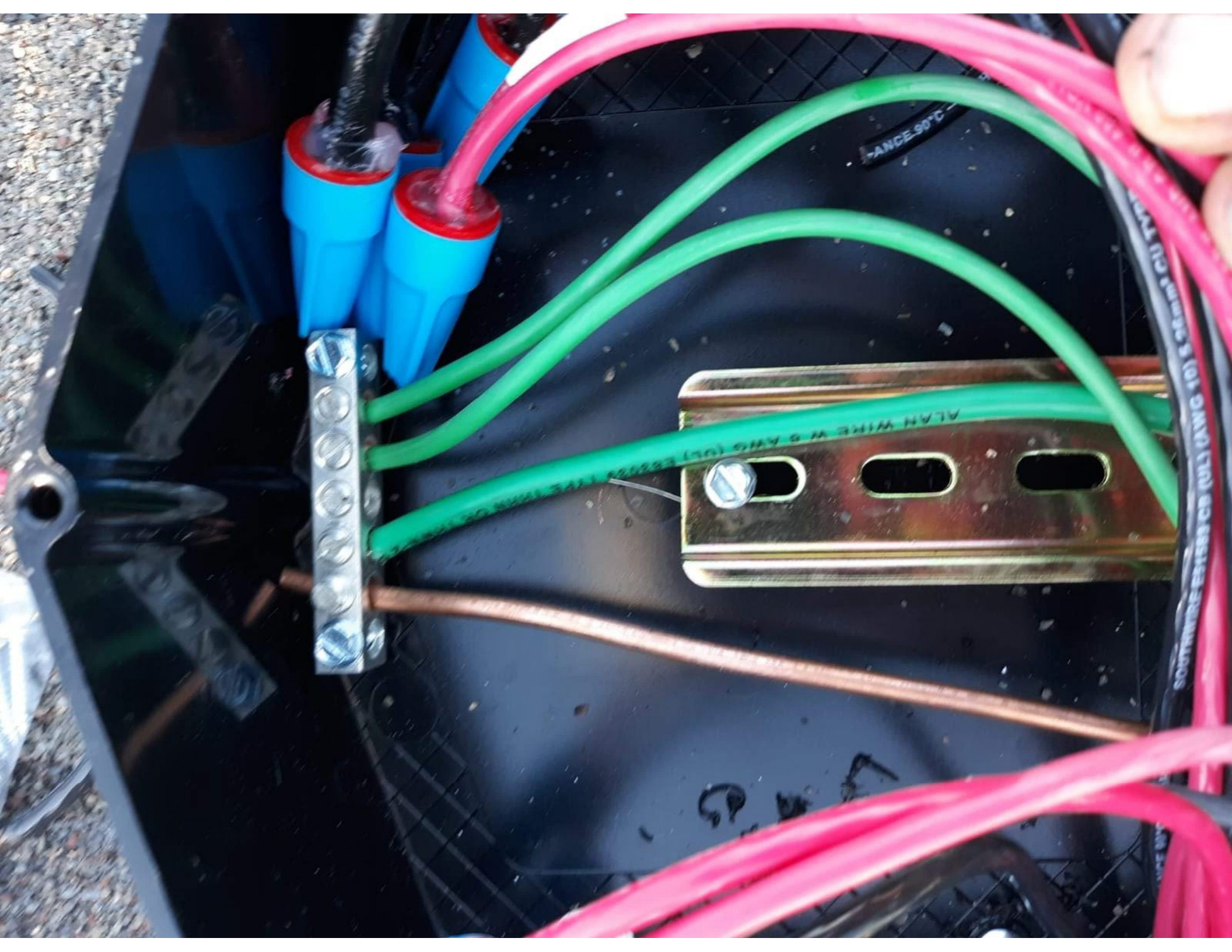
E497662

Ce module solaire produit une émission électrique lorsqu'il est exposé au soleil ou à une lumière artificielle. Il faut prendre les précautions appropriées pendant la manipulation et l'installation de ce produit.

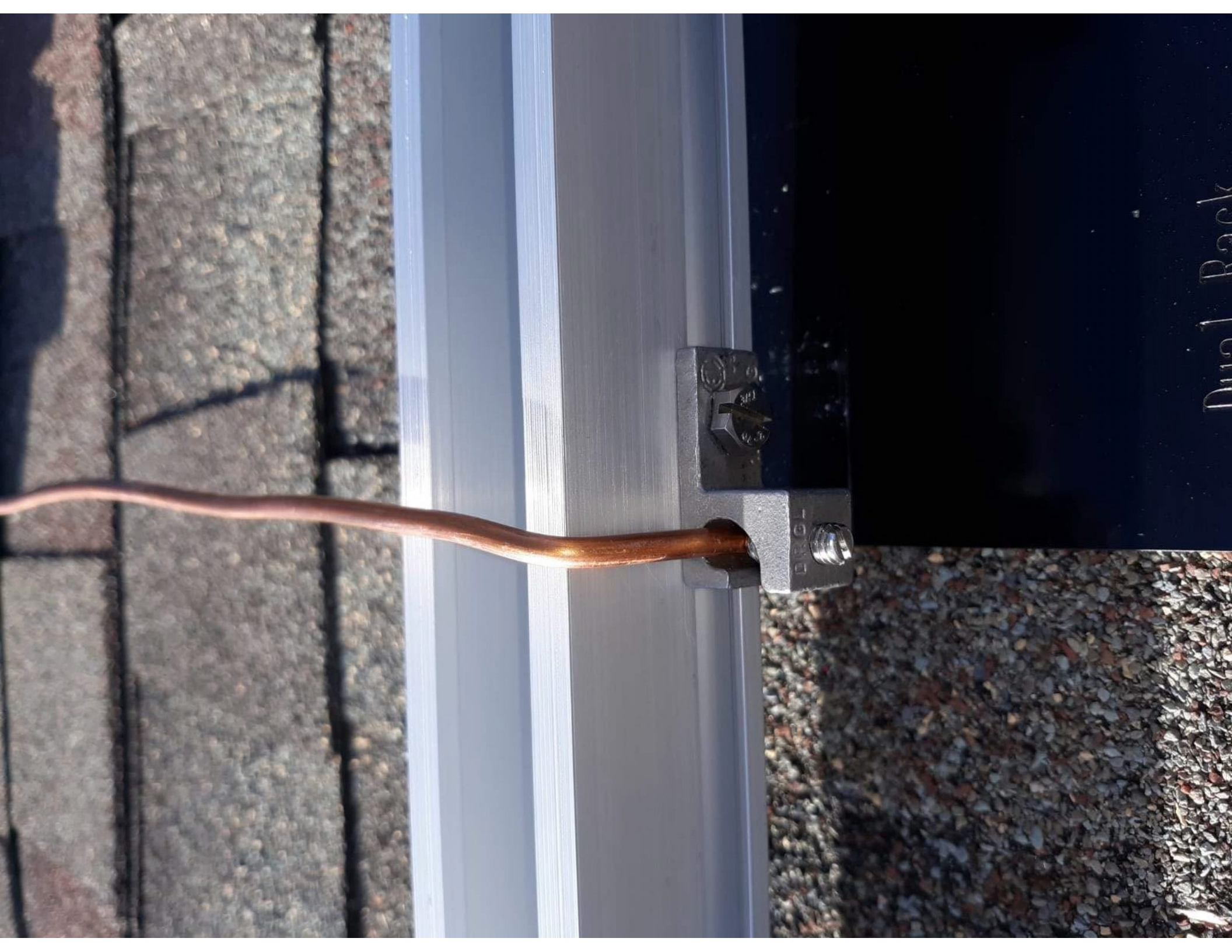
Made in Cambodia











Dual Back



A close-up photograph of a metal assembly. A black, rectangular plate with a ribbed top edge is mounted on a silver-colored metal beam. A silver-colored bolt is inserted through the plate, with a matching hexagonal nut tightened on top. The assembly is set against a dark, reflective background. In the bottom left corner, there is embossed text.

*Rack  
Flash L Kit 12" x 12"*











