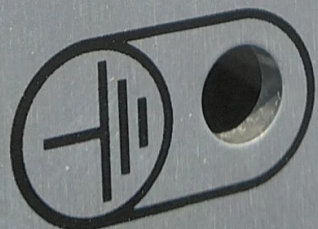


WIRE & CABLE

WIRE & CABLE

**CLOSURE MUST BE GROUNDED**  
REbus communication



PEEL  
RCP: 00010013D04D  
S/N: S2502-B9313  
MFG: B  
Date: Q4-21

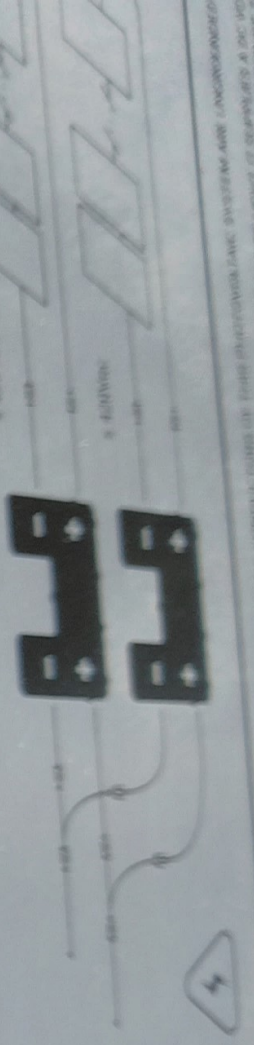
**GENERAC®** PV SnapRS™ PVRS



PVRSS Controlled Conductor Connection Point  
Refer to instructions for conditions of use

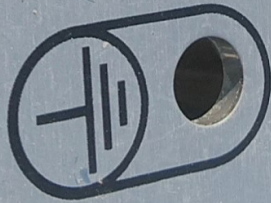
**REbus DC Nanogrid  
OUTPUT**

**IMPORTANT INSTALLATION INSTRUCTION**



**WARNING:** REBUS SYSTEMS ARE UNGROUNDING...  
**CAUTION:** RISK OF ELECTRIC SHOCK...  
REBUS SYSTEMS ARE UNGROUNDING...  
REBUS SYSTEMS ARE UNGROUNDING...

**ENCLOSURE MUST BE GROUNDED**  
for REbus communication



RCP: 00010013BCE7  
S/N: S2502-B4347  
MFG: B  
Date: Q4-21

PEEL



**GENERAC®** PVI  
SnapRS™ C  
PV rapid

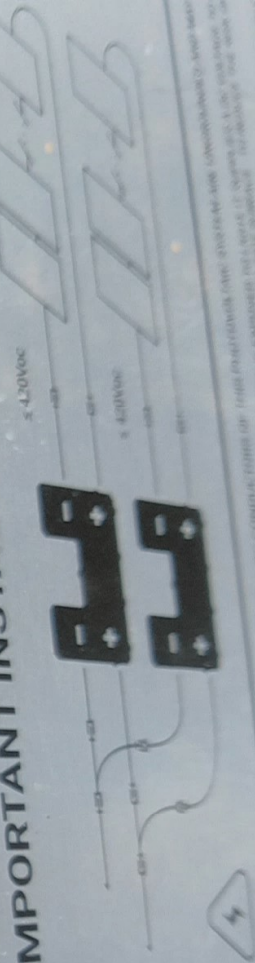
PVRSS Controlled Conductor Connection Port  
Refer to instructions for conditions of use



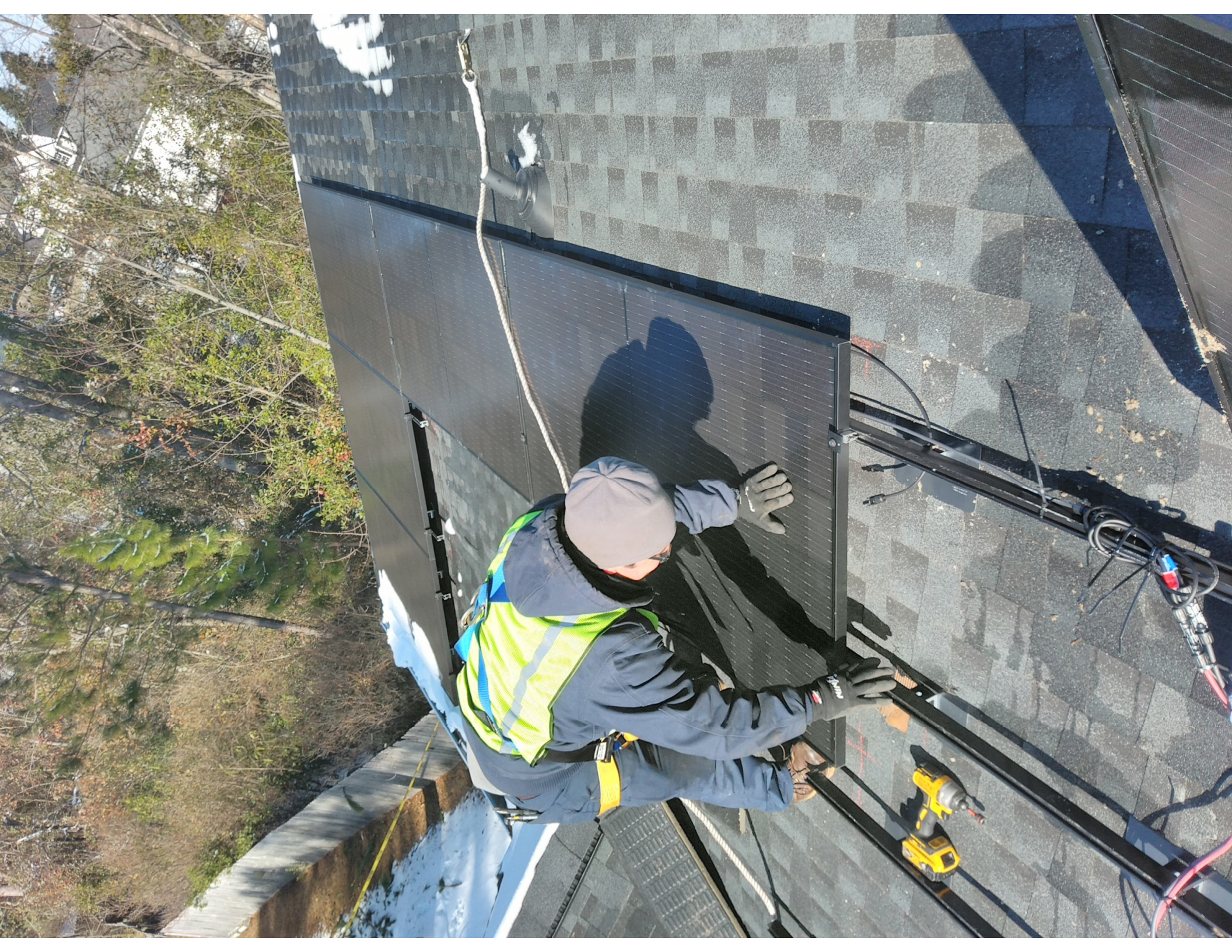
**REbus DC Nanogrid**  
OUTPUT



**IMPORTANT INSTALLATION INSTRUCTIONS:**



**WARNING:** USE THE PROPER WIRING FOR THE CONNECTION OF THIS PRODUCT AND ALWAYS USE CONDUCTORS OF THE CORRECT GAUGE.  
**CAUTION:** RISK OF ELECTRIC SHOCK. DO NOT TOUCH THE TERMINALS OR WIRING. ALWAYS USE THE CORRECT WIRING AND CONNECTIONS.  
**ATTENTION:** RISK OF ELECTRIC SHOCK. NE PAS TOUCHER LES TERMINAUX NI LE CÂBLAGE. TOUJOURS UTILISER LE CÂBLAGE ET LES BRANCHEMENTS D'ADÉQUATE GROSSEUR.







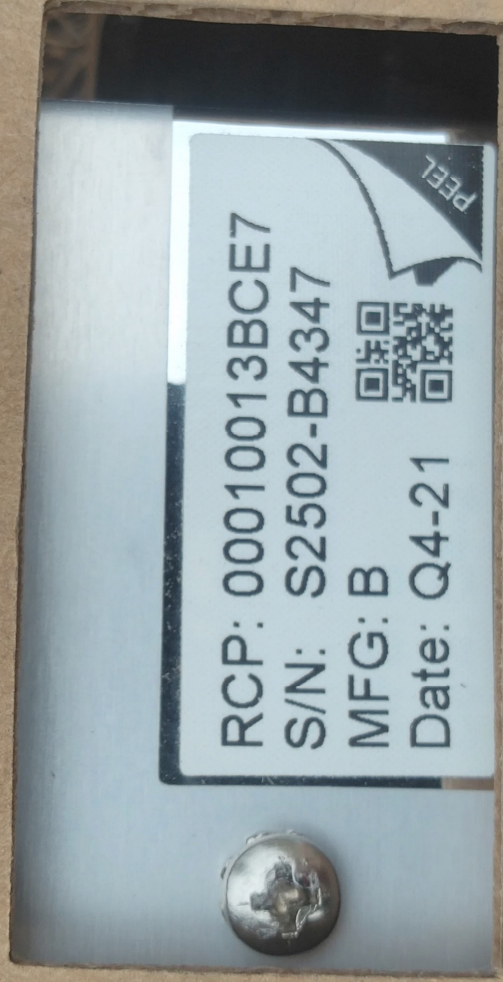








# SAVE THIS LABEL



**This label contains unique identifying information for this product and should be saved as part of a permanent installation record.**

**SAVE THIS LABEL**



**This label contains unique identifying information for this product and should be saved as part of a permanent installation record.**





CAUTION

CAUTION

CAUTION

CAUTION

CAUTION

CAUTION

CAUTION

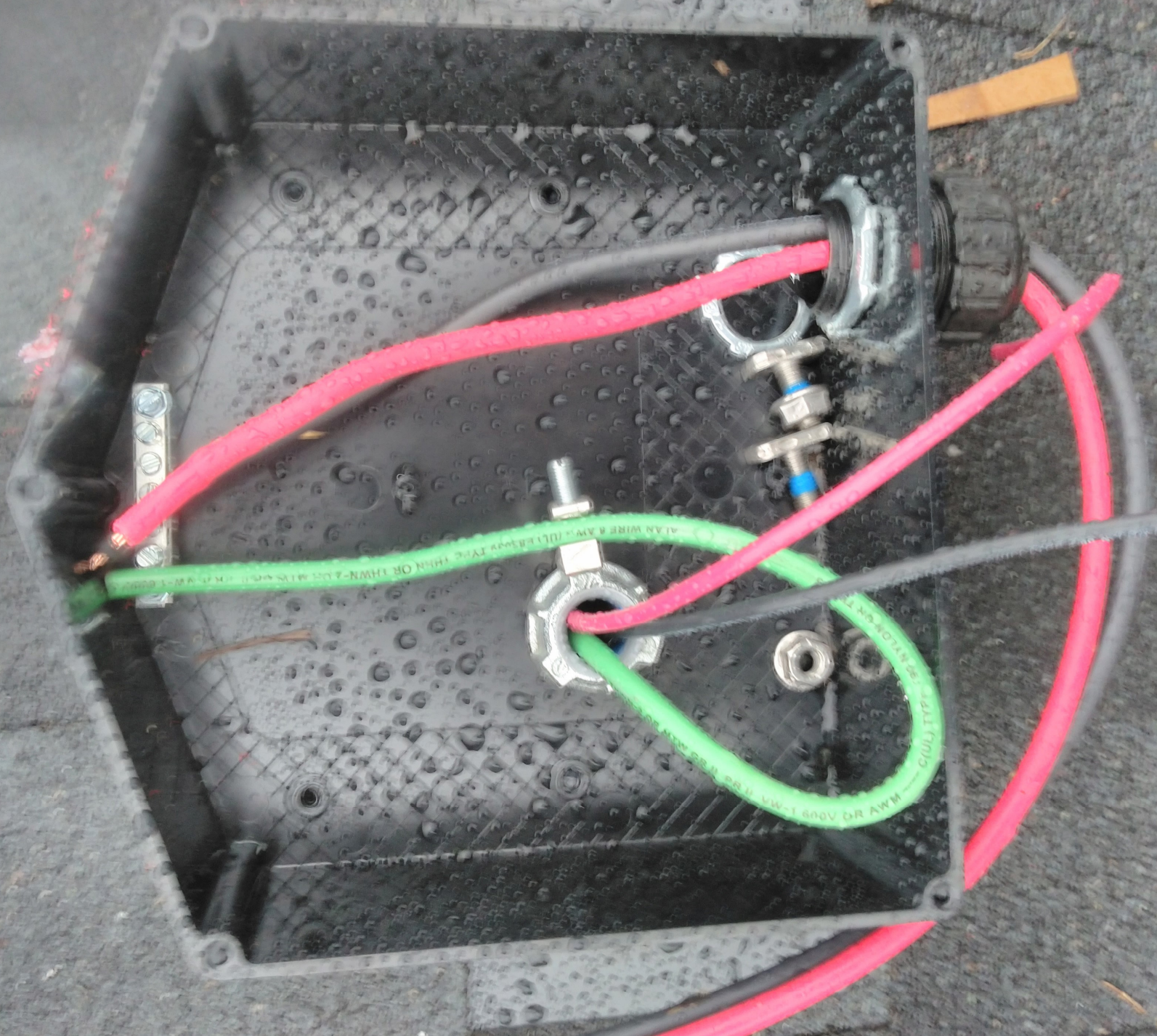
CAUTION

9-6

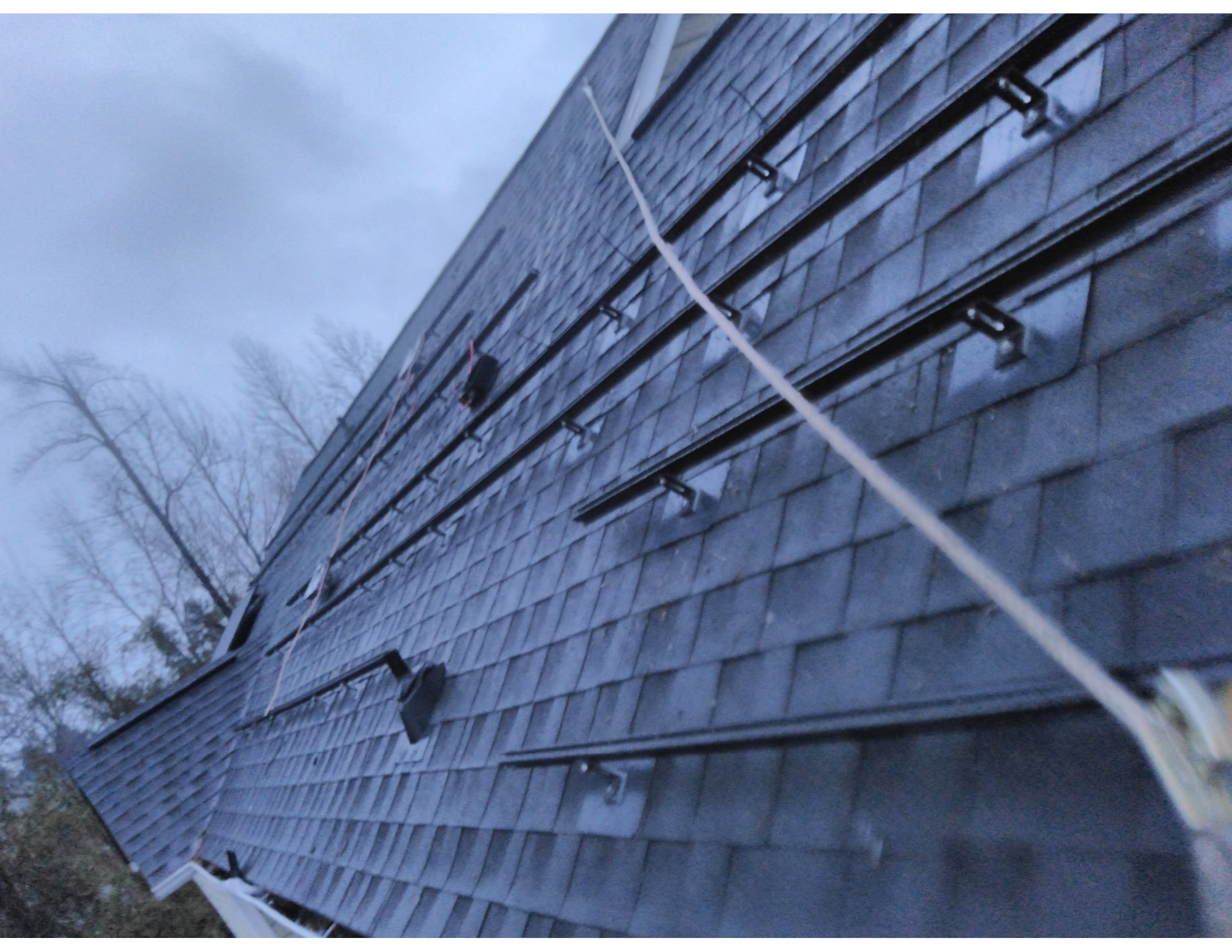


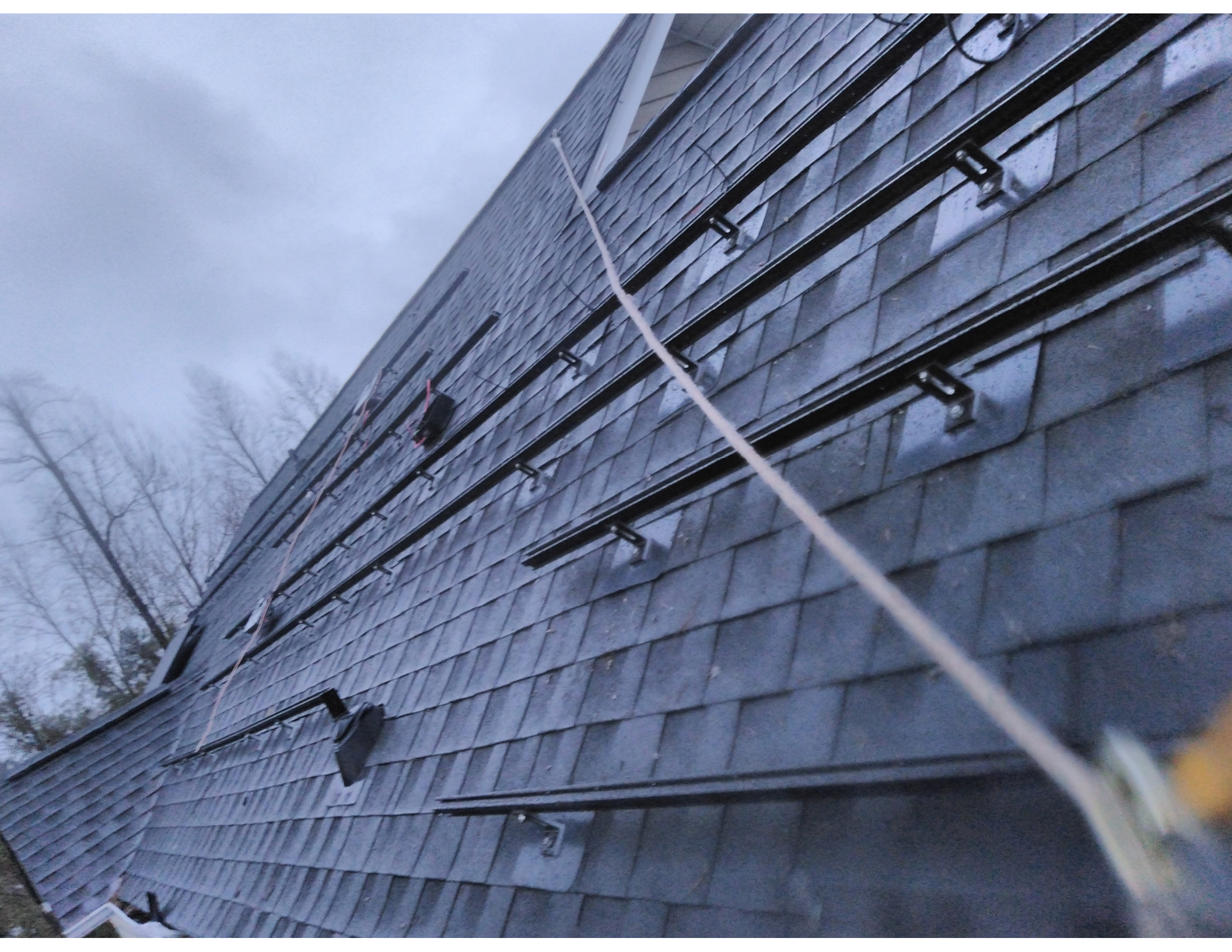






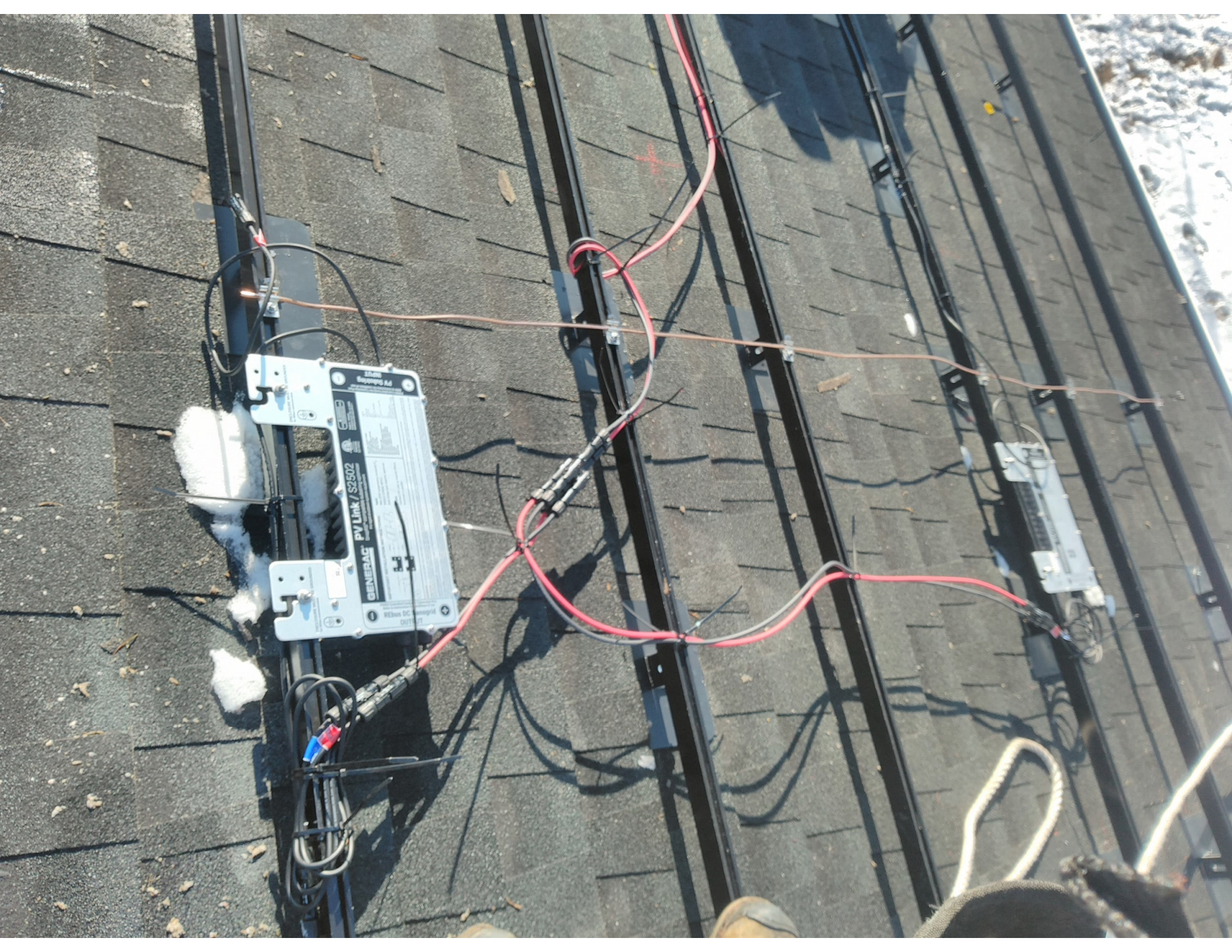














1000W  
Micro Inverter  
302