













REC Alpha Pure Series
REC400VA Pure

Serial Number: FBB-4008861844

Phone: +86-400-820-828
www.recgroup.com

Power Output (Max)

400 W

Wall Class Rating

0 + 0 W

Power Production Tolerance

+/- 3 %

Rated Voltage (Vrms)

42.1 V

Rated Current (Irms)

9.51 A

Open Circuit Voltage (Voc) (+/- 3%)

48.8 V

Short Circuit Current (Isc) (+/- 3%)

10.25 A

Maximum System Voltage (Vsys)

1000 V

Maximum Series Fuse (DC) (UL)

25 A

Maximum Series Fuse (DC) (IEC)

25 A

Design Load

+4000 / 2556 Pa

Maximum Test Load

+7000 / 4000 Pa

For detailed information, please refer to the technical manual and the user manual.



Compliance
UL Inc. ETL
Certified
UL File # E123456
- See the listing page 2



1000000
REC400VA

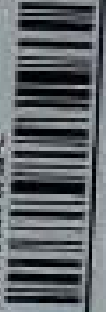


Appl. even Class: Safety Class: I
Manufactured: 10/07/2021

Warning Electrical Hazard This device is a Class II product. It is not a Class I product. It is not a Class II product. It is not a Class III product. It is not a Class IV product. It is not a Class V product. It is not a Class VI product. It is not a Class VII product. It is not a Class VIII product. It is not a Class IX product. It is not a Class X product. It is not a Class XI product. It is not a Class XII product. It is not a Class XIII product. It is not a Class XIV product. It is not a Class XV product. It is not a Class XVI product. It is not a Class XVII product. It is not a Class XVIII product. It is not a Class XIX product. It is not a Class XX product. It is not a Class XXI product. It is not a Class XXII product. It is not a Class XXIII product. It is not a Class XXIV product. It is not a Class XXV product. It is not a Class XXVI product. It is not a Class XXVII product. It is not a Class XXVIII product. It is not a Class XXIX product. It is not a Class XXX product.

Attention: Risque de choc électrique Ce produit est une classe II. Ce n'est pas une classe I. Ce n'est pas une classe II. Ce n'est pas une classe III. Ce n'est pas une classe IV. Ce n'est pas une classe V. Ce n'est pas une classe VI. Ce n'est pas une classe VII. Ce n'est pas une classe VIII. Ce n'est pas une classe IX. Ce n'est pas une classe X. Ce n'est pas une classe XI. Ce n'est pas une classe XII. Ce n'est pas une classe XIII. Ce n'est pas une classe XIV. Ce n'est pas une classe XV. Ce n'est pas une classe XVI. Ce n'est pas une classe XVII. Ce n'est pas une classe XVIII. Ce n'est pas une classe XIX. Ce n'est pas une classe XX. Ce n'est pas une classe XXI. Ce n'est pas une classe XXII. Ce n'est pas une classe XXIII. Ce n'est pas une classe XXIV. Ce n'est pas une classe XXV. Ce n'est pas une classe XXVI. Ce n'est pas une classe XXVII. Ce n'est pas une classe XXVIII. Ce n'est pas une classe XXIX. Ce n'est pas une classe XXX.

CAUTION: DO NOT DISCONNECT UNDER LOAD!
ATTENTION: NE PAS DECONNECTER SOUS TENSION!
WARNING: RISK OF ELECTRIC SHOCK



IQ Combiner 3 ES

Photovoltaic Combiner Box X-IQ-AM1-240-3-ES

Electrical ratings

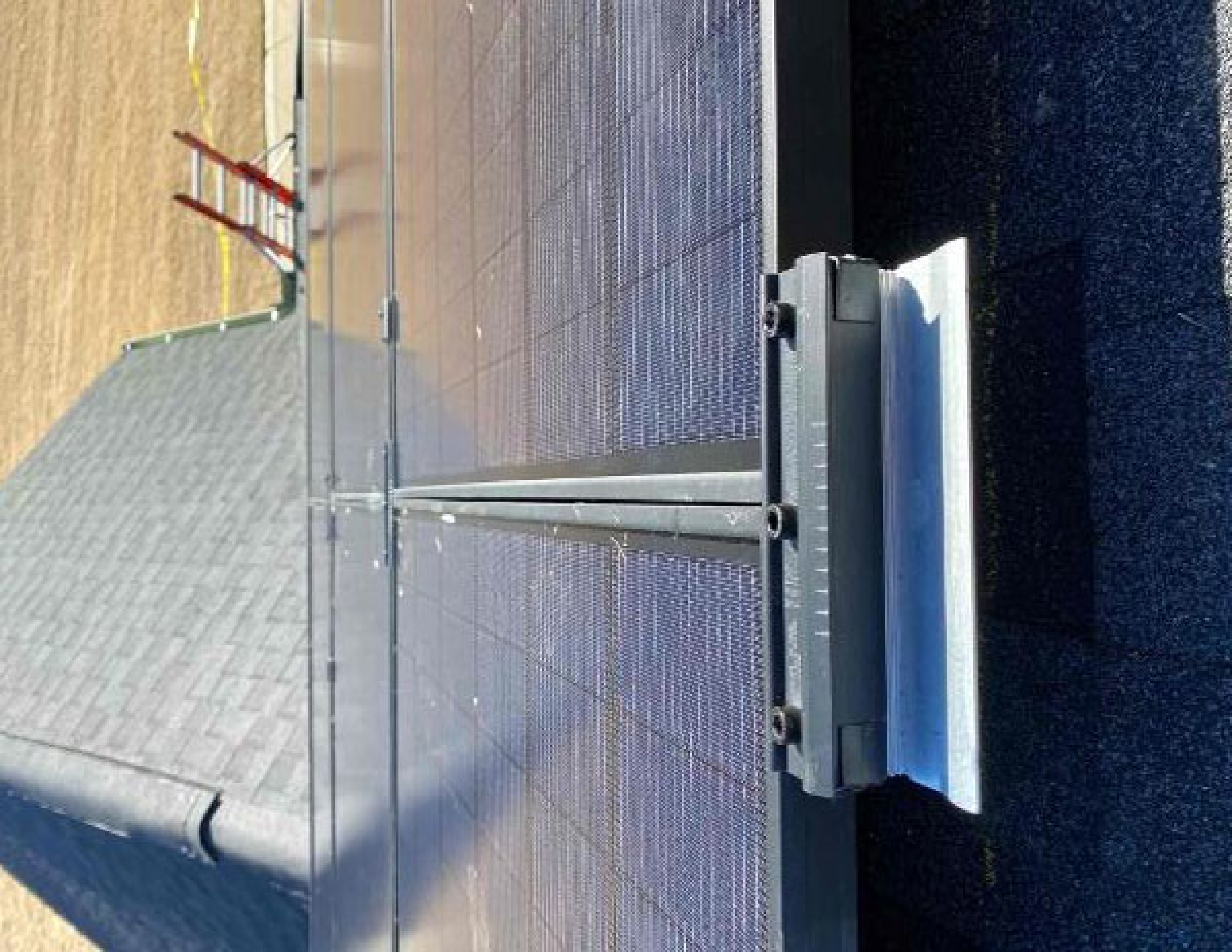
Voltage 240VAC, 60Hz
DG Breakers 80A MAX (combined)
DG Inputs 64A MAX (combined)
Output 65A MAX, 90A MAX
Temperature 46°C MAX ambient
Use only Eaton BR series Breakers (

S/N:

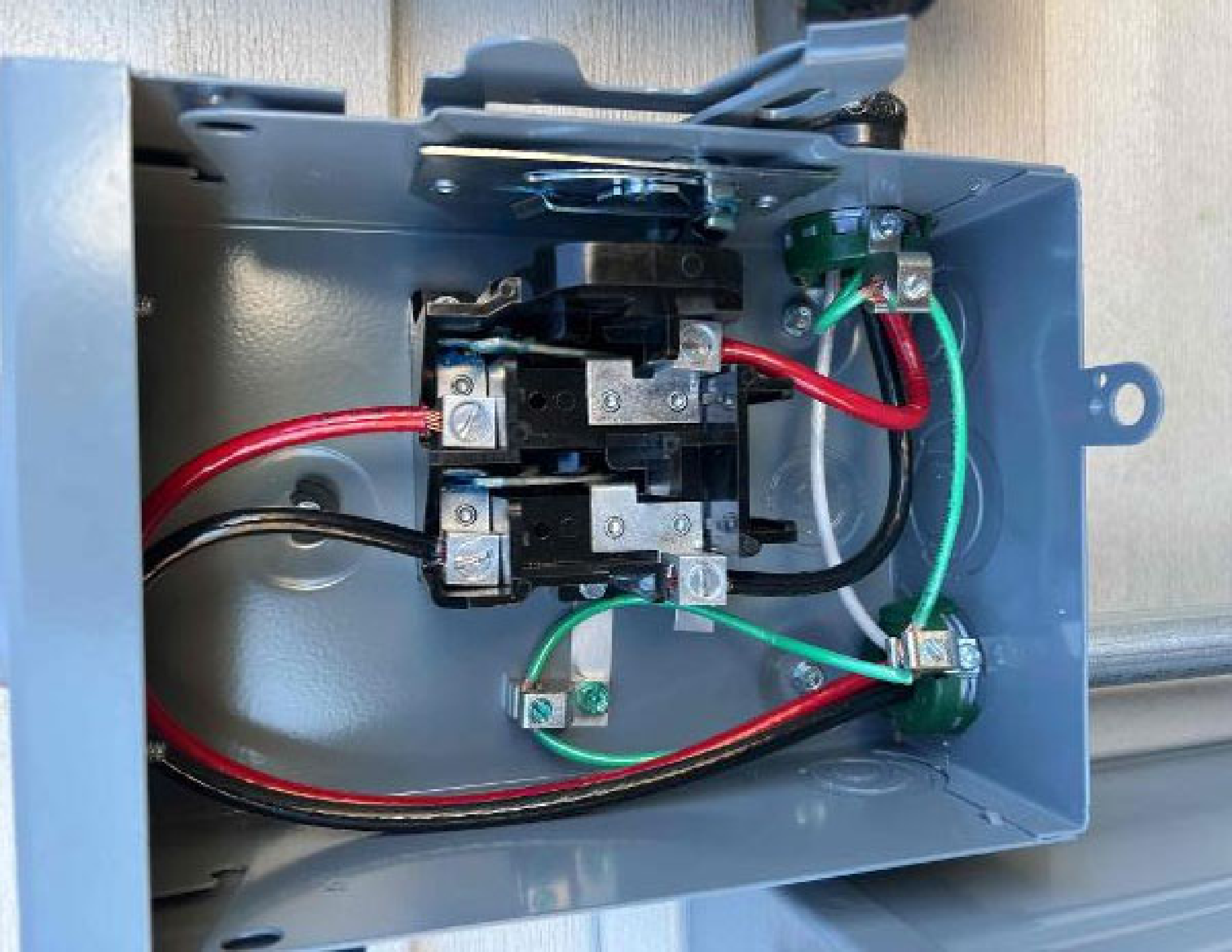
XXXXXXXXXXXX
202138074906

**Dedicated solar and DG Combiner Boxes
Require a Dedicated
Emergency Disconnect Breaker
Emergency Breaker not used for backfeed**

Connection	V	A
DG Breaker	1	1
60A Circuit Breaker only	4	4
Neutral and ground		
Large screw	14	6
Small screw		
Main lug	1	3
Copper conductors		













BLUE RAVEN
WOODWORK

MADE IN THE USA
Blue Raven Woodwork is a family-owned and operated business. We are committed to providing the highest quality products and customer service. Our products are made from the finest materials and are built to last. We are proud to be a part of the American wood industry.



MADE IN THE USA
CERTIFIED
100% AMERICAN
WOODWORK

Blue Raven
Woodwork
100% American
Woodwork

CUSTOMER INFORMATION:
Blue Raven
Woodwork
100% American
Woodwork

Blue Raven
Woodwork
100% American
Woodwork

Blue Raven
Woodwork
100% American
Woodwork

Blue Raven
Woodwork
100% American
Woodwork

Blue Raven
Woodwork
100% American
Woodwork

Blue Raven
Woodwork
100% American
Woodwork

Blue Raven
Woodwork
100% American
Woodwork

Blue Raven
Woodwork
100% American
Woodwork







BLUE RAVEN

Job Hazard Analysis

CUSTOMER NAME: Shawn Morris

INSTALLATION DATE: 1-11-21

ADDRESS: 5515 Coleridge Rd. Fagway-Varina, NC 27526

HAZARD CATEGORY	POTENTIAL HAZARDS	HAZARD CONTROLS
Ladder Safety	<ul style="list-style-type: none"> • Dependent • Defect/Failure • Electrocuttion 	ladder 3ft+ above eave and horns
Fall Protection	<ul style="list-style-type: none"> • Fall from 2' or greater 	proper anchors and harness of ropes
Electrical Safety	<ul style="list-style-type: none"> • Electrocuttion • ARC Flash 	wear PPE
Heat & Related Issues	<ul style="list-style-type: none"> • High Heat - 85° to 89° • Extreme Heat - 100° or higher 	Take break when need to and stay hydrated.
Public Protection	<ul style="list-style-type: none"> • Falling object • Slip/Trip/Fall 	Conatin tape around site and cones
NEAREST HOSPITAL:	Central Harnett Hospital 215 Brightwater Dr Lillington, NC 27546	
SAFETY CONTACT:	Henry Mull: 828 - 896-5514	
Additional Notes		
Falling Objects	Falls	
Slips	Cuts	
Trips	Weather Conditions	
Crew Members		
	Name	Signature
1	Teddy Edmonds	Teddy Edmonds
2	Josh Williams	Josh Williams
3	Drew Russell	Drew Russell
4		
5		
6		

Devin J. Brown

Crew Lead (print)

[Signature]
Crew Lead (signature)

⚠ WARNING

ELECTRIC SHOCK HAZARD
TERMINALS ON THE LINE AND
LOAD SIDES MAY BE ENERGIZED
IN THE OPEN POSITION

PHOTOVOLTAIC SYSTEM
⚠ AC DISCONNECT ⚠

RATED AC OUTPUT CURRENT **35.00 A**
NOMINAL OPERATING AC VOLTAGE **240 V**

⚠ WARNING

THIS EQUIPMENT FED BY MULTIPLE
SOURCES. TOTAL RATING OF ALL
OVERCURRENT DEVICES, EXCLUDING
MAIN SUPPLY OVERCURRENT
DEVICE, SHALL NOT EXCEED
AMPACITY OF BUSBAR.

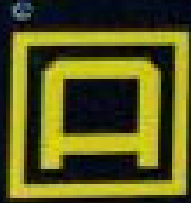
⚠ WARNING

MAIN DISTRIBUTION UTILITY DISCONNECTS
POWER TO THIS BUILDING IS ALSO SUPPLIED
FROM A ROOF MOUNTED SOLAR ARRAY WITH A
Rapid Shutdown Disconnect Means
GROUNDING AND LABELLED WITHIN LINE OF SITE
AND 10 FT OF THIS LOCATION.

⚠ WARNING

PHOTOVOLTAIC SYSTEM
COMBINER PANEL
DO NOT ADD LOADS





SQUARE D®

GENERAL DUTY
SAFETY SWITCH
INTERRUPTOR DE
SEGURIDAD DE
SERVICIO GENERAL

50 A
240 Vac / V~



⚠ DANGER / PELIGRO

**HAZARD OF ELECTRIC SHOCK, EXPLOSION, OR ARC FLASH
PELIGRO DE DESCARGA ELÉCTRICA, EXPLOSIÓN O
DESTELLO POR ARQUEO**

• Apply appropriate personal protective equipment (PPE) and follow safe electrical work practices. See NFPA 70E.

• This equipment must only be installed and used in accordance with the instructions provided.

• Never operate energized conductors with your feet. Keep feet grounded.

• Turn off switch before servicing or installing fuses or making loads to connections.

• Always use a properly rated voltage sensitive device in all live and dead line work to test for voltage in all phases.

• Utilice equipo de protección personal (EPP) apropiado y siga las prácticas de seguridad eléctrica establecidas para su compañía. Consulte la norma NFPA 70E.

• Conecte el personal eléctrico apropiado cuando instale y opere el equipo. Siga siempre las prácticas de seguridad eléctrica establecidas por su compañía.

• No toque ni opere el interruptor con la planta de los pies. Mantenga los pies bien aterrados.

• Cierre el interruptor antes de conectar o instalar fusibles o de hacer conexiones en el lado de carga.

• Siempre utilice un dispositivo de prueba de tensión sensible en todas las fases, tanto en líneas energizadas como en líneas sin energía, para verificar la ausencia de voltaje en todas las fases.

⚠ WARNING
POWER TO THIS BUILDING IS ALSO
SUPPLIED FROM MAIN DISTRIBUTION
UTILITY DISCONNECT LOCATED
Bottom Left

⚠ WARNING

ELECTRIC SHOCK HAZARD
TERMINALS ON THE LINE AND
LOAD SIDES MAY BE ENERGIZED
IN THE OPEN POSITION

⚠ AC DISCONNECT
PHOTOVOLTAIC SYSTEM

RATED AC OUTPUT CURRENT 33.66 A
NOMINAL OPERATING AC VOLTAGE 240 V

**RAPID SHUTDOWN
SWITCH FOR
SOLAR PV SYSTEM**

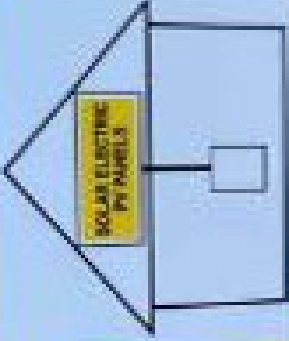
⚠ WARNING

ELECTRIC SHOCK HAZARD

TERMINALS ON THE LINE AND
LOAD SIDES MAY BE ENERGIZED
IN THE OPEN POSITION

**SOLAR PV SYSTEM EQUIPPED
WITH RAPID SHUTDOWN**

TURN RAPID SHUTDOWN
SWITCH TO THE
"OFF" POSITION TO
SHUT DOWN PV SYSTEM
AND REDUCE
SHOCK HAZARD
IN THE ARRAY



PHOTOVOLTAIC SYSTEM

⚠ AC DISCONNECT ⚠

RATED AC OUTPUT CURRENT 20.00 A

NOMINAL OPERATING AC VOLTAGE 240 V

⚠ WARNING

DUAL POWER SUPPLY

SOURCES: UTILITY GRID AND
PV SOLAR ELECTRIC SYSTEM

⚠ WARNING

INVERTER OUTPUT CONNECTION

DO NOT RELOCATE
THIS OVERCURRENT
DEVICE

⚠ WARNING

POWER TO THIS BUILDING MAY BE KEPT
ON WITH ACDC AC OUTPUT SOLAR SYSTEM. YOUR
ARRAY WIRING SUBSYSTEM CONNECTIONS
MAY BE KEPT ON WITH THIS INVERTER

MEG APPROVED

FOR FIELD-COMPLIANT LABELS

00141-001-0000-0001



5105









G PHOTOVOLTAIC
ER SOURCE

WARNING: PHOTOVOLTAIC
POWER SOURCE



IG: PHOTOVOLTAIC
ENER SOURCE





A photograph showing a wooden structure, likely a roof or ceiling, with a photovoltaic cable. The cable is orange and blue, and is secured to a wooden beam with a red label. The label has white text that reads "PHOTOVOLTAIC" and "ER SOURCE". The background consists of wooden joists and sheathing.

PHOTOVOLTAIC
ER SOURCE









Green Cells
5575 Colostony Rd
Elect Device Brown





482147014015

EMBOLE
482147014472

EMBOLE
482147014228

EMBOLE
482147013995

EMBOLE
482147014432

EMBOLE
482147014631

EMBOLE
482147012443

EMBOLE
482147014015

APZ

[Handwritten signature]

new System!
ni virtus array in English's Army Bull-
"Añadir nuevo sistema"
a crear in conjunto del planeta.

Embole Serial Number Label /
Número da série do Embole

Embole Customer Slip

To Shear y A la hoja de





021

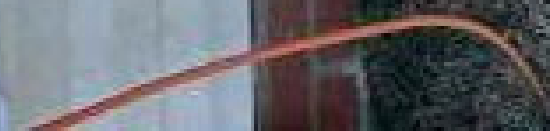
840-00388-14
250VAC 20A
+79°C 2103



01
02

021





10/2 G NM-B

INDOOR WIRE
UL LISTED
ELECTRICAL



250 FT
76.20 M



10/2 G NM-B

INDOOR WIRE
UL LISTED
ELECTRICAL



250 FT
76.20 M



10/2 G NM-B

INDOOR WIRE
UL LISTED
ELECTRICAL



250 FT
76.20 M



10/2 G NM-B

ENCORE WIRE
MADE IN THE USA

ENCORE WIRE
MADE IN THE USA



UMIRAC SFM INFINITY RACKING

FOR MOUNTING AND DISTRIBUTION SOLAR STRIPS

UMIRAC, INC. 2017

® UNIRAC



FLASHKIT SFM SLIDER S

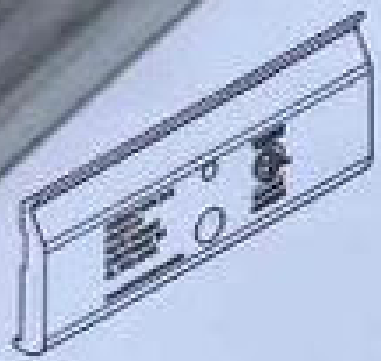
00427 1D

FLASHKIT SFM SLIDER S COMP DIX
DARK Pack Size: 10
Factory Code: 3-1



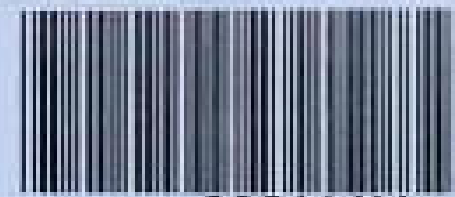
WOPOL 884023-01 Manufacturer Part: 32921-42921





UNIRAC
BETTER SOLAR STARTS HERE

www.unirac.com



008114M
MLPE MOUNT ASSY
Pack Size - 10

WG/PO# 0044057-00
Manufacture date: 05/2021
Factory Code: 025A

California Proposition 65 - **WARNING:** Cancer and
Reproductive Harm - www.P65Warnings.ca.gov

 **UNIRAC**[®]

BETTER SOLAR STARTS HERE

www.unirac.com



250111U

SFM UNIV TRIMRAIL CLIP DARK

Pack Size - 10

WO/PO# 0044134-02

Manufacture date: 05/2021

Factory Code: 018A

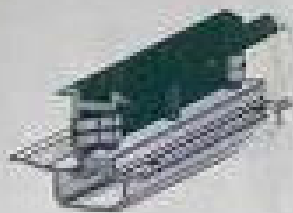


8 10039136339 3

California Proposition 65  WARNING: Cancer and
Reproductive Harm - www.p65warnings.ca.gov

 **UNIRAC**
BETTER SOLAR STARTS HERE

www.unirac.com



253010U

SFM SPLICE 6.5"

Pack Size: 10

WO/PO# : 0043974-00

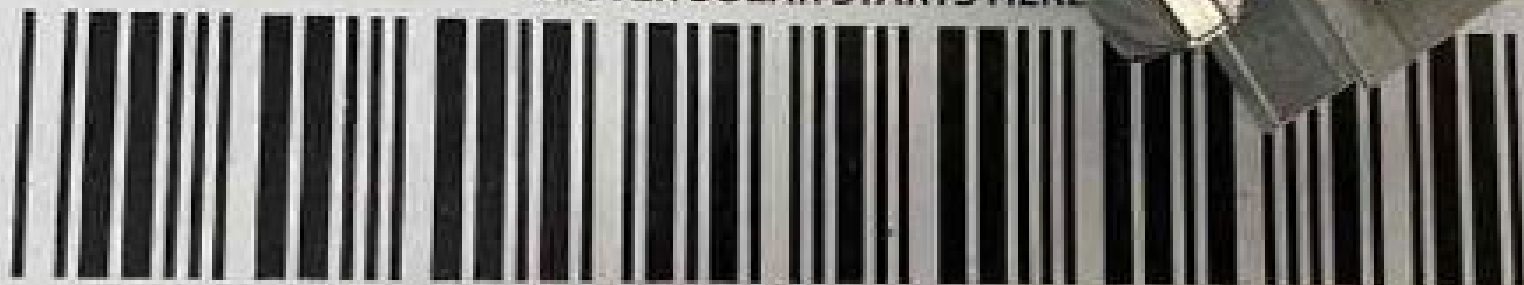
Manufacture date: APR 2021

Factory Code : 010A



810039363379

 **UNIRAC**
BETTER SOLAR STARTS HERE



SFM TRIM BONDING CLAMP 008100U

UPC Code




8 10039 36104 7

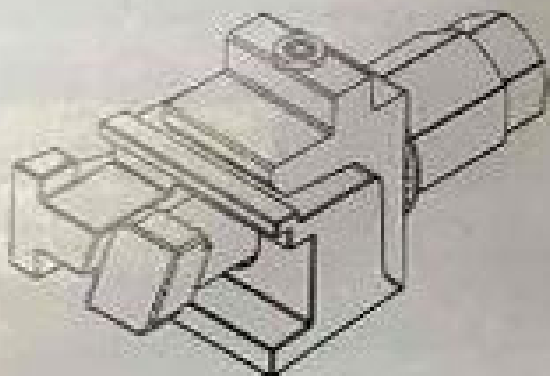
Pack Size: 10

Assembly Date:

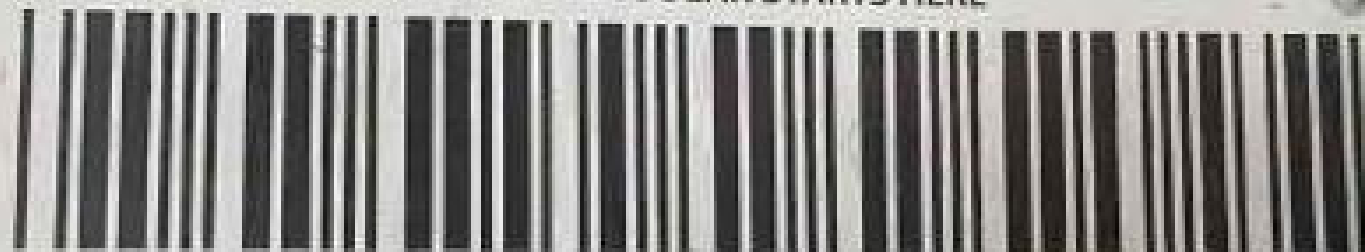
12/10/20-01/10/21

PO#0043552-00

California Proposition 65  WARNING: Cancer and Reproductive Harm-- www.P65Warnings.ca.gov

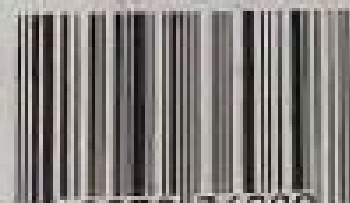


 **UNIRAC**[®]
BETTER SOLAR STARTS HERE



SFM N/S BONDING CLAMP 008000U

UPC Code

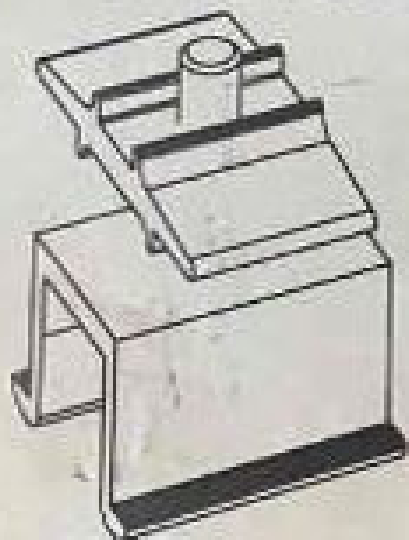



8 10039 36089 7

Pack Size: 20

Assembly Date:
12/10/20-01/10/21

PO#0043552-00



California Proposition 65  WARNING: Cancer and
Reproductive Harm-- www.P65Warnings.ca.gov





ILSCO SGB-4
CONDUCTIVE SURFACE FINISH



LISTED
800P



14 (100)

Assembled in Mexico

LAY-IN GROUND LUG
STAINLESS STEEL SCREWS
WIRE RANGE: 4 - 14
1/4" MAX FRAME THICKNESS
ILSCO SOLARE
PATENT NO. D749,846.3

WARNING: Cancer and reproductive harm. www.p65warnings.ca.gov

08/2021

QTY
50



ILSCO SOLARE
1000 W. 10th St. #100
San Jose, CA 95128

Panel Ground

U I IRAC



01120311

SALE 10/09/2012 08:44

14 Dec 12

UNIQUE ID: 707100

Manufacturer / Item: 75406-7001

Barcode

81100

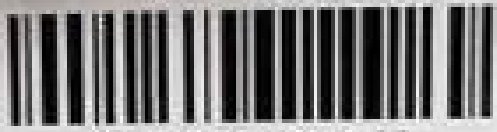




UNIRAC

BETTER SOLAR STARTS HERE

www.unirac.com



253020U

SFM MICRORAIL 2'

Pack Size: 10

WO/PO# : 0044373-00

Manufacture date: APR 2021

Factory Code : 010A

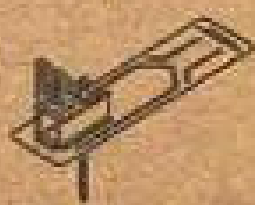


810039363409



FLASHKIT SFM TRIM S

004201D



FLASHKIT SFM TRIM S COMP DARK
Pack Size 10

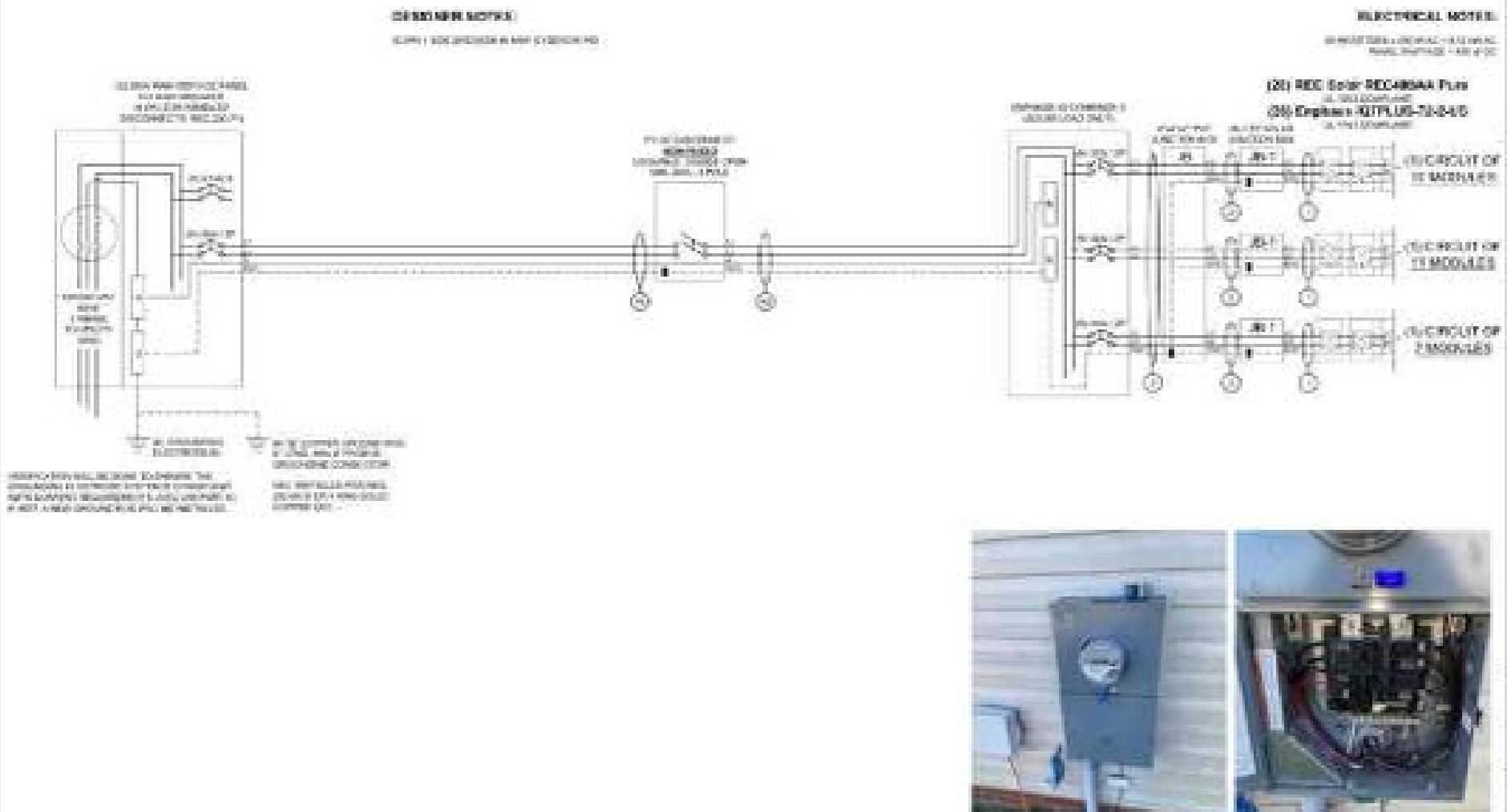
UPC Code



10039 06211

Assembly Date:
1/10/21-2/10/21
WD/PO# 0043676-00

15	1. 100% PHOTOGRAPHY OF THE WORK AREA 2. 100% PHOTOGRAPHY OF THE WORK AREA 3. 100% PHOTOGRAPHY OF THE WORK AREA 4. 100% PHOTOGRAPHY OF THE WORK AREA	100% PHOTOGRAPHY OF THE WORK AREA	100% PHOTOGRAPHY OF THE WORK AREA	100% PHOTOGRAPHY OF THE WORK AREA	100% PHOTOGRAPHY OF THE WORK AREA
----	--	-----------------------------------	-----------------------------------	-----------------------------------	-----------------------------------



UTILITY COMPANY: Duke Energy NC PERMIT ISSUER: Harnett County

BLUE RAVEN

100% PHOTOGRAPHY OF THE WORK AREA
 100% PHOTOGRAPHY OF THE WORK AREA
 100% PHOTOGRAPHY OF THE WORK AREA
 100% PHOTOGRAPHY OF THE WORK AREA

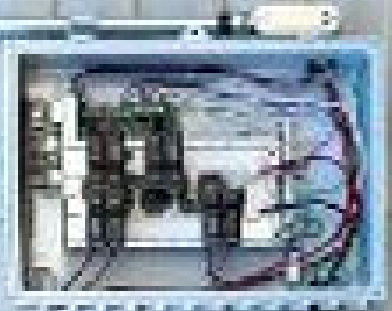
NABCEP CERTIFIED
 PV INSTALLATION PROFESSIONAL
 Shawn Morris
 705-438-6700

CUSTOMER INFORMATION:
 Shawn Morris
 6616 Coleridge Road
 Fuquay-Varina, North Carolina 27026
 DC SYSTEM SIZE: 2.0 kW

Enphase Energy
 November 16, 2021
 428246
 ELECTRICAL
 0 PV









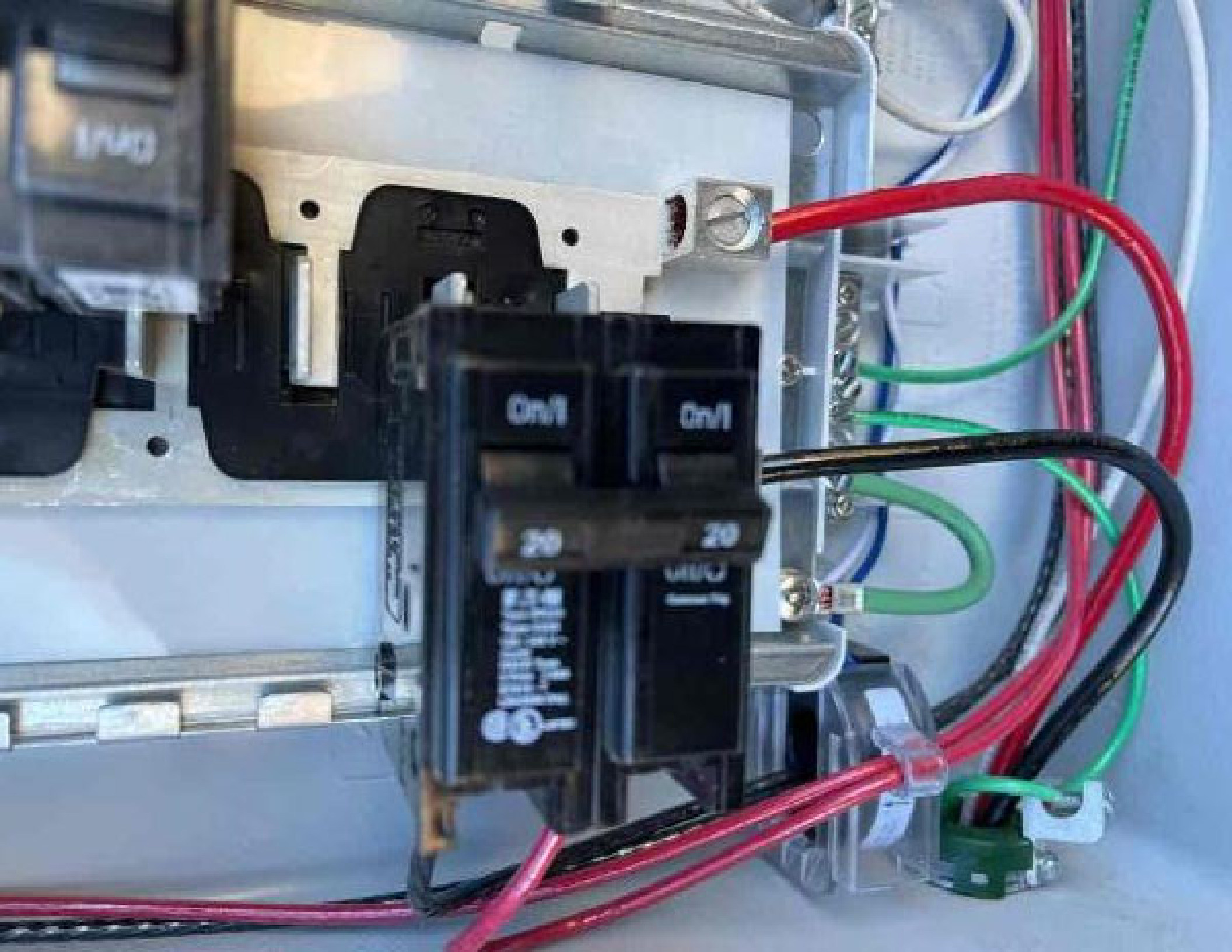


WARNING
ELECTRIC SHOCK
Hazard
Do not touch
when power is
applied

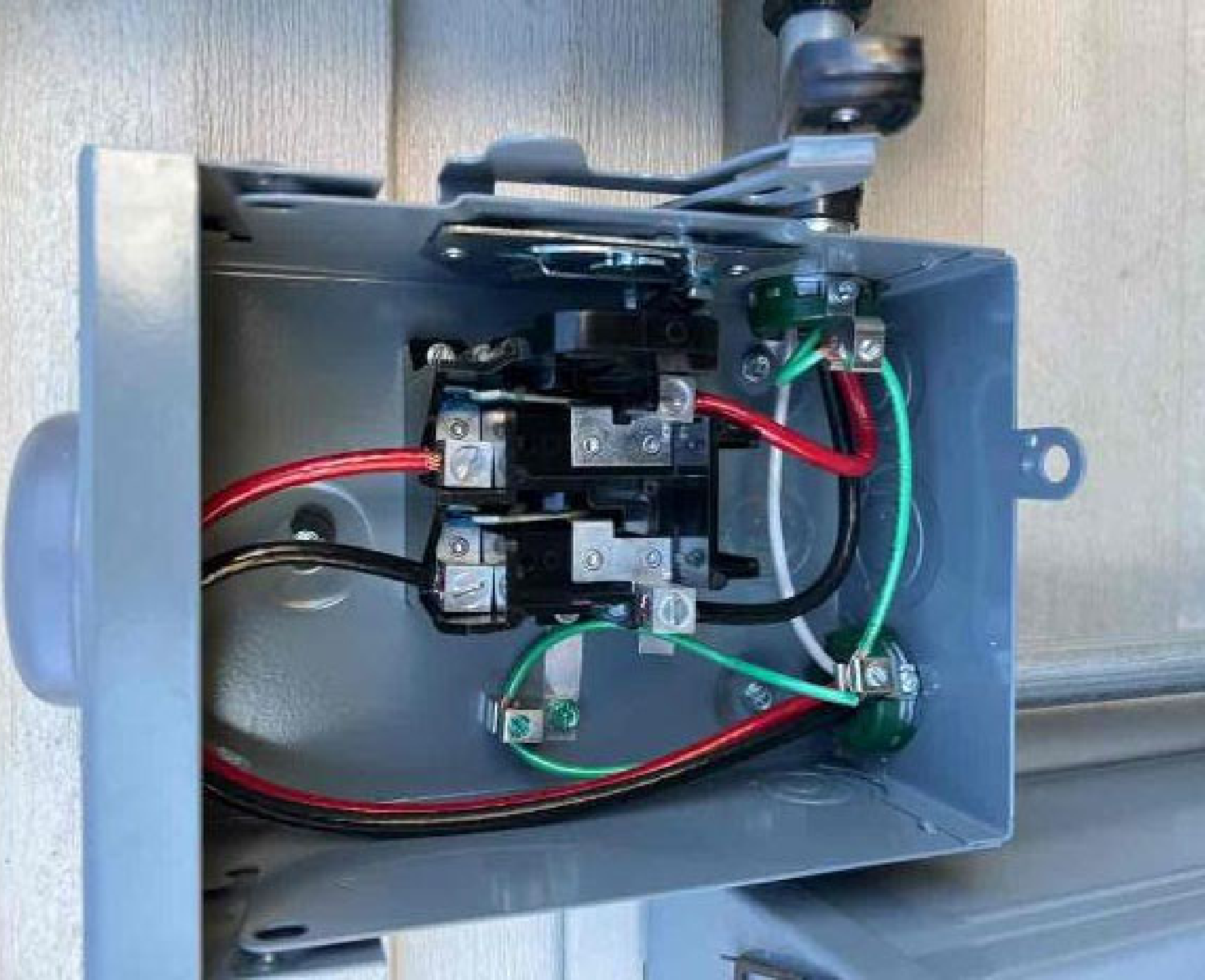
12V

12V



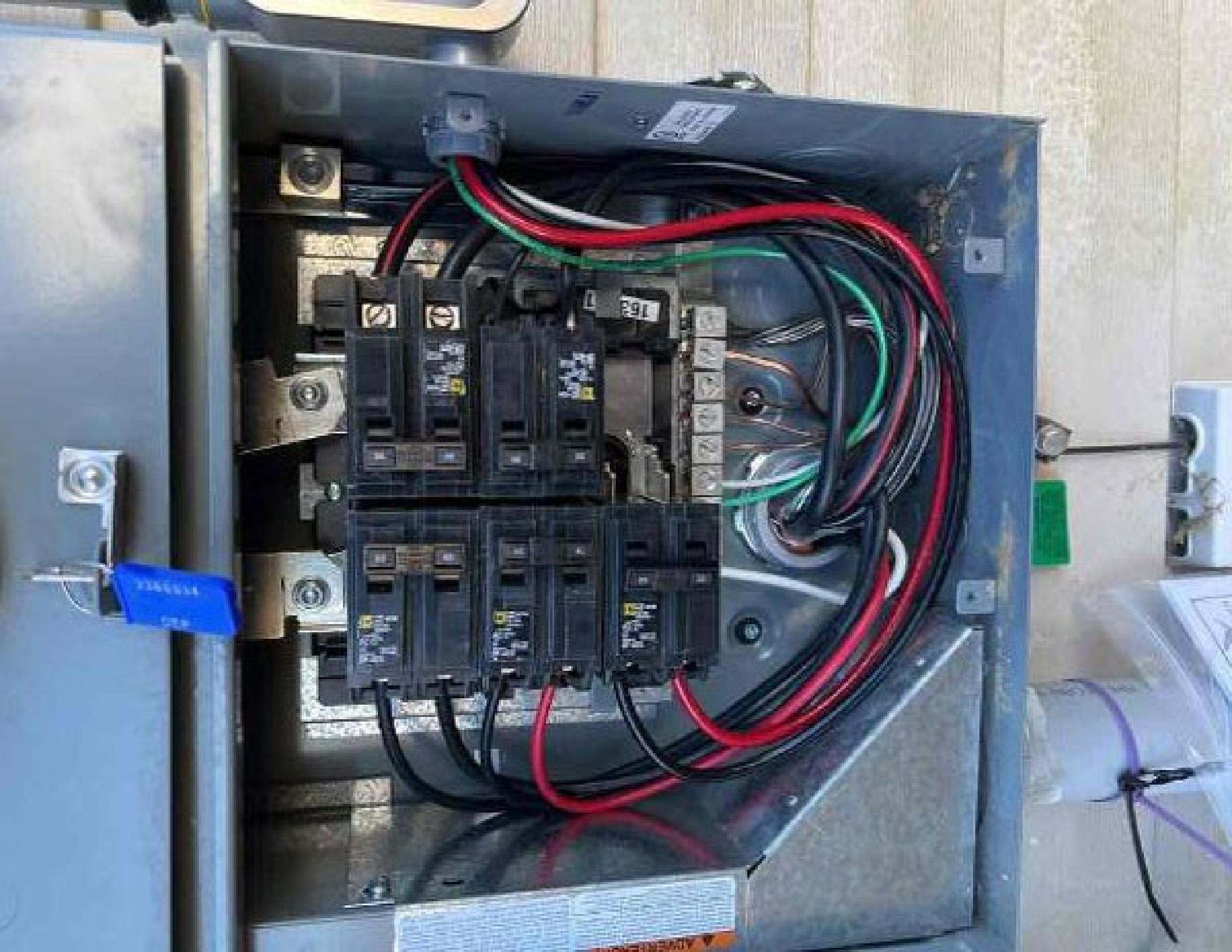


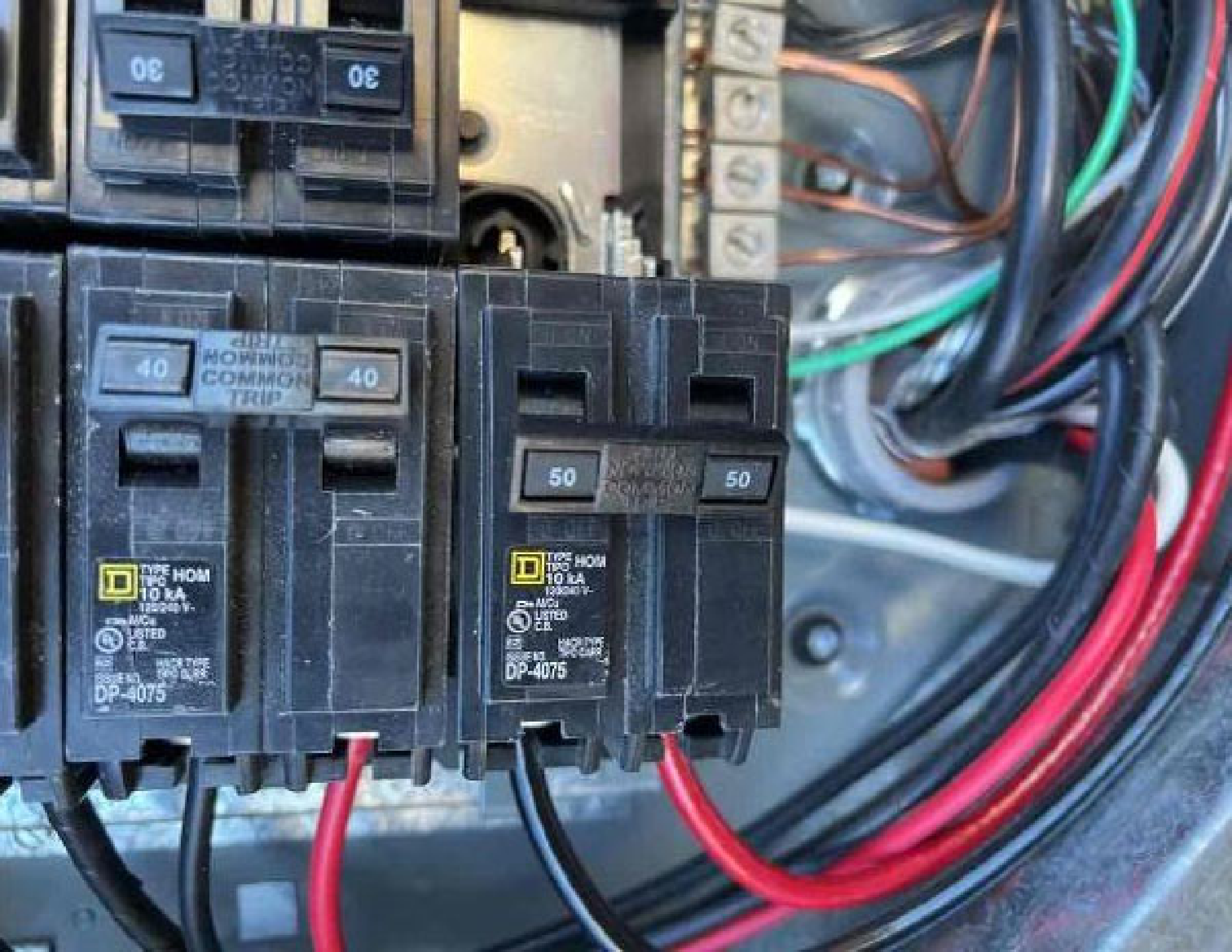












30

30

40

40/50
COMMON
TRIP

40

50

50

 TYPE HOM
TRIP
10 kA
120/240 V

UL LISTED
E.C.

DP-4075

 TYPE HOM
TRIP
10 kA
120/240 V

UL LISTED
E.C.

DP-4075







Microinverters & Array

- ✓ Scanned : 28/28
- ✓ Detected : 28/28
- ✓ Communicating : 28/28
- ✓ Array created : 2
- 🟡 Array assigned : 0
- ✓ Producing power : 28/28

🟡 Profile set : 7/28 (IEEE 1547:2018 PJM v2 2019Q4:1.2.7)

(Please wait for grid profiles to propagate to all microinverters)



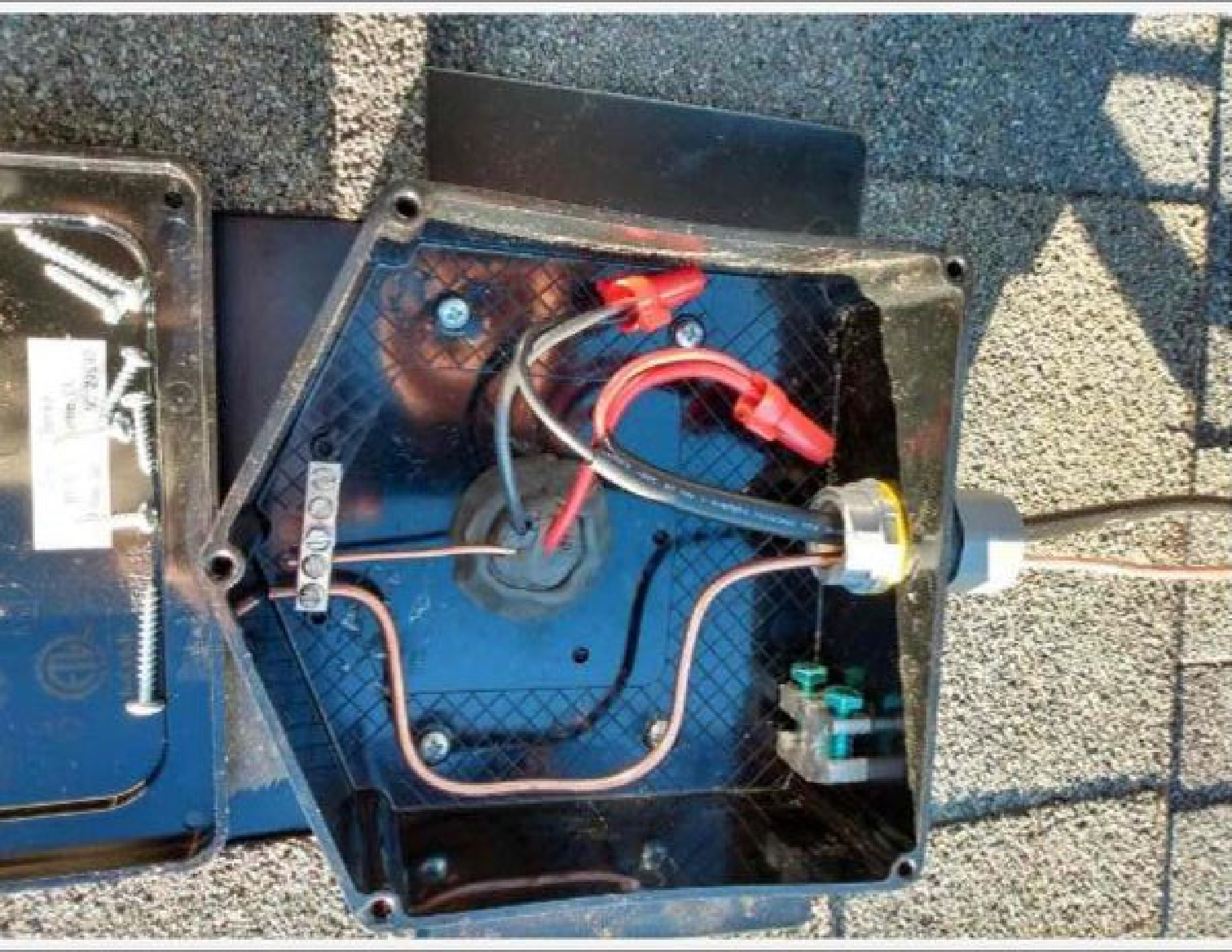
IP Address: 192.168.1.109

Gateway IP: 192.168.1.1

FORGET THIS NETWORK

SELECT ANOTHER NETWORK



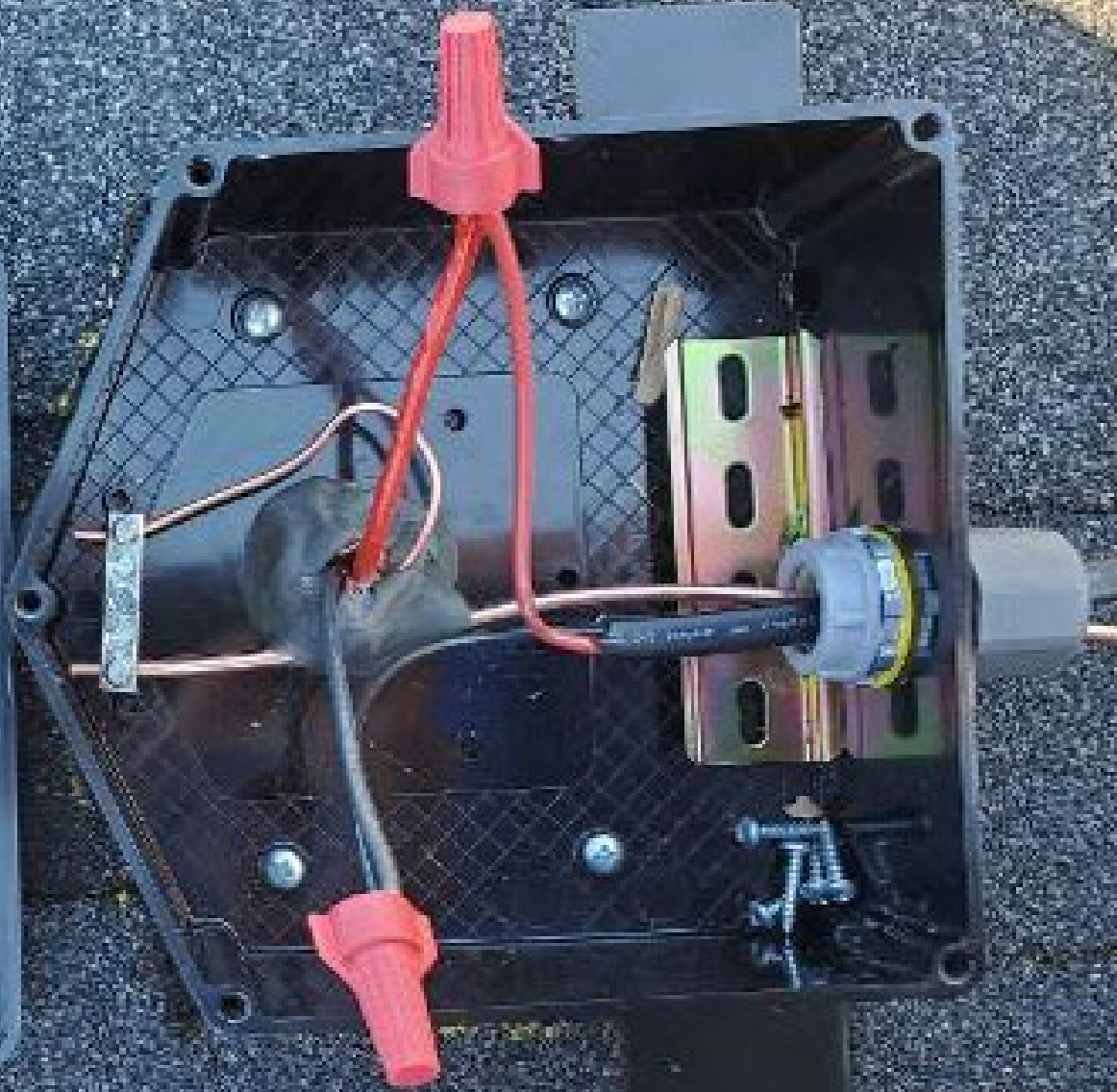




WARNING!

Model 1000-1000-1000
Size 1000-1000-1000



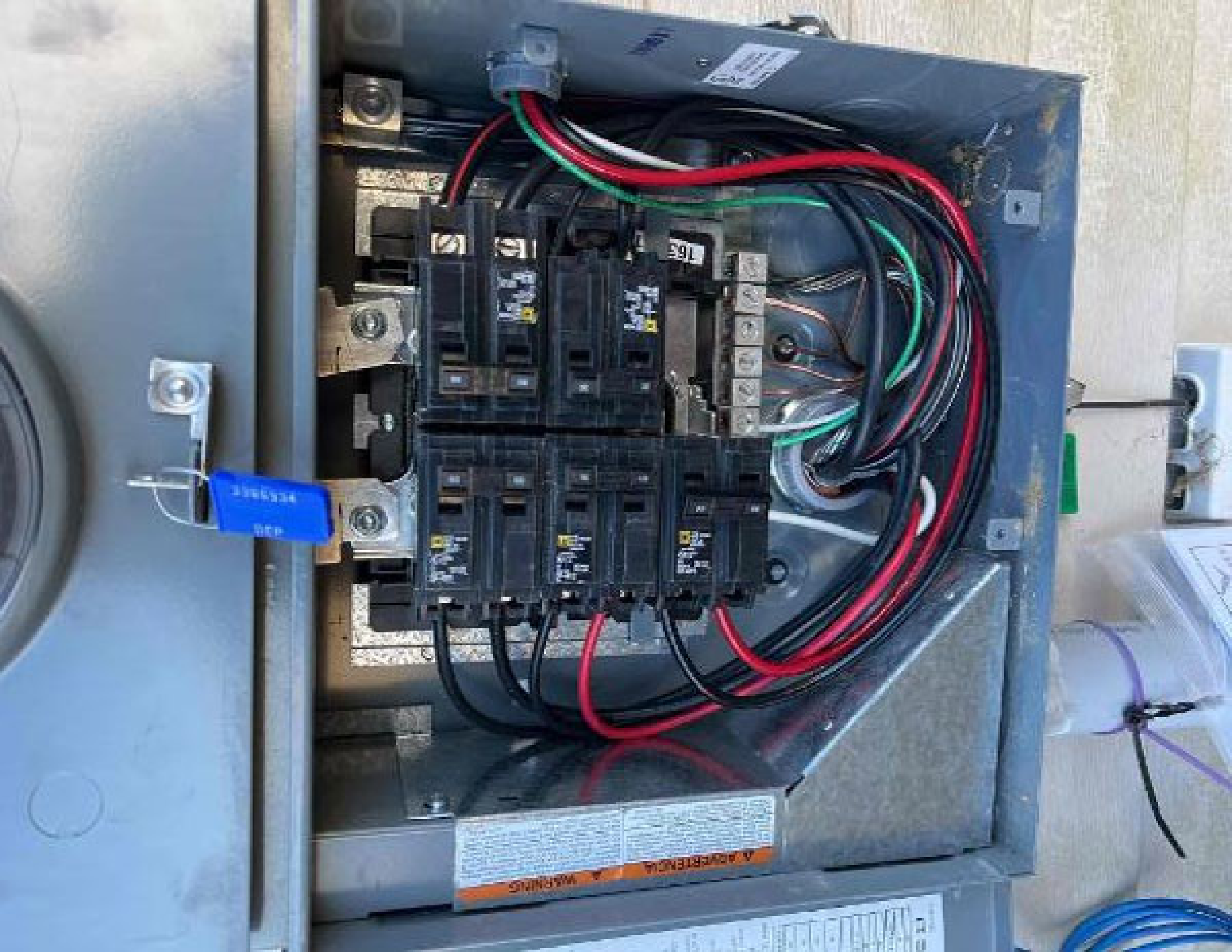












430
MOTOR

ATTENTION
WARNING



