

WARNING PHOTOVOLTAIC

PHOTOVOLTAIC WIRE - 600V  
ALPE-90°C WET OR DRY SURF  
E338454

NEVER OPEN THIS  
BOX WITHOUT  
WEAR  
SAFETY GOGGLES



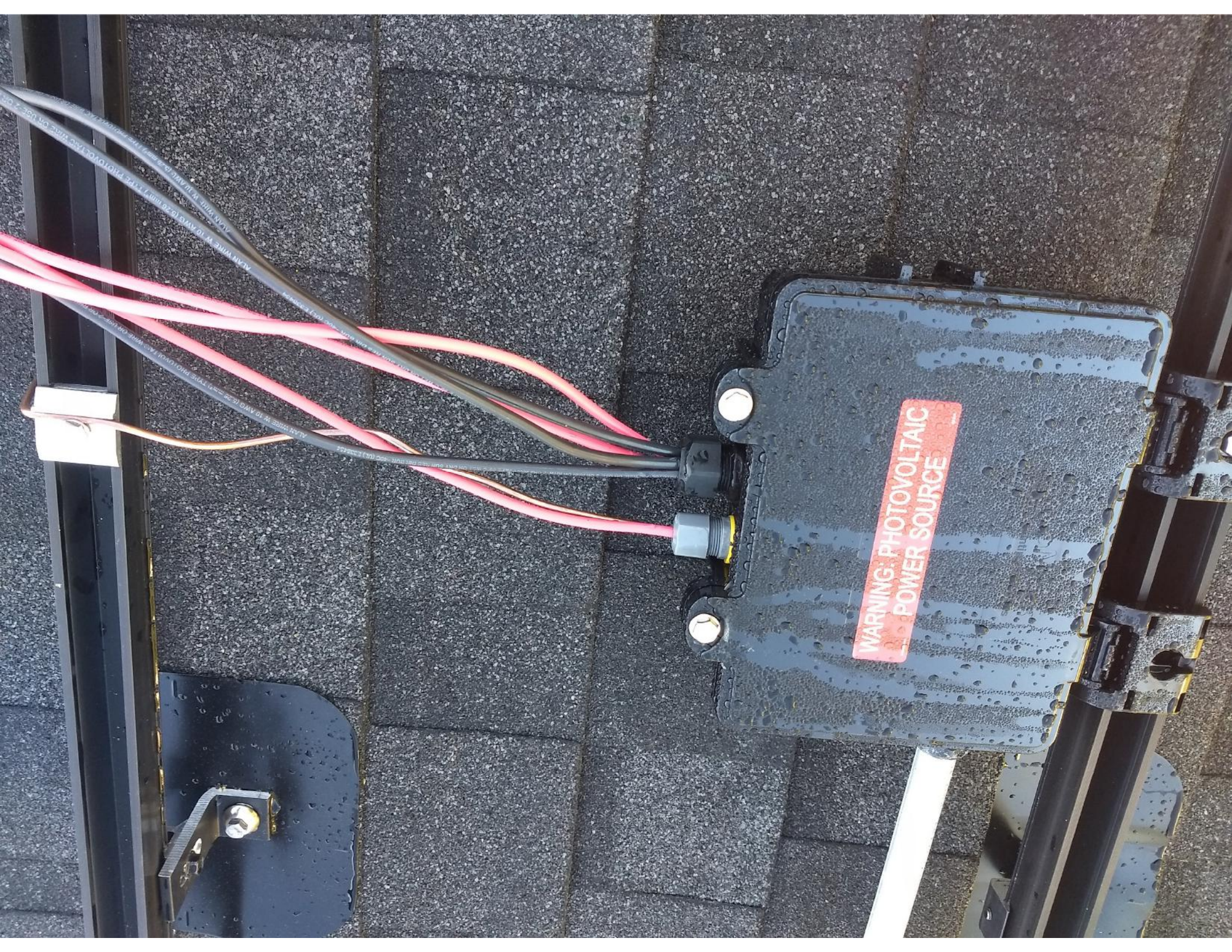
WARNING: PHOTOVOLTAIC  
POWER SOURCE

WARNING: PHOTOVOLTAIC









WARNING: PHOTOVOLTAIC  
POWER SOURCE

ALAN WINE-W-10 AWG (30-42mm) THE PHOTOVOLTAC WIRE ON USE



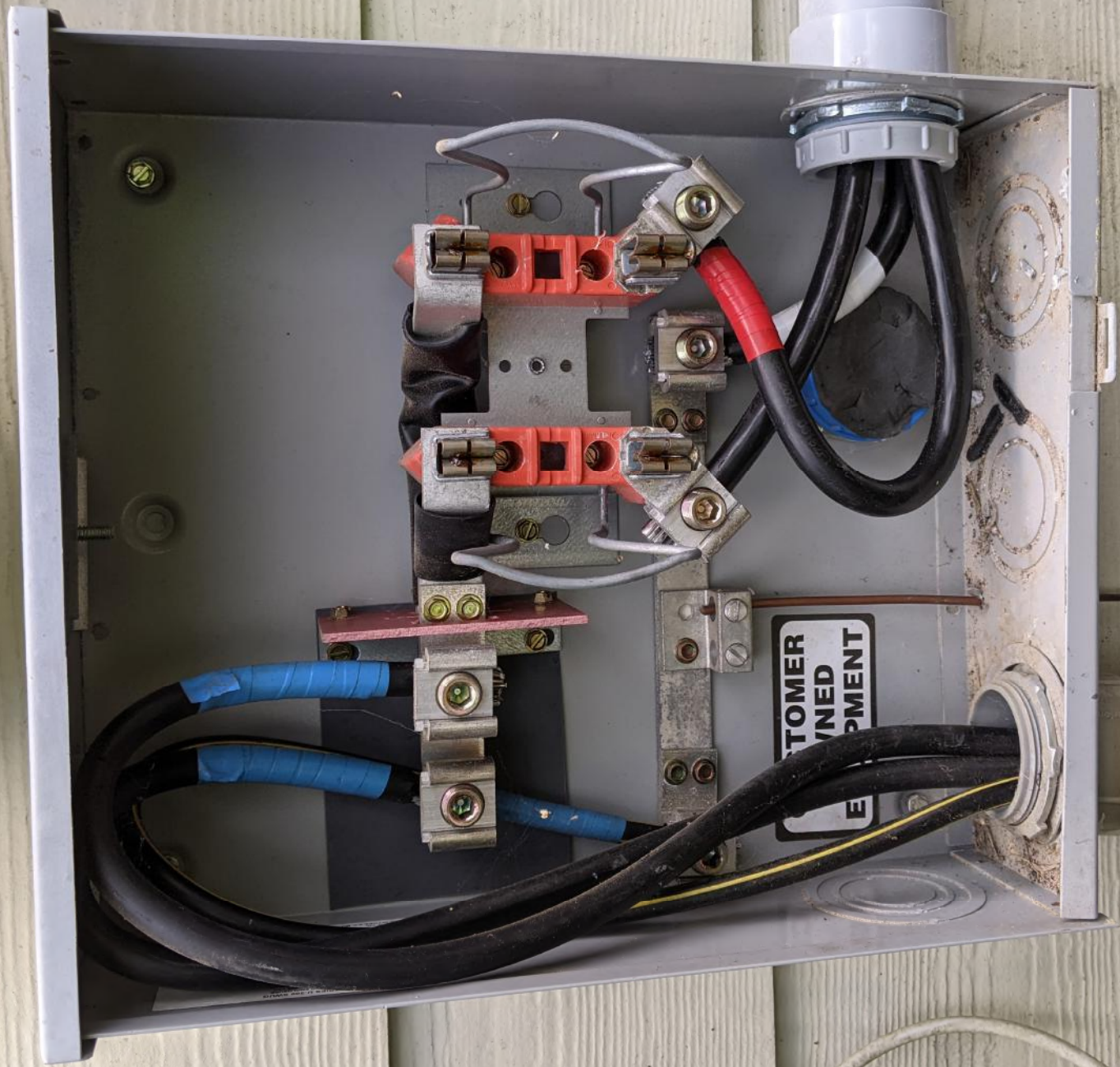




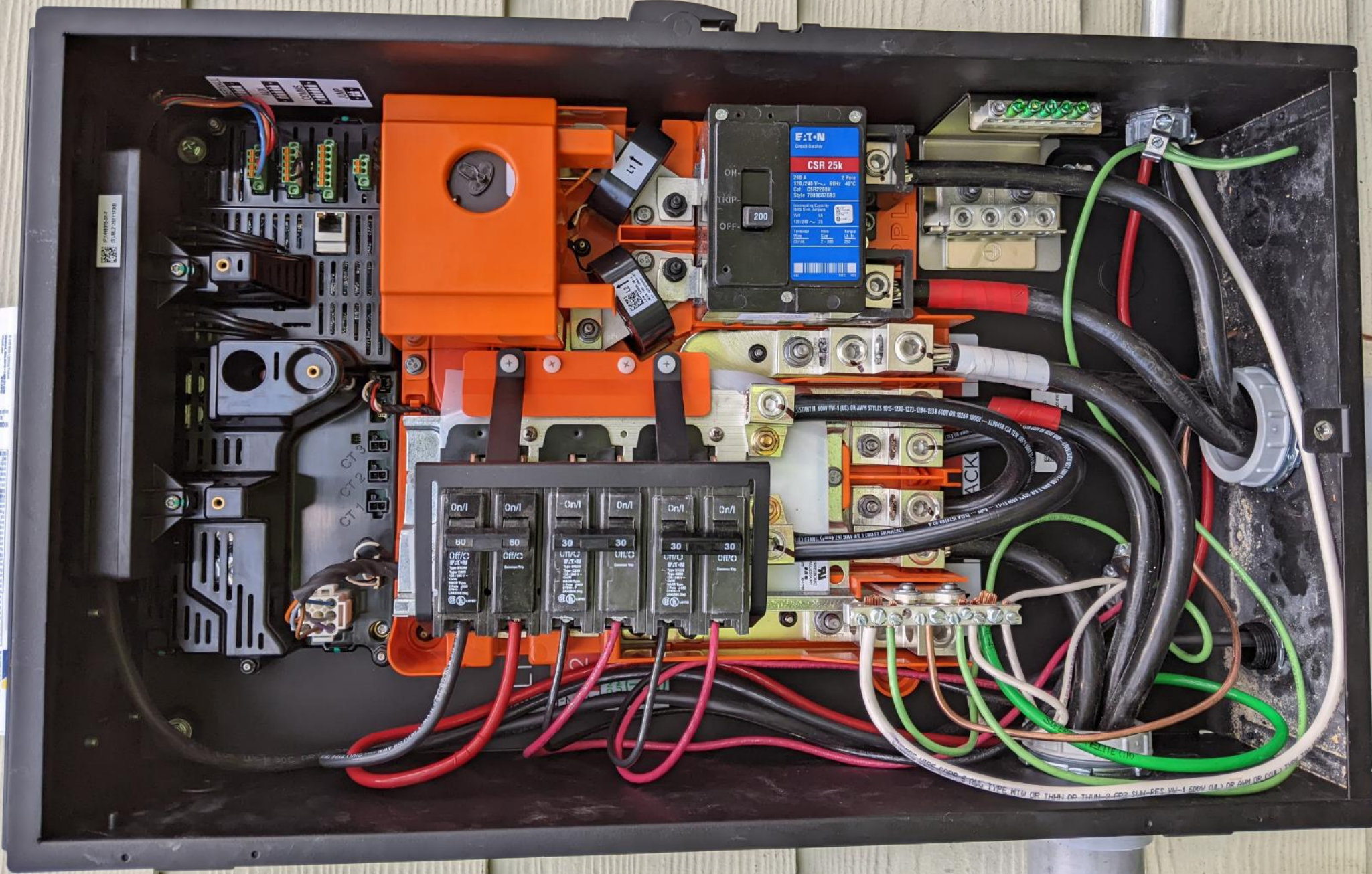




MADE IN CALIFORNIA  
NET WEIGHT 3.00 OZ  
NET LIQUID 2.00 FL OZ



CUSTOMER OWNED EQUIPMENT



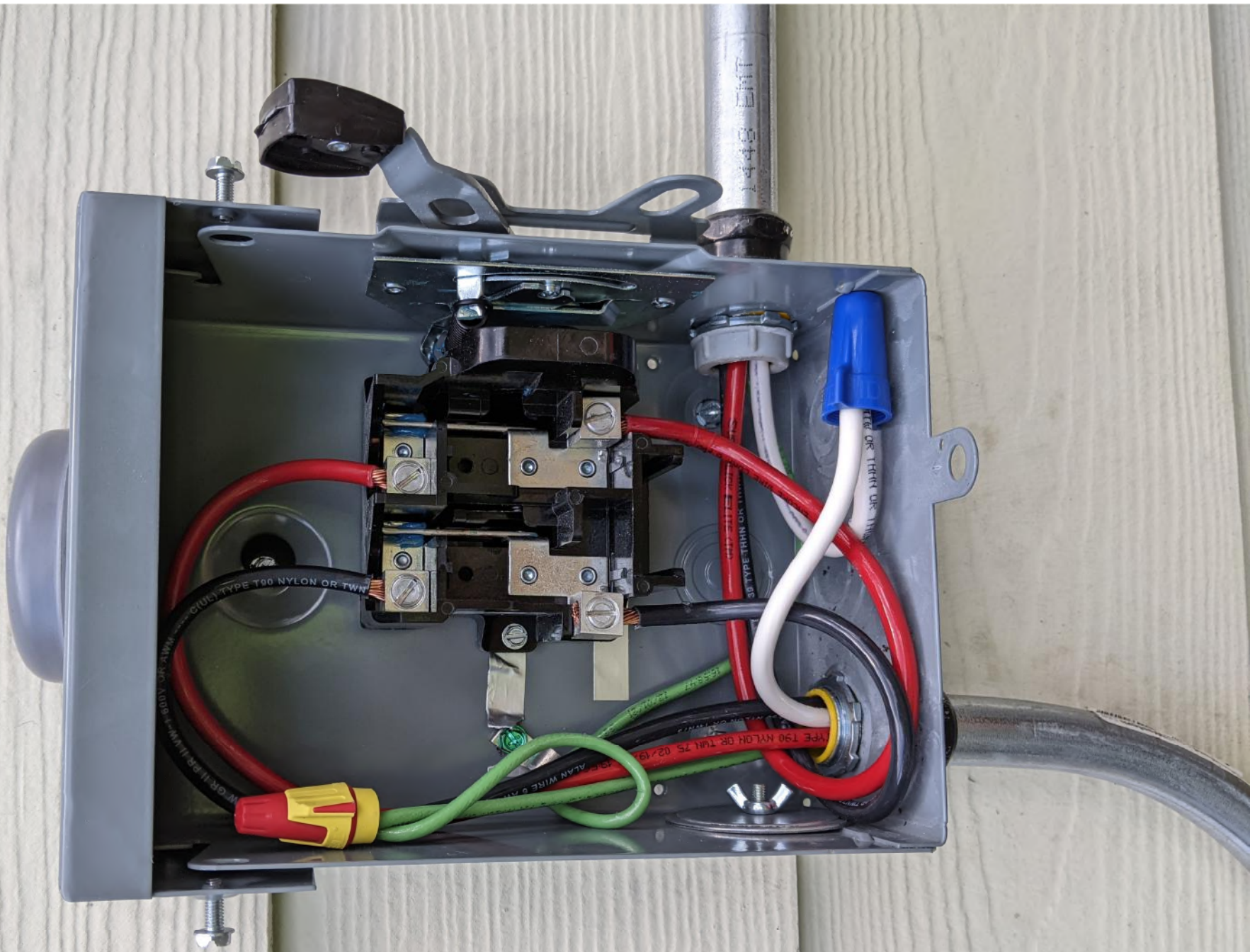
11/10/2017  
P.N. 121017190

11/10/2017  
P.N. 121017190

CT 1  
CT 2

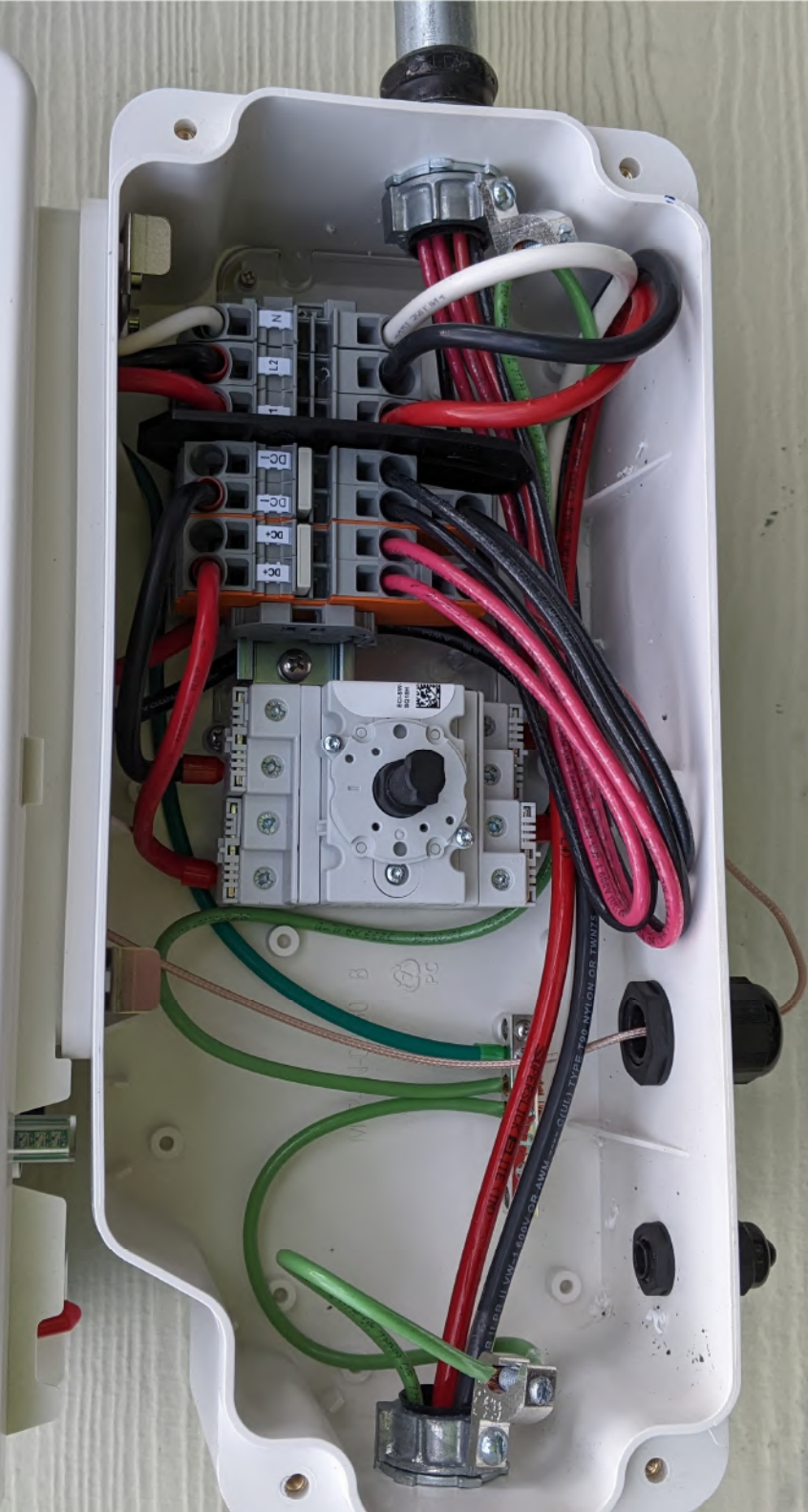
ACK

TYPE RTV OR THIN OR THIN-2 COP SUN-RES VU-1 500V (2) OR 600V (2) 100°C



solar**edge**

**HD** wave





SolarEdge Wireless Gateway Model: WIFI - GW  
 100 - 240V ~ 50mA MAX, 50/60 Hz  
 Patent marking notice: see [www.solaredge.com/patent](http://www.solaredge.com/patent)  
 FCC ID: 2AGPT - HG W2, IC20916 - HG W2 CAN, CES - 3 (P/N 118 - 30)

This device complies with Part 15 of the FCC Rules.  
 Operation is subject to the following two conditions:  
 (i.) this device may not cause harmful interference and  
 (ii.) this device must accept any interference received,  
 including interference that may cause undesired operation.

Certified to CSA Std. C22.2 No. 62368 - 1  
 Conforms to UL Std. 62368 - 1

For indoor use only

PN: SE-WFSW-B-S1-NA

SN: SJ0222-067228DAE-F4

WiFi MAC ADDR:

28:87:7C:1C:51:14

Ethernet MAC ADDR:

84:D6:C5:0C:51:14

SSID: SEDG-67228DAE-F4

Password: Cj41FqRa

Authentication type: WPA

Made in China



190110

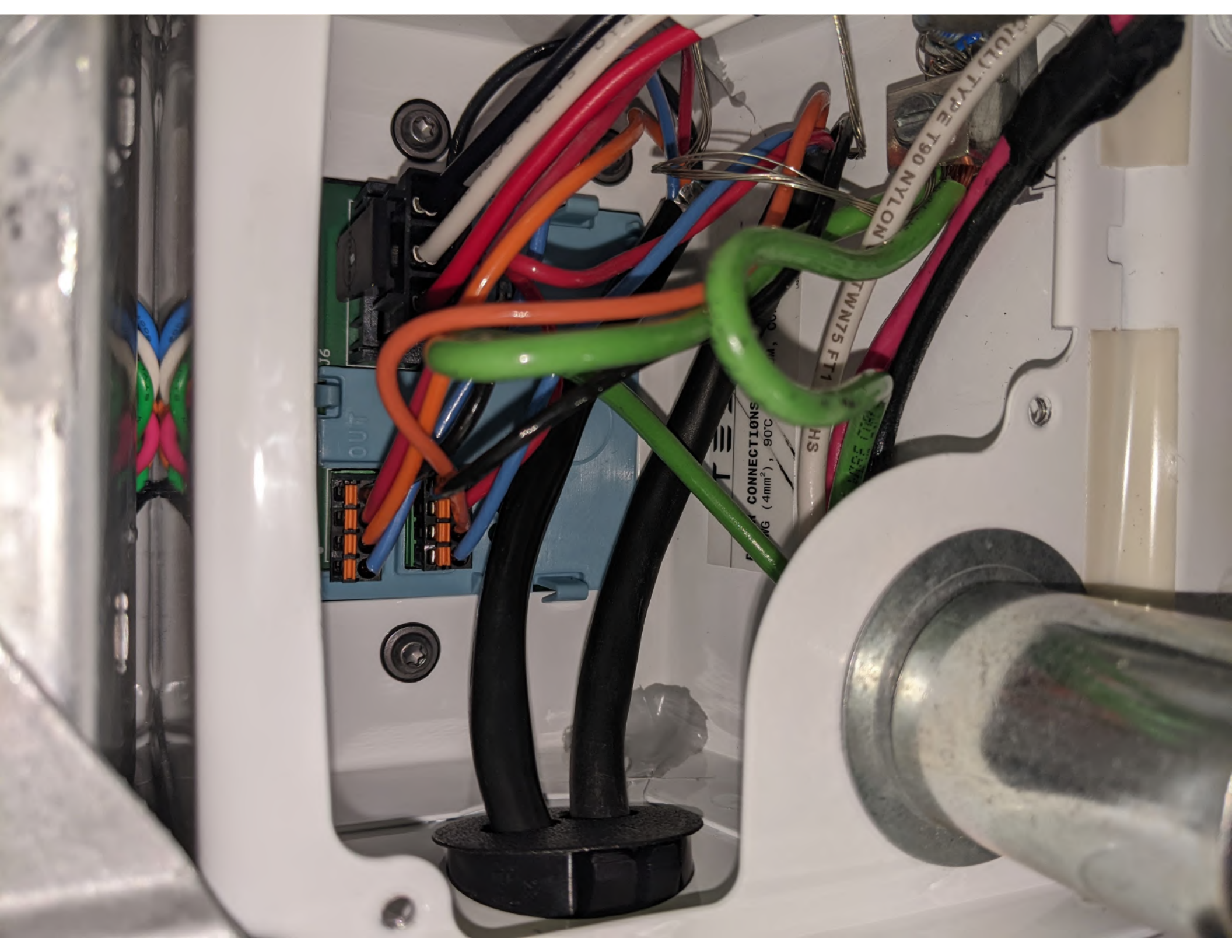


CCAI2DL P0310T6

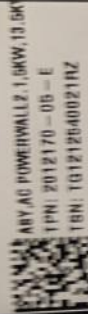








**TESLA AC POWERWALL  
GRID SUPPORT UTILITY-INTERCONNECTED**



Conforms to UL 810, 1741,  
UL 810, 1979, UL 919,  
9540, IEC 61094-1, IEC  
62109-2, IEC CAN/CSA 870  
04-17 and IEC  
62216, 106, 107, 1

ANY AC POWERWALL 2.1kW, 13.5kVA  
TYPE 2012170-08-E  
SERIAL: 101212040021N2



PROTECTIVE CLASS	Class 1
Enclosure Type (UL 1741)	Type 3R
Ingress Protection	IP 67 / IP 66
Battery & Power Electronics/Wiring	
Operating Temperature Range	-20°C TO +40°C
Inverter Temperature Range	+43°C TO +60°C
Inverter Topology	Isolated
Battery Energy	13.5 kWh
Battery Type	Li-Ion
Weight	126 kg

**AC Input/Output**

Nominal Voltage (A.C. V)	100/ 180/ 200/ 208/ 220/ 230/ 240
Voltage Range & Maximum Continuous Support	90-110 V AC; 25 A 114-126 V AC; 24 A 160-220 V AC; 25 A 180-220 V AC; 24 A 195-242 V AC; 25 A 205-248 V AC; 25 A 220-252 V AC; 24 A
Frequency Range/Nominal(Hz)	50-60/60/60
Maximum Continuous Power (kVA)	100 V AC; 2.5 kVA 120 V AC; 2.9 kVA (USA) 200 V AC; 5 kVA 208 V AC; 5 kVA (USA) 230 V AC; 5.5 kVA 240 V AC; 6.0 kVA (USA)
Power Factor Range	
Maximum Output Fault Current	-0.85 TO +0.85
Phase	32 A AC 200V/ 208V/ 240V; 2W -H -PS; 2P, All other voltages; 1R -H -PE; 1P

Max Supply Fault Current (Low)	32 A AC 200V/ 208V/ 240V; 2W -H -PS; 2P, All other voltages; 1R -H -PE; 1P
TO kVA AC	

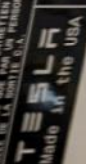


**5 Minutes**

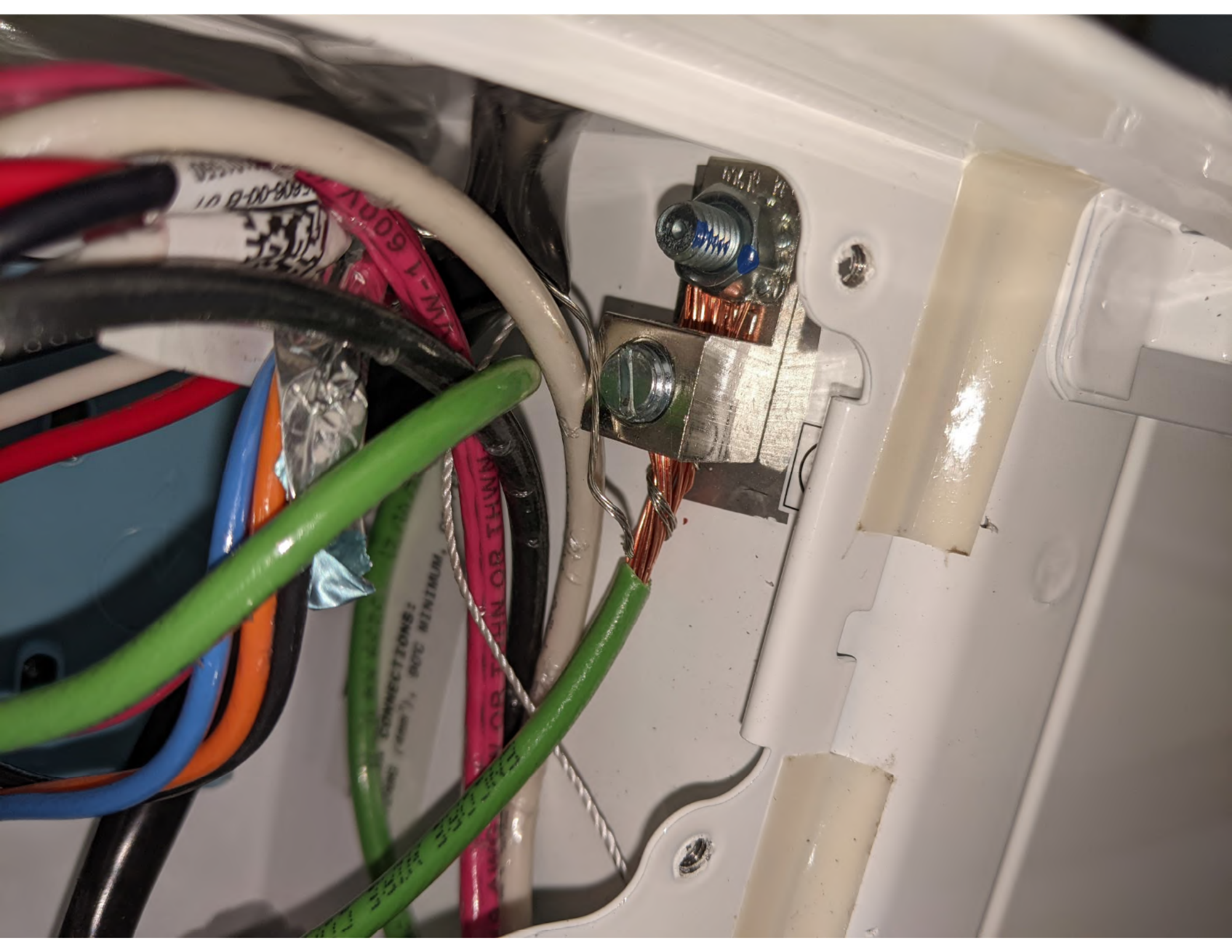
**BEFORE WORKING ON THIS CIRCUIT**  
- EQUIPMENT SHOULD BE TURNED OFF BEFORE SERVICING  
- ISOLATE UNINTERRUPTIBLE POWER SYSTEM (UPS)  
- VERIFY THE PROTECTIVE EARTH  
- VERIFY THE PROTECTIVE EARTH  
- VERIFY THE PROTECTIVE EARTH  
- VERIFY THE PROTECTIVE EARTH

**AVERTISSEMENT**  
- AVANT TRAVAILLER SUR LE CIRCUIT  
- ISOLER LE SYSTÈME ALIMENTÉ EN ÉNERGIE  
- VÉRIFIER LE SYSTÈME D'ALIMENTATION EN ÉNERGIE  
- VÉRIFIER LE SYSTÈME D'ALIMENTATION EN ÉNERGIE  
- VÉRIFIER LE SYSTÈME D'ALIMENTATION EN ÉNERGIE

**WARNING!**  
- BEFORE WORKING ON THIS CIRCUIT  
- ISOLATE UNINTERRUPTIBLE POWER SYSTEM (UPS)  
- VERIFY THE PROTECTIVE EARTH  
- VERIFY THE PROTECTIVE EARTH  
- VERIFY THE PROTECTIVE EARTH



Made in the USA  
Tesla Motors, Inc.  
Electric Ave., USA  
Tel: (1977) 948-3740  
www.teslamotors.com



10 0-00-888

CONNECTIONS!  
MINIMUM,  
OR THIN OR THIN

1-600V

351R 351J 351K

**TESLA AC POWERWALL  
GRID SUPPORT UTILITY-INTERCONNECTED**



KEY: AC POWERWALL 1.1, NEW, 15.5kWh  
 1790 2912178 - 05 - E  
 1501701025 907170  
 1501701025 907170

Outdoors by UL 919 Type 1, 15.5kWh  
 UL 919 Type 1, 15.5kWh  
 UL 919 Type 1, 15.5kWh  
 UL 919 Type 1, 15.5kWh  
 UL 919 Type 1, 15.5kWh  
 UL 919 Type 1, 15.5kWh



Model Number	CL1441
Product Type (UL 1741)	Type 3R
Inverter Protection Battery & Power	IP 67 / IP 68
Operating Temperature Range	-30°C to +50°C
Storage Temperature Range	+3°C to +50°C
Inverter Topology	Isolated
Battery Energy	15.5 kWh
Battery Type	Li-Ion
Weight	125 kg

**AC Input/Output**

Nominal Voltage (A.C. V)	100/ 120/ 200/ 208/ 220/ 230/ 240
Voltage Range & Maximum Continuous Current	90-110 V AC: 20 A 114-128 V AC: 20 A 144-158 V AC: 20 A 168-220 V AC: 25 A 198-220 V AC: 25 A 198-242 V AC: 25 A 227-252 V AC: 25 A 228-252 V AC: 24 A
Frequency Range (Nominal Hz)	50-60 Hz: 50-60
Maximum Continuous Power (kW)	100 V AC: 2.0 kW 120 V AC: 2.5 kW (USA) 200 V AC: 5 kW 208 V AC: 5 kW (USA) 220 V AC: 5 kW 230 V AC: 5 kW 240 V AC: 5 kW (USA)
Power Factor Range	0.85 to 1.0
Maximum Output Peak Current	30 A @ 100V 36A @ 120V 50A @ 200V 50A @ 208V 50A @ 220V 50A @ 230V 50A @ 240V
Max. Supply Fault Current Limit	10 A @ 100V 12 A @ 120V 15 A @ 200V 15 A @ 208V 15 A @ 220V 15 A @ 230V 15 A @ 240V



**WARNING: RISK OF FIRE, ELECTRIC SHOCK, OR EXPLOSION IF BATTERY IS INCORRECTLY HANDLED. SEE USER MANUAL FOR SAFETY INFORMATION.**

**WARNING: RISK OF FIRE, ELECTRIC SHOCK, OR EXPLOSION IF BATTERY IS INCORRECTLY HANDLED. SEE USER MANUAL FOR SAFETY INFORMATION.**

**WARNING: RISK OF FIRE, ELECTRIC SHOCK, OR EXPLOSION IF BATTERY IS INCORRECTLY HANDLED. SEE USER MANUAL FOR SAFETY INFORMATION.**

**WARNING: RISK OF FIRE, ELECTRIC SHOCK, OR EXPLOSION IF BATTERY IS INCORRECTLY HANDLED. SEE USER MANUAL FOR SAFETY INFORMATION.**

**WARNING: RISK OF FIRE, ELECTRIC SHOCK, OR EXPLOSION IF BATTERY IS INCORRECTLY HANDLED. SEE USER MANUAL FOR SAFETY INFORMATION.**

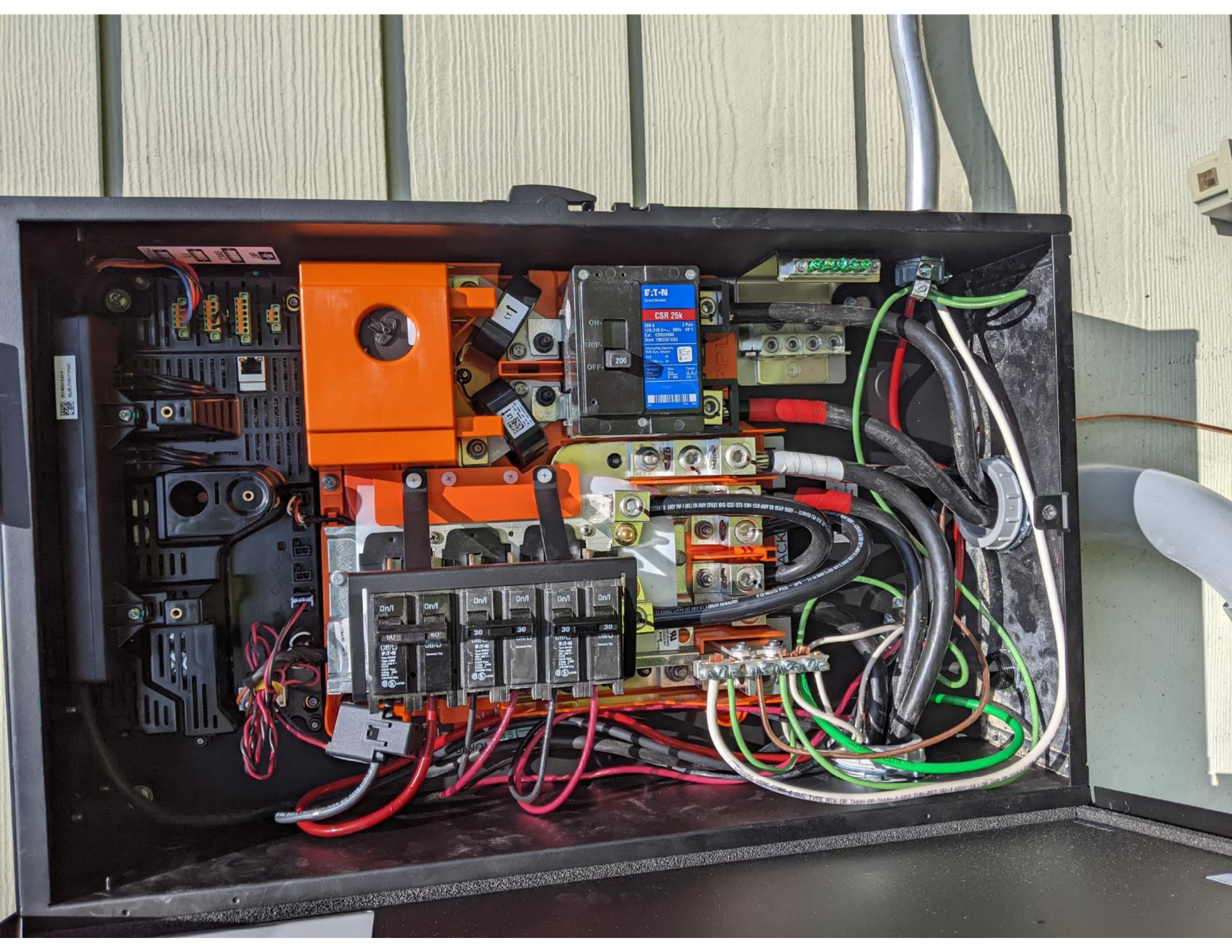
**WARNING: RISK OF FIRE, ELECTRIC SHOCK, OR EXPLOSION IF BATTERY IS INCORRECTLY HANDLED. SEE USER MANUAL FOR SAFETY INFORMATION.**

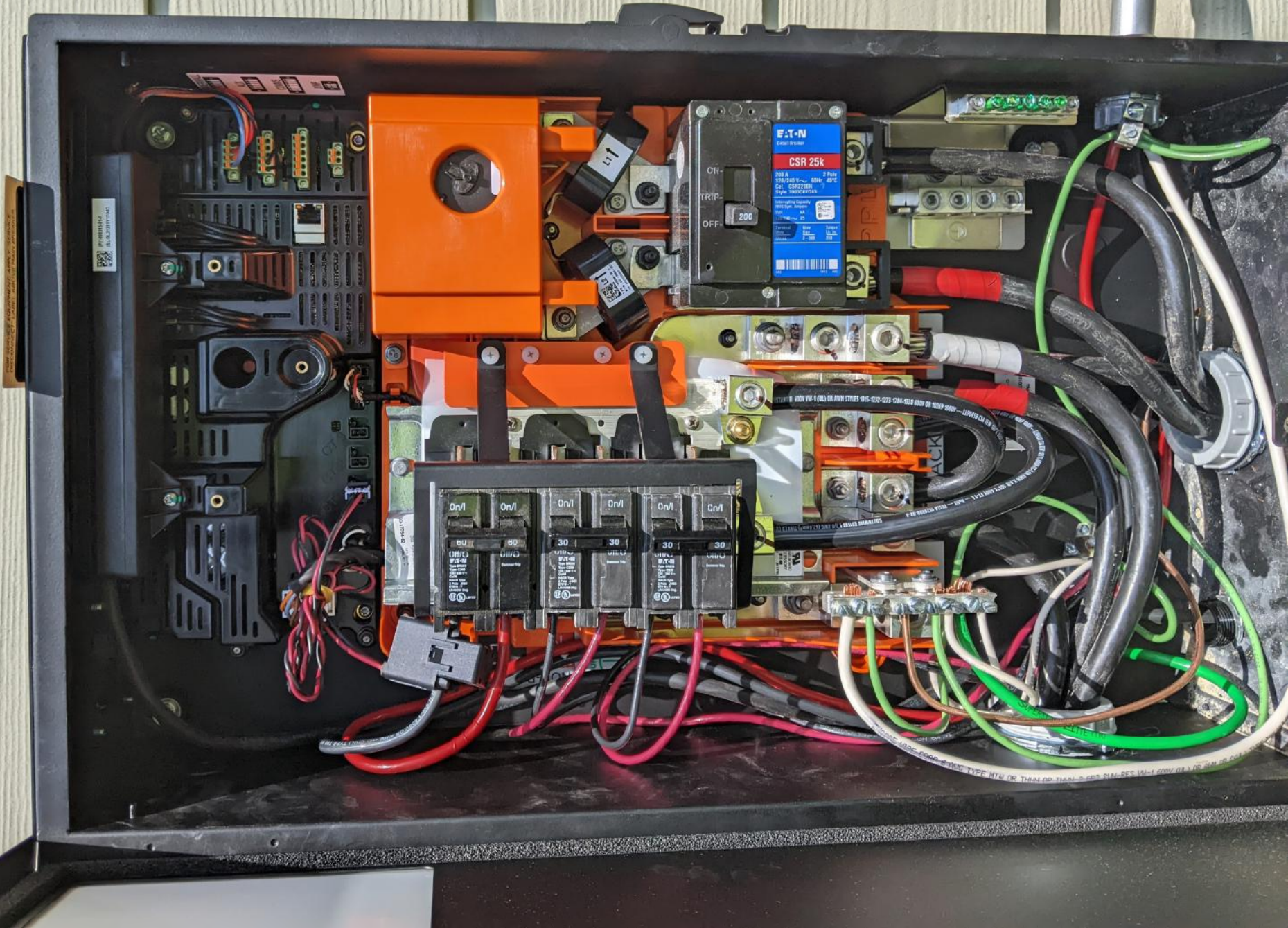
**WARNING: RISK OF FIRE, ELECTRIC SHOCK, OR EXPLOSION IF BATTERY IS INCORRECTLY HANDLED. SEE USER MANUAL FOR SAFETY INFORMATION.**

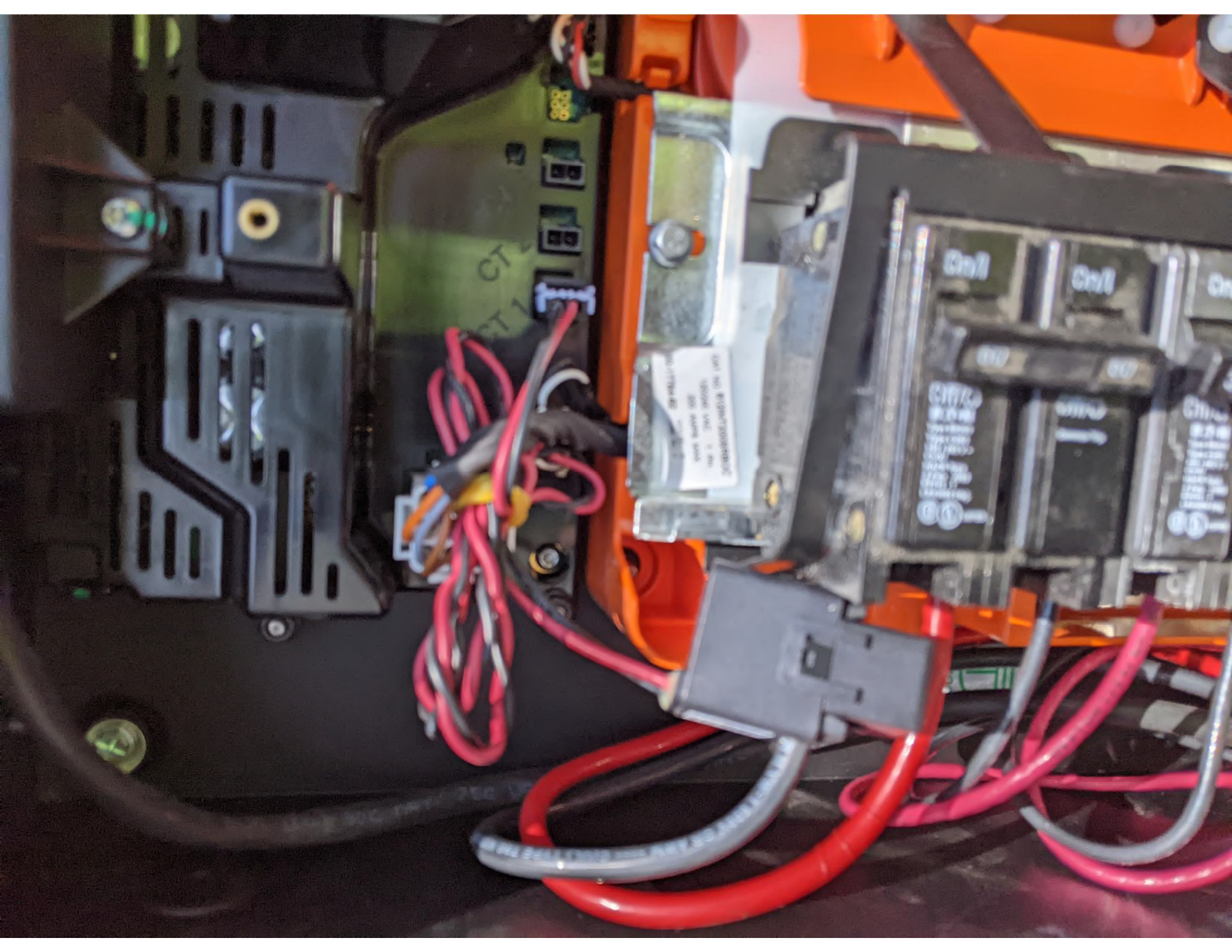
**WARNING: RISK OF FIRE, ELECTRIC SHOCK, OR EXPLOSION IF BATTERY IS INCORRECTLY HANDLED. SEE USER MANUAL FOR SAFETY INFORMATION.**









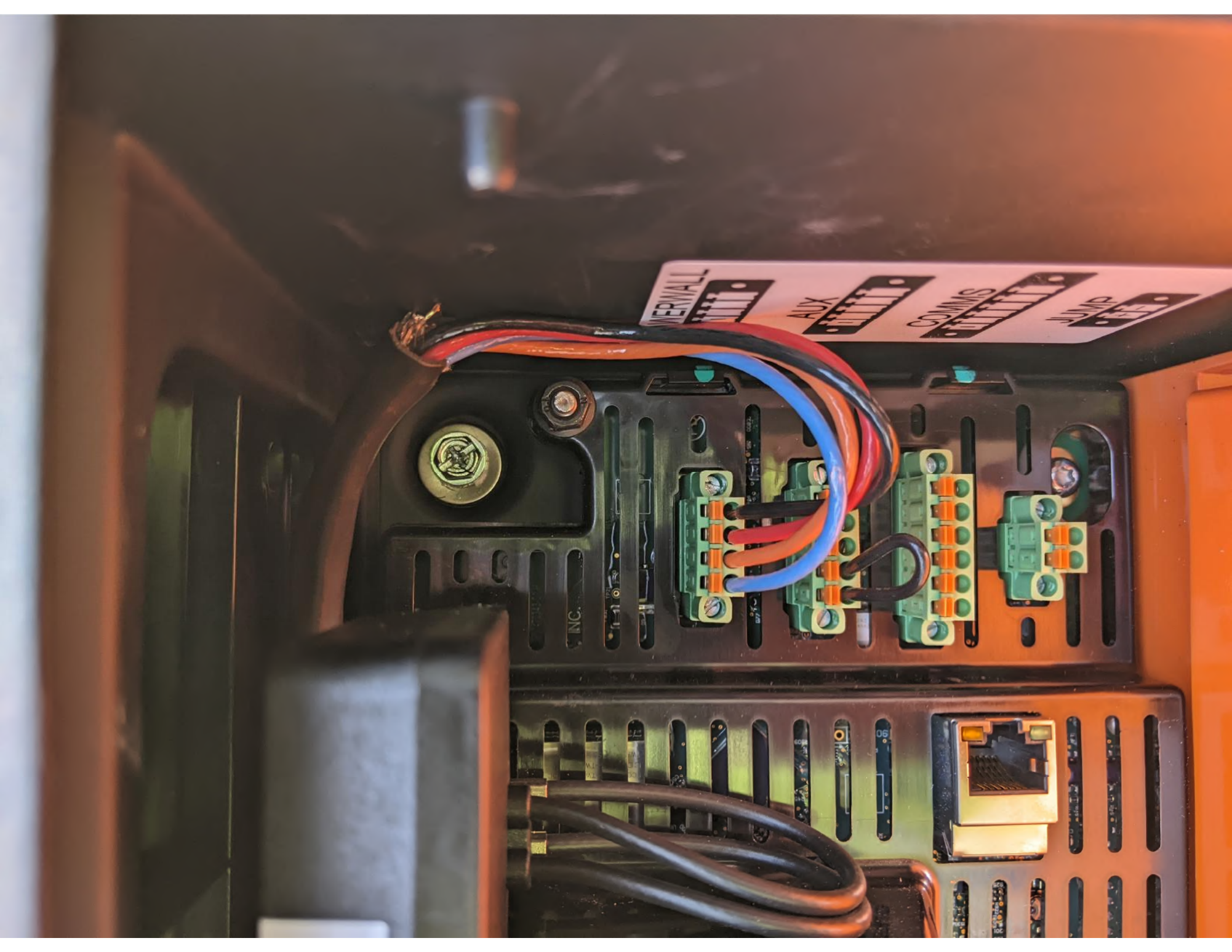








N







meter 2527

WARNING  
ELECTRIC SHOCK  
DEATH

TESLA

WARNING  
ELECTRIC SHOCK  
DEATH

WARNING  
ELECTRIC SHOCK  
DEATH

WARNING  
ELECTRIC SHOCK  
DEATH











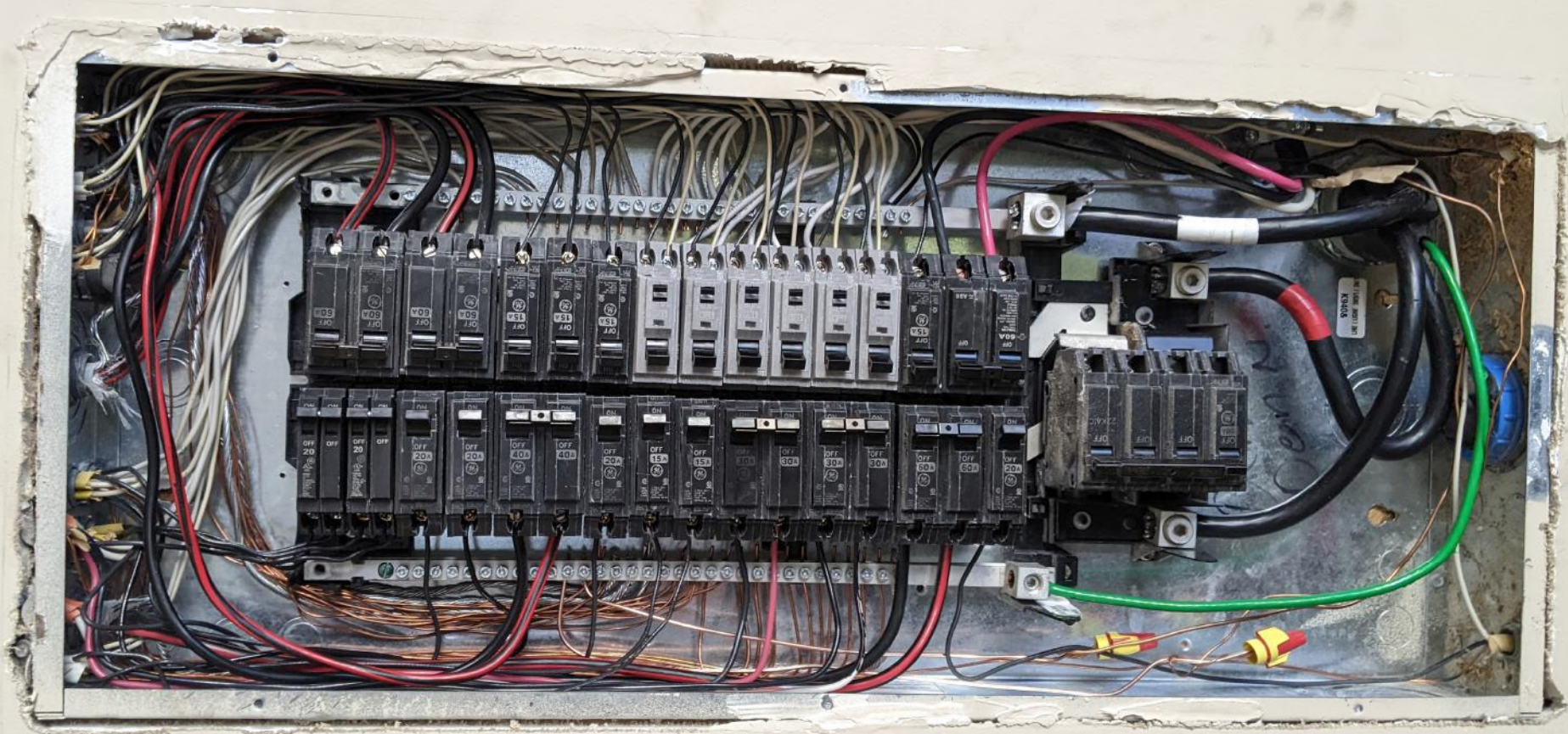


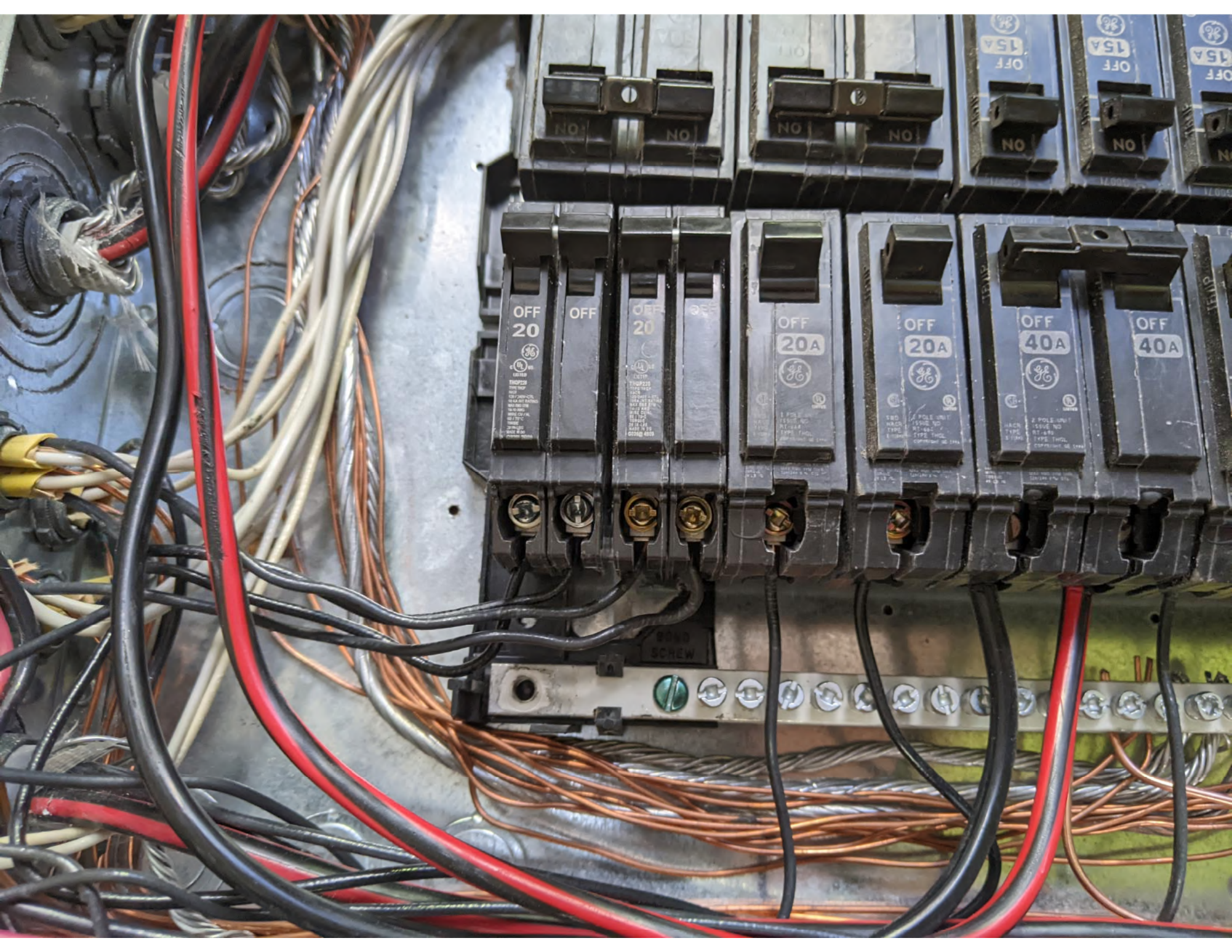


Resident Contact  
Name: [illegible]  
Address: [illegible]  
City: [illegible]  
State: [illegible]  
Zip: [illegible]

**WARNING**  
TO PREVENT ELECTRICAL SHOCK OR FIRE, DO NOT REMOVE COVER OR OPEN ENCLOSURE. CONTACT A QUALIFIED ELECTRICIAN FOR REPAIRS OR MAINTENANCE.







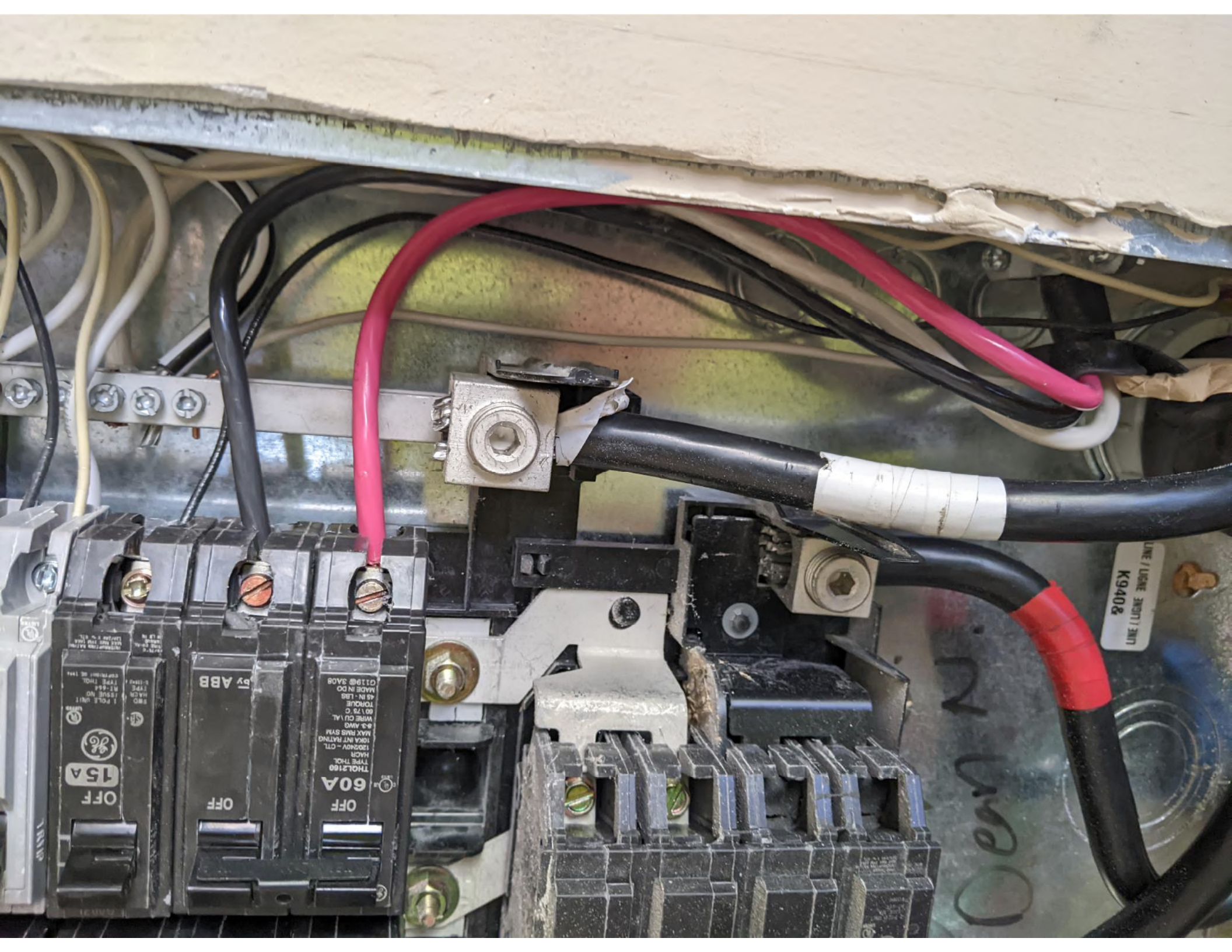


ABB  
THQ12160  
60A  
OFF  
15A  
OFF

THQ12160  
60A  
OFF  
15A  
OFF

LINE / LICENSE 309711 3MT  
K9402

Open

LIGNE ENIGIT / ENIT  
K9408





LINE / USINE 30371 / 3071  
K9403





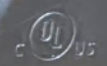




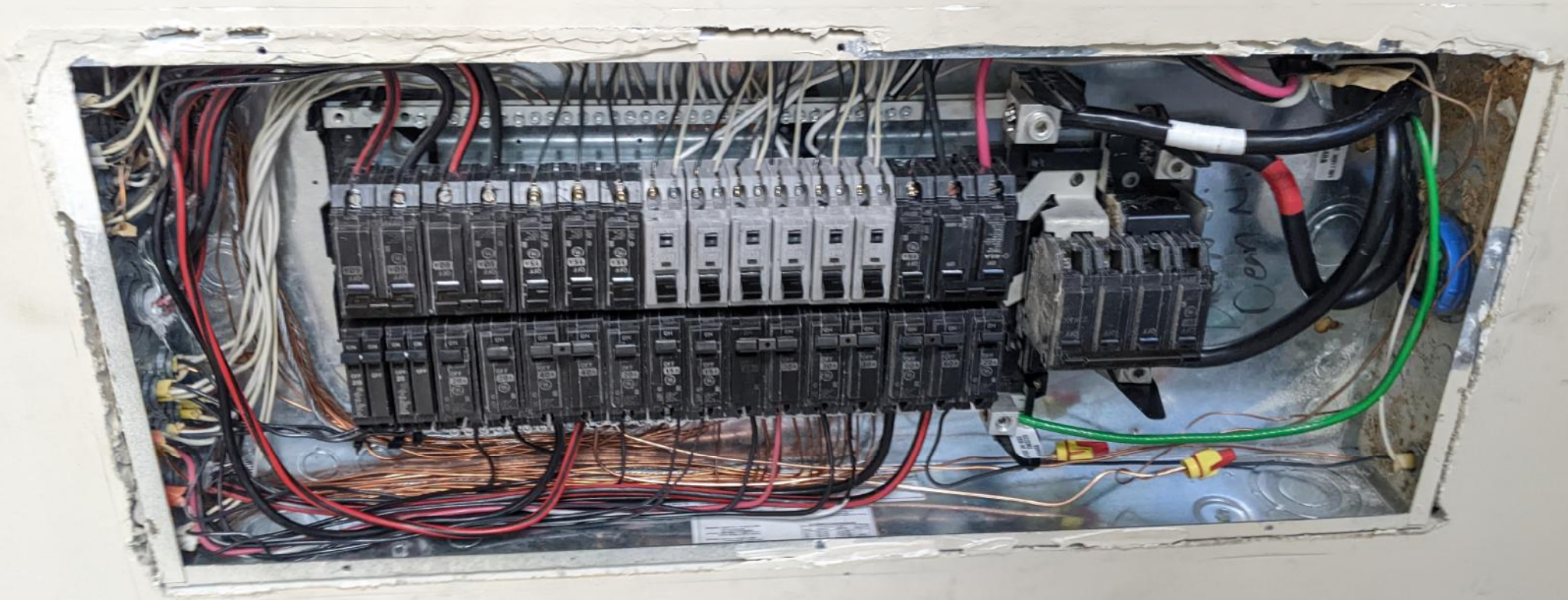




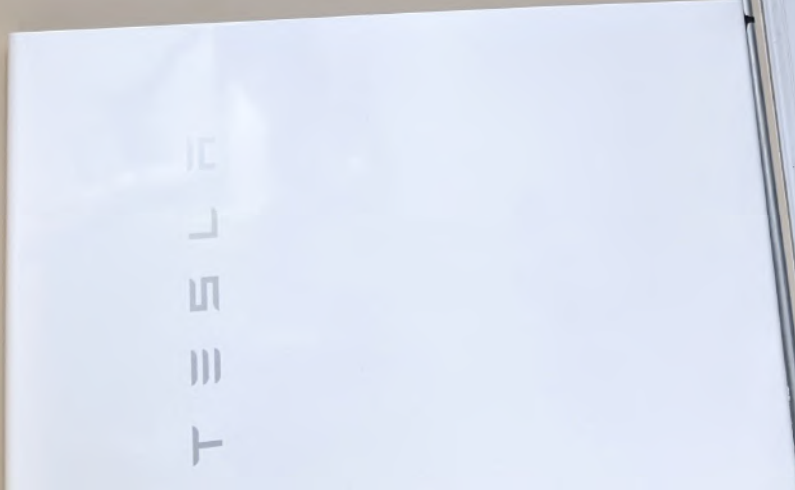
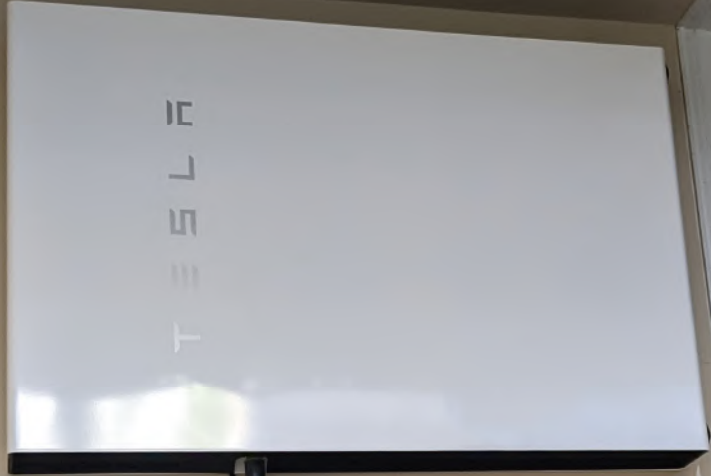
E491006



3/4" COVER

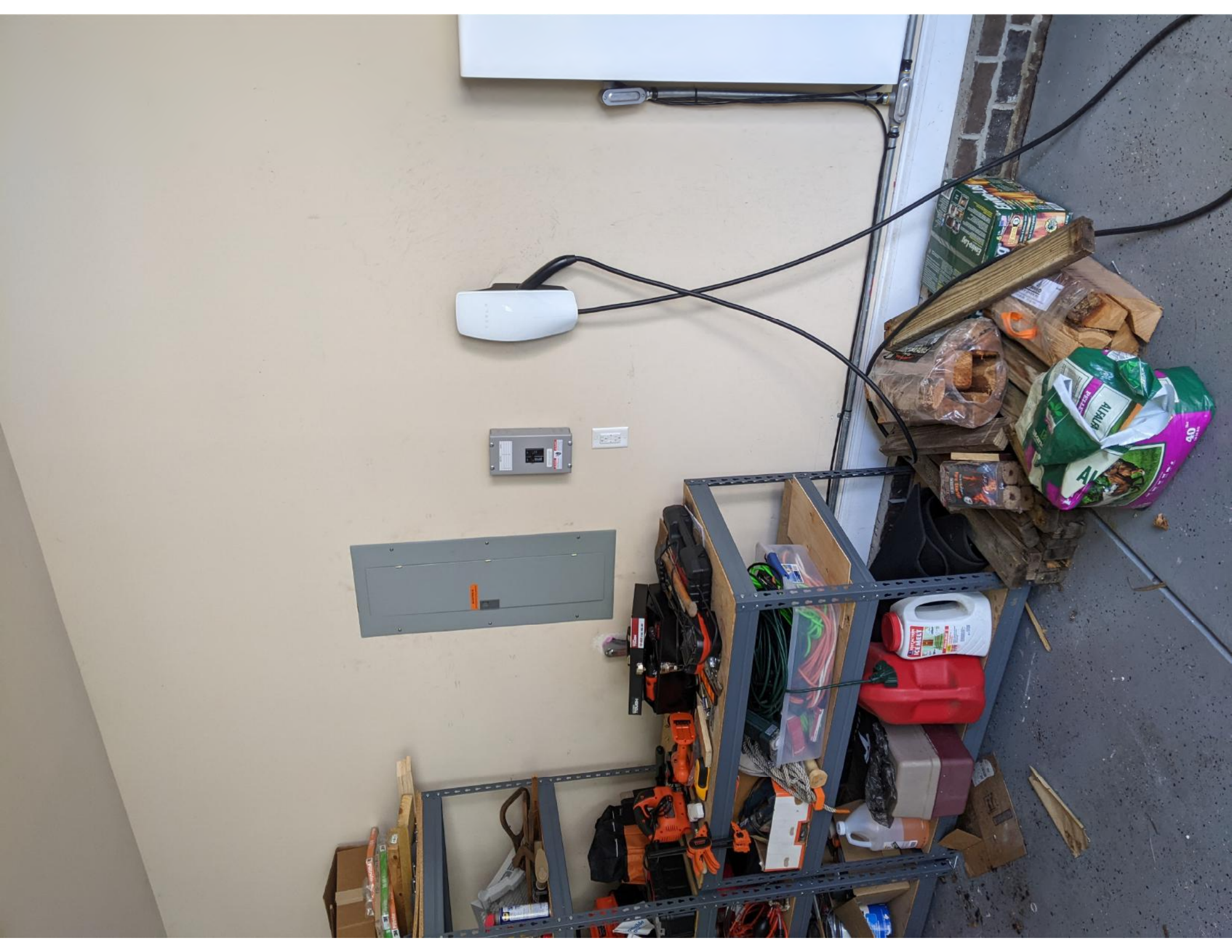


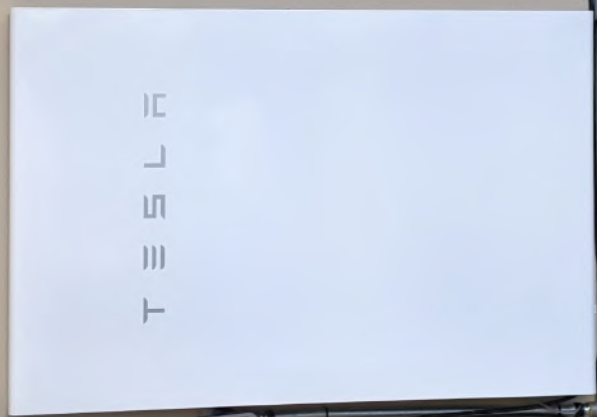
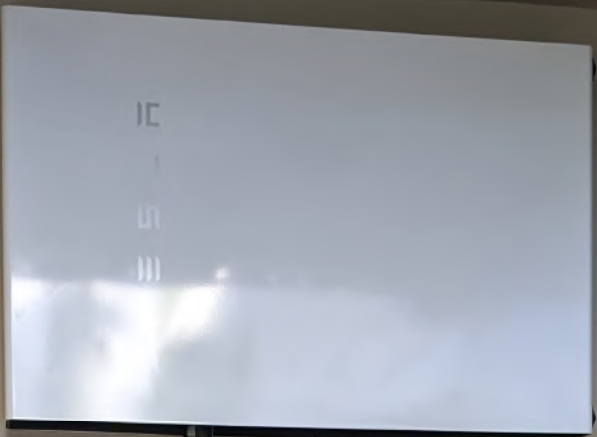












T E S L A



