





REC Alpha Pure Series
REC400AA Pure
Serial Number: FBB-4009575677

Phone: +65 6485 9225
www.recgroup.com

Power Output (Pmax) 400 W

Watt Class Sorting 0/+5 W

Power Production Tolerance +/- 3 %

Rated Voltage (Vmpp) 42.1 V

Rated Current (Impp) 9.51 A

Open Circuit Voltage (Voc) (+/- 3%) 48.8 V

Short Circuit Current (Isc) (+/- 3%) 10-25 A

Maximum System Voltage (Vsys) 1000 V

Maximum Series Fuse (DC) (UL) 25 A

Maximum Series Fuse (DC) (IEC) 25 A

Design Load +4666 / -2666 Pa*

Maximum Test Load +7000 / -4000 Pa*

(Values at STC: 1000 W/m² AM 1.5, cell temp 25°C)

See installation manual for *1 maximum installation requirements and *2 installation requirements to achieve a specified system life class

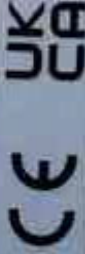


• Confirms to
UL Std. E17301/2
• Certified for
CSA Std. C22.396.1720.1.0
• UL File No. 1720-1.0

INTEK
3032724



• IEC 61215
• IEC 61730



Manufactured: 12.12.2021



Warning electrical hazard. This module produces electricity when exposed to light
CAUTION: DO NOT DISCONNECT UNDER LOAD
Avertissement: Risque de choc électrique. Ce module solaire produit de l'électricité lorsqu'il est exposé à la lumière.

ATTENTION: NE PAS DECONNECTER SOUS TENSION

For field connections, use min. 4 mm² (12 AWG) UL PV wires insulated for a min. at 90°C
Made in Singapore by REC SOLAR PTE. LTD.
20, TULAS SOUTH AVENUE 1A, SINGAPORE 637312, SINGAPORE
EU/Europe Contact: REC Solar EMEA GmbH
Belantstr. 71a, 81541 Munich, Germany, Tel: +49 (0)189-442-38590
For other regions see: www.recgroup.com/contact



IQ Combiner 3 ES

Photovoltaic
Combiner Box

X-IQ-AM1-240-3-ES



Electrical ratings

Voltage 240VAC, 60Hz
DG Breakers 80A MAX (combined)
DG Inputs 64A MAX (combined)
Output 65A MAX, 90A MAX feeder OCPD
Temperature 46°C MAX ambient
Use only Eaton BR series Breakers (60A max)

S/N:


202138075421

P/N:


883-00820 11

Dedicated solar and DG Combiner Box - do not add loads 10 AMP
Envooy Breaker not used for backfeed

Connection	Wire sizes	Torque
DG Breaker	14-10 AWG	2.2 Nm (20 lb-in)
	8 AWG	2.8 Nm (25 lb-in)
	6-4 AWG	3.0 Nm (27 lb-in)
60A Circuit Breaker only	4-1/0 AWG	5.0 Nm (45 lb-in)
	14-1/0 AWG	5.0 Nm (45 lb-in)
Neutral and ground	6-14 AWG	2.2 Nm (20 lb-in)
	10-4 AWG	5.0 Nm (45 lb-in)
Large screw	3-2/0 AWG	5.6 Nm (50 lb-in)
Small screw		5.6 Nm (50 lb-in)
Main lug		

Copper conductors only, rated min. 75°C.

Follow NFPA 70 (NEC), or CSA C22.1 part 1, and all local codes.

For DG Breakers larger than 20A, use wire insulated for 90°C

based on 75°C ampacities.







PROPERTY AND ESTATE
PROPERTY GROUP
DEVELOPMENT SERVICES

PROPERTY GROUP
DEVELOPMENT SERVICES

PROPERTY GROUP
DEVELOPMENT SERVICES

PROPERTY GROUP
DEVELOPMENT SERVICES

PROPERTY GROUP
DEVELOPMENT SERVICES

PROPERTY GROUP
DEVELOPMENT SERVICES

PROPERTY GROUP
DEVELOPMENT SERVICES

PROPERTY GROUP
DEVELOPMENT SERVICES

PROPERTY GROUP
DEVELOPMENT SERVICES















BLUE RAVEN
SOLAR

Job Hazard Analysis

Customer Name: **Tommy Miller**
Installation Date: **03/07/22**
Address: **420 Mill Bend Dr.**

Hazard Category	Potential Hazards	Hazard Controls
Ladder Safety	<ul style="list-style-type: none"> Displacement Defective Electrocution 	Stabilizers with straps
Fall Protection	<ul style="list-style-type: none"> Fall from 6' or greater 	Harness + Anchor
Electrical Safety	<ul style="list-style-type: none"> Electrocution ARC Flash 	Gloves & hard hat
Heat & Related Issues	<ul style="list-style-type: none"> High Heat- 85° to 99° Extreme Heat 100° or higher 	Water + Shade
Public Protection	<ul style="list-style-type: none"> Falling object Slip/Trip/Fall 	Caution cones + signs
Nearest Hospital	Wake Med 502 - 496 3514	
Safety Contact:	Henry Mill 502 - 496 3514	
Additional Notes:		
Crew Members		
Crew Lead:	Name	Signature
	Shelby Williams	<i>[Signature]</i>
	Dominic Porter	<i>[Signature]</i>
	Richard Miranda	<i>[Signature]</i>

In Case of Emergency, call 911 immediately and proceed to the nearest emergency room
For non-emergency injuries, please report the injury to your manager, proceed to a medical provider for treatment, and scan the QR code below to complete an Injury/Incident Report Form.

Please request a Work Status Update and provide the information below for any visits to the Emergency Room or Urgent Care.



Workers Compensation Provider: Berkshire Hathaway Homestate Companies
Berkshire Hathaway Address: PO Box 881715, San Francisco CA 94188
Berkshire Hathaway Fax Number: (800) 651-0984
Berkshire Hathaway Policy Number: BAWC220029 (OR, FL) - BAWC23333 (all other states)
Blue Raven Fax Number: (352)-488-408

NA

NOMINAL



DUAL

SOURCE
PV SOLAR



WARNING

MAIN DISTRIBUTION
POWER TO THIS BUILDING
FROM A ROOF MOUNT
RAPID SHUTDOWN C
GROUPED AND LABEL
AND 10 FT OF

SOLAR PV
WITH RA

TURN RAPID SHUT
SWITCH TO TH
"OFF" POSITION
SHUT DOWN PV SYS
AND REDUCE
SHOCK HAZARD
IN THE ARRAY



SYSTEM
CONTACT

WV 15.7 A
RANGE 240 V

WARNING

EXPOSED TO HIGH
VOLTAGE
DANGER



⚠️ WARNING

ELECTRIC SHOCK HAZARD

TERMINALS ON THE LINE AND LOAD WIRING MAY BE ENERGIZED IN THE OPEN POSITION

PHOTOVOLTAIC SYSTEM

⚠️ AC DISCONNECT ⚠️

LISTED AC OUTPUT CURRENT: 15 A
NOMINAL OPERATING AC VOLTAGE: 120 V

⚠️ WARNING

THIS EQUIPMENT FEEDS BY MULTIPLE SOURCES. TOTAL RATING OF ALL OVERCURRENT DEVICES, INCLUDING MAIN SUPPLY DISCONNECT DEVICE, SHALL NOT EXCEED CAPACITY OF BUSBAR.

⚠️ WARNING

SEE INSTRUCTIONS FOR PROPER WIRING AND CONNECTIONS. ALWAYS USE THE CORRECT WIRING TECHNIQUE AND FOLLOW THE WIRING DIAGRAMS PROVIDED WITH THE EQUIPMENT.

⚠️ WARNING

PHOTOVOLTAIC SYSTEM COMBINER PANEL

DO NOT ADD LOADS

WARNING
ELECTRIC SHOCK HAZARD
DO NOT OPEN THE DOOR
UNTIL THE POWER IS
OFF AND THE SYSTEM
IS COMPLETELY
DISCONNECTED

PROTECTOR SYSTEM
AC DISCONNECT

WARNING
DUAL POWER SUPPLY
ACROSS PHASES
DO NOT TOUCH
INTERNAL PARTS

WARNING

CAUTION
ELECTRIC SHOCK
Hazard

**SOLAR PV SYSTEM EQUIPPED
WITH RAPID SHUTDOWN**



When the system is equipped with rapid shutdown, the system will automatically shut down the DC output of the solar panels in the event of a fire or other emergency. This feature is required by the National Electrical Code (NEC) for all new solar PV systems installed after January 1, 2016.

WARNING
ELECTRIC SHOCK HAZARD
DO NOT OPEN THE DOOR
UNTIL THE POWER IS
OFF AND THE SYSTEM
IS COMPLETELY
DISCONNECTED

**RAPID SHUTDOWN
SOLAR PV SYSTEM**

PROTECTOR SYSTEM
AC DISCONNECT

WARNING















Tommy Miller
420 Mill Bend Dr.
Fuquay-Varina NC

03/07/22

EW





 **ENPHASE**

IQ 7+

IQ 7+ Grid Support Inverter
For Enphase patent information, refer to:
<http://enphase.com/company/patents/>

Power Factor Range: +0.95
DC input range: 16 - 60V
Max. input short-circuit current: 15A
Max. input continuous current: 12A
AC output voltage: 200 / 240V
AC output current: 1.20 / 1.31A
AC output frequency: 60Hz
AC output power (max. continuous): 290VA
Operating temperature: -40°C to +45°C
Ingress protection: IP65A Type 5
Photovoltaic Rapid Shutdown Equipment
NEC 690.17 and C22.1.2013 rule 64-218
UL1741 SA Compliant / Assembled in Mexico



This device complies with part 15 of the FCC Rules. Operation is subject to the following two conditions: (1) This device may not cause harmful interference. (2) This device must accept any interference received, including interference that may cause undesired operation.



CAUTION: RISK OF SHOCK. WARRANTY VOID IF COVER REMOVED. NO USER SERVICEABLE PARTS INSIDE. REFER SERVICING TO QUALIFIED SERVICE PERSONNEL.

WARNING. ELECTRIC SHOCK HAZARD. DC CONDUCTORS OF THIS PHOTOVOLTAIC SYSTEM ARE UNGROUNDING AND MAY BE ENERGIZED. AC AND DC VOLTAGE SOURCES TERMINATE INSIDE THIS EQUIPMENT. DISCONNECT BOTH BEFORE SERVICING. PHOTOVOLTAIC ARRAY SUPPLIES A DC VOLTAGE TO THIS EQUIPMENT WHEN EXPOSED TO LIGHT. HOT SURFACES TO REDUCE THE RISK OF BURNS - DO NOT TOUCH.

ATTENTION. RISQUE D'ELECTROCUTION. LES CONDUCTEURS CC DE CE SYSTEME PHOTOVOLTAIQUE NE SONT PAS RELIES A LA TERRE ET PEUVENT ETRE SOUS TENSION. DES SOURCES DE TENSION CA ET CC SONT CONNEXEES A CE APPAREIL. SOULEZ LES DELIX SOURCES AVANT TOUTE INTERVENTION. LES CABLES COURANT CONTINU SONT SOUS TENSION MORSQUE LE CHAMP PHOTOVOLTAIQUE EST EXPOSE A LA LUMIERE. RISQUE DE BRULURE. NE PAS TOUCHER.









U.S. AIR FORCE
100-10
100-10
100-10



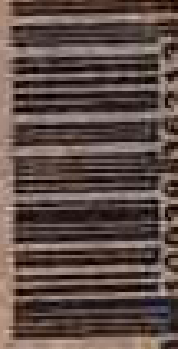


FLASHKIT SFM SLIDER S

004271D



FLASHKIT SFM SLIDER S COMP DRK
DARK Pack Size: 10
Factory Code: 5-1



WIDPO# 0044543-00 Manufacture date: 9/30/21-10/30/21

1003936213016

#UNIRAC



25607720
The Original 25' Poly Pipe

See the UNIRAC
Account's Web



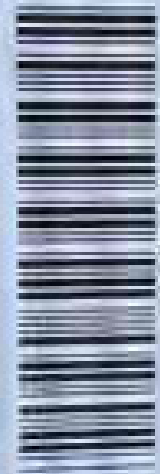
Call 1-800-854-7777 for more information and
to see the UNIRAC Account's Web



UNIRAC[®]

BETTER SOLAR STARTS HERE

www.unirac.com



250111U

SFM TRIMRAIL UNIV CLIP W/HDW

Pack Size - 10

WO/PO # 044-196-03

Manufacture date :09/2021

Factory Code: 025A



1003936119

1

California Proposition 65 - WARNING: Cancer and Reproductive Harm - www.P65Warnings.ca.gov



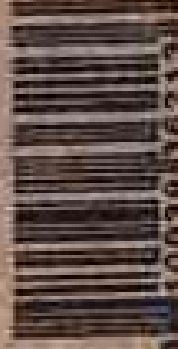


FLASHKIT SFM SLIDER S

004271D



FLASHKIT SFM SLIDER S COMP DRK
DARK Pack Size: 10
Factory Code: 5-1



WIDPO# 0044543-00 Manufacture date: 9/30/21-10/30/21

1003936213016

 **UNIRAC**[®]

BETTER SOLAR STARTS HERE

www.unirac.com



2 5 3 0 2 0 U

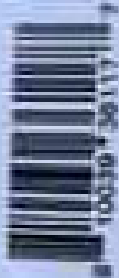
SFM MICRORAIL 2"

Pack Size: 10

WO/POINT : 00452665-01

Manufacture date: **DEC 2021**

Factory Code : 010A



100330 4 36111 7















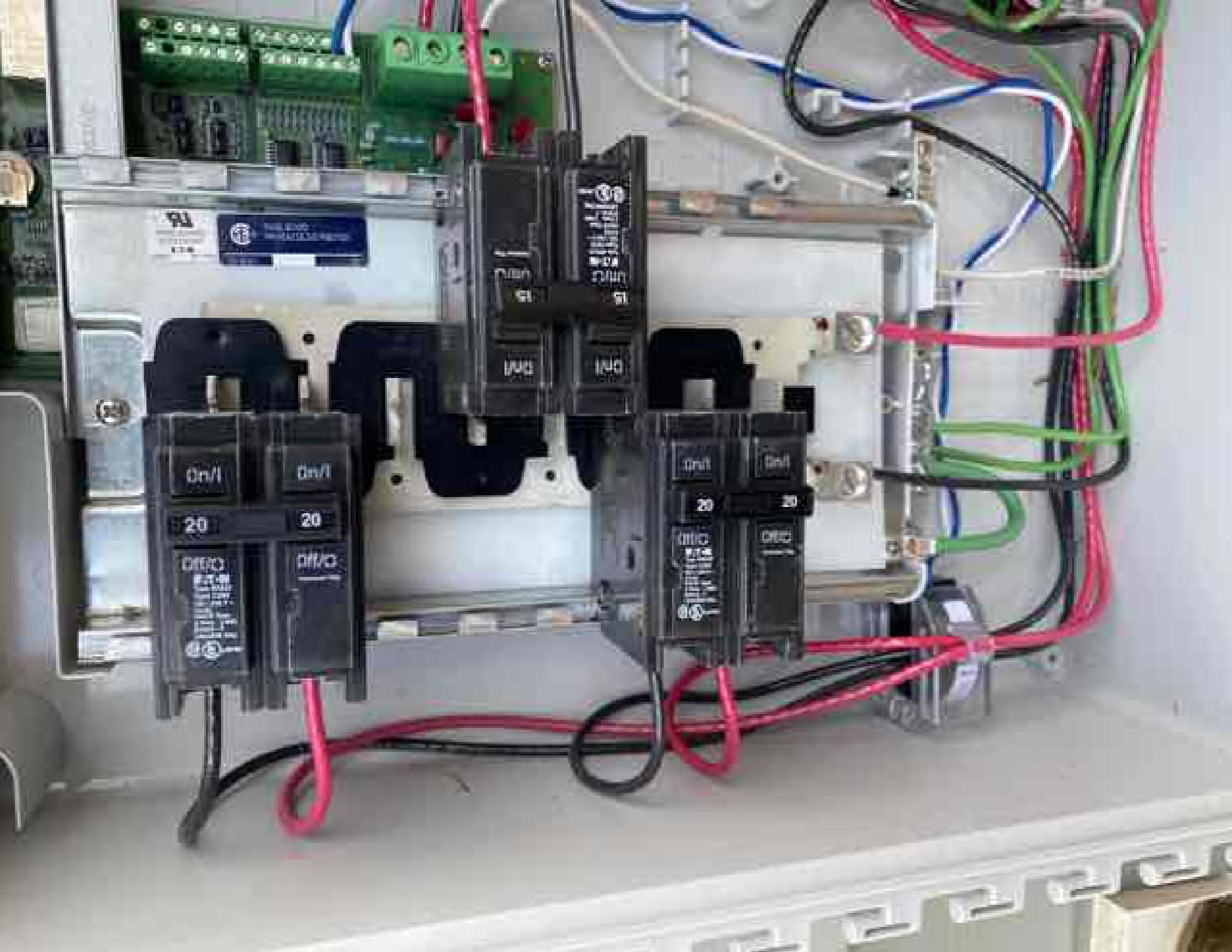








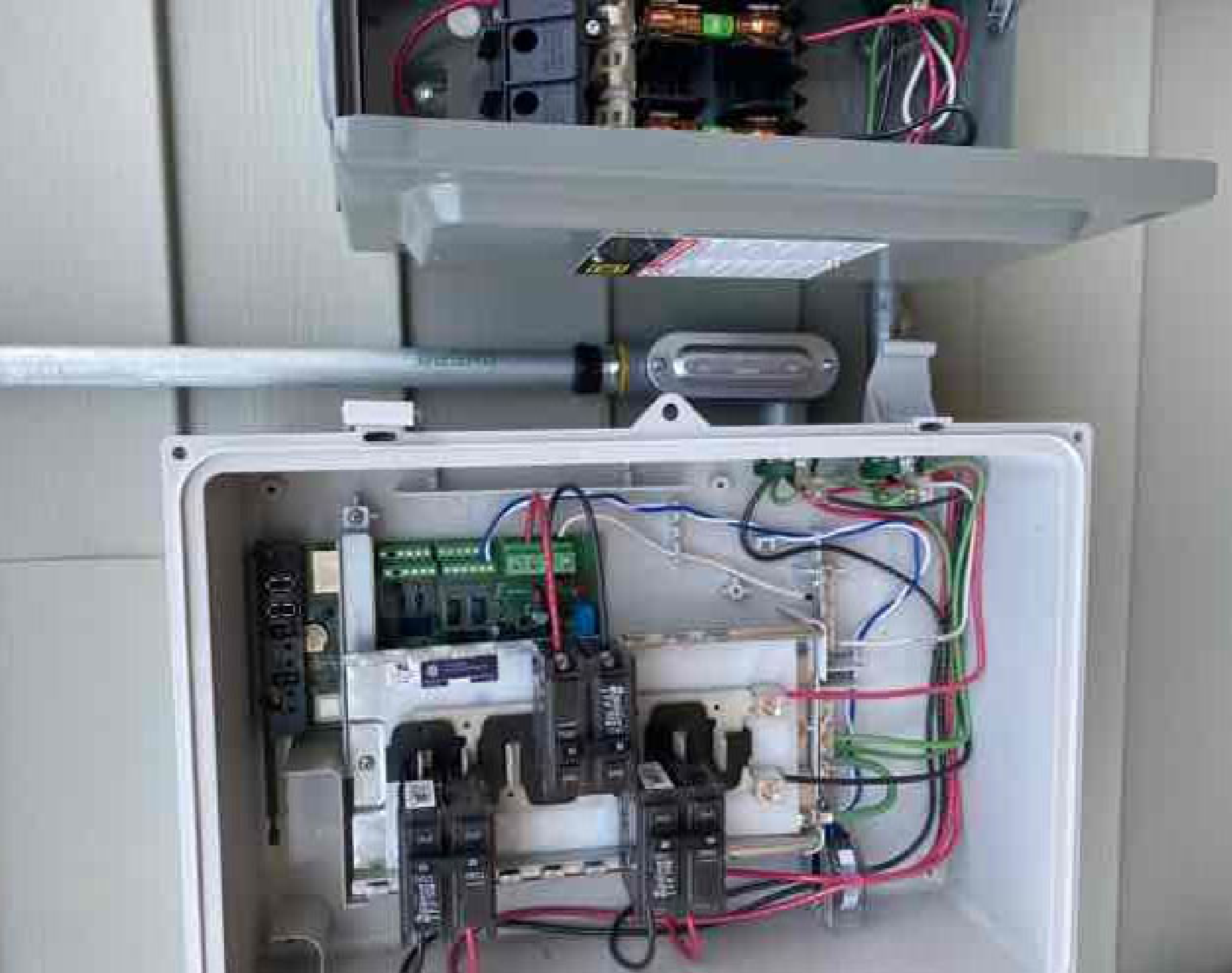
















Tommy Miller
420 Mill Bend Dr.
Fuquay-Varina NC

03/07/22

EW















202126066280

202126067922

202126073694

202126072729

202126068712

202126069236

202126073060

202126064535

202126073548

202126073066

202126073065

202126072094

202126066965

202126072973

202126049075

REG4000A Print
Printed: 400.00
Length: 9.501 in
Weight: 42.7 g



A ADVERTENCIA
Este equipo es un producto de la línea de productos de la serie 1000 de la marca Schneider Electric. El uso de este equipo requiere un técnico calificado en electricidad. No se debe intentar reparar o modificar este equipo sin la asistencia de un técnico calificado. El uso incorrecto de este equipo puede causar lesiones personales o daños materiales. Consulte el manual de instrucciones para obtener más información. Schneider Electric S.p.A. - Via Salaria 115 - 00198 Roma - Italia - Tel. +39 06 49821 - Fax +39 06 49822 - E-mail: info@schneider-electric.com

MAIN PRINCIPAL

1/20N

200

REPLACE FUSE ONLY WITH IDENTICAL RATED FUSE































