









CREW

APC

















120VOLT/1A/C SOURCE

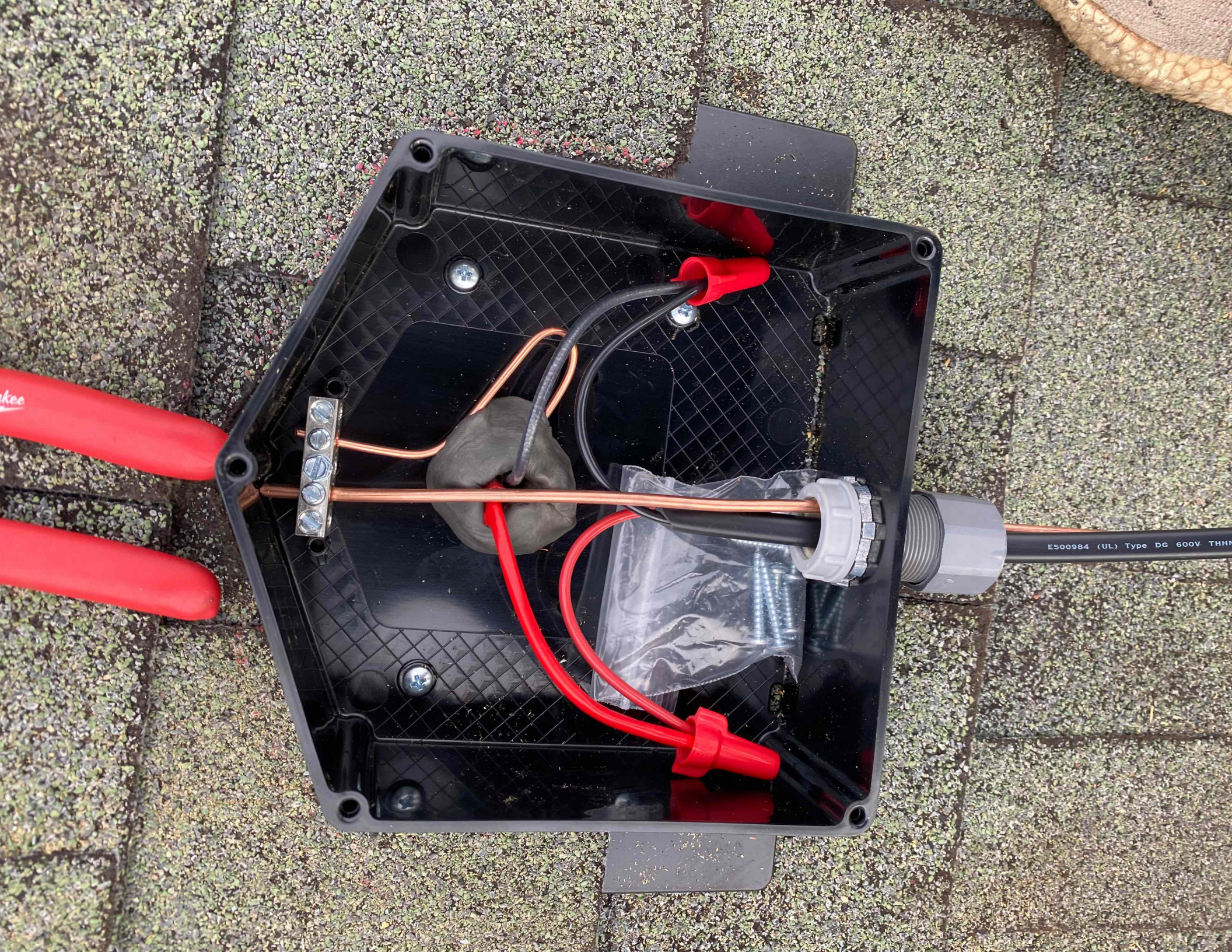






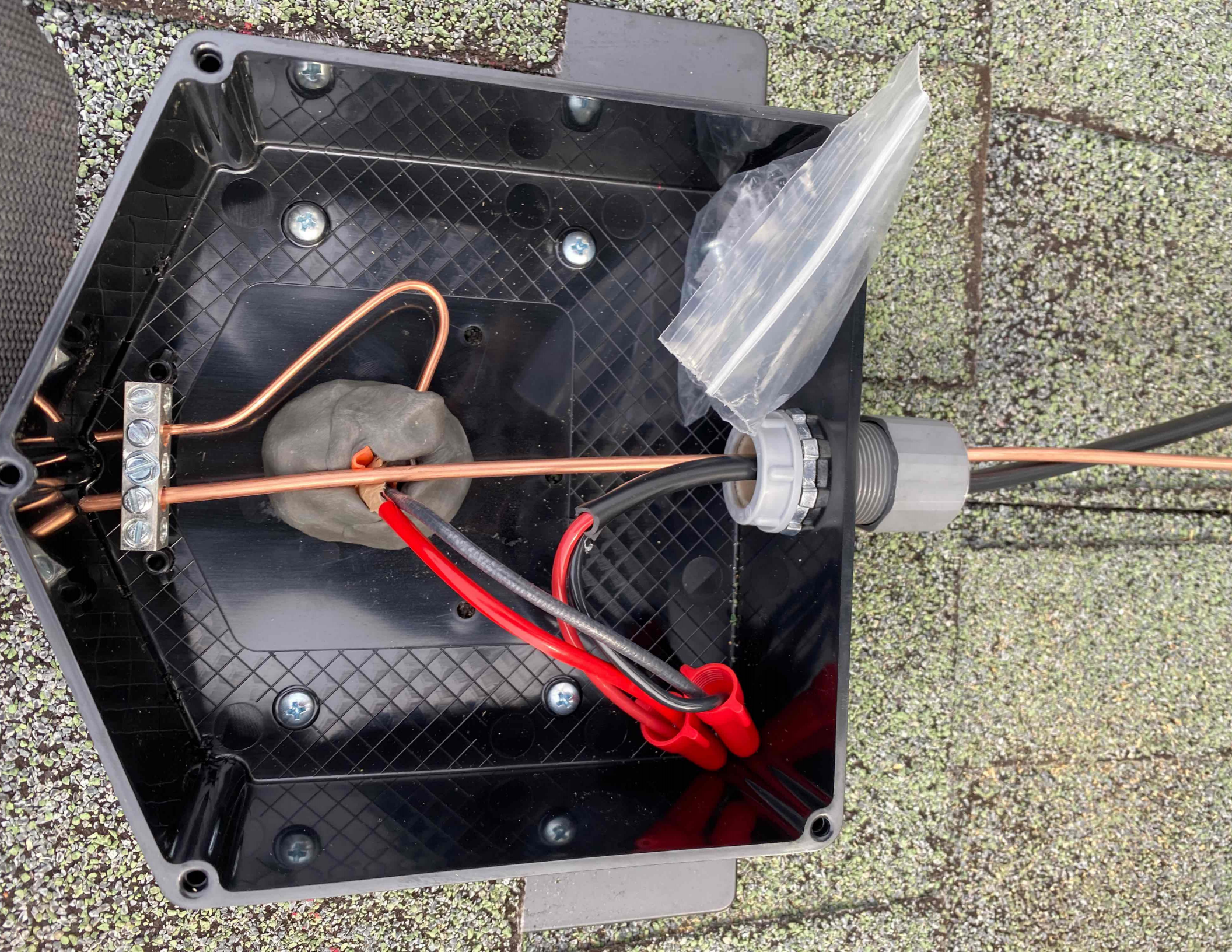
Randall Crawford
80 Viola Ln.
Angier
Elec: Mitchen
Nguyen



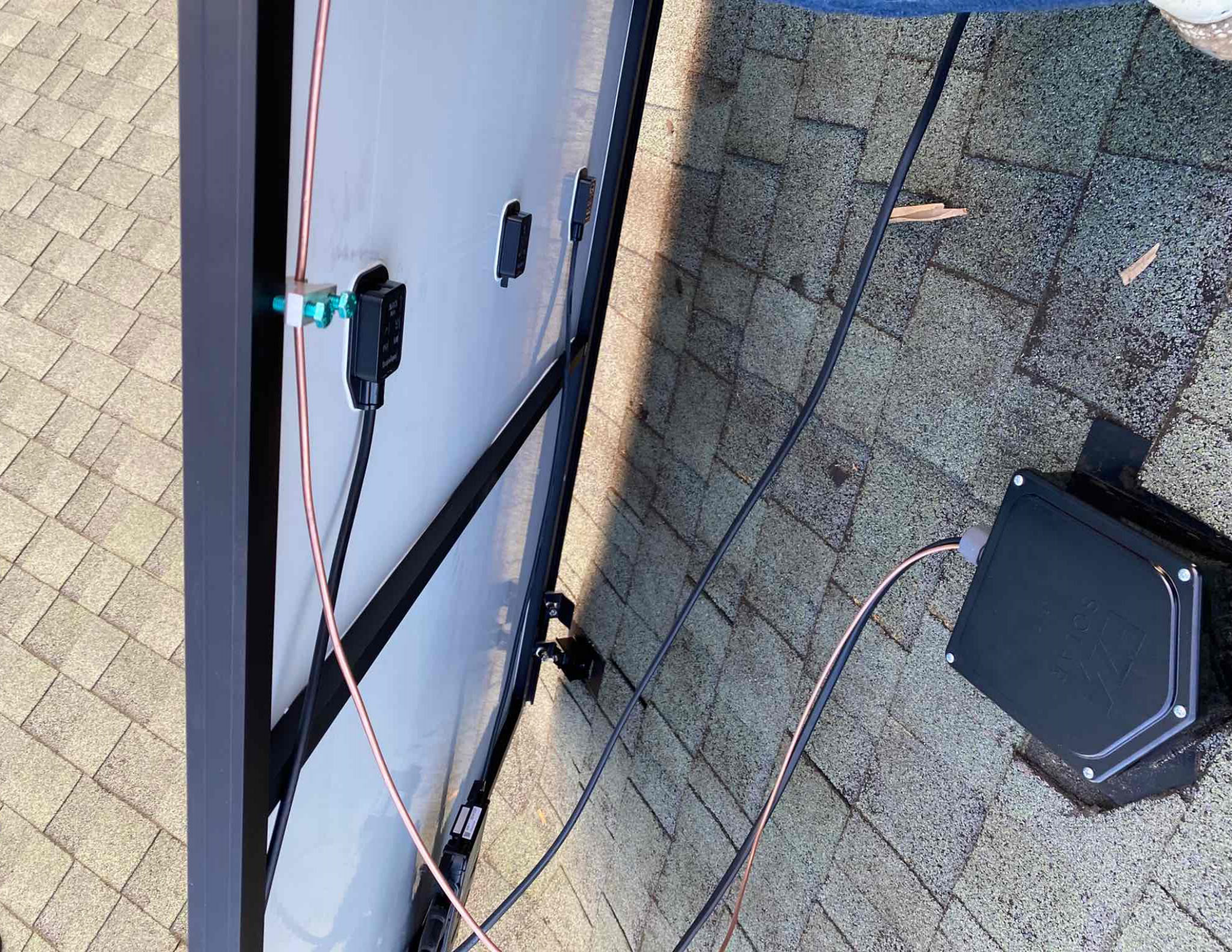


E500984 (UL) Type DG 600V THHN

kee









Randall Crawford
80 Viola Ln.
Angier
Elec: Mitchen
Nguyen





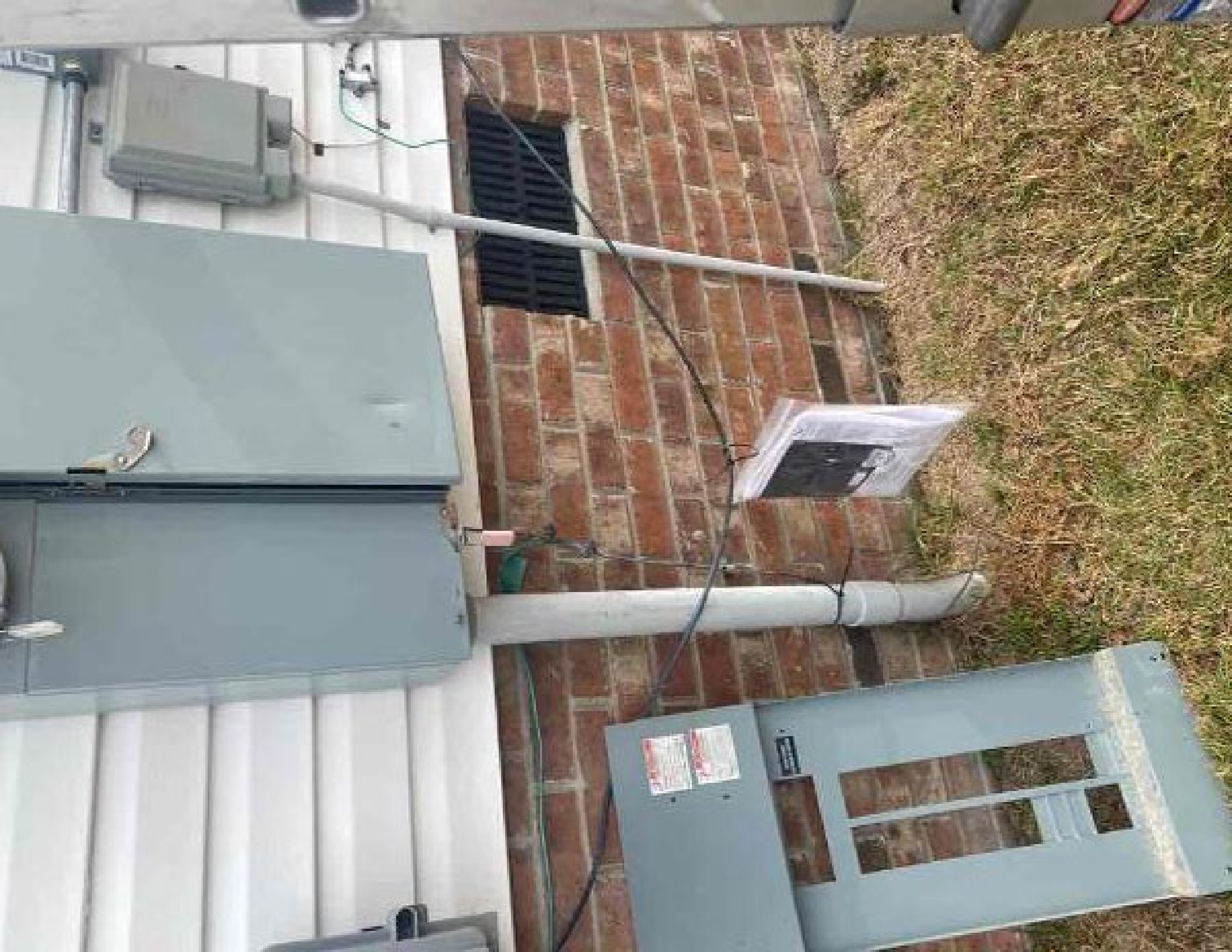




147

250VAC 20A
+79°C 2033

UL
CERTIFIED
LISTED
E486060



ENPHASE
IQ7+

Go to enphase.com for more information.
For detailed safety information, please go to
<http://enphase.com/safety>

Model: IQ7+
Part Number: IQ7+
Max. Output Power: 750W
Max. Output Current: 10A
AC Input Voltage: 120V/240V
AC Input Frequency: 50/60Hz
AC Output Voltage: 48V
Open-circuit voltage: 60V
Rated Output Power: 750W
Rated Output Current: 15.6A
Product Code: ENPH-IQ7+
ENPH-IQ7+ is a registered trademark of Enphase.



This device complies with part 15 of the FCC Rules. Operation is subject to the following conditions: (1) This device may not cause harmful interference. (2) This device must accept any interference received, including interference that may originate from radio communications systems.

CAUTION: RISK OF SHOCK AND BURNING
DO NOT TOUCH STRAY METAL SURFACES WITH YOUR HANDS TO AVOID A SHOCK OR BURNING.

WARNING: EYE, SKIN, HEAVY METAL, AND HEARING HAZARDS
AC POWER IS APPLIED TO THE SYSTEM. CONTACT WITH METAL SURFACES, INCLUDING METAL TOOLS, MAY CAUSE ELECTRICAL SHOCK, BURNING, OR HEAVY METAL EXPOSURE. WEAR APPROPRIATE PROTECTIVE EQUIPMENT, INCLUDING GLOVES, SAFETY GLASSES, AND HEARING PROTECTION, TO AVOID THESE HAZARDS. TO PREVENT HEAVY METAL EXPOSURE, DO NOT TOUCH THE METAL SURFACES OF THE SYSTEM.

ATTENTION: RISK OF ELECTRIC SHOCK
DO NOT TOUCH METAL SURFACES WITH YOUR HANDS TO AVOID A SHOCK OR BURNING. WEAR APPROPRIATE PROTECTIVE EQUIPMENT, INCLUDING GLOVES, SAFETY GLASSES, AND HEARING PROTECTION, TO AVOID THESE HAZARDS. TO PREVENT HEAVY METAL EXPOSURE, DO NOT TOUCH THE METAL SURFACES OF THE SYSTEM.







FLASHKIT SPM SLIDER S

0042710

FLASHKIT SPM SLIDER S COMPACT
SPEAKER PHONE CASE 10
Factory Case: 8-1



0042710-10 0042710-10 0042710-10



FLASHKIT SPM SLIDER S

0042710

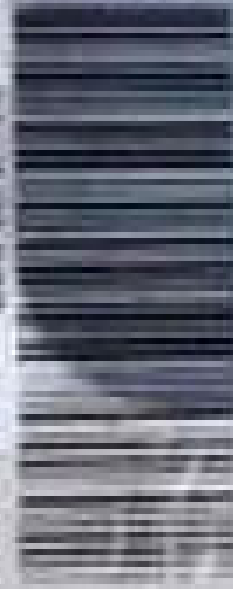
FLASHKIT SPM SLIDER S COMPACT
SPEAKER PHONE CASE 10
Factory Case: 8-1



0042710-10 0042710-10 0042710-10



 UNIRAC



250120U

50MM TRIM SPURC 250U

Trade Size

UNIRAC 0043304-00

Manufacture Date: 16-03-2021

Factory Code: 010A

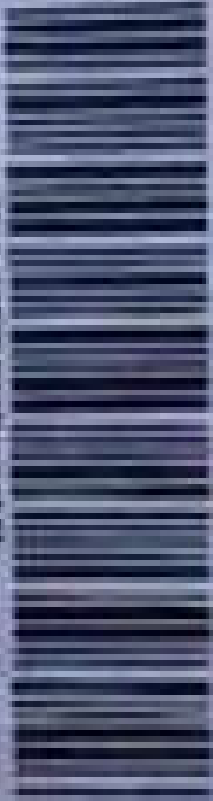




UNIRAC

BETTER SOLAR STARTS HERE

www.unirac.com



2 5 0 0 2 0 U
SFM MICRORAIL Z
Pack Size: 10

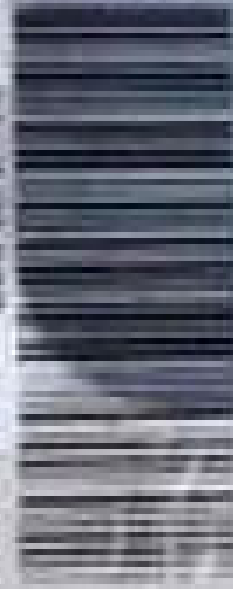
WO/PO# 00A153800

Manufacture date:

Factory Code : 010A



 **UNIRAC**
SATA TRIM SPINDLE



250120U

SATA TRIM SPINDLE

Pack Size

UNIRAC 0043304-00

Manufacture Date: 16-03-2017

Factory Code: 010A

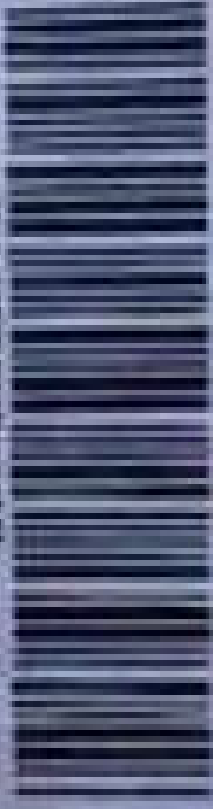




UNIRAC

BETTER SOLAR STARTS HERE

www.unirac.com



2 5 0 0 2 0 U
SFM MICRORAIL Z
Pack Size: 10

WO/PO# 00A153800

Manufacture date:

Factory Code : 010A











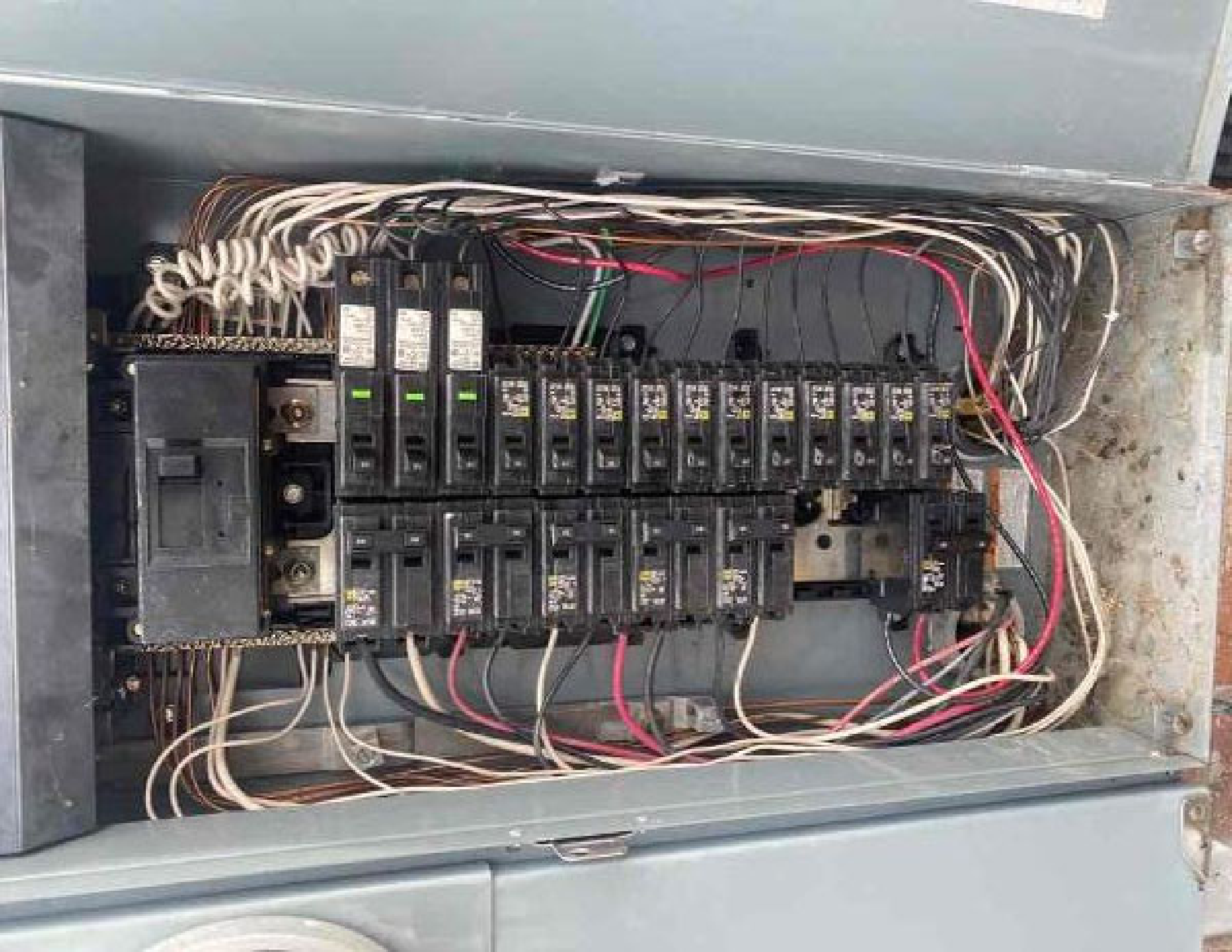


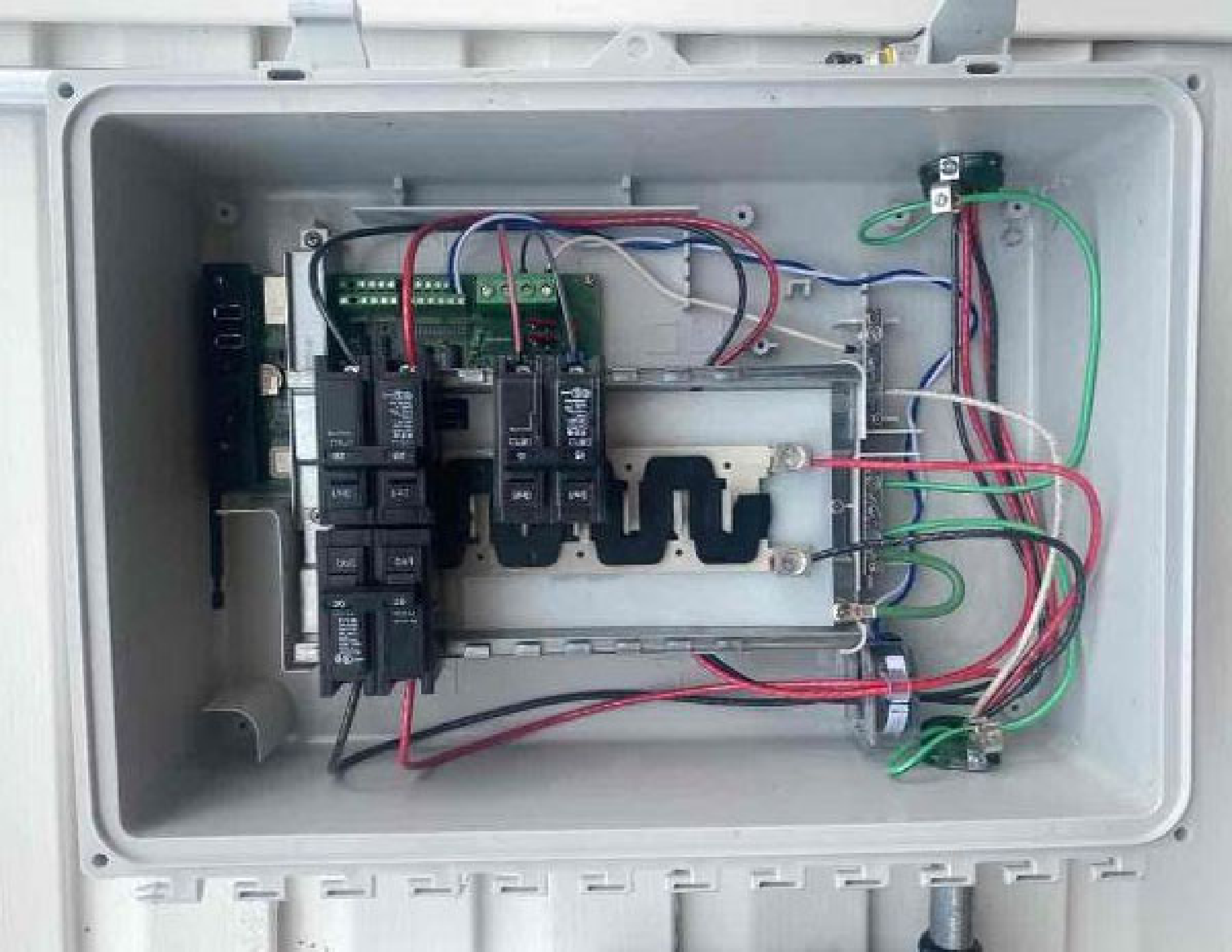
2130

Model 2130 1000 1000 1000

1000 1000 1000









Microinverters & Array

- Scanned : 0/18
- ✓ Array created : 2
- Array assigned : 0



Scan completed

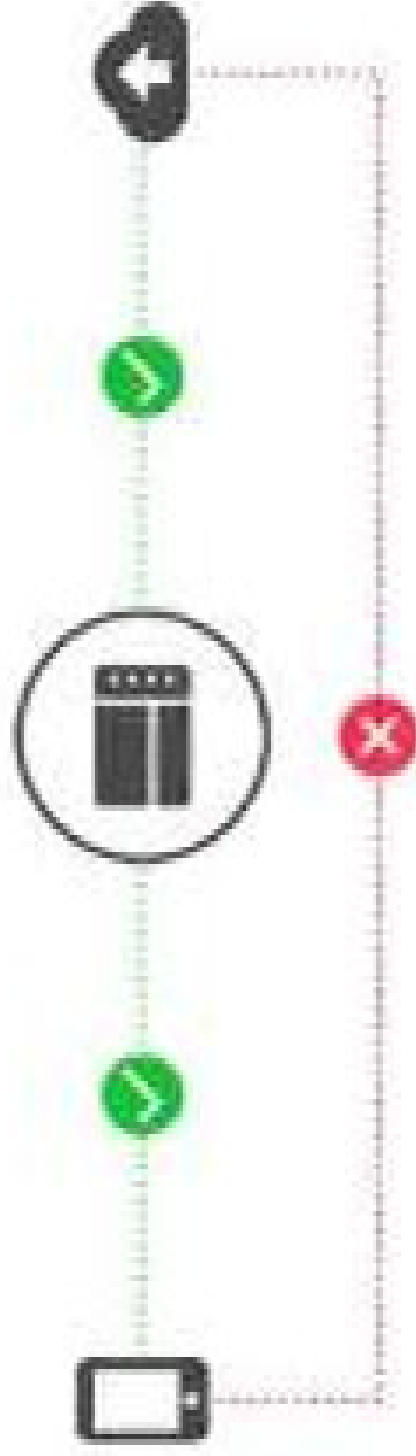
Microinverters : 18/18

AC Batteries : 0/0

DONE

Start Provisioning Devices

Envoy 202139001720



Envoy successfully connected to Enlighten and Installer Toolkit

Envoy Connectivity Status



Wi-Fi

192.168.1.194

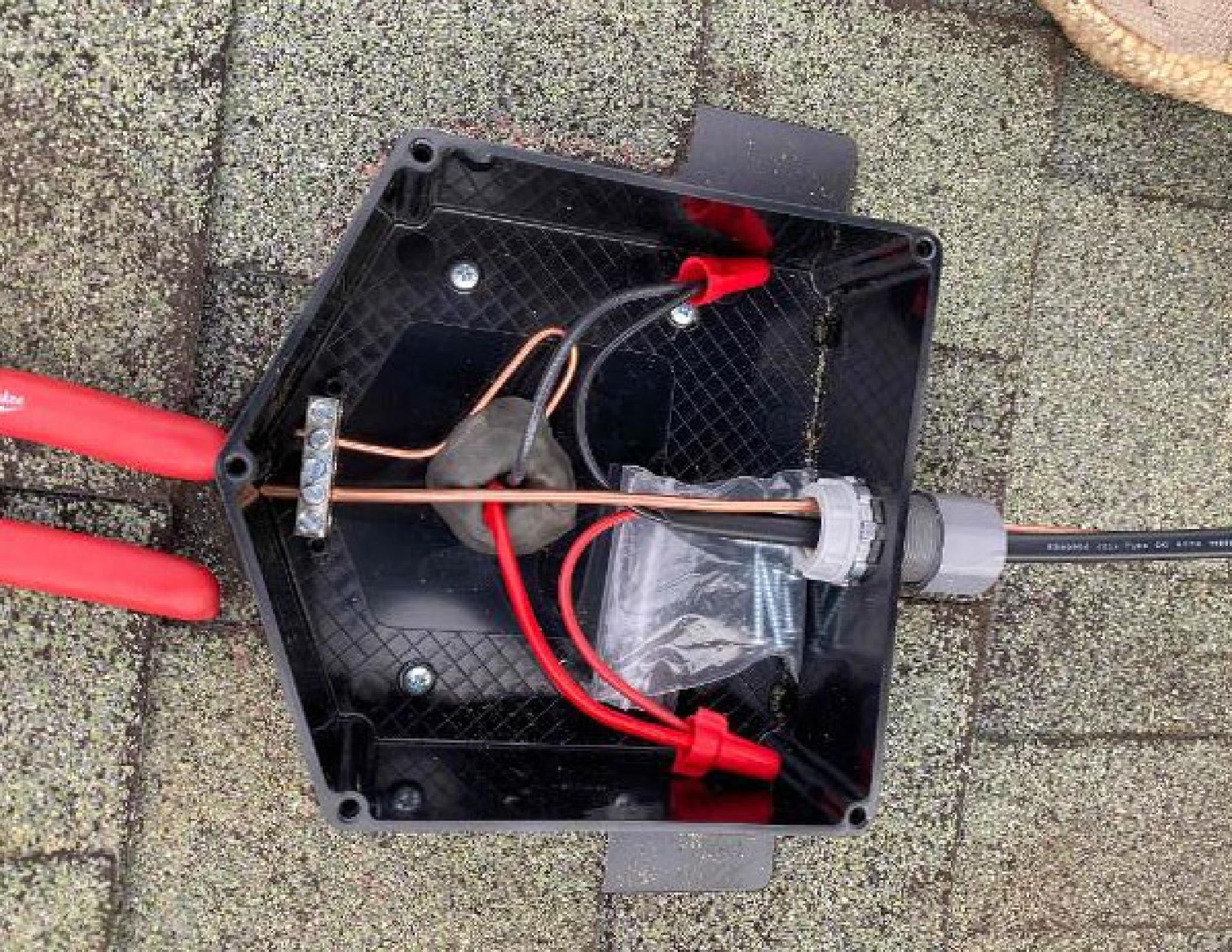
Connected >

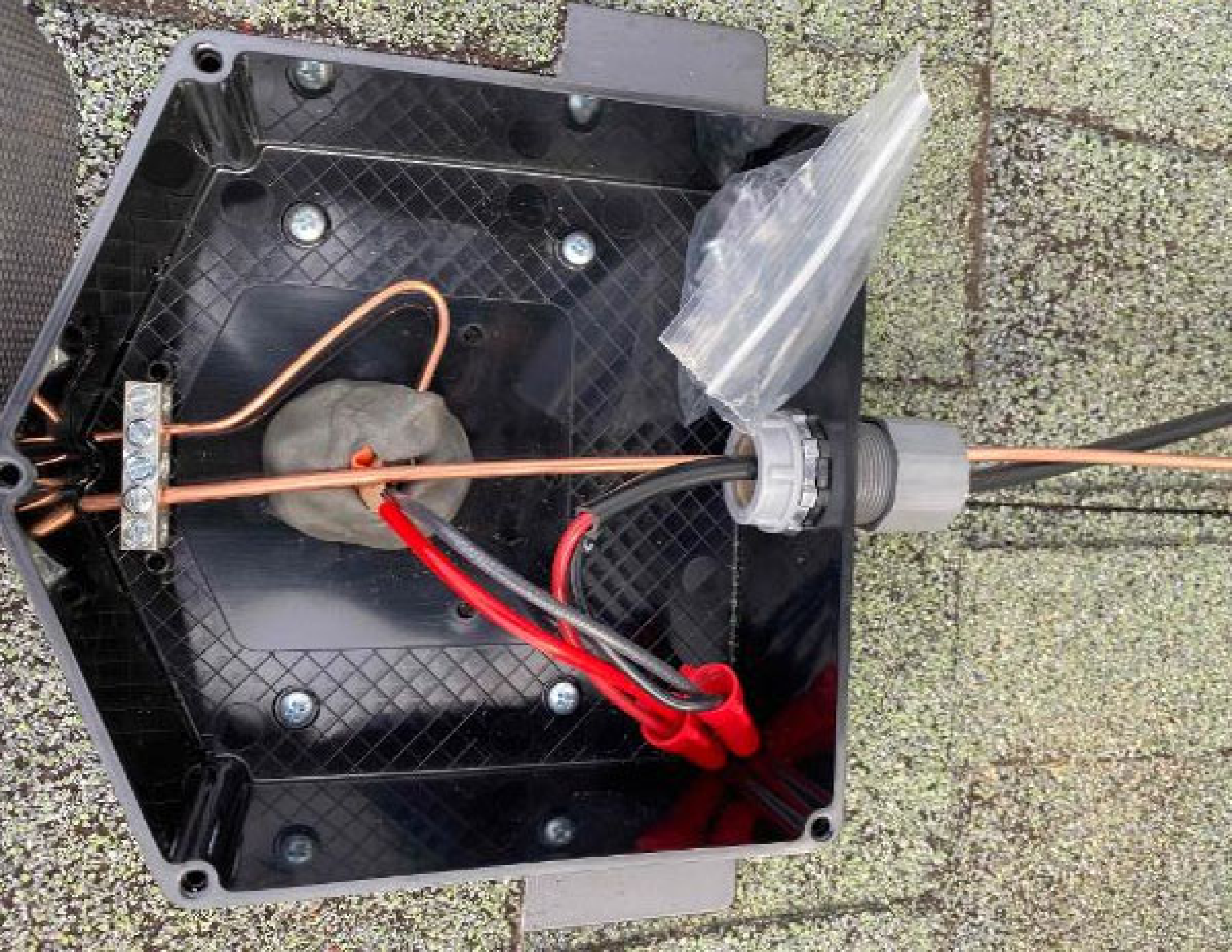


Ethernet



Cellular







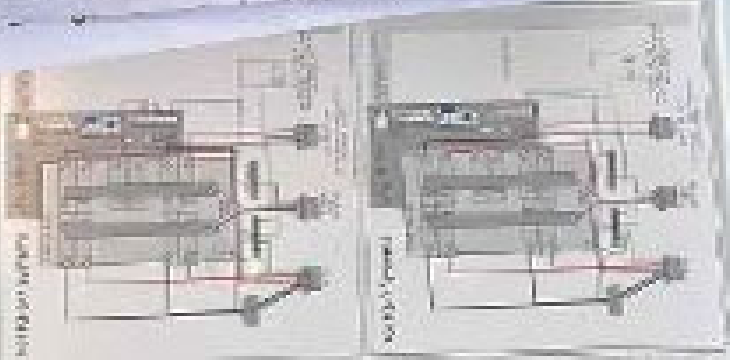




CAUTION: SOLAR

CAUTION

Wiring diagram and technical specifications for the meter and associated components. The diagram shows the connection of wires to the meter and other components. The text includes labels for "NORTH" and "SOUTH" and shows the connection of wires to the meter and other components.



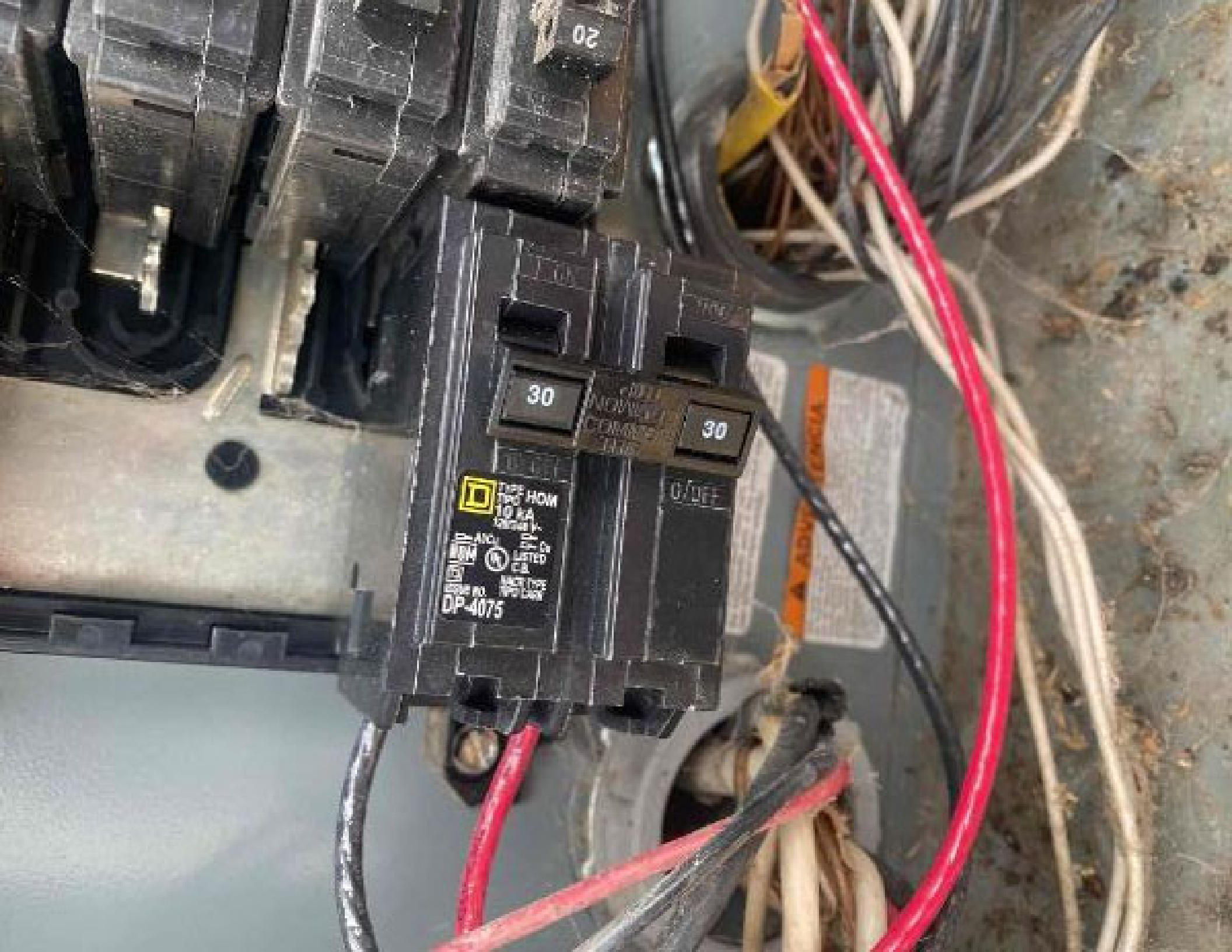


SUNSHINE

1 2 3 4 5 6 7 8 9 10 11 12 13 14 15







20

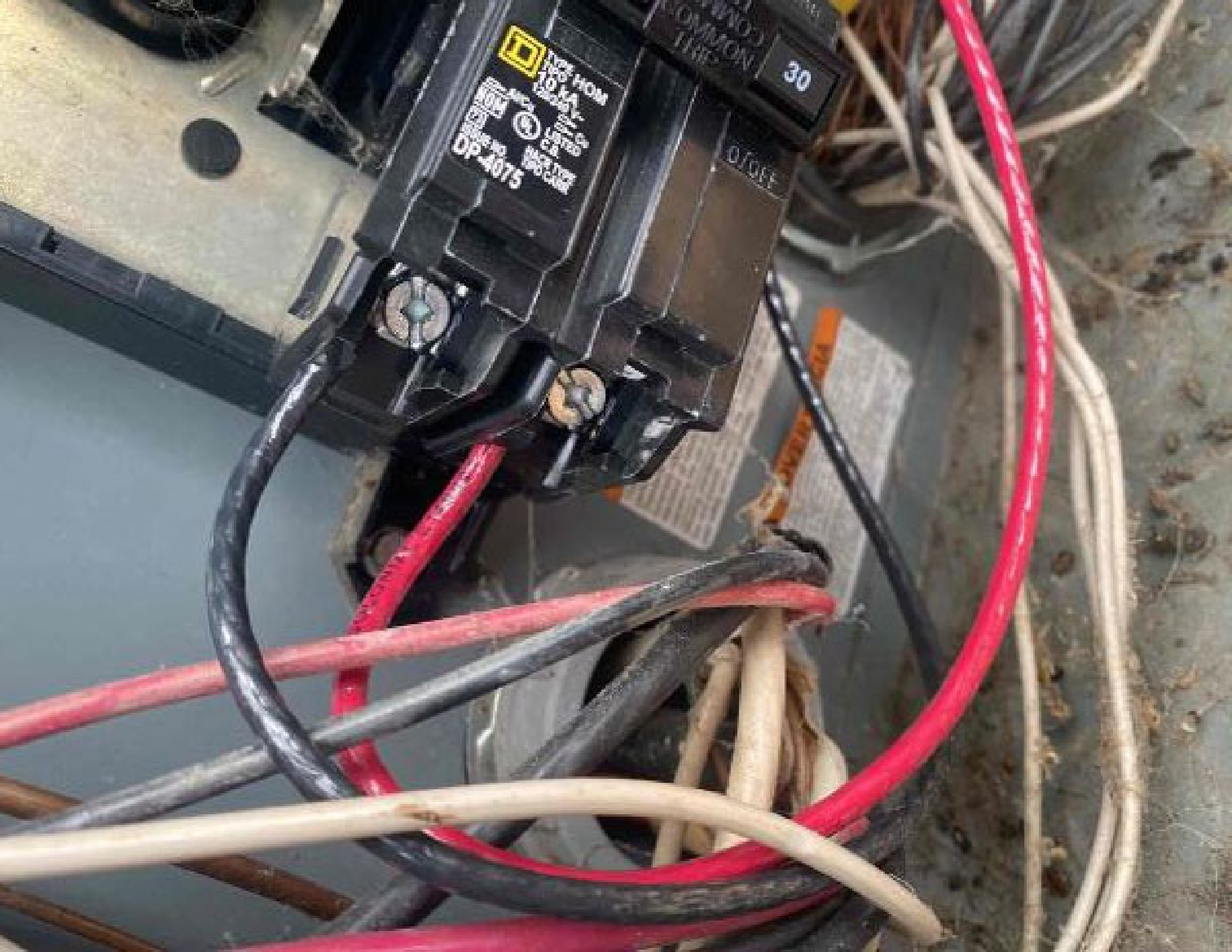
30

30

CAUTION
DO NOT
EXPOSE
TO FIRE

 TYPE HOM
10 KA
120V AC
LISTED CB
DPDT
MILITARY
NEMA DP-4075

0/OFF



TYPE HOMR
10 kA
120/240V
1P
DP-4075

30

OFF





ALSO LISTED AS
BRANCH/FEEDER
AFCI
ISSUE NO.
P-2,541
HACR Type
SMD
A/Cu
60 Hz
6075-C
62

ALSO LISTED AS
BRANCH/FEEDER
AFCI
ISSUE NO.
P-2,541
HACR Type
SMD
A/Cu
60 Hz
6075-C



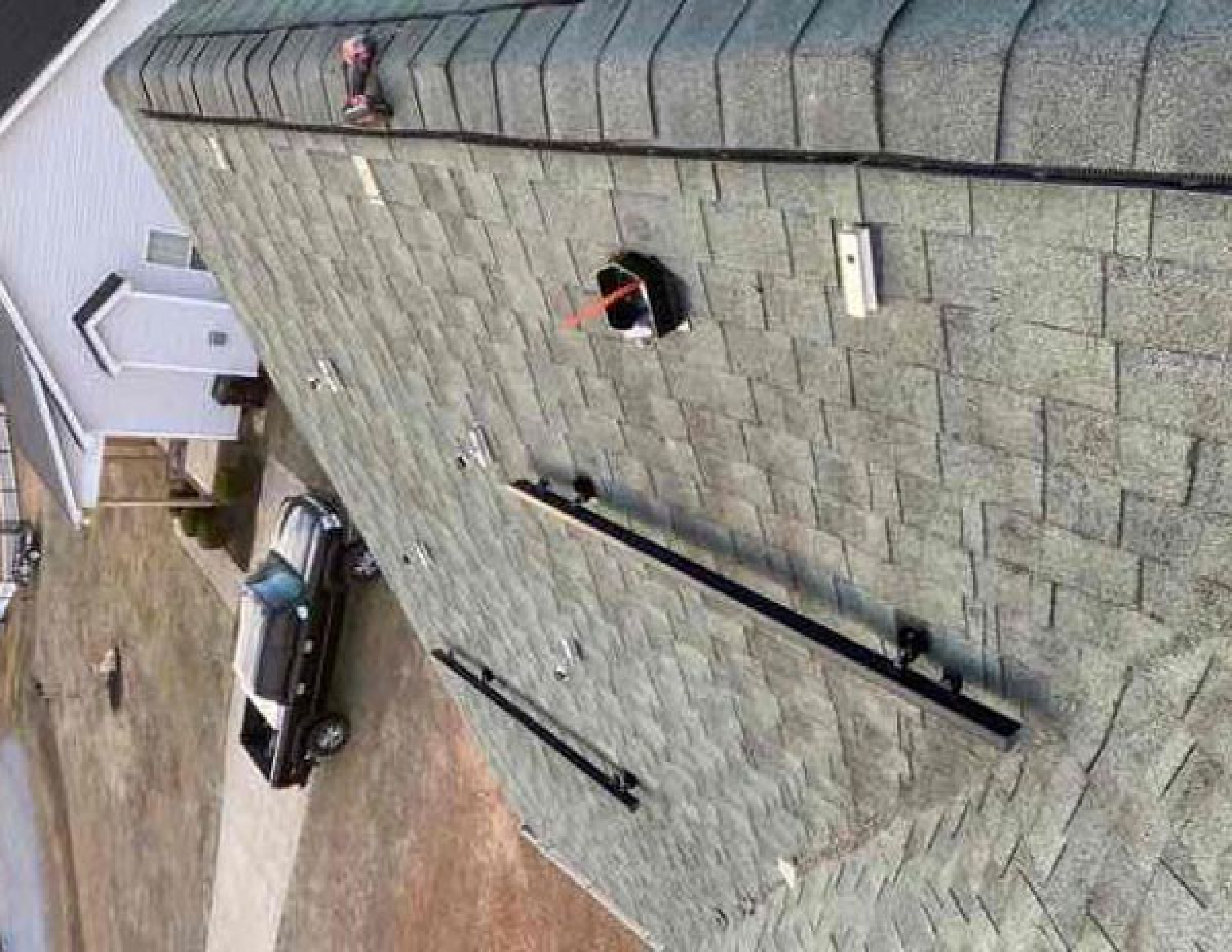
















REC

REC Alpha Pure Series
REC4000AA Pure

Serial Number: FB84009095242

Power Output (Pmax)

Watt Class Sorting

Power Production Tolerance

Rated Voltage (Vnpp)

Rated Current (Inpp)

Short Circuit Voltage (Voc) (+/- 3%)

Maximum System Voltage (Vsys)

Maximum Series Fuse (DC) (UL)

Maximum Series Fuse (DC) (IEC)

Design Load

Maximum Test Load

(Value at STC: 1000 W/m² AM 1.5, cell temp 25 °C)

See instructions manual for Temperature Coeff. at 25 °C (see page 27 °C)

or additional requirements for 200 and 400 W series. See also

Phone: +65 6488 8022
www.recgroup.com



INTERNATIONAL
SOLUTIONS

• Evaluation by
ETL (E71511)
• Compliance
CUL and CUL Listed
• UL Recognized Component



REC ALPHA
• 80 W/100 W



Manufactured on: 05.09.2021



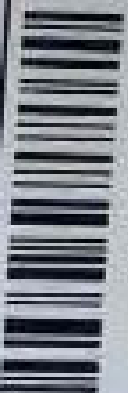
Warning electrical hazard. This model product includes what is exposed to light.
CAUTION: DO NOT DISCONNECT UNDER LOAD
Avertissement: Risque de choc électrique. Ce modèle se compose de l'exposé (à l'usage)
et exposé à la lumière.

ATTENTION: NE PAS DECONNECTER SOUS TENSION

For field connections, use min. 6 mm² AWG UL PV wire insulated for a min. of 60°C

Made in Singapore by REC SOLAR PTE. LTD

20 THIRU SOUTH AVENUE 15, SINGAPORE 630312, SINGAPORE



... Off if all inverters are not communicating with Enphase
... Usually amber during firmware and off at night

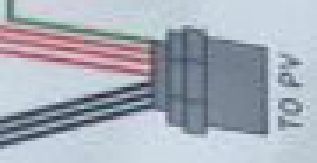


Device status button

Only used by installer during installation or to configure the system.
Starts with a 15-minute timer for devices over the power line.

All LEDs

- ... Flashing green when soft reset complete or in progress.
- ... Flashing amber when in Enphase booting up.



TO PV



IQ Combiner 3 ES

Photovoltaic
Combiner Box
X-IQ-AM1-240-3-ES



Electrical ratings

Voltage 240VAC, 60Hz
DC Breakers 80A MAX (com-bus)
DC Input 5-15 600V (com-bus)
Output 60A/100A, 1/0A MAX FEEDER COPD
Temperature -45 to 140°C ambient
Use only 5/8" or larger busbars (100A max)

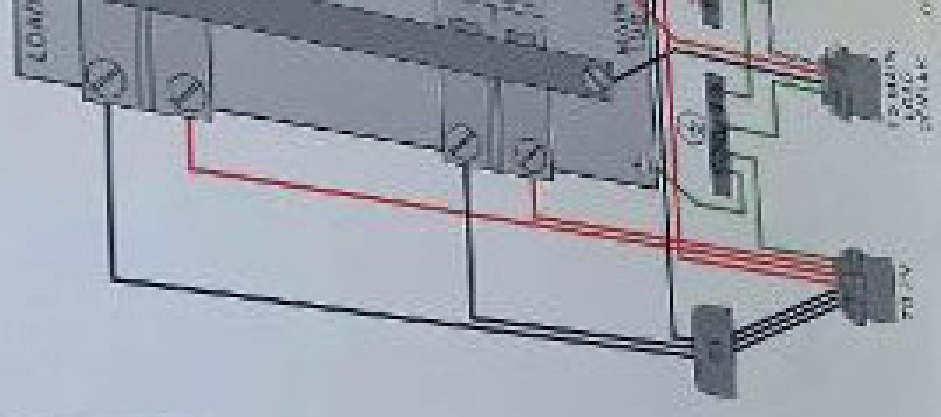


**Reduction color with DC combiner box - do not add loads to other
branch position - not good for protection**

Combiner Configuration	Max. Amps	Max. Voltage	Max. Power
60A (1/0A) 100A only	100A	600V	60kW
100A (1/0A) 100A only	100A	600V	60kW
100A (1/0A) 100A only	100A	600V	60kW
100A (1/0A) 100A only	100A	600V	60kW

Combiner box must be installed with 1/2" or larger busbars.
Busbar must be installed with 1/2" or larger busbars.
Busbar must be installed with 1/2" or larger busbars.

For IQ-8 Systems







REC

REC Alpha Pure Series
REC400AA Pure
Serial Number: F0B-1009096288

Phone: +86 6420 8222
www.recgroup.com

Power Output (Pmax)

400 W

Watt Class Sorting

0 ~ 5 W

Power Production Tolerance

± 3 %

Rated Voltage (Wrmp)

42.1 V

Rated Current (Irmp)

9.51 A

Open Circuit Voltage (Voc) (+/- 3%)

48.8 V

Short Circuit Current (Isc) (+/- 3%)

10.25 A

Maximum System Voltage (Vsys)

1800 V

Maximum Series Fuse (DC1 (UL))

25 A

Maximum Series Fuse (DC1 (IEC))

25 A

Design Load

± 400W / 2000VA

Maximum Test Load

± 700W / ± 4000VA

Operating at 25°C, 1000W and 2000VA, the cooling fan runs 25%.

For detailed information, please refer to the REC website: www.recgroup.com

Manufactured 09.08.2021



Warning: Electrical hazard. Use correct procedure in safety when response to light.

CAUTION: DO NOT DISCONNECT UNDER LOAD.

Attention: Risque de choc électrique. Se référer aux procédures de sécurité recommandées.

ATTENTION: NE PAS DECONNECTER SOUS TENSION.

For detailed information, please refer to the REC website: www.recgroup.com





REC Alpha Pure Series
REC-400AA Pure

Serial Number: FBB-4009085877

Phone: +65 4343 8233
www.jasgroup.com

Power Output (Pmax)

Watt Class Sorting

Power Production Tolerance

Rated Voltage (Vmpp)

Rated Current (Impp)

Open Circuit Voltage (Voc)

Short Circuit Current (Isc)

Maximum System Voltage (Vsys)

Maximum Series Fuse (DC) (UL)

Maximum Series Fuse (DC) (IEC)

Design Load

Maximum Test Load

(Value at STC: 1000 W/m² AM 1.5, Air Temp 25 °C)

+400 W

0V ± 5 W

+/- 3 %

42.1 V

9.51 A

48.8 V

10.25 A

1000 V

25 A

25 A

+4000 V / 2800 Pa*

+7000 V / 4000 Pa*



ETV
Inverter
5000VA

* Certified to
UL 1741, IEC 62109-1 & 2
* Certified to
IEC 60364-411, IEC 60364-412
* 600V AC Rating Type 2*



DVE
1000VA
5000VA



UK
CA

Manufacturer: 05.09.2021

See installation manual for recommended connection configurations and
product safety warnings to ensure a safe and reliable installation.



Warning: electrical hazard. This module produces electricity when exposed to light.
CAUTION: DO NOT DISCONNECT UNDER LOAD
Avertissement: Risque de choc électrique. Ce module génère de l'électricité lorsqu'il est exposé à la lumière.
ATTENTION: NE PAS DÉCONNECTER SOUS TENSION
For field connections, see min. 4 mm² AWG (UL 29 wires insulated for a min. of 50°C)
Made in Singapore by REC SOLAR PTE LTD
25 TOMAS SOUTH AVENUE 10, SINGAPORE 627912, SINGAPORE







30

COM/MOM

30



TYPE HOMR
1PSS
10 KA
100/250 V~
100/100 VDC
LISTED U.S.
MADE TYPE
19C-1-APP
DP-4075

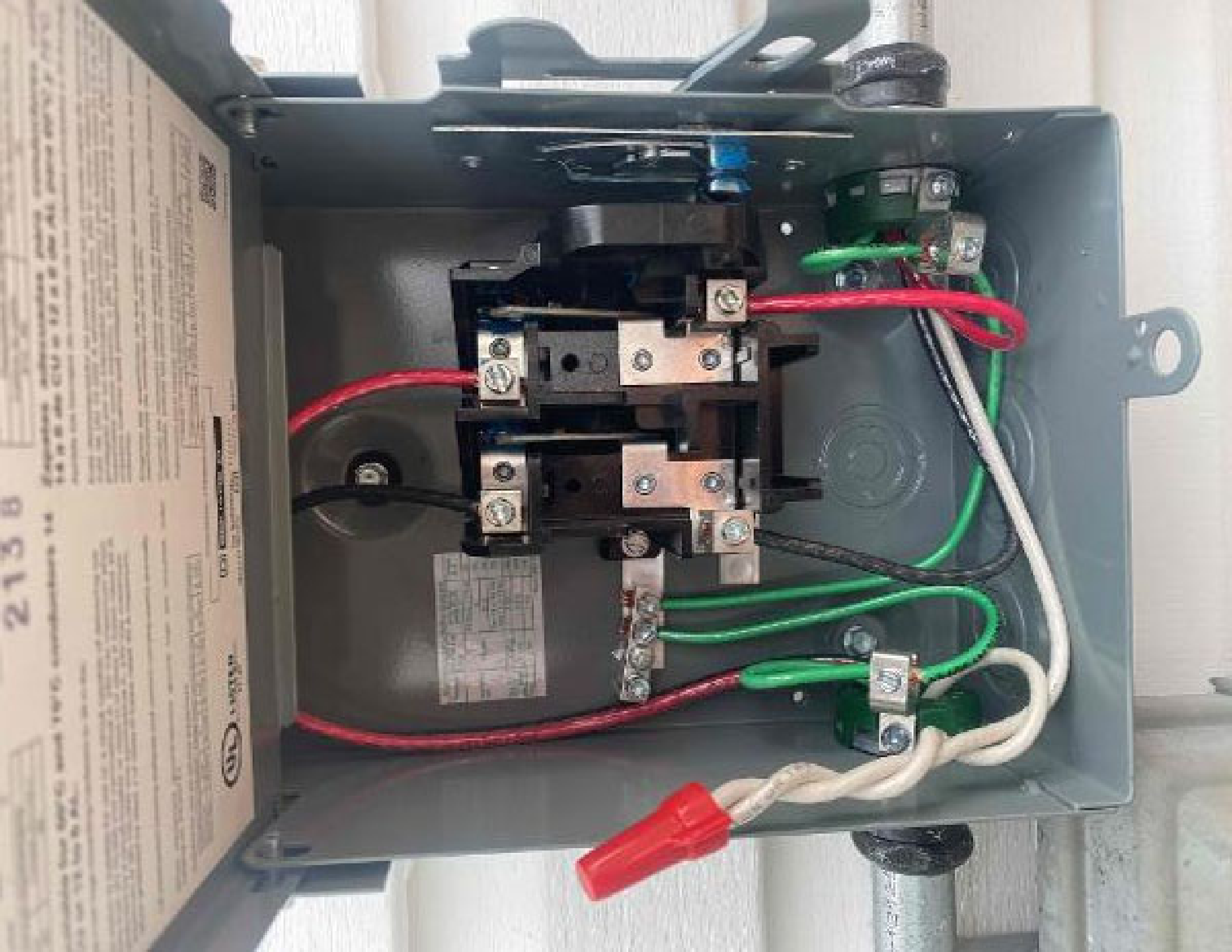
20

20

20

ADVERTENCIA

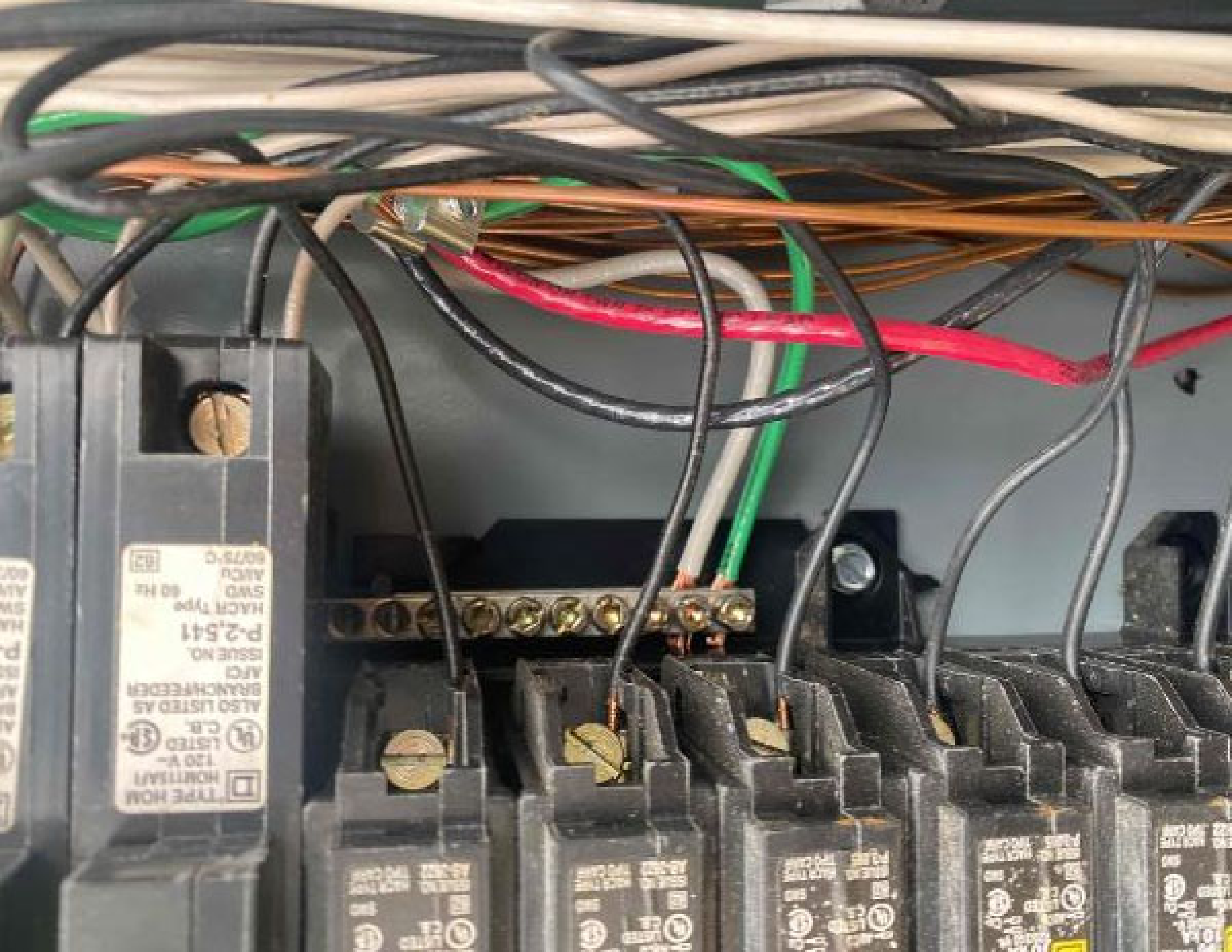
2138



WARNING: Before working on this equipment, disconnect the power supply and lock out the main power supply. Do not touch the terminals or components until the power is disconnected. The equipment is not to be used for any other purpose than that intended. The manufacturer is not responsible for any damage or injury caused by the use of this equipment. For more information, please contact the manufacturer.







TYPE HOM
120 V.
LISTED
C.B.
ALSO LISTED AS
BRANCHED
AFCI
ISSUE NO.
P-2541
HACR Type
SMD
60 Hz
9075-C

20A
120V
1000VA
C.B.
LISTED
C.B.

20A
120V
1000VA
C.B.
LISTED
C.B.

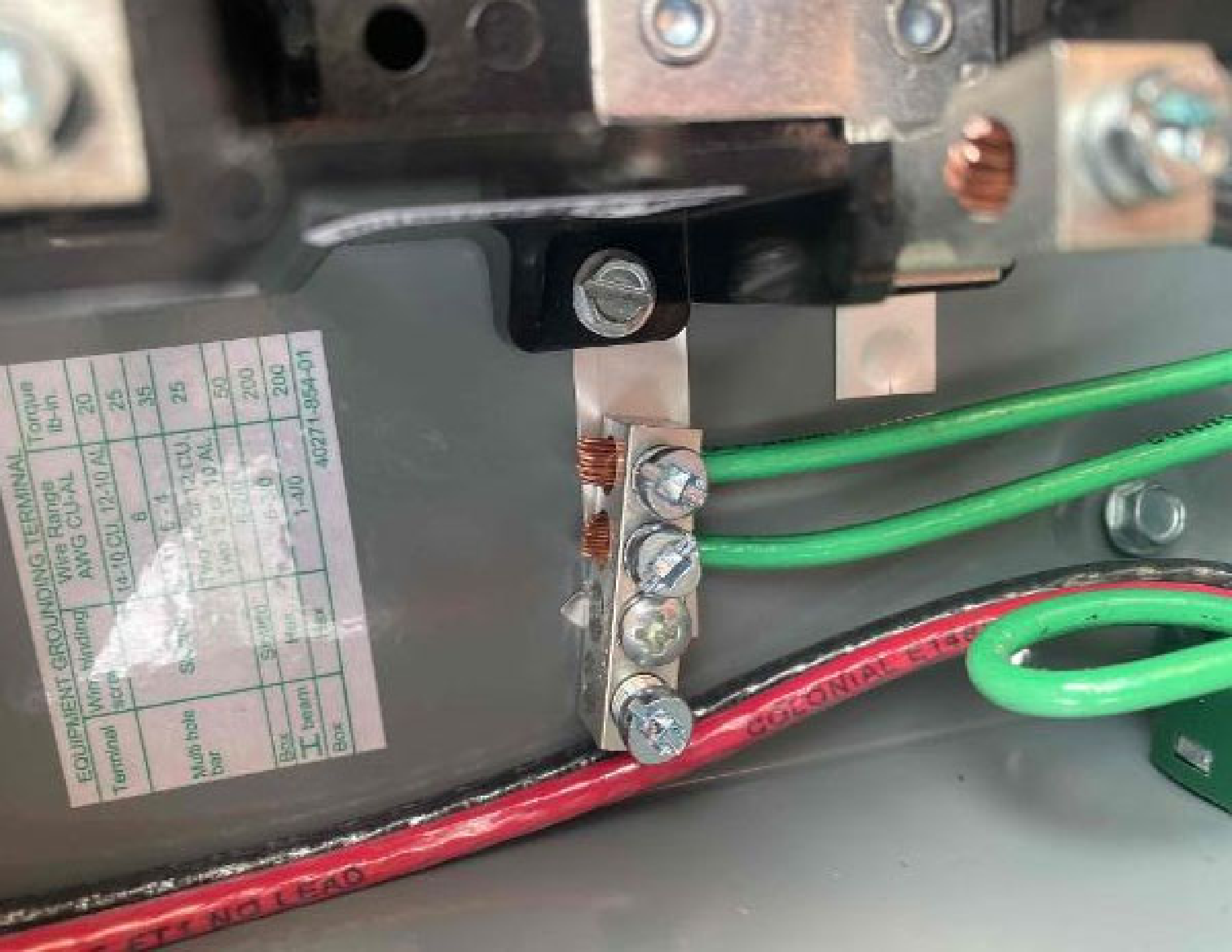
20A
120V
1000VA
C.B.
LISTED
C.B.

20A
120V
1000VA
C.B.
LISTED
C.B.

20A
120V
1000VA
C.B.
LISTED
C.B.

EQUIPMENT GROUNDING TERMINAL			
Terminal	Wire Winding	Wire Range AWG CU-AL	Torque lb-in
		14-10 CU 12-10 AL	20
		6	25
		E-4	35
		Two 14 or 12 CU Two 12 or 10 AL	25
		12-10	50
		12-10	200
		6-3-0	200
Box	Wiring	1-00	200
Terminal	Wiring	1-00	200
Box	Wiring	1-00	200

40271-854-01











702-00834 (0)

A2/A

GS

CONNECTION
RATED RAIN
CATION FR
INTO THE



TRAINING
SCOUTING
INDUSTRIAL
ELECTRONICS

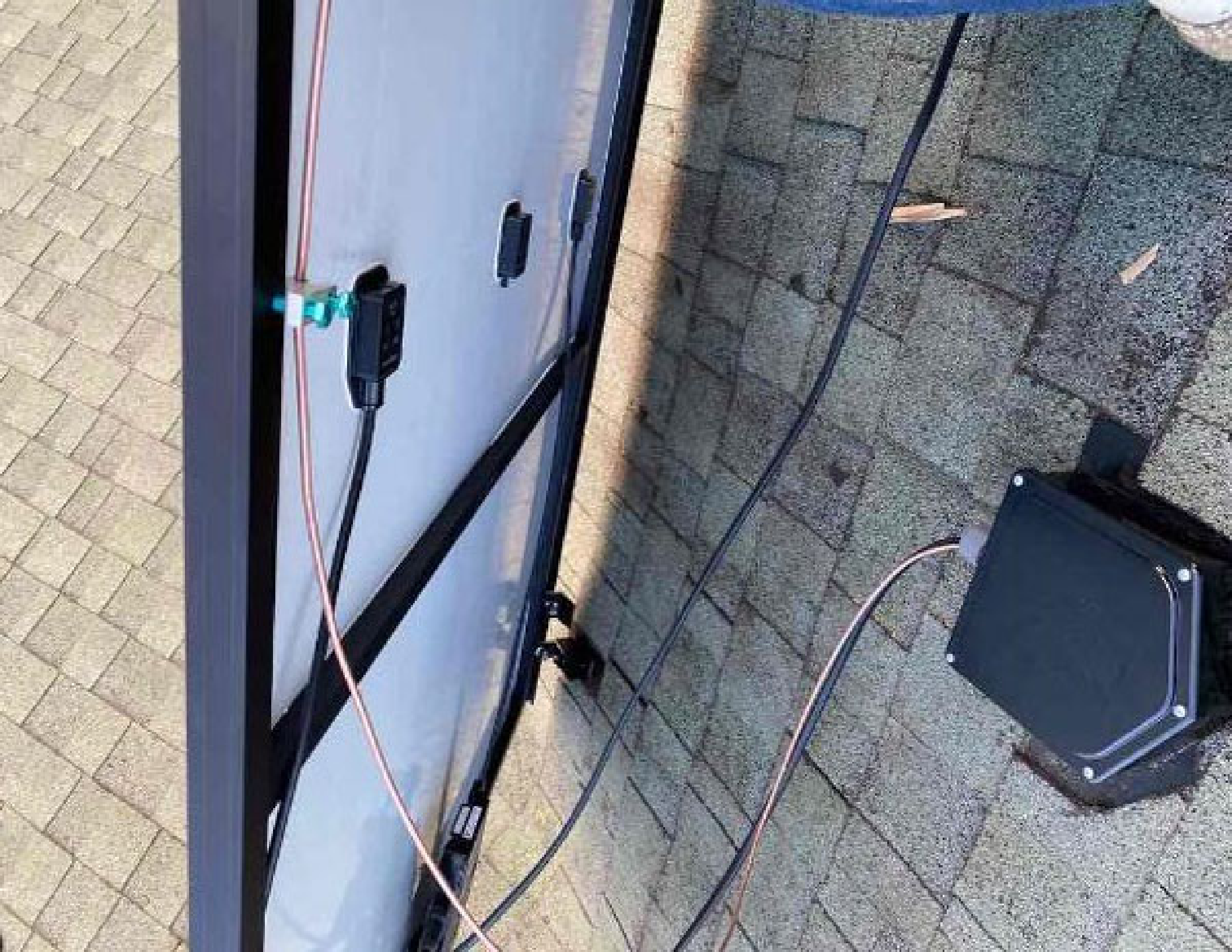


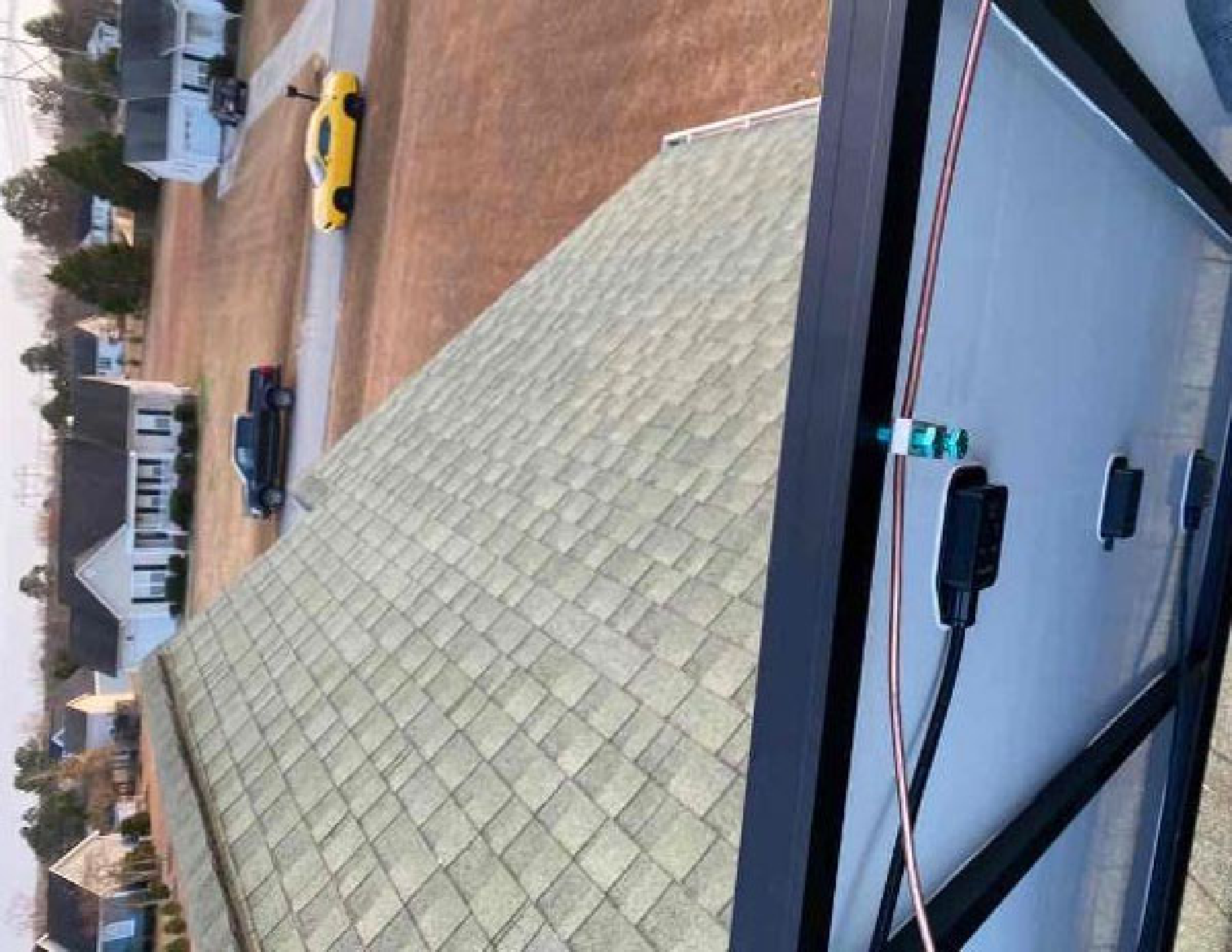
















Job Hazard Analysis

CUSTOMER NAME: **Randy Crockett**
 INSULATION DATE: **12/24**
Re view tower for sag

ADDRESS:

HAZARD CATEGORY	POTENTIAL HAZARDS	HAZARD CONTROLS
Ladder Safety	<ul style="list-style-type: none"> • Deployment • Defeat/ failure • Excursion 	Fiberglass ladders, feet + fiberglass good, 4 rungs above gutter, ladder leans off strappes
Fall Protection	<ul style="list-style-type: none"> • Fall from 4 or greater 	3 D-ring anchor per person. All roof crew in harnesses + roped in. Shack anchors
Electrical Safety	<ul style="list-style-type: none"> • Electrocuttion • ARC flash 	Breaker/switches open/off, insulated gloves, hard hats in PZ, grounding entry points
Heat & Related Issues	<ul style="list-style-type: none"> • High Heat - 85° to 90° • Extreme Heat - 100° or higher 	Bottled waters + hand spigots, gutter
Public Protection	<ul style="list-style-type: none"> • Falling object • snag/Trip/fall 	ade, shade/AC breaks cones around vehicle, LAZ in drop + hazard zones, slip zones on road

1614 W main St
Priddy

SAFETY CONTACT: 911, B.I.M., + PRS FIELD HR

Additional Notes

	Crew Members	Signature
1	James	<i>[Signature]</i>
2	James	<i>[Signature]</i>
3		
4		
5		
6		

Harmon Debbins
 Crew Lead (print)

[Signature]
 Crew Lead (Signature)

 ENPHASE.

WARNING: DO NOT INSTALL
THIS DEVICE IN A LOCATION
WHERE IT WILL BE EXPOSED TO
WATER OR MOISTURE.

CAUTION: DO NOT INSTALL
ADDITIONAL LOADS IN THIS PANEL.

WARNING
ELECTRICAL SHOCK HAZARD
TERMINALS ON THE TOP AND
LEFT SIDES ARE ENERGIZED
AFTER CABLE INSTALLATION.

WARNING
THIS DEVICE MUST BE INSTALLED
BY A LICENSED ELECTRICIAN.
TO THE EXTENT OF ALL APPLICABLE
NEC CODES, THIS DEVICE MUST BE
INSTALLED IN ACCORDANCE WITH
THE REQUIREMENTS OF SECTION 705.12.

WARNING
DO NOT ATTEMPT TO REPAIR OR
MODIFY THIS DEVICE. CONTACT
ENPHASE SUPPORT FOR ASSISTANCE.
SEE THE USER MANUAL FOR
CONTACT INFORMATION.



CAUTION: SOLAR CIRCUIT

PHASE.

CAUTION: SOLAR PANEL

2

1	2
3	4

CAUTION

1	2
3	4

CAUTION

1	2
3	4

CAUTION
PERMANENTLY ATTACHED

1	2
3	4

1	2
3	4

TERMINALS AND DISCONNECT
MAXIMUM OVERCURRENT
SERIAL OF DATE AND VOLTAGE

**RAPID SHUTDOWN SWITCH
FOR SOLAR PV SYSTEM**

**GENERAL DUTY
SAFETY SWITCH**
INTERRUPTOR DE
SERVICIO GENERAL
15 A
240 VOLT

A DANGER PELIGRO
WARNING: THE MAIN DISCONNECT IS NOT TO BE USED FOR THE PROTECTION OF PERSONNEL FROM ELECTRICAL SHOCK.



WARNING
ELECTRICAL SHOCK HAZARD
TERMINALS ON THE LINE AND
LOAD SIDES MAY BE ENERGIZED
IN THE OPEN POSITION

WARNING
POWER TO THIS BUILDING IS ALSO
SUPPLIED FROM MAIN DISTRIBUTION
UTILITY DISCONNECT LOCATED
METER MAIN

WARNING
ELECTRICAL SHOCK HAZARD
TERMINALS ON THE LINE AND
LOAD SIDES MAY BE ENERGIZED
IN THE OPEN POSITION

21

23

25

27

SOLAR

29



⚠ WARNING

POWER SOURCE OUTPUT CONNECTION.
DO NOT RELOCATE THIS OVERCURRENT DEVICE.

20

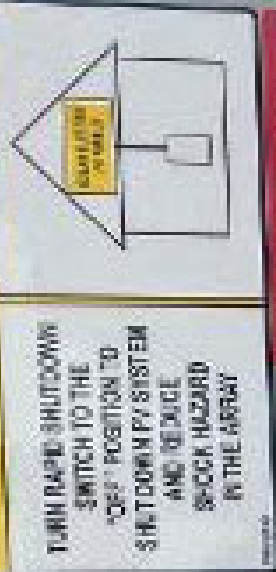
20

20

20

**SOLAR PV SYSTEM EQUIPPED
WITH RAPID SHUTDOWN**

TURN RAPID SHUTDOWN
SWITCH TO THE
"OFF" POSITION TO
SHUTDOWN PV SYSTEM
AND REDUCE
SHOCK HAZARD
IN THE ARRAY



SYSTEM VOLTAGE
MAXIMUM DC-AC CURRENT

USE LISTED DEREGULATED OR
UL728-CLASSIFIED SWITCHES
AS SPECIFIED IN THE
INSTALLATION MANUAL

WARNING
DUAL POWER SUPPLY

SOURCES: UTILITY GRID
AND PV SOLAR
ELECTRIC SYSTEM

WARNING
ELECTRIC SHOCK HAZARD
TERMINALS ON THE LINE AND
LOAD SIDES MAY BE ENERGIZED
IN THE OFF POSITION

WARNING
RATED LINE AND LOAD CURRENTS
APPLY TO THE RATED VOLTAGE
RANGES. EXCEEDING THESE
RANGES MAY BE DANGEROUS TO
PERSONNEL AND EQUIPMENT.

WARNING
TERMINALS ON THE LINE AND
LOAD SIDES MAY BE ENERGIZED
IN THE OFF POSITION





REC

REC Alpha Pure Series
 RE C400AA Pure
 Serial Number: FIB-40090194906

Model: REC C400AA
 www.rec.com

Power Output (Pinout)

Watt Class Sorting

Power Production Tolerances

Rated Voltage (Vin)

Rated Current (I_{rated})

Open Circuit Voltage (V_{oc}) (+/- 3%)

Short Circuit Current (I_{sc}) (+/- 3%)

Maximum System Voltage (V_{sys})

Maximum Series Fuse (I_{DC1}) (IEC)

Maximum Load

Maximum Test Load

Weight (kg) 10.5 (23.1 lb)

Dimensions (mm) 230 x 150 x 40

400 W
 D + B W
 +/- 3%
 42.1 V
 5.51 A
 48.2 V
 10.26 A
 1000 V
 25 A
 +/- 0.88 / -0.2566 per
 +/- 0.000 / 0.000 Per



Approved by
 the European Union
 for use in
 the EU
 CE Marking



100% DYE
 100% Efficiency



Manufacturer: 05-09-2023



Warning: electrical hazard. The module program is controlled with exposure to light.

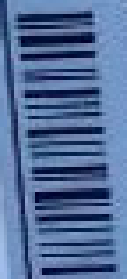
Warning: electrical hazard. The module program is controlled with exposure to light.

CAUTION: DO NOT DISCONNECT UNDER LOAD.

Attention: Ne pas déconnecter sous tension.

Warning: electrical hazard. The module program is controlled with exposure to light.

Attention: NE PAS DÉCONNECTER SANS TENSION.





REC

REC Alpha Pure Series
REC400AA Pure
Serial Number: F0B-1009096288

Phone: +86 6420 8222
www.recgroup.com

Power Output (Pmax)

400 W

Watt Class Sorting

0 ~ 5 W

Power Production Tolerance

± 3 %

Rated Voltage (Wrmp)

42.1 V

Rated Current (Irmp)

9.51 A

Open Circuit Voltage (Voc) (+/- 3%)

48.8 V

Short Circuit Current (Isc) (+/- 3%)

10.25 A

Maximum System Voltage (Vsys)

1800 V

Maximum Series Fuse (DC1 (UL))

25 A

Maximum Series Fuse (DC1 (IEC))

25 A

Design Load

± 400W / 2000VA

Maximum Test Load

± 700W / -4000VA

DC output at 1000V and 20A: 1.5mV and 1.5mV



Compliance with UL 1741
Certified by ETL
Listed for use in the United States
UL File # E-1741-17



1000V
1000V



Manufacturer: 09.08.2021



Warning: Electrical Hazard - Use correct procedure in safety when response to light.
CAUTION: DO NOT DISCONNECT UNDER LOAD

Attention: Risque de choc électrique - Se référer aux procédures de sécurité recommandées.
ATTENTION: NE PAS DECONNECTER SOUS TENSION

For full compliance, see our website: www.recgroup.com.
Model: REC400AA Pure, 170.
20 Power 1000V and 20A: 1.5mV and 1.5mV



