

**GENERAL DUTY  
SAFETY SWITCH  
INTERRUPTOR DE  
SEGURIDAD DE  
SERVICIO GENERAL  
100 A  
240 Vac/V-**

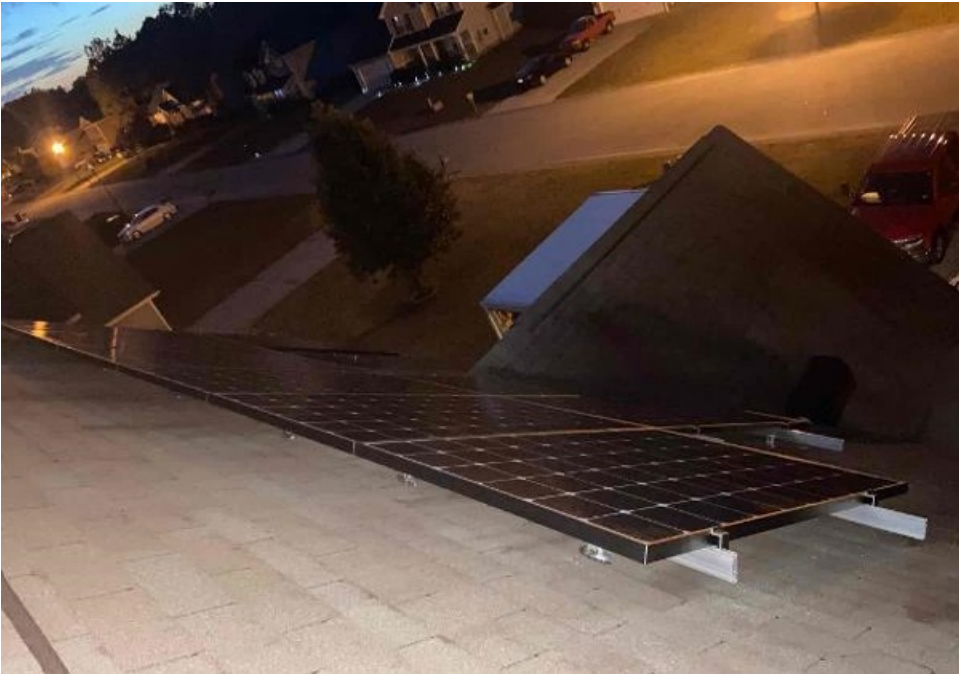
**ANGER / PELIGRO**

**ELECTRIC SHOCK, EXPLOSION, OR ARC FLASH  
RISQUE DE DESCARGA ELÉCTRICA, EXPLOSIÓN O  
DESTELLO POR ARQUEO**

- Utilice equipo de protección personal apropiado y siga las prácticas de seguridad eléctrica establecidas por su Compañía (consulte la norma NFPA 70E).
- Solamente el personal eléctrico calificado.







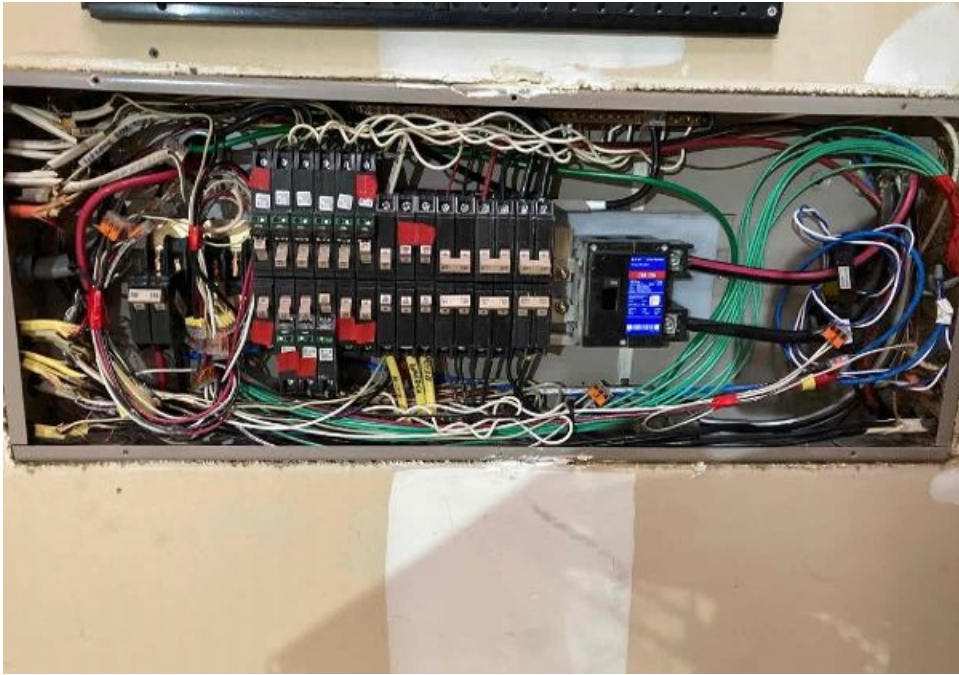














COMBINER BOX  
X-IQ-AM1-240-3-ES

SMITHS  
E341166

**Electrical ratings**

Voltage 240VAC, 60Hz  
DG Breakers 80A MAX (combined)  
DG Inputs 64A MAX (combined)  
Output 65A MAX, 90A MAX feeder OCPD  
Temperature 46°C MAX ambient  
FOR DG BREAKERS USE ONLY EATON BR SERIES

S/N:

202142003189

P/N:

883-00820 15

Dedicated solar and DG Combiner Box - do not add loads 10 AMP  
10 AMP OR 15 AMP ENVOY BREAKER NOT USED FOR BACKFEED

Connection	Wire sizes	Torque
DG Breaker	14-10 AWG 8 AWG 6-4 AWG	2.2 Nm (20 lb-in) 2.8 Nm (25 lb-in) 3.0 Nm (27 lb-in)
60A Circuit Breaker only	4-1/0 AWG	5.0 Nm (45 lb-in)
Neutral and ground	14-1/0 AWG 6-14 AWG	5.0 Nm (45 lb-in) 2.2 Nm (20 lb-in)
Large screw	10-4 AWG	5.0 Nm (45 lb-in)
Small screw	3-2/0 AWG	5.6 Nm (50 lb-in)
Main lug		

Copper conductors only, rated min. 75°C.  
Follow NFPA 70 (NEC), or CSA C22.1 part 1, and all local codes.  
For DG Breakers larger than 20A, use wire insulated for 90°C based on 75°C ampacities.













