





WIRE &





500 FEET

50000
DUCH



Wires connected to terminal block:
- Red wire with red and yellow wire nut
- Red wire with red and yellow wire nut
- Green wire with red and yellow wire nut

SOUTHWEST 331666 ET GMD PU WIRE 10 AWG 15.26 mm² CU 2889

343320 SAN PEET









WARNING: PHOTOVOLTAIC
POWER SOURCE

SOLADECK

WARNING
AVERTISSEMENT

Eastman Kodak Company
Eastman Kodak Company
Eastman Kodak Company



202521455550101534

ENGINEERED, DESIGNED AND QUALITY TESTED BY Q CELLS IN GERMANY

Q.PEAK DUO BLK ML-G10.a+ 400

Assembled in USA

PERFORMANCE AT STANDARD TEST CONDITIONS*			
Nominal Power* (P _{mp}) [W]	P _{mp}	[W]	400
Short circuit current*	I _{sc}	[A]	11.14
Open circuit voltage*	V _{oc}	[V]	45.30
Current at maximum power	I _{mp}	[A]	10.77
Voltage at maximum power	V _{mp}	[V]	37.13
Maximum system voltage	V _{sys}	[V]	1000 (IEC) 1000 (UL)
Weight	M	[kg/lbs]	22.0 / 48.5

*Measurement tolerances: P_{mp} ±3%, I_{sc}, V_{oc} ±1% at STC: 1000W/m², 25±2°C, AM 1.5 according to IEC 60904-3. Data given are rated (nominal) values.
IEC 61215:2016, IEC 61730:2016.

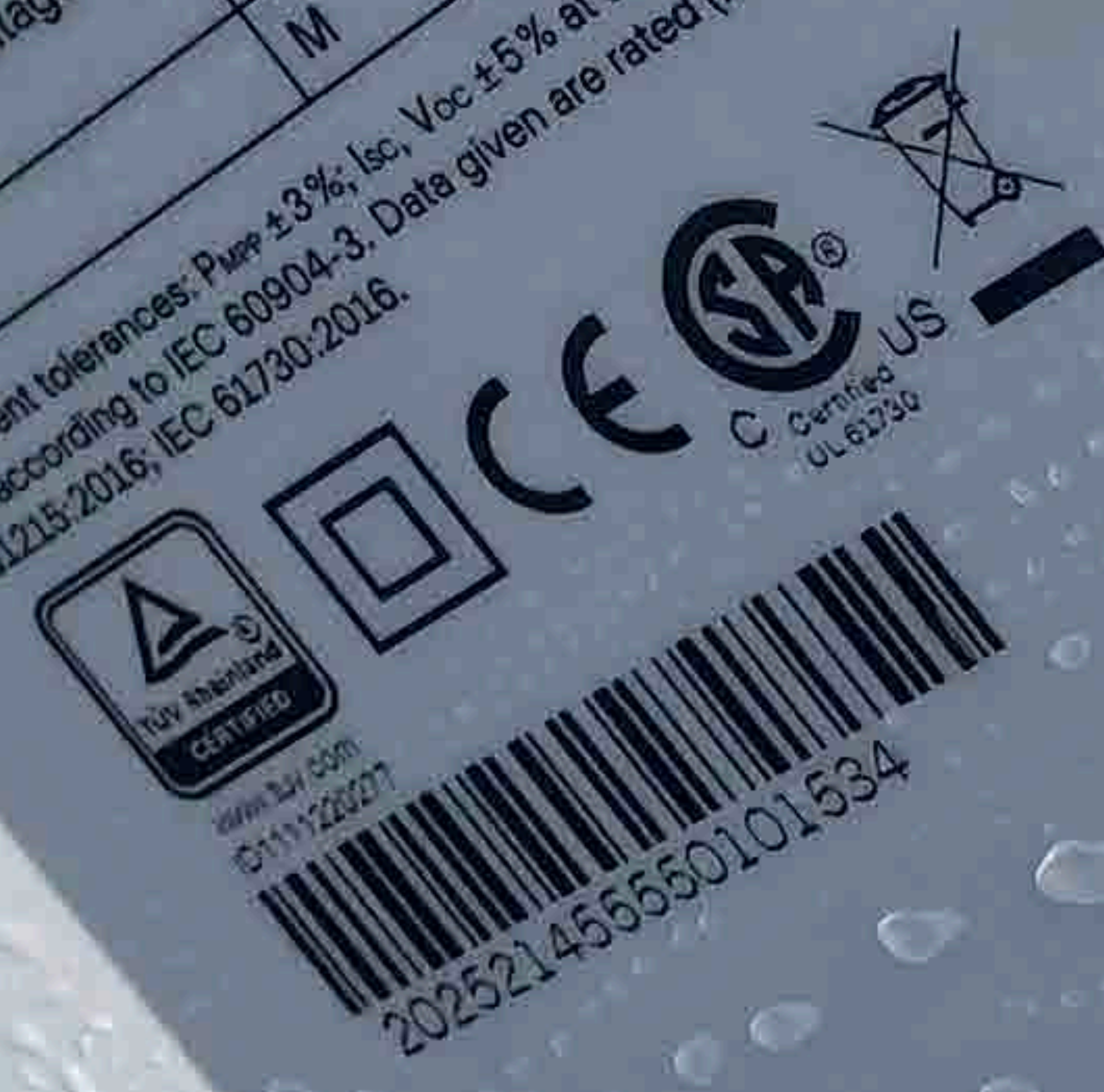


DANGER!
Risk of electric shock!
DO NOT connect or disconnect plug contacts while system is under load current. Refer to the Installation and Operation Manual before installing, operating or servicing this unit.

DANGER!
Risque de choc électrique!
NE PAS connecter ou déconnecter les systèmes en charge. Consultez le manuel d'installation, et d'utilisation et entretien du produit.

Fire Rating: Class C / Type 2
Design load: 55 lbs/ft²
Fuse Rating: 20 A
For field connections, use minimum No.12 AWG copper wires insulated for a minimum of 90°C

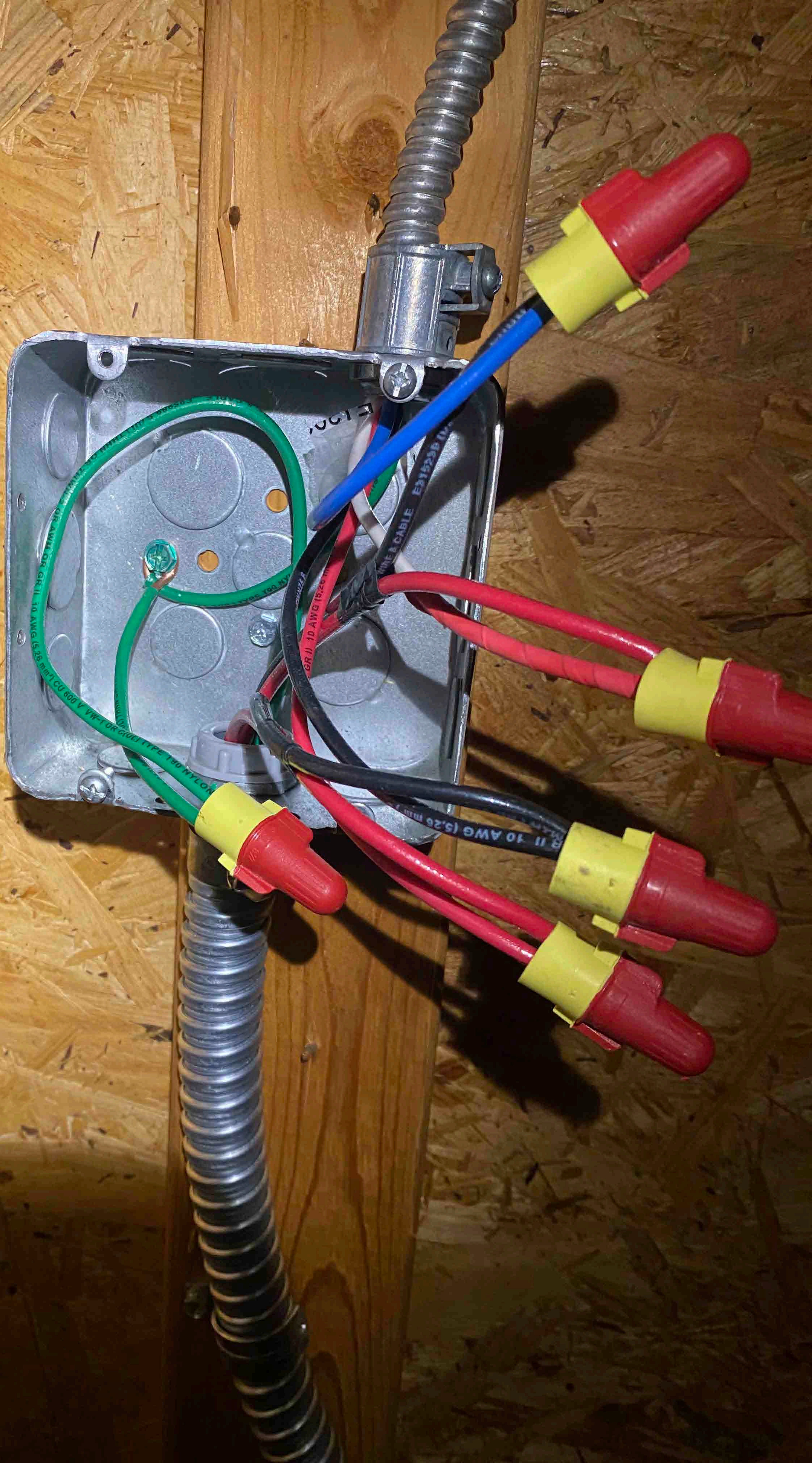
U.S. Patent No. 9,893,215 (solar cells)
EMAIL service@q-cells.com
WEB www.q-cells.com



Hanwha Q CELLS USA Inc.,
330 Nexus Drive, Dalton, GA 30721, USA
Certification holder: Hanwha Q CELLS GmbH









**WARNING: PHOTOVOLTAIC
POWER SOURCE**

OSB
1 1/2" x 4' x 8' (12' x 4' x 8')
1/2" x 4' x 8' (12' x 4' x 8')
1/2" x 4' x 8' (12' x 4' x 8')

WARNING
PO: P
ER



edge

HD wave

