

Installation photos for

Ruth Frame

1296 Young Drive

Angier, NC 27501

Harnett County

Permit # ERES2111-0001

# SOLARIA<sup>®</sup>

Solaria PowerXT- 360R-P0-L

Peak Power	(P <sub>max</sub> )	360 W
Voltage at P <sub>max</sub>	(V <sub>mp</sub> )	39.5 V
Current at P <sub>max</sub>	(I <sub>mp</sub> )	9.13 A
Open Circuit Voltage	(V <sub>oc</sub> )	47.7 V
Short Circuit Current	(I <sub>sc</sub> )	8.96 A
Maximum Series Fuse		15 A

All ratings at maximum cell irradiance: 1000 W/m<sup>2</sup> AM 1.5 spectrum, 25°C.  
Peak power based on 1000 W/m<sup>2</sup> AM 1.5 spectrum irradiance at 25°C.



PTL  
USA

CERTIFIED



**- WARNING -**  
**ELECTRICAL HAZARD**

Read and comply with Product Installation Manual

See the Rating Type 1

See installation manual for  
additional information on  
rating and performance. For  
more information, please  
contact your distributor.



101822112013038

Manufacturer: SunPower Corporation

Model: 360R-P0-L  
www.solaria.com/usa



















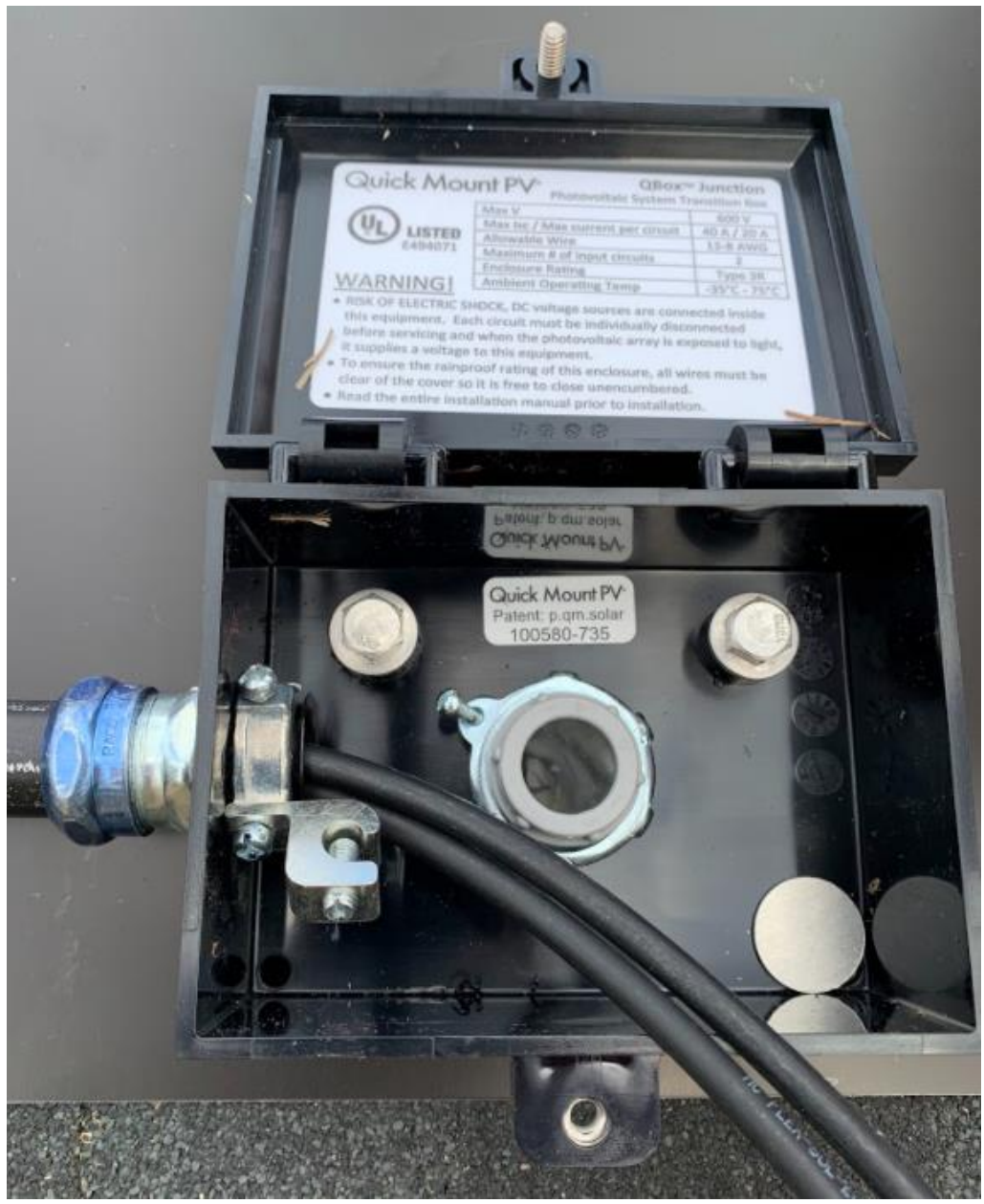












**Quick Mount PV** QBox™ Junction  
Photovoltaic System Transition Box

Max V	600 V
Max In / Max current per circuit	40 A / 20 A
Allowable Wire	18-8 AWG
Maximum # of input circuits	2
Enclosure Rating	Type 3R
Ambient Operating Temp	-35°C - 75°C

**WARNING!**

- RISK OF ELECTRIC SHOCK, DC voltage sources are connected inside this equipment. Each circuit must be individually disconnected before servicing and when the photovoltaic array is exposed to light, it supplies a voltage to this equipment.
- To ensure the rainproof rating of this enclosure, all wires must be clear of the cover so it is free to close unencumbered.
- Read the entire installation manual prior to installation.

Quick Mount PV  
Patent: p.qm.solar  
100580-735



**Quick Mount PV** QBox™ Junction  
Photovoltaic System Transition Box



Max V	600 V
Max Isc / Max current per circuit	40 A / 70 A
Allowable Wire	12-8 AWG
Maximum # of input circuits	2
Enclosure Rating	Type 3R
Ambient Operating Temp	-35°C - 75°C

**WARNING!**

- RISK OF ELECTRIC SHOCK, DC voltage sources are connected inside this equipment. Each circuit must be individually disconnected before servicing and when the photovoltaic array is exposed to light, it supplies a voltage to this equipment.
- To ensure the rainproof rating of this enclosure, all wires must be clear of the cover so it is free to close unobstructed.
- Read the entire installation manual prior to installation.

Quick Mount PV  
Patent: p.qm.solar  
• 100580-735



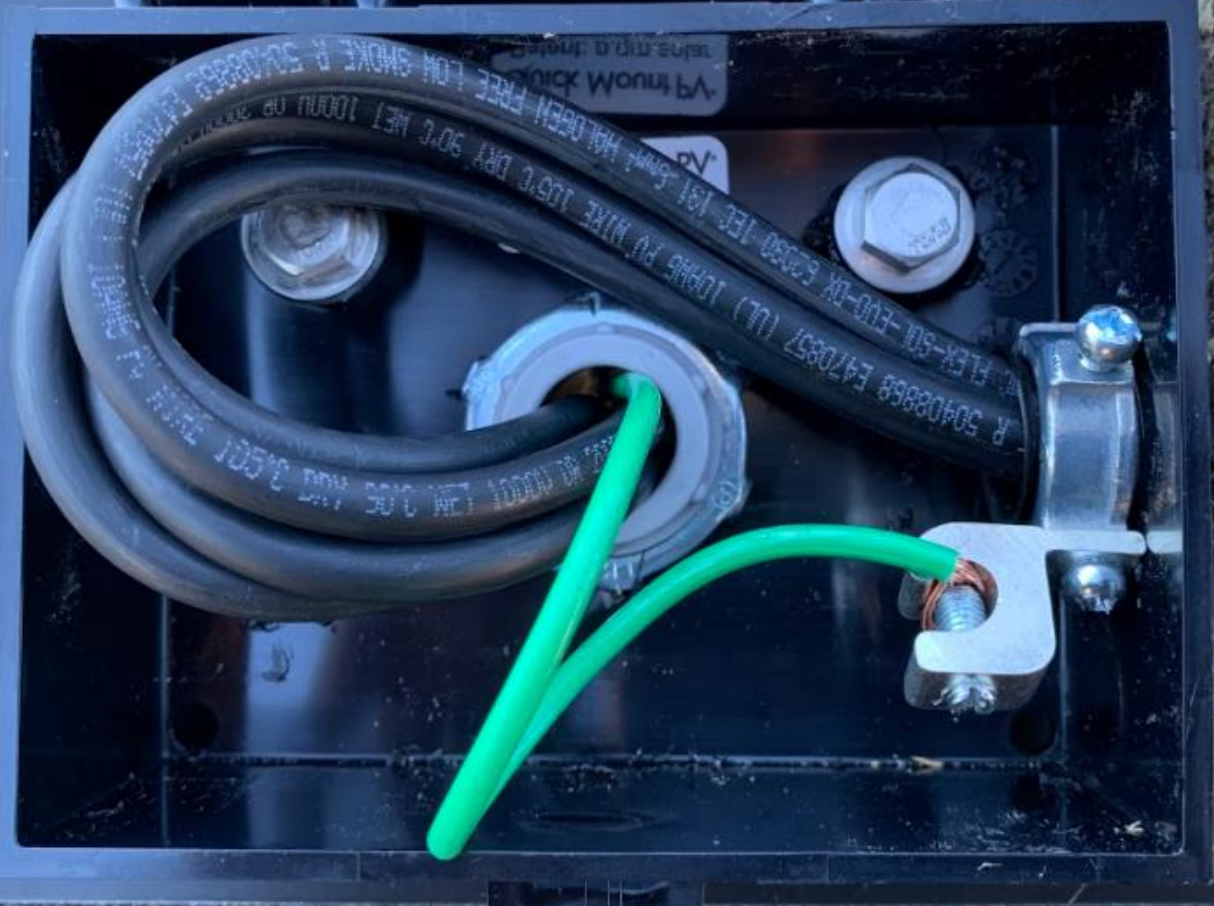






it supplies a voltage to this equipment.

- To ensure the rainproof rating of this enclosure, all wires must be clear of the cover so it is free to close unencumbered.
- Read the entire installation manual prior to installation.

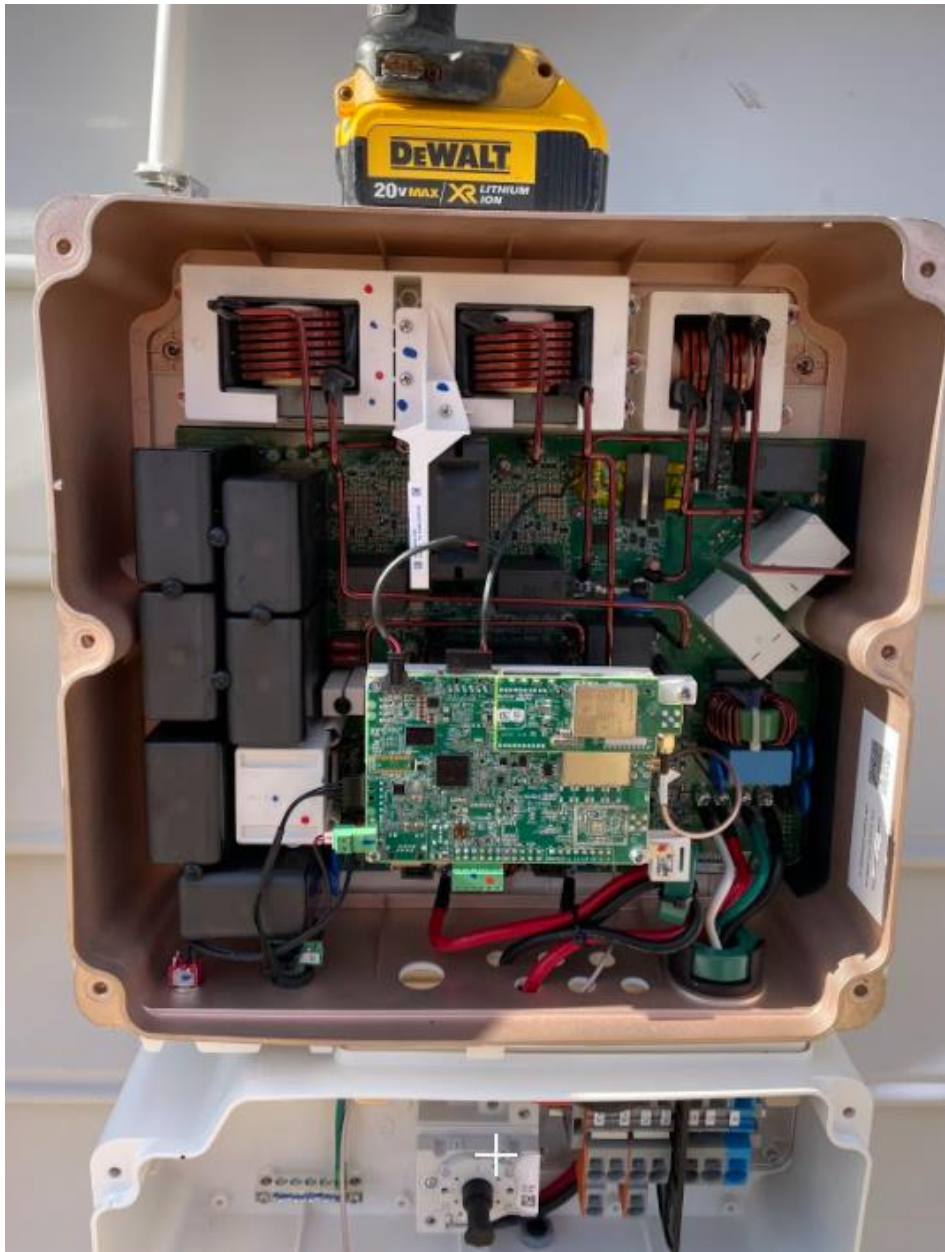




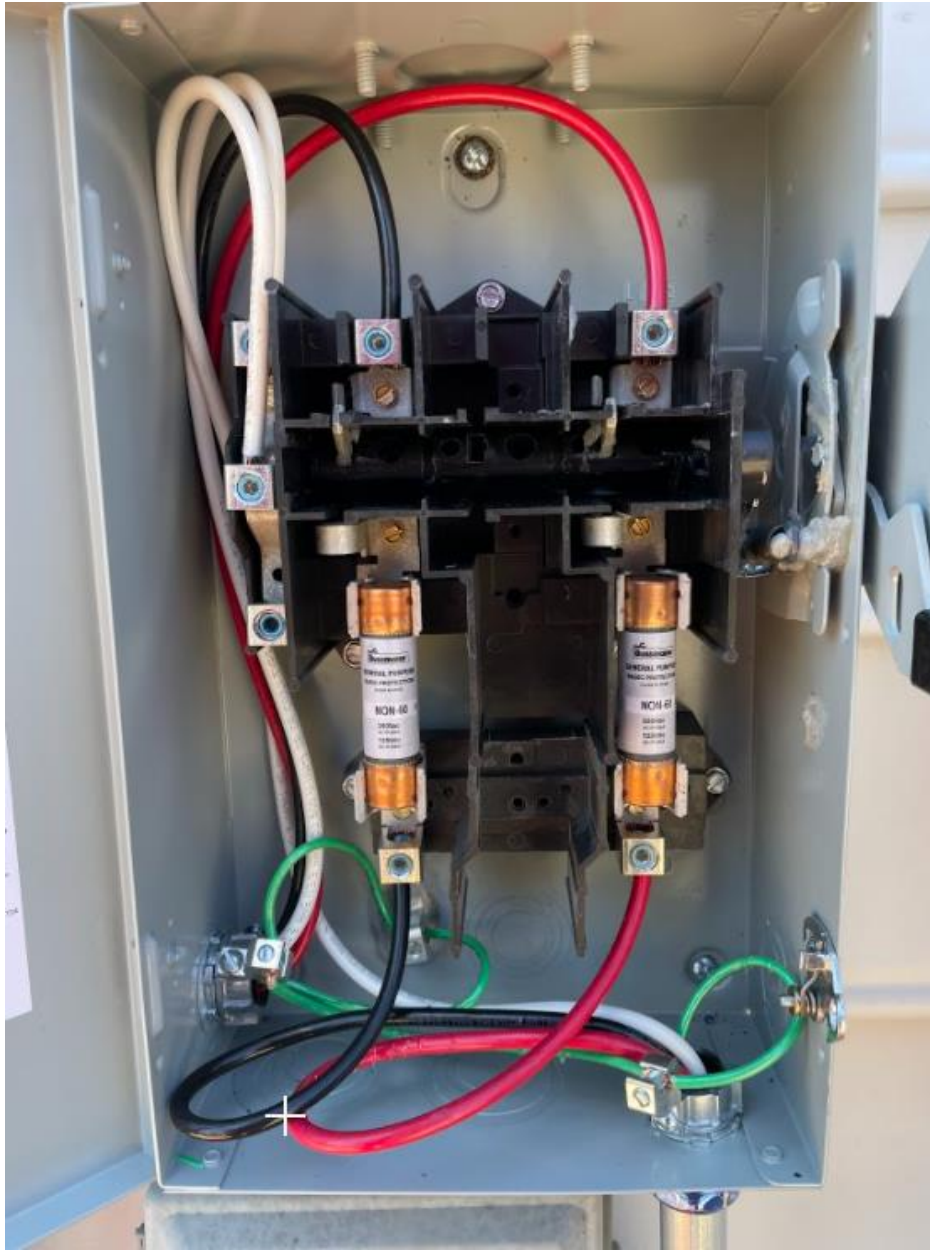






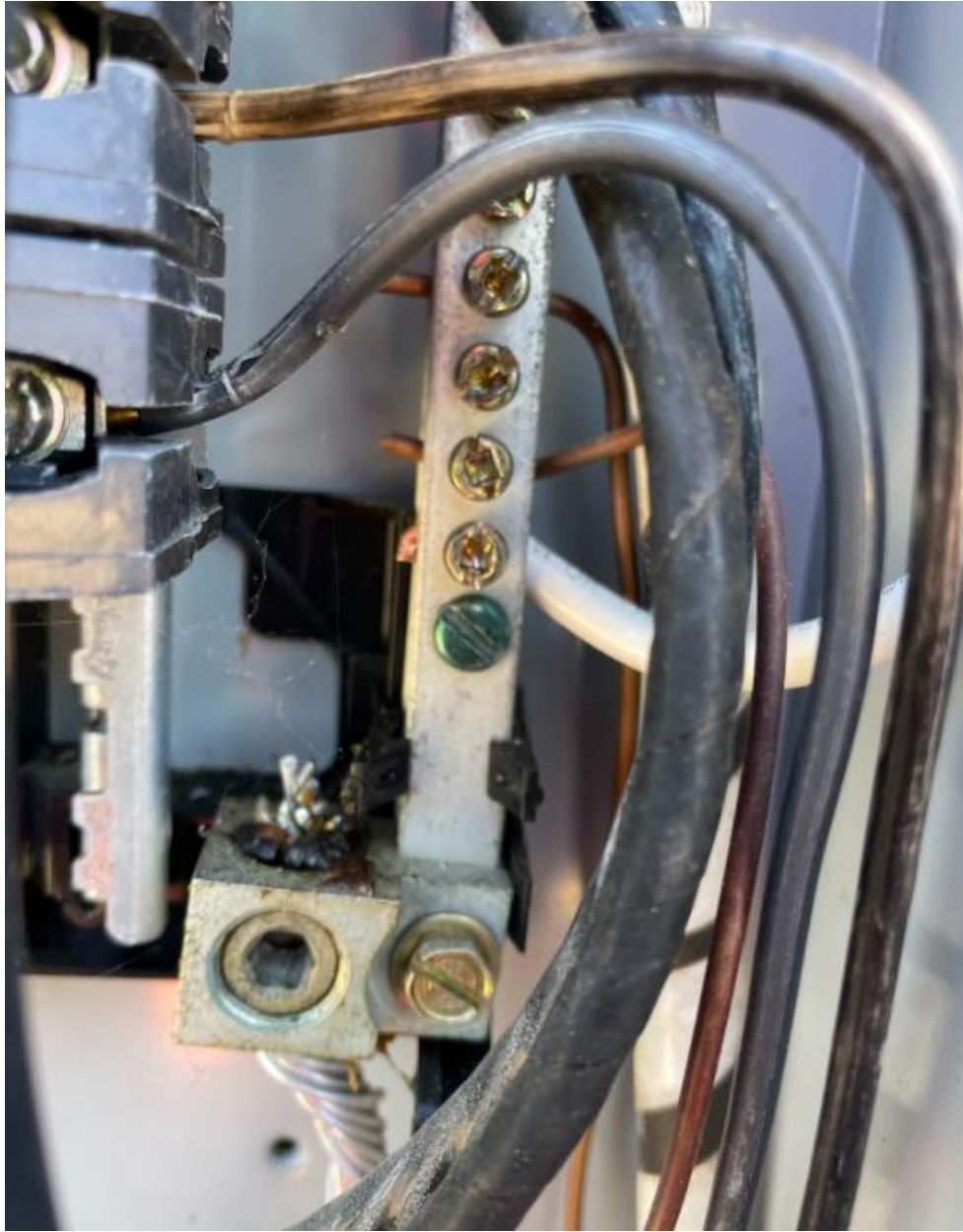












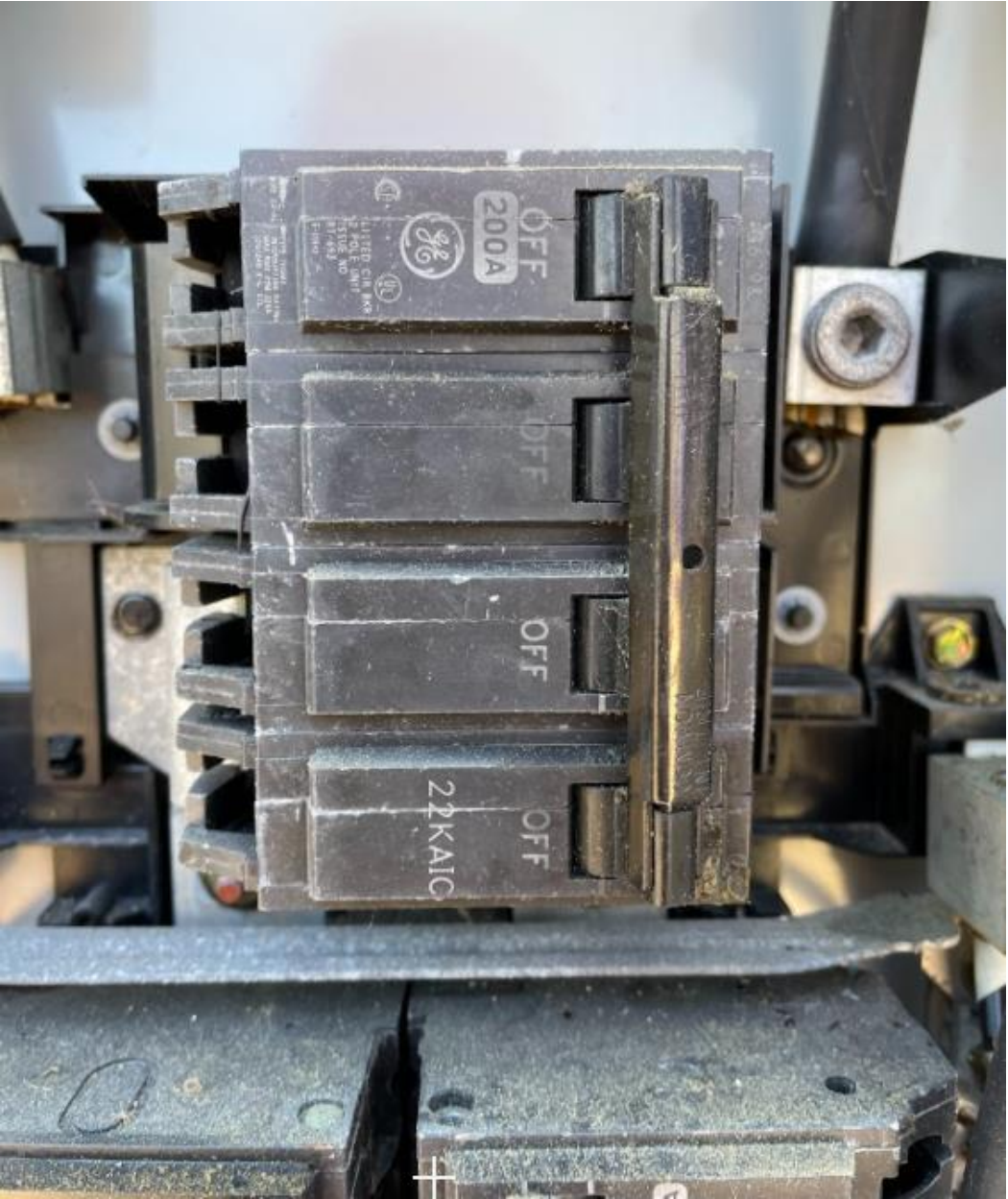


































**WARNING**  
INVERTER OUTPUT CONNECTION  
DO NOT RELOCATE  
THIS OVERCURRENT  
DEVICE

PHOTOVOLTAIC SYSTEM  
EQUIPPED WITH  
RAPID SHUTDOWN

**WARNING**  
THIS EQUIPMENT FED BY MULTIPLE  
SOURCES. TOTAL RATING OF ALL  
OVERCURRENT DEVICES, EXCLUDING  
MAIN SUPPLY OVERCURRENT  
DEVICE, SHALL NOT EXCEED  
CAPACITY OF BUSBAR.

PHOTOVOLTAIC SYSTEM  
DC DISCONNECT

OPERATING VOLTAGE	400	VDC
OPERATING CURRENT	13.5	AMPS
MAX SYSTEM VOLTAGE	480	VDC
SHORT CIRCUIT CURRENT	30.5	AMPS
CHARGE CONTROLLER MAX		AMPS

PHOTOVOLTAIC SYSTEM  
DC DISCONNECT

OPERATING VOLTAGE	0	VDC
OPERATING CURRENT		AMPS
MAX SYSTEM VOLTAGE	0	VDC
SHORT CIRCUIT CURRENT	0	AMPS
CHARGE CONTROLLER MAX		AMPS

LABEL 6 -  
PLACED ADJACENT  
TO INVERTER IF  
TO BUSBAR

LABEL 7  
SIGN LOCATED  
EQUIPMENT

LABEL 8  
(ONLY IF 3 OR  
BUSBAR) SIGN  
CONTAINING  
705.12(D)(2)(3)

LABEL 9 - IN  
AT PV DISCO  
APPLIES, NE

LABEL 10 - IN  
AT PV DISCO  
APPLIES, NE

SOURCES: UTILITY GRID  
AND PV POWER SOURCE  
ELECTRIC SYSTEM

**WARNING**  
ELECTRIC SHOCK HAZARD  
DO NOT TOUCH TERMINALS  
ON BOTH THE LINE AND  
LOAD SIDES MAY BE ENERGIZED  
IN THE OPEN POSITION

PHOTOVOLTAIC SYSTEM  
DC DISCONNECT

RATED MPP CURRENT **13.5** AMPS  
RATED MPP VOLTAGE **400** VOLTS  
MPP=MAX POWER POINT  
MAX SYSTEM VOLTAGE **480** VDC  
MAX CIRCUIT CURRENT **30.5** AMPS

PHOTOVOLTAIC SYSTEM  
EQUIPPED WITH  
RAPID SHUTDOWN





PHOTOVOLTAIC SYSTEM  
AC DISCONNECT

**WARNING**

DUAL POWER SUPPLY

SOURCES: UTILITY GRID AND PV SOLAR ELECTRIC SYSTEM

ELECTRIC SHOCK HAZARD

DO NOT TOUCH TERMINALS  
TERMINALS ON BOTH THE LINE AND LOAD SIDES  
MAY BE ENERGIZED IN THE OPEN POSITION.

OPERATING VOLTAGE **240** VOLTS

OPERATING CURRENT **47.5** AMPS

TELEPHONE  
NETWORK  
EQUIPMENT









