





SOLAR  
SOLAR

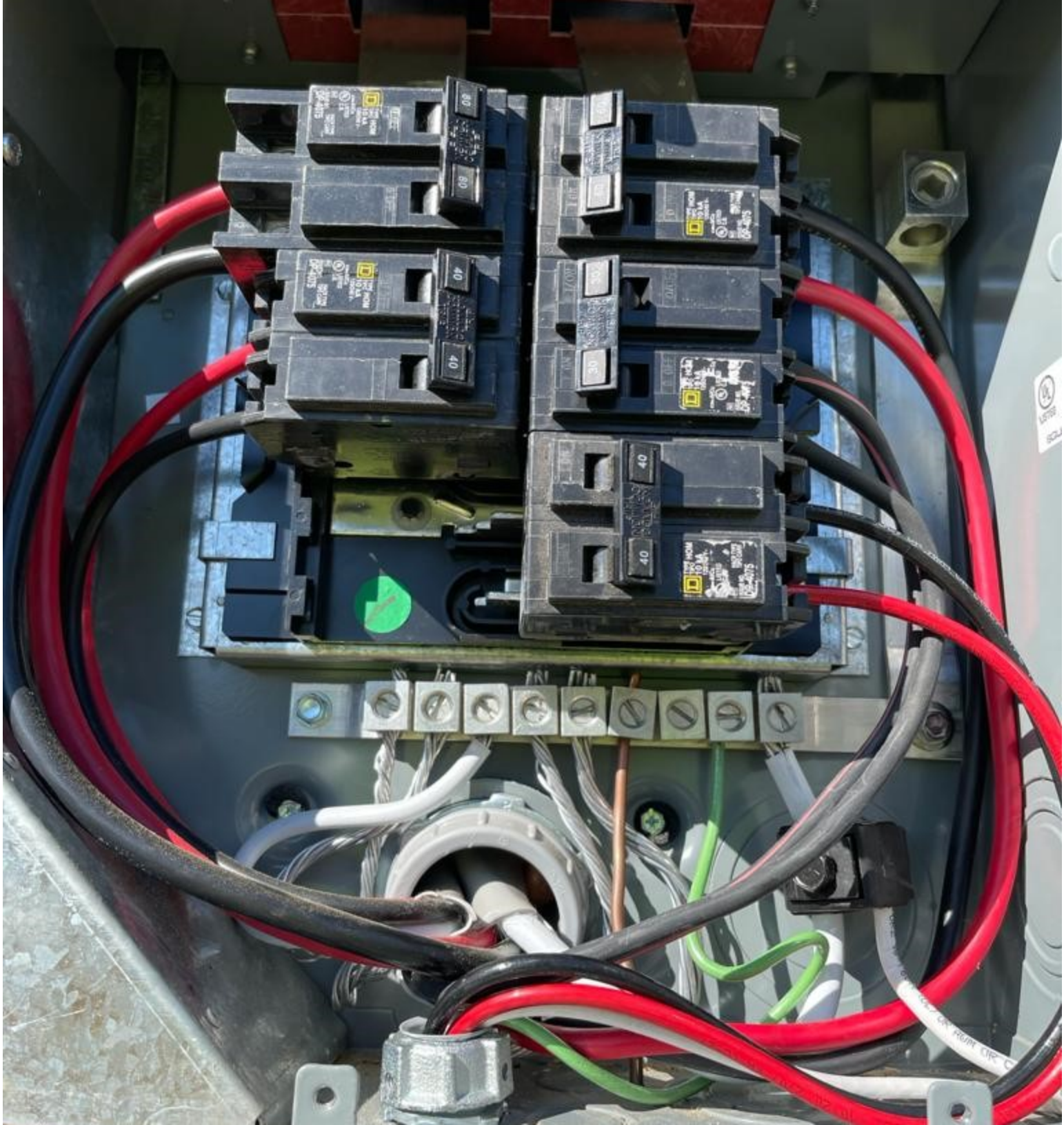
If this equipment is used as a service equipment, the applicable label(s) must be affixed to the equipment. If the label(s) is stamped in "main", label must cover this wording.  
Si este equipo se utiliza como equipo de servicio, esta(s) etiqueta(s) debe(n) estar(s) colocada(s) en el marco, la etiqueta de "main" debe cubrir esta(s) palabra(s).  
40268-579-03

**WARNING**  
POWER SOURCE OUTPUT CONNECTION. DO NOT RELOCATE THIS OVERCURRENT DEVICE.

**HAZARD OF ELECTRIC SHOCK, EXPLOSION, OR ARC FLASH** / **PELIGRO DE DESCARGA ELÉCTRICA, EXPLOSIÓN O DESTELLO POR ARQUEO**

- Apply appropriate personal protective equipment (PPE) and follow safe electrical work practices. See NFPA 70E.
- Utilice equipo de protección personal (EPP) apropiado y siga las prácticas de seguridad eléctrica establecidas por su Compañía (consulte la norma NFPA 70E).
- This equipment must only be installed and serviced by qualified electrical personnel.
- Solamente el personal eléctrico especializado deberá instalar y prestar servicio de mantenimiento a este equipo.
- Turn off all power supplying this equipment.
- Desenergice el equipo antes de realizar









**DIRECTORY / DIRECTORIO**

1	Solar	2	Tomare
3	Range	4	Tomare
5	Range	6	Alf
7	Range	8	Alf
9		10	Solar
11		12	Solar
13		14	
15		16	
17		18	
19		20	

**SQUARE D COMPANY**  
1000 W. MICHIGAN AVE. CHICAGO, ILL. 60606-3000  
407 01



WARNING  
DO NOT OPEN THIS PANEL  
UNLESS YOU ARE A QUALIFIED  
ELECTRICIAN

SOLAR  
SOLAR

**WARNING**  
POWER SOURCE OUTPUT  
CONNECTION DO NOT  
RELOCATE THIS  
OVERCURRENT DEVICE.

**⚠ DANGER / PELIGRO**  
**HAZARD OF ELECTRIC SHOCK, EXPLOSION, OR ARC FLASH**  
**PELIGRO DE DESCARGA ELÉCTRICA, EXPLOSIÓN O DESTELLO POR ARQUEO**

1. Read and understand all instructions.  
2. This equipment must be installed, used, and serviced by qualified personnel only.  
3. Turn off all power including this equipment before working on it.  
4. Always use a properly rated voltage limiting device for voltage protection.  
5. Release all stored energy before working on the equipment.  
Failure to follow these instructions will result in death or serious injury.

1. Antes de comenzar cualquier trabajo, lea y entienda todas las instrucciones.  
2. Este equipo debe ser instalado, usado y mantenido únicamente por personal calificado.  
3. Desconecte toda la energía, incluida esta, antes de trabajar en ella.  
4. Siempre utilice un dispositivo limitador de voltaje apropiado para su protección.  
5. Libere toda la energía almacenada antes de trabajar en el equipo.  
El no seguir estas instrucciones puede resultar en la muerte o lesiones graves.



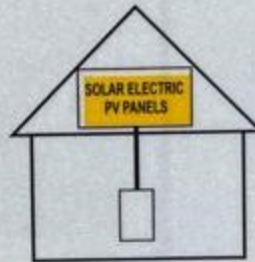


GENERAL DUTY  
SAFETY SWITCH  
INTERRUPTOR DE  
SEGURIDAD DE  
SERVICIO GENERAL  
60 A  
240 Vac / V-

ON

**SOLAR PV SYSTEM EQUIPPED  
WITH RAPID SHUTDOWN**

TURN RAPID SHUTDOWN  
SWITCH TO THE  
"OFF" POSITION TO  
SHUT DOWN PV SYSTEM  
AND REDUCE  
SHOCK HAZARD  
IN THE ARRAY



**PHOTOVOLTAIC AC DISCONNECT**

MAXIMUM AC OPERATING CURRENT:	34
NOMINAL OPERATING AC VOLTAGE:	240

OFF





 ENPHASE.

 **WARNING**  
POWER SOURCE OUTPUT  
CONNECTOR DO NOT  
RELOCATE THIS  
OVERCURRENT DEVICE.





⚠ WARNING DUAL POWER SOURCE  
SECOND SOURCE IS PHOTOVOLTAIC SYSTEM



⚠ WARNING DUAL POWER SOURCE  
SECOND SOURCE IS PHOTOVOLTAIC SYSTEM



SOL  
TURN P  
OF  
SHUT  
P  
SK  
II





DIRECTORY / DIRECTORIO

1	2
3	4
5	6
7	8
9	10
11	12
13	14
15	16
17	18
19	20

Solar  
Solar

SOLVEX COMPANY

SOLAR  
SOLAR

WARNING  
DO NOT TOUCH  
INTERNAL PARTS  
WHEN ENERGIZED

**WARNING**  
POWER SOURCE OUTPUT  
CONNECTION DO NOT  
RELOCATE THIS  
OVERCURRENT DEVICE

**⚠ DANGER / PELIGRO**  
HAZARD OF ELECTRIC SHOCK, EXPLOSION OR ARC FLASH  
PELIGRO DE DESCARGA ELÉCTRICA, EXPLOSIÓN O DE FUEGO POR ARCO  
1. Always wear proper personal protective equipment (PPE) for the task you are performing. See the manufacturer's instructions for more information.  
2. This equipment may contain capacitors that can store energy and discharge even when the power is turned off. Discharge all capacitors before working on the equipment.  
3. Turn off all power to the equipment before working on it.  
4. Do not touch live parts of the equipment.  
5. Do not touch the equipment when it is energized.  
6. Do not touch the equipment when it is energized.  
7. Do not touch the equipment when it is energized.  
8. Do not touch the equipment when it is energized.  
9. Do not touch the equipment when it is energized.  
10. Do not touch the equipment when it is energized.



DIRECTORY / DIRECTORIO

1 <u>Range</u>	2 <u>Fornace</u>
3 <u>Range</u>	4 <u>Fornace</u>
5 <u>Range</u>	6 <u>AXE</u>
7 <u>Range</u>	8 <u>AXE</u>
9 _____	10 <b>Solar</b>
11 _____	12 <b>Solar</b>
13 _____	14 _____
15 _____	_____
17 _____	18 _____
19 _____	20 _____

ROUPEL COMPANY

40-021-01



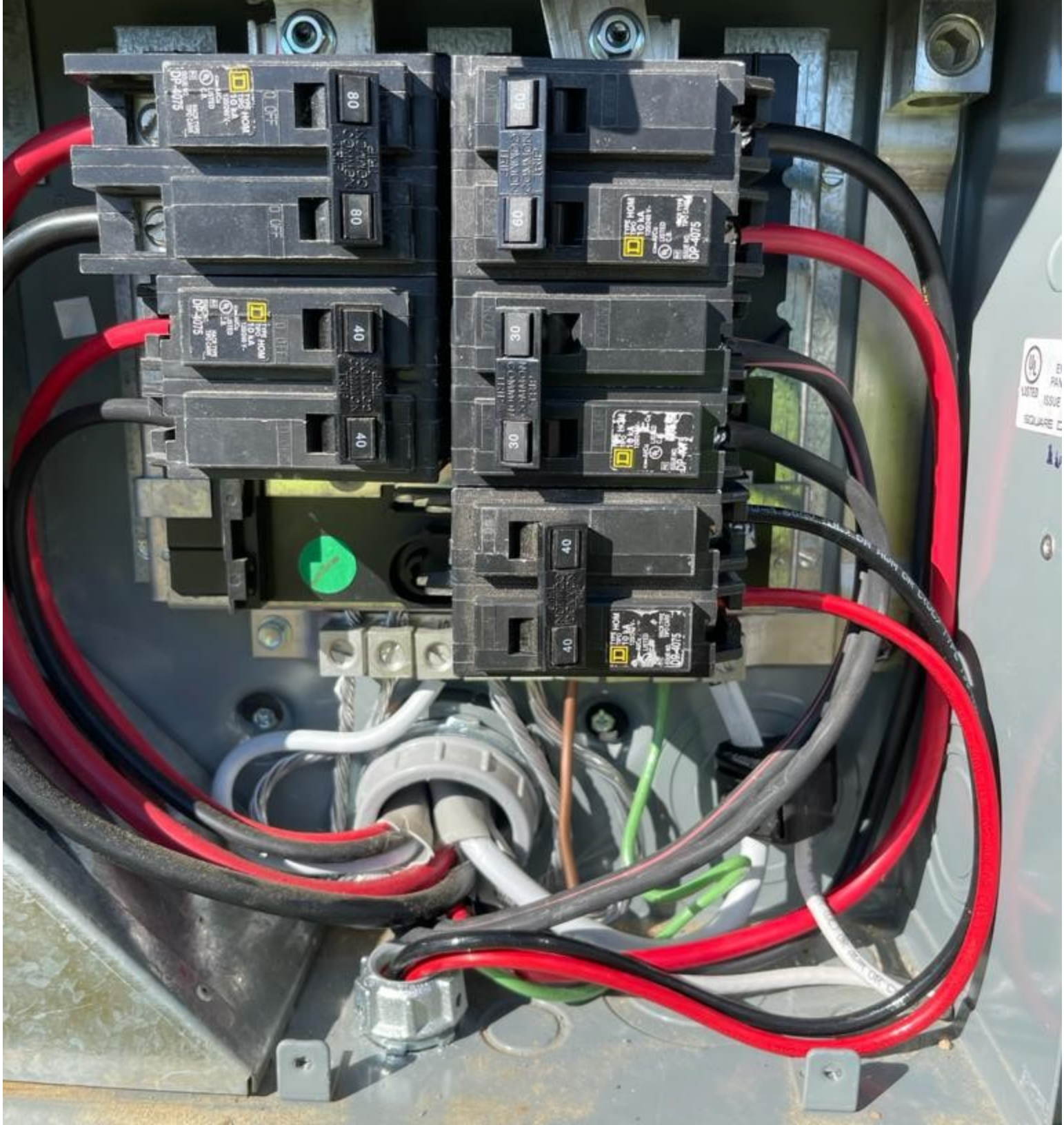












UL LISTED  
ELECTRICAL  
EQUIPMENT























**SOLADECK**  
www.soladeck.com

UL Listed  
E15007

■ EPW Series ■ EPFE Series ■ 0106-4100

Maximum Rating: 550V DC/100 AMP/ 400 VAC/10 AMP/5

<b>⚠ WARNING</b> READ THE INSTRUCTIONS BEFORE USING THIS EQUIPMENT. NEVER USE THIS EQUIPMENT UNLESS YOU ARE A QUALIFIED ELECTRICIAN OR A PERSON WHOSE TRAINING AND EXPERIENCE QUALIFY HIM OR HER TO DO SO. ALWAYS USE THE CORRECT WIRING METHODS. SEE THE USER MANUAL FOR MORE INFORMATION. SEE THE USER MANUAL FOR MORE INFORMATION.	<b>⚠ AVERTISSEMENT</b> LIREZ LES INSTRUCTIONS AVANT D'UTILISER CE MATÉRIEL ÉLECTRIQUE. NE JAMAIS UTILISER CE MATÉRIEL À MOINS D'ÊTRE UN ÉLECTRICIEN QUALIFIÉ OU UNE PERSONNE QUALIFIÉE EN MATIÈRE D'ÉLECTRICITÉ. TOUJOURS UTILISER LES MÉTHODES CORRECTES DE CÂBLAGE. VOYEZ LE MANUEL D'UTILISATEUR POUR PLUS D'INFORMATIONS. VOYEZ LE MANUEL D'UTILISATEUR POUR PLUS D'INFORMATIONS.
---	--











Photovoltaic Conversion/Inverters Complies to UL 1741, Certified to IEC 62109-2 VdC, 500 Series, Type III  
021 022 023 024 021 022 023 024  
0799 Series 0799 S-Series 0799-434D  
Maximum Ratings: 1000 VDC/180 AMPS, 480 VAC/60 AMPS

⚠ WARNING		⚠ AVERTISSEMENT	
	HIGH VOLTAGE, KEEP OUT! RISK OF ELECTRICAL SHOCK. ONLY TRAINED SERVICE PERSONNEL ALLOW ACCESS. NOTABLE FOR PROTECTIVE USE. APPROACH FOR USE WITH FIELD-INSTALLED CONNECTIONS ADD 18 IN. AS ALLOWED. A DISTANCE OF 30 IN. (8 FT.) OR GREATER SHOULD BE MAINTAINED FROM THE INVERTER UNLESS OTHERWISE SPECIFIED BY THE ELECTRICAL CODE, PART 1. MINIMUM WORK CLEARANCE FOR LINE CIRCUIT SEE TABLE 1.		HAUTE TENSION, GARDER À L'ÉLOI RISQUE DE CHOC ÉLECTRIQUE. SEUL LE PERSONNEL DE MAINTIENNE QUALIFIÉ EST ACCÉSSIBLE POUR UN USAGE PROTECTEUR. APPROCHER POUR UTILISATION AVEC DES CONNEXIONS INSTALLÉES SUR PLACE DE TRAVAIL. CONSIDÉRER UN ÉCART ADDITIONNEL DE 30 IN. (8 FT.) SUPPLÉMENT À RECOMMANDÉ AU CIRCUIT DE HAUTE TENSION UNLESS OTHERWISE SPECIFIED BY THE ELECTRICAL CODE, PART 1. MINIMUM WORK CLEARANCE FOR LINE CIRCUIT SEE TABLE 1.



