



SERVICE
DISCONNECT



SO-AR

WARNING
POWER SOURCE OUTPUT
CONNECTION DO NOT
RELOCATE THE
OVERCURRENT DEVICE



 ENPHASE.

 **WARNING**
POWER SOURCE OUTPUT
CONNECTION. DO NOT
RELOCATE THIS
OVERCURRENT DEVICE.

⚠ WARNING DUAL POWER SOURCE
SECOND SOURCE IS PHOTOVOLTIC SYSTEM

GRIDSTREAM RF
SERIES 2000

05871

FORM 25 CL200 240V 3W 60Hz T&A 30 Kh 7.2
CENTRAL EMC
166 769 472
Lanoka + Gyr

⚠ WARNING DUAL POWER SOURCE
SECOND SOURCE IS PHOTOVOLTIC SYSTEM



GENERAL DUTY
SAFETY SWITCH
INTERRUPTOR DE
SERVICIO GENERAL
R/A
240 V~ 1P~

**SOLAR PV SYSTEM EQUIPMENT
WITH RAPID SHUTDOWN**

TURN RAPID SHUTDOWN
SWITCH TO THE
"OFF" POSITION TO
SHUT DOWN PV SYSTEM
AND REDUCE
SHOCK HAZARD
IN THE ARRAY



PHOTOVOLTIC AC DISCONNECT

MAXIMUM AC OPERATING CURRENT	31
NOMINAL OPERATING AC VOLTAGE	240





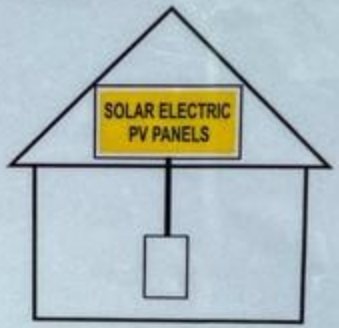


GENERAL DUTY
SAFETY SWITCH
INTERRUPTOR DE
SEGURIDAD DE
SERVICIO GENERAL
60 A
240 Vac / V-

ON

**SOLAR PV SYSTEM EQUIPPED
WITH RAPID SHUTDOWN**

TURN RAPID SHUTDOWN
SWITCH TO THE
"OFF" POSITION TO
SHUT DOWN PV SYSTEM
AND REDUCE
SHOCK HAZARD
IN THE ARRAY



PHOTOVOLTAIC AC DISCONNECT
MAXIMUM AC OPERATING CURRENT: 31
NOMINAL OPERATING AC VOLTAGE: 240

OFF









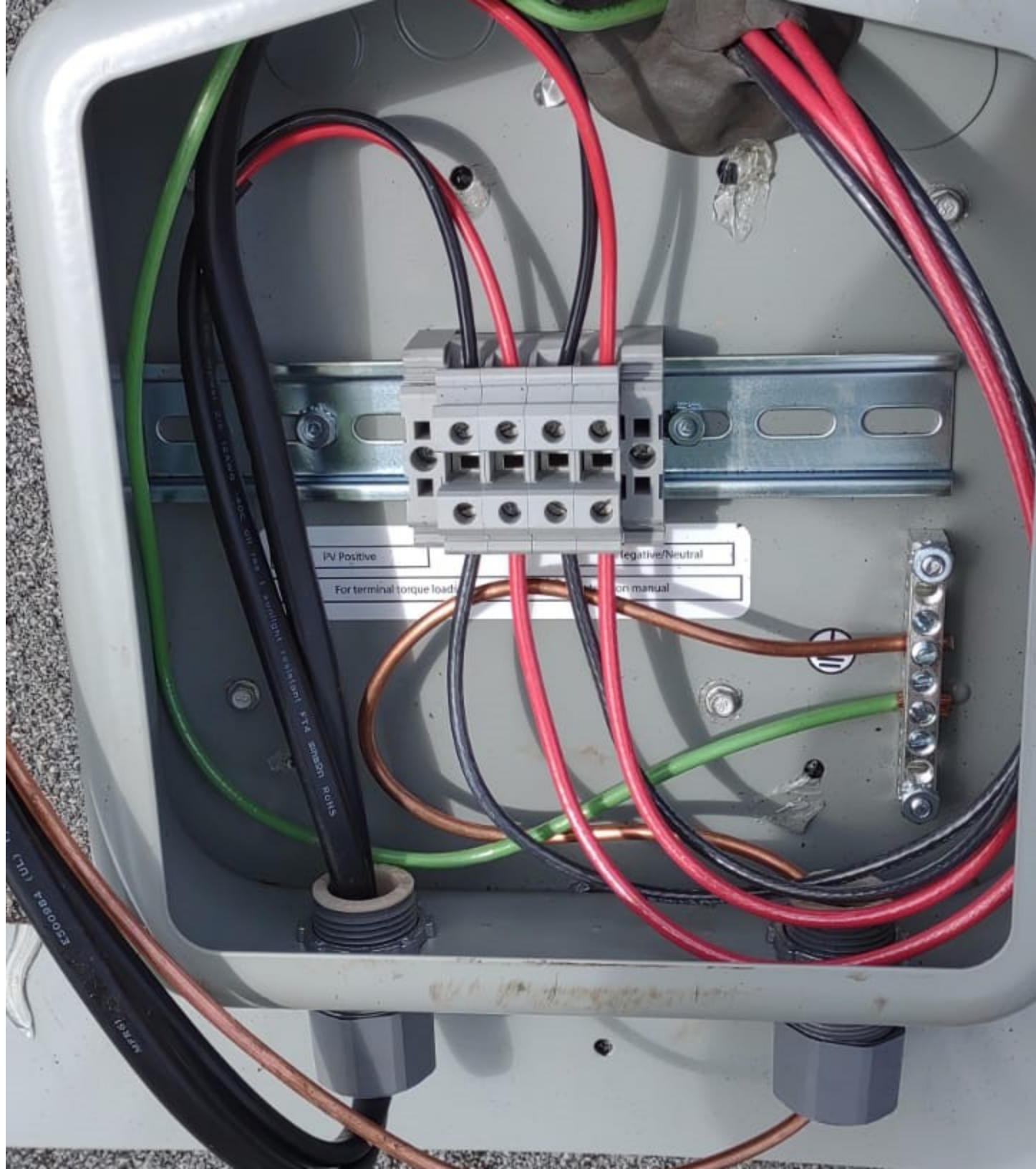










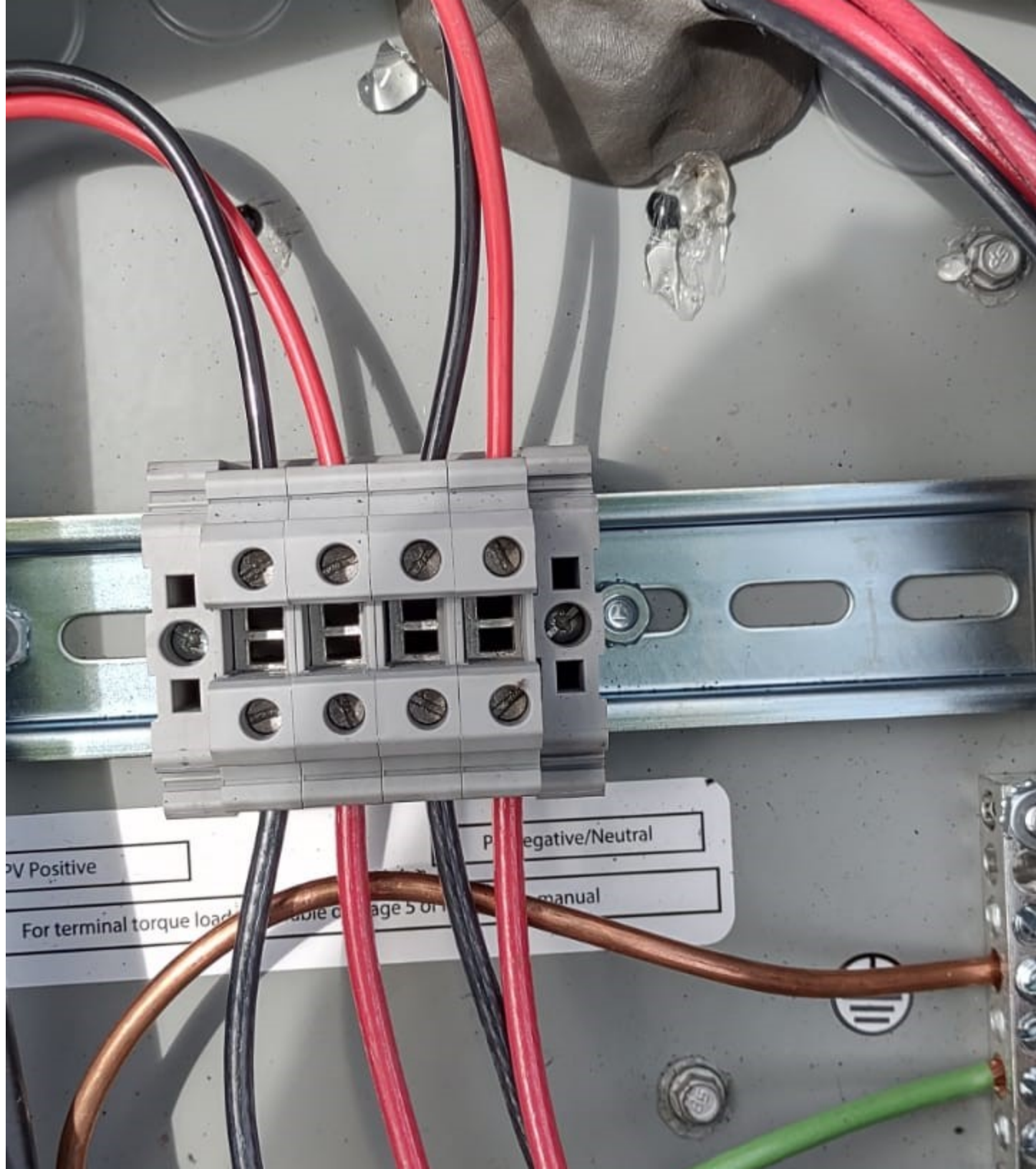


PV Positive

Negative/Neutral

For terminal torque load

on manual



PV Positive

Negative/Neutral

For terminal torque load... cable coverage 5 on... manual





SOLADECK
 www.soladeck.com
 Photovoltaic Combiner/Disconnect Combiner in UL 3141, Certified to CSA C22.2 No. 290, Nema Type 3R

01 02 03 04 21 22 23 24
 0799 Series 0799 E-Series 0766-41AD
 Maximum Ratings: 1000 VDC/180 AMPS; 480 VAC/60 AMPS

⚠ WARNING	⚠ AVERTISSEMENT
<p> HIGH VOLTAGE, KEEP OUT! RISK OF ELECTRICAL SHOCK. ONLY TRAINED SERVICE PERSONNEL ALLOW ACCESS. NOTABLE FOR PHOTOVOLTAIC USE. APPROVED FOR USE WITH FIELD-INSTALLED CONDUCTING BODIES FOR AN ALLOWABLE AMPACITY OF 30 AWG 60°C. AN EXTERNAL OUTPUT SHORT CIRCUITING THIS DEVICE SHALL BE PROVIDED WHEN REQUIRED BY THE CANADIAN ELECTRICAL CODE, PART 1. WARNING MORE THAN ONE LIVE CIRCUIT. SEE DIAGRAM. </p>	<p> HAUTE TENSION, GARDER LOIN! RISQUE DE CHOC ELECTRIQUE. SEUL LE PERSONNEL DE MAINTENANCE QUALIFIE EST ACCESSEMENT. POUR USAGE PHOTOVOLTAIQUE, APPROUVE POUR UTILISATION AVEC DES CONDUCTEURS INSTALLES SUR PLACE DE BRONCHES CORRESPONDANT A UN COURANT ADMISSE DE 30 AWG 60°C. DISPOSITIF DE SECTIONNEMENT EN CIRCUIT DE SORTIE EXTERNE OBLIGATOIRE SI EXIGE PAR LE CODE CANADIEN DE L'ELECTRICITE, PREMIERE PARTIE. AVERTISSEMENT PLUSIEURS CIRCUITS SONT TENSION. VOIR LE SCHEMA. </p>

ASTEC Energy ses
 Patent No. US 7,829,818 B1

