

Combiner Box X-IQ-AM1-240-3-ES

Electrical ratings

Voltage 240VAC, 60Hz
DG Breakers 80A MAX (combined)
DG Inputs 64A MAX (combined)
Output 65A MAX, 90A MAX feeder OCPD
Temperature 46°C MAX ambient
Use only Eaton BR series Breakers (60A max)

S/N:

202121047411

P/N:

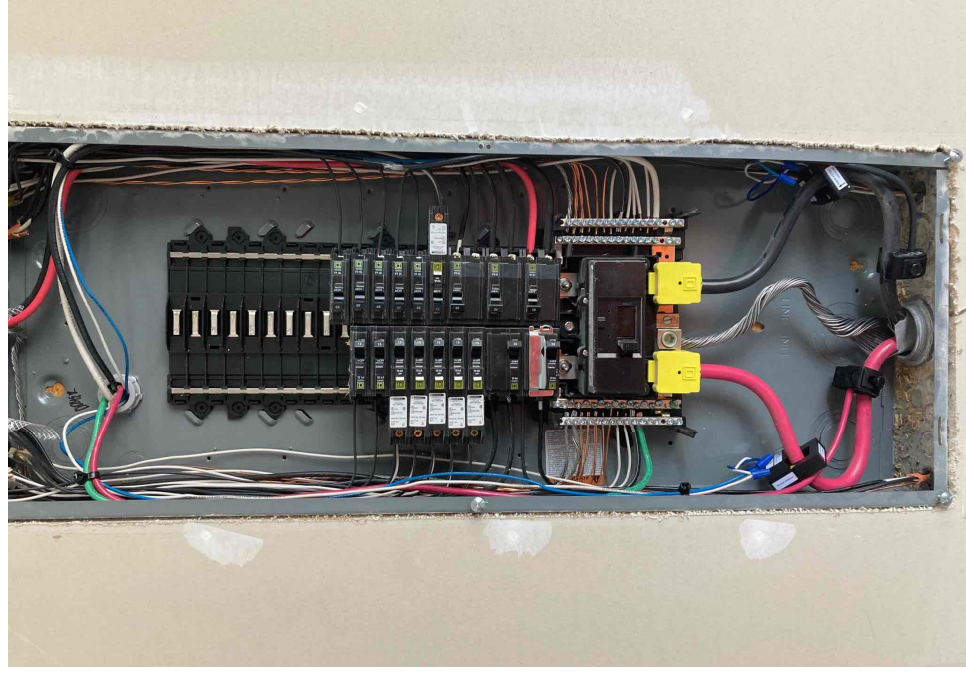
883-00820 11

**Dedicated solar and DG Combiner Box - do not add loads 10
Envoy Breaker not used for backfeed**

Connection	Wire sizes	Wire sizes
DG Breaker	14-10 AWG	2.2 Nm (20 lb ft)
	8 AWG	2.8 Nm (25 lb ft)
	6-4 AWG	3.0 Nm (27 lb ft)
60A Circuit Breaker only	4-1/0 AWG	5.0 Nm (45 lb ft)
Neutral and ground		
Large screw	14-1/0 AWG	5.0 Nm (45 lb ft)
Small screw	6-14 AWG	2.2 Nm (20 lb ft)
Main lug	10-4 AWG	5.0 Nm (45 lb ft)
	3-2/0 AWG	5.6 Nm (50 lb ft)

Copper conductors only, rated min. 75°C.
Follow NFPA 70 (NEC), or CSA C22.1 part 1, and all local codes.

For DG Breakers larger than 20A, use wire insulated for 90°C



... .. POWER SUPPLYING THE
EQUIPMENT BEFORE MAKING WORK.
Dispositif de service de compteurs
d'alimentation de travail en ligne

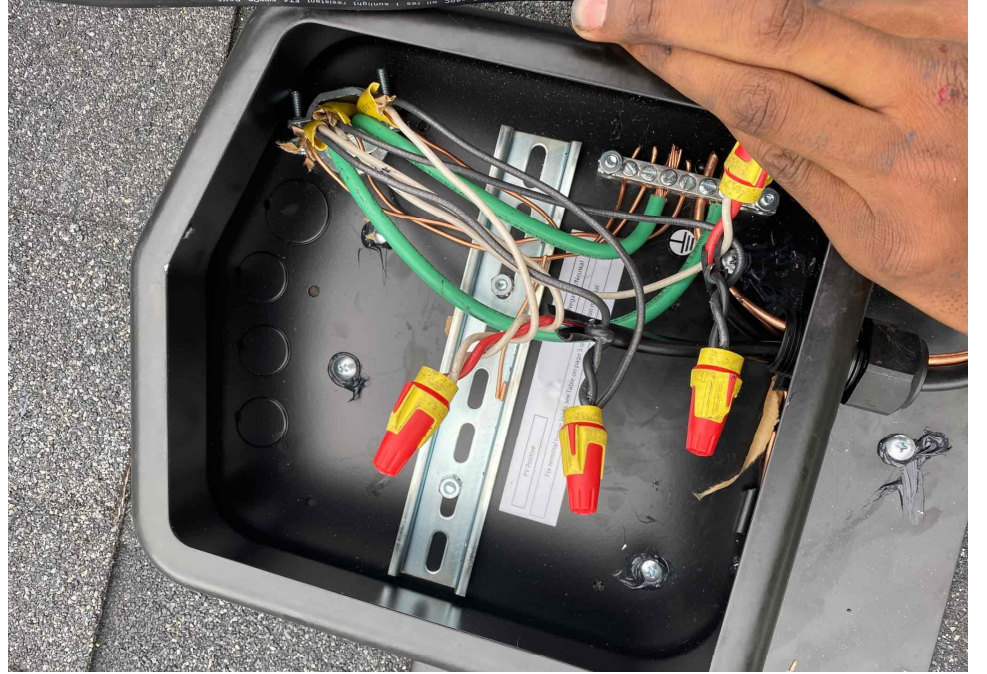


WARNING

THIS SERVICE METER IS ALSO SERVED BY A PHOTOVOLTAIC SYSTEM

596-02942









**CAUTION: DO NOT INSTALL
ADDITIONAL LOADS IN THIS PANEL**

59F-C3942

⚠ WARNING

ELECTRICAL SHOCK HAZARD

TERMINALS ON THE LINE AND
LOAD SIDES MAY BE ENERGIZED
IN THE OPEN POSITION

59F-C3942



⚠ WARNING

POWER SOURCE OUTLET CONNECTION.
DO NOT RELOCATE THIS OVERCURRENT DEVICE.

⚠ CAUTION

PHOTOVOLTAIC SYSTEM CIRCUIT IS BACKFEED



⚠ WARNING

DUAL POWER SUPPLY

SOURCES: UTILITY GRID
AND PV SOLAR
ELECTRIC SYSTEM

59F-C3942

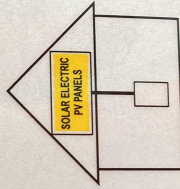
**PHOTOVOLTAIC SYSTEM
EQUIPPED WITH
RAPID SHUTDOWN**

59F-C3942

**SOLAR PV SYSTEM EQUIPPED
WITH RAPID SHUTDOWN**

TURN RAPID SHUTDOWN
SWITCH TO THE
"OFF" POSITION TO
SHUT DOWN PV SYSTEM
AND REDUCE
SHOCK HAZARD
IN THE ARRAY

59F-C3942



EATON®

General Duty Safety Switch
Interrupteur de sécurité à usage général

60 A, 240 V~, 60 Hz

Complete ratings inside
Valeurs nominales complètes à l'intérieur
Información completa de capacidades en el interior

Further instructions inside
Autres instructions à l'intérieur
Instrucciones adicionales en el interior

Made in U.S.A. / Fabriqué aux É.-U. / Hecho en E.U.A.



⚠ DANGER

HAZARDOUS VOLTAGE WILL CAUSE SEVERE INJURY OR DEATH.

- Never operate switch with cover open.
- Turn OFF power ahead of switch before doing any work on or near the switch.
- Close cover before turning power ON.

TENSION DANGEREUSE. PEUT CAUSER DES BLESSURES GRAVES OU LA MORT.

- Ne jamais manœuvrer l'interrupteur lorsque le couvercle est ouvert.
- Couper l'alimentation en amont de l'interrupteur avant toute intervention. Remplacer les pièces. Fermer le couvercle avant de recommencer à travailler.

⚠ PELIGRO

VOLTAJE PELIGROSO. PUEDE CAUSAR HERIDAS SEVERAS O LA MUERTE.

- Nunca opere el interruptor con la tapa abierta.
- Desconecte la alimentación del interruptor antes de trabajar dentro del mismo. Reemplazar todas las partes. Cerrar la cubierta antes de reanudar el trabajo.

30-43080

596

596-

596