







14 sineOn RoHS
Please refer to the table on the back of the instruction manual
PV Negative/Neg
PV Positive/Pos
PV Ground/ND



840-00385-11
100VDC 20A
+79°C 2053

840-00387-14
250VAC 20A
+79°C 2122

STOP





DC

AC

225

640-00395-11
100VDC 20A
+79°C / 2053

Do not disconnect
under load

FTL



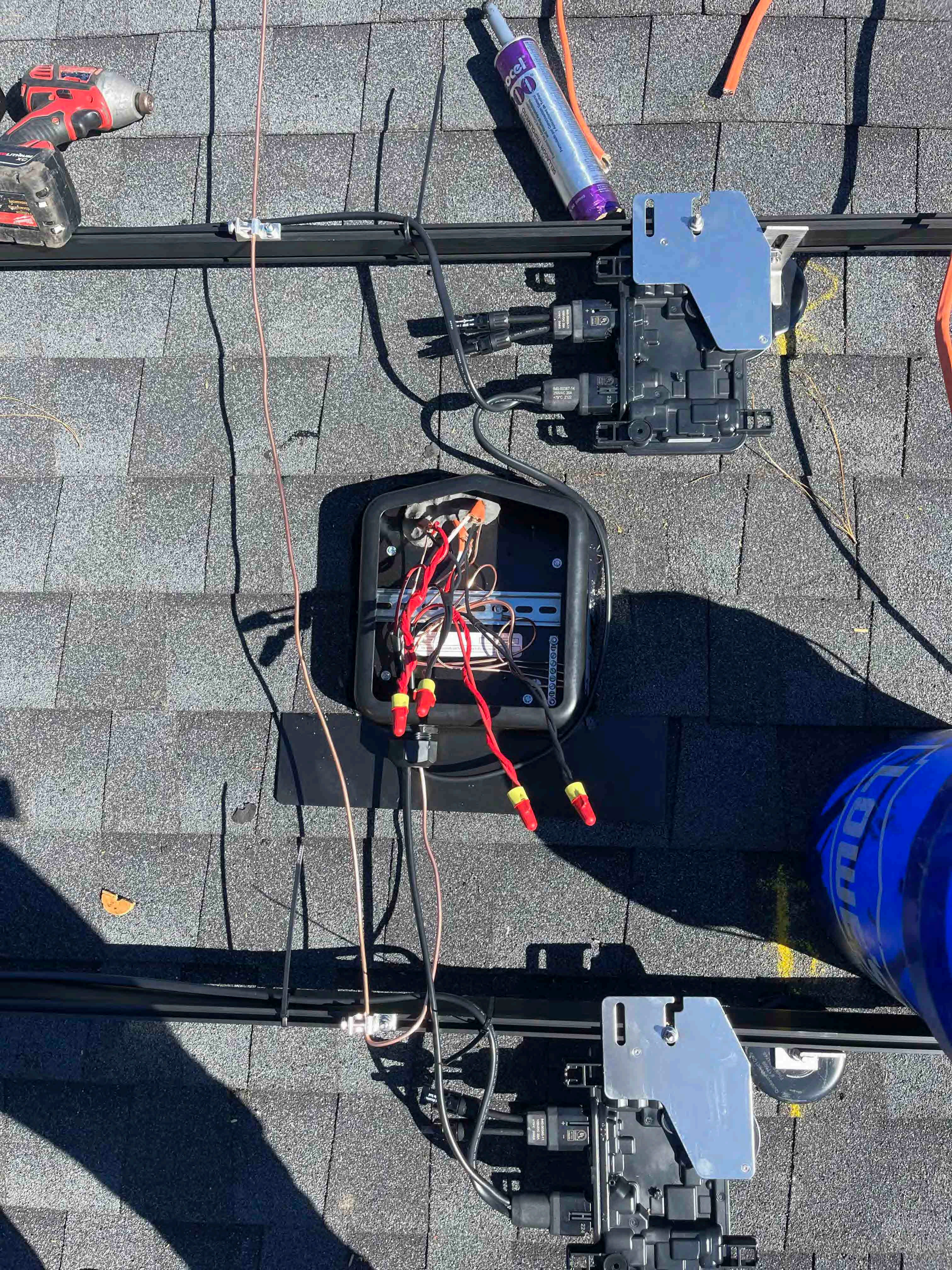
oil res | sunlight resistant FT4 SIMSON ROHS

840-00385-11
100VDC 20A
+79°C 2053

UN RES -40C (UK)

Do not disconnect
under load







TV Negative
manual

550000 (ULL) Type



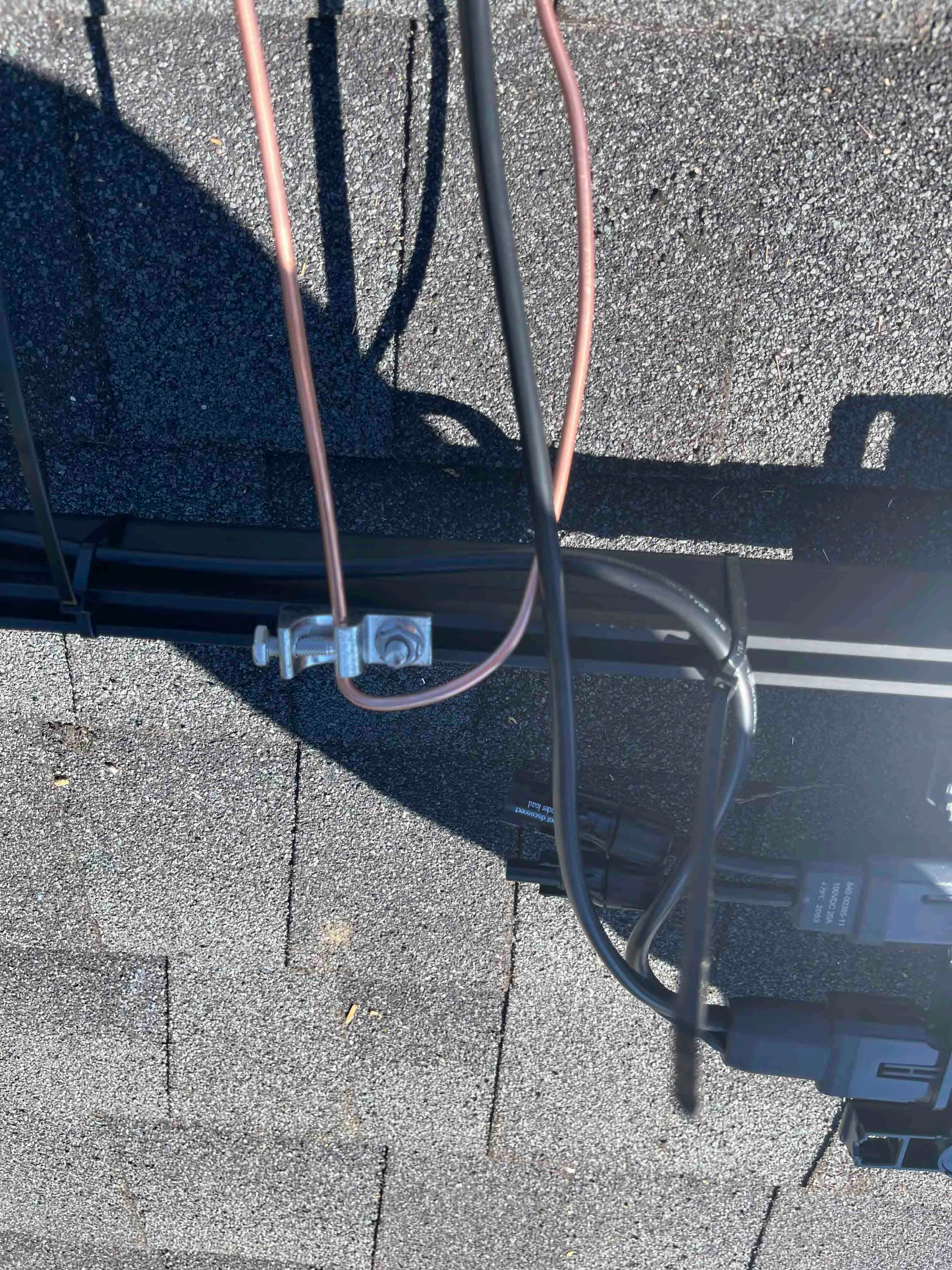
Positive PV Negative/N
For terminal heads, tion



SOLADECK
SOLAR INVERTER
1500W
24VDC
120VAC
20A
77°F C 25°C
WARNING
AVERTISSEMENT

Prefer 20
SEALANT
FOR ROOFING
AND GUTTERS
100% POLYURETHANE
ADHESIVE
11.5 LITERS

LOWE'S



100VDC 20A
4/9/11 C 2003

not disconnect
under load



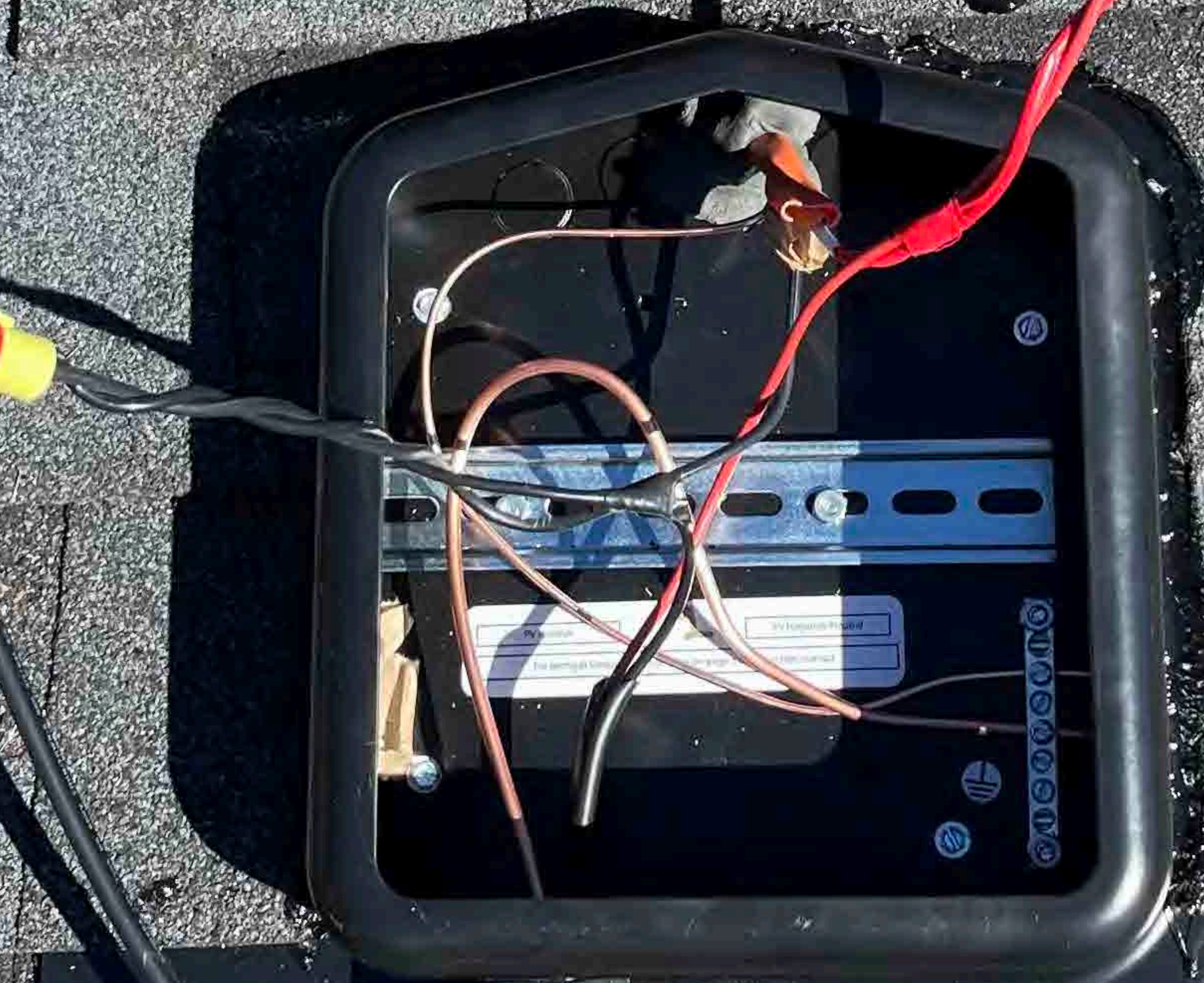


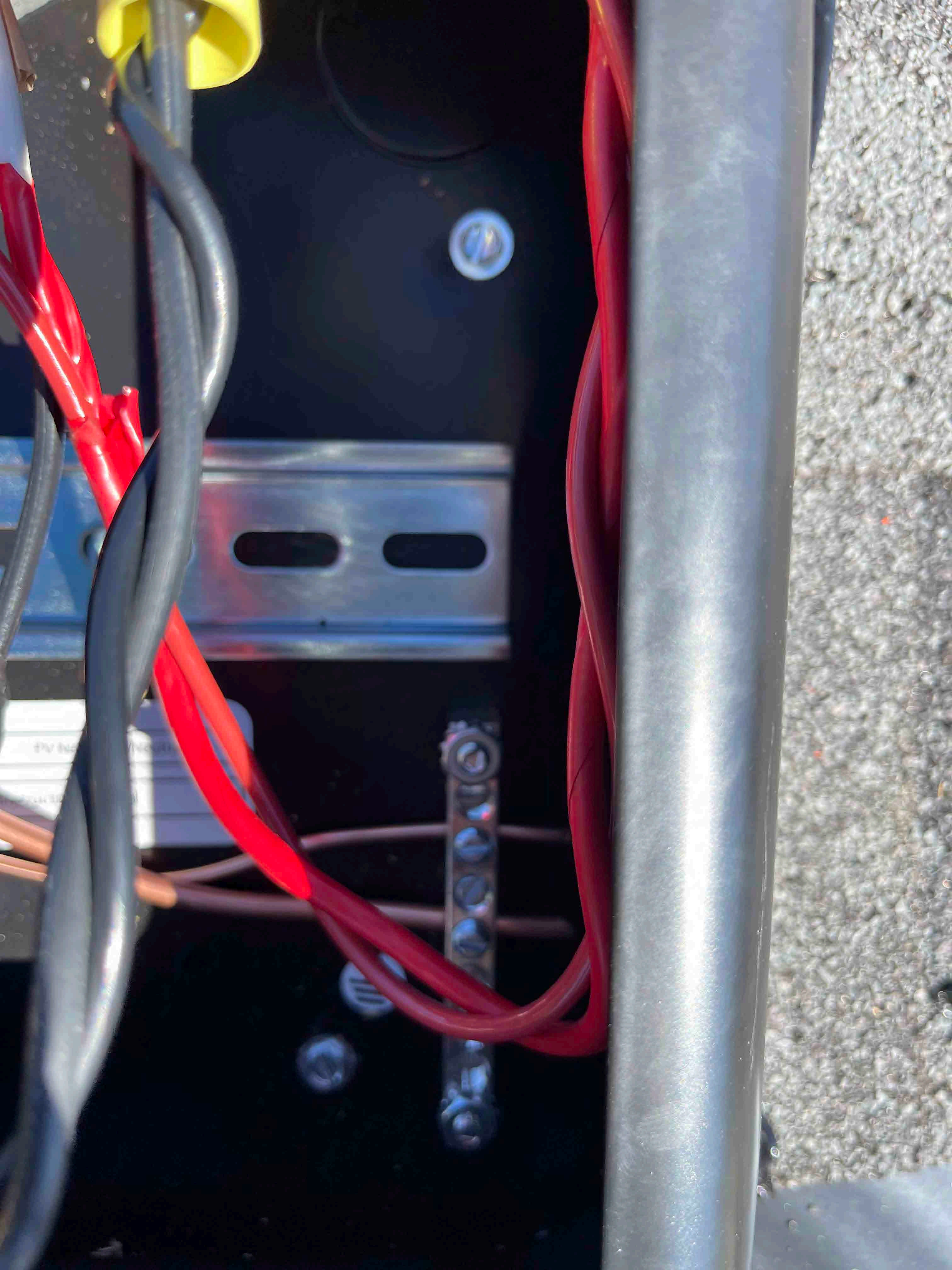
unlight resistant FT4 5INBEN ROHS

Do not disconnect
under load

RES -40C









ROHS

Quick
17659
EA93748
Tens Int'l Corp

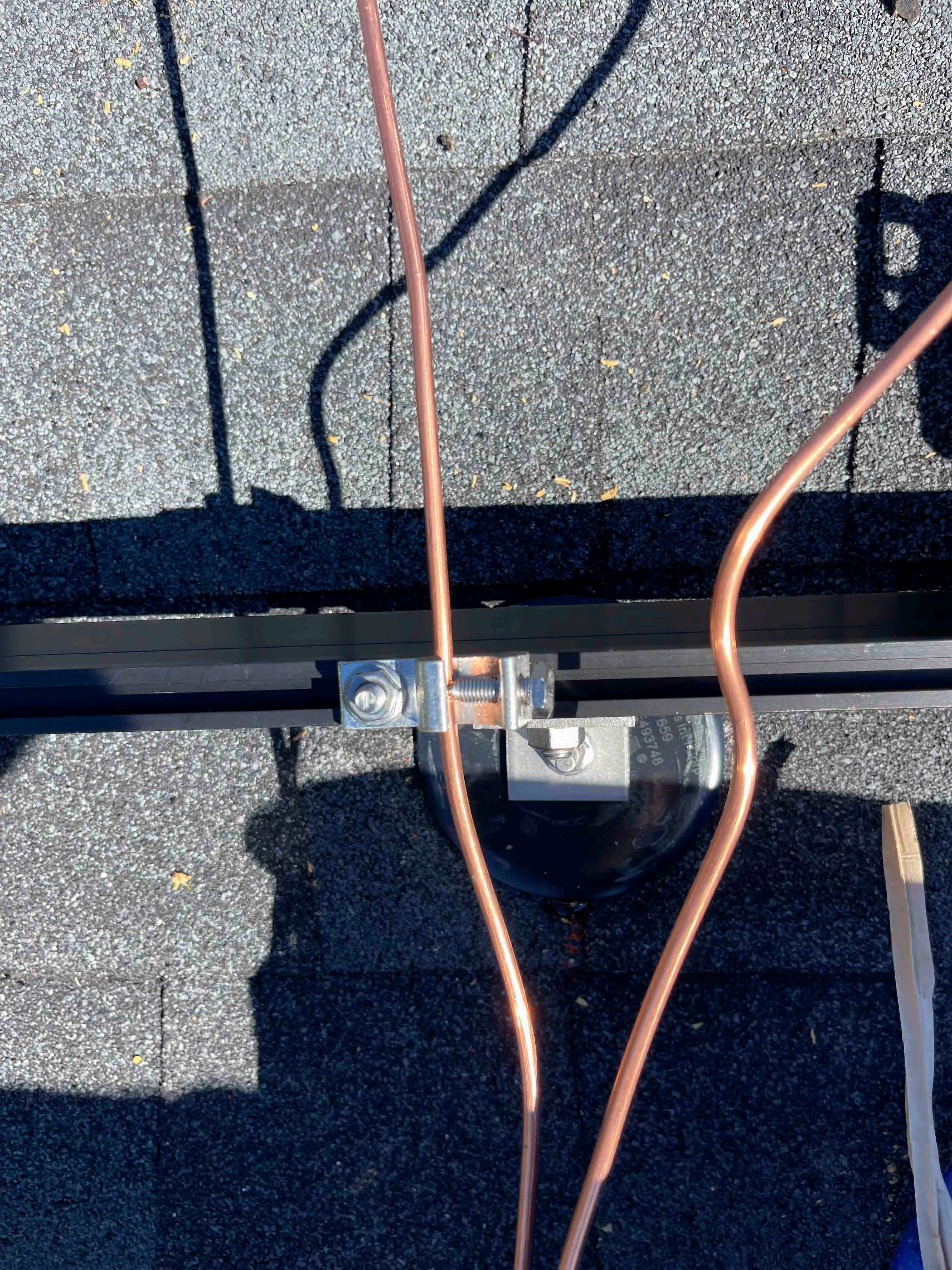
sunlight resistant FDA approved

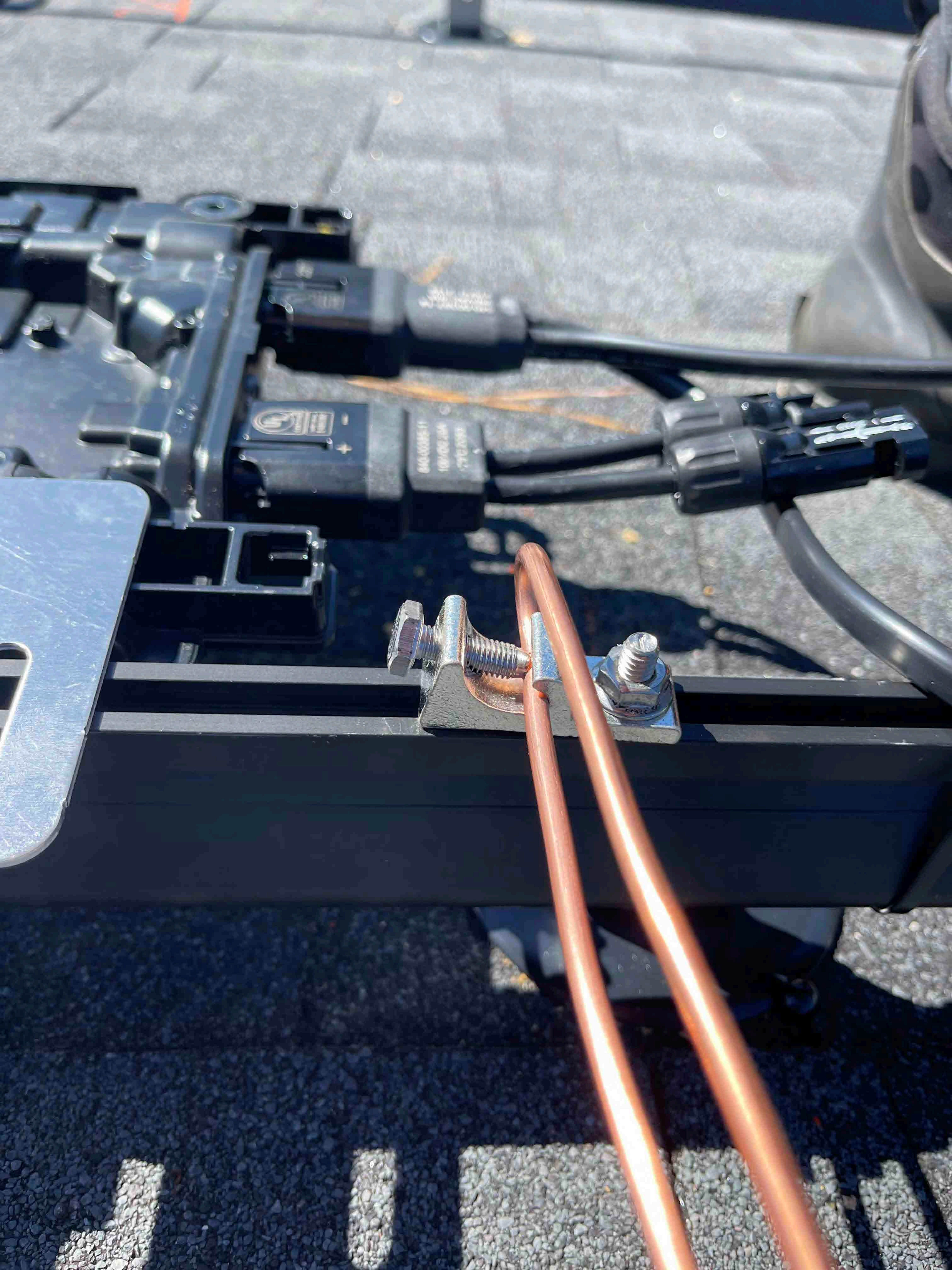
PAWG - made with recycled



SOLADECK
Model: S1000-1000
Power: 1000W
Voltage: 12V
Current: 83.3A
Dimensions: 100x100x50mm













REC

REC Alpha Black Series
REC365AA Black
Serial Number: FBB-4008390506

Phone: +65 6495 9228
www.recgroup.com

Power Output (Pmax)	365 W
Watt Class Sorting	0/+5 W
Power Production Tolerance	+/- 3 %
Rated Voltage (Vmpp)	37.1 V
Rated Current (Impp)	9.85 A
Open Circuit Voltage (Voc) (+/- 3%)	44.0 V
Short Circuit Current (Isc) (+/- 3%)	10.52 A
Maximum System Voltage (Vsys)	1000 V
Maximum Series Fuse (DC) (UL)	25 A
Maximum Series Fuse (DC) (IEC)	25 A
Design Load	+4666 / -2666 Pa*
Maximum Test Load	+7000 / -4000 Pa*

(Values at STC: 1000 W/m²AM 1.5, cell temp 25°C)



• Conforms to
UL Std. 61730-1/-2
• Certified to
CSA Std. C22.2#61730-1/-2
• UL Fire Rating Type 2⁺

Intertek
5017774



• IEC 61215
• IEC 61730



Application Class: Safety Class II

See installation manual for *) mechanical installation requirements and
+) installation requirements to achieve a specified system fire class

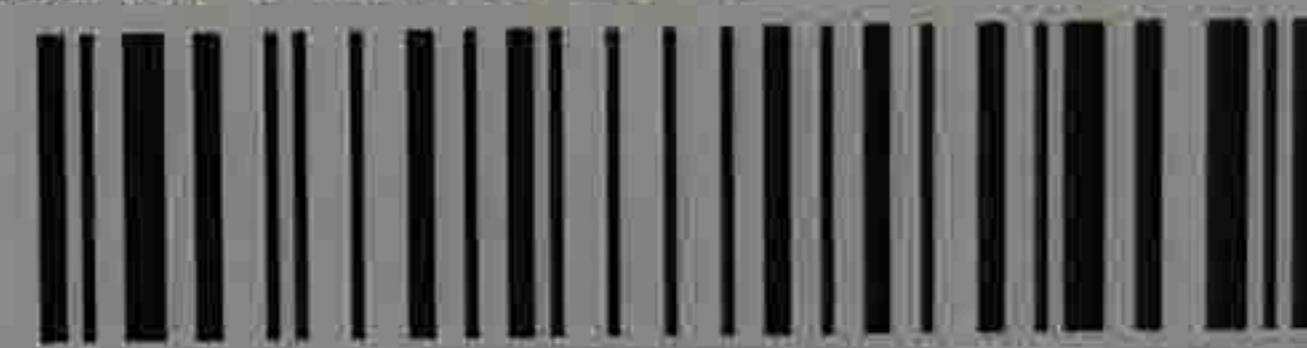
Manufactured: 06.04.2021

Warning electrical hazard. This module produces electricity when exposed to light. Follow all applicable electricity safety precautions. Only qualified personnel should install or perform maintenance work on the module. Be aware of dangerous high DC voltage when connecting or disconnecting modules. Do not damage or scratch the rear surface of the module. Do not handle or install modules when they are wet. Refer to installation and operation manuals before installing, servicing or operating this unit.

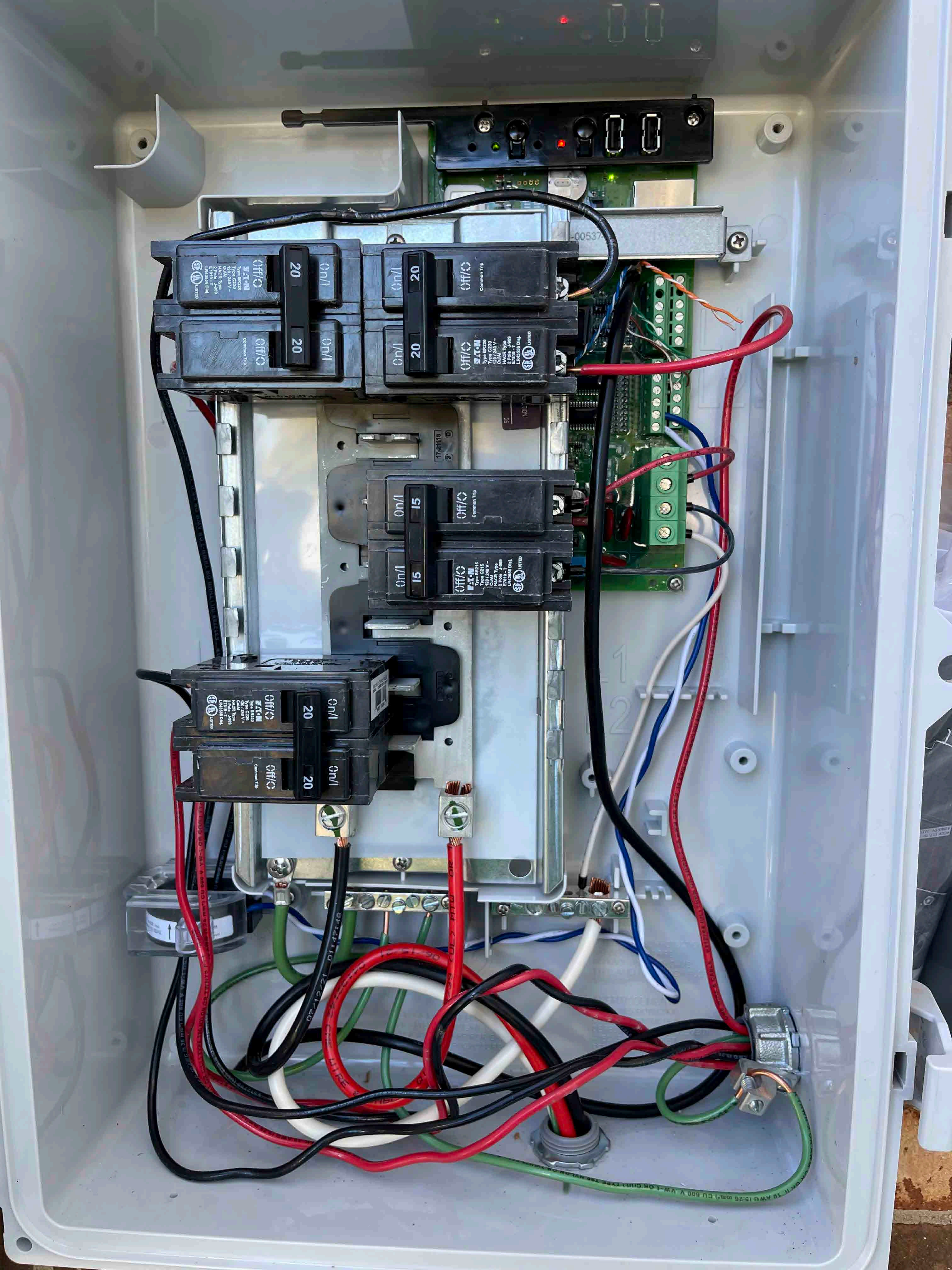
Avertissement: Risque de choc électrique. Ce module solaire produit de l'électricité lorsqu'il est exposé à la lumière. Respecter toutes les précautions de sécurité applicables. L'installation, la mise en service, l'entretien et la réparation du module, doivent être réalisés que par du personnel qualifié. Attention aux éléments sous haute-tension CC pendant la connexion ou déconnexion des modules. Eviter d'endommager la surface arrière du module avec des objets pointus. Ne pas manipuler ni installer les modules s'ils sont humides. Référez vous au manuel d'installation avant l'installation, l'entretien ou l'opération de cet unité.

For field connections, use min. 4 mm²(12 AWG) UL PV wires insulated for a min. of 90°C

CAUTION: DO NOT DISCONNECT UNDER LOAD
ATTENTION: NE PAS DECONNECTER SOUS TENSION
Made in Singapore by REC SOLAR PTE. LTD.
20 TUAS SOUTH AVENUE 14, SINGAPORE 637312, SINGAPORE







00537

20 On/I Off/O
Eaton
Type BQ220
120/240V
2 Pole 2480
Eaton's Div.

20 On/I Off/O
Common Trip

20 On/I Off/O
Eaton
Type BQ220
120/240V
2 Pole 2480
Eaton's Div.

15 On/I Off/O
Eaton
Type BQ115
120/240V
2 Pole 1480
Eaton's Div.

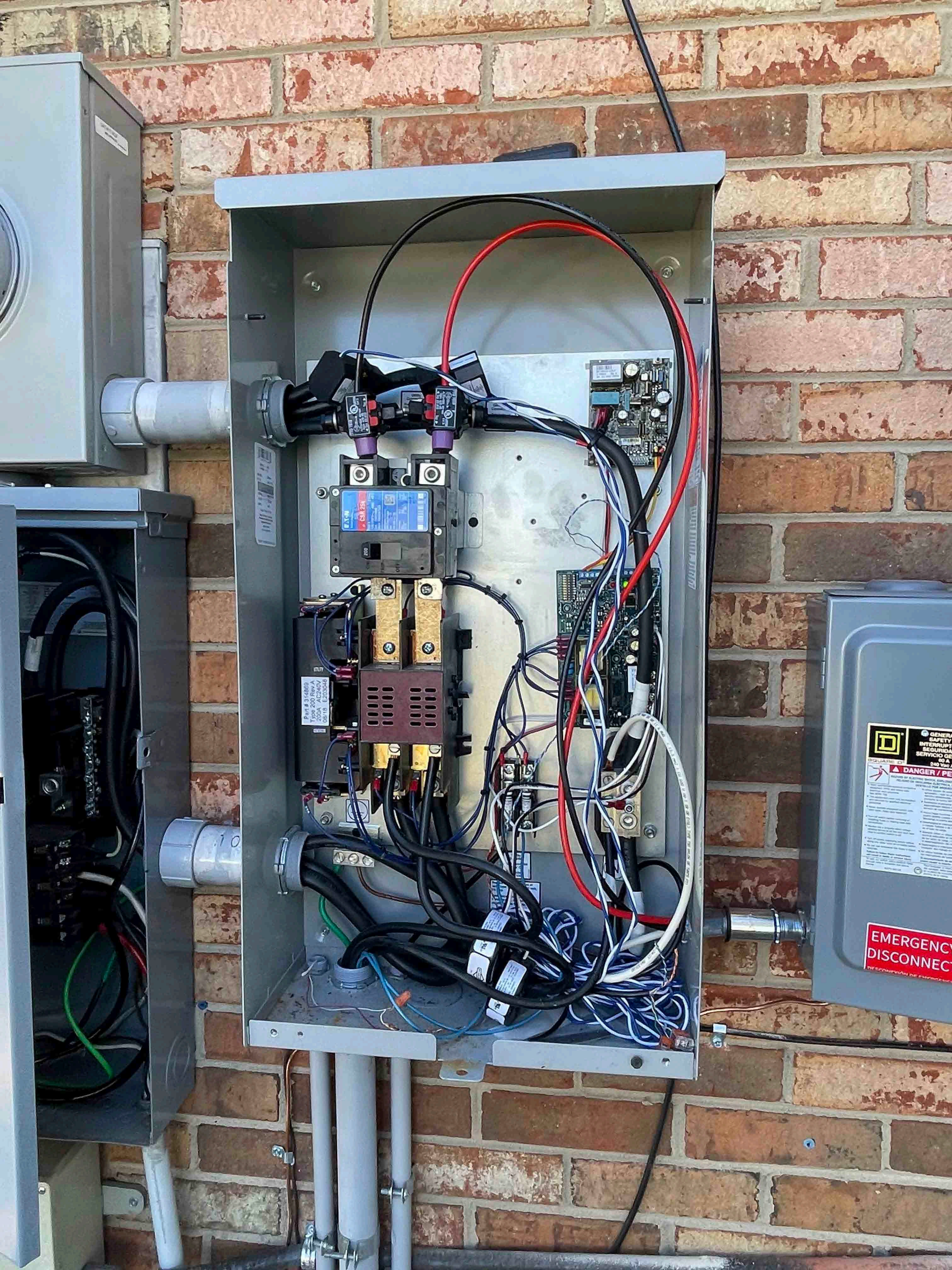
15 On/I Off/O
Common Trip

20 On/I Off/O
Eaton
Type BQ220
120/240V
2 Pole 2480
Eaton's Div.

20 On/I Off/O
Common Trip

10 AWG 15-25 mm² CU 600 V VW-1 OR CHL TYPE T89

8F 14P 10 12C1/20



Part # 151689
200A - AC/240V
08/18 E2030046

Part # 151689
200A - AC/240V
08/18 E2030046

GENERAL SAFETY
INTERUPCIÓN
SEGURIDAD
SERVICIO DE EMERGENCIAS
60 A
240 Volt
DANGER / PE

EMERGENCY DISCONNECT

















32/T
INTERIOR
PS 1005 221
S T

C160757 5 (LUL) TY

ROUND 500 4 M0-15-11-1815



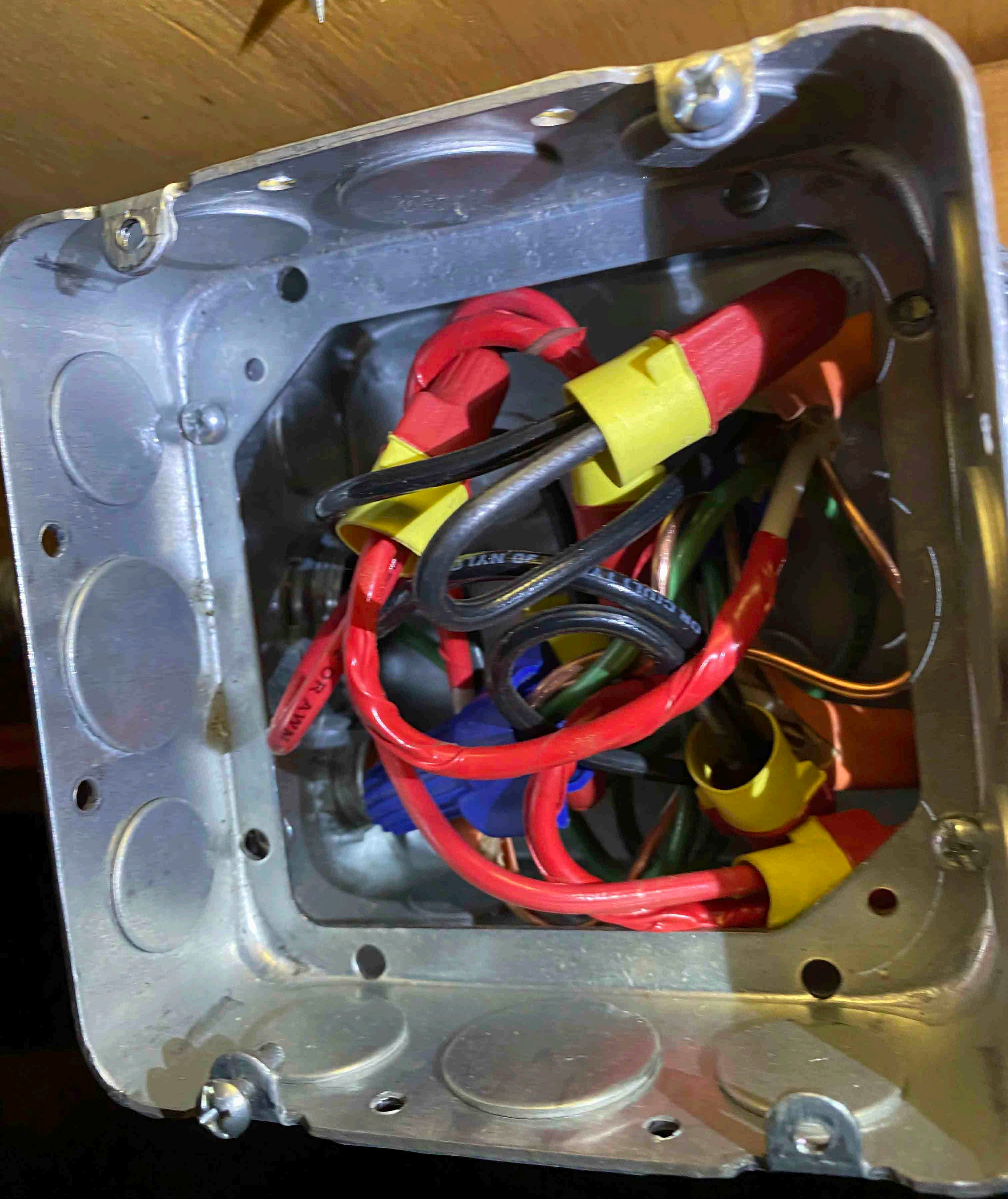


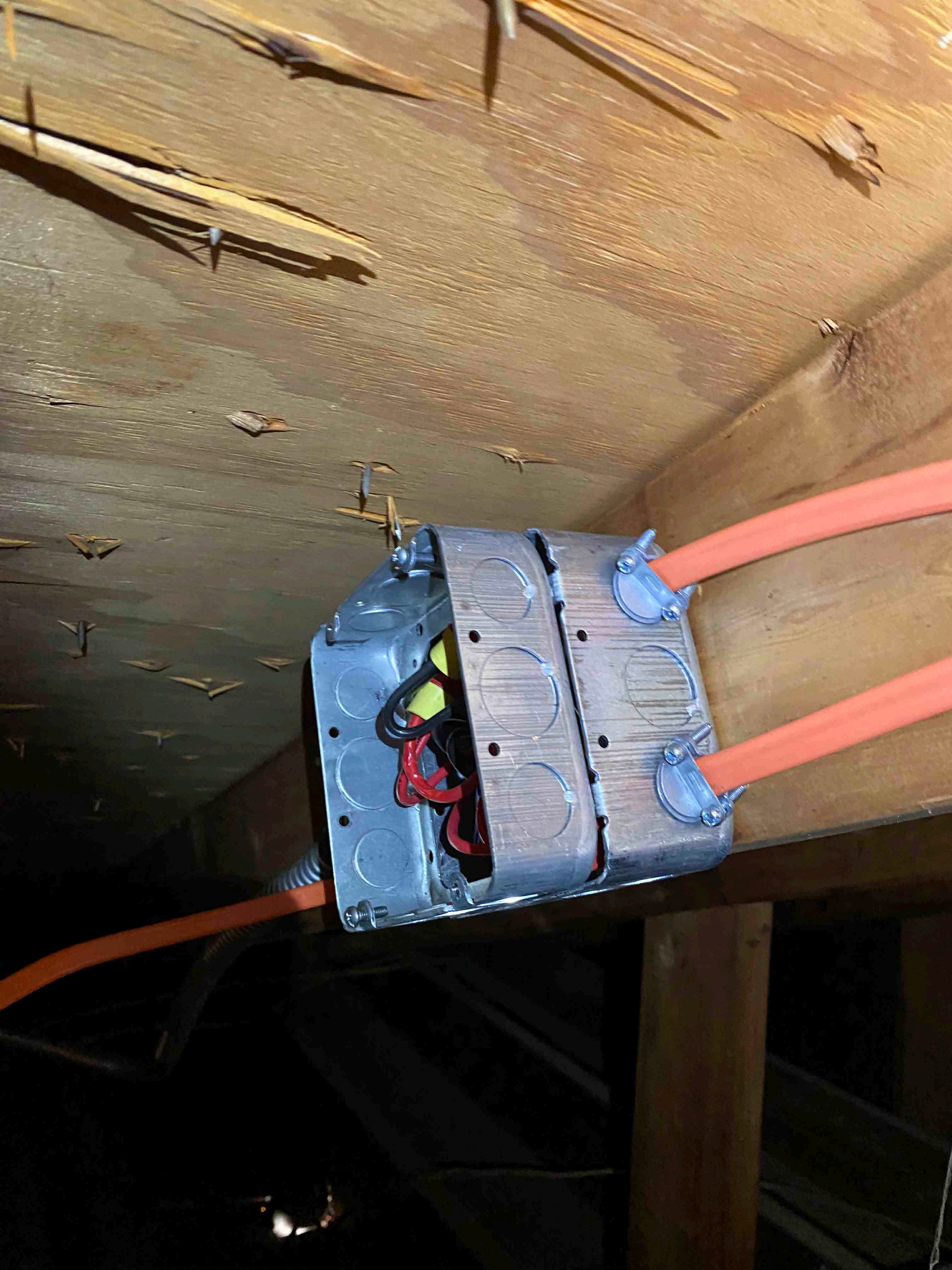














OR THIN-2 OR RUNN OR GR 11 6 AWG < 13.3 mm2

UN C712 E







