













PHOTOVOLTAIC MODULE

Model: JA-SM170P60-60L1-B

Power: 170Wp
Voltage: 18V
Current: 9.44A
Efficiency: 19.2%

Technical specifications

Maximum power (P_{max})
Maximum power voltage (V_{mp})
Maximum power current (I_{mp})
Open circuit voltage (V_{oc})
Short circuit current (I_{sc})
Temperature coefficient (P_{max})
Temperature coefficient (V_{oc})
Temperature coefficient (I_{sc})
Standard test conditions (STC)
Operating temperature range
Dimensions (L x W x H)
Weight



LISTED



WARRANTY INFORMATION



WARNING

DO NOT disassemble, repair or modify the product.
DO NOT touch the front surface of the module.
DO NOT connect the module to a system if the system is not properly grounded.
DO NOT connect the module to a system if the system is not properly grounded.



AVERTISSEMENT

NE PAS démontager, réparer ou modifier le produit.
NE PAS toucher la surface avant du module.
NE PAS connecter le module à un système si le système n'est pas correctement mis à la terre.
NE PAS connecter le module à un système si le système n'est pas correctement mis à la terre.



- Feeding from other systems upgrade is in progress
- Feeding from other systems is in progress



IQ Combiner 3 ES
**Photovoltaic
 Combiner Box**
X-IQ-AM1-240-3-ES



Electrical ratings

Voltage 240VAC, 60HZ
DG Breakers 80A MAX (combined)
DG Inputs 64A MAX (combined)
Output 65A MAX, 90A MAX Feeder COPD
Temperature 46°C MAX ambient
 Use only Eaton BR series Breakers (80A max)

S/N:

202121086411

P/W:

2021082011

Disturbed water and DG Combiner Box - do not add loads to DG
 Safety Breaker not used for backfeed

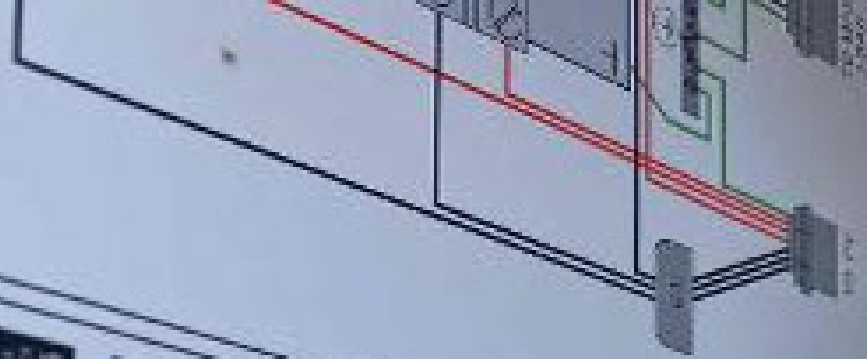
Configuration	Wire sizes	Rating
DG Circuit	14-16 AWG	2.5 Amp (2.5 MW)
	8-10 AWG	2.5 Amp (2.5 MW)
	6-10 AWG	2.5 Amp (2.5 MW)
Sub-panel breaker only	4-10-10 AWG	3.0 Amp (3.0 MW)
	14-16 AWG	2.5 Amp (2.5 MW)
	8-10 AWG	2.5 Amp (2.5 MW)
Feeder and ground	14-16 AWG	2.5 Amp (2.5 MW)
	8-10 AWG	2.5 Amp (2.5 MW)
	6-10 AWG	2.5 Amp (2.5 MW)

Support equipment and rated with 240V
 Input 115V, 2000VA or 2500VA (max) and all input wires
 must be 14-16 AWG, 2000VA or 2500VA (max)

UL 1741, 1742, 1743, 1744, 1745, 1746, 1747, 1748, 1749, 1750, 1751, 1752, 1753, 1754, 1755, 1756, 1757, 1758, 1759, 1760, 1761, 1762, 1763, 1764, 1765, 1766, 1767, 1768, 1769, 1770, 1771, 1772, 1773, 1774, 1775, 1776, 1777, 1778, 1779, 1780, 1781, 1782, 1783, 1784, 1785, 1786, 1787, 1788, 1789, 1790, 1791, 1792, 1793, 1794, 1795, 1796, 1797, 1798, 1799, 1800, 1801, 1802, 1803, 1804, 1805, 1806, 1807, 1808, 1809, 1810, 1811, 1812, 1813, 1814, 1815, 1816, 1817, 1818, 1819, 1820, 1821, 1822, 1823, 1824, 1825, 1826, 1827, 1828, 1829, 1830, 1831, 1832, 1833, 1834, 1835, 1836, 1837, 1838, 1839, 1840, 1841, 1842, 1843, 1844, 1845, 1846, 1847, 1848, 1849, 1850, 1851, 1852, 1853, 1854, 1855, 1856, 1857, 1858, 1859, 1860, 1861, 1862, 1863, 1864, 1865, 1866, 1867, 1868, 1869, 1870, 1871, 1872, 1873, 1874, 1875, 1876, 1877, 1878, 1879, 1880, 1881, 1882, 1883, 1884, 1885, 1886, 1887, 1888, 1889, 1890, 1891, 1892, 1893, 1894, 1895, 1896, 1897, 1898, 1899, 1900, 1901, 1902, 1903, 1904, 1905, 1906, 1907, 1908, 1909, 1910, 1911, 1912, 1913, 1914, 1915, 1916, 1917, 1918, 1919, 1920, 1921, 1922, 1923, 1924, 1925, 1926, 1927, 1928, 1929, 1930, 1931, 1932, 1933, 1934, 1935, 1936, 1937, 1938, 1939, 1940, 1941, 1942, 1943, 1944, 1945, 1946, 1947, 1948, 1949, 1950, 1951, 1952, 1953, 1954, 1955, 1956, 1957, 1958, 1959, 1960, 1961, 1962, 1963, 1964, 1965, 1966, 1967, 1968, 1969, 1970, 1971, 1972, 1973, 1974, 1975, 1976, 1977, 1978, 1979, 1980, 1981, 1982, 1983, 1984, 1985, 1986, 1987, 1988, 1989, 1990, 1991, 1992, 1993, 1994, 1995, 1996, 1997, 1998, 1999, 2000

Designed by ENPHASE Electronics, Inc.
 Made in USA

For I





PRIMO
PROTEZIONE STRADA
PROTEZIONE STRADA

Modello	PRIMO
Descrizione	Barriera di protezione stradale
Materiali	Acciaio zincato a caldo, PVC
Dimensioni	Altezza: 1,20 m; Larghezza: 1,20 m
Caratteristiche	Resistente agli urti, facile installazione
Accessori	Kit di montaggio, manuali
Garanzia	24 mesi

Questo prodotto è conforme alle norme CE e alla direttiva 2006/42/CE. Per maggiori informazioni, visitate il sito www.primo.com.



WARNING

READ the professional instructions manual (included in package) before installation. Do not attempt to install this product if you are not a qualified professional. The manufacturer is not responsible for any damage caused by incorrect installation.

NEB modulare struttura per apparecchiature inating costruttive



AVERTISSEMENT

NEB modulare struttura per apparecchiature inating costruttive

PRIMO barriere di protezione stradale sono conformi alle norme CE e alla direttiva 2006/42/CE. Per maggiori informazioni, visitate il sito www.primo.com.

PRIMO barriere di protezione stradale sono conformi alle norme CE e alla direttiva 2006/42/CE. Per maggiori informazioni, visitate il sito www.primo.com.



UL LISTED



JINKO SOLAR

18000 BTU BTU 18000 BTU BTU 18000 BTU BTU 18000 BTU BTU
18000 BTU BTU 18000 BTU BTU 18000 BTU BTU 18000 BTU BTU
18000 BTU BTU 18000 BTU BTU 18000 BTU BTU 18000 BTU BTU
18000 BTU BTU 18000 BTU BTU 18000 BTU BTU 18000 BTU BTU

PHOTOVOLTAIIC MODULE

Model: JSM60-120P-1000

Module Voltage Type: 120V/1000W

Maximum Power Point
Short Circuit Current (SCC)
Open Circuit Voltage (OCV)
Maximum Power Point Voltage (MPPV)
Temperature Coefficient
Temperature Coefficient (Pmax)
Temperature Coefficient (Vmpp)
Temperature Coefficient (Isc)
Temperature Coefficient (Is)
Temperature Coefficient (Isc)
Temperature Coefficient (Is)
Temperature Coefficient (Isc)
Temperature Coefficient (Is)
Temperature Coefficient (Isc)
Temperature Coefficient (Is)

System by JSM60-120P-1000
Maximum Power Point Voltage (MPPV)
Maximum Power Point Current (MPPC)
Maximum Power Point Power (MPP)
Maximum Power Point Efficiency (MPPeff)
Maximum Power Point Temperature (MPPtemp)

WARNING

Do not touch the solar cells or the junction box when the module is exposed to sunlight. The solar cells can become extremely hot and may cause burns. Do not touch the solar cells or the junction box when the module is exposed to sunlight. The solar cells can become extremely hot and may cause burns. Do not touch the solar cells or the junction box when the module is exposed to sunlight. The solar cells can become extremely hot and may cause burns.

AVERTISSEMENT

Ne pas toucher les cellules solaires ou le boîtier de jonction lorsque le module est exposé à la lumière du soleil. Les cellules solaires peuvent devenir extrêmement chaudes et causer des brûlures. Ne pas toucher les cellules solaires ou le boîtier de jonction lorsque le module est exposé à la lumière du soleil. Les cellules solaires peuvent devenir extrêmement chaudes et causer des brûlures. Ne pas toucher les cellules solaires ou le boîtier de jonction lorsque le module est exposé à la lumière du soleil. Les cellules solaires peuvent devenir extrêmement chaudes et causer des brûlures.





Model	Part No.	Rev.	Qty.	Notes
120VAC	120VAC	1	1	
240VAC	240VAC	1	1	
300VAC	300VAC	1	1	
360VAC	360VAC	1	1	
480VAC	480VAC	1	1	
600VAC	600VAC	1	1	
720VAC	720VAC	1	1	
840VAC	840VAC	1	1	
960VAC	960VAC	1	1	
1080VAC	1080VAC	1	1	
1200VAC	1200VAC	1	1	
1320VAC	1320VAC	1	1	
1440VAC	1440VAC	1	1	
1560VAC	1560VAC	1	1	
1680VAC	1680VAC	1	1	
1800VAC	1800VAC	1	1	
1920VAC	1920VAC	1	1	
2040VAC	2040VAC	1	1	
2160VAC	2160VAC	1	1	
2280VAC	2280VAC	1	1	
2400VAC	2400VAC	1	1	
2520VAC	2520VAC	1	1	
2640VAC	2640VAC	1	1	
2760VAC	2760VAC	1	1	
2880VAC	2880VAC	1	1	
3000VAC	3000VAC	1	1	



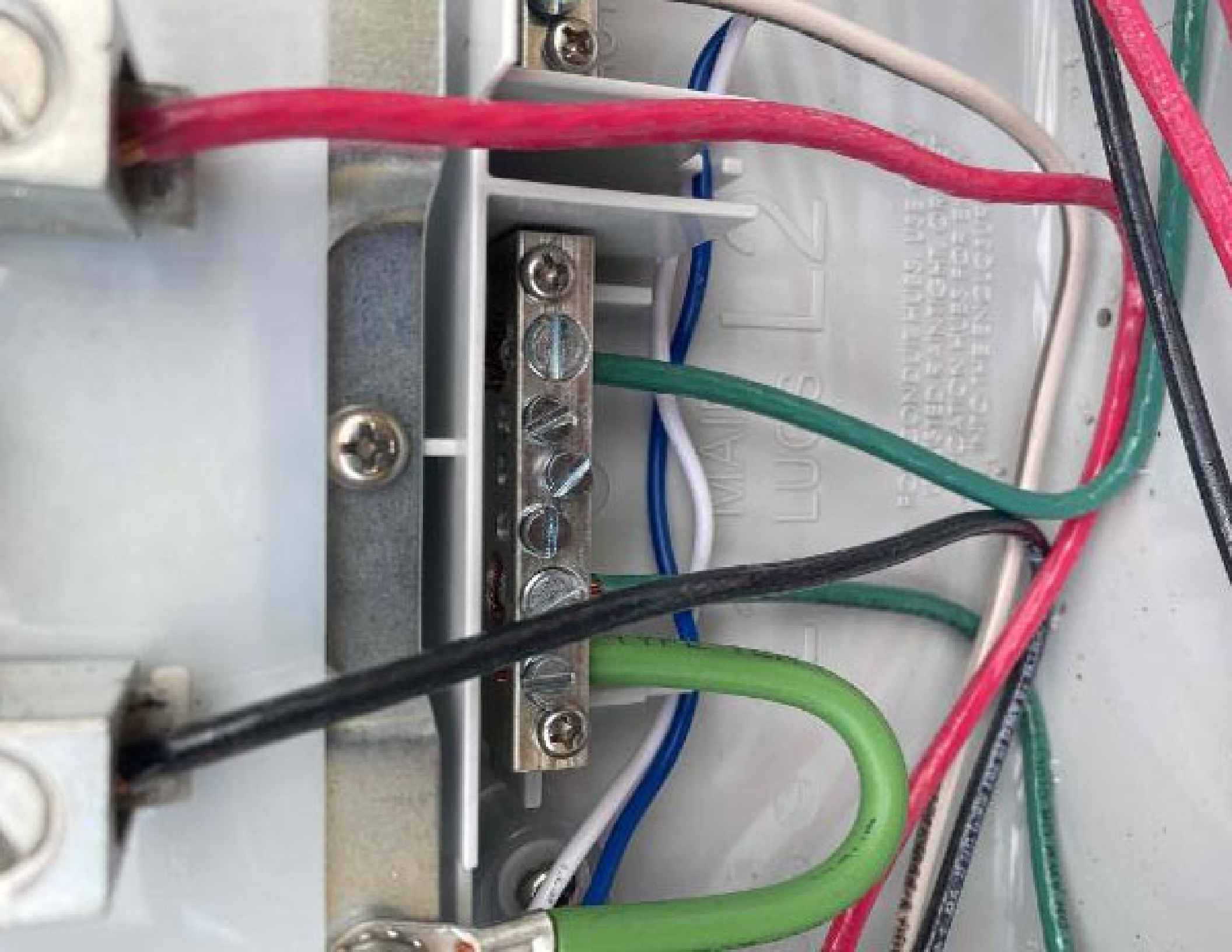
OFF/O
W/AT-2M
Type B200
Type CBES
100 / 240 V -
1 Phase
1 Pole
1.4kA
CIRCUIT
Breaker
100000
100000

OFF/O
Common Trip

OFF/O
W/AT-2M
Type B200
Type CBES
100 / 240 V -
1 Phase
1 Pole
1.4kA
CIRCUIT
Breaker
100000
100000

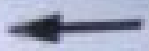


WIRING CONNECTION
WITH TERMINALS
REPLACEABLE
WIRING CONNECTION
REPLACEABLE

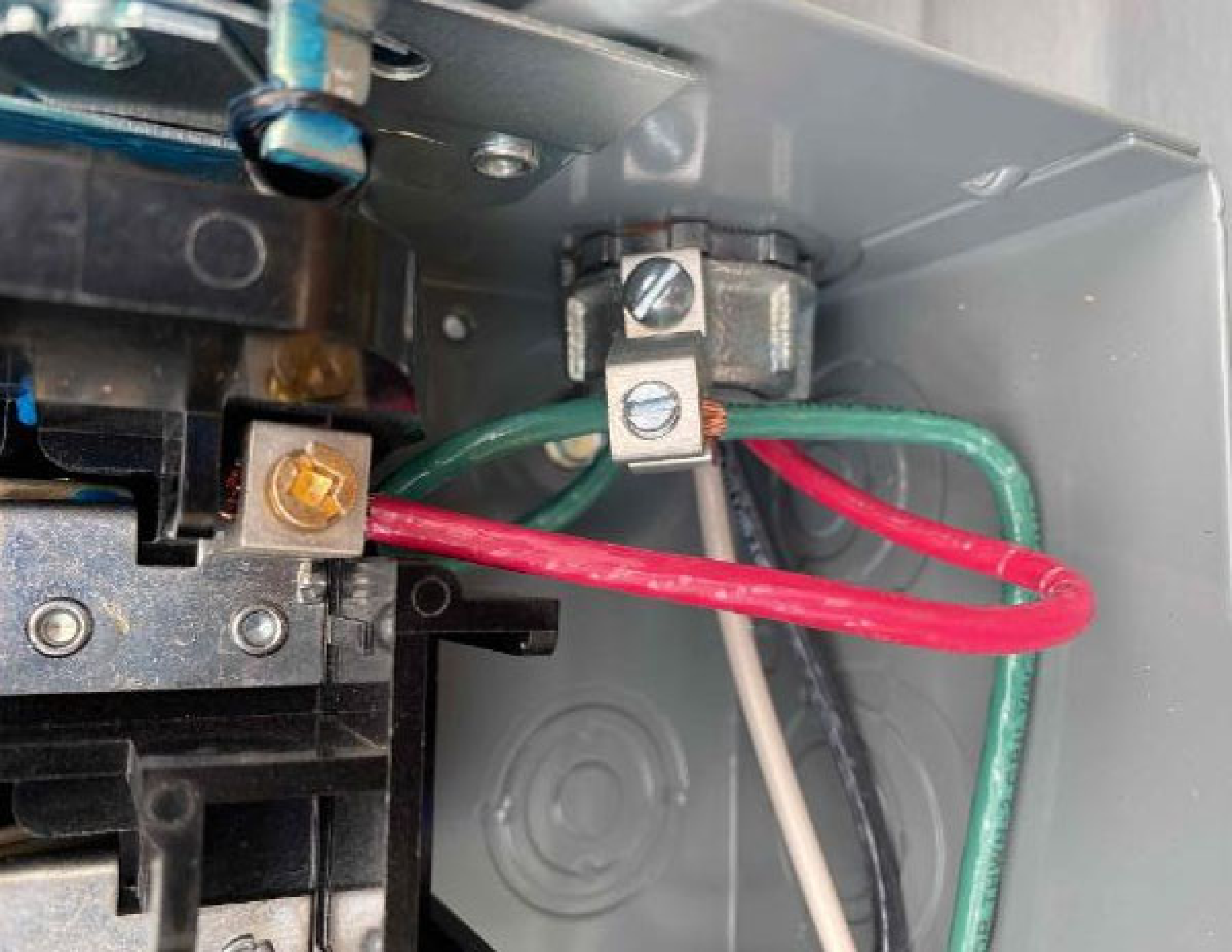




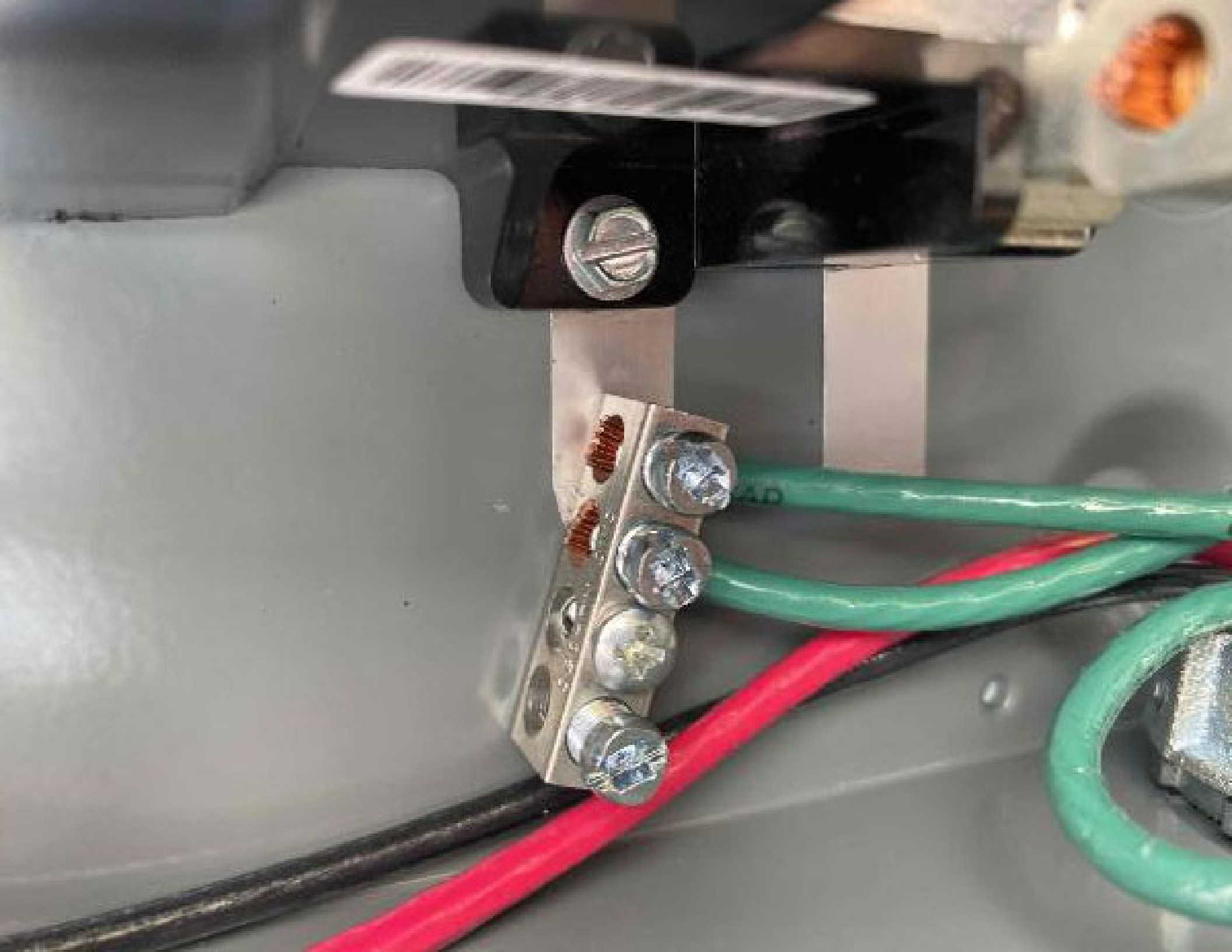
15 AMP
250 VAC
FUSE ONLY
50/60 HZ



148000000







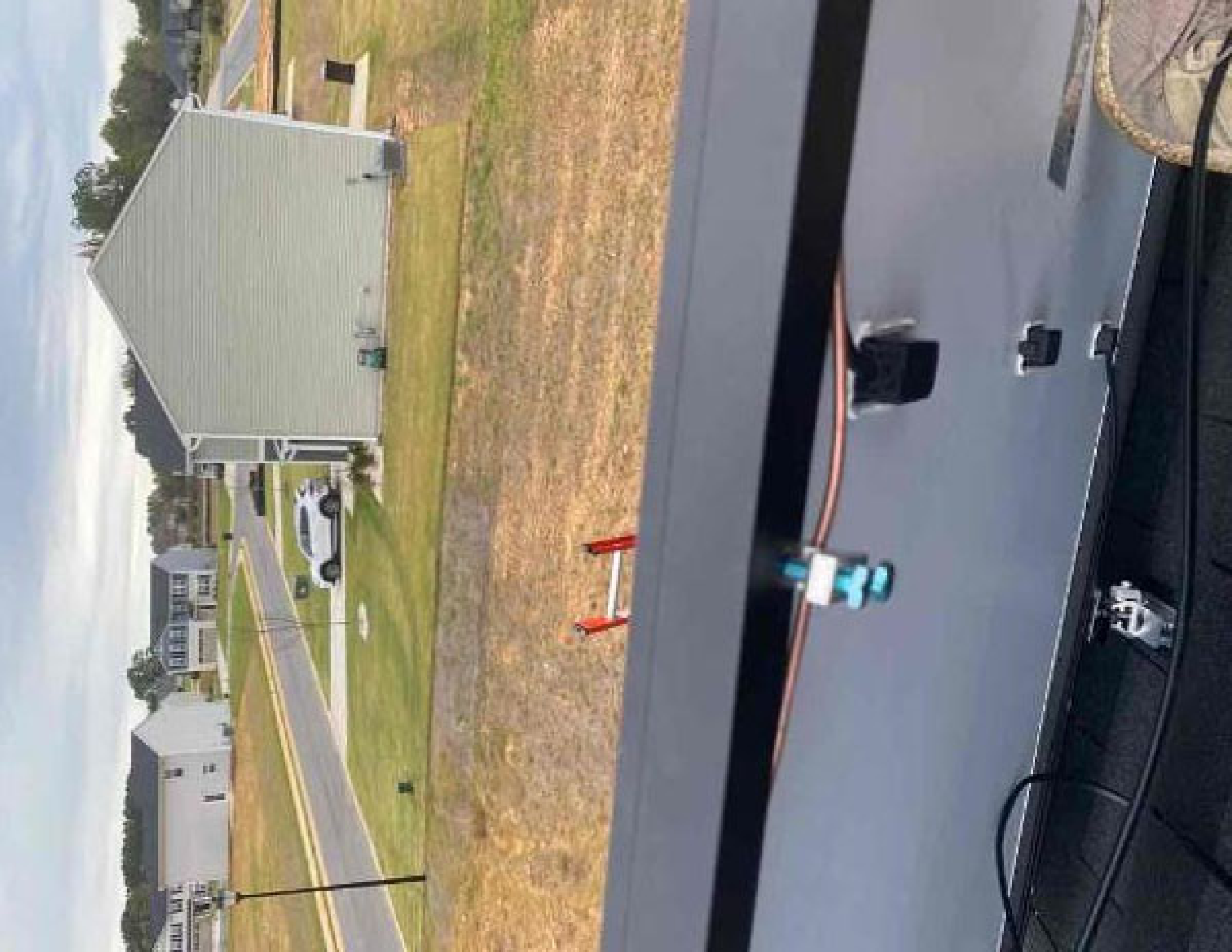
















Job Hazard Analysis

CUSTOMER NAME: **Vapnaci Enisr**

ESTABLISHMENT: **1028/211**

ADDRESS:

HAZARD CATEGORY	POTENTIAL HAZARDS	HAZARD CONTROLS
-----------------	-------------------	-----------------

Ladder Safety	<ul style="list-style-type: none"> Disorientation Defective ladders Electrocution 	Fiberglass ladders, feet + fiberglass good 4 rungs above gutter, ladder hoists OE stripped 2. During another job per permit, all roof crew in harnesses + ropes in, 2 shock packers, breakers/switches open/off, insulatable shorts, hard hats in PPE, grounding safety vests
Fall Protection	<ul style="list-style-type: none"> Fall from 6' or greater 	Bottled workers + hand spigots, gutter ade, shade/AC breaks
Electrical Safety	<ul style="list-style-type: none"> Electrocution ARC Flash 	cones around vehicle, RAZ in drop + hazard zones, slip mats on roof
Heat & Related Issues	<ul style="list-style-type: none"> High heat - 85° to 95° Extreme heat - 100° or higher 	
Public Protection	<ul style="list-style-type: none"> Falling object Slip/trip (SP-1) 	

NEAREST HOSPITAL: **Duke - Raleigh Hospital Rd. 8400 Wake Forest Rd. Raleigh**

SAFETY CONTACT: **911, R.I.M., + PRS Field HR**

Additional Notes: **UNC RPTV**
WESCO Holly Springs Rd

Crew Members		Signature
1	Caithe	<i>[Signature]</i>
2	Wilson	<i>[Signature]</i>
3		
4		
5		
6		

Dave Mathews
Crew Lead (print)

[Signature]
Crew Lead (print)

ON

OFF

⚠ WARNING
ELECTRICAL SHOCK HAZARD
 TERMINALS ON THE LINE AND
 LOAD SIDES MAY BE ENERGIZED
 IN THE OPEN POSITION

**GENERAL DUTY
 SAFETY SWITCH
 INTERRUPTION DE
 SERVICIO GENERAL**
 20 A 125 V AC



⚠ DANGER / PELIGRO
 TERMINALS ON THE LINE AND LOAD SIDES MAY BE ENERGIZED IN THE OPEN POSITION



⚠ DANGER / PELIGRO
 TERMINALS ON THE LINE AND LOAD SIDES MAY BE ENERGIZED IN THE OPEN POSITION

**PHOTOVOLTAIC SYSTEM
 AC DISCONNECT ⚠**

**RATED AC OUTPUT CURRENT
 20 A**
**NOMINAL OPERATING AC VOLTAGE
 125 V**

**RAPID SHUTDOWN SWITCH
 FOR SOLAR PV SYSTEM**

PHOTOVOLTAIC SYSTEM
⚠️ AC DISCONNECT ⚠️

10.0A
120V
RATED AC INPUT CURRENT
MAXIMUM OPERATING AC VOLTAGE

CAUTION: DO NOT INSTALL
ADDITIONAL LOADS IN THIS PANEL

⚠️ WARNING

ELECTRIC SHOCK HAZARD


TERMINALS ON THE LINE AND
LOAD SIDE MAY BE ENERGIZED
IN THE OPEN POSITION

⚠️ WARNING

THIS EQUIPMENT NEEDS TO
BE TESTED BY A QUALIFIED
ELECTRICIAN. ALL ELECTRICAL
SERVICES PROVIDERS MUST VERIFY
SERIAL NUMBER AND VOLTAGE
RANGE OF SUPPLIER.

⚠️ WARNING

ENPHASE, INC. 10000 N. 10TH AVENUE
DENVER, CO 80231-1000
WWW.ENPHASE.COM
1-800-451-7373

 ENPHASE

49

CAUTION: AC CIRCUIT




CAUTION: SOLAR CIRCUIT



SOLAR PV SYSTEM EQUIPPED WITH SAFETY SHUTDOWNS

PLEASE REMEMBER TO ALWAYS USE SAFETY SHUTDOWNS TO DEENERGIZE THE SYSTEM BEFORE WORKING ON THE SYSTEM.



WARNING
 HIGH VOLTAGE
 ELECTRICAL SYSTEM

WARNING
 HIGH VOLTAGE
 ELECTRICAL SYSTEM

WARNING
 HIGH VOLTAGE
 ELECTRICAL SYSTEM

WARNING
 HIGH VOLTAGE
 ELECTRICAL SYSTEM

Jimko
SOLAR

PHOTOVOLTAIC MODULE
Made in Poland

Panel type: G12
Cell type: Mono-crystalline
Module type: Standard
Module size: 1650x990x35mm

Model: JMK-1650-990-35

Power: 330Wp
Voltage: 30V
Current: 11.00A

Temperature coefficient: -0.45%/°C
Operating temperature: -40°C to +85°C

Weight: 18.5kg
Dimensions: 1650x990x35mm

Warranty: 10 years
Manufacturer: Jimko Solar



WARNING

Only qualified personnel should install or perform maintenance work on these modules.
REAR SIDE OF THE MODULES IS NOT TO BE TOUCHED.
DO NOT STARE AT THE SURFACE OF THE MODULES.



AVERTISSEMENT

Seuls les techniciens qualifiés peuvent installer et effectuer les réparations sur ces modules.
NE PAS REGARDER LA SURFACE DES MODULES.
NE PAS TOUCHER LE CÔTÉ ARRIÈRE DES MODULES.
NE PAS REGARDER LA SURFACE DES MODULES.
NE PAS TOUCHER LE CÔTÉ ARRIÈRE DES MODULES.

MINICO

BEHÖRDE FÜR VERKEHRSSACHEN

VERKEHRSSACHEN

Vorname Nachname

...

...

...

...

...

...

...

...

...

...

...

...

...

...

...

...

...

...

...

...

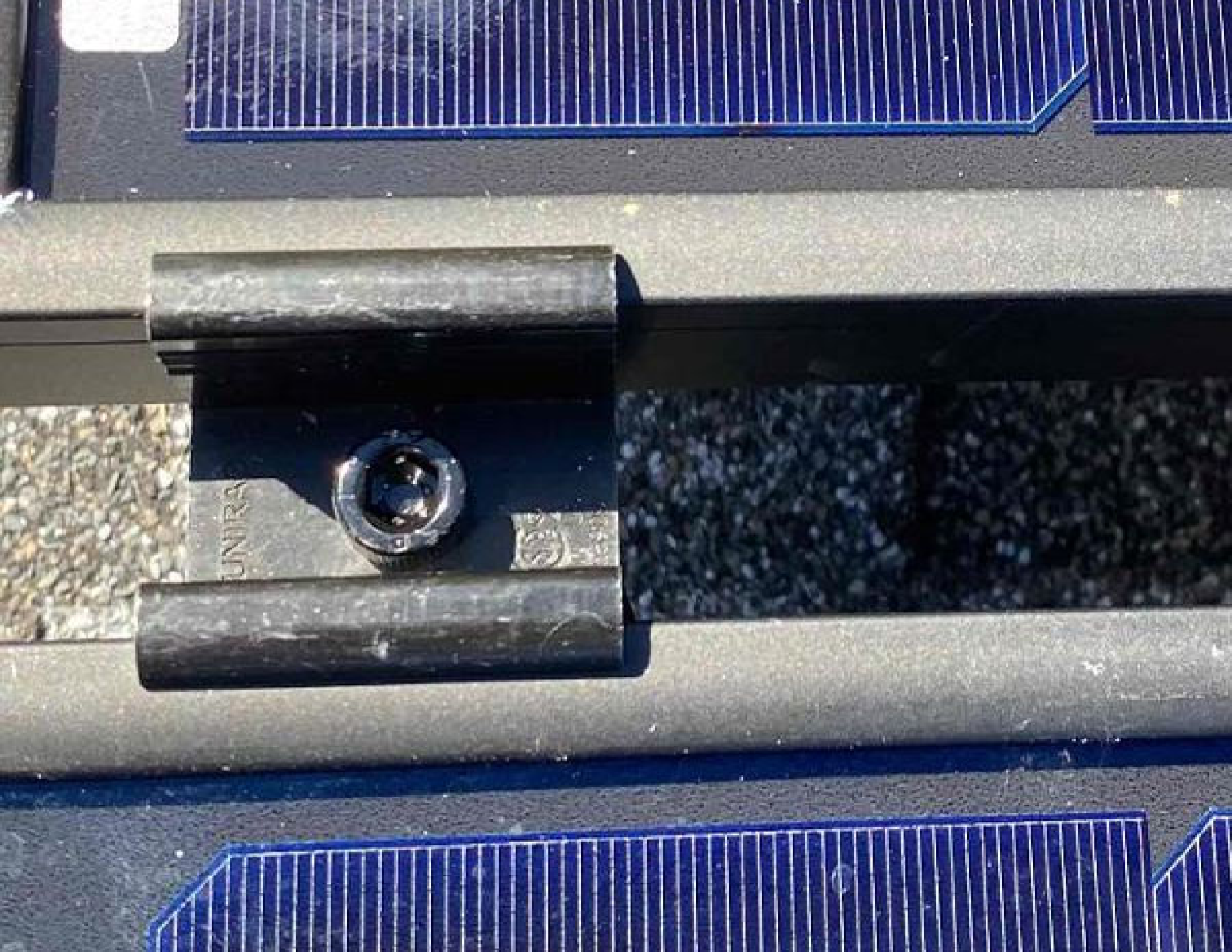
...

...

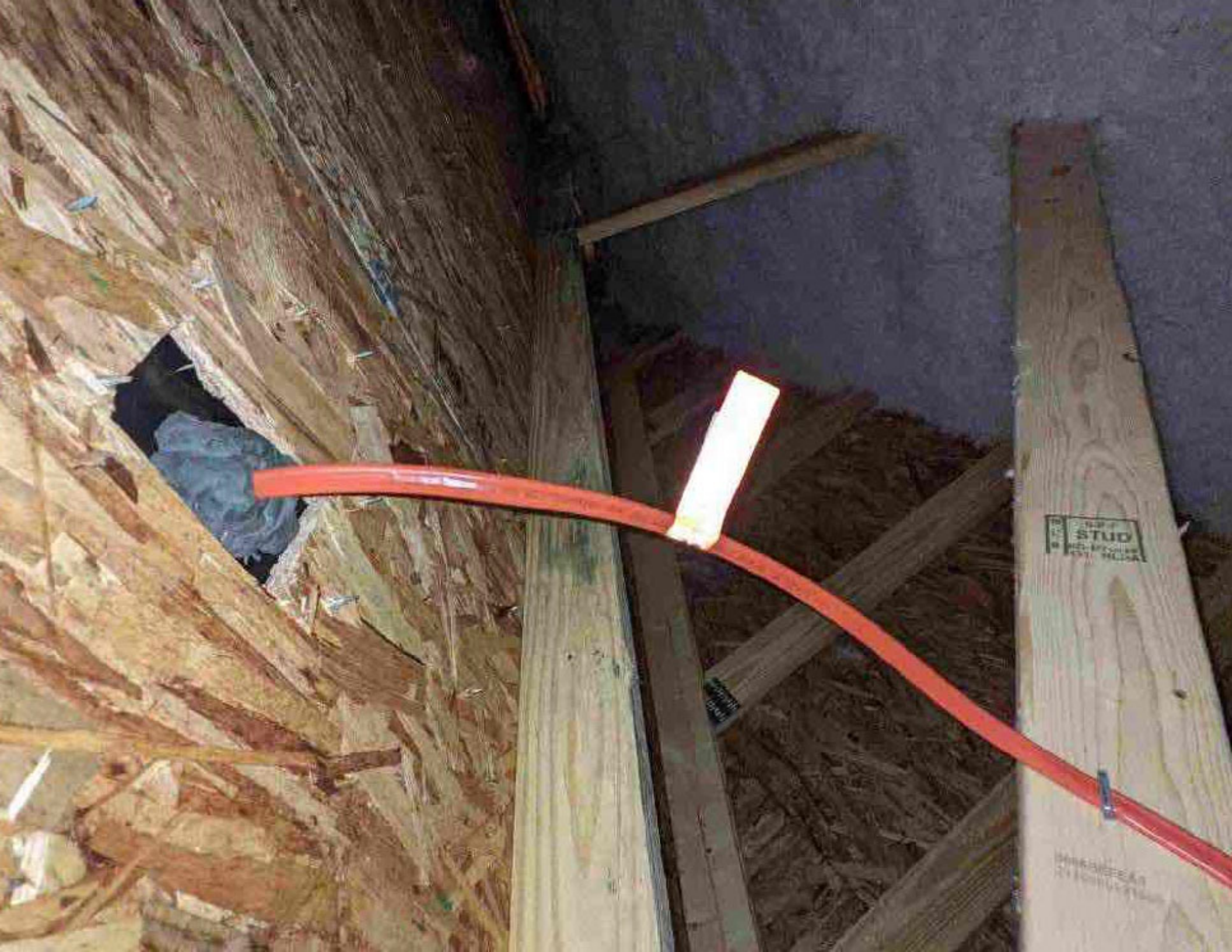


WICHTIG!
Bitte beachten Sie die folgenden Hinweise:
1. Die Fahrzeugnummer ist eindeutig zu identifizieren.
2. Die Fahrzeugnummer ist eindeutig zu identifizieren.
3. Die Fahrzeugnummer ist eindeutig zu identifizieren.
4. Die Fahrzeugnummer ist eindeutig zu identifizieren.
5. Die Fahrzeugnummer ist eindeutig zu identifizieren.
6. Die Fahrzeugnummer ist eindeutig zu identifizieren.
7. Die Fahrzeugnummer ist eindeutig zu identifizieren.
8. Die Fahrzeugnummer ist eindeutig zu identifizieren.
9. Die Fahrzeugnummer ist eindeutig zu identifizieren.
10. Die Fahrzeugnummer ist eindeutig zu identifizieren.
11. Die Fahrzeugnummer ist eindeutig zu identifizieren.
12. Die Fahrzeugnummer ist eindeutig zu identifizieren.
13. Die Fahrzeugnummer ist eindeutig zu identifizieren.
14. Die Fahrzeugnummer ist eindeutig zu identifizieren.
15. Die Fahrzeugnummer ist eindeutig zu identifizieren.
16. Die Fahrzeugnummer ist eindeutig zu identifizieren.
17. Die Fahrzeugnummer ist eindeutig zu identifizieren.
18. Die Fahrzeugnummer ist eindeutig zu identifizieren.
19. Die Fahrzeugnummer ist eindeutig zu identifizieren.
20. Die Fahrzeugnummer ist eindeutig zu identifizieren.





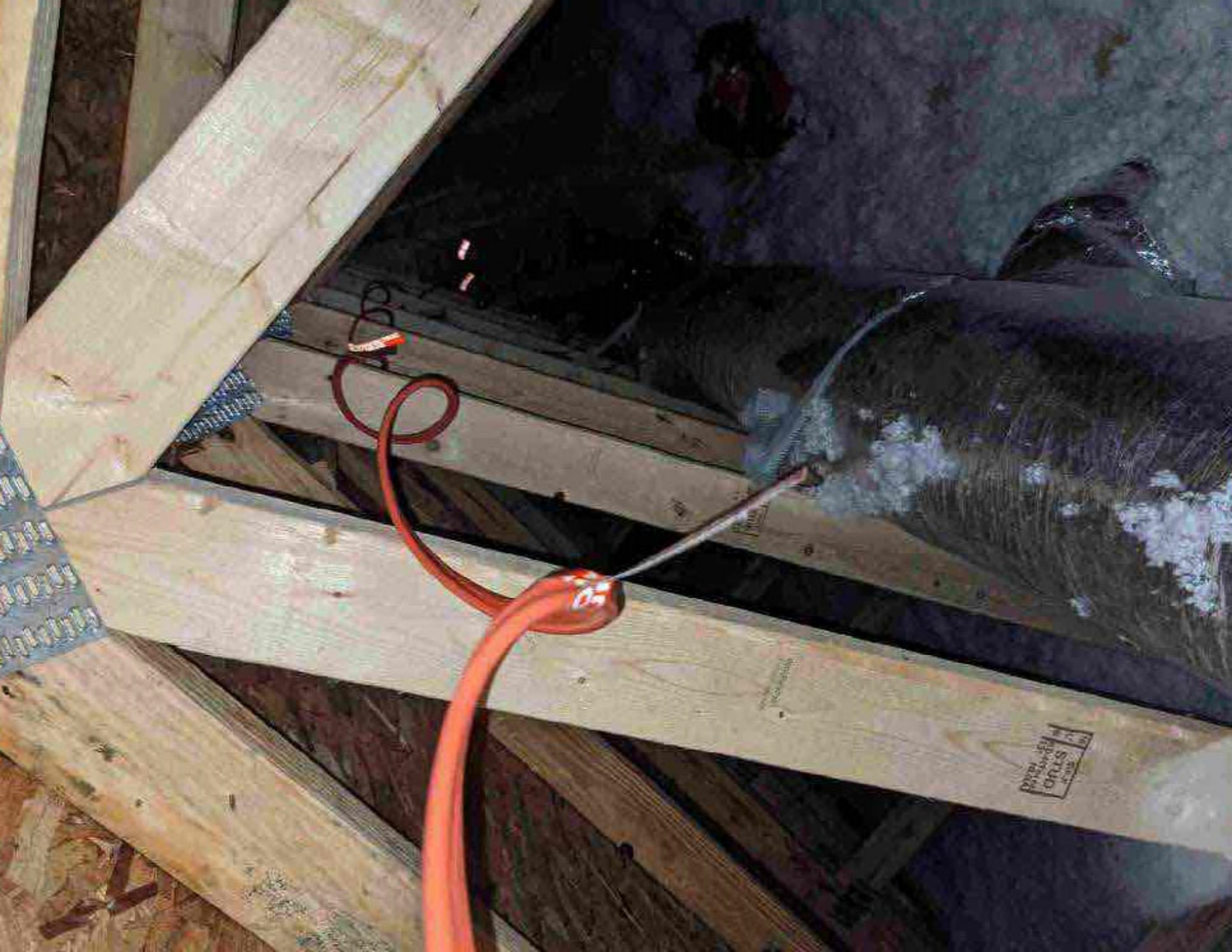
UNIPRA



STUD
1 1/2" x 4" x 8'
SOUTH PLANT

1 1/2" x 4" x 8'
SOUTH PLANT





















147

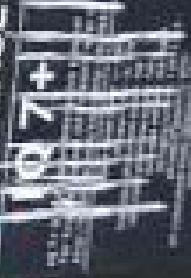
250VAC 20A
79°C 2033
0-00388-14

UL
LISTED
CERTIFIED
E486060





EINPHASE



WARNING

UL

UL



Romex
Simpull

10/2
250 FT

250 FT
26.8m

Romex
Simpull

INDOOR WIRE

INDOOR WIRE

TYPE NM-B

10/2

TYPE NM-B

250 FT

INDOOR WIRE

INDOOR WIRE

INDOOR WIRE

INDOOR WIRE

INDOOR WIRE

INDOOR WIRE

INDOOR WIRE

INDOOR WIRE

INDOOR WIRE

INDOOR WIRE

INDOOR WIRE

INDOOR WIRE

INDOOR WIRE

INDOOR WIRE

INDOOR WIRE

INDOOR WIRE

INDOOR WIRE

INDOOR WIRE

INDOOR WIRE

INDOOR WIRE

INDOOR WIRE

INDOOR WIRE

INDOOR WIRE

INDOOR WIRE

INDOOR WIRE

INDOOR WIRE

INDOOR WIRE

UNIRAC SFM INFINITY RACKING

FOR MOUNTING AND GROUNDING SOLAR SYSTEMS

UL1703, UL2703

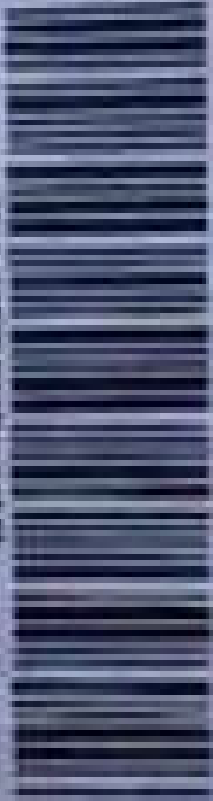
UNIRAC



UNIRAC

BETTER SOLAR STARTS HERE

www.unirac.com



2 5 0 0 2 0 U
SFM MICRORAIL Z
Pack Size: 10

WO/PO# 00A153800
Manufacture date:
Factory Code : 010A



 **UNIRAC**
UNIRAC SYSTEMS, INC.



250120U

50 MM TRIM SPICE CAN

Trade Size

UNIRAC 0042304-00

Manufacture Date: 16-03-2017

Factory Code: 010A





FLASHKIT SPM SLIDER S

0042710

FLASHKIT SPM SLIDER S COMPACT
SMPN Prod. Date: 10
Factory Code: 2-1



0042710-01 0042710-01 0042710-01



FLASHKIT SPM SLIDER S

0042710

FLASHKIT SPM SLIDER S COMPACT
SMPN Prod. Date: 10
Factory Code: 2-1



0042710-01 0042710-01 0042710-01



 **UNIRAC**[®]

BETTER SOLAR STARTS HERE

www.unirac.com



2 5 0 0 1 0 U

SFM SPLICE 6.5"

Pack Size: 10

WO/PO# : 0043309-00

Manufacture date: FEB 2021

Factory Code : 010A

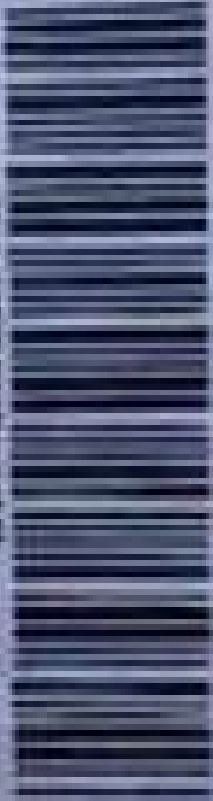




UNIRAC

BETTER SOLAR STARTS HERE

www.unirac.com

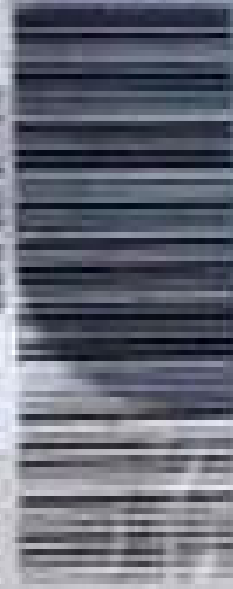


2 5 0 0 2 0 U
SFM MICRORAIL Z
Pack Size: 10

WO/PO# *00A153800*
Manufacture date:
Factory Code : 010A



 **UNIRAC**
SOLAR PANELS



250120U

50MM TRIM SPICE 10K

Pack Size

UNIRAC 0042304-00

Manufacture Date: 16-03-2017

Factory Code: 010A





FLASHKIT SPM SLIDER S

0042710

FLASHKIT SPM SLIDER S COMPACT
SMPN Prod. Date: 10
Factory Code: 2-1



0042710-01 0042710-01 0042710-01



FLASHKIT SPM SLIDER S

0042710

FLASHKIT SPM SLIDER S COMPACT
SMPN Prod. Date: 10
Factory Code: 2-1



0042710-01 0042710-01 0042710-01

 **UNIRAC**[®]

BETTER SOLAR STARTS HERE

www.unirac.com



2 5 0 0 1 0 U

SFM SPLICE 6.5"

Pack Size: 10

WO/PO# : 0043309-00

Manufacture date: FEB 2021

Factory Code : 010A



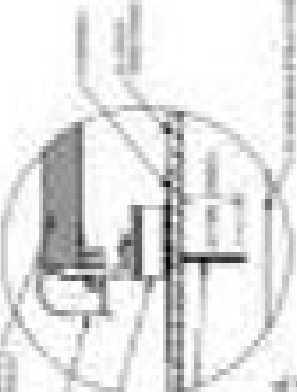
1. **APPROVED PROJECT REPORT**

2. **APPROVED PROJECT REPORT**



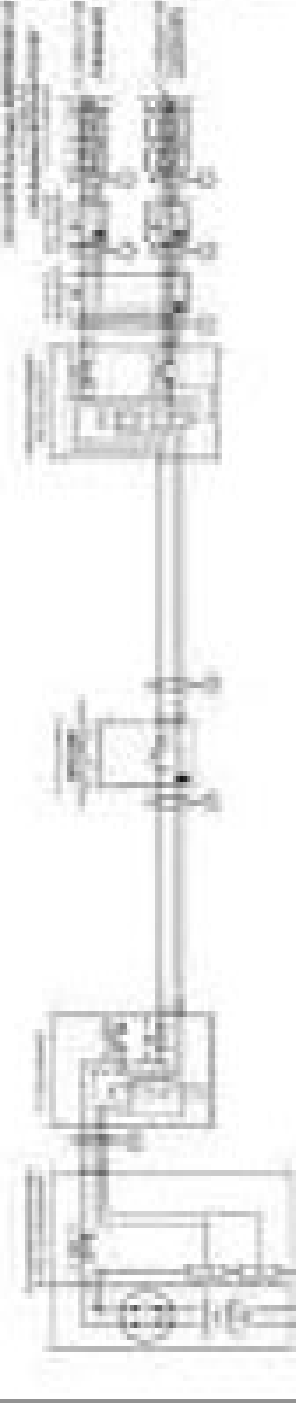
3. **APPROVED PROJECT REPORT**

4. **APPROVED PROJECT REPORT**




5. **APPROVED PROJECT REPORT**

6. **APPROVED PROJECT REPORT**



7. **APPROVED PROJECT REPORT**



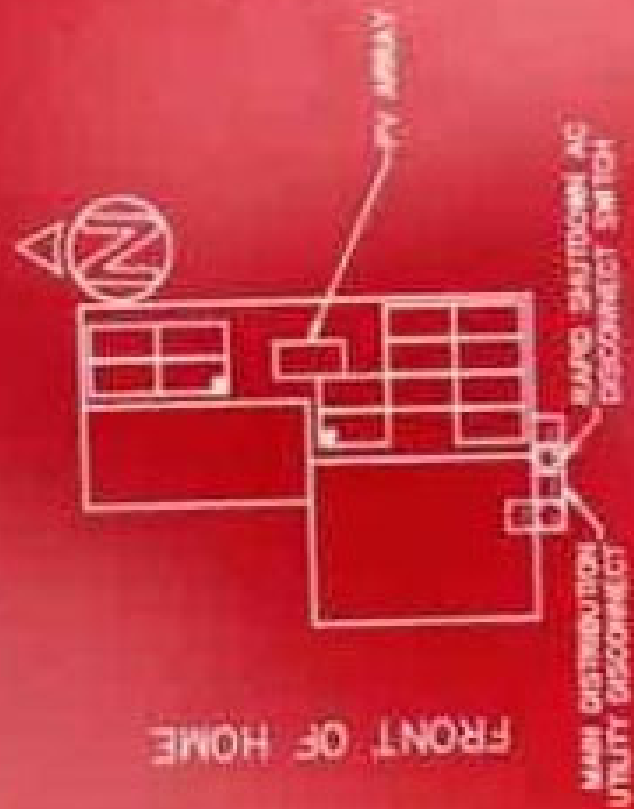
8. **APPROVED PROJECT REPORT**

Sl. No.	Name of the Candidate	Roll No.	Grade
1			
2			
3			
4			
5			
6			
7			
8			
9			
10			



CAUTION

MULTIPLE SOURCES OF POWER
POWER TO THIS BUILDING IS ALSO SUPPLIED FROM THE
FOLLOWING SOURCES WITH DISCONNECTS LOCATED AS SHOWN:



FRONT OF HOME

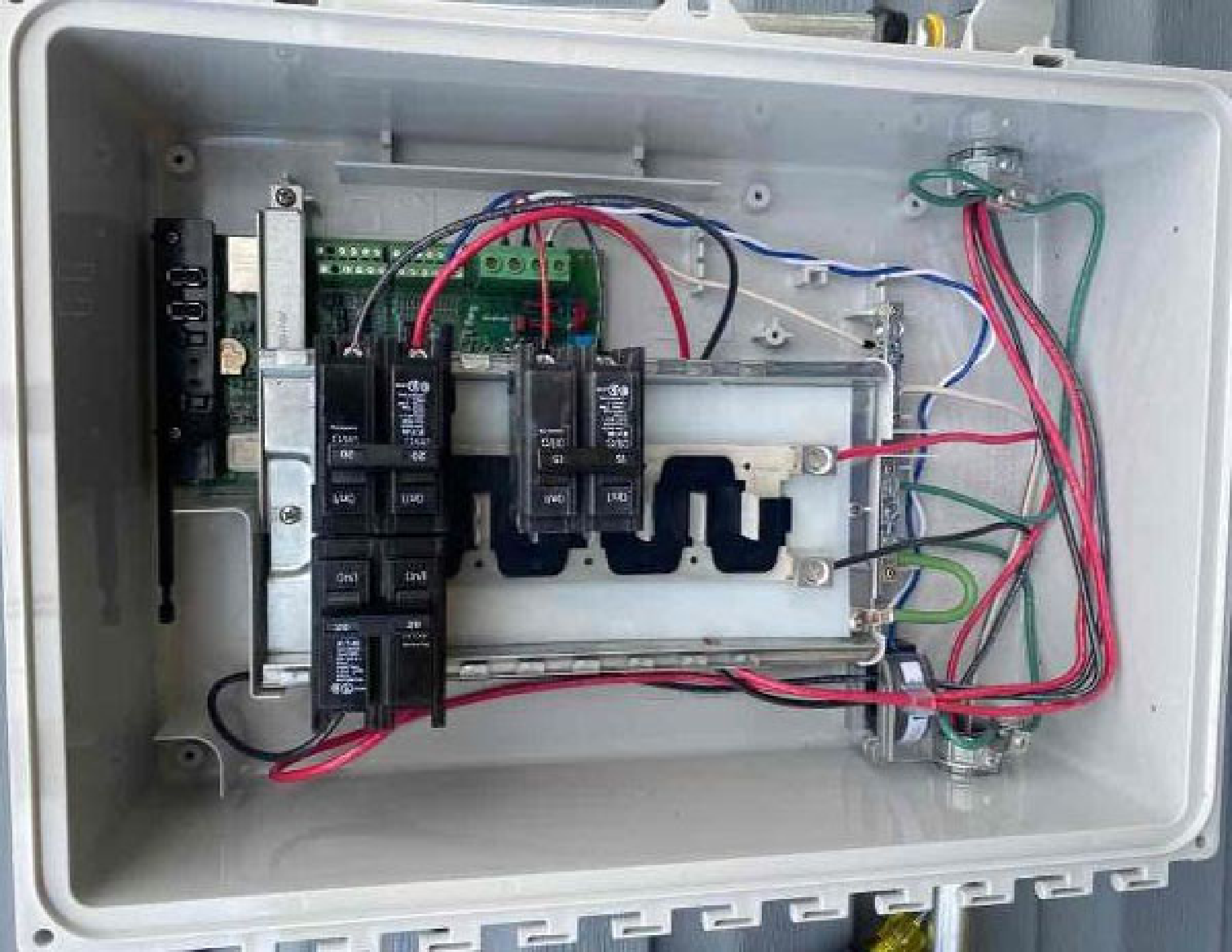
17 MARSH CT.
MADISON, ALABAMA 37115













Microinverters & Array

- ✓ Scanned : 14/14
- ✓ Array created : 1
- Ⓞ Array assigned : 0



Scan completed

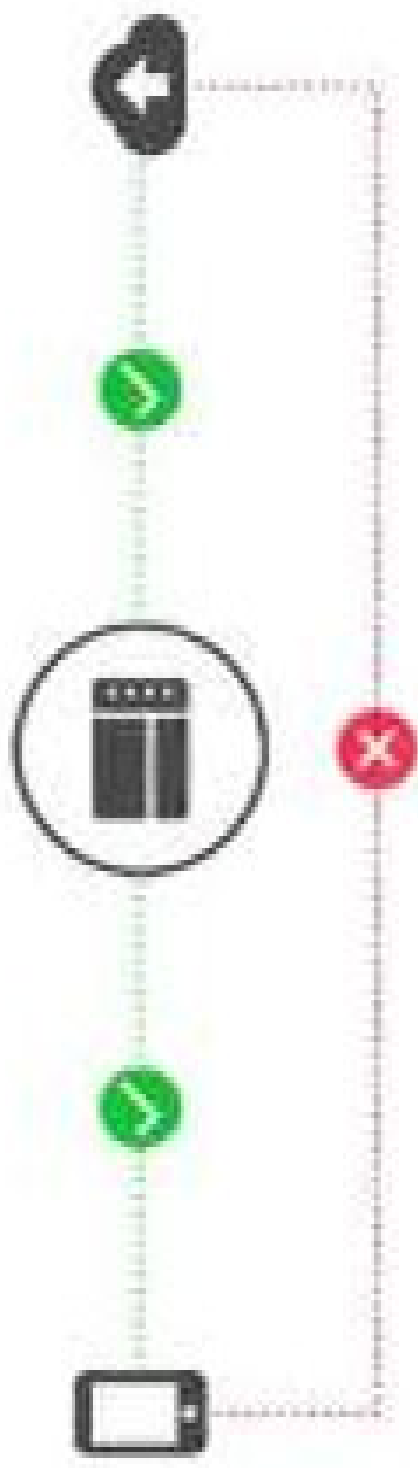
Microinverters : 14/14

AC Batteries : 0/0

DONE




Start Provisioning Devices

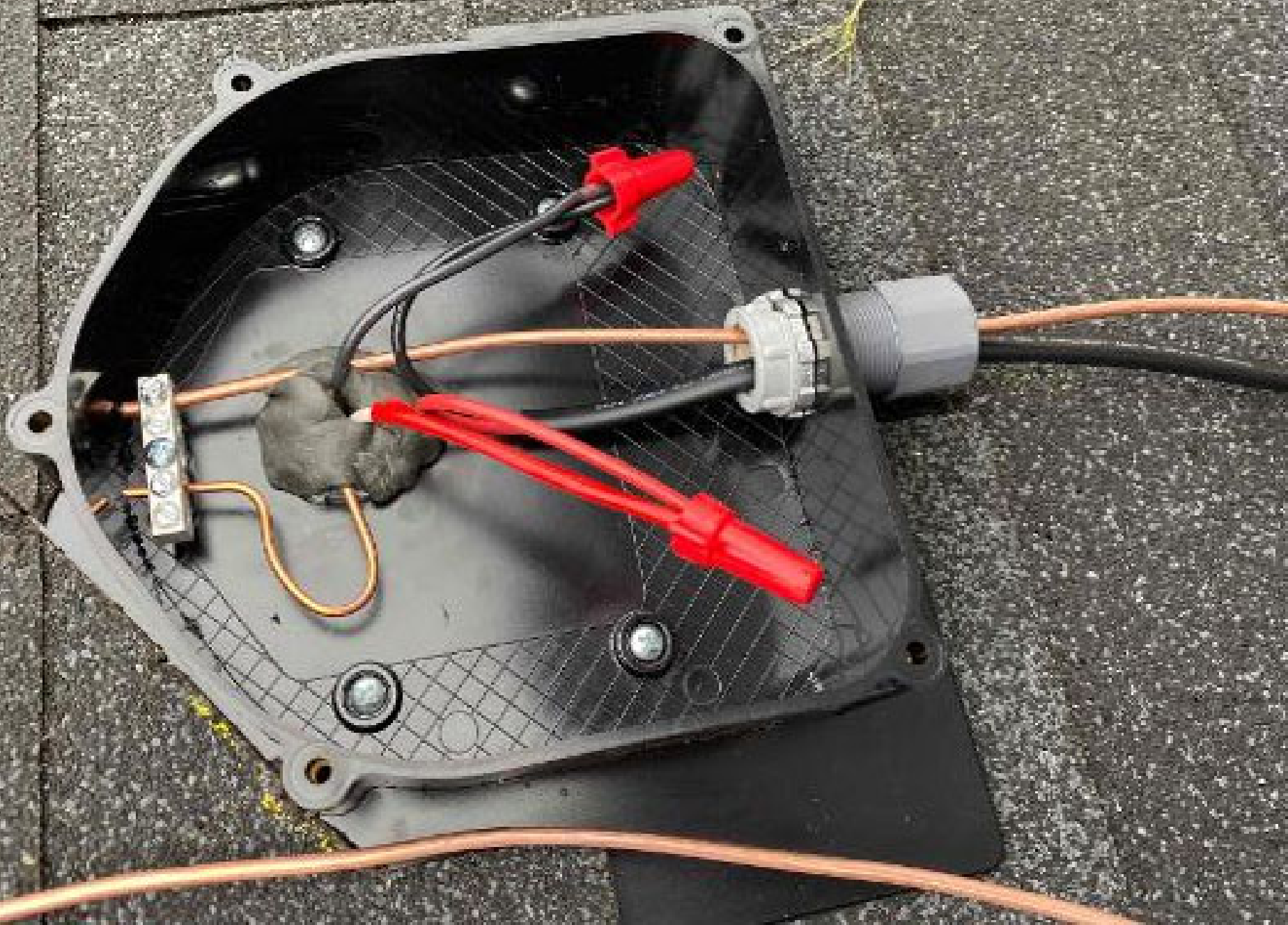
Envoy 202121056411



Envoy successfully connected to Enlighten and Installer Toolkit

Envoy Connectivity Status

	Wi-Fi 192.168.1.26	Connected >
	Ethernet	
	Cellular	







CAUTION



Polaris 3000
Polaris 3000
Polaris 3000

Polaris 3000
Polaris 3000
Polaris 3000
Polaris 3000



