

Pri



www.rstcenterprises.com

Photovoltaic Combiner/Enclosure Conforms to UL 1741; Certified to CSA C22.2 No. 290; Nema Type 3R

Q1  Q2  Q3  Q4  21  22  23  24  
 0799 Series  0799 E-Series  0766-41AD

Maximum Ratings: 1000 VDC/180 AMPS; 480 VAC/60 AMPS

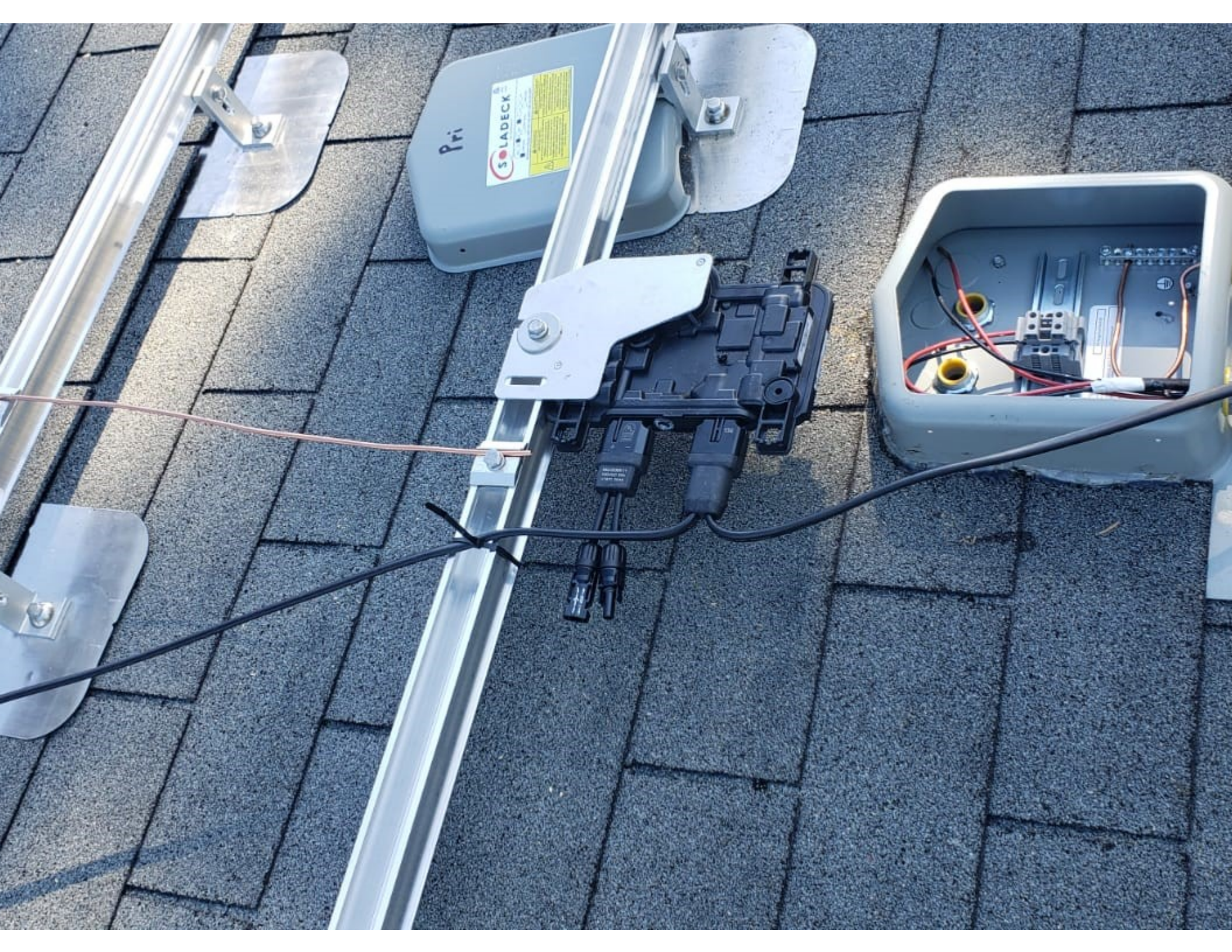
	<b>⚠ WARNING</b>	<b>⚠ AVERTISSEMENT</b>
	<p>HIGH VOLTAGE. KEEP OUT! RISK OF ELECTRICAL SHOCK. ONLY TRAINED SERVICE PERSONNEL ALLOW ACCESS. SUITABLE FOR PHOTOVOLTAIC USE. APPROVED FOR USE WITH FIELD-INSTALLED CONDUCTORS SIZED FOR AN ALLOWABLE AMPACITY OF 55 AT 90 C°. AN EXTERNAL OUTPUT CIRCUIT DISCONNECTING MEANS SHALL BE PROVIDED WHEN REQUIRED BY THE CANADIAN ELECTRICAL CODE, PART I. WARNING: MORE THAN ONE LIVE CIRCUIT. SEE DIAGRAM.</p>	<p>HAUTE TENSION. GARDER HORS! RISQUE DE CHOC ELECTRIQUE. SEUL LE PERSONNEL DE MAINTENANCE QUALIFIE EST ACCESAUTORISE. POUR USAGE PHOTOVOLTAIQUE. APPROUVE POUR UTILISATION AVEC DES CONDUCTEURS INSTALLES SUR PLACE DE GROSSEUR CONVENANT A UN COURANT ADMISSIBLE DE 55 AT 90C°. DISPOSITIF DE SECTIONNEMENT DU CIRCUIT DE SORTIE EXTERNE OBLIGATOIRE SI EXIGE PAR LE CODE CANADIEN DE L'ELECTRICITE, PREMIERE PARTIE. AVERTISSEME PLUSIEURS CIRCUITS SOUS TENSION. VOISIEU SCHEMA.</p>

RSTC. Enterprises  
Patent No. US 7,626,718 B1







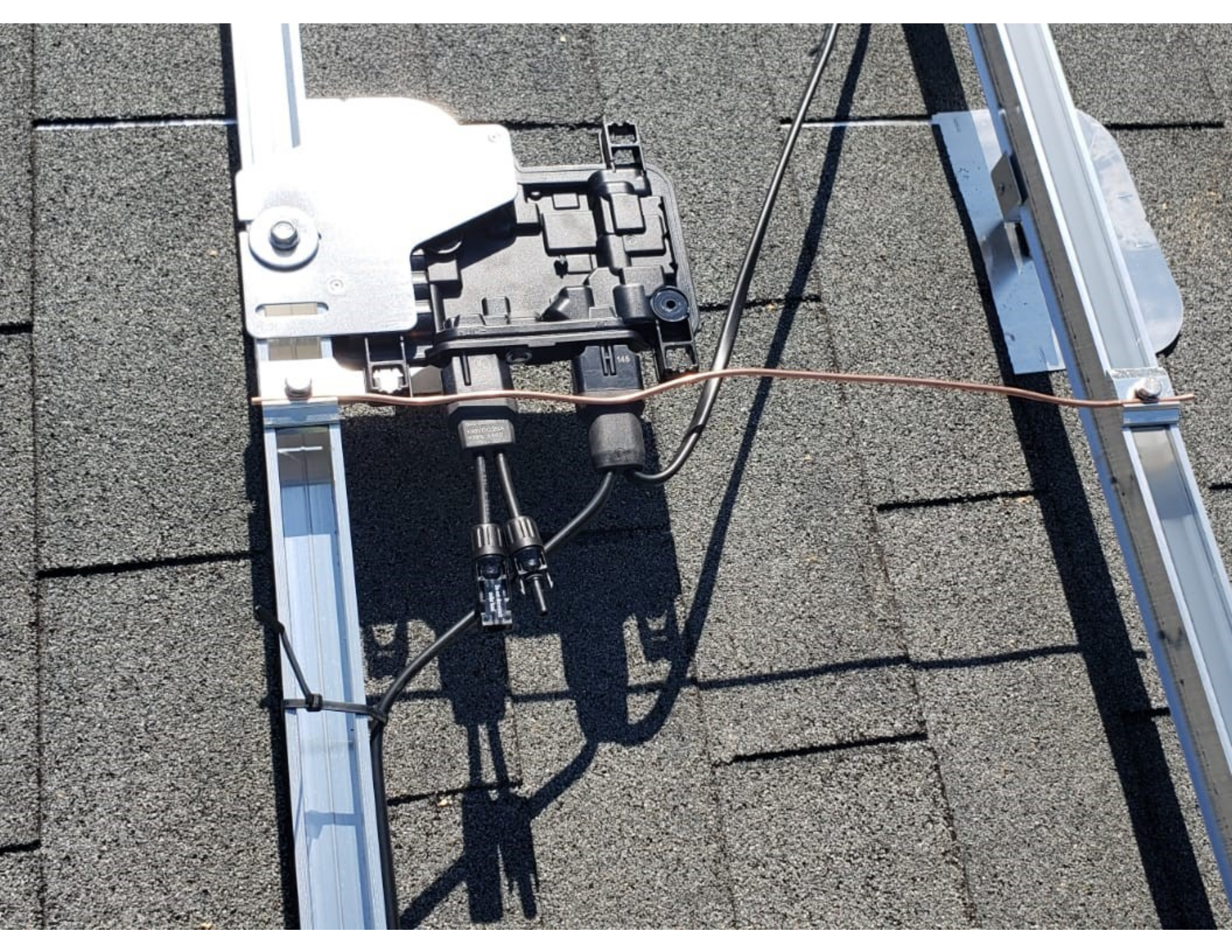


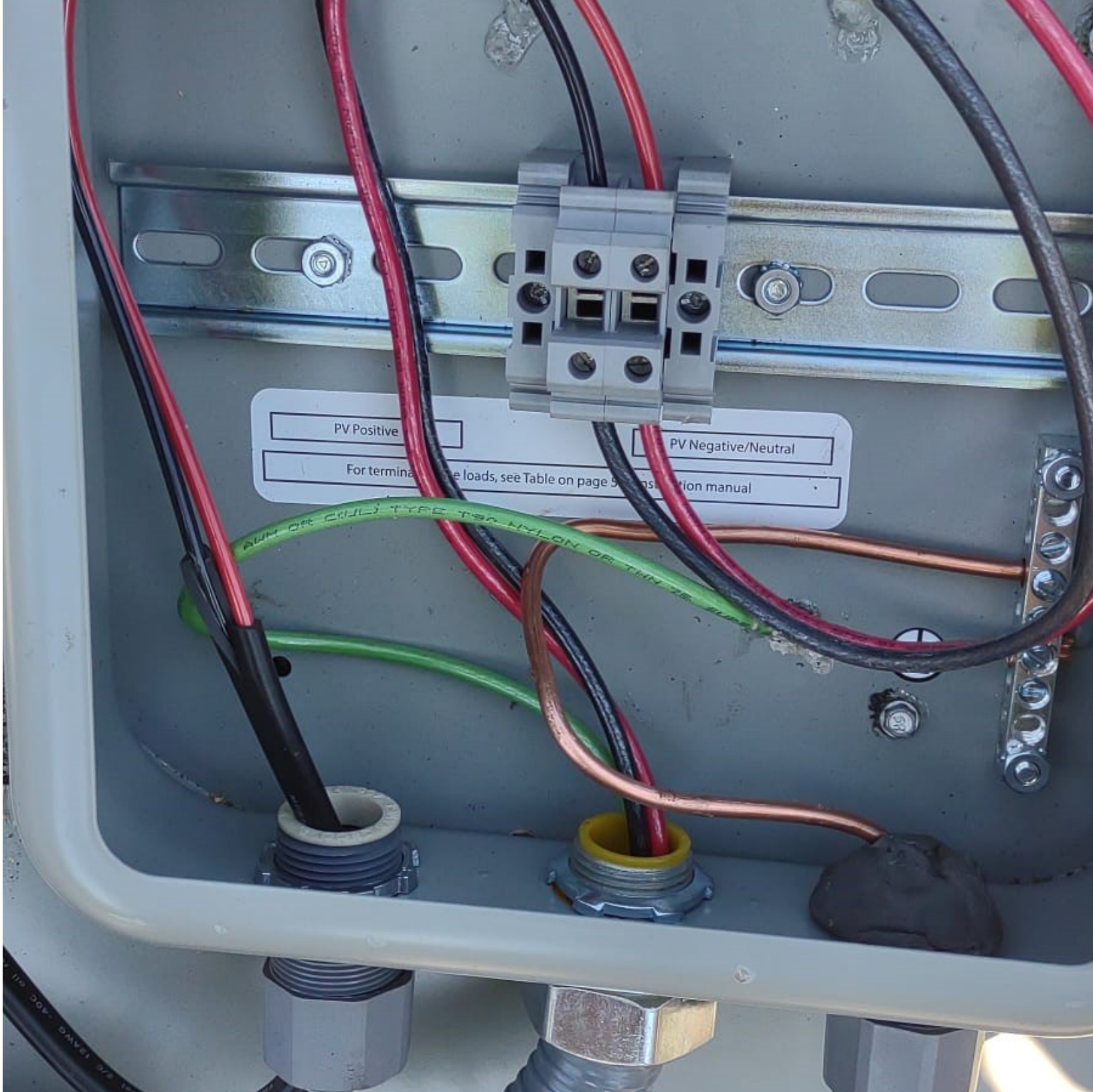
Pri  
SOLADECK











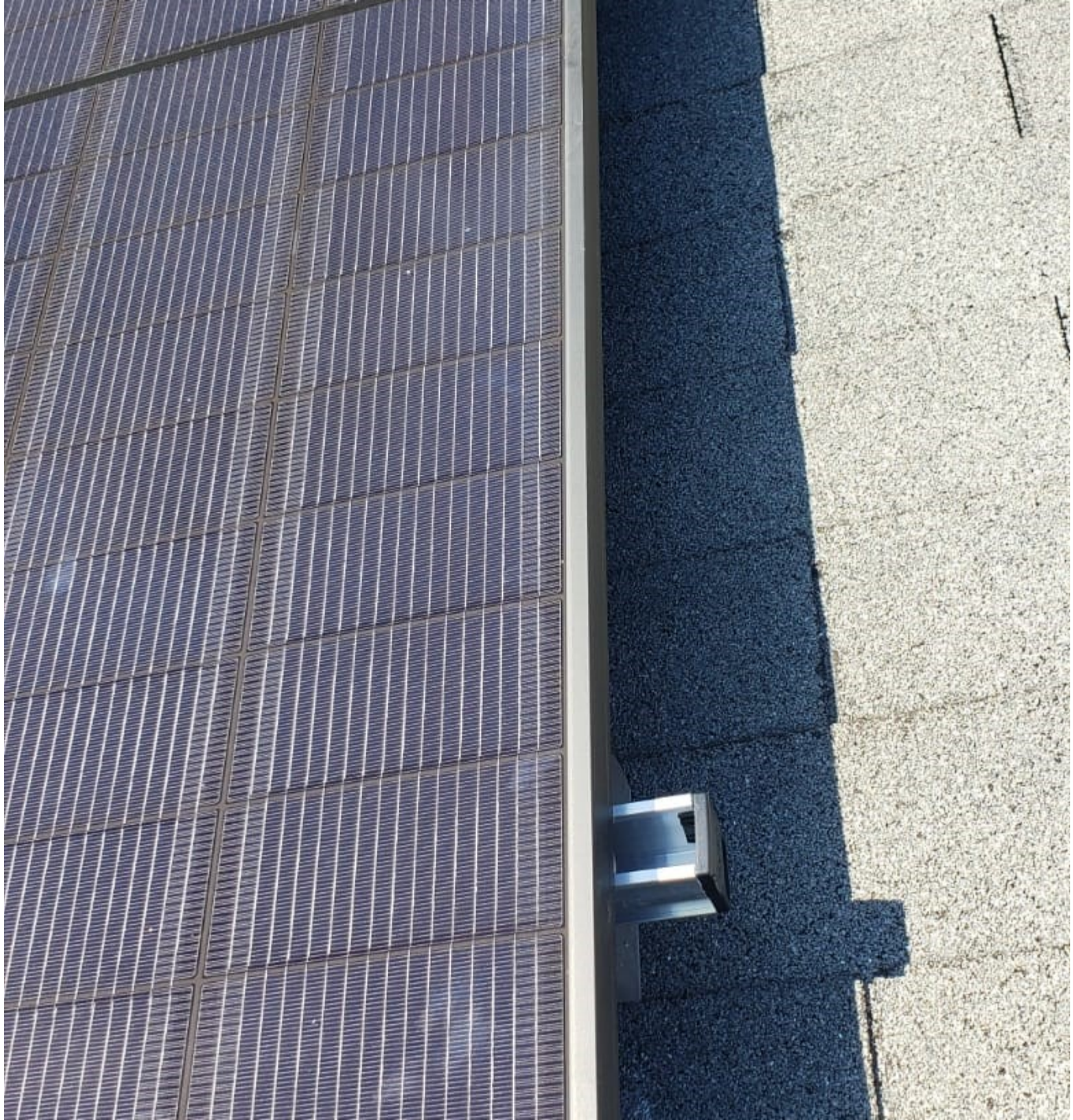
PV Positive

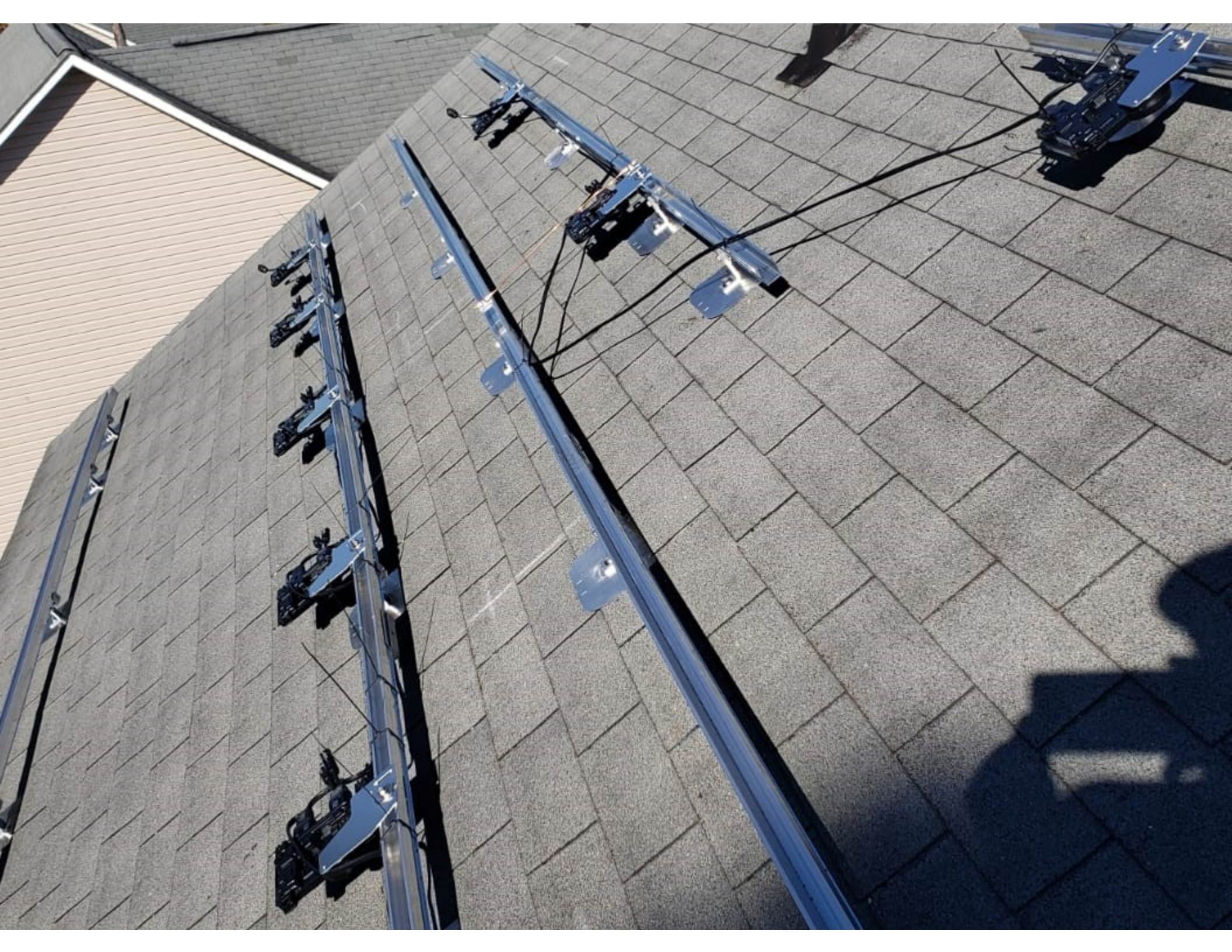
PV Negative/Neutral

For termination loads, see Table on page 5 of installation manual

ALUM OR COPPER TYPE T90 NYLON OR TERN T90 TUB









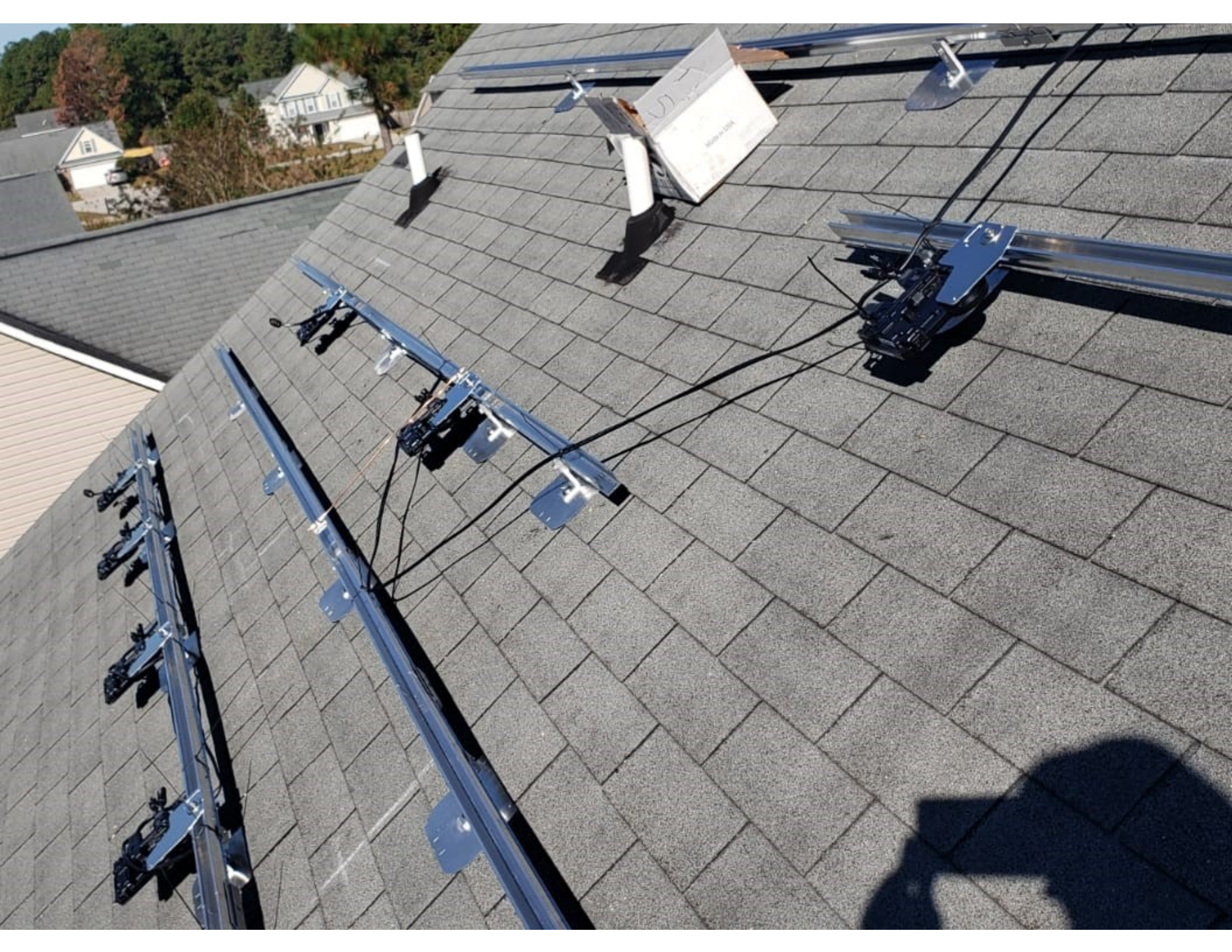
WE'RE SAVING  
**MONEY**  
WITH  
 **SIGORA  
SOLAR™**

U.S. MAIL  
1873







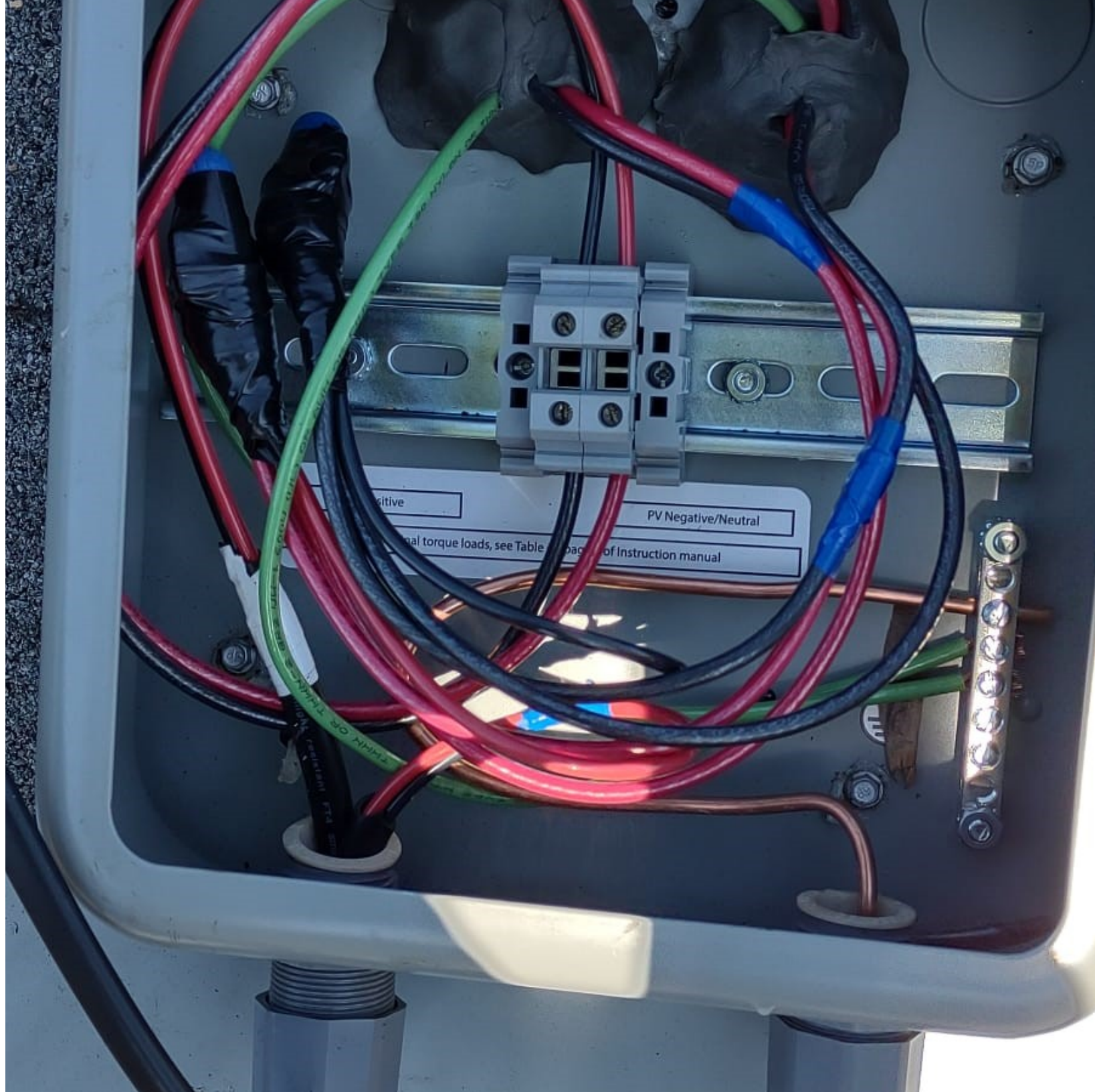












Positive

PV Negative/Neutral

Maximum torque loads, see Table of Instruction manual

Pri

**SOLADECK**  
www.hitecenergys.com

Photovoltaic Combiner/Enclosure Conforms to UL 1741, Certified to CSA C22.2 No. 250, Nema Type 3B

Q1  Q2  Q3  Q4     21  22  23  24

0799 Series     0795 E-Series     0766-41AD

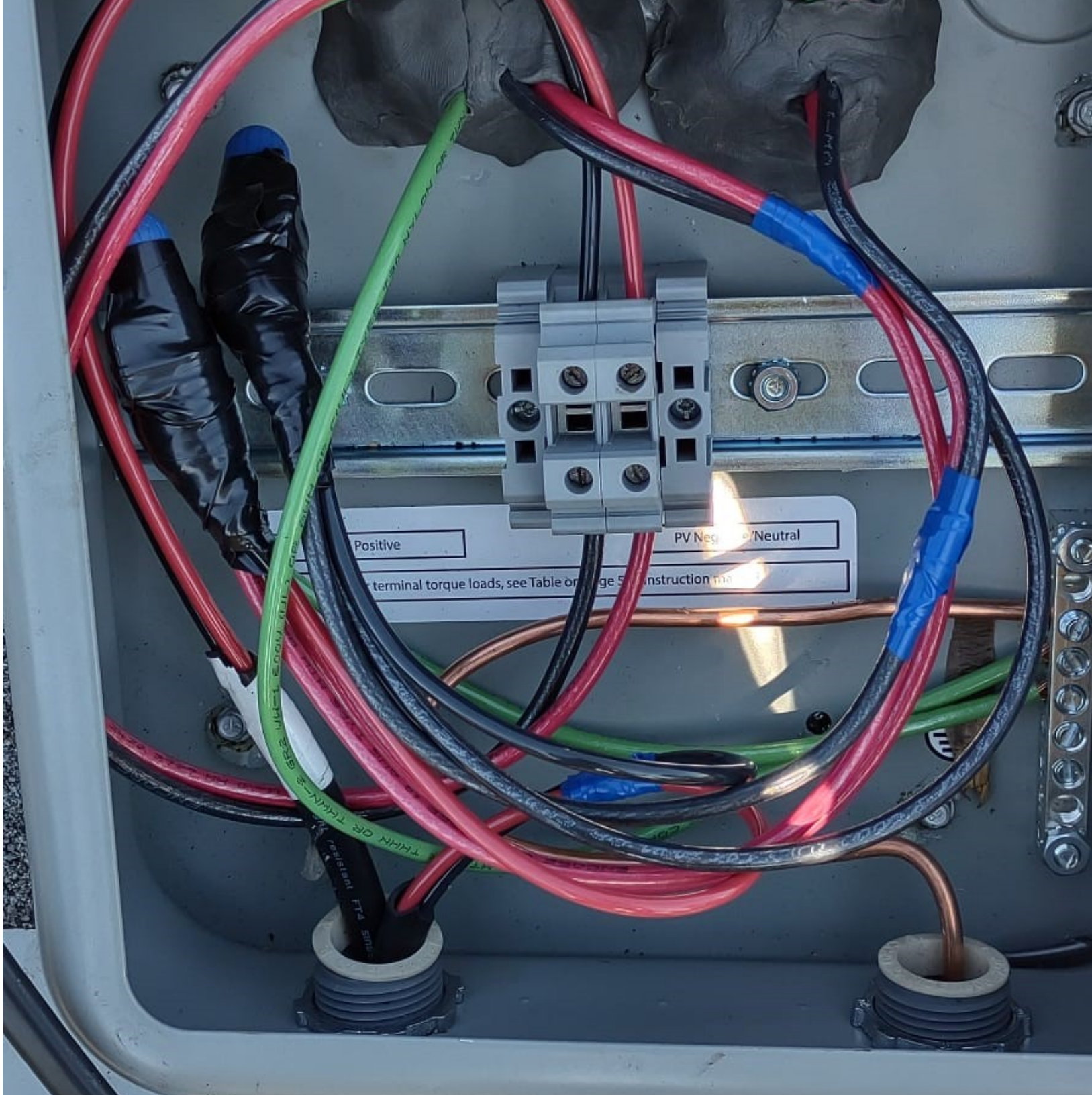
Maximum Ratings: 1000 VDC/180 AMPS; 480 VAC/60 AMPS

⚠ WARNING	⚠ AVERTISSEMENT
<p>HIGH VOLTAGE, KEEP OUT! RISK OF ELECTRICAL SHOCK. ONLY TRAINED SERVICE PERSONNEL ALLOW ACCESS. SUITABLE FOR PHOTOVOLTAIC LINE. APPROVED FOR USE WITH RE-INSTALLED CONDUCTORS SIZES FOR AN ALLOWABLE AMPACITY OF 35 AT 90 °C. AN EXTERNAL OUTPUT CIRCUIT DISCONNECTING MEANS SHALL BE PROVIDED WHEN REQUIRED BY THE CANADIAN ELECTRICAL CODE, PART I. WARNING: MORE THAN ONE LIVE CIRCUIT. SEE DIAGRAM.</p>	<p>HAUTE TENSION, GARDER HORS RISQUE DE CHOC ELECTRIQUE. SEUL LE PERSONNEL DE MAINTENANCE QUALIFIE EST ACCESSIBILISE. POUR USAGE PHOTOVOLTAIQUE. APPROUVE POUR UTILISATION AVEC DES CONDUCTEURS INSTALLES SUR PLACE DE GROSSEUR CONVENANT A UN COURANT ADMISSIBLE DE 35 A7 90°C. DISPONITEF DE RECTONNEMENT DU CIRCUIT DE SORTIE EXTERNE DELAGATION SI EXIGE PAR LE CODE CANADIEN DE L'ELECTRICITE. PRENDRE PRATTE AVERTISSEMENT PLUMBERS CIRCUITS BOND TENDRE. VOIR LE SCHEMA.</p>

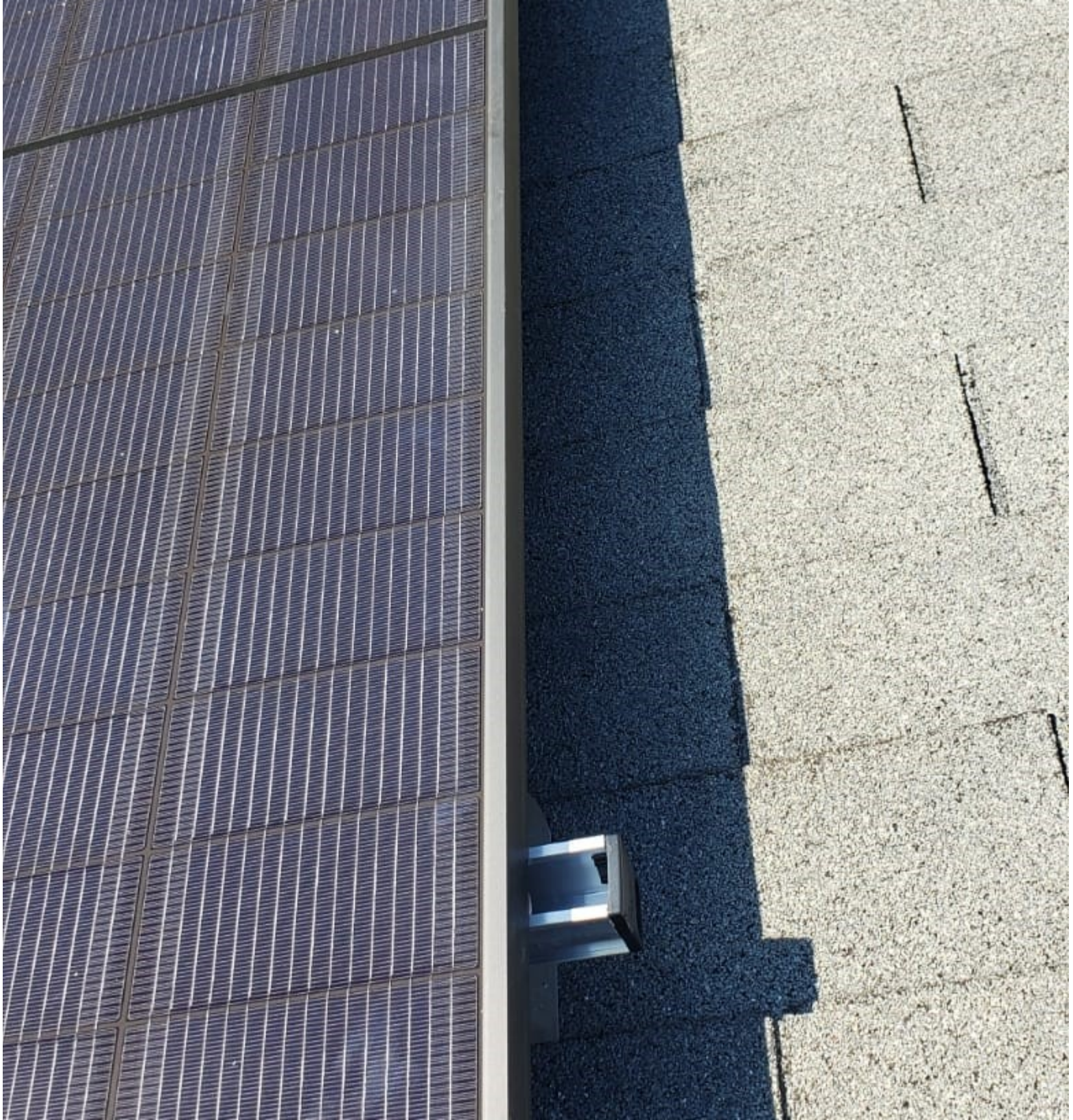


CHRISTIE ENTERPRISES  
Patent No. US 7,426,913









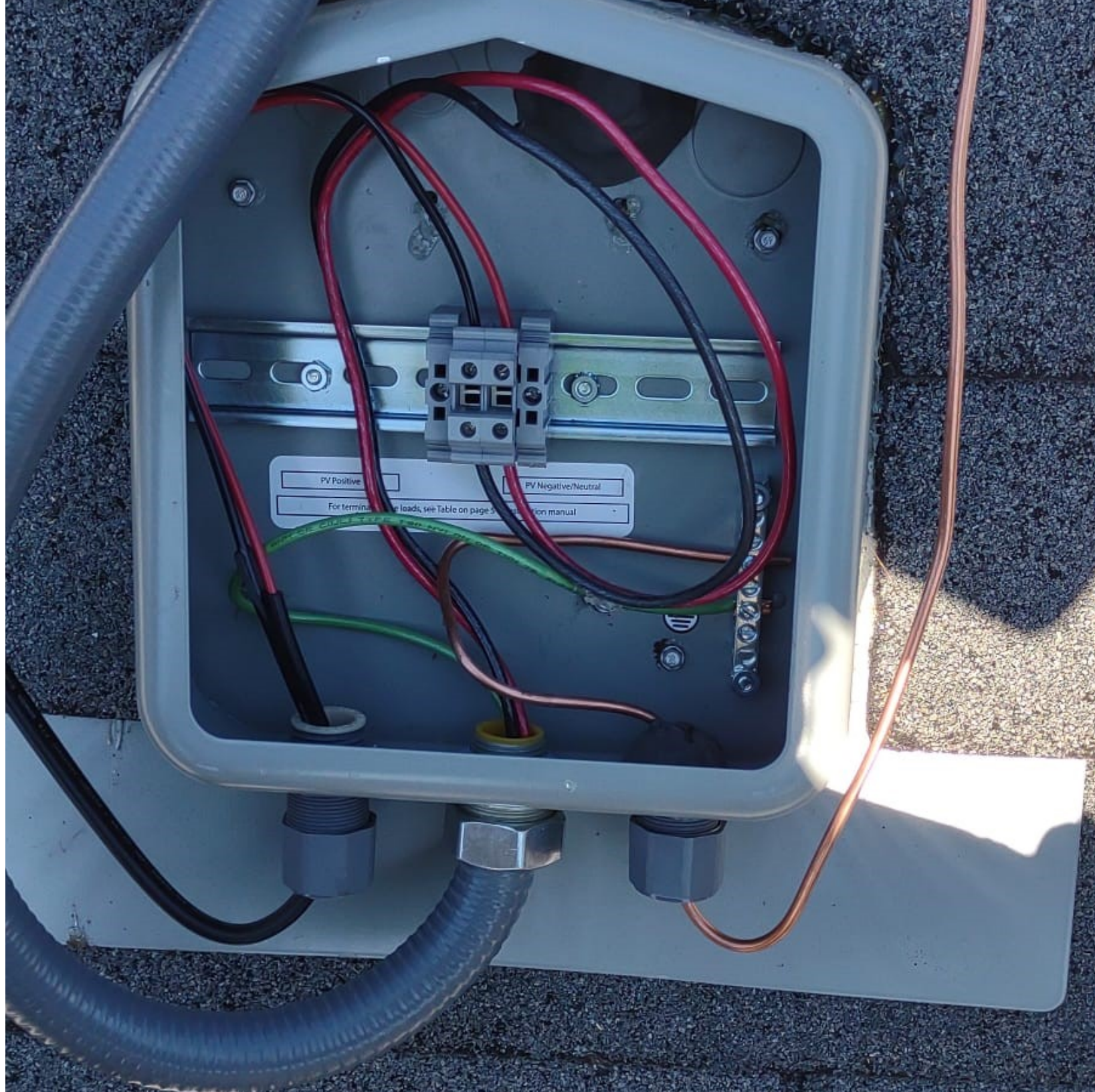












PV Positive      PV Negative/Neutral  
For terminal load limits, see Table on page 5 of the installation manual





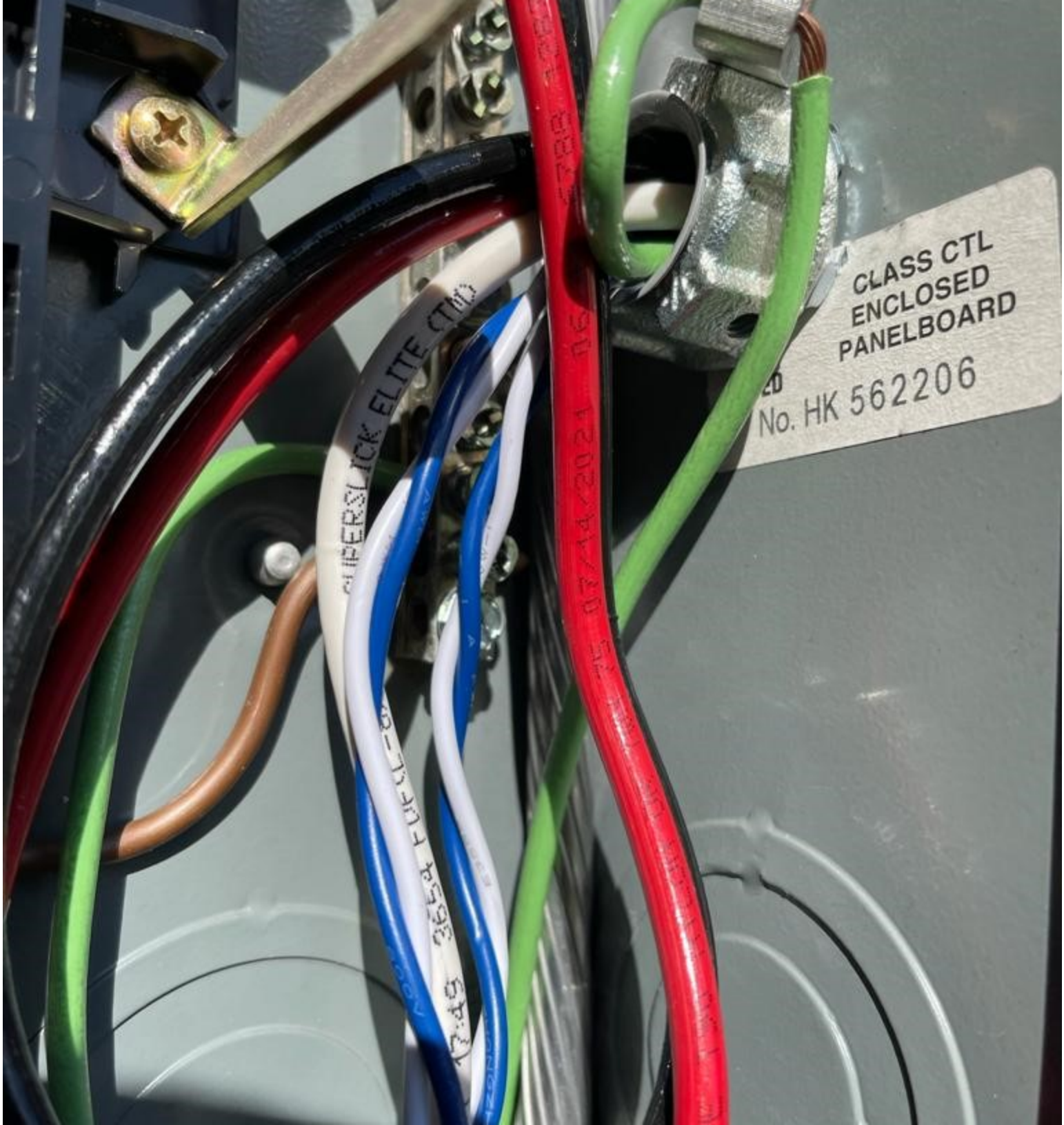












CLASS CTL  
ENCLOSED  
PANELBOARD  
No. HK 562206

SUPERSLICK ELITE CTMD

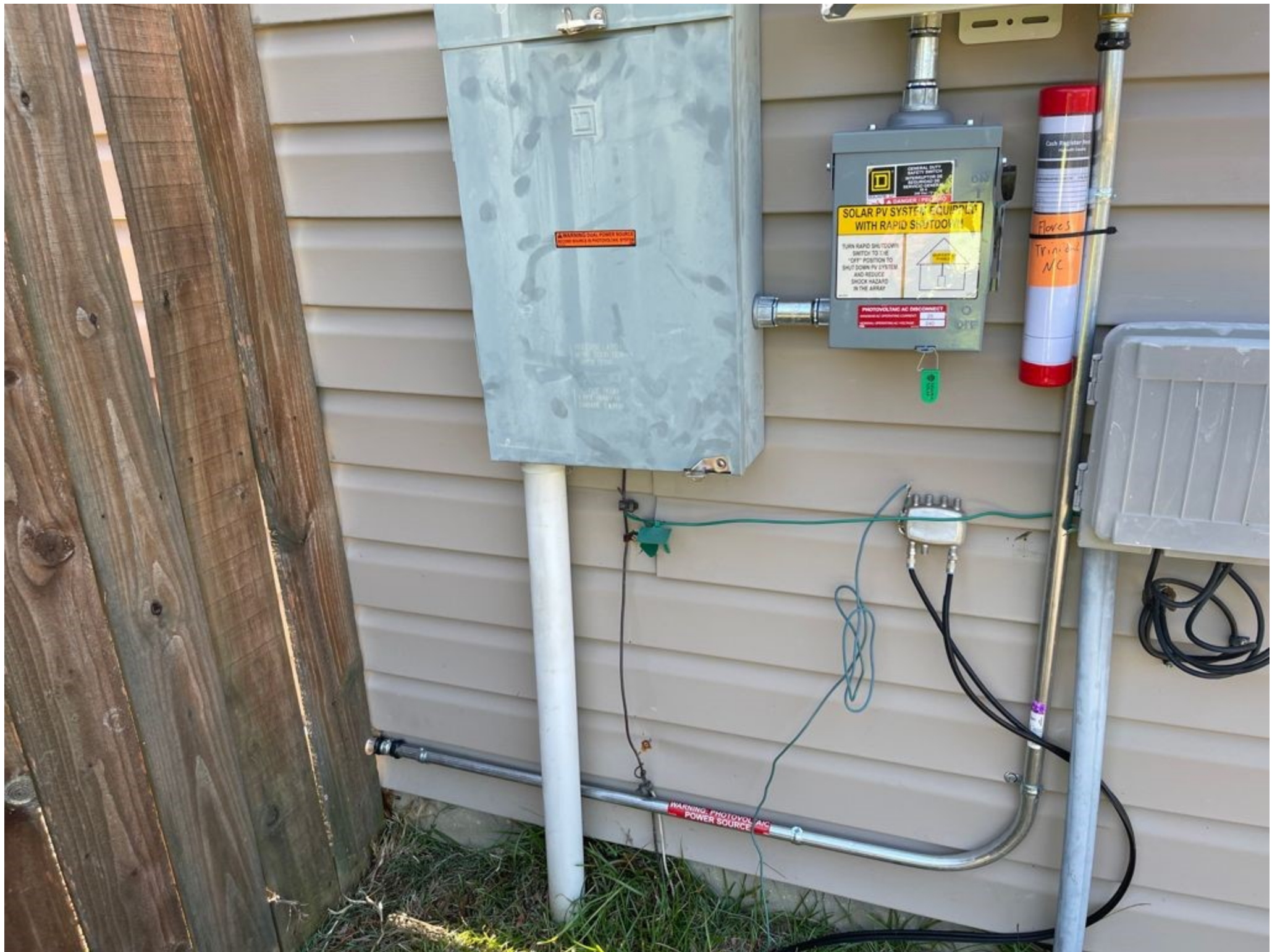
07/14/2021 16

17.49 26534 TURTLE-8









WARNING: DANGEROUS POWER SOURCE



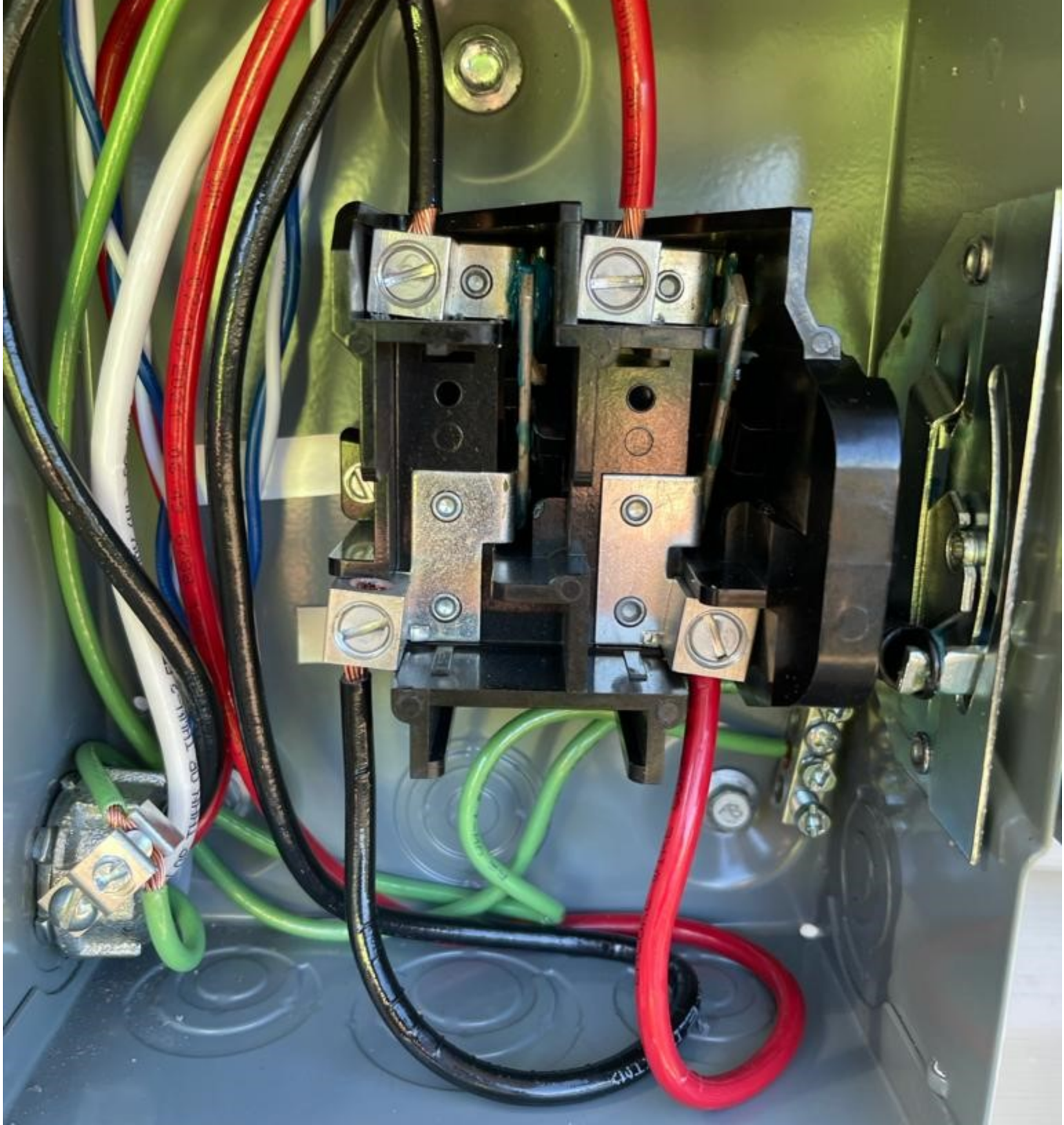
SOLAR PV SYSTEM EQUIPPED WITH RAPID SHUTDOWN

TURN RAPID SHUTDOWN SWITCH TO THE 'OFF' POSITION TO SHUT DOWN PV SYSTEM AND REDUCE SHOCK HAZARD IN THE ARRAY

PHOTOVOLTAIC AC DISCONNECT

Flows Trineco NC

WARNING: PHOTOVOLTAIC AC POWER SOURCE





# ⚠ DANGER/PELIGRO

## HAZARD OF ELECTRIC SHOCK, EXPLOSION, OR ARC FLASH

- Apply appropriate personal protective equipment (PPE) for electrical work practices. See NFPA 70E.
- Turn off and lockout the electrical supply switch before working on or inside switch.
- Use a properly rated voltage sensing device at all line and load fuse terminals and latch door before turning power on and operating switch.
- If class J or class R fuses are used, this switch will become a fire and explosion hazard if installed on circuits capable of delivering more than 100,000 symmetrical amperes.
- Use renewable link fuses in fused switches.

**Failure to follow these instructions will result in death or serious injury.**

## PELIGRO DE DESCARGA ELÉCTRICA, EXPLOSIÓN O DESTELLO DE ARQUEO

- Utilice equipo de protección personal (EPP) apropiado y siga las prácticas de seguridad eléctrica establecidas por su Compañía (consulte la norma NFPA 70E).
- Desenergice el interruptor antes de realizar cualquier trabajo dentro o fuera de él.
- Siempre utilice un dispositivo detector de tensión nominal adecuado en los terminales de los lados de carga y línea para confirmar la desenergización del interruptor.
- Vuelva a instalar todas las piezas y ponga seguro a la puerta antes de energizar y hacer funcionar el desconectador.
- Si no se utilizan fusibles clase J o R, este interruptor podrá causar incendios y lesiones personales serias en caso de ser instalado en circuitos capaces de suministrar más de 10,000 A simétricos rcm.
- No utilice fusibles de cinta renovables en los interruptores de fusible.

**El incumplimiento de estas precauciones podrá causar la muerte o lesiones serias.**

**SAFETY SWITCH**  
SERIES E1  
CATALOG NO. DU222RB  
TYPE 3R ENCLOSURE  
RAINPROOF  
AMPS: 60  
SINGLE THROW NOT FUSIBLE  
FREQUENCY: 60 Hz



VOLTS: 240 Vac 1 PHASE  
H.P. RATING: STD. 10, MAX. 10

LUG TORQUE REQUIREMENTS	
WIRE SIZE	TORQUE (IN LBS)
#14 - #6	20
#6 - #4	40
#3	45

LUGS SUITABLE FOR 60°C OR 75°C COPPER OR ALUMINUM CONDUCTORS

## LEA ESTAS INSTRUCCIONES ANTES DE INSTALAR EL EQUIPO

### INTERRUPTOR DE SEGURIDAD

NO. DE CATALOGO DU222RB SERIE E1  
GABINETE TIPO 3R  
A PRUEBA DE LLUVIA  
A: 60  
UN TIRO, SIN PORTAFUSIBLES  
FRECUENCIA: 60 Hz



TENSION: 240 V- 1FASE  
CABALLO DE FUERZA (HP): EST. 10, MAX. 10

REQUISITOS DE PAR DE APRIETE DE LAS ZAPATAS	
CALIBRE DEL CABLE	PAR DE APRIETE EN LBS-PULO
#14 - #6	20
#6 - #4	40
#3	45

ZAPATAS ADECUADAS PARA CONDUCTORES DE COBRE O DE ALUMINIO A UNA TEMPERATURA DE 60°C O 75°C

2108

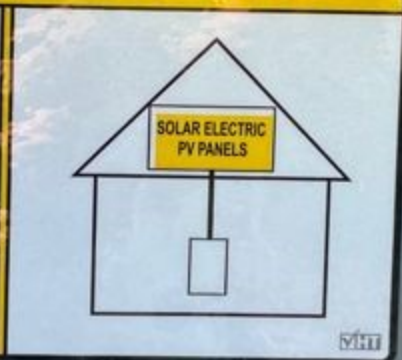


 **GENERAL DUTY SAFETY SWITCH**  
INTERRUPTOR DE SEGURIDAD DE SERVICIO GENERAL  
60 A  
240 Vac / V-

**⚠ DANGER / PELIGRO**

**SOLAR PV SYSTEM EQUIPPED WITH RAPID SHUTDOWN**

TURN RAPID SHUTDOWN SWITCH TO THE "OFF" POSITION TO SHUT DOWN PV SYSTEM AND REDUCE SHOCK HAZARD IN THE ARRAY



**PHOTOVOLTAIC AC DISCONNECT**

MAXIMUM AC OPERATING CURRENT:	25
NOMINAL OPERATING AC VOLTAGE:	240

Cash Register  
Harrett Cove

HINKAPIN OAK CIR

RESIDENTIAL

Flaves

Trinidad NC



