



Hale, Rick, 20 Dot CourtFuquay-Varina, NC 27526- PV Inspection Pictures



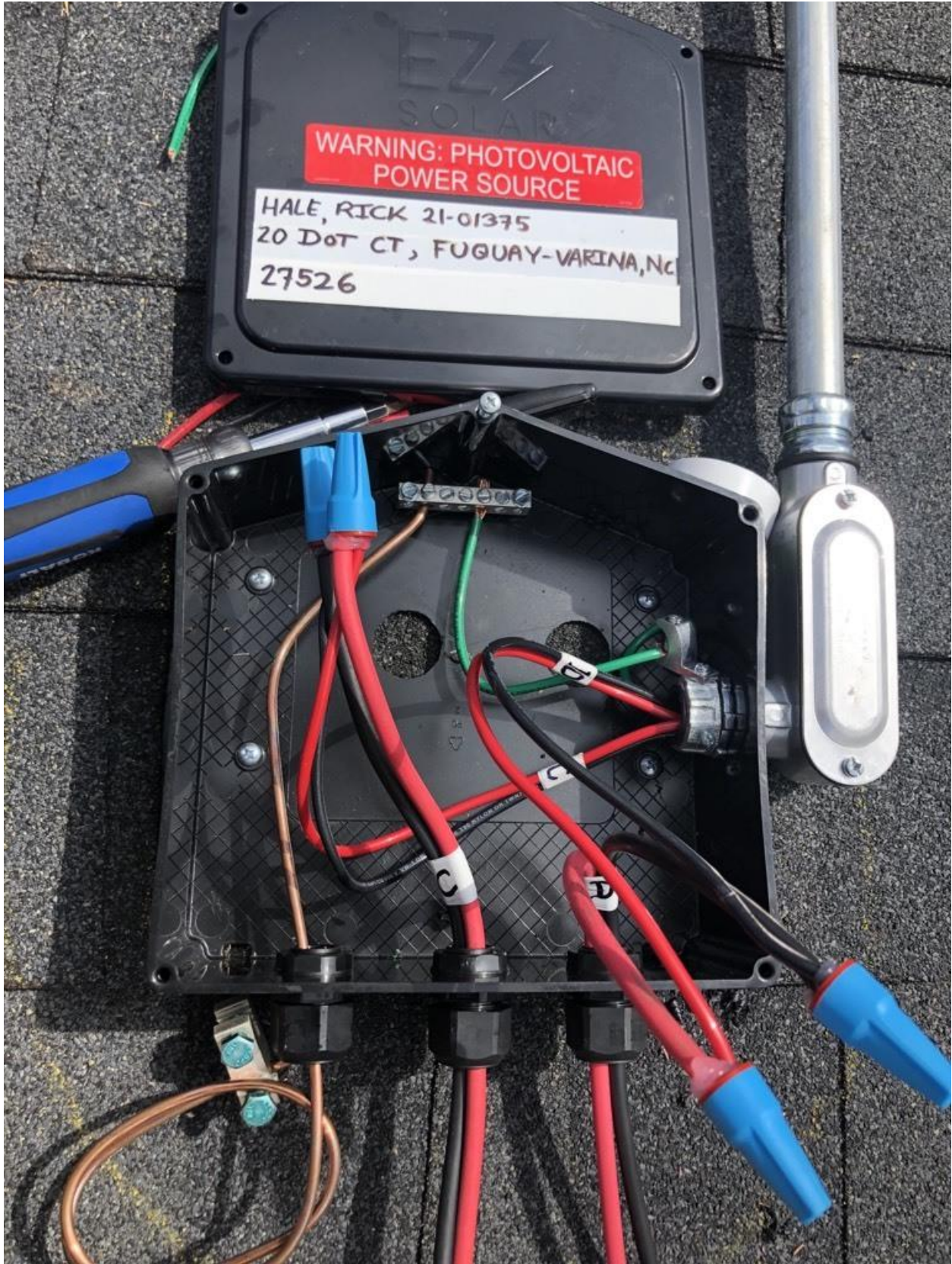


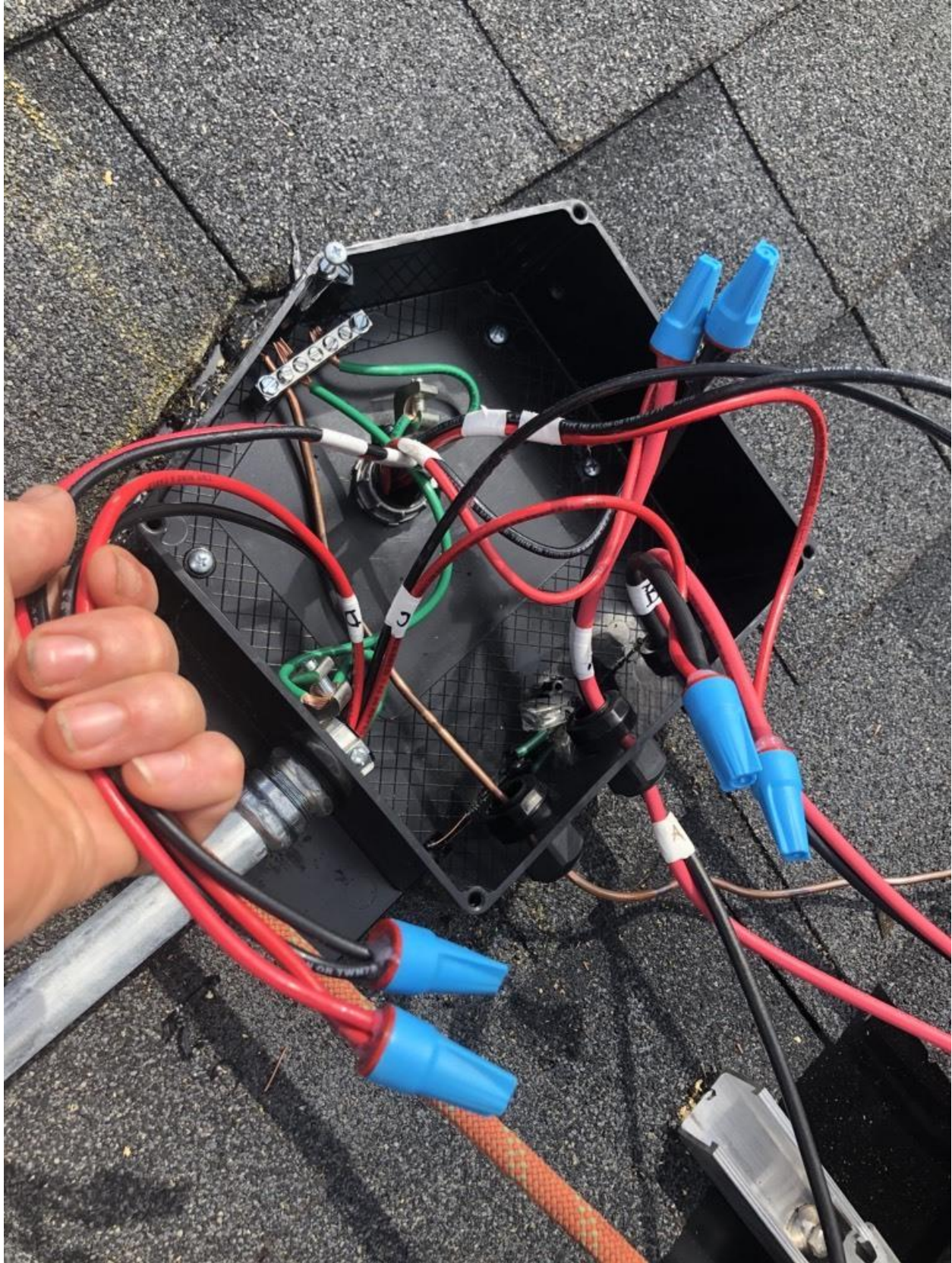


Hale, Rick, 20 Dot CourtFuquay-Varina, NC 27526- PV Inspection Pictures









Hale, Rick, 20 Dot CourtFuquay-Varina, NC 27526- PV Inspection Pictures



Hale, Rick, 20 Dot CourtFuquay-Varina, NC 27526- PV Inspection Pictures



Hale, Rick, 20 Dot CourtFuquay-Varina, NC 27526- PV Inspection Pictures



Hale, Rick, 20 Dot CourtFuquay-Varina, NC 27526- PV Inspection Pictures



ENGINEERED, DESIGNED AND QUALITY TESTED BY Q CELLS

Q.PEAK DUO BLK ML-G9+ 380

PERFORMANCE AT STANDARD TEST CONDITIONS*

Nominal Power* (±5W/-0W)	P_{nom}	[W]	380
Short circuit current*	I_{sc}	[A]	10.50
Open circuit voltage*	V_{oc}	[V]	45.04
Current at maximum power	I_{mp}	[A]	10.04
Voltage at maximum power	V_{mp}	[V]	37.85
Maximum system voltage	V_{sys}	[V]	1000(IEC) 1000(UL)
Weight	M	[kg / lbs]	19.5 / 43.0

*Measurement tolerances: P_{nom} ±3%; I_{sc} , V_{oc} ±5% at STC; 1000W/m²; 25 ± 2 °C.
AM 1.5 according to IEC 60904-3. Data given are rated (nominal) values.






Serial No. 825321117801700246


Hanwha Solartech Corporation, 1329 Daegun-ro, Gwangju-si, Jeonnam-do, 505-700, Korea, Republic of
 Busan-si, Chungcheong-do, Republic of Korea, 27832
Q CELLS is a brand of Hanwha Solartech Corporation

Q CELLS
 Made in Korea




! DANGER!
 Risk of electric shock!
 DO NOT connect or disconnect plug contacts while system is under load current. Refer to the Installation and Operation Manual before installing, operating or servicing this unit.

DANGER!
 Risque de choc électrique!
 NE PAS connecter ou déconnecter les connecteurs lorsque le système est en charge. Consultez le manuel d'installation et d'utilisation avant installation, utilisation et entretien du produit.

Fire Rating: Class C / Type 2
 Design load: 55 lbs./ft²
 Fuse Rating: 20A
 For field connections, use minimum No.12 AWG copper wires insulated for a minimum of 90 °C
 U.S. Patent No. 9,393,215 (solar cells)

EMAIL: service@q-cells.com
 WEB: www.q-cells.com



Hale, Rick, 20 Dot CourtFuquay-Varina, NC 27526- PV Inspection Pictures



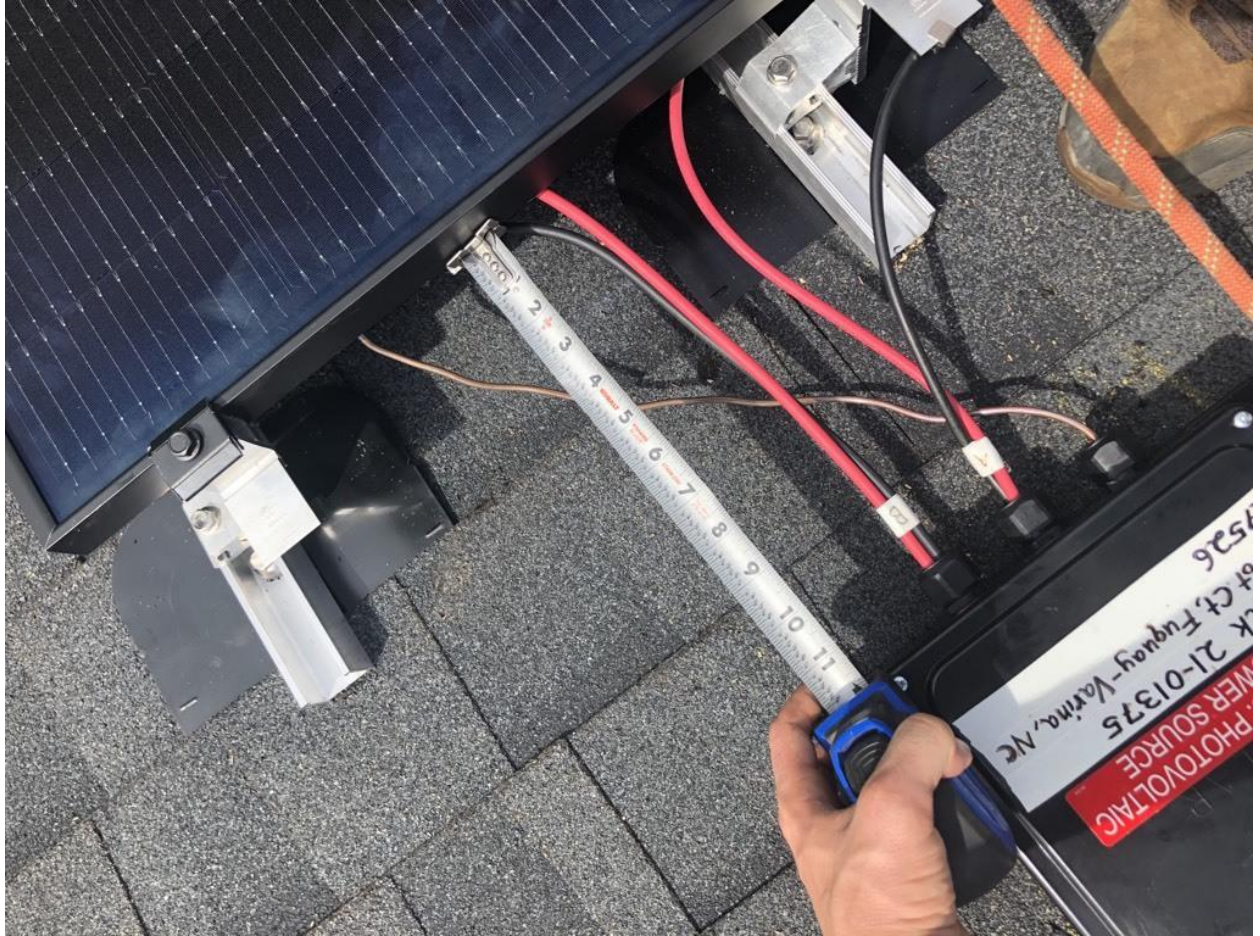
Hale, Rick, 20 Dot CourtFuquay-Varina, NC 27526- PV Inspection Pictures



Hale, Rick, 20 Dot CourtFuquay-Varina, NC 27526- PV Inspection Pictures







Hale, Rick, 20 Dot CourtFuquay-Varina, NC 27526- PV Inspection Pictures



Hale, Rick, 20 Dot CourtFuquay-Varina, NC 27526- PV Inspection Pictures





