

UL LISTED  
CLASS C/F1 ENCLOSED PANELBOARD  
NO. [blacked out]  
E-T-N 30-5144

15 E-T-N TYPE B COMBINATION AFCI TEST	20 E-T-N TYPE B COMBINATION AFCI TEST
15 E-T-N TYPE B COMBINATION AFCI TEST	20 OFF/O E-T-N TYPE B COMBINATION AFCI TEST
15 E-T-N TYPE B COMBINATION AFCI TEST	20 OFF/O E-T-N TYPE B COMBINATION AFCI TEST
15 OFF/O E-T-N TYPE B COMBINATION AFCI TEST	20 OFF/O E-T-N TYPE B COMBINATION AFCI TEST
15 OFF/O E-T-N TYPE B COMBINATION AFCI TEST	20 OFF/O E-T-N TYPE B COMBINATION AFCI TEST
15 OFF/O E-T-N TYPE B COMBINATION AFCI TEST	20 OFF/O E-T-N TYPE B COMBINATION AFCI TEST

Nook / Kitchen

Kitchen GFI

Washer

Handyman

Path Recs

RM

Family

Garage

Master

E-T-N  
TYPE B  
COMBINATION  
AFCI  
TEST

SOLAR

SOLAR



⚠ WARNING: DUAL POWER SOURCE  
AC POWER SOURCE & PHOTOVOLTAIC SYSTEM





Panel No.	Panel Description	Panel Location	Panel Type	Panel Voltage	Panel Amps	Panel Breakers	Panel Notes
1	Master & Smokes	Master Bedroom	20A	120V	20A	20A	
2	Family Room	Family Room	20A	120V	20A	20A	
3	Bed + 3 Hall Breakers	Bedroom	20A	120V	20A	20A	
4	Garage Foyer, Kitchen + Break	Garage	20A	120V	20A	20A	
5	Garage Door GFI	Garage	20A	120V	20A	20A	
6	Garage GFI w/100 Amp	Garage	20A	120V	20A	20A	
7	Disposal	Kitchen	20A	120V	20A	20A	
8	Water Heater	Bath	20A	120V	20A	20A	
9	Water Heater	Bath	20A	120V	20A	20A	
10	Dryer	Bath	20A	120V	20A	20A	

Project Name: **CAVINESS LEAD**  
 Property Address: **152 ANGEL OAK DR**  
 Date: **12/15/15**

Roofing	Pass
Exterior Siding	Pass
Windows	Pass
Doors	Pass
Foundation	Pass
Plumbing	Pass
Electrical	Pass
Mechanical	Pass
Radon	Pass
Asbestos	Pass
Lead	Pass

Name of Tester/Company: **CCA**  
 Date: **12/15/15** Phone: **910-374-2274**  
 Name of Tester/Company: **Carolina Comfort Air Inc.**  
 Date: **12/15/15** Phone: **910-339-2174**

Master & Smokes	20A	20A	W/D + Microwave
Family Room	20A	20A	Kitchen GFI
Bed + 3 Hall Breakers	20A	20A	Washer
Garage Foyer, Kitchen + Break	20A	20A	Microwave
Garage Door GFI	20A	20A	Bath GFI
Garage GFI w/100 Amp	20A	20A	Water Heater
Disposal	20A	20A	Dryer
Solar	20A	20A	
Solar	20A	20A	

 **WARNING DUAL POWER SOURCE**  
**SECOND SOURCE IS PHOTOVOLTAIC SYSTEM**

596-00495







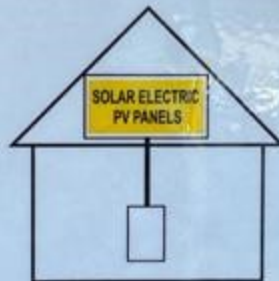


GENERAL DUTY  
SAFETY SWITCH  
INTERRUPTOR DE  
SEGURIDAD DE  
SERVICIO GENERAL  
60 A  
240 Vac / V-

ON

**SOLAR PV SYSTEM EQUIPPED  
WITH RAPID SHUTDOWN**

TURN RAPID SHUTDOWN  
SWITCH TO THE  
"OFF" POSITION TO  
SHUT DOWN PV SYSTEM  
AND REDUCE  
SHOCK HAZARD  
IN THE ARRAY



VIT

OFF



**⚠ WARNING DUAL POWER SOURCE  
SECOND SOURCE IS PHOTOVOLTAIC SYSTEM**

Y72577-3210  
14156874

000000

**FOCUS kWh**  
TYPE ALF 700M 25 CL200 240V 3W 60 Hz 1A+10 VA 7.2  
**SOUTH RIVER EMC**  
**TWACS 14156874**

97 624 591  
Landis+Gyr



 ENPHASE.

**⚠ WARNING**  
POWER SOURCE OUTPUT  
CONNECTION. DO NOT  
RELOCATE THIS  
OVERCURRENT DEVICE.



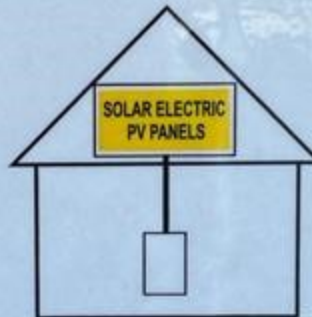


GENERAL DUTY  
SAFETY SWITCH  
INTERRUPTOR DE  
SEGURIDAD DE  
SERVICIO GENERAL  
60 A  
240 Vac / V~

ON

**SOLAR PV SYSTEM EQUIPPED  
WITH RAPID SHUTDOWN**

TURN RAPID SHUTDOWN  
SWITCH TO THE  
"OFF" POSITION TO  
SHUT DOWN PV SYSTEM  
AND REDUCE  
SHOCK HAZARD  
IN THE ARRAY



SOLAR ELECTRIC  
PV PANELS

VIT

595-0085

**PHOTOVOLTAIC AC DISCONNECT**

MAXIMUM AC OPERATING CURRENT: 35

NOMINAL OPERATING AC VOLTAGE: 240

VIT

595-0029

OFF





















WARNING PHOTOVOLTAIC  
POWER SOURCE

WARNING PHOTOVOLTAIC  
POWER SOURCE



GENERAL DUTY  
SAFETY SWITCH  
INTERLOCKED TO  
REVERSE OF  
ELECTRICAL  
PANEL

**SOLAR PV SYSTEM EQUIPPED  
WITH RAPID SHUTDOWN**

TURN RAPID SHUTDOWN

 **ENPHASE**

**WARNING**  
High-voltage output  
energized when  
inverter is on  
See all the  
warnings on the  
inverter

























45 (L-3)

Neutral

al



