









WARNING: PHOTOVOLTAIC  
POWER SOURCE





24116 Cat 1  
L PATED SHEATHING 7116 Cat 1





WARNING: PHOTOVOLTAIC  
POWER SOURCE

WARNING: PHOTOVOLTAIC  
POWER SOURCE



24/116 Cat 1  
7/116 Cat 1

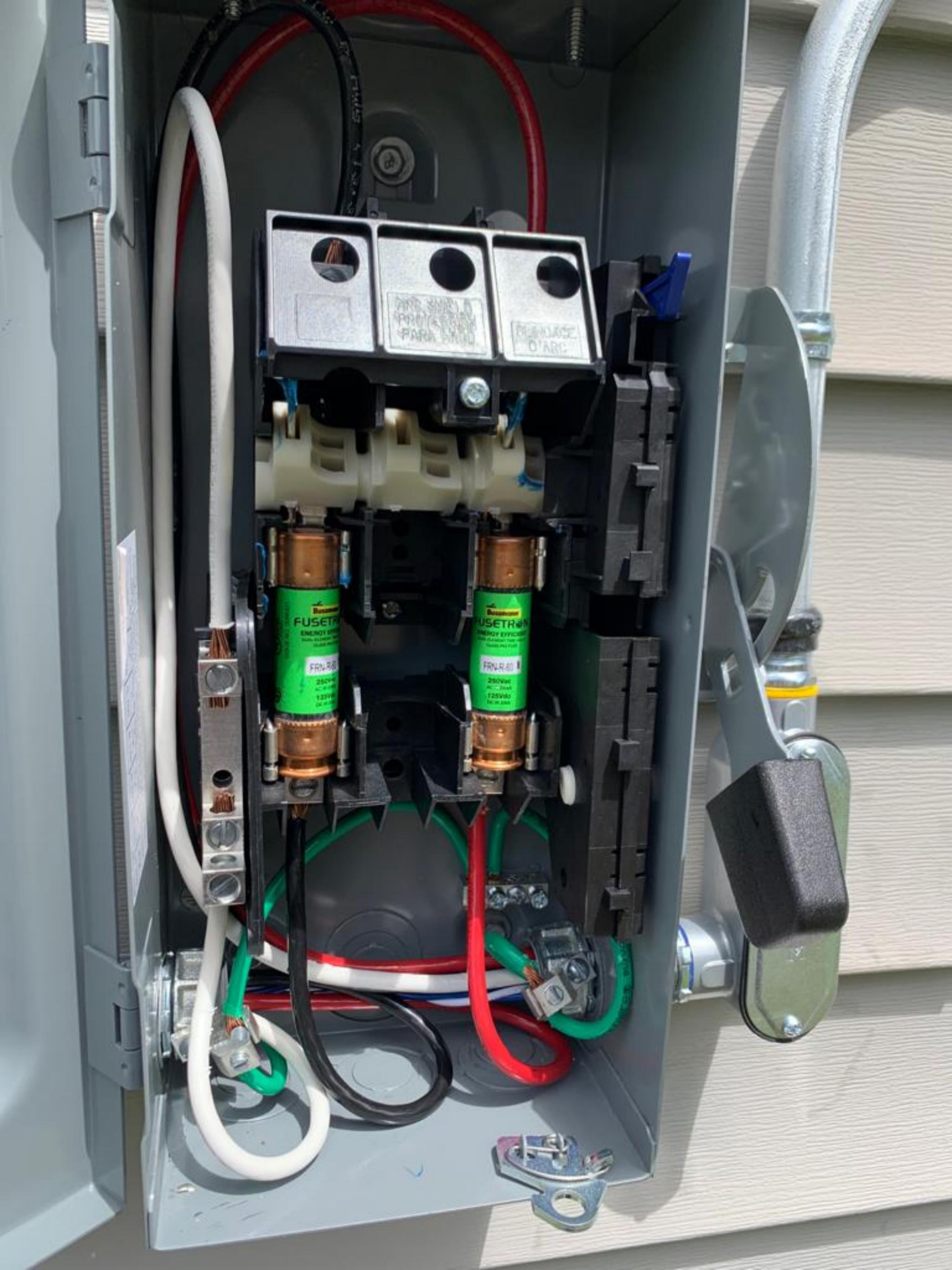
PAVED WEATHERING  
2/10/16

2/10/16  
TO  
GIVE

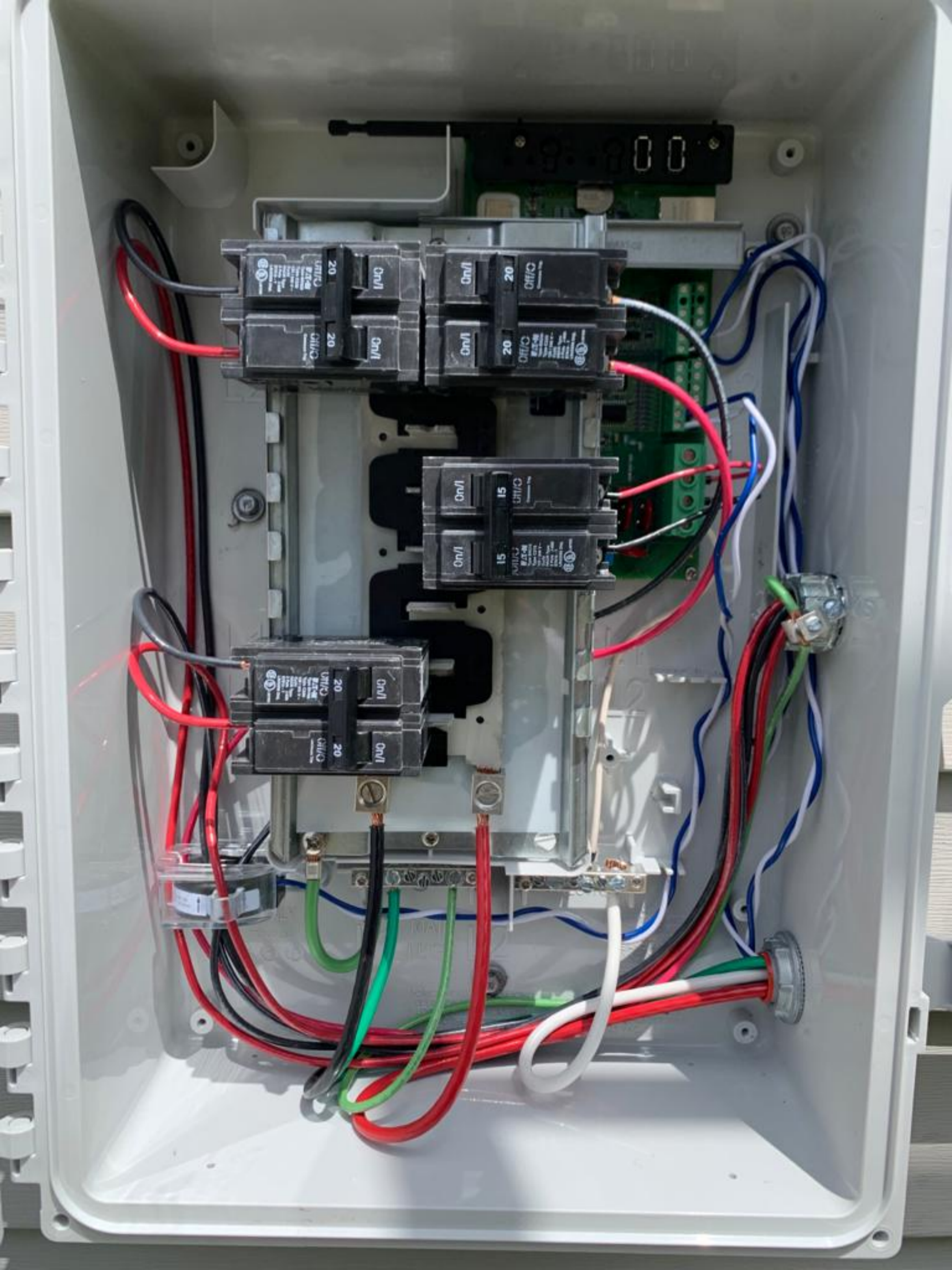




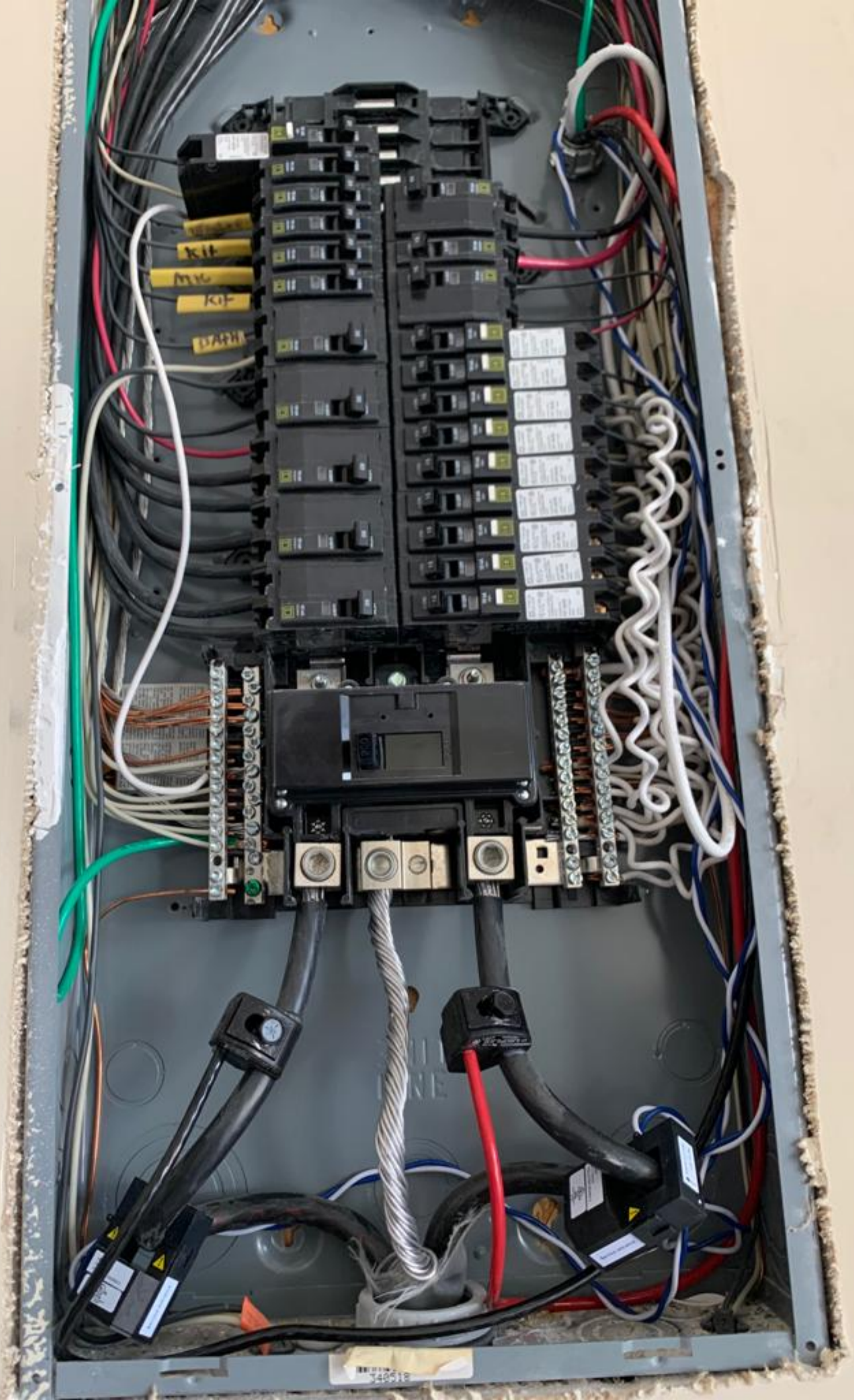




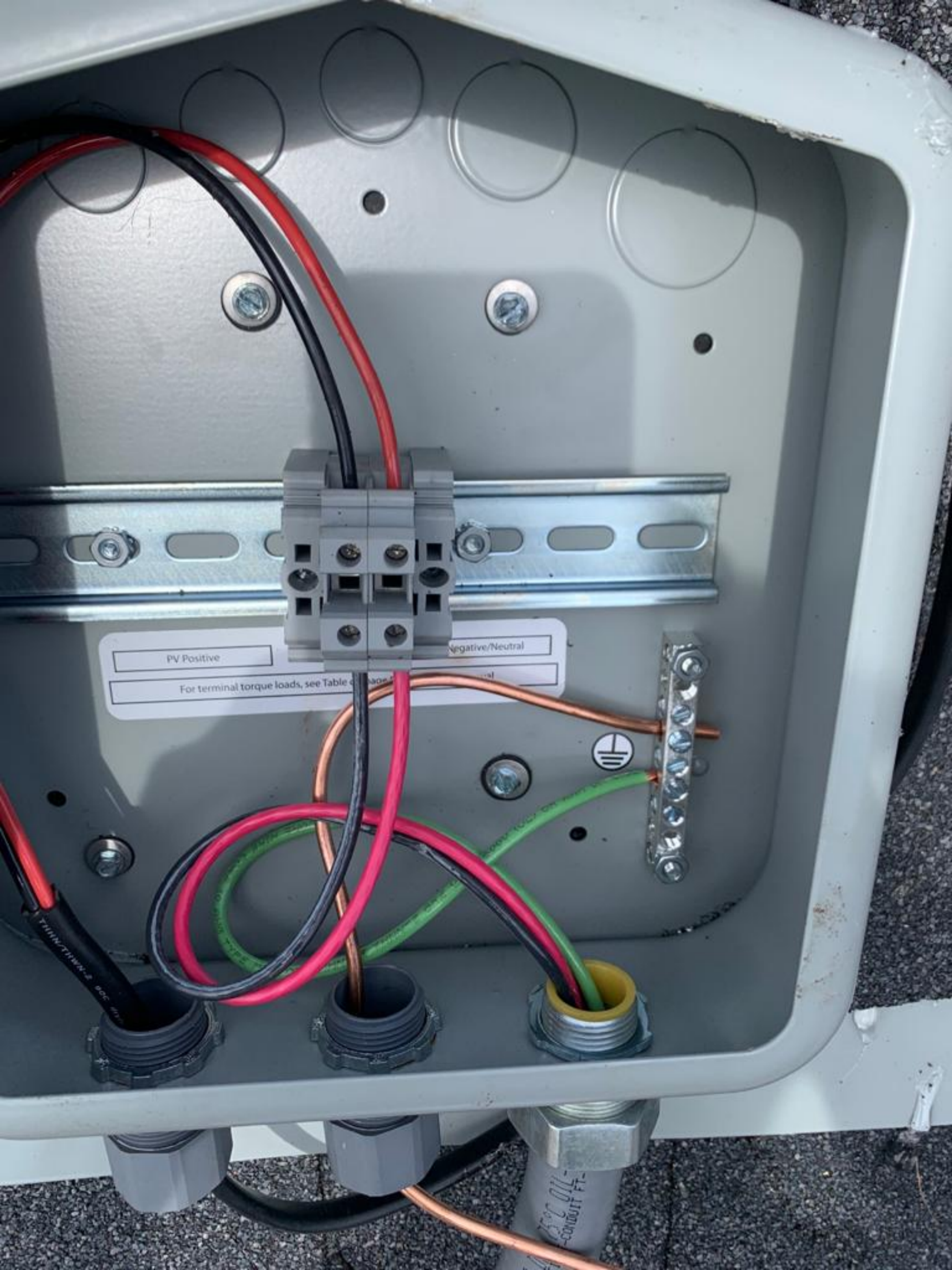












PV Positive

Negative/Neutral

For terminal torque loads, see Table 310.103(B)



1/2" O.D. CONDUIT FT.

























WARNING: PHOTOVOLTAIC  
POWER SOURCE



PHOTOVOLTAIC

ON

**GENERAL DUTY SAFETY SWITCH**  
INTERRUPTOR DE SEGURIDAD DE SERVICIO GENERAL  
60 A  
240 Vac / V-

**▲ DANGER / PELIGRO**

**SOLAR PV SYSTEM EQUIPPED WITH RAPID SHUTDOWN**

RAPID SHUTDOWN SWITCH TO THE "OFF" POSITION TO SHUT DOWN PV SYSTEM AND REDUCE SHOCK HAZARD IN THE ARRAY



**PHOTOVOLTAIC AC DISCONNECT**

MAXIMUM AC OPERATING CURRENT: 41  
NOMINAL OPERATING AC VOLTAGE: 240

OFF

**ELECTRICAL PERMIT**  
910-899-2...  
www.hamm...

PERMIT SUBJECT	
modules grid	DATE ISSUED: 1/1/2011
ZONING DISTRICT	

NC 27546 CROSBY, TX 77532

IR 22903

Lew  
Arthur