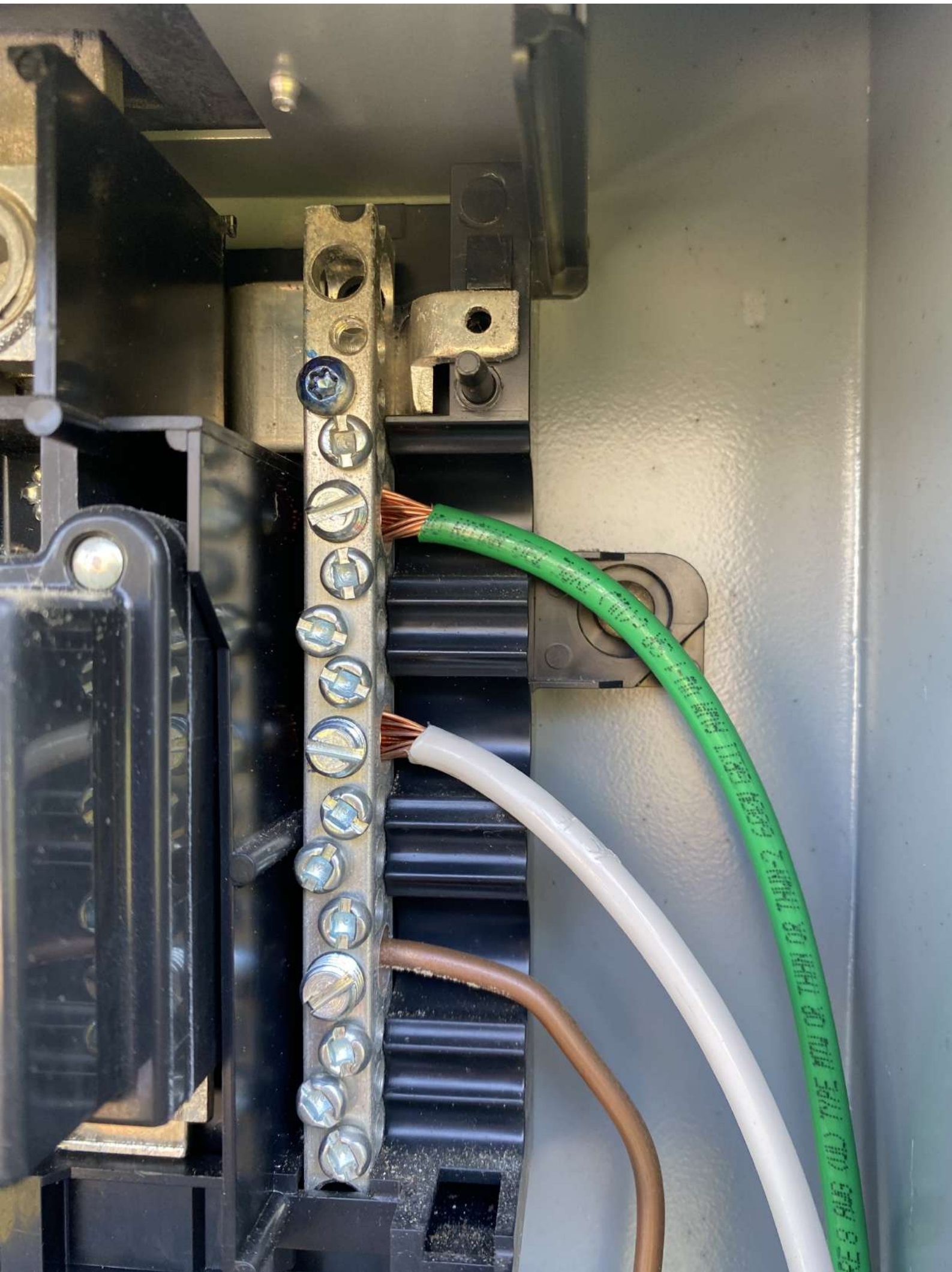


POWER SOURCE

solar**edge**

HD wave







075121







021579BES-0A



Do Not Remove
71579BES-0B



Intertek
4004950



CAUTION

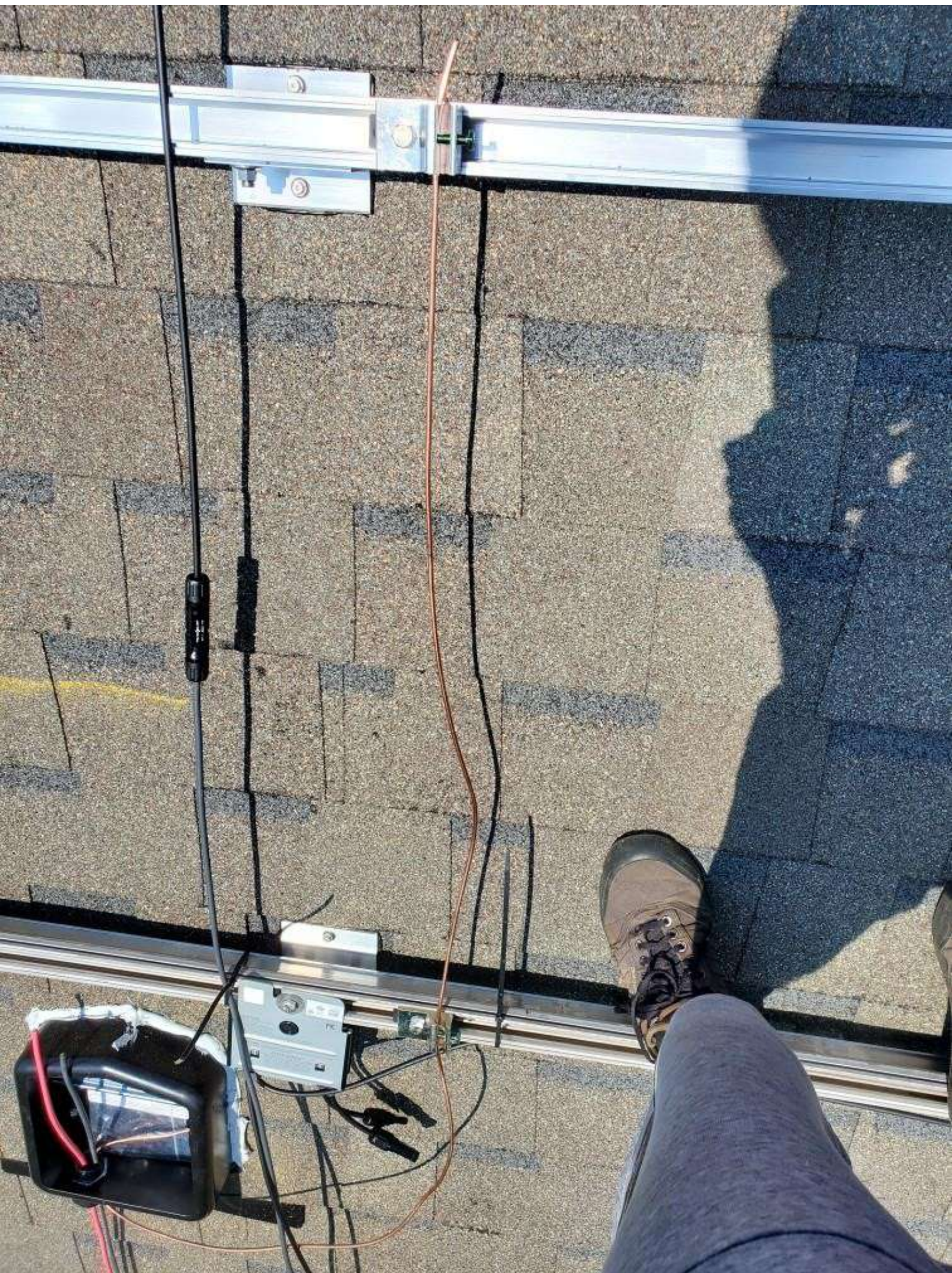
HOT SURFACES TO REDUCE THE RISK OF BURNS DO NOT TOUCH. RISK OF ELECTRIC SHOCK WHEN THE PHOTOVOLTAIC ARRAY IS EXPOSED TO LIGHT, IT SUPPLIES A DC VOLTAGE TO EQUIPMENT. COVER PV MODULE WITH OPAQUE MATERIAL BEFORE CONNECTING OR DISCONNECTING THIS OPTIMIZER. DURING FAULT, ZERO CURRENT IS SOURCED INTO DC ARRAY BY CONVERTER.

WARNING ELECTRIC SHOCK HAZARD: THE DC CONDUCTORS OF THIS PHOTOVOLTAIC SYSTEM ARE UNGROUNDED AND MAY BE ENERGIZED.

AVERTISSEMENT

RISQUE DE CHOC ELECTRIQUE: QUAND LE CHAMP PHOTOVOLTAIQUE EST EXPOSE A LA LUMIERE, UNE TENSION CC EST FOURNIE A CET EQUIPEMENT. SURFACES CHAUDES: NE PAS TOUCHER, AFIN DE REDUIRE LES RISQUES DE BRULURES LE COURANT DE RETOUR INJECTE PAR LE CONVERTISSEUR EN CAS DE DEFAILLANCE DANS LE MODULE PV EST TOUJOURS NUL.







KLEIN TOOLS

CL800

°F

Hz

A

V

NCV

OFF

SEL

RANGE

MAX MIN

ZERO

6000 Counts

600A AC/DC Digital Clamp Meter

12.57

True RMS TOUGH METER

CAT III 1000V
CAT IV 600V

COM

VΩ

Hz % Temp





WARNING DUAL POWER SOURCE
SECOND SOURCE IS PHOTOVOLTAIC SYSTEM

CAUTION: SOLAR ELECTRIC SYSTEM CONNECTED



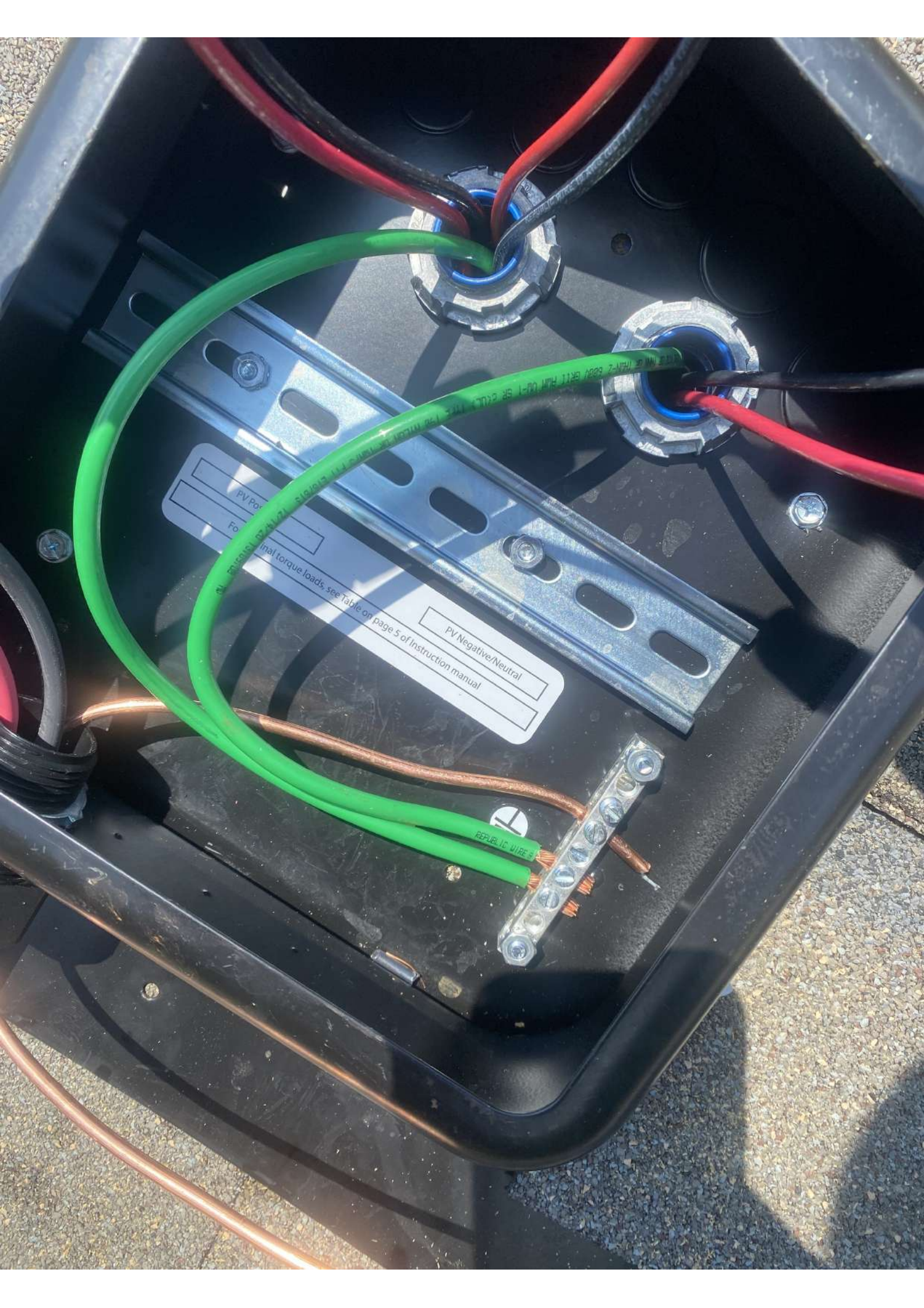
SERVICE DISCONNECT
DESA OPERACION DE ALIMENTACION

*SOLAR!
DO NOT
RELOCATE!*

444-888 Storage Production...
DUKE ENERGY CORPORATION
DUKE ENERGY SERVICES, INC.
DUKE ENERGY PROGRESS
DUKE ENERGY SERVICES, INC.
DUKE ENERGY CORPORATION
DUKE ENERGY SERVICES, INC.







PV Positive
For
Final torque loads, see Table on page 5 of Instruction manual
PV Negative/Neutral

REPUBLIC WIRE

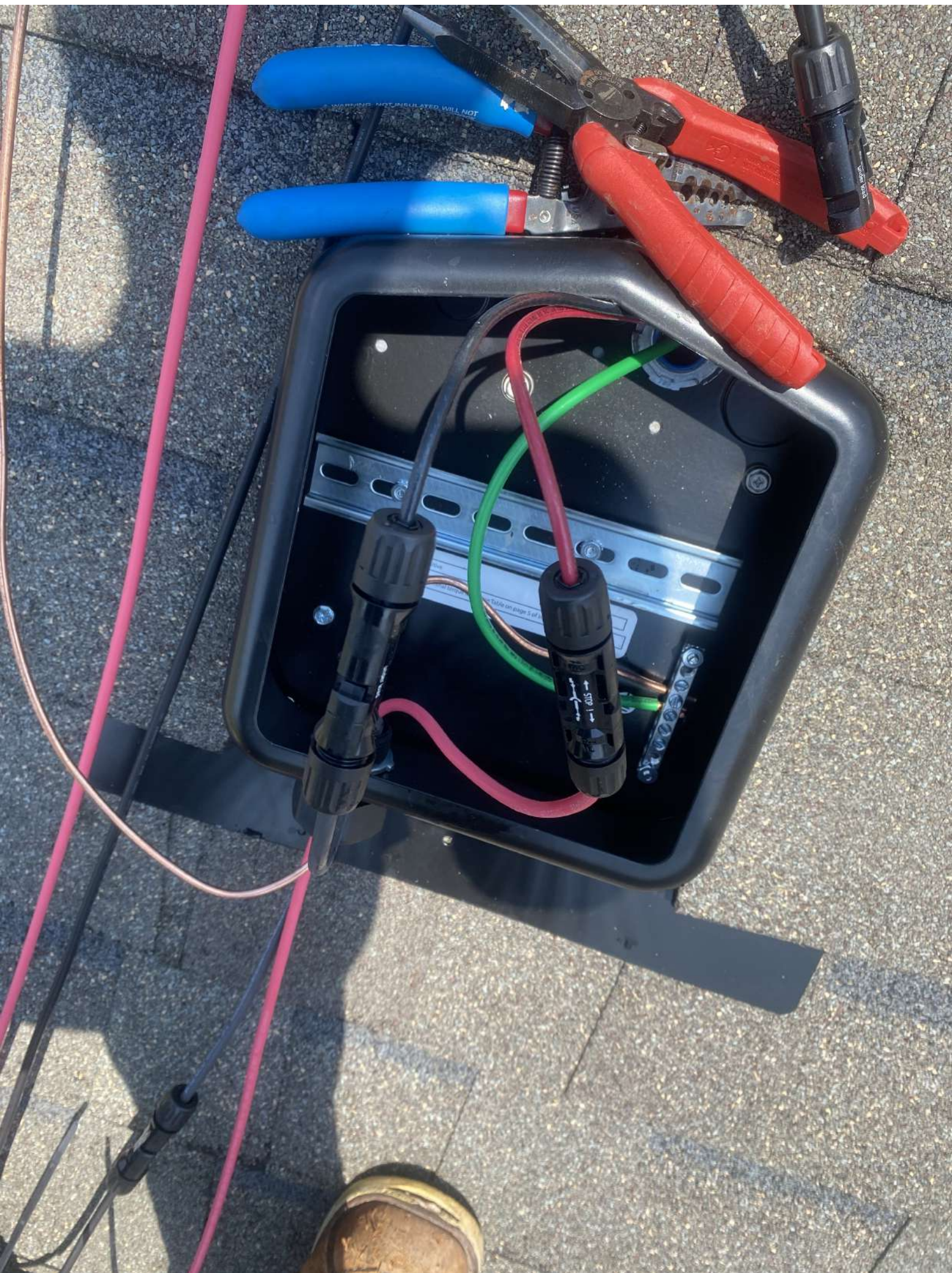












⚠ WARNING

ELECTRICAL SHOCK HAZARD

TERMINALS ON THE LINE AND
LOAD SIDES MAY BE ENERGIZED
IN THE OPEN POSITION

596-00878

PHOTOVOLTAIC AC DISCONNECT

RATED AC OUTPUT CURRENT:

NOMINAL OPERATING AC VOLTAGE

596-00892

25
240

VHT

VHT

solar

The SolarEdge
the applical

solar
edge

Welcome to the SolarEdge Family

To ensure the best
SolarEdge device

It's simple. Just e
device serial num
at: solaredge.com/registr

DEVICE S/N:

SV1421-0730C5888-5F



REGISTE

A complete copy of the warrant
<https://www.solaredge.com/s>

If you prefer a printed copy of the warranty to be
we will gladly provide.

solar
edge

PN: SE6000H - US000BNU4

SN: SV1421 - 0730C5888 - 5F

Type 1 Photovoltaic Arc - Fault Circuit - Protection

Made in Vietnam

WARRANTY
-may-2020.pdt
use contact support@solaredge.com or call our support center and



A50011-INV
REV A

MAN-PKG-00044
REV 7

* In
http

The Limit
such as,
compon
optimiz

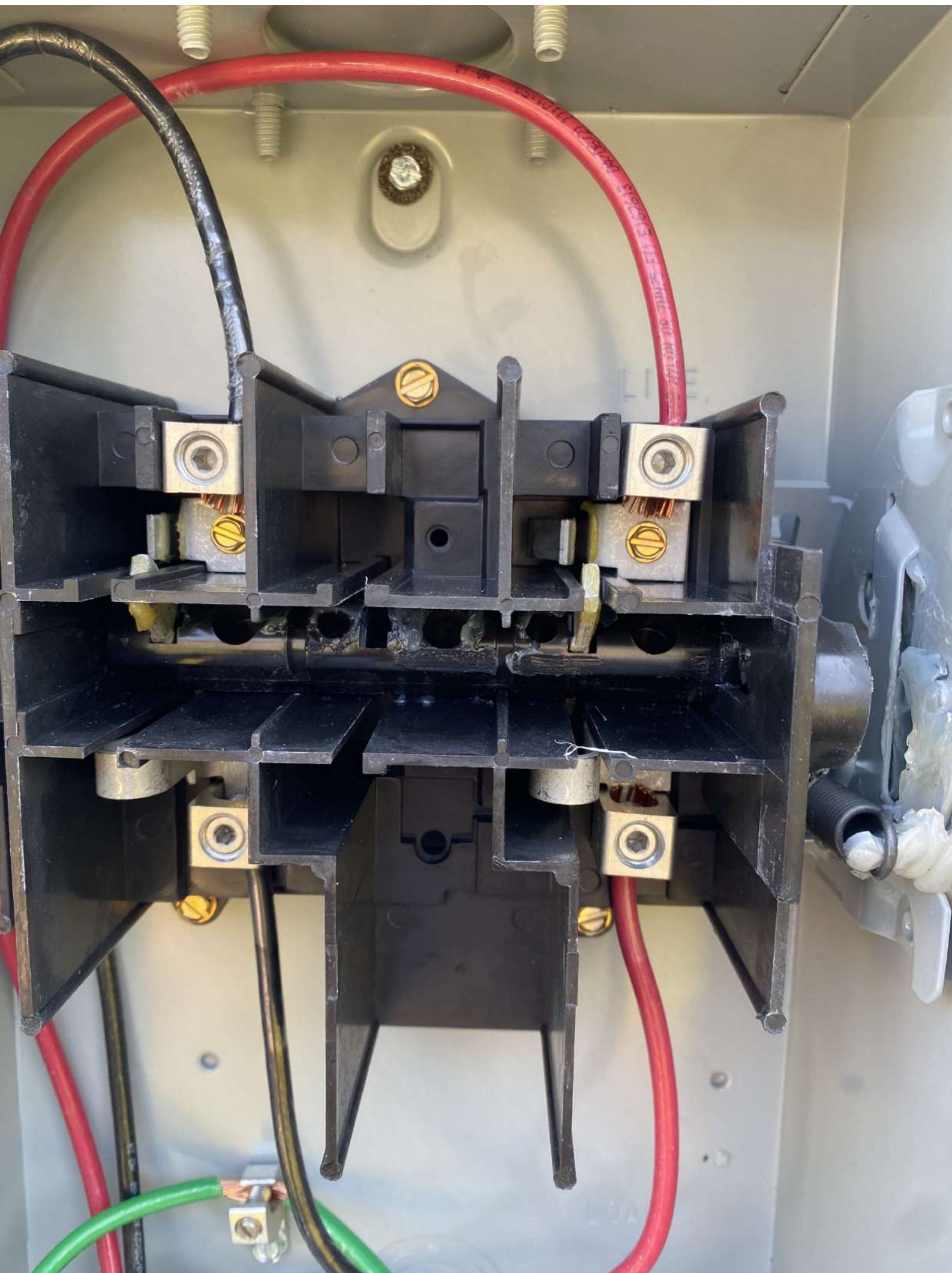


SOLADECK
WARNING: This device is not to be used for any other purpose than the one intended. It is not a power tool. It is not to be used for any other purpose than the one intended. It is not a power tool. It is not to be used for any other purpose than the one intended. It is not a power tool.

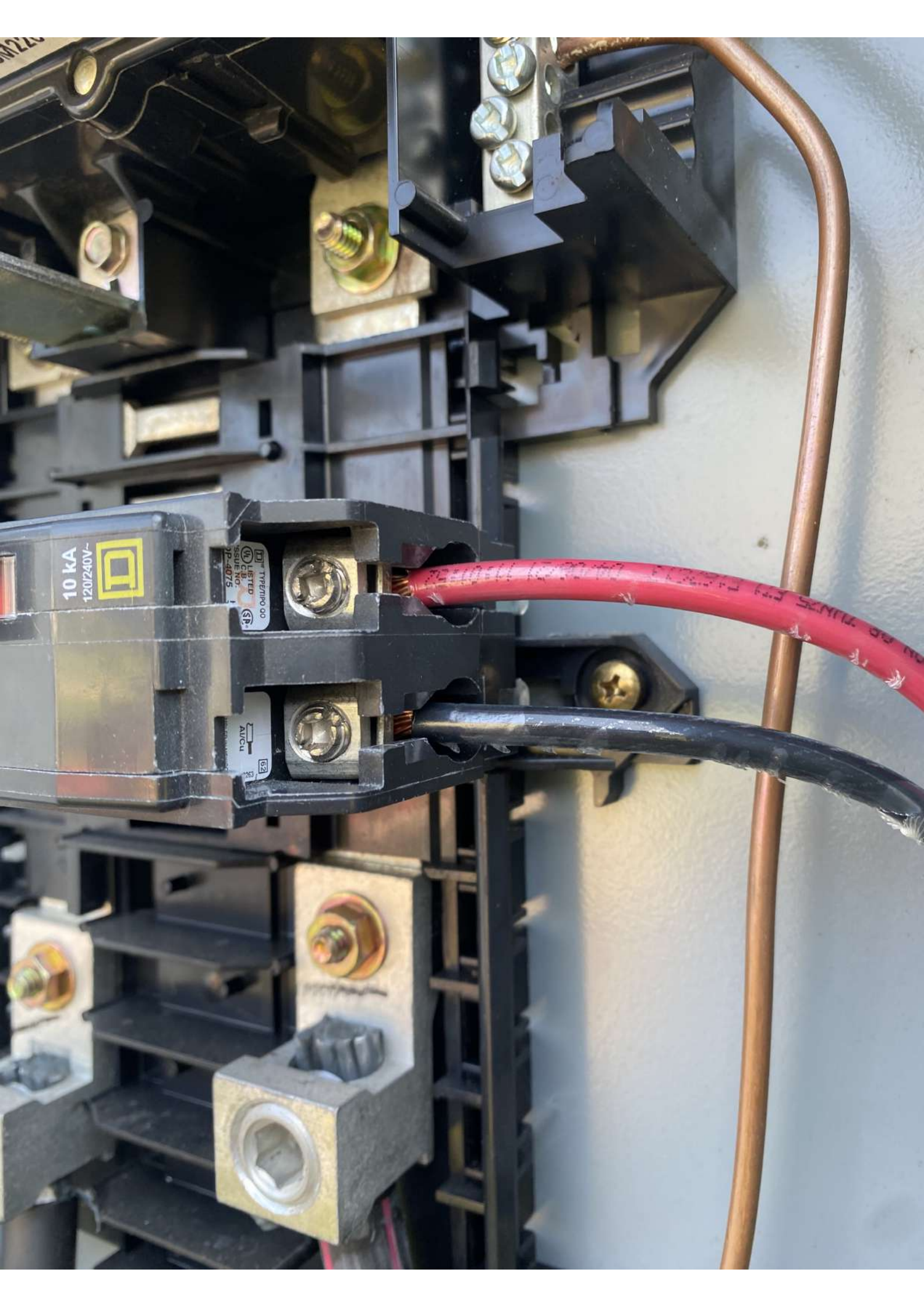
CAUTION
WARNING: This device is not to be used for any other purpose than the one intended. It is not a power tool. It is not to be used for any other purpose than the one intended. It is not a power tool. It is not to be used for any other purpose than the one intended. It is not a power tool.



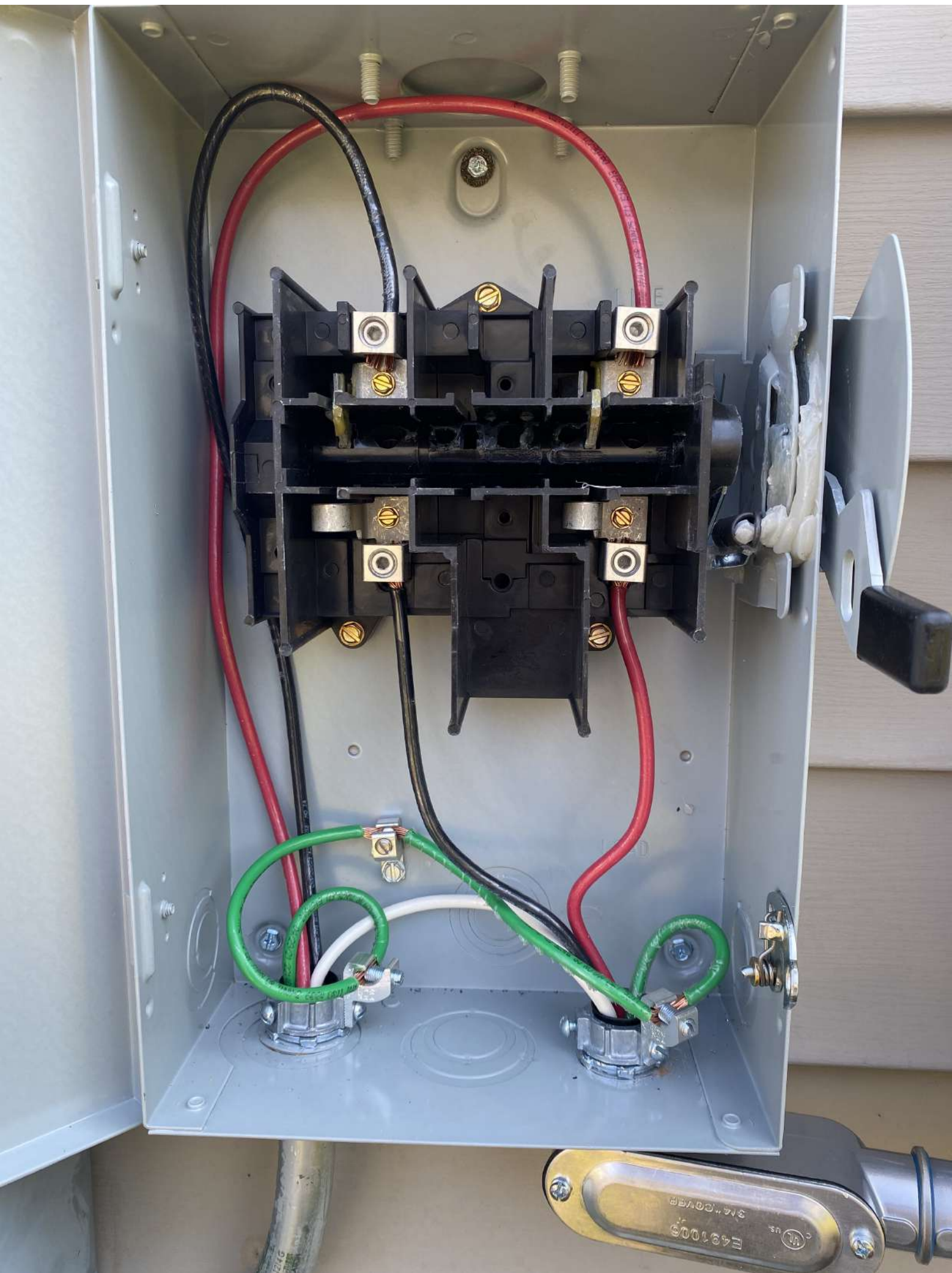
















Everest Solar Systems, LLC
RailConn CR 44-X Struct Set, H111
OCD Protection Rating 30 AMP
Conforms to ANSI/UL 2703 05/22/23

E467724

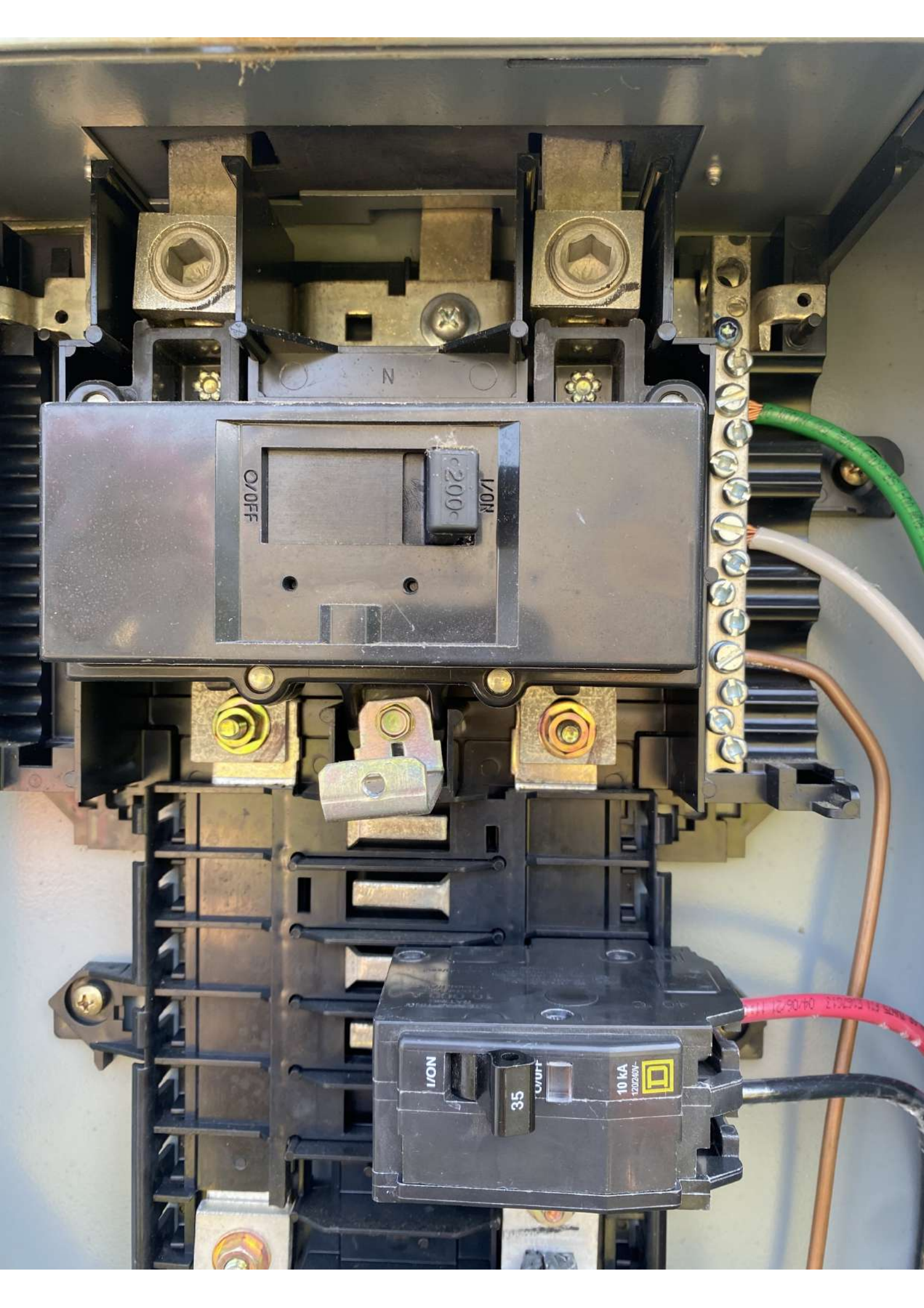




Position

see Table on page 5 of Instruction manual

PV Negative/Neutral



O/OFF

I/ON
200

N

I/ON

35

O/OFF

10 KA
120/240V

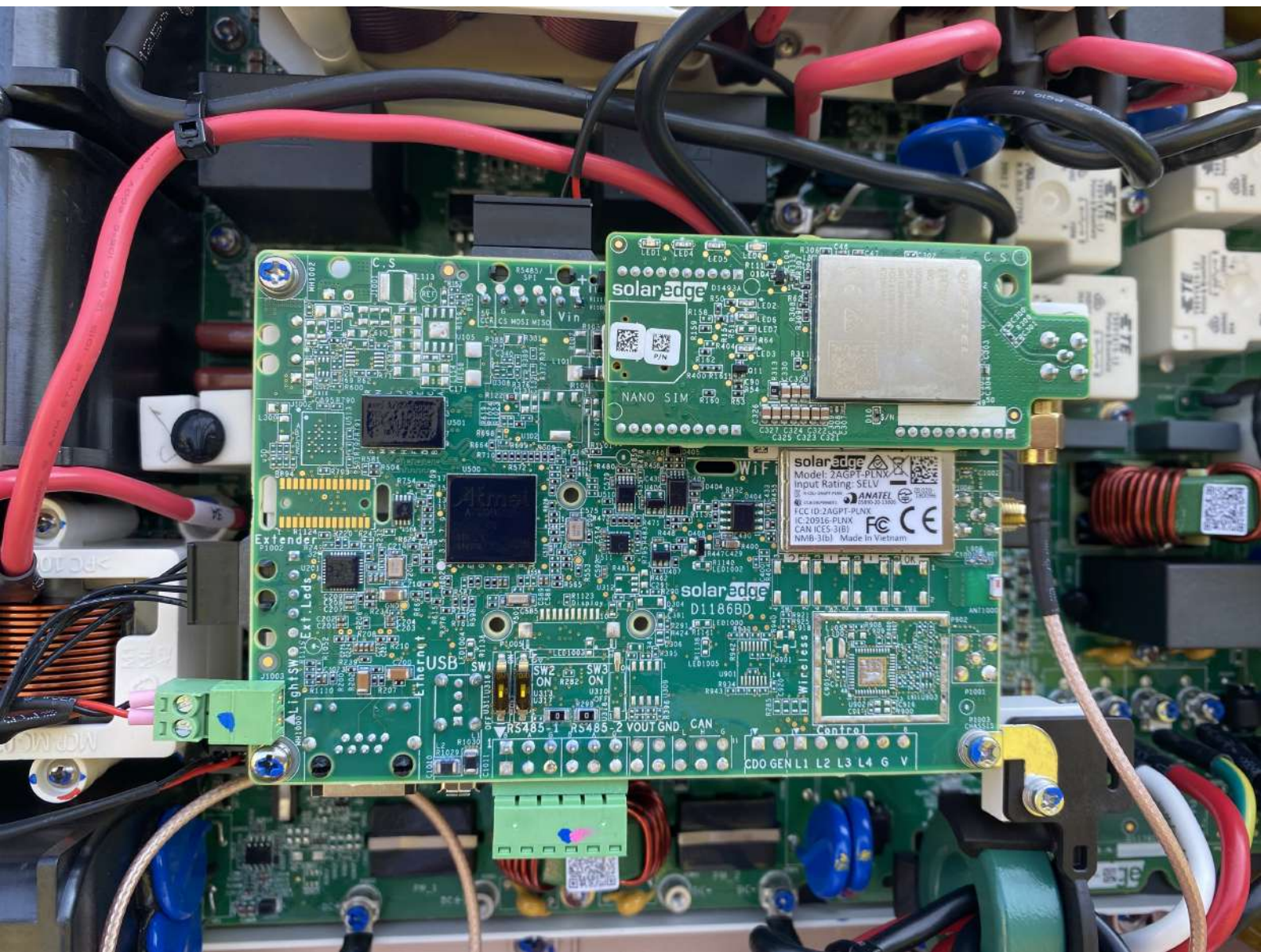
04/06/21



2
4
1
SOLAR!
DO NOT
Relocate!







solar edge
D1186BD
NANO SIM

solar edge
Model: 2AGPT-PLNX
Input Rating: SELV
ANATEL
FCC ID: 2AGPT-PLNX
IC: 20916-PLNX
CAN ICES-3(B)
NMB-3(b) Made in Vietnam

solar edge
D1186BD

C.S
Vin
U500
U501
U502
U503
U504
U505
U506
U507
U508
U509
U510
U511
U512
U513
U514
U515
U516
U517
U518
U519
U520
U521
U522
U523
U524
U525
U526
U527
U528
U529
U530
U531
U532
U533
U534
U535
U536
U537
U538
U539
U540
U541
U542
U543
U544
U545
U546
U547
U548
U549
U550
U551
U552
U553
U554
U555
U556
U557
U558
U559
U560
U561
U562
U563
U564
U565
U566
U567
U568
U569
U570
U571
U572
U573
U574
U575
U576
U577
U578
U579
U580
U581
U582
U583
U584
U585
U586
U587
U588
U589
U590
U591
U592
U593
U594
U595
U596
U597
U598
U599
U600
U601
U602
U603
U604
U605
U606
U607
U608
U609
U610
U611
U612
U613
U614
U615
U616
U617
U618
U619
U620
U621
U622
U623
U624
U625
U626
U627
U628
U629
U630
U631
U632
U633
U634
U635
U636
U637
U638
U639
U640
U641
U642
U643
U644
U645
U646
U647
U648
U649
U650
U651
U652
U653
U654
U655
U656
U657
U658
U659
U660
U661
U662
U663
U664
U665
U666
U667
U668
U669
U670
U671
U672
U673
U674
U675
U676
U677
U678
U679
U680
U681
U682
U683
U684
U685
U686
U687
U688
U689
U690
U691
U692
U693
U694
U695
U696
U697
U698
U699
U700
U701
U702
U703
U704
U705
U706
U707
U708
U709
U710
U711
U712
U713
U714
U715
U716
U717
U718
U719
U720
U721
U722
U723
U724
U725
U726
U727
U728
U729
U730
U731
U732
U733
U734
U735
U736
U737
U738
U739
U740
U741
U742
U743
U744
U745
U746
U747
U748
U749
U750
U751
U752
U753
U754
U755
U756
U757
U758
U759
U760
U761
U762
U763
U764
U765
U766
U767
U768
U769
U770
U771
U772
U773
U774
U775
U776
U777
U778
U779
U780
U781
U782
U783
U784
U785
U786
U787
U788
U789
U790
U791
U792
U793
U794
U795
U796
U797
U798
U799
U800
U801
U802
U803
U804
U805
U806
U807
U808
U809
U810
U811
U812
U813
U814
U815
U816
U817
U818
U819
U820
U821
U822
U823
U824
U825
U826
U827
U828
U829
U830
U831
U832
U833
U834
U835
U836
U837
U838
U839
U840
U841
U842
U843
U844
U845
U846
U847
U848
U849
U850
U851
U852
U853
U854
U855
U856
U857
U858
U859
U860
U861
U862
U863
U864
U865
U866
U867
U868
U869
U870
U871
U872
U873
U874
U875
U876
U877
U878
U879
U880
U881
U882
U883
U884
U885
U886
U887
U888
U889
U890
U891
U892
U893
U894
U895
U896
U897
U898
U899
U900
U901
U902
U903
U904
U905
U906
U907
U908
U909
U910
U911
U912
U913
U914
U915
U916
U917
U918
U919
U920
U921
U922
U923
U924
U925
U926
U927
U928
U929
U930
U931
U932
U933
U934
U935
U936
U937
U938
U939
U940
U941
U942
U943
U944
U945
U946
U947
U948
U949
U950
U951
U952
U953
U954
U955
U956
U957
U958
U959
U960
U961
U962
U963
U964
U965
U966
U967
U968
U969
U970
U971
U972
U973
U974
U975
U976
U977
U978
U979
U980
U981
U982
U983
U984
U985
U986
U987
U988
U989
U990
U991
U992
U993
U994
U995
U996
U997
U998
U999
U1000

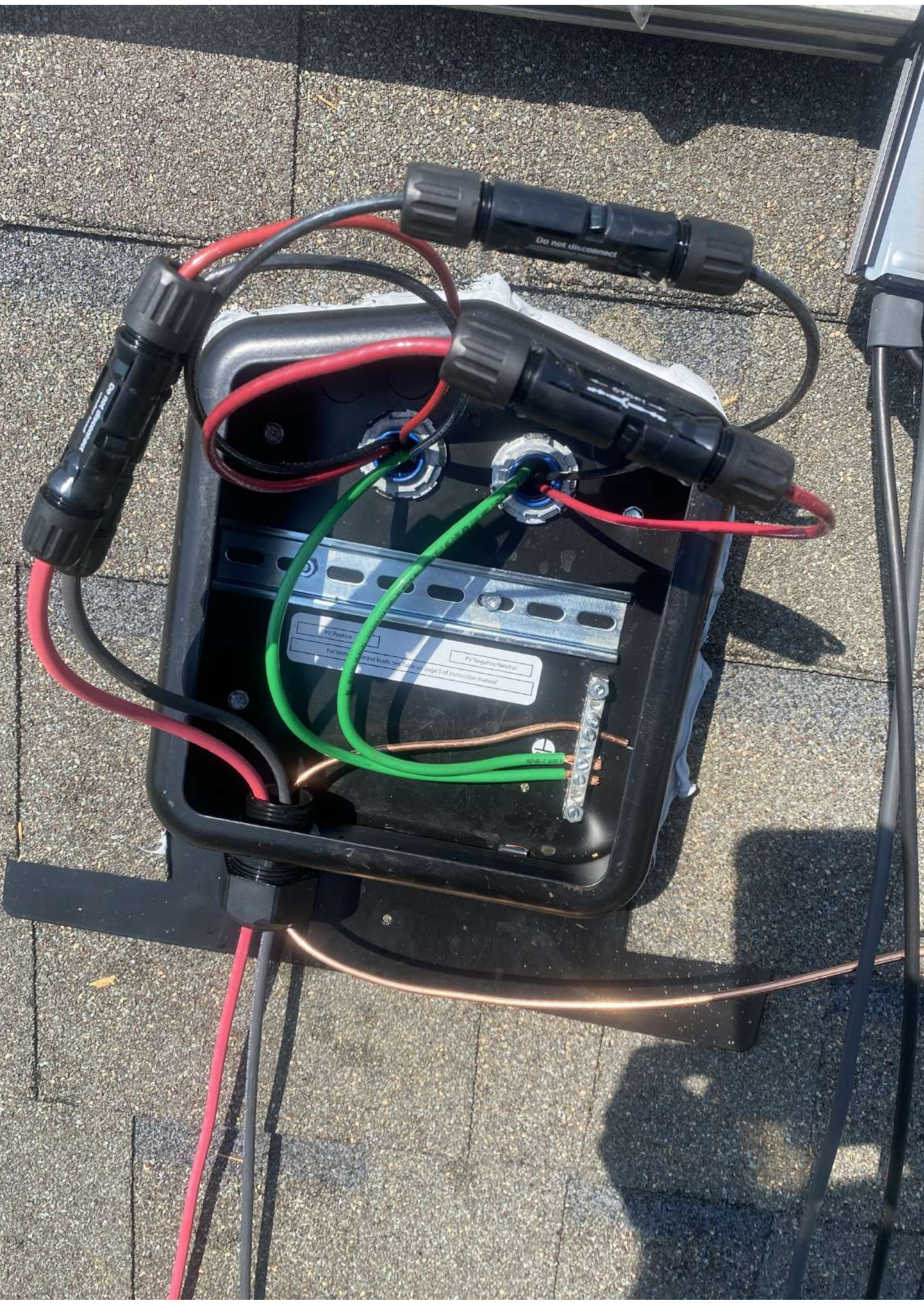
USB SW1 SW2 SW3
Ethernet

RS485-1 RS485-2 VOUT GND CAN

Control
CDO GEN L1 L2 L3 L4 G V

Extender
P1002

Light SW
P1003

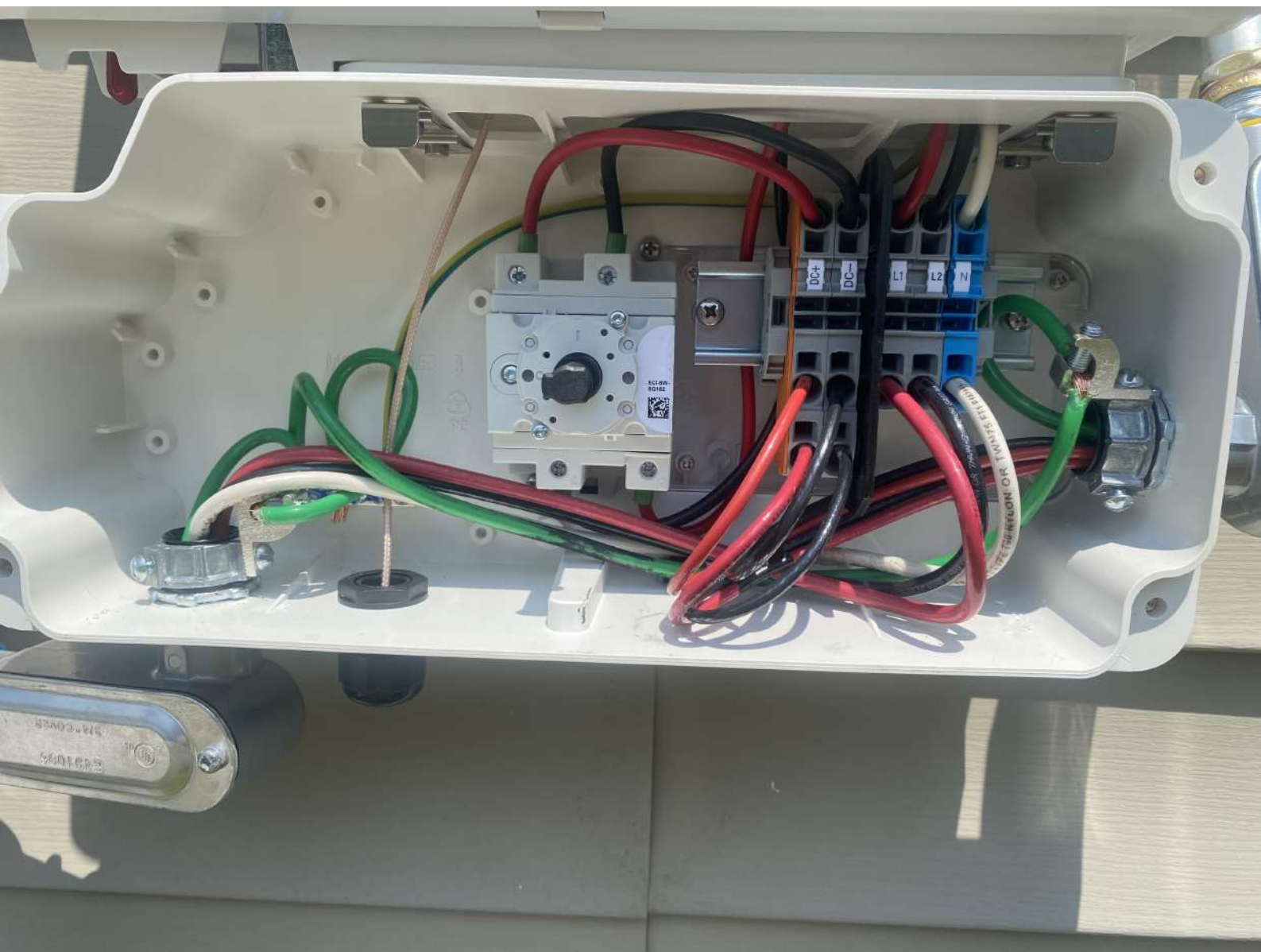


PV Positive

For terminal output loads, see note on page 3 of instruction manual

PV Negative/Neutral









LG355N1K - A6

| | | | |
|-------------------|--------------|------------------------------|---------|
| Serial No. | 107U1WD2W2C9 | Pmax (Bifl 100) | 356.4 W |
| Manufactured Date | 210731 | Pmax Bifaciality coefficient | 0.06 |
| Pmax (-0/+3)% | 355 W | Voc Bifaciality coefficient | 0.88 |
| Vmpp | 34.30 V | Isc Bifaciality coefficient | 0.07 |
| Imp | 10.37 A | Max. Sys. Voltage (UL) | 1,000 V |
| Voc (-5/+5)% | 41.60 V | Max. Sys. Voltage (IEC/CSA) | 1,000 V |
| Isc (-5/+5)% | 10.84 A | Max. Series Fuse | 20 A |
| Max. Test Load | 5,400Pa | Fire Type | Type 2 |

*See Installation Instructions for Installation Requirements to Achieve a Specified System Fire Class Rating with this Product.
 *Standard Test Condition : 1,000W/m², AM 1.5 Spectrum, Cell temperature 25°C
 *See module installation manual for appropriate mating connectors.
 *Tested to IEC 61215-2: 2016, IEC 61730-1: 2016, UL/CSA 61730

⚠ WARNING/AVERTISSEMENT

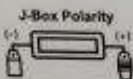
⚠ Risk of electric shock/Précaution de choc électrique
DO NOT connect or disconnect plug contacts while a system is under load current, **DO NOT** approach the damaged or broken module, unless you are an expert. Otherwise, it may result in a hazardous situation or a serious injury.
Ne connectez ou déconnectez pas le connecteur pendant qu'un système est sous la charge électrique. Ne approchez pas un module endommagé ou détérioré, si vous n'êtes pas un expert. Sinon, il peut en résulter une situation hasardeuse ou une blessure sérieuse.

⚠ Risk of fires and burns/Précaution de feu et incendie
DO NOT contact with electrically active parts.
Ne touchez pas des parts actives électriquement.

Refer to installation and operation manual before installing, operation or servicing this unit.
 Avant d'installer ou mettre en service cette unité, se référer au manuel d'installation et d'opération.



*Maximum series overcurrent protective device, where required.
 *For field connections, use 12AWG copper wires only insulated for a minimum of 90°C, rated for wet conditions and resistant to ultraviolet radiation (where exposed).



Produced by LG Electronics Inc.
 Made in U.S from Imported Parts

MEZ62435799(REV00)

EIA
E-20
250 lb-in/pulgada



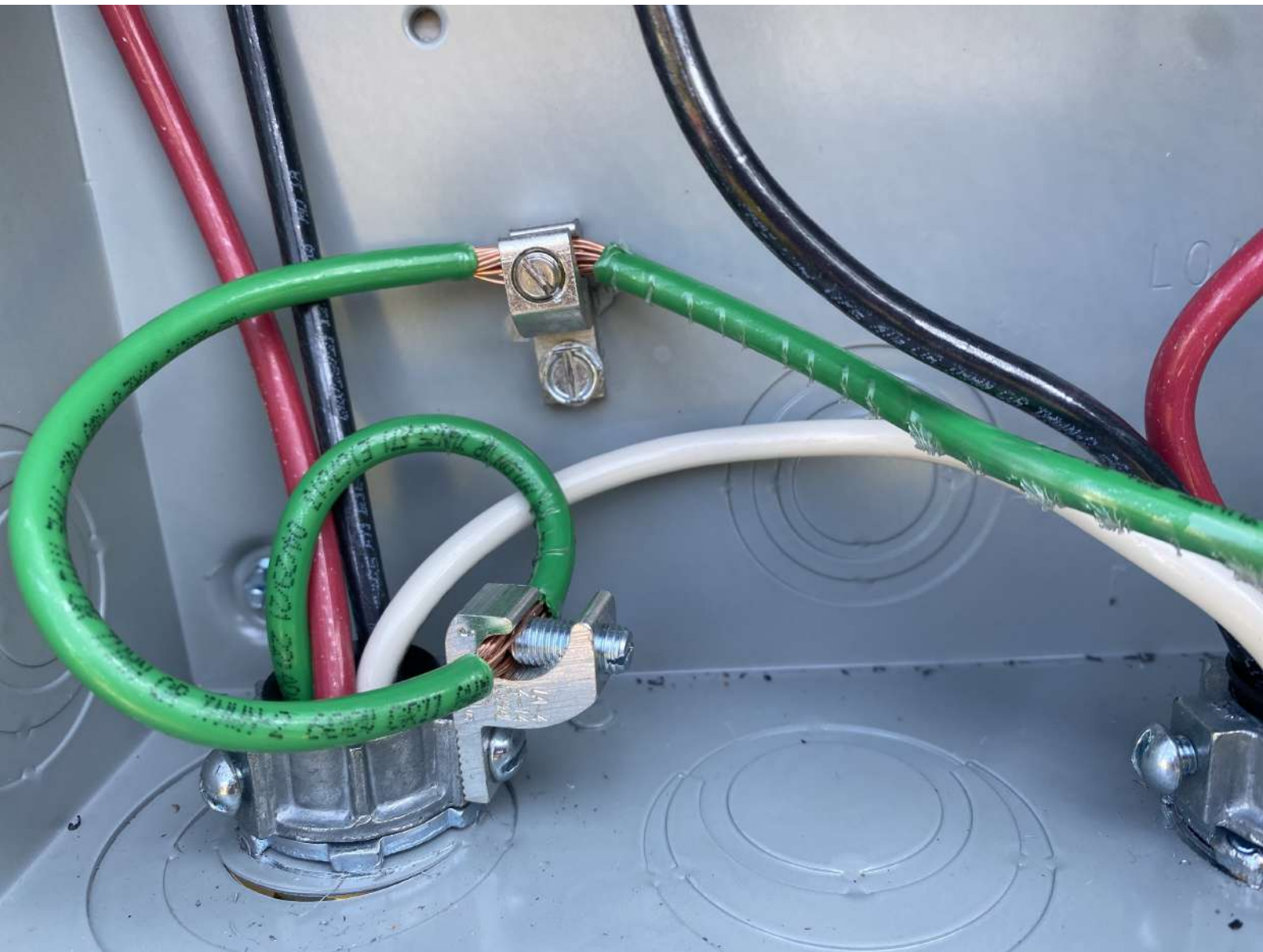
I/ON

35

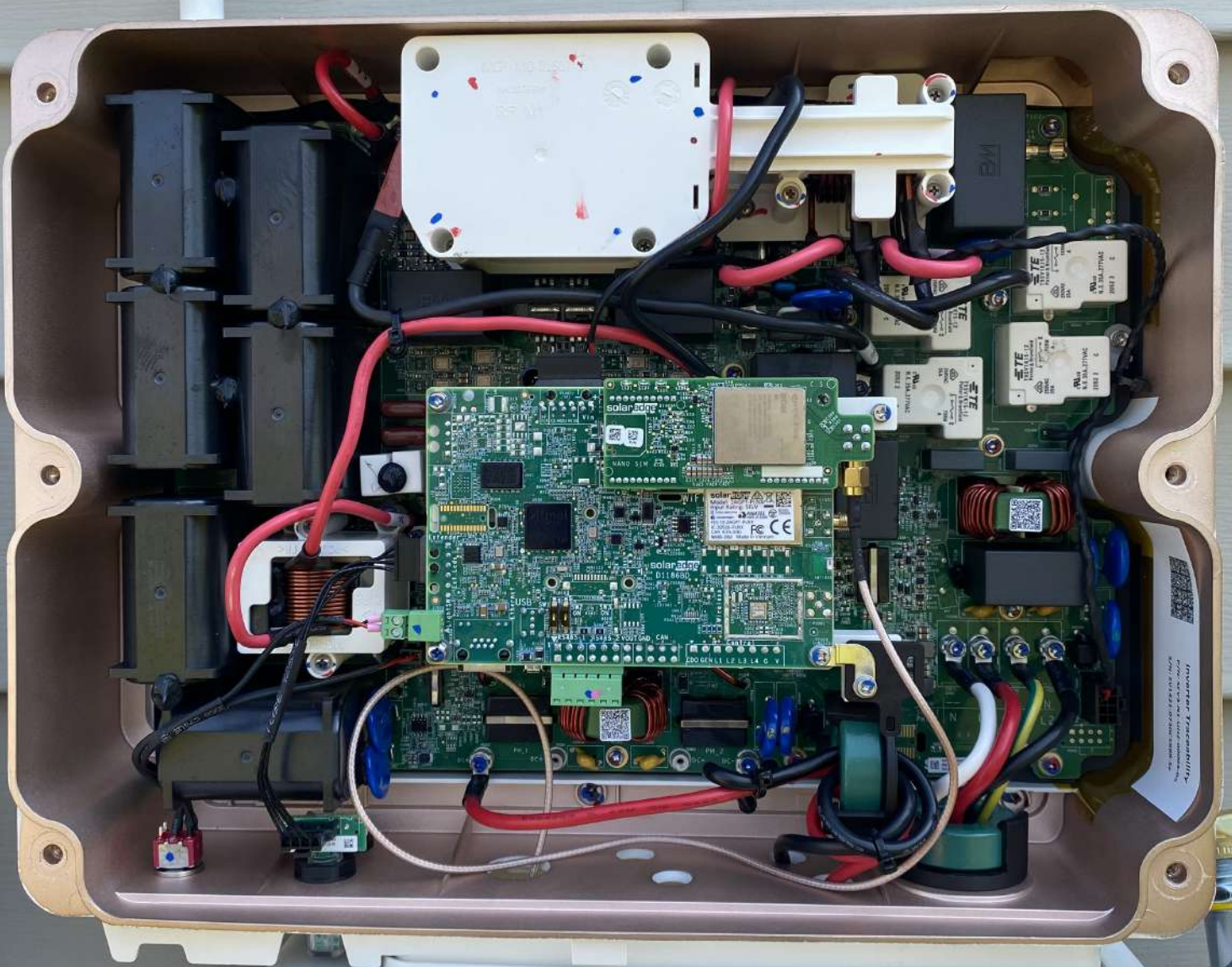
O/OFF

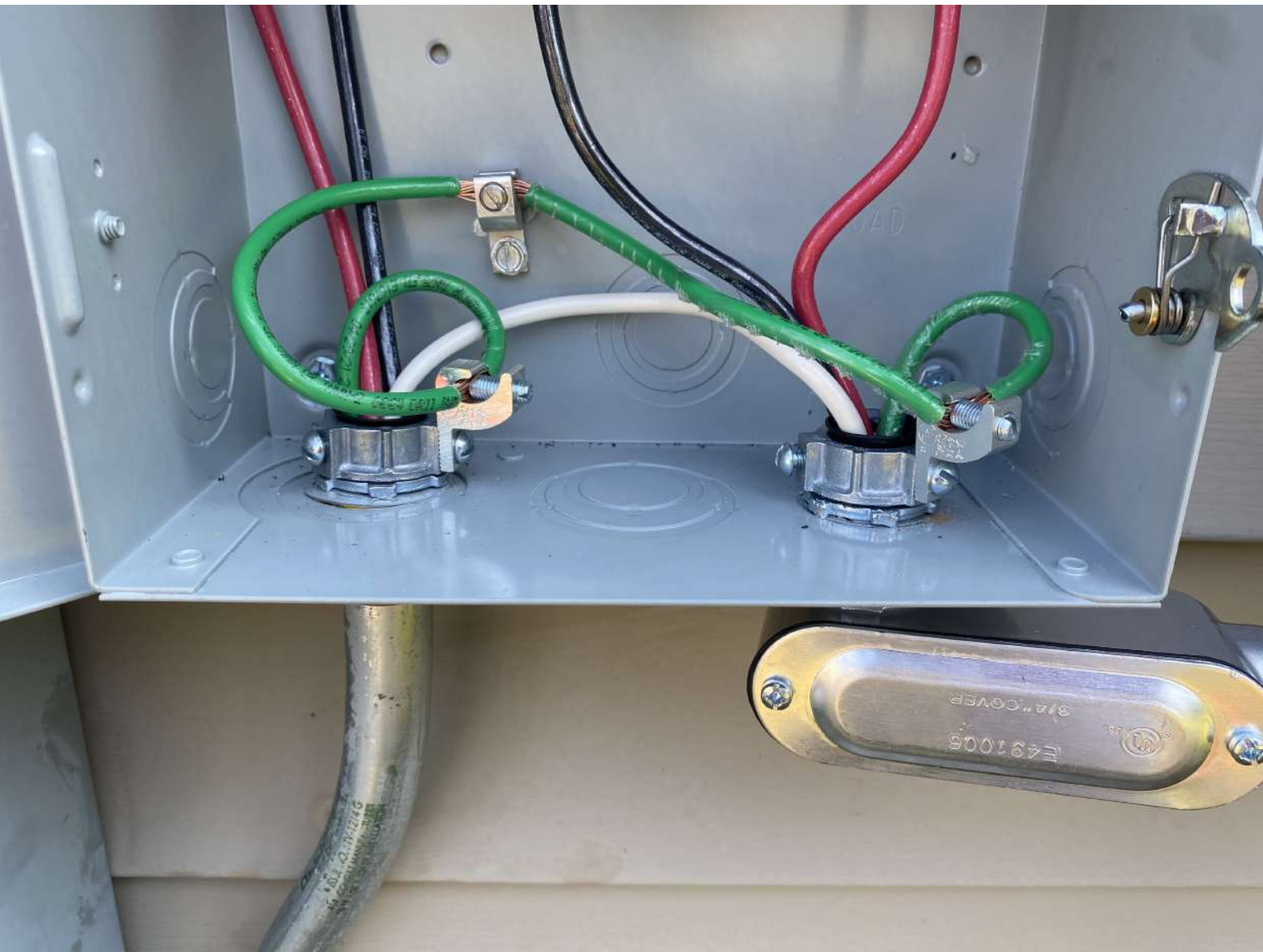
10 kA
120/240V~





solarpage







SolarEdge | IndOP

DC Output: 400W/500V/15A
DC Input: 8-60V/11.75A
Open Circuit Voltage: 1V
NA30 SV4920A-021579BC5-D8
IN: Vietnam R401 6NM4MRM

