





**⚠ WARNING**

THIS SERVICE METER IS ALSO SERVED BY A PHOTOVOLTAIC SYSTEM

GRIDSTREAM RF  
90BC8CE4

Type FOCUS AXRe-SD  
FORM 75 CL200 240V 3W 60HZ TA=30 KH 7.2

**CENTRAL EMC**

166 769 993  
904  
021  
Lan: +Cyt

**⚠ WARNING**  
HAZARD OF ELECTRICAL SHOCK OR BURNAL  
DO NOT SERVICE ORAL  
CONTACT UTILITY  
POWER SERVICE



WARNING: PHOTOVOLTAIC  
POWER SOURCE



**WARNING**  
POWER SOURCE OUTPUT CONNECTION  
DO NOT RELOCATE THIS OVERCURRENT DEVICE

ENVOY

PHASE 1 POSITIVE CONNECT

**WARNING:**  
RISK OF ELECTRIC SHOCK. DO NOT REMOVE COVER.  
NO USER SERVICEABLE PARTS INSIDE.  
REFER SERVICING TO QUALIFIED SERVICE PERSONNEL.  
WHEN THE PHOTOVOLTAIC ARRAY IS EXPOSED TO LIGHT,  
IT SUPPLIES AN AC VOLTAGE TO THIS EQUIPMENT.

**AVERTISSEMENT:**  
RISQUE DE CHOC ÉLECTRIQUE. NE PAS OUVRIRE LE COUVERCLE.  
POUR TOUTE RÉPARATION OU SERVICE, SEULEMENT DES  
CONSEILS D'UN AGENT SPÉCIALISÉ. CONSULTER UN AGENT  
PANNÉAUX PHOTOVOLTAÏQUES SONT MIS EN SERVICE  
À LA LUMIÈRE, IL FOURNIT UNE TENSION ALTERNATIVE.

**WARNING: HIGH VOLTAGE**  
**AVERTISSEMENT: HAUTE TENSION**

**PHOTOVOLTAIC  
AC DISCONNECT**

CAUTION: DO NOT INSTALL  
ADDITIONAL LOADS IN THIS PANEL

**WARNING**  
PV SOURCE CIRCUIT

 **ENPHASE**

**SOLAR PV SYSTEM EQUIPPED  
WITH RAPID SHUTDOWN**

TURN RAPID SHUTDOWN  
SWITCH TO THE  
"OFF" POSITION TO  
SHUT DOWN PV SYSTEM  
AND REDUCE  
SHOCK HAZARD  
IN THE ARRAY



598-03942

**PHOTOVOLTAIC AC DISCONNECT**

MAXIMUM AC OPERATING CURRENT: **1.2/A**  
NOMINAL OPERATING AC VOLTAGE: **240x**

**WARNING**  
**DUAL POWER SUPPLY**  
**SOURCES: UTILITY GRID**  
**AND PV SOLAR**  
**ELECTRIC SYSTEM**

596-03942

**GENERAL DUTY SAFETY SWITCH**  
**INTERRUPTOR DE SEGURIDAD DE SERVICIO GENERAL**  
60 A  
240 Vac / V-

**DANGER / PELIGRO**  
**HAZARD OF ELECTRIC SHOCK, EXPLOSION, OR ARC FLASH**  
**PELIGRO DE DESCARGA ELECTRICA, EXPLOSION O DESTELLO POR ARQUEO**

- Apply appropriate personal protective equipment (PPE) and follow safe electrical work practices. See NFPA 70E.
  - This equipment must only be installed and serviced by qualified electrical personnel.
  - Never operate energized switch with door open. Keep door fastened.
  - Turn off switch before removing or installing fuses or making load side connections.
  - Always use a properly rated voltage sensing device at all line and load fuse clips to confirm switch is off.
  - Turn off power supplying switch before doing any other work on or inside switch.
  - Do not use renewable link fuses in fused switches. Failure to follow these instructions will result in death or serious injury.
  - To lock out switch, place padlock hasp through hole in lockplate and above handle.
- 40275-942-02

**WARNING**  
**ELECTRICAL SHOCK HAZARD**  
**TERMINALS ON THE LINE AND LOAD SIDES MAY BE ENERGIZED IN THE OPEN POSITION**

596-03942

**RAPID SHUTDOWN SWITCH**  
**FOR SOLAR PV SYSTEM**

596-03942

**CAUTION: SOLAR ELECTRIC  
SYSTEM CONNECTED**

**⚠ WARNING**  
**ELECTRICAL SHOCK HAZARD**  
TERMINALS ON THE LINE AND  
LOAD SIDES MAY BE ENERGIZED  
IN THE OPEN POSITION

**⚠ WARNING**  
**DUAL POWER SUPPLY**  
SOURCES: UTILITY GRID  
AND PV SOLAR  
ELECTRIC SYSTEM

**⚠ WARNING**  
THIS EQUIPMENT FED BY  
MULTIPLE SOURCES:  
TOTAL RATING OF ALL OVERCURRENT  
DEVICES EXCLUDING MAIN POWER  
SUPPLY SHALL NOT EXCEED  
CAPACITY OF BUSBAR

**SOLAR PV SYSTEM EQUIPPED  
WITH RAPID SHUTDOWN**

TURN RAPID SHUTDOWN  
SWITCH TO THE "OFF"  
POSITION TO  
SHUT DOWN CONDUCTORS  
OUTSIDE THE ARRAY.  
CONDUCTORS WITHIN  
ARRAY REMAIN  
ENERGIZED IN SUNLIGHT







T  
IS  
PH  
506-03942

CONTAINS FCC ID: R7PEG1R156    CONTAINS IC: 5294A-EG1R156  
Landis+Gyr **GRIDSTREAM RF**  
90BC8CE4  
MODULE MODEL: CB Integrates FOCUS A.14    ZigBee® Certified product



Type **FOCUS AXRe-SD**  
FORM 25 CL200 240V 3W 60Hz TA=30 Kh 7.2

**CENTRAL EMC**

934 0527  
166 769 993  
Landis+Gyr



**⚠ WARNING**

THIS SERVICE METER IS ALSO SERVED BY A PHOTOVOLTAIC SYSTEM

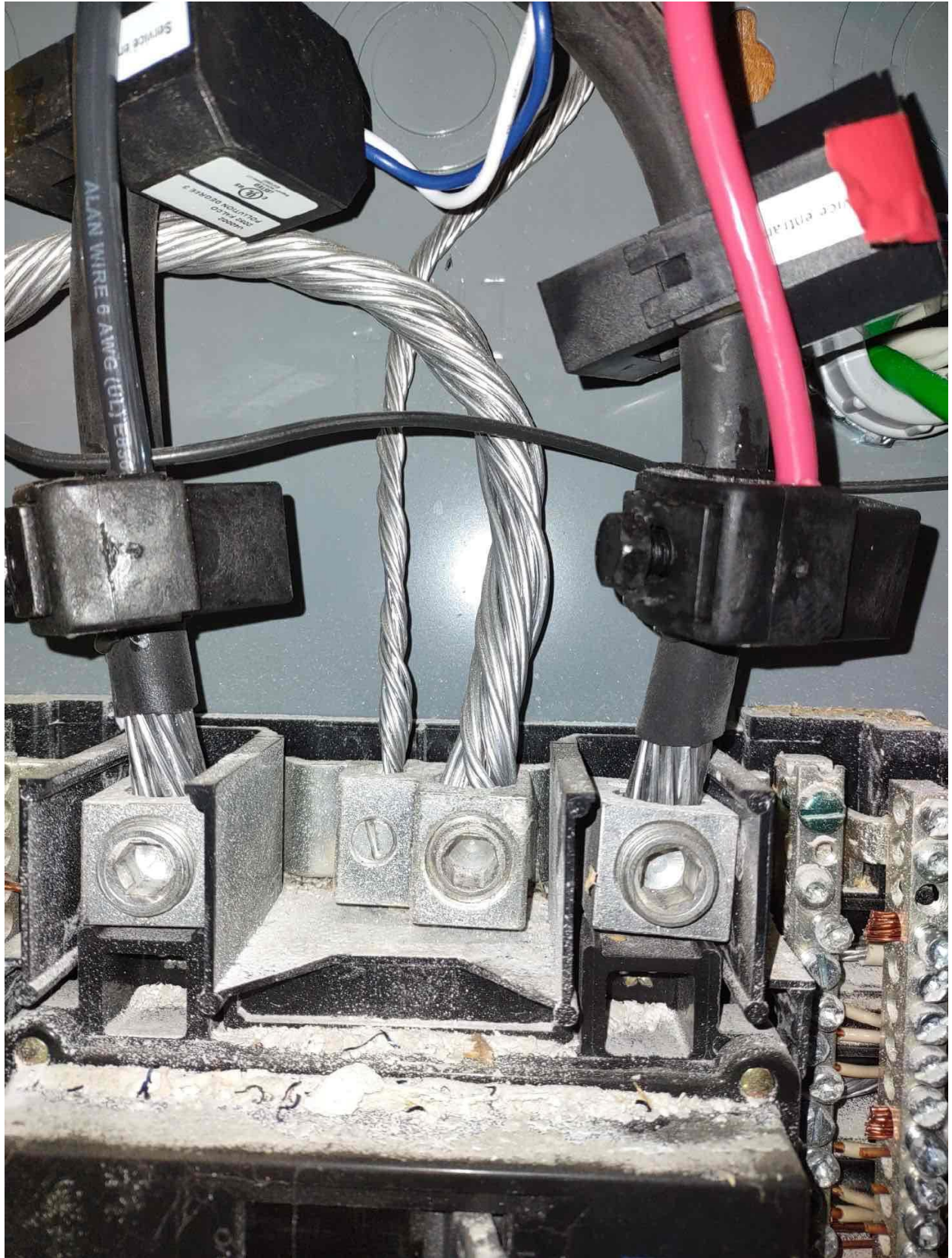
GRIDSTREAM RF  
90BC8CE4

Type FOCUS AXRe-SD  
FORM 75 CL200 240V 3W 60HZ TA=30 KH 7.2

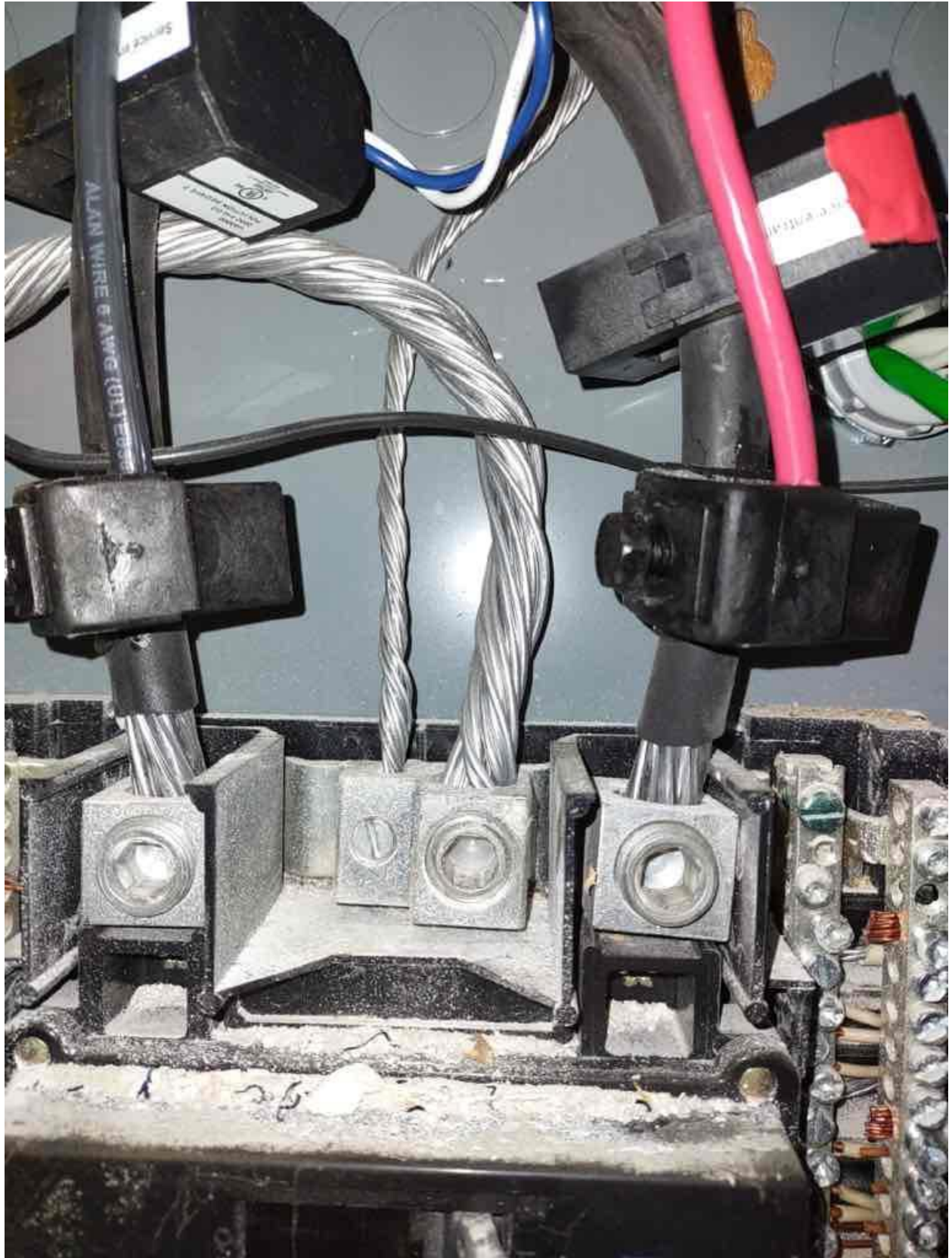
**CENTRAL EMC**

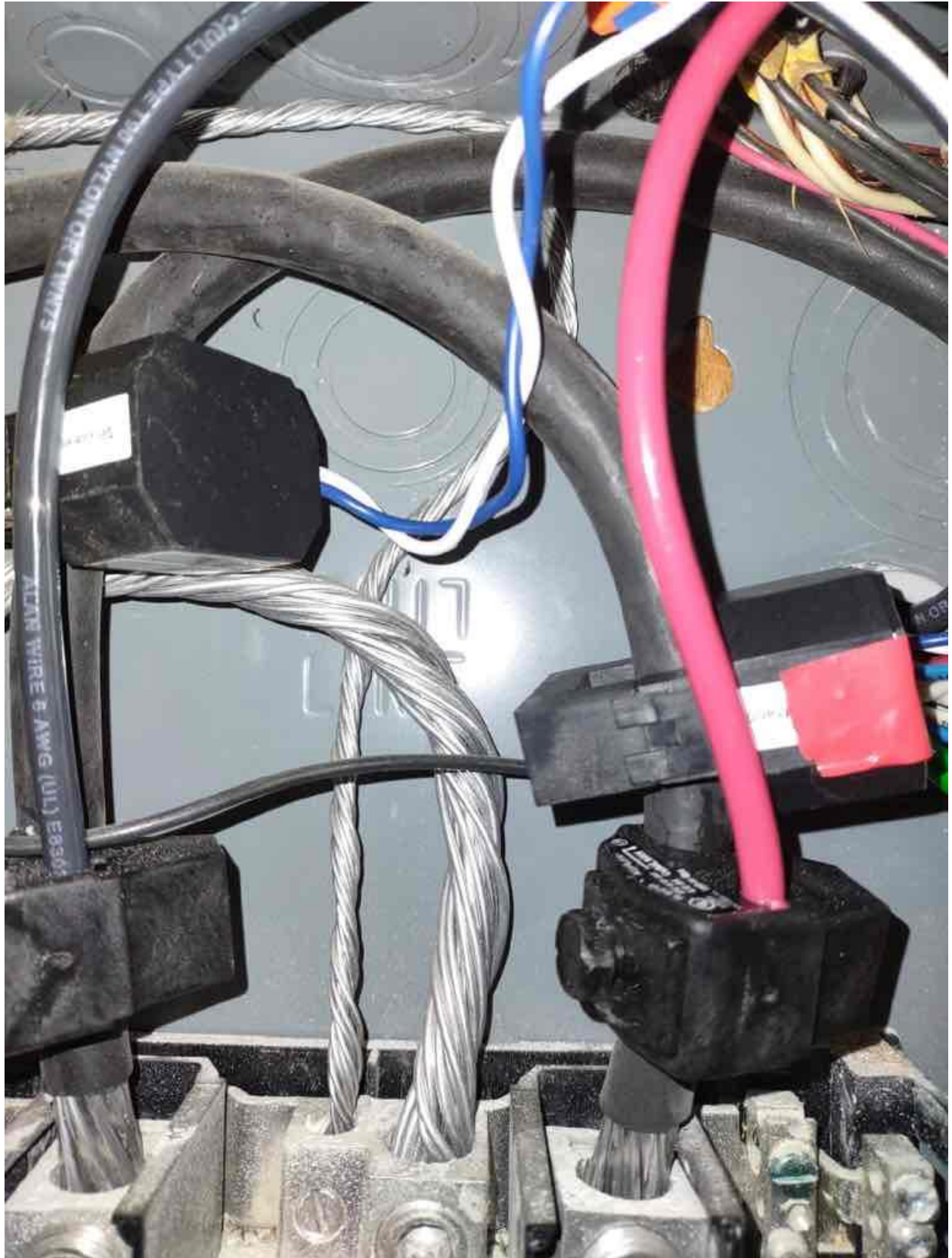
166 769 993  
904  
021  
Lan: +Cyt

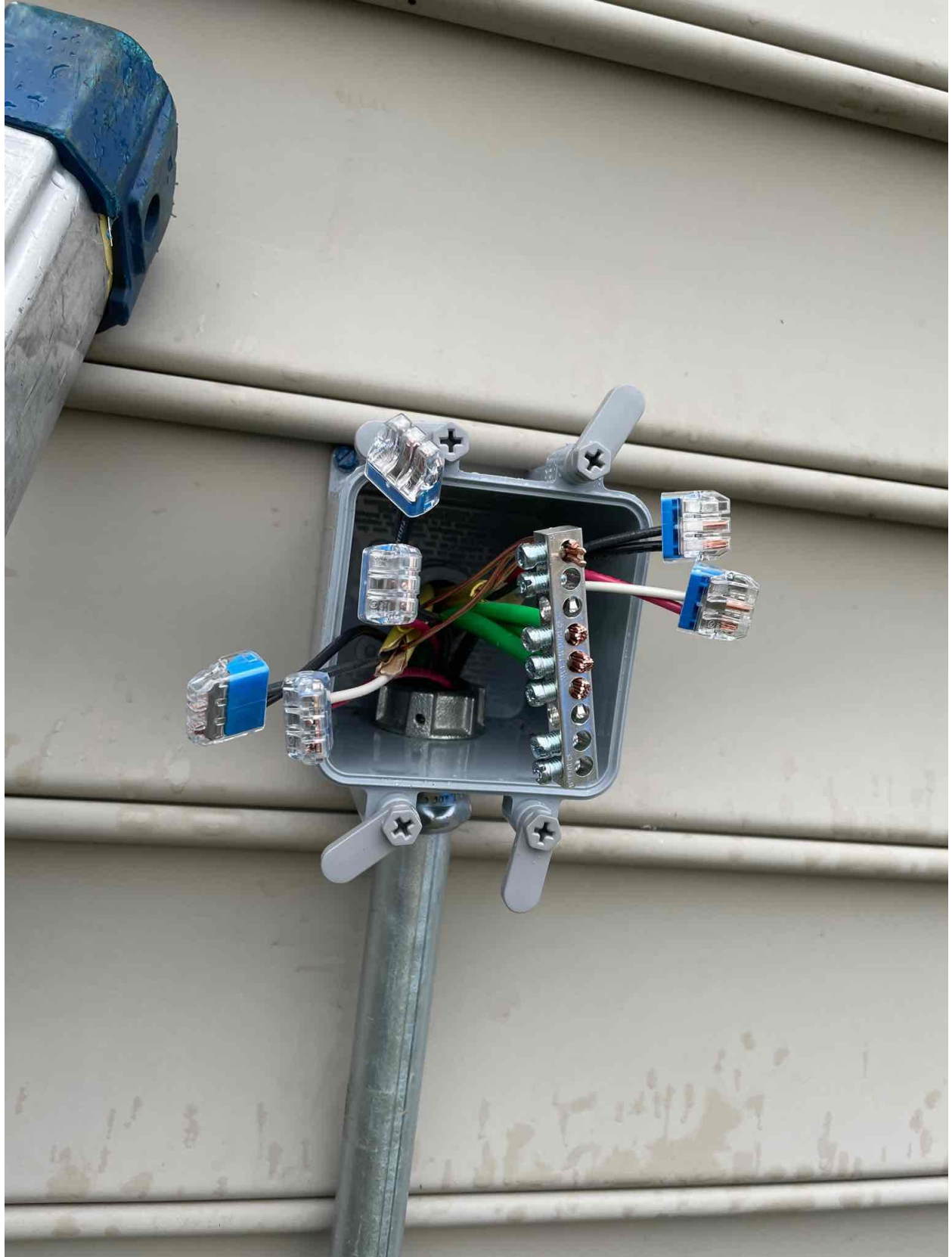
**⚠ WARNING**  
HAZARD OF ELECTRICAL SHOCK OR BURNAL  
DO NOT SERVICE THIS EQUIPMENT  
UNTIL YOU HAVE BEEN ADVISED BY  
YOUR SERVICE PROVIDER





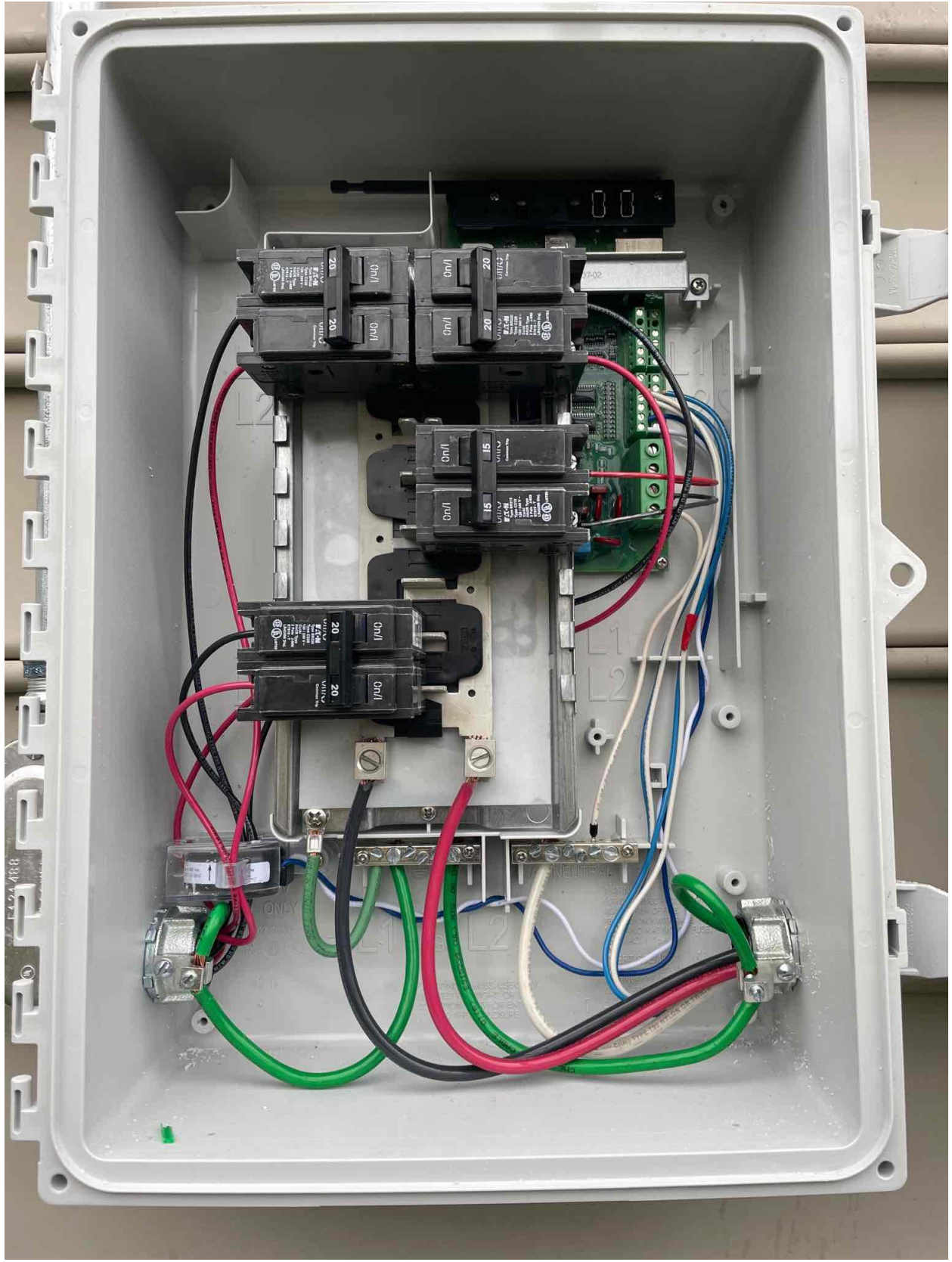




















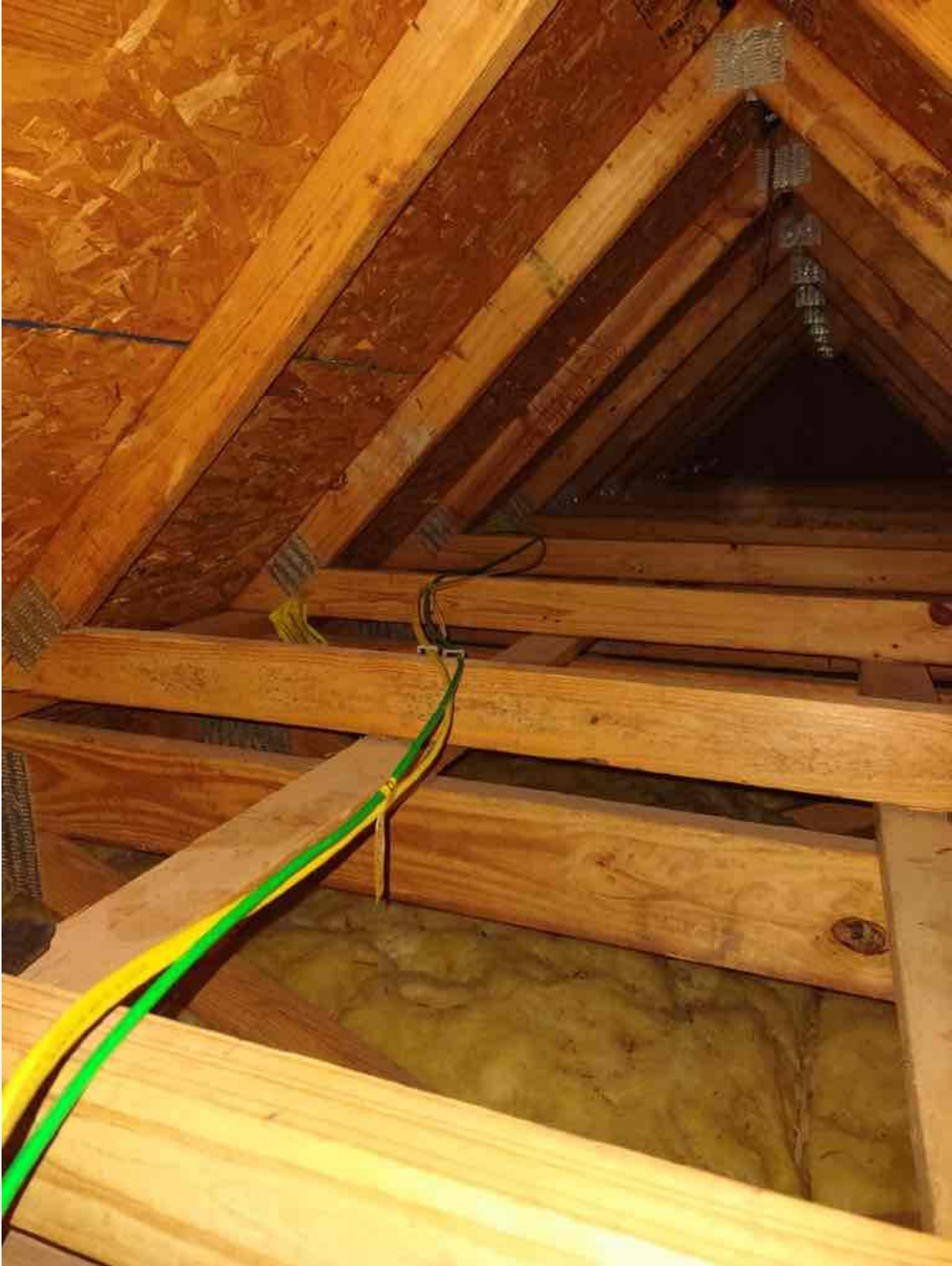




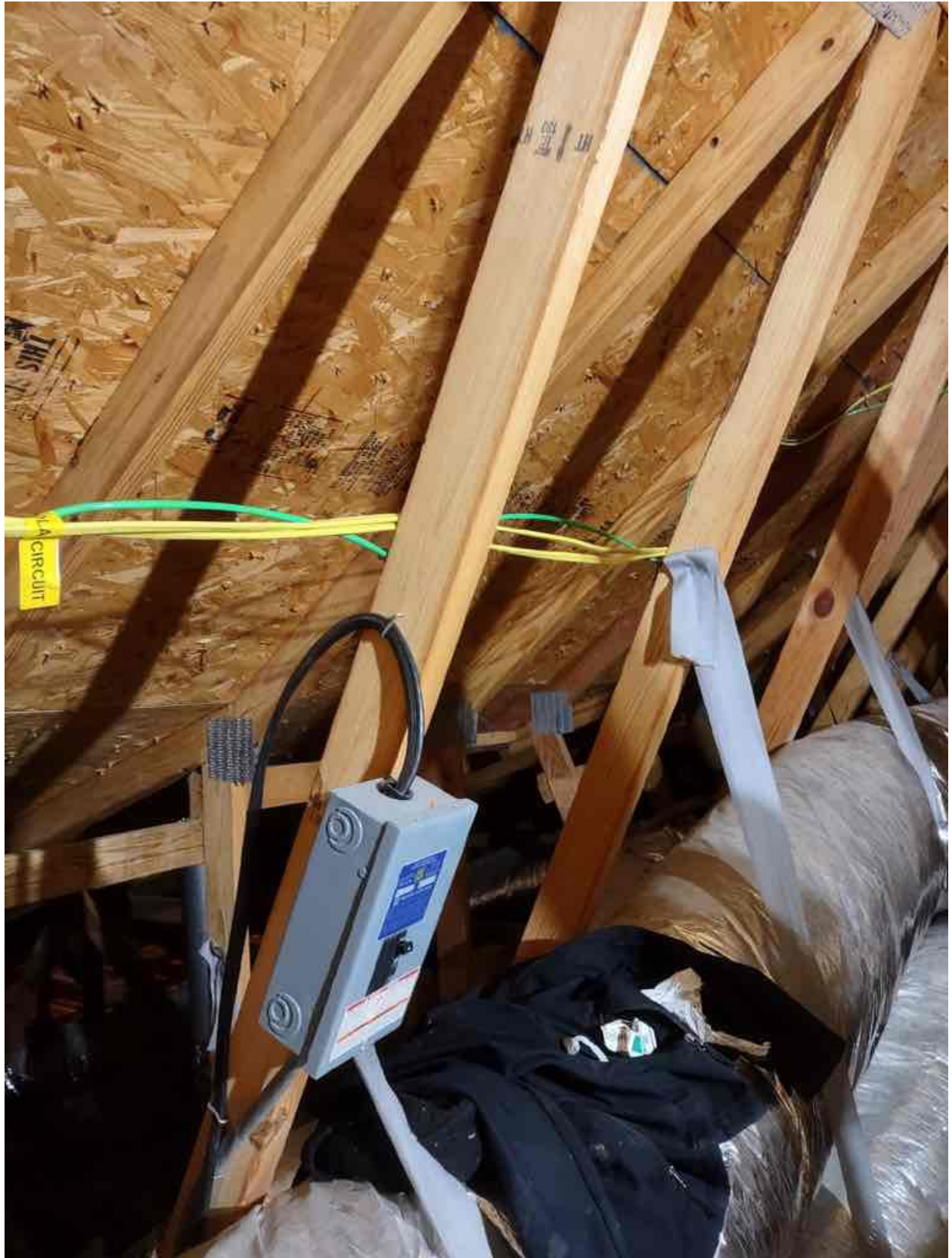






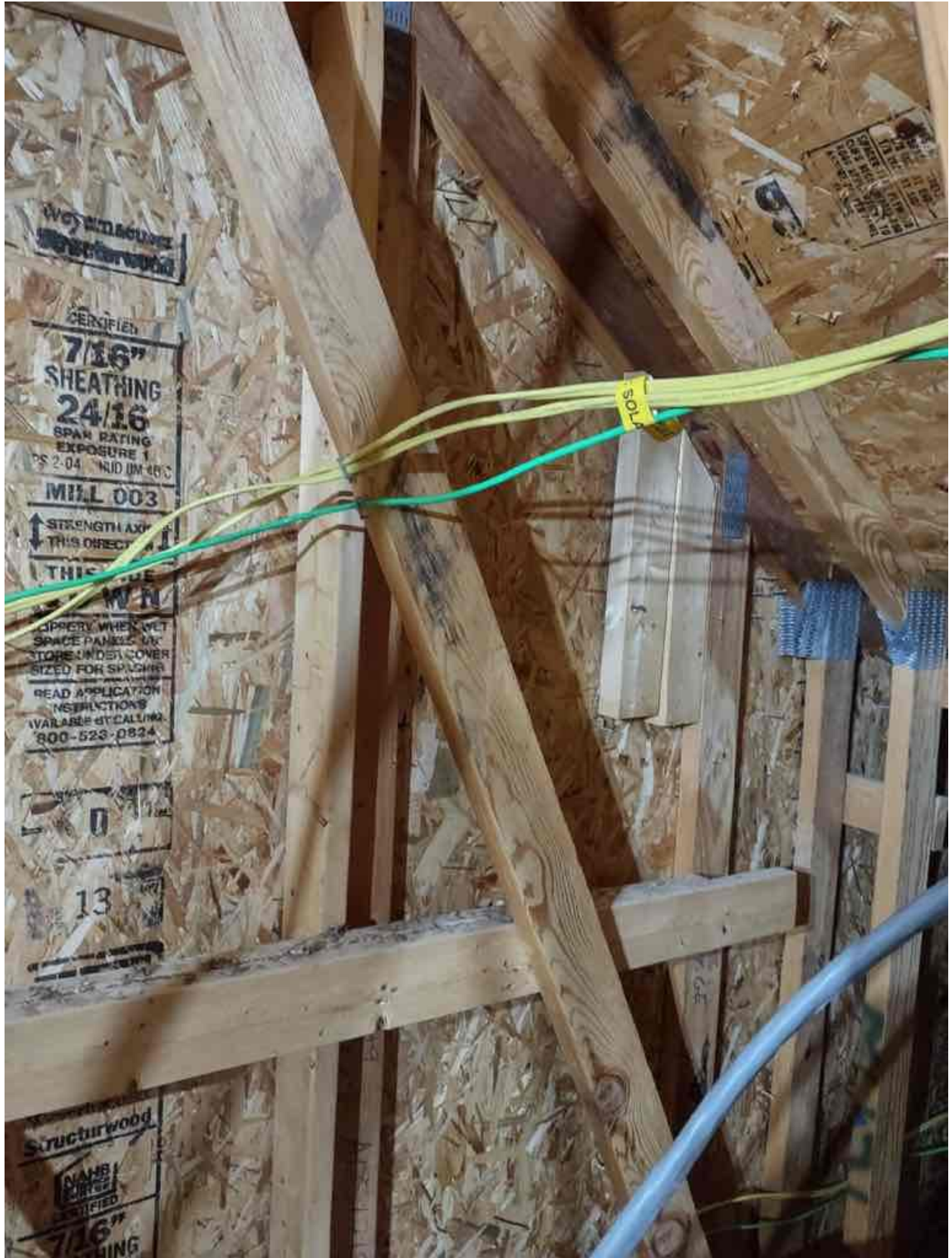












STRUCTURWOOD

CERTIFIED  
**7/16" SHEATHING**  
**24/16**  
SPAN RATING  
EXPOSURE 1  
PS 2-04 NUD IM 40 C  
**MILL 003**  
↑ STRENGTH AXIS  
THIS DIRECTION  
THIS SIDE  
W N  
SLIPPERY WHEN WET  
SPACE PANELS UN-  
DER STORE UNDER COVER  
SIZED FOR SPACING  
READ APPLICATION  
INSTRUCTIONS  
AVAILABLE BY CALLING  
800-523-0824

0

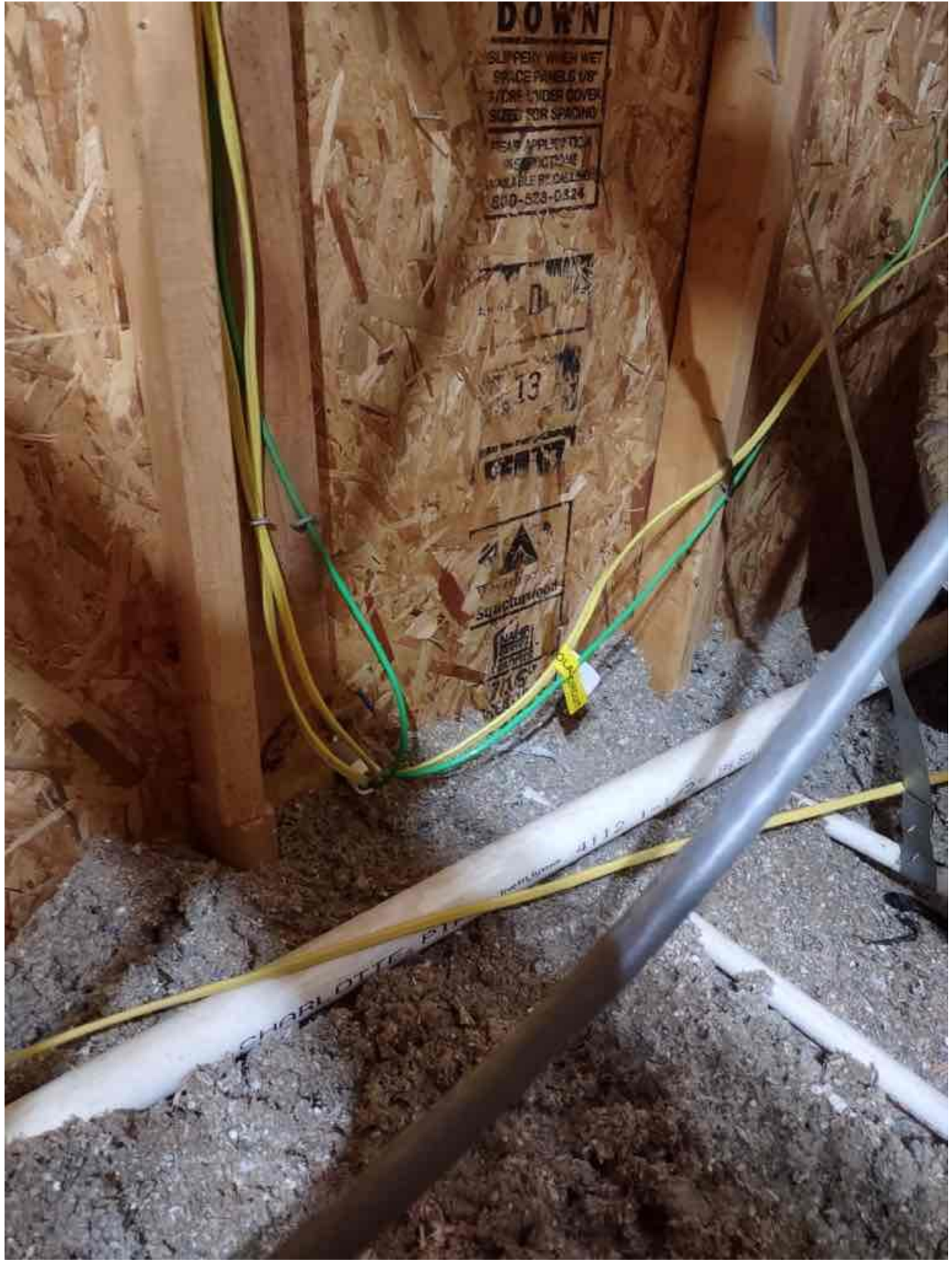
13

Structurwood

MADE IN THE USA  
CERTIFIED  
**7/16" SHEATHING**

TOS





**DOWN**

SLIPPERY WHEN WET  
SPACE PANELS OR  
3/4" OR 1" WIDER COVER  
SIZES FOR SPACING

BEAD APPLICATION  
IN CONTACT WITH  
AVAILABLE BY CALLING  
800-528-0824

13

13

13

13

13

13

13

13

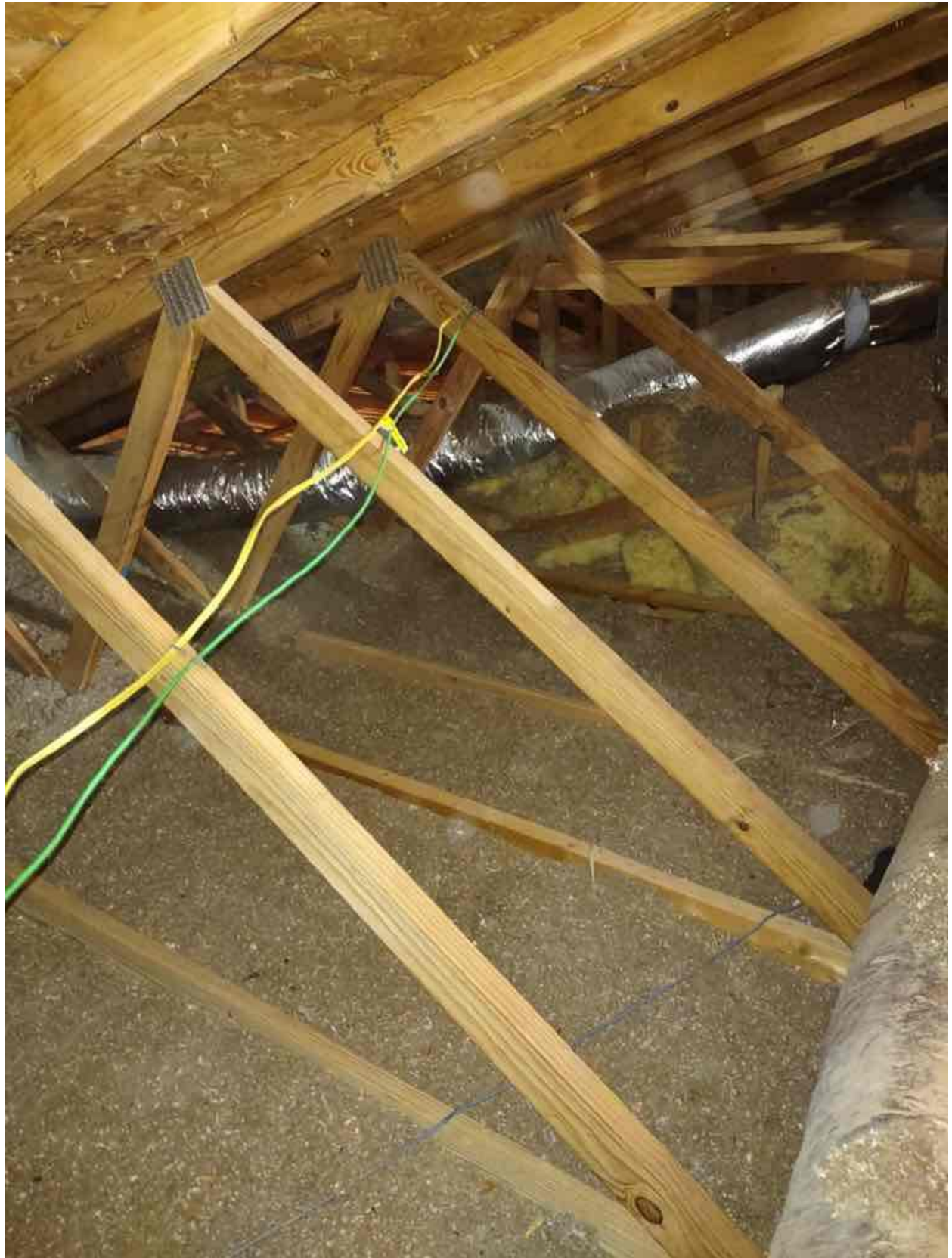
13

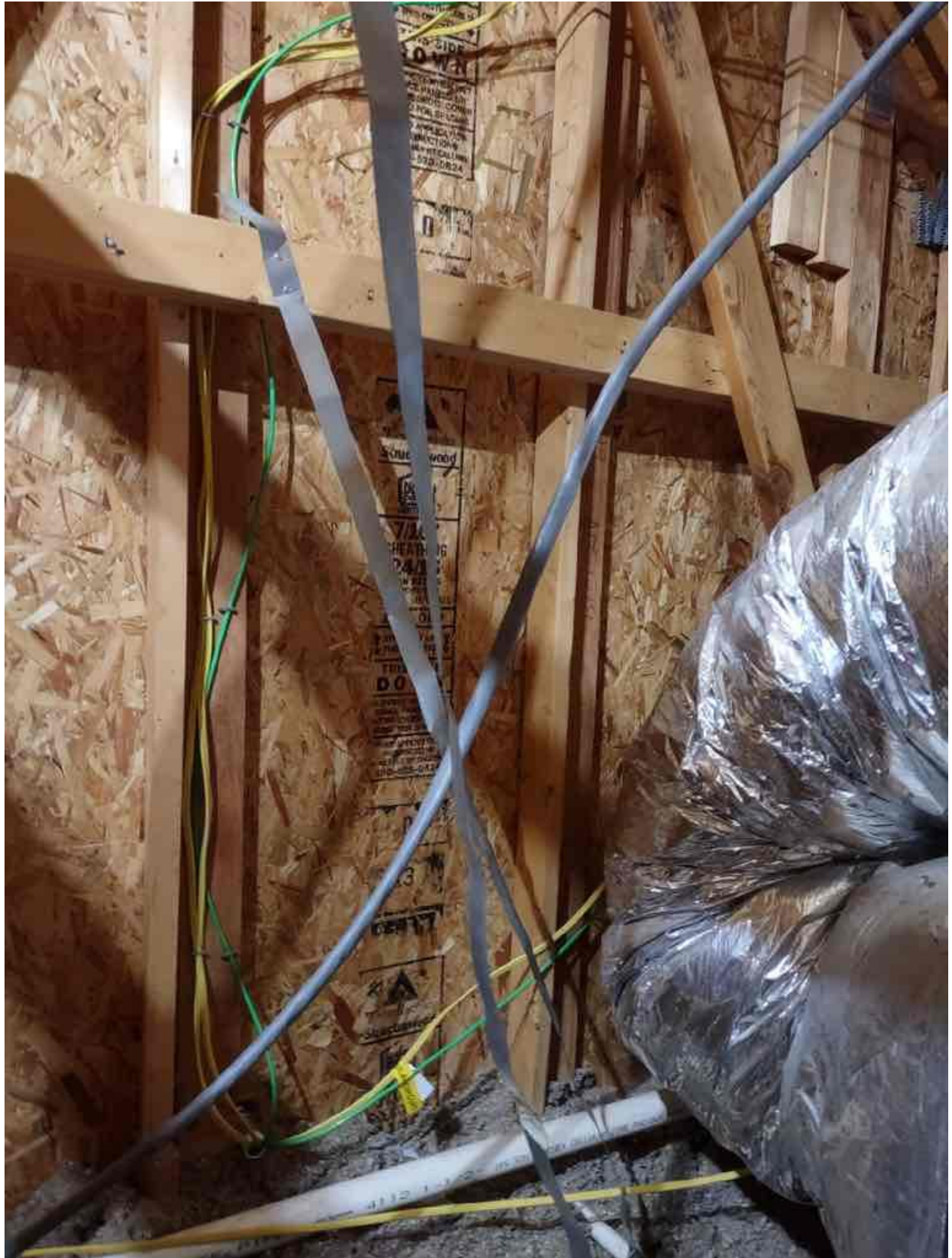
13

13

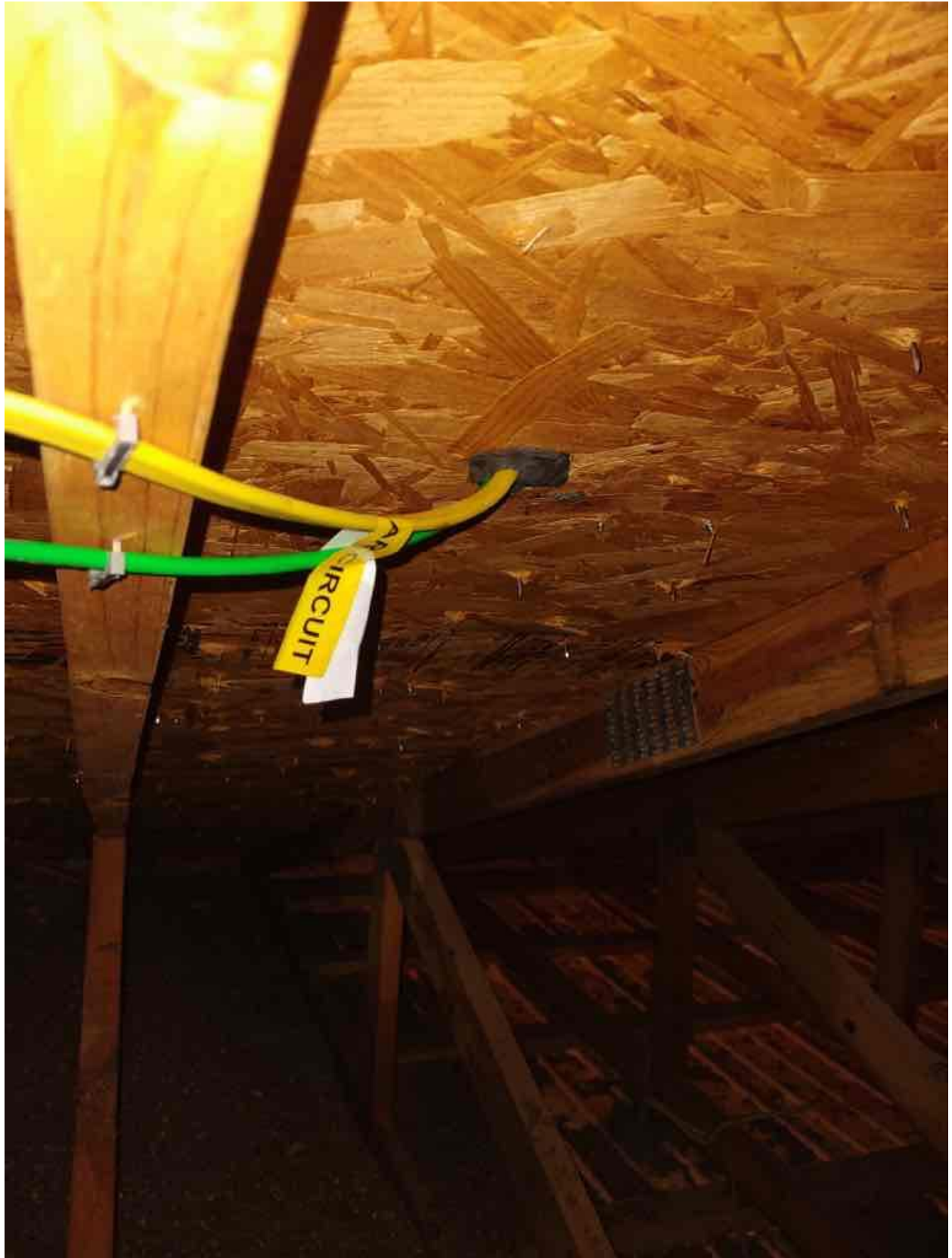
13



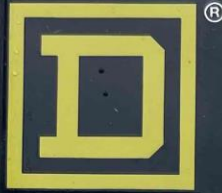












SQUARE D®

**GENERAL DUTY  
SAFETY SWITCH  
INTERRUPTOR DE  
SEGURIDAD DE  
SERVICIO GENERAL**  
60 A  
240 Vac / V~



**⚠ DANGER / PELIGRO**

**HAZARD OF ELECTRIC SHOCK, EXPLOSION, OR ARC FLASH  
PELIGRO DE DESCARGA ELÉCTRICA, EXPLOSIÓN O  
DESTELLO POR ARQUEO**

- Apply appropriate personal protective equipment (PPE) and follow safe electrical work practices. See NFPA 70E.
- This equipment must only be installed and serviced by qualified electrical personnel.
- Never operate energized switch with door open. Keep door fastened.
- Turn off switch before removing or installing fuses or making load side connections.
- Always use a properly rated voltage sensing device at all line and load fuse clips to confirm switch is off.
- Turn off power supplying switch before doing any other work on or inside switch.
- Do not use renewable link fuses in fused switches.
- Utilice equipo de protección personal (EPP) apropiado y siga las prácticas de seguridad eléctrica establecidas por su Compañía (consulte la norma NFPA 70E).
- Solamente el personal eléctrico especializado deberá instalar y prestar servicio de mantenimiento a este equipo.
- Nunca haga funcionar el interruptor con la puerta abierta cuando esté energizado. Mantenga la puerta asegurada.
- Desenergice el interruptor antes de extraer o instalar fusibles o de hacer conexiones en el lado de carga.
- Siempre utilice un dispositivo de tensión nominal adecuado en los clips para fusibles de los lados de carga y línea para confirmar la desenergización del interruptor.
- Desenergice el interruptor antes de realizar cualquier otro trabajo en el interruptor.
- No utilice fusibles de cinta renovables en los interruptores de fusible.

**Failure to follow these instructions  
will result in death or serious injury.**

**El incumplimiento de estas precauciones  
podrá causar la muerte o lesiones serias.**

To lock out switch, place padlock hasp through hole in lockplate and above handle.

40275-942-02

Para bloquear el interruptor, la aldaba del candado debe pasar por el agujero en la placa de inmovilización y por encima de la manija.