

**EATON®**

General Duty Safety Switch  
Interrupteur de sécurité à usage général  
Interruptor de seguridad de servicio general

30 A, 240 V~, 60 Hz

Complete ratings inside  
Valeurs nominales complètes à l'intérieur  
Información completa de capacidades en el interior

Further instructions inside  
Autres instructions à l'intérieur  
Instrucciones adicionales en el interior

Made in U.S.A. / Fabriqué aux É.-U. / Hecho en E.U.A.

**⚠ DANGER**

**HAZARDOUS VOLTAGE. WILL CAUSE SEVERE INJURY OR DEATH.**

- Never operate switch with cover open.
- Turn OFF power ahead of switch before doing any work inside. Replace all parts. Close cover before turning power ON.

**TENSION DANGEREUSE. PEUT CAUSER DES BLESSURES GRAVES OU LA MORT.**

- Ne jamais manœuvrer l'interrupteur lorsque le couvercle est ouvert.
- Couper l'alimentation en amont de l'interrupteur avant toute intervention. Remplacer les pièces. Fermer le couvercle avant de remettre sous tension.

**⚠ PELIGRO**

**VOLTAJE PELIGROSO. PUEDE CAUSAR HERIDAS SEVERAS O LA MUERTE.**

- Nunca opere el interruptor con la cubierta abierta.
- Desconectar la alimentación del interruptor antes de trabajar dentro del mismo. Reemplazar todas las partes. Cerrar la cubierta antes de energizar el interruptor.

30-43079



**WARNING**  
ELECTRICAL SHOCK HAZARD  
DO NOT TOUCH TERMINALS. TERMINALS ON BOTH LINE AND LOAD SIDE MAY BE ENERGIZED IN THE OPEN POSITION

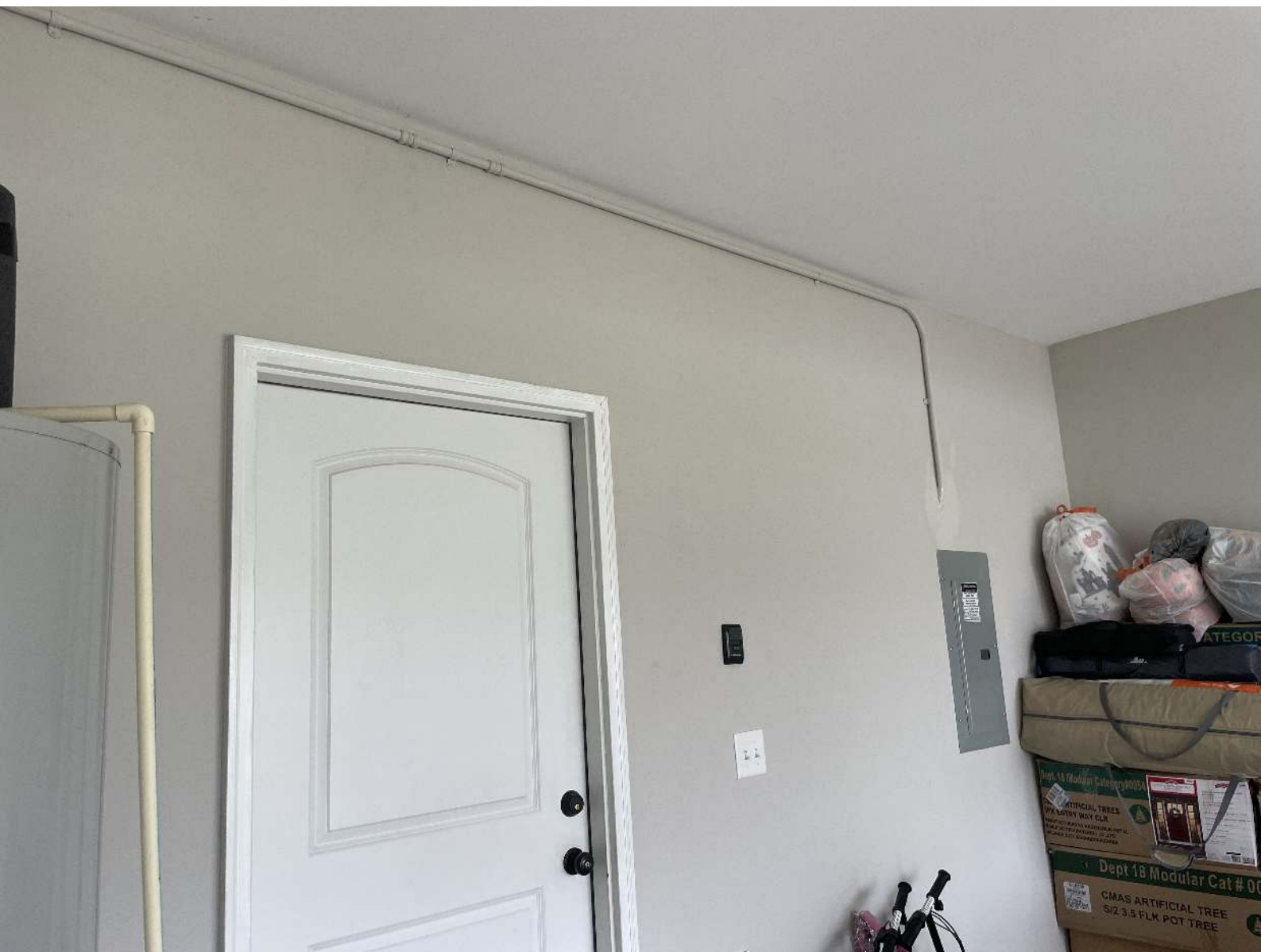
**PHOTOVOLTAIC SYSTEM  
UTILITY DISCONNECT SWITCH**

**PHOTOVOLTAIC AC DISCONNECT**  
MAXIMUM AC OPERATING CURRENT : ~~15~~ **30** A  
MAXIMUM AC OPERATING VOLTAGE : 240V

ON  
I

OFF  
O





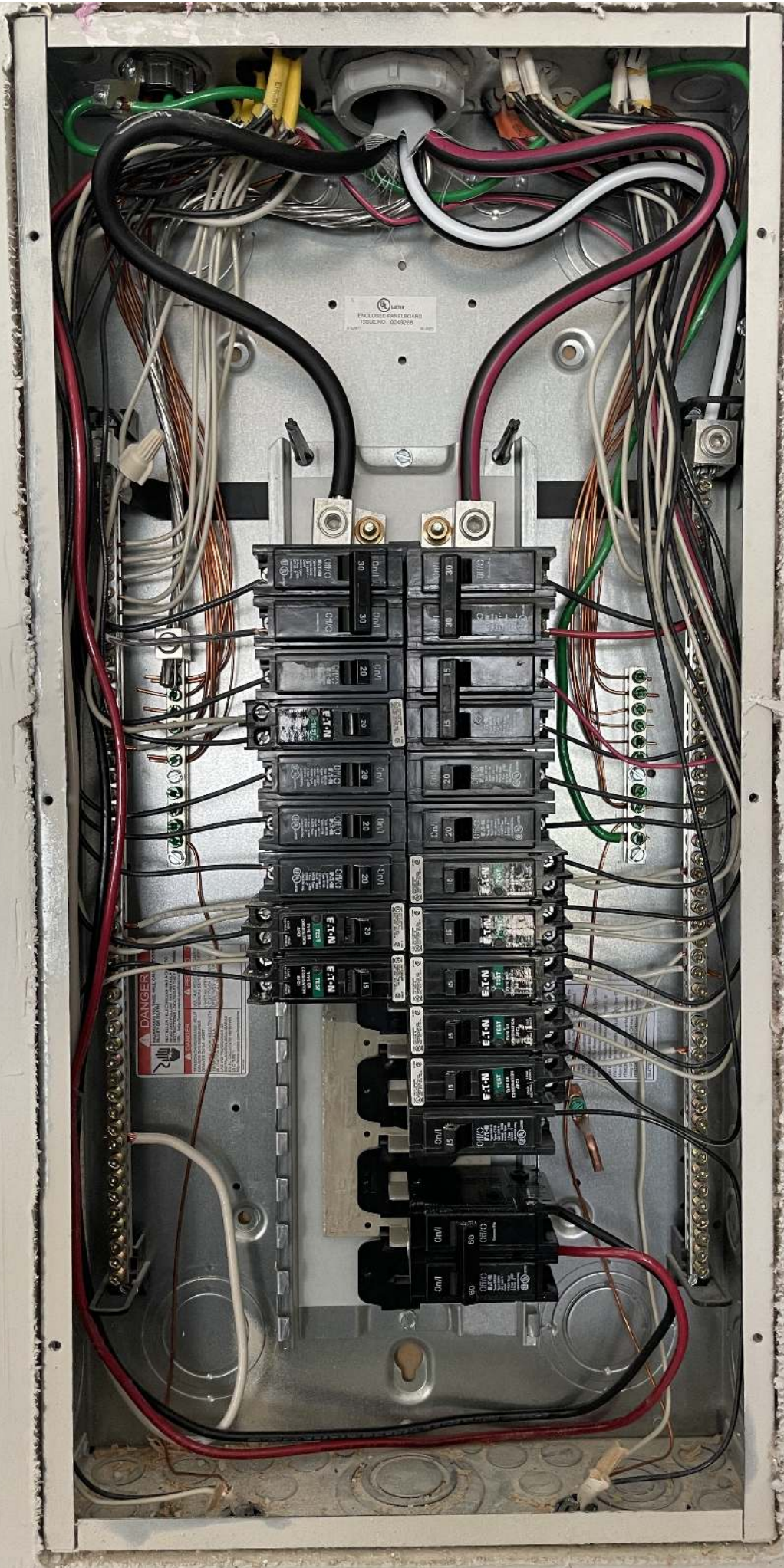


67

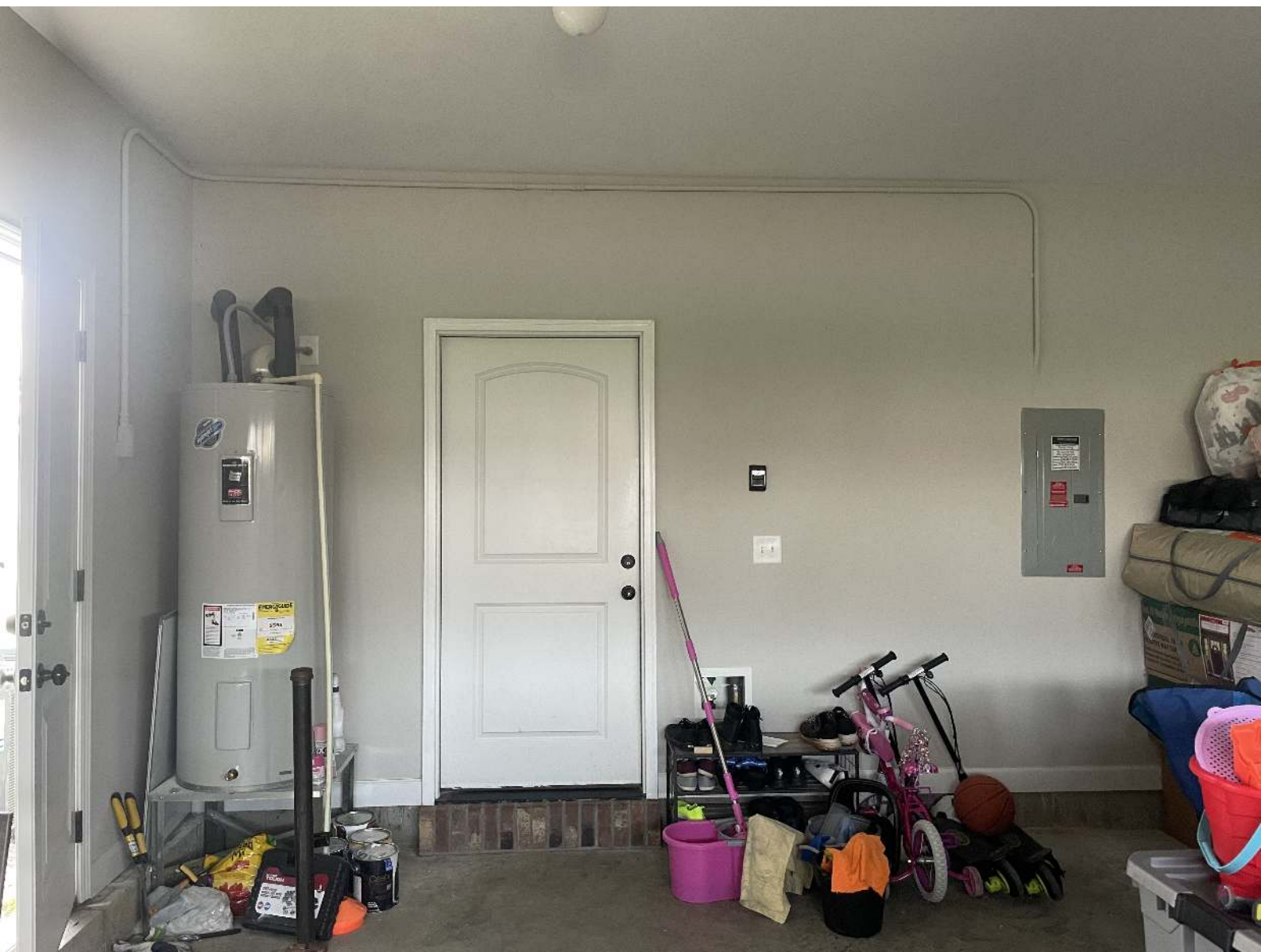
CAUTION CAUTION C

















Everest Solar Systems, LLC  
17200 CR 44-X, Struct Set, Mill  
MD

E467724





B Plugs

A Second Floor

B lights

A Outside Plugs

B

A

B

A P.V. Solar

B

A

B





202102024692



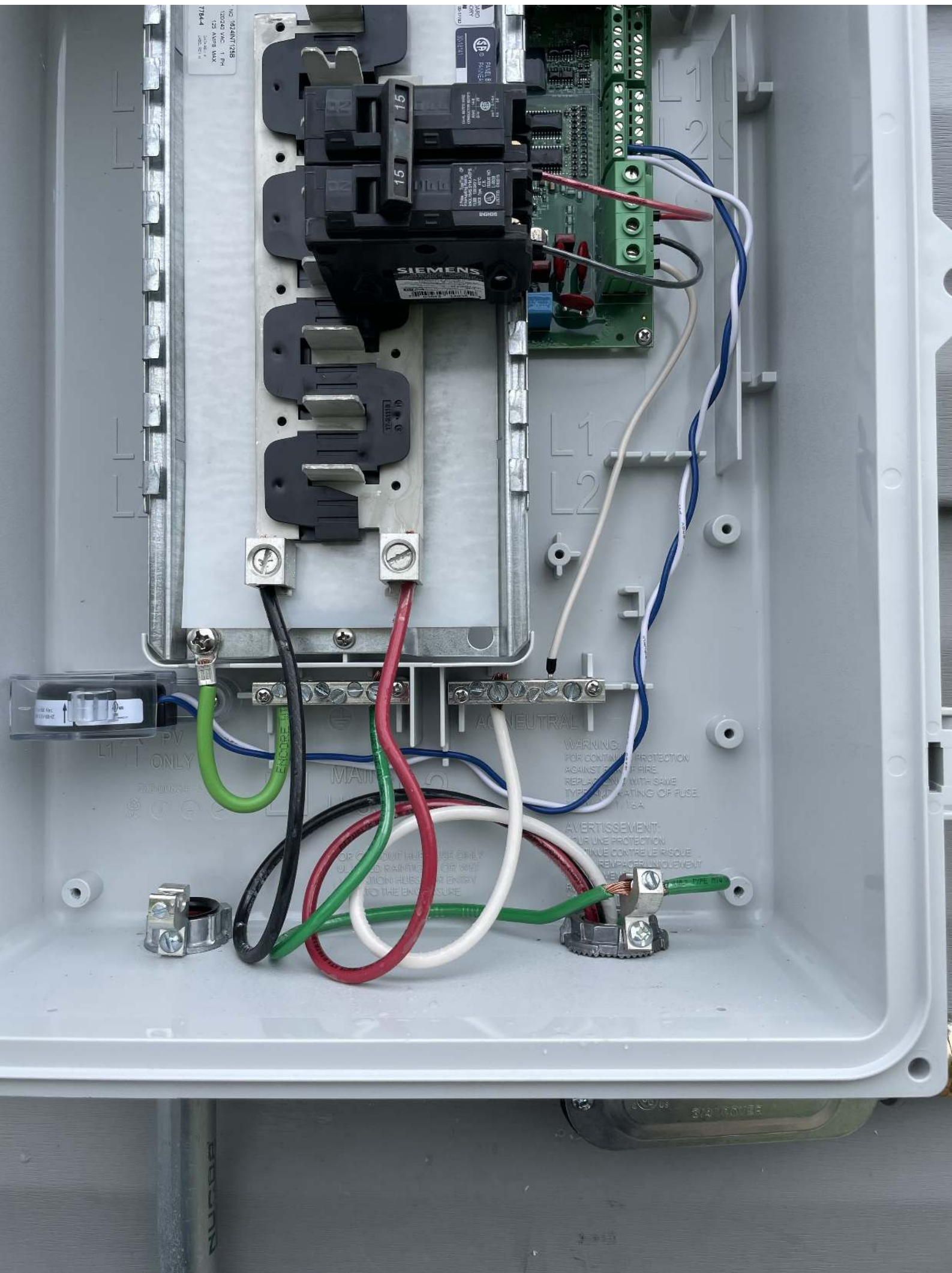
883-00852 06

202102024692

IQ7PLUS-72-2-US







NO. 1024INTZ8  
120/240 VAC, 1 PH  
125 AMP, MAX.  
775-4

SIEMENS  
15  
15  
15  
15

GREEN TERMINAL BLOCK  
WIRING

L1  
L2

AC NEUTRAL

WARNING  
FOR CONTINUED PROTECTION  
AGAINST RISK OF FIRE  
REPLACE WITH SAME  
TYPE AND RATING OF FUSE

AVERTISSEMENT  
POUR UNE PROTECTION  
CONTINUE CONTRE LE RISQUE  
REMPORTEZ UNiquement  
UN FUSIBLE DU MÊME  
TYPE ET DE LA MÊME  
CAPACITÉ

ONLY

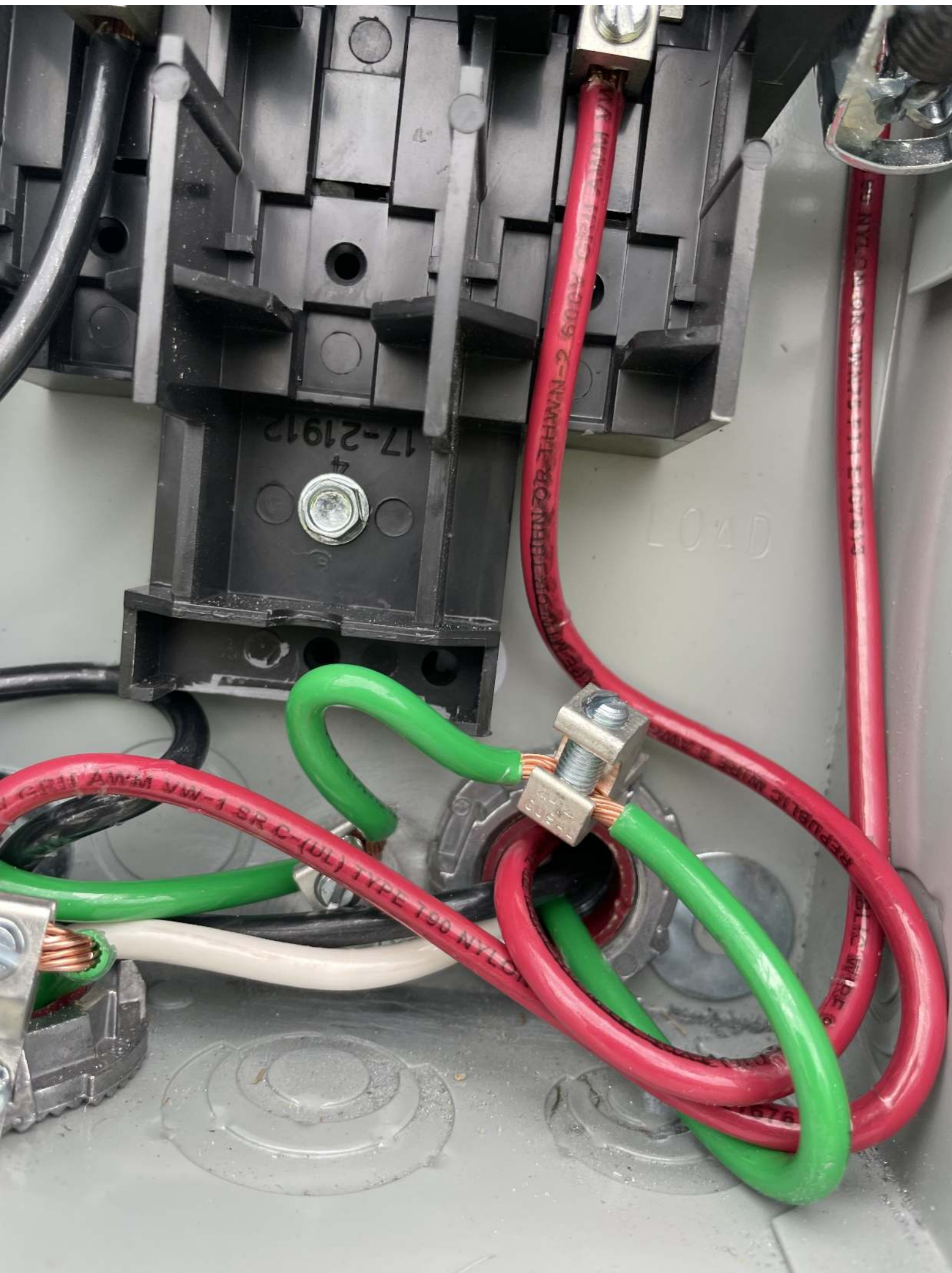
FOR CONDUIT USE ONLY  
DO NOT REMOVE OR WET  
DO NOT ALLOW FLUID ENTRY  
TO THE ENCLOSURE

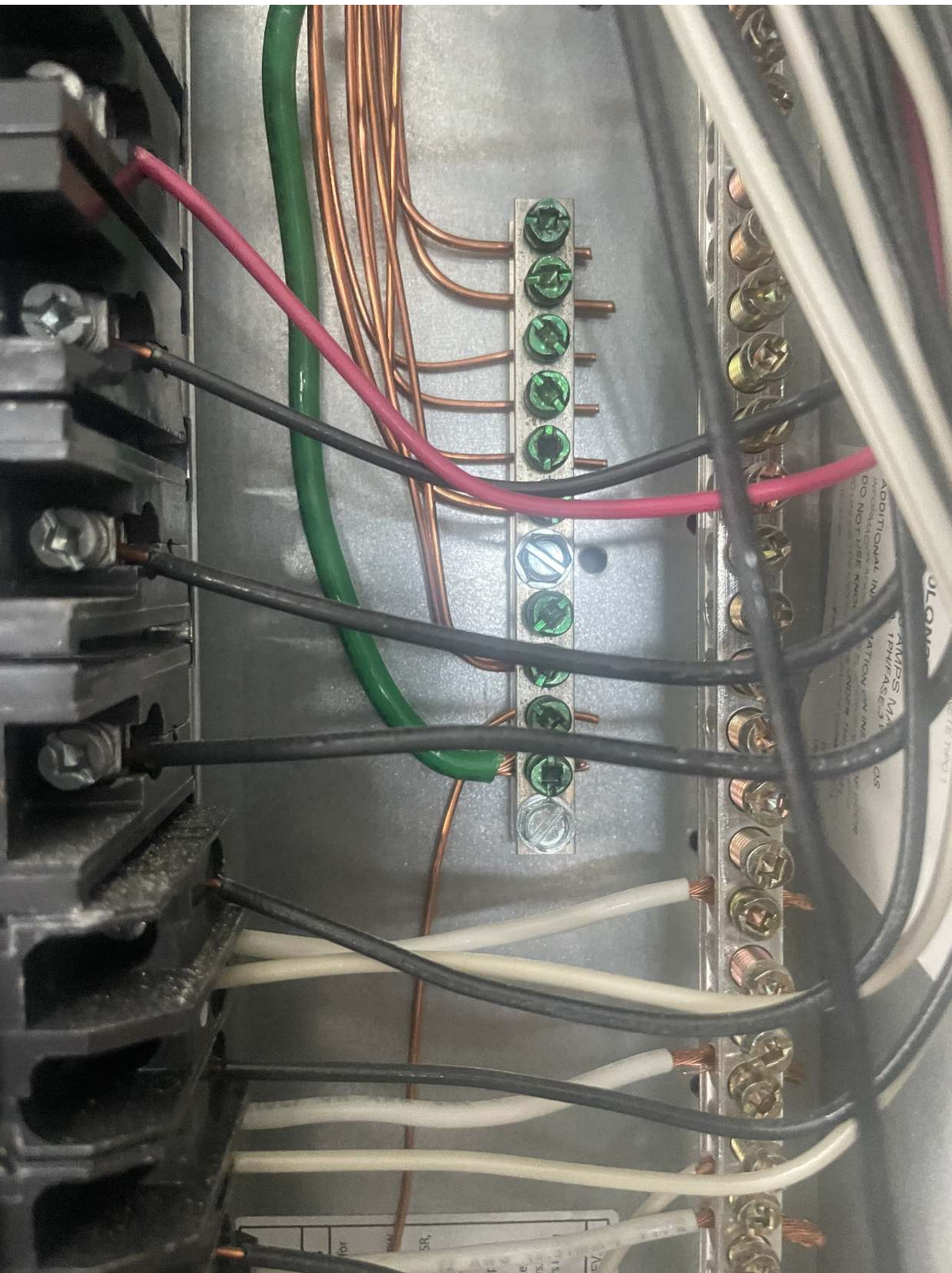
TYPE TN

COVER









ADDITIONAL IN  
DO NOT USE NMC

AMP'S MA  
PHIFASER 3.1  
ATION EV IN  
ANDER TR  
OS

OLONG

for SR, EV



883-00852 06

202102024251

IQ7PLUS-72-2-US





ENPHASE  
SOLAR PV SYSTEM  
EQUIPPED WITH  
SAFETY SHUTDOWN

EATON

Electrical box

Small metal box

A/C Unit



E-T-N TEST 15

E-T-N TEST 15 TYPE BR COMBINATION AFCI

A Bonus  
B Plug B

E-T-N TEST 15 TYPE BR COMBINATION AFCI

A Small  
B Bed  
Plug

E-T-N TEST 15 TYPE BR COMBINATION AFCI

A Second  
B Floor  
lights

On/Off 15 WATAM

A Outside  
B Plug

On/Off 60 WATAM

A  
B

On/Off 60 WATAM

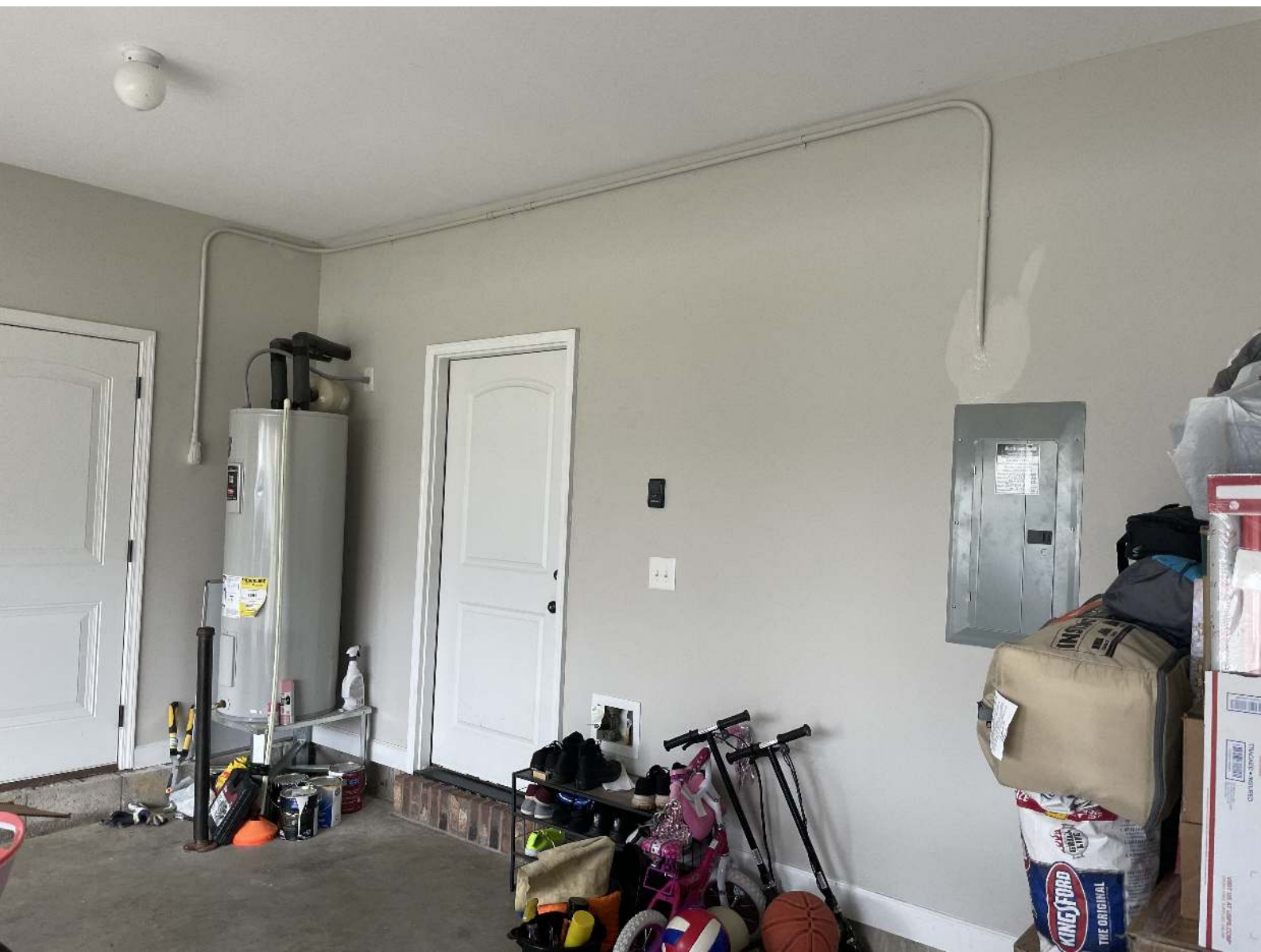
A P.V.  
B Solar

A  
B

**CAUTION**  
PHOTOVOLTAIC SYSTEM  
CIRCUIT IS BACKFED

**PV SOLAR BREAKER**  
DO NOT RELOCATE THIS  
OVERCURRENT DEVICE

**"WARNING"**  
POWER SOURCE  
OUTPUT CONNECTION  
DO NOT RELOCATE THIS  
OVERCURRENT DEVICE





SUITABLE  
FOR WET  
LOCATIONS

FOR RAIN TIGHTNESS  
CLOSURE PLUGS ARE  
TO BE SEALED WITH  
A SILICONE SEALING  
COMPOUND

INDIA



2

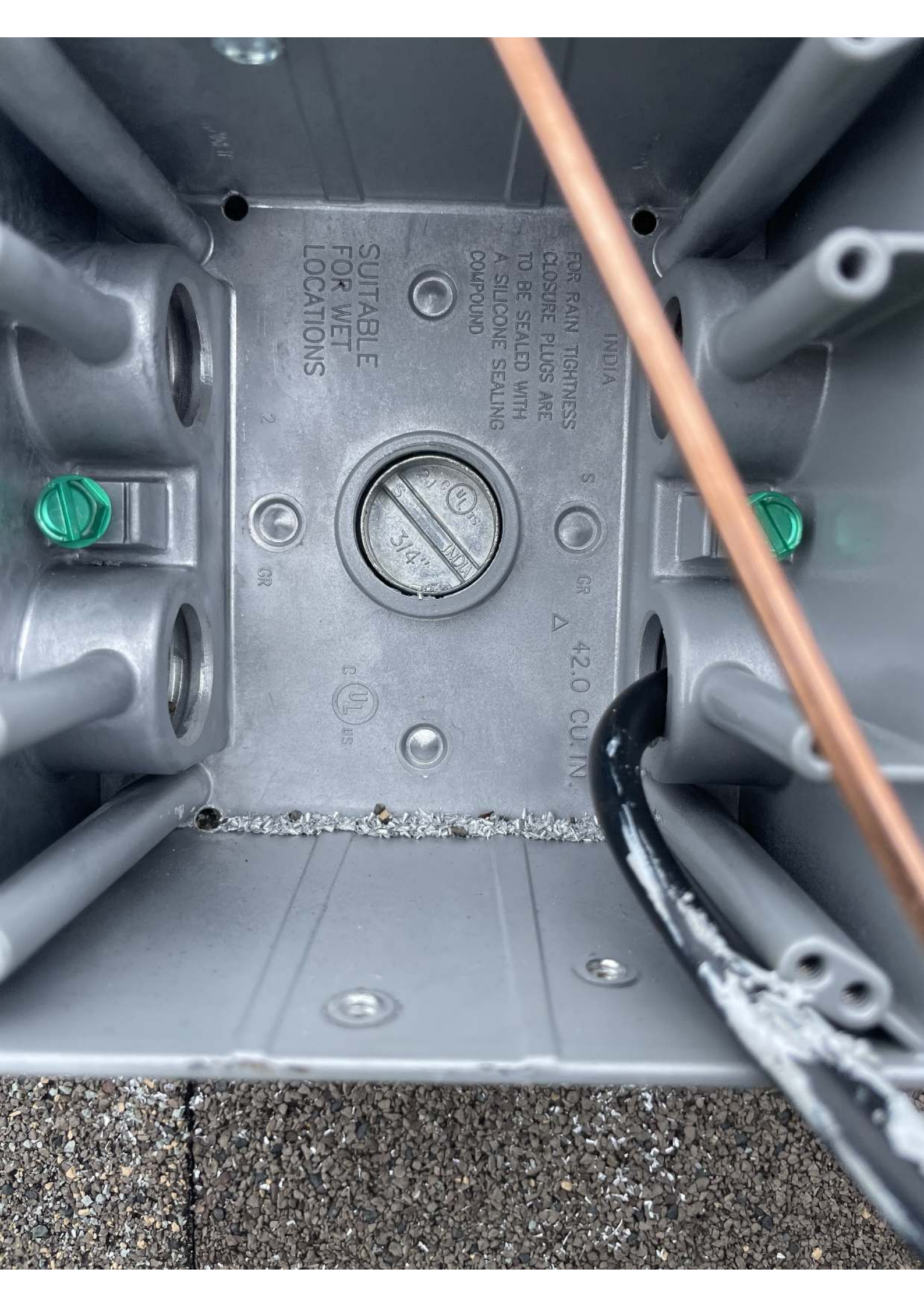
GR

S

GR



42.0 CU. IN.



Team 9  
an Ayala  
1847 8/4/21  
Folly Ct. Linden

+1

035  
202051077340  
202102023330  
202102023789  
202102025216  
202102024251

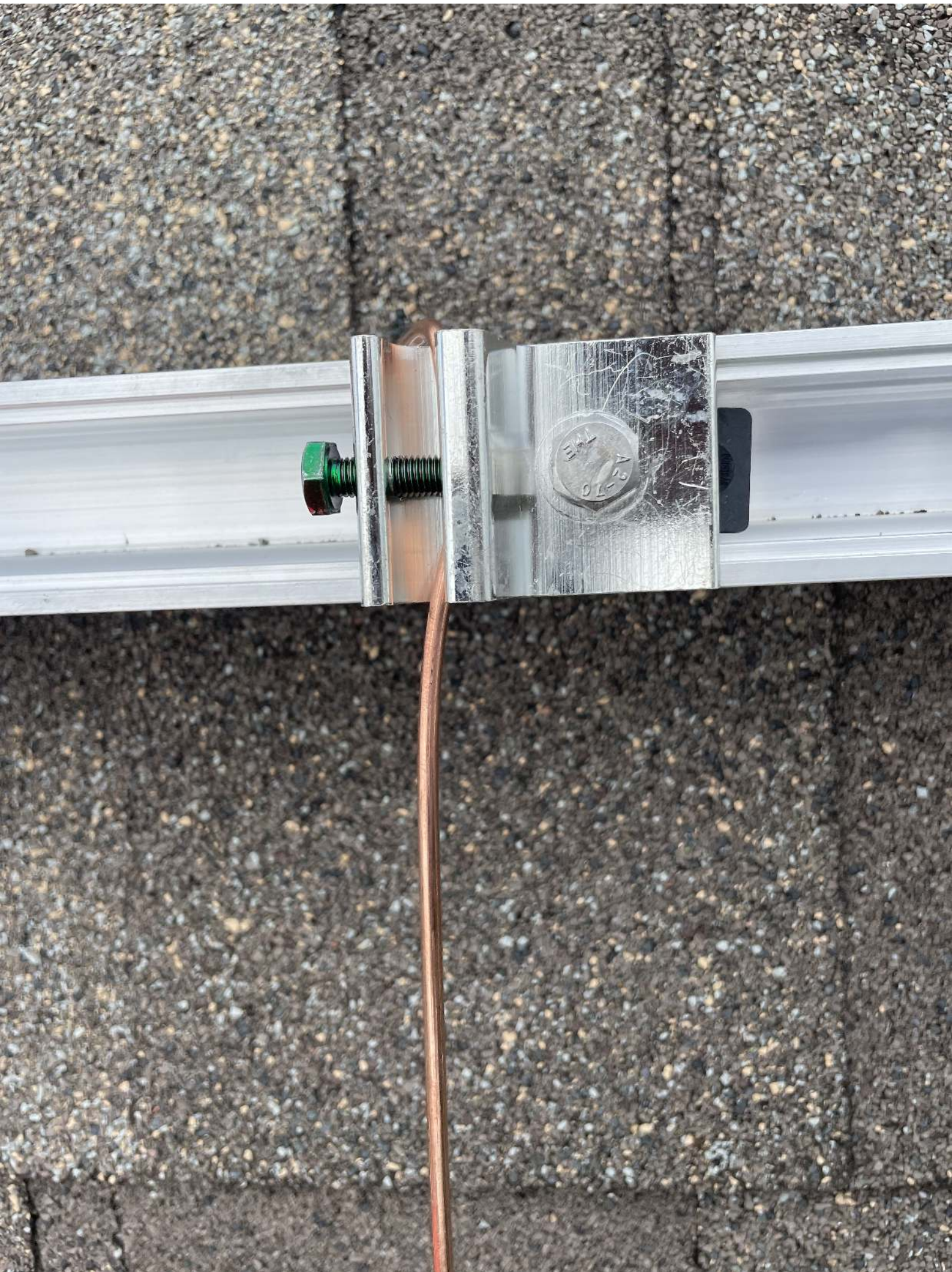
+2

202102025458  
202102024692  
202105024666  
202105023222  
202102024725

202102023832  
202102023974  
202102024755  
202102023841  
202051079661  
202051079788

COAST





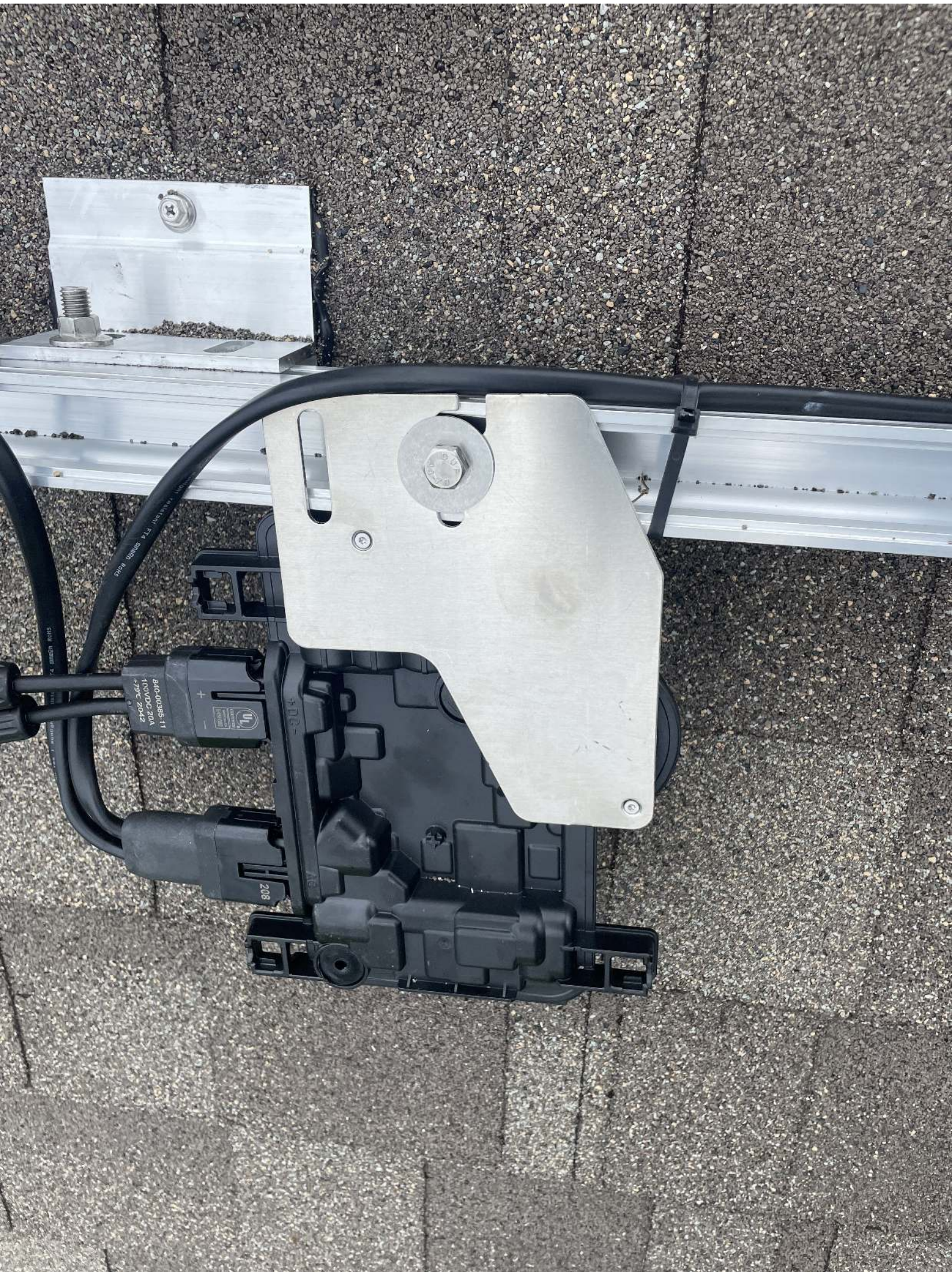






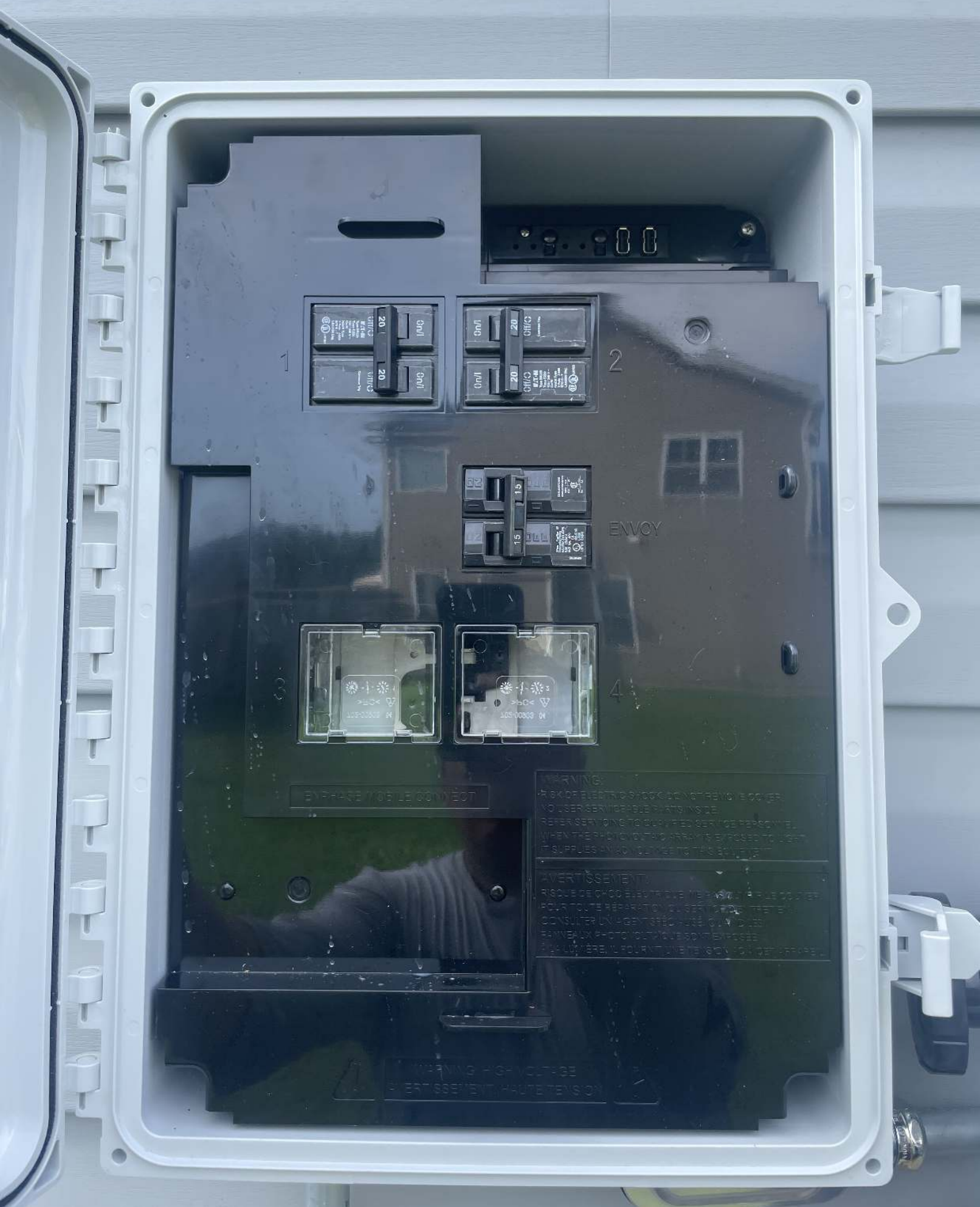






840-008893-11  
100VDC 20A  
+79°C 20A2

208



20 20  
GFI GFI  
20 20  
GFI GFI

20 20  
GFI GFI  
20 20  
GFI GFI

15 15  
GFI GFI  
15 15  
GFI GFI

M 68000-50T  
A > C <  
15 15

M 68000-50T  
A > C <  
15 15

BYPASS / MOBILE CONNECT

**WARNING:**  
RISQUE D'ÉLECTROCUTION. NE PAS TOUCHER À L'INTÉRIEUR.  
NO USER-SERVICEABLE PARTS INSIDE.  
REFER SERVING TO QUALIFIED SERVICE PERSONNEL.  
WHEN THE PHOTO-VOLTAIC ARRAY IS EXPOSED TO LIGHT,  
IT SUPPLIES ENERGY TO THE SERVICE.

**AVERTISSEMENT:**  
RISQUE DE CHOC ÉLECTRIQUE. NE PAS TOUCHER À L'INTÉRIEUR.  
POUR TOUTE RÉPARATION, CONSULTER UN ÉLECTRICIEN QUALIFIÉ.  
CONSULTER UN ÉLECTRICIEN QUALIFIÉ QUAND L'ARRAY PHOTO-VOLTAÏQUE  
EST EXPOSÉ À LA LUMIÈRE POURNT QU'IL GÉNÈRE DE L'ÉNERGIE.

**WARNING - HIGH VOLTAGE**  
**AVERTISSEMENT - HAUTE TENSION**





E49 100  
3/4" COVER

MAX. SIZE COND. #8 AWG

SEE FIT F161613

788  
3/4"



67

DON'S  
TRASH CO.  
910-993-6873



**E.T.O.N.**  
 TEST  
 TYPE BR  
 COMBINATION  
 AFCI  
 LOAD  
 POWER  
 NEUTRAL

**E.T.O.N.**  
 Type BR115  
 Type CH15  
 Type CM15  
 Type CM15-5MD  
 HACR Type  
 1 Pole, 2499  
 LV43355 Disj.  
 LISTED

**E.T.O.N.**  
 Common Trip  
 Type BR240  
 Type C240  
 Type CM240  
 HACR Type  
 2 Pole, 2499  
 LV43355 Disj.  
 LISTED

B Plugs

A Second Floor lights

B

A Outside Plugs

B

A

B

A P.V. Solar

B

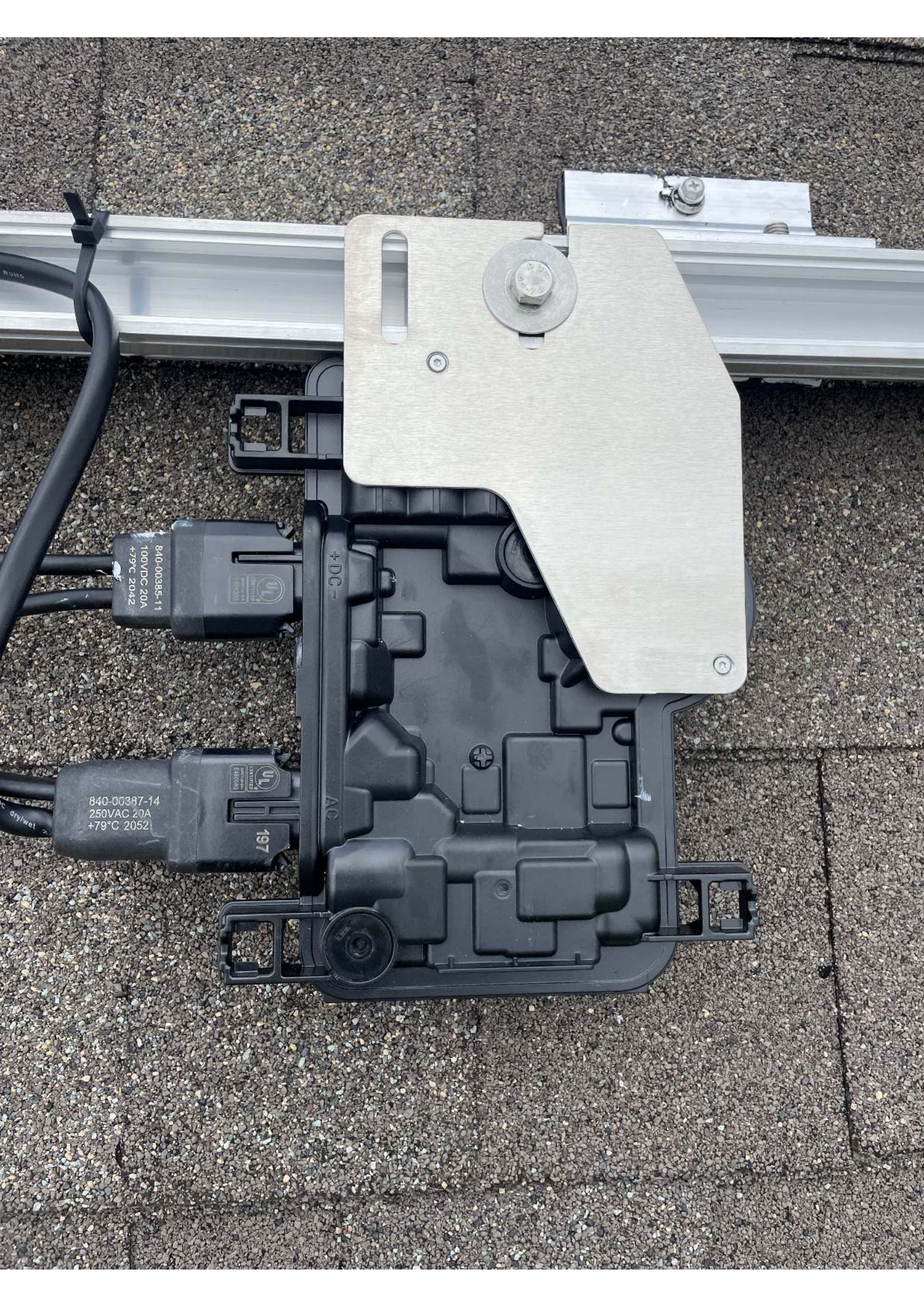
A

B

**CAUTION**  
 PHOTOVOLTAIC SYSTEM  
 CIRCUIT IS BACKFED

**PV SOLAR BREAKER**  
 DO NOT RELOCATE THIS  
 OVERCURRENT DEVICE

**"WARNING"**  
 POWER SOURCE  
 OUTPUT CONNECTION  
 DO NOT RELOCATE THIS  
 OVERCURRENT DEVICE



840-00385-11  
100VDC 20A  
+79°C 2042

840-00387-14  
250VAC 20A  
+79°C 2052

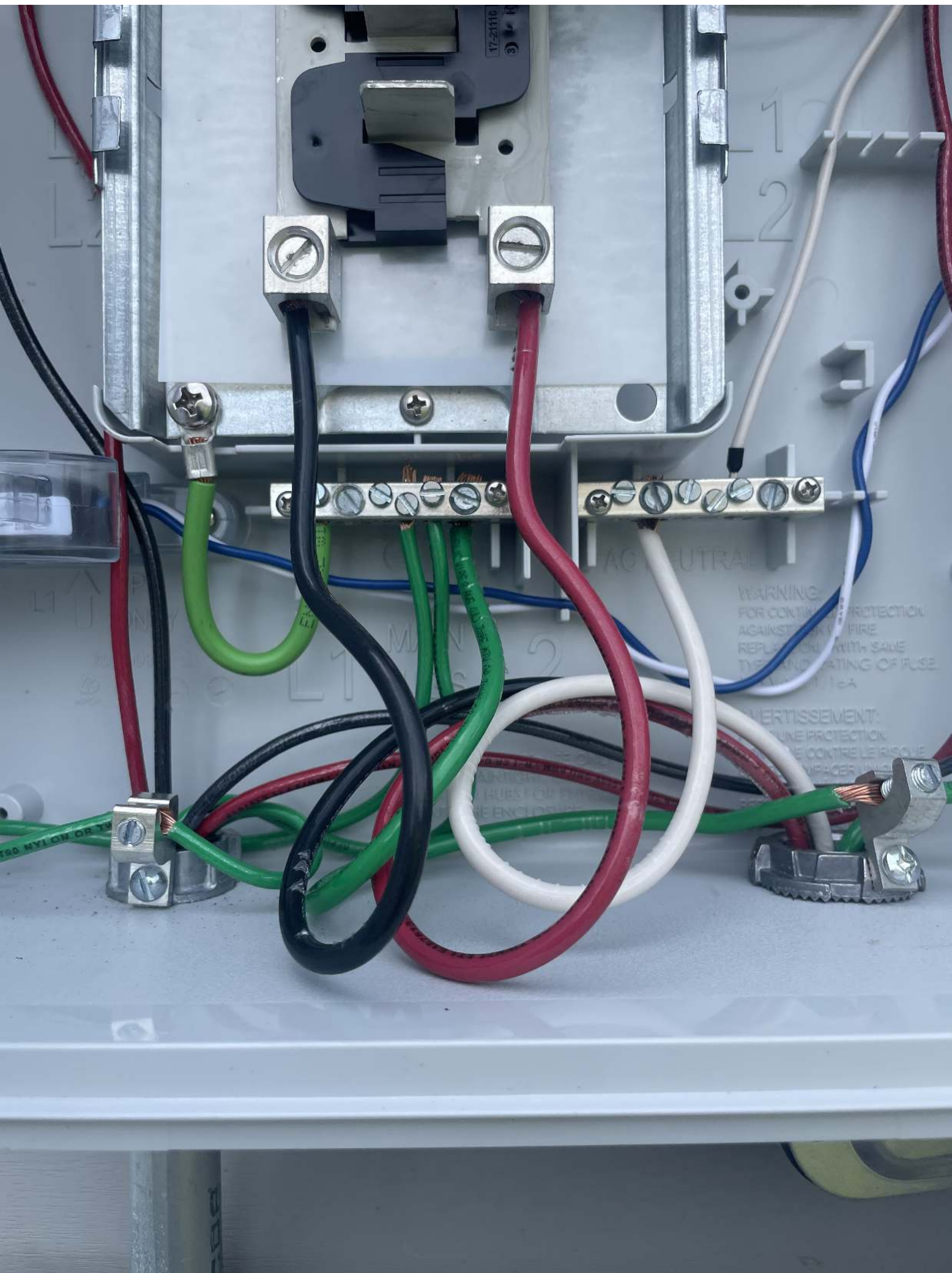
+DC-

AC

197







47-21110  
3

1  
2

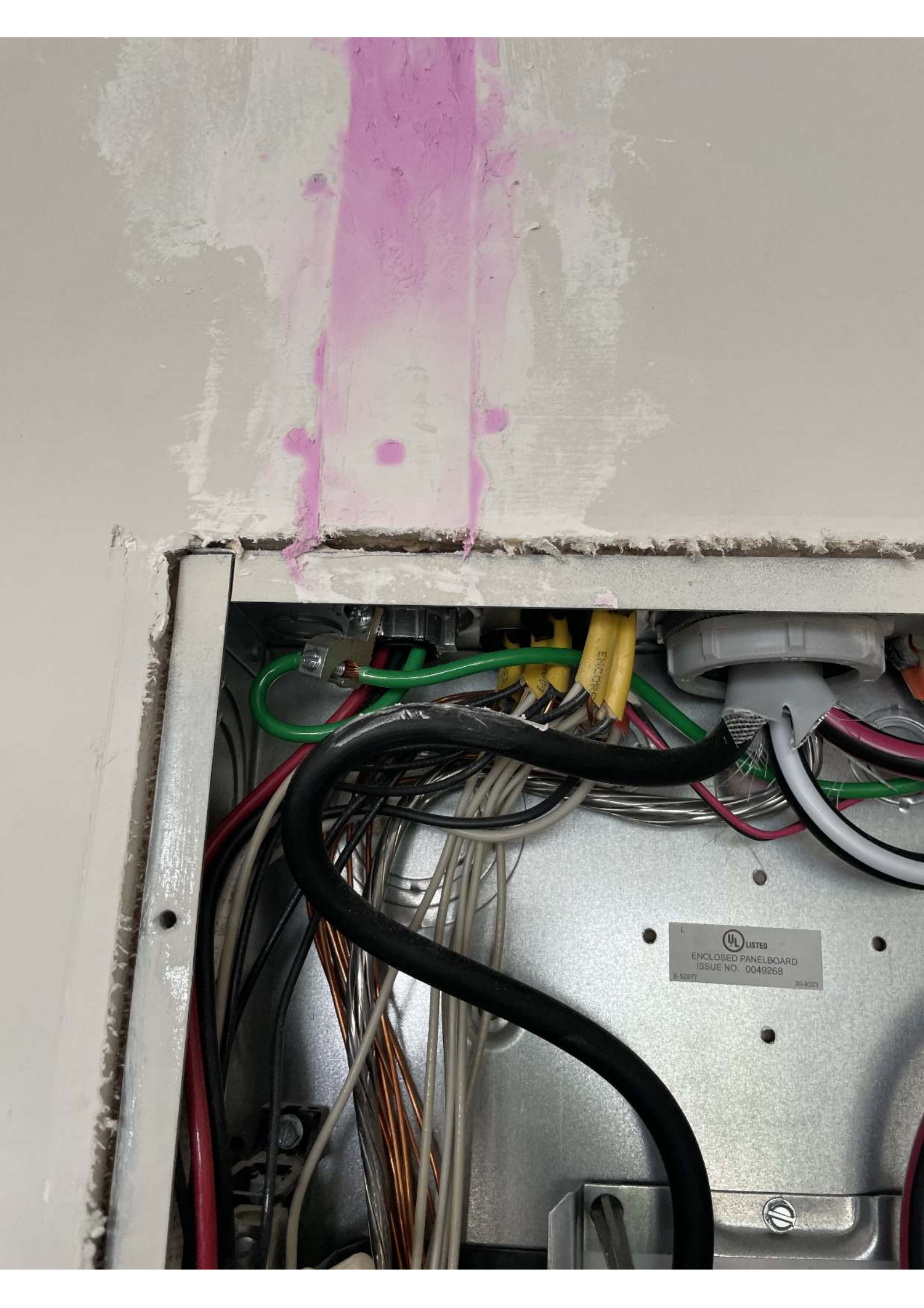
WARNING:  
FOR CONTINUED PROTECTION  
AGAINST FIRE,  
REPLACE WITH SAME  
TYPE AND RATING OF FUSE.

AVERTISSEMENT:  
POUR UNE PROTECTION  
CONTRE LE RISQUE  
D'INCENDIE, REMPLACER AVEC UN  
FUSIBLE DU MÊME TYPE ET DE LA MÊME CAPACITÉ.

UTRAL

ENCLOSURE





L  
UL LISTED  
ENCLOSED PANELBOARD  
ISSUE NO. 0049268  
E-52977 30-9323



Designed and assembled for




SIL-340NL


ELECTRICAL SPECIFICATIONS

measured at Standard Test Conditions (STC):  
1000W/m<sup>2</sup> irradiance, AM1.5G spectrum, 25°C cell temperature

CARACTÉRISTIQUES ÉLECTRIQUES  
mesurées dans conditions d'essai normalisées:  
1000W/m<sup>2</sup> rayonnement, spectre de AM1.5G, température des cellules de 25°C

Maximum Power (Pmax) Puissance Norminale Maximale	340+/-3% W
Maximum Power Voltage (Vpmax) Tension en Fonctionnement Optimal	<u>33.70 V</u>
Maximum Power Current (Ipmax) Courant en Fonctionnement Optimal	10.10 A
Open Circuit Voltage (Voc) Tension en Circuit Ouvert	<u>40.90 V</u>
Short Circuit Current (Isc) Intensité de Court-Circuit	10.50 A
Maximum System Voltage Tension Maximale du Système	<u>1000 V</u>
Series Fuse Série Fusible	20 A
Fire Rating Classement au Feu	Type 2

 For field connections use min No. 12 AWG wires suitable for a minimum of 90°C. Use copper wires only.  
Pour les connexions de terrain utilisez min 12 AWG res appropriées pour un min de 90°C. Utilisez des fils de cuivre seulement.

 Conforms to UL STD 1703  
Certified to ULC ORD STD C1003  
Intertek 4007764

TO DOWNLOAD INSTALLATION MANUAL  
OR DATASHEET, SCAN QR-CODE OR  
GO TO: [WWW.SILFABSOLAR.COM](http://WWW.SILFABSOLAR.COM)



Made in Canada

Silfab



**TITAN**  
SOLAR POWER

Design and assembled for

SIL-340NL

Solar  
Type In Green to Green

**ELECTRICAL SPECIFICATIONS**

measured at standard test conditions (STC):  
1000W/m<sup>2</sup> irradiance, AM 1.5G spect. in, 25°C cell temperature  
CARACTÉRISTIQUES ÉLECTRIQUES  
mesurées dans conditions d'essai normalisées:  
1000W/m<sup>2</sup> rayonnement, spectre de AM 1.5G, température des cellules de 25°C

340 +/- 3% W

39.7C V

1C.1C A

40.9C V

10.50 A

1.995 X

2C A

Type 2

Maximum Power (Pmax) Puissance nominale maximale	340 +/- 3% W
Maximum Power Voltage (Vpmax) Tension en fonctionnement optimal	39.7C V
Maximum Power Current (Ipmax) Courant en fonctionnement optimal	1C.1C A
Open Circuit Voltage (Voc) Tension en circuit ouvert	40.9C V
Short Circuit Current (Isc) Courant de court-circuit	10.50 A
Maximum System Voltage Tension maximale du système	1.995 X
Series Fuse Série fusible	2C A

TYPE 2  
 1. Maximum Power (Pmax) is the maximum power that the solar panel can produce under standard test conditions (STC).  
 2. Maximum Power Voltage (Vpmax) is the voltage across the solar panel when it is producing maximum power.  
 3. Maximum Power Current (Ipmax) is the current through the solar panel when it is producing maximum power.  
 4. Open Circuit Voltage (Voc) is the voltage across the solar panel when the circuit is open.  
 5. Short Circuit Current (Isc) is the current through the solar panel when the circuit is shorted.  
 6. Maximum System Voltage is the maximum voltage that the solar panel can tolerate.  
 7. Series Fuse is the fuse that should be used to protect the solar panel from overcurrent.





FTM  
Type BR220  
Type C220  
120/240 V ~  
CMAI  
2 Pole Type  
ET818 - T  
LR43555 Dis.  
LISTED

20 On/I

20 Common Trip

FTM  
Type BR220  
Type C220  
120/240 V ~  
MACH Type  
2 Pole - J489  
ET813 - T  
LR43555 Dis.  
LISTED

20 On/I

20 Common Trip

SIEMENS  
2 Poles Type OP  
Rating Rating  
1000 1025 A/IN  
40°C  
MACH Type  
UL LISTED  
CB ISSUE NO.  
283915

15 15

CU-AL BRONZE WIRE  
CONDUCTOR BOND  
AWG 14-2  
15-20  
mm<sup>2</sup> 2.4-4.4  
K 1

Terminal block with four screw terminals and a central slot.

Green terminal block with multiple screw terminals and wires connected.

Vertical metal rail with several screw terminals and wires connected.

Large black component, possibly a transformer or relay, with a white label and multiple terminals.

Wiring and components on the right side of the panel, including a white terminal block and various colored wires.





 **DANGER**  
HAZARDOUS VOLTAGE. WILL CAUSE SEVERE INJURY OR DEATH.

INSTALLER / ELECTRICIAN HAS A DUTY TO READ AND FOLLOW THE INSTALLATION INSTRUCTIONS LOCATED AT THE FOLLOWING URL - <http://www.eaton.com/Instructions>



 **DANGER**  
TENSION DANGEREUSE. PEUT CAUSER DES BLESSURES GRAVES OU LA MORT.

EL INSTALADOR / ELECTRICISTA TIENE EL DEBER Y LA OBLIGACION DE LEER Y SEGUIR LAS INSTRUCCIONES DE INSTALACION LOCALIZADAS EN EL SIGUIENTE HIPERVINCULO "URL":  
<http://www.eaton.com/Instructions>

 **PELIGRO**

VOLTAJE PELIGROSO. CALENTAMIENTO SEVERO O MUERTE.  
L'INSTALLATEUR / L'ELECTRICIEN ET SUIVRE LES DIRECTIVES QUE L'ON TROUVE A L'URL SUIVANT:  
<http://www.eaton.com/Instructions>

31-47138  
<http://www.eaton.com/Instructions>

Rev. 0





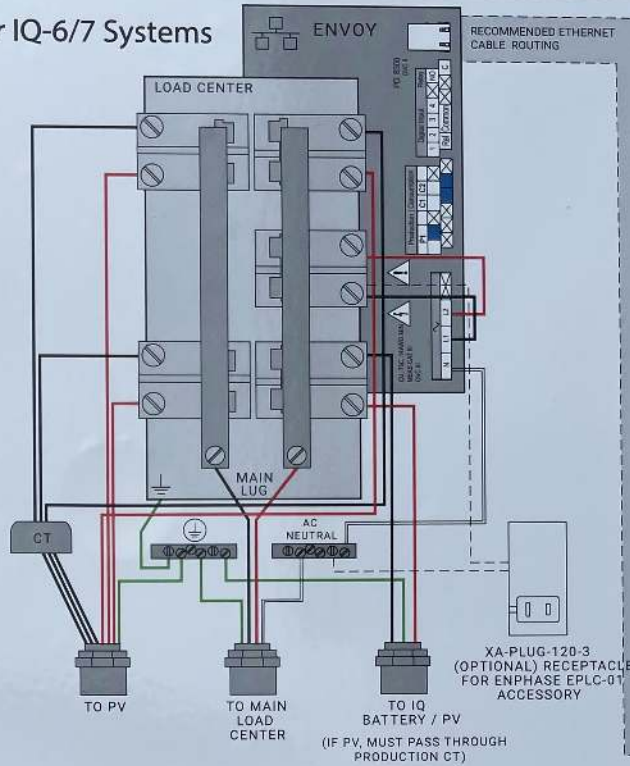
SP1000P010000  
V4.00000000  
1 000000000000

Combiner LED & buttons quick reference guide



- Enlighten communication LED**
- Green when connected to Enphase's Enlighten cloud.
  - Flashing green when connection to Enlighten or WPS is in progress.
  - Solid amber when connected to local network only (i.e., no internet).
  - Off if no network is available.
- AP mode LED**
- Green when AP mode is enabled, and Envoy Wi-Fi network is available.
  - Off when AP mode is disabled.
  - Off is default unless installer is using AP mode.
- AP mode button**
- Only used by installer during installation or to configure the system.
  - Starts Envoy's wireless Access Point (AP) to connect mobile phone directly.
- Power production LED**
- Green light when all microinverters are producing power.
  - Flashing green when an upgrade of the microinverters is in progress.
  - Amber if one or more microinverters stop producing power.
  - Flashing amber when microinverters are not yet detected.
  - Off if all the microinverters stop producing or communicating.
  - Usually amber at dawn/dusk, off at night & flashing amber after Envoy restarts.
- Device communication LED**
- Flashing green when Envoy is scanning for microinverters.
  - Green when all provisioned microinverters are communicating with Envoy.
  - Amber if one or more microinverters are not communicating with Envoy.
  - Off if all microinverters are not communicating with Envoy.
  - Usually amber during dawn/dusk and off at night.
- Device scan button**
- Only used by installer during installation or to configure the system.
  - Starts/stops a 15-minute scan for devices over the power line.
- All LEDs**
- Flashing green when software upgrade is in progress.
  - Flashing amber when IQ Envoy is booting up.

For IQ-6/7 Systems



**IQ Combiner 3 ES**

Photovoltaic Combiner Box  
X-IQ-AM1-240-3-ES



**Electrical ratings**

**Voltage** 240VAC, 60Hz  
**DG Breakers** 80A MAX (combined)  
**DG Inputs** 64A MAX (combined)  
**Output** 65A MAX, 90A MAX feeder OCPD  
**Temperature** 46°C MAX ambient  
 Use only Eaton BR series Breakers (60A max)

S/N:

202114074678

P/N:

883-00820 11

**Dedicated solar and DG Combiner Box - do not add loads 10 AMP Envoy Breaker not used for backfeed**

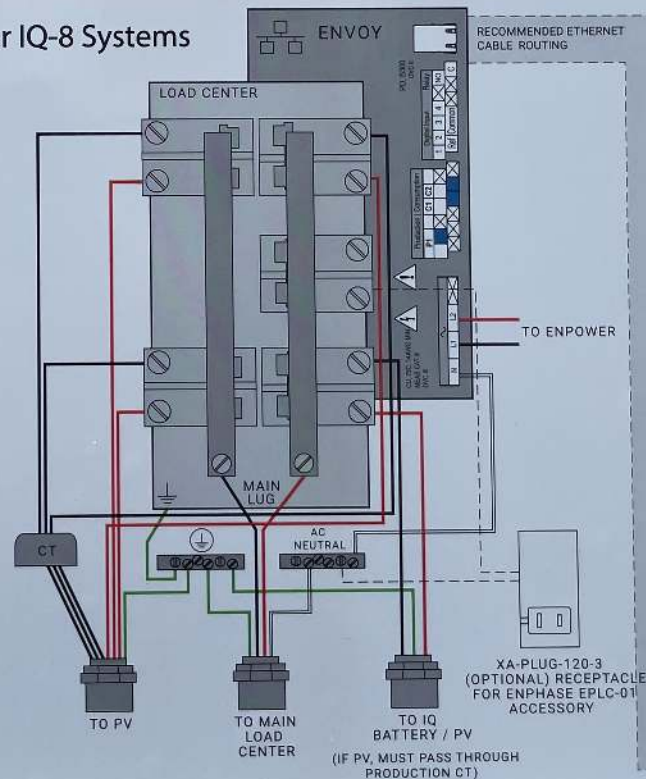
Connection	Wire sizes	Torque
DG Breaker	14-10 AWG	2.2 Nm (20 lb-in)
	8 AWG	2.8 Nm (25 lb-in)
	6-4 AWG	3.0 Nm (27 lb-in)
60A Circuit Breaker only	4-1/0 AWG	5.0 Nm (45 lb-in)
Neutral and ground	14-1/0 AWG	5.0 Nm (45 lb-in)
	6-14 AWG	2.2 Nm (20 lb-in)
Main lug	10-4 AWG	5.0 Nm (45 lb-in)
	3-2/0 AWG	5.6 Nm (50 lb-in)

Copper conductors only, rated min. 75°C. Follow NFPA 70 (NEC), or CSA C22.1 part 1, and all local codes.

For DG Breakers larger than 20A, use wire insulated for 90°C based on 75°C ampacities.

Designed in California and New Zealand  
Made in Mexico

For IQ-8 Systems





**Atlantic Construction**

**"Building Value"**

**Please Email or Fax to:**

**Danny Terry**

**danny@atlanticconstructioninc.com**

**Fax: 910-347-0738**

**Office: 910-938-9053**

**Heating & Air (910) 858-0000**

**Electrical (910) 389-7890**

**Plumbing (910) 429-9939**

**Septic (910) 843-5691**

**Appliances (910) 483-8194**

**"WARNING"**  
POWER SOURCE  
OUTPUT CONNECTION  
DO NOT RELOCATE THIS  
OVERCURRENT DEVICE

**RAPID SHUTDOWN SWITCH  
FOR SOLAR PV SYSTEM**

**WARNING**  
ELECTRICAL SHOCK HAZARD  
DO NOT TOUCH TERMINALS TERMINALS  
ON BOTH LINE AND LOAD SIDE MAY BE  
ENERGIZED IN THE OPEN POSITION

**PHOTOVOLTAIC AC DISCONNECT**  
MAXIMUM AC OPERATING CURRENT : 100 A  
MAXIMUM AC OPERATING VOLTAGE : 240V



**"WARNING"**  
POWER SOURCE  
OUTPUT CONNECTION  
DO NOT RELOCATE THIS  
OVERCURRENT DEVICE





Photovoltaic  
Combiner Box  
X-IQ-AM1-240-3-ES



**Electrical ratings**

**Voltage** 240VAC, 60Hz  
**DG Breakers** 80A MAX (combined)  
**DG Inputs** 64A MAX (combined)  
**Output** 65A MAX, 90A MAX feeder OCPD  
**Temperature** 46°C MAX ambient  
 Use only Eaton BR series Breakers (60A max)

S/N:

P/N:



**Dedicated solar and DG Combiner Box - do not add loads 10 AMP  
 Envoy Breaker not used for backfeed**

Connection	Wire sizes	Torque
DG Breaker	14-10 AWG	2.2 Nm (20 lb-in)
	8 AWG	2.8 Nm (25 lb-in)
	6-4 AWG	3.0 Nm (27 lb-in)
60A Circuit Breaker only	4-1/0 AWG	5.0 Nm (45 lb-in)
Neutral and ground		
Large screw	14-1/0 AWG	5.0 Nm (45 lb-in)
	Small screw	6-14 AWG
Main lug	10-4 AWG	5.0 Nm (45 lb-in)
	3-2/0 AWG	5.6 Nm (50 lb-in)

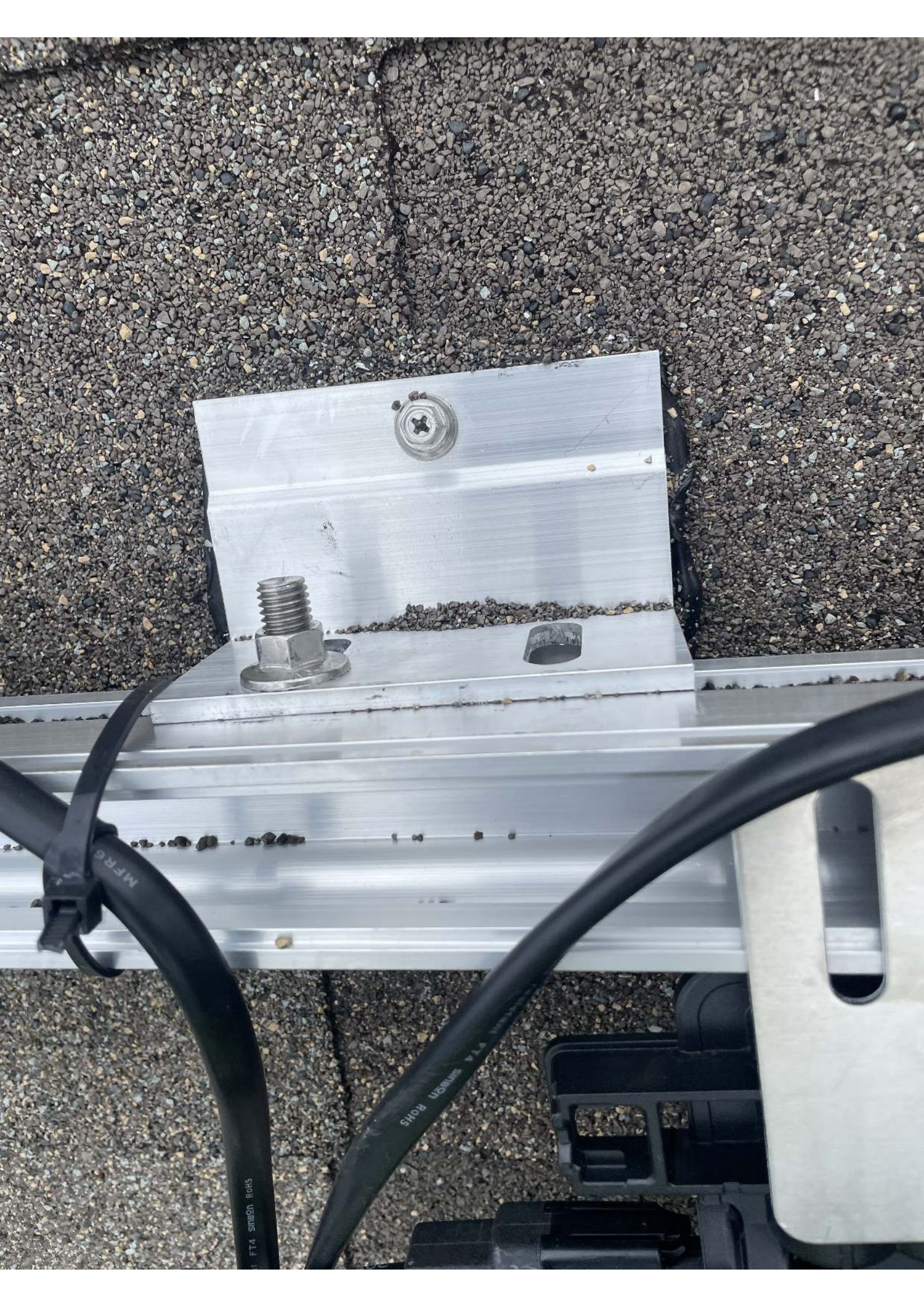
Copper conductors only, rated min. 75°C.  
 Follow NFPA 70 (NEC), or CSA C22.1 part 1, and all local codes.















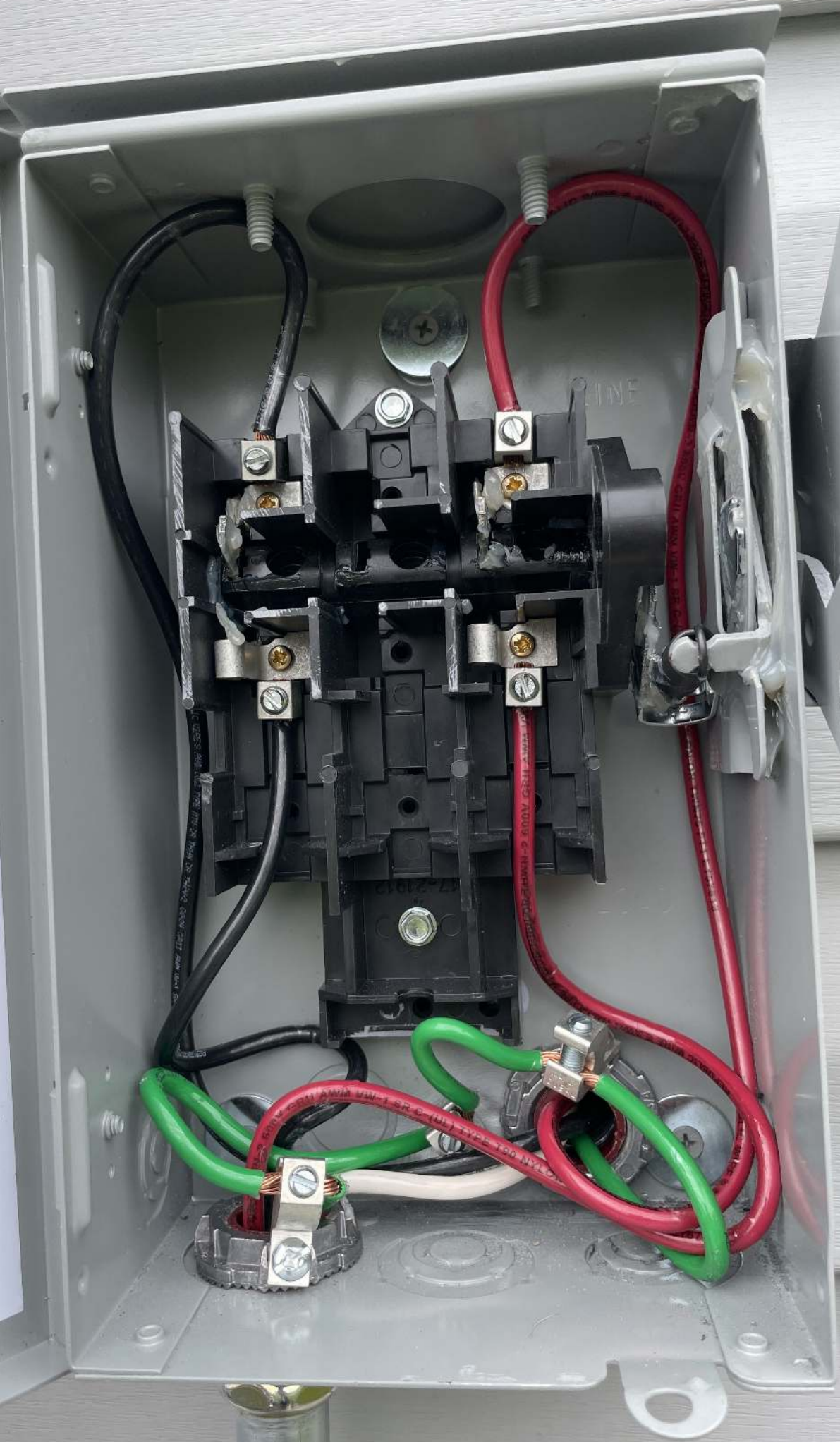


**⚠ DANGER**  
NECESSAIRE. PEUT CAUSER DES BLESSURES  
SÉRIEUSES.  
Arrêter l'interrupteur lorsque la  
manœuvre est terminée.  
En toute circonstance, mettre l'interrupteur hors  
circuit avant d'enlever ou d'installer un fusible.  
Ce n'est pas un dispositif de détection de la  
surcharge. Les valeurs nominales sont appropriées  
pour des circuits à charge normale (sans fusible) pour  
l'interrupteur est hors circuit (OFF).  
Remplacement en amont de l'interrupteur  
à l'arrêt. Remplacer les pièces  
dérivées avant de remettre sous tension.

E-6239-G  
**UL LISTED**  
ENCLOSED SWITCH  
INTERRUPTOR EN GABINET  
INTERRUPTOR SOB COFFRET  
ISSUE NO. AL-72  
**NOM-367-ANCE**

Equipo de Acometida cuando se instala el kit  
de Neutro es instalado, el voltaje que  
circula es capaz de entregar no más de 100 000  
VA - máximo, cuando sea protegido por  
fusibles clasificados a 30 A máximo. Adecuado para  
entregar no más de 10 000 A RCM  
máximo, cuando sea protegido por cualquier  
dispositivo de sobrecorriente clasificado a 30 A máximo.  
Temperatura de operación: 75°C /  
Sección transversal del Conductor mm<sup>2</sup> /  
Sección transversal del conductor  
AL - CU  
Este equipo es un equipo de servicio cuando se le  
utiliza. Si el kit neutro es utilizado, las potencias  
nominales aplicables: 120/240V - 3 fil  
de 100,000 amperes eficaces simétricas  
máximo, cuando sea protegido por fusibles de  
30 amperes máximo. Convient para un  
carga de 10,000 amperes eficaces simétricas  
máximo, cuando sea protegido por cualquier  
dispositivo de protección contra  
sobrecorriente clasificado a 30 amperes  
máximo.  
Temperatura de operación: 75°C.  
Sección conductores / #14 - #6 AWG / 35 Lb. - Pa.  
Sección AL - CU

PUB53723









Combiner LED & buttons quick reference guide

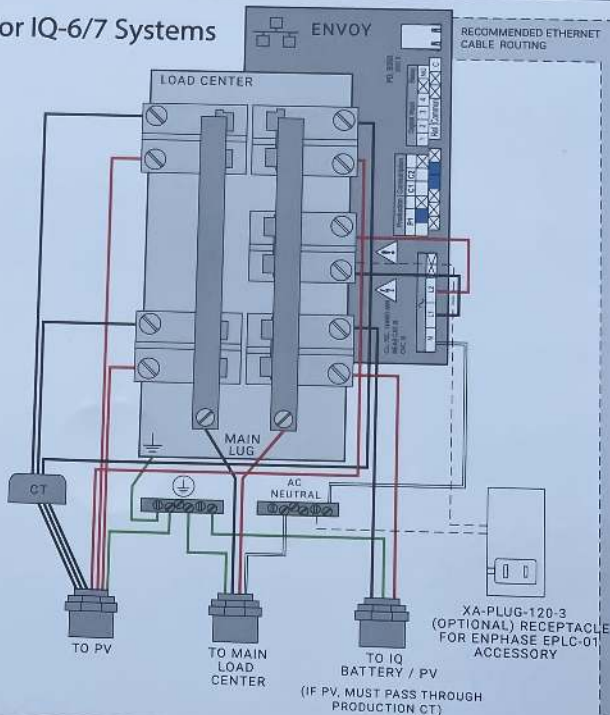


- Enlighten communication LED**
  - Green when connected to Enlighten's Enlighten cloud
  - Flashing green when connection to Enlighten or WFS is in progress
  - Solid amber when connected to local network only i.e., no internet
  - Off if no network is available
- AP mode LED**
  - Green when AP mode is enabled, and Envoy Wi-Fi network is available
  - Off when AP mode is disabled
  - Off is default unless installer is using AP mode
- AP mode button**
  - Only used by installer during installation or to configure the system
  - Starts Envoy's wireless Access Point (AP) to connect mobile phone directly
- Power production LED**
  - Green light when all microinverters are producing power
  - Flashing green when an upgrade of the microinverters is in progress
  - Amber if one or more microinverters stop producing power
  - Flashing amber when microinverters are not yet detected
  - Off if all the microinverters stop producing or communicating
  - Usually amber at dawn/dusk, off at night & flashing amber after Envoy restarts
- Device communication LED**
  - Flashing green when Envoy is scanning for microinverters
  - Green when all provisioned microinverters are communicating with Envoy
  - Amber if one or more microinverters are not communicating with Envoy
  - Off if all microinverters are not communicating with Envoy
  - Usually amber during dawn/dusk and off at night
- Device scan button**
  - Only used by installer during installation or to configure the system
  - Starts/stops a 15-minute scan for devices over the power line

All LED's

- Flashing green when software upgrade is in progress
- Flashing amber when IQ Envoy is booting up

For IQ-6/7 Systems



XA-PLUG-120-3 (OPTIONAL) RECEPTACLE FOR ENPHASE EPLC-01 ACCESSORY

(IF PV, MUST PASS THROUGH PRODUCTION CT)



**IQ Combiner 3 ES**

Photovoltaic Combiner Box  
X-IQ-AM1-240-3-ES



Electrical ratings

- Voltage** 240VAC, 60Hz
- DG Breakers** 80A MAX (combined)
- DG Inputs** 64A MAX (combined)
- Output** 65A MAX, 90A MAX feeder OCPD
- Temperature** 46°C MAX ambient
- Use only Eaton BR series Breakers (60A max)

S/N:



P/N:



Dedicated solar and DG Combiner Box - do not add loads 10 AMP Envoy Breaker not used for backfeed

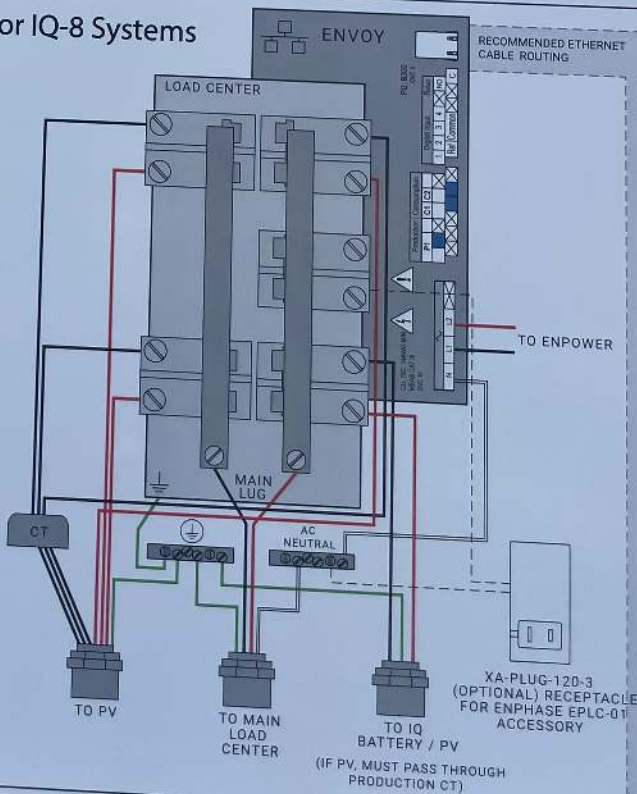
Connection	Wire sizes	Torque
DG Breaker	14-10 AWG	2.2 Nm (20 lb-in)
	8 AWG	2.8 Nm (25 lb-in)
	6-4 AWG	3.0 Nm (27 lb-in)
60A Circuit Breaker only	4-1/0 AWG	5.0 Nm (45 lb-in)
Neutral and ground	14-1/0 AWG	5.0 Nm (45 lb-in)
	6-14 AWG	2.2 Nm (20 lb-in)
Main lug	10-4 AWG	5.0 Nm (45 lb-in)
	3-2/0 AWG	5.6 Nm (50 lb-in)

Copper conductors only, rated min 75°C. Follow NFPA 70 (NEC), or CSA C22.1 part 1, and all local codes.

For DG Breakers larger than 20A, use wire insulated for 90°C based on 75°C ampacities.

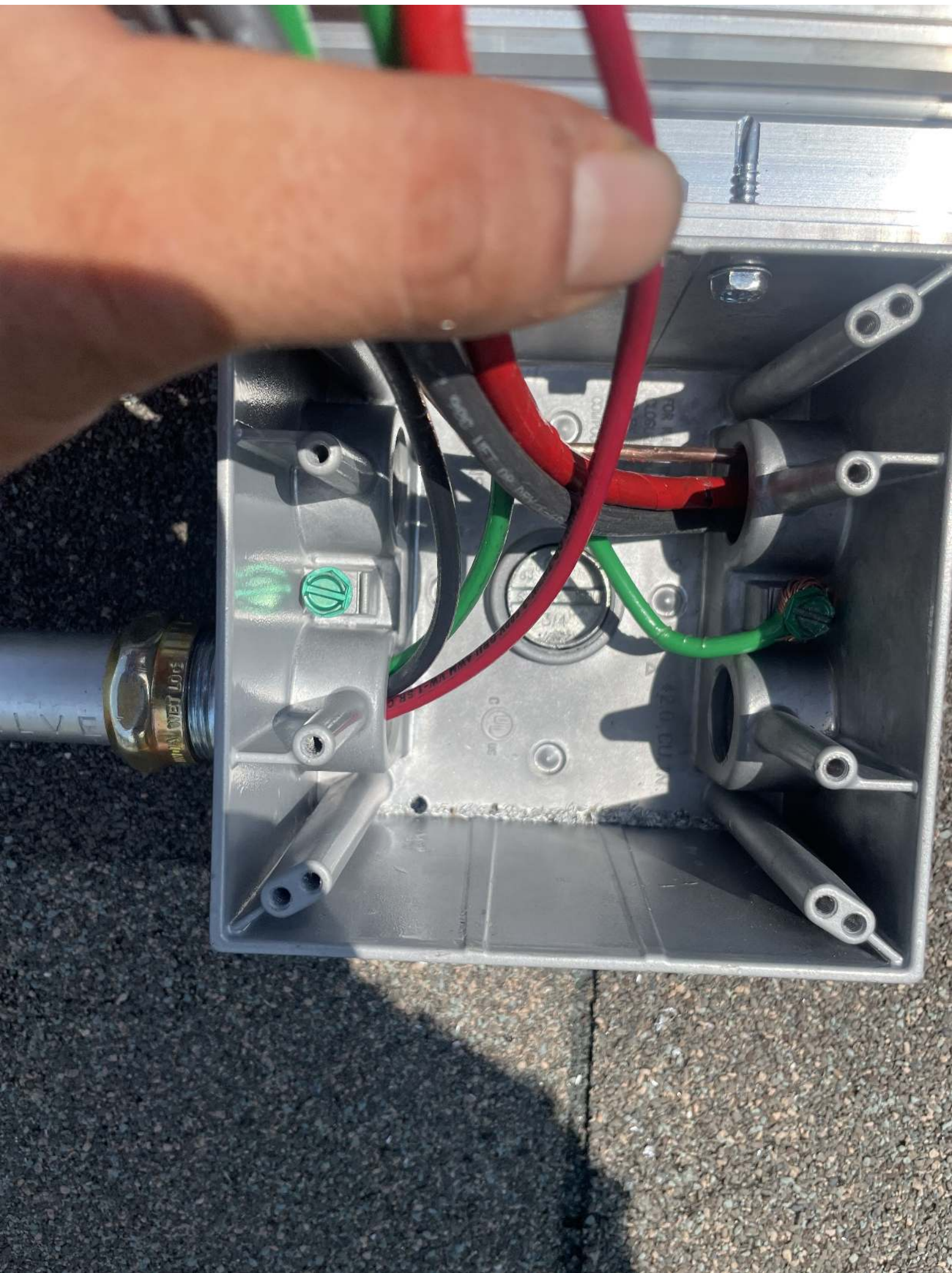
Designed in California and New Zealand  
Made in Mexico

For IQ-8 Systems



XA-PLUG-120-3 (OPTIONAL) RECEPTACLE FOR ENPHASE EPLC-01 ACCESSORY

(IF PV, MUST PASS THROUGH PRODUCTION CT)



ER

BLESSURES

le

her's

usible

res.

pour

FFA

ur

ision.

LISTED

TON

ADINETE

COFFRET

72

ANCE

la el kit

ue

100 000

ur

o para

uier

háximo.

mm<sup>2</sup> /

le kit

ances

ils

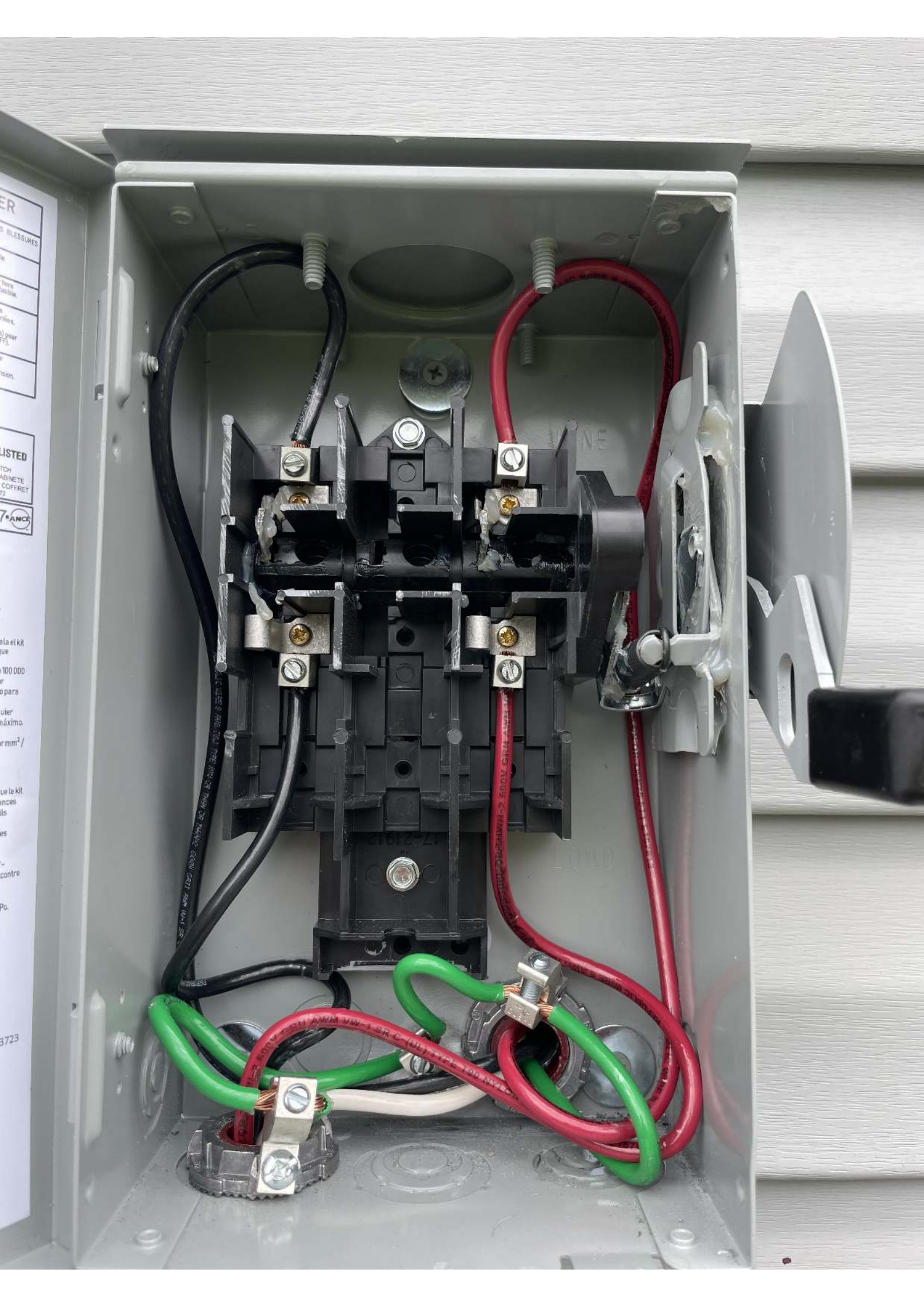
es

-

contre

Pa.

3723





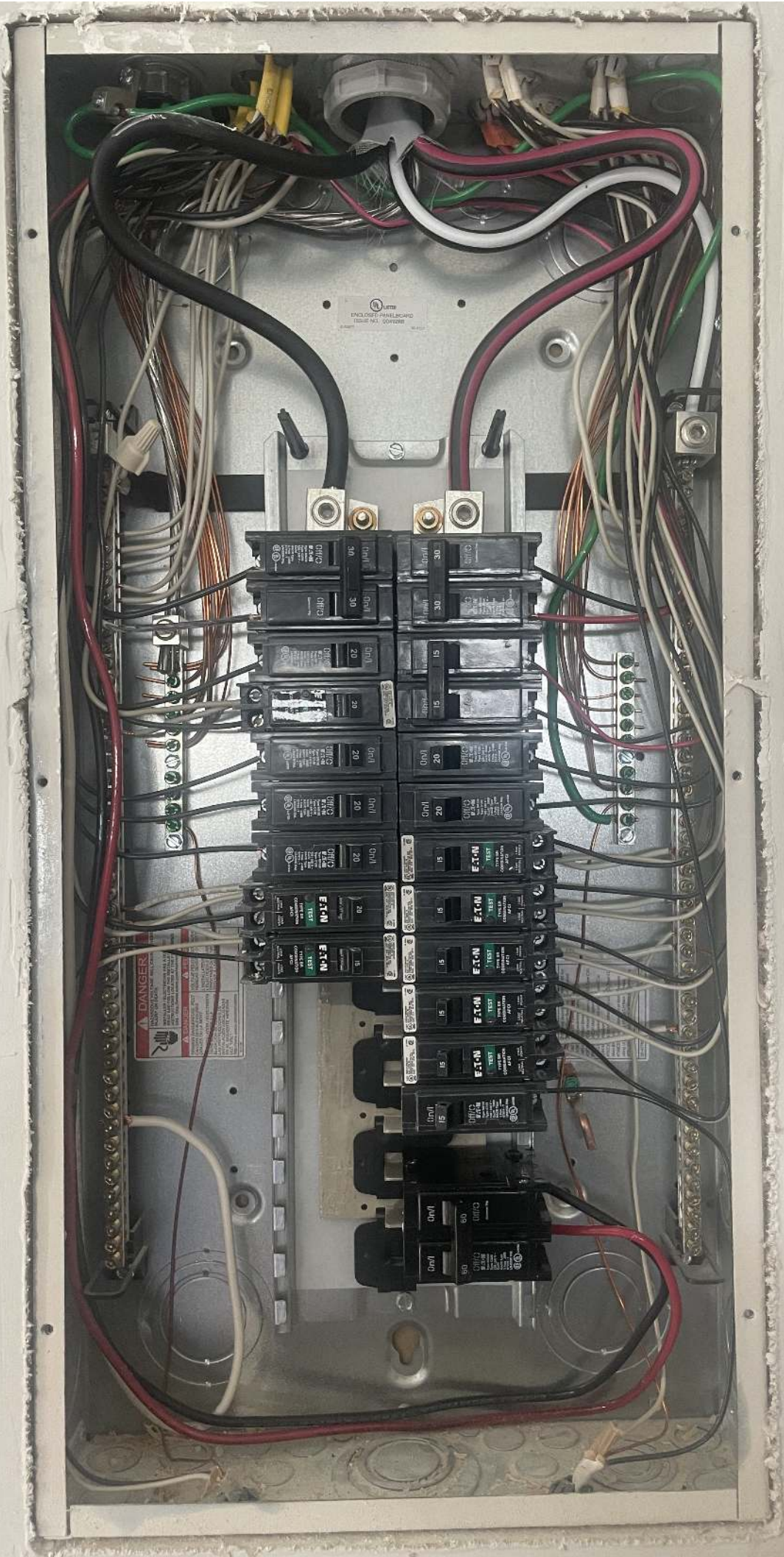


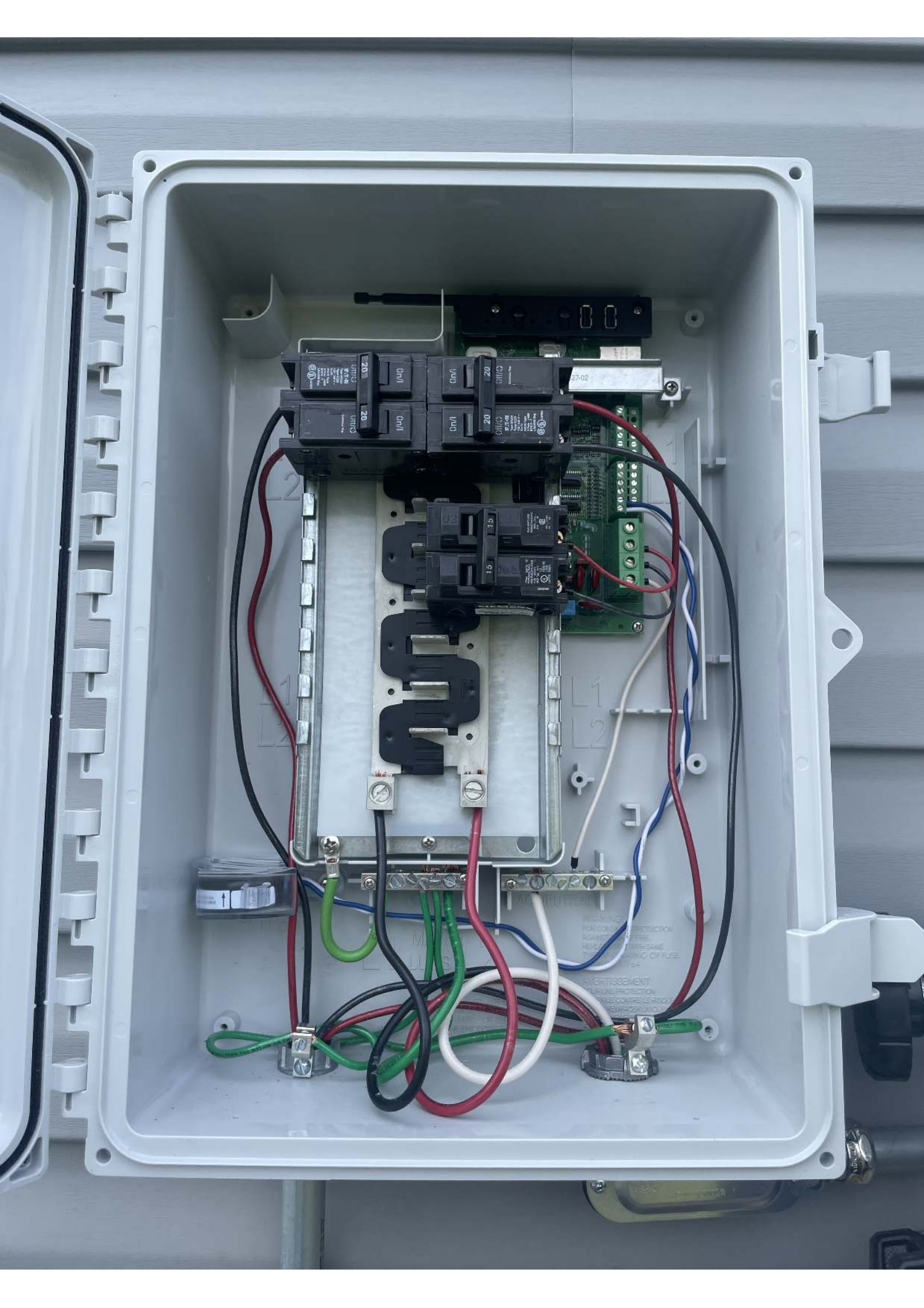


SELECT  
WHITE  
Super-TiB  
No Pe Bee!

Super-TiB







WARNING  
FOR CONSUMER PROTECTION  
AGAINST SHORT CIRCUIT  
PLEASE REPLACE WITH SAME  
TYPE AND RATING OF FUSE.

AVERTISSEMENT  
PROTECTION  
CONTRE LES COURT-CIRCUITS  
REPLACEZ PAR UN FUSIBLE  
DU MÊME TYPE ET MÊME  
RANGÉE.





### SITE SAFETY PLAN

Ron Adams Safety Manager (919) 630-2598



<b>REVIEW, DISCUSS, &amp; UNDERSTAND JSP</b>
TSP #: 77847
INSTALL ADDRESS: 67 Folly Ct Linden, NC. 28356
DATE: 8/3/21
TIME:
FOREMAN NAME:
FOREMAN SIGNATURE:

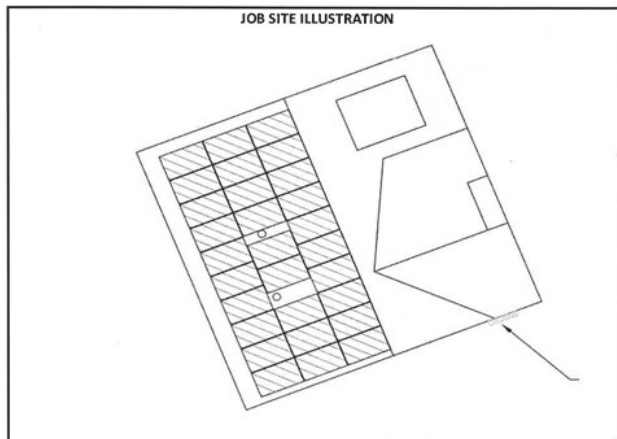
Hydration Coach:
Roof Tilt:
Special Precautions:
Attic Run: Yes ___ No ___
Driving Hazards:
Predicted Temperature:
Weather Conditions:
Metal Roof:

PERSONS COVERED BY THIS JSP	
Print Name	Initial

INJURED AT WORK TODAY? INITIAL YES OR NO	
YES	NO

**NAME OF NEAREST MEDICAL FACILITY:** Central Harnett Hospital  
**ADDRESS & PHONE NUMBER:** 215 Brightwater Dr. Lillington, NC. 27546 (910) 892-1000

TODAY'S SPECIFIC HAZARDS - (Use additional sheets if necessary)	
JOB STEPS	POTENTIAL HAZARDS
Driving to Job	_____
Trailer	_____
Falling	_____
Ladders	_____
Weather	_____
Other	_____



**BRANCH MANAGER/FIELD SUPERVISOR:** Robert Marean (385) 226-2186

**ADDITIONAL NOTES:** Take breaks as needed to cool down, lunch breaks required, report any heat illness symptoms immediately to your Manager

8/3/2021

67 Folly Ct, Linden, NC 28356 to Central Harnett Hospital - Google Maps


Google Maps

67 Folly Ct, Linden, NC 28356 to Central Harnett Hospital

Drive 16.3 miles, 25 min



Map data ©2021 2 mi

 via Elliott Bridge Rd and NC-210 N 25 min  
Fastest route now, avoids road closure on Wire Rd 16.3 miles

Explore Central Harnett Hospital

-  Restaurants
-  Hotels
-  Gas stations
-  Parking Lots
-  More