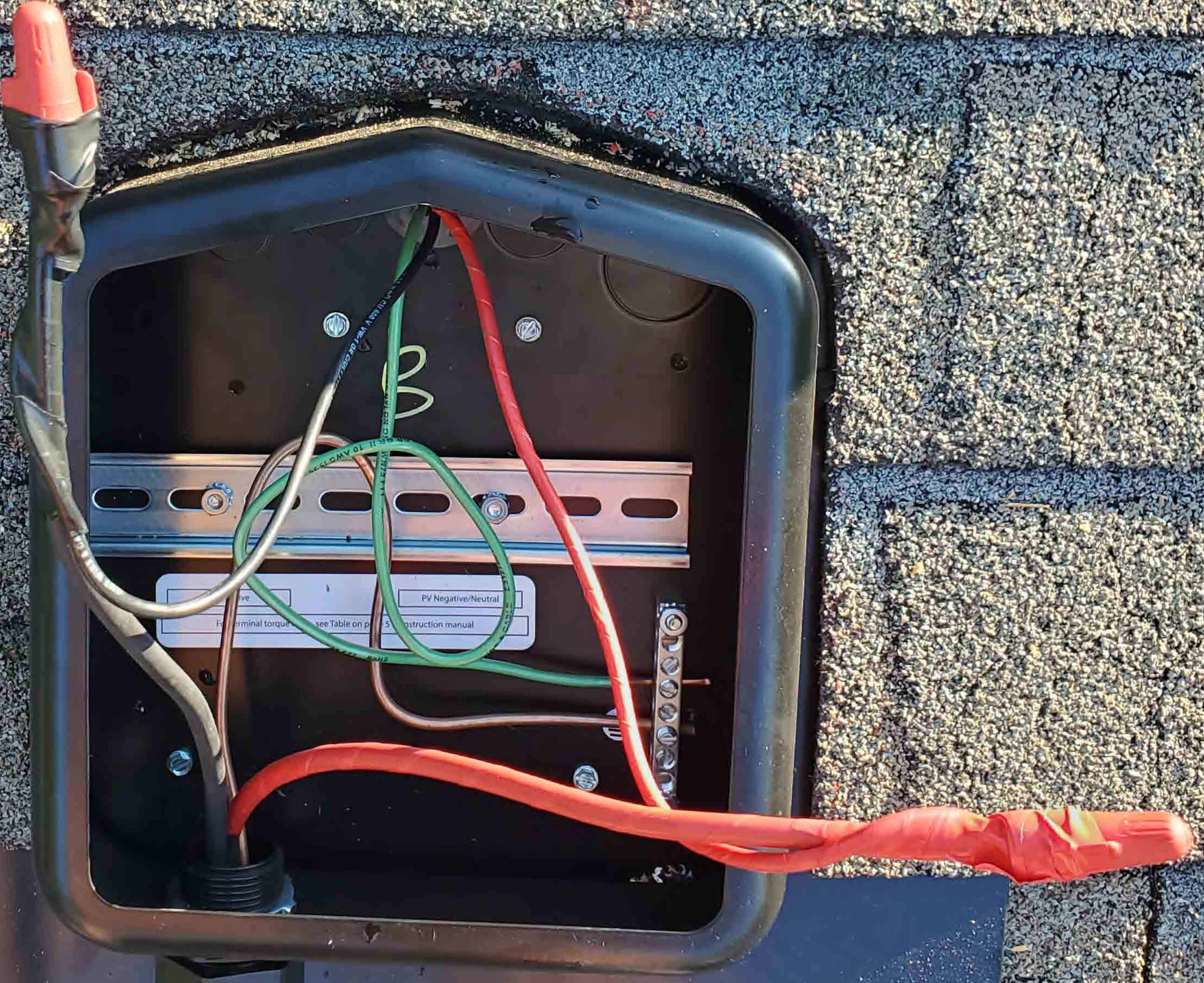




AVERTISSEMENT
RISQUE DE CHOC ELECTRIQUE: QUAND LE CHAMP PHOTOVOLTAIQUE EST EXPOSE A LA LUMIERE, UNE TENSION CC EST FOURNIE A CET EQUIPEMENT. SURFACES CHAUDES: NE PAS TOUCHER, AFIN DE REDUIRE LES RISQUES DE BRULURES LE COURANT DE RETOUR INJECTE PAR LE CONVERTISSEUR EN CAS DE DEFAILLANCE DANS LE MODULE PV EST TOUJOURS NUL.





SOLADECK B
WARNING: PHOTOVOLTAIC
POWER SOURCE

STANLEY

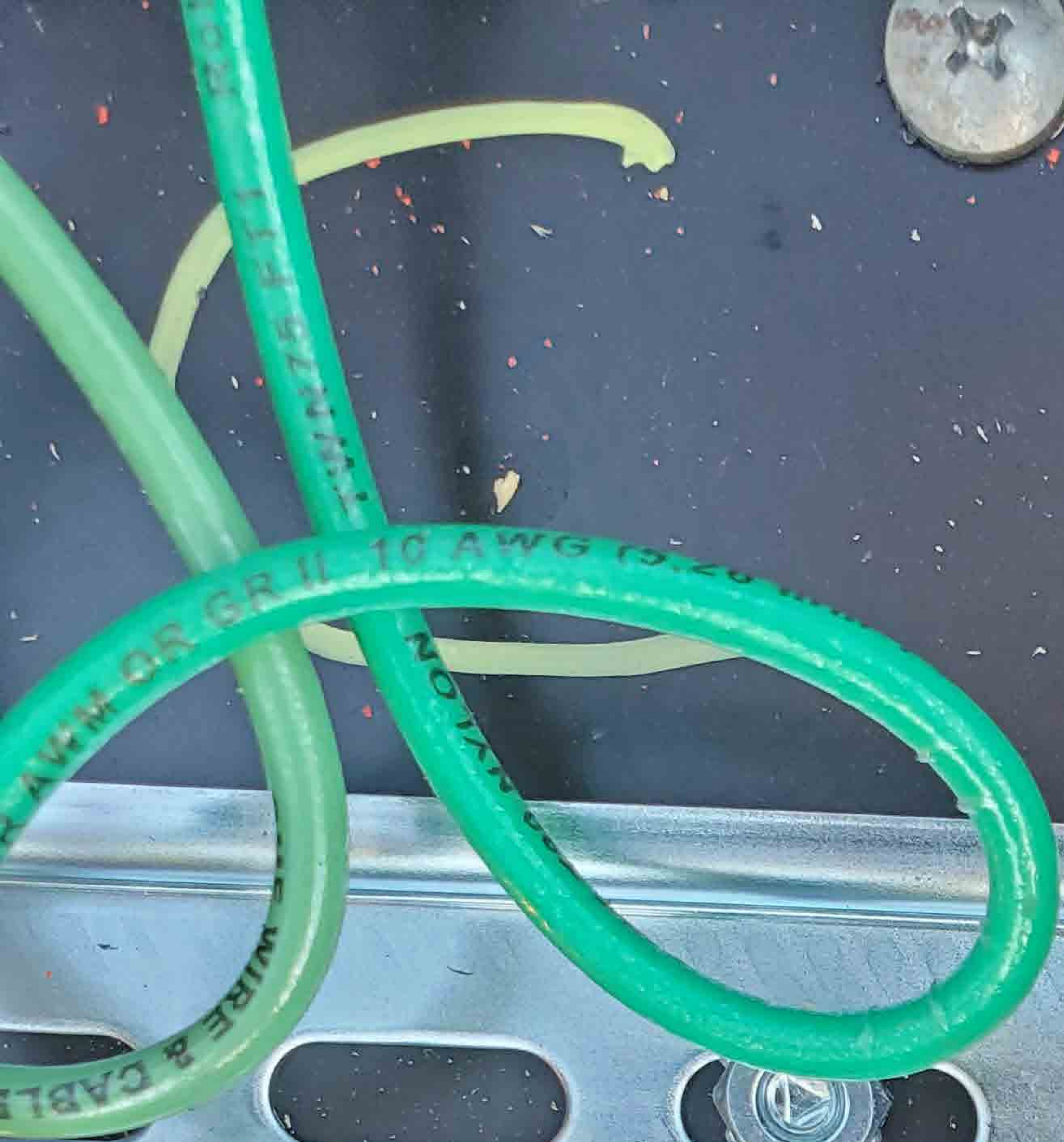


FCC

Do Not
c
US
ETL
Intertek
4004590

WARNING
NOT TO TOUCH
WHEN THE RISK OF
ELECTRIC SHOCK IS PRESENT
OR WHEN THE RISK OF
FIRE IS PRESENT





PV Negative/Neutral

see Table on page 5 ... tion manual







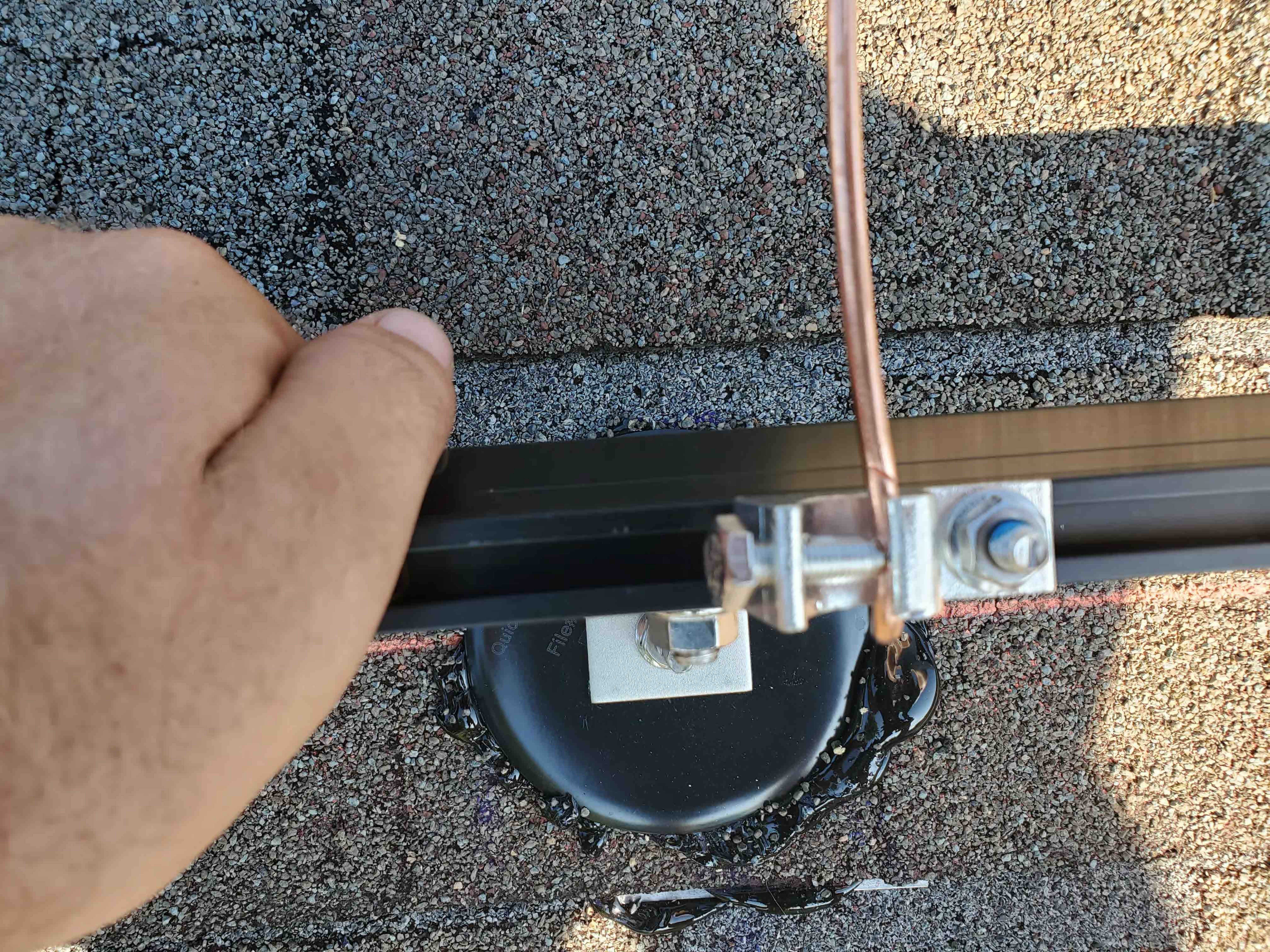
320 10A

1013

Hongli

VW-1

-400C









EE

Positive

PV Negative/Neutral

terminal torque loads, see Table on page... manual

WET OR DRY 6-48 C3 50W RES DIRECT BURIAL OR RW-2

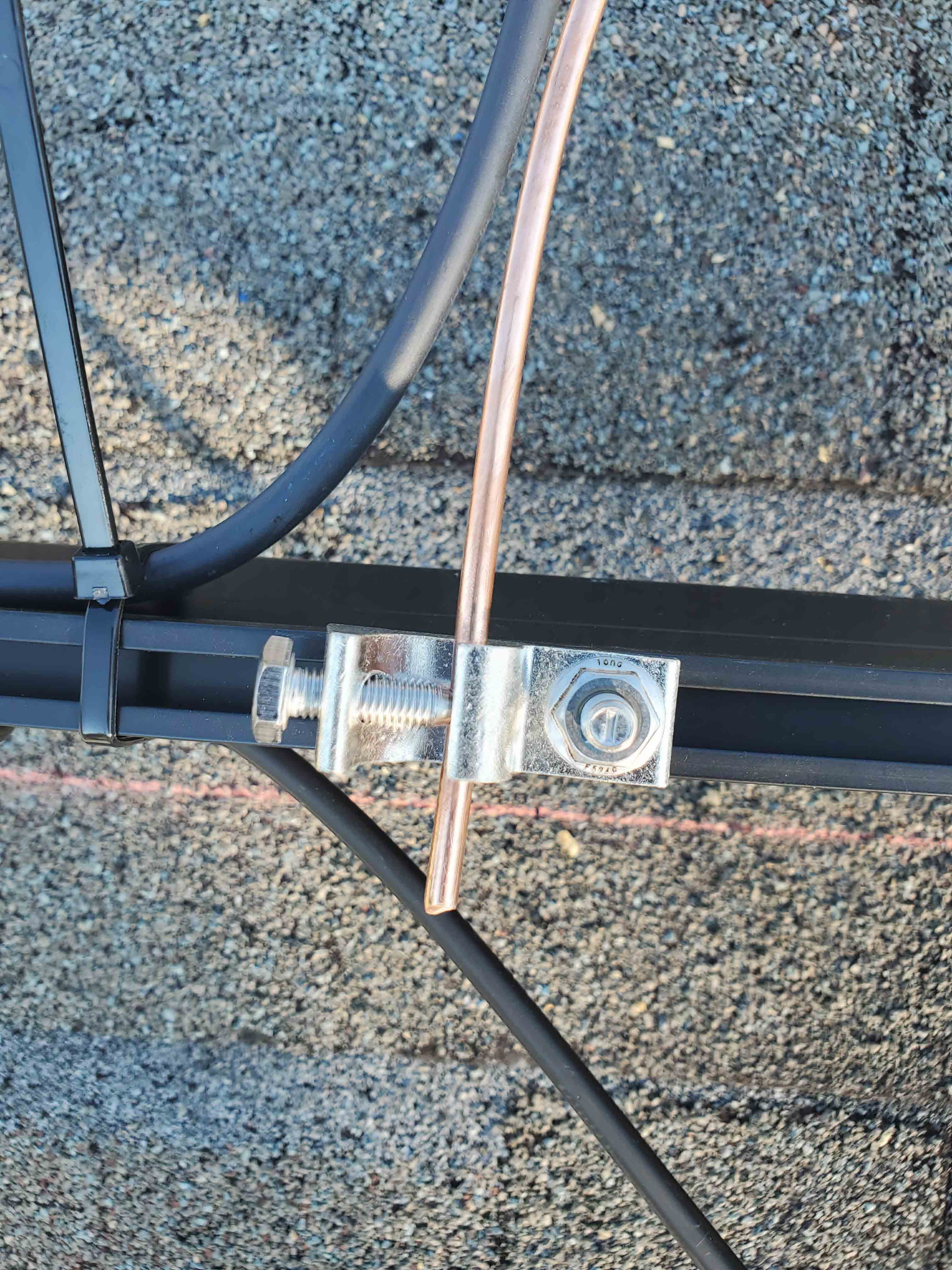




SOLADECK
WARNING: PHOTOVOLTAIC
POWER SOURCE

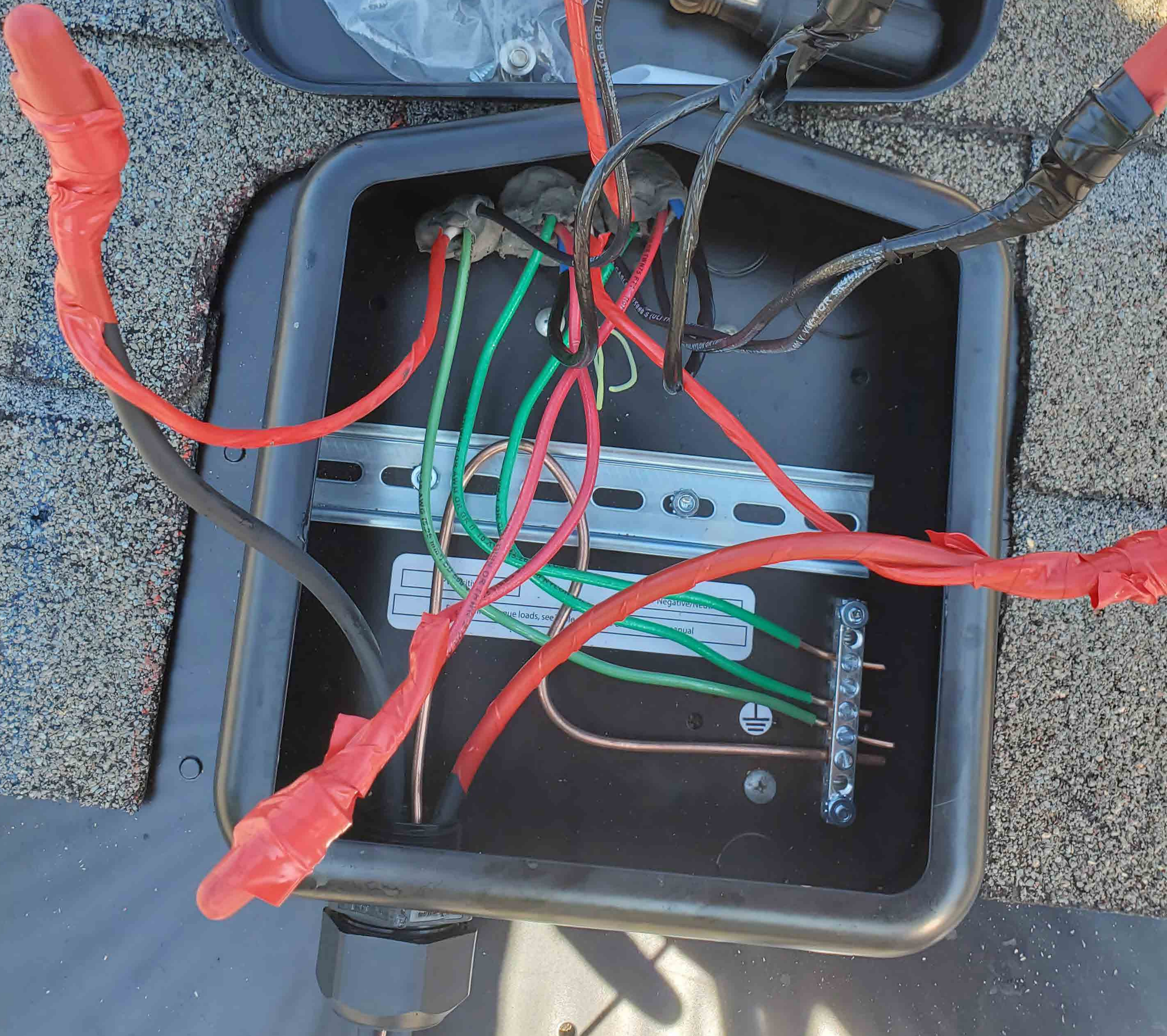










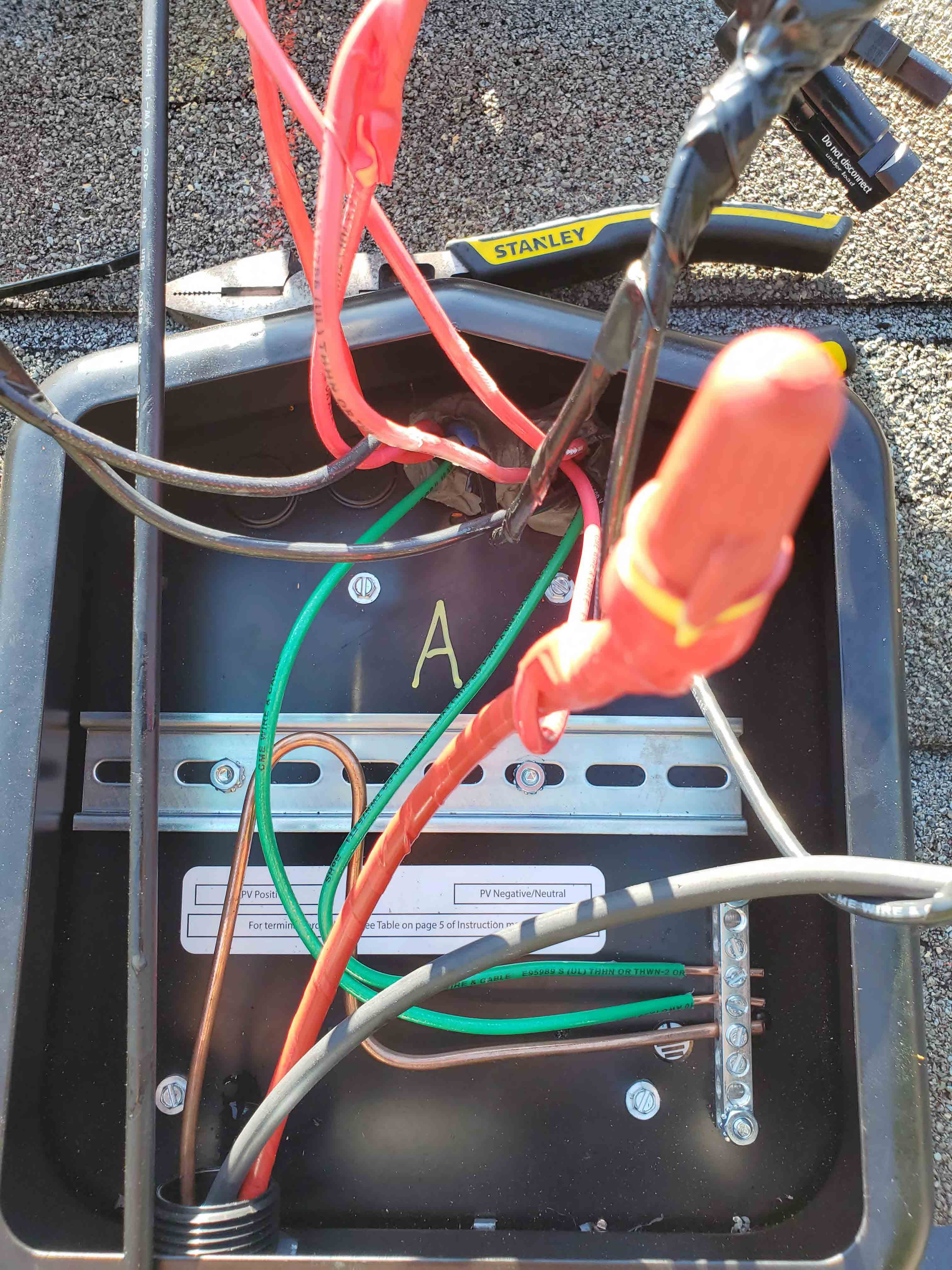












Sun Res -40°C VW-1 HangLin

STANLEY

Do not disconnect under load

A

PV Positive

PV Negative/Neutral

For termination, refer to the Table on page 5 of Instruction manual

E95989 S (UL) THHN OR THWN-2 OR

NEW WIRE

ENGINEERED, DESIGNED AND QUALITY TESTED BY Q CELLS IN GERMANY

Q.PEAK DUO BLK-G6+ 340

PERFORMANCE AT STANDARD TEST CONDITIONS*

Nominal Power* (+5W/-0W)	P_{MPP}	[W]	340
Short circuit current*	I_{SC}	[A]	10.52
Open circuit voltage*	V_{OC}	[V]	40.66
Current at maximum power	I_{MPP}	[A]	10.02
Voltage at maximum power	V_{MPP}	[V]	33.94
Maximum system voltage	V_{SYS}	[V]	1000(UL)
Weight	M	[kg/lbs]	19.9/43.9

*Measurement tolerances: $P_{MPP} \pm 3\%$; I_{SC} , $V_{OC} \pm 5\%$ at STC: $1000 W/m^2$, $25 \pm 2^\circ C$, AM 1.5 according to IEC 60904-3. Data given are rated (nominal) values.

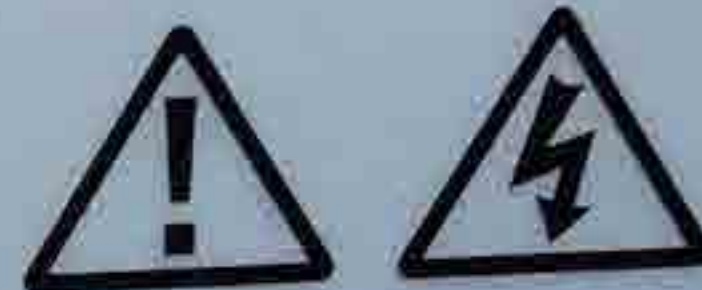


203221226531303900

Hanwha Q CELLS USA Inc.,
300 Nexus Drive, Dalton GA 30721, USA

Q CELLS

Assembled in USA



DANGER!

Risk of electric shock!

DO NOT connect or disconnect plug contacts while system is under load current. Refer to the Installation and Operation Manual before installing, operating or servicing this unit.

DANGER!

Risque de choc électrique!

NE PAS connecter ou déconnecter les connecteurs lorsque le système est en charge. Consultez le manuel d'installation et d'utilisation avant installation, utilisation et entretien du produit.

Fire Rating: Class C / Type 2

Design load: 55 lbs/ft²

Fuse Rating: 20 A

For field connections, use minimum No.12 AWG copper wires insulated for a minimum of 90°C

U.S. Patent No. 9,893,215
(solar cells)

EMAIL service@q-cells.com
WEB www.q-cells.com





