



**IRONRIDGE**  
Make Solar **Stronger**<sup>®</sup>

**BHW-SQ-02-A1 Rev A**



SQUARE-BOLT BONDING  
HARDWARE  
Unit Qty = 200



2420.75

Patent Pending







T14



ENGINEERED, DESIGNED AND QUALITY TESTED BY Q CELLS IN GERMANY

# Q.PEAK DUO BLK-G6+ 340

# Q CELLS

## PERFORMANCE AT STANDARD TEST CONDITIONS\*

Nominal Power* (+5W/-0W)	$P_{MPP}$	[W]	340
Short circuit current*	$I_{SC}$	[A]	10.52
Open circuit voltage*	$V_{OC}$	[V]	40.66
Current at maximum power	$I_{MPP}$	[A]	10.02
Voltage at maximum power	$V_{MPP}$	[V]	33.94
Maximum system voltage	$V_{SYS}$	[V]	1000(UL)
Weight	M	[kg / lbs]	19.9/43.9

Assembled in USA



**DANGER!**  
**Risk of electric shock!**  
DO NOT connect or disconnect plug contacts while system is under load current. Refer to the Installation and Operation Manual before installing, operating or servicing this unit.

**DANGER!**  
**Risque de choc électrique!**  
NE PAS connecter ou déconnecter les connecteurs lorsque le système est en charge. Consultez le manuel d'installation et d'utilisation avant installation, utilisation et entretien du produit.

**Fire Rating:** Class C / Type 2  
**Design load:** 55 lbs/ft<sup>2</sup>  
**Fuse Rating:** 20 A  
For field connections, use minimum No.12 AWG copper wires insulated for a minimum of 90°C

U.S. Patent No. 9,893,215  
(solar cells)

**EMAIL** [service@q-cells.com](mailto:service@q-cells.com)  
**WEB** [www.q-cells.com](http://www.q-cells.com)

\*Measurement tolerances:  $P_{MPP} \pm 3\%$ ;  $I_{SC}$ ,  $V_{OC} \pm 5\%$  at STC: 1000 W/m<sup>2</sup>, 25±2°C, AM 1.5 according to IEC 60904-3. Data given are rated (nominal) values.



203221226531303067

Hanwha Q CELLS USA Inc.,  
300 Nexus Drive, Dalton GA 30721, USA







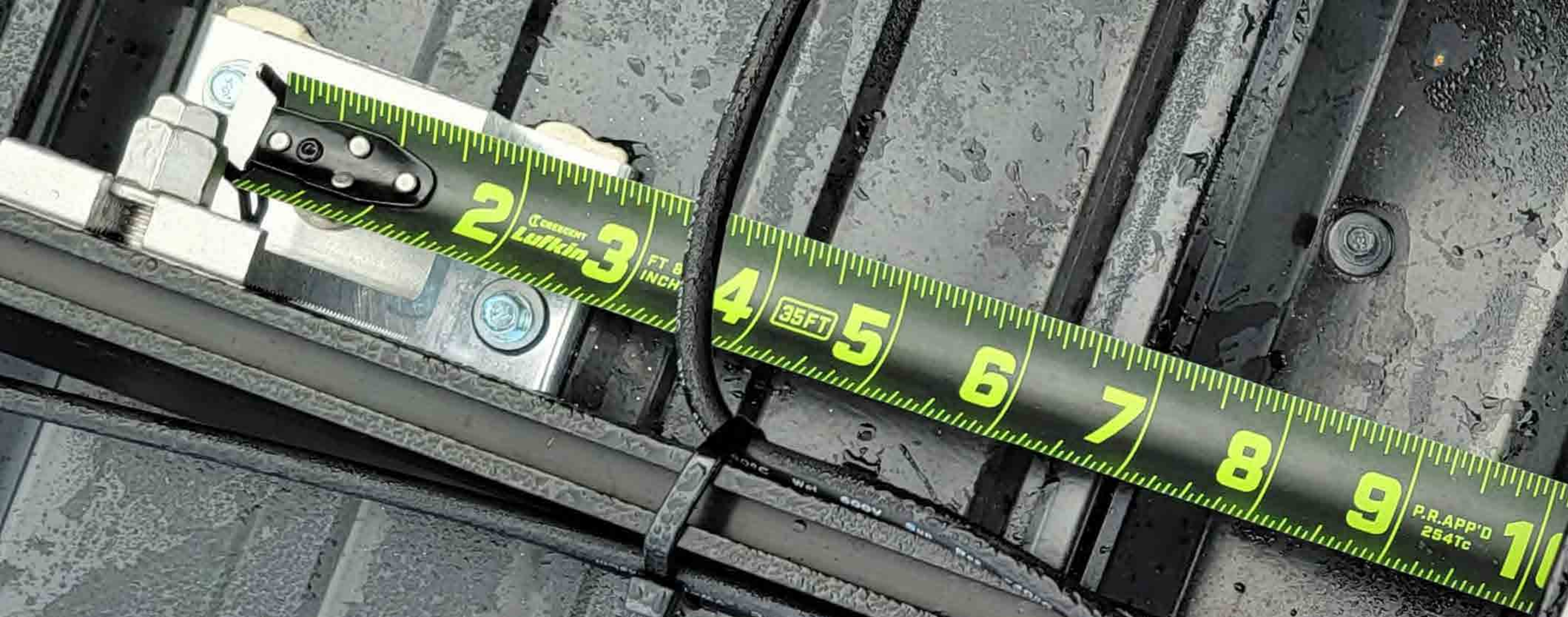






2 3 4 5 6 7 8 9 10 11 12 13 14 15 16 17 18 19 20 21 22 23 24 25 26 27 28 29 30





**CAUTION**  
HOT SURFACES: TO REDUCE THE RISK OF BURNS, DO NOT TOUCH.  
RISK OF ELECTRIC SHOCK: WHEN THE PHOTOVOLTAIC ARRAY IS EXPOSED TO EQUIPMENT, COVER PV MODULE WITH OPAQUE MATERIAL BEFORE CONNECTING OR DISCONNECTING THIS OPTIMIZER DURING FAULT. ZERO CURRENT IS SOURCED INTO DC ARRAY BY CONVERTER.  
SYSTEM ARE UNGROUND AND MAY BE ENERGIZED.  
WARNING ELECTRIC SHOCK HAZARD. THE DC CONDUCTORS OF THIS PHOTOVOLTAIC

**AVERTISSEMENT**  
RISQUE DE CHOC ELECTRIQUE: QUAND LE CHAMP PHOTOVOLTAIQUE EST EXPOSE A LA LUMIERE, UNE TENSION CC EST FOURNIE A CET EQUIPEMENT. SURFACES CHAUDES: NE PAS TOUCHER. AFIN DE RETOURNER LES RISQUES DE BRULURES, NE PAS TOUCHER L'OPTIMISER EN CAS DE DEFILLANCE DANS LE MODULE PV EST TOUJOURS NUL.

Do Not Remove  
2107CC4.5A  
UL  
ETL  
4005590  
Inteltek

FC

35FT

P.R.App'd  
254Tc

500°C  
-400°C  
VW-1  
Henglin

17 18 19 20





Do Not Remove

2167ECE4-58



Intertek  
4004590



### CAUTION

HOT SURFACES-TO REDUCE THE RISK OF BURNS-DO NOT TOUCH.  
RISK OF ELECTRIC SHOCK-WHEN THE PHOTOVOLTAIC ARRAY IS EXPOSED TO LIGHT, IT SUPPLIES A DC VOLTAGE TO EQUIPMENT. COVER PV MODULE WITH OPAQUE MATERIAL BEFORE CONNECTING OR DISCONNECTING THIS OPTIMIZER.  
DURING FAULT, ZERO CURRENT IS SOURCED INTO DC ARRAY BY CONVERTER.

**WARNING** ELECTRIC SHOCK HAZARD. THE DC CONDUCTORS OF THIS PHOTOVOLTAIC SYSTEM ARE UNGROUNDED AND MAY BE ENERGIZED.

### AVERTISSEMENT

RISQUE DE CHOC ELECTRIQUE: QUAND LE CHAMP PHOTOVOLTAIQUE EST EXPOSE A LA LUMIERE, UNE TENSION CC EST FOURNIE A CET EQUIPEMENT.  
SURFACES CHAUDES: NE PAS TOUCHER, AFIN DE REDUIRE LES RISQUES DE BRULURES LE COURANT DE RETOUR INJECTE PAR LE CONVERTISSEUR EN CAS DE DEFAILLANCE DANS LE MODULE PV EST TOUJOURS NUL.

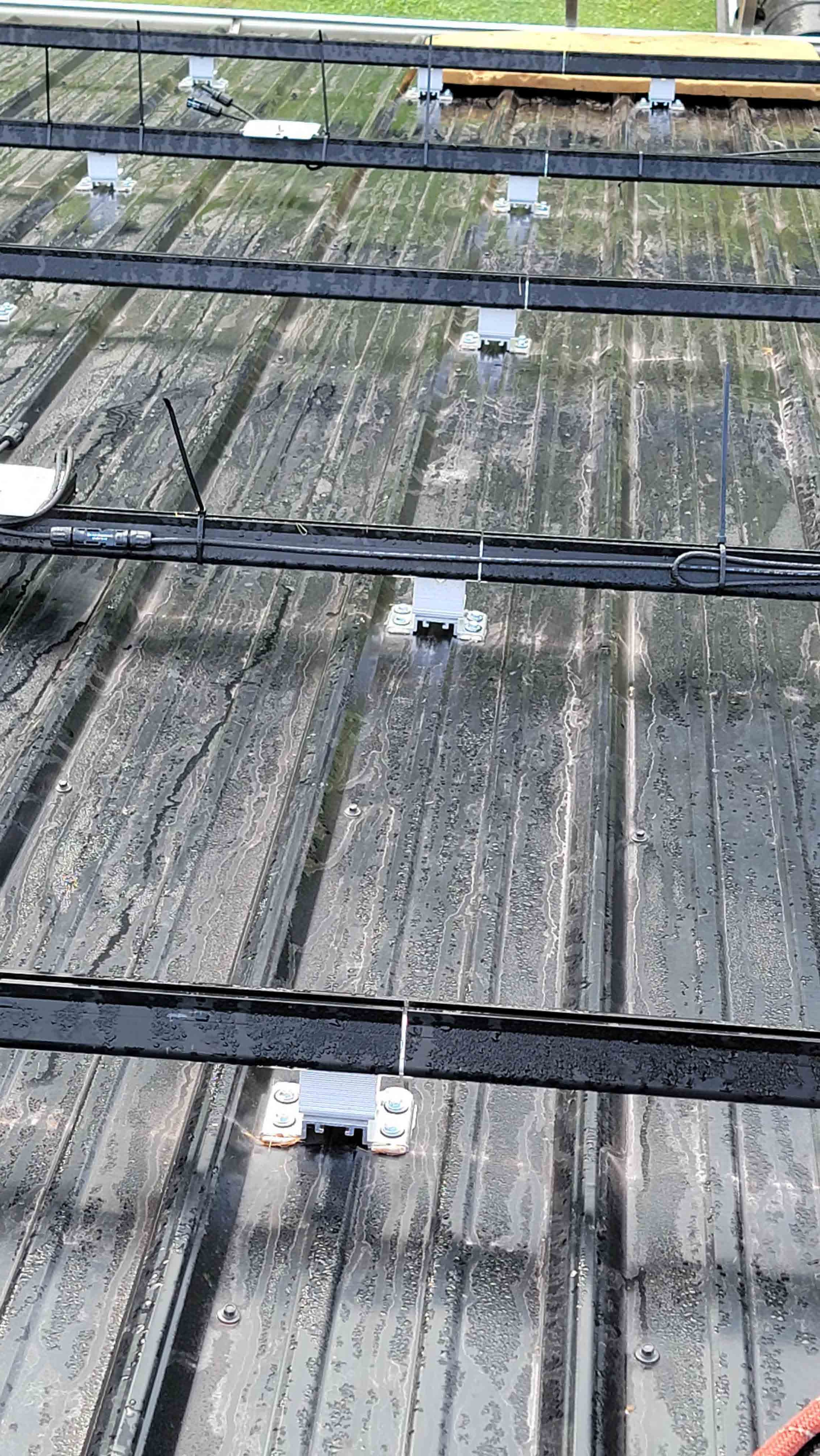


600V SUN  
600V WALL  
600V SUN  
600V WALL









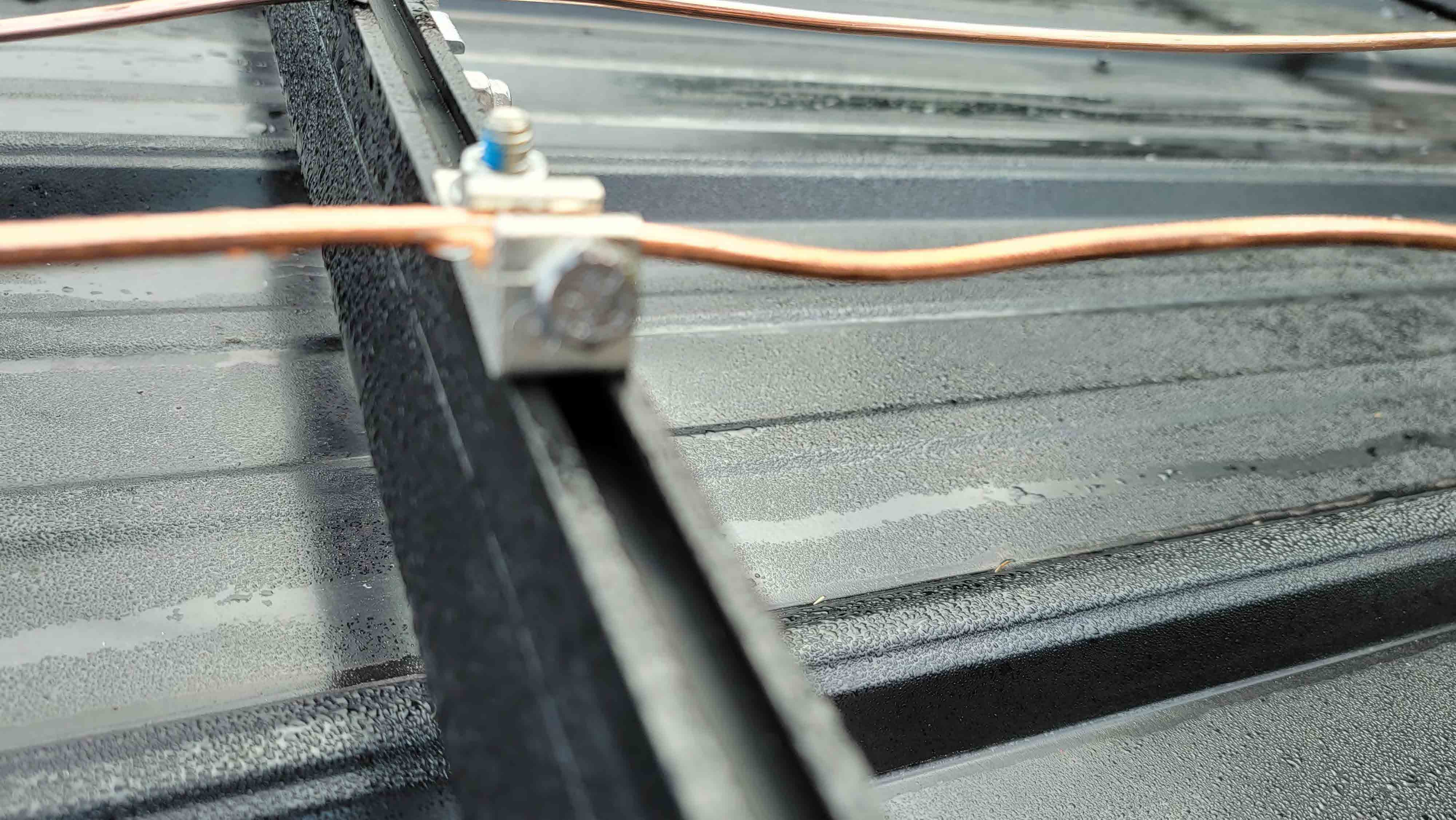




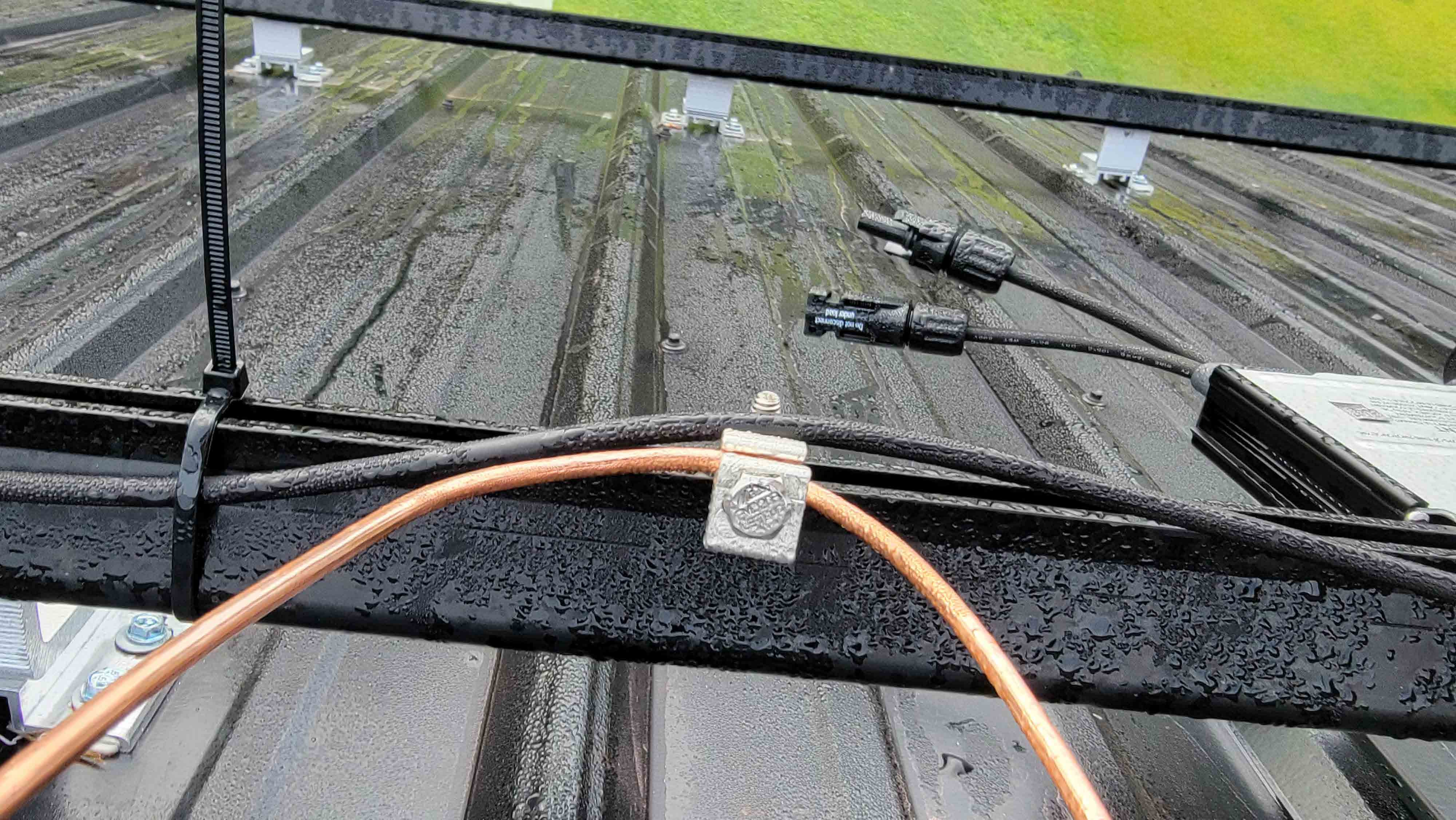




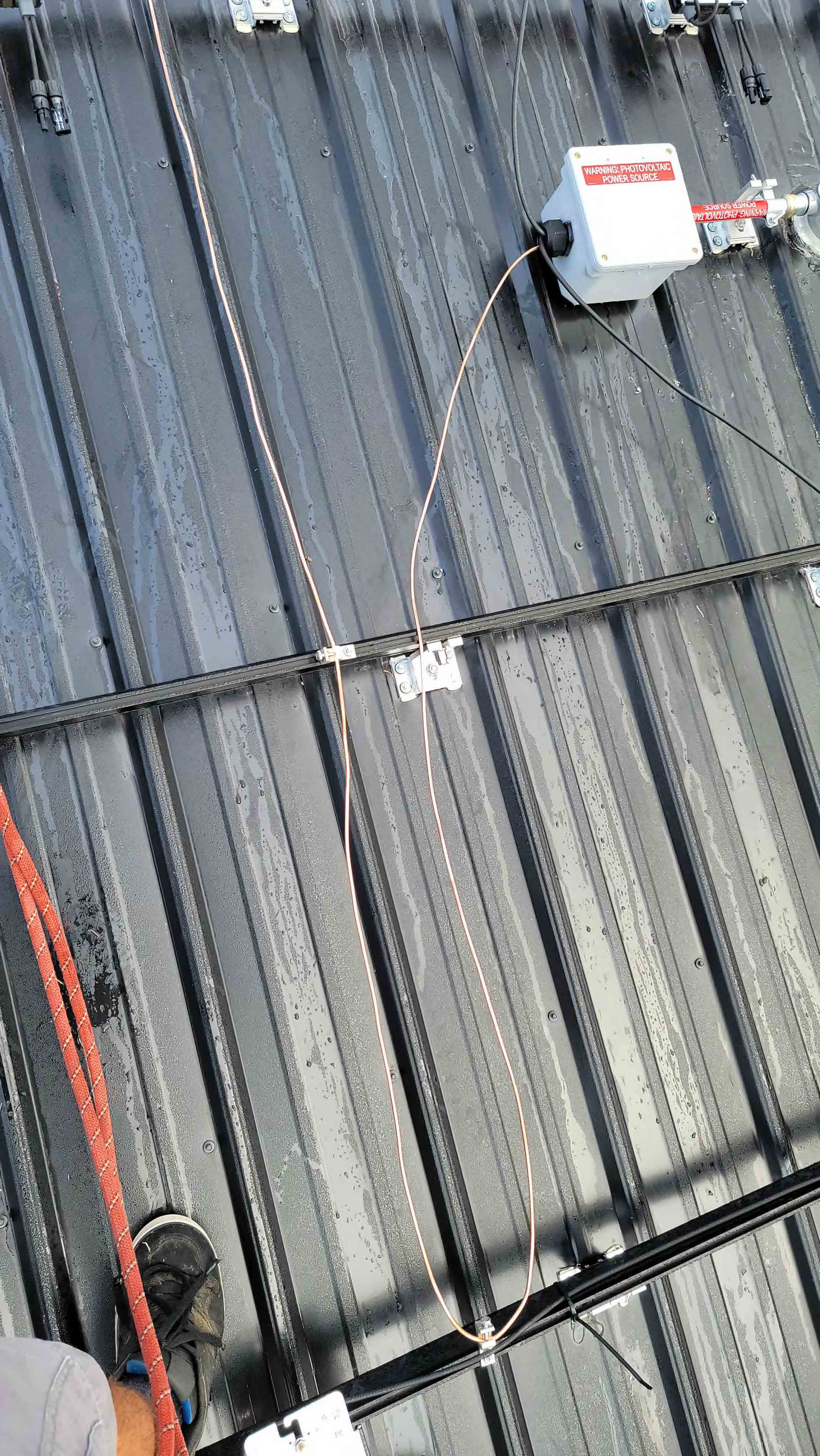




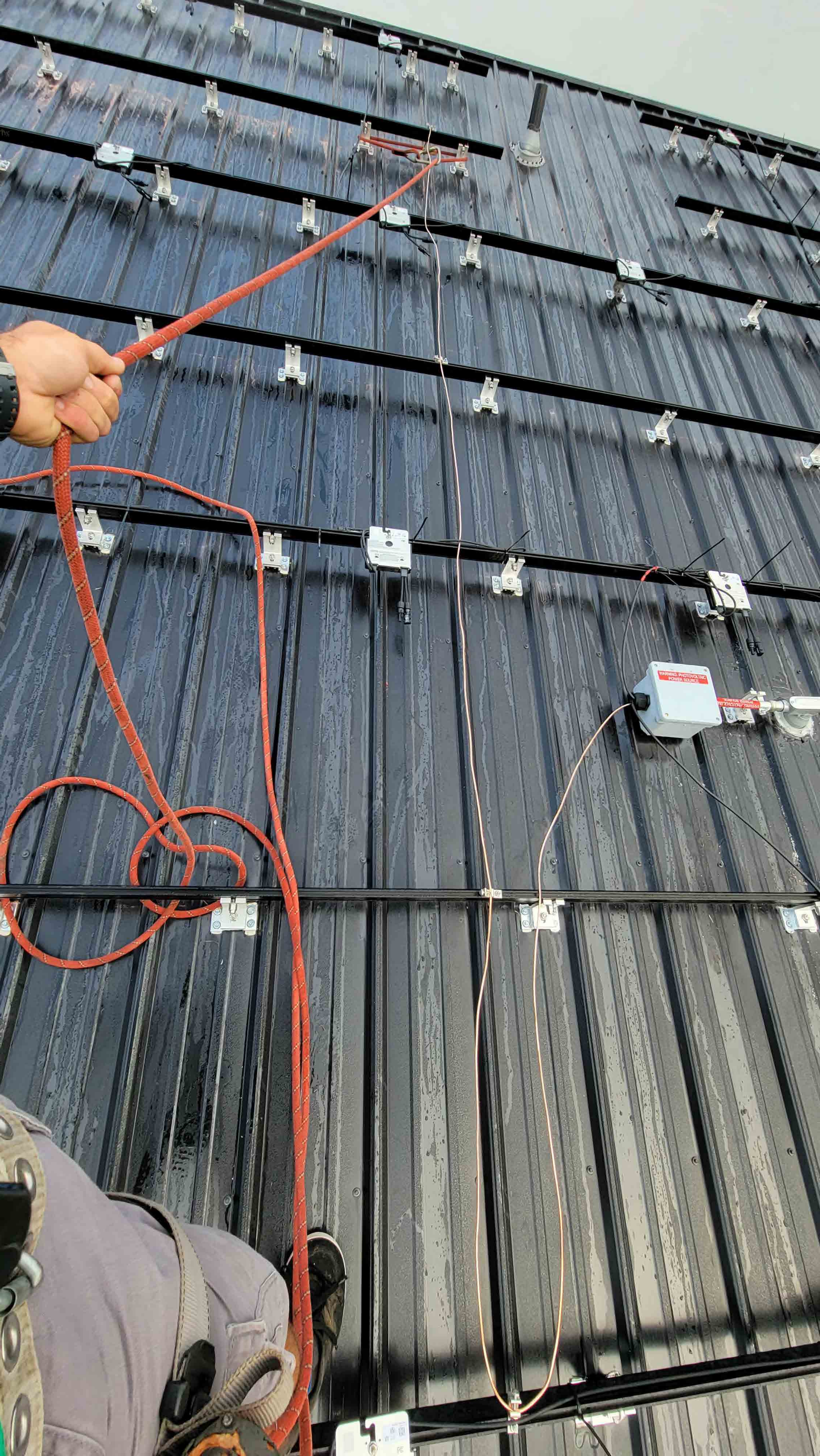












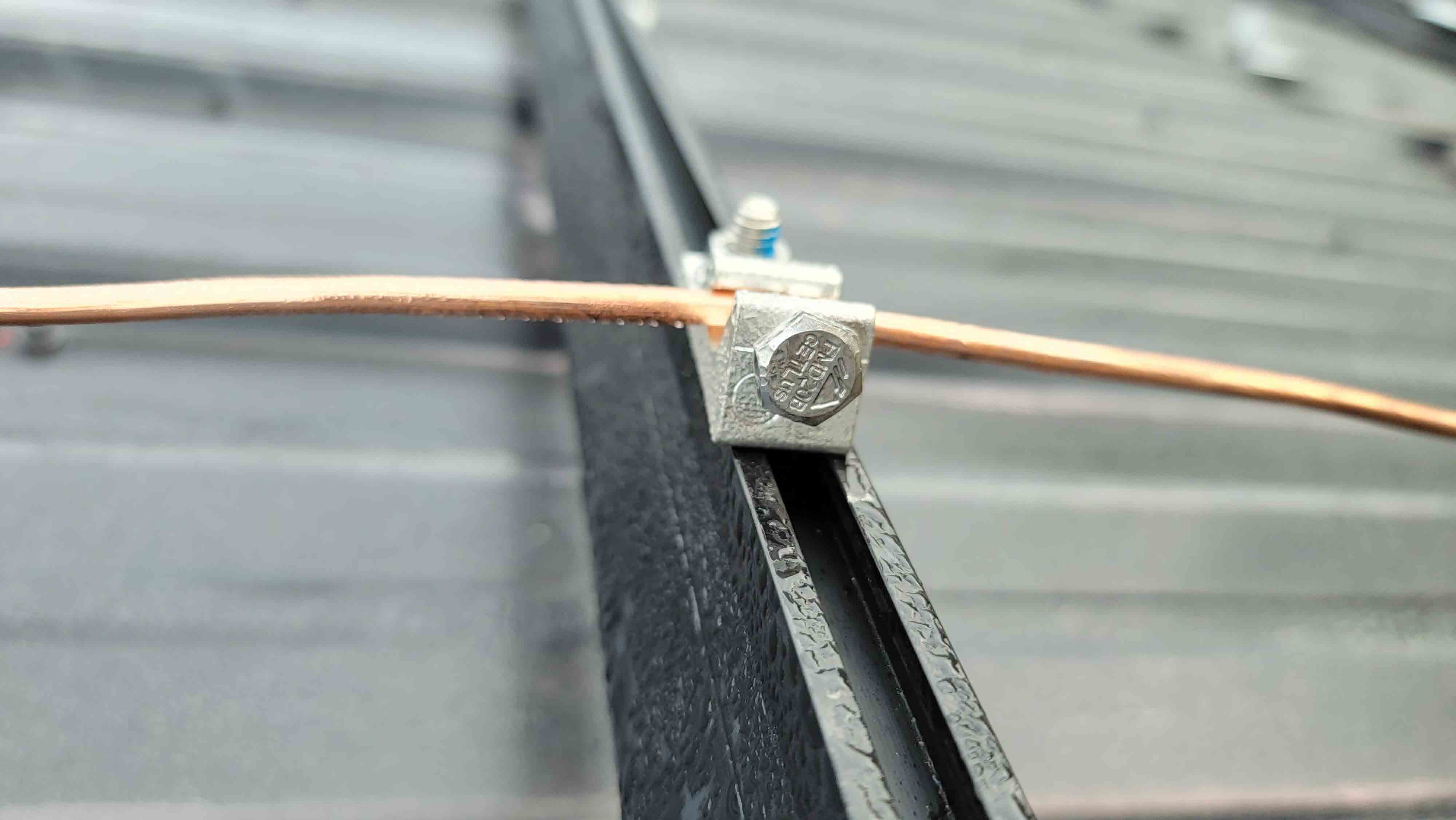




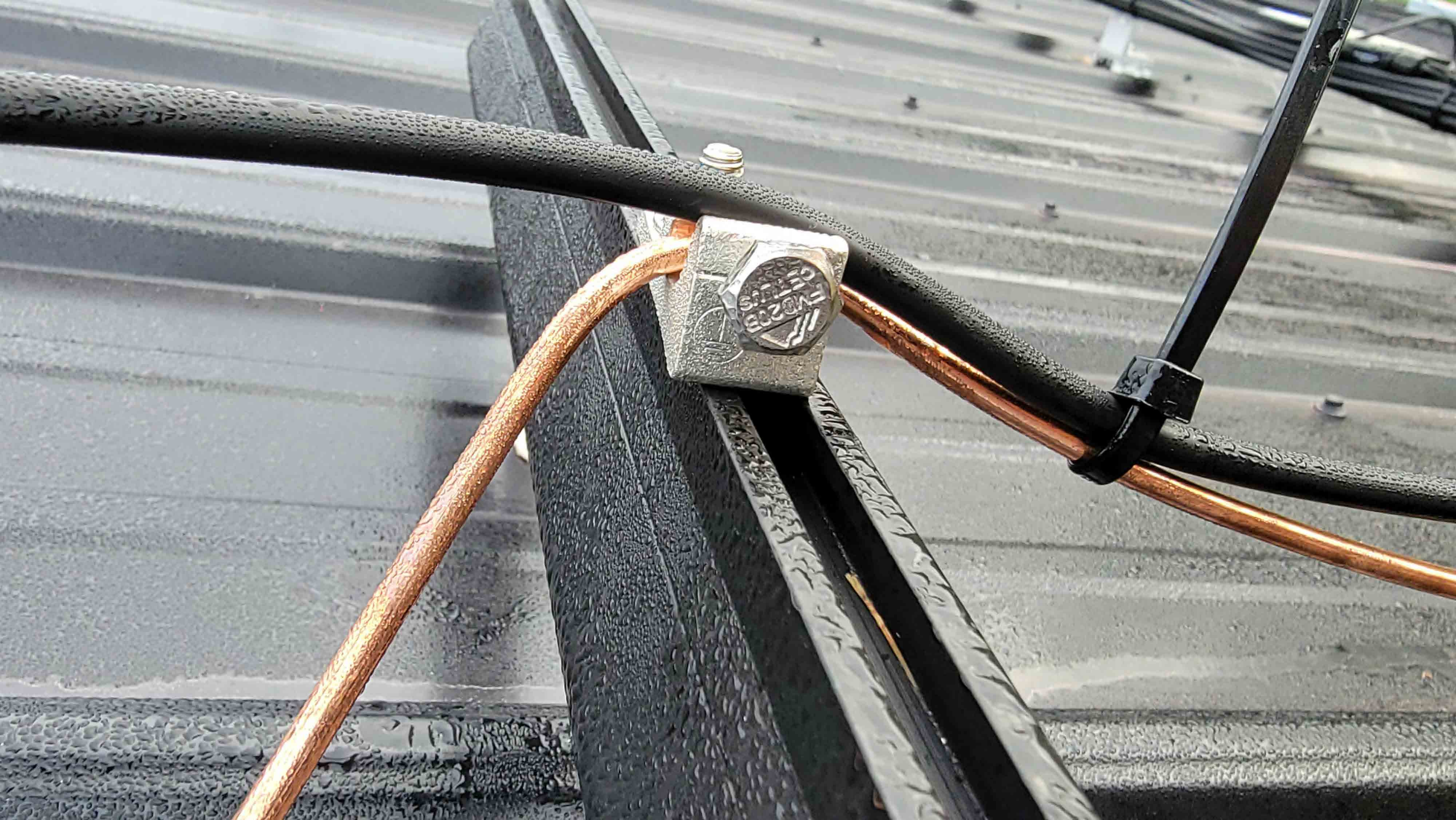




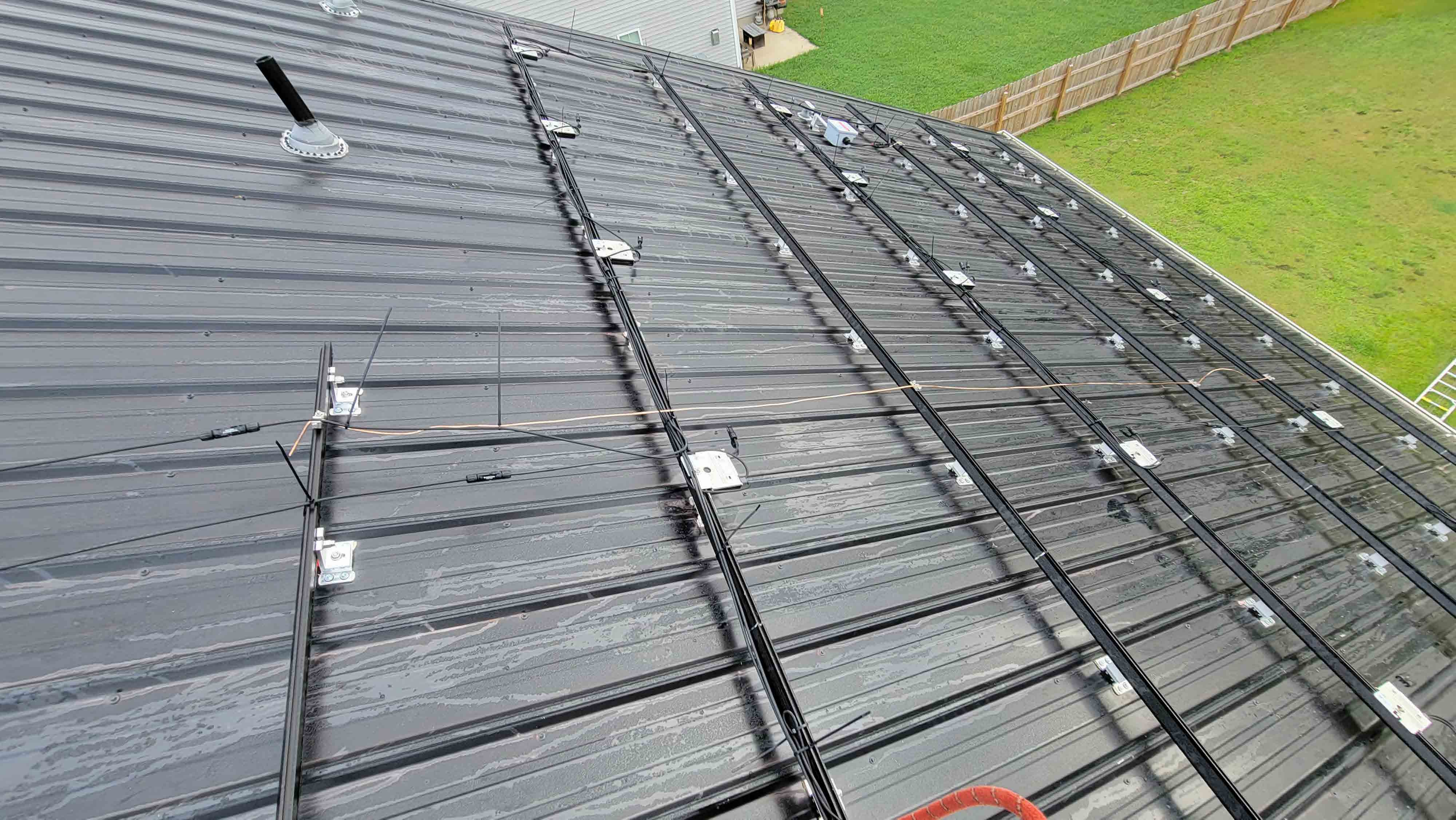




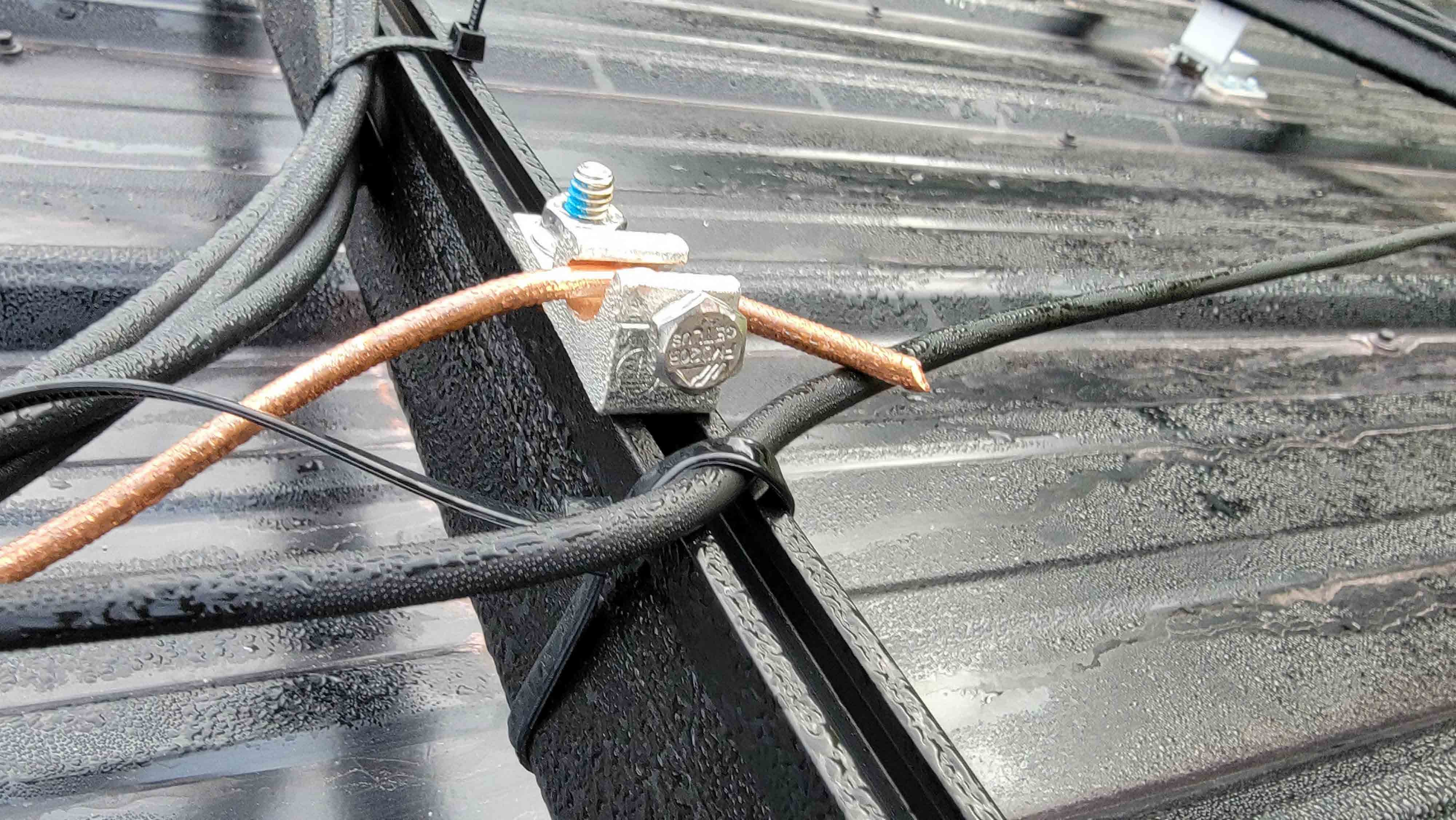
















WARNING: PHOTOVOLT

WARNING: PHOTOVOLTAIC  
POWER SOURCE

INVERTER



**WARNING: PHOTOVOLTAIC  
POWER SOURCE**

JB 6x6x4

NEVER OPEN THIS BOX WHILE THE SYSTEM IS ENERGIZED. ALWAYS USE THE PROPER SAFETY PROCEDURES AND WEAR THE APPROPRIATE PPE. ALWAYS USE THE PROPER WIRING METHODS AND FOLLOW THE MANUFACTURER'S INSTRUCTIONS. ALWAYS USE THE PROPER WIRING METHODS AND FOLLOW THE MANUFACTURER'S INSTRUCTIONS.

NEVER OPEN THIS BOX WHILE THE SYSTEM IS ENERGIZED. ALWAYS USE THE PROPER SAFETY PROCEDURES AND WEAR THE APPROPRIATE PPE. ALWAYS USE THE PROPER WIRING METHODS AND FOLLOW THE MANUFACTURER'S INSTRUCTIONS.

NEVER OPEN THIS BOX WHILE THE SYSTEM IS ENERGIZED. ALWAYS USE THE PROPER SAFETY PROCEDURES AND WEAR THE APPROPRIATE PPE. ALWAYS USE THE PROPER WIRING METHODS AND FOLLOW THE MANUFACTURER'S INSTRUCTIONS.







KRALOY

IP. 12, 13

CONDUIT  
IN. IN USA  
TION SHEET  
INSTALLATION.

CONDUIT  
G AND MUST BE  
INSTALLATION.

DES MASSES ENTRE  
PAS ASSURÉE



**UL** **POLARIS**  
c<sub>us</sub> TT4  
LISTED 4-14 AWG  
35GF CU9AL 600V  
WIRE CONNECTOR







WARNING: PHOTOVOLTAIC  
POWER SOURCE

WARNING: PHOTOVOLTAIC  
POWER SOURCE

12 6x6x4

NOTICE: BONDING BETWEEN CONDUCTIVE  
CHOICES IS NOT NECESSARY AND MUST BE  
CONSULTED IN YOUR PARTICULAR AREA.  
THE LA CONTRACTORS TEST FOR GROUNDING  
EFFECTIVENESS. SEE SECTION 26.01.00

TSMAN





2

"DUST TIGHT"  
GP. 12.13  
E-CONG  
SHEET  
INSTALLATION.P.

TO INSTALL  
PART OF  
UNITS METALL  
ROTTER SEUL





**WARNING: PHOTOVOLTAIC  
POWER SOURCE**

**WARNING: PHOTOVOLTAIC  
POWER SOURCE**



**WARNING: PHOTOVOLTAIC  
POWER SOURCE**

**WARNING: PHOTOVOLTAIC  
POWER SOURCE**





**WARNING: PHOTOVOLTAIC  
POWER SOURCE**

**WARNING: PHOTOVOLTAIC**



TERN TUBE-224132 2014 EMT MADE IN USA



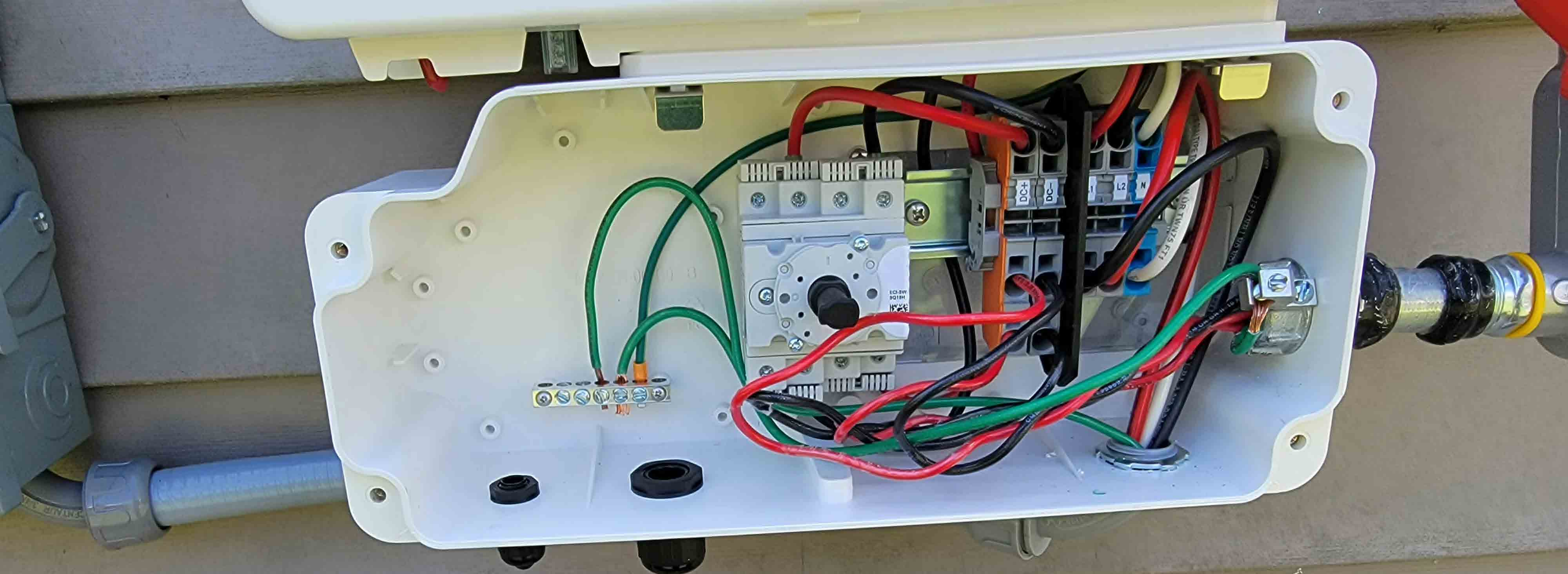


NYLON OR TWN75 FLL

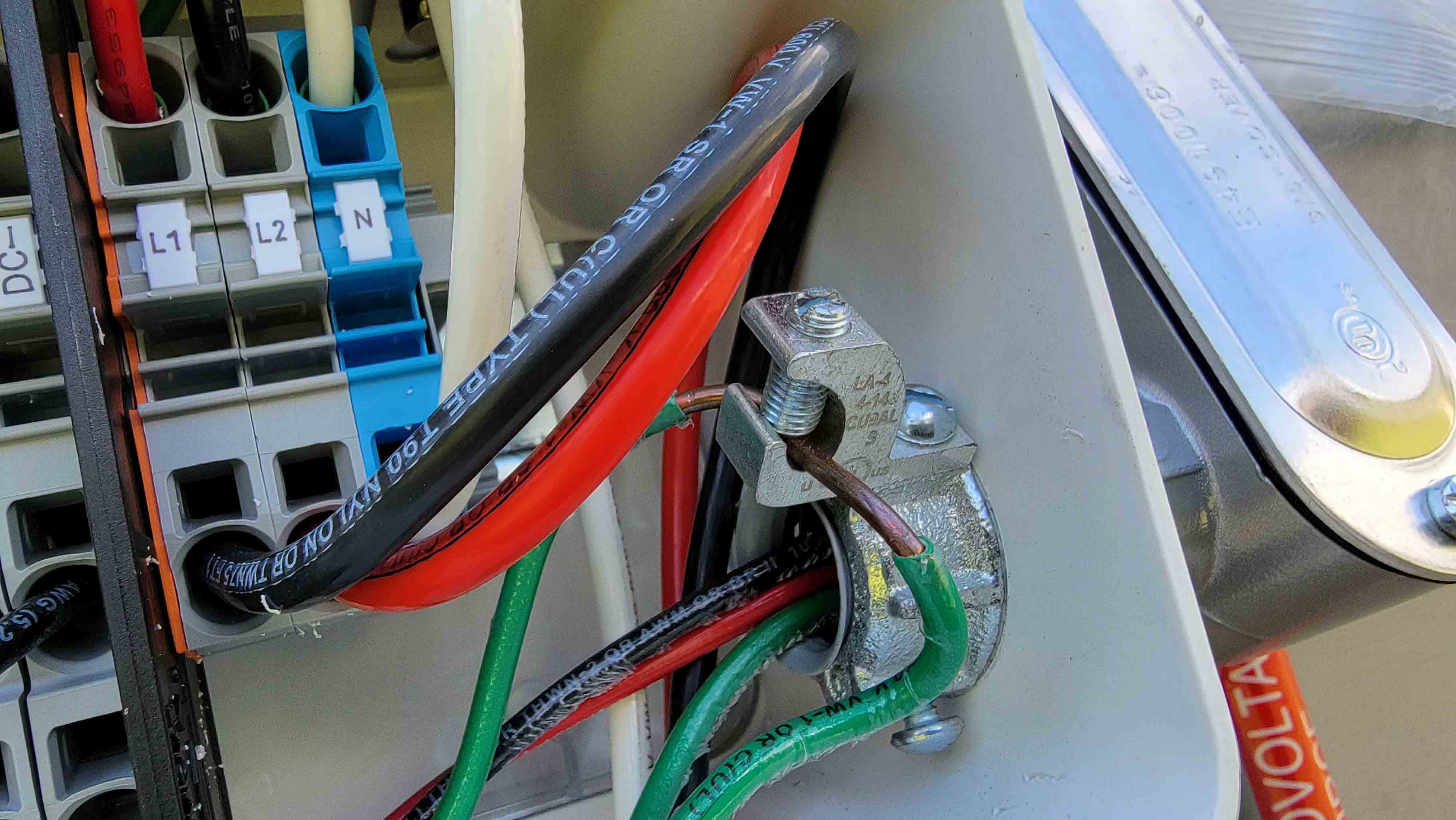
NYLON OR TWN75 FLL

NYLON OR TWN75 FLL









DC-

L1

L2

N

TYPE 100 NYLON OR TWIN 5 FT  
SP OR CU

LA-4  
4-14  
CUGAL  
3

10 VOLTA



**RAPID SHUTDOWN SWITCH FOR SOLAR PV SYSTEM**

**GENERAL DUTY SAFETY SWITCH INTERRUPTOR DE SEGURIDAD DE SERVICIO GENERAL**  
60 A  
240 Vac / V-

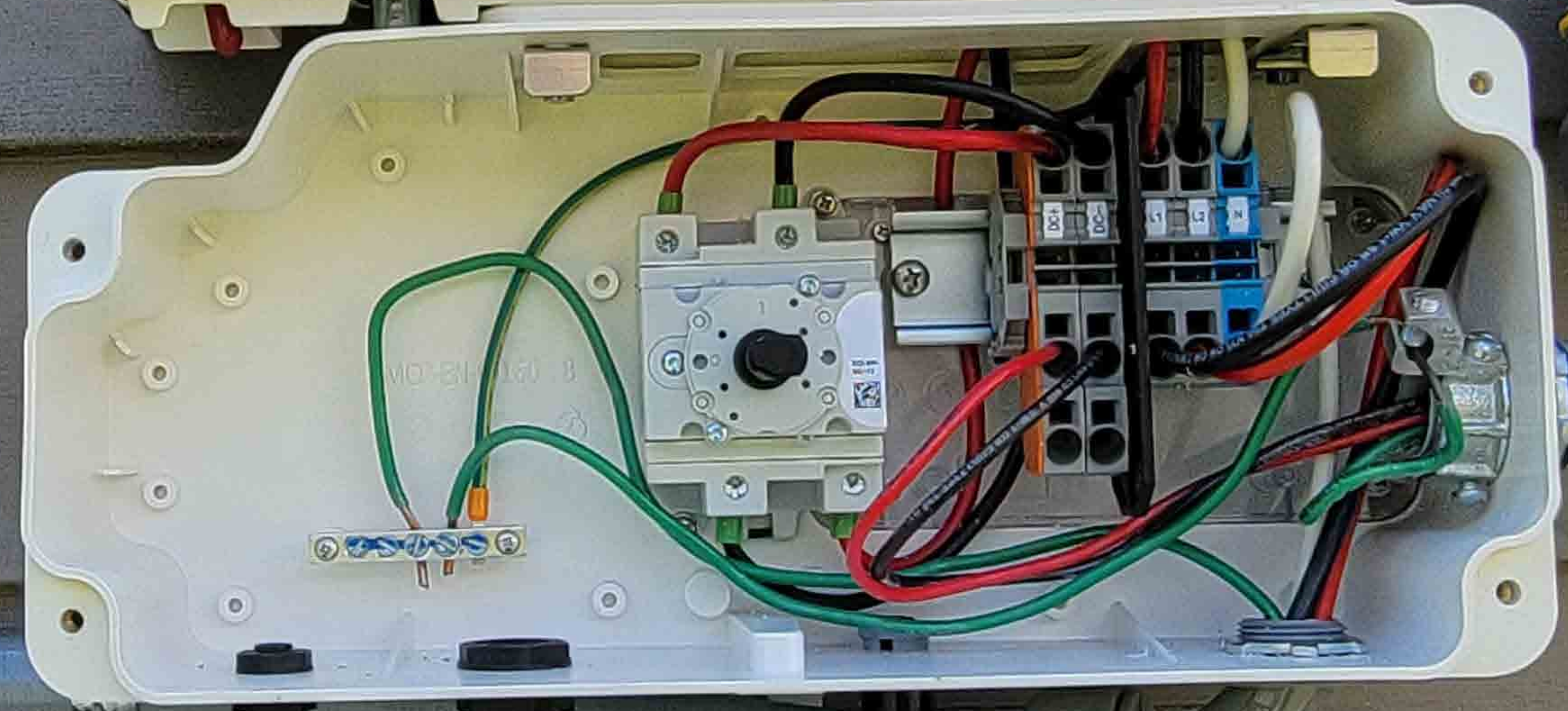
**⚠ DANGER / PELIGRO**  
Hazard of electric shock, explosion, or arc flash.  
PELIGRO DE DESCARGA ELÉCTRICA, EXPLOSIÓN O DESTELLO POR ARQUEO

**PHOTOVOLTAIC POWER SOURCE**  
OPERATING AC VOLTAGE 240 V  
MAXIMUM OPERATING AC OUTPUT CURRENT 25 A

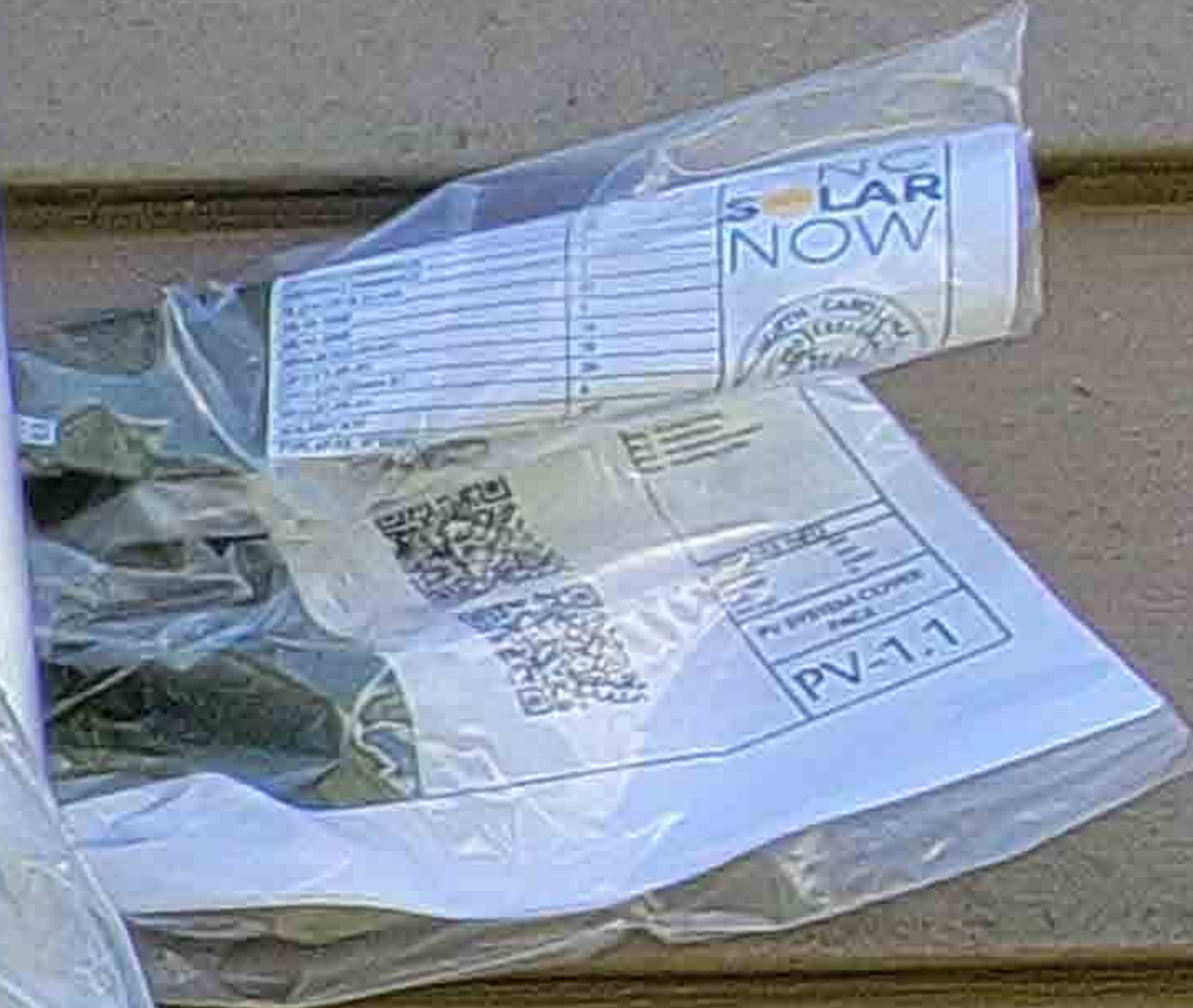
**EMERGENCY DISCONNECT**  
DESCONEXIÓN DE EMERGENCIA

**solar**edge

HD wave



**WARNING: PHOTOVOLTAIC POWER SOURCE**















WARNING: POWER

WARNING: POWER

CSOLARNOW  
www.ncsolarnow.com





WARNING:  
POWER