



CAUTION  
DO NOT TOUCH THE SURFACE OF THE PANEL  
OR THE WIRING. THE SURFACE OF THE PANEL  
IS HOT TO THE TOUCH.  
DO NOT TOUCH THE SURFACE OF THE PANEL  
OR THE WIRING. THE SURFACE OF THE PANEL  
IS HOT TO THE TOUCH.

2 3 4 5 6 7 8 9 10 11 12 13 14 15 16 17 18 19 20 21 22 23 24 25 26 27 28 29 30 31 32 33 34 35 36 37 38 39 40 41 42 43 44 45 46 47

48



WARNING  
HOT TOUCH TAPES  
HOT SOURCE  
AIR CIRCUIT

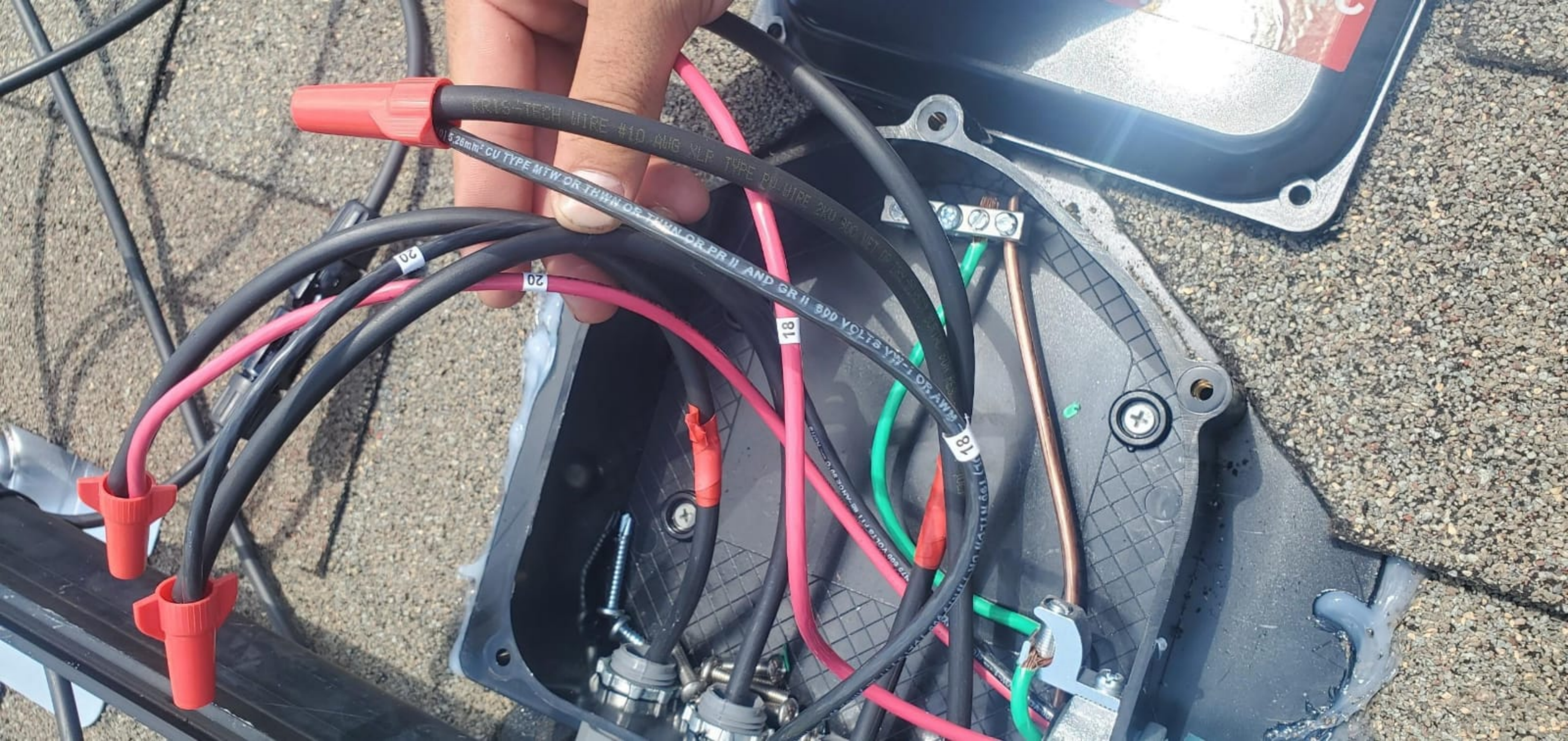






Do Not Remove  
RSCA PER 8-5-04  
FC  
AVERTISSEMENT  
PR APPD  
PTA: 19-482





KRIS-TECH WIRE #10 AWG XLF TYPE PU WIRE 2KV 500 VET  
1.526mm<sup>2</sup> CU TYPE MTW OR THWN OR THWN OR PR II AND GR II 600 VOLTS YW-1 OR AWB

20

20

18

18



WARNING: PHOTOVOLTAIC  
POWER SOURCE

CAUTION: SOLAR CIRCUIT

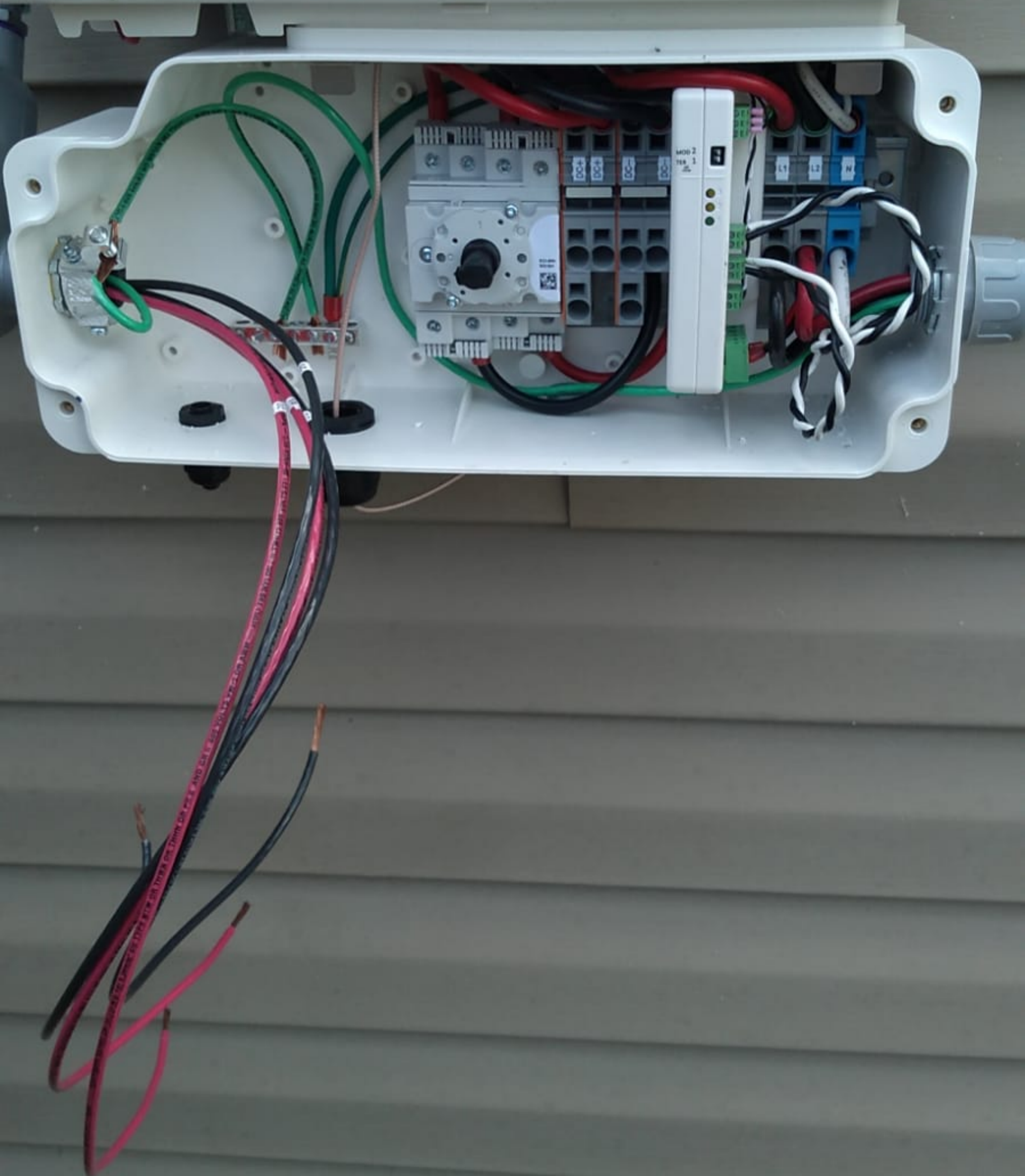
WARNING: PHOTOVOLTAIC  
POWER SOURCE

RIDGID

RIDGID

solar**edge**

**HD** wave







**solareedge** SE10000H – US

**Grid Support Utility Interactive  
Non – Isolated Photovoltaic Inverter**

Operating Voltage Range	380 – 480Vdc
Max Input Current	27Adc
Max Continuous Output Power	10000Wac
Voltage Min – Nom – Max	211 – 240 – 264Vac
Max Continuous Output Current	42Aac
Max Output Fault Current	56.6Aac
Max Utility Backfeed Current	0Aac
Frequency Min – Nom – Max	59.3 – 60.0 – 60.5Hz
Output Power Factor	+/- 0.85 – 1
Max Ambient Temperature	60 C
Enclosure	IP65 / Type 3R
With integrated ground fault protection per NEC 690.35 (C)	
Type 1 Photovoltaic Arc – Fault Circuit – Protection	

**Wi – Fi Password: Hp1n7N!c**  
**Activation:5x7z QF/z wBre 4AtX pR6l hZ5c l30 =**

**WiFi MAC:**  
**28:B7:7C:11:AD:58**  
**ZigBee MAC:**



**Intertek**  
**4004590**



**PN: SE10000H – US000BNI4**  
**SN: SJ4520 – 0740125C0 – 5A**





**REC Alpha Black Series**  
**REC365AA Black**  
 Serial Number: FBB-4008377441

Phone: +65 6495 9228  
 www.recgroup.com

Power Output (Pmax)	365 W
Watt Class Sorting	0/+5 W
Power Production Tolerance	+/- 3 %
Rated Voltage (Vmpp)	37.1 V
Rated Current (Impp)	9.85 A
Open Circuit Voltage (Voc) (+/- 3%)	44.0 V
Short Circuit Current (Isc) (+/- 3%)	10.52 A
Maximum System Voltage (Vsys)	1000 V
Maximum Series Fuse (DC) (UL)	25 A
Maximum Series Fuse (DC) (IEC)	25 A
Design Load	+4666 / -2666 Pa*
Maximum Test Load	+7000 / -4000 Pa*

(Values at STC: 1000 W/m<sup>2</sup>AM 1.5, cell temp 25°C)



- Conforms to UL Std. 61730-1/-2
- Certified to CSA Std. C22.2#61730-1/-2
- UL Fire Rating Type 2<sup>†</sup>



- IEC 61215
- IEC 61730



Application Class: Safety Class II

See installation manual for \*) mechanical installation requirements and †) installation requirements to achieve a specified system fire class

Manufactured: 04.04.2021

**Warning electrical hazard.** This module produces electricity when exposed to light. Follow all applicable electricity safety precautions. Only qualified personnel should install or perform maintenance work on the module. Be aware of dangerous high DC voltage when connecting or disconnecting modules. Do not damage or scratch the rear surface of the module. Do not handle or install modules when they are wet. Refer to installation and operation manuals before installing, servicing or operating this unit.

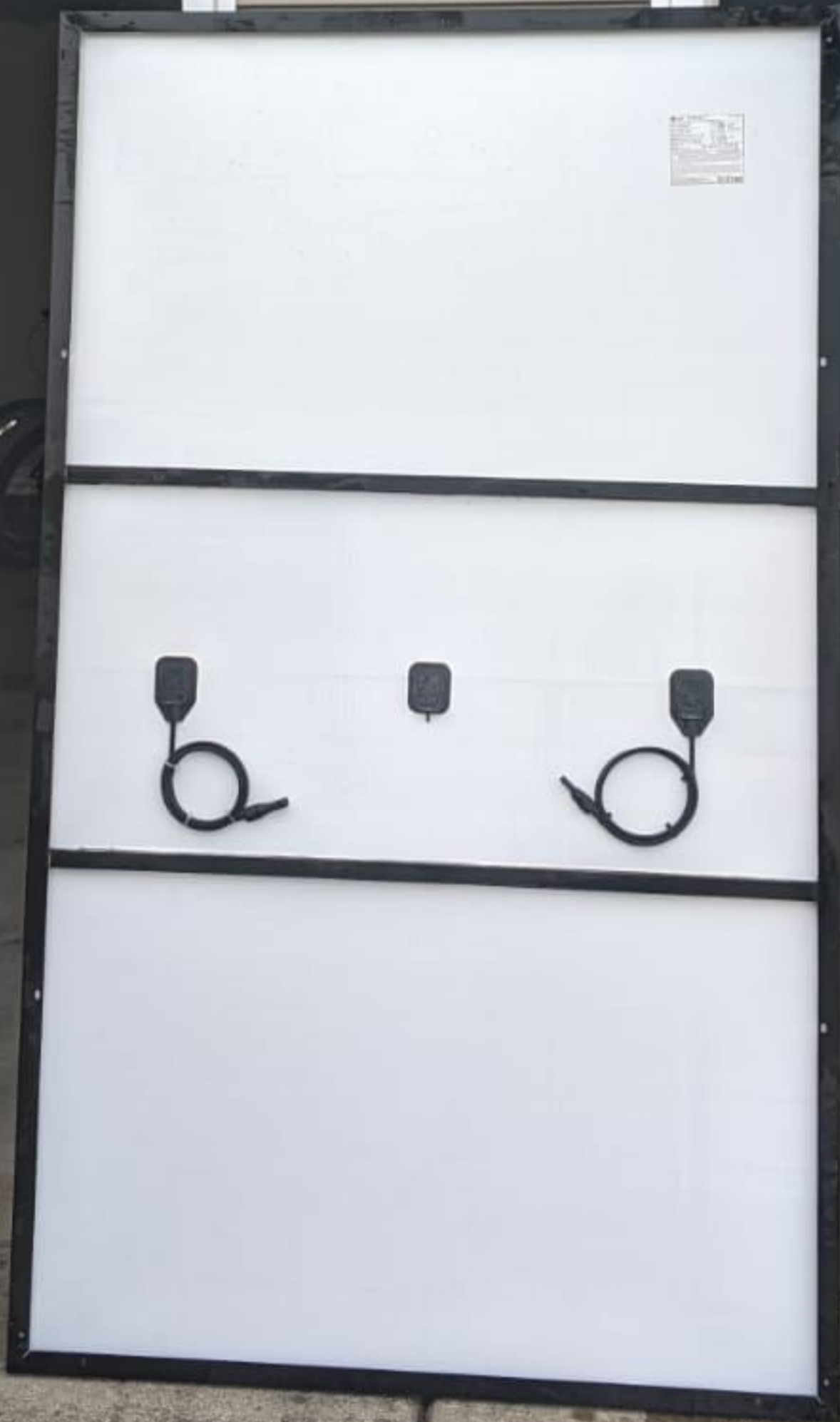
**Avertissement: Risque de choc électrique.** Ce module solaire produit de l'électricité lorsqu'il est exposé à la lumière. Respecter toutes les précautions de sécurité applicables. L'installation, la mise en service, l'entretien et la réparation du module, doivent être réalisés que par du personnel qualifié. Attention aux éléments sous haute-tension CC pendant la connexion ou déconnexion des modules. Eviter d'endommager la surface arrière du module avec des objets pointus. Ne pas manipuler ni installer les modules s'ils sont humides. Référez vous au manuel d'installation avant l'installation, l'entretien ou l'opération de cet unité.

For field connections, use min. 4 mm<sup>2</sup>(12 AWG) UL PV wires insulated for a min. of 90°C

**CAUTION: DO NOT DISCONNECT UNDER LOAD**  
**ATTENTION: NE PAS DECONNECTER SOUS TENSION**  
 Made in Singapore by REC SOLAR PTE. LTD.  
 20 TUAS SOUTH AVENUE 14, SINGAPORE 637312, SINGAPORE



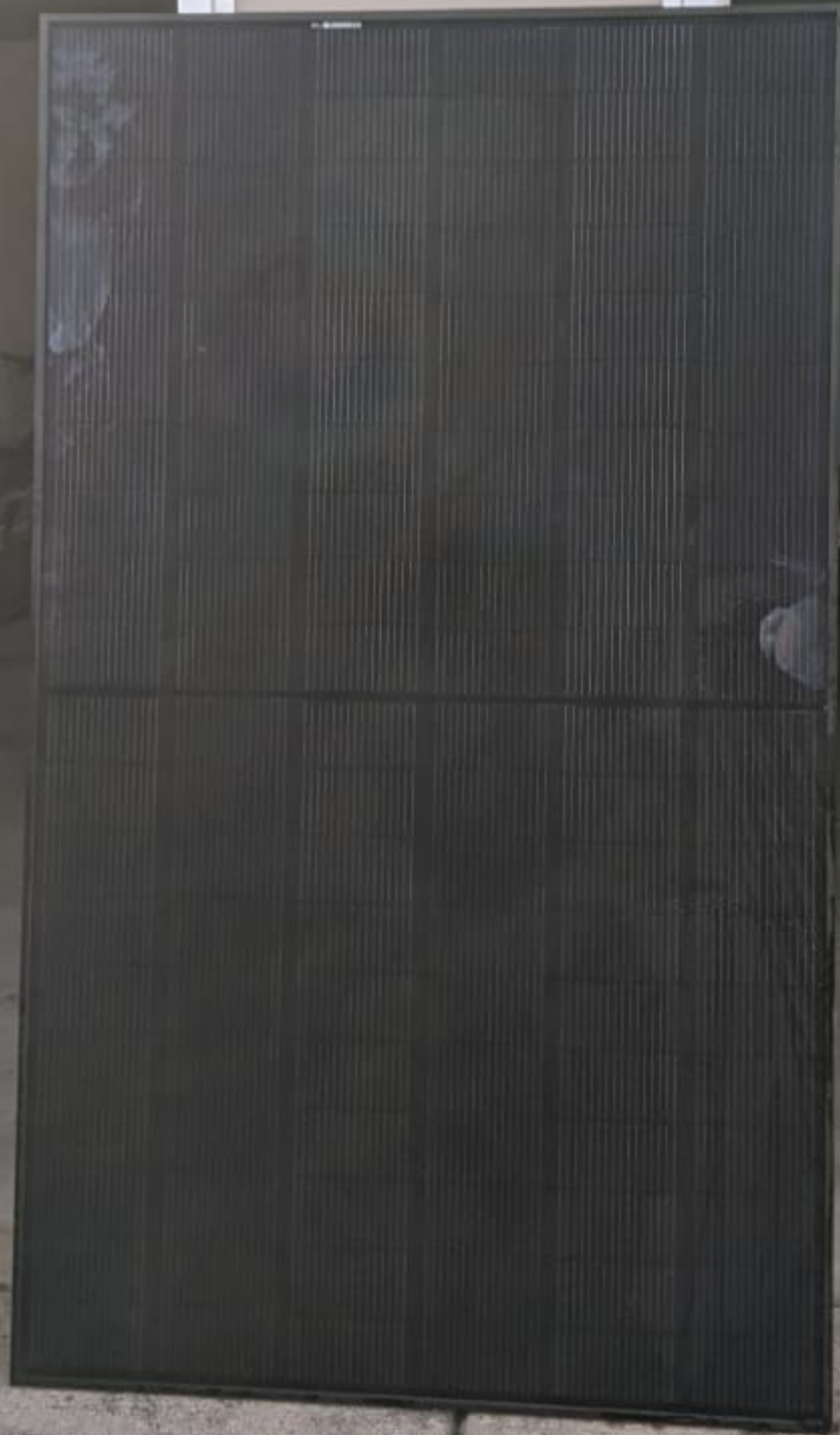
44







44











**IRONRIDGE**

Make Solar **Stronger.**

**XR-10-168B Rev E**



XR10, RAIL 168" (14 FEET) BLACK

Unit Qty = 4

4720:08

IR-Patents.com

**⚠ WARNING:** This product may contain chemicals that are known to the State of California to cause cancer, birth defects, or other reproductive harm. For more information go to [www.P65Warnings.ca.gov](http://www.P65Warnings.ca.gov).





SolarEdge  
Power Optimizer

solaredge.com  
Power Optimizer























Solar  
TECH

020C11879-72



Do Not Remove

20C11879-72



Intertek  
4004590



### CAUTION

HOT SURFACES-TO REDUCE THE RISK OF BURNS-DO NOT TOUCH.  
RISK OF ELECTRIC SHOCK-WHEN THE PHOTOVOLTAIC ARRAY IS EXPOSED TO LIGHT, IT SUPPLIES A DC VOLTAGE TO EQUIPMENT. COVER PV MODULE WITH OPAQUE MATERIAL BEFORE CONNECTING OR DISCONNECTING THIS OPTIMIZER.  
DURING FAULT, ZERO CURRENT IS SOURCED INTO DC ARRAY BY CONVERTER.

**WARNING** ELECTRIC SHOCK HAZARD. THE DC CONDUCTORS OF THIS PHOTOVOLTAIC SYSTEM ARE UNGROUNDED AND MAY BE ENERGIZED.



**AVERTISSEMENT**  
RISQUE DE CHOC ELECTRIQUE: QUAND LE CHAMP PHOTOVOLTAIQUE EST EXPOSE A LA LUMIERE, UNE TENSION CC EST FOURNIE A CET EQUIPEMENT.  
SURFACES CHAUDES: NE PAS TOUCHER, AFIN DE REDUIRE LES RISQUES DE BRULURES LE COURANT DE RETOUR INJECTE PAR LE CONVERTISSEUR EN CAS DE DEFAILLANCE DANS LE MODULE PV EST TOUJOURS NUL.

