



122111021618

IQ7A-72-2-US
880-00687 12

122111021618



be kind to everyone

PV Positive PV Negative/Neutral
For terminal block location, see page 3 of instructions



PV Positive

PV Negative/Neutral

For terminal

struction manual





ve

terminal torque le

PV Negati









struction m
PV Ne
e/Neutral







WARNING: PHOTOVOLTAIC
POWER SOURCE
SOLADECK



WARNING: PHOTOVOLTAGE
POWER SOURCE
SOLADeck





**WARNING: PHOTOVOLTAIC
POWER SOURCE**

ph-lab.com

02-114





REC Alpha Black Series

REC365AA Black

Serial Number: FBB-4008394327

Phone: +65 6495 9228

www.recgroup.com

Power Output (Pmax)	365 W
Watt Class Sorting	0/+5 W
Power Production Tolerance	+/- 3 %
Rated Voltage (Vmpp)	37.1 V
Rated Current (Impp)	9.85 A
Open Circuit Voltage (Voc) (+/- 3%)	44.0 V
Short Circuit Current (Isc) (+/- 3%)	10.52 A
Maximum System Voltage (Vsys)	1000 V
Maximum Series Fuse (DC) (UL)	25 A
Maximum Series Fuse (DC) (IEC)	25 A
Design Load	+4666 / -2666 Pa*
Maximum Test Load	+7000 / -4000 Pa*

(Values at STC: 1000 W/m² AM 1.5, cell temp 25°C)

See installation manual for *) mechanical installation requirements and +) installation requirements to achieve a specified system fire class

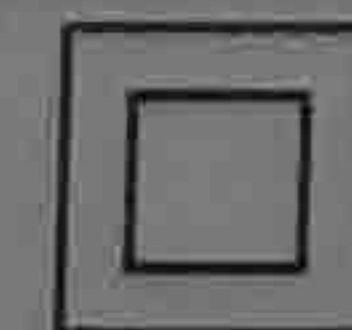


Intertek
5017774

- Conforms to UL Std. 61730-1/-2
- Certified to CSA Std. C22.2#61730-1/-2
- UL Fire Rating Type 2⁺



- IEC 61215
- IEC 61730



Application Class: Safety Class II

Manufactured: 07.04.2021

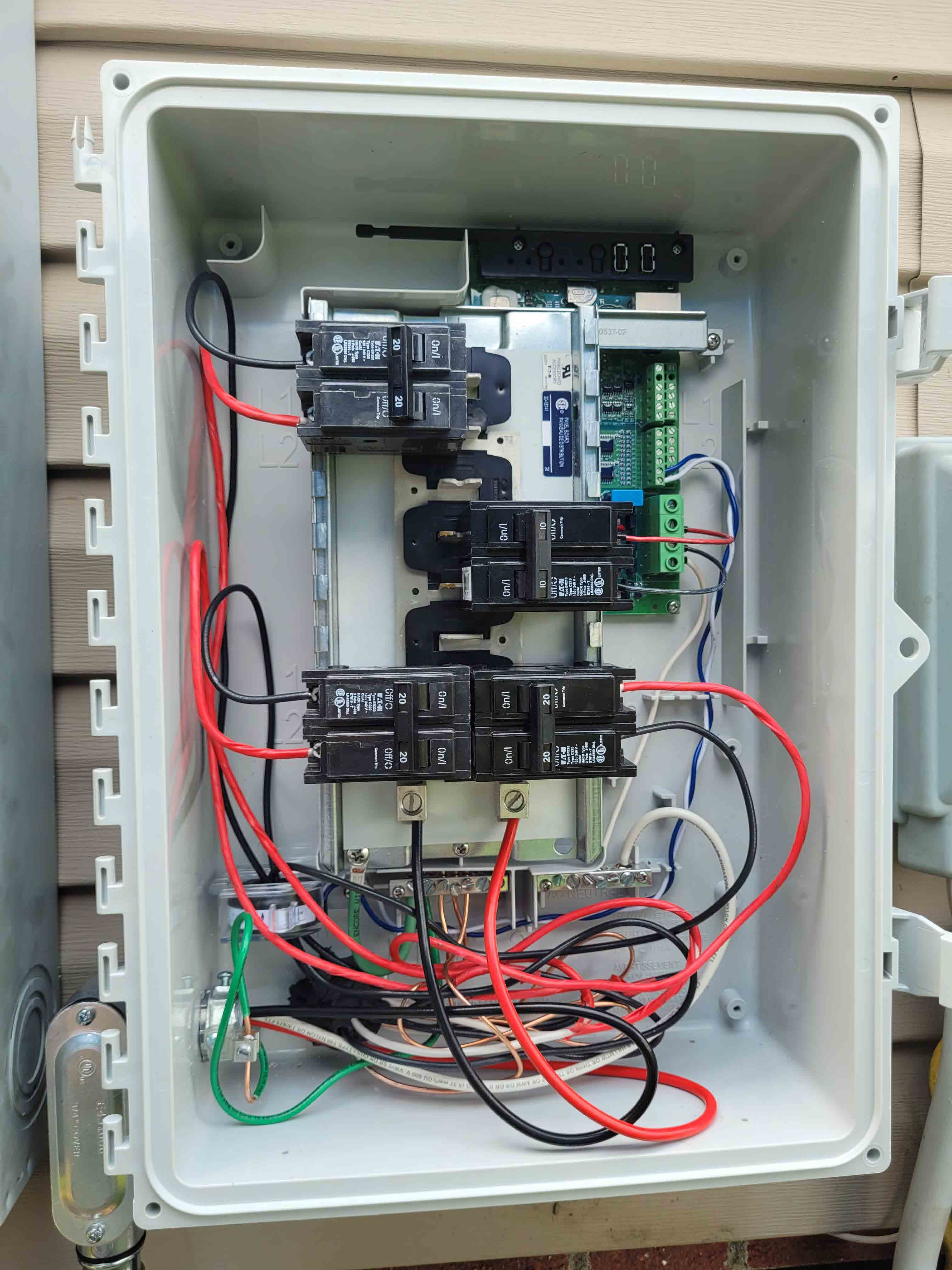
Warning electrical hazard. This module produces electricity when exposed to light. Follow all applicable electricity safety precautions. Only qualified personnel should install or perform maintenance work on the module. Be aware of dangerous high DC voltage when connecting or disconnecting modules. Do not damage or scratch the rear surface of the module. Do not handle or install modules when they are wet. Refer to installation and operation manuals before installing, servicing or operating this unit.

Avertissement: Risque de choc électrique. Ce module solaire produit de l'électricité lorsqu'il est exposé à la lumière. Respecter toutes les précautions de sécurité applicables. L'installation, la mise en service, l'entretien et la réparation du module, doivent être réalisés que par du personnel qualifié. Attention aux éléments sous haute-tension CC pendant la connexion ou déconnexion des modules. Eviter d'endommager la surface arrière du module avec des objets pointus. Ne pas manipuler ni installer les modules s'ils sont humides. Référez vous au manuel d'installation avant l'installation, l'entretien ou l'opération de cet unité.

For field connections, use min. 4 mm² (12 AWG) UL PV wires insulated for a min. of 90°C

CAUTION: DO NOT DISCONNECT UNDER LOAD
ATTENTION: NE PAS DECONNECTER SOUS TENSION
 Made in Singapore by REC SOLAR PTE. LTD.
 20 TUAS SOUTH AVENUE 14, SINGAPORE 637312, SINGAPORE









WARNING: LIVE
POWER

WARNING:
LIVE POWER

CPA 1
2mm



WARNING: P
POWER

WARNING: P
POWER







CLASS 1 FLEXIBLE AIR DUCT

R-6.0

H. Har

NASHUA 557 LISTED FOR CLASS 1 DU

NASHUA 557 LISTED FOR CLASS 1 DU

NASHUA 557 LISTED FOR CLASS 1 DU

NASHUA 557 LISTED FOR CLASS 1 DU

NASHUA 557 LISTED FOR CLASS 1 DU



WARNING
HIGH
VOLTAGE
SOURCE

Network
Cable
Patch Panel
Label





WARNING: 120VOLTAGE SOURCE

NO. 2
SOUTH OCEAN
SOUTH BEACH
MIAMI BEACH
FLORIDA 33139

ECCOTEMP
THE FUTURE OF WATER HEATING

79.00