

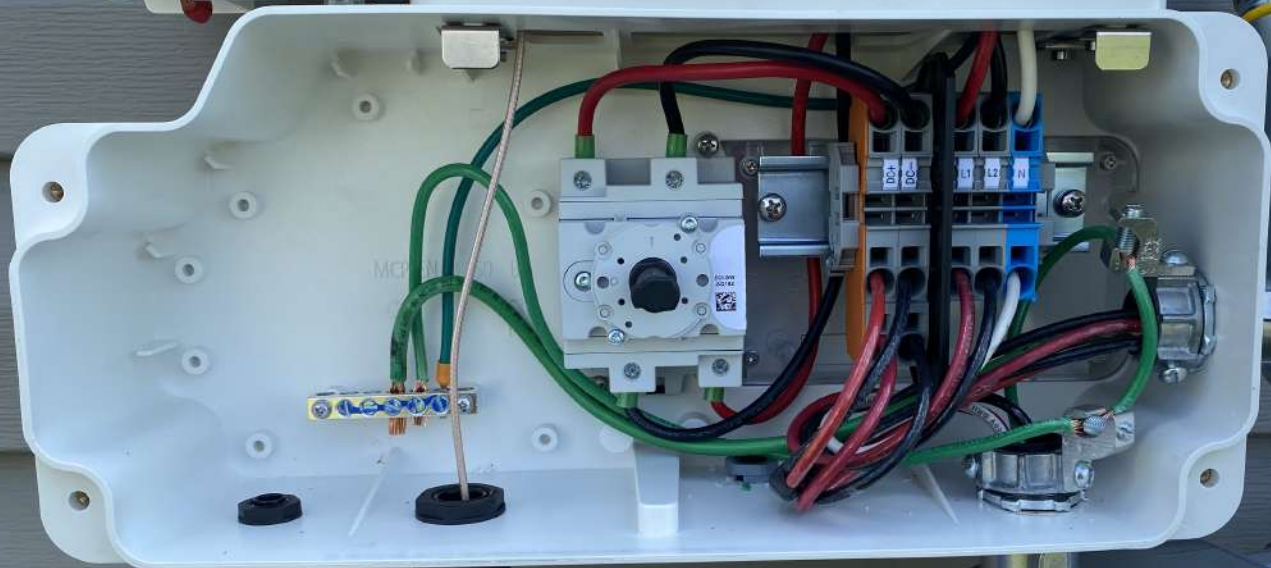






solar edge

HD wave



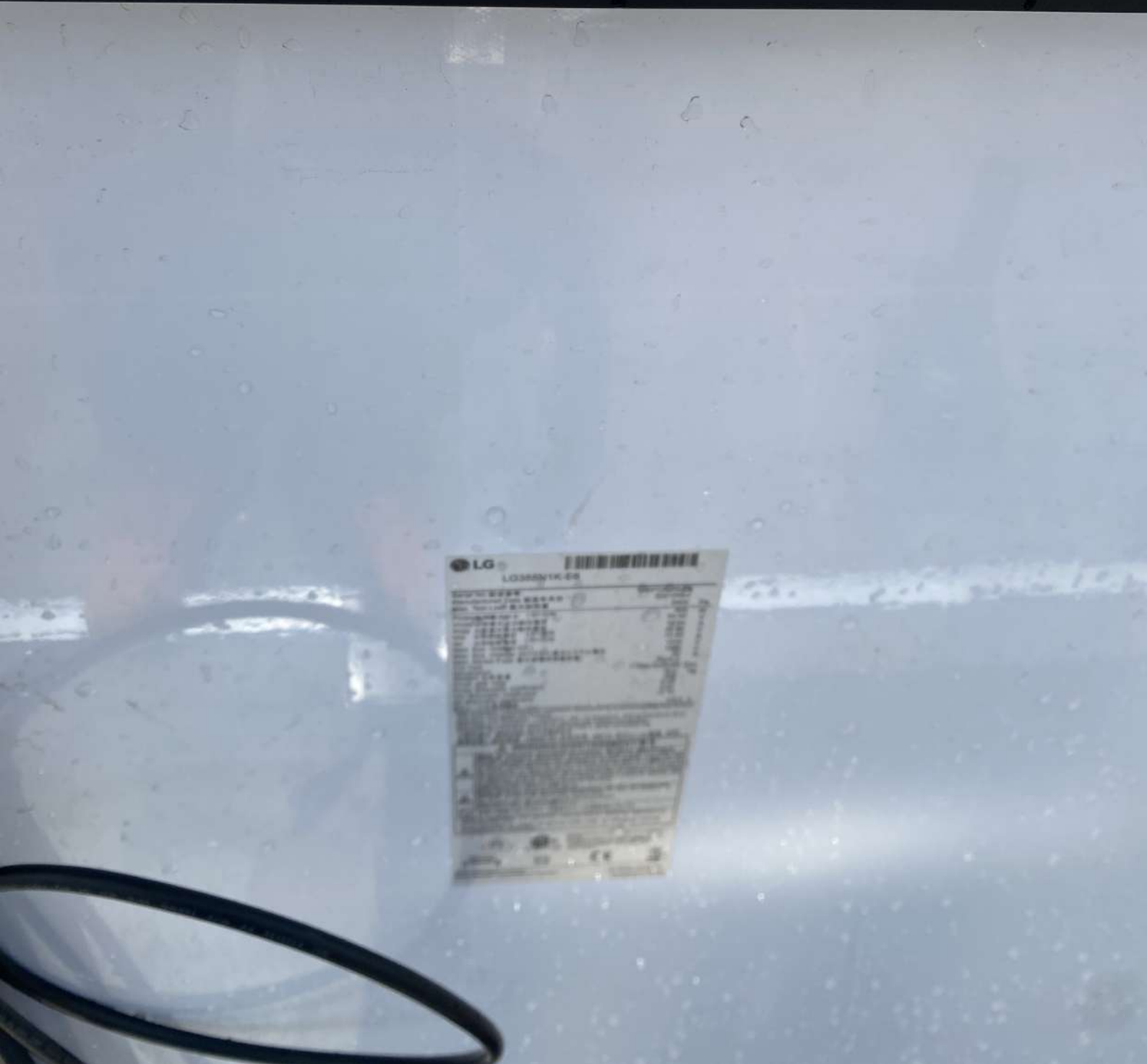




Everest Solar Systems, LLC  
RailConn CR 44-X Struct Set, M11  
DCD Protection Rating 30 AMP  
Conforms to ANSI/UL 2703

05/21/21

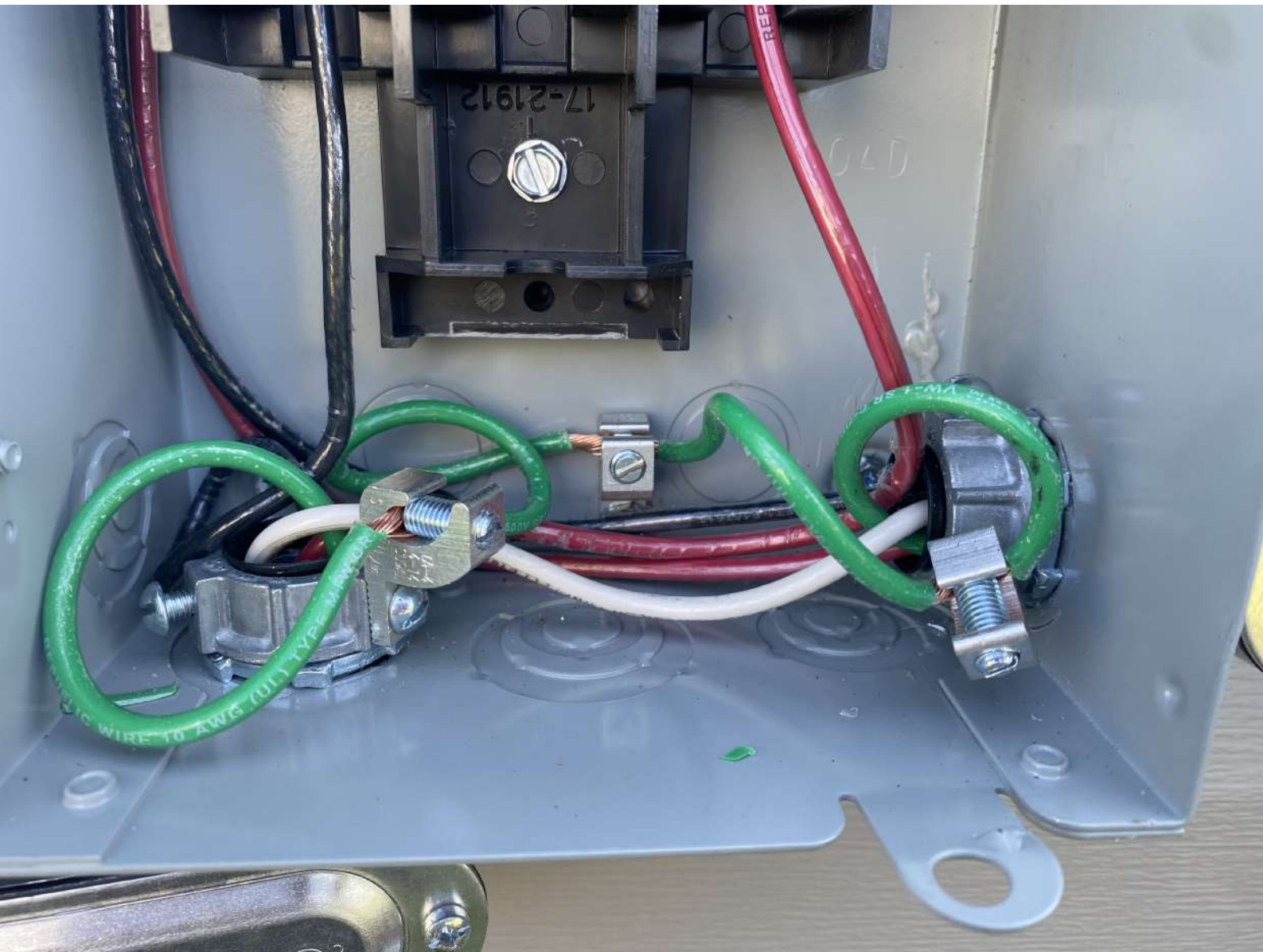




LG  
LG35N1K-ES

Model Name	LG35N1K-ES
Model No.	LG35N1K-ES
Product Name	35" LED TV
Product Type	LED TV
Product Code	LG35N1K-ES
Product Description	35" LED TV
Product Features	LED TV
Product Specifications	LED TV
Product Dimensions	LED TV
Product Weight	LED TV
Product Power	LED TV
Product Safety	LED TV
Product Warranty	LED TV

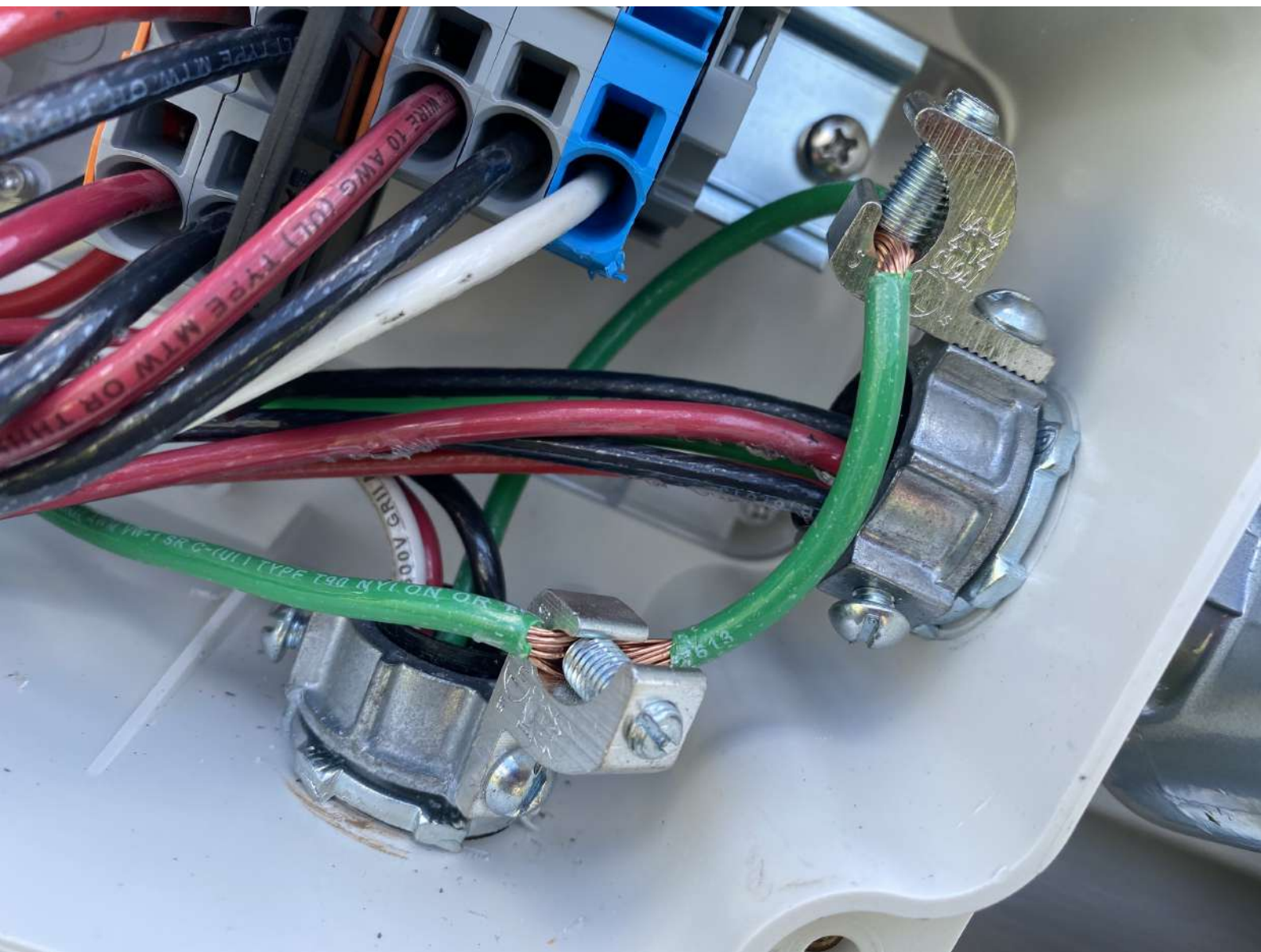




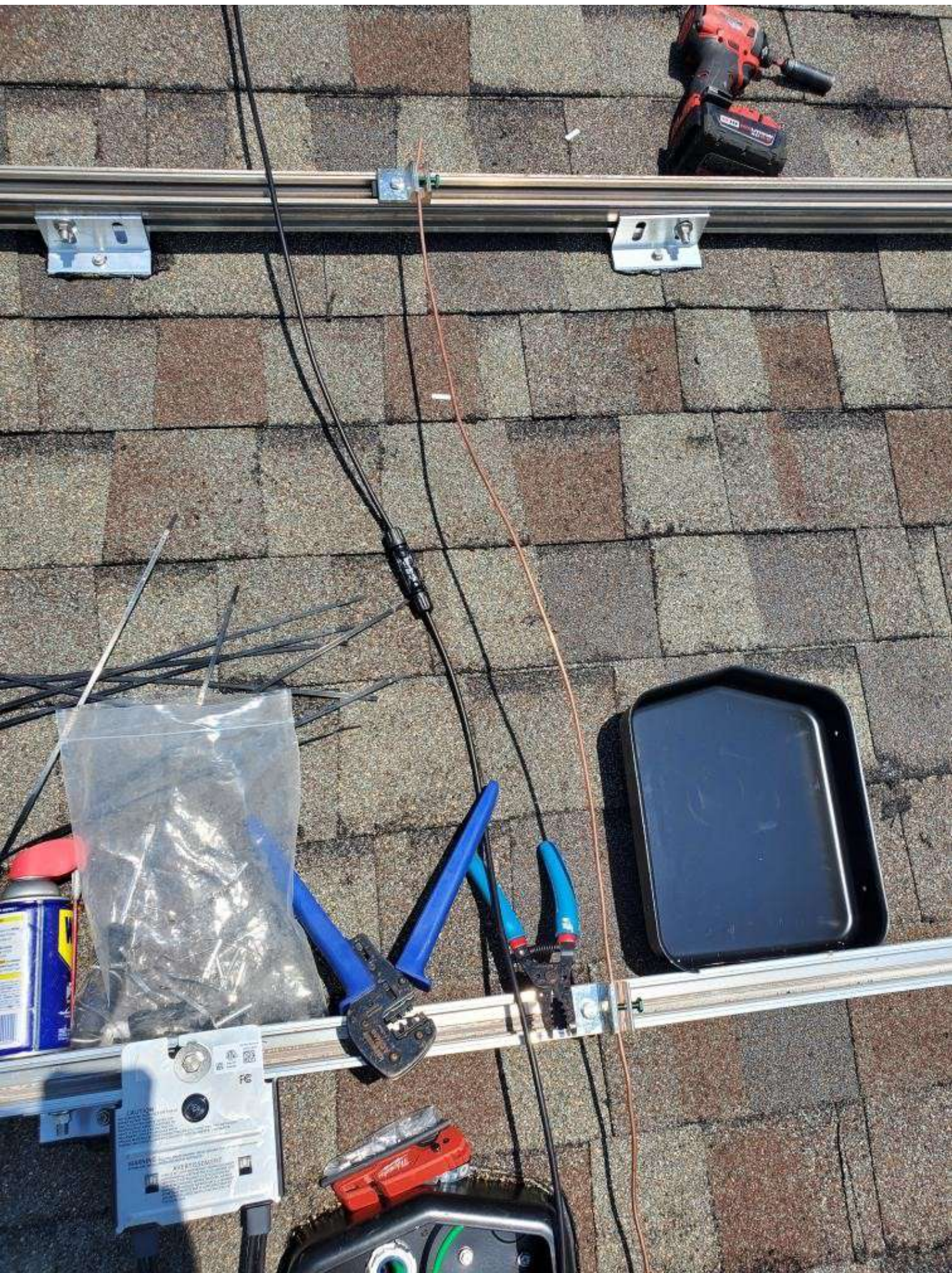




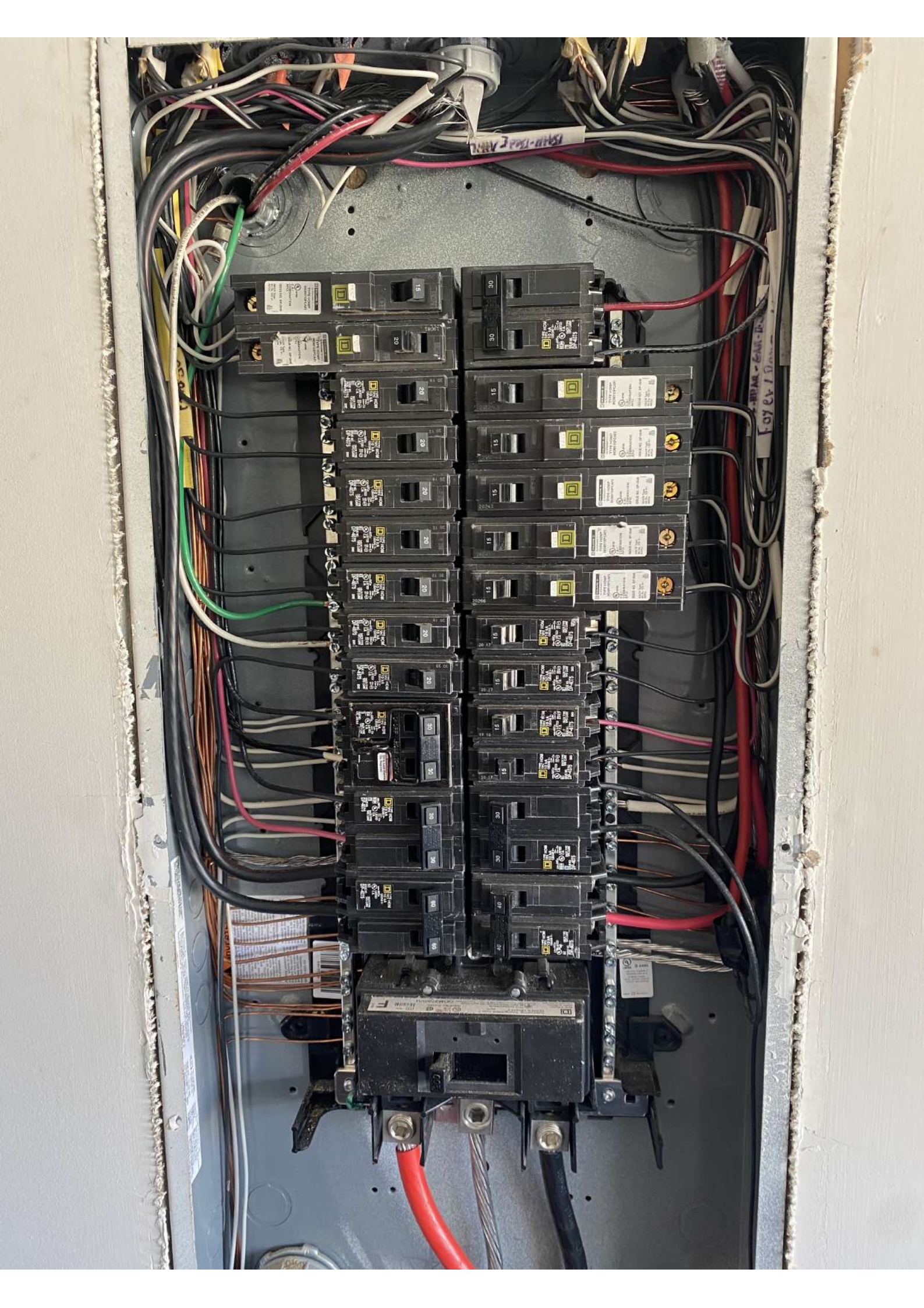








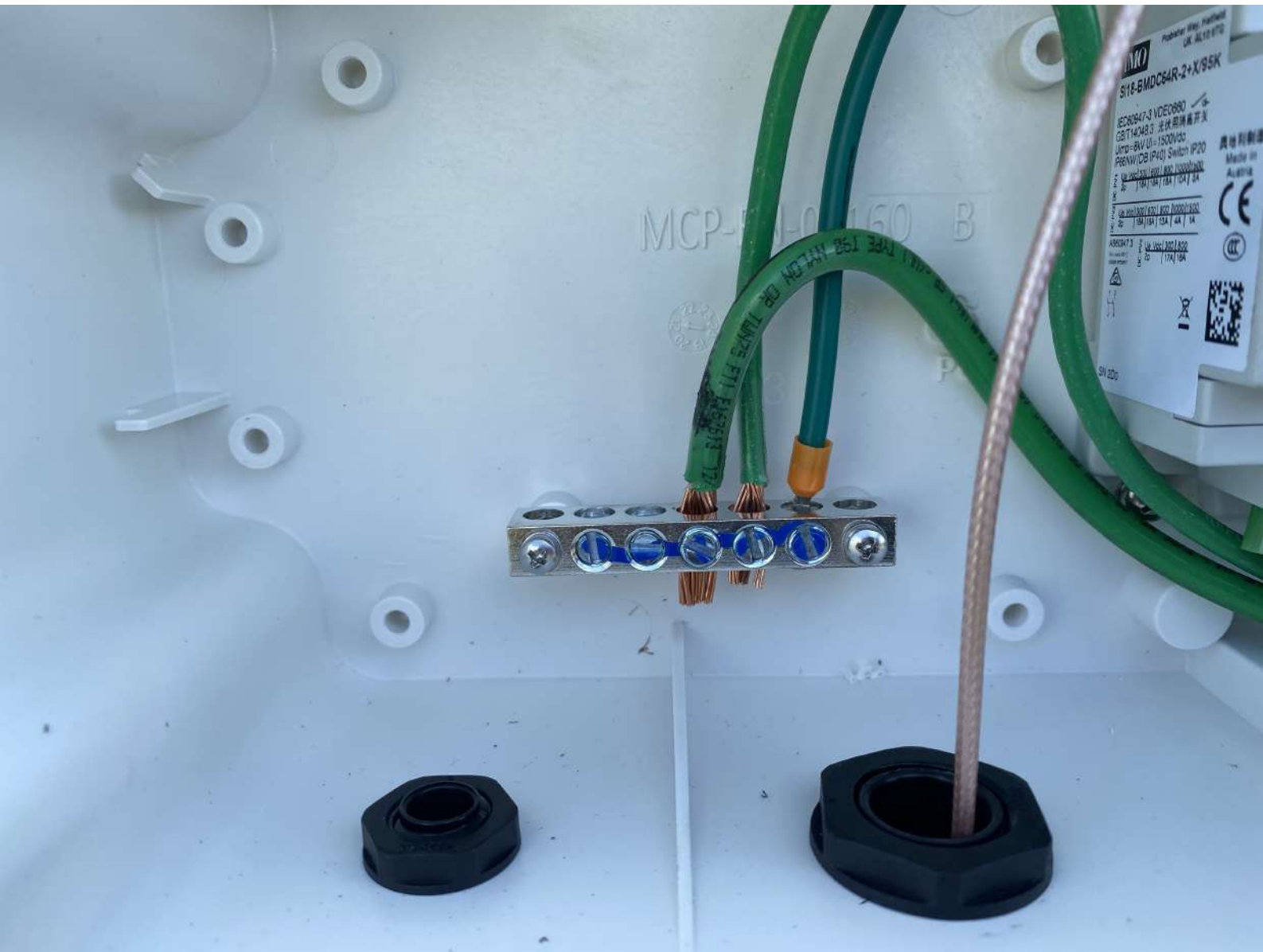












MCP-160 B

**IMO** Probestar Way, Huddersfield  
UK, AL10 1TD  
**S16-BMDC64R-2+X/95K**  
IEC60647-2 VDE0880  
GB/T14048.3 无机械寿命开关  
U<sub>1</sub>U<sub>2</sub>=8V U<sub>1</sub>=1500V<sub>25</sub>  
PRENH/DB (P40) Switch IP20  
10A 10A 10A 10A 10A 10A  
ABB647.3  
10A 10A 10A 10A 10A 10A  
SN 220

奥地利制造  
Made in  
Austria  
CE  
CCC  
QR Code



15A-150V-111111

20 15 20 20 20 20

20 19 20 12 20 19 20 12

TYPE HOM

ON OFF

30 30 15 15 15

TYPE HOM

10 KA 120/240 V-

UL LISTED C.B. HACR TYPE TPO CARP

DP-4075

TEST

ON OFF

SQUARE D  
By Schneider Electric  
TYPE HOM P  
HOM115PCAFI

UL LISTED  
C.B./COMBINATION  
AFCI

ISSUE NO. DP-3640

HACR Type  
60 Hz, 120 V-  
A/Cu

S1 62









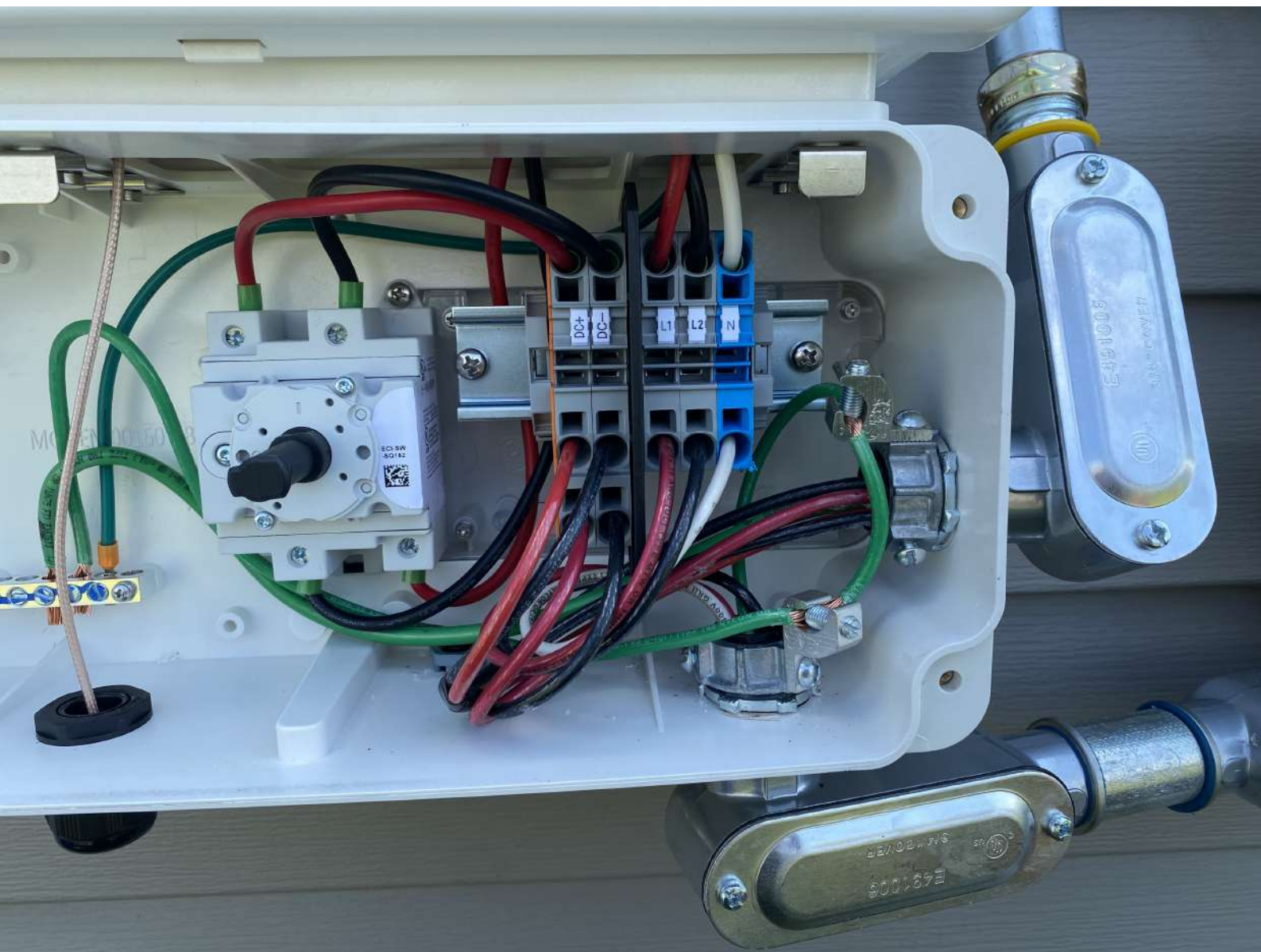
WIRE 10 AWG (III) TYPE MTW OR THHN OR THWN

ISSUE NO. 100  
PART TYPE  
REV. 100-1  
100

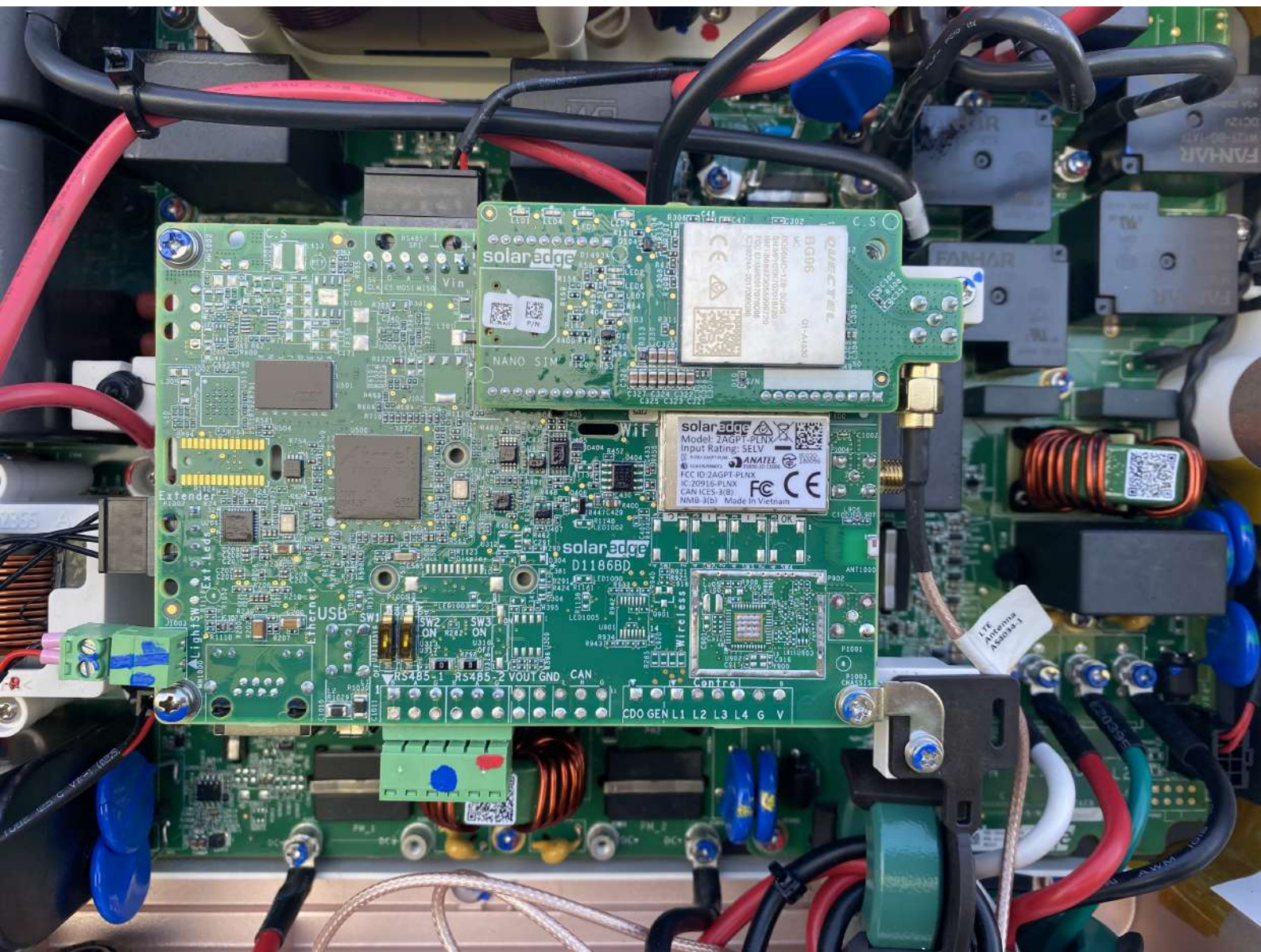




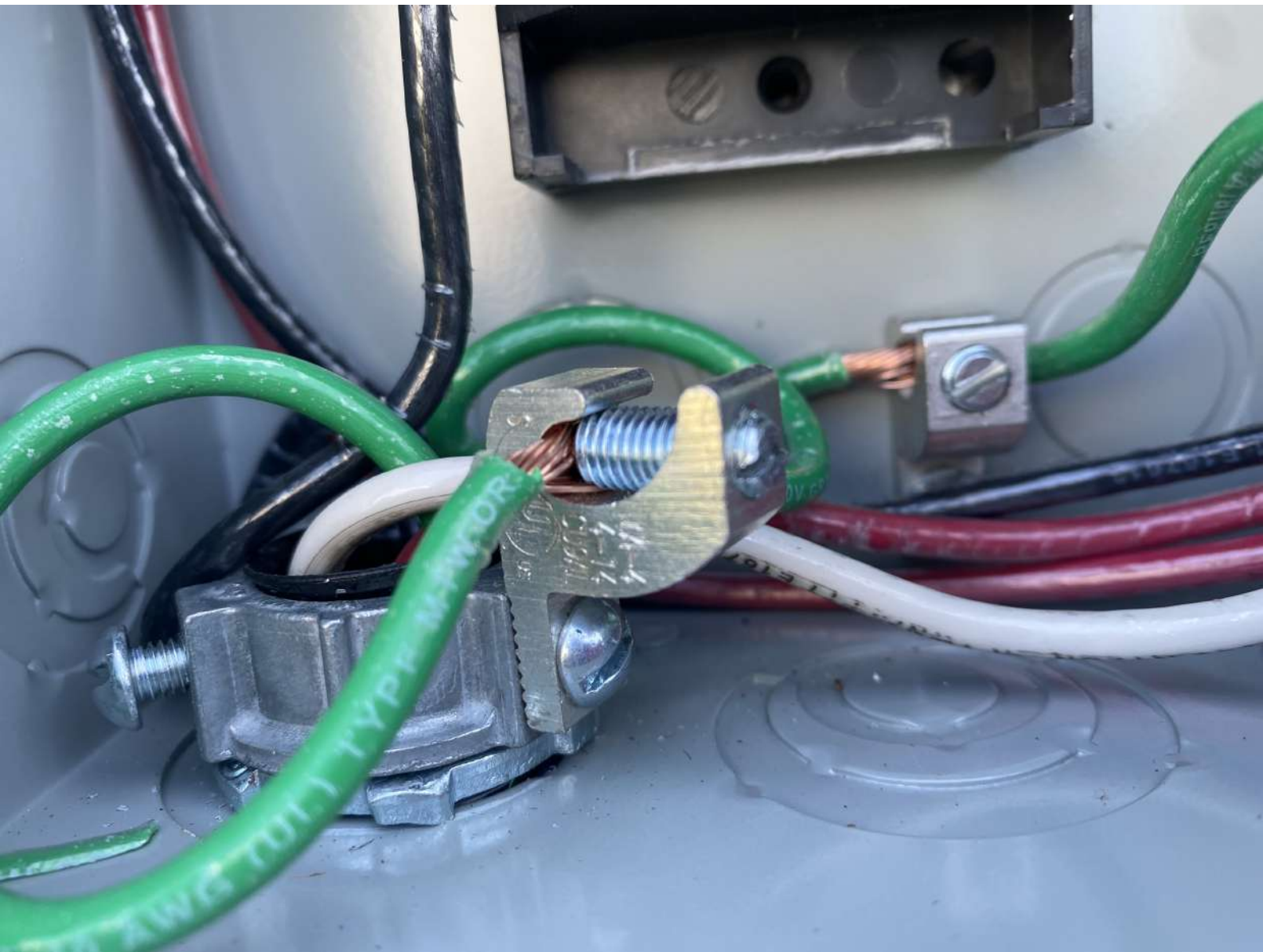




















LG355N1K-E6

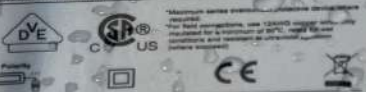
Serial No. 製造番号	104V1UQ2QJ06
Manufactured Date 製造年月日	20210424
Max. Test Load 最大耐荷重	5400 Pa
Pmax 公称最大出力 (-0/+3)%	355 W
Vmpp 公称最大出力動作電圧	34.00 V
Imp 公称最大出力動作電流	10.44 A
Voc 公称開放電圧 (-5/+5)%	40.80 V
Isc 公称短絡電流 (-5/+5)%	10.93 A
Max. Sys. Voltage (UL)	1000 V
Max. Sys. Voltage (IEC/CSA) 最大システム電圧	1000 V
Max. Series Fuse 最大過電流保護定格	20 A
Fire Type	Type 2
Dimension	1768x1042x40 mm
Weight 公称質量	18.5 kg
Pmax (Bif. 100)	358
Pmax Bifaciality coefficient	0.09
Voc Bifaciality coefficient	0.91
Isc Bifaciality coefficient	0.10
モジュールの適用等級	クラス A

\*See installation instructions for Installation Requirements to Achieve a Specified System Fire Class Rating with this Product.  
 \*Standard Test Condition : 1,000W/m<sup>2</sup>, AM 1.5 Spectrum, Cell temperature 25°C  
 \*See module installation manual for appropriate mating connectors  
 \*Tested to IEC 61215-2: 2016 and IEC 61730-1: 2016, UL/CSA 61730  
 上記の値は、基準状態における値を示す  
 基準状態：放射照度 1,000W/m<sup>2</sup>、分光分布 AM1.5、モジュール温度 25°C

**WARNING/AVERTISSEMENT/警告**

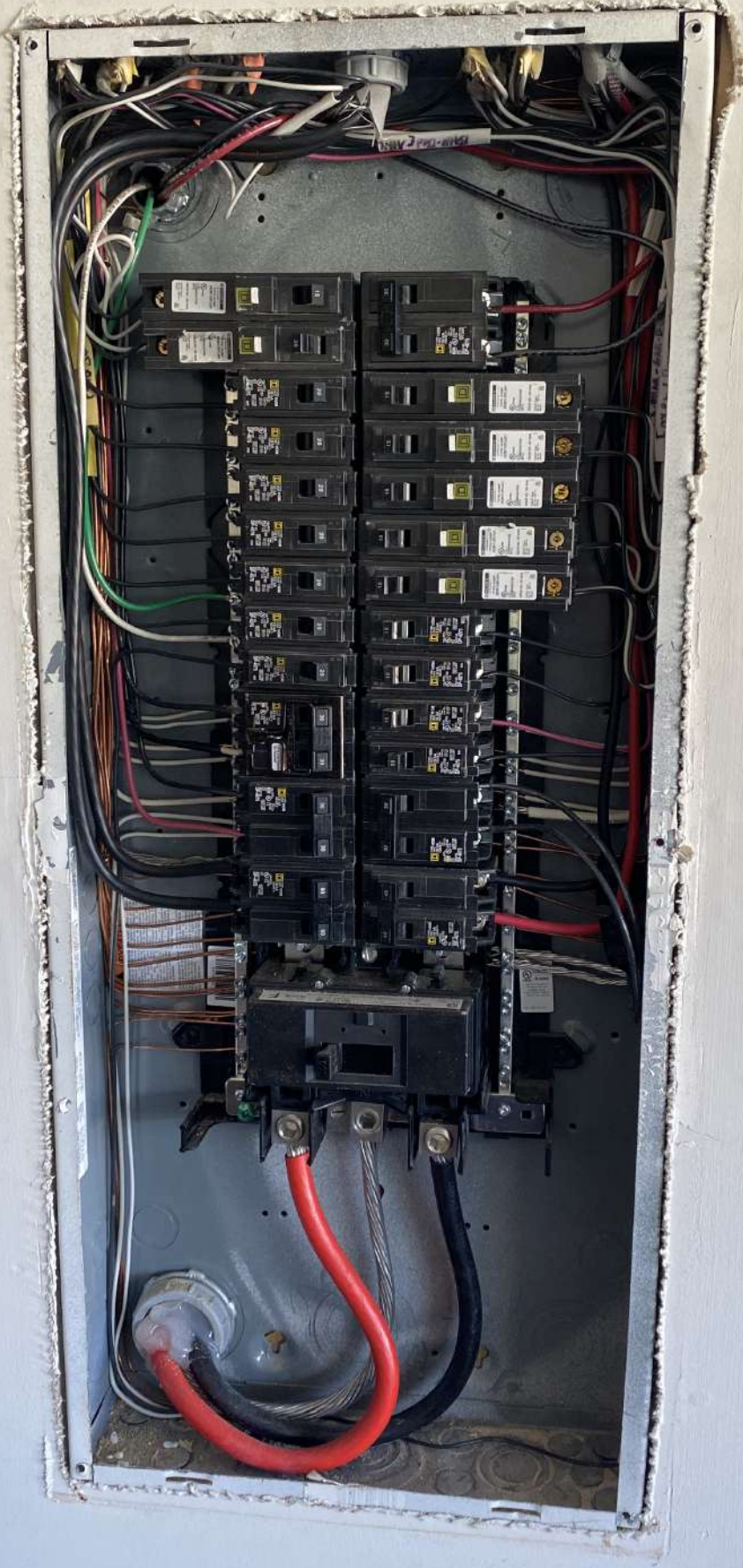
- Risk of electric shock/Précaution de choc électrique**  
 DO NOT connect or disconnect plug contacts while a system is under load current. DO NOT approach the damaged or broken module, unless you are an expert. Otherwise, it may result in a hazardous situation or a serious injury.  
 Ne connectez ou déconnectez pas le connecteur pendant qu'un système est sous la charge électrique. Ne approchez pas un module endommagé ou défectueux, si vous n'êtes pas un expert. Sinon, il peut en résulter une situation hasardeuse ou une blessure sérieuse.  
 感電の恐れがあり、電子ボックスを触らないこと。
- Risk of fires and burns/Précaution de feu et incendie**  
 DO NOT contact with electrically active parts.  
 Ne touchez pas des parts actives électriquement.  
 感電や燃焼の恐れがあり、太陽電池モジュールの裏面を触らないこと。

Refer to installation and operation manual before installing, operation or servicing this unit.  
 Avant d'installer ou mettre en service cette unité, se référer au manuel d'installation et d'opération.



Solar Cell: Made in Korea  
 Solar Module: Assembled in Vietnam  
 LG Electronics Inc.  
 Designed in Korea



















⚠ WARNING DUAL POWER SOURCE  
SECOND SOURCE IS PHOTOVOLTAIC SYSTEM

**CAUTION: SOLAR ELECTRIC  
SYSTEM CONNECTED**

**ENERGY EFFICIENCY CERTIFICATE**  
10/12/12

Field Number: 10171  
Signature: [Signature]

Property Address: [Address]

City: [City] State: [State] ZIP: [ZIP]

Equipment	Model	Year	Efficiency
Water Heater			
Boiler			
Central Air Conditioning			
Refrigerator			
Dishwasher			
Stove			
Washing Machine			
Dryer			
Lighting			
Other			

Comments: [Comments]

Inspector: [Inspector Name]  
Date: [Date]



**WARNING: PHOTOVOLTAIC  
POWER SOURCE**

SM



WARNING DUAL POWER SOURCE  
SECOND SOURCE IS PHOTOVOLTAIC SYSTEM

CAUTION: SOLAR ELECTRIC  
SYSTEM CONNECTED

**Solar**

Master Breaker  
Circuit Breaker  
Smokes

Relocate!

Water Leak	Water Leak
Bedroom	Bedroom
Living Room	Living Room
Kitchen	Kitchen
Hallway	Hallway
Garage	Garage
Basement	Basement
Attic	Attic
Front Porch	Front Porch
Back Porch	Back Porch
Pool	Pool
Driveway	Driveway
Garage Door	Garage Door
Water Heater	Water Heater
W.P.	W.P.
Dishwasher	Dishwasher
AC	AC
AC	AC
Range	Range
Range	Range

WARNING ADVERTENCIA AVERTISSEMENT

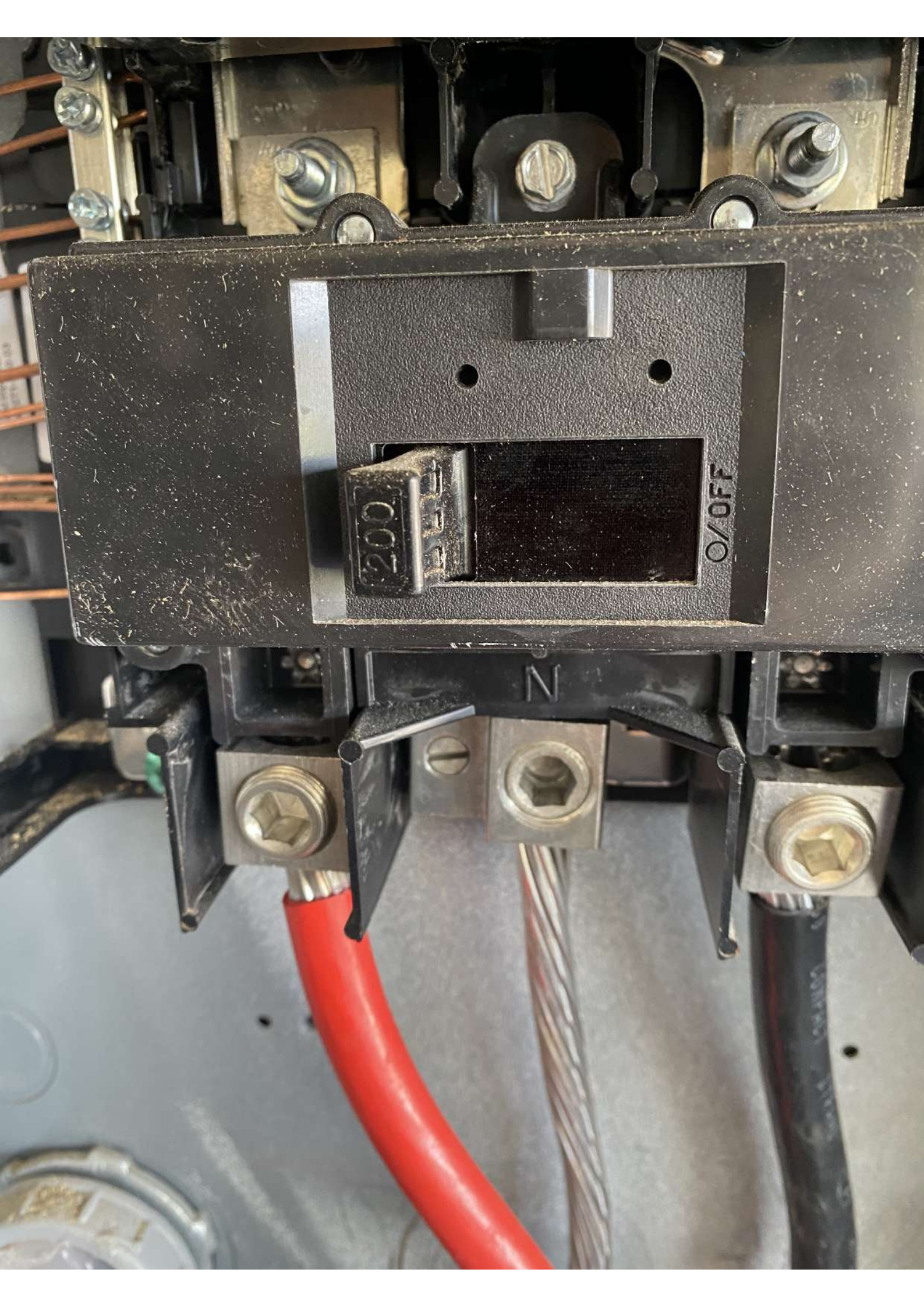
⚡ DANGER

⚡ PELIGRO

DANGER

Solar!







**⚠ WARNING ADVERTENCIA AVERTISSE**

This equipment is designed and tested by Square D to performance levels which exceed Underwriters Laboratories Standards. Use of Other than Square D Circuit Breakers May Adversely Affect User Safety and Impair Reliability. Square D disclaims all liability for damage, injury or non-performance caused by the use or failure of non-Square D circuit breakers.

Este equipo ha sido diseñado y probado por Square D y supera las normas de nivel de rendimiento establecidas por Underwriters Laboratories (UL). El uso de interruptores automáticos que no sean de Square D puede afectar negativamente la seguridad del usuario y deteriorar la confiabilidad del equipo. Square D no asume responsabilidad alguna por daños, lesiones o funcionamiento inadecuado del equipo causado por el uso o desperfectos de interruptores automáticos que no sean de Square D.

Cet appareil est conçu et vérifié par niveaux de rendement supérieurs aux Underwriters Laboratories (UL) et du canadienne de normalisation (CSA). disjoncteurs autres que Square D risent de compromettre la sécurité de l'utilisateur et la fiabilité. Square D rejette toute responsabilité en cas de dommage, blessure ou mauvais fonctionnement résultant de l'utilisation ou de la défaillance de disjoncteurs autres que Square D.

**Hot  
Relays!**

Use only Square D HOM Circuit Breakers / Utilisez seulement les interrupteurs automatiques HOM de Square D

Master Bed LTS / Recp Smokes	28	Book Recp	26	Bath 6ft Recp	24	Fridge Recp	22	Kitchen 6ft Recp	20	Micro
------------------------------------	----	-----------	----	------------------	----	----------------	----	------------------------	----	-------

Bed # 2 Hall Bath Attic LTS / Recp	25	Bed # 3 tu laundry LTS / Recp	23	Foyer / Porch Flex Room LTS / Recp	21	Kitchen LTS	19	Garage Bath Porch LTS	
---	----	-------------------------------------	----	--	----	----------------	----	-----------------------------	--

**SOLD**





CAROLINA  
TRASH & SEPTIC  
919-880-1440









WARNING: PHOTOVOLTAGE POWER SOURCE

solar HD

WARNING: PHOTOVOLTAGE POWER SOURCE

E-T-M

WARNING

CAUTION: SOLAR ELECTRIC SYSTEM CONNECTED

Spectrum















Do Not Remove  
2157A190-81



Intertek  
4004590



FC

**CAUTION**

HOT SURFACES- TO REDUCE THE RISK OF BURNS-DO NOT TOUCH.  
RISK OF ELECTRIC SHOCK-WHEN THE PHOTOVOLTAIC ARRAY IS EXPOSED TO LIGHT, IT SUPPLIES A DC VOLTAGE TO EQUIPMENT. COVER PV MODULE WITH OPAQUE MATERIAL BEFORE CONNECTING OR DISCONNECTING THIS OPTIMIZER.  
DURING FAULT,ZERO CURRENT IS SOURCED INTO DC ARRAY BY CONVERTER.

**WARNING** ELECTRIC SHOCK HAZARD. THE DC CONDUCTORS OF THIS PHOTOVOLTAIC SYSTEM ARE UNGROUNDED AND MAY BE ENERGIZED.

**AVERTISSEMENT**

RISQUE DE CHOC ELECTRIQUE: QUAND LE CHAMP PHOTOVOLTAIQUE EST EXPOSE A LA LUMIERE, UNE TENSION CC EST FOURNIE A CET EQUIPEMENT.  
SURFACES CHAUDES: NE PAS TOUCHER, AFIN DE REDUIRE LES RISQUES DE BRULURES LE COURANT DE RETOUR INJECTE PAR LE CONVERTISSEUR EN CAS DE DEFAILLANCE DANS LE MODULE PV EST TOUJOURS NUL.



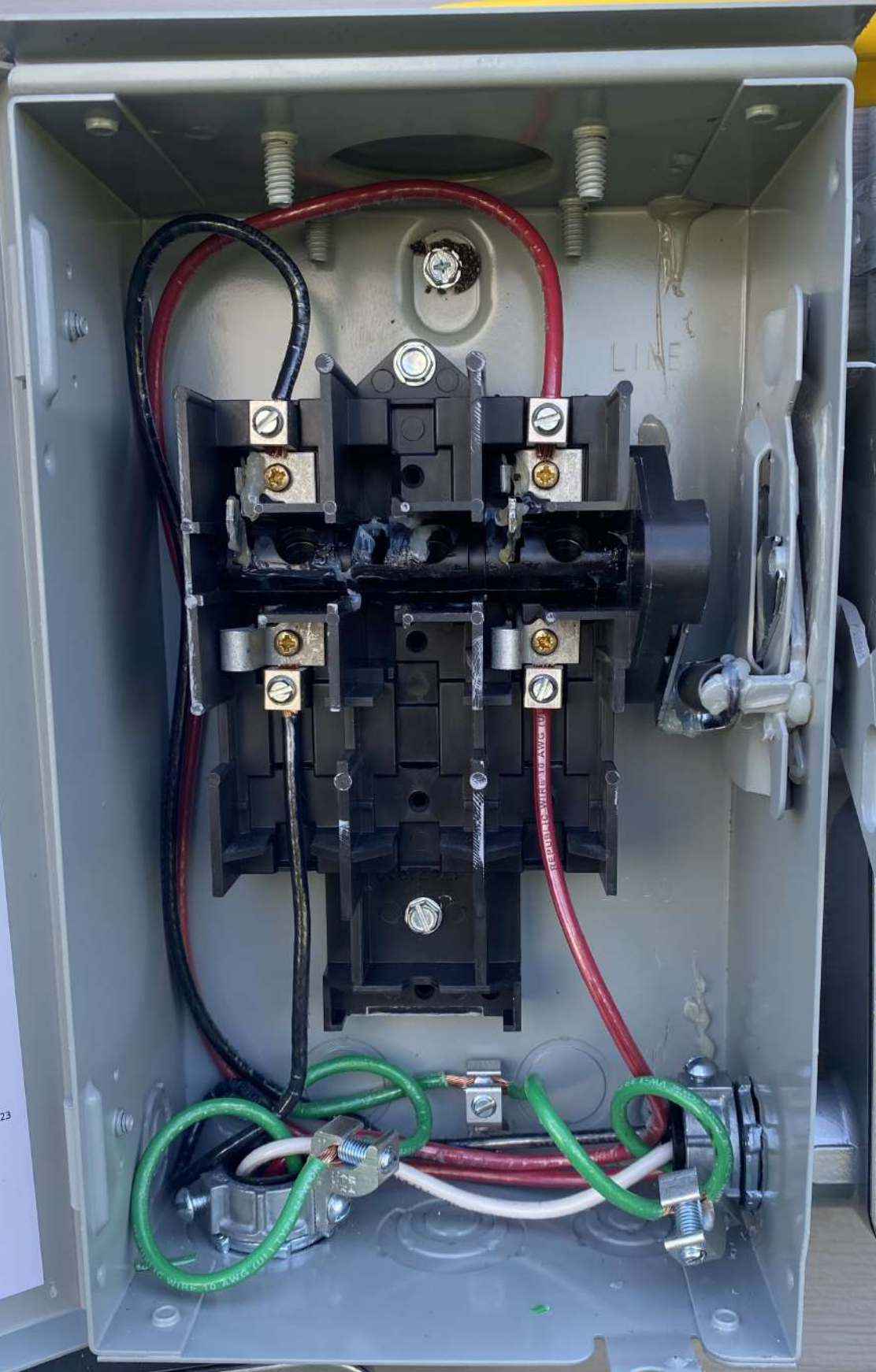


**DANGER**  
RISQUE DE BLESSURES  
Ne pas ouvrir le coffret lorsque le disjoncteur est sous tension.  
Après la réparation, remettre sous tension.

UL LISTED  
ENCLOSED SWITCH  
INTERRUPTEUR EN GABINETE  
INTERRUPTEUR SOUS COFFRET  
ISSUE NO. AL-72  
NOM-367-ANCC

Se recomienda cuando se instala el kit que se instale un fusible de 3 hilos con neutro sólido, capaz de entregar no más de 100 000 amperios, cuando sea protegido por un dispositivo de protección por corriente residual no más de 10 000 A RCM, cuando sea protegido por cualquier dispositivo de protección por corriente residual clasificado a 30 A máximo, a una temperatura ambiente máxima de 75°C.  
Sección transversal del conductor mm<sup>2</sup>/  
del conductor  
CU  
Comme équipement de service lorsque le kit est utilisé, les puissances maximales applicables: 120/240 V - 3 fils  
0,000 ampères efficaces symétriques lorsque protégé par des fusibles de 100 000 ampères maximum. Convient pour un dispositif de protection par courant résiduel maximum. 240 V - 10 000 ampères efficaces symétriques maximum. Convient pour tout autre dispositif de protection contre le courant résiduel maximum. 75°C.  
Section des conducteurs / #14 - #6 AWG / 35 Lb. - Pa.  
AL - CU

PUB53723



E491006  
3/4" COVER

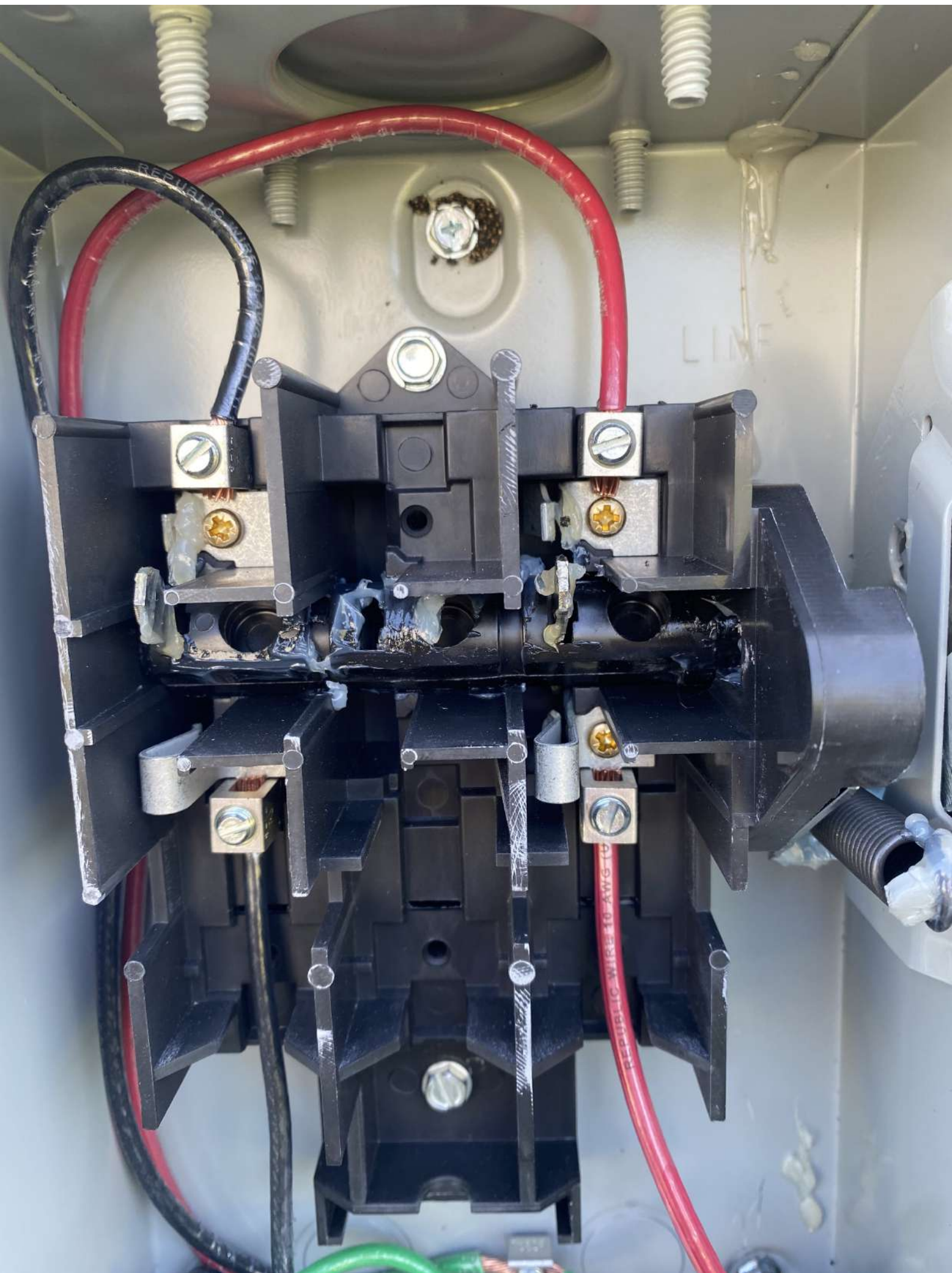
E491006  
3/4" COVER  
UL LISTED



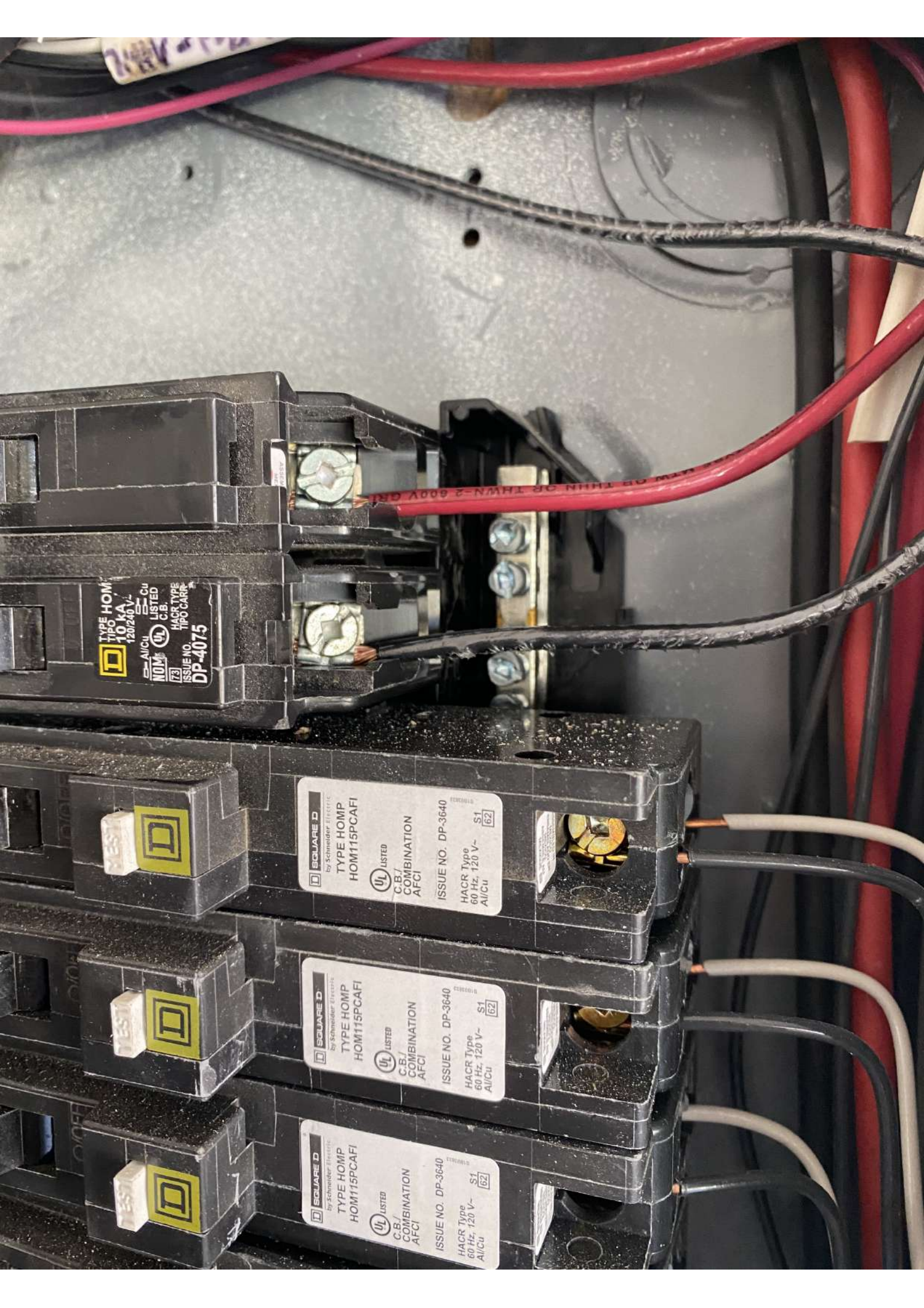


WARNING: PHOTOVOLTAIC  
POWER SOURCE









TYPE HOM  
10 KA  
120/240 V-  
Copper  
UL LISTED  
C.B.  
HACR TYPE  
TIPO C.A.R.E.  
ISSUE NO. DP-4075

SQUARE D  
by Schneider Electric  
TYPE HOM P  
HOM115PCAFI  
UL LISTED  
C.B./COMBINATION  
AFCI  
ISSUE NO. DP-3640  
HACR Type  
60 Hz, 120 V-  
A/Cu S1 62

SQUARE D  
by Schneider Electric  
TYPE HOM P  
HOM115PCAFI  
UL LISTED  
C.B./COMBINATION  
AFCI  
ISSUE NO. DP-3640  
HACR Type  
60 Hz, 120 V-  
A/Cu S1 62

SQUARE D  
by Schneider Electric  
TYPE HOM P  
HOM115PCAFI  
UL LISTED  
C.B./COMBINATION  
AFCI  
ISSUE NO. DP-3640  
HACR Type  
60 Hz, 120 V-  
A/Cu S1 62



















