



UL
CERTIFIED
E496090

+

840-00385-11
100VDC 20A
+79°C 2053

8329153
100VDC





OFF

△ 65%

81

Calibrating
Heat/Cool disabled



ecobee







































MODEL # 676738415203 AMERICAN MADE & AMERICAN OWNED

CONDUCTO ELECTRICO RIGIDO DEL PVC

3/4" (1.915) x 1/2" (1.270)





BLUE RAVEN
SAFETY

Job Hazard Analysis

CUSTOMER NAME: Jordan Jones

INSTALLATION DATE: 6-17-21

ADDRESS: 5088 Christian Light Rd, Fagway-Varina NC 27526

HAZARD CATEGORY	POTENTIAL HAZARDS	HAZARD CONTROLS
Ladder Safety	<ul style="list-style-type: none"> • Dependent • Defect/Failure • Electrocuton 	ladder 3ft+ above eave and horns
Fall Protection	<ul style="list-style-type: none"> • Fall from 4' or greater 	proper anchors and harness et ropes
Electrical Safety	<ul style="list-style-type: none"> • Electrocuton • AEC Flash 	wear PPE
Heat & Related Issues	<ul style="list-style-type: none"> • High Heat - 85° to 89° • Extreme Heat - 100° or higher 	Take break when need to and stay hydrated.
Public Protection	<ul style="list-style-type: none"> • Falling object • Slip/Trip/Fall 	Caution tape around site and cones
NEAREST HOSPITAL:	Central Harnett Hospital 215 Brightwater Dr Lillington, NC 27546	
SAFETY CONTACT:	Zak Anderson: 916-792-4253	
Additional Notes		
Falling Objects Falls Slips Trips		
Crew Members		
	Name	Signature
1	Dewin B	
2	Donald	
3	Jonathan	
4		
5		
6		

Eli Williams
Crew Lead (print)

Eli Williams
Crew Lead (signature)



ENPHASE

WARNING
ALL PHASES MUST BE OPENED TO DEENERGIZE THE SYSTEM. TO DEENERGIZE THE SYSTEM, ALL PHASES MUST BE OPENED TO DEENERGIZE THE SYSTEM. TO DEENERGIZE THE SYSTEM, ALL PHASES MUST BE OPENED TO DEENERGIZE THE SYSTEM.

WARNING
DO NOT ATTEMPT TO REPAIR OR MAINTAIN THIS EQUIPMENT WHILE THE SYSTEM IS ENERGIZED. TO DEENERGIZE THE SYSTEM, ALL PHASES MUST BE OPENED TO DEENERGIZE THE SYSTEM. TO DEENERGIZE THE SYSTEM, ALL PHASES MUST BE OPENED TO DEENERGIZE THE SYSTEM.

WARNING
THIS EQUIPMENT IS FOR USE ONLY WITH THE SYSTEM IT IS DESIGNED FOR. DO NOT ATTEMPT TO REPAIR OR MAINTAIN THIS EQUIPMENT WHILE THE SYSTEM IS ENERGIZED. TO DEENERGIZE THE SYSTEM, ALL PHASES MUST BE OPENED TO DEENERGIZE THE SYSTEM. TO DEENERGIZE THE SYSTEM, ALL PHASES MUST BE OPENED TO DEENERGIZE THE SYSTEM.

WARNING
DO NOT ATTEMPT TO REPAIR OR MAINTAIN THIS EQUIPMENT WHILE THE SYSTEM IS ENERGIZED. TO DEENERGIZE THE SYSTEM, ALL PHASES MUST BE OPENED TO DEENERGIZE THE SYSTEM. TO DEENERGIZE THE SYSTEM, ALL PHASES MUST BE OPENED TO DEENERGIZE THE SYSTEM.

WARNING
THIS EQUIPMENT IS FOR USE ONLY WITH THE SYSTEM IT IS DESIGNED FOR. DO NOT ATTEMPT TO REPAIR OR MAINTAIN THIS EQUIPMENT WHILE THE SYSTEM IS ENERGIZED. TO DEENERGIZE THE SYSTEM, ALL PHASES MUST BE OPENED TO DEENERGIZE THE SYSTEM. TO DEENERGIZE THE SYSTEM, ALL PHASES MUST BE OPENED TO DEENERGIZE THE SYSTEM.

RAMP SHUTDOWN
SOLAR PV SYSTEM



⚠ WARNING
ELECTRIC SHOCK HAZARD
TERMINALS ON THE LINE AND
LEADS WIRE MAY BE ENERGIZED
IF THE CIRCUIT IS OPEN

**PHOTOVOLTAIC SYSTEM
⚠ AC DISCONNECT ⚠**
SERIAL NUMBER: 1118118
MANUFACTURED: 11/11/11

⚠ WARNING
DUAL POWER SUPPLY
SOURCE: UTILITY GRID AND
PV SOLAR ELECTRIC SYSTEM

⚠ WARNING
THE PHOTOVOLTAIC SYSTEM MAY BE
ENERGIZED BY THE UTILITY GRID
OR BY THE PV SOLAR ELECTRIC SYSTEM
IF THE CIRCUIT IS OPEN

**SOLAR PV SYSTEM
EQUIPPED WITH
RAPID SHUTDOWN**



TURN OFF BREAKERS LOCATED IN
THE MAIN ELECTRICAL PANEL
BEFORE WORKING ON THE PV SYSTEM
IF YOU ARE NOT A LICENSED
ELECTRICIAN

WARNING
ELECTRIC SHOCK HAZARD
TERMINALS ON THE LINE AND
LOAD SIDES MAY BE ENERGIZED
IN THE OPEN POSITION

**RAPID SHUTDOWN
SOLAR PV SYSTEM**

4. COMPLETE POLAROID
POLAROID SAFETY LABELS MUST BE APPLIED TO ALL PV SYSTEMS.
POLAROID SAFETY LABELS MUST BE APPLIED TO ALL PV SYSTEMS.
POLAROID SAFETY LABELS MUST BE APPLIED TO ALL PV SYSTEMS.

**PHOTOVOLTATIC SYSTEM
AC DISCONNECT**
RATED AC OUTPUT CURRENT: 20 A
NOMINAL OPERATING AC VOLTAGE: 240 V

WARNING
RISK OF FIRE, ELECTRIC SHOCK,
OR OTHER HAZARDOUS SITUATION
IF NOT CORRECTLY INSTALLED

 ENPHASE.

⚠ WARNING

ELECTRIC SHOCK HAZARD

TERMINALS ON THE LINE AND
LOAD WIRING MAY BE ENERGIZED
IN THE OPEN POSITION

PHOTOVOLTAIC SYSTEM

⚠ AC DISCONNECT ⚠

RATED AC OUTPUT CURRENT 30 A
NOMINAL OUTPUT AC VOLTAGE 240 V

⚠ WARNING

THIS EQUIPMENT HAS INTERNAL
SOURCES, TOTAL ENERGY OF ALL
OVERCURRENT DEVICES INCLUDING
THIS EQUIPMENT OVERSHEETS
DEVICE SHALL NOT EXCEED
MANUFACTURER'S RATING

⚠ WARNING

THIS EQUIPMENT HAS INTERNAL
SOURCES, TOTAL ENERGY OF ALL
OVERCURRENT DEVICES INCLUDING
THIS EQUIPMENT OVERSHEETS
DEVICE SHALL NOT EXCEED
MANUFACTURER'S RATING

⚠ WARNING

**PHOTOVOLTAIC SYSTEM
COMMON PANEL**

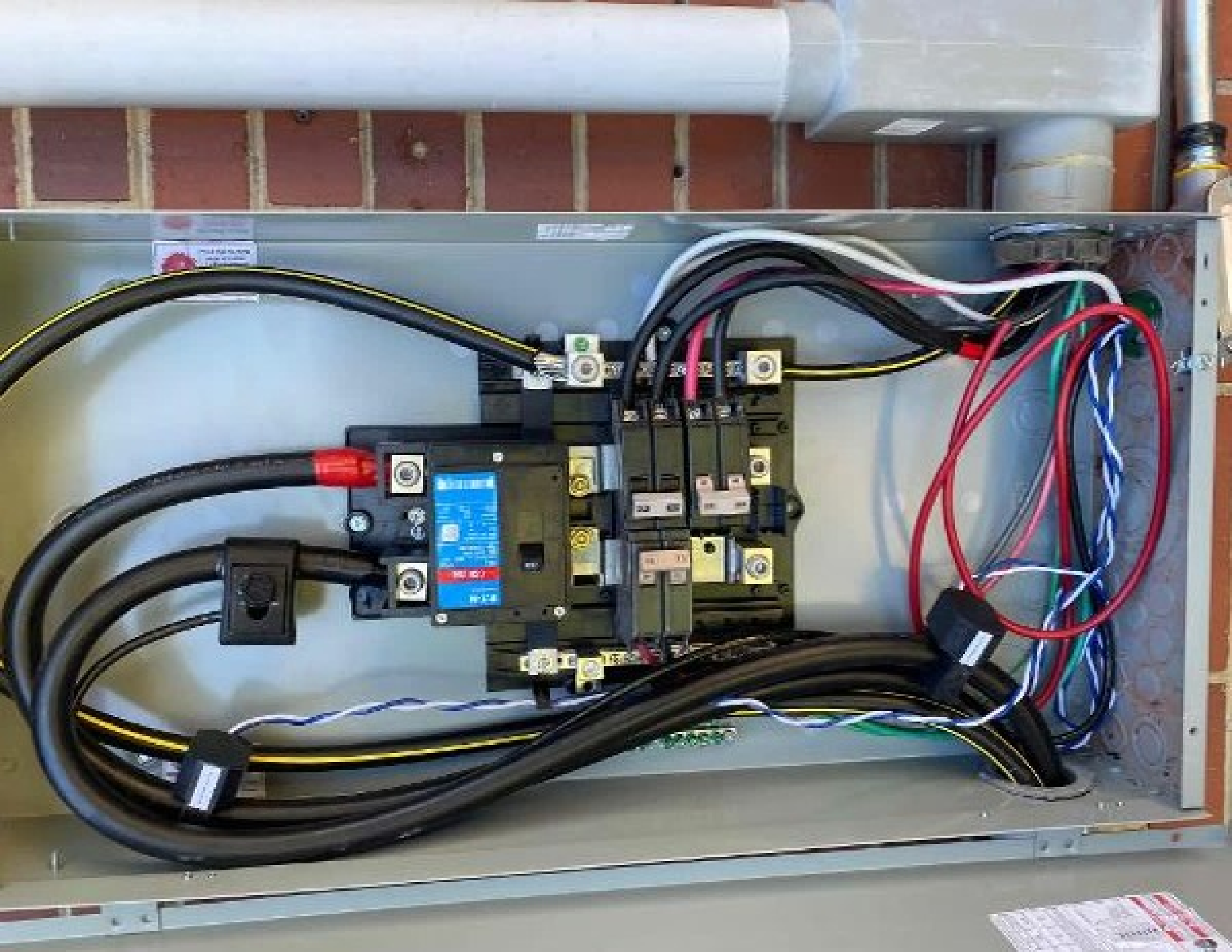
DO NOT ADD LOADS

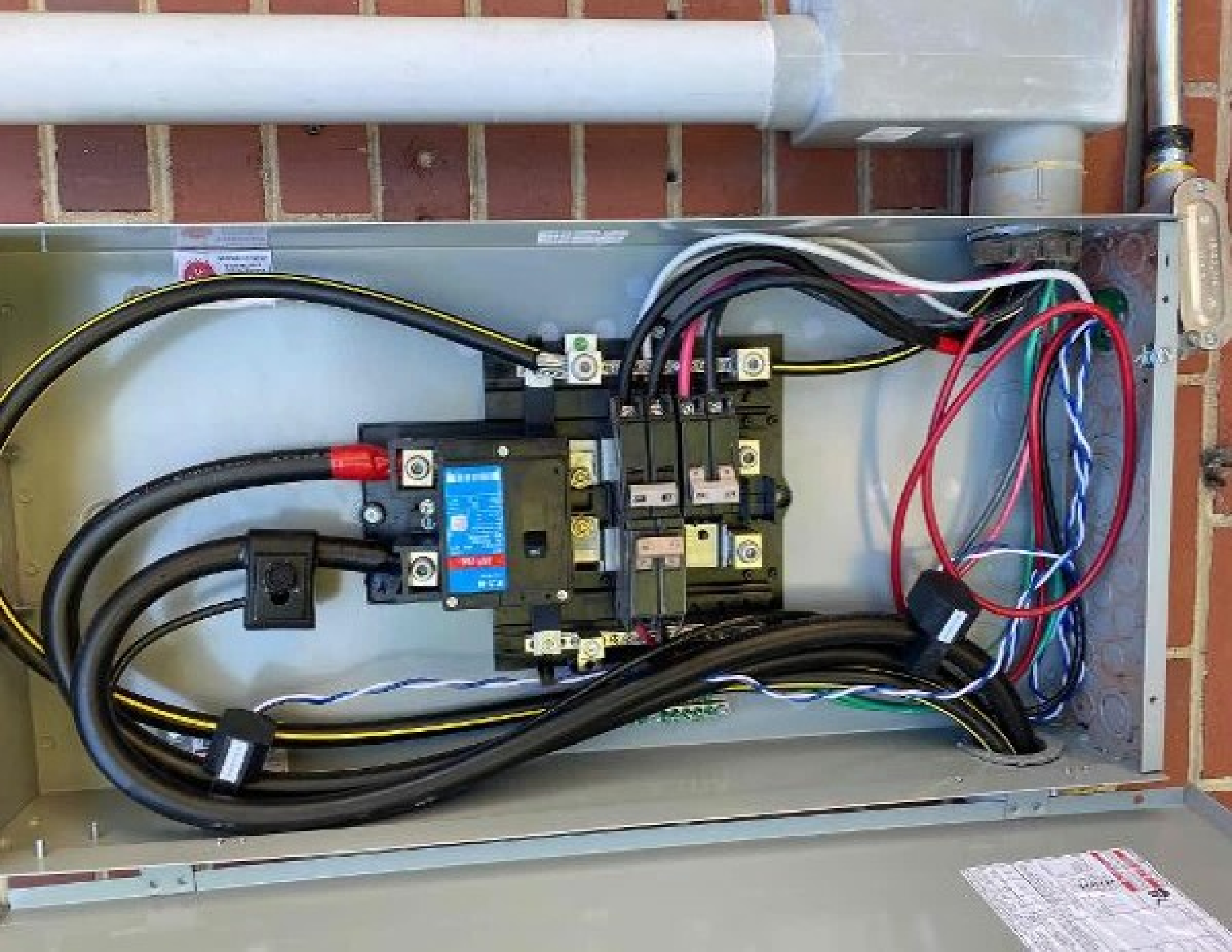








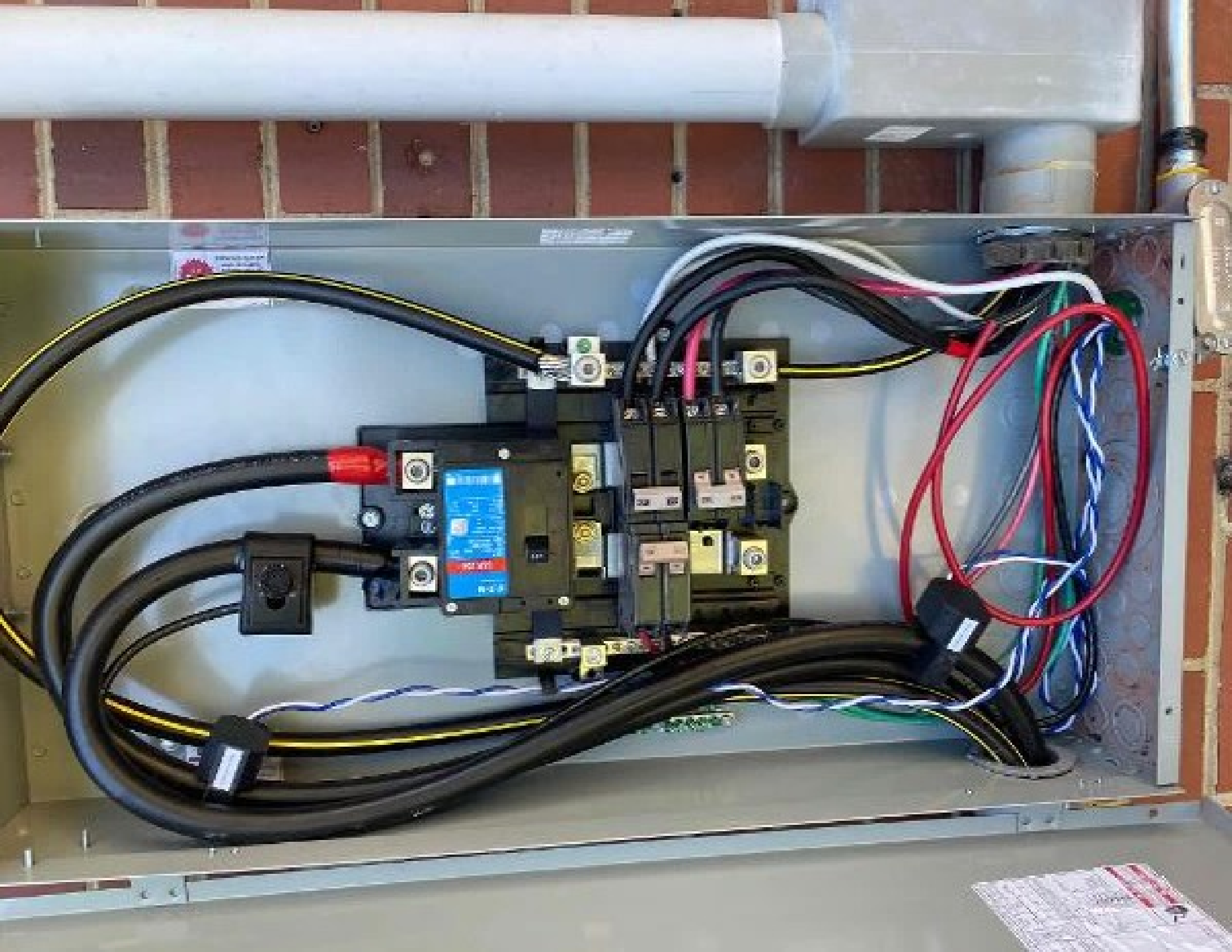




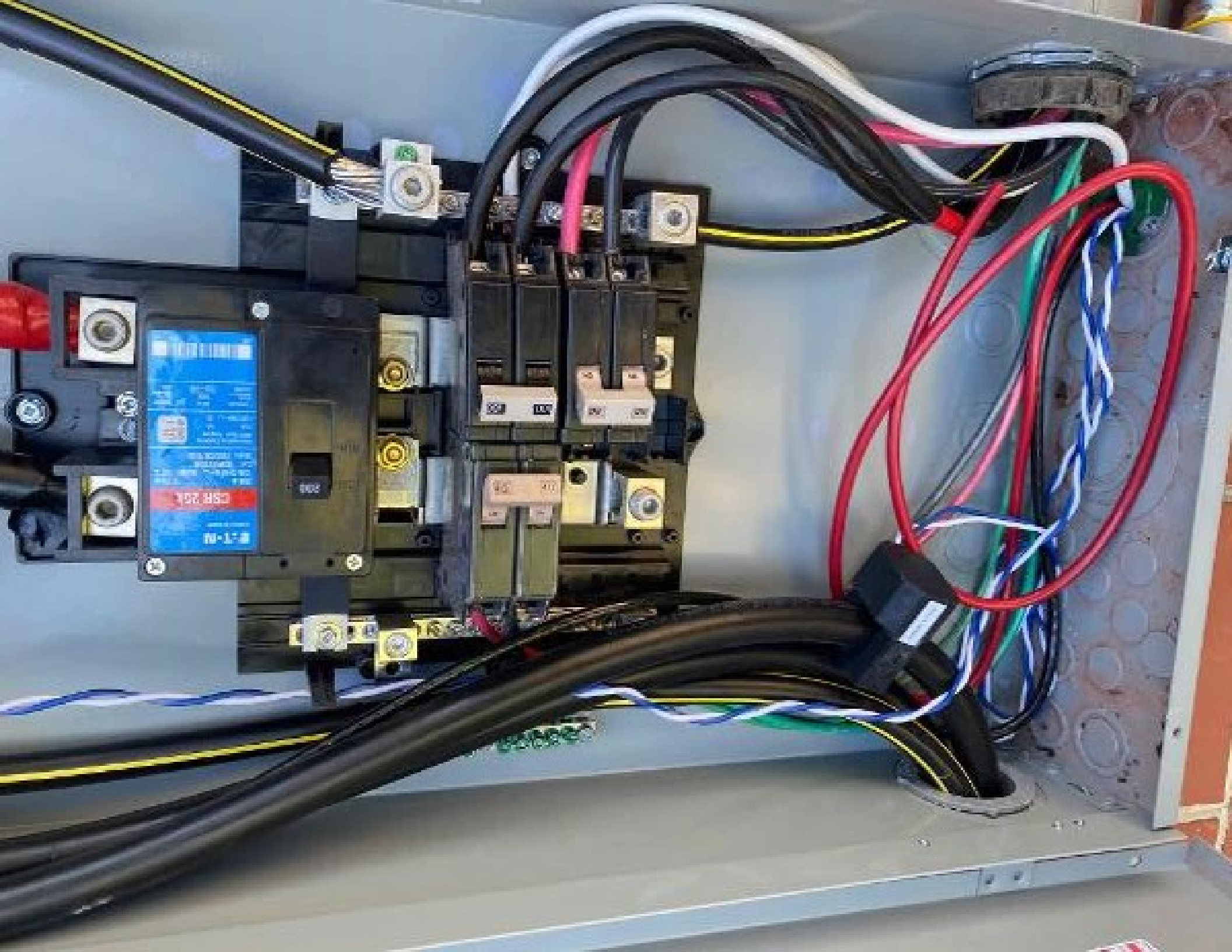






























NO WATER P. 11/14/14

Hart & Cooley





WARNING

ELECTRIC SHOCK HAZARD
TERMINALS ON THE LIFE LINE
LOAD BOSS MAY BE ENERGIZED
IN THE OPEN POSITION



WARNING

ELECTRIC SHOCK HAZARD

TERMINALS ON THE UNIT AND

LOAD SIDES MAY BE ENERGIZED

IN THE OPEN POSITION





Jordan Jones
5088 Christian light
rd.
Fuquay Varina
NC
06/17/21 EW





Jordan Jones
5088 Christian light



Jordan Jones
5088 Christian light
rd.
Fuquay Varina
NC
06/17/21 EW



Jordan Jones
5088 Christian light rd.
Fayetteville NC
06/17/21 EW

Jordan Jones
5088 Christian light
rd.
Fuquay Varina NC
06/17/21 EW



Jordan Jones
5088 Christian light
rd.
Fuquay Varina
NC
06/17/21 EW













Trinasolar

 F01210205308750

Trinasolar

TSM-325DD06M.05(II)



Minimum Power	(P _{min})	220W/25V
Maximum Power Voltage	(V _{mp})	38.0V
Maximum Power Current	(I _{mp})	5.85A
Open Circuit Voltage	(V _{oc})	40.4V/3%
Short Circuit Current	(I _{sc})	10.30A/5%
Minimum Series Fuse		20A
Power Selection		0 - 5W
Module Application		Class A
Maximum System Voltage		600VDC/1000V
Electrical Rating: M51C3AM-1.51R94D45MCF-1000W/m ² Imp 25°C		

For field connections use minimum 4mm² (No. 12AWG) copper wires insulated for a minimum 60°C.



WARNING-ELECTRICAL HAZARD

This module produces electricity when exposed to light. Follow all applicable electrical safety procedures.

- Module has a maximum operating Class E (IEC 60922-2) Non-ISO (see module for performance) Type 2 (UL 1741).
- System IEC Class Rating: See module label instructions for Installation Requirements to be-drift, meets UL950 or other IEC Class Rating with the Product Classifications compatible with system components. Visit the manufacturer's website for more information.
- See module literature for appropriate mating connectors. Visit the manufacturer's website for more information on connector compatibility (see appropriate).



www.trinasolar.com

FF 00001 (000000)

Assembled in Thailand

#UNIRAC

www.unirac.com



25007211
SFM TRUSS 7'2" CMV LWB
Pack Size - 4

WQ/TKB 00000000
Manufacture date: 011-2020



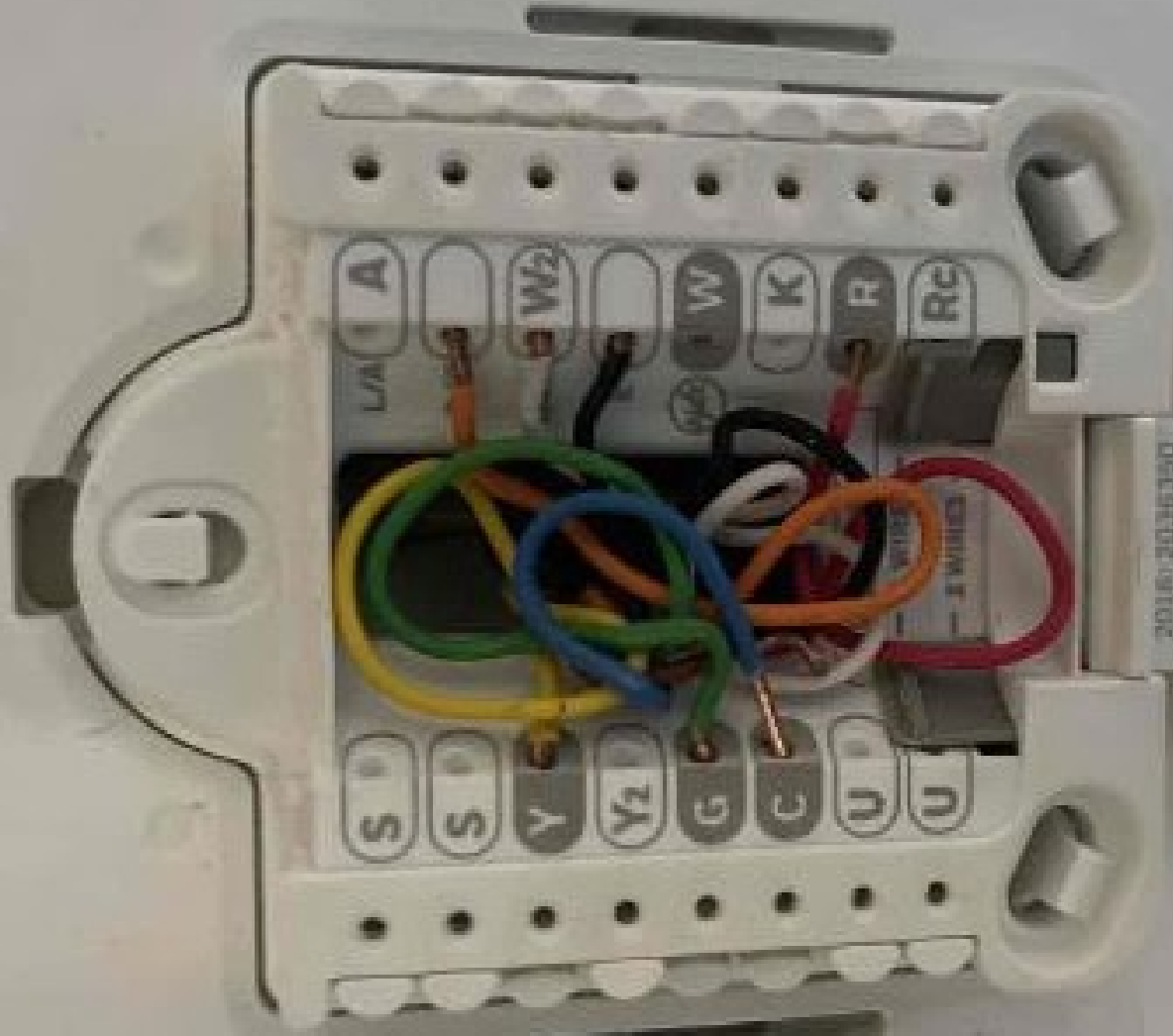
California Proprietary © 2020 Unirac Corporation
Reproduction of this document is prohibited without written permission from Unirac Corporation.



840-00388-14
250VAC 20A
+78°C 2051

700





LA A
W2 W
K R Rc
S S Y Y2 G C U U

2016-2035350
28221048-001

Your exposed
wire should
be this length
1/4" to 3/8"

UWP

0" 1/4" 3/8" 1"



⚠ WARNING

ELECTRIC SHOCK HAZARD
TERMINALS ON THE LINE AND
LOAD SIDES MAY BE ENERGIZED
IN THE OPEN POSITION

⚠ WARNING
GENERAL: THIS
ELECTRIC PANEL IS
DESIGNED FOR THE
INSTALLATION OF
ELECTRICAL DEVICES
AND EQUIPMENT.
IT IS NOT TO BE
USED AS A
CONTROL PANEL FOR
ELECTRICAL
EQUIPMENT.

⚠ WARNING
PHOTOVOLTAIC SYSTEM
AC DISCONNECT

USE TO DISCONNECT SYSTEM FROM
AC SUPPLY FOR MAINTENANCE OR
REPAIR. OPERATING POSITION: OFF

RAPID SHUTDOWN
SOLAR PV SYSTEM

PHOTOVOLTAIC SYSTEM
AC DISCONNECT

⚠ WARNING

PHOTOVOLTAIC SYSTEM
AC DISCONNECT
USE TO DISCONNECT SYSTEM FROM
AC SUPPLY FOR MAINTENANCE OR
REPAIR. OPERATING POSITION: OFF

 ENPHASE

IQ7+

IQ 7+ grid-tied inverter
For Enphase power information, visit <http://enphase.com>

Power Factor Range: 0.98
Efficiency: 97.5%
Max. AC Output: 7.5 kW
Max. Input Power: 10 kW
AC Output Voltage: 240VAC
AC Output Frequency: 60Hz
Operating Temperature: -40°C to +40°C
Operating Humidity: 5% to 95%
Max. AC Output Current: 32A
Max. AC Output Voltage: 240VAC
Max. AC Output Frequency: 60Hz
Max. AC Output Power: 7.5 kW
Max. AC Output Energy: 10 kWh
Max. AC Output Voltage: 240VAC
Max. AC Output Frequency: 60Hz
Max. AC Output Power: 7.5 kW
Max. AC Output Energy: 10 kWh



This device complies with part 15 of the FCC rules. Operation is subject to the following two conditions: (1) This device may not cause harmful interference, and (2) this device must accept any interference received, including interference that may cause undesired operation.

CAUTION: NEVER TOUCH A BATTERY'S POSITIVE OR NEGATIVE TERMINALS AT THE SAME TIME. ALWAYS WEAR YOUR SAFETY GLASSES. ALWAYS WEAR YOUR GLOVES. ALWAYS WEAR YOUR SAFETY BELT. ALWAYS WEAR YOUR SAFETY HAT. ALWAYS WEAR YOUR SAFETY SHOES. ALWAYS WEAR YOUR SAFETY GOGGLES. ALWAYS WEAR YOUR SAFETY VEST. ALWAYS WEAR YOUR SAFETY HELMET. ALWAYS WEAR YOUR SAFETY GEAR.

WARNING: ALWAYS WEAR YOUR SAFETY GEAR. ALWAYS WEAR YOUR SAFETY GEAR. ALWAYS WEAR YOUR SAFETY GEAR. ALWAYS WEAR YOUR SAFETY GEAR. ALWAYS WEAR YOUR SAFETY GEAR. ALWAYS WEAR YOUR SAFETY GEAR. ALWAYS WEAR YOUR SAFETY GEAR. ALWAYS WEAR YOUR SAFETY GEAR.

ATTENTION: ALWAYS WEAR YOUR SAFETY GEAR. ALWAYS WEAR YOUR SAFETY GEAR. ALWAYS WEAR YOUR SAFETY GEAR. ALWAYS WEAR YOUR SAFETY GEAR. ALWAYS WEAR YOUR SAFETY GEAR. ALWAYS WEAR YOUR SAFETY GEAR. ALWAYS WEAR YOUR SAFETY GEAR. ALWAYS WEAR YOUR SAFETY GEAR.

ENPHASE ENERGY SYSTEMS, INC.
16001 NE 28th Street, Redmond, WA 97053
Tel: 509.225.4000
www.enphase.com

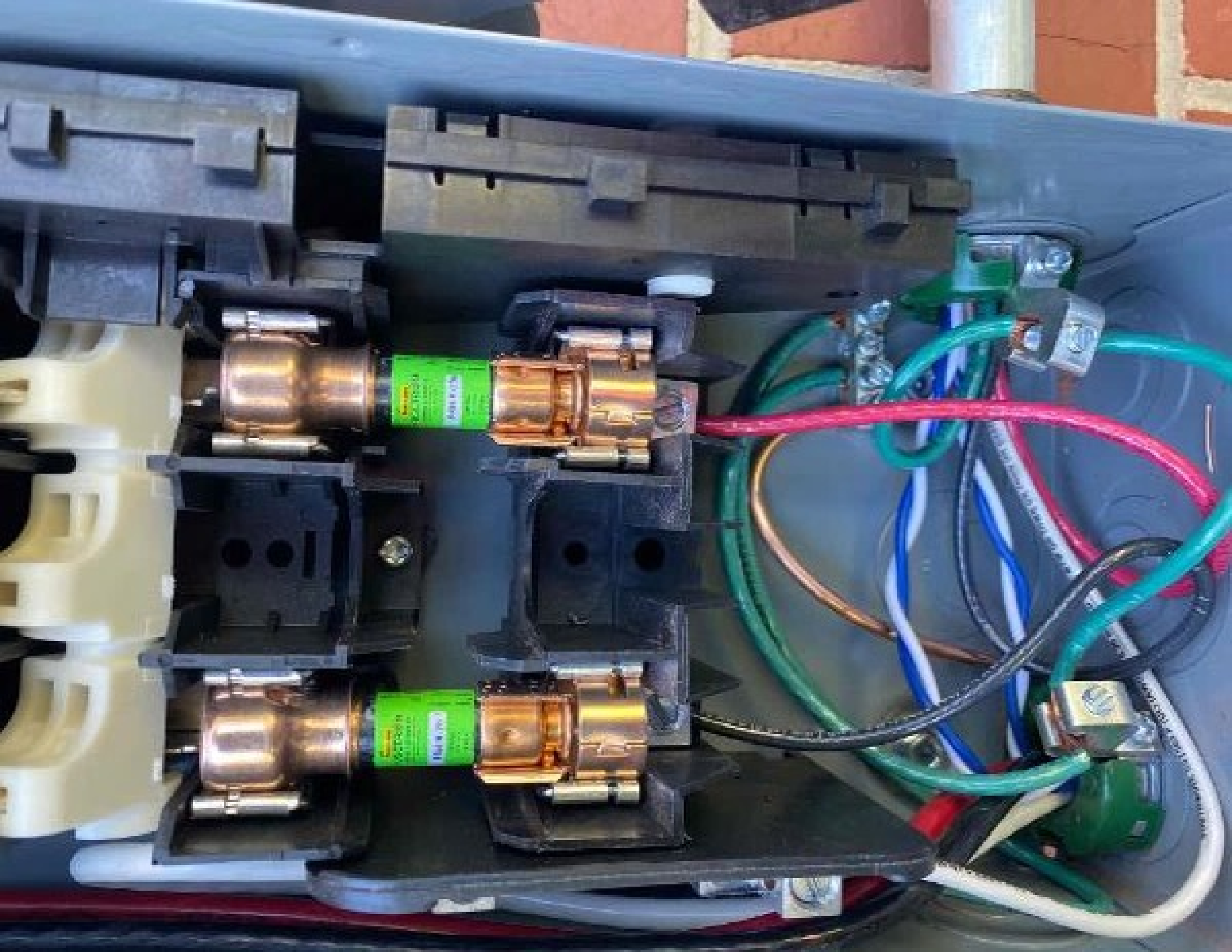
ENPHASE ENERGY SYSTEMS, INC.
16001 NE 28th Street, Redmond, WA 97053
Tel: 509.225.4000
www.enphase.com













E121488
3/4" COVER





ENPHASE

WARNING
ELECTRIC SHOCK CAN OCCUR
WHEN CONTACT IS MADE WITH
LIVE ELECTRICAL CIRCUITS.
DO NOT TOUCH ELECTRICAL
COMPONENTS.
WARNING
DO NOT TOUCH ELECTRICAL
COMPONENTS.
WARNING
ELECTRIC SHOCK CAN OCCUR
WHEN CONTACT IS MADE WITH
LIVE ELECTRICAL CIRCUITS.
DO NOT TOUCH ELECTRICAL
COMPONENTS.
WARNING
ELECTRIC SHOCK CAN OCCUR
WHEN CONTACT IS MADE WITH
LIVE ELECTRICAL CIRCUITS.
DO NOT TOUCH ELECTRICAL
COMPONENTS.



WARNING
ELECTRIC SHOCK CAN OCCUR
WHEN CONTACT IS MADE WITH
LIVE ELECTRICAL CIRCUITS.
DO NOT TOUCH ELECTRICAL
COMPONENTS.
WARNING
ELECTRIC SHOCK CAN OCCUR
WHEN CONTACT IS MADE WITH
LIVE ELECTRICAL CIRCUITS.
DO NOT TOUCH ELECTRICAL
COMPONENTS.

RAPID SHUTDOWN
SOLAR PV SYSTEM





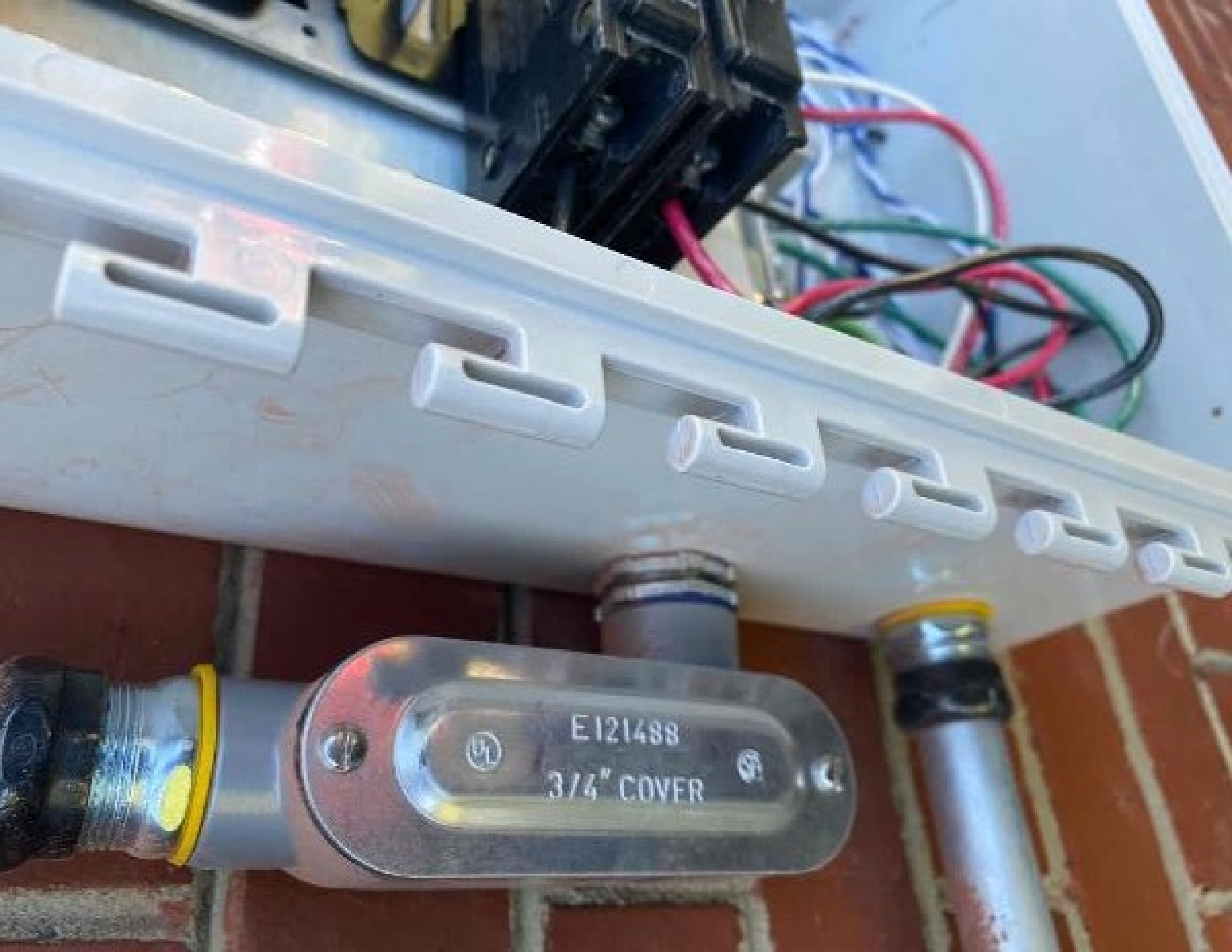






E121438
3/4" COVER





E121488
3/4" COVER



88

ER











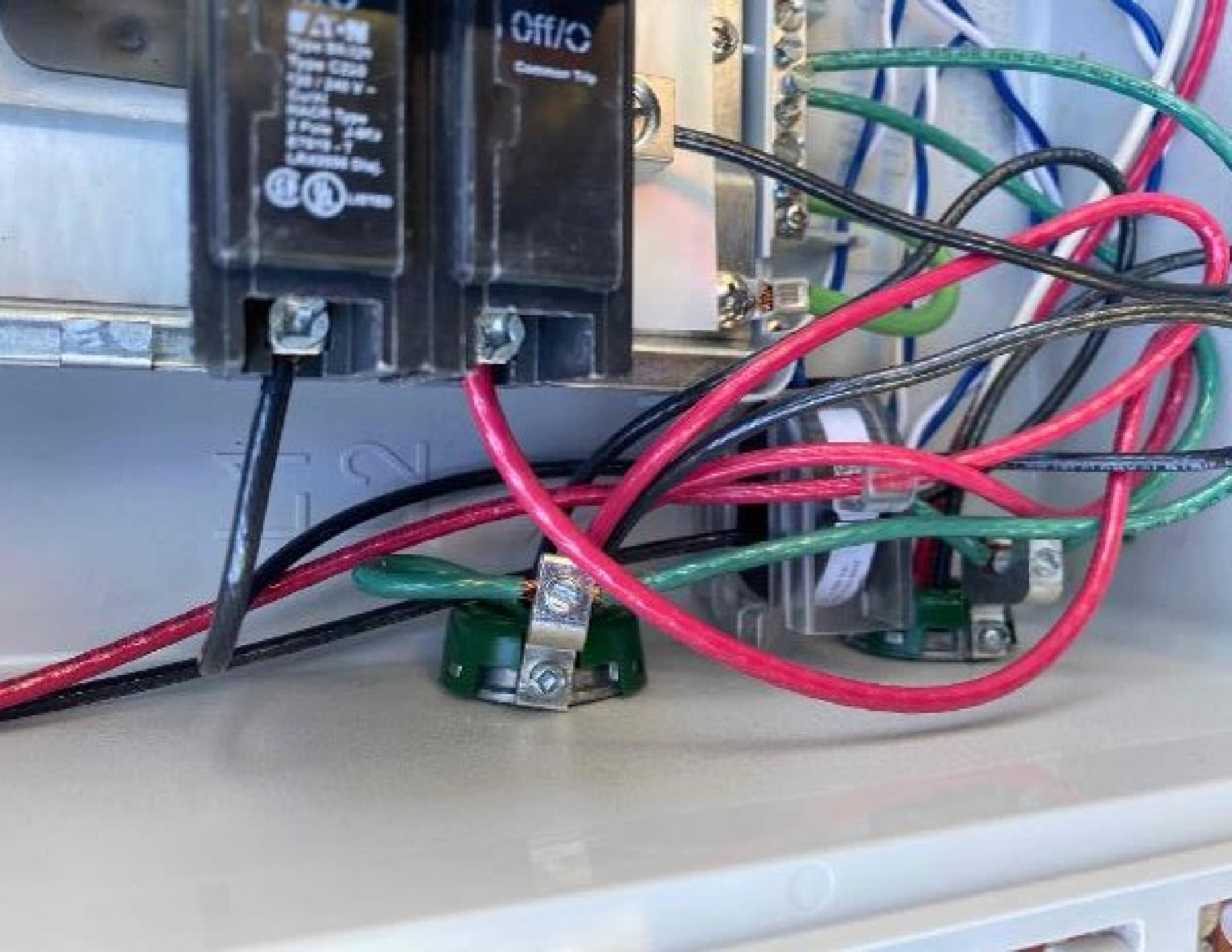


ONLY

100 VOLT
15 AMP

CONCATENATED 210651 1590

100 VOLT 15 AMP



Off/C

Common Type

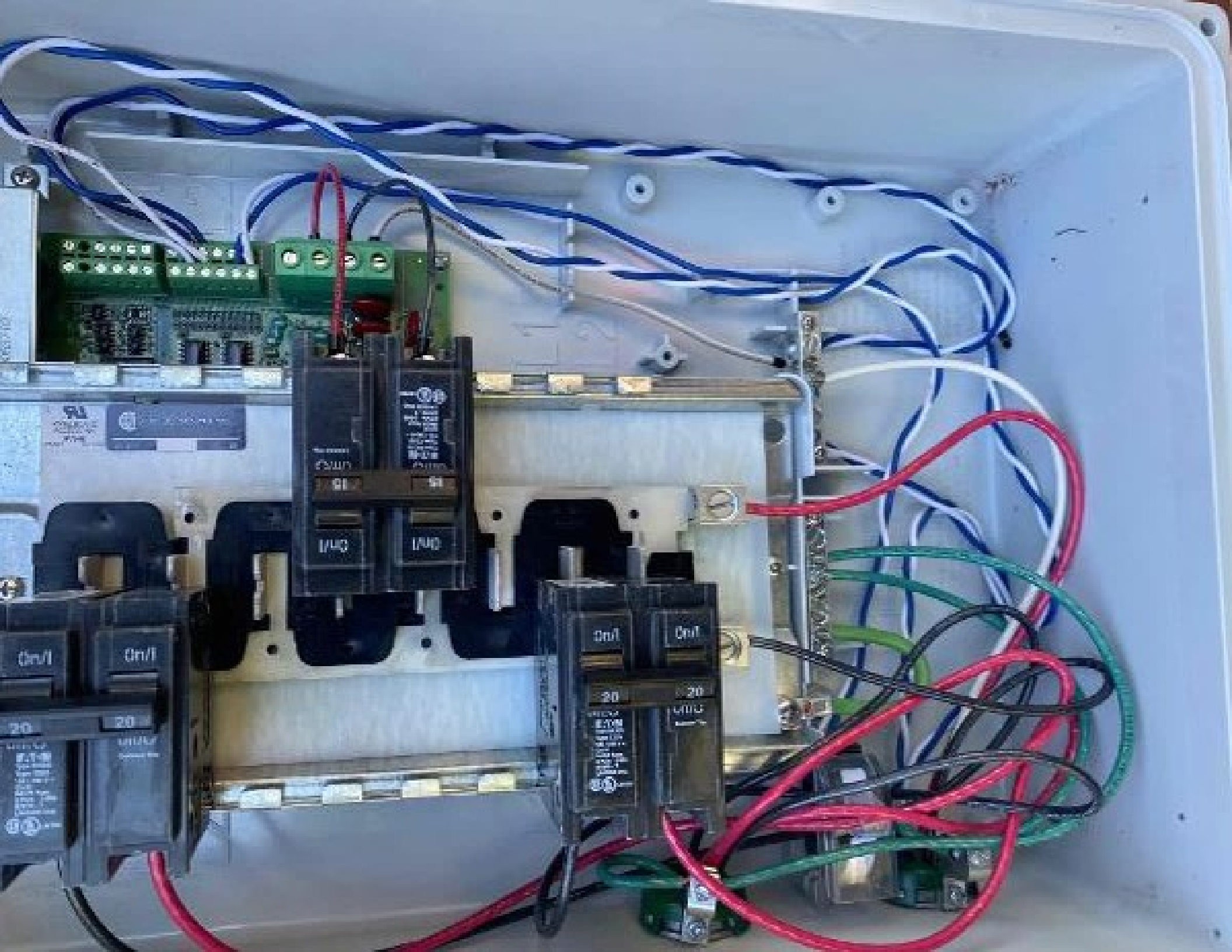


10/100/1000 Mbps
RJ45
1000 Base-T
1000 Base-TX
1000 Base-SX
1000 Base-LX
1000 Base-EX
1000 Base-FX
1000 Base-PLX
1000 Base-PRX
1000 Base-ERX
1000 Base-EXR
1000 Base-PLXR
1000 Base-PRXR
1000 Base-EXR
1000 Base-EXR

1 2



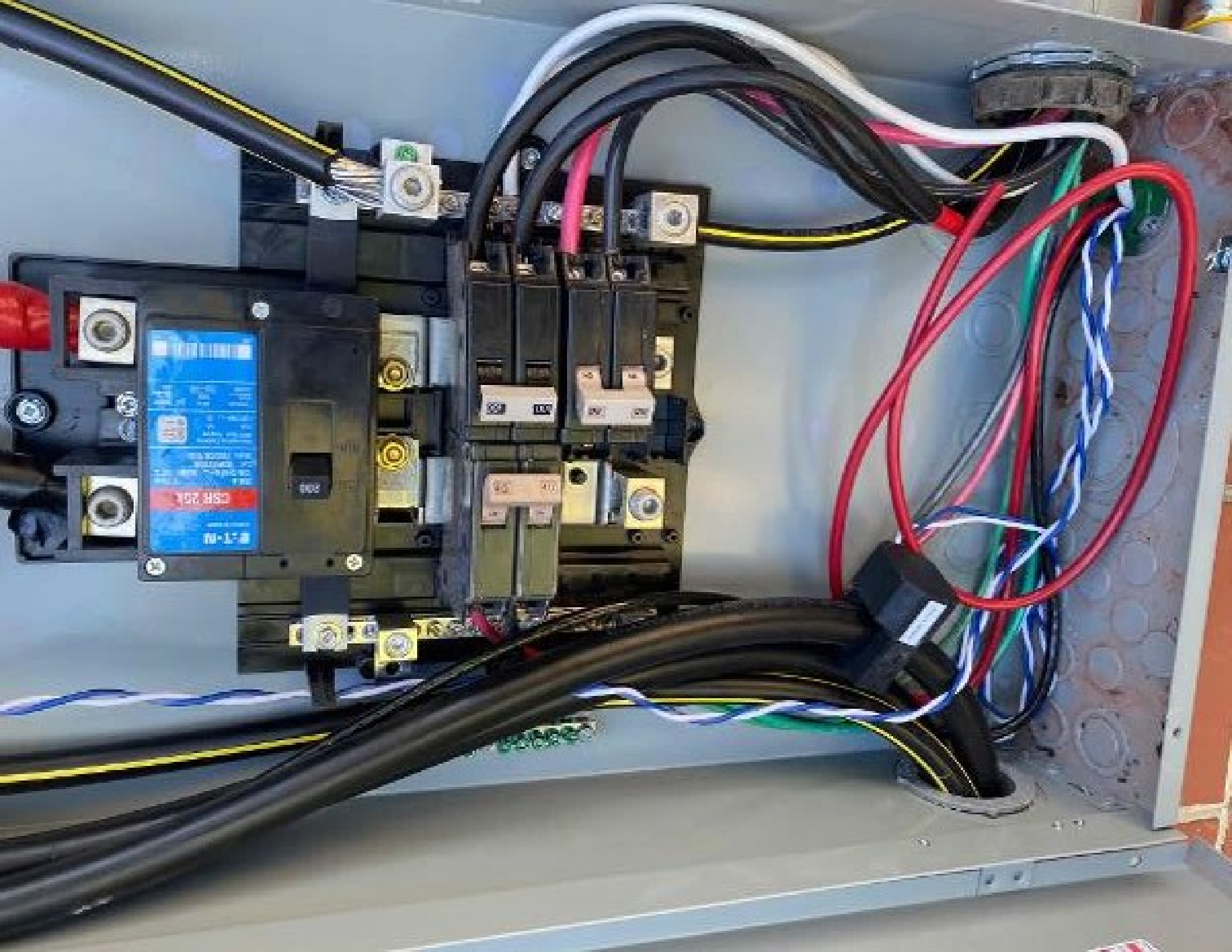










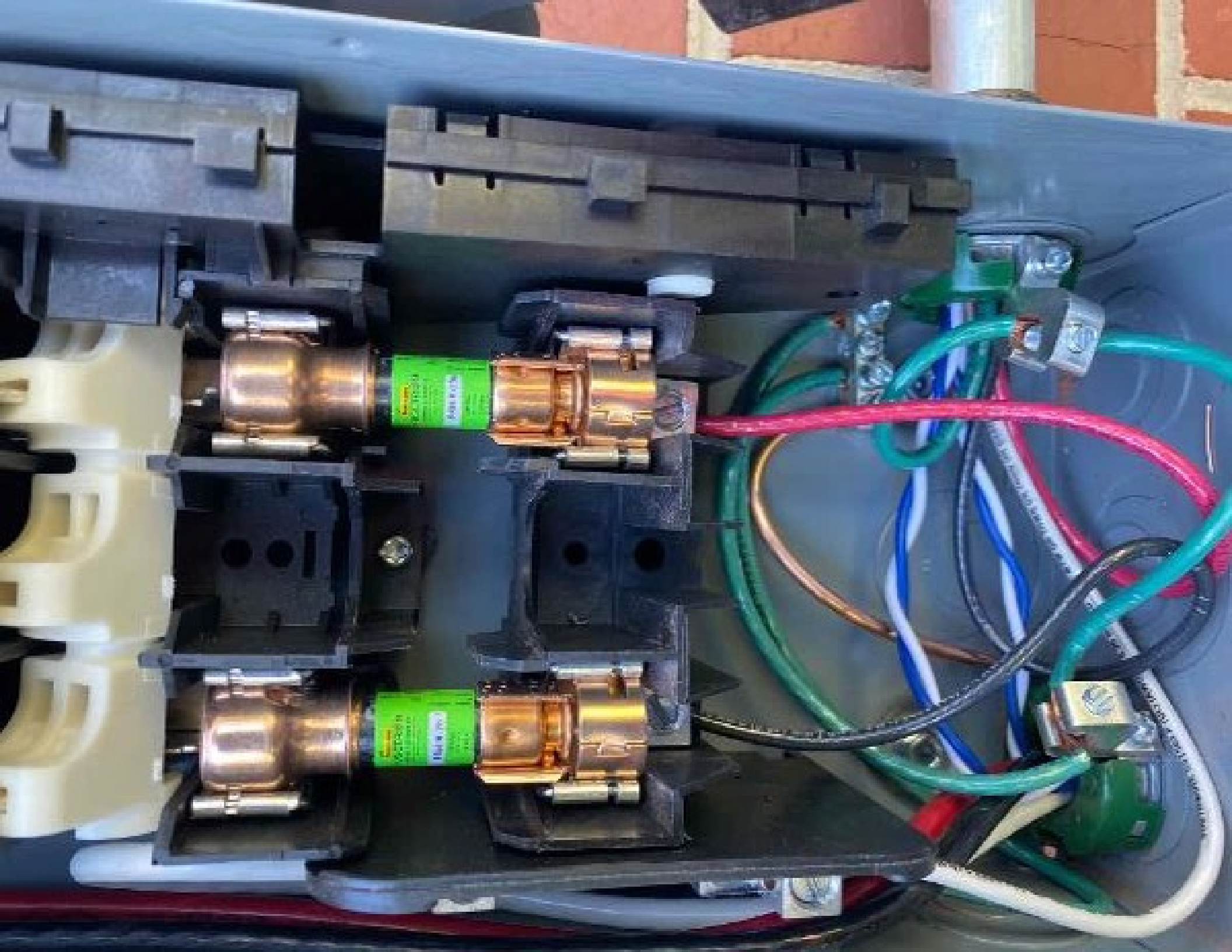


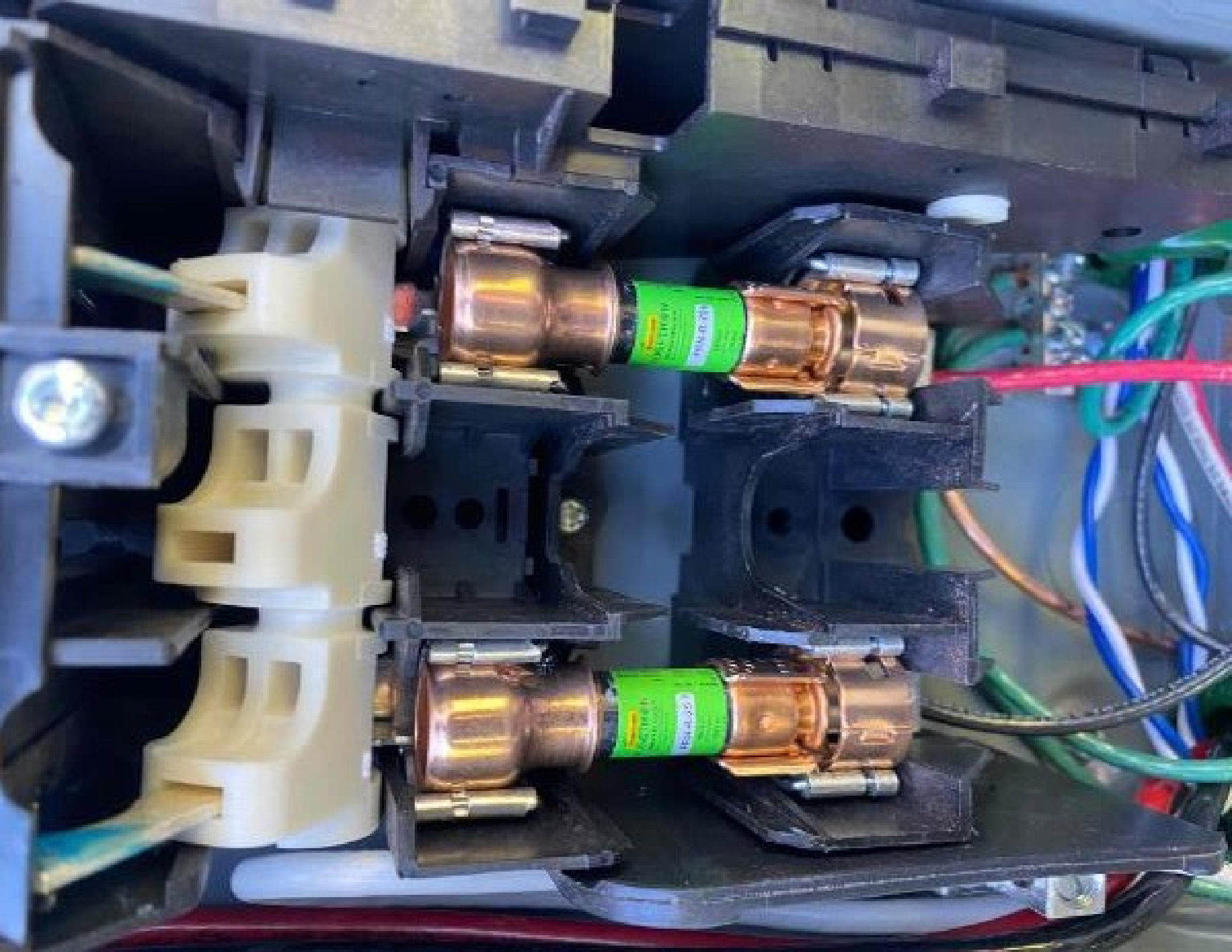


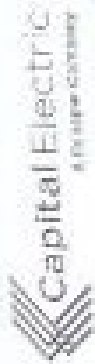












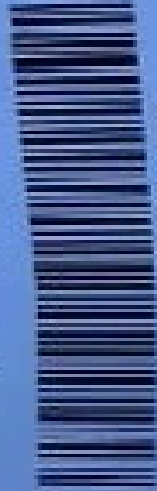
CAPITAL ELECTRIC
 4801 STRUBB-CREEK DRIVE
 DURHAM, NC 27703-6001
 919-281-7550 Fax 919-281-7134

Robert George@capeltr.com or rgeor@capeltr.com

SHIP TO:
 BLUE RAVEN SOLAR
 370 BOWEN RD
 CHARLOTTE, NC 28407
 800-377-4480 FAX:

SHIP TO:
 BLUE RAVEN SOLAR
 BLUE RAVEN SOLAR
 JORDAN JONES
 5086 CHRISTIAN LIGHT RD
 FOGUAY VARIANA, NC 27525-6121
 800-377-4480 FAX:

Ship Ticket



5044587063.002

SHIP V#
 0020 DURHAM
 P#
 1 of 1

ORDER NO	ORDER DATE	SHIP TO	ORDER NO	SHIP TO	ORDER NO	SHIP TO
324611	246806	JORDAN JONES 345.0000	5044587063.002	JORDAN JONES 345.0000	5044587063.002	JORDAN JONES 345.0000
RCB GEORGE	2014	RCB GEORGE	2014	RCB GEORGE	2014	RCB GEORGE
1 ea		1 ea		1 ea		1 ea
<p>***** Shipping Instructions *****</p> <p>* GC #1</p> <p>* DELIVER 8AM THURSDAY 6/17 10 TOMBS</p> <p>* RESIDENCE</p> <p>* ATTN: ELLI WILLIAMS 643-831-4600</p> <p>* OR: ZAK ANDERSON 918-792-4253</p> <p>*****</p> <p>ILSCO ITC 350-470-B</p> <p>LFC 171350-470 T11470-10 T UL CSA</p> <p>BAG 1</p> <p>Procured Item*</p> <p>Your line# 27</p> <p>**** 1 Tagged to 2803592532 ****</p>						

Stage Loc: 074

Total: CTR# 1 COLL BINS 0 BEEL

TERMS & CONDITIONS

***** THIS IS A PRELIMINARY SHIPMENT *****



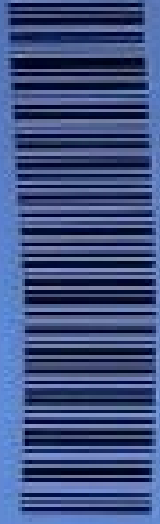
Capital Electric
A Complete Service

CAPITAL ELECTRIC
4001 STARRUP CHECK DRIVE
DURHAM, NC 27703-9081
919-847-7000 Fax 919-844-7104

Robert George@capitalelectricsupply.com

SOLD TO:

BLUE RAVEN SOLAR
C/O CONSPAR KEY ACCOUNTS LLC
4400 LEEDS AVE STE 500
CHARLOTTE, NC 28407
800-377-4480 FAX



6044587063-001

Ship Ticket

SHIP VIA
0020 DURHAM
PAGE
1 of 5

SHIP TO:
BLUE RAVEN SOLAR
3106 RAVEN SOLAR
JORDAN JONES
5086 CHRISTIAN LIGHT RD
FOUGAY VARDINA, NC 27526-6121
800-377-4480 FAX

DATE	QTY	UNIT	DESCRIPTION	SHIP TO	SHIP DATE	EST. NO.
3/24/11	346806		JORDAN JONES 943-9904			
MOB. GEORGE			8044587063-001	8000	06/17/21	
20	ea		***** Shipping Instructions ***** * NC 01 * DELIVER 80AM THURSDAY 6/17 TO JONES * RESIDENCE * ATTN: ELI WILLIAMS 943-901-4600 * OR: ZAK ANDERSON 916-792-4252 ***** TRINASOL TSM-325-ED06M.05(II) 325W BLACK FRAME BLACK BACKSHEET Your # TS 325 TSM-ED06M.05(II) Your Line# 1			
20	ea		EXPENS 107-60-2-US EMPHASE I3 7 MICROINVERTER COMPATIBLE WITH 60 CELL PV MODULES 240VA PEAK POWER MC4 DC CONNECTORS Your Line# 2			
20	ea		EXPENS Q-12-17-240 Q CABLE FOR 60 CELL 1.7M LANDSCAPE MODULE PITCH COAX PITCH IS 2.3M Your # Q-12-17-240 Your Line# 3			
20	ea		DMIRAC 006114M MLPE MOUNT ASSY Your # 006114M Your Line# 4			
200	ea		200 ea BUR ACC-PPV180			

CAPITAL ELECTRIC
5000 STUBBINS CREEK DRIVE
DURHAM, NC 27703-4001
919-284-7000 Fax 919-284-7100



8044587063.001

Robert George@capitalelectricsupply.com

8060 TO: BLUE HAVEN SOLAR
C/O SONNEPAR REV ACCOUNTS LLC
4400 BREDS AVI STE 500
CHARLESTON, SC 29407
800-377-4480 Fax:

SHIP TO: BLUE HAVEN SOLAR
BLUE HAVEN SOLAR
JORDAN JONES
5088 CHRISTIAN LIGHT RD
FUGGAY VARIANA, NC 27526-6121
800-377-4480 Fax:

ORDER #	SHIP QTY	SHIP DATE	ORDER #	SHIP DATE	
324611	546806		JORDAN JONES		
			8044587063.001		
ORDER #	SHIP QTY	SHIP DATE	DESCRIPTION	UNIT PRICE	DATE
			WILEY MODULE CLIP Your # ACC-PPV160 Your Line# 5		
10	10 ea		UNIRAC 2560720 SPM TRIMRAIL 72 UNIV DRK Your Line# 6		06/17/21
5	5 ea		UNIRAC 2501200 SPM TRIM SPLICE DRK Your Line# 7		
13	13 ea		UNIRAC 0042010 FLASHKIT SPM TRIM COMP DARK Your Line# 8		
16	16 ea		UNIRAC 2500200 SPX MICROPAIL 2 INCH Your Line# 9		
15	15 ea		UNIRAC 2500100 SPM SPLICE 6.5 INCH Your Line# 10		
25	25 ea		UNIRAC 0042710 FLASHKIT SPM SLIDER COMP DARK Your # #NAME? Your Line# 11		
5	5 ea		UNIRAC 0081000 SPM TRIM BONDING CLAMP		



Capital Electric
A World Company

CAPITAL ELECTRIC
4001 STARRUP CREEK DRIVE
DURHAM, NC 27709-0001
919-286-0000 Fax 919-286-0704

Robert.George@capelcoelectric.com

SOLD TO:

BLUE HAVEN SOLAR
C/O CONEPAR KEY ACCOUNTS LLC
4407 LERDS AVB STE 500
CHARLESTON, SC 29407
800-377-4480 Fax:



8044587063.001

Ship Ticket

SHIP TO:
2020 CONSTAT
REV
3 of 5

SHIP TO:
BLUE HAVEN SOLAR
BLUE HAVEN SOLAR
JORDAN JONES
5000 CHRISTIAN LIGHT RD
POQUAY VARIANA, NC 27826-8121
800-377-4480 Fax:

ORDER NO	SHIP TO	ORDER NO	SHIP TO	DATE	SHIP DATE
324611	JORDAN JONES	345806	JORDAN JONES	06/17/21	06/17/21
800 01	SHIP TO	800 01	SHIP TO	06/17/21	06/17/21
20	ea	UNIRAC 2501100	SFM TRIMTAIL UNIV CLIP W/HDM		
1	ea	UNIRAC 0080092	ILSCO 1AY IN 203		
0	ea	UNIRAC 0080000	SFM N/S BONDING CLAMP		
5	ea	UNIRAC 2501300	SFM TRIM END CAPS		
1	ea	SQD D222NRB	SWITCH FUSIBLE GD 240V 80A 2P		
2	ea	BUSS FRN-R-25	250V RK5 TD FUSE		
2	ea	BUSS NO.263-R	60/30A R REDUCER		



Capital Electric
A Danapur Company

CAPITAL ELECTRIC
4601 STURGEON CREEK DRIVE
DURHAM, NC 27703-4001
919-544-0833 FAX 919-480-7104

Robert George Field Sales@capital-electric.com

SOLD TO:

BLUE RAVEN SOLAR
C/O SOVEREIGN KEY ACCOUNTS LLC
4430 LEEDS AVE STE 500
CHARLESTON, SC 29407
803-377-4480 Fax



8044587063.001

Ship Ticket

SHIP #	
DATE	06/17/21
PAGE	1 of 5

SHIP TO:
BLUE RAVEN SOLAR
BLUE RAVEN SOLAR
JORDAN JONES
5088 CHRISTIAN LIGHT RD
FUGGAY VARIANA, NC 27526-6121
803-377-4480 Fax

QUANTITY	UNIT	DESCRIPTION	QTY	UNIT PRICE	TOTAL PRICE	DATE
1236.1	WHR	JORDAN JONES 8044587063.001				06/17/21
1	ea	YOUR # NO.253 BUSB TR YOUR LINES# 19				
2	ea	EXPENS 1-1Q-AM1-240-3-RS AC COMBIBER BOX W/ 1Q BRVGY PCB 60A SINGLE-PHASE W/ PAIR OF CTR (CT-100-SPLIT) Your Lines# 20				
2	ea	C-H BR220 2P 25A CB Your # BR220 Your Lines# 21				
2	ea	ERC C858 5/8 GROUND ROD CLAMP Your # 5/8ingroundrod copper Your Lines# 22				
1	ea	ERC 615880 5/8X8FT CU GROUND ROD 10KIL 5/8ingroundrod copper 5/8" Copper Ground Rod - 8 ft Your Lines# 23				
2	ea	EUR GAR3902 1/2-1IN GRD CONN Ground Clamp Water Pipe Ground Clamp Your Lines# 24				



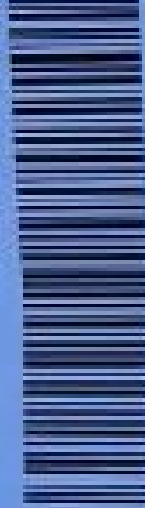
Capital Electric
A Sunbelt Company

CAPITAL ELECTRIC
401 STRIPUP CREEK DRIVE
DURHAM, NC 27701-0001
919-384-7033 Fax 919-384-7334

Robert George @ capital-electric-supply.com

SOLD TO:
BLUE RAVEN SOLAR
C/O SCHEPPE KEY ACCOUNTS LLC
4400 WILSON AVE STE 500
CHARLOTTE, NC 28407
919-377-4400 Fax:

SHIP TO:
BLUE RAVEN SOLAR
BLUE RAVEN SOLAR
JORDAN JONES
5088 CHRISTIAN LIGHT RD
FUQUAY VARIANA, NC 27586-6121
919-377-4480 Fax:



9044587063.001

Ship Ticket

SHIP TO:
5088 CHRISTIAN LIGHT RD
FUQUAY VARIANA, NC 27586-6121
919-377-4480 Fax:

QUANTITY	SHIP CTY	#	DESCRIPTION	UNIT PRICE	EXT PRICE	SHIP DATE
1	NC	1 ea	ECOBEN BB-STAT3LUP-02 ECOBEN LIFE PRO THERMOSTAT FORMERLY (EB-STAT3LITE) Your # BBSTAT-B3-02 Your Line# 25	346805	346805	06/17/21
18	NC	18 ea	3V3 LED8.5A19F92220VVRP2 (73886) LED A19 8.5W BARE 800 LUMEN 2700K 11000 LIFE LEE Bulb Your Line# 26	11000	198000	06/17/21
1	NC	1 ea	EXSOLAR JB-1 PV ROOFTOP JUNCTION BOX CL1741 TYPE 3R BLACK Your Line# 28	11000	11000	06/17/21
1	NC	1 ea	APL LPCG757 3/4 .375/.750 HMERDCOHN Your # LPCG757 Your Line# 29	11000	11000	06/17/21
1	NC	1 ea	CAMBAR DBS-YARD-SIGN BLUE RAVEN SOLAR YARD SIGN Your Line# 30	11000	11000	06/17/21

Stage Loc: BAY 2
Totals: CTNS 2 COILS 0 BOXES 222L

TERMS & CONDITIONS

SHIPPING AND HANDLING CHARGES TO BE PAID BY BUYER. ALL ITEMS ARE SHIPPED FOB DUNHAM, NC. BUYER IS RESPONSIBLE FOR OBTAINING ALL NECESSARY PERMITS AND INSURANCE. CAPITAL ELECTRIC ASSUMES NO LIABILITY FOR DAMAGE TO OR LOSS OF GOODS IN TRANSIT OR AT DESTINATION. ALL SALES ARE FINAL. RETURNS ARE ACCEPTED ONLY IF GOODS ARE UNUSED AND IN ORIGINAL PACKAGING. SEE PRICE LIST FOR COMPLETE TERMS AND CONDITIONS.

Photovoltaic Combiner Box X-1Q-AM1-240-3-ES

Electrical ratings

Voltage 240VAC, 60Hz
DG Breakers 80A MAX (combined)
DG Inputs 64A MAX (combined)
Output 65A MAX, 90A MAX feeder OCPD
Temperature 46°C MAX ambient
Use only Eaton BR series Breakers (60A max)

S/N:

202117056633

P/N:

883-00820 11

**Dedicated solar and DG Combiner Box - do not add loads 10 AMP
Envooy Breaker not used for backfeed**

Connection	Wire sizes	Torque
DG Breaker	14-10 AWG	2.2 Nm (20 lb-in)
	8 AWG	2.8 Nm (25 lb-in)
	6-4 AWG	3.0 Nm (27 lb-in)
60A Circuit Breaker only	4-1/0 AWG	5.0 Nm (45 lb-in)
Neutral and ground	14-1/0 AWG	5.0 Nm (45 lb-in)
	6-1/8 AWG	2.2 Nm (20 lb-in)
Large screw	10-4 AWG	5.0 Nm (45 lb-in)
	3-7/8 AWG	3.8 Nm (30 lb-in)
Main lug		

Copper conductors only, rated min. 75°C.
Follow NEMA 70 (NEC) or CSA C22.1 part 1, and all local codes.





202 114 0000000

202 114 0000000

202 114 0000000

202 114 0000000

202 114 0000000

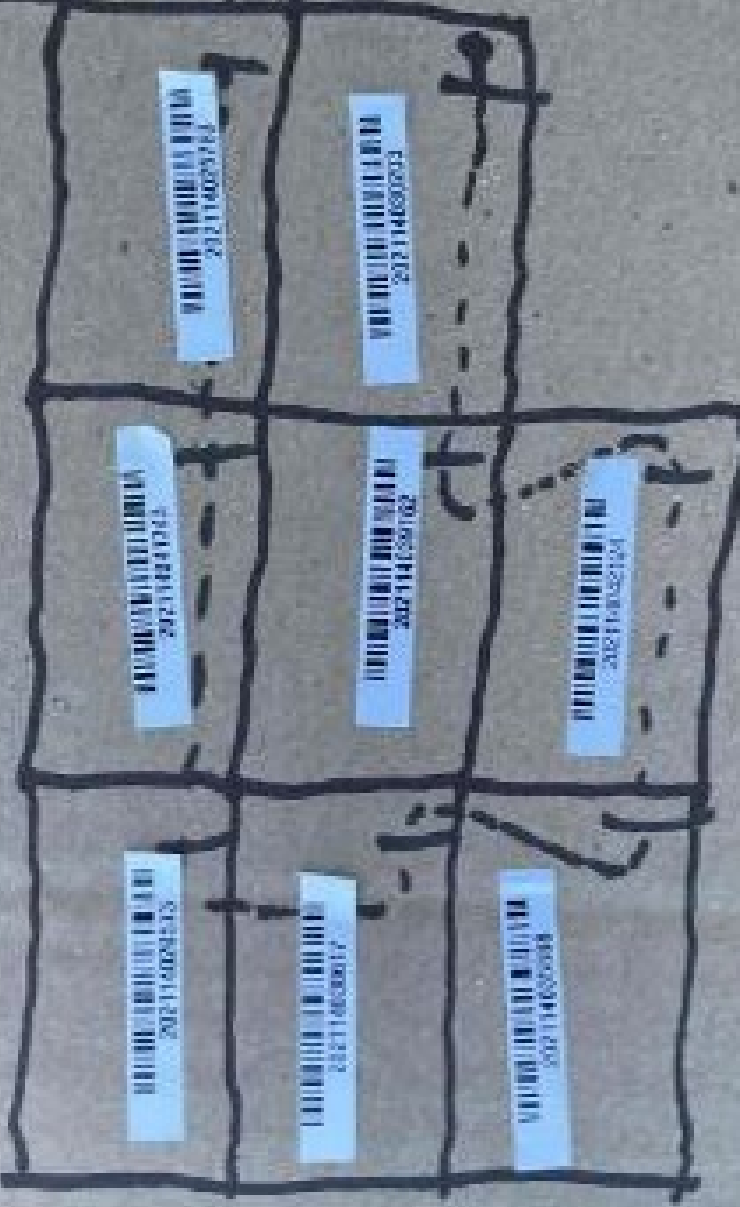
202 114 0000000

202 114 0000000

202 114 0000000

202 114 0000000

202 114 0000000



202114020634

2021140209403

202114031007

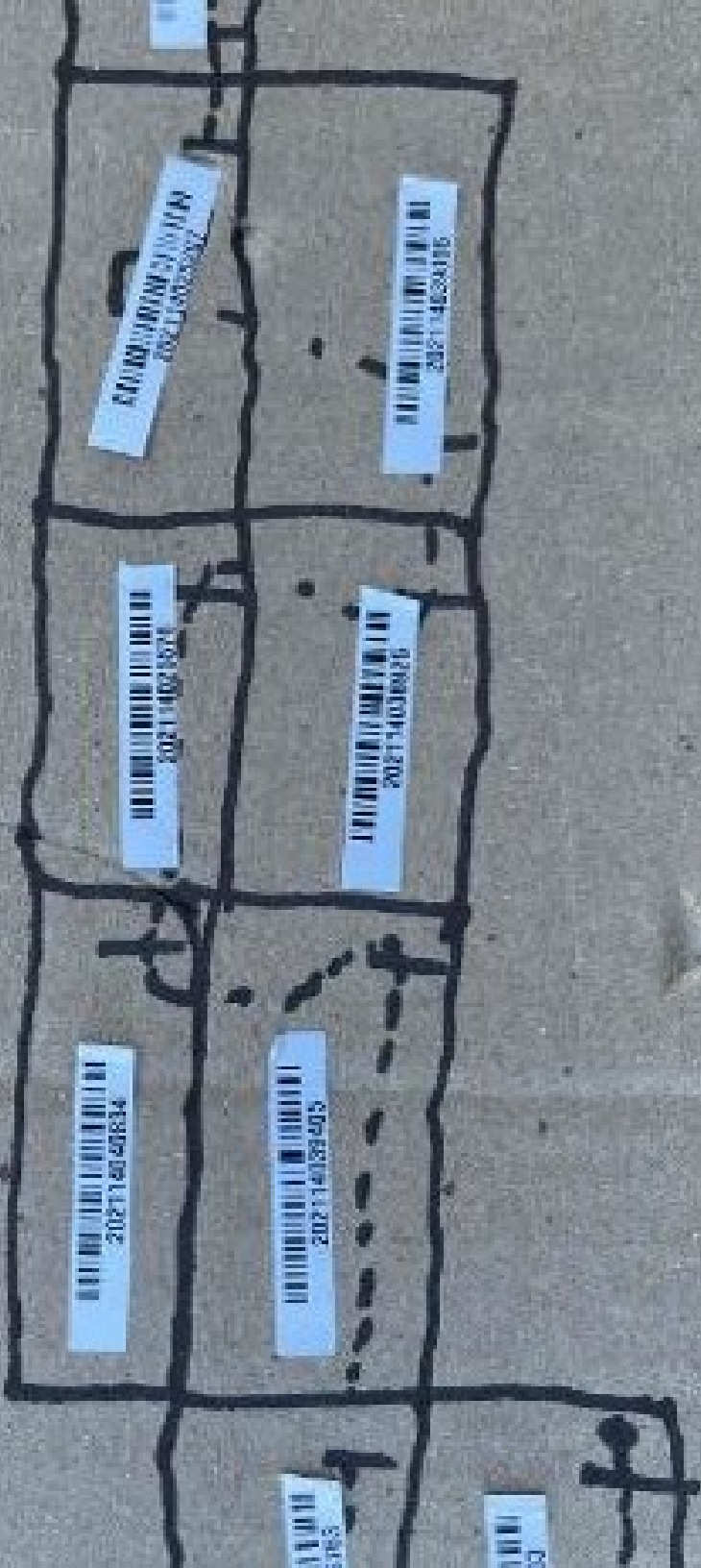
202114030926

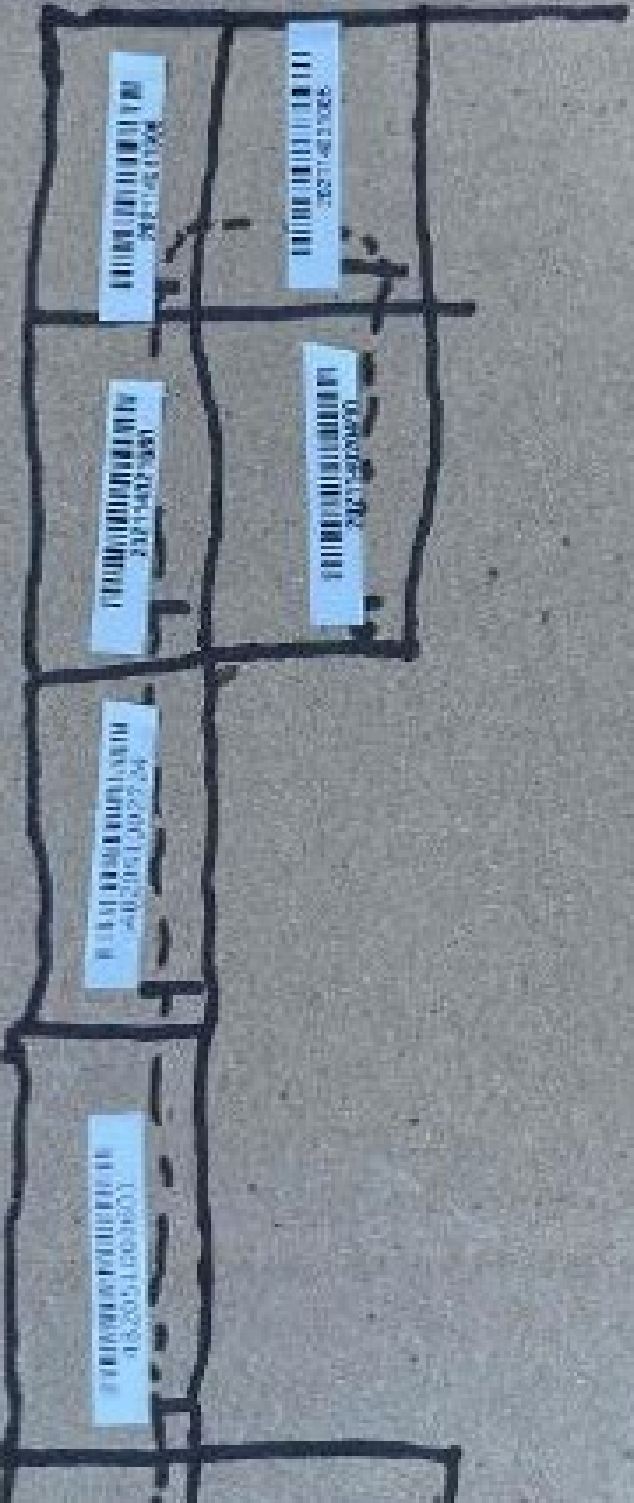
202114030926

202114030195

2021140309403

202114030195





350-11-02-1100

350-11-02-1005

350-11-02-1000

350-11-02-1005

350-11-02-1000

350-11-02-1000

TrinaSolar
F01210205308750

TrinaSolar

TSM-325DD06M.05(II)



Maximum Power	(P _{max})	325W±3%*
Maximum Power Voltage	(V _{mp})	53.6V
Maximum Power Current	(I _{mp})	9.87A
Open Circuit Voltage	(V _{oc})	40.4V±3%*
Short Circuit Current	(I _{sc})	10.30A±4%*
Maximum Series Fuse Power Selection		20A
Module Application		6 ~ 5W
Maximum System Voltage		Class A
Electrical Rating At STC: AM=1.5 IRRADIANCE=1000W/m ² Temp.=25 °C		IFC1000V01.1000V

For field connections, use minimum 4mm²(No. 12AWG)copper wires insulated for a minimum 80 °C.



WARNING-ELECTRICAL HAZARD

This module produces electricity when exposed to light. Follow all applicable electrical safety precautions.

- Module Fire Resistance Rating Class C. (for CSA C22.2 No.61730 type module fire performance Type 2 for UL41730)
- System Fire Class Rating: See installation instructions for installation requirements to enF. mebyS-deficepS-3 eveninA Class Rating with this Product(Classe normale du système contre l'incendie). Voir les instructions d'installation.
- See module literature for appropriate mating connectors. (Voir la documentation du module concernant les connecteurs appropriés)



UL US LISTED

www.trinasolar.com

Assembled in Thailand



011



840-00398-14
250VAC 20A
+79°C 2051



WWW.UNIRAC.COM



250120U

SFM TRIM SPICE DRK

Pack Size - 10

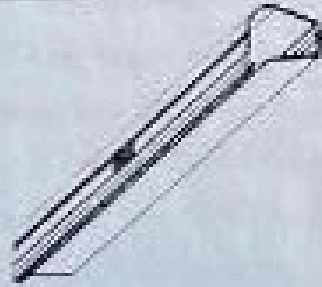
WGT/PCW 0043324-00

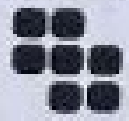
Manufacture Date: 01-02-2021

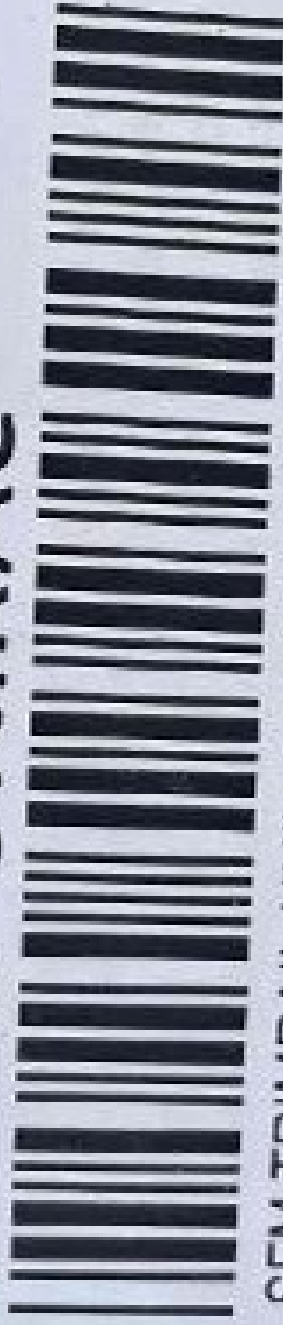
Factory Code: 010A



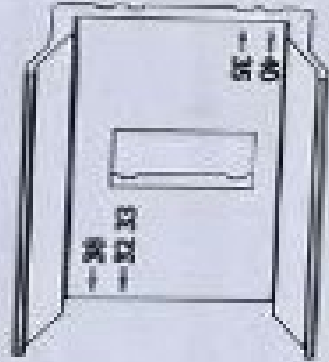
010A00104 250120U 10



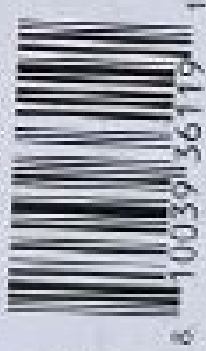
 **UNIRAC**[®]



SFM TRIMRAIL UNIV CLIP W/HDW 250110U



UPC Code



Pack Size: 10

Assembly Date:
10/10/20-11/10/20

California Proposition 65  WARNING: Cancer and
Reproductive Harm-- www.P65Warnings.ca.gov.



FLASHKIT SFM TRIM S 004201D



FLASHKIT SFM TRIM S COMP DARK
Pack Size - 10

WO/PCW 0042791-00

Manufacture date: 7/1/20-8/1/20



▲ DANGER/PELIGRO

WARNING OF ELECTRIC SHOCK - EXPLOSION / PELIGRO DE DESCARGA ELECTRICA - EXPLOSION

- Never plug anything into the power supply, unless the label clearly indicates that it is safe to do so.
- Never touch the power supply when it is plugged into the wall outlet.
- Never use the power supply in a wet area or in a place where there is a lot of moisture.
- Never use the power supply in a place where there is a lot of dust.
- Never use the power supply in a place where there is a lot of heat.
- Never use the power supply in a place where there is a lot of vibration.
- Never use the power supply in a place where there is a lot of noise.
- Never use the power supply in a place where there is a lot of smoke.
- Never use the power supply in a place where there is a lot of fire.
- Never use the power supply in a place where there is a lot of lightning.
- Never use the power supply in a place where there is a lot of thunder.
- Never use the power supply in a place where there is a lot of rain.
- Never use the power supply in a place where there is a lot of snow.
- Never use the power supply in a place where there is a lot of ice.
- Never use the power supply in a place where there is a lot of wind.
- Never use the power supply in a place where there is a lot of hail.
- Never use the power supply in a place where there is a lot of sleet.
- Never use the power supply in a place where there is a lot of fog.
- Never use the power supply in a place where there is a lot of mist.
- Never use the power supply in a place where there is a lot of dew.
- Never use the power supply in a place where there is a lot of frost.
- Never use the power supply in a place where there is a lot of snow.
- Never use the power supply in a place where there is a lot of ice.

- Nunca enchufar nada en la toma de corriente, a menos que la etiqueta indique claramente que es seguro hacerlo.
- Nunca tocar la toma de corriente cuando está enchufada en el tomacorriente de la pared.
- Nunca usar la toma de corriente en un área húmeda o en un lugar con mucha humedad.
- Nunca usar la toma de corriente en un lugar con mucho polvo.
- Nunca usar la toma de corriente en un lugar con mucho calor.
- Nunca usar la toma de corriente en un lugar con mucha vibración.
- Nunca usar la toma de corriente en un lugar con mucho ruido.
- Nunca usar la toma de corriente en un lugar con mucho humo.
- Nunca usar la toma de corriente en un lugar con mucho fuego.
- Nunca usar la toma de corriente en un lugar con mucho rayos.
- Nunca usar la toma de corriente en un lugar con mucho truenos.
- Nunca usar la toma de corriente en un lugar con mucha lluvia.
- Nunca usar la toma de corriente en un lugar con mucha nieve.
- Nunca usar la toma de corriente en un lugar con mucho hielo.
- Nunca usar la toma de corriente en un lugar con mucho viento.
- Nunca usar la toma de corriente en un lugar con mucha granizo.
- Nunca usar la toma de corriente en un lugar con mucha niebla.
- Nunca usar la toma de corriente en un lugar con mucho rocío.
- Nunca usar la toma de corriente en un lugar con mucho escarcha.
- Nunca usar la toma de corriente en un lugar con mucha nieve.
- Nunca usar la toma de corriente en un lugar con mucho hielo.

Model No. **D222NRB**



UL Recognized Component for use in Class II, Division 2, Groups A, B, C, D, and E, Hazardous (classified) Locations.

UL Recognized Component for use in Class II, Division 2, Groups A, B, C, D, and E, Hazardous (classified) Locations.

- Use only factory-installed components.
- Do not use components that are not listed on the label.
- Do not use components that are not approved by UL.

- Use only factory-installed components.
- Do not use components that are not listed on the label.
- Do not use components that are not approved by UL.

Logic suitable for 60°C or 75°C Class conductors.

Logic suitable for 60°C or 75°C Class conductors.

Logic suitable for 60°C or 75°C Class conductors.

Logic suitable for 60°C or 75°C Class conductors.

Logic suitable for 60°C or 75°C Class conductors.

Logic suitable for 60°C or 75°C Class conductors.

Logic suitable for 60°C or 75°C Class conductors.

Logic suitable for 60°C or 75°C Class conductors.

Logic suitable for 60°C or 75°C Class conductors.

Logic suitable for 60°C or 75°C Class conductors.

Logic suitable for 60°C or 75°C Class conductors.

Logic suitable for 60°C or 75°C Class conductors.

Logic suitable for 60°C or 75°C Class conductors.

Logic suitable for 60°C or 75°C Class conductors.

Model No.	D222NRB
Part No.	117ANCE
Manufacturer	SQUARE D
Country of Origin	Mexico
Year of Manufacture	1990
Lot No.	117ANCE
Quantity	1

Logic suitable for 60°C or 75°C Class conductors.

Logic suitable for 60°C or 75°C Class conductors.

Model No. **D222NRB**

Part No. **117ANCE**

SQUARE D

Made in Mexico

Model No. **D222NRB**

Part No. **117ANCE**

SQUARE D

Made in Mexico

Logic suitable for 60°C or 75°C Class conductors.

Logic suitable for 60°C or 75°C Class conductors.



FLASHKIT SFM SLIDER S

004271D



FLASHKIT SFM SLIDER S COMP DRK
DARK Pack Size : 10
Factory Code: 5-1

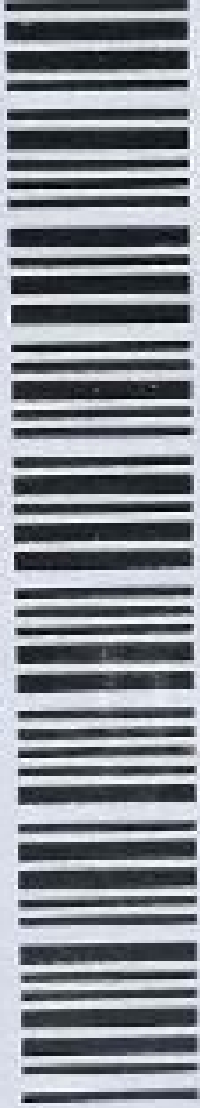


W0.P0E10437E6-00 Manufacture date: 1/2021-2/2021

010059186213115

 **UNIRAC**SM

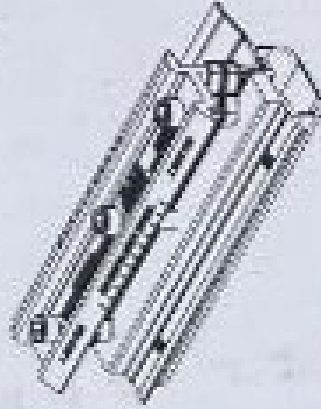
BETTER SOLAR STARTS HERE



SFM SPLICE 6.5"

250010U

Pack Size: 10



UPC Code



6 100391361161 0

Assembly Date:
11/20/20-12/20/20

PO#0043497-00

California Proposition 85  WARNING: Cancer and
Reproductive Harm--www.P85Warnings.ca.gov

 **UNIRAC®**

ENTER SERIALS STARTS HERE

www.unirac.com



008114M



MLPE MOUNT ASSY

Part # 326-110

WQIP# 0043821-02

Manufacture date: 03/2021

Factory Code: 0254



8 100393 610540

ENPHASE®

Model number: X-IQ-AM1-240-3-ES



Part number: 883-00820-11



Qty: 1

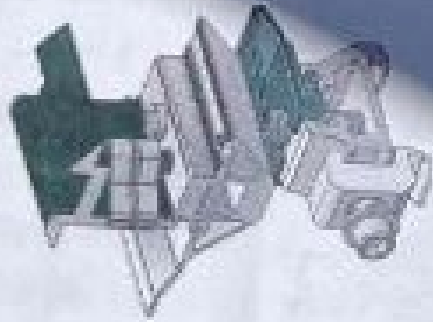


Serial number: 202117056633



Carton number: ENP 202118002026





 **UNIRAC**[®]

BETTER SOLAR STARTS HERE

www.unirac.com



2 5 0 0 2 0 U

SFM MICRORAIL 2[®]

Pack Size: 10

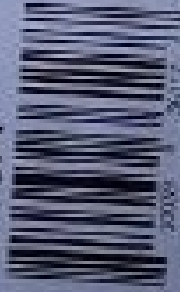
WO/PO#

0041539-00

Manufacture date:

JAN 2021

Factory Code : 010A



20208 36117