





WARNING
POWER SOURCE OUTPUT CONNECTION.
DO NOT RELOCATE THIS OVERCURRENT DEVICE.

WARNING
ADVERTENCIA
AVERTISSEMENT
DANGER
PELIGRO

30	Solar	29
30	Solar	
30	Solar	
26	UPstairs Heat	25
24	Great Room	Master Bed to Bath
18	Bed 1 to Bonus	Bed 2 to Bonus
16	Garage Deck	Dishwasher
14	Kitchen Light	Aircon w/ice
13	Hot Tap	Outside GFI's
12	Pool GFI's	Washer
11	Draps	Kitchen GFI
10	W/Hair	Kitchen GFI
9	W/Hair	Outside Panel
8	Range	Dishwasher Heat

WARNING
ADVERTENCIA
AVERTISSEMENT
DANGER
PELIGRO

NEVER OPEN THIS COVER WITHOUT FIRST TURNING OFF THE MAIN POWER TO THE PANEL. TO TURN OFF THE MAIN POWER, TURN THE MAIN POWER SWITCH TO THE OFF POSITION. NEVER WORK ON THIS PANEL WITH THE MAIN POWER ON. ALWAYS USE PROPER SAFETY PROCEDURES WHEN WORKING ON ELECTRICAL SYSTEMS. ALWAYS USE THE CORRECT TOOLS AND EQUIPMENT. ALWAYS WEAR PROPER PROTECTIVE EQUIPMENT. ALWAYS FOLLOW THE NATIONAL ELECTRICAL CODE (NEC) AND ALL APPLICABLE REGULATIONS. ALWAYS LABEL ALL CIRCUITS AND DEVICES. ALWAYS USE THE CORRECT WIRING METHODS. ALWAYS USE THE CORRECT WIRE SIZES. ALWAYS USE THE CORRECT TERMINAL BLOCKS. ALWAYS USE THE CORRECT CONDUIT. ALWAYS USE THE CORRECT GROUNDING METHODS. ALWAYS USE THE CORRECT GROUNDING RODS. ALWAYS USE THE CORRECT GROUNDING BARS. ALWAYS USE THE CORRECT GROUNDING CLIPS. ALWAYS USE THE CORRECT GROUNDING BOLTS. ALWAYS USE THE CORRECT GROUNDING NUTS. ALWAYS USE THE CORRECT GROUNDING WASHERS. ALWAYS USE THE CORRECT GROUNDING PLATES. ALWAYS USE THE CORRECT GROUNDING STRIPS. ALWAYS USE THE CORRECT GROUNDING RINGS. ALWAYS USE THE CORRECT GROUNDING CLIPS. ALWAYS USE THE CORRECT GROUNDING BOLTS. ALWAYS USE THE CORRECT GROUNDING NUTS. ALWAYS USE THE CORRECT GROUNDING WASHERS. ALWAYS USE THE CORRECT GROUNDING PLATES. ALWAYS USE THE CORRECT GROUNDING STRIPS. ALWAYS USE THE CORRECT GROUNDING RINGS.

29 28 27 26 25 24 23 22 21 20 19 18 17 16 15 14 13 12 11 10 9 8 7 6 5 4



WARNING

















⚠ CAUTION SOLAR CIRCUIT





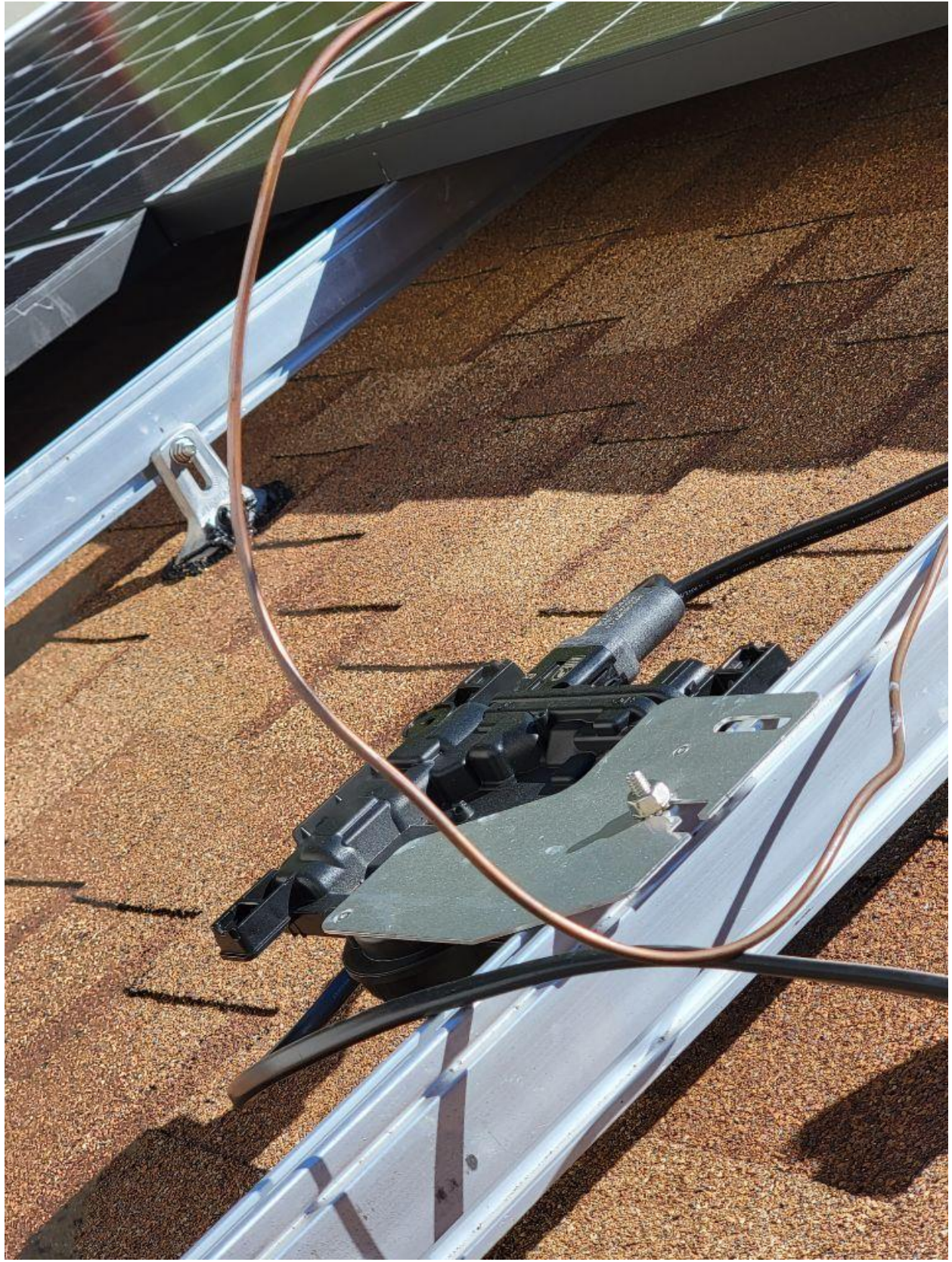


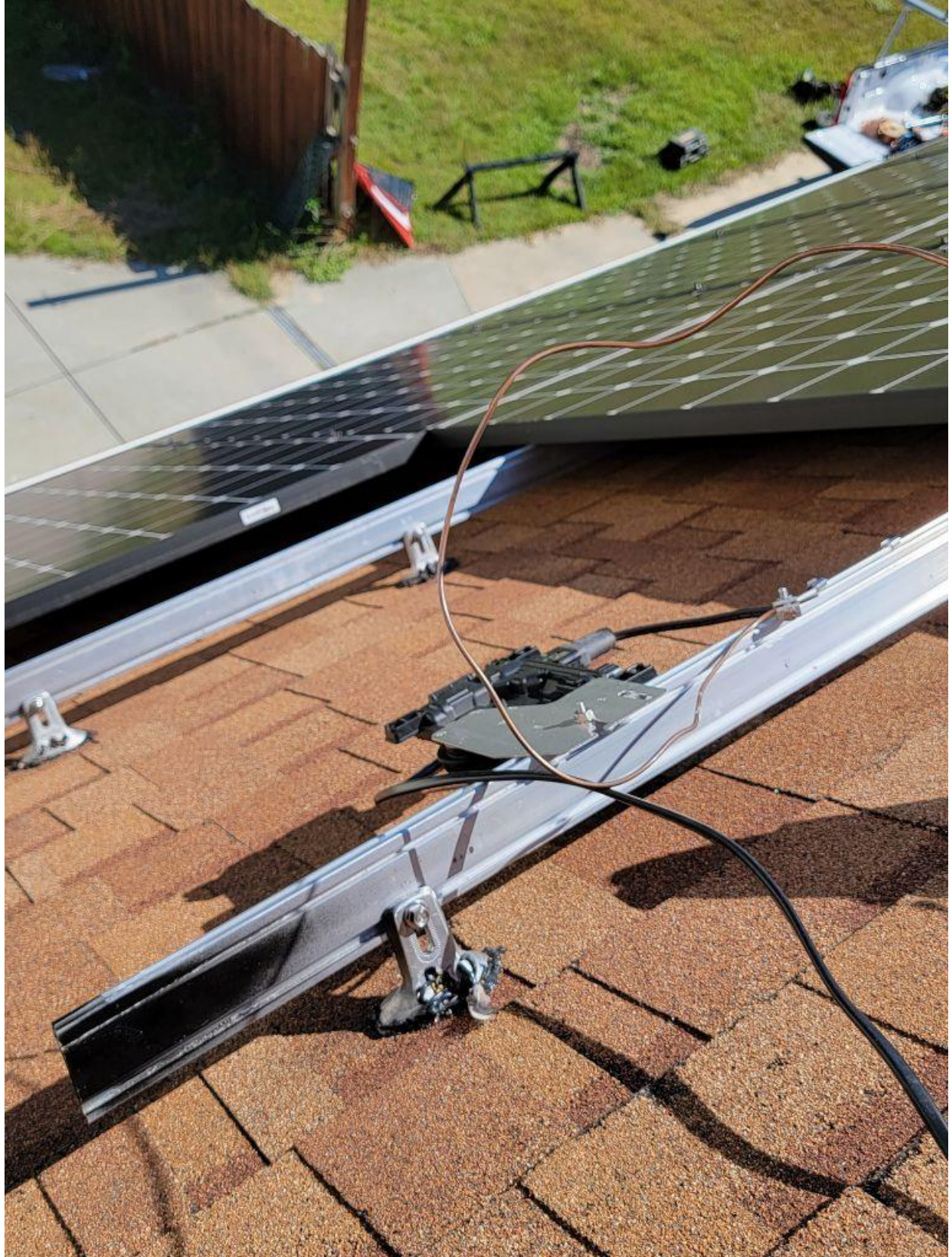












HAZARD OF ELECTRICAL SHOCK ON BURN
SERVICED BY UTILITY PERSONNEL ONLY
DO NOT ATTEMPT TO REPAIR THIS METER
0000-0000

WARNING
THIS SERVICE METER IS ALSO SERVED BY A PHOTOVOLTAIC SYSTEM

CONTAINS FCC ID: R079918M8
Landis+Gyr **GRIDSTREAM RF**
909C9AEF
DIGITAL
CONTAINS IC SYMBOL: R079918M8

00000000

Type **FOCUS AXRe-SD**
FORM 2S CL200 240V 3W 60Hz TA=30 Kh 7.2

CENTRAL EMC

160 188 980
934 0820
Landis+Gyr

MIL BANK
LANDIS+GYR



6:22



Done

Last Report: 9/24/2021, 6:18 PM

202122102960 (IQ-Series Microinverter)

Last Report: 9/24/2021, 6:18 PM

202123004502 (IQ-Series Microinverter)

Last Report: 9/24/2021, 6:18 PM

202123022702 (IQ-Series Microinverter)

Last Report: 9/24/2021, 6:18 PM

IEEE 1547 default 2015 Settings for IQ-Series Microinverters:

Frequency limits

Over frequency limit: 60.5 Hz

Over frequency trip time: 160 ms

Under frequency limit: 59.3 Hz

Under frequency trip time: 160 ms

Reconnect

Anti-islanding reconnect time (long): 305 s

Voltage limits

Over voltage limit: 144.0 V

Over voltage limit (slow): 132.0 V

Over voltage trip time: 160 ms

Over voltage trip time (slow): 1,000 ms

Under voltage limit: 60.0 V

Under voltage limit (slow): 105.6 V

Under voltage trip time: 160 ms

Under voltage trip time (slow): 2,000 ms



6:22



Done

Envoy Communications Gateway Report

9/24/2021 6:22 PM

Envoy

Serial Number: 122115054419

Software Version: R4.10.35 (6ed292)

Connection to Enlighten: None

Type: IQ Envoy

Production Meter

2 Wh Lifetime Energy

Status: Normal

Consumption Meter

13 Wh Lifetime Energy

Status: Normal

Microinverters: 21

Grid Profile IEEE 1547 default 2015 applied to 11 IQ-Series Microinverters:

202122075701

Last Report: 9/24/2021, 6:18 PM - 0 W

202122084986

Last Report: 9/24/2021, 6:19 PM - 0 W

202122091918

Last Report: 9/24/2021, 6:18 PM - 0 W

202122098747

Last Report: 9/24/2021, 6:18 PM - 0 W





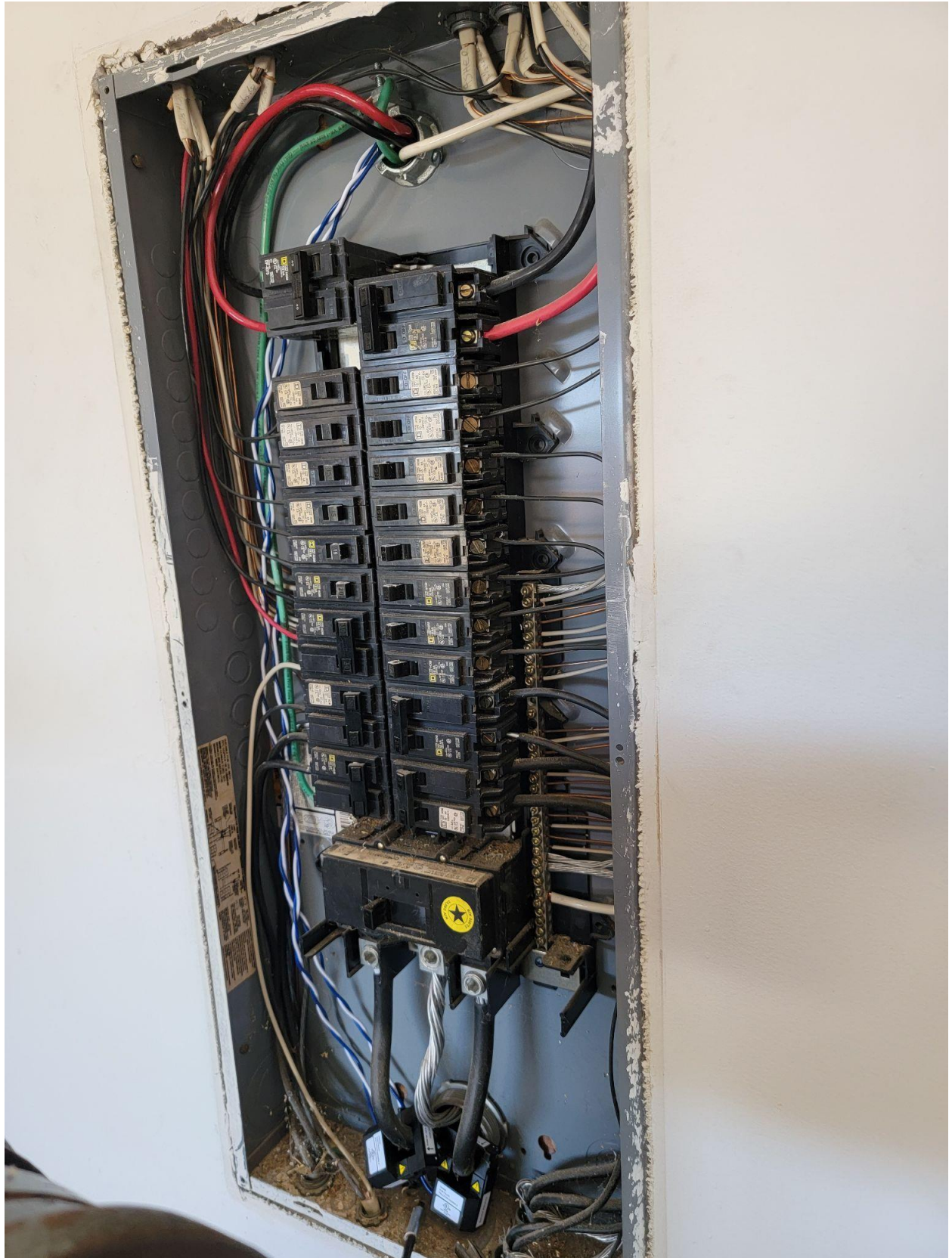


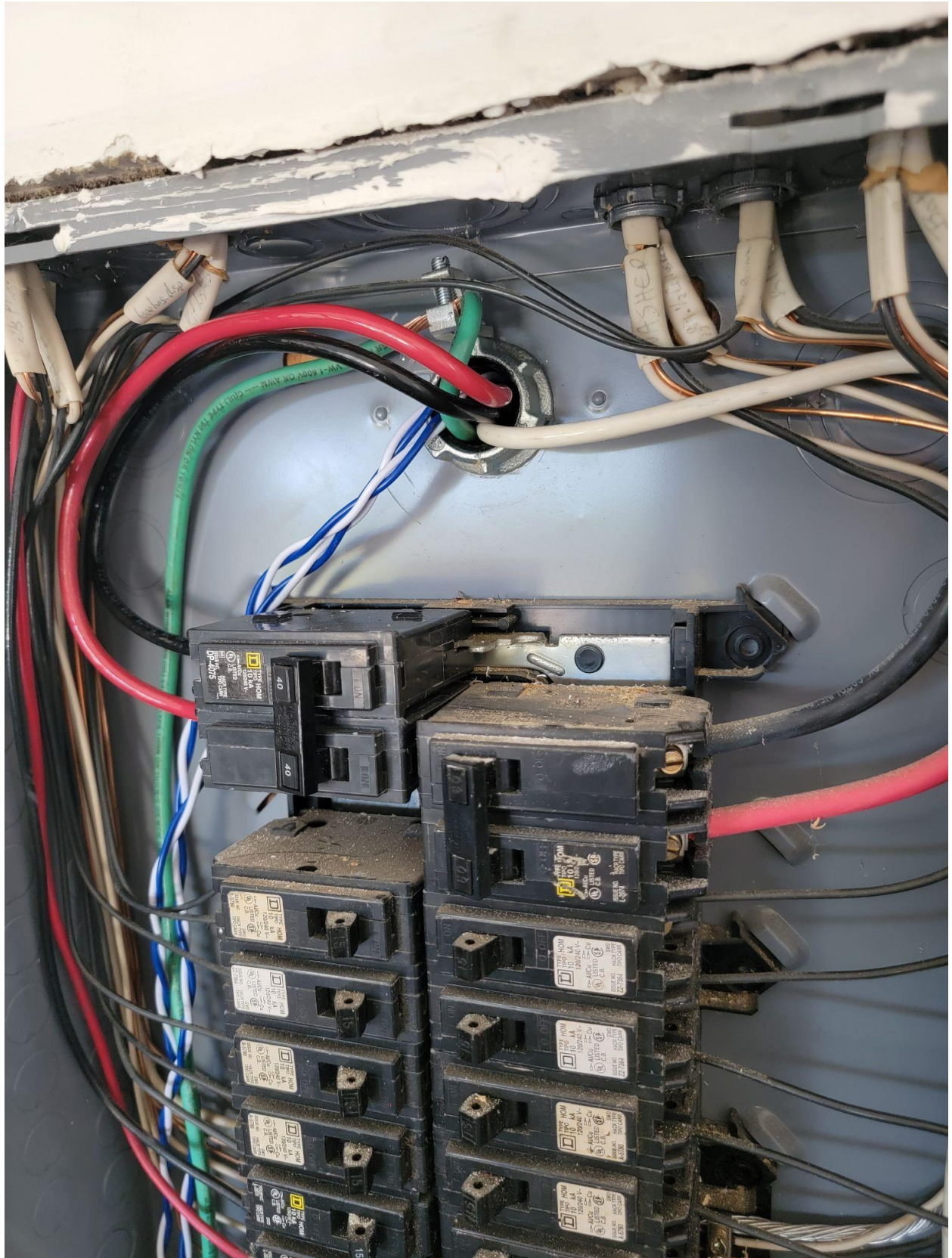
051

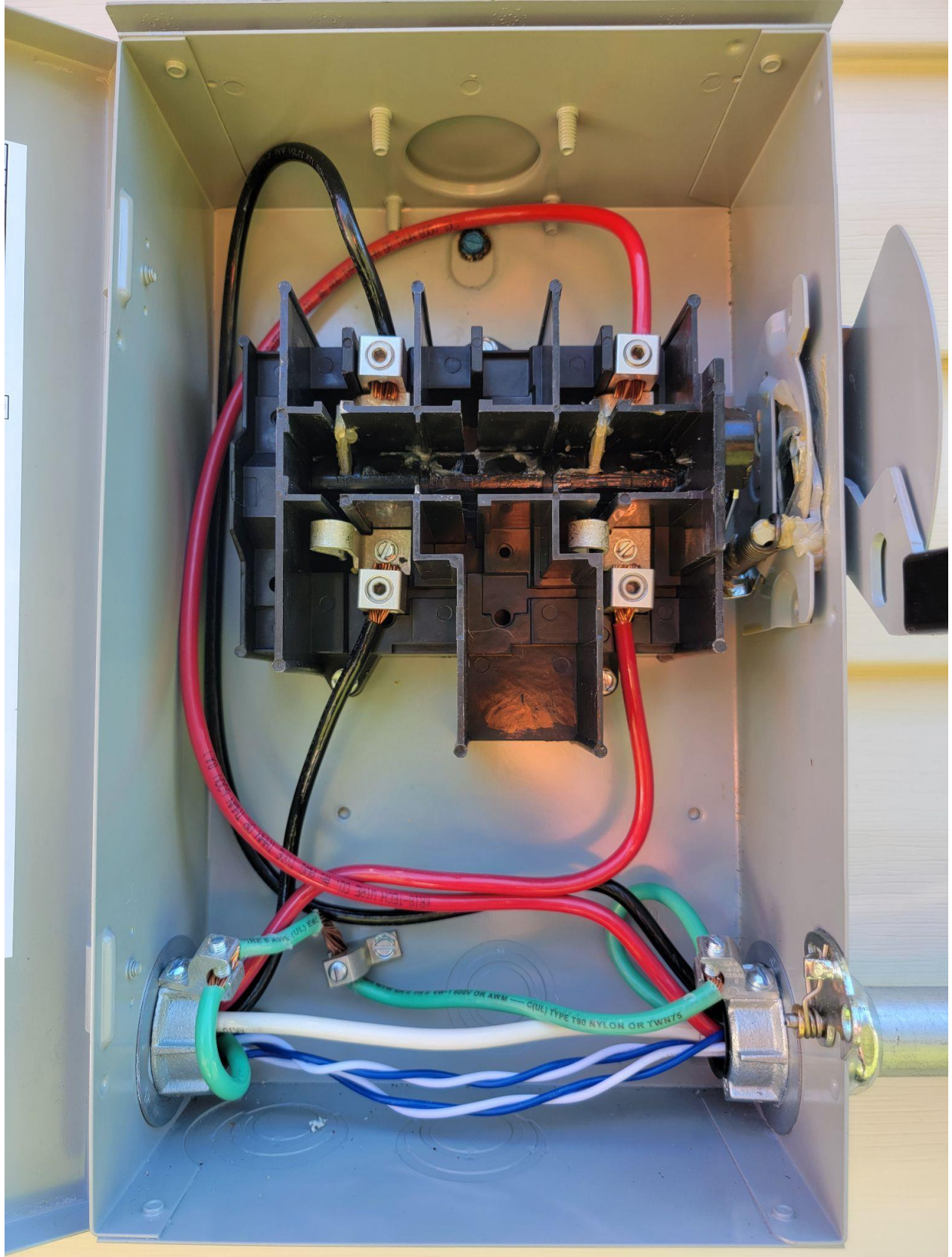
PV Positive

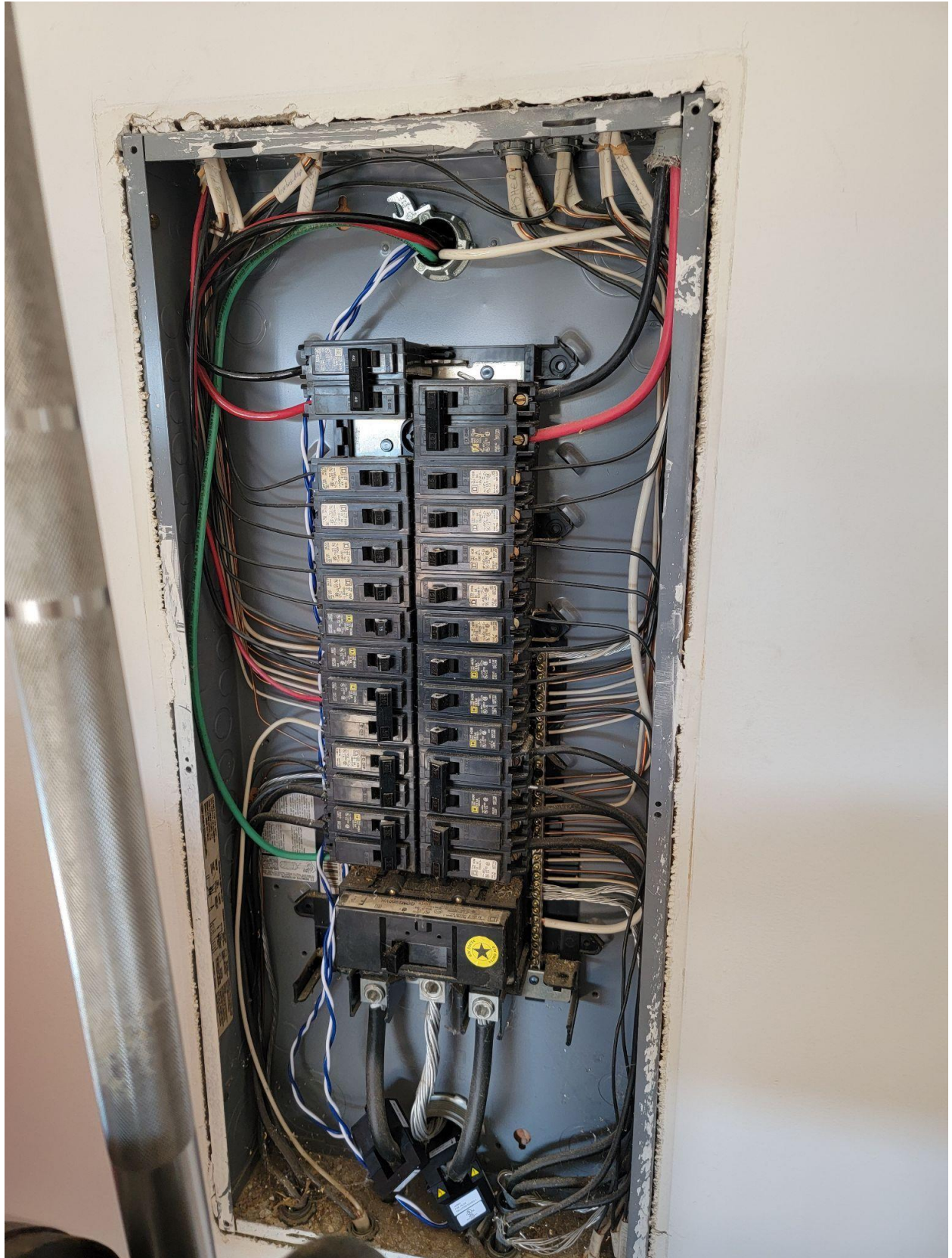
PV Negative/Neutral

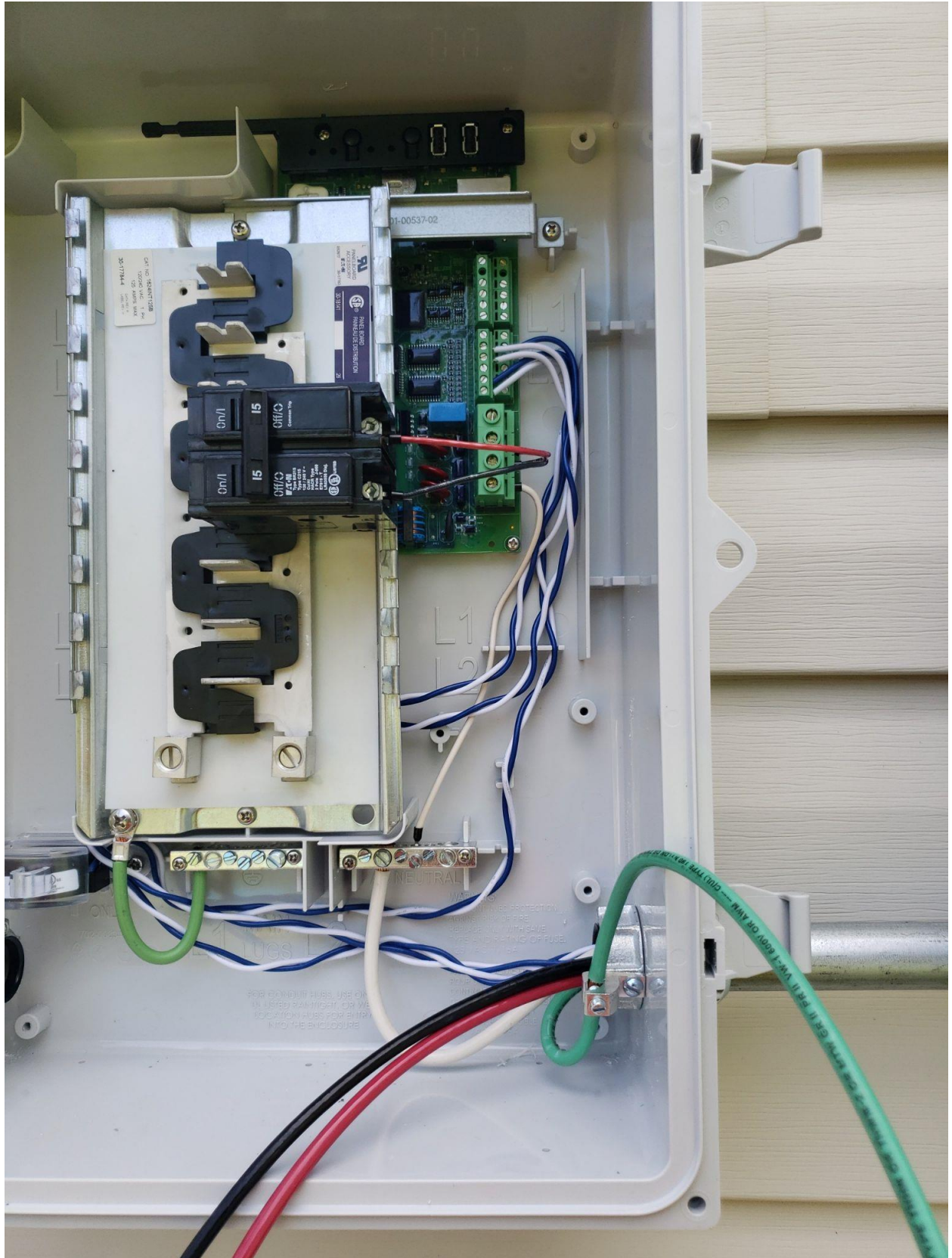
For terminal tongue lengths see Table on page 5 of instruction manual

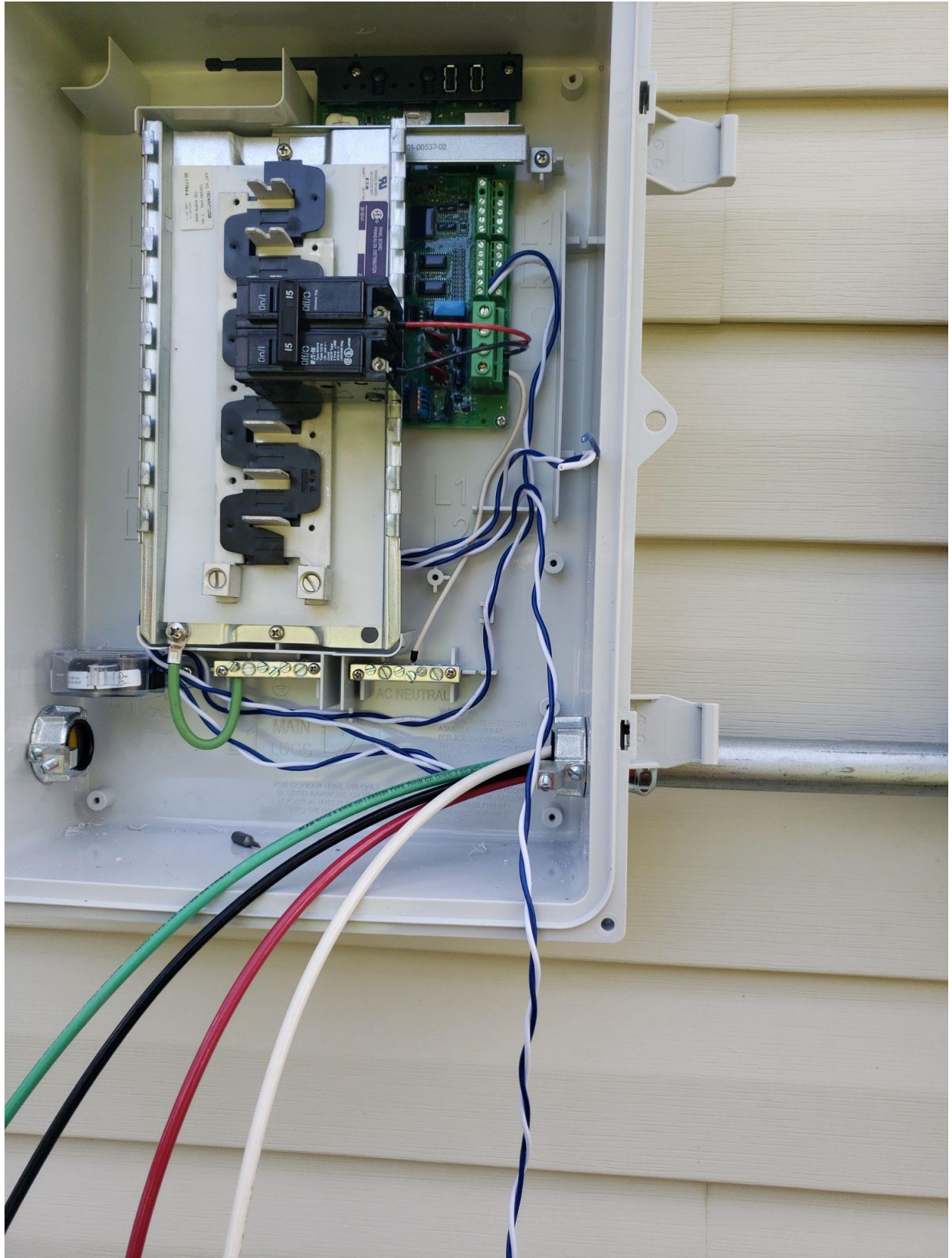


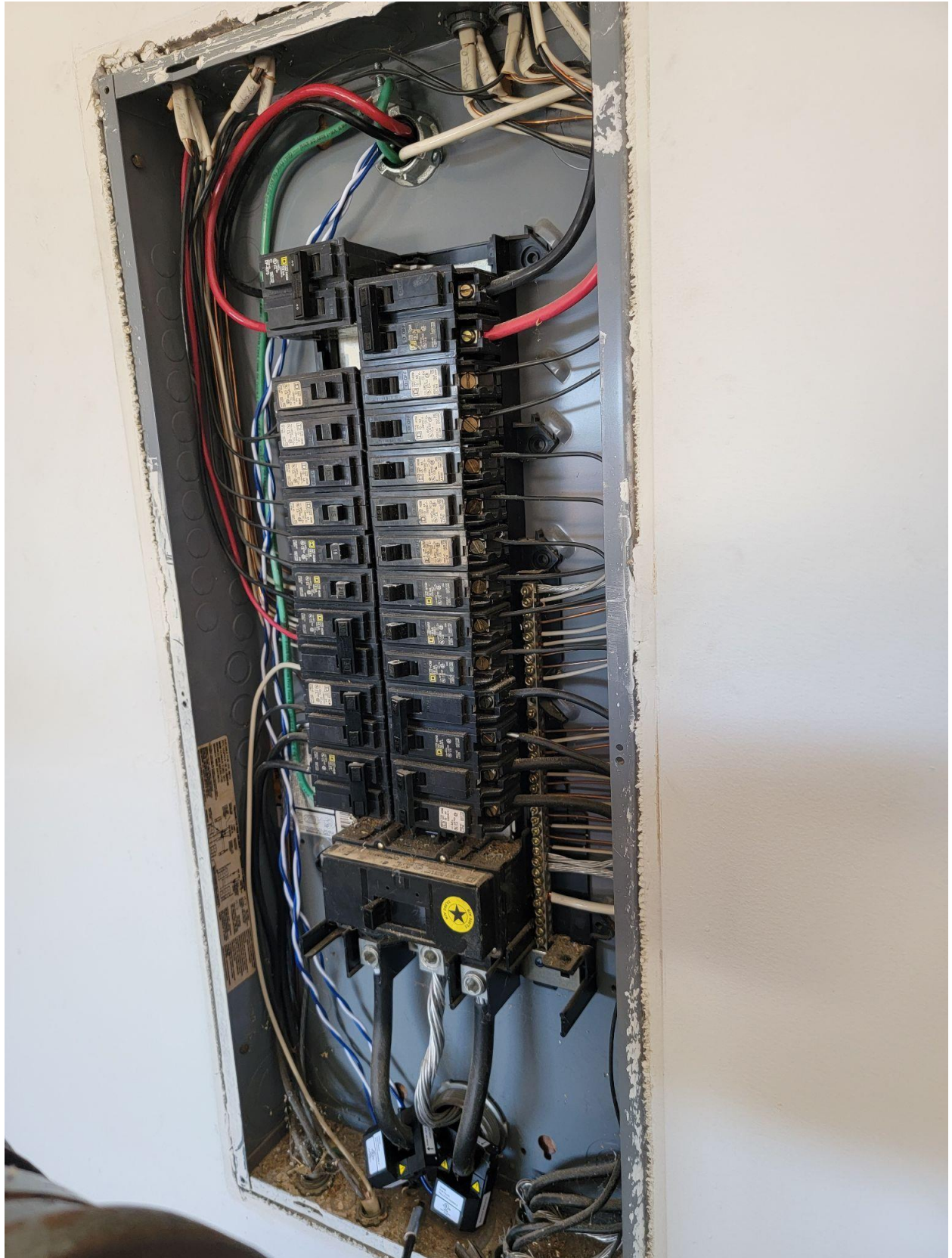


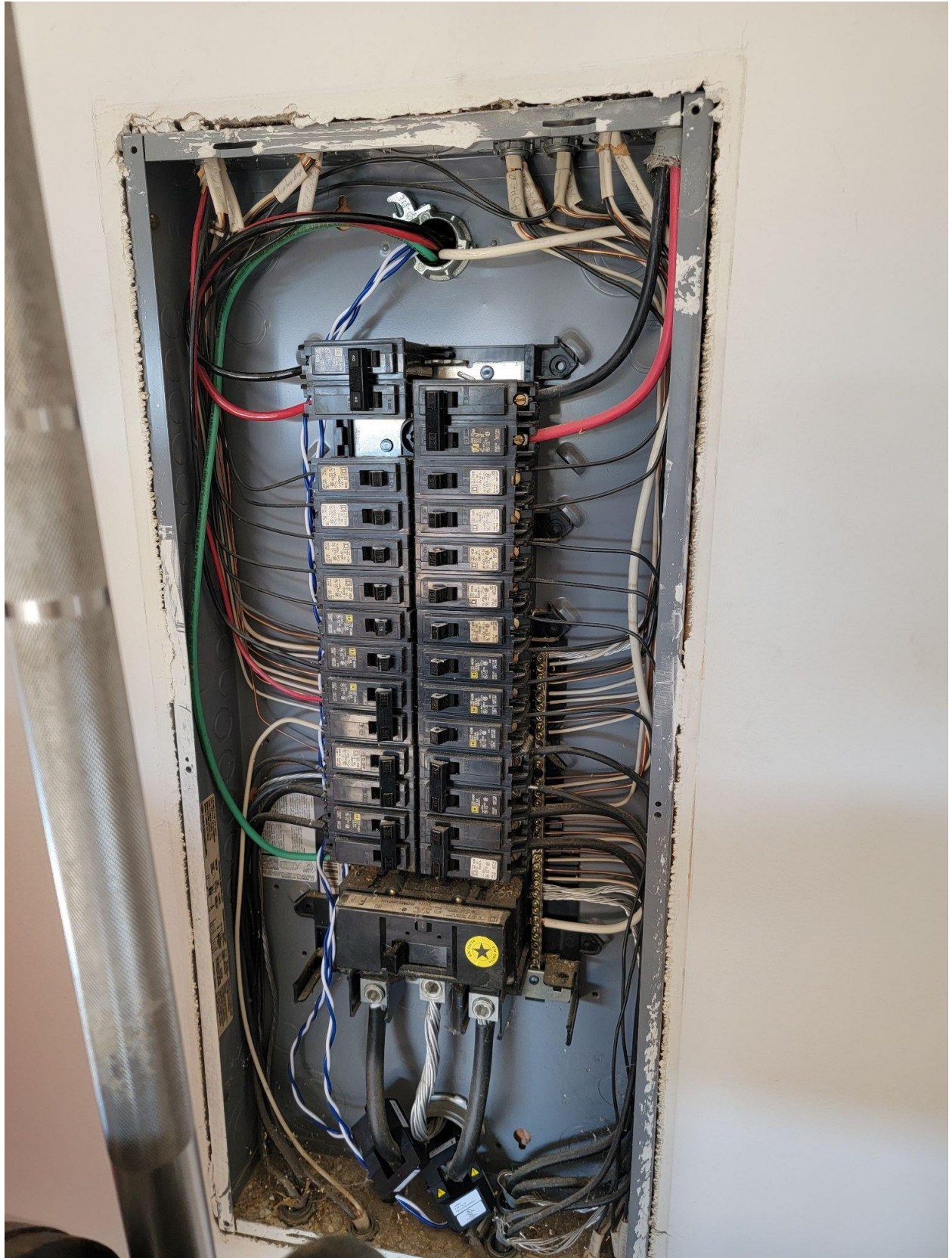


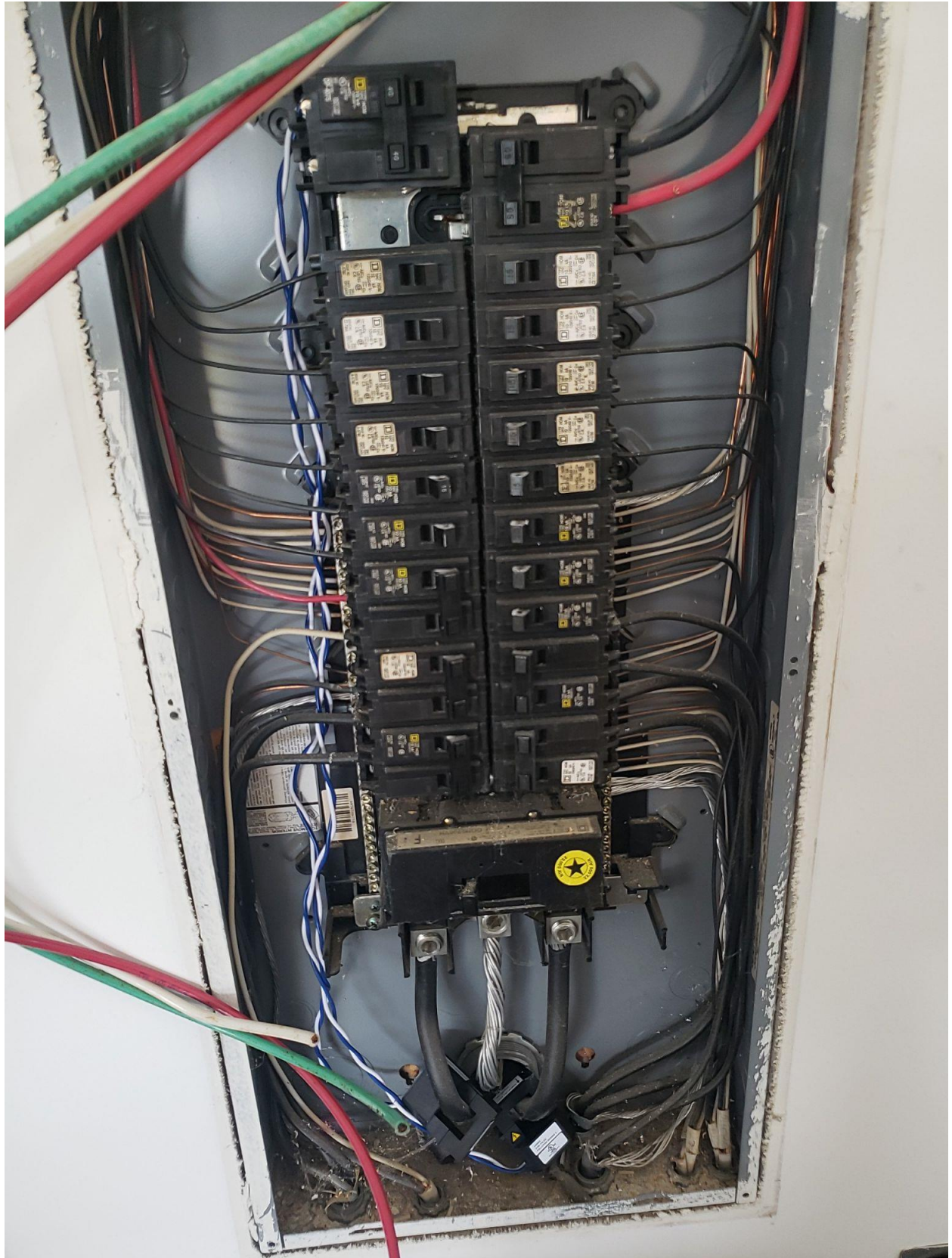




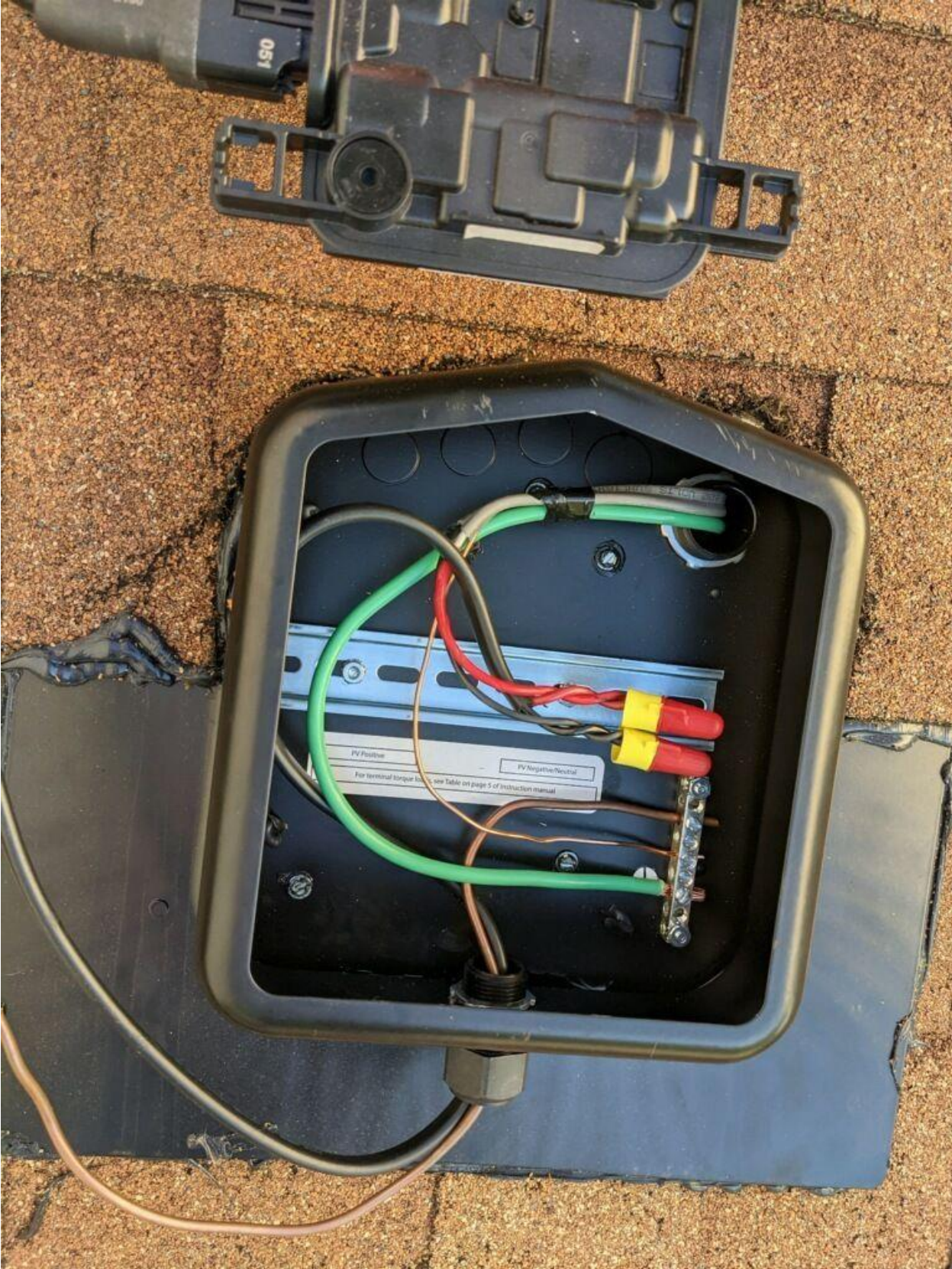












051

PV Positive

PV Negative/Neutral

For terminal torque levels, see Table on page 5 of instruction manual



ENPHASE

WARNING
DANGER OF ELECTRIC SHOCK
OR BURNING
DO NOT TOUCH THE SURFACE OF THE INVERTER
OR THE WIRING
IF YOU ARE NOT A QUALIFIED ELECTRICIAN
OR A QUALIFIED SOLAR INSTALLER
DO NOT ATTEMPT TO REPAIR OR MAINTAIN
THIS EQUIPMENT
SEE THE USER MANUAL FOR MORE INFORMATION
ENPHASE.COM

CAUTION SOLAR ENERGY

WARNING PHOTOVOLTAIC POWER SOURCE



















⚠ CAUTION SOLAR CIRCUIT

