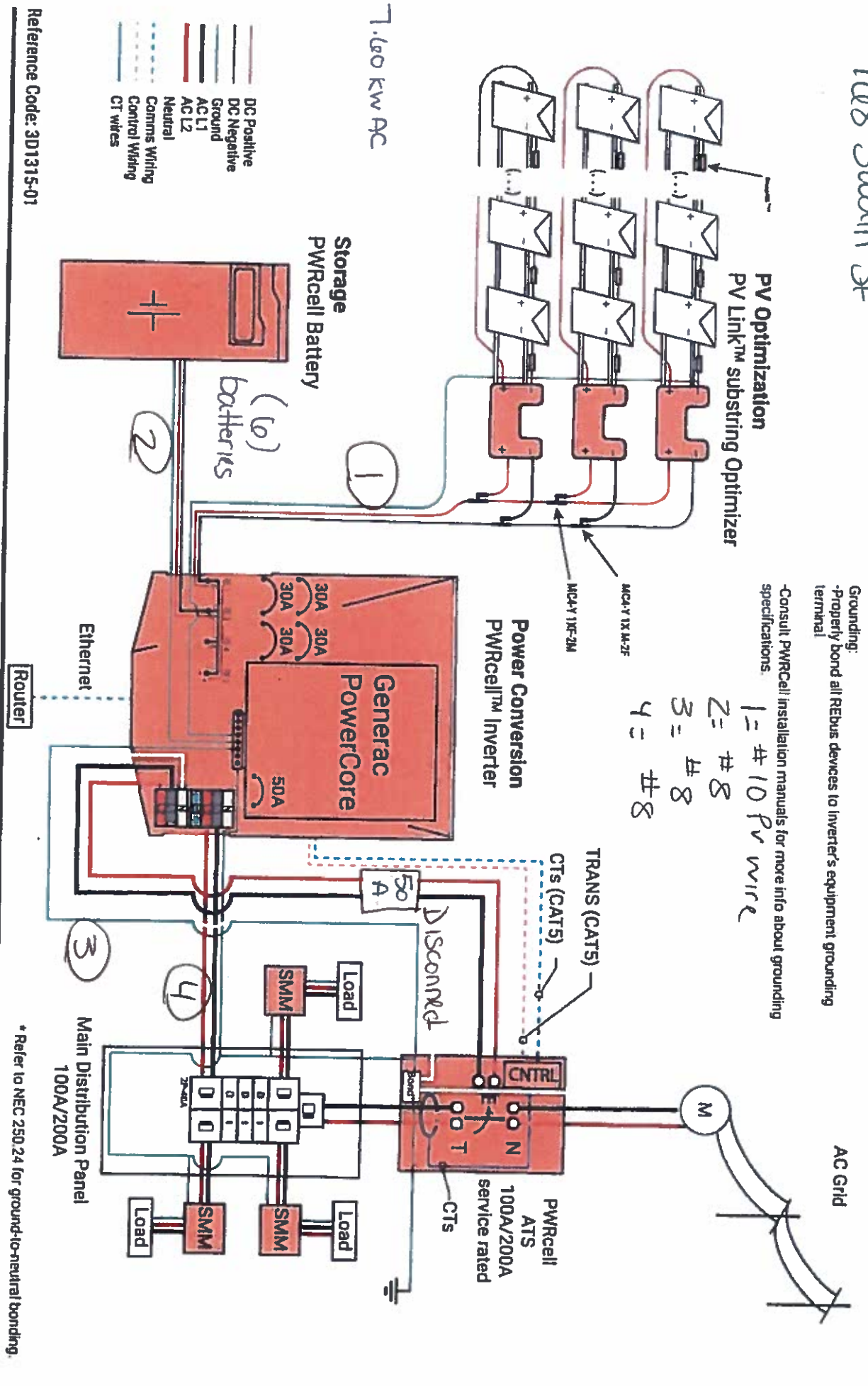
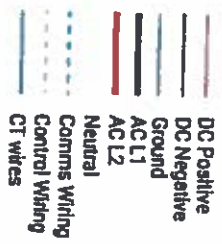


Dunlap
168 Swan St

7.60 KW AC



Grounding:
- Properly bond all REBUS devices to Inverter's equipment grounding terminal
- Consult PWRcell installation manuals for more info about grounding specifications.

1 = #10 PV wire
2 = #8
3 = #8
4 = #8

Reference Code: 3D1315-01

This design shows Generac PWRcell Whole-Home-Backup configuration. This configuration provides load shedding capability to provide power to essential circuits. The inverter backup output supports a loads panel using Generac SMM devices for load management for larger 240V loads. This configuration is acceptable with most 100A and 200A residential services.

Whole-Home-Backup (X7602)

- 1 PWRcell Inverter (X7602)
- N SnapRS™
- PV Links
- 1 PWRcell Batteries
- 1 CT Kit (Incl.)
- N PV Modules
- 1 PWRcell ATS
- SMMs

* Refer to NEC 250.24 for ground-to-neutral bonding.

