

DESCRIPTION:

SNAPNRACK, MLPE FRAME ATTACHMENT KIT

DRAWN BY:

mwatkins

REVISION:

A

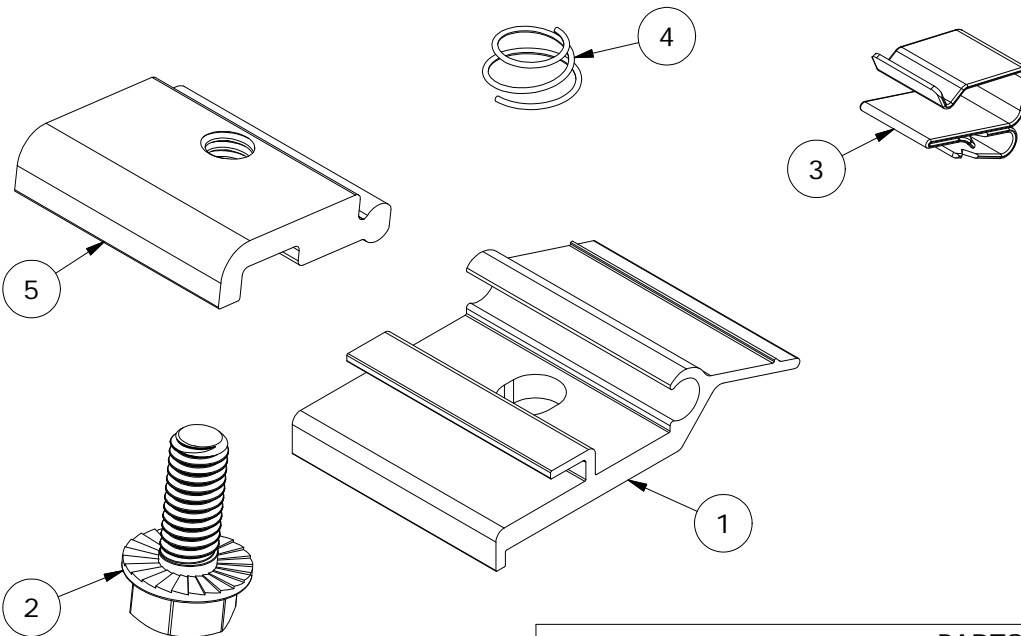
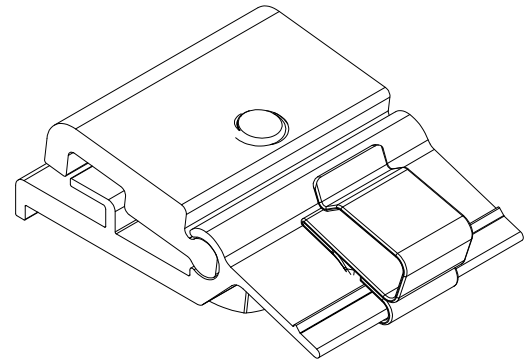
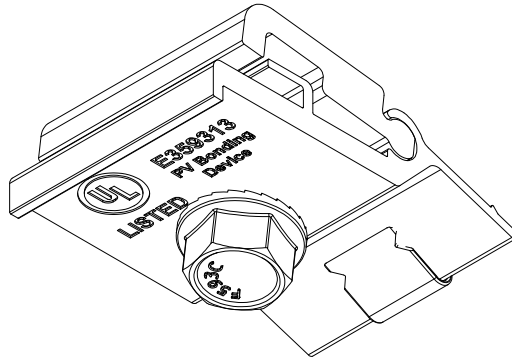


PART NUMBER(S):

242-02151

595 MARKET STREET, 29TH FLOOR • SAN FRANCISCO, CA 94105 USA
PHONE (415) 580-6900 • FAX (415) 580-6902

THE INFORMATION IN THIS DRAWING IS CONFIDENTIAL AND PROPRIETARY. ANY REPRODUCTION, DISCLOSURE, OR USE THEREOF IS PROHIBITED WITHOUT THE WRITTEN CONSENT OF SUNRUN SOUTH LLC.



PARTS LIST		
ITEM	QTY	DESCRIPTION
1	1	SNAPNRACK, MLPE FRAME ATTACHMENT BOTTOM PRC
2	1	BOLT, FLANGE, 5/16IN-18 X 3/4IN, CLEAR, SS
3	1	SNAPNRACK, SMART CLIP II
4	1	SNAPNRACK, COIL SPRING FOR MLPE FRAME ATTACHMENT
5	1	SNAPNRACK, MLPE FRAME ATTACHMENT TOP PRC

MATERIALS:

6000 SERIES ALUMINUM, STAINLESS STEEL

OPTIONS:

DESIGN LOAD (LBS):

N/A

ULTIMATE LOAD (LBS):

N/A

TORQUE SPECIFICATION:

10 LB-FT

CERTIFICATION:

UL 2703, FILE E359313

WEIGHT (LBS):

0.13

DESCRIPTION:
SNAPNRACK, MLPE FRAME ATTACHMENT KIT

PART NUMBER(S):
242-02151

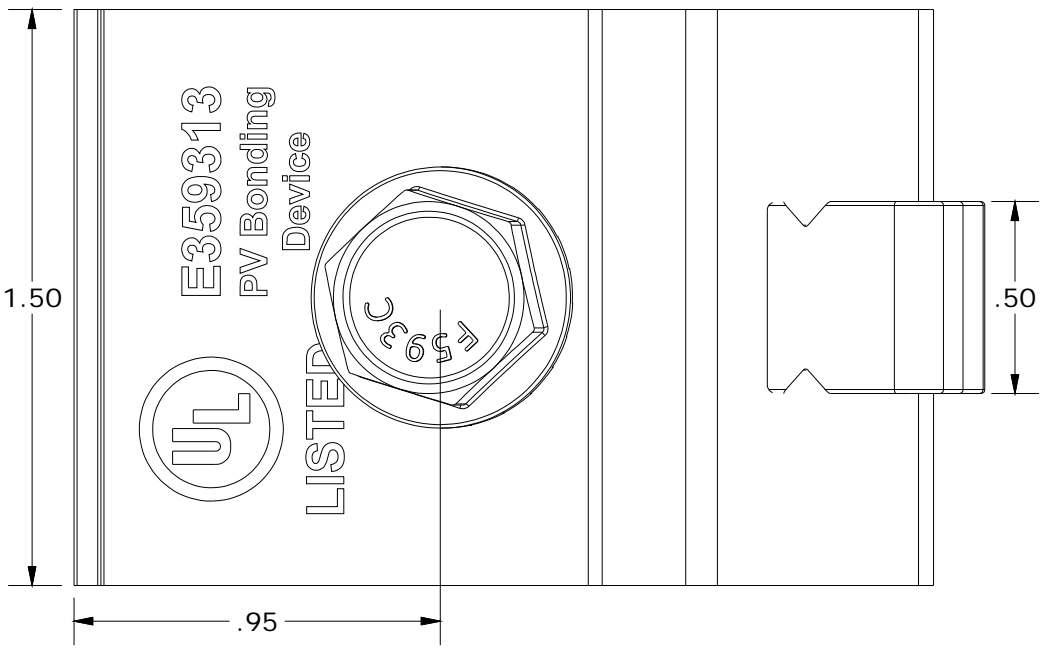
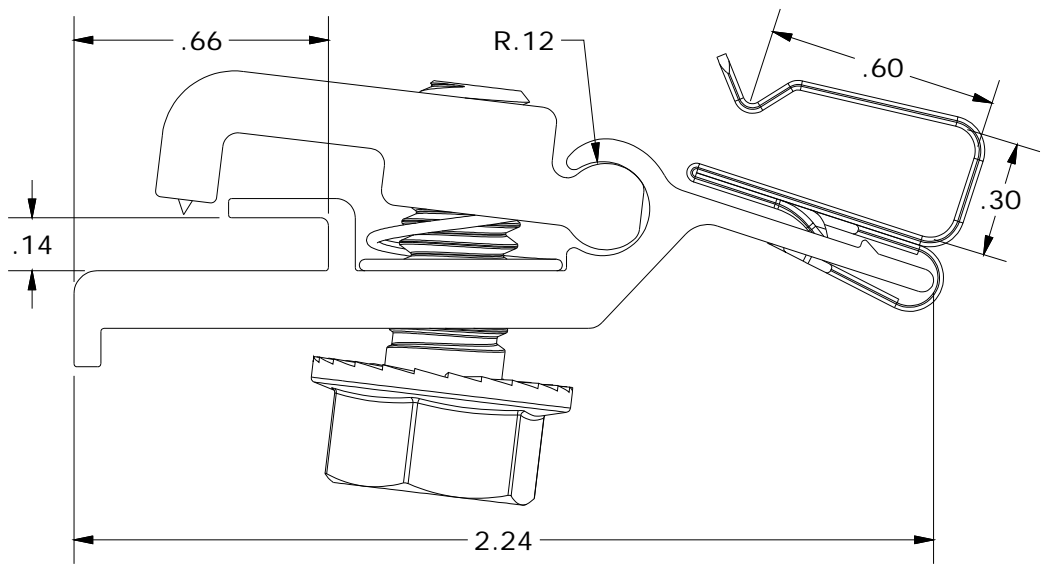
DRAWN BY:
 mwatkins

REVISION:
A

SnapNrack™
 Solar Mounting Solutions

595 MARKET STREET, 29TH FLOOR • SAN FRANCISCO, CA 94105 USA
 PHONE (415) 580-6900 • FAX (415) 580-6902

THE INFORMATION IN THIS DRAWING IS CONFIDENTIAL AND PROPRIETARY. ANY REPRODUCTION, DISCLOSURE, OR USE THEREOF IS PROHIBITED WITHOUT THE WRITTEN CONSENT OF SUNRUN SOUTH LLC.



ALL DIMENSIONS IN INCHES

DESCRIPTION:
SNAPNRACK, RL UNIVERSAL, ARRAY SKIRT

DRAWN BY:
 mwatkins

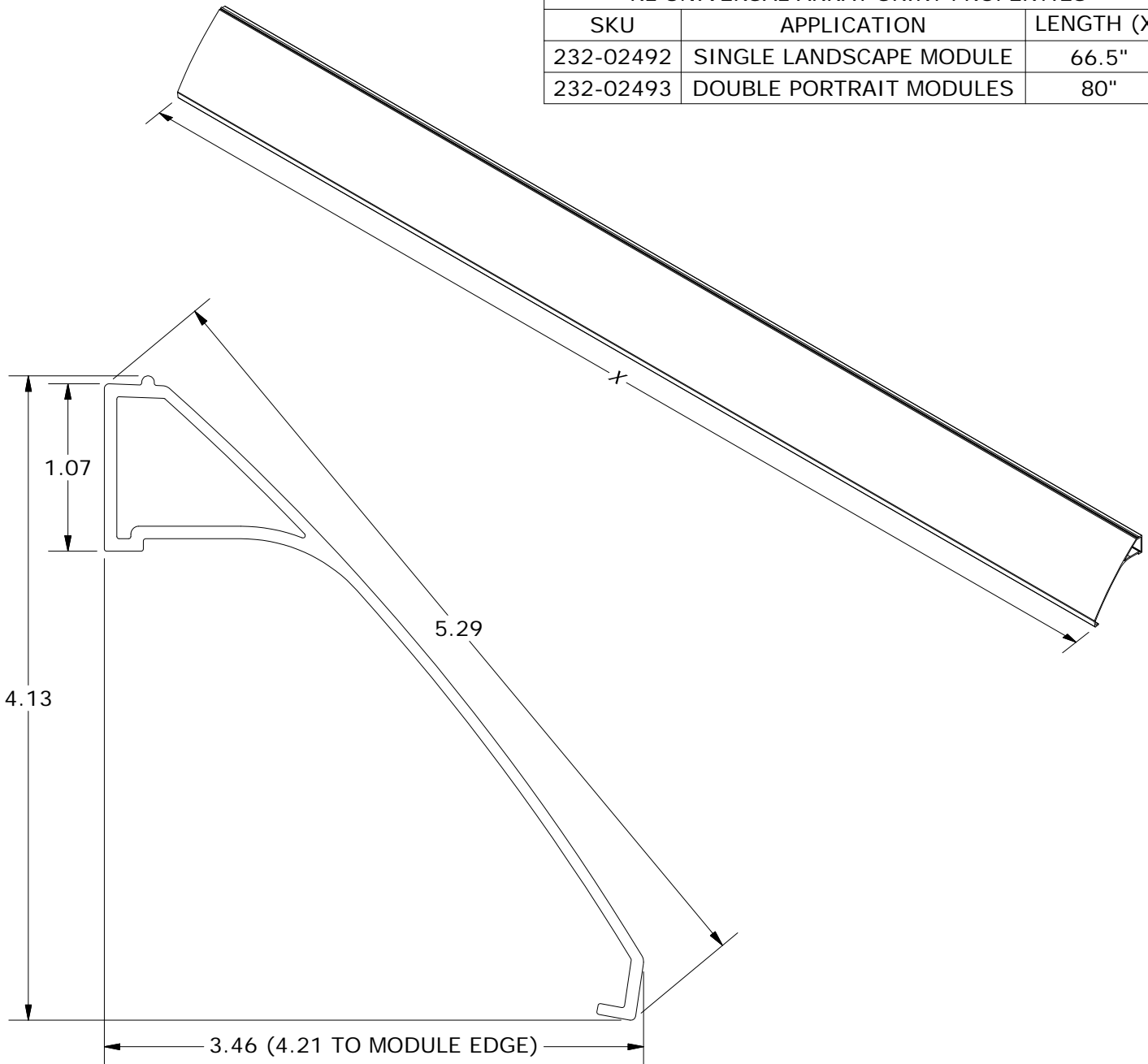


PART NUMBER(S):
232-02492, 232-02493

REVISION:
A

595 MARKET STREET, 29TH FLOOR • SAN FRANCISCO, CA 94105 USA
 PHONE (415) 580-6900 • FAX (415) 580-6902
 THE INFORMATION IN THIS DRAWING IS CONFIDENTIAL AND PROPRIETARY. ANY REPRODUCTION, DISCLOSURE, OR USE THEREOF IS PROHIBITED WITHOUT THE WRITTEN CONSENT OF SUNRUN SOUTH LLC.

RL UNIVERSAL ARRAY SKIRT PROPERTIES		
SKU	APPLICATION	LENGTH (X)
232-02492	SINGLE LANDSCAPE MODULE	66.5"
232-02493	DOUBLE PORTRAIT MODULES	80"



ALL DIMENSIONS IN INCHES

MATERIALS:	6000 SERIES ALUMINUM	OPTIONS:
DESIGN LOAD (LBS):	N/A	BLACK ANODIZED
ULTIMATE LOAD (LBS):	N/A	
TORQUE SPECIFICATION:	N/A LB-FT	
CERTIFICATION:	UL 2703, FILE E359313	
WEIGHT (LBS):	3.94 - 4.74	

DESCRIPTION:
SNAPNRACK, RL UNIVERSAL, LINK

PART NUMBER(S):
242-02156

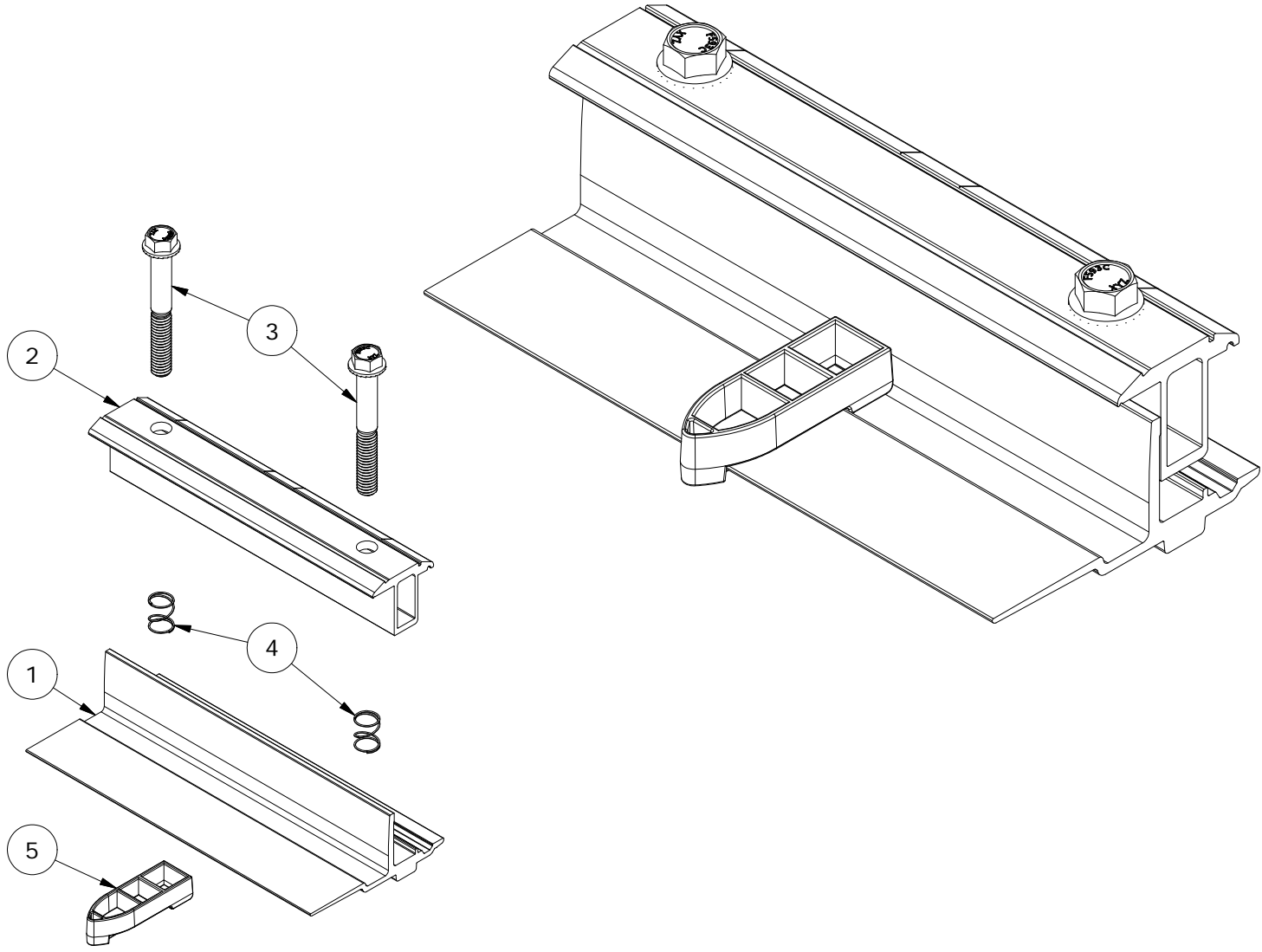
DRAWN BY:
 mwatkins

REVISION:
A

SnapNrack™
 Solar Mounting Solutions

595 MARKET STREET, 29TH FLOOR • SAN FRANCISCO, CA 94105 USA
 PHONE (415) 580-6900 • FAX (415) 580-6902

THE INFORMATION IN THIS DRAWING IS CONFIDENTIAL AND PROPRIETARY. ANY REPRODUCTION, DISCLOSURE, OR USE THEREOF IS PROHIBITED WITHOUT THE WRITTEN CONSENT OF SUNRUN SOUTH LLC.



PARTS LIST

ITEM	QTY	DESCRIPTION
1	1	SNAPNRACK, RL UNIVERSAL, LINK BOTTOM, MILL
2	1	SNAPNRACK, RL UNIVERSAL, LINK TOP, BONDING, BLACK
3	2	BOLT, FLANGE, SERRATED, 3/8IN-16 X 2-3/4IN, 1/2IN TRIM HEAD, 1.2IN THREAD, BLACK, SS
4	2	SNAPNRACK, RL UNIVERSAL, MOUNT SPRING, SS
5	1	SNAPNRACK, RL UNIVERSAL, LINK COLUMN SPACER

MATERIALS:	6000 SERIES ALUMINUM, STAINLESS STEEL, POLYCARBONATE	OPTIONS:
DESIGN LOAD (LBS):	N/A	
ULTIMATE LOAD (LBS):	N/A	
TORQUE SPECIFICATION:	12 LB-FT	
CERTIFICATION:	UL 2703, FILE E359313	
WEIGHT (LBS):	1.03	

DESCRIPTION:

SNAPNRACK, RL UNIVERSAL, LINK

DRAWN BY:

mwatkins

REVISION:

A

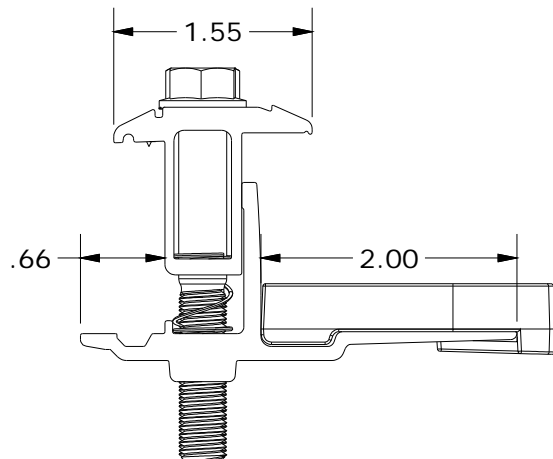
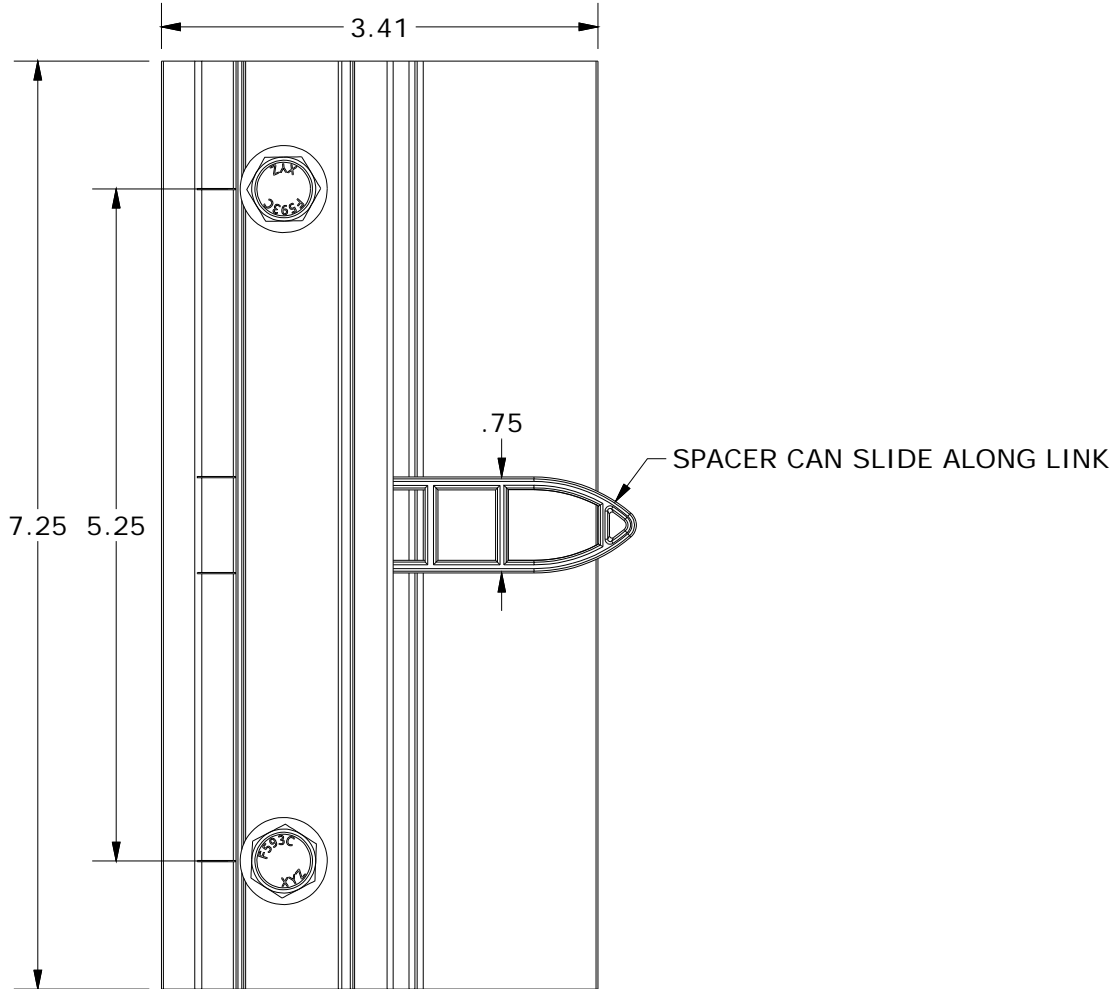
SnapNrack™
Solar Mounting Solutions

PART NUMBER(S):

242-02156

595 MARKET STREET, 29TH FLOOR • SAN FRANCISCO, CA 94105 USA
PHONE (415) 580-6900 • FAX (415) 580-6902

THE INFORMATION IN THIS DRAWING IS CONFIDENTIAL AND PROPRIETARY. ANY REPRODUCTION, DISCLOSURE, OR USE THEREOF IS PROHIBITED WITHOUT THE WRITTEN CONSENT OF SUNRUN SOUTH LLC.



ALL DIMENSIONS IN INCHES

DESCRIPTION:
SNAPNRACK, RL UNIVERSAL, MOUNT

PART NUMBER(S):
242-02155

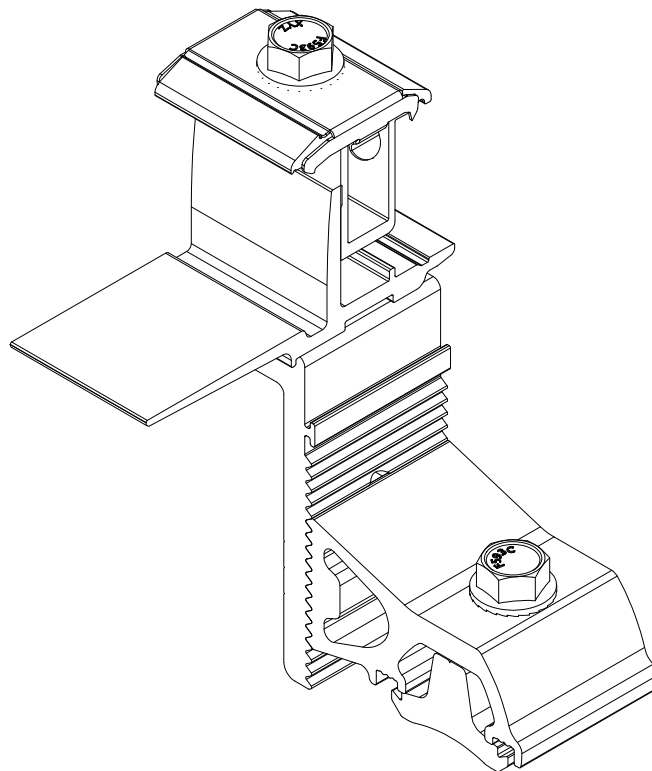
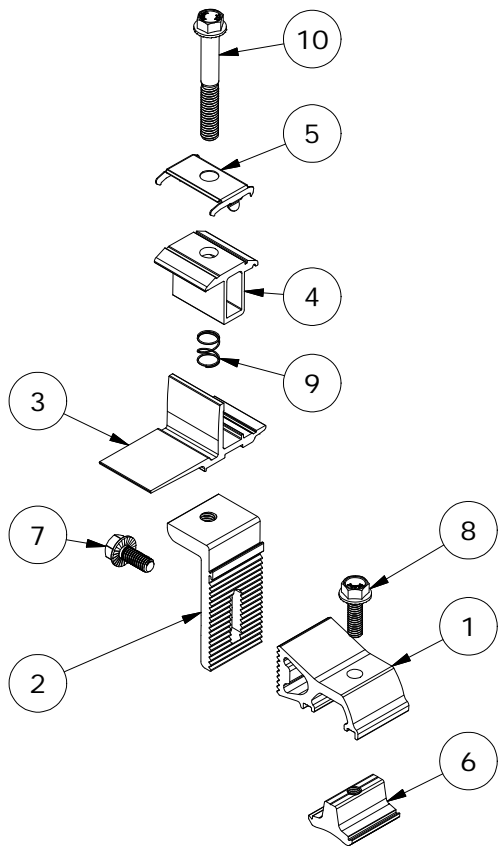
DRAWN BY:
 mwatkins

REVISION:
A

SnapNrack™
 Solar Mounting Solutions

595 MARKET STREET, 29TH FLOOR • SAN FRANCISCO, CA 94105 USA
 PHONE (415) 580-6900 • FAX (415) 580-6902

THE INFORMATION IN THIS DRAWING IS CONFIDENTIAL AND PROPRIETARY. ANY REPRODUCTION, DISCLOSURE, OR USE THEREOF IS PROHIBITED WITHOUT THE WRITTEN CONSENT OF SUNRUN SOUTH LLC.



PARTS LIST		
ITEM	QTY	DESCRIPTION
1	1	SNAPNRACK, RL UNIVERSAL, RISER, MILL
2	1	SNAPNRACK, RL UNIVERSAL, LEVELER, MILL
3	1	SNAPNRACK, RL UNIVERSAL, MOUNT BOTTOM, MILL
4	1	SNAPNRACK, RL UNIVERSAL, MOUNT TOP, BLACK
5	1	SNAPNRACK, RL UNIVERSAL, BONDING CLIP
6	1	SNAPNRACK, DROP IN/ROCK IN CHANNEL NUT
7	1	BOLT, FLANGE, 5/16IN-18 X 3/4IN, CLEAR, SS
8	1	BOLT, FLANGE, SERRATED, 5/16IN-18 X 1IN, SS
9	1	SNAPNRACK, RL UNIVERSAL, MOUNT SPRING, SS
10	1	BOLT, FLANGE, SERRATED, 3/8IN-16 X 2-3/4IN, 1/2IN TRIM HEAD, 1.2IN THREAD, BLACK, SS

MATERIALS:	6000 SERIES ALUMINUM, STAINLESS STEEL	OPTIONS:
DESIGN LOAD (LBS):	623 UP, 674 DOWN, 505 SIDE	
ULTIMATE LOAD (LBS):	N/A	
TORQUE SPECIFICATION:	12 LB-FT	
CERTIFICATION:	UL 2703, FILE E359313	
WEIGHT (LBS):	0.73	

DESCRIPTION:

SNAPNRACK, RL UNIVERSAL, MOUNT

DRAWN BY:

mwatkins

REVISION:

A

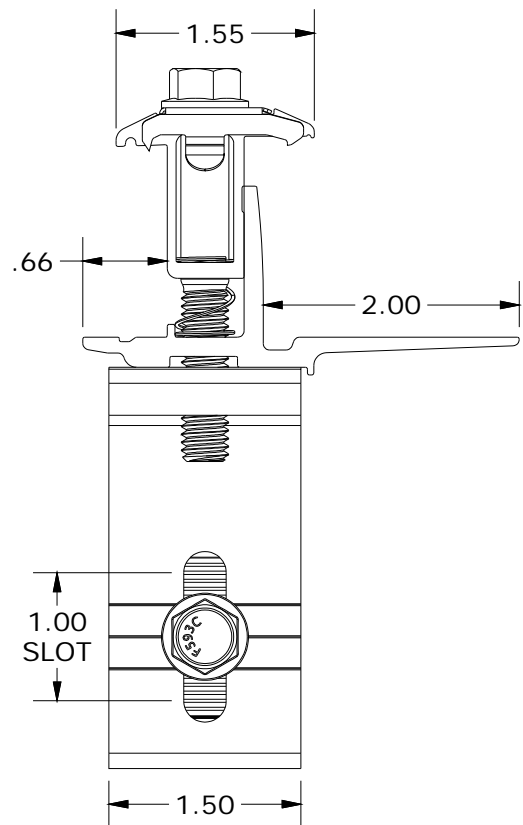
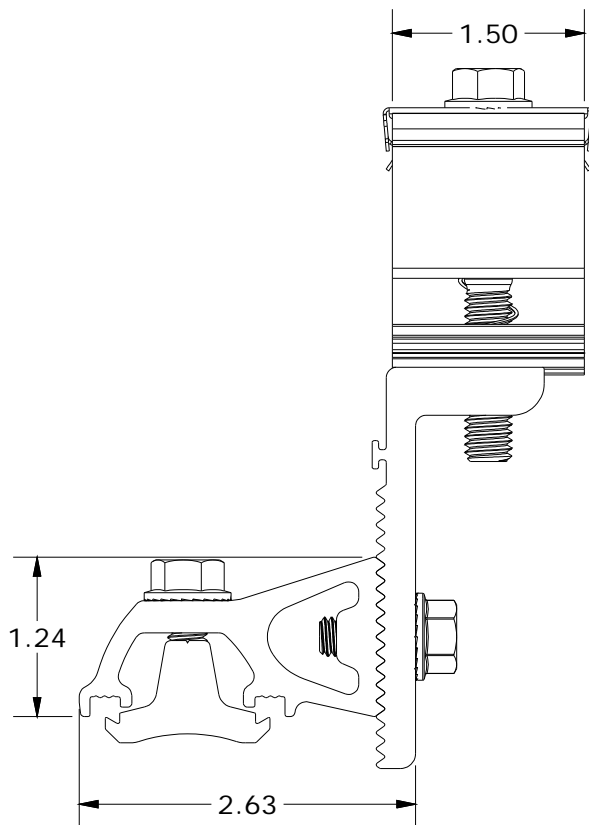
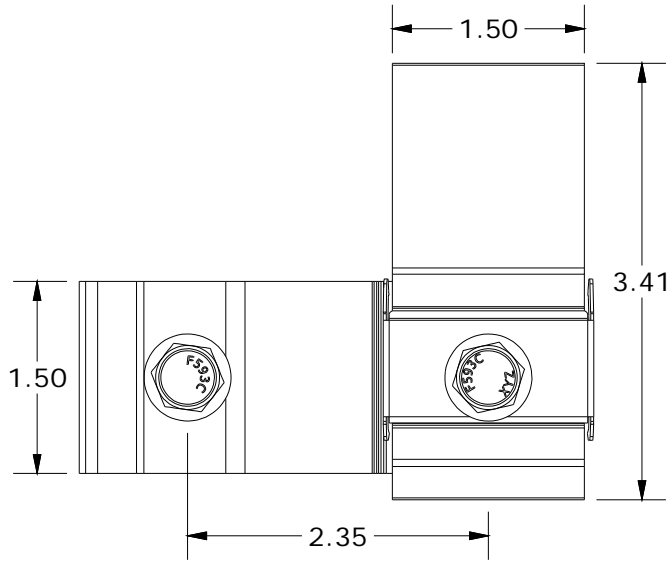
SnapNrack™
Solar Mounting Solutions

PART NUMBER(S):

242-02155

595 MARKET STREET, 29TH FLOOR • SAN FRANCISCO, CA 94105 USA
PHONE (415) 580-6900 • FAX (415) 580-6902

THE INFORMATION IN THIS DRAWING IS CONFIDENTIAL AND PROPRIETARY. ANY REPRODUCTION, DISCLOSURE, OR USE THEREOF IS PROHIBITED WITHOUT THE WRITTEN CONSENT OF SUNRUN SOUTH LLC.



ALL DIMENSIONS IN INCHES

DESCRIPTION:
SNAPNRACK, RL UNIVERSAL, RIDGE MOUNT

PART NUMBER(S):
242-02157

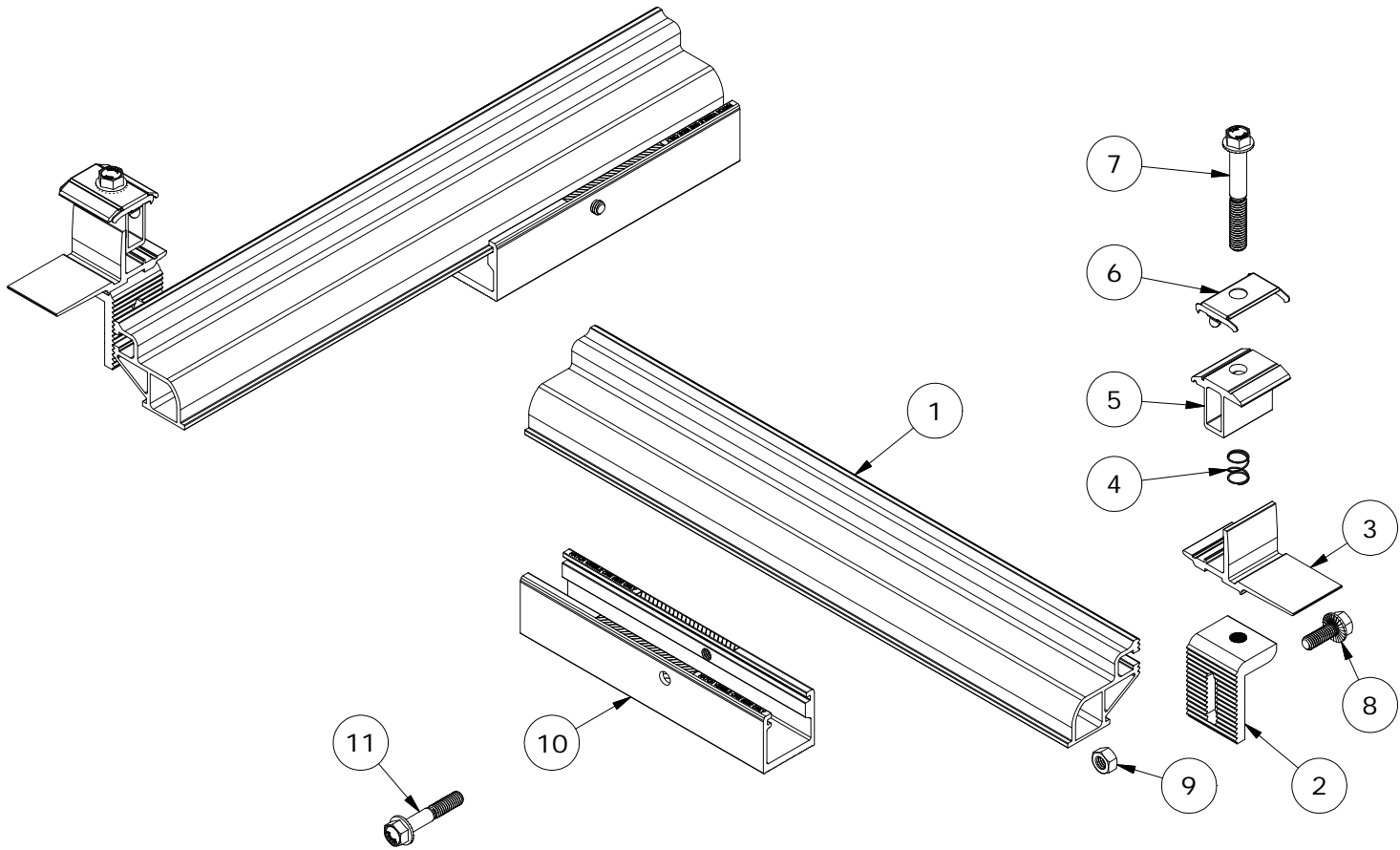
DRAWN BY:
 mwatkins

REVISION:
A

SnapNrack™
 Solar Mounting Solutions

595 MARKET STREET, 29TH FLOOR • SAN FRANCISCO, CA 94105 USA
 PHONE (415) 580-6900 • FAX (415) 580-6902

THE INFORMATION IN THIS DRAWING IS CONFIDENTIAL AND PROPRIETARY. ANY REPRODUCTION, DISCLOSURE, OR USE THEREOF IS PROHIBITED WITHOUT THE WRITTEN CONSENT OF SUNRUN SOUTH LLC.



PARTS LIST

ITEM	QTY	DESCRIPTION
1	1	SNAPNRACK, RL UNIVERSAL, RIDGE MOUNT EXTENSION, 16-3/4IN, MILL
2	1	SNAPNRACK, RL UNIVERSAL, RIDGE MOUNT LEVELER, MILL
3	1	SNAPNRACK, RL UNIVERSAL, MOUNT BOTTOM, MILL
4	1	SNAPNRACK, RL UNIVERSAL, MOUNT SPRING, SS
5	1	SNAPNRACK, RL UNIVERSAL, MOUNT TOP, BLACK
6	1	SNAPNRACK, RL UNIVERSAL, BONDING CLIP
7	1	BOLT, FLANGE, SERRATED, 3/8IN-16 X 2-3/4IN, 1/2IN TRIM HEAD, 1.2IN THREAD, BLACK, SS
8	1	BOLT, FLANGE, SERRATED, 5/16IN-18 X 7/8IN, SS
9	1	NUT, FULL HEX, 5/16IN-18, FLAT, SS
10	1	SNAPNRACK, RL UNIVERSAL, RIDGE MOUNT TRACK, 7-1/2IN, MILL
11	1	BOLT, FLANGE, SERRATED, 5/16IN-18 X 1-3/4IN, SS

MATERIALS:	6000 SERIES ALUMINUM, STAINLESS STEEL	OPTIONS:
DESIGN LOAD (LBS):	311 UP, 337 DOWN, 252 SIDE	
ULTIMATE LOAD (LBS):	N/A	
TORQUE SPECIFICATION:	12 LB-FT	
CERTIFICATION:	UL 2703, FILE E359313	
WEIGHT (LBS):	2.36	

DESCRIPTION:
SNAPNRACK, RL UNIVERSAL, RIDGE MOUNT

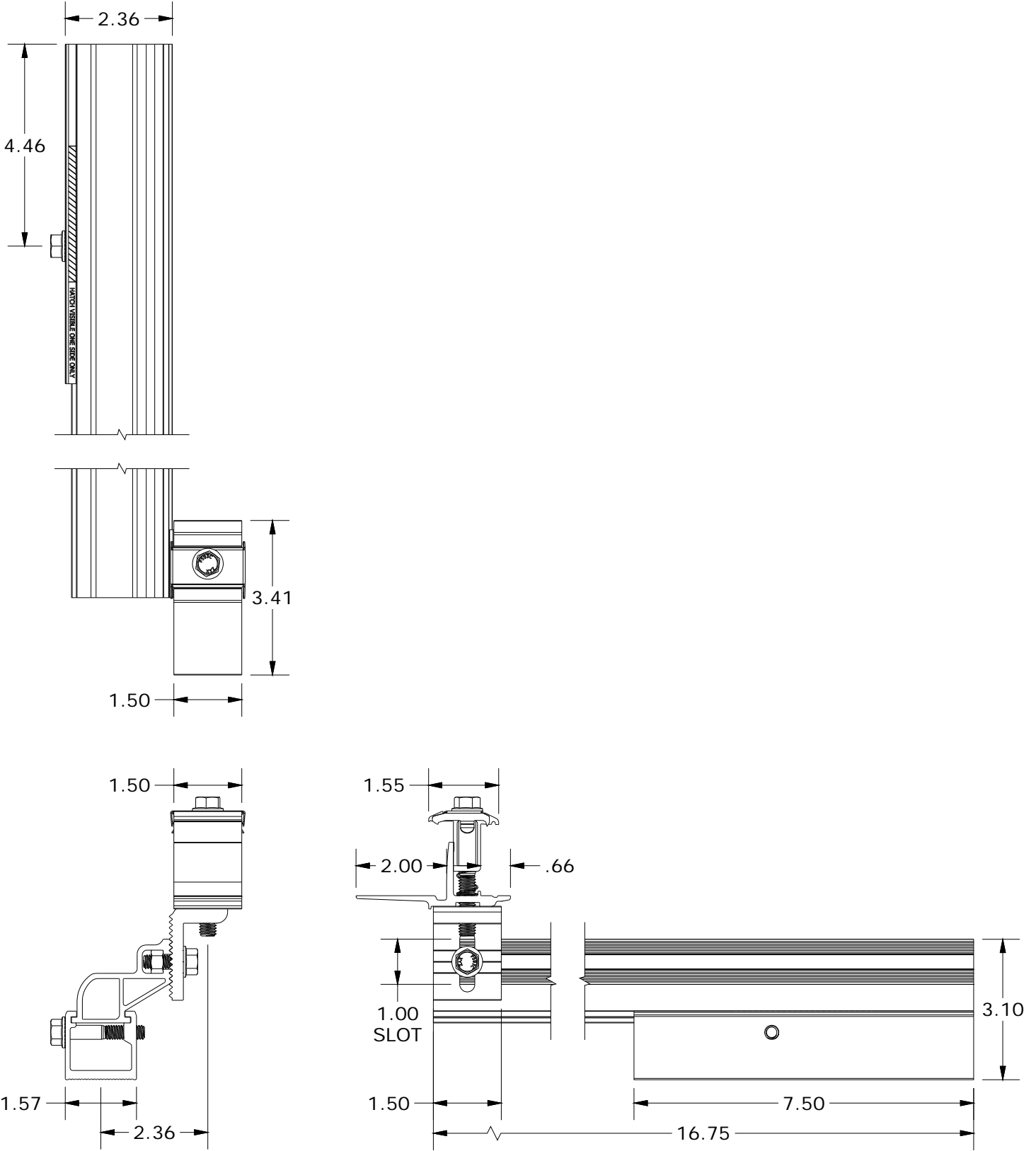
DRAWN BY:
 mwatkins



PART NUMBER(S):
242-02157

REVISION:
A

595 MARKET STREET, 29TH FLOOR • SAN FRANCISCO, CA 94105 USA
 PHONE (415) 580-6900 • FAX (415) 580-6902
 THE INFORMATION IN THIS DRAWING IS CONFIDENTIAL AND PROPRIETARY. ANY REPRODUCTION, DISCLOSURE, OR USE THEREOF IS PROHIBITED WITHOUT THE WRITTEN CONSENT OF SUNRUN SOUTH LLC.



ALL DIMENSIONS IN INCHES

DESCRIPTION:
SNAPRACK, RL UNIVERSAL, SKIRT SPACERS

PART NUMBER(S):
232-02494, 232-02495, 232-02496, 232-02497

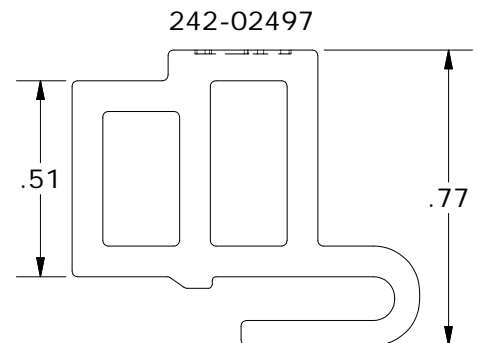
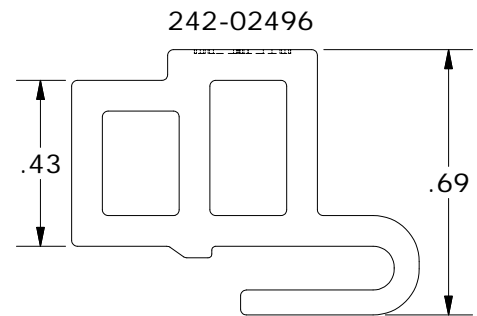
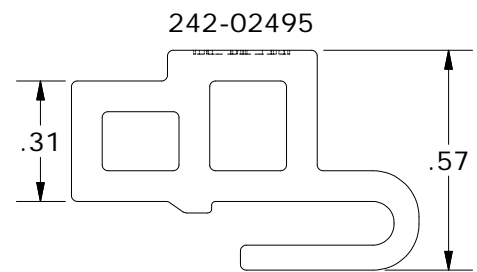
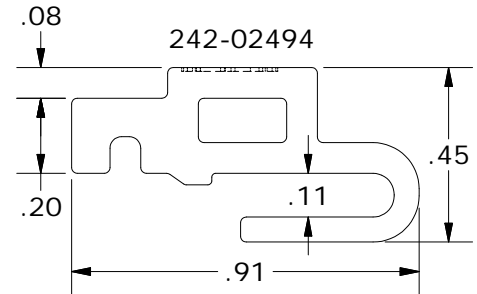
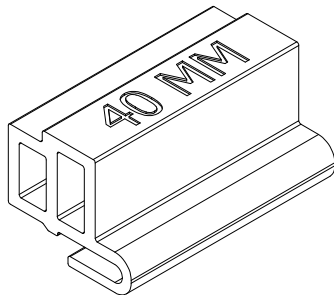
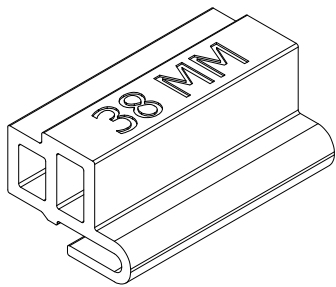
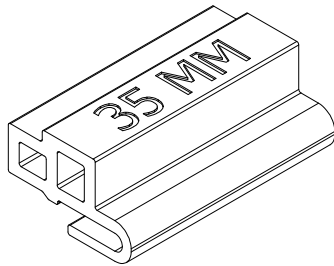
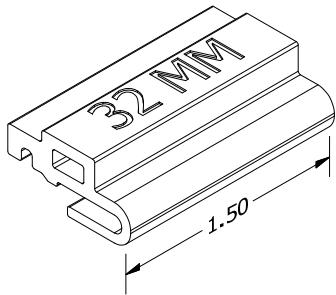
DRAWN BY:
 mwatkins

REVISION:
A

SnapNrack™
 Solar Mounting Solutions

595 MARKET STREET, 29TH FLOOR • SAN FRANCISCO, CA 94105 USA
 PHONE (415) 580-6900 • FAX (415) 580-6902

THE INFORMATION IN THIS DRAWING IS CONFIDENTIAL AND PROPRIETARY. ANY REPRODUCTION, DISCLOSURE, OR USE THEREOF IS PROHIBITED WITHOUT THE WRITTEN CONSENT OF SUNRUN SOUTH LLC.



RL UNIVERSAL SKIRT SPACER PROPERTIES		
SKU	MODULE FRAME SIZE	COLOR
232-02494	32 MM	GOLD
232-02495	35 MM	BLUE
232-02496	38 MM	BLACK
232-02497	40 MM	SILVER/CLEAR

ALL DIMENSIONS IN INCHES

MATERIALS:	6000 SERIES ALUMINUM	OPTIONS:
DESIGN LOAD (LBS):	N/A	32 MM FRAMES
ULTIMATE LOAD (LBS):	N/A	35 MM FRAMES
TORQUE SPECIFICATION:	N/A LB-FT	38 MM FRAMES
CERTIFICATION:	UL 2703, FILE E359313	40 MM FRAMES
WEIGHT (LBS):	0.03 - 0.04	

DESCRIPTION:
SNAPNRACK, RL UNIVERSAL, SPEEDSEAL™ MOUNT KIT

DRAWN BY:

mwatkins

REVISION:

A

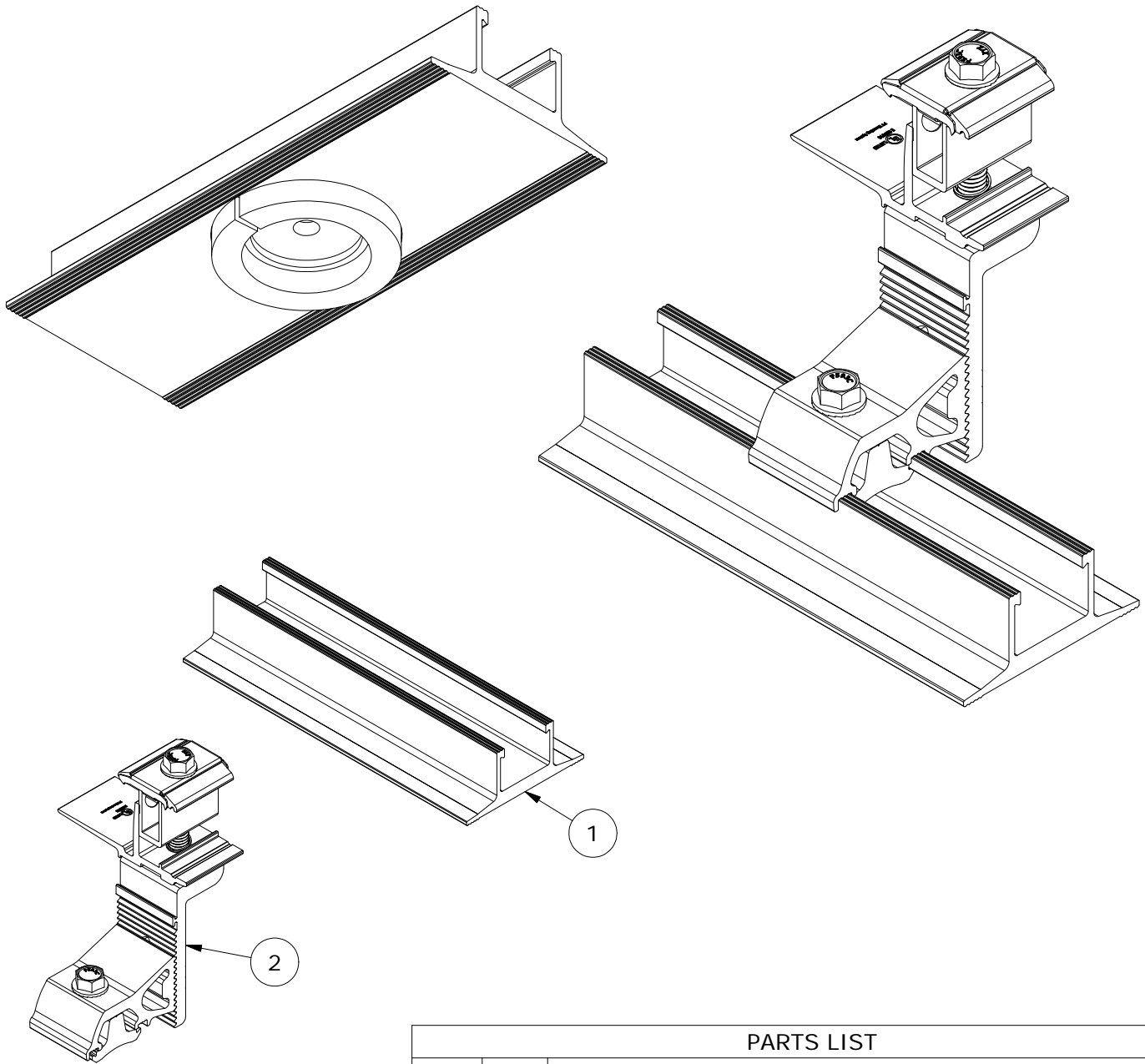
SnapNrack™
Solar Mounting Solutions

PART NUMBER(S):

242-92642

595 MARKET STREET, 29TH FLOOR • SAN FRANCISCO, CA 94105 USA
 PHONE (415) 580-6900 • FAX (415) 580-6902

THE INFORMATION IN THIS DRAWING IS CONFIDENTIAL AND PROPRIETARY. ANY REPRODUCTION, DISCLOSURE, OR USE THEREOF IS PROHIBITED WITHOUT THE WRITTEN CONSENT OF SUNRUN SOUTH LLC.



PARTS LIST

ITEM	QTY	DESCRIPTION
1	1	SNAPNRACK, SPEEDSEAL TRACK, 7-1/2IN, SEALING, MILL
2	1	SNAPNRACK, RL UNIVERSAL, MOUNT

MATERIALS:	6000 SERIES ALUMINUM, STAINLESS STEEL, FOAM
DESIGN LOAD (LBS):	623 UP, 674 DOWN, 505 SIDE
ULTIMATE LOAD (LBS):	N/A
TORQUE SPECIFICATION:	12 LB-FT
CERTIFICATION:	UL 2703, FILE E359313; WIND-DRIVEN RAIN TEST FROM UL SUBJECT 2582
WEIGHT (LBS):	1.39

DESCRIPTION:
SNAPNRACK, RL UNIVERSAL, SPEEDSEAL™ MOUNT
KIT

DRAWN BY:

mwatkins

REVISION:

A

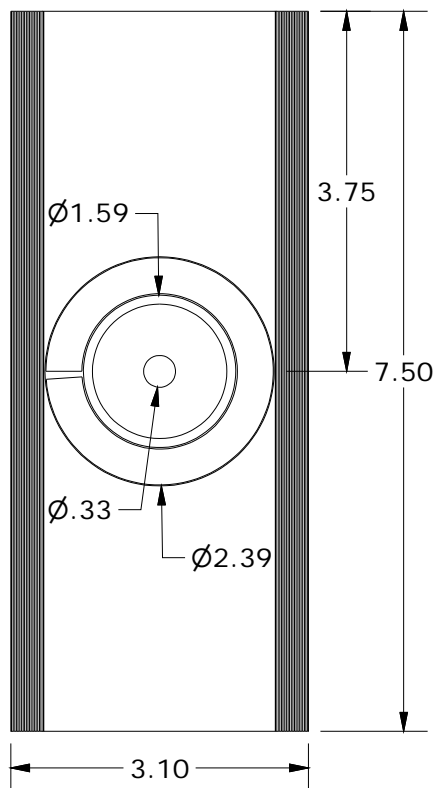
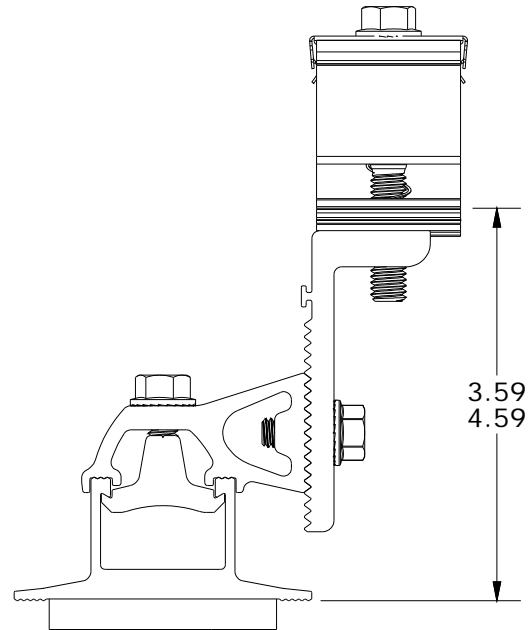
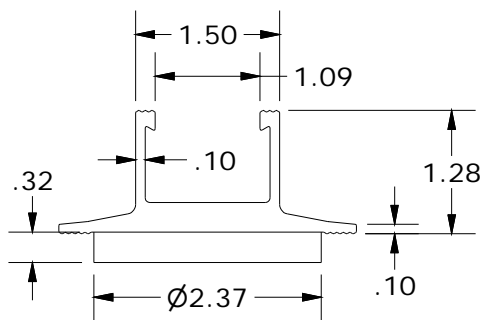
SnapNrack™
Solar Mounting Solutions

PART NUMBER(S):

242-92642

595 MARKET STREET, 29TH FLOOR • SAN FRANCISCO, CA 94105 USA
PHONE (415) 580-6900 • FAX (415) 580-6902

THE INFORMATION IN THIS DRAWING IS CONFIDENTIAL AND PROPRIETARY. ANY
REPRODUCTION, DISCLOSURE, OR USE THEREOF IS PROHIBITED WITHOUT THE
WRITTEN CONSENT OF SUNRUN SOUTH LLC.



ALL DIMENSIONS IN INCHES

DESCRIPTION:

SNAPNRACK, WIRE SAVER

DRAWN BY:

mwatkins

REVISION:

A

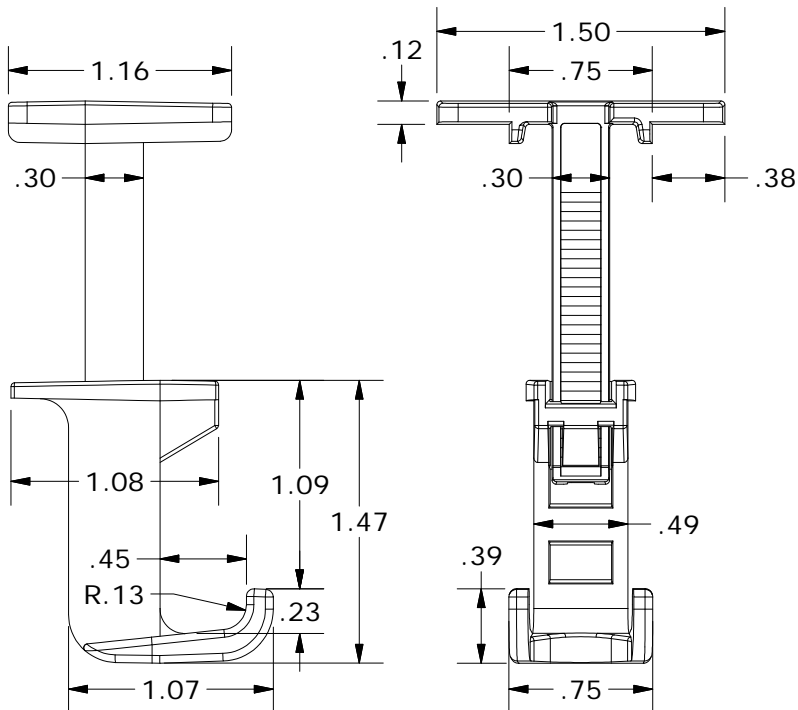
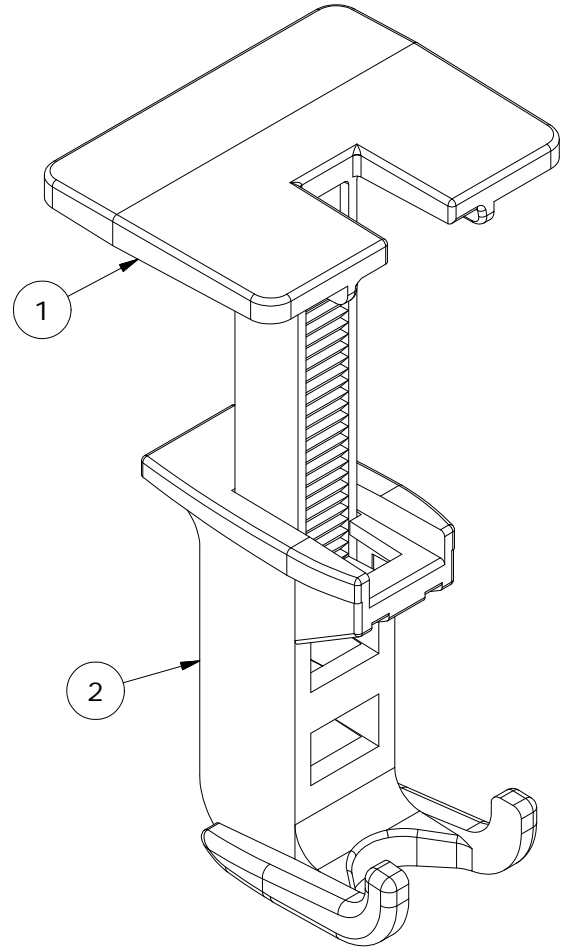
SnapNrack™
Solar Mounting Solutions

PART NUMBER(S):

242-92262

595 MARKET STREET, 29TH FLOOR • SAN FRANCISCO, CA 94105 USA
PHONE (415) 580-6900 • FAX (415) 580-6902

THE INFORMATION IN THIS DRAWING IS CONFIDENTIAL AND PROPRIETARY. ANY REPRODUCTION, DISCLOSURE, OR USE THEREOF IS PROHIBITED WITHOUT THE WRITTEN CONSENT OF SUNRUN SOUTH LLC.



PARTS LIST		
ITEM	QTY	DESCRIPTION
1	1	SNAPNRACK, WIRE SAVER TOP
2	1	SNAPNRACK, WIRE SAVER BOTTOM

MATERIALS:

POLYCARBONATE

OPTIONS:

DESIGN LOAD (LBS):

N/A

ULTIMATE LOAD (LBS):

N/A

TORQUE SPECIFICATION:

N/A LB-FT

CERTIFICATION:

N/A

WEIGHT (LBS):

0.022